



Part No. 14-7169

**DEALER
INSTRUCTIONS**
SNOWTHROWER RETAINER CLIP

For Model 0642SS01

MODIFY DRIVE BELT IDLER ASSEMBLY AND INSTALL RETAINER CLIP

The retainer clip is used to mount the lift rod in the notch in the cross shaft arm, which reduces the effort required to lift the snowthrower. However, the snowthrower idler pulley assembly must be modified for proper operation.

For reference photographs, refer to the 42" Snowthrower Operator's Manual, form number 3314-779. Because the other side of this sheet has customer information, be sure to include this ADDENDUM with the Operator's Manual.

If snowthrower is already installed:

1. Lower the snowthrower to the ground and remove the belt from the idler pulley assembly.
2. Raise the snowthrower to the transport position. Then block up the snowthrower so it stays in the raised position. This releases the tension on the lift assist spring.
3. Unhook lift assist spring from rod (see Operator's Manual).
4. Remove idler pulley assembly from tractor by removing the hair pin cotter and clevis pin (see Operator's Manual).
5. Using a hack saw, cut material off end of idler pulley assembly (Fig. 1 below). This allows clearance for lift rod.

6. Remove hair pin cotter from end of lift rod. Then remove lift rod from hole in cross shaft arm (see Operator's Manual).

7. Slide lift rod, spacer and washers out of lift tube (see Operator's Manual). Remove the spacer and washer(s) from the lift rod.

8. Install idler pulley assembly with clevis pin and hair pin cotter (see Operator's Manual).

9. Mount snowthrower using operator's manual and addendum information on the opposite side of this page.

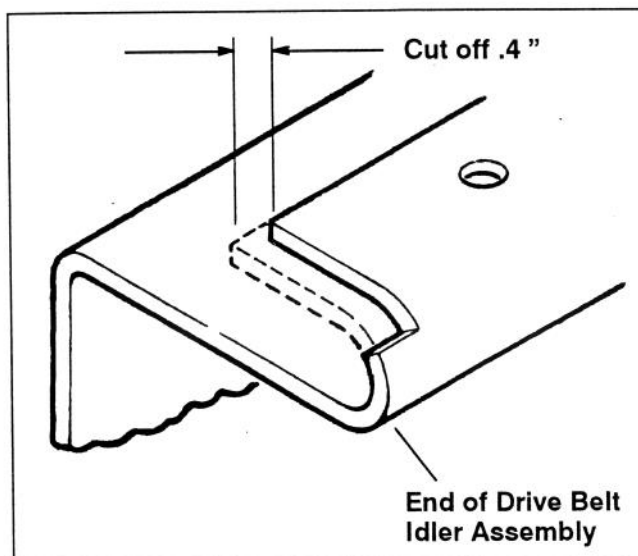


Figure 1

If snowthrower is not yet installed:

1. Using a hack saw, cut material off end of idler pulley assembly (Fig. 1). This allows clearance for lift rod.
2. Mount snowthrower using operator's manual and addendum information on the opposite side of this page.



Part No. 14-7169

**OPERATOR'S
MANUAL
ADDENDUM****SNOWTHROWER RETAINER CLIP**
For Model 0642SS01

The following instructions replace those found on page 2 in your 42" Snowthrower Operator's Manual, form number 3314-779.

Instead of installing lift rod pin in hole in cross shaft arm (as described in the second and third paragraphs below Fig. 7), position lift rod pin in cross shaft arm notch (Fig. 1 below). Secure lift rod in place with retainer clip and hair pin cotter. (Fig. 1 below).

The purpose of this revised mounting location is to reduce the effort required to raise the snowthrower.

Note: To allow snowthrower to travel throughout a wide range of ground contours, do not install any washers on the lift tube. If more transport height is ever desired, a washer or two could be installed on the lift tube, but this reduces the snowthrower's downward range of travel.

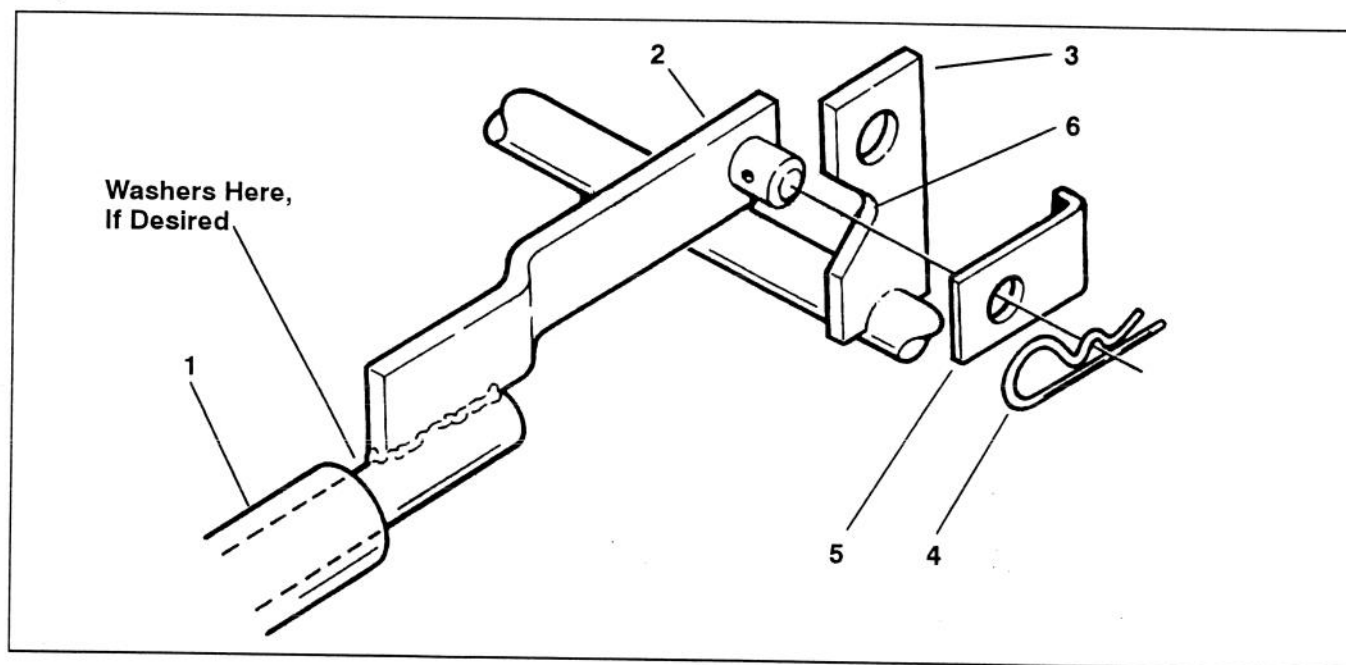


Figure 1

- 1. Lift Tube
- 2. Lift Rod
- 3. Cross Shaft Arm

- 4. Hair Pin Cotter
- 5. Retainer Clip
- 6. Notch Area