

TORO

PART NO. 65-4300

**INSTALLATION
INSTRUCTIONS****SPARK ARRESTER KIT**

For TC 3100 and TC 3500 Gas Trimmers

INSTALLING SPARK ARRESTER MUFFLER**CAUTION**

Do not touch muffler if engine has just been run because it will be hot enough to cause a burn.

In some areas there are local, state or federal regulations requiring that a spark arrester muffler be used on the engine of this trimmer. This muffler was qualified by the United States Department of Agriculture Forest Service as meeting minimum required performance levels for spark arrester mufflers.

When trimmer is used or operated on any California forest, brush or grass covered land, a working order spark arrester muffler must be used on the engine. If not, the operator is violating state law, Section 4442 Public Resources Code.

1. Remove (1) screw and loosen (1) screw securing muffler cover to trimmer.

2. Remove washer and nut securing muffler lid, gasket and baffle to muffler body (Fig.1).

3. Remove (2) nuts and mounting plate securing muffler body to trimmer (Fig.1). Remove muffler body, muffler body bolt and gaskets.

4. Install new muffler gasket on mounting studs (Fig.2).

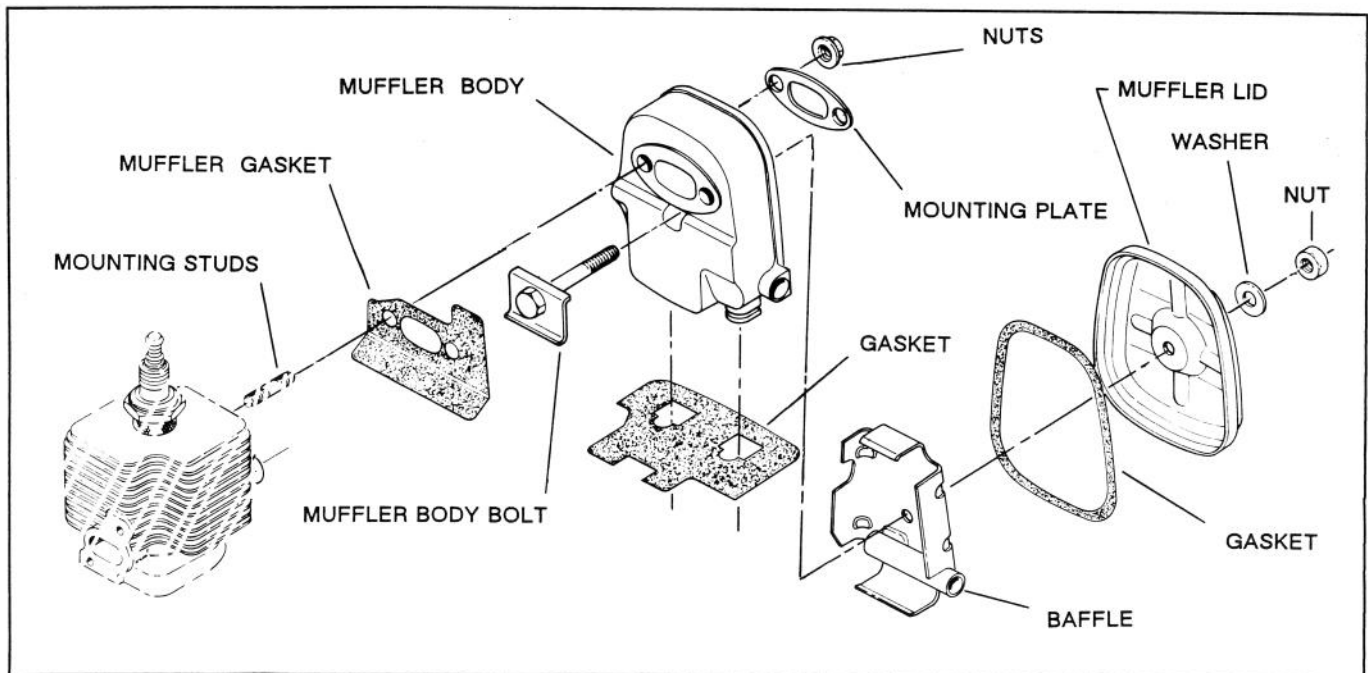


Figure 1

5. Install new gasket to bottom on new muffler body (Fig.2).

6. Insert new muffler body bolt thru muffler body as shown in fig.2 and secure muffler body to trimmer with mounting plate and (2) nuts previously removed.

7. Insert spark arrester screen and baffle into muffler body as shown in fig.2. Make sure screen is properly aligned with baffle.

8. Install new gasket and muffler lid to muffler body with washer and nut (Fig.2).

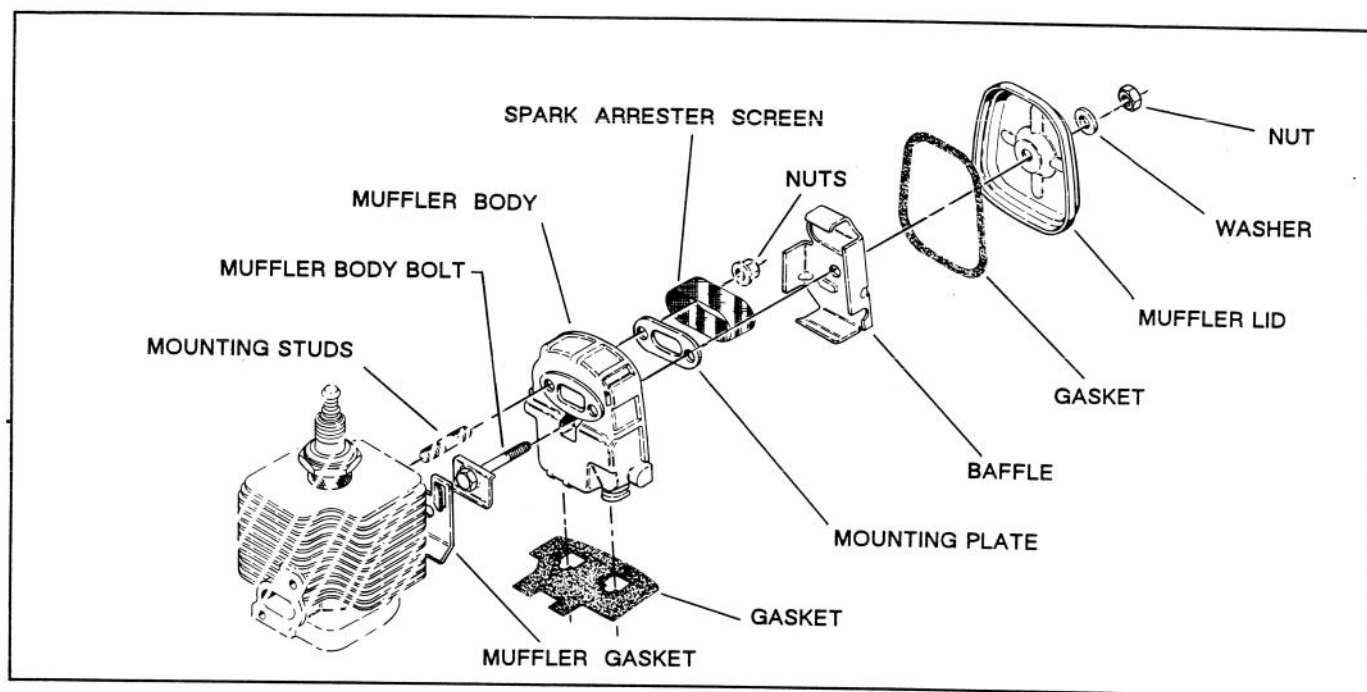


Figure 2

9. Install muffler cover to trimmer with screws previously loosened and removed.

SERVICE INSTRUCTIONS

If spark arrester becomes plugged:

1. Disassemble muffler as previously described to remove spark arrester screen.

2. Clean screen of carbon with wire brush or compressed air. If screen is damaged or deteriorated, spark arrester must be replaced: refer to your local TORO dealer for replacement parts.

3. Make sure gaskets are usable (replace, if necessary) (Fig.2).