



Proline 120
44" Side Discharge
Cutting Unit

Model No. 30546 – 690001 & Up

Parts Catalog

ORDERING REPLACEMENT PARTS

To order replacement parts, please supply: the part number, the quantity, and the description of each part desired.

Contents

Description	Page	Description	Page
Deck, Deflector's, Pulleys & Spindle's	1	Carrier Frame	4
Deck, Deflector's, Pulleys & Spindle's	2	Decals	5
Gearbox Drive And Cover's	3	Gearbox Assembly No. 54–2320	6

Note:

Accessories

Description	Model / Parts No.	Description	Model / Parts No.
..			

Part Description Abbreviations

Part descriptions in this catalog may include the following abbreviations.

Abbreviation	Meaning	Abbreviation	Meaning
AR	as required	HWHTF	hex washer head thread forming
ASM	assembly	INCL	includes
CARR	carriage	LH	left hand
DEG	degrees	PH	pan head
FH	flat head	PPH	Phillips pan head
GA	gauge	PTO	power take off
HF	hex flange	RH	right hand
HFW	hex flange washer	SFH	slotted fillister head
HH	hex head	SH	square head
HHF	hex head flange	SHWH	slotted hex washer head
HHST	hex head self tapping	SPH	slotted pan head
HJ	hex jam	STD	standard
HOC	height-of-cut	TAP	self tapping
HS	hex socket	TH	truss head
HSBH	hex socket button head	TTH	Torx truss head
HSFH	hex socket flat head	WH	wing head
HSH	hex socket head		
HWH	hex washer head		

Important Format Explanations

This catalog uses special formats to convey information in illustrations and parts lists. Specifically, one format is used in conjunction with service assemblies and another with quantities associated with reference numbers.

Service Assemblies

Parts within service assemblies have reference numbers in the form $X:Y$. X is the reference number of the service assembly and Y is a sequential number unique to each part within the service assembly.

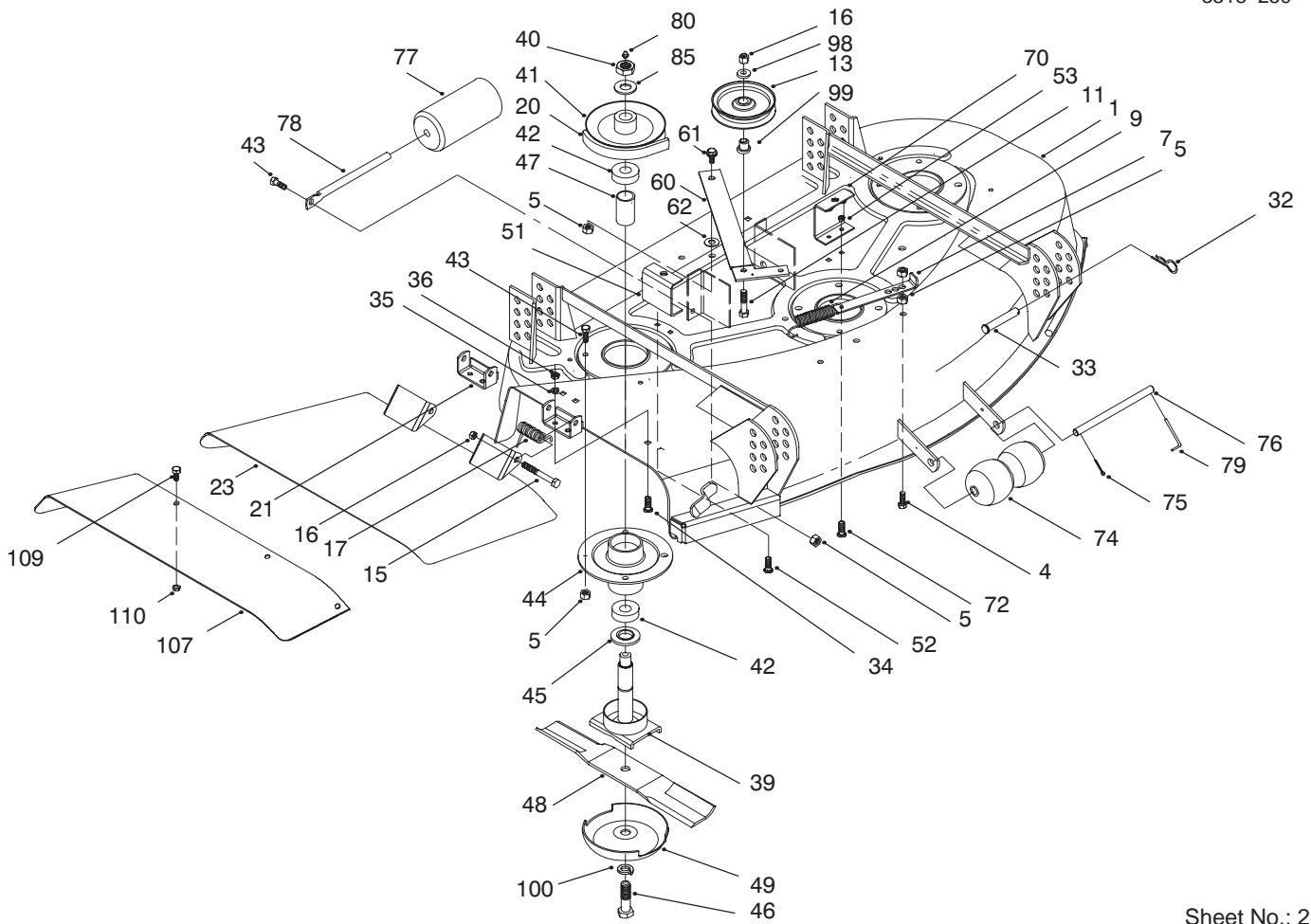
For example, a wheel assembly might be identified by reference number 6, the tire by 6:1, the valve by 6:2, and the wheel by 6:3. When you order the assembly identified by reference number 6, you receive all parts identified by reference numbers 6:1, 6:2, and 6:3. However, you may also order any part individually.

Reference numbers of this type appear in part lists and as callouts in illustrations.

Reference Numbers with Quantities

Illustrations may have a quantity in parentheses next to a reference number, in the form $X (Y)$. X is the reference number. Y in parentheses is the quantity of the part identified by the reference number.

For example, the illustration callout 4 (2) indicates that two parts are used in that instance.

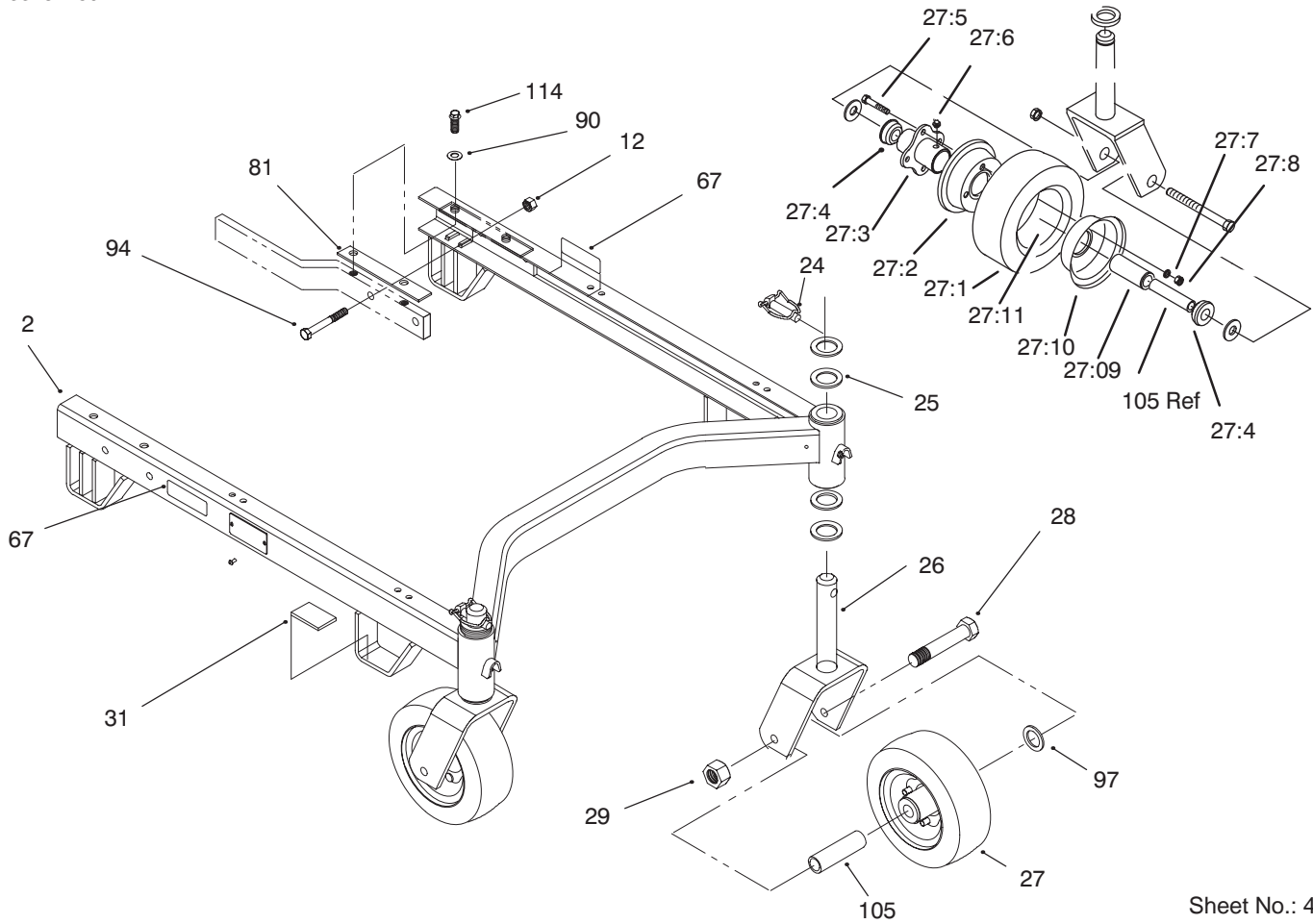


Sheet No.: 2

Deck, Deflector's, Pulleys & Spindle's

Ref. No.	Part No.	Qty.	Description
1	94-5833	1	44" Deck
4	322-5	1	Screw-HH
5	32152-1	16	Nut-Lock
7	54-1180	1	Anchor-Deck Spring
9	54-1160	1	Spring-Extension
11	3211-8	1	Screw HH
13	65-5940	1	Pulley-Idler
15	3211-15	2	Screw-Cap
16	3296-5	3	Nut-Lock
17	40-6230	2	Spring-Torsion
20	54-1370	1	V-Belt
21	29-5590-03	2	Bracket-Pivot
23	57-6970-03	1	Grass Deflector
32	3290-355	4	Pin-Hair
33	283-55	4	Pin-Clevis
34	3230-20	4	Bolt-CARR
35	3253-4	4	Washer-Lock
36	3217-6	4	Nut-Hex
39	71-2780	3	Shaft
40	32146-20	3	Nut-Lock
41	67-7690	3	Pulley
42	251-257	6	Bearing
43	322-4	13	Screw-HH
44	67-7590	3	Housing-Spindle
45	67-7570	3	Spacer-Spindle
46	51-4060	3	Bolt-Blade

Ref. No.	Part No.	Qty.	Description
47	67-7580	3	Spacer-Bearing
48	54-0010	3	Blade-15.5
49	67-7560	3	Cup-Anti-Scalp
51	55-7050	1	Cover-Bracket RH
52	3229-11	2	Bolt-CARR
53	3296-16	4	Nut-Lock
60	55-7430	1	Lever-Deck
61	19-1470	1	Bolt-Shoulder
62	23-1120	1	Washer-Flat
70	55-7060	1	Cover-Bracket LH
72	3229-3	2	Bolt-Carriage
74	29-4820	2	Roller
75	3272-11	1	Pin-Cotter
76	40-6400	1	Shaft-Roller
77	36-1740	1	Roller-Deck
78	62-4480	1	Rod-Roller
79	57-0690	1	Pin-Cotter
80	302-2	3	Fitting-Grease
85	7-4150	3	Washer
98	7-0081	1	Washer-Special
99	65-5950	1	Bushing-Pulley



Sheet No.: 4

Carrier Frame

Ref. No.	Part No.	Qty.	Description
2	94-5830	1	44" Suspension ASM
12	32152-2	4	Nut-Lock
24	3290-384	2	Pin-Lynch
25	3-6781	8	Washer-Thrust
26	68-8900	2	Front Castor Fork
27	13-3869	2	ASM-Pneumatic Tire Incl. 27:1 - 27:11
27:1	68-8960	1	Tire
27:2	68-8920	1	Wheel Half - Female
27:3	68-8940	1	Hub - Centered
27:4	62-5580	2	Bushing
27:5	54-8890	4	Bolt - Wheel
27:6	302-61	1	Fitting - Grease
27:7	3253-4	2	Washer Lock
27:8	3219-2	2	Nut
27:09	62-5570	1	Bearing
27:10	68-8930	1	Wheel Half - Male
27:11	68-8950	1	Tube w/Valve
28	325-19	2	Screw-HH
29	32153-5	2	Nut-Lock
31	74-0340	2	Cushion-Rubber
67	93-7819	2	Decal-HOC
81	62-6980	2	Shim-Carrier
90	3256-24	4	Washer-Flat
94	323-9	4	Screw-HH
97	3256-6	4	Washer-Flat

Ref. No.	Part No.	Qty.	Description
105	68-8980	2	Bushing-Spanner
114	3234-25	4	Bolt-Flange

Toro Part Number Index

Part No.	Page No.	Ref. No.	Qty.	Description
114621	5	3	1	Decal—Noise
3-6781	4	25	8	Washer—Thrust
7-0081	1	98	1	Washer—Special
7-4150	1	85	3	Washer
19-1470	1	61	1	Bolt—Shoulder
23-1120	1	62	1	Washer—Flat
29-4820	1	74	2	Roller
29-5590-03	1	21	2	Bracket—Pivot
36-1740	1	77	1	Roller—Deck
40-6230	1	17	2	Spring—Torsion
40-6400	1	76	1	Shaft—Roller
42-6482	4	37	1	Plate—Serial
46-8560	3	19	5	Screw—Hhf
51-4060	1	46	3	Bolt—Blade
54-0010	1	48	3	Blade—15.5
54-1160	1	9	1	Spring—Extension
54-1180	1	7	1	Anchor—Deck Spring
54-1360	3	93	1	V—Belt
54-1370	1	20	1	V—Belt
54-2220	3	68	1	Cover—Deck
54-2240	3	50	1	Cover—Deck
54-2250	3	22	1	Cover—Deck
54-2320	3	58	1	Gearbox—Deck Drive
54-2350	3	63	1	Pulley—Gearbox
54-2360	3	64	1	Pulley—Gearbox
54-2760	5	8	1	Decal—44"
55-7030	3	56	1	Bracket—Gearbox
55-7040	3	66	1	Cover—Deck
55-7050	1	51	1	Cover—Bracket RH
55-7060	1	70	1	Cover—Bracket LH
55-7430	1	60	1	Lever—Deck
57-0690	1	79	1	Pin—Cotter
57-6970-03	1	23	1	Grass Deflector
62-4480	1	78	1	Rod—Roller
62-6980	4	81	2	Shim—Carrier
65-5940	1	13	1	Pulley—Idler
65-5950	1	99	1	Bushing—Pulley
67-7560	1	49	3	Cup—Anti—Scalp
67-7570	1	45	3	Spacer—Spindle
67-7580	1	47	3	Spacer—Bearing
67-7590	1	44	3	Housing—Spindle
67-7690	1	41	3	Pulley
68-8900	4	26	2	Front Castor Fork
68-8970	4	27	2	ASM—Pneumatic Tire
68-8980	4	105	2	Bushing—Spanner
70-7045	5	86	1	Card—Registration
71-2780	1	39	3	Shaft
74-0340	4	31	2	Cushion—Rubber
93-7273	5	102	1	Decal—Danger
93-7316	5	30	2	Decal—Danger
93-7819	4	67	2	Decal—HOC
93-7824	5	101	1	Decal—Danger
93-7828	5	18	1	Decal—Danger
93-9484	2	107	1	Guard—Deflector
93-9485	3	108	1	Baffle—Front
93-9488	5	113	1	Cert. Of Incorporation
94-1293	3	112	4	Fastener
94-5830	4	2	1	44" Suspension ASM
94-5833	1	1	1	44" Deck GM120
249-35	3	6	4	Ring—Retaining
251-257	1	42	6	Bearing
283-55	1	33	4	Pin—Clevis

*Not Illustrated

Toro Part Number Index (cont.)

Part No.	Page No.	Ref. No.	Qty.	Description
302-2	1	80	3	Fitting—Grease
302-14	3	57	1	Fitting—Pressure Relief
322-3	2	109	4	Screw—HH
322-3	3	109	5	Screw—HH
322-4	1	43	13	Screw—HH
322-4	3	43	4	Screw—HH
322-5	1	4	1	Screw—HH
323-6	3	59	2	Screw—HH
323-9	4	94	4	Screw—HH
325-19	4	28	2	Screw—HH
3211-8	1	11	1	Screw HH
3211-15	1	15	2	Screw—Cap
3217-6	1	36	4	Nut—Hex
3229-3	1	72	2	Bolt—Carriage
3229-11	1	52	2	Bolt—CARR
3230-20	1	34	4	Bolt—CARR
3234-25	4	114	4	Bolt—Flange
3245-9	3	73	4	Screw—RH
3253-4	1	35	4	Washer—Lock
3253-8	2	100	3	Washer—Lk
3256-6	4	97	4	Washer—Flat
3256-23	3	55	2	Washer—Flat
3256-24	4	90	4	Washer—Flat
3257-30	3	65	2	Key—Woodruff
3272-11	1	75	1	Pin—Cotter
3290-271	4	38	2	Rivet—Pop
3290-355	1	32	4	Pin—Hair
3290-384	4	24	2	Pin—Lynch
3296-5	1	16	3	Nut—Lock
3296-16	1	53	4	Nut—Lock
3296-47	2	110	4	Nut—Lock
3296-47	3	110	5	Nut—Lock
32146-20	1	40	3	Nut—Lock
32152-1	1	5	16	Nut—Lock
32152-1	3	5	4	Nut—Lock
32152-2	3	12	2	Nut—Lock
32152-2	4	12	4	Nut—Lock
32153-5	4	29	2	Nut—Lock