



Z-Master
Z222 Zero Radius
Tractor

Model No. 74160 – 790001 & Up

Parts Catalog

ORDERING REPLACEMENT PARTS

To order replacement parts, please supply: the part number, the quantity, and the description of each part desired.

Contents

Description	Page	Description	Page
Frame and Wheels	1	Crankcase	14
Seat and Fenders	2	Oil Pan / Lubrication	15
Seat and Fenders	3	Head / Valve / Breather	16
Deck Height Control	4	Ignition / Electrical	17
Engine and Fuel Systems	5	Blower Housing & Baffles	18
Engine and Fuel Systems	6	Starting System	19
Electrical Systems	7	Fuel System	20
Hydraulic Systems	8	Engine Control	21
Hydraulic Systems	9	Air Intake / Filtration	22
Parking Brake	10	Exhaust	23
Wheel / Brake Asm	11	Hydraulic Schematic	24
Steering Systems	12	Electrical Schematic	25
Crankshaft	13		

Part Description Abbreviations

Part descriptions in this catalog may include the following abbreviations.

Abbreviation	Meaning	Abbreviation	Meaning
AR	as required	HWHTF	hex washer head thread forming
ASM	assembly	INCL	includes
CARR	carriage	INC	incorporated
DEG	degrees	LH	left hand
FH	flat head	PH	pan head
GA	gauge	PPH	Phillips pan head
HF	hex flange	PTO	power take off
HFV	hex flange washer	RH	right hand
HH	hex head	SFH	slotted fillister head
HHF	hex head flange	SH	square head
HHST	hex head self tapping	SHWH	slotted hex washer head
HJ	hex jam	SPH	slotted pan head
HOC	height-of-cut	STD	standard
HS	hex socket	TAP	self tapping
HSBH	hex socket button head	TH	truss head
HSFH	hex socket flat head	TTH	Torx truss head
HSH	hex socket head	WH	wing head
HWH	hex washer head		

Important Format Explanations

This catalog uses special formats to convey information in illustrations and parts lists. Specifically, one format is used in conjunction with service assemblies and another with quantities associated with reference numbers.

Service Assemblies

Parts within service assemblies have reference numbers in the form $X:Y$. X is the reference number of the service assembly and Y is a sequential number unique to each part within the service assembly.

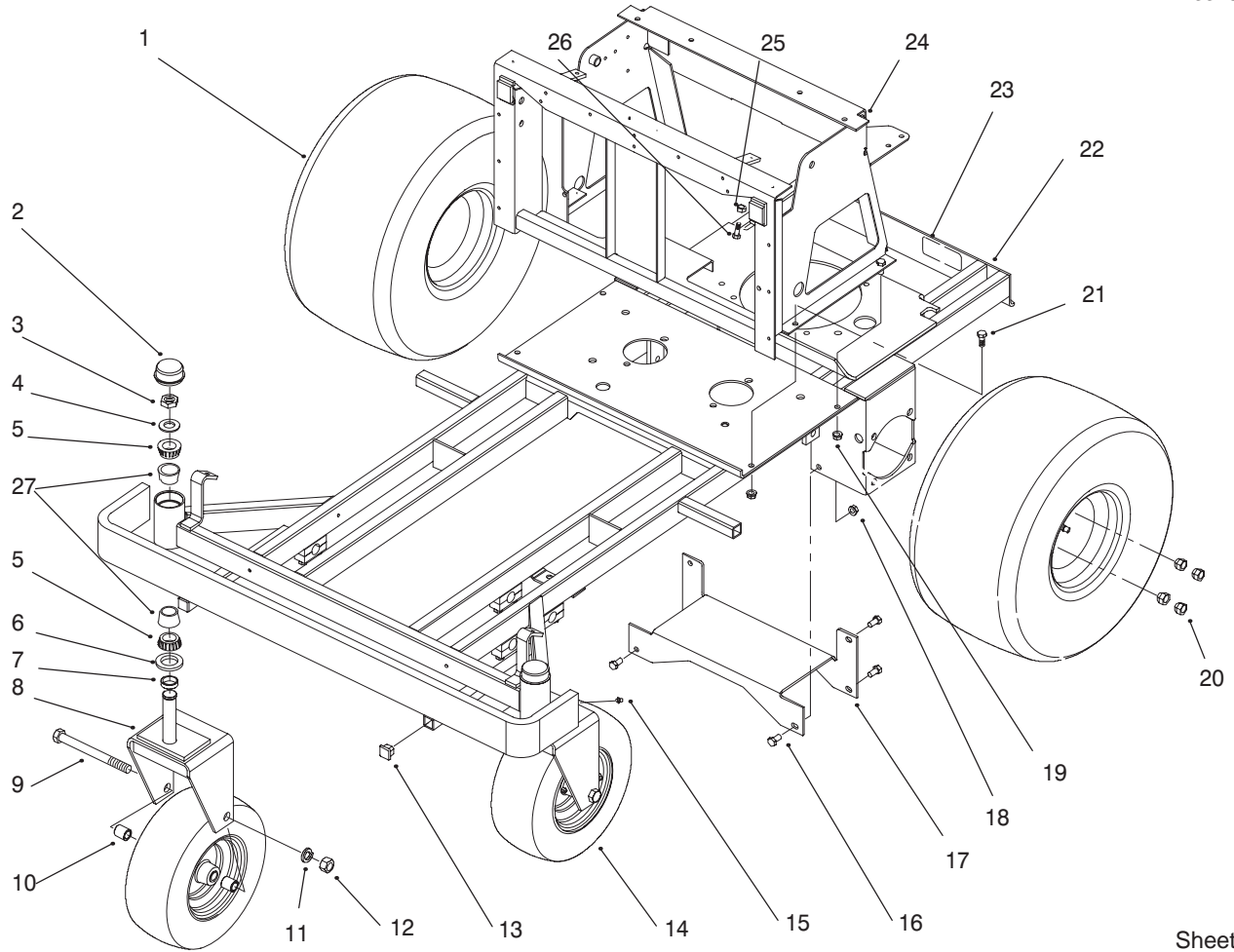
For example, a wheel assembly might be identified by reference number 6, the tire by 6:1, the valve by 6:2, and the wheel by 6:3. When you order the assembly identified by reference number 6, you receive all parts identified by reference numbers 6:1, 6:2, and 6:3. However, you may also order any part individually.

Reference numbers of this type appear in part lists and as callouts in illustrations.

Reference Numbers with Quantities

Illustrations may have a quantity in parentheses next to a reference number, in the form $X (Y)$. X is the reference number. Y in parentheses is the quantity of the part identified by the reference number.

For example, the illustration callout 4 (2) indicates that two parts are used in that instance.

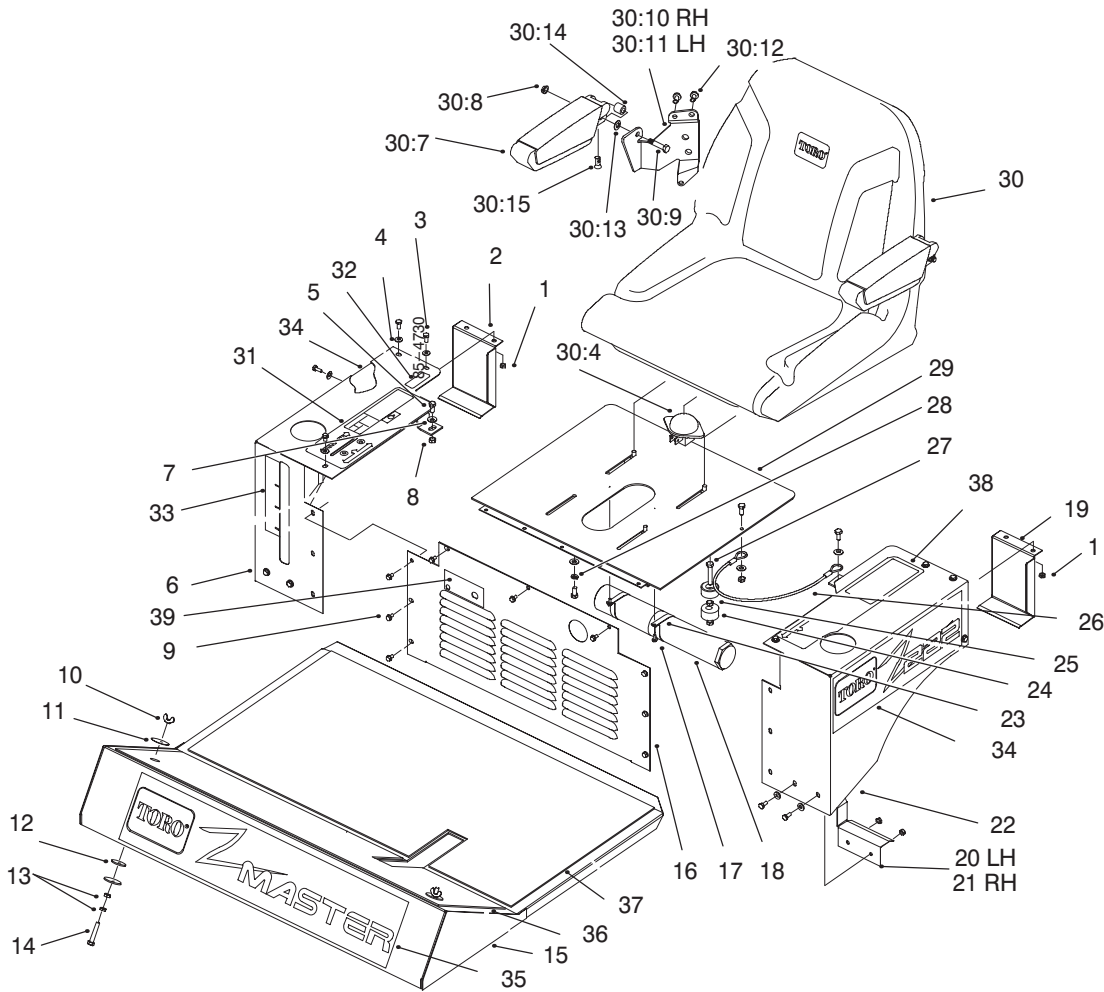


Sheet No.: 2

Frame and Wheels

Ref. No.	Part No.	Qty.	Description
1	94-6126	2	Wheel And Tire ASM
2	241-119	2	Dust Cap
3	3296-15	2	Nut-HH
4	3256-28	2	Washer-Flat
5	254-94	4	Cone-Bearing
6	253-129	2	Seal-Oil
7	94-6242	2	Spacer
8	94-6241	2	Castor ASM
9	327-15	2	Bolt-HH
10	92-1715	4	Spacer
11	3253-8	2	Washer-Lk
12	3217-30	2	Nut-HH
13	115226	2	Plug-Square
14	94-6125	2	Wheel And Tire ASM
15	302-5	2	Fitting-Grease
16	323-4	6	Screw-HH
17	94-6115	1	Bracket-Motor
18	32128-43	6	Nut-Whiz Flg
19	3296-39	4	Nut-Lock
20	242-50	8	Nut-Lug
21	323-5	4	Screw-HH
22	94-6101	1	Frame ASM
23	66-6840	1	Decal-Hot Surface
24	94-6117	1	Seat Frame ASM
25	3217-6	2	Nut-Hex

Ref. No.	Part No.	Qty.	Description
26	322-5	2	Screw-HH
27	254-72	4	Bearing-Taper

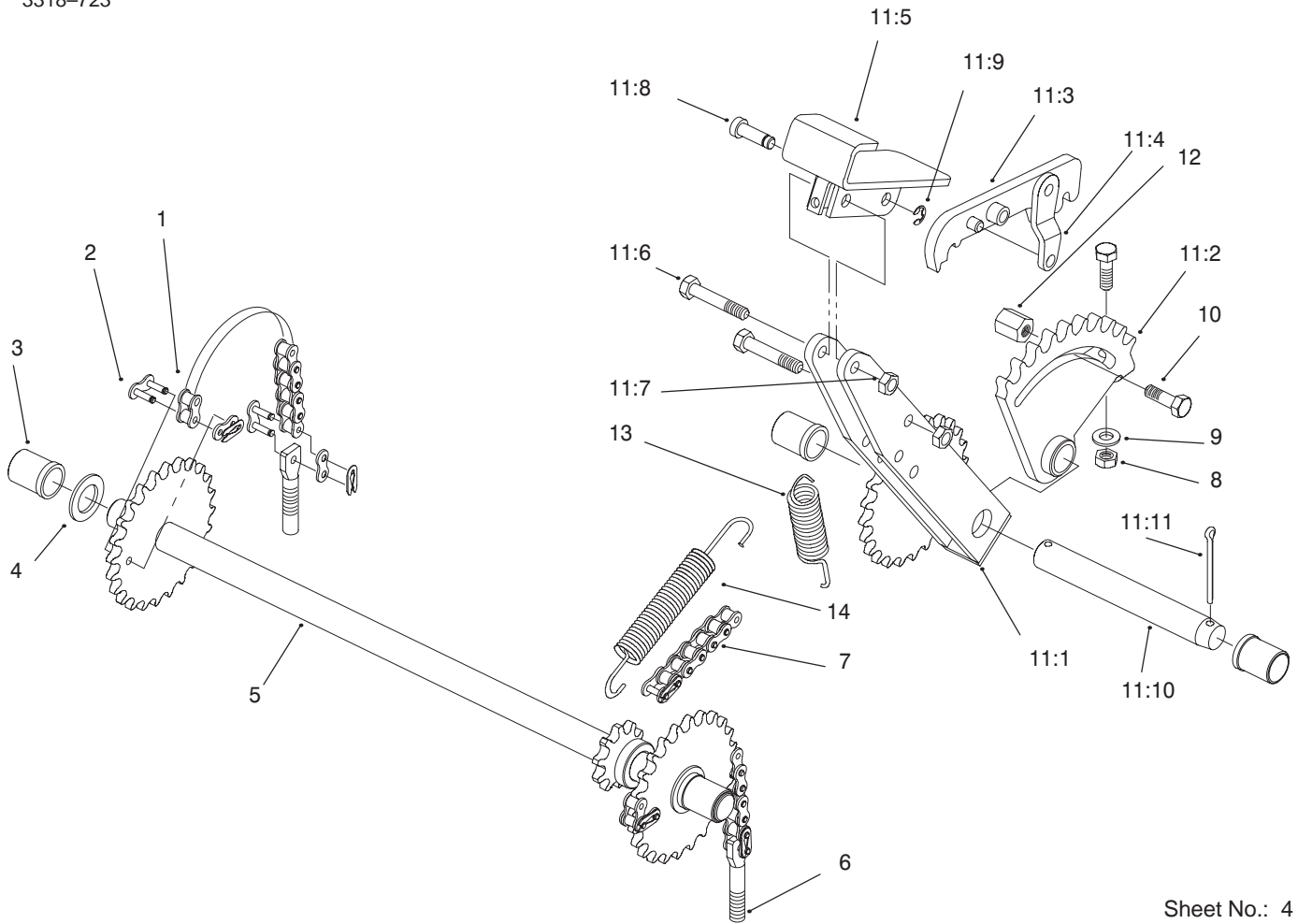


Sheet No.: 3

Seat and Fenders

Ref. No.	Part No.	Qty.	Description
1	3296-42	10	Nut-Lock
2	111909	1	Bracket-Fender Rear RH
3	321-3	10	Screw-HH
4	3256-22	12	Washer-Flat
5	322-3	7	Screw-HH
6	94-6263	1	ASM-Fender Incl.31-34
7	3256-2	7	Washer-Flat
8	3296-29	7	Nut-Lock
9	32144-4	11	Screw-TAP
10	9155854	2	Nut-Wing
11	3256-68	4	Washer-Flt
12	107675	2	Washer-Rbr
13	3217-6	4	Nut-Hex
14	322-41	2	Screw-HH
15	111891	1	Floor Pam ASM
16	79-2710	1	Panel-Front
17	32144-1	2	Screw-HH
18	74-0720	1	Tube-Manual
19	111910	1	Bracket-Fender Rear LH
20	111912	1	Bracket-Fender Frt LH
21	111911	1	Bracket-Fender Frt RH

Ref. No.	Part No.	Qty.	Description
22	94-6266	1	ASM-Fender Incl. 34-38
23	2412-120	2	Clamp-"R"
24	94-6148	2	Spacer-Seat
25	116839	2	Bumper
26	115850	1	Cable-Seat
27	322-9	2	Screw-HH
28	3253-4	4	Washer-Lock
29	94-6127	1	Seat Plate ASM
30	94-6286	1	ASM-Seat
30:1	92-6534	1	Shell-Seat Cushion
30:2	92-6533	1	Kit-Replacement
30:3	351-78	1	Edging
30:4	92-6282	1	Seat-Switch
30:5	321-3	2	Screw-HH
30:6	351-80	1	Edging Clip
30:7	69-1180	2	Armrest-Black
30:8	32128-19	2	Nut-Lock
30:9	323-9	2	Screw-HH
30:10	69-0770	1	Bracket-Arm RH

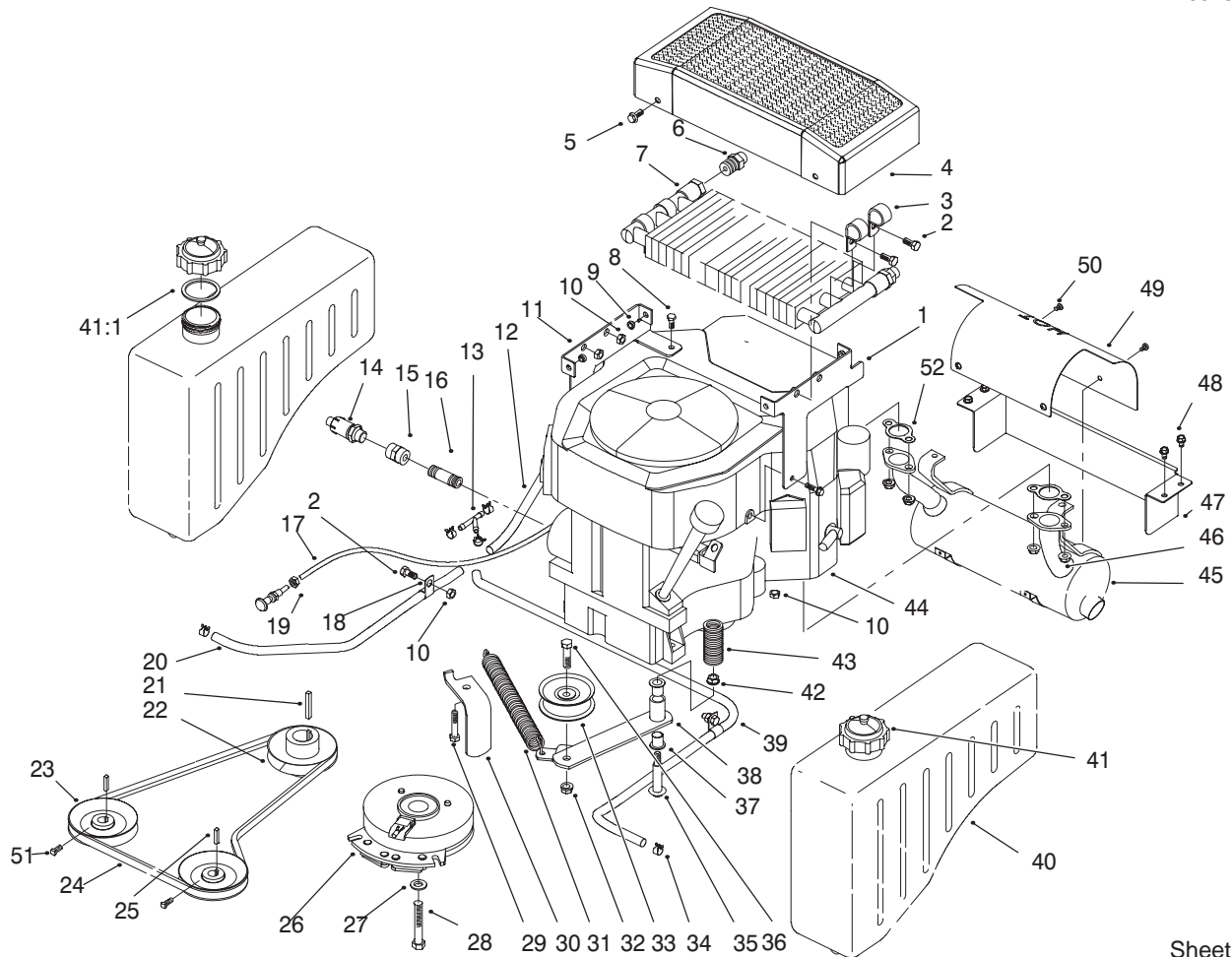


Sheet No.: 4

Deck Height Control

Ref. No.	Part No.	Qty.	Description
1	113699	2	Deck Lift Chain
2	6392	5	Master Link
3	113687	4	Bearing-Flanged
4	9202254	2	Washer-Special
5	113684	1	ASM-Sprocket
6	113697	2	Eye Bolt
7	115855	1	Chain-Foot Pedal Drive
8	3296-29	1	Nut-Lock
9	3256-23	1	Washer-Flat
10	322-5	2	Screw-HH
11	115024	1	ASM-Deck Hgt Control
11:1	112957	1	ASM Lever Arm & Spkt
11:2	112958	1	Spkt-Hgt Cont w/Bush
11:3	112956	1	Pawl-Lift Arm
11:4	112955	1	Link-Pivot
11:5	112954	1	Pedal-Foot
11:6	322-9	2	Screw-HH
11:7	3296-29	2	Nut-Lock
11:8	114613	1	Pin-Lock
11:9	100307	1	E-Ring
11:10	113149	1	Pin - Pedal Pivot
11:11	3272-19	2	Pin-Cotter

Ref. No.	Part No.	Qty.	Description
12	112941	1	Nut-HH
13	113081	1	Spring-Ext
14	114183	1	Foot Spring-Long

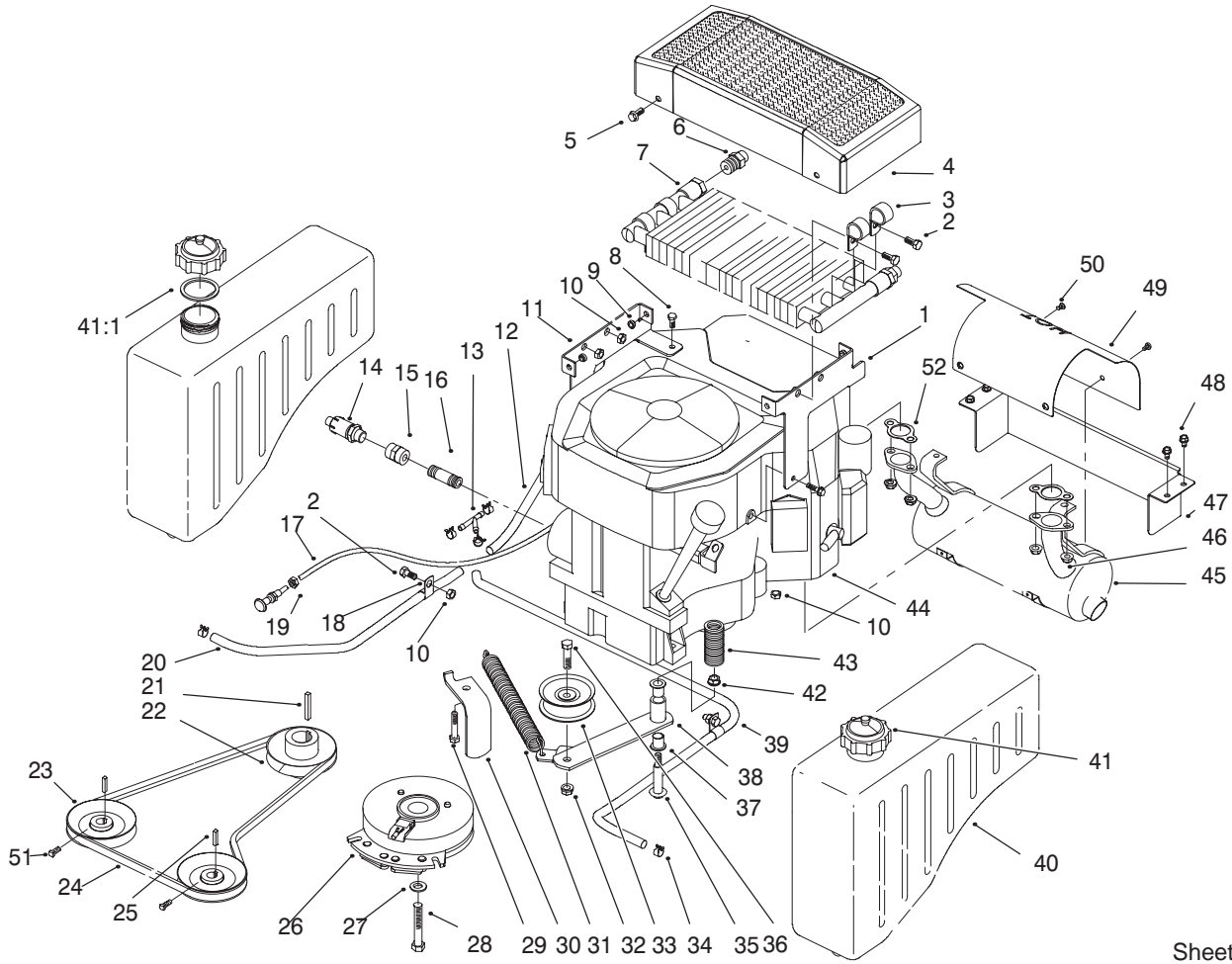


Sheet No.: 5

Engine and Fuel Systems

Ref. No.	Part No.	Qty.	Description
1	94-6142	1	Bracket-Cooler
2	322-3	6	Screw-HH
3	2412-39	4	R-Clamp
4	94-6199	1	Cooler Shroud ASM
5	3234-4	4	Screw-HH
6	93-5107	2	Fitting-Adapter
7	24-0760	1	Exchanger-Heat
8	321-39	2	Screw-HH
9	32148-6	4	Insert
10	3296-29	10	Nut-Lock
11	94-6141	1	Bracket-Cooler
12	94-6279	1	Hose-Gas
13	111879	1	Fitting-Fuel
14	92-6877	1	Valve-Oil Drain
15	2810-7	1	Coupling-Pipe
16	289-42	1	Nipple-Pipe
17	94-6167	1	Control-Choke
18	2412-10	2	R-Clamp
19	3220-3	1	Nut-Hex Jam
20	47-2987	1	Hose-Gas
21	7-0238	1	Key-Square
22	94-6134	1	Pulley-Engine
23	82-4380	2	Pulley-Pump
24	94-6140	1	V-Belt
25	80-6090	2	Key-Square
26	94-6136	1	Clutch-Elec

Ref. No.	Part No.	Qty.	Description
27	3256-25	1	Washer-Fit
28	3212-11	1	Screw
29	322-9	4	Screw-HH
30	94-6135	1	Stop-Clutch
31	94-6230	1	Spring-Extension
32	3296-39	1	Nut-Lock
33	94-6236	1	Pulley-Idler
34	2412-98	6	Clamp-Hose
35	27-6231	1	Bolt-Wheel
36	323-8	1	Screw-HH
37	256-155	2	Bushing-Flange
38	94-6138	1	Lever-Idler
39	94-6205	1	Hose-Gas
40	78-3270	2	Fuel Tank ASM
41	110352	2	ASM-Cap
41:1	106931	2	Gasket
42	3296-6	1	Nut-Lock
43	88-1880	1	Spring-Compression
44		1	Engine ASM
45	94-6210	1	Muffler-Engine
46	92-6780	4	Nut-HHF
47	94-6219	1	Shield-Heat
48	32144-4	4	Screw-TAP
49	94-6211	1	Shield-Heat
50	9103312	4	Screw
51	3241-5	4	Set Screw

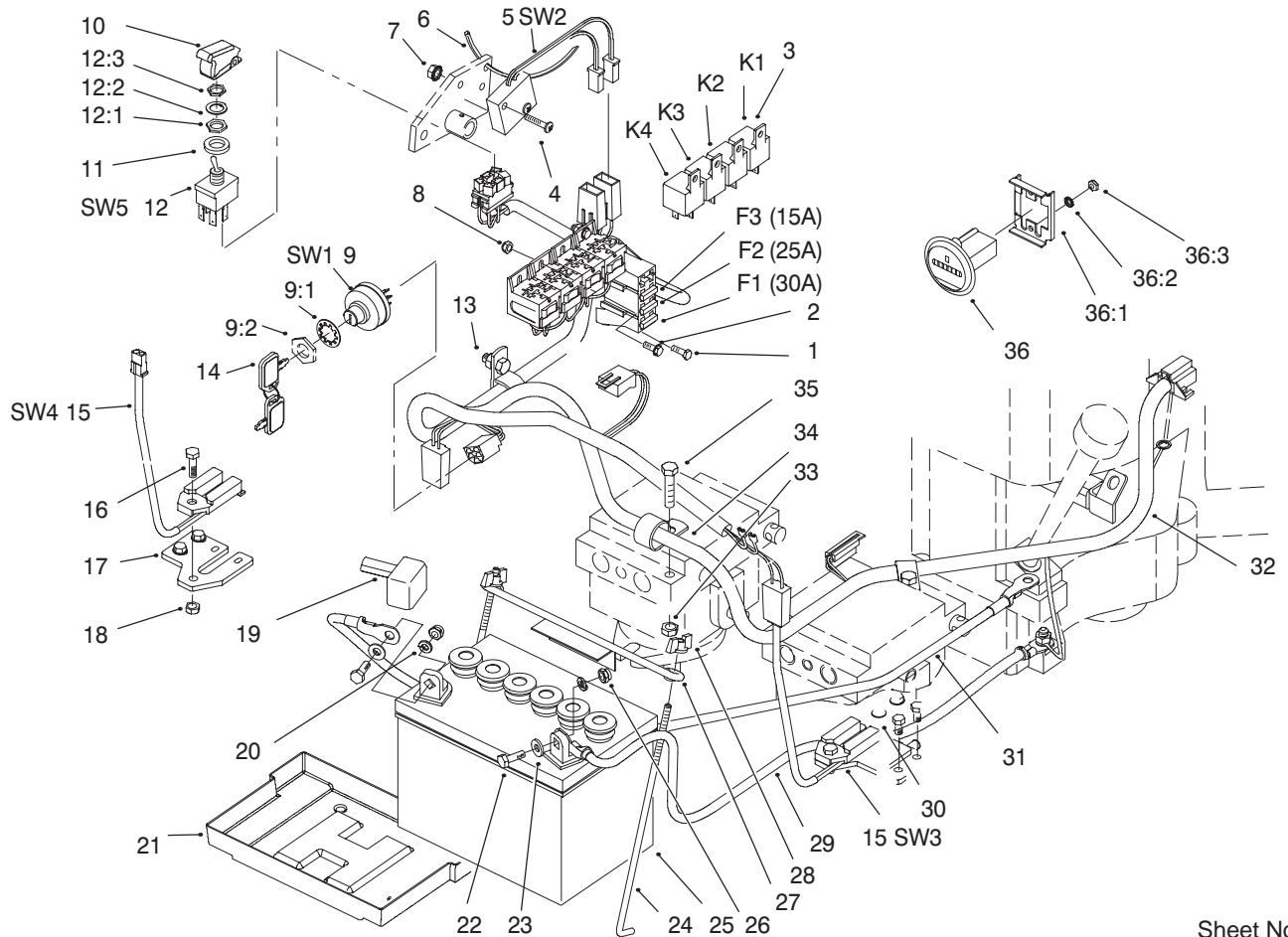


Sheet No.: 5

Engine and Fuel Systems

Ref. No.	Part No.	Qty.	Description
52	93-0350	2	Gasket-Exhaust

Ref. No.	Part No.	Qty.	Description

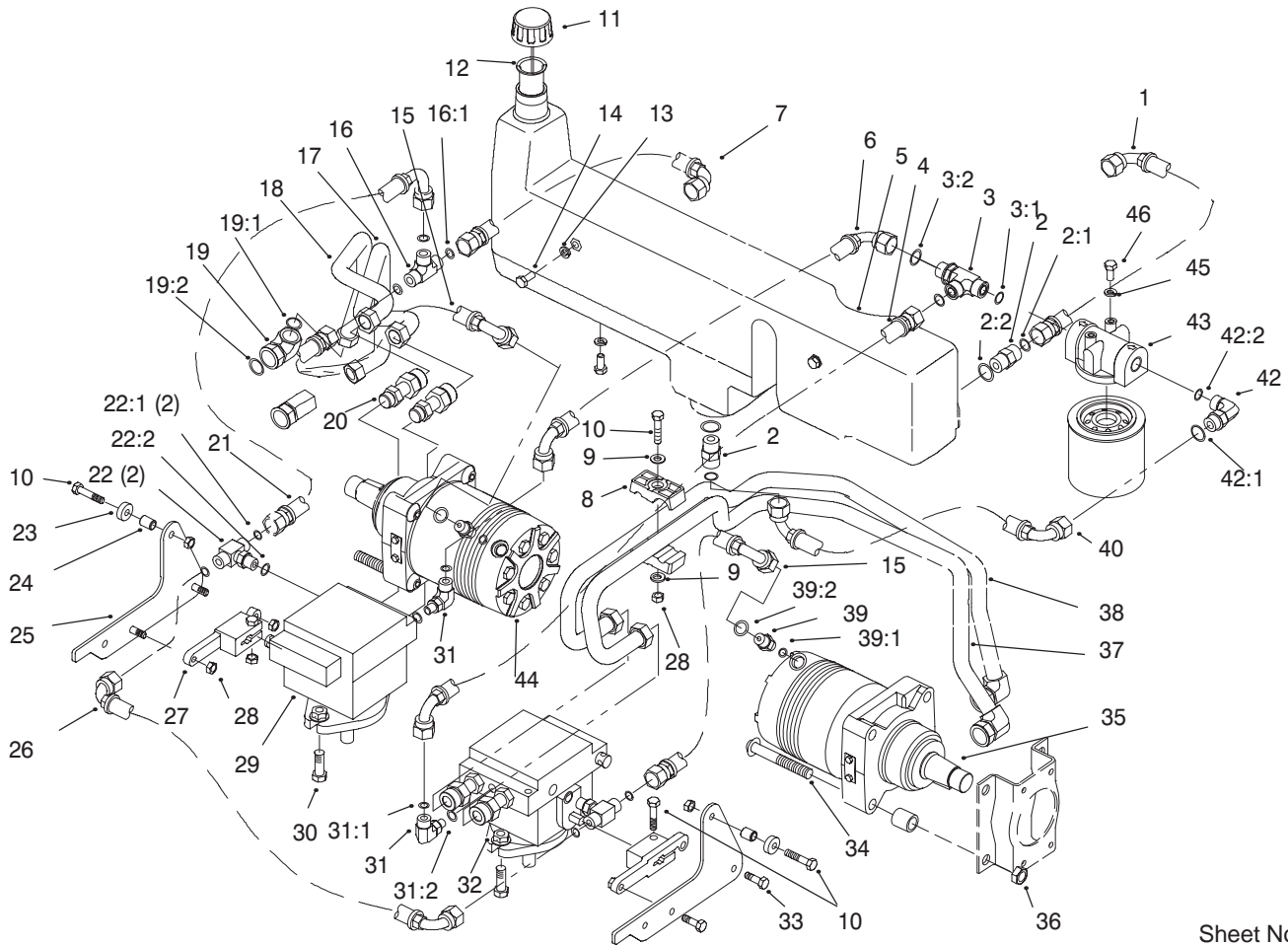


Sheet No.: 6

Electrical Systems

Ref. No.	Part No.	Qty.	Description
1	3290-134	2	Screw-HH
2	32105-2	2	Screw-HH
3	116397	4	Relay
4	9107964	2	Screw
5	116237	1	Switch
6	3290-378	1	Tie-Cable
7	32149-7	2	Nut-Keps
8	3296-2	4	Nut Lock
9	111216	1	Switch-Key
9:	101884	1	Nut-Hex
9:	9201604	1	Washer-Lock
10	113050	1	Cover-Switch
11	9202424	1	Washer-Flt
12	92-9811	1	Switch-Toggle
12:1	105805	1	Nut-Hex Special F/W
12:2	102950	1	Washer-Tab
12:3	113179	1	Nut-Hex (Facenut) F/W
13	322-3	1	Screw-HH
14	62-7770	2	Key-Ignition
15	684368	2	Switch ASM
16	321-5	2	Screw-HH
17	94-6184	2	Plate-Mount
18	3296-42	2	Nut-Lock
19	109553	1	Boot-Battery Cable
20	3253-3	2	Washer-Lock

Ref. No.	Part No.	Qty.	Description
21	106948	1	Tray-Battery
22	321-4	2	Screw-HH
23	3256-22	2	Washer-Flat
24	94-6146	2	Retainer-Battery
25	115877	1	Battery
26	3296-16	2	Nut-Lock
27	113010	1	Hold Down
28	32103-22	2	Nut-Wing
29	94-6168	1	Wire-Battery
30	32144-4	4	Screw-TAP
31	94-6204	1	Wire-Battery
32	94-6203	1	Harness-Main
33	3296-29	3	Nut-Lock
34	2412-39	3	R-Clamp
35	322-7	2	Screw-HH
36	78-0020	1	Hourmeter
36:1	78-3320	1	Clamp-Hour Meter
36:2	3255-25	2	Washer-Lock
36:3	3217-27	2	Nut-HH

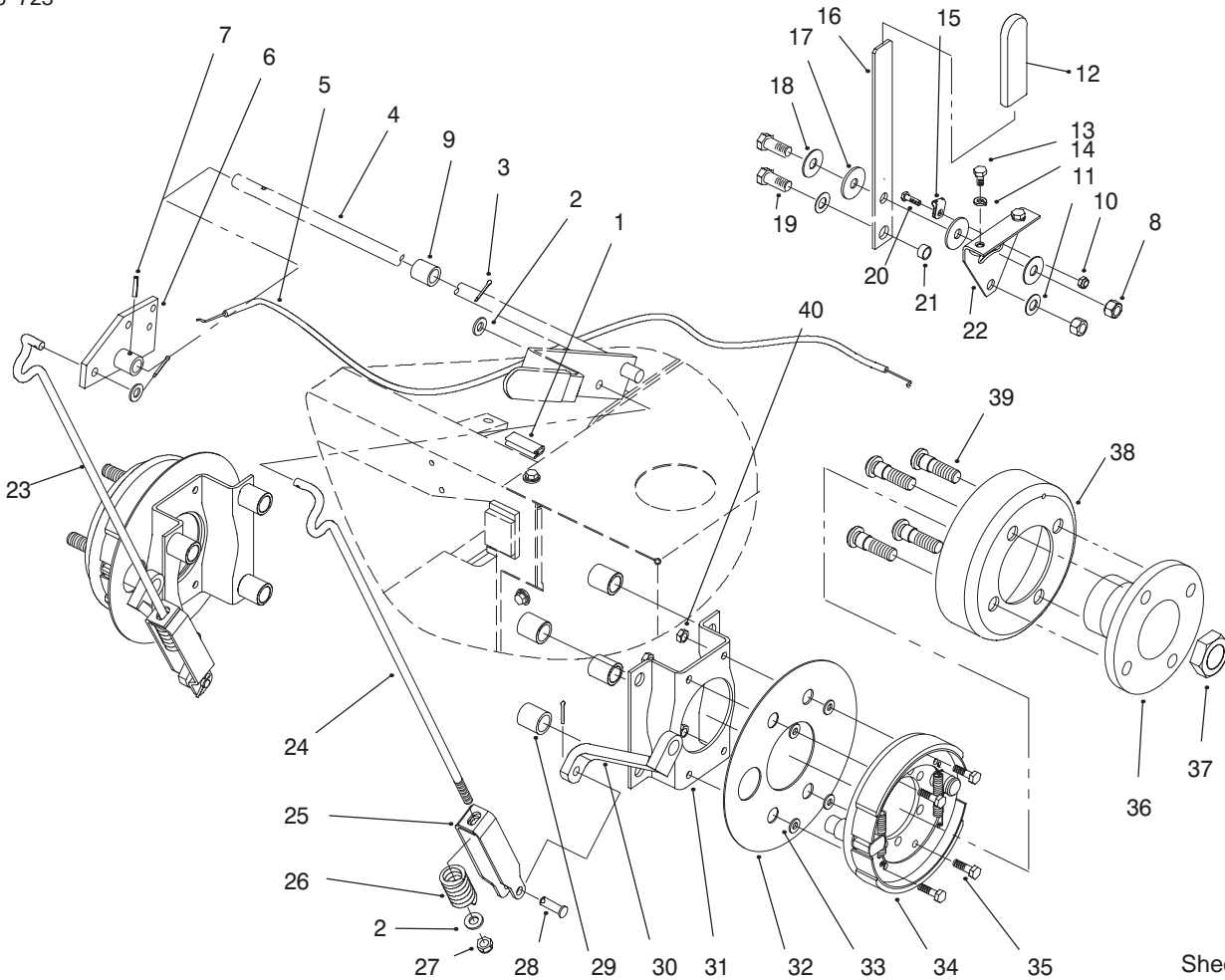


Sheet No.: 7

Hydraulic Systems

Ref. No.	Part No.	Qty.	Description
1	94-6244	1	Hose ASM-Hyd
2	340-4	2	Ftg-Hyd
2:1	237-30	2	O-Ring #8
2:2	237-79	2	O-Ring
3	340-109	1	Fitting-Tee
3:1	237-79	1	O-Ring
3:2	237-30	2	O-Ring #8
4	94-6246	1	Hose ASM-Hyd
5	94-6133	1	Reservoir-Oil
6	94-6247	1	Hose ASM-Hyd
7	94-6249	1	Hose ASM-Hyd
8	56-7971	2	Clamp-Tube
9	3256-23	2	Washer-Flat
10	322-7	5	Screw-HH
11	94-6160	1	Oil Cap ASM
12	94-6159	1	Screen-Filler
13	3253-4	4	Washer-Lock
14	322-2	4	Screw-HH
15	94-6251	2	Hose ASM-Hyd
16	340-20	1	Fitting
16:1	237-22	3	O-Ring #6
17	94-6153	1	Tube ASM-Right
18	94-6149	1	Tube ASM-Right
19	340-17	4	Ftg-Hyd 90
19:1	237-65	4	O-Ring
19:2	237-80	4	O-Ring

Ref. No.	Part No.	Qty.	Description
20	94-6150	4	Fitting-Hydraulic
21	94-6248	1	Hose ASM-Hyd
22	340-94	2	Tee
22:1	237-22	4	O-Ring #6
22:2	237-42	2	O-Ring #6
23	251-259	2	Bearing-Ball
24	88-7450	2	Spacer
25	94-6151	2	Arm-Follower
26	94-6245	1	Hose ASM-Hyd
27	82-3790	2	Arm-Control
28	3296-29	9	Nut-Lock
29	82-8220	2	Pump-Hydraulic
30	324-5	4	Screw-HH
31	340-97	2	Fitting
31:1	237-22	2	O-Ring #6
31:2	237-78	2	O-Ring
32	32128-42	4	Nut-Hex Flange
33	322-5	4	Screw-HH
34	3274-100	8	Screw-HSH
35	94-6157	1	Motor-Hydraulic Wheel
36	3296-23	8	Nut-Lock
37	94-6152	1	Tube ASM-Left
38	94-6155	1	Tube ASM-Left
39	340-1	2	Fitting-Hyd
39:1	237-42	2	O-Ring #6

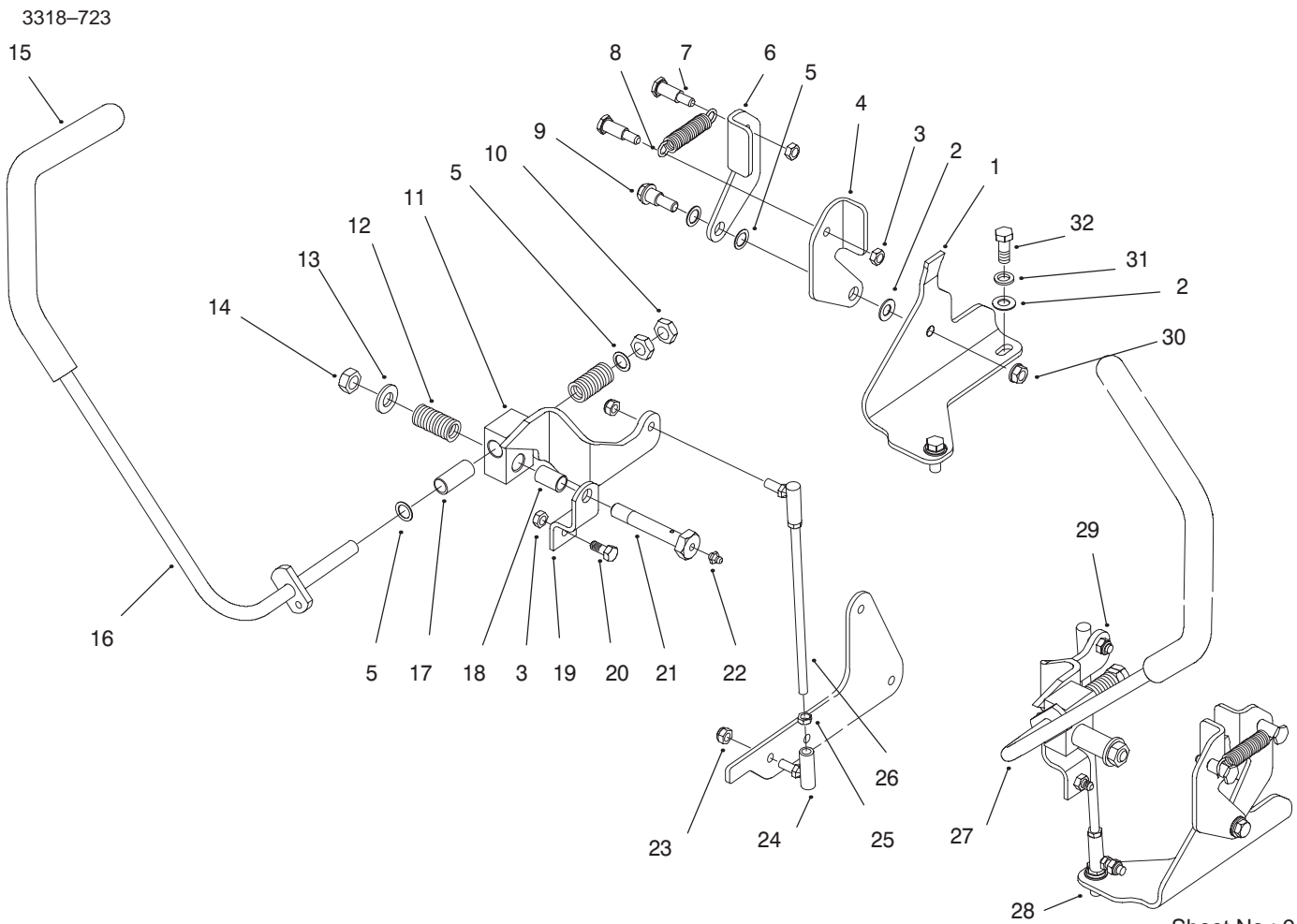


Sheet No.: 8

Parking Brake

Ref. No.	Part No.	Qty.	Description
1	115200	1	Trim-Edge
2	3256-23	4	Washer-Flat
3	3272-6	4	Pin-Cotter
4	94-6166	1	Brake Handle ASM
5	94-6154	1	ASM-Control
6	116478	1	Brake-Parking
7	32121-114	1	Pin
8	108881	2	Nut-Hex
9	113665	1	Spacer-Parking Brake
10	3296-2	1	Nut Lock
11	3256-24	2	Washer-Flat
12	62-9130	2	Grip - Handle
13	321-2	2	Screw-HH
14	3253-3	2	Washer-Lock
15	2412-58	1	Clamp
16	79-4800	1	Handle
17	100305	2	Washer-Friction
18	100365	2	Washer-Spring Disc
19	323-6	2	Screw-HH
20	3290-134	1	Screw-HH
21	6331	1	Spacer-Clutch Arm
22	94-6262	1	Bracket-Control
23	94-6164	1	Rod-Brake
24	94-6163	1	Rod-Brake
25	94-6226	2	Clevis-Brake
26	94-6207	2	Spring-Compression

Ref. No.	Part No.	Qty.	Description
27	3296-4	2	Nut-Lock
28	283-1	2	Pin-Clevis
29	92-1715	8	Spacer
30	94-6182	2	Brake Lever ASM
31	84-2000	2	Bracket-Brake
32	83-9340	2	Shield-Grass Brake
33	3256-16	8	Washer-Flat
34	71-1500	2	Brake ASM
35	321-5	8	Screw-HH
36	93-6838	2	Hub-Wheel
37	26-3790	2	Nut-Lock
38	10-6850	2	Drum Brake
39	85-6540	8	Drive Type Stud
40	3296-42	8	Nut-Lock

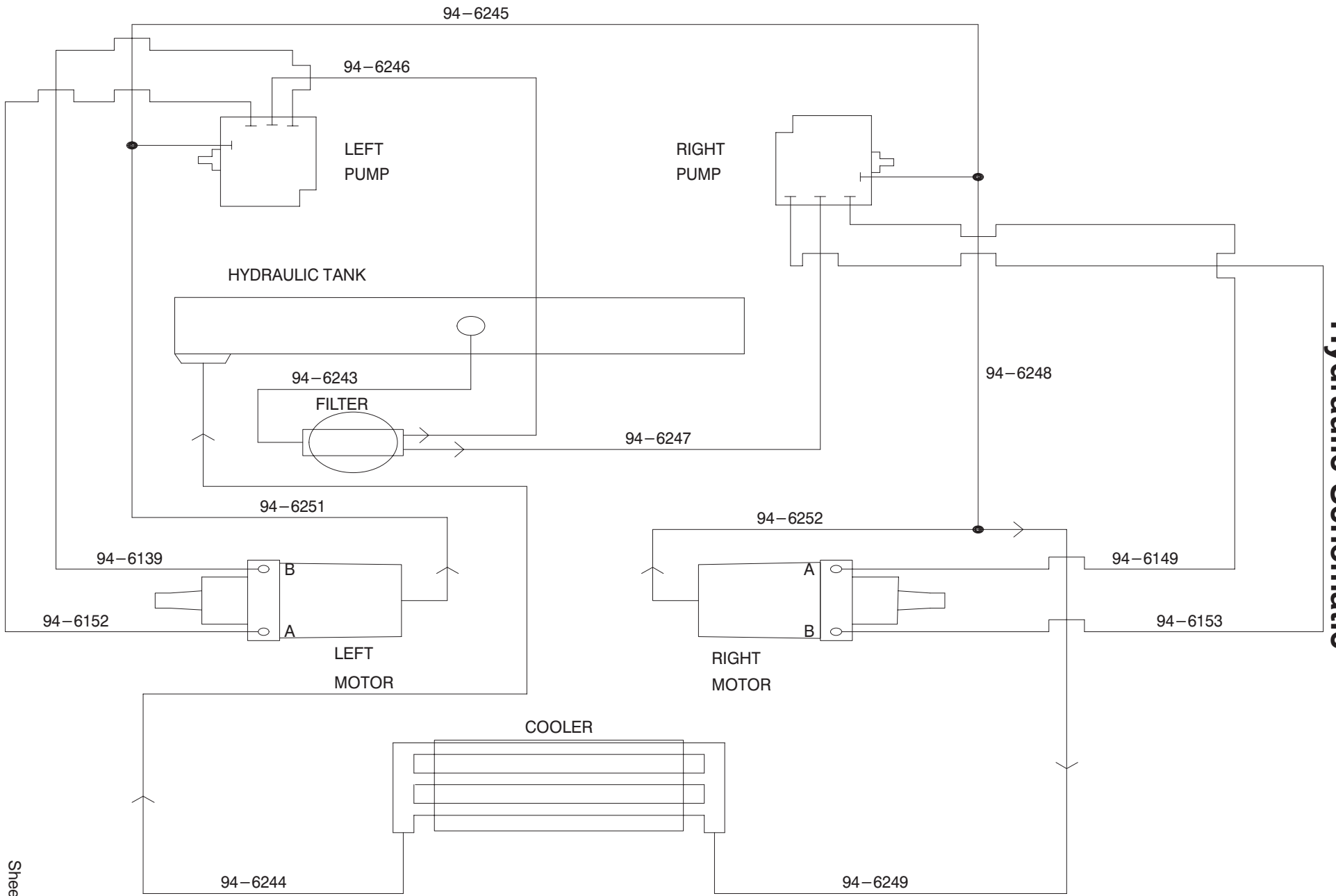


Sheet No.: 9

Steering Systems

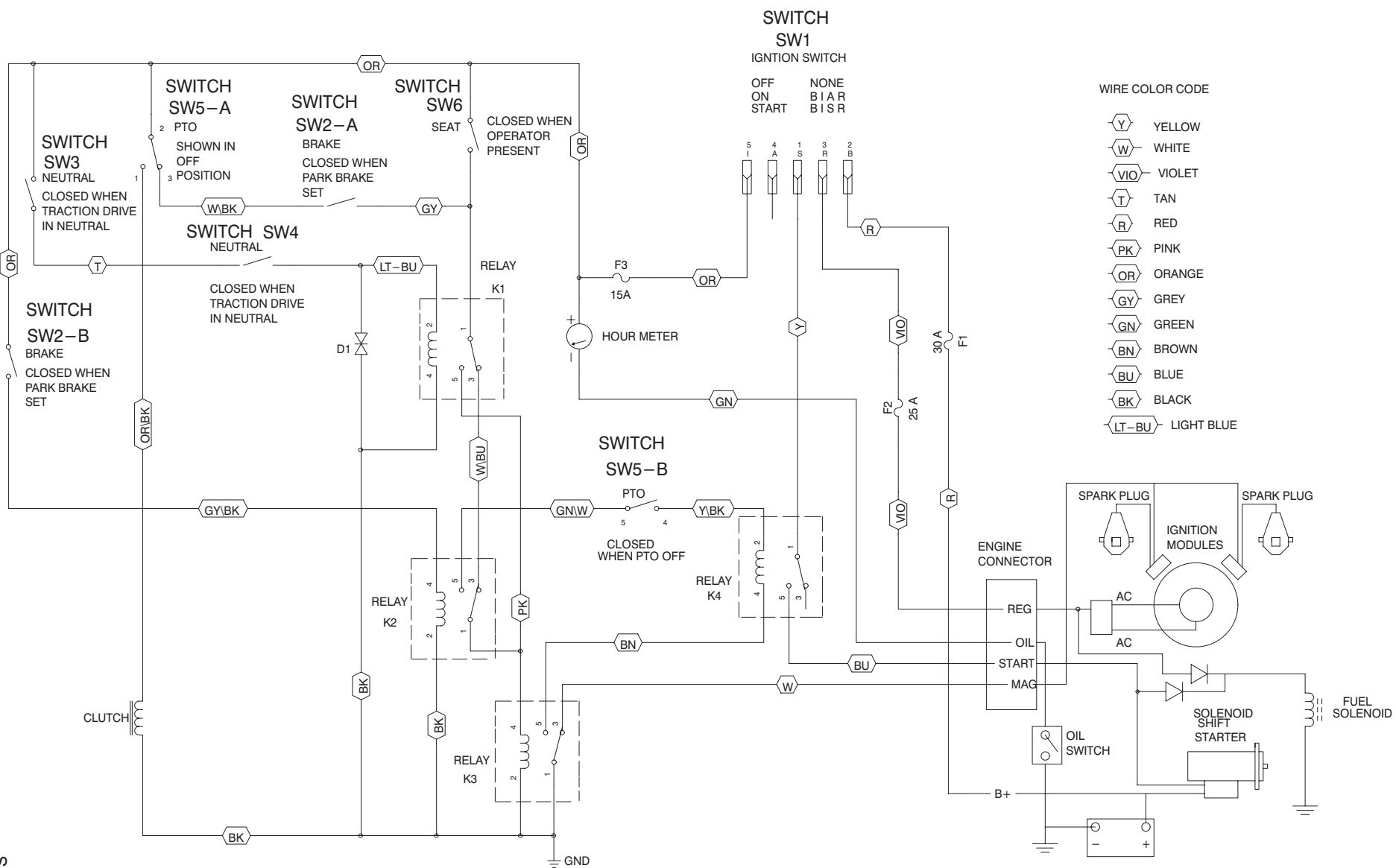
Ref. No.	Part No.	Qty.	Description
1	94-6169	1	Bracket-Neutral
2	3256-24	6	Washer-Flat
3	3296-29	6	Nut-Lock
4	94-6171	2	Lever-Neutral
5	9202594	8	Washer
6	94-6172	2	Lever-Neutral
7	63-2650	4	Screw-Shoulder
8	94-6212	2	Spring-Extension
9	94-6177	2	Bolt-Shoulder
10	3218-5	4	Nut-Jam
11	94-6174	1	Steering Arm ASM
12	113632	4	Spring-Compression
13	3256-26	2	Washer-Flt
14	3296-23	2	Nut-Lock
15	94-6255	2	Grip-Cushion
16	94-6253	1	RH Lever ASM
17	113675	2	Bushing-Str Lever Pivot
18	115295	2	Bushing
19	79-0560	2	Strap-Pivot
20	322-3	2	Screw-HH
21	116460	2	Bolt
22	302-5	2	Fitting-Grease
23	3296-4	4	Nut-Lock
24	2411-33	4	Ball Joint
25	3220-2	4	Nut-Hex

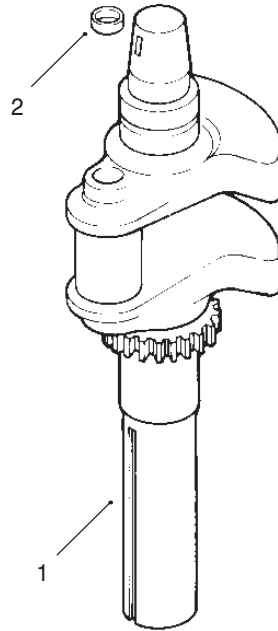
Ref. No.	Part No.	Qty.	Description
26	94-6178	2	Rod-Control
27	94-6254	1	LH Lever ASM
28	94-6170	1	Bracket-Neutral
29	94-6175	1	Steering Arm ASM
30	3296-39	2	Nut-Lock
31	3253-21	4	Washer-Lock
32	323-6	4	Screw-HH
34	3318-723	1	Parts Catalog
35	Pi74160	1	Packaging Instructions



Hydraulic Schematic

Electrical Schematic





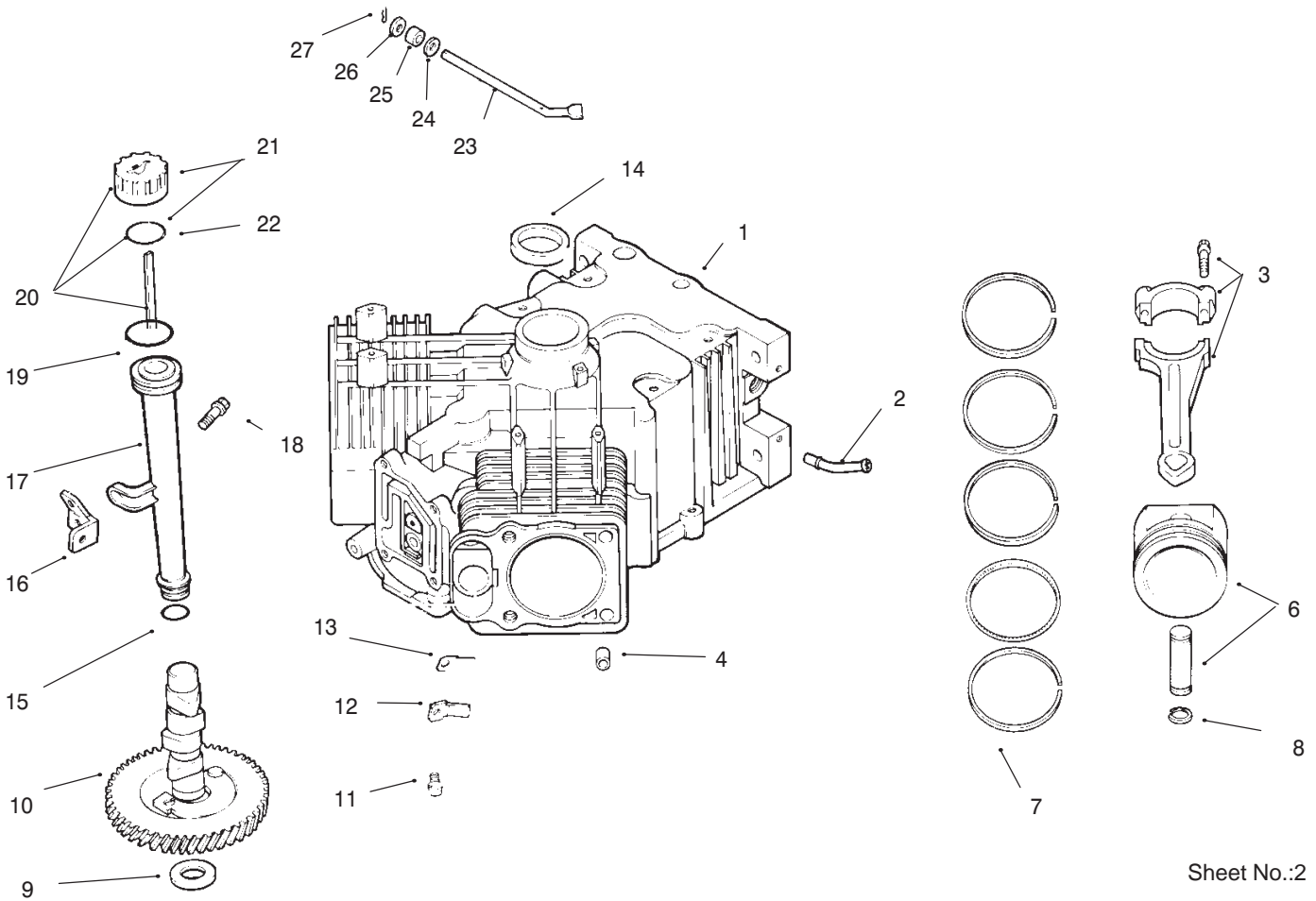
Sheet No.:1

Crankshaft-Kohler #CV22S-67530

Ref. No.	Part No.	Qty.	Description
1	24 014 02	2	Crankshaft
2	52 139 09	2	Plug

Ref. No.	Part No.	Qty.	Description

Obtain parts from your local Kohler dealer



Sheet No.:2

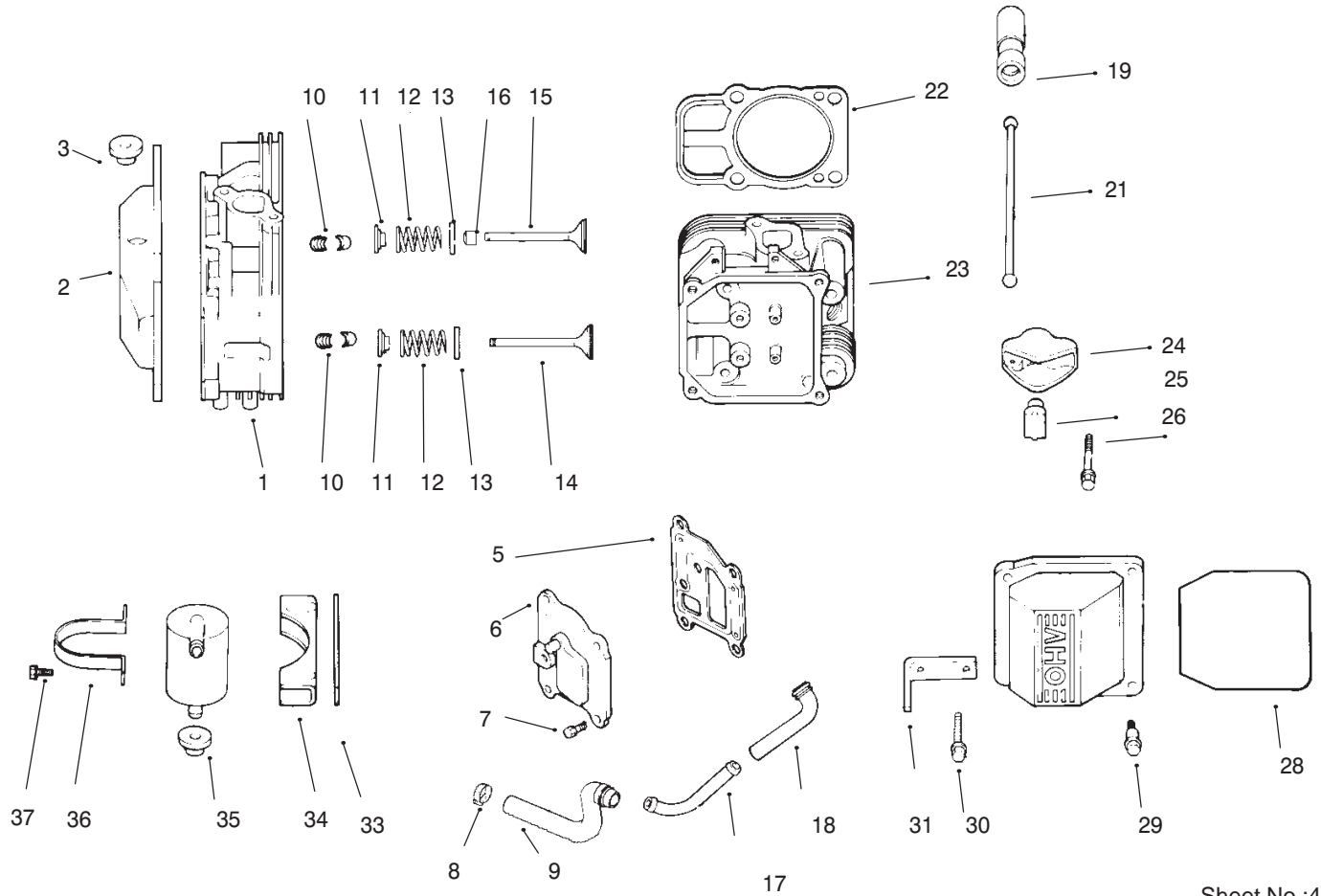
Crankcase-Kohler #CV22S-67530

Ref. No.	Part No.	Qty.	Description
1	24 782 05	1	Cylinder/Miniblock
1	24 522 76	1	Short Block
2	24 294 03	1	Fitting
3	24 067 09	2	Connecting Rod (std)
*	24 067 10	2	Connecting Rod .25
4	12 380 03	6	Pin Locating
5	52 139 09	1	Plug
6	24 874 01	2	Set-Piston w/Ring (std)
*	24 874 02	2	Set-Piston w/Ring .25
*	25 874 03	2	Set-Piston w/Ring .50 (Incl. Ref.# 7-8)
7	24 108 01	2	Set-Ring (std)
*	24 108 02	2	Set-Ring .25
*	24 108 03	2	Set-Ring .50
8	24 018 01	4	Retainer-Piston Pin
9	12 422 09	A/R	Shim-Camshaft red
*	12 422 13	A/R	Shim-Camshaft black
*	12 422 07	A/R	Shim-Camshaft white
*	12 422 08	A/R	Shim-Camshaft blue
*	12 422 10	A/R	Shim-Camshaft yellow
*	12 422 11	A/R	Shim-Camshaft green
*	12 422 12	A/R	Shim-Camshaft gray
10	24 012 05	1	Camshaft
11	M-0545010	2	Screw-Hex. Flange
12	24 018 04	2	Retainer-Reed
13	24 402 05	2	Reed-Breather

Ref. No.	Part No.	Qty.	Description
14	24 032 01	1	Seal-Oil, front
15	12 153 01	1	"O"Ring-Oil Tube
16	24 126 19	1	Bracket-Oil Tube
17	12 123 04	1	Tube-Oil Fill
18	M-0545016	1	Screw-Hex. Flange
19	12 153 02	1	"O"Ring-Oil Fill Tube
20	24 038 04	1	Dipstick Asm (Incl. Ref.# 21-22)
21	25 755 13	1	Kit-Oil Fill Cap (Incl. Ref.# 22)
22	12 153 03	1	"O"Ring-Dipstick
23	24 144 01	1	Shaft-Governor Cross
24	X-25-102	1	Washer-Plain
25	12 032 01	1	Seal-Governor Cross
26	M-0631005	1	Washer-Plain
27	12 380 04	1	Pin-Hitch
*	24 755 03	1	Set-Gasket

*Not Illustrated

Obtain parts from your local Kohler dealer



Sheet No.:4

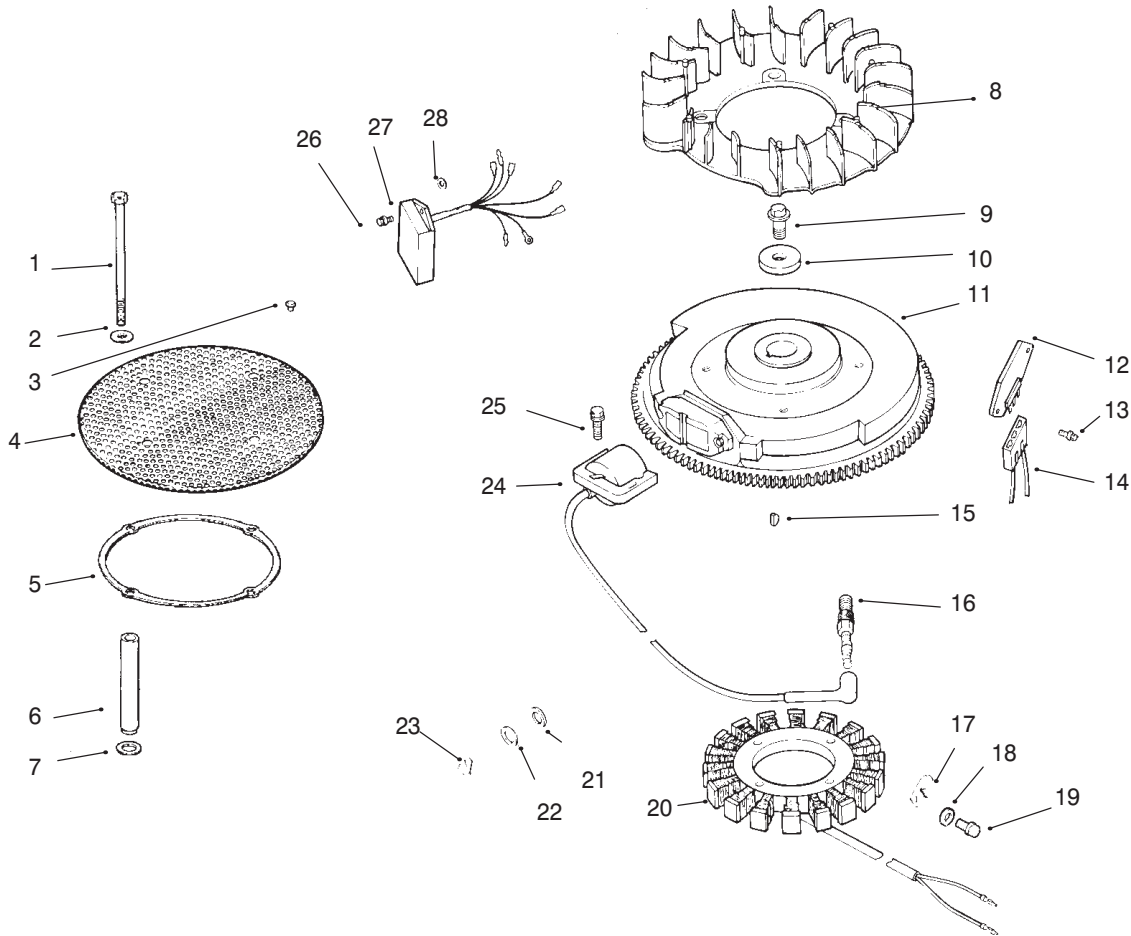
Head / Valve / Breather-Kohler #CV22S-67530

Ref. No.	Part No.	Qty.	Description
1	24 318 11	1	#1 Cyl. Head Asm
2	24 755 76	1	Kit-Valve Cover & Breather (Incl. Ref.# 3, & 28-29)
3	25 313 02	1	Grommet-Rubber
*4	24 033 03	1	Kit-Breather Cover w/Gasket (Incl. Ref.# 5-6)
5	24 041 23	1	Gasket-Breather
6	24 096 15	1	Cover-Breather
7	M-0645020	4	Screw-Hex. Flange
8	X-426-9	2	Clamp-Hose
9	24 326 14	1	Hose-Breather
10	12 755 03	4	Kit-Retainer
11	12 173 01	1	Cap-Valve Spring
12	24 089 02	4	Spring-Valve
13	235011	4	Spring-Retainer
14	24 016 01	2	Valve-Exhaust (std)
*	24 016 02	2	Valve-Exhaust (.25)
15	24 017 01	2	Valve-Intake (std)
*	24 017 02	2	Valve-Intake (.25)
16	24 032 05	2	Seal-Valve Stem
17	24 294 06	1	Fitting
18	24 326 13	1	Hose-Breather
19	12 351 01	4	Lifter-Valve

Ref. No.	Part No.	Qty.	Description
*20	24 755 66	1	Kit-Valve Train (Incl. Ref.#21, 24-25)
21	24 411 05	4	Rod-Push
22	24 041 08	2	Gasket-Cylinder Head
23	24 318 12	1	#2 Cyl. Head Asm,
24	25 186 01	4	Arm-Rocker
25	24 599 01	4	Pivot-Rocker Arm
26	M-0640034	4	Screw-Hex. Flange
27	24 755 74	1	Kit-Valve Cover (Incl. Ref.# 28-29)
28	24 153 12	1	"O"Ring
29	24 086 32	4	Screw-Shoulder
30	12 086 16	8	Screw-Hex. Flange
31	24 445 01	1	Strap-Lifting
*32	24 755 57	1	Kit-Breather Separator (Incl. Ref.# 33-37)
33	24 112 12	1	Spacer
34	24 126 44	1	Bracket-Breather Separator
35	25 313 02	1	Grommet-Rubber
36	24 445 02	1	Strap-Breather
37	M-0545016	2	Screw-Hex. Flange

*Not Illustrated

Obtain parts from your local Kohler dealer



Sheet No.:5

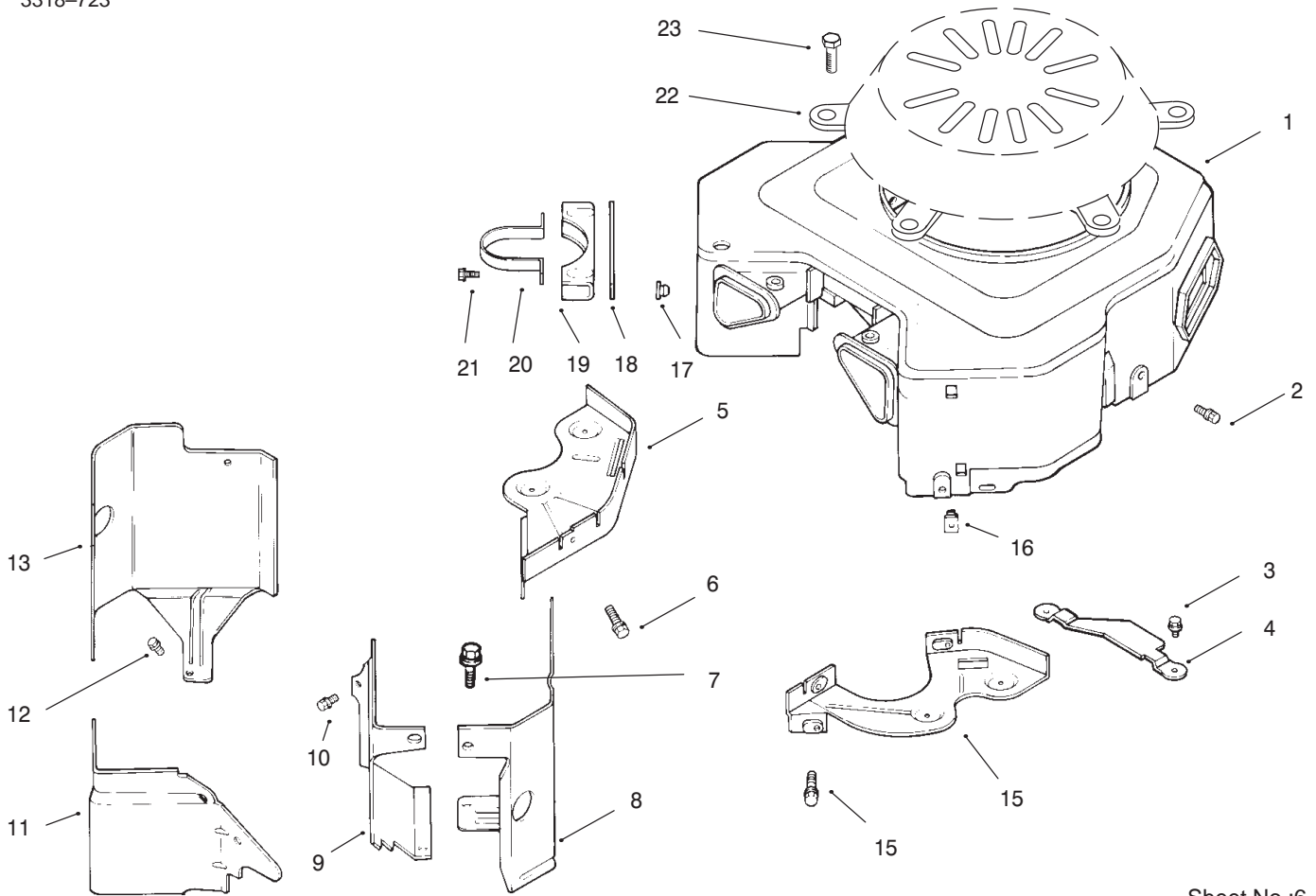
Ignition / Electrical-Kohler #CV22S-67530

Ref. No.	Part No.	Qty.	Description
1	M-0603100	4	Screw-Hex.
2	X-25-53	4	Washer-Plain
3	25 086 43	1	Screw-Set
4	24 162 25	1	Screen-Grass
5	24 141 06	1	Ring-Support
6	24 112 14	4	Spacer-Grass Screen
7	24 468 11	4	Washer-Spring
8	24 157 01	1	Fan
9	12 086 14	1	Screw-Hex. Flange
10	12 468 03	1	Washer-Plain
11	24 025 05	1	Flywheel Asm
12	25 403 03	1	Rectifier-Regulator
13	24 086 18	2	Screw-Phillips
14	236602	1	Connector-3 Contact
15	X-42-15	1	Key
16	12 132 02	2	Spark Plug
17	48 154 02	1	Clip-Cable
18	X-25-92	2	Washer-Plain
19	M-0548025	2	Screw-Hex.
20	24 085 01	1	Stator-15 amp
21	X-25-63	1	Washer-Plain
22	X-25-63	1	Washer-Plain
23	47 154 01	1	Clip-Cable
24	24 584 03	2	Module-Ignition
25	M-0448010	2	Screw-Hex. Socket
26	M-0560025	4	Screw-Hex. Flange

Ref. No.	Part No.	Qty.	Description
27	24 584 05	1	Module-Speed Advance
28	24 468 12	4	Washer-Graphite
*	24 176 16	1	Harness-Wiring
*	25 518 28	1	Lead-Black

*Not Illustrated

Obtain parts from your local Kohler dealer



Sheet No.:6

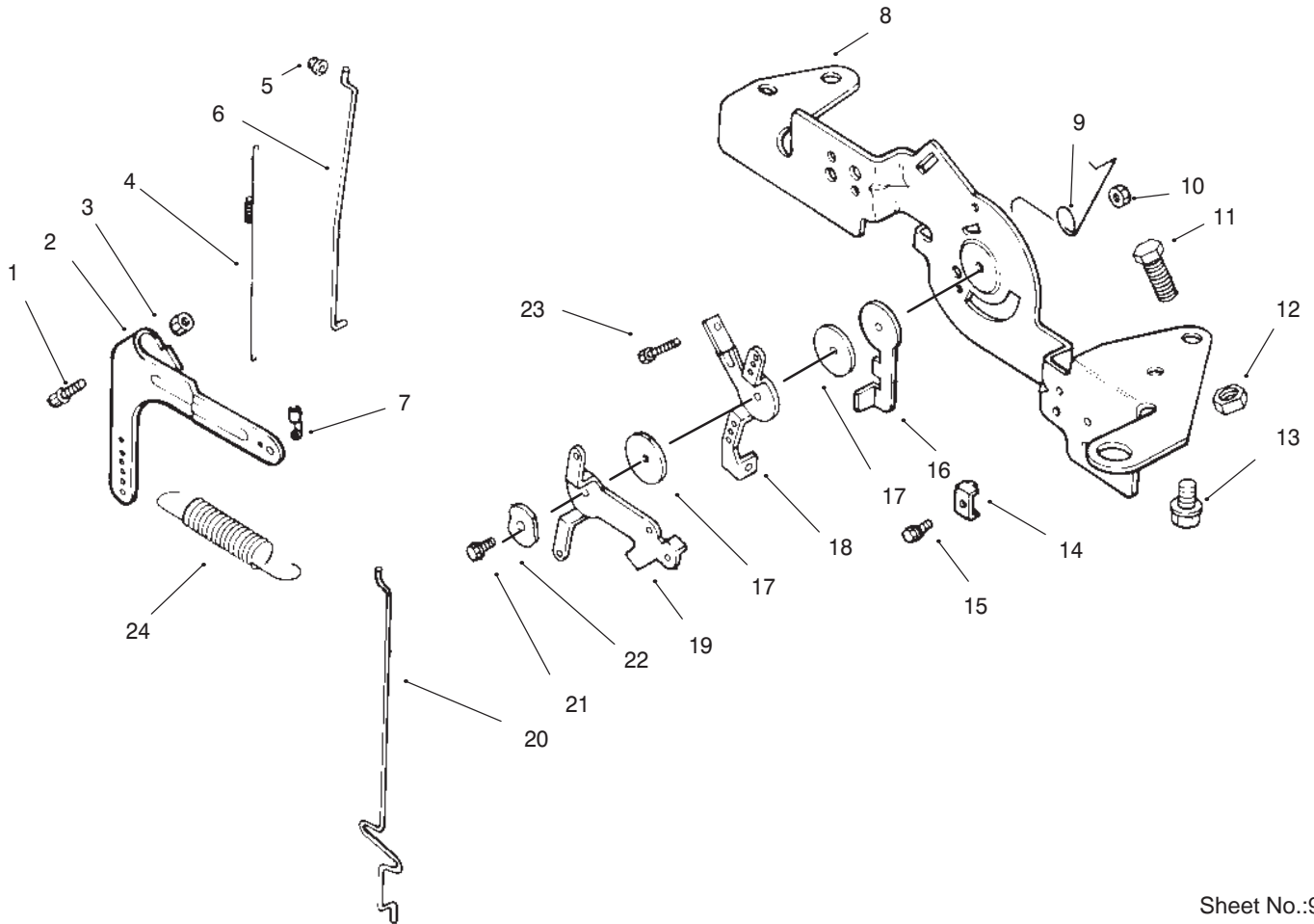
Blower Housing and Baffles-Kohler #CV22S-67530

Ref. No.	Part No.	Qty.	Description
1	24 027 75	1	Housing-Blower
2	M-0545016	2	Screw-Hex. Flange
3	M-0645016	3	Screw-Hex. Flange
4	24 314 05	1	Guard-Flywheel
5	24 146 02	1	Plate-Backing #2 Side
6	M-0545020	2	Screw-Hex. Flange
7	M-0551016	1	Screw-Hex. Flange
8	24 063 20	1	Baffle-Cyl. #2 Side
9	24 063 23	1	Baffle-Valley #1 Side
10	M-0545010	2	Screw-Hex. Flange
11	24 063 13	1	Baffle-Valley #2 Side
12	M-0545016	3	Screw-Hex. Flange
13	24 063 30	1	Baffle-Cyl. #1 Side
14	M-0645016	2	Screw-Hex. Flange
15	24 146 08	1	Plate-Backing #1 Side
16	24 100 01	2	Nut-Plastic
17	24 100 02	2	Nut-Plastic
18	24 112 12	1	Spacer
19	24 126 44	1	Bracket-Breather Separator
20	24 455 02	1	Strap-Breather
21	24 086 27	2	Screw-Hex.
22		1	Kit-Guard
23		5	Screw-hex. Flange
*	24 100 01	4	Nut-Plastic
*	24 100 02	2	Nut-Plastic

Ref. No.	Part No.	Qty.	Description
*	25 086 43	1	Screw-Set
*	24 113 13	1	Decal-Horsepower

*Not Illustrated

Obtain parts from your local Kohler dealer



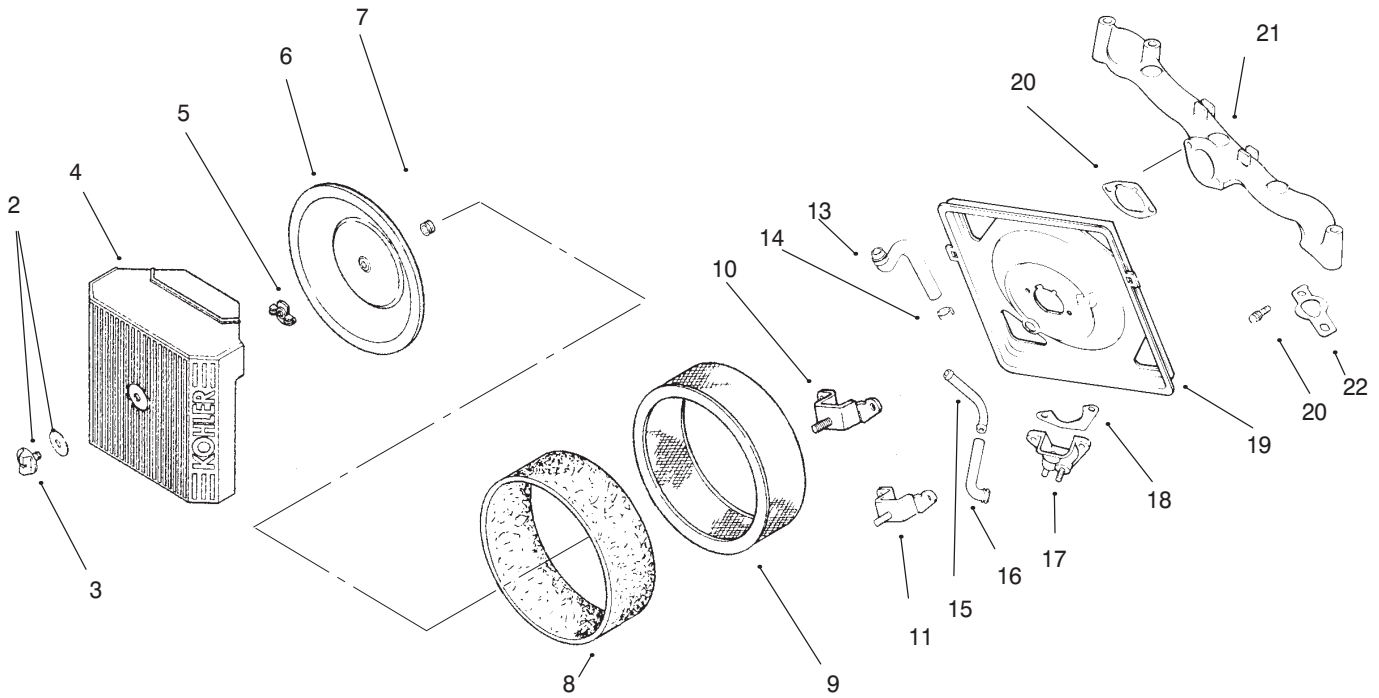
Sheet No.:9

Engine Control-Kohler #CV22S-67530

Ref. No.	Part No.	Qty.	Description
1	SM-0642025	1	Screw-Hex. Flange
2	24 090 14	1	Lever-Governor
3	M-0641060	1	Nut-Hex. Flange
4	24 089 01	1	Spring-Linkage
5	25 158 08	1	Bushing-Linkage Retaining
6	24 079 04	1	Linkage-Throttle
7	25 158 11	1	Bushing-Throttle Linkage
8	24 126 13	1	Bracket-Control
9	24 089 03	1	Spring-Choke Return
10	M-0547050	1	Nut-Hex.
11	M-0545016	1	Screw-Hex. Flange
12	M-0446030	1	Nut-Hex.
13	M-0645016	4	Screw-Hex. Flange
14	12 237 01	2	Clamp-Cable
15	M-0545016	2	Screw-Hex. Flange
16	24 090 07	1	Lever-Throttle Actuator
17	24 468 01	3	Washer-Spring
18	24 090 03	1	Lever-Throttle Control
19	24 090 05	1	Lever-Choke
20	24 079 05	1	Linkage-Choke
21	M-0545020	1	Screw-Hex. Flange
22	41 468 03	1	Washer-Spring

Ref. No.	Part No.	Qty.	Description
23	M-0403025	1	Screw-Hex.
24	24 089 15	1	Spring-Governor

Obtain parts from your local Kohler dealer



Sheet No.:10

Air Intake / Filtration-Kohler #CV22S-67530

Ref. No.	Part No.	Qty.	Description
*1	24 743 05	1	Kit-Air Cleaner Cover (Incl. Ref.# 2-4,10-11)
2	24 755 91	1	Kit-Knob w/Gasket (Incl. Ref.# 3)
3	25 341 02	1	Knob-Cover
4	24 096 24	1	Cover-Air Cleaner
5	12 100 01	1	Nut-Wing
6	24 096 01	1	Cover-Inner Air Cleaner
7	24 032 03	1	Seal-Air Intake
8	24 083 02	1	Element-Precleaner
9	47 083 03	1	Element-Air Cleaner
10	24 126 21	1	Bracket-Air Cleaner Base
11	24 126 43	1	Bracket-Air Cleaner
*12	24 755 86	1	Kit-Air Cleaner Base (Incl. Ref.# 13-20)
13	24 326 14	1	Hose-Breather
14	X-426-9	2	Clamp-Hose
15	24 294 06	1	Fitting
16	24 326 13	1	Hose-Breather
17	24 109 06	1	Cup-Fuel Spitback
18	24 041 13	1	Gasket-Fuel Spitback
19	24 094 14	1	Base-Air Cleaner
20	24 041 14	1	Gasket-Air Cleaner Base

Ref. No.	Part No.	Qty.	Description
21	24 164 06	1	Manifold-Intake
22	24 041 01	2	Gasket-Intake Manifold
23	M-0651055	4	Screw-Hex. Flange

*Not Illustrated

Obtain parts from your local Kohler dealer

Toro Part Number Index

Part No.	Page No.	Ref. No.	Qty.	Description
5108	11	1	2	Valve-Tire Tubeless
5108	11	13	2	Valve-Tire Tubeless
6331	10	21	1	Spacer-Clutch Arm
6392	4	2	5	Master Link
10204	11	12	2	Spacer-Frt Wheel Inner
10205	11	9	4	Bearing Ball
100305	10	17	2	Washer-Friction
100307	4	11:9	1	E-Ring
100365	10	18	2	Washer-Spring Disc
101884	7	9:	1	Nut-Hex
102950	7	12:2	1	Washer-Tab
105805	7	12:1	1	Nut-Hex Special F/W
106931	5	41:1	2	Gasket
106948	7	21	1	Tray-Battery
107675	2	12	2	Washer-Rbr
108881	10	8	2	Nut-Hex
109553	7	19	1	Boot-Battery Cable
110352	5	41	2	ASM-Cap
111216	7	9	1	Switch-Key
111879	5	13	1	Fitting-Fuel
111891	2	15	1	Floor Pam ASM
111909	2	2	1	Bracket-Fender Rear RH
111910	2	19	1	Bracket-Fender Rear LH
111911	2	21	1	Bracket-Fender Frt RH
111912	2	20	1	Bracket-Fender Frt LH
112941	4	12	1	Nut-HH
112954	4	11:5	1	Pedal-Foot
112955	4	11:4	1	Link-Pivot
112956	4	11:3	1	Pawl-Lift Arm
112957	4	11:1	1	ASM Lever Arm & Spkt
112958	4	11:2	1	Spkt-Hgt Cont w/Bush
113010	7	27	1	Hold Down
113050	7	10	1	Cover-Switch
113081	4	13	1	Spring-Ext
113149	4	11:10	1	Pin - Pedal Pivot
113179	7	12:3	1	Nut-Hex (Facenut) F/W
113632	12	12	4	Spring-Compression
113665	10	9	1	Spacer-Parking Brake
113675	12	17	2	Bushing-Str Lever Pivot
113684	4	5	1	ASM-Sprocket
113687	4	3	4	Bearing-Flanged
113697	4	6	2	Eye Bolt
113699	4	1	2	Deck Lift Chain
114183	4	14	1	Foot Spring-Long
114574	3	39	1	Decal-Choke
114613	4	11:8	1	Pin-Lock
115024	4	11	1	ASM-Deck Hgt Control
115200	10	1	1	Trim-Edge
115226	1	13	2	Plug-Square
115295	12	18	2	Bushing
115850	2	26	1	Cable-Seat
115855	4	7	1	Chain-Foot Pedal Drive
115877	7	25	1	Battery
116237	7	5	1	Switch
116397	7	3	4	Relay
116460	12	21	2	Bolt
116478	10	6	1	Brake-Parking
116839	2	25	2	Bumper
116973	11	3	2	Tire
684368	7	15	2	Switch ASM
9103312	5	50	4	Screw
9107964	7	4	2	Screw

*Not Illustrated

Toro Part Number Index (cont.)

Part No.	Page No.	Ref. No.	Qty.	Description
9155854	2	10	2	Nut-Wing
9201604	7	9:	1	Washer-Lock
9202254	4	4	2	Washer-Special
9202424	7	11	1	Washer-Fit
9202594	12	5	8	Washer
7-0238	5	21	1	Key-Square
10-6850	10	38	2	Drum Brake
Pi74160	12	35	1	Packaging Instructions
24-0760	5	7	1	Exchanger-Heat
26-3790	10	37	2	Nut-Lock
27-6231	5	35	1	Bolt-Wheel
47-2987	5	20	1	Hose-Gas
56-7971	8	8	2	Clamp-Tube
62-7770	7	14	2	Key-Ignition
62-9130	10	12	2	Grip - Handle
63-2650	12	7	4	Screw-Shoulder
66-6840	1	23	1	Decal-Hot Surface
67-8110	9	41	1	Filter-Oil
69-0760	2	30:11	1	Bracket-Arm LH
69-0770	2	30:10	1	Bracket-Arm RH
69-1180	3	30:7	2	Armrest-Black
70-9840	11	8	4	Brake Shoe
70-9850	11	7	2	Clip-Retainer
70-9860	11	5	2	Cam Shaft
70-9870	11	6	2	Plate-Backing
70-9880	11	4	4	Spring-Return
71-1500	10	34	2	Brake ASM
74-0720	2	18	1	Tube-Manual
76-0800	9	47	1	Kit-Seal, Hyd. Mtr.
78-0020	7	36	1	Hourmeter
78-3270	5	40	2	Fuel Tank ASM
78-3320	7	36:1	1	Clamp-Hour Meter
79-0560	12	19	2	Strap-Pivot
79-2710	2	16	1	Panel-Front
79-4800	10	16	1	Handle
80-6090	5	25	2	Key-Square
82-3790	8	27	2	Arm-Control
82-4380	5	23	2	Pulley-Pump
82-8220	8	29	2	Pump-Hydraulic
83-3560	11	10	2	Tire
83-9340	10	32	2	Shield-Grass Brake
84-2000	10	31	2	Bracket-Brake
85-4730	2	6:4	1	Decal - Hyd Oil Only
85-6540	10	39	8	Drive Type Stud
86-9080	9	43	1	Head-Filter
88-1880	5	43	1	Spring-Compression
88-7450	8	24	2	Spacer
92-1715	1	10	4	Spacer
92-1715	10	29	8	Spacer
92-6282	2	30:4	1	Seat-Switch
92-6533	2	30:2	1	Kit-Replacement Cushion
92-6534	2	30:1	1	Shell-Seat
92-6780	5	46	4	Nut-HHF
92-6877	5	14	1	Valve-Oil Drain
92-7301	2	30:14	2	Spacer
92-7318	2	30:15	2	Screw-Phillips Flat Hd
92-9811	7	12	1	Switch-Toggle
93-0350	6	52	2	Gasket-Exhaust
93-5107	5	6	2	Fitting-Adapter
93-6838	10	36	2	Hub-Wheel
94-6101	1	22	1	Frame ASM
94-6115	1	17	1	Bracket-Motor

*Not Illustrated

Toro Part Number Index (cont.)

Part No.	Page No.	Ref. No.	Qty.	Description
94-6116	11	2	2	Wheel-Rear
94-6117	1	24	1	Seat Frame ASM
94-6124	11	11	2	Wheel-Front
94-6125	1	14	2	Wheel And Tire ASM
94-6126	1	1	2	Wheel And Tire ASM
94-6127	2	29	1	Seat Plate ASM
94-6133	8	5	1	Reservoir-Oil
94-6134	5	22	1	Pulley-Engine
94-6135	5	30	1	Stop-Clutch
94-6136	5	26	1	Clutch-Elec
94-6138	5	38	1	Lever-Idler
94-6140	5	24	1	V-Belt
94-6141	5	11	1	Bracket-Cooler
94-6142	5	1	1	Bracket-Cooler
94-6146	7	24	2	Retainer-Battery
94-6148	2	24	2	Spacer-Seat
94-6149	8	18	1	Tube ASM-Right
94-6150	8	20	4	Fitting-Hydraulic
94-6151	8	25	2	Arm-Follower
94-6152	8	37	1	Tube ASM-Left
94-6153	8	17	1	Tube ASM-Right
94-6154	10	5	1	ASM-Control
94-6155	8	38	1	Tube ASM-Left
94-6156	9	44	1	Motor-Hydraulic Wheel
94-6157	8	35	1	Motor-Hydraulic Wheel
94-6159	8	12	1	Screen-Filler
94-6160	8	11	1	Oil Cap ASM
94-6163	10	24	1	Rod-Brake
94-6164	10	23	1	Rod-Brake
94-6166	10	4	1	Brake Handle ASM
94-6167	5	17	1	Control-Choke
94-6168	7	29	1	Wire-Battery
94-6169	12	1	1	Bracket-Neutral
94-6170	12	28	1	Bracket-Neutral
94-6171	12	4	2	Lever-Neutral
94-6172	12	6	2	Lever-Neutral
94-6174	12	11	1	Steering Arm ASM
94-6175	12	29	1	Steering Arm ASM
94-6177	12	9	2	Bolt-Shoulder
94-6178	12	26	2	Rod-Control
94-6182	10	30	2	Brake Lever ASM
94-6184	7	17	2	Plate-Mount
94-6199	5	4	1	Cooler Shroud ASM
94-6203	7	32	1	Harness-Main
94-6204	7	31	1	Wire-Battery
94-6205	5	39	1	Hose-Gas
94-6207	10	26	2	Spring-Compression
94-6210	5	45	1	Muffler-Engine
94-6211	5	49	1	Shield-Heat
94-6212	12	8	2	Spring-Extension
94-6219	5	47	1	Shield-Heat
94-6226	10	25	2	Clevis-Brake
94-6230	5	31	1	Spring-Extension
94-6232	2	34	2	Decal-Z222
94-6233	2	33	1	Decal-Guage
94-6234	2	31	1	Decal-Danger
94-6235	2	38	1	Decal-Danger
94-6236	5	33	1	Pulley-Idler
94-6241	1	8	2	Castor ASM
94-6242	1	7	2	Spacer
94-6243	9	40	1	Hose ASM-Hyd
94-6244	8	1	1	Hose ASM-Hyd

*Not Illustrated

Toro Part Number Index (cont.)

Part No.	Page No.	Ref. No.	Qty.	Description
94-6245	8	26	1	Hose ASM-Hyd
94-6246	8	4	1	Hose ASM-Hyd
94-6247	8	6	1	Hose ASM-Hyd
94-6248	8	21	1	Hose ASM-Hyd
94-6249	8	7	1	Hose ASM-Hyd
94-6251	8	15	2	Hose ASM-Hyd
94-6253	12	16	1	RH Lever ASM
94-6254	12	27	1	LH Lever ASM
94-6255	12	15	2	Grip-Cushion
94-6262	10	22	1	Bracket-Control
94-6263	2	6	1	ASM-Fender
94-6266	2	22	1	ASM-Fender
94-6279	5	12	1	Hose-Gas
94-6286	2	30	1	ASM-Seat
237-21	9	39:2	2	O-Ring
237-22	8	16:1	3	O-Ring #6
237-22	8	22:1	4	O-Ring #6
237-22	8	31:1	2	O-Ring #6
237-30	8	2:1	2	O-Ring #8
237-30	8	3:2	2	O-Ring #8
237-30	9	42:1	1	O-Ring #8
237-42	8	22:2	2	O-Ring #6
237-42	8	39:1	2	O-Ring #6
237-65	8	19:1	4	O-Ring
237-78	8	31:2	2	O-Ring
237-79	8	2:2	2	O-Ring
237-79	8	3:1	1	O-Ring
237-79	9	42:2	1	O-Ring
237-80	8	19:2	4	O-Ring
241-119	1	2	2	Dust Cap
242-50	1	20	8	Nut-Lug
2411-33	12	24	4	Ball Joint
2412-10	5	18	2	R-Clamp
2412-39	5	3	4	R-Clamp
2412-39	7	34	3	R-Clamp
2412-58	10	15	1	Clamp
2412-98	5	34	6	Clamp-Hose
2412-120	2	23	2	Clamp-"R"
251-259	8	23	2	Bearing-Ball
253-129	1	6	2	Seal-Oil
254-72	1	27	4	Bearing-Taper
254-94	1	5	4	Cone-Bearing
256-155	5	37	2	Bushing-Flange
283-1	10	28	2	Pin-Clevis
289-42	5	16	1	Nipple-Pipe
2810-7	5	15	1	Coupling-Pipe
302-5	1	15	2	Fitting-Grease
302-5	11	14	2	Fitting-Grease
302-5	12	22	2	Fitting-Grease
321-2	10	13	2	Screw-HH
321-3	2	3	10	Screw-HH
321-3	2	30:5	2	Screw-HH
321-3	9	46	2	Screw-HH
321-4	7	22	2	Screw-HH
321-5	7	16	2	Screw-HH
321-5	10	35	8	Screw-HH
321-39	5	8	2	Screw-HH
322-2	8	14	4	Screw-HH
322-3	2	5	7	Screw-HH
322-3	5	2	6	Screw-HH
322-3	7	13	1	Screw-HH
322-3	12	20	2	Screw-HH

*Not Illustrated

Toro Part Number Index (cont.)

Part No.	Page No.	Ref. No.	Qty.	Description
322-5	1	26	2	Screw-HH
322-5	4	10	2	Screw-HH
322-5	8	33	4	Screw-HH
322-7	7	35	2	Screw-HH
322-7	8	10	5	Screw-HH
322-9	2	27	2	Screw-HH
322-9	4	11:6	2	Screw-HH
322-9	5	29	4	Screw-HH
322-41	2	14	2	Screw-HH
323-4	1	16	6	Screw-HH
323-5	1	21	4	Screw-HH
323-6	10	19	2	Screw-HH
323-6	12	32	4	Screw-HH
323-8	5	36	1	Screw-HH
323-9	3	30:9	2	Screw-HH
324-5	8	30	4	Screw-HH
327-15	1	9	2	Bolt-HH
3212-11	5	28	1	Screw
3217-6	1	25	2	Nut-Hex
3217-6	2	13	4	Nut-Hex
3217-27	7	36:3	2	Nut-HH
3217-30	1	12	2	Nut-HH
3218-5	12	10	4	Nut-Jam
3220-2	12	25	4	Nut-Hex
3220-3	5	19	1	Nut-Hex Jam
3234-4	5	5	4	Screw-HH
3234-14	2	30:12	6	Screw-HHF
3241-5	5	51	4	Set Screw
3253-3	7	20	2	Washer-Lock
3253-3	9	45	2	Washer-Lock
3253-3	10	14	2	Washer-Lock
3253-4	2	28	4	Washer-Lock
3253-4	8	13	4	Washer-Lock
3253-8	1	11	2	Washer-Lk
3253-21	12	31	4	Washer-Lock
3255-25	7	36:2	2	Washer-Lock
3256-2	2	7	7	Washer-Flat
3256-16	10	33	8	Washer-Flat
3256-22	2	4	12	Washer-Flat
3256-22	7	23	2	Washer-Flat
3256-23	4	9	1	Washer-Flat
3256-23	8	9	2	Washer-Flat
3256-23	10	2	4	Washer-Flat
3256-24	2	30:13	2	Washer-Flat
3256-24	10	11	2	Washer-Flat
3256-24	12	2	6	Washer-Flat
3256-25	5	27	1	Washer-Flt
3256-26	12	13	2	Washer-Flt
3256-28	1	4	2	Washer-Flat
3256-68	2	11	4	Washer-Flt
3272-6	10	3	4	Pin-Cotter
3272-19	4	11:11	2	Pin-Cotter
3274-100	8	34	8	Screw-HSH
3290-134	7	1	2	Screw-HH
3290-134	10	20	1	Screw-HH
3290-378	7	6	1	Tie-Cable
3296-2	7	8	4	Nut Lock
3296-2	10	10	1	Nut Lock
3296-4	10	27	2	Nut-Lock
3296-4	12	23	4	Nut-Lock
3296-6	5	42	1	Nut-Lock
3296-15	1	3	2	Nut-HH

*Not Illustrated

Toro Part Number Index (cont.)

Part No.	Page No.	Ref. No.	Qty.	Description
3296-16	7	26	2	Nut-Lock
3296-23	8	36	8	Nut-Lock
3296-23	12	14	2	Nut-Lock
3296-29	2	8	7	Nut-Lock
3296-29	4	8	1	Nut-Lock
3296-29	4	11:7	2	Nut-Lock
3296-29	5	10	10	Nut-Lock
3296-29	7	33	3	Nut-Lock
3296-29	8	28	9	Nut-Lock
3296-29	12	3	6	Nut-Lock
3296-39	1	19	4	Nut-Lock
3296-39	5	32	1	Nut-Lock
3296-39	12	30	2	Nut-Lock
3296-42	2	1	10	Nut-Lock
3296-42	7	18	2	Nut-Lock
3296-42	10	40	8	Nut-Lock
32103-22	7	28	2	Nut-Wing
32105-2	7	2	2	Screw-HH
32121-114	10	7	1	Pin
32128-19	3	30:8	2	Nut-Lock
32128-42	8	32	4	Nut-Hex Flange
32128-43	1	18	6	Nut-Whiz Flg
32144-1	2	17	2	Screw-HH
32144-4	2	9	11	Screw-TAP
32144-4	5	48	4	Screw-TAP
32144-4	7	30	4	Screw-TAP
32148-6	5	9	4	Insert
32149-7	7	7	2	Nut-Keps
3318-723	12	34	1	Parts Catalog
340-1	8	39	2	Fitting-Hyd
340-4	8	2	2	Ftg-Hyd
340-17	8	19	4	Ftg-Hyd 90
340-20	8	16	1	Fitting
340-94	8	22	2	Tee
340-97	8	31	2	Fitting
340-98	9	42	1	Ftg-Hyd 90
340-109	8	3	1	Fitting-Tee
351-78	2	30:3	1	Edging
351-80	3	30:6	1	Edging Clip
505-79	9		A/R	Mobil 424