



Z-Master

Z320 OFZ Traction Unit

Model No. 74180 – 790001 & Up

Parts Catalog

ORDERING REPLACEMENT PARTS

To order replacement parts, please supply: the part number, the quantity, and the description of each part desired.

Contents

Description	Page	Description	Page
Frame & Wheels	1	Crankcase	14
Frame And Wheel Asm	2	Oil Pan / Lubrication	15
Electrical System	3	Head / Valve / Breather	16
Parking Brake	4	Ignition / Electrical	17
Hydraulic System	5	Blower Housing And Baffles	18
Hydraulic System	6	Starter System	19
Seat And Fenders	7	Fuel System	20
Steering Controls	8	Engine Controls	21
Heat Shields And Exhaust	9	Air Intake / Filtration	22
Drive Systems	10	Exhaust	23
Electric Schematic	11	Gear Box Assembly No. 94-4641	24
Hydraulic Schematic	12	Hydraulic Pump Assembly No. 98-1957	25
Crankshaft	13		

Part Description Abbreviations

Part descriptions in this catalog may include the following abbreviations.

Abbreviation	Meaning	Abbreviation	Meaning
AR	as required	HWHTF	hex washer head thread forming
ASM	assembly	INC	incorporated
CARR	carriage	LH	left hand
DEG	degrees	PH	pan head
FH	flat head	PPH	Phillips pan head
GA	gauge	PTO	power take off
HF	hex flange	RH	right hand
HFW	hex flange washer	SFH	slotted fillister head
HH	hex head	SH	square head
HHF	hex head flange	SHWH	slotted hex washer head
HHST	hex head self tapping	SPH	slotted pan head
HJ	hex jam	STD	standard
HOC	height-of-cut	TAP	self tapping
HS	hex socket	TH	truss head
HSBH	hex socket button head	TTH	Torx truss head
HSFH	hex socket flat head	WH	wing head
HSH	hex socket head		
HWH	hex washer head		

Important Format Explanations

This catalog uses special formats to convey information in illustrations and parts lists. Specifically, one format is used in conjunction with service assemblies and another with quantities associated with reference numbers.

Service Assemblies

Parts within service assemblies have reference numbers in the form $X:Y$. X is the reference number of the service assembly and Y is a sequential number unique to each part within the service assembly.

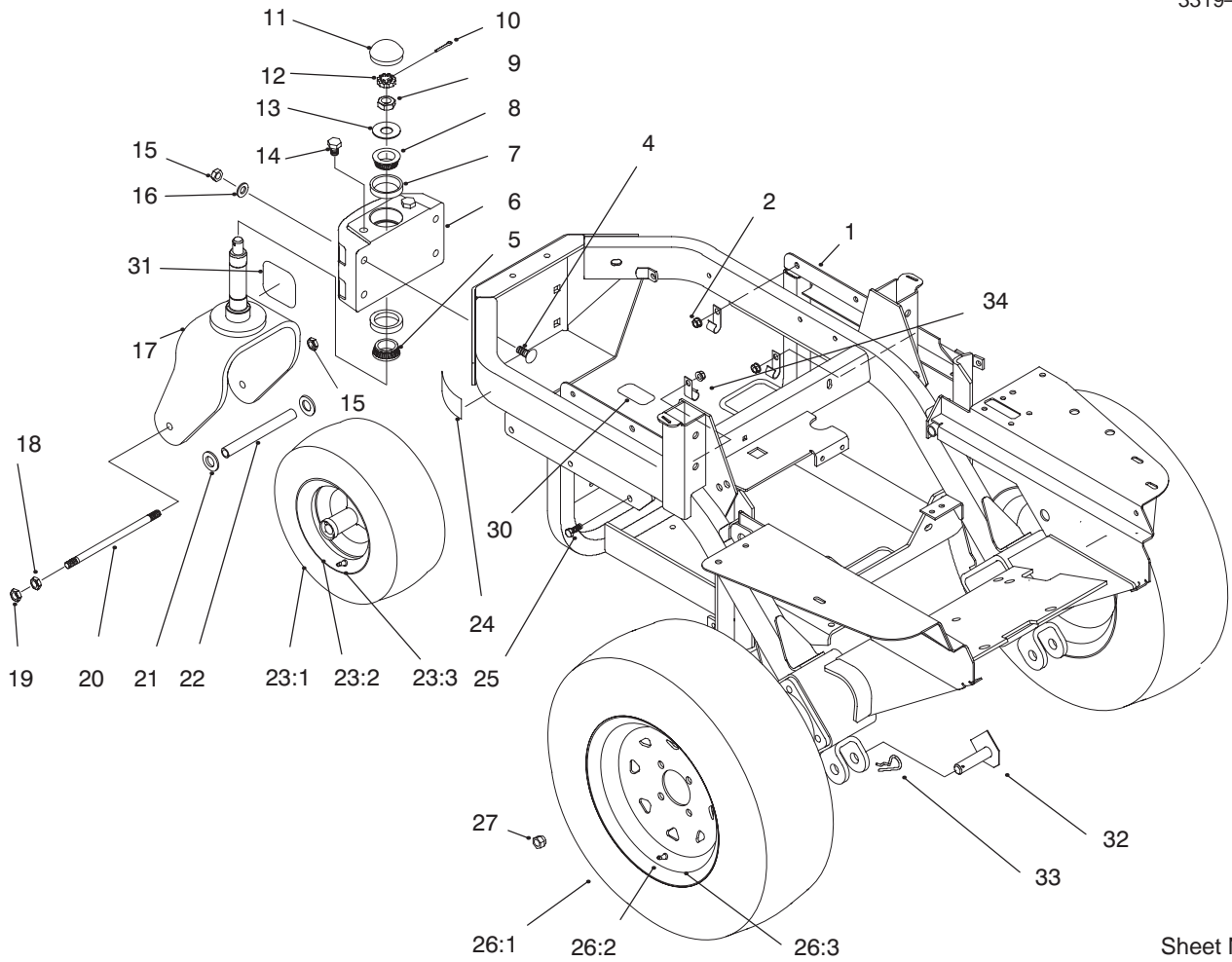
For example, a wheel assembly might be identified by reference number 6, the tire by 6:1, the valve by 6:2, and the wheel by 6:3. When you order the assembly identified by reference number 6, you receive all parts identified by reference numbers 6:1, 6:2, and 6:3. However, you may also order any part individually.

Reference numbers of this type appear in part lists and as callouts in illustrations.

Reference Numbers with Quantities

Illustrations may have a quantity in parentheses next to a reference number, in the form $X (Y)$. X is the reference number. Y in parentheses is the quantity of the part identified by the reference number.

For example, the illustration callout 4 (2) indicates that two parts are used in that instance.

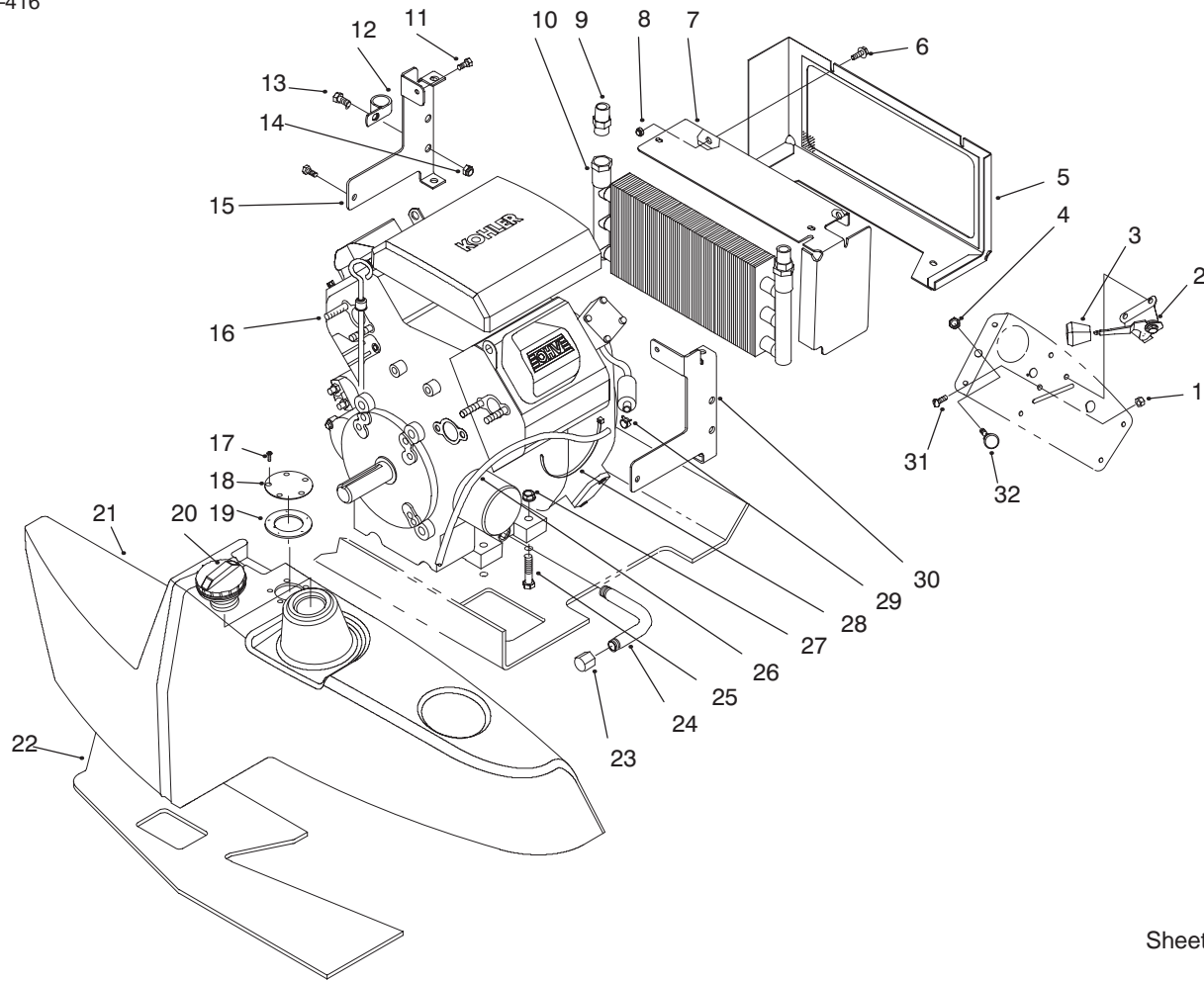


Sheet No.: 2

Frame & Wheels

Ref. No.	Part No.	Qty.	Description
1	94-4618-03	1	Support-Engine
2	3296-39	6	Nut-Lock
3	94-9598	1	Frame ASM
4	3233-27	4	Screw-CARR
5	254-70	1	Bearing w/Cone & Seal
6	94-9489-01	1	Housing-Spindle
7	254-61	2	Cup-Bearing
8	254-62	1	Cone-Bearing
9	3220-7	1	Nut-Jam
10	3272-17	1	Pin-Cotter
11	94-4665	1	Dustcap
12	93-0307	1	Nut-Lock
13	3256-8	1	Washer-Flat
14	325-2	2	Screw
15	3296-23	5	Nut-Lock
16	3256-26	4	Washer-Flat
17	94-4647-01	1	Castor Fork
18	3217-9	1	Nut-HH
19	3218-5	1	Nut-Jam
20	94-4752	1	Axle-Castor
21	3256-28	2	Washer-Flat
22	94-4753	1	Tube-Spacer
23:1	94-9384	1	Tire
23:2	94-9383	1	ASM-Wheel
24	93-9198	1	Decal-Warning

Ref. No.	Part No.	Qty.	Description
25	323-6	6	Screw-HH
26:1	94-9387	2	Tire
26:2	232-27	2	Valve Stem & Cap Assembly
26:3	94-9386	2	Wheel
27	242-50	8	Nut-Lug
28	3269-8	2	Rivet
30	77-3100	1	Decal-Warning
31	95-1956	1	Decal-Z320
32	94-4755	2	Pivot Pin ASM
33	3290-343	2	Pin-Cotter
34	8830	1	Retainer-"J"

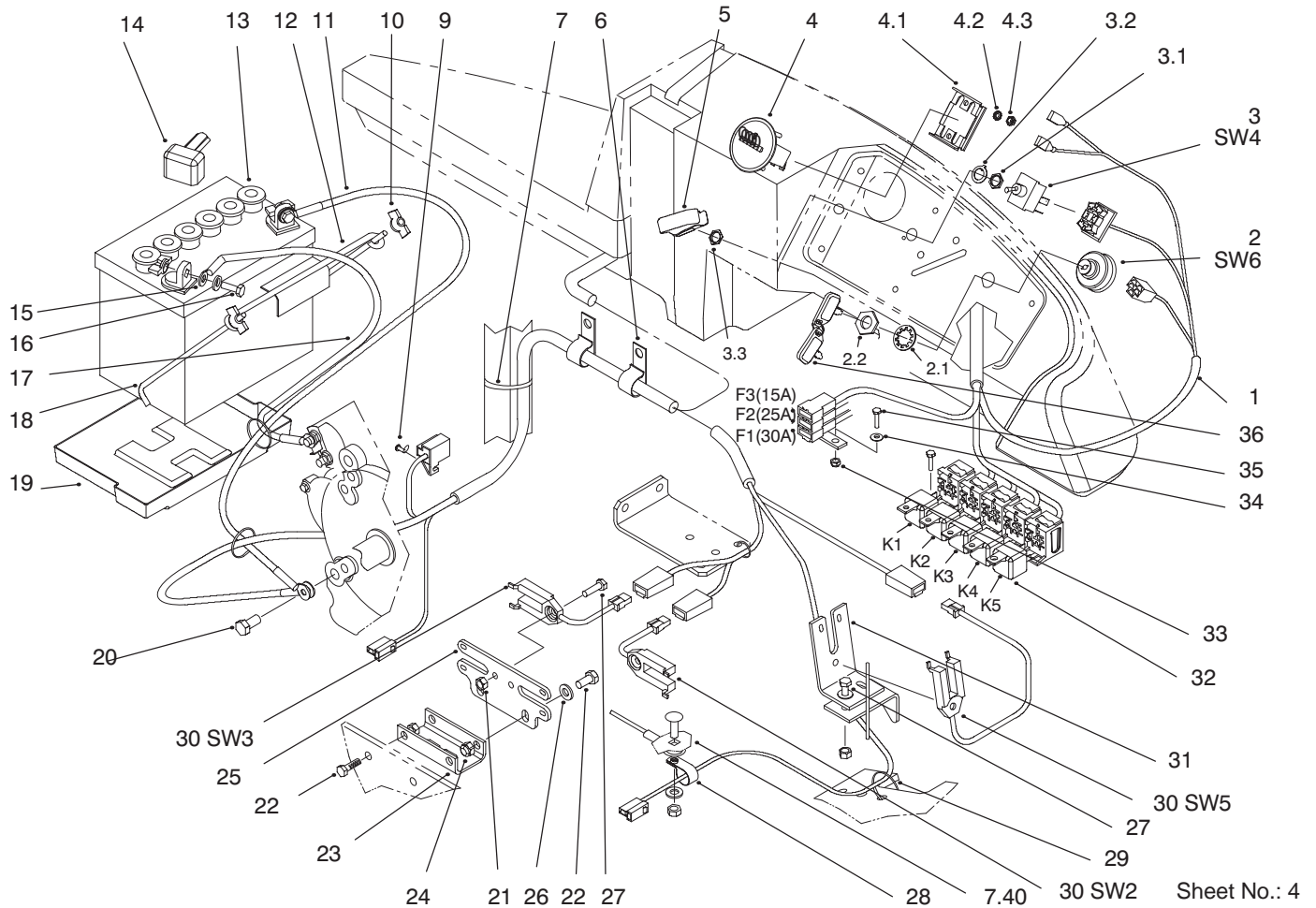


Sheet No.: 3

Frame And Wheel Asm

Ref. No.	Part No.	Qty.	Description
1	3296-42	2	Nut-Lock
2	95-1955	1	Control-Throttle
3	66-0120	1	Knob
4	3220-3	1	Nut-Hex Jam
5	94-9556-03	1	Cooler Shroud ASM
6	3234-4	6	Screw-HH
7	94-9563-03	1	Bracket-Shroud
8	32148-6	6	Insert
9	93-5107	2	Fitting-Adapter
10	24-0760	1	Exchanger-Heat
11	32144-10	2	Screw-HH
12	2412-39	4	R-Clamp
13	322-3	4	Screw-HH
14	3296-29	4	Nut-Lock
15	94-6142	1	Bracket-Cooler
16	94-9461	1	Engine Kohler Ch20
17	3250-29	5	Screw
18	94-9597-03	1	Cover-Fuel Tank
19	62-7650	1	Opening Gasket
20	93-3101	1	Gas Cap
21	94-9553	1	Fuel Tank ASM
22	98-1319	1	Foam-Tank
23	288-4	1	Cap-Pipe
24	94-9499	1	Tube-Oil Drain
25	323-9	4	Screw-HH

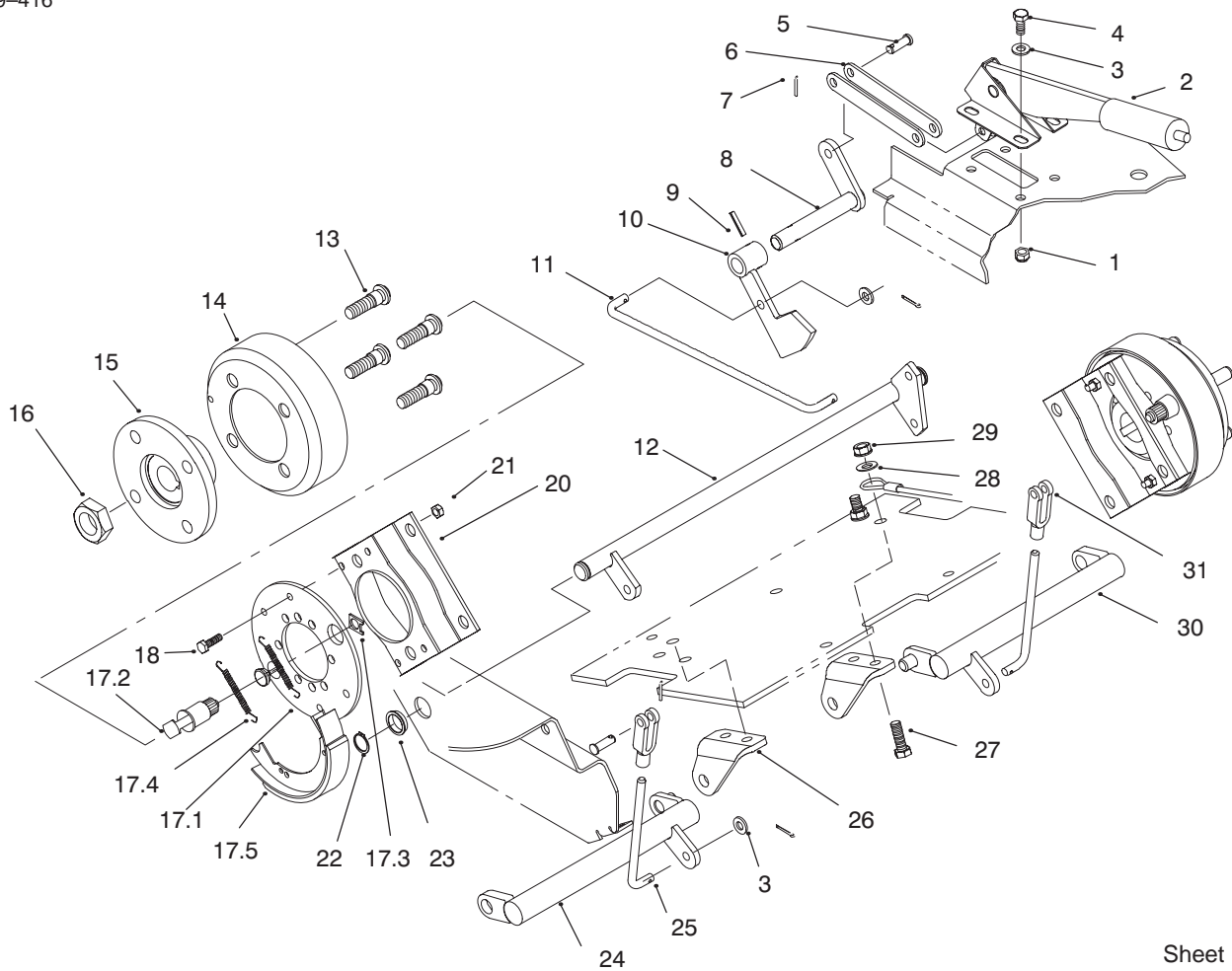
Ref. No.	Part No.	Qty.	Description
26	94-9502	1	Hose-Gas
27	3296-39	4	Nut-Lock
28	3290-378	1	Tie-Cable
29	2412-98	2	Clamp-Hose
30	94-6141-03	1	Bracket-Cooler
31	3258-166	2	Screw
32	98-1956	1	Control-Push Pull



Electrical System

Ref. No.	Part No.	Qty.	Description
1	94-4680	1	Harness-Main
2	111216	1	Switch-Ignition
2:1	101884	2	Nut-Hex
2:2	9201604	1	Washer-Lock
3	92-9811	1	Switch-Toggle
3:1	105805	1	Nut
3:2	102950	1	Washer
3:3	113179	1	Nut
4	78-0020	1	Hourmeter
4:1	78-3320	1	Clamp-Hour Meter
4:2	3255-25	2	Washer-Lock
4:3	3217-27	2	Nut-HH
5	113050	1	Cover-Switch
6	94-9580	2	Clamp-J
7	3290-379	1	Tie-Cable
9	32144-74	2	Screw
10	32103-22	4	Nut-Wing
11	92-6287	1	ASM-Wire (Ground)
12	113010	1	Hold Down
13	115877	1	Battery
14	28-8080	1	Boot-Terminal
15	3256-22	4	Washer-Flat
16	321-4	2	Screw-HH
17	28-3893	1	ASM-Wire
18	94-6146	2	Retainer-Battery
19	106948	1	Tray-Battery

Ref. No.	Part No.	Qty.	Description
20	323-4	1	Screw-HH
21	3296-42	5	Nut-Lock
22	322-3	4	Screw-HH
23	94-4797-03	1	Channel-Mount Switch
24	3296-29	4	Nut-Lock
25	94-9460	1	Plate-Switch Mount
26	3256-23	2	Washer-Flat
27	321-5	5	Screw-HH
28	2412-93	1	R-Clamp
29	3290-378	5	Tie-Cable
30	98-1324	3	Switch-Interrupter
31	94-4696	1	Angle-Mount
32	116397	5	Relay
33	3296-2	3	Nut Lock
34	3256-14	3	Washer-Flat
35	32105-13	3	Screw-HH
36	62-7770	2	Key-Ignition

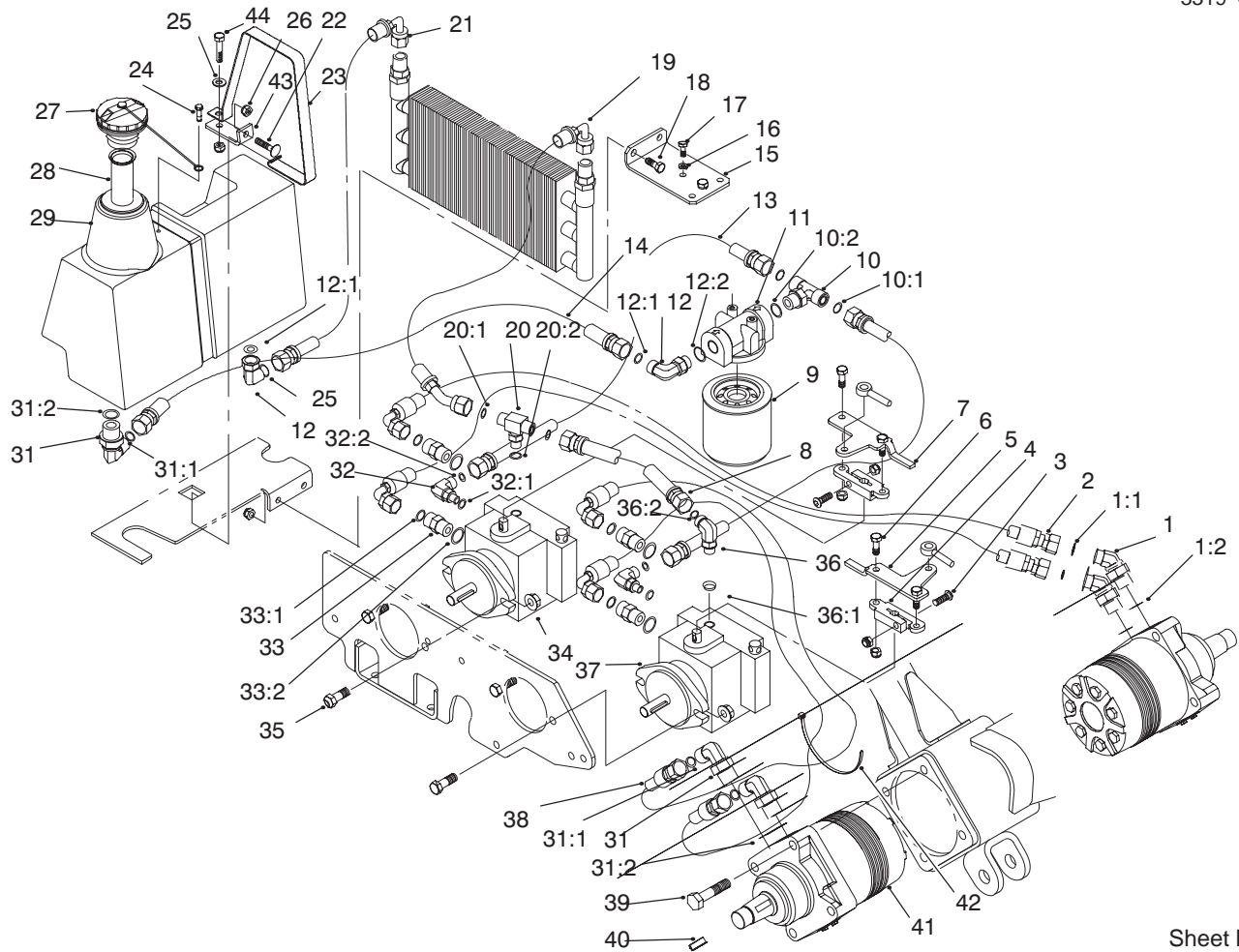


Sheet No.: 5

Parking Brake

Ref. No.	Part No.	Qty.	Description
1	3296-29	4	Nut-Lock
2	94-4602	1	Lever-Brake
3	3256-23	8	Washer-Flat
4	322-3	4	Screw-HH
5	283-1	4	Pin-Clevis
6	94-9451	2	Link-Brake
7	3272-10	8	Pin-Cotter
8	94-9456	1	Transfer Shaft
9	32121-93	1	Pin-Spiral
10	94-9452	1	Brake Hub
11	94-9450	1	Rod-Brake
12	94-4624	1	Torsion Shaft
13	85-6540	8	Stud
14	10-6850	2	Drum Brake
15	10-6870	2	Hub-Wheel
16	26-3790	2	Nut-Lock
17	71-1500	2	Brake ASM
17:1	70-9870	2	Plate-Backing
17:2	70-9860	2	Cam Shaft
17:4	70-9880	4	Spring-Return
17:5	70-9840	4	Brake Shoe
18	321-5	8	Screw-HH
20	84-2000	2	Bracket-Brake
21	3296-42	8	Nut-Lock
22	32120-72	2	Ring-Retaining
23	106950	2	Bushing

Ref. No.	Part No.	Qty.	Description
24	94-9392	1	Brake Lever RH
25	94-9398	2	Rod-Link
26	94-9573-01	2	Mount-Lever
27	323-18	4	Screw-HH
28	3256-24	1	Washer-Flat
29	3296-39	4	Nut-Lock
30	94-9391	1	Brake Lever LH
31	282-2	2	Pin-Clevis

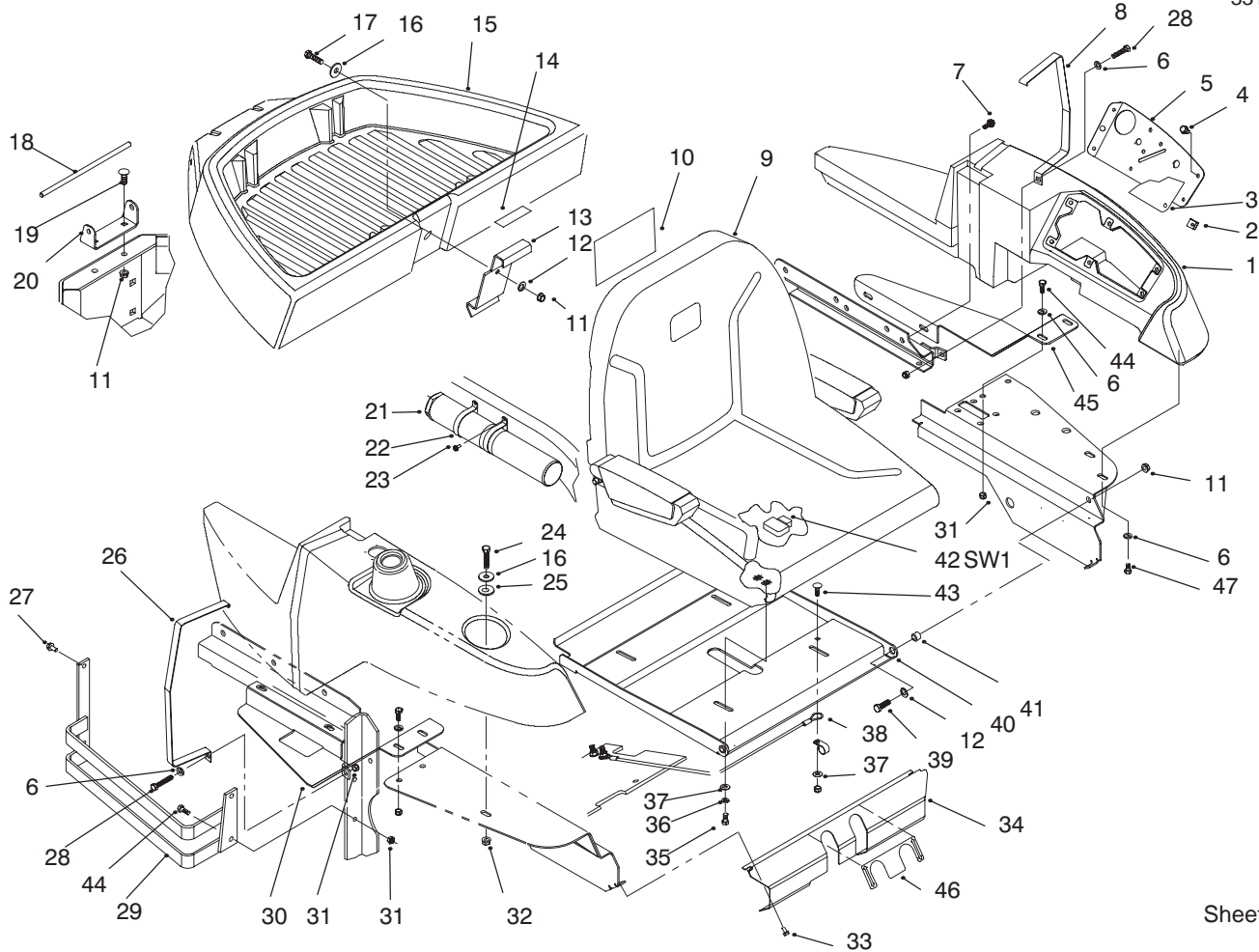


Sheet No.: 6

Hydraulic System

Ref. No.	Part No.	Qty.	Description
1	340-89	2	Fitting-Hydraulic
1:1	237-30	2	O-Ring
1:2	237-80	2	O-Ring
2	94-4714	2	Hose ASM-Hyd
3	3274-83	2	Screw-HSH
4	94-4678	2	Arm-Pump Control
5	94-4702-03	1	Plate-Control
6	322-5	4	Screw-HH
7	94-4701-03	1	Plate-Control
8	94-4712	1	Hose ASM-Hyd
9	67-8110	1	Filter-Oil
10	340-157	1	Fitting-Hydraulic
10:1	237-30	1	O-Ring
10:2	237-79	1	O-Ring
11	86-9080	1	Head-Filter
12	340-98	2	Fitting-Hydraulic
12:1	237-30	2	O-Ring
12:2	237-79	2	O-Ring
13	94-4711	2	Hose ASM-Hyd
14	94-4710	1	Hose ASM-Hyd
15	94-9525-03	1	Angle-Mount
16	3253-3	2	Washer-Lock
17	321-3	2	Screw-HH
18	322-4	2	Screw-HH
19	94-4713	1	Hose ASM-Hyd
20	340-94	1	Tee

Ref. No.	Part No.	Qty.	Description
20:1	237-22	2	O-Ring
20:2	237-42	1	O-Ring
21	94-4709	1	Hose ASM-Hyd
22	3230-1	1	Bolt-CARR
23	94-4642-03	1	Strap-Hydraulic Tank
24	57-5420	1	Screw-Shoulder
25	3256-23	1	Washer-Flat
26	3296-29	10	Nut-Lock
27	93-4365	1	Oil Cap
28	92-1705	1	Screen-Filter
29	94-4700	1	Tank-Hydraulic
31	340-105	3	Fitting-Elbow
31:1	237-30	3	O-Ring
31:2	237-80	3	O-Ring
32	340-97	2	Fitting-Hydraulic
32:1	237-22	2	O-Ring
32:2	237-78	2	O-Ring
33	340-4	4	Fitting-Hydraulic
33:1	237-30	4	O-Ring
33:2	237-79	4	O-Ring
34	32128-42	4	Nut-Hex Flange
35	324-5	4	Screw-HH
36	340-77	1	Fitting-Hydraulic
36:1	237-22	1	O-Ring
36:2	237-42	1	O-Ring
37	98-1957	2	Pump-Hydraulic

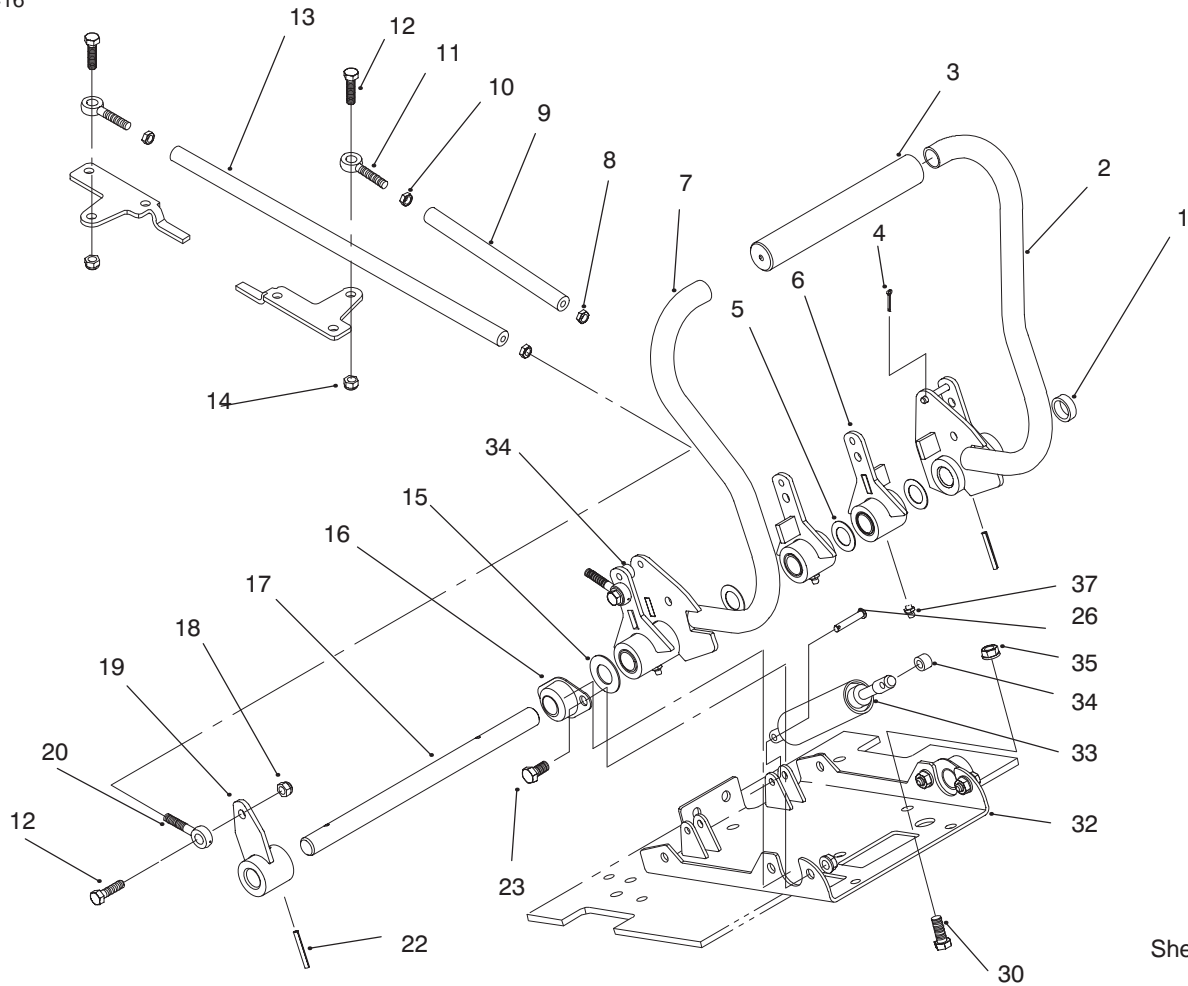


Sheet No.: 7

Seat And Fenders

Ref. No.	Part No.	Qty.	Description
1	94-4698	1	Console
2	95-1962	6	Tinnerman Clip
3	98-0753	1	Decal-Instrument
4	32144-124	6	Screw-PPH
5	94-9350-03	1	Panel-Instrument
6	3256-23	8	Washer-Flat
7	32144-11	4	Screw-TAP
8	94-9488-03	1	Strap-Console
9	94-9567	1	ASM-Seat
10	93-7340	1	Decal-Toro
11	3296-39	5	Nut-Lock
12	3256-24	3	Washer-Flat
13	94-4672-03	1	Latch-Utility Box
14	98-1306	1	Decal-No Riders
15	94-4699	1	Box-Utility
16	63-8410	2	Washer-Flat
17	323-8	1	Screw-HH
18	94-9496	1	Pin-Pivot
19	3231-2	2	Screw-CARR
20	94-4721-03	1	Hinge-Utility Box
21	74-0720	1	Tube-Manual
22	2412-120	2	Clamp-R
23	32104-76	2	Screw-Self TAP
24	323-9	1	Screw-HH
25	240-11	1	Grommet
26	94-4799-03	1	Strap-Fuel Tank

Ref. No.	Part No.	Qty.	Description
27	32144-14	2	Screw-HWH
28	322-10	2	Screw-HH
29	98-1953-03	1	Bumper ASM
30	94-4798-01	1	Plate-Tank Support
31	3296-29	9	Nut-Lock
32	3290-357	1	Nut-Lock Flange
33	32144-4	4	Screw-TAP
34	94-9491-01	1	Plate-Cover
35	322-3	4	Screw-HH
36	3253-4	4	Washer-Lock
37	3256-2	5	Washer-Flat
38	115850	1	Cable-Seat
39	323-7	2	Screw-HH
40	94-9529-01	1	Plate-Seat
41	52-2480	2	Spacer-Wheel
42	38-1420	1	Switch-Seat
43	3230-2	1	Screw-CARR
44	322-4	6	Screw-HH
45	94-4635-01	1	Plate-Console Support
46	98-1313	1	Decal-Operation
47	322-2	2	Screw-HH

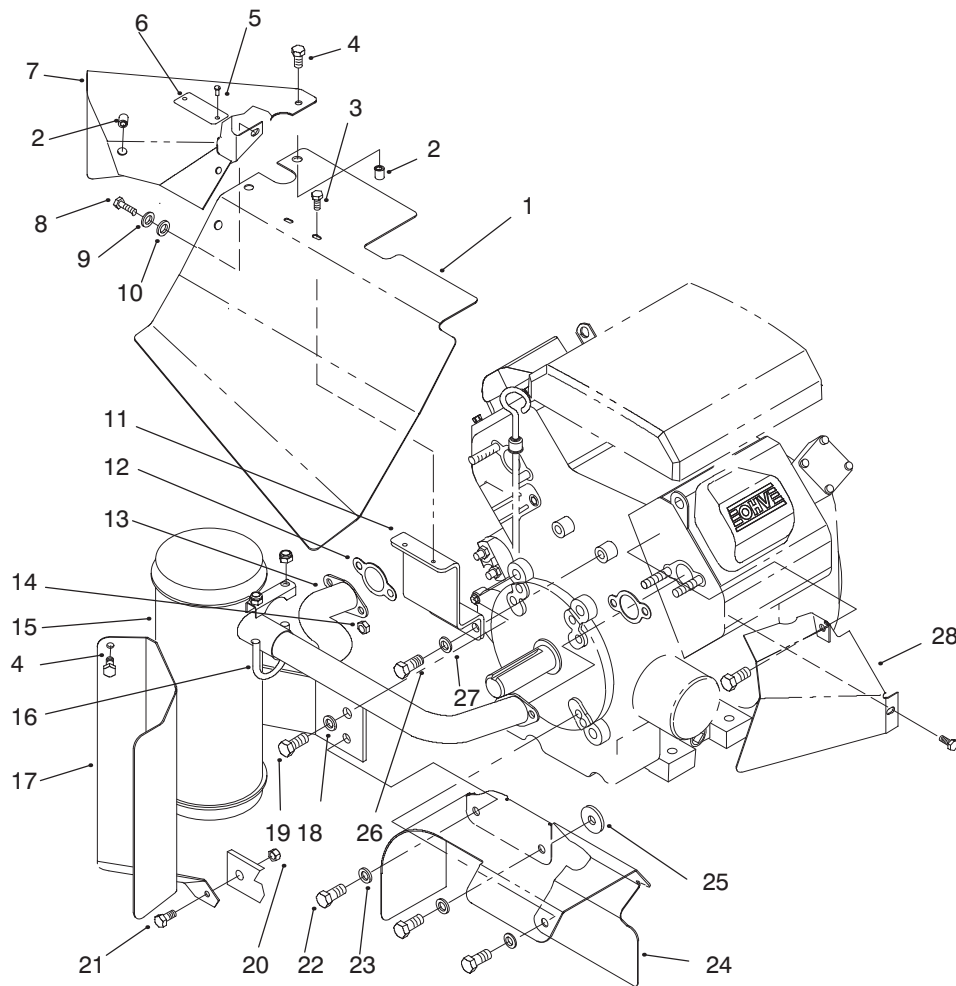


Sheet No.: 8

Steering Controls

Ref. No.	Part No.	Qty.	Description
1	94-9524	1	Spacer-Control
2	94-9517-03	1	Handle-Control LH
3	94-9490	2	Grip-Cushion
4	3272-4	4	Pin-Cotter
5	9202574	3	Washer-Flt
6	94-9552	2	Center Control ASM
7	94-9551	1	Handle-Control RH
8	3220-20	2	Nut-Hex Jam
9	94-4717	1	Rod-Control
10	3220-2	2	Nut-Jam
11	2411-52	2	Rod-End RH
12	322-5	4	Screw-HH
13	94-4718	1	Rod-Control
14	3296-29	2	Nut-Lock
15	3256-39	1	Washer-Flat
16	27-2320	2	Bearing
17	94-9515	1	Shaft-Control
18	3296-47	2	Nut-Lock
19	94-9594-03	1	Hub-Control
20	2411-53	2	Rod-End LH
22	32121-103	2	Pin-Spring
23	323-4	4	Screw-HH
26	283-66	4	Pin-Clevis
30	323-6	3	Screw-HH
32	94-9591-03	1	Mount-Channel
33	94-9596	2	Damper-Control

Ref. No.	Part No.	Qty.	Description
34	94-9593	2	Spacer-Damper
35	3296-39	7	Nut-Lock
37	302-5	3	Fitting-Grease

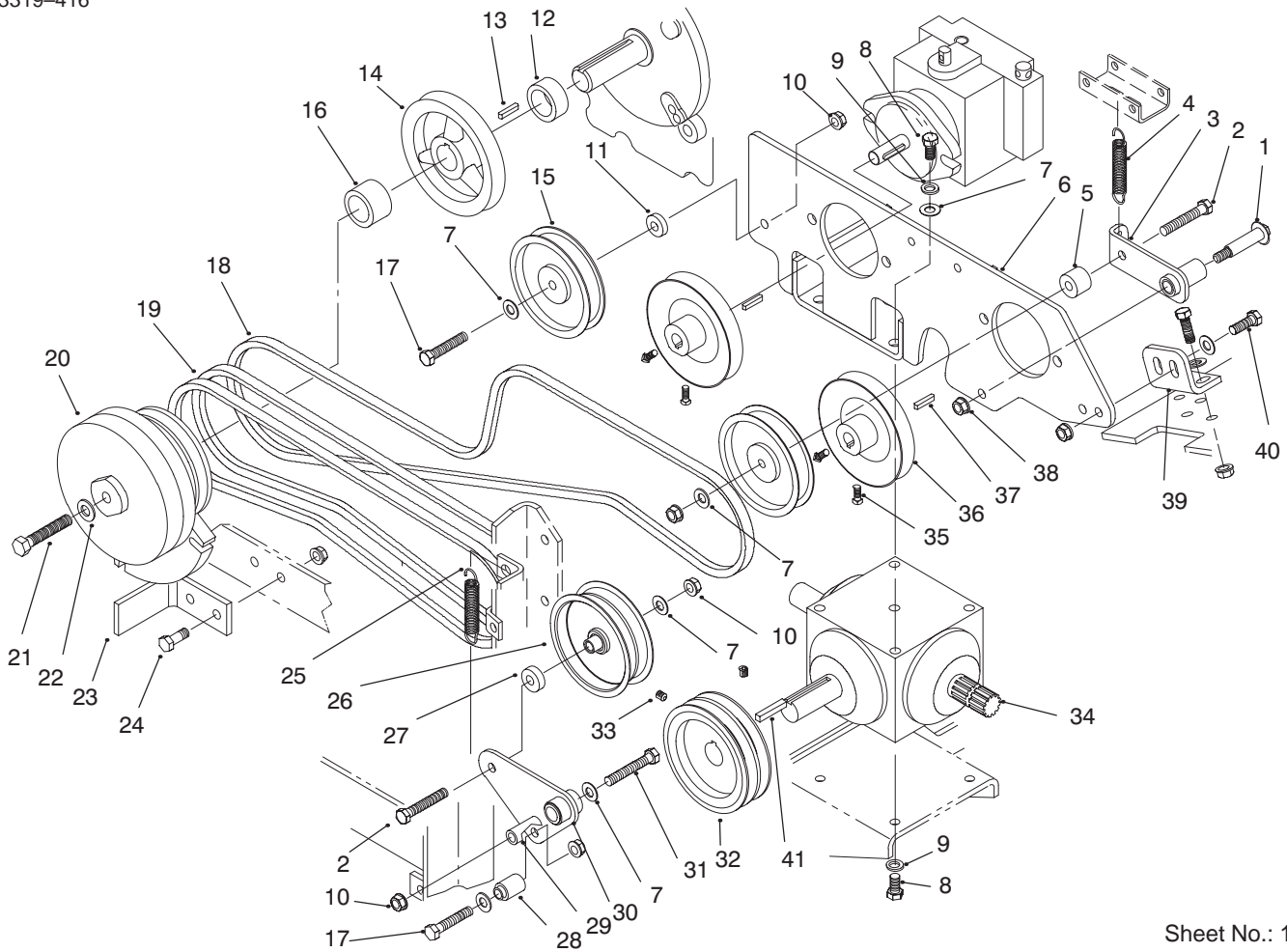


Sheet No.: 9

Heat Shields And Exhaust

Ref. No.	Part No.	Qty.	Description
1	98-1328	1	Baffle-Heat
2	32148-6	4	Insert
3	12-5450	2	Screw-Thd Form
4	3234-4	4	Screw-HH
5	3269-8	2	Rivet
6	80-9350	1	Plate-Hot Surface
7	98-1327	1	Baffle-Heat
8	42-9430	1	Bolt w/Washer
9	48-8020	1	Washer-Spring Lock
10	48-8010	1	Washer-Flat 6.4mm Id
11	94-9561-03	1	Bracket-Manifold Shield
12	93-0350	2	Gasket-Exhaust
13	94-9494	1	Manifold
14	92-6780	4	Nut-HHF
15	94-9495	1	Muffler
16	2112-11	1	Clamp-Muffler
17	98-1329	1	Baffle-Heat
18	3253-6	1	Washer-Lock
19	324-4	1	Screw-HH
20	3296-42	1	Nut-Lock
21	321-4	1	Screw-HH
22	323-5	3	Screw-HH
23	3253-5	3	Washer-Lock
24	98-1326	1	Baffle-Heat
25	2844	1	Washer-Flat

Ref. No.	Part No.	Qty.	Description
26	33114-020	2	Screw-HH
27	48-9570	2	Washer-Lock M8
28	98-1349	1	Baffle-Heat



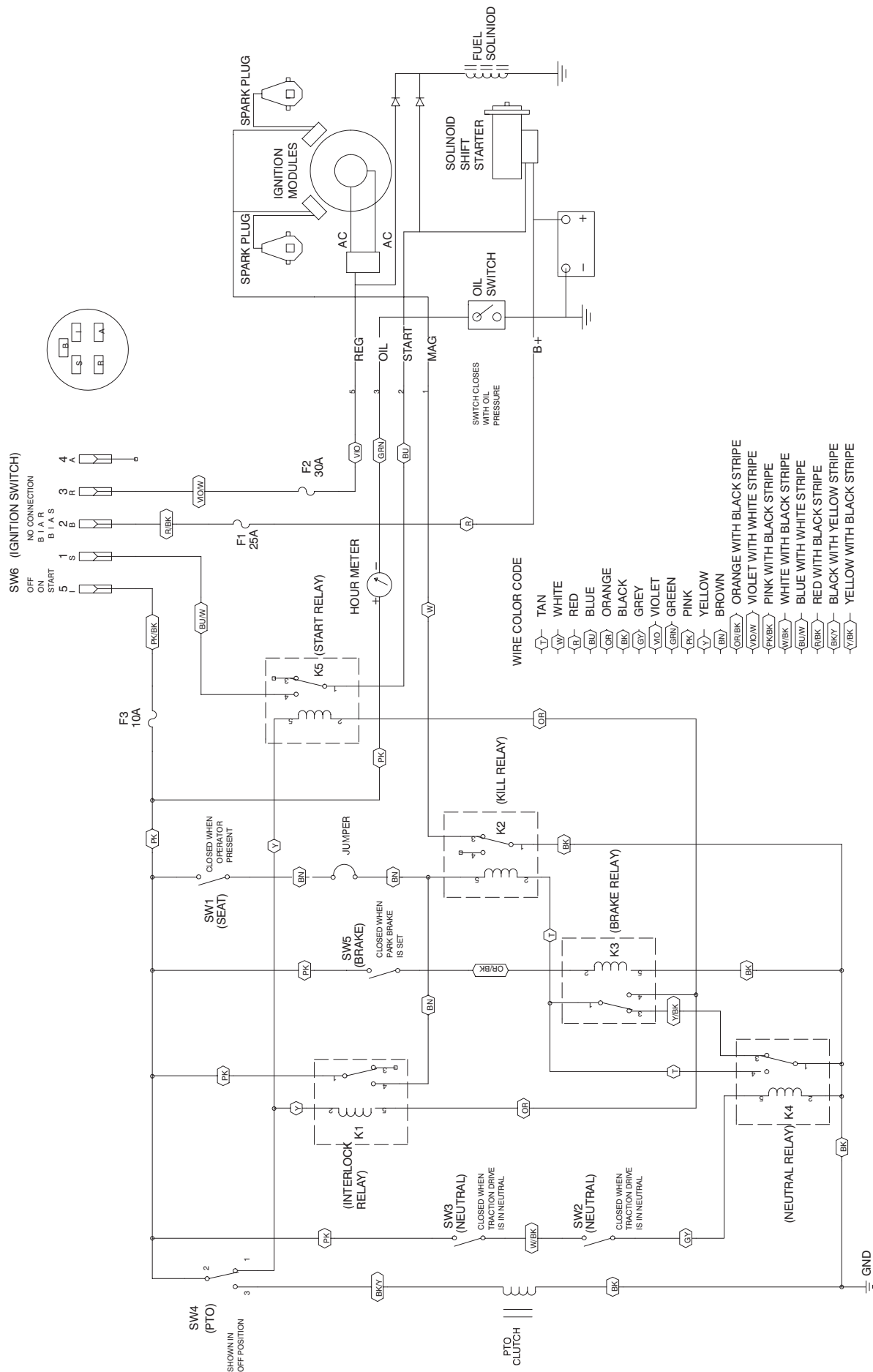
Sheet No.: 10

Drive Systems

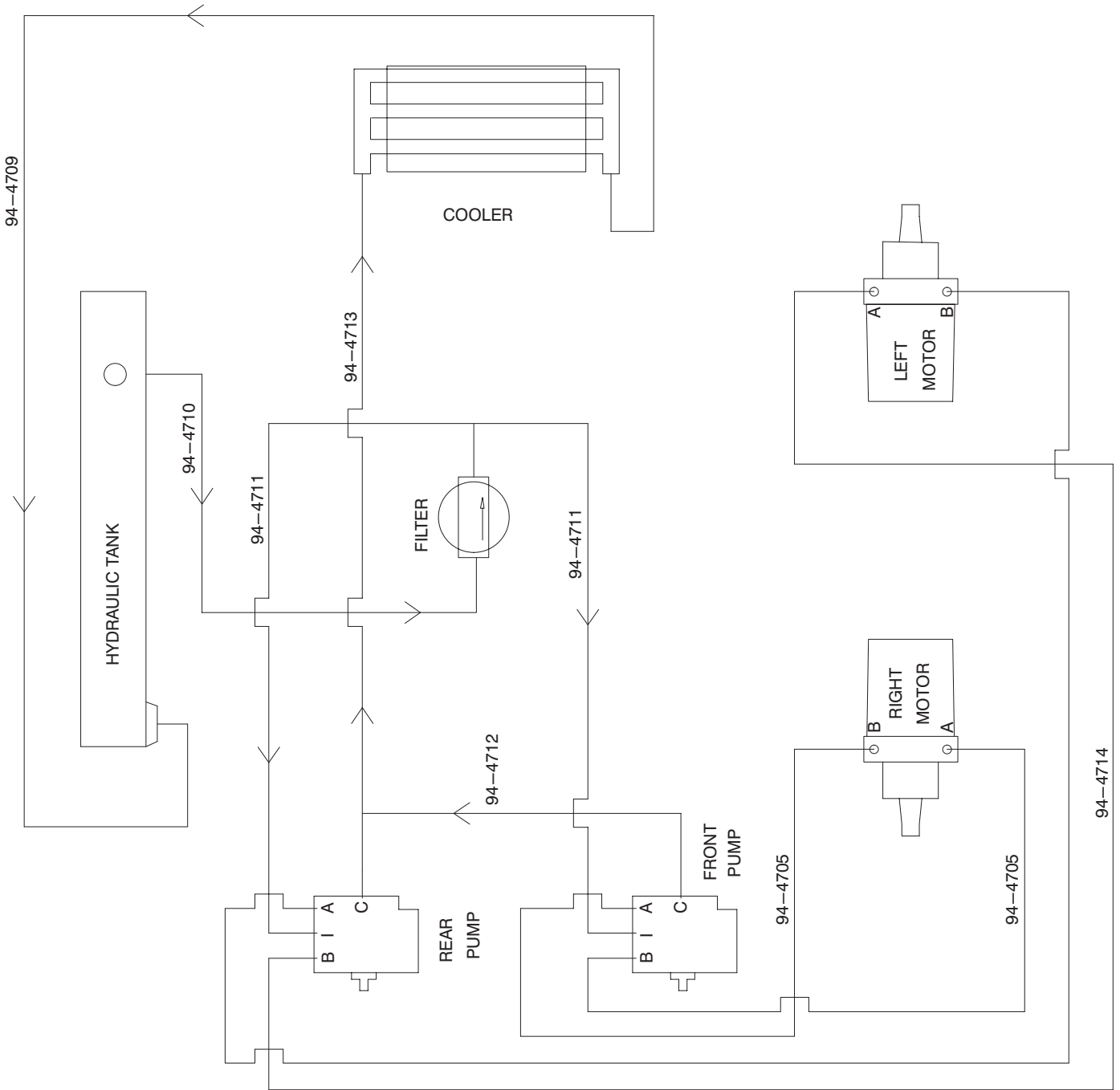
Ref. No.	Part No.	Qty.	Description
1	27-6230	1	Bolt-Wheel
2	323-11	2	Screw
3	95-1950	1	Arm ASM
4	94-9599	1	Spring-Extension
5	94-4792	1	Spacer-Idler Arm
6	94-4658-03	1	Pump-Mount
7	3256-24	13	Washer-Flat
8	323-4	8	Screw-HH
9	3253-21	8	Washer-Lock
10	3296-39	11	Nut-Lock
11	9202204	1	Washer
12	94-4688	1	Spacer-Engine Shaft
13	5-0698	1	Key
14	94-4628	1	Engine-Pulley
15	93-1622	2	Pulley-Idler
16	94-4689	1	Spacer-Engine Shaft
17	323-10	2	Screw-HH
18	94-4607	1	Belt-Pump Drive
19	94-4608	1	Belt-PTO
20	94-4632	1	Clutch ASM
21	3212-10	1	Screw
22	3256-25	1	Washer-Flat
23	98-1301-03	1	Stop-Clutch
24	323-6	2	Screw-HH
25	88-6460	1	Spring - Extension
26	66-4210	1	Pulley-Idler

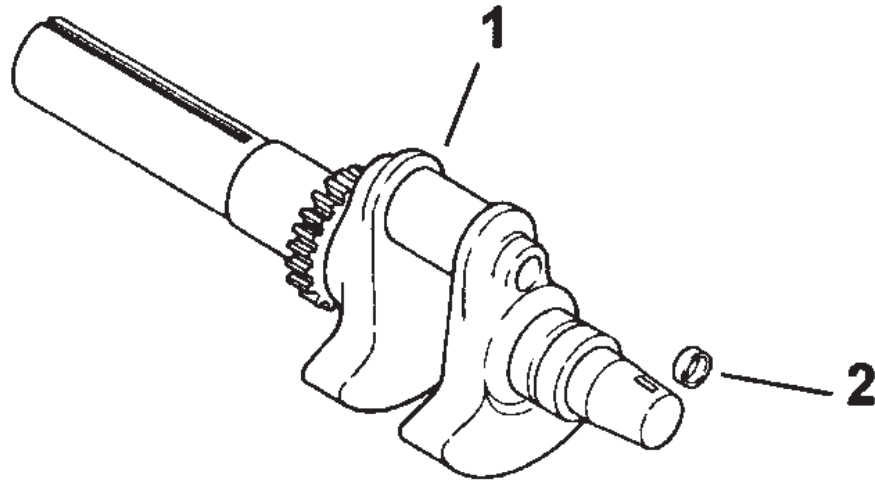
Ref. No.	Part No.	Qty.	Description
27	94-4685	1	Spacer-Idler
28	95-1967	1	Spacer-Spring
29	114511	1	Spacer
30	95-1968	1	Idler Arm ASM
31	323-31	1	Screw-Hhcs
32	94-4629	1	Clutch-Pulley
33	3246-3	2	Screw-HSH
34	94-4641	1	Gearbox-PTO Drive
35	3241-5	4	Set Screw
36	80-8170	2	Pulley-Pump
37	80-6090	2	Key-Square
38	3296-6	1	Nut-Lock
39	94-4787-03	1	Mount-Plate
40	323-18	4	Screw-HH
41	67-7490	1	Key

Electric Schematic



Hydraulic Schematic



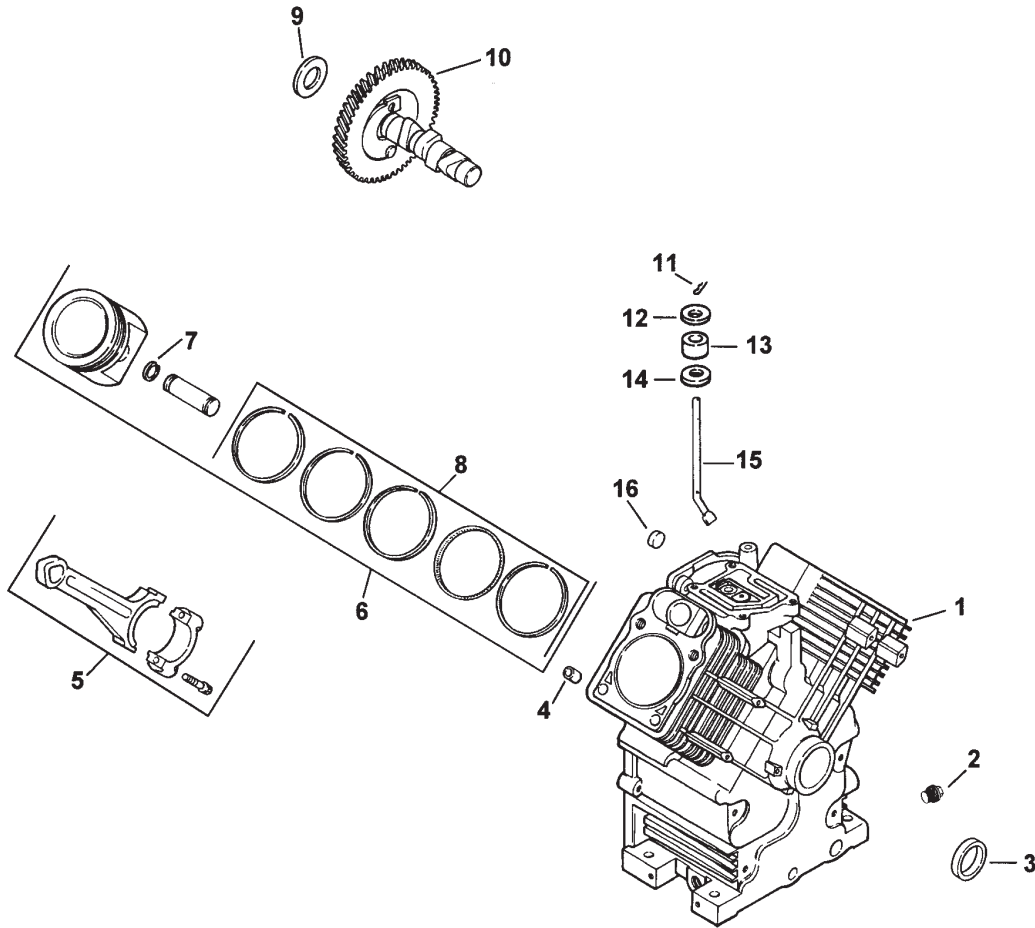


Sheet No.: 2
T-xxxx

Crankshaft

Ref. No.	Description	Part No.
1.	Crankshaft (Incl. 2)	24 014 72
2.	Plug, cup	52 139 09

Ref. No.	Description	Part No.
----------	-------------	----------

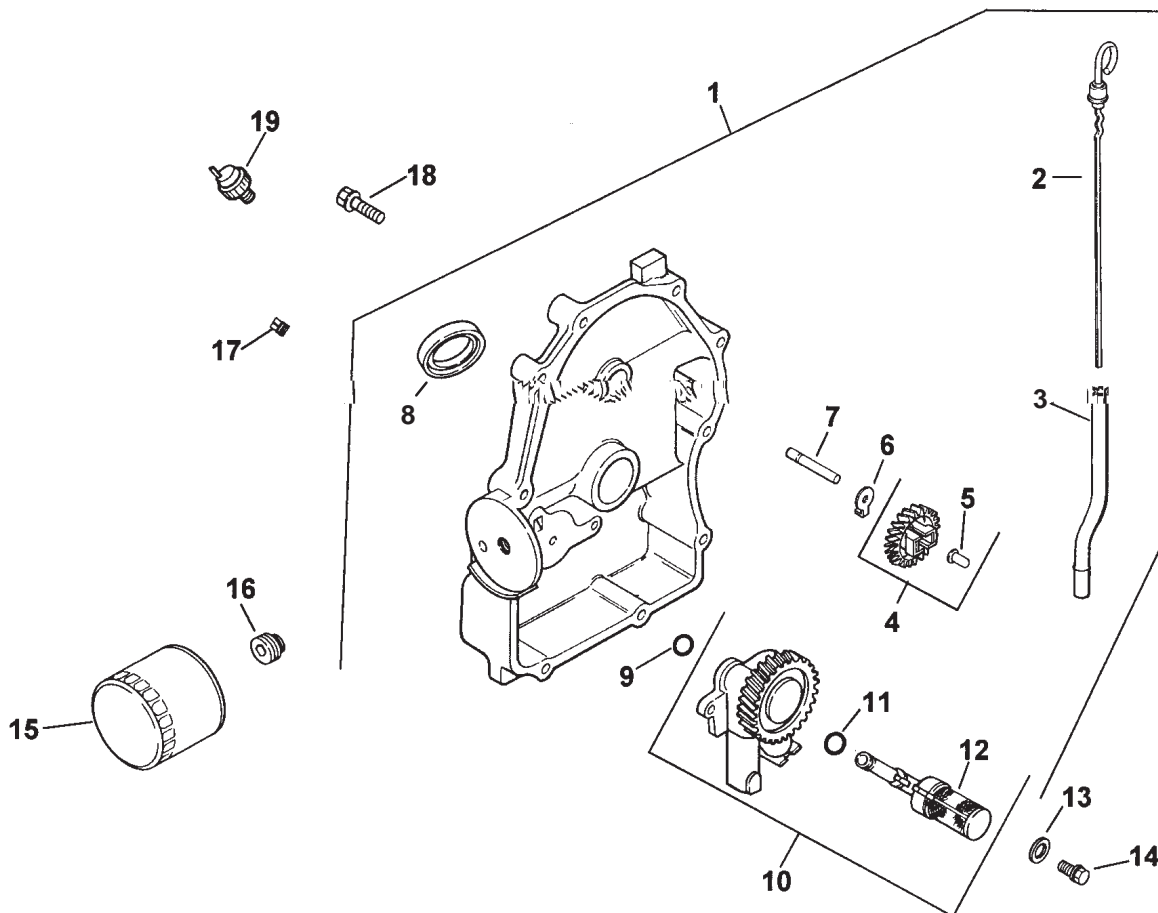


Sheet No.: 3
T-xxxx

Crankcase

Ref. No.	Description	Part No.
1.	Cylinder Block (USE: Miniblock)	24 782 01
2.	Plug, hex. head 3/8 (2)	X-75-10
3.	Seal, oil front	24 032 01
4.	Pin, dowel locating (6)	12 380 17
5.	Connecting Rod (Std.) (2)	24 067 09
	Connecting Rod (.25) (2)	24 067 10
6.	Piston w/Ring Set (Std.) (2)	24 874 01
	Piston w/Ring Set (.25) (2)	24 874 02
	Piston w/Ring Set (.50) (2)	24 874 03
7.	Retainer, piston pin (4)	24 018 01
8.	Ring Set (Std.) (2)	24 108 01
	Ring Set (.25) (2)	24 108 02
	Ring Set (.50) (2)	24 108 03
9.	Shim, camshaft (A.R.) red	12 422 09
	Shim, camshaft (A.R.) black	12 422 13
	Shim, camshaft (A.R.) white	12 422 07
	Shim, camshaft (A.R.) blue	12 422 08
	Shim, camshaft - yellow	12 422 10
	Shim, camshaft (A.R.) green	12 422 11
	Shim, camshaft (A.R.) gray	12 422 12
10.	Camshaft	24 012 05
11.	Pin, hitch	12 380 04
12.	Washer, flat	M-0631005
13.	Seal, governor cross shaft	12 032 01
14.	Washer, plain 1/4	X-25-102

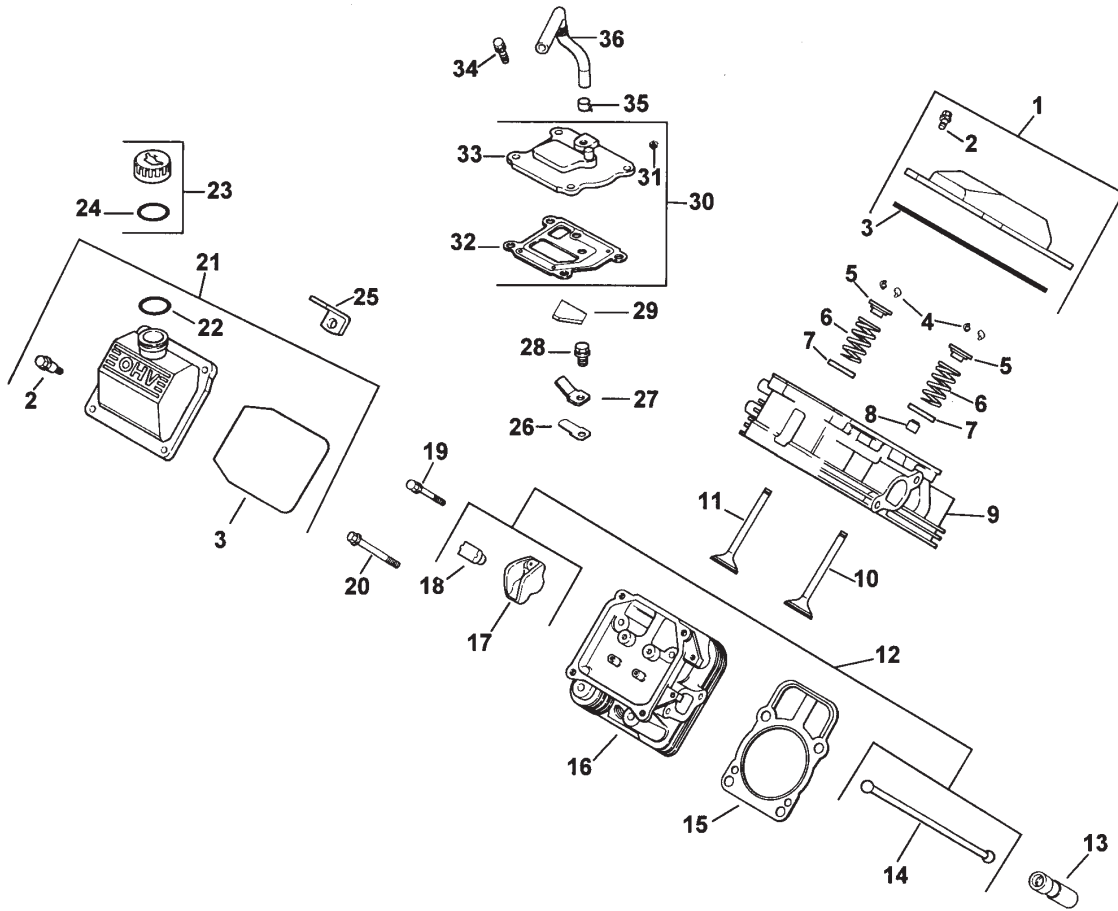
Ref. No.	Description	Part No.
15.	Shaft, governor cross	24 144 01
16.	Plug, cup	52 139 09



Sheet No.: 4

Oil Pan / Lubrication

Ref. No.	Description	Part No.	Ref. No.	Description	Part No.
1.	Plate, closure Asm (Inc 2-12)	24 009 82			
2.	Dipstick	24 038 06			
3.	Tube, dipstick	24 123 08			
4.	Kit, governor gear (Includes 5)	24 043 12			
5.	Pin, governor regulating	12 380 01			
6.	Tab, locking	52 448 02			
7.	Shaft, governor gear	12 144 02			
8.	Seal, oil (PTO end)	52 032 08			
9.	O-Ring	24 153 08			
10.	Oil pump Asm (Incl. 11-12)	24 393 10			
11.	O-Ring, oil pick-up	24 153 01			
12.	Pick-up, oil	24 381 04			
13.	Washer, plain 6mm (2)	M-0631005			
14.	Screw, hex. flange M6x1.0x25 (2)	M-0645025			
15.	Filter, oil	12 050 01			
16.	Nipple, oil filter	24 136 01			
17.	Plug, pipe 1/8"	X-75-23			
18.	Screw, hex. flange M8x1.25x45 (10)	24 086 16			
19.	Switch, pressure Decal, oil sentry	52 099 06 25 113 05			

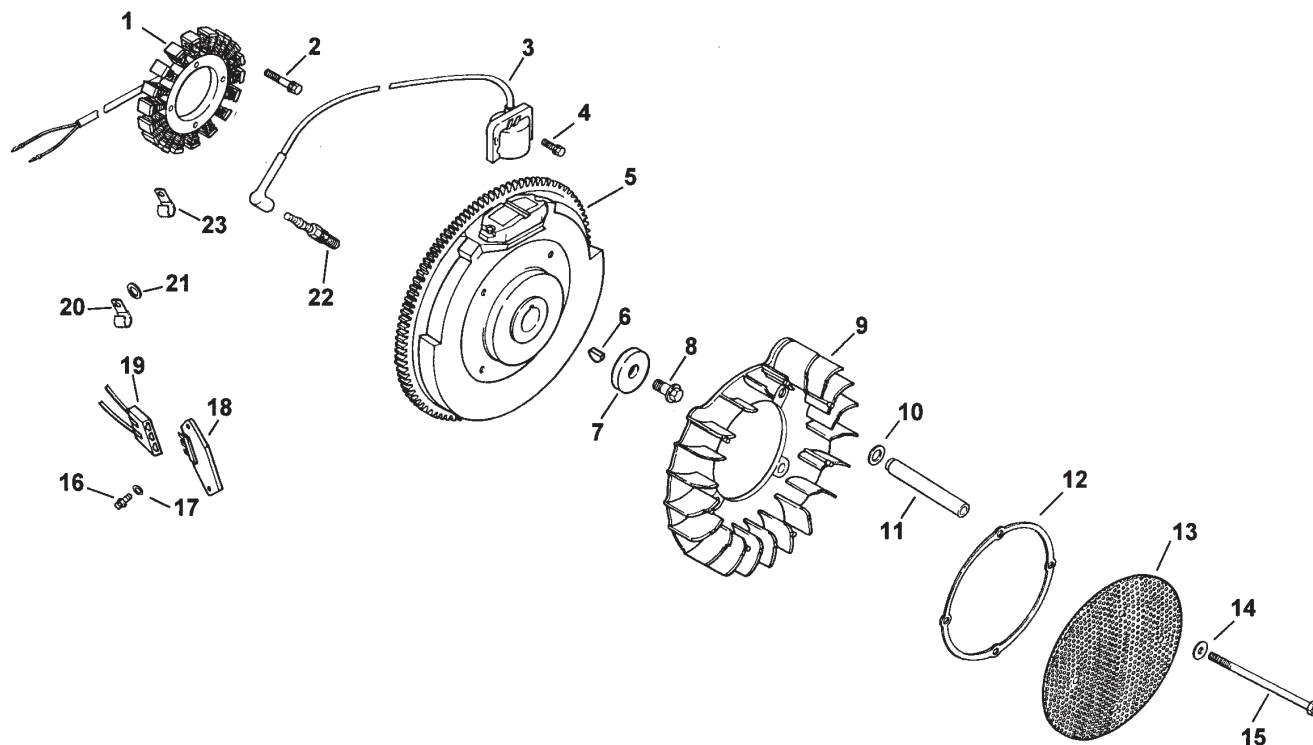


Sheet No.: 5
T-xxxx

Head / Valve / Breather

Ref. No.	Description	Part No.
1.	Kit, valve cover – plain (Incl. 2-3)	24 755 74
2.	Screw, shoulder (4)	24 086 32
3.	O-Ring, valve cover	24 153 16
4.	Kit, retainer (4)	12 755 03
5.	Cap, valve spring (4)	12 173 01
6.	Spring, valve (4)	24 089 02
7.	Retainer, spring (4)	235011
8.	Seal, valve stem (2)	24 032 05
9.	Head Asm, #1 cylinder	24 318 09
10.	Valve, intake (Std.) (2)	24 017 01
	Valve, intake (.25) (2)	24 017 02
11.	Valve, exhaust (Std.) (2)	24 016 01
	Valve, exhaust (.25) (2)	24 016 02
12.	Kit, valve train (Incl. 14,17,18)	24 755 66
13.	Lifter, valve (4)	12 351 02
14.	Rod, push (4)	24 411 05
15.	Gasket, cylinder head (2)	24 041 08
16.	Head Asm, #2 cylinder	24 318 10
17.	Arm, rocker (4)	25 186 01
18.	Pivot, rocker arm (4)	24 599 01
19.	Screw, hex. flange M6x1.0x34 (4)	M-0640034
20.	Screw, hex. flange M10x1.5x90 (8)	12 086 16

Ref. No.	Description	Part No.
21.	Kit, valve cover – oil fill (Incl. 2,3,22)	24 755 75
22.	O-Ring	24 153 09
23.	Kit, oil fill cap (Incl. 24)	24 755 46
24.	O-Ring, oil fill cap	24 153 03
25.	Strap, lifting	24 445 01
26.	Reed, breather	24 402 03
27.	Retainer, breather reed	12 018 01
28.	Screw, hex. flange M5x0.8x10	M-0545010
29.	Filter, breather	24 050 01
30.	Kit, breather (Incl. 31-33)	24 033 01
31.	Plug, allen head 1/8 pipe	X-75-23
32.	Gasket, breather	24 041 23
33.	Cover, breather	24 096 02
34.	Screw, hex. flange M6x1.0x20 (4)	M-0645020
35.	Clamp, breather	X-426-9
36.	Hose, breather	24 326 06

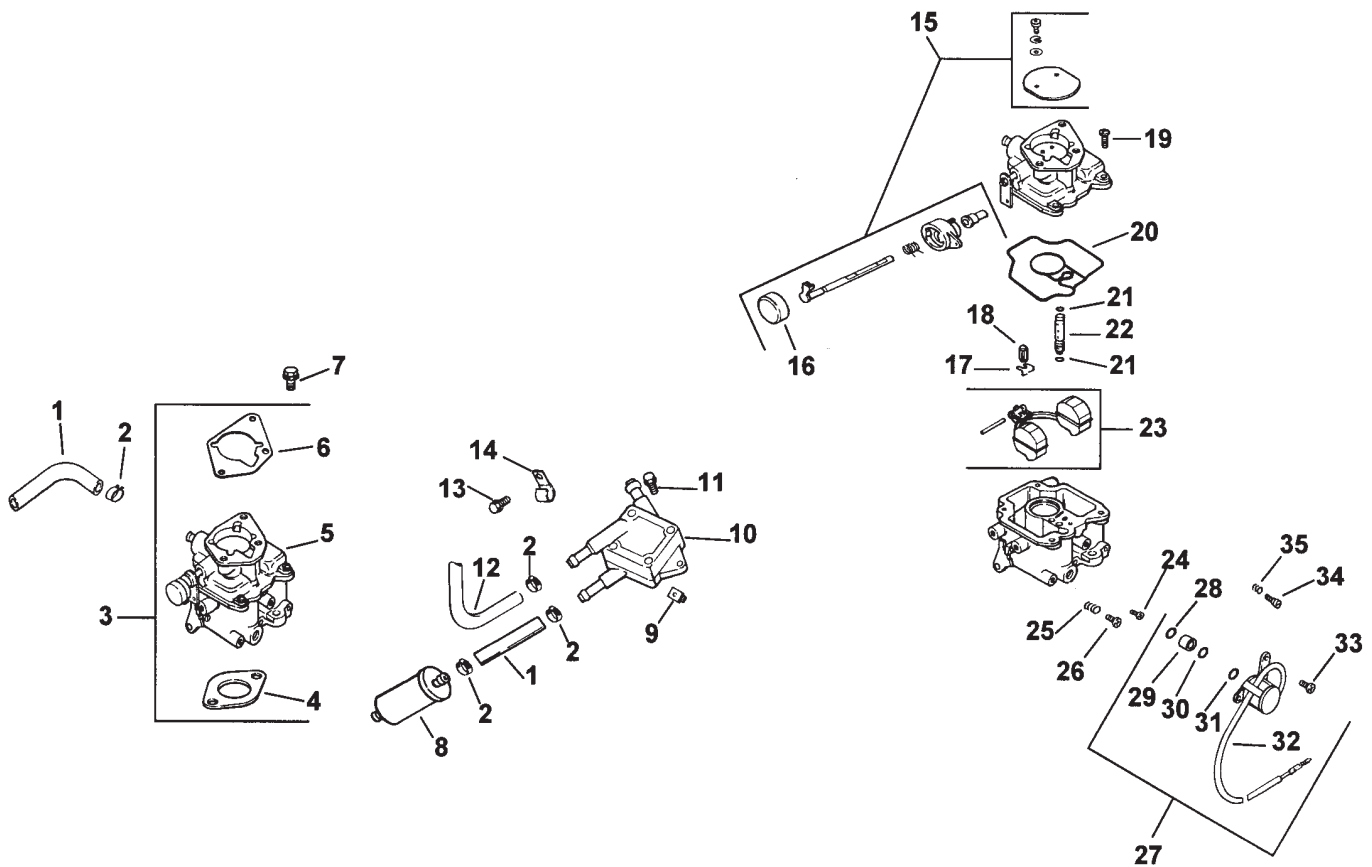


Sheet No.: 6
T-xxxx

Ignition / Electrical

Ref. No.	Description	Part No.
1.	Stator — 15 amp	24 085 03
2.	Screw, hex. cap M5x0.8x25 (2)	M-0548025
3.	Module, ignition (2)	24 584 01
4.	Screw, hex. flange (4)	M-0545020
5.	Flywheel	24 025 01
6.	Key	X-42-15
7.	Washer, plain 3/8	12 468 03
8.	Screw, hex. flange M10x1.5x46	12 086 14
9.	Fan	24 157 03
10.	Washer, spring 10 mm (4)	24 468 11
11.	Spacer, grass screen (4)	24 112 14
12.	Ring, support	24 141 06
13.	Screen, grass	24 162 25
14.	Washer, plain (4)	X-25-53
15.	Screw, hex. cap M6x1.0x100 (4)	M-0603100

Ref. No.	Description	Part No.
16.	Screw, phillips hd. 1 1-16x7/8 (2)	24 086 18
17.	Washer, plain 3/16 (2)	X-25-92
18.	Rectifier-regulator 15 amp	25 403 03
19.	Connector	236602
20.	Clip, cable	235173
21.	Washer, plain 1/4	X-25-63
22.	Spark Plug (2)	12 132 02
23.	Clip, cable	48 154 02
	Lead, black, (4" — 18 gauge — insulated grip barrel eyelet terminals)	25 518 28
	Harness, wiring	24 176 40
	Bracket, stator wire	24 126 71
	Screw, set (adjusts grass scraper blade)	25 086 43
	Washer, plain ground	X-25-63

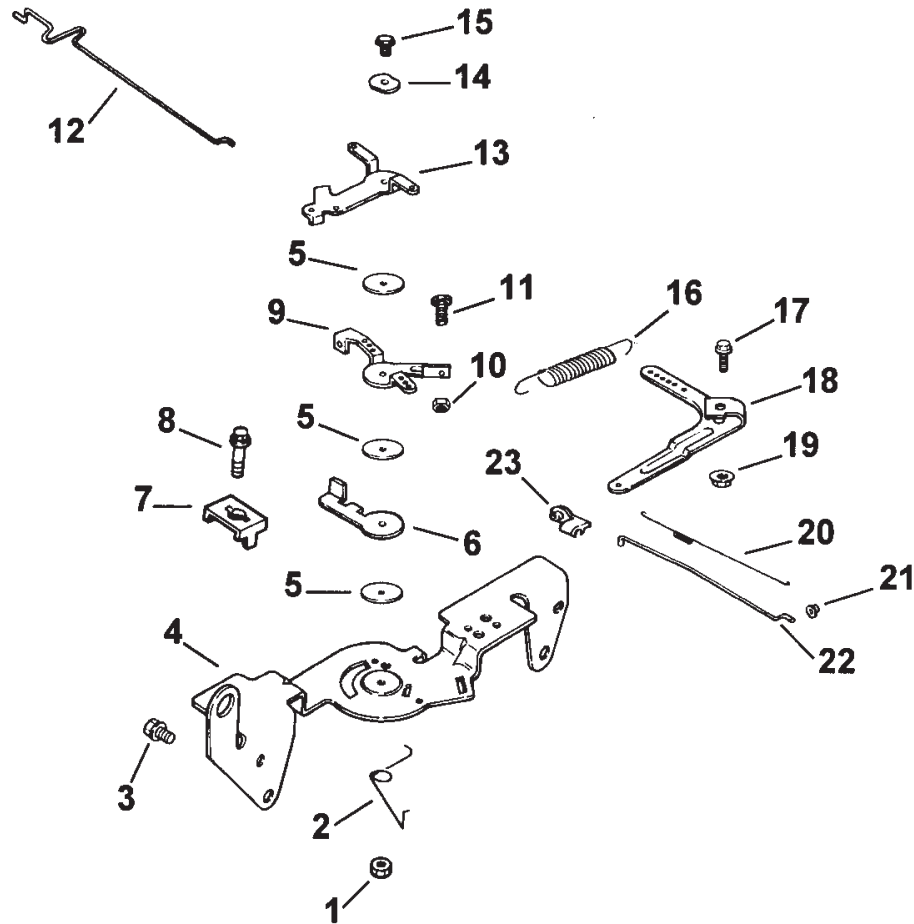


Sheet No.: 9
T-xxxx

Fuel System

Ref. No.	Description	Part No.
1.	Line, fuel 9" (2)	25 353 10
2.	Clamp, hose (6)	X-426-9
3.	Kit, carburetor w/gasket (Incl. 4-6)	24 853 32
4.	Gasket, air cleaner base	24 041 06
5.	Carburetor Asm (Incl. 11-31, carburetor repair kit (For information only not available separately)	24 757 03)
6.	Gasket, carburetor	24 041 17
7.	Screw, hex. flange (2)	M-0651030
8.	Filter, fuel	24 050 02
9.	Nut, plastic (2)	24 100 01
10.	Pump, fuel - pulse	24 393 04
11.	Screw, hex. cap 18 mm (2)	24 086 12
12.	Line, fuel 10"	52 353 20
13.	Screw, hex. flange M6x1.0x10	M-0650012
14.	Clip, cable	24 154 01
15.	Kit, choke repair (Incl. 16)	24 757 07
16.	Cap, choke lever	24 173 02
17.	Clip, inlet needle valve	24 154 01
18.	Valve, inlet needle	24 462 01
19.	Screw, carburetor body (4)	24 086 09
20.	Gasket, carburetor body	24 041 09
21.	O-Ring, slow jet (2)	24 153 02

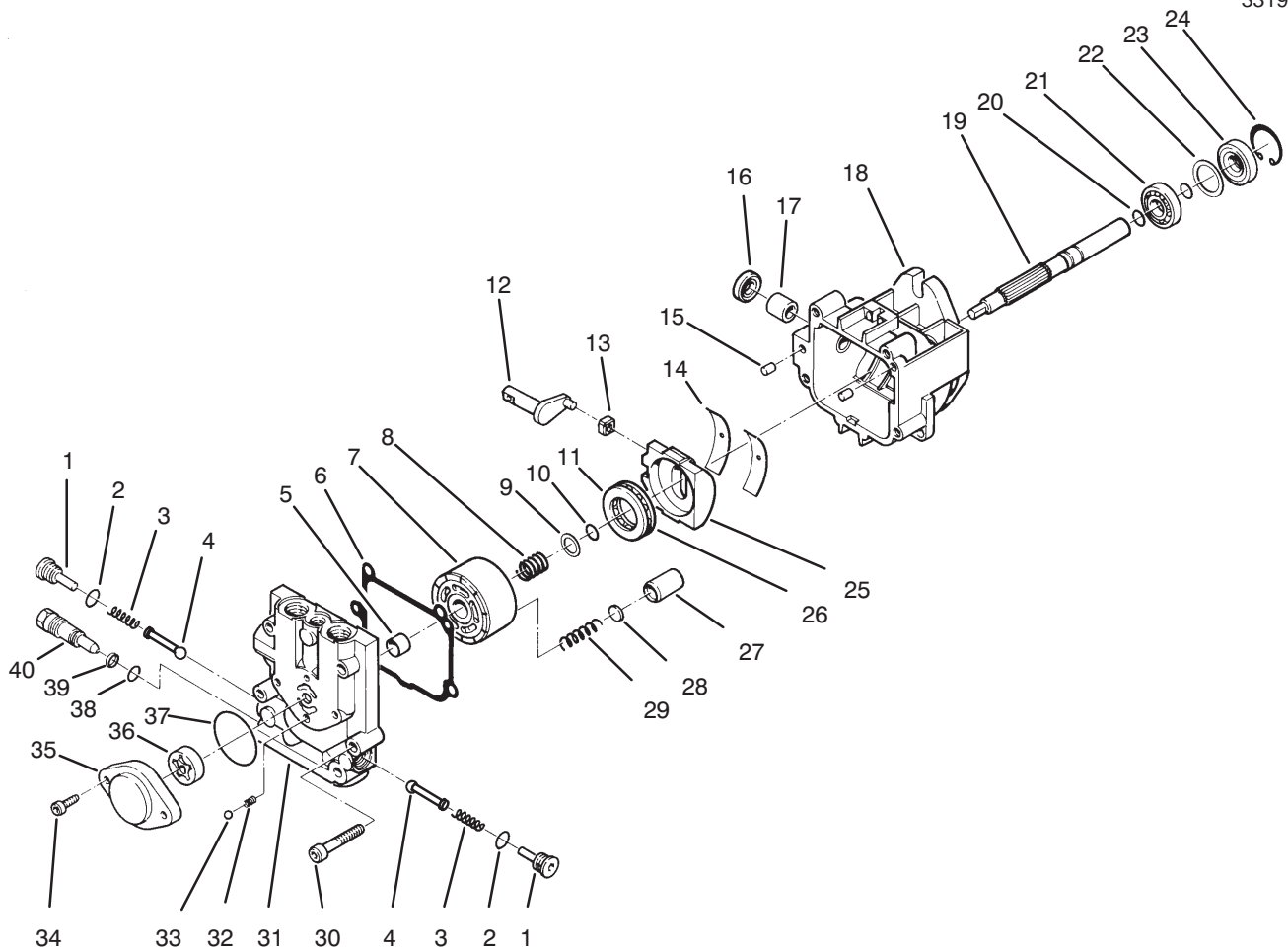
Ref. No.	Description	Part No.
22.	Jet, slow	24 337 01
23.	Kit, float repair	24 757 02
24.	Jet, main	24 337 02
25.	Spring, idle adjust screw	24 089 10
26.	Screw, idle adjusting	24 086 10
27.	Kit, solenoid (Incl. 28-33)	24 757 01
28.	O-Ring	24 153 06
29.	Seat, solenoid	24 521 01
30.	O-Ring	24 153 05
31.	O-Ring	24 153 04
32.	Solenoid	24 435 01
33.	Screw, solenoid (2)	24 086 07
34.	Needle, idle	24 368 01
35.	Spring, idle needle Kit, carburetor repair	24 089 11 24 757 03



Sheet No.: 10
T-xxxx

Engine Controls

Ref. No.	Description	Part No.	Ref. No.	Description	Part No.
1.	Nut, hex. lock M5x0.8	M-0547050			
2.	Spring, choke return	24 089 03			
3.	Screw, hex. flange M6x1.0x16	(4) M-0645016			
4.	Bracket, control	24 126 56			
5.	Washer, plain 5.5mm (3)	24 468 01			
6.	Lever, throttle actuator	24 090 07			
7.	Clamp, cable (2)	12 237 01			
8.	Screw, hex. flange M5x0.8x16	M-0545016			
9.	Lever, throttle control	24 090 03			
10.	Nut, hex M4x0.7	M-0446030			
11.	Screw, hex. cap M4x0.7x30	M-0401030			
12.	Linkage, choke	24 079 02			
13.	Lever, choke	24 090 05			
14.	Washer, spring 1/4	41 468 03			
15.	Screw, hex. flange M5x0.8x20	M-0545020			
16.	Spring, governor	24 089 18			
17.	Screw, hex. flange M6x1.0x25	SM-064205			
18.	Lever, governor	24 090 14			
19.	Nut, hex. flange M6x1.0	M-0641060			
20.	Spring, linkage	24 089 01			
21.	Bushing, linkage retaining	25 158 08			
22.	Linkage, throttle	24 079 01			
23.	Bushing, linkage retaining	25 158 11			



T-1236

Hydraulic Pump Assembly No. 98-1957

Ref. No.	Part No.	Qty.	Description
1	80-6120	1	Check Valve Kit (Incl. Ref. #2-4)
2		2	Seal - O-Ring
3		2	Spring
4		2	Poppet
5		1	Journal - Bearing
6		1	Gasket - End Cap
7		1	Cylinder Block Kit (Incl. Ref. #8-10 & 27-29)
8		1	Spring
9		1	Washer
10		1	Ring - Retaining
11		1	Plate - Thrust
12		1	Arm - Trunnion
13		1	Guide - Slot
14		2	Cradle - Bearing
15		2	Pin
16		1	Seal - Lip
17		1	Journal - Bearing
18		1	Housing - Assembly (Incl. Ref. #16 & 17)
19		1	Shaft
20		2	Ring - Retaining
21		1	Bearing - Ball
22		1	Spacer

Ref. No.	Part No.	Qty.	Description
23		1	Seal - Lip
24		1	Ring - Retaining
25		1	Swashplate Assembly
26		1	Roller - Thrust
27		5	Piston
28		5	Washer - Thrust
29		5	Spring - Piston
30		4	Screw
31		1	End Cap Assembly (Incl. Ref. #5)
32		1	Ball
33		1	Spring
34		2	Screw
35		1	Housing - Charge Pump
36		1	Gerotor Assembly
37		1	Seal - O-Ring
38		1	Seal - O-Ring
39		1	Ring - Back-Up
40		1	Valve - Bypass
*	80-6110	1	Charge Relief Valve Kit (Incl. Ref. #32-33)
*	80-6130	1	Overhaul Seal Kit (Incl. Ref. #6, 10, 16, 20, 23 & 37-39)

*Not Illustrated

Toro Part Number Index

Part No.	Page No.	Ref. No.	Qty.	Description
2844	9	25	1	Washer—Flat
8830	1	34	1	Retainer—"J"
101884	3	2:1	2	Nut—Hex
102950	3	3:2	1	Washer
105805	3	3:1	1	Nut
106948	3	19	1	Tray—Battery
106950	4	23	2	Bushing
111216	3	2	1	Switch—Ignition
113010	3	12	1	Hold Down
113050	3	5	1	Cover—Switch
113179	3	3:3	1	Nut
114511	10	29	1	Spacer
115850	7	38	1	Cable—Seat
115877	3	13	1	Battery
116397	3	32	5	Relay
9201604	3	2:2	1	Washer—Lock
9202204	10	11	1	Washer
9202574	8	5	3	Washer—Flt
5-0698	10	13	1	Key
10-6850	4	14	2	Drum Brake
10-6870	4	15	2	Hub—Wheel
12-5450	9	3	2	Screw—Thd Form
24-0760	2	10	1	Exchanger—Heat
26-3790	4	16	2	Nut—Lock
27-2320	8	16	2	Bearing
27-6230	10	1	1	Bolt—Wheel
28-3893	3	17	1	ASM—Wire
28-8080	3	14	1	Boot—Terminal
38-1420	7	42	1	Switch—Seat
42-9430	9	8	1	Bolt w/Washer
48-8010	9	10	1	Washer—Flat 6.4mm Id
48-8020	9	9	1	Washer—Spring Lock
48-9570	9	27	2	Washer—Lock M8
52-2480	7	41	2	Spacer—Wheel
57-5420	5	24	1	Screw—Shoulder
62-3340	24	3	3	Bearing Cup
62-3360	24	17	1	Bearing Cup
62-3370	24	16	1	Bearing Cone
62-3400	24	12	3	Seal
62-3420	24	7	A/R	Gasket (.015)
62-3430	24	8	A/R	Gasket (.005)
62-3440	24	9	A/R	Gasket (.003)
62-3490	24	13	3	Pipe Plug (Solid)
62-7650	2	19	1	Gasket
62-7770	3	36	2	Key—Ignition
63-8410	7	16	2	Washer—Flat
66-0120	2	3	1	Knob
66-4210	10	26	1	Pulley—Idler
67-7490	10	41	1	Key
67-8110	5	9	1	Filter—Oil
68-7070	24	11	1	Ring—Retaining
70-9840	4	17:5	4	Brake Shoe
70-9860	4	17:2	2	Cam Shaft
70-9870	4	17:1	2	Plate—Backing
70-9880	4	17:4	4	Spring—Return
71-1500	4	17	2	Brake ASM
74-0720	7	21	1	Tube—Manual
76-0800	6	45	2	Seal Kit—Wheel Motor
77-3100	1	30	1	Decal—Warning
78-0020	3	4	1	Hourmeter
78-3320	3	4:1	1	Clamp—Hour Meter
80-6090	10	37	2	Key—Square

*Not Illustrated

Toro Part Number Index (cont.)

Part No.	Page No.	Ref. No.	Qty.	Description
80-8170	10	36	2	Pulley-Pump
80-9350	9	6	1	Plate-Hot Surface
84-2000	4	20	2	Bracket-Brake
85-6540	4	13	8	Stud
86-9080	5	11	1	Head-Filter
88-6460	10	25	1	Spring - Extension
92-1705	5	28	1	Screen-Filter
92-6287	3	11	1	ASM-Wire (Ground)
92-6780	9	14	4	Nut-HHF
92-9811	3	3	1	Switch-Toggle
93-0307	1	12	1	Nut-Lock
93-0350	9	12	2	Gasket-Exhaust
93-1622	10	15	2	Pulley-Idler
93-3101	2	20	1	Gas Cap
93-4365	5	27	1	Oil Cap
93-5107	2	9	2	Fitting-Adapter
93-7340	7	10	1	Decal-Toro
93-9198	1	24	1	Decal-Warning
94-4602	4	2	1	Lever-Brake
94-4607	10	18	1	Belt-Pump Drive
94-4608	10	19	1	Belt-PTO
94-4618-03	1	1	1	Support-Engine
94-4624	4	12	1	Torsion Shaft
94-4628	10	14	1	Engine-Pulley
94-4629	10	32	1	Clutch-Pulley
94-4632	10	20	1	Clutch ASM
94-4635-01	7	45	1	Plate-Console Support
94-4640	6	41	2	Motor-Hyd Wheel
94-4641	10	34	1	Gearbox-PTO Drive
94-4642-03	5	23	1	Strap-Hydraulic Tank
94-4647-01	1	17	1	Castor Fork
94-4658-03	10	6	1	Pump-Mount
94-4665	1	11	1	Dustcap
94-4672-03	7	13	1	Latch-Utility Box
94-4678	5	4	2	Arm-Pump Control
94-4680	3	1	1	Harness-Main
94-4685	10	27	1	Spacer-Idler
94-4688	10	12	1	Spacer-Engine Shaft
94-4689	10	16	1	Spacer-Engine Shaft
94-4696	3	31	1	Angle-Mount
94-4698	7	1	1	Console
94-4699	7	15	1	Box-Utility
94-4700	5	29	1	Tank-Hydraulic
94-4701-03	5	7	1	Plate-Control
94-4702-03	5	5	1	Plate-Control
94-4705	6	38	2	Hose ASM
94-4709	5	21	1	Hose ASM-Hyd
94-4710	5	14	1	Hose ASM-Hyd
94-4711	5	13	2	Hose ASM-Hyd
94-4712	5	8	1	Hose ASM-Hyd
94-4713	5	19	1	Hose ASM-Hyd
94-4714	5	2	2	Hose ASM-Hyd
94-4717	8	9	1	Rod-Control
94-4718	8	13	1	Rod-Control
94-4721-03	7	20	1	Hinge-Utility Box
94-4752	1	20	1	Axle-Castor
94-4753	1	22	1	Tube-Spacer
94-4755	1	32	2	Pivot Pin ASM
94-4787-03	10	39	1	Mount-Plate
94-4792	10	5	1	Spacer-Idler Arm
94-4797-03	3	23	1	Channel-Mount Switch
94-4798-01	7	30	1	Plate-Tank Support

*Not Illustrated

Toro Part Number Index (cont.)

Part No.	Page No.	Ref. No.	Qty.	Description
94-4799-03	7	26	1	Strap-Fuel Tank
94-6141-03	2	30	1	Bracket-Cooler
94-6142	2	15	1	Bracket-Cooler
94-6146	3	18	2	Retainer-Battery
94-9350-03	7	5	1	Panel-Instrument
94-9383	1	23:2	1	ASM-Wheel
94-9384	1	23:1	1	Tire
94-9386	1	26:3	2	Wheel
94-9387	1	26:1	2	Tire
94-9391	4	30	1	Brake Lever LH
94-9392	4	24	1	Brake Lever RH
94-9398	4	25	2	Rod-Link
94-9450	4	11	1	Rod-Brake
94-9451	4	6	2	Link-Brake
94-9452	4	10	1	Brake Hub
94-9456	4	8	1	Transfer Shaft
94-9460	3	25	1	Plate-Switch Mount
94-9461	2	16	1	Engine Kohler Ch20
94-9488-03	7	8	1	Strap-Console
94-9489-01	1	6	1	Housing-Spindle
94-9490	8	3	2	Grip-Cushion
94-9491-01	7	34	1	Plate-Cover
94-9494	9	13	1	Manifold
94-9495	9	15	1	Muffler
94-9496	7	18	1	Pin-Pivot
94-9499	2	24	1	Tube-Oil Drain
94-9502	2	26	1	Hose-Gas
94-9515	8	17	1	Shaft-Control
94-9517-03	8	2	1	Handle-Control LH
94-9524	8	1	1	Spacer-Control
94-9525-03	5	15	1	Angle-Mount
94-9529-01	7	40	1	Plate-Seat
94-9551	8	7	1	Handle-Control RH
94-9552	8	6	2	Center Control ASM
94-9553	2	21	1	Fuel Tank ASM
94-9556-03	2	5	1	Cooler Shroud ASM
94-9561-03	9	11	1	Bracket-Manifold Shield
94-9563-03	2	7	1	Bracket-Shroud
94-9567	7	9	1	ASM-Seat
94-9573-01	4	26	2	Mount-Lever
94-9580	3	6	2	Clamp-J
94-9591-03	8	32	1	Mount-Channel
94-9593	8	34	2	Spacer-Damper
94-9594-03	8	19	1	Hub-Control
94-9596	8	33	2	Damper-Control
94-9597-03	2	18	1	Cover-Fuel Tank Opening
94-9598	1	3	1	Frame ASM
94-9599	10	4	1	Spring-Extension
95-1950	10	3	1	Arm ASM
95-1955	2	2	1	Control-Throttle
95-1956	1	31	1	Decal-Z320
95-1962	7	2	6	Tinnerman Clip
95-1967	10	28	1	Spacer-Spring
95-1968	10	30	1	Idler Arm ASM
98-0753	7	3	1	Decal-Instrument
98-1301-03	10	23	1	Stop-Clutch
98-1306	7	14	1	Decal-No Riders
98-1313	7	46	1	Decal-Operation
98-1319	2	22	1	Foam-Tank
98-1324	3	30	3	Switch-Interrupter
98-1326	9	24	1	Baffle-Heat
98-1327	9	7	1	Baffle-Heat

*Not Illustrated

Toro Part Number Index (cont.)

Part No.	Page No.	Ref. No.	Qty.	Description
98-1328	9	1	1	Baffle-Heat
98-1329	9	17	1	Baffle-Heat
98-1340	24	6	1	Housing
98-1341	24	1	12	Screw
98-1343	24	4	3	Bearing-Cone
98-1346	24	2	3	Cap
98-1348	24	5	1	Gear LH
98-1349	9	28	1	Baffle-Heat
98-1953-03	7	29	1	Bumper ASM
98-1954-01	6	43	1	Mount-Strap
98-1956	2	32	1	Control-Push Pull
98-1957	5	37	2	Pump-Hydraulic
98-1960	24	14	1	Shaft
98-1961	24	15	1	Gear RH
98-1962	24	10	1	Shaft
2112-11	9	16	1	Clamp-Muffler
232-27	1	26:2	2	Valve Stem & Cap Assembly
237-22	5	20:1	2	O-Ring
237-22	5	32:1	2	O-Ring
237-22	5	36:1	1	O-Ring
237-30	5	1:1	2	O-Ring
237-30	5	10:1	1	O-Ring
237-30	5	12:1	2	O-Ring
237-30	5	31:1	3	O-Ring
237-30	5	33:1	4	O-Ring
237-42	5	20:2	1	O-Ring
237-42	5	36:2	1	O-Ring
237-78	5	32:2	2	O-Ring
237-79	5	10:2	1	O-Ring
237-79	5	12:2	2	O-Ring
237-79	5	33:2	4	O-Ring
237-80	5	1:2	2	O-Ring
237-80	5	31:2	3	O-Ring
240-11	7	25	1	Grommet
242-50	1	27	8	Nut-Lug
2411-52	8	11	2	Rod-End RH
2411-53	8	20	2	Rod-End LH
2412-39	2	12	4	R-Clamp
2412-93	3	28	1	R-Clamp
2412-98	2	29	2	Clamp-Hose
2412-120	7	22	2	Clamp-R
254-61	1	7	2	Cup-Bearing
254-62	1	8	1	Cone-Bearing
254-70	1	5	1	Bearing w/Cone & Seal
282-2	4	31	2	Pin-Clevis
283-1	4	5	4	Pin-Clevis
283-66	8	26	4	Pin-Clevis
288-4	2	23	1	Cap-Pipe
302-5	8	37	3	Fitting-Grease
321-3	5	17	2	Screw-HH
321-4	3	16	2	Screw-HH
321-4	9	21	1	Screw-HH
321-5	3	27	5	Screw-HH
321-5	4	18	8	Screw-HH
322-2	7	47	2	Screw-HH
322-3	2	13	4	Screw-HH
322-3	3	22	4	Screw-HH
322-3	4	4	4	Screw-HH
322-3	7	35	4	Screw-HH
322-4	5	18	2	Screw-HH
322-4	7	44	6	Screw-HH
322-5	5	6	4	Screw-HH

*Not Illustrated

Toro Part Number Index (cont.)

Part No.	Page No.	Ref. No.	Qty.	Description
322-5	8	12	4	Screw-HH
322-7	6	44	1	Screw-HH
322-10	7	28	2	Screw-HH
323-4	3	20	1	Screw-HH
323-4	8	23	4	Screw-HH
323-4	10	8	8	Screw-HH
323-5	9	22	3	Screw-HH
323-6	1	25	6	Screw-HH
323-6	8	30	3	Screw-HH
323-6	10	24	2	Screw-HH
323-7	7	39	2	Screw-HH
323-8	7	17	1	Screw-HH
323-9	2	25	4	Screw-HH
323-9	7	24	1	Screw-HH
323-10	10	17	2	Screw-HH
323-11	10	2	2	Screw
323-18	4	27	4	Screw-HH
323-18	10	40	4	Screw-HH
323-31	10	31	1	Screw-Hhcs
324-4	9	19	1	Screw-HH
324-5	5	35	4	Screw-HH
325-2	1	14	2	Screw
325-9	6	39	8	Screw-HH
3212-10	10	21	1	Screw
3217-9	1	18	1	Nut-HH
3217-27	3	4:3	2	Nut-HH
3218-5	1	19	1	Nut-Jam
3220-2	8	10	2	Nut-Jam
3220-3	2	4	1	Nut-Hex Jam
3220-7	1	9	1	Nut-Jam
3220-20	8	8	2	Nut-Hex Jam
3230-1	5	22	1	Bolt-CARR
3230-2	7	43	1	Screw-CARR
3231-2	7	19	2	Screw-CARR
3233-27	1	4	4	Screw-CARR
3234-4	2	6	6	Screw-HH
3234-4	9	4	4	Screw-HH
3241-5	10	35	4	Set Screw
3246-3	10	33	2	Screw-HSH
3250-29	2	17	5	Screw
3253-3	5	16	2	Washer-Lock
3253-4	7	36	4	Washer-Lock
3253-5	9	23	3	Washer-Lock
3253-6	9	18	1	Washer-Lock
3253-21	10	9	8	Washer-Lock
3255-25	3	4:2	2	Washer-Lock
3256-2	7	37	5	Washer-Flat
3256-8	1	13	1	Washer-Flat
3256-14	3	34	3	Washer-Flat
3256-22	3	15	4	Washer-Flat
3256-23	3	26	2	Washer-Flat
3256-23	4	3	8	Washer-Flat
3256-23	5	25	1	Washer-Flat
3256-23	7	6	8	Washer-Flat
3256-24	4	28	1	Washer-Flat
3256-24	7	12	3	Washer-Flat
3256-24	10	7	13	Washer-Flat
3256-25	10	22	1	Washer-Flat
3256-26	1	16	4	Washer-Flat
3256-28	1	21	2	Washer-Flat
3256-39	8	15	1	Washer-Flat
3257-42	6	40	2	Key-Woodruff

*Not Illustrated

Toro Part Number Index (cont.)

Part No.	Page No.	Ref. No.	Qty.	Description
3258-166	2	31	2	Screw
3269-8	1	28	2	Rivet
3269-8	9	5	2	Rivet
3272-4	8	4	4	Pin-Cotter
3272-10	4	7	8	Pin-Cotter
3272-17	1	10	1	Pin-Cotter
3274-83	5	3	2	Screw-HSH
3290-343	1	33	2	Pin-Cotter
3290-357	7	32	1	Nut-Lock Flange
3290-378	2	28	1	Tie-Cable
3290-378	3	29	5	Tie-Cable
3290-378	6	42	2	Tie-Cable
3290-379	3	7	1	Tie-Cable
3296-2	3	33	3	Nut Lock
3296-6	10	38	1	Nut-Lock
3296-23	1	15	5	Nut-Lock
3296-29	2	14	4	Nut-Lock
3296-29	3	24	4	Nut-Lock
3296-29	4	1	4	Nut-Lock
3296-29	5	26	10	Nut-Lock
3296-29	7	31	9	Nut-Lock
3296-29	8	14	2	Nut-Lock
3296-39	1	2	6	Nut-Lock
3296-39	2	27	4	Nut-Lock
3296-39	4	29	4	Nut-Lock
3296-39	7	11	5	Nut-Lock
3296-39	8	35	7	Nut-Lock
3296-39	10	10	11	Nut-Lock
3296-42	2	1	2	Nut-Lock
3296-42	3	21	5	Nut-Lock
3296-42	4	21	8	Nut-Lock
3296-42	9	20	1	Nut-Lock
3296-47	8	18	2	Nut-Lock
32103-22	3	10	4	Nut-Wing
32104-76	7	23	2	Screw-Self TAP
32105-13	3	35	3	Screw-HH
32120-72	4	22	2	Ring-Retaining
32121-93	4	9	1	Pin-Spiral
32121-103	8	22	2	Pin-Spring
32128-42	5	34	4	Nut-Hex Flange
32144-4	7	33	4	Screw-TAP
32144-10	2	11	2	Screw-HH
32144-11	7	7	4	Screw-TAP
32144-14	7	27	2	Screw-HWH
32144-74	3	9	2	Screw
32144-124	7	4	6	Screw-PPH
32148-6	2	8	6	Insert
32148-6	9	2	4	Insert
33114-020	9	26	2	Screw-HH
340-4	5	33	4	Fitting-Hydraulic
340-77	5	36	1	Fitting-Hydraulic
340-89	5	1	2	Fitting-Hydraulic
340-94	5	20	1	Tee
340-97	5	32	2	Fitting-Hydraulic
340-98	5	12	2	Fitting-Hydraulic
340-105	5	31	3	Fitting-Elbow
340-157	5	10	1	Fitting-Hydraulic

*Not Illustrated

