



416-H Classic  
**Garden Tractor**

Model No. 73423 – 6900001 & Up

---

**Parts Catalog**

## ORDERING REPLACEMENT PARTS

To order replacement parts, please supply: the part number, the quantity, and the description of each part desired.

## Contents

Description	Page	Description	Page
Hood and Grille .....	1	Starter .....	24
Frame Steering .....	2	Engine Housing .....	25
Hoodstand, Console .....	3	Flywheel .....	26
Footrests .....	4	Cam & Crankshafts .....	27
Gauges, Throttle .....	5	Oil Fill Tube & Base .....	28
Hydraulic Lift System .....	6	Oil Filter .....	29
Hydraulic Lift System .....	7	Gear Case & Ignition Controls .....	30
Hydro Controls, Brake .....	8	Ignition Electronics .....	31
Hydro Drive .....	9	Air Cleaner .....	32
Fender, Seat .....	10	Governor .....	33
PTO Clutch Pulley .....	11	Intake Manifold & Carburetor .....	34
PTO Clutch Linkage .....	12	Choke Control .....	35
Engine .....	13	Fuel Filter & Pump .....	36
Transmission .....	14	This Page Intentionally Left Blank .....	37
Wheels And Tires .....	15	Engine Cylinder Block .....	38
Hitches .....	16	Engine Cylinder Block .....	39
Battery .....	17	Wire Harness .....	40
Fuel Tank .....	18	Wire Harness .....	41
Front Plate, Relays .....	19	416-H Wire Harness Attachment & Component's .....	42
Hydrostatic Transmission .....	20	Engine Wire Harness .....	43
Hydrostatic Transmission (Continued) .....	21	PC Board & Test Switch .....	44
Eaton Hydrostatic Transmission #110-062 .....	22		
Eaton Hydrostatic Transmission #110-062 .....	23	<b>Note:</b>	

## Accessories

Description	Model / Parts No.	Description	Model / Parts No.
.. 38" Side Discharge Mower .....	78216	.. 48" Snow Blade .....	79252
38" Recycler Mower .....	78226	42" Snow Thrower .....	79263
42" Side Discharge Mower .....	78231	36" Tiller .....	79271
48" Side Discharge Mower .....	78260	Hour Meter Kit .....	92-6898
52" Side Discharge Mower .....	78280	Indicator Light .....	92-6897
52" Recycler Mower .....	78285	Inner Tube, Front .....	100079
38" Twin Bagger .....	79202	Inner Tube, Rear .....	7007
48" Vacuum Bagger .....	79203		

## Part Description Abbreviations

Part descriptions in this catalog may include the following abbreviations.

Abbreviation	Meaning	Abbreviation	Meaning
AR .....	as required	ASM .....	assembly

CARR .....	carriage	HWHTF .....	hex washer head
DEG .....	degrees		thread forming
FH .....	flat head	INC .....	incorporated
GA .....	gauge	LH .....	left hand
HF .....	hex flange	PH .....	pan head
HFW .....	hex flange washer	PPH .....	Phillips pan head
HH .....	hex head	PTO .....	power take off
HHF .....	hex head flange	RH .....	right hand
HHST .....	hex head self tapping	SFH .....	slotted fillister head
HJ .....	hex jam	SH .....	square head
HOC .....	height-of-cut	SHWH .....	slotted hex washer head
HS .....	hex socket	SPH .....	slotted pan head
HSBH .....	hex socket button head	STD .....	standard
HSFH .....	hex socket flat head	TAP .....	self tapping
HSH .....	hex socket head	TH .....	truss head
HWH .....	hex washer head	TTH .....	Torx truss head
		WH .....	wing head

## Important Format Explanations

This catalog uses special formats to convey information in illustrations and parts lists. Specifically, one format is used in conjunction with service assemblies and another with quantities associated with reference numbers.

### Service Assemblies

Parts within service assemblies have reference numbers in the form *X:Y*. *X* is the reference number of the service assembly and *Y* is a sequential number unique to each part within the service assembly.

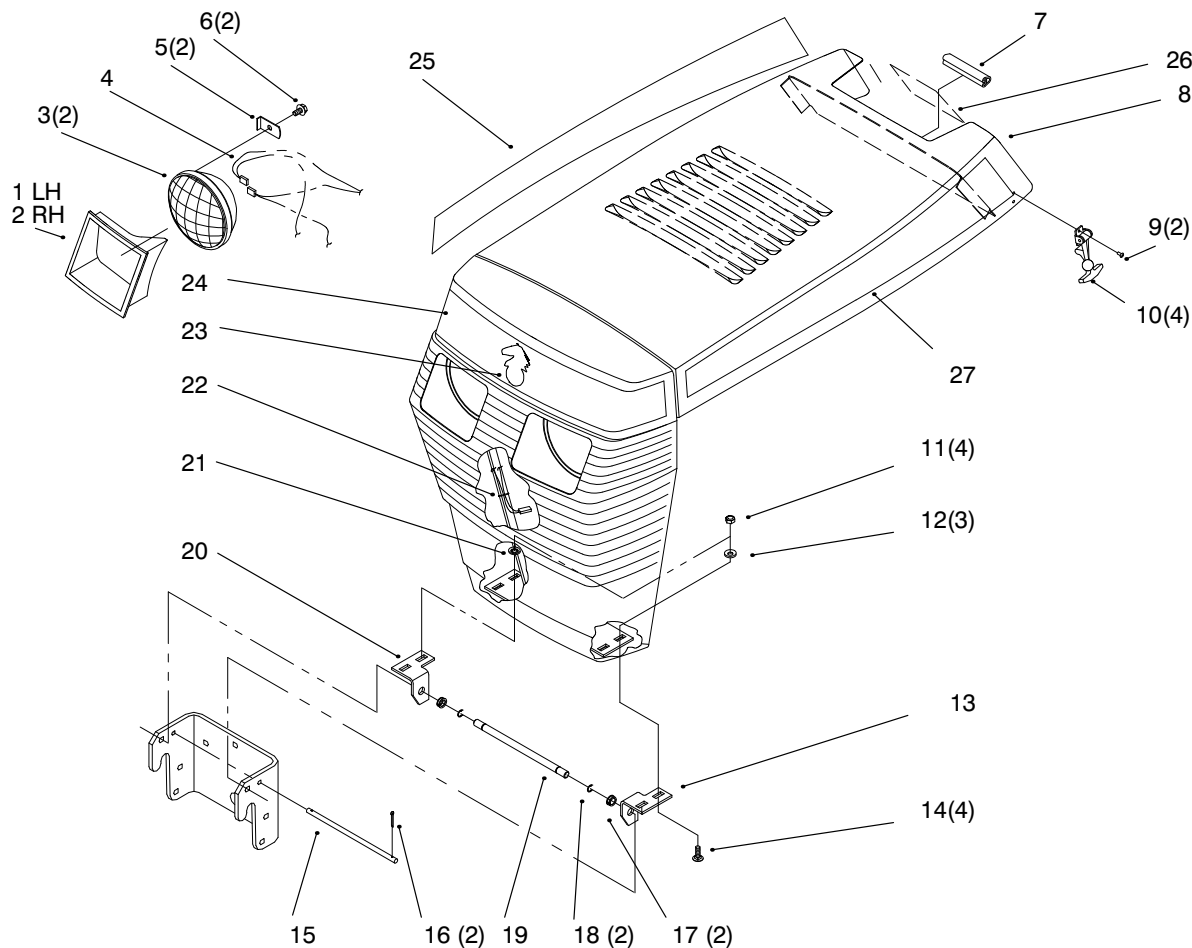
For example, a wheel assembly might be identified by reference number 6, the tire by 6:1, the valve by 6:2, and the wheel by 6:3. When you order the assembly identified by reference number 6, you receive all parts identified by reference numbers 6:1, 6:2, and 6:3. However, you may also order any part individually.

Reference numbers of this type appear in part lists and as callouts in illustrations.

## Reference Numbers with Quantities

Illustrations may have a quantity in parentheses next to a reference number, in the form  $X (Y)$ .  $X$  is the reference number.  $Y$  in parentheses is the quantity of the part identified by the reference number.

For example, the illustration callout 4 (2) indicates that two parts are used in that instance.



Sheet No.: 2

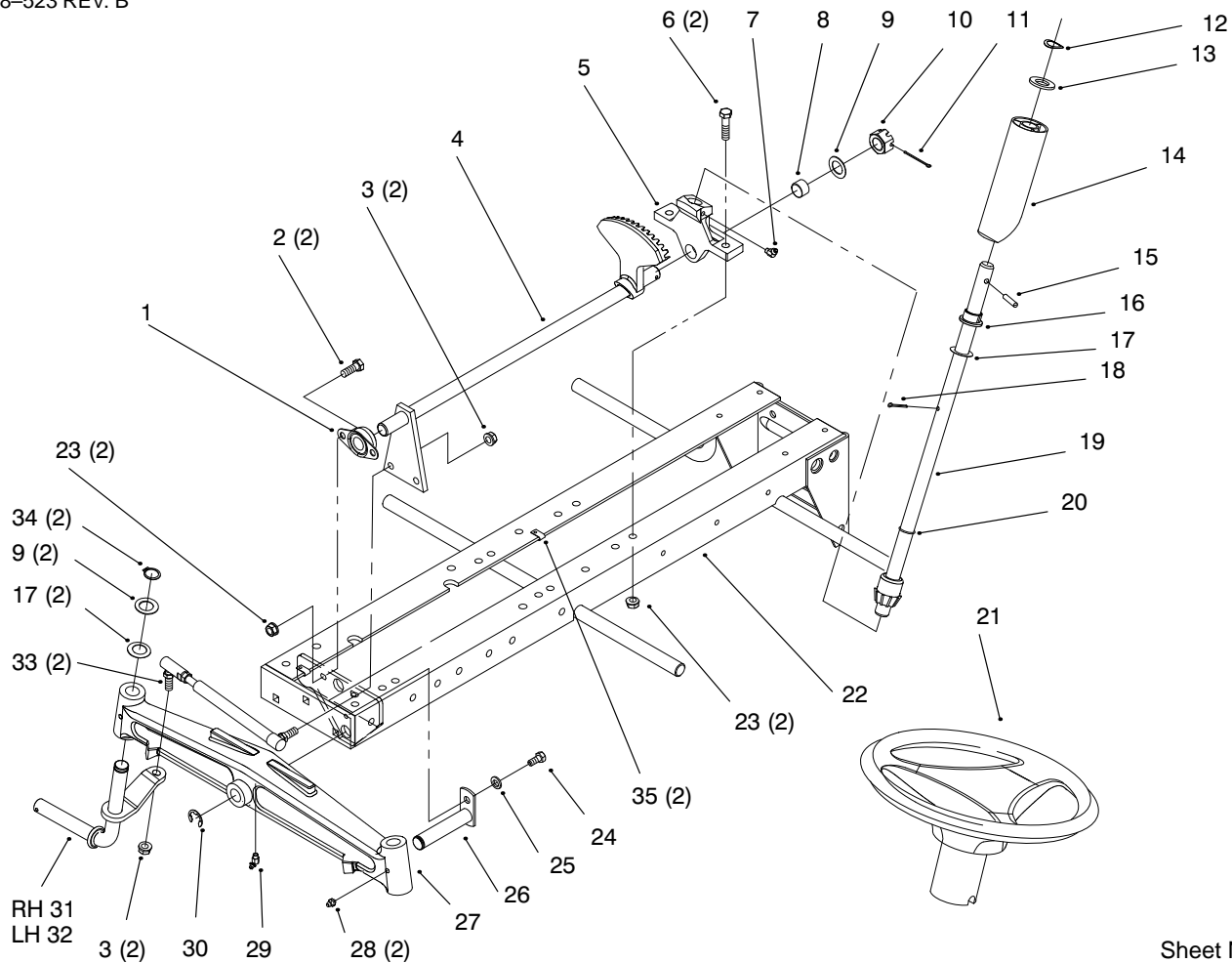
## Hood and Grille

Ref. No.	Part No.	Qty.	Description
1	109495	1	Bezel-LH Headlight
2	109494	1	Bezel-RH Headlight
3	102881	2	Headlamp
4	114052	1	Wire Harness
5	109459	2	Clamp-Headlight
6	9266714	2	Screw-HWHTF
7	111757	1	Edging
8	112358	1	ASM-Hood & Grill
9	117432	4	Poprivet
10	117344	2	Handle-Latch
11	3296-42	4	Nut-Lock
12	3256-22	3	Washer-Flat
13	116747	1	Bracket-Grill LH
14	3229-25	4	Screw-CARR
15	101850	1	Rod-Hood Stop
16	3272-1	2	Pin-Cotter
17	5979	2	Bushing-Nyliner
18	105797	2	Ring-Ext Ret
19	116745	1	Rod-Grill Pivot
20	116746	1	Bracket-Grill RH
21	3254-2	1	Washer-Lock
22	3290-378	1	Tie-Cable
23	94-3709	1	Horse Head Logo
24	92-9826	1	Decal-Front Hood
25	94-6333	1	Decal-Hood RH Top

Ref. No.	Part No.	Qty.	Description
26	92-9837	1	Decal-Danger
27	94-6332	1	Decal-Hood LH Top

Part Identified in illustration but not in part list are not used on this model

3318-523 REV. B



Sheet No.: 3

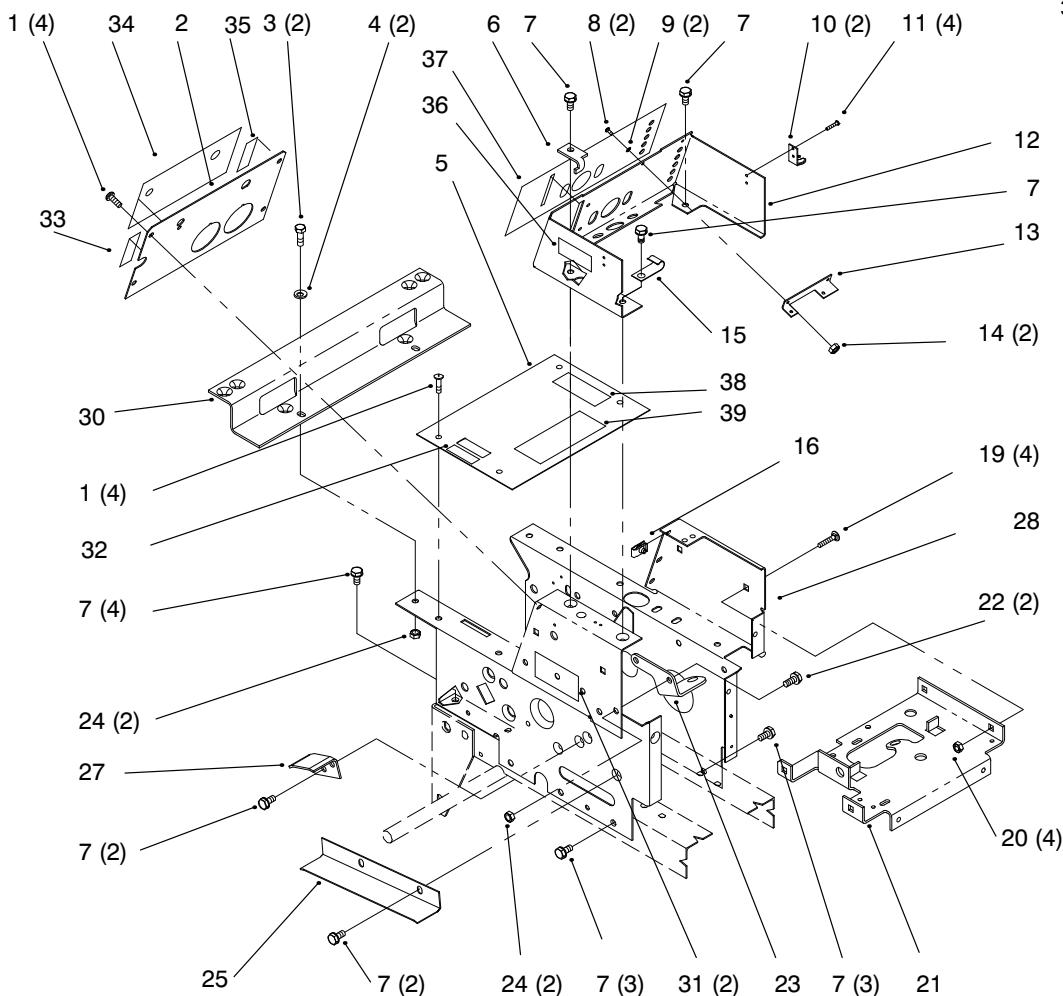
## Frame Steering

Ref. No.	Part No.	Qty.	Description
1	6472	1	Bearing-Flanged
2	323-6	2	Screw-HH
3	3296-6	4	Nut-Lock
4	78-2880	1	Lower Steering
5	88-2710	1	Support-Lower Steering
6	323-8	2	Screw-HH
7	1481	2	Fitting-Grease
8	6397	1	Bearing-Bronze
9	1278	3	Washer-Shim
10	32136-5	1	Nut-Slotted
11	3272-19	1	Pin-Cotter
12	7896	1	Washer-Bowed
13	109262	2	Washer
14	113443	1	Tube-Steering Shaft
15	32121-111	1	Pin-Spiral
16	109189	1	Bearing-Flange
17	3272-21	1	Pin-Cotter
17	5210	14	Washer-Shim
19	92-4987	1	Steering Shaft
20	237-69	1	O-Ring
21	94-3519	1	Steering Wheel 15"
22	94-3715-01	1	Frame
23	3296-39	4	Nut-Lock
24	322-1	1	Screw-HH
25	3253-4	1	Washer-Lock

Ref. No.	Part No.	Qty.	Description
26	6216	1	Pin
27	5638	1	Axle-Front
28	302-5	2	Fitting-Grease
30	5618	1	Ring-Retaining
31	113382	1	Spindle
32	113381	1	Spindle
33	78-2900	2	ASM-Tie Rod
34	32120-93	2	Snap Ring

Part Identified in illustration but not in part list are not used on this model

3318-523 REV. B



Sheet No.: 7

## Hoodstand, Console

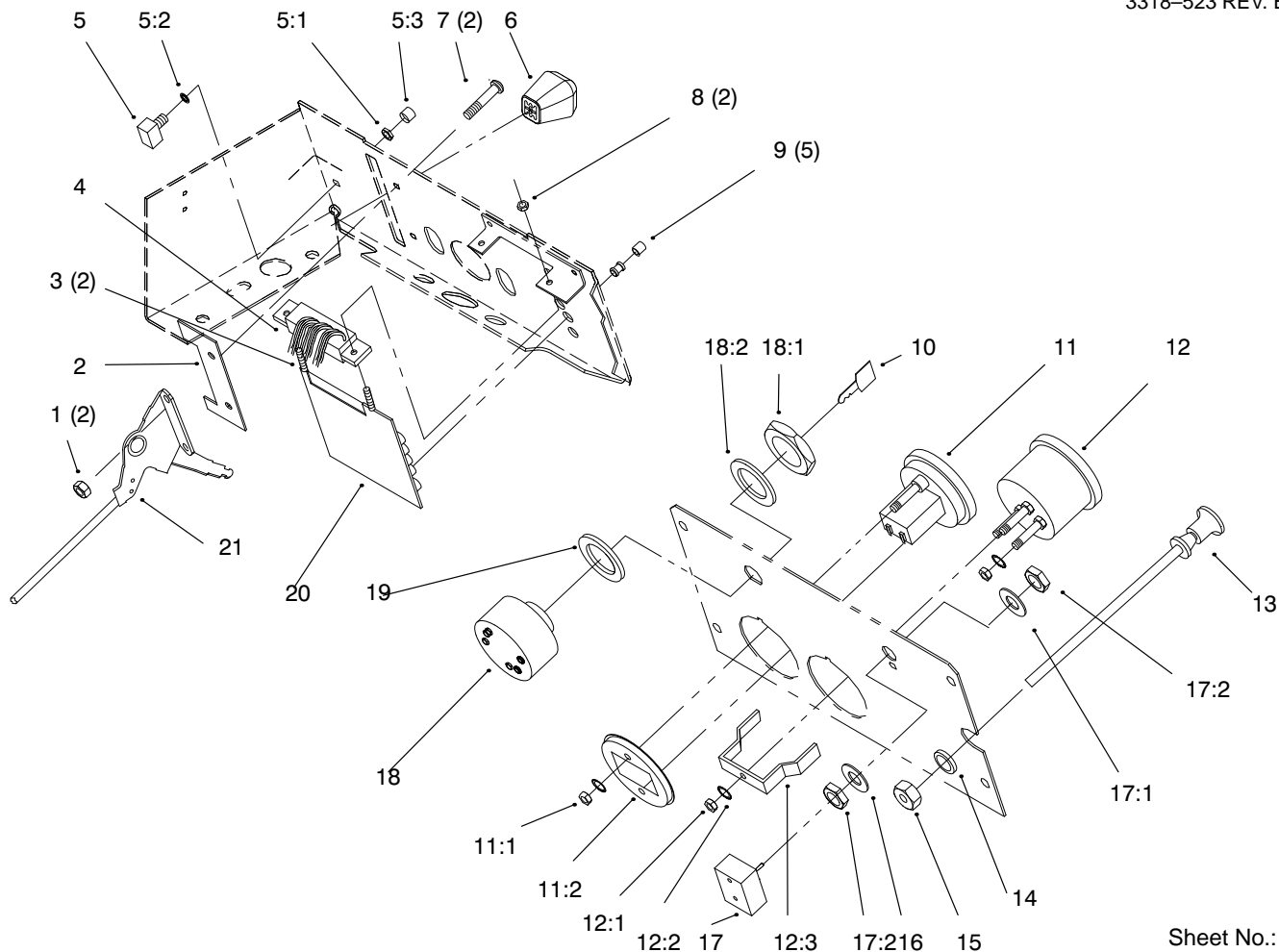
Ref. No.	Part No.	Qty.	Description
1	9108372	8	Screw-Phcr
2	78-5620	1	Plate-Hoodstand Rear
4	3256-23	2	Washer-Flat
5	116862	1	Plate-Top Hoodstand
6	112415	1	Stop-PTO
7	9266944	13	Screw-HH
8	9107622	2	Screw Phcr
9	9201504	2	Washer-Lock
10	117343	2	Latch-Hood
11	117431	4	Poprivet
12	78-5610	1	Console
13	112506	1	Bracket
14	9159604	2	Nut-Hex
15	111392	1	Retainer-Offset"j"
16	107069	4	Nut-Speed
17	111332	A/R	Switch-Interlock
18	9157324	A/R	Nut-Lock
19	117371	4	Screw-CARR
20	9151126	4	Nut-HH
21	78-3000	1	-Battery Support Bkt
22	322-3	2	Screw-HH
23	78-1540	1	Bracket-Control
24	3296-29	4	Nut-Lock
28	92-1525	1	Hoodstand
29	9109482	A/R	Screw-Phcr
30	107951	1	Bracket-Fender Front

Ref. No.	Part No.	Qty.	Description
31	94-6341	2	Decal-Model 416-Hydro
33	111960	1	Decal-PTO Clutch
34	79-2470	1	Decal-Back Plate
35	78-7300	1	Decal-Choke
36	111926	1	Decal-Elec System
37	78-7270	1	Decal-Lower Dash
38	116445	1	Decal-Parking Brake
39	92-8946	1	Decal-Danger



Part Identified in illustration but not in part list are not used on this model

3318-523 REV. B

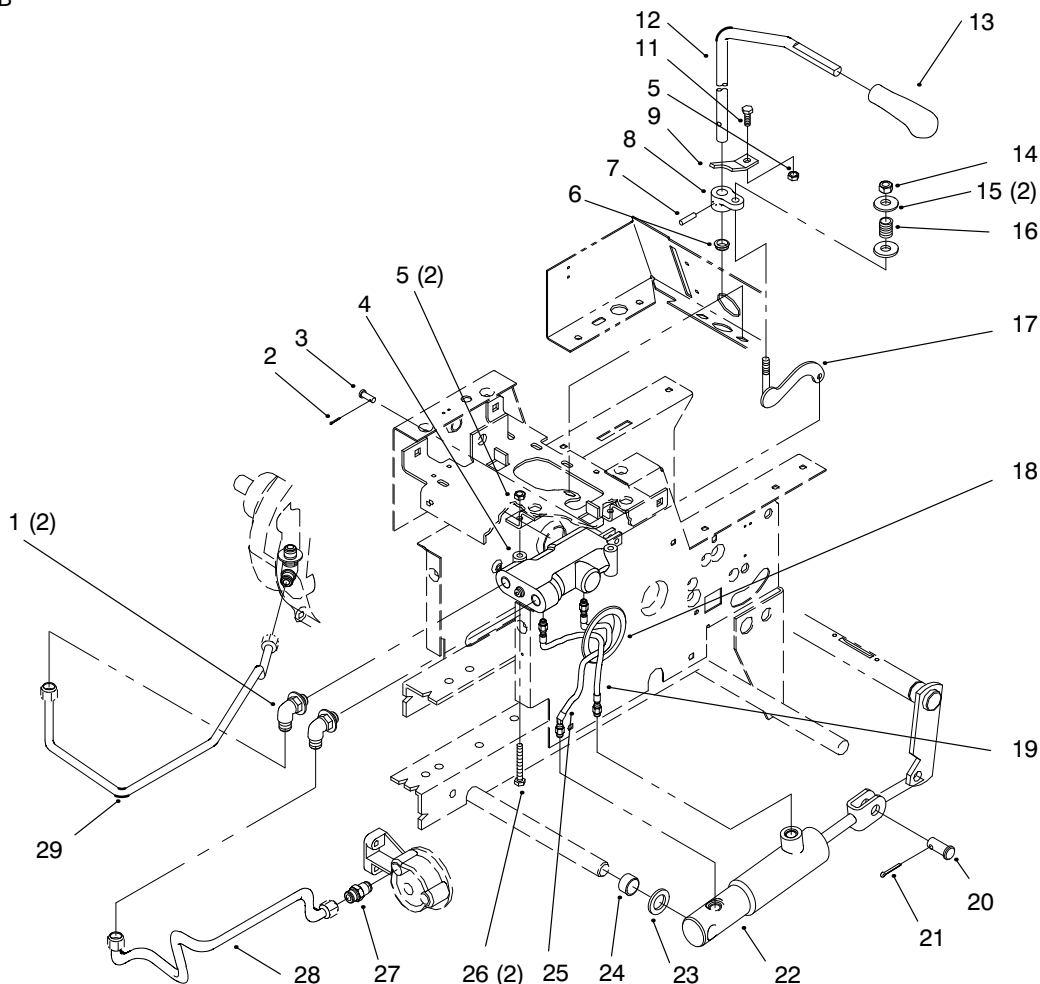


Sheet No.: 11

## Gauges, Throttle

Ref. No.	Part No.	Qty.	Description
1	9157404	2	Nut
2	120590	1	Stop-Throttle
3	9107562	2	Screw-Phcr
4	117377	1	Harness-P C Board
5	116796	1	Switch-Button
6	66-0120	1	Knob
7	9107922	2	Screw-Phcr
8	9157324	2	Nut-Lock
9	111343	5	Lens & Bushing ASM
10	62-7770	2	Key-Ignition
11	94-3723	1	Hourmeter
11:1	32149-9	1	Nut
11:2	94-1849	1	Retainer
12	79-0060	1	Voltmeter
12:1	3217-27	1	Nut
12:2	3255-25	1	Washer
12:3	78-0080	1	Bracket
13	114951	1	Control-Choke
14	3256-37	1	Washer-Flat
15	109530	1	Nut-Hex Palnut
16	9202594	1	Washer
17	102138	1	ASM-Switch
17:1	102950	1	Washer
17:2	113179	2	Nut
18	111216	1	ASM-Switch
18:1	101884	2	Nut

Ref. No.	Part No.	Qty.	Description
18:2	9201604	2	Washer-Lock
19	9202624	1	Washer-Flat
20	114825	1	Pc Board & Schematic
21	115392	1	Control-Throttle



Sheet No. : 14

### Hydraulic Lift System

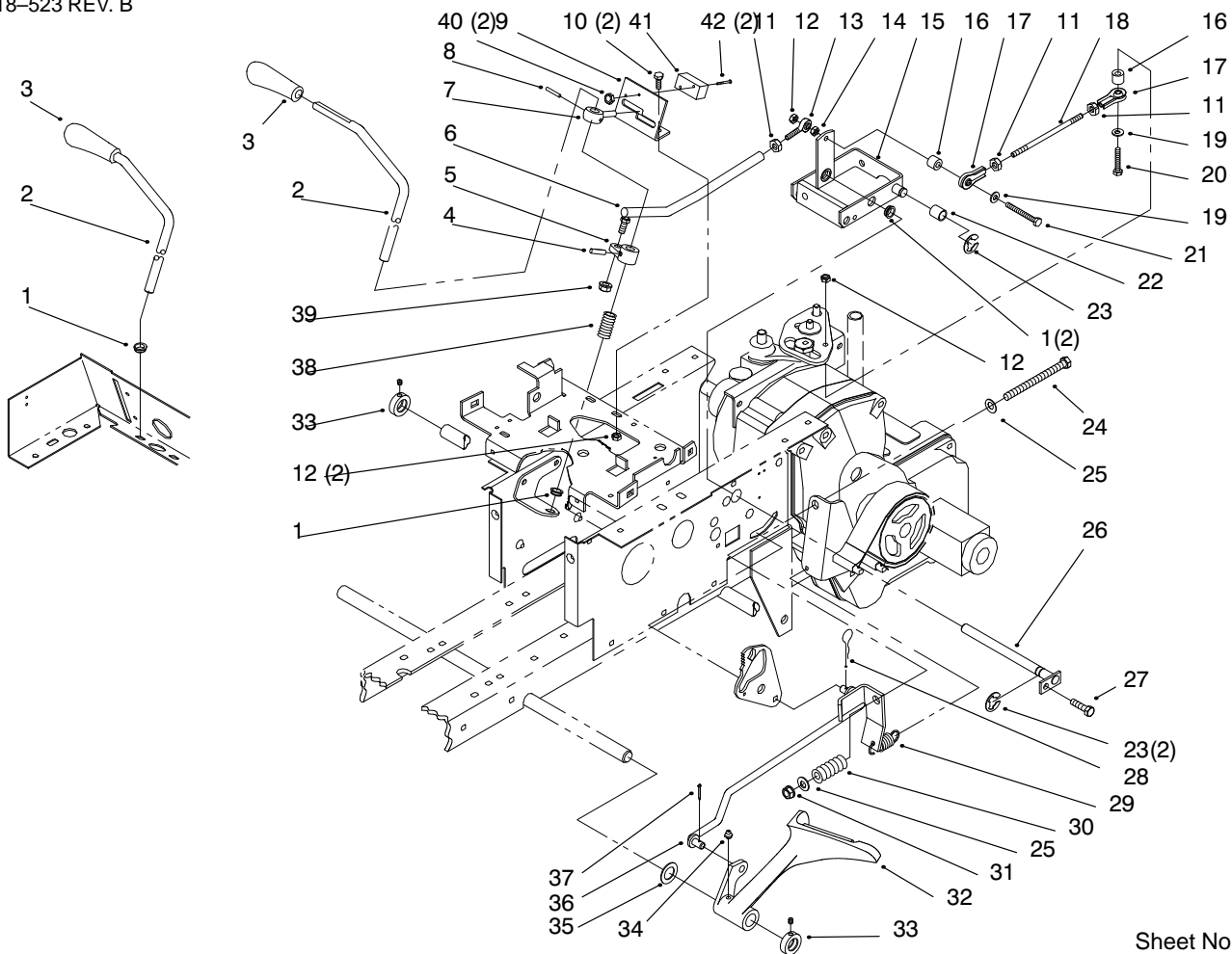
Ref. No.	Part No.	Qty.	Description
1	108365	2	Fitting-Hyd Tube
2	3272-1	1	Pin-Cotter
3	9321204	1	Pin-Clevis
4	114000	1	Valve ASM - Hyd
5	3296-42	3	Nut-Lock
6	5983	1	Bushing
7	933198	1	Pin-Spirol
8	116302	1	Arm-Control
9	116305	1	Bracket-Control
11	321-4	1	Screw-HH
12	78-5670	1	Rod-Lift Control
13	94-3700	1	Knob-Lift
14	3296-29	2	Nut-Lock
15	3256-23	3	Washer-Flat
16	104841	1	Spring
17	78-5640	1	ASM-Valve Actuator Bar
18	106267	1	Grommet
19	110125	1	Hose ASM-Hydraulic
20	9329974	1	Pin-Clevis
21	3272-11	1	Pin-Cotter
22	119340	1	Cylinder ASM
23	9202324	1	Washer
24	101757	1	Spacer
25	110124	1	Hose ASM-Hydraulic

Ref. No.	Part No.	Qty.	Description
26	321-11	2	Screw-HH
27	102628	1	Fitting-Hyd Tube
28	86-9290	1	Tube ASM-Hyd Return
29	86-9280	1	Tube ASM-Hyd Pressure



**Part Identified in illustration but not in part list are not used on this model**

3318-523 REV. B

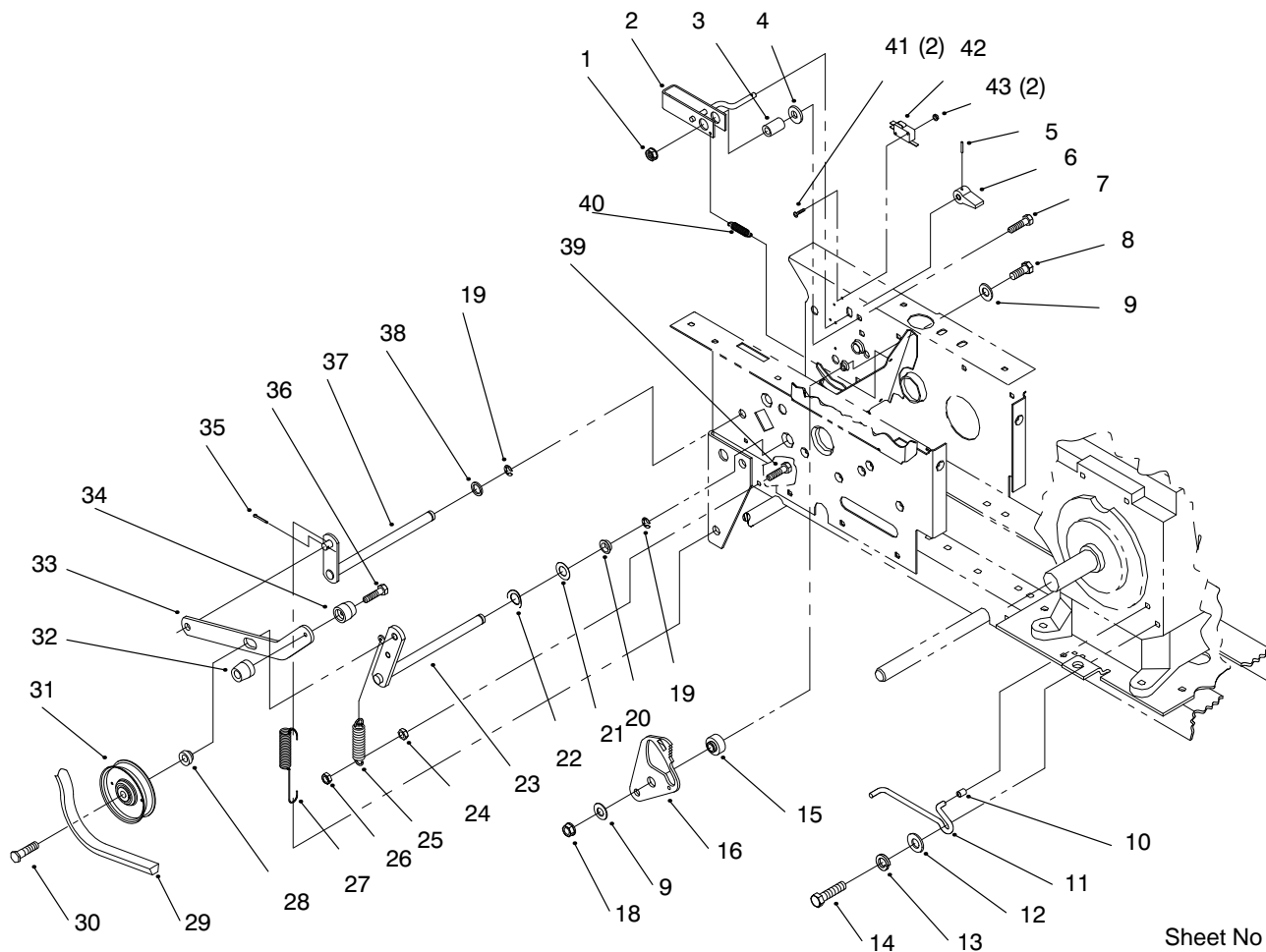


Sheet No.: 16

## Hydro Controls, Brake

Ref. No.	Part No.	Qty.	Description
1	5983	A/R	Bushing
1	5983	3	Bushing
2	78-5660	1	Rod-Motion Control
3	94-3728	1	Knob
4	933198	1	Pin-Spirol
5	116321	1	Arm-Control
6	116324	1	Rod & Balljoint ASM
7	118660	1	Guide-Control
8	32121-94	1	Pin-Spirol
9	78-5631	1	Bracket-Control
10	321-4	2	Screw-HH
11	3220-1	3	Nut-Hex
12	3296-42	4	Nut-Lock
13	116407	1	Rod End
14	3217-5	1	Nut-Hex
15	113454	1	ASM-Cam Control
16	100304	2	Bearing-Cam Roller
17	110189	2	Rod End ASM
18	108904	1	Rod-Thd
19	3256-22	2	Washer-Flat
20	321-9	1	Screw-HH
21	9114584	1	Screw-HH
22	100656	1	Bearing-Cam Return
23	32120-47	3	Ring-Retaining
24	323-23	1	Screw-HH
25	3256-24	2	Washer-Flat

Ref. No.	Part No.	Qty.	Description
26	108496	1	ASM-Rod Cam Pivot
27	9266944	1	Screw-HH
28	9335044	1	Hairpin
29	103125	1	Spring-Extension
30	108680	1	Spring-Compression
31	3296-39	1	Nut-Lock
32	94-3707	1	Pedal-Brake
33	111383	2	Collar W/Set Screw
33:1	3245-32	2	Screw-Set
34	302-5	1	Fitting-Grease
35	1278	1	Washer-Shim
36	109372	A/R	ASM-Brake Rod
36	94-6654	1	Rod
37	3272-10	1	Pin-Cotter
38	101853	1	Spring-Compression
39	3296-4	1	Nut-Lock
40	9157324	2	Nut-Lock
41	115230	1	Switch-Clutch
42	9109484	2	Screw-Phcr



Sheet No. : 17

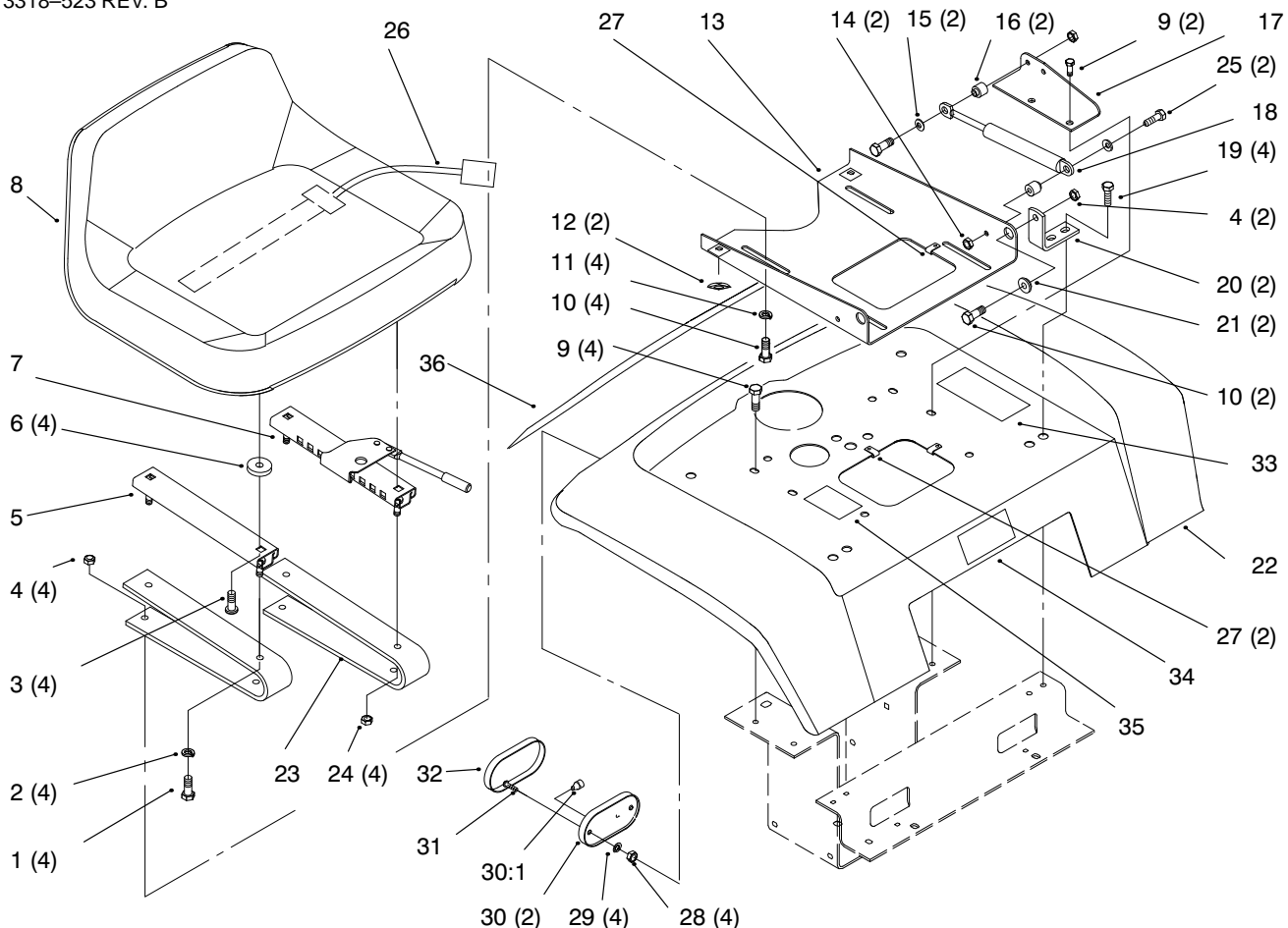
## Hydro Drive

Ref. No.	Part No.	Qty.	Description
1	102809	1	Nut-Hex Lock
2	78-8500	1	ASM-Parking Brake Pawl
3	102025	1	Spacer
4	9202414	1	Washer-Flat
5	933135	1	Pin-Spirol
6	118860	1	Knob-Parking Brake
7	323-9	1	Screw-HH
8	323-8	1	Screw-HH
9	3256-4	2	Washer-Flat
15	108717	1	Spacer-Cam Plate
16	108716	1	Plate-Neutral Cam
18	3296-39	1	Nut-Lock
19	32120-47	1	Ring-Retaining
20	7879	1	Bushing
21	3765	1	Washer-Shim
22	114823	1	Washer-Curved Spring
23	78-6020	1	ASM-Idler Arm
24	3217-5	1	Nut-Hex
25	107938	1	Spring-Extension
26	32146-17	1	Nut-Hex Lock
29	114895	1	Belt-Hydro Drive
30	323-8	1	Screw-HH
31	112791	1	Pulley-Idler
39	321-6	1	Screw-HH

Ref. No.	Part No.	Qty.	Description
40	83-2820	1	Spring-Extension
41	9109482	2	Screw-Phcr
42	111332	1	Switch-Interlock
43	9157324	2	Nut-Lock

**Part Identified in illustration but not in part list are not used on this model**

3318-523 REV. B



Sheet No.: 21

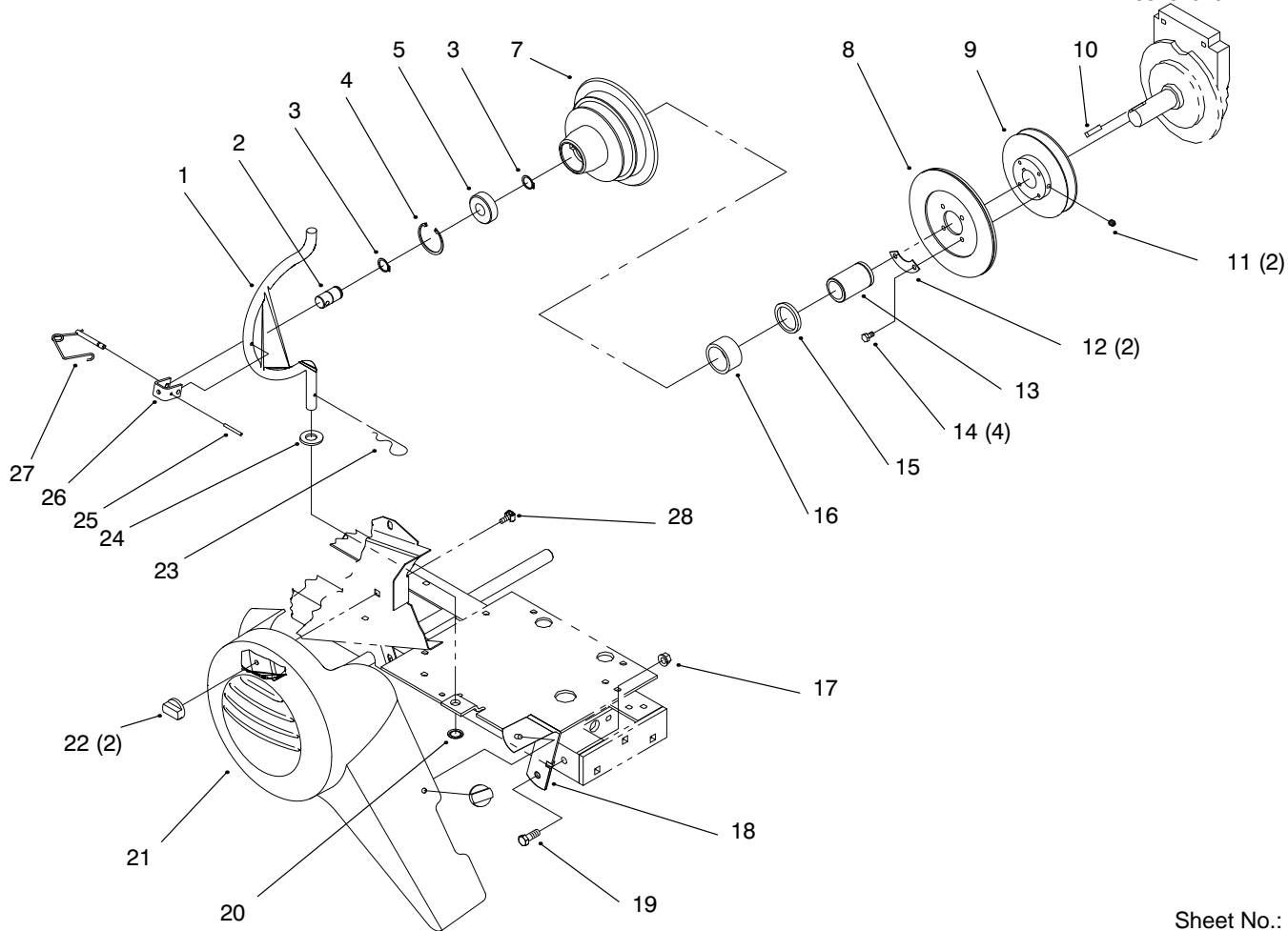
## Fender, Seat

Ref. No.	Part No.	Qty.	Description
3	910865	4	Screw
4	3296-29	6	Nut-Lock
5	114265	1	Slide-Seat
6	109989	4	Spacer
7	114264	1	Adjuster-Seat
8	94-3719	1	Seat
9	9266944	4	Screw-HH
10	322-4	6	Screw-HH
11	3256-23	4	Washer-Flat
12	111071	2	Bumper-Rubber
13	78-2990	1	Plate-Seat Pivot
14	3296-42	2	Nut-Lock
15	3256-22	2	Washer-Flat
16	114344	2	Spacer
17	114345	1	Bracket-Gas Spring
18	114343	1	Spring-Gas
19	9266974	4	Screw-HH
20	105524	2	Bracket-Pivot
21	105503	2	Bushing
22	94-3722-01	1	Fender
23	114263	2	Spring-Seat
24	3296-29	4	Nut-Lock
25	321-8	2	Screw-HH
26	38-1420	1	Switch-Seat
27	3023	3	Clip
28	3296-27	4	Nut-Lock

Ref. No.	Part No.	Qty.	Description
29	3254-1	4	Washer-Lock
30	105202	2	Base-Light
31	3250-31	4	Screw-Phcr
32	112564	1	Lens-Light

Part Identified in illustration but not in part list are not used on this model

3318-523 REV. B



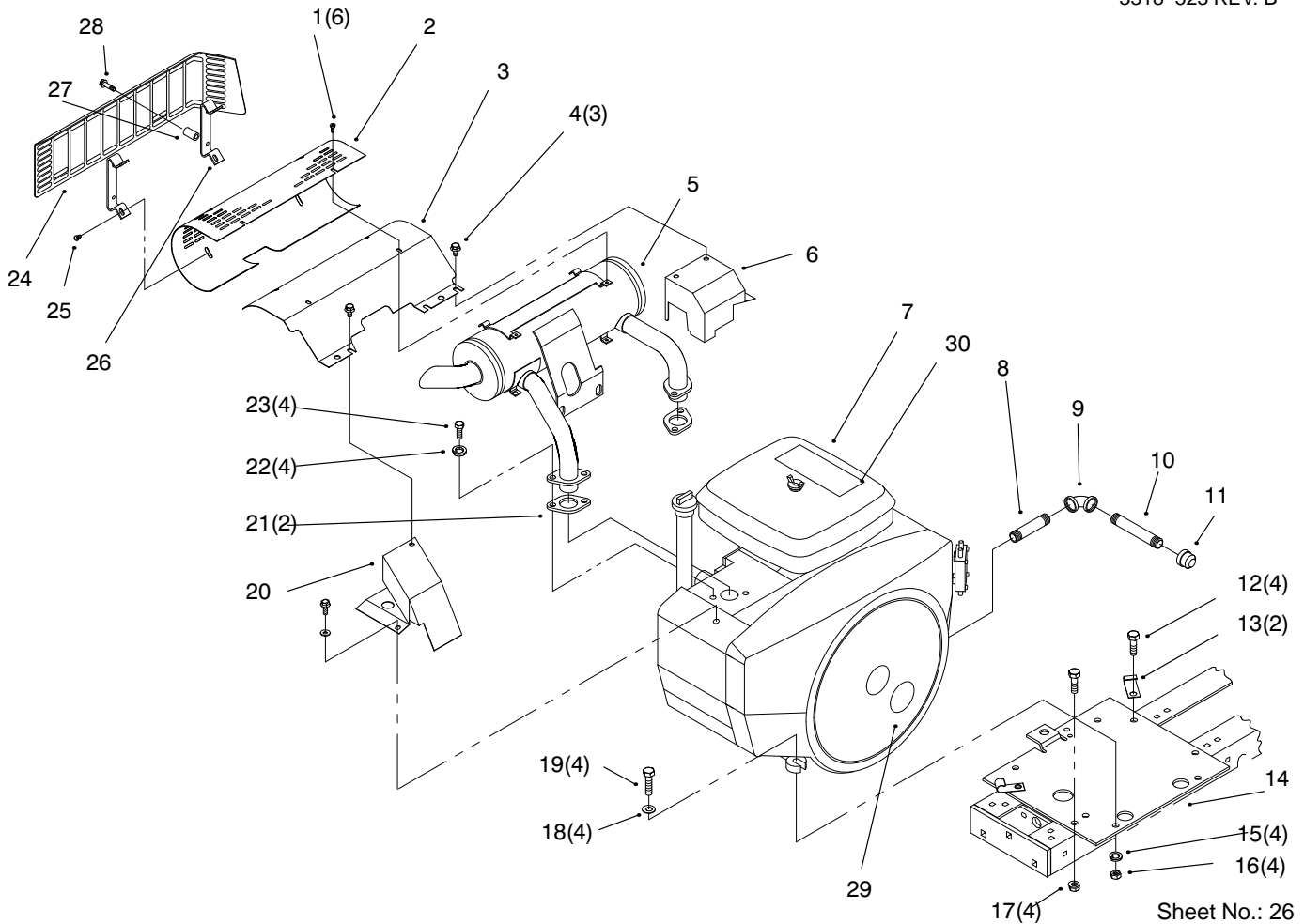
Sheet No.: 22

## PTO Clutch Pulley

Ref. No.	Part No.	Qty.	Description
1	113108	1	Rod-PTO Housing
2	102872	1	Shaft-PTO
3	32120-72	2	Ring-Retaining
4	32120-62	1	Ring-Retain
5	109842	1	Bearing-Ball
7	103478	1	Housing-Clutch
8	114881	A/R	ASM-PTO Clutch Plate
8	94-6650	1	ASM-Plate
9	7443	1	Pulley-Engine
10	105453	1	Key-Sq
11	3246-2	2	Screw-HSH Set
12	6659	2	Retainer
13	6658	1	Race-Bearing
14	9080026	4	Screw-Lock
15	6663	1	Seal-Oil
16	6662	1	Bearing-Needle
17	32128-40	1	Nut-Lock
18	94-3726	1	Bracket
19	323-6	1	Screw-HH
20	106695	1	Ring-Push On
21	94-3704	1	Belt Cover-PTO
22	94-3735	2	Nut-Wing
23	9335064	1	Hairpin
24	3256-27	1	Washer-Flat
25	933274	1	Pin-Spirol

Ref. No.	Part No.	Qty.	Description
26	113107	1	Clevis
27	111314	1	ASM-Pin
28	94-3729	1	Retainer-Bolt





Sheet No.: 26

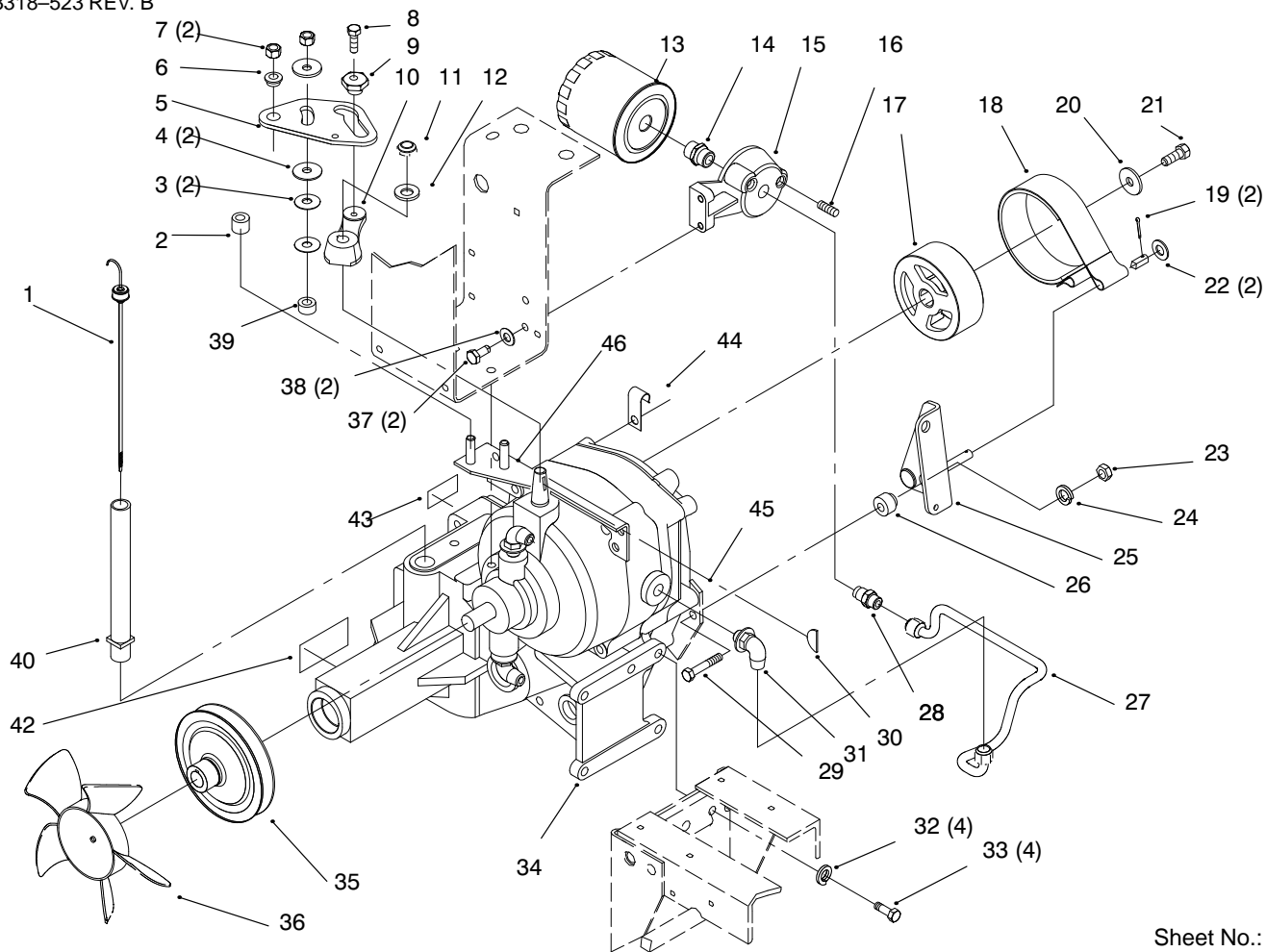
## Engine

Ref. No.	Part No.	Qty.	Description
1	114888	6	Screw
2	94-3737	1	Shield-Heat
3	94-1803	1	Baffle-Deflector
4	12-3270	3	Screw-HH
5	116471	1	Muffler
6	114216	1	ASM-Exh Cover Rear
7	94-1810	1	Engine-Onan
8	114636	1	Nipple
9	114764	1	Elbow
10	114763	1	Nipple
11	288-4	1	Cap-Pipe
12	323-7	4	Screw-HH
13	8830	2	Retainer-"j"
14	116609	1	Plate-Engine
15	3253-21	4	Washer-Spring Lock
16	3217-7	4	Nut-Hex
17	3296-39	4	Nut-Lock
18	3256-24	4	Washer-Flat
19	323-8	4	Screw-HH
20	114215	1	ASM-Exh Cover Front
21	57-9210	2	Gasket-Manifold
22	3253-4	4	Washer-Lock
23	322-3	4	Screw-HH
24	94-9700-03	1	Shield-Heat
25	32144-28	4	Screw-Phcr TAP
26	93-9287-03	2	Bar-Guard

Ref. No.	Part No.	Qty.	Description
27	94-9701	4	Spacer
28	32144-110	4	Screw-HWHTF
29	118530	1	Name Plate-Toro Logo
30	118540	1	Decal-Power Plus 16

**Part Identified in illustration but not in part list are not used on this model**

3318-523 REV. B



Sheet No.: 28

## Transmission

Ref. No.	Part No.	Qty.	Description
1	110768	1	Dipstick
2	108326-03	1	Spacer-Pivot
3	100365	2	Washer-Spring Disc
4	100305	2	Washer-Friction
5	108333	1	Plate- Speed Control Cam
6	100309	1	Bushing-Cam Pivot
7	108881	2	Nut-Hex
8	9080196	1	Screw-HH
9	106661	1	Cam-Eccentric
10	108325	1	Arm-Speed Control
11	3296-45	1	Nut
12	3256-26	1	Washer-Flat
13	79-5270	1	Filter-Oil
14	5991	1	Fitting-Filter
15	108323	1	Base-Filter
16	281-10	1	Plug-Pipe
17	106719	1	Drum-Brake
18	109371	1	Brake Band
19	3272-6	2	Pin-Cotter
20	2844	1	Washer-Flat
21	3235-22	1	Screw-HH Lock
22	3256-24	2	Washer-Flat
23	3296-39	1	Nut-Lock
24	3256-4	1	Washer-Flat
25	78-7740	1	ASM-Brake Pivot Arm

Ref. No.	Part No.	Qty.	Description
26	109356	1	Bushing-Brake Pivot
27	79-5020	1	Tube Cmplt- Flatr To Pump
28	102628	1	Fitting-Hyd Tube
29	323-9	1	Screw-HH
30	3257-24	1	Key-Woodruff
31	108365	1	Fitting-Hyd Tube
32	3253-21	4	Washer-Spring Lock
33	323-7	4	Screw-HH
34	93-9814	1	ASM-Transaxle
35	108316	1	Pulley-Hydro
36	108393	1	Fan-Hydro
37	322-3	2	Screw-HH
38	3253-4	2	Washer-Lock
39	108327	1	Spacer-Pivot
40	106448	1	Nipple-Trans. Filler
42	88-2790	1	Decal-Danger
43	94-1834	1	Decal-Unidrive
44	8830	1	Retainer-J
45	109367	1	Plate
46	108329	1	Plate Asm



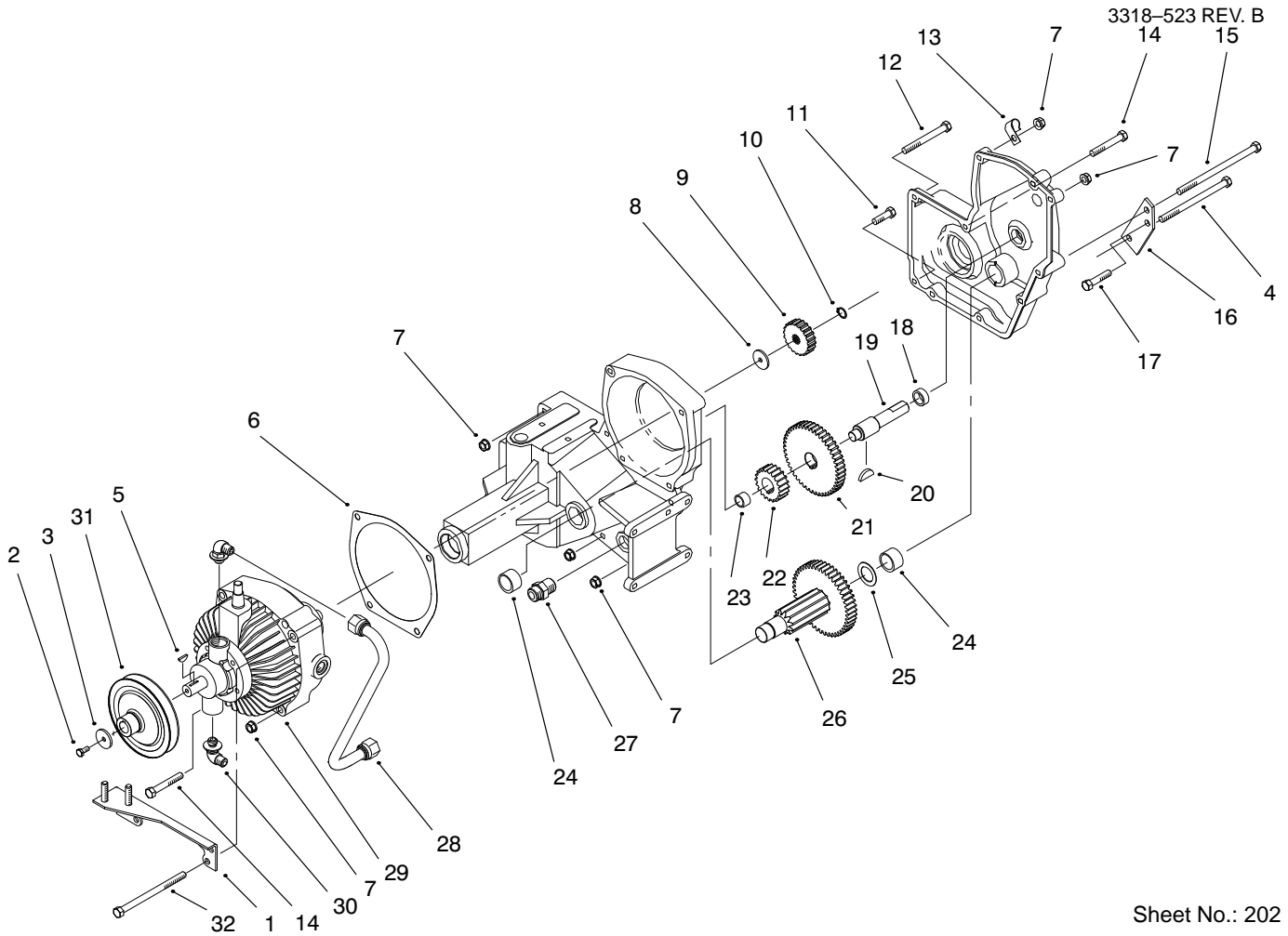












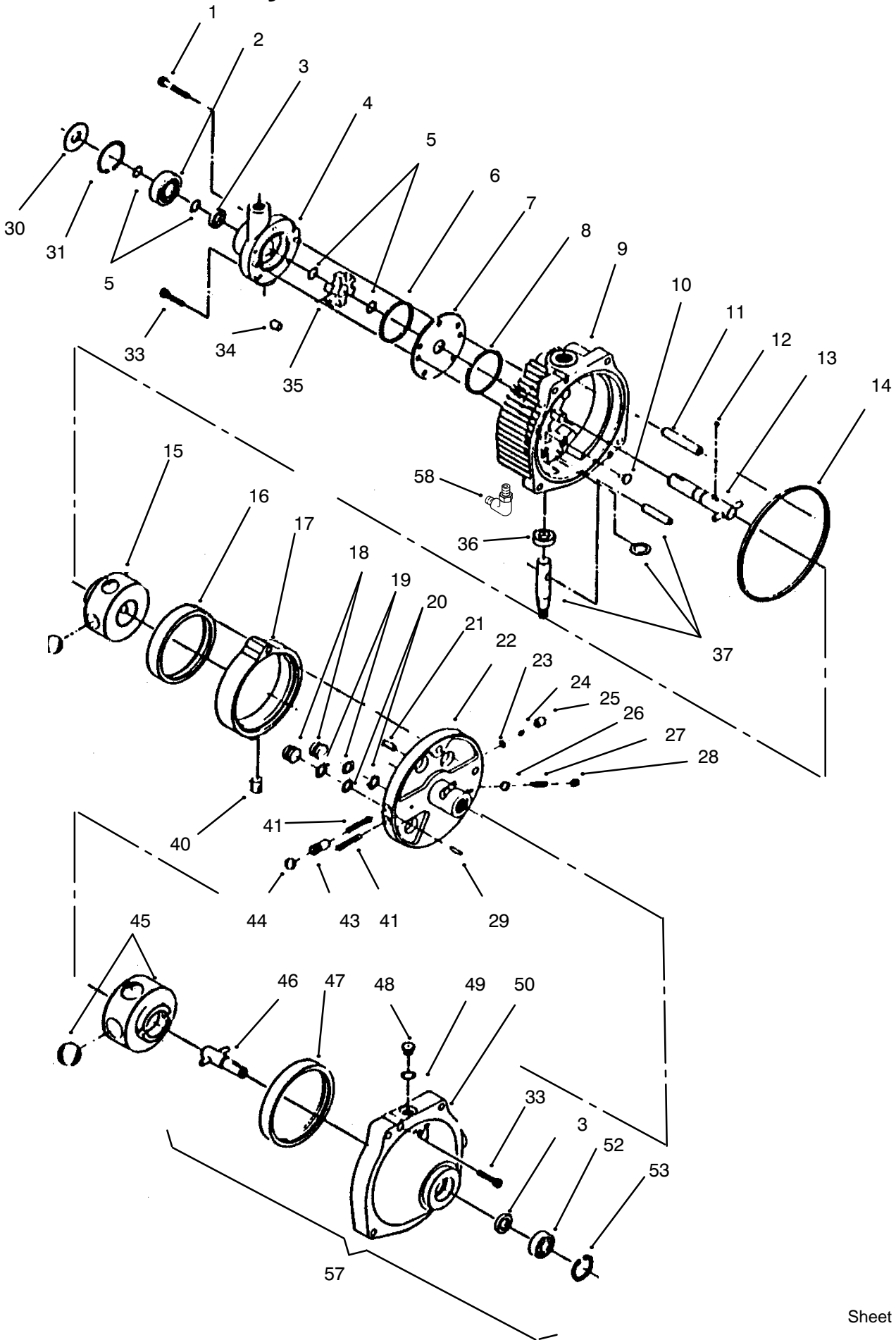
Sheet No.: 202

## Hydrostatic Transmission (Continued)

Ref. No.	Part No.	Qty.	Description
1	108329	1	ASM-Control Plate
1:1	108328	1	Plate
1:2	6718	2	Screw-Weld
2	9080026	1	Screw-Lock
3	103995	1	Washer
4	323-25	3	Screw-HH
5	937089	1	Key-Woodruff
6	108319	1	Gasket-Pump & Motor
7	3296-39	6	Nut-Lock
8	108366	1	Spacer-Drive Gear
9	109751	1	Gear-20t
10	32120-64	1	Ring-Retaining
11	9080356	1	Screw-HH
12	323-15	2	Screw-HH
13	8830	1	Retainer-”j”
14	9080406	2	Screw-HH
15	323-26	1	Screw HH
16	109367	1	Bracket-Brake
18	7956	1	Washer-Thrust
19	109370	1	Shaft-Brake
20	937099	1	Key
21	109752	1	Gear-46t
22	109742	1	Gear-20t
23	1518	1	Needle Brg
24	1532	2	Bearing-Needle
25	9547	1	Washer-Thrust

Ref. No.	Part No.	Qty.	Description
26	109703	1	M-Gear (Press)
26:1	101887	1	Gear-46t
26:2	101625	1	Pinion Shaft
27	108364	1	Fitting-Hyd Tube
28	111217	1	Tube Cmplt-Suction
29	92-9848	1	Trans-Hydro
30	108365	1	Fitting-Hyd Tube
31	108316	1	Pulley-Hydro

# Eaton Hydrostatic Transmission #110-062



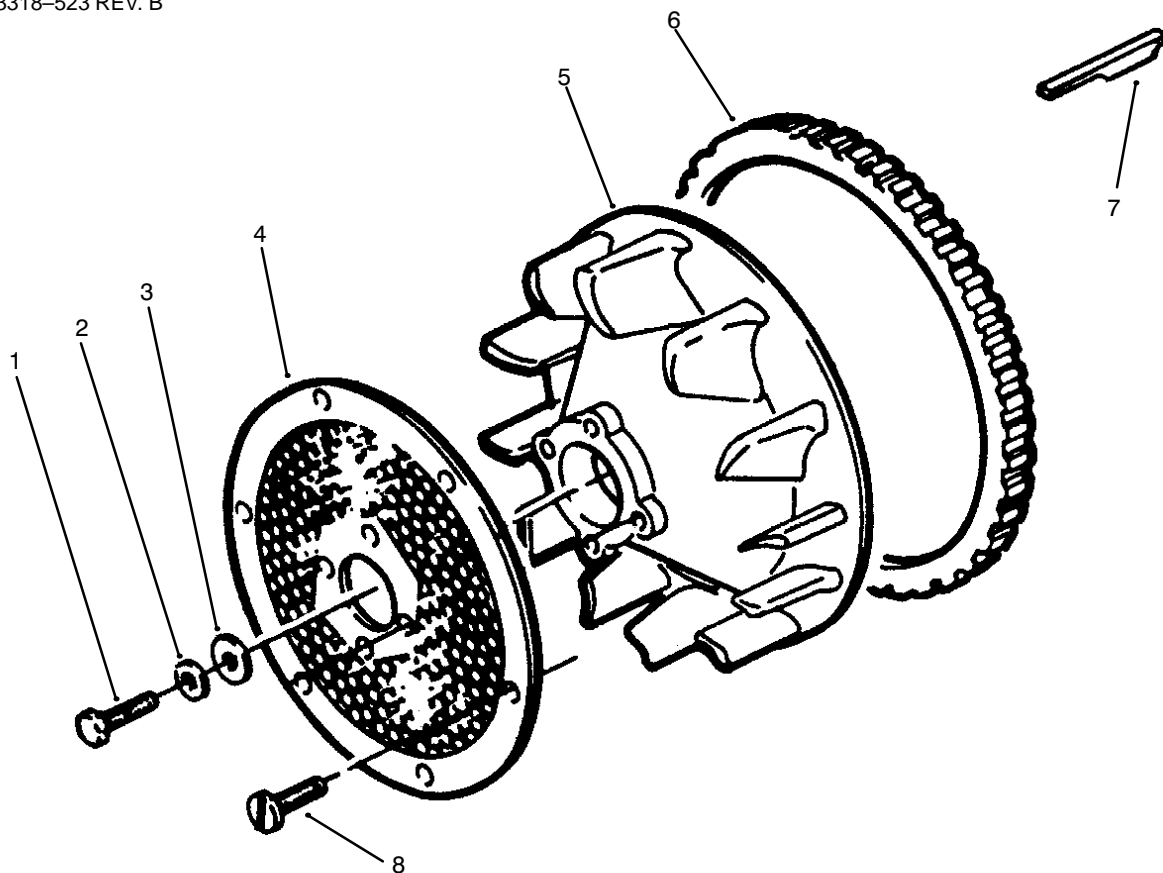
# Eaton Hydrostatic Transmission #110-062

Ref. No.	Part No.	Qty.	Description	Ref. No.	Part No.	Qty.	Description
1	56-2800	1	Screw-HH Socket				
2	56-2810	1	Bearing-Ball				
3	56-2820	2	Seal-Oil				
4	112637	1	ASM-Pump				
5	56-3090	4	Ring-Retaining				
6	56-2850	1	Ring-Seal				
7	56-2860	1	Plate-Pump				
8	56-2870	1	Ring-Seal				
9	112641	1	ASM-Cover				
10	56-2880	2	Button				
11	56-2890	1	Pin-Dowel				
12	56-2900	1	Pin-Drive				
13	56-2910	1	Shaft-Input				
14	56-2920	1	Ring-Seal				
15	56-2930	1	Rotor/Ball-Pump				
16	113136	1	Race-Pump				
17	93-9810	1	Ring-Cam				
18	56-2950	2	Piston				
19	56-2960	2	Ring-Backup				
20	56-2970	2	O-Ring				
21	56-2980	1	Pin-Coil				
22	56-2990	1	ASM-Pintle				
23	56-3000	2	Ring-Retaining				
24	56-3010	2	Ball-.313 Dia				
25	56-3020	2	Body-Valve				
26	56-3030	1	Ball-.438 Dia				
27	56-3040	1	Spring-Valve				
28	56-3050	1	Plug-Valve				
29	56-3060	1	Pin-Dowel				
30	112652	1	Shield-Grass				
31	112653	1	Ring-Retaining				
33	56-3100	6	Screw-Socket Hd				
34	56-3110	6	Roller				
35	56-3120	1	Carrier				
36	56-3130	1	Seal-Oil				
37	56-3140	1	Kit-Shaft				
40	56-3170	1	Insert-Ring				
41	56-3180	1	Spring-Valve				
43	56-3200	2	Body-Valve				
44	56-3210	2	Ball-.625 Dia				
45	56-3220	1	Rotor/Ball-Motor				
46	56-3230	1	Shaft-Output				
47	56-3240	1	Race-Motor				
48	56-3250	1	ASM-Plug				
49	56-3260	1	O-Ring				
50	93-9811	1	Body				
52	56-3280	1	Bearing-Ball				
53	56-3290	1	Ring-Retaining				
*55	56-3310	1	Kit-Seal Incl.3 6 14 12 19 20 49				
56	56-2940	1	ASM-Ring				
57	93-9812	1	ASM-Body				
58	93-9813	1	Fitting-Hydraulic				

\* Not Illustrated







Sheet No.: 403

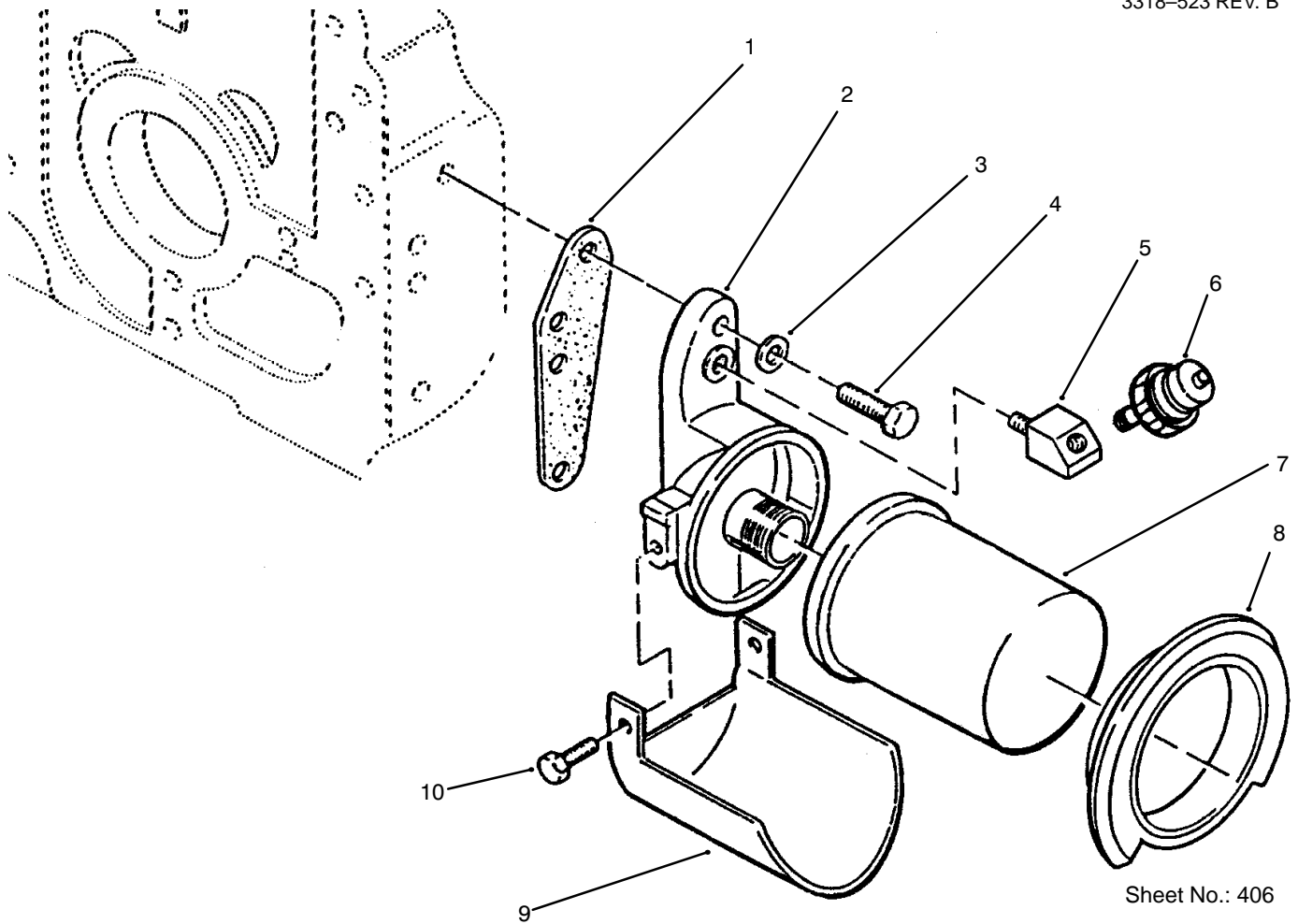
### Flywheel

Ref. No.	Part No.	Qty.	Description
1	57-8150	1	Screw-Cap Hex Hd
2	82-1320	1	Washer-Flat
3	59-0810	1	Washer-Flat
4	79-6440	1	Screen-Air Inlet
5	71-5920	1	Flywheel Incl 6
6	57-8180	1	Gear-Ring
7	71-6190	1	Key-Flywheel
8	71-6340	6	Spring-Compression

Ref. No.	Part No.	Qty.	Description







Sheet No.: 406

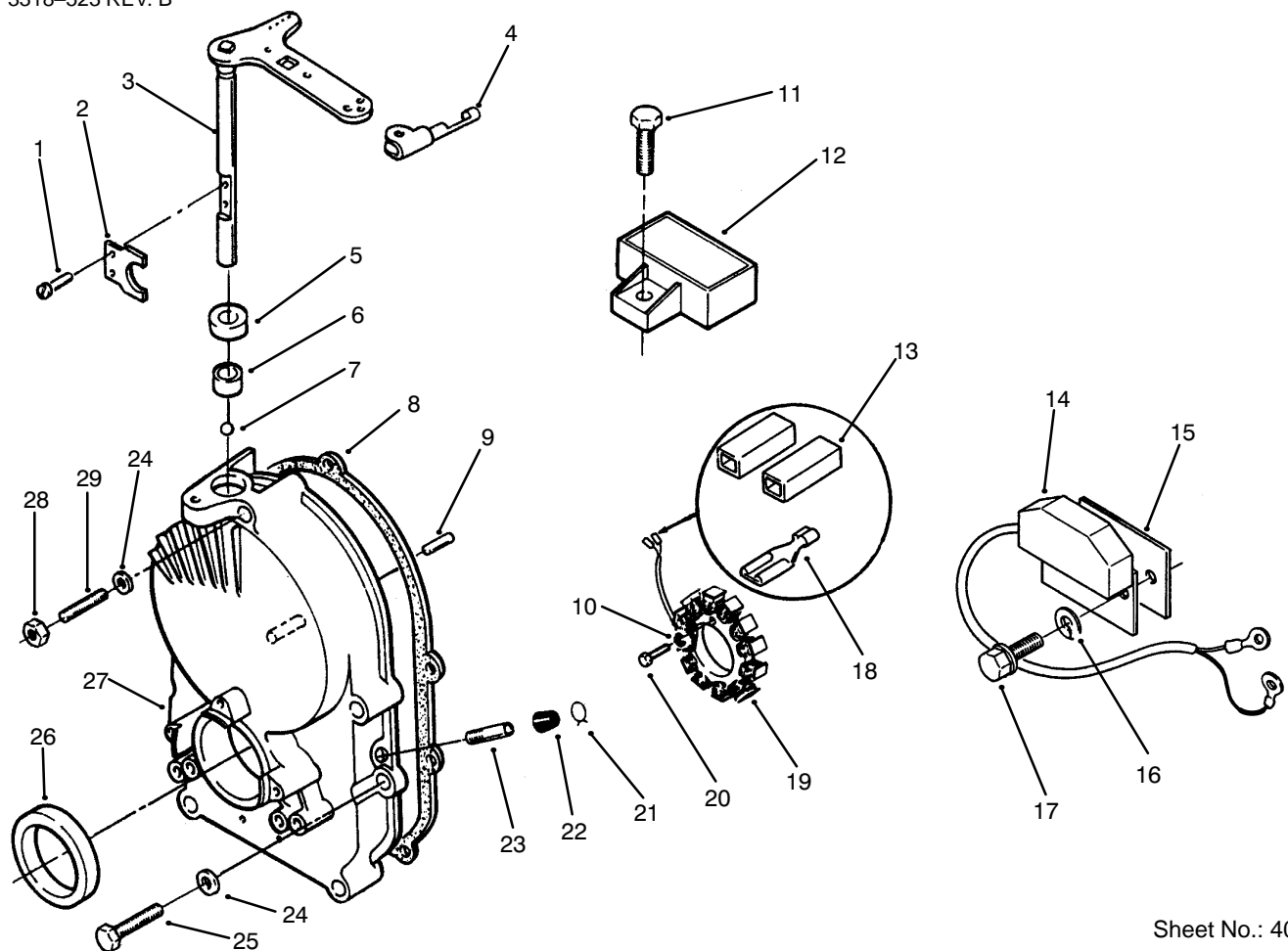
## Oil Filter

Ref. No.	Part No.	Qty.	Description
1	79-6470	1	Gasket-Adapter
2	82-0500	1	Adapter-Oil Filter
3	57-9750	2	Washer-Flat
4	NN10373	2	Screw-Cap Hex Hd
5	59-0640	1	Elbow-Street 45 Degree
6	94-1845	1	Switch-Pressure
6	94-1845	1	Switch-Pressure
7	NN10143	1	Filter-Oil
8	82-0680	1	Filter-Gasket Oil
9	NN10894	1	Drain-Oil Filter
10	82-1510	2	Screw-Hex Hd

Ref. No.	Part No.	Qty.	Description

Part Identified in illustration but not in part list are not used on this model

3318-523 REV. B



Sheet No.: 407

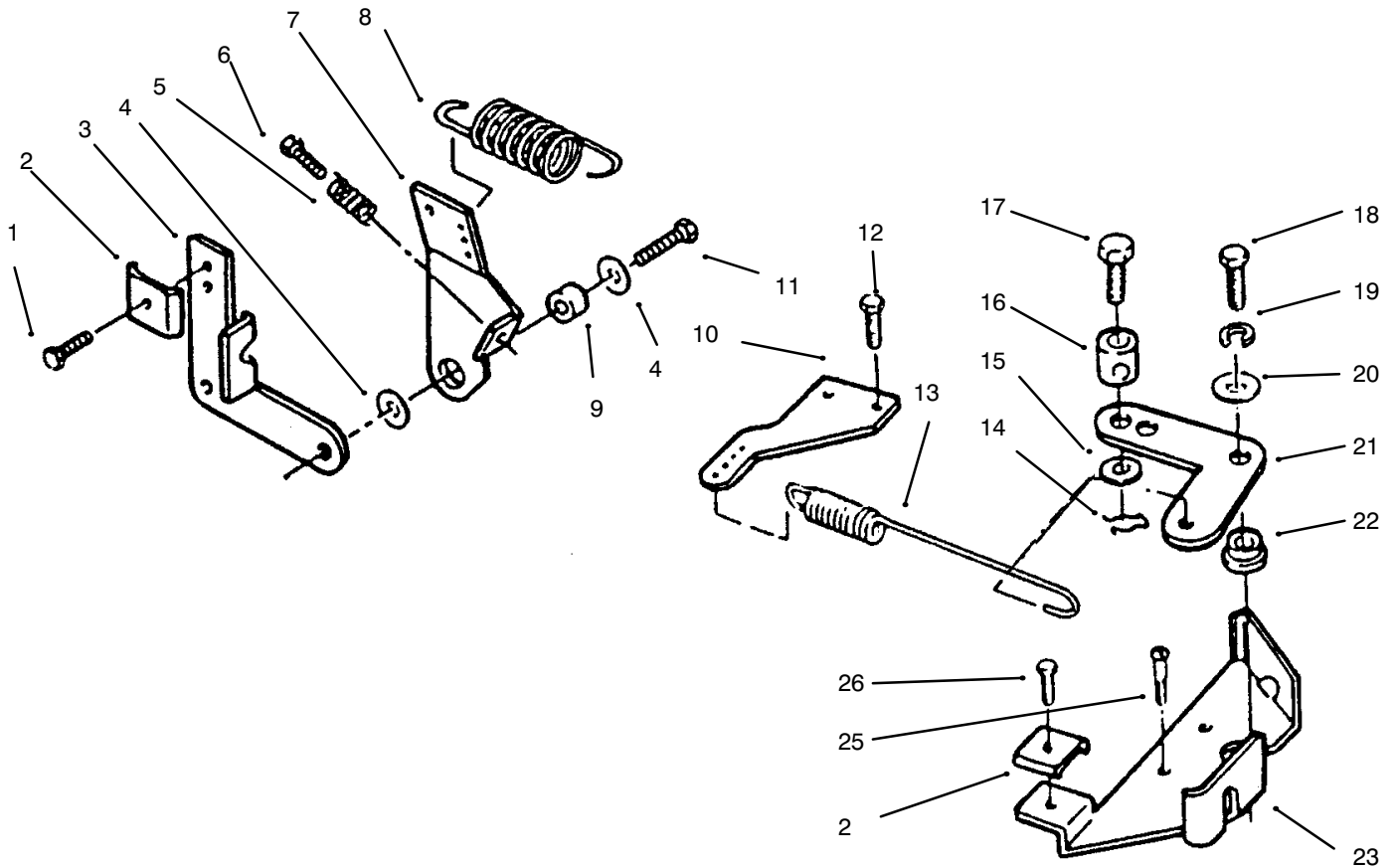
## Gear Case & Ignition Controls

Ref. No.	Part No.	Qty.	Description
1	59-0950	2	Screw-Mach Pan Hd
2	59-0420	1	Yoke-Governor
3	NN10826	1	Shaft & Arm Governor
4	94-6680	1	Clip-Retaining
5	57-9570	1	Seal-Oil
6	57-9650	1	Bearing-Governor Shaft
7	57-9630	1	Bearing-Ball Gov Shaft
8	71-6360	1	Gasket-Mntg
9	59-0740	1	Pin-Dowel
10	3253-2	3	Washer-Lock #10
11	59-1080	1	Screw-Cap Flg Hd
12	57-9430	1	Regulator-Voltage 20 Amp
13	82-1000	2	Body-Term CoNN Kit
14	71-6380	1	Control-Ignition
15	71-6410	1	Insulator-Ignition
16	82-1660	2	Washer-Lock
17	NN10394	2	Screw-Hex Washer Hd
18	59-0590	2	Terminal-Stator Leads
19	92-0967	1	Stator
20	82-1500	3	Screw-Mach Hex Hd
21	57-9550	1	Clamp-Vacuum Port Cap

Ref. No.	Part No.	Qty.	Description
22	59-0370	1	Cap-Vacuum Port
23	59-0360	1	Tube-Vacuum Port
24	57-9750	5	Washer-Flat
25	NN10545	4	Screw-Hex Hd
26	57-9580	1	Seal-Oil
27	NN10825	1	Kit-Gearcase
28	59-1130	1	Nut-Hex
29	59-0790	1	Stud-Gear Cover







Sheet No.:410

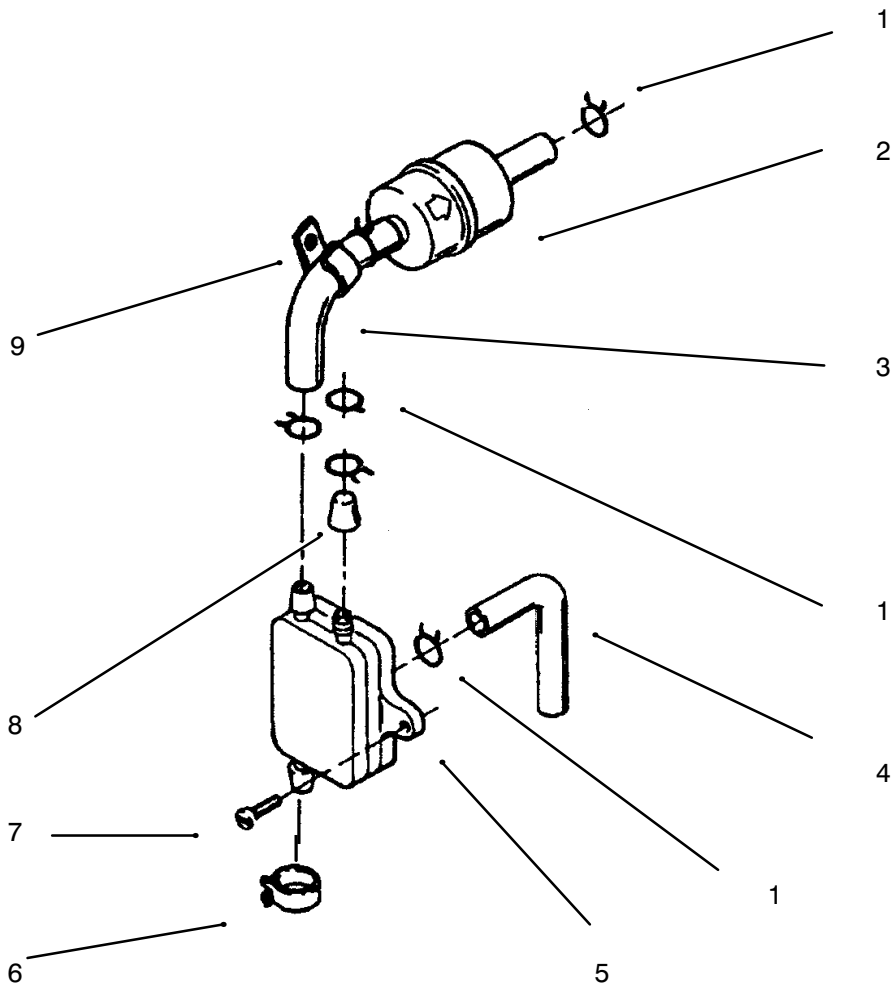
## Governor

Ref. No.	Part No.	Qty.	Description
1	72-3900	1	Screw-Tapping Hex Hd
2	57-9190	2	Clamp-Cable
3	79-6360	1	Bracket-Cable
4	59-0830	2	Washer-Flat
5	59-0430	1	Spring-Idle Setting
6	59-1030	1	Screw-Tapping Hex Hd
7	92-0922	1	Arm-Governor Control
8	57-9100	1	Spring-Governor
9	57-9120	1	Bushing-Control Arm
10	79-6420	1	Adapter-Governor Arm
11	59-1100	1	Screw-Lock Hd
12	NN10403	1	Screw-Self TAP Flg Hd
13	NN10932	1	Spring-Governor
14	59-0720	1	Pin-Cotter
15	201270	1	Washer
16	57-9120	1	Bushing-Control Arm
17	72-3890	1	Screw-Hex Hd
18	82-1370	1	Screw-Hex Hd
19	82-1620	1	Washer-Lock
20	59-0830	1	Washer-Flat
21	201256	1	Link-Governor Control
22	79-6400	1	Bushing-Governor Cont
23	79-6390	1	Bracket-Governor Cont

Ref. No.	Part No.	Qty.	Description
25	201327	1	Screw-Self TAP Flg Hd
26	59-1000	3	Screw







Sheet No.: 413

### Fuel Filter & Pump

Ref. No.	Part No.	Qty.	Description
1	82-1080	6	Clamp-Hose .50" Dia
2	71-5960	1	Filter-Fuel
3	NN10790	1	Line-Fuel 12"
4	NN10302	1	Line-Fuel 7"
5	57-9080	1	Pump-Fuel
6	950154	2	Clamp-Corbin
7	59-1050	2	Screw St Pan Hd
8	NN10211	1	Cap-Fuel Fitting
9	NN10048	1	Clamp

Ref. No.	Part No.	Qty.	Description

**Part Identified in illustration but not in part list are not used on this model**

3318-523 REV. B

**This Page Intentionally Left Blank**

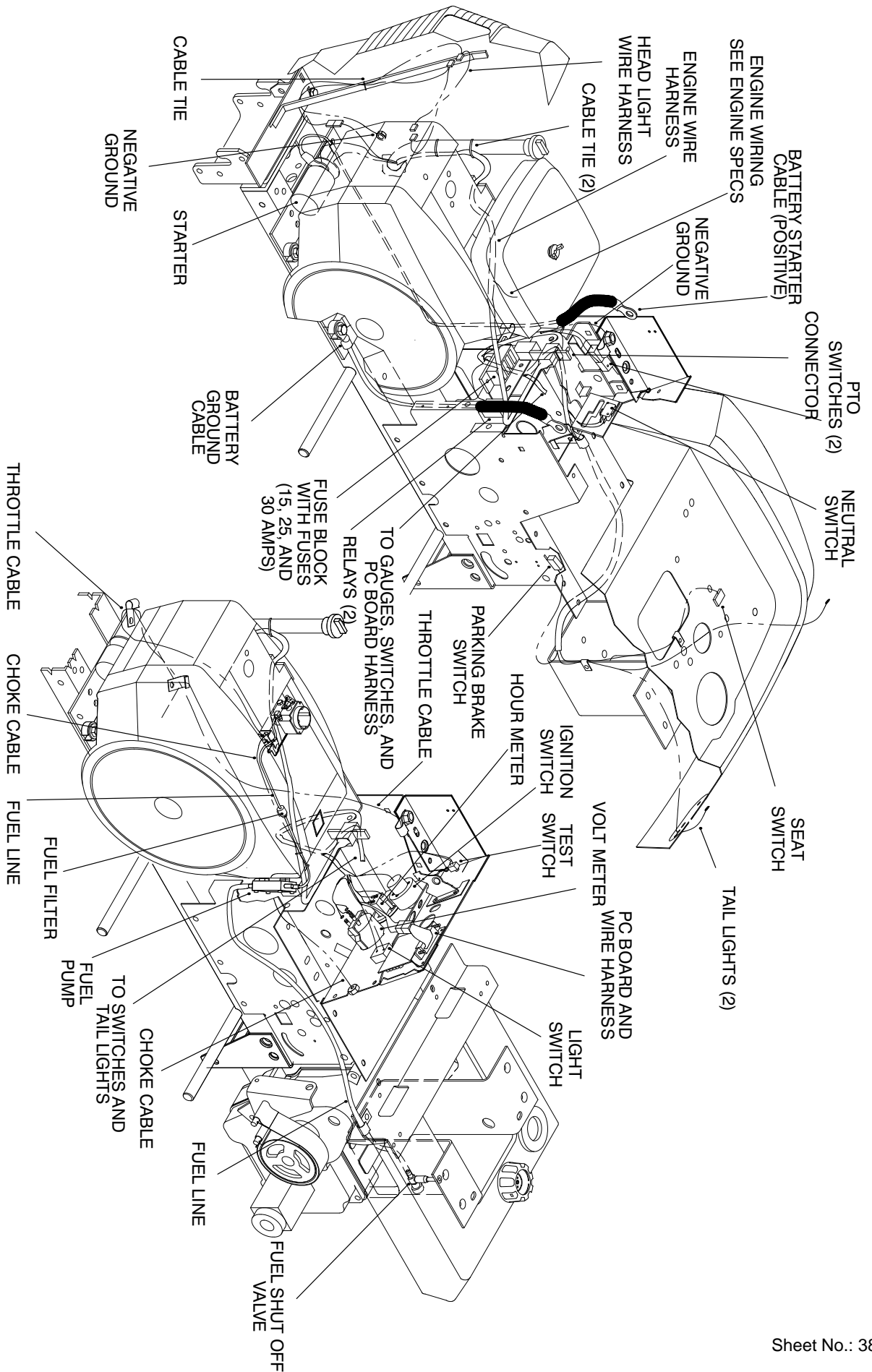


## Engine Cylinder Block

Ref. No.	Part No.	Qty.	Description	Ref. No.	Part No.	Qty.	Description
1	NN10850	1	Block-Cylinder (Short)				.010"
2	57-9760	1	Washer-Flat	43	NN10127	2	Rod W/Bolts & Nut
3	57-8470	1	Plunger-Bypass Valve				.020"
4	59-0280	1	Spring-Bypass Valve	43	NN10128	2	Rod W/Bolts & Nut
5	59-0910	1	Screw-Cap Hex Hd				.030"
6	71-5790	4	Spring-Valve	44	57-8410	4	Bolt-CoNnecting Rod
7	71-5800	4	Washer-Valve Spring	45	71-5780	2	Spring-Clutch
8	NN10082	8	Lock-Valve Spring	46	59-0100	2	Insert-Valve Seat Exh
9	57-8450	4	Tappet-Valve STD	*	59-0110	2	.002" Oversize
*	59-0260	4	.002" Oversize	*	59-0120	2	.005" Oversize
10	82-0540	1	Tube-Breather	*	59-0130	2	.010" Oversize
11	57-8580	1	Baffle-Breather Tube	*	59-0140	2	.025" Oversize
12	82-0530	1	Clamp-Tube	47	57-9790	4	Nut
13	82-0570	1	O-Ring-Cap	48	57-9720	4	Ring-Retaining
14	82-0560	2	Screen-Tube	49	71-6310	2	Pin-Piston
15	82-0550	1	Cap & Valve-Breather	50	92-0905	2	Kit-Ring Piston STD
16	82-1480	1	Screw-TAP Round Hd	*	92-0906	2	.005" Oversize
17	71-5830	4	Cap-Valve	*	92-0907	2	.010" Oversize
18	57-8280	2	Gasket-Cover	*	92-0908	2	.020" Oversize
19	NN10370	2	Screw-Cap Hex Hd	*	92-0909	2	.030" Oversize
20	57-9740	2	Washer-Flat	51	59-0290	1	Tube-Oil
21	NN10821	1	Cover-Valve	52	57-8020	1	Bearing-Crankshaft
22	59-0820	1	Washer-Flat	*	57-8030	1	.010" Undersize
23	71-6180	2	Seal-Valve	*	57-9360	1	.002" Undersize
24	71-6250	2	Guide-Valve	*	57-9800	1	.020" Undersize
*	71-6260	2	Guide-Valve	*	59-0010	1	.030" Undersize
25	57-9690	1	Plug-Welch	53	59-0750	2	Pin Align
26	59-0730	4	Pin-Drive	54	57-8480	1	Pump-Oil
27	57-8010	1	Gasket-Bearing Plate	55	82-1340	2	Washer
28	57-8170	A/R	Shim-Crankshaft .005"	56	82-1370	2	Screw-Hex Hd
29	57-8050	1	Bearing-Crankshaft Rear	57	71-6290	1	Kit-Gasket Complete
*	57-8060	1	.010" Undersize	58	57-8460	1	Kit-Gasket
*	59-0020	1	.002" Undersize	59	57-8000	2	Bearing-Camshaft
*	59-0030	1	.020" Undersize	60	NN10274	1	Switch-High Temp
*	59-0040	1	.030" Undersize	61	NN10924	1	Washer- Lock
30	82-0020	1	Plate-Bearing				
31	57-9590	1	Seal-Oil				
32	59-0880	5	Screw-Cap Flg Hd				
33	3253-5	5	Washer-Lock				
33	82-1310	5	Washer-Flat				
34	3247-4	2	Screw-HS				
35	57-8160	2	Washer-Thrust				
36	59-0050	2	Insert-Valve Seat Intake				
*	59-0080	2	.010" Oversize				
37	71-5770	2	Valve-Intake				
38	57-8330	2	Gasket-Head				
39	59-0180	1	Head-Cylinder RH				
*	71-5810	1	Head-Cylinder LH				
40	57-9770	18	Washer-Flat				
41	59-0900	18	Screw-Cap Hex Hd				
42	82-1800	2	Piston STD INC 48-49				
*	92-0902	2	.010" Oversize				
	92-0903	2	.020" Oversize				
*	92-0904	2	.030" Oversize				
43	NN10125	2	Rod W/Bolts & Nuts STD				
43	NN10126	2	Rod W/Bolts & Nut				

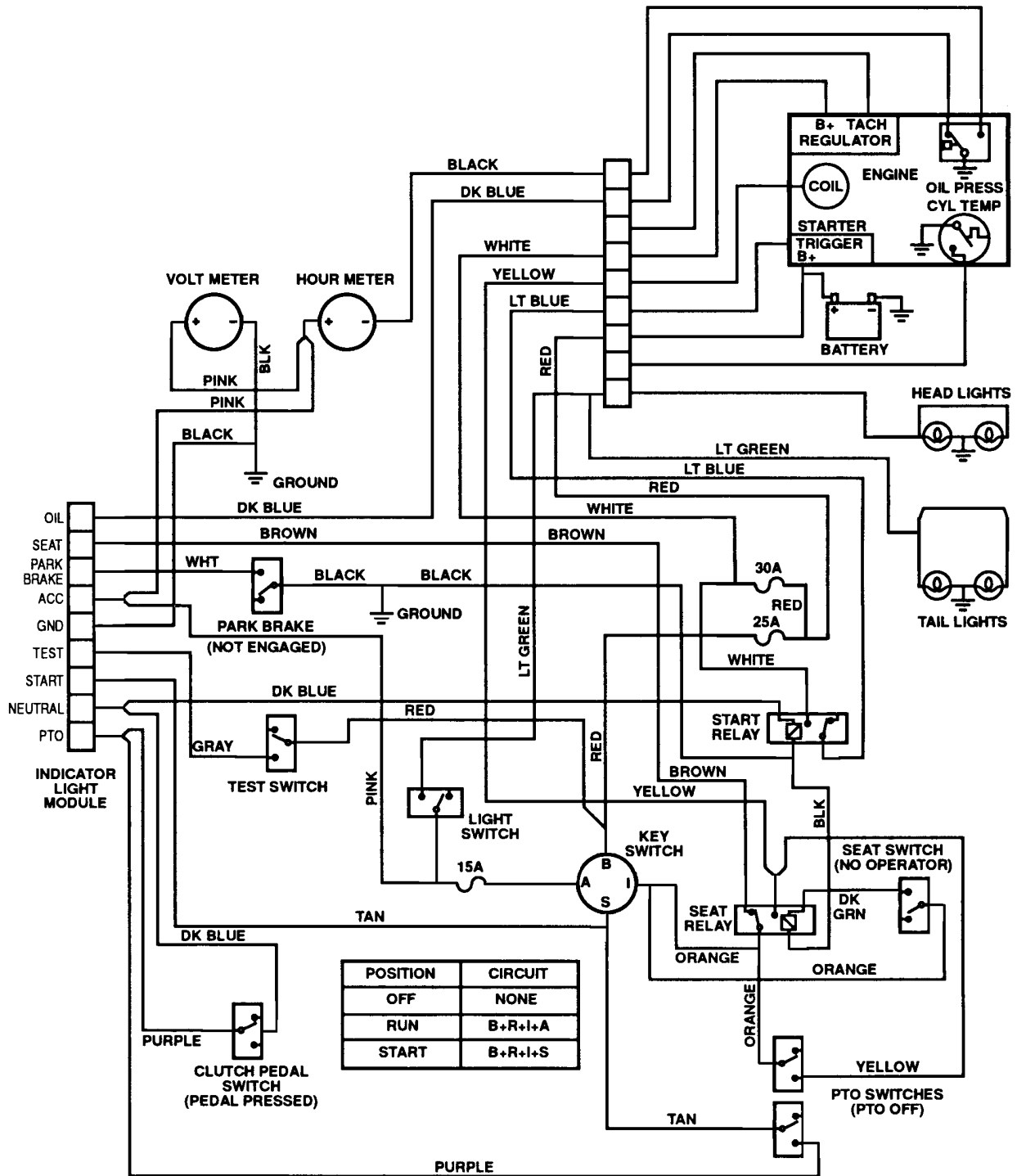
\*Not Illustrated

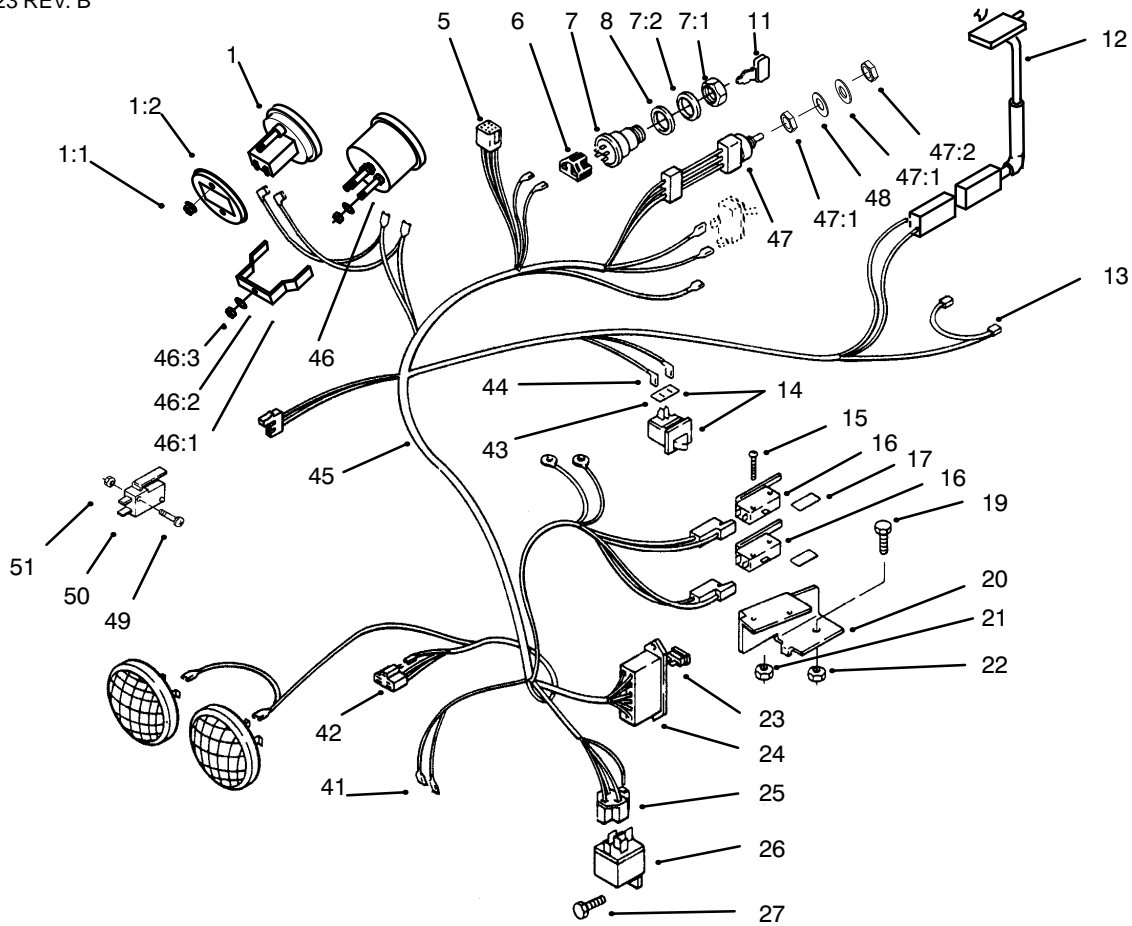
# Wire Harness



## 416-H WIRE HARNESS, CABLE, AND TUBE ROUTING TWIN CYLINDER

# Wire Harness





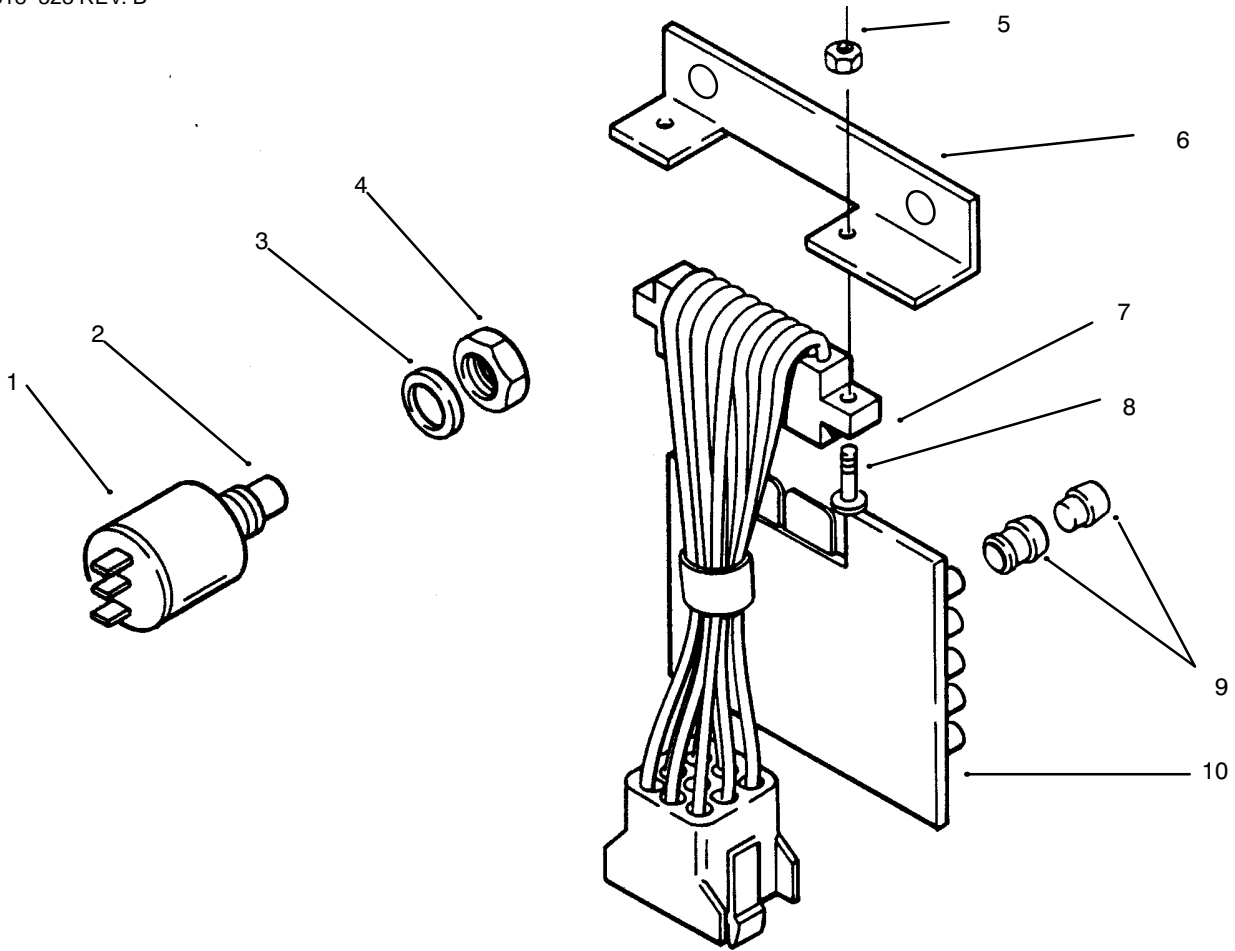
Sheet No.:

## 416-H Wire Harness Attachment & Component's

Ref. No.	Part No.	Qty.	Description
1	94-3723	1	Meter - Hour
1:1	32149-9	1	Nut - Lock
		1	Washer - Lock
1:2	94-1849	1	Retainer - Cup
5	102651	8	Terminal - Female
6	104926	1	Switch - Connector
7	111216	1	Switch - Ignition
7:1	101884	1	Nut - Special
7:2	920104	1	Washer - Intl. T
8	9202624	1	Washer - Special
11	62-7770	1	Key - Ignition,
12	38-1420	1	Switch - Seat
13	6921	1	Terminal
14	103480	1	Switch - Interlock, (Incl. Ref. #43)
15	910478	2	Screw
16	111332	3	Switch - PTO
17	111642	2	Barrier - Switch
19	926671	1	Bolt
20	115411	1	Support - Switch
21	915732	2	Nut
22	9155732	2	Nut
23	109355	1	Fuse 15 Amp
*	109102	1	Fuse 25 Amp
*	NN10277	1	Fuse 30 Amp
24	120930	1	Holder - Fuse
25	518105	1	Terminal
26	116397	1	Relay
27	960152	2	Bolt - Whizlock

Ref. No.	Part No.	Qty.	Description
42	112185	1	Body - Connector
43	110502	1	Shield - Dirt
44	518077	2	Terminal
45	79-3620	1	Wire Harness (Incl. Ref.# 5,6,13, 24, 25 42 &45)
46	79-0060	1	Meter - Volt
46:1	78-0080	1	Bracket - Mounting
46:2	3255-24	1	Washer - Lock
46:3	3217-27	1	Nut
47	102138	1	Switch - Lights
47:1	3255-25	1	Washer - Lock
47:2	321-27	1	Nut
48	9202594	1	Washer
49	910948	2	Screw
50	111332	1	Switch-Parking
51	915732	2	Nut





Sheet No.:

### PC Board & Test Switch

Ref. No.	Part No.	Qty.	Description
1	116796	1	Test Switch
2	117217	1	Switch – Button (Incl. Ref. #2-4)
3	111767	1	Washer
4	111359	4	Nut – Hex
5	915732	2	Nut – Lock
6	112506	1	Bracket
7	116723	1	Harness – Wiring
8	9107562	2	Screw
9	111343	5	Bushing Assembly & Indicator Lens
10	114825	1	PC Board w/Lights

Ref. No.	Part No.	Qty.	Description

# Toro Part Number Index

Part No.	Page No.	Ref. No.	Qty.	Description
1121	7	14	1	Key
1278	2	9	3	Washer-Shim
1278	8	35	1	Washer-Shim
1278	15	14	4	Washer-Shim
1481	2	7	2	Fitting-Grease
1518	21	23	1	Needle Bearing
1532	21	24	2	Bearing-Needle
1538	20	11	1	Needle Bearing
1644	16	7	1	ASM-Drawbar Hitch
2844	14	20	1	Washer-Flat
3023	10	27	3	Clip
3023	18	16	A/R	Clip
3765	9	21	1	Washer-Shim
3765	12	8	1	Washer-Shim
5210	2	17	14	Washer-Shim
5210	15	15	2	Washer-Shim
5618	2	30	1	Ring-Retaining
5618	16	11	2	Ring-Retaining
5638	2	27	1	Axle-Front
5666	12	4	1	Bushing-Nyliner
5979	1	17	2	Bushing-Nyliner
5983	6	6	1	Bushing
5983	8	1	3	Bushing
5983	8	1	A/R	Bushing
5983	12	6	1	Bushing
5991	14	14	1	Fitting-Filter
6216	2	26	1	Pin
6229	7	17	1	Bearing
6397	2	8	1	Bearing-Bronze
6449	20	14	2	Seal-Oil
6472	2	1	1	Bearing-Flanged
6658	11	13	1	Race-Bearing
6659	11	12	2	Retainer
6662	11	16	1	Bearing-Needle
6663	11	15	1	Seal-Oil
6718	21	1:2	2	Screw-Weld
6739	7	5	1	Trunnion
7443	11	9	1	Pulley-Engine
7456	4	10	4	Clamp
7879	9	20	1	Bushing
7896	2	12	1	Washer-Bowed
7956	21	18	1	Washer-Thrust
8616	16	20	2	Spring
8830	7	12	2	Retainer-"j"
8830	13	13	2	Retainer-"j"
8830	16	28	1	Retainer-"j"
8830	18	11	1	Retainer-"j"
8830	19	21	1	Retainer-"j"
8830	21	13	1	Retainer-"j"
9038	16	12	1	Grip
9416	20	13	2	Bearing
9547	21	25	1	Washer-Thrust
100304	8	16	2	Bearing-Cam Roller
100305	14	4	2	Washer-Friction
100309	14	6	1	Bushing-Cam Pivot
100365	14	3	2	Washer-Spring Disc
100656	8	22	1	Bearing-Cam Return
101017	16	15	1	Lock-Hitch
101623	20	6	8	Pinion Gear 11t
101625	21	26:2	1	Pinion Shaft
101707	16	23	1	Lock-Attachment
101711	16	25	1	Plate-Front Hitch

\*Not Illustrated

# Toro Part Number Index (cont.)

Part No.	Page No.	Ref. No.	Qty.	Description
101750	16	19	1	Rod-Latch Pivot
101751	16	27	1	Rod-Lock
101757	6	24	1	Spacer
101850	1	15	1	Rod-Hood Stop
101853	8	38	1	Spring-Compression
101887	21	26:1	1	Gear-46t
101889	20	4	2	Axle Diff Gear
102025	9	3	1	Spacer
102138	5	17	1	ASM-Switch
102628	6	27	1	Fitting-Hyd Tube
102628	14	28	1	Fitting-Hyd Tube
102644	16	3	2	Plate-Hitch
102809	9	1	1	Nut-Hex Lock
102872	11	2	1	Shaft-PTO
102881	1	3	2	Headlamp
103125	8	29	1	Spring-Extension
103125	12	7	1	Spring-Extension
103478	11	7	1	Housing-Clutch
103995	21	3	1	Washer
104841	6	16	1	Spring
104859	12	16	1	Spacer-Link
105061	20	7	1	Gear Diff Bull 43t
105202	10	30	2	Base-Light
105269	16	5	1	Pin-Drawbar Hitch
105316	16	14	2	Cap-Rod
105453	11	10	1	Key-Sq
105503	10	21	2	Bushing
105524	10	20	2	Bracket-Pivot
105763	20	19	2	Hub-Wheel
105797	1	18	2	Ring-Ext Ret
105797	16	18	8	Ring-Ext Ret
105876	20	5	2	Snap Ring
106234	18	1	1	ASM-Fuel Tank
106236	18	18	1	Support-Fuel Tank RH
106267	6	18	1	Grommet
106269	7	9	2	Bearing-Flange
106448	14	40	1	Nipple-Trans. Filler
106522	7	4	1	Chain-Lift
106634	16	8	1	Pin-Tool
106661	14	9	1	Cam-Eccentric
106695	11	20	1	Ring-Push On
106719	14	17	1	Drum-Brake
106826	20	20	2	Washer-Thrust
106948	17	8	1	Tray-Battery
107069	3	16	4	Nut-Speed
107069	4	5	6	Nut-Speed
107374	20	8	4	Washer
107938	9	25	1	Spring-Extension
107951	3	30	1	Bracket-Fender Front
108312	20	22	1	Gasket-Transaxle
108316	14	35	A/R	Pulley-Hydro
108316	21	31	1	Pulley-Hydro
108319	21	6	1	Gasket-Pump & Motor
108323	14	15	1	Base-Filter
108325	14	10	1	Arm-Speed Control
108327	14	39	1	Spacer-Pivot
108328	21	1:1	1	Plate
108329	21	1	1	ASM-Control Plate
108333	14	5	1	Plate-Speed Control Cam
108357	20	12	1	Seal-Oil(
108361	20	15	1	Axle-Rear LH
108362	20	27	1	Axle-Rear RH

\*Not Illustrated

# Toro Part Number Index (cont.)

Part No.	Page No.	Ref. No.	Qty.	Description
108363	20	10	2	Pin-Locating
108364	21	27	1	Fitting-Hyd Tube
108365	6	1	2	Fitting-Hyd Tube
108365	14	31	1	Fitting-Hyd Tube
108365	21	30	1	Fitting-Hyd Tube
108366	21	8	1	Spacer-Drive Gear
108393	14	36	1	Fan-Hydro
108457	4	14	1	Nut-Push On
108464	18	12	1	Support-Fuel Tank LH
108496	8	26	1	ASM-Rod Cam Pivot
108680	8	30	1	Spring-Compression
108716	9	16	1	Plate-Neutral Cam
108717	9	15	1	Spacer-Cam Plate
108881	14	7	2	Nut-Hex
108881	20	2	4	Nut-Hex
108904	8	18	1	Rod-THH
109189	2	16	1	Bearing-Flange
109262	2	13	2	Washer
109356	14	26	1	Bushing-Brake Pivot
109367	21	16	1	Bracket-Brake
109370	21	19	1	Shaft-Brake
109371	14	18	1	Brake Band
109372	8	36	A/R	ASM-Brake Rod
109459	1	5	2	Clamp-Headlight
109494	1	2	1	Bezel-RH Headlight
109495	1	1	1	Bezel-LH Headlight
109530	5	15	1	Nut-Hex Palnut
109553	17	2	1	Boot-Battery Cable
109554	19	18	1	Bracket-Belt Guard
109703	21	26	1	M-Gear (Press)
109742	21	22	1	Gear-20t
109751	21	9	1	Gear-20t
109752	21	21	1	Gear-46t
109842	11	5	1	Bearing-Ball
109989	10	6	4	Spacer
110124	6	25	1	Hose ASM-Hydraulic
110125	6	19	1	Hose ASM-Hydraulic
110189	8	17	2	Rod End ASM
110656	12	19	1	Trunnion
110665	12	22	A/R	ASM-Bracket
110669	12	17	1	Plate-PTO
110768	14	1	1	Dipstick
111052	12	23	1	Rod-PTO Clutch
111071	10	12	2	Bumper-Rubber
111196	20	3	2	End Cap-Differential
111199	20	1	2	Bearing Ball
111201	20	21	1	Case-Transaxle
111216	5	18	1	ASM-Switch
111217	21	28	1	Tube Cmplt-Suction
111314	11	27	1	ASM-Pin
111332	3	17	A/R	Switch-Interlock
111332	9	42	1	Switch-Interlock
111332	19	4	2	Switch-Interlock
111343	5	9	5	Lens & Bushing ASM
111383	8	33	2	Collar W/Set Screw
111392	3	15	1	Retainer-Offset"j"
111642	19	3	2	Barrier-Switch
111757	1	7	1	Edging
111926	3	36	1	Decal-Elec. System
111951	15	12	2	Cap-Hub
111952	15	13	2	Washer-Hub Cap
111960	3	33	1	Decal-PTO Clutch

\*Not Illustrated

# Toro Part Number Index (cont.)

Part No.	Page No.	Ref. No.	Qty.	Description
112358	1	8	1	ASM--Hood & Grill
112415	3	6	1	Stop--PTO
112506	3	13	1	Bracket
112564	10	32	1	Lens--Light
112791	9	31	1	Pulley--Idler
113010	17	10	1	ASM--Battery Hold Down
113107	11	26	1	Clevis
113108	11	1	1	Rod--PTO Housing
113381	2	32	1	Spindle
113382	2	31	1	Spindle
113443	2	14	1	Tube--Steering Shaft
113445	7	21	1	ASM--Lift Bar
113454	8	15	1	ASM--Cam Control
113874	12	13	1	Bracket--Engine
113925	17	1	1	Cable--Battery To Sol
113927	20	25	1	Case--Transaxle
113969	17	9	2	Hook--Battery Retainer
114000	6	4	1	Valve ASM -- Hyd
114052	1	4	1	Wire Harness
114210	17	6	1	Wire ASM
114215	13	20	1	ASM--Exh Cover Front
114216	13	6	1	ASM--Exh Cover Rear
114263	10	23	2	Spring--Seat
114264	10	7	1	Adjuster--Seat
114265	10	5	1	Slide--Seat
114343	10	18	1	Spring--Gas
114344	10	16	2	Spacer
114345	10	17	1	Bracket--Gas Spring
114636	13	8	1	Nipple
114720	17	7	1	Tube--Battery Drain
114763	13	10	1	Nipple
114764	13	9	1	Elbow
114823	9	22	1	Washer--Curved Spring
114825	5	20	1	Pc Board & Schematic
114881	11	8	A/R	ASM--PTO Clutch Plate
114888	13	1	6	Screw
114895	9	29	1	Belt--Hydro Drive
114951	5	13	1	Control--Choke
115230	8	41	1	Switch--Clutch
115392	5	21	1	Control--Throttle
115411	19	2	1	Bracket--Switch
116000	4	8	4	Screw--CARR
116302	6	8	1	Arm--Control
116305	6	9	1	Bracket--Control
116321	8	5	1	Arm--Control
116324	8	6	1	Rod & Balljoint ASM
116397	19	17	2	Relay
116407	8	13	1	Rod End
116445	3	38	1	Decal--Parking Brake
116471	13	5	1	Muffler
116609	13	14	1	Plate--Engine
116743	15	3	2	ASM--Wheel & Tire
116745	1	19	1	Rod--Grill Pivot
116746	1	20	1	Bracket--Grill RH
116747	1	13	1	Bracket--Grill LH
116796	5	5	1	Switch--Button
116862	3	5	1	Plate--Top Hoodstand
117343	3	10	2	Latch--Hood
117344	1	10	2	Handle--Latch
117371	3	19	4	Screw--CARR
117377	5	4	1	Harness--P C Board
117431	3	11	4	Poprivet

\*Not Illustrated

# Toro Part Number Index (cont.)

Part No.	Page No.	Ref. No.	Qty.	Description
117432	1	9	4	Poprivet
117930	16	17	1	ASM-Latch
118280	19	11	1	Bracket-Fuse Holder
118530	23	19	1	Name Plate-Toro Logo
118660	8	7	1	Guide-Control
118860	9	6	1	Knob-Parking Brake
119340	6	22	1	Cylinder ASM
120590	5	2	1	Stop-Throttle
120930	19	9:1	1	Fuse Holder
121100	7	15	1	ASM-Lift Arm
201256	31	21	1	Link-Governor Control
201270	31	15	1	Washer
201327	31	25	1	Screw-Self TAP Flg HH
518211	4	4	A/R	Bumper-Rubber
519337	18	16	1	Clip
910865	10	3	4	Screw
911423	20	9	4	Bolt-Hex
933135	9	5	1	Pin-Spirol
933198	6	7	1	Pin-.Spirol
933198	8	4	1	Pin-. Spirol
933274	11	25	1	Pin-Spirol
937089	21	5	1	Key-Woodruff
937099	21	20	1	Key
937108	20	16	2	Woodruff Key
950154	34	6	2	Clamp-Corbin
9080026	11	14	4	Screw-Lock
9080026	21	2	1	Screw-Lock
9080196	14	8	1	Screw-HH
9080356	21	11	1	Screw-HH
9080406	21	14	2	Screw-HH
9104784	19	5	2	Screw
9107562	5	3	2	Screw-Phcr
9107622	3	8	2	Screw Phcr
9107922	5	7	2	Screw-Phcr
9107944	19	8	2	Screw-Phcr
9108372	3	1	8	Screw-Phcr
9108372	4	7	2	Screw-Phcr
9109482	3	29	A/R	Screw-Phcr
9109482	9	41	2	Screw-Phcr
9109484	8	42	2	Screw-Phcr
9114584	8	21	1	Screw-HH
9151126	3	20	4	Nut-HH
9157324	3	18	A/R	Nut-Lock
9157324	5	8	2	Nut-Lock
9157324	8	40	2	Nut-Lock
9157324	9	43	2	Nut-Lock
9157324	19	1	2	Nut-Lock
9157404	5	1	2	Nut
9157404	19	12	2	Nut
9159604	3	14	2	Nut-
9201504	3	9	2	Washer-Lock
9202324	6	23	1	Washer
9202414	9	4	1	Washer-Flat
9202594	5	16	1	Washer
9202624	5	19	1	Washer-Flat
9266714	1	6	2	Screw-HWHTF
9266714	19	6	1	Screw-HWHTF
9266944	3	7	13	Screw-HH
9266944	4	15	1	Screw-HH
9266944	8	27	1	Screw-HH
9266944	10	9	4	Screw-HH
9266944	19	20	5	Screw-HH

\*Not Illustrated

# Toro Part Number Index (cont.)

Part No.	Page No.	Ref. No.	Qty.	Description
9266974	10	19	4	Screw-HH
9266974	18	8	2	Screw-HH
9321204	6	3	1	Pin-Clevis
9329974	6	20	1	Pin-Clevis
9335044	8	28	1	Hairpin
9335054	7	1	2	Hairpin
9335054	12	21	1	Hairpin
9335054	16	10	1	Hairpin
9335064	11	23	1	Hairpin
9335074	7	16	2	Cotter-Hairpin
9601524	19	13	2	Screw
9601524	19	13	A/R	Screw-
9791204	16	6	2	Spacer
12-3270	13	4	3	Screw-HH
Nn10032	25	9	1	Camshaft (216)
Nn10048	34	9	1	Clamp
Nn10082	36	8	8	Lock-Valve Spring
Nn10125	36	43	2	Rod W/Bolts & Nuts STD
Nn10126	36	43	2	Rod W/Bolts & Nut .010"
Nn10127	36	43	2	Rod W/Bolts & Nut .020"
Nn10128	36	43	2	Rod W/Bolts & Nut .030"
Nn10143	27	7	1	Filter-Oil
Nn10159	26	13	1	Cap-Indicator Oil Fill
Nn10176	30	2	1	Wrapper-Element
Nn10187	30	17	1	Tube-Air Intake
Nn10190	30	19	1	Gasket
Nn10211	34	8	1	Cap-Fuel Fitting
Nn10253	29	9	1	Cable-Spark Plug 9"
Nn10254	29	9	1	Cable-Spark Plug 18.5"
Nn10302	34	4	1	Line-Fuel 7"
Nn10306	32	18	1	Hose-Fuel 30"
Nn10362	32	4	1	Washer-Flat
Nn10370	36	19	2	Screw-HH
Nn10373	27	4	2	Screw-HH
Nn10375	32	12	4	Screw-HH
Nn10379	26	7	4	Screw-HH
Nn10390	30	13	1	Screw-Hex Washer HH
Nn10394	28	17	2	Screw-Hex Washer HH
Nn10403	31	12	1	Screw-Self TAP Flg HH
Nn10448	26	11	1	Tube-Oil Fill
Nn10545	28	25	4	Screw-HH
Nn10545	29	12	1	Screw-HH
Nn10545	32	15	2	Screw-HH
Nn10769	23	17	1	Housing-Blower
Nn10774	30	1	1	Element-Air Cleaner
Nn10790	34	3	1	Line-Fuel 12"
Nn10821	36	21	1	Cover-Valve
Nn10825	28	27	1	Kit-Gearcase
Nn10826	28	3	1	Shaft & Arm Governor
Nn10830	33	7	1	Plug-Cap
Nn10832	23	22	1	Bracket-Governor Adjust
Nn10850	36	1	1	Block-Cylinder (Short)
Nn10853	25	11	1	Crankshaft
Nn10894	27	9	1	Drain-Oil Filter
Nn10929	22	12	1	Kit-Mounting Bracket
Nn10930	22	9	1	Cap-Starter Solenoid
Nn10932	31	13	1	Spring-Governor
38-1420	10	26	1	Switch-Seat
55-3570	18	7	1	ASM-Cap
57-8000	36	59	2	Bearing-Camshaft
57-8010	36	27	1	Gasket-Bearing Plate
57-8020	36	52	1	Bearing-Crankshaft

\*Not Illustrated

# Toro Part Number Index (cont.)

Part No.	Page No.	Ref. No.	Qty.	Description
57-8030	36		1	.010" Undersize
57-8050	36	29	1	Bearing-Crankshaft Rear
57-8060	36		1	.010" Undersize
57-8090	26	5	1	Gasket-Base
57-8130	25	12	1	Gear-Crankshaft
57-8140	25	13	1	Washer-Gear
57-8150	24	1	1	Screw-HH
57-8160	36	35	2	Washer-Thrust
57-8170	36	28	A/R	Shim-Crankshaft .005"
57-8180	24	6	1	Gear-Ring
57-8210	25	5	1	Gear-Camshaft
57-8230	25	6	1	Washer-Thrust
57-8280	36	18	2	Gasket-Cover
57-8330	36	38	2	Gasket-Head
57-8410	36	44	4	Bolt-Connecting Rod
57-8450	36	9	4	Tappet-Valve STD
57-8460	36	58	1	Kit-Gasket
57-8470	36	3	1	Plunger-Bypass Valve
57-8480	36	54	1	Pump-Oil
57-8490	26	4	1	Cup-Intake
57-9080	34	5	1	Pump-Fuel
57-9090	25	1	1	Ring-Retaining
57-9100	31	8	1	Spring-Governor
57-9120	31	9	1	Bushing-Control Arm
57-9120	31	16	1	Bushing-Control Arm
57-9130	25	2	1	Hub-Governor Cup
57-9170	33	9	1	Swivel-Choke Lever
57-9180	33	3	1	Link-Choke
57-9190	31	2	2	Clamp-Cable
57-9190	33	4	1	Clamp-Cable
57-9210	13	21	2	Gasket-Manifold
57-9340	29	8	2	Plug-Spark
57-9360	36		1	.002" Undersize
57-9430	28	12	1	Regulator-Voltage 20 Amp
57-9550	28	21	1	Clamp-Vacuum Port Cap
57-9570	28	5	1	Seal-Oil
57-9580	28	26	1	Seal-Oil
57-9590	36	31	1	Seal-Oil
57-9610	26	12	1	O Ring-Cap
57-9620	32	5	1	O Ring
57-9630	28	7	1	Bearing-Ball Gov Shaft
57-9640	25	4	1	Ball-Governor
57-9650	28	6	1	Bearing-Governor Shaft
57-9660	25	8	1	Key-Woodruff
57-9660	25	15	1	Key-Woodruff
57-9690	36	25	1	Plug-Welch
57-9700	32	6	1	Clip-Retaining
57-9710	25	14	1	Ring-Retaining
57-9720	36	48	4	Ring-Retaining
57-9730	28	4	1	Clip-Retaining
57-9730	32	9	1	Clip-Retaining
57-9740	36	20	2	Washer-Flat
57-9750	27	3	2	Washer-Flat
57-9750	28	24	5	Washer-Flat
57-9760	36	2	1	Washer-Flat
57-9770	22	3	2	Washer-Flat
57-9770	36	40	18	Washer-Flat
57-9790	36	47	4	Nut
57-9800	36		1	.020" Undersize
59-0010	36		1	.030" Undersize
59-0020	36		1	.002" Undersize
59-0030	36		1	.020" Undersize

\*Not Illustrated

# Toro Part Number Index (cont.)

Part No.	Page No.	Ref. No.	Qty.	Description
59-0040	36		1	.030" Undersize
59-0050	36	36	2	Insert-Valve Seat Intake
59-0080	36		2	.010" Oversize
59-0100	36	46	2	Insert-Valve Seat Exh
59-0110	36		2	.002" Oversize
59-0120	36		2	.005" Oversize
59-0130	36		2	.010" Oversize
59-0140	36		2	.025" Oversize
59-0180	36	39	1	Head-Cylinder RH
59-0260	36		4	.002" Oversize
59-0280	36	4	1	Spring-Bypass Valve
59-0290	36	51	1	Tube-Oil
59-0360	28	23	1	Tube-Vacuum Port
59-0370	28	22	1	Cap-Vacuum Port
59-0400	25	7	1	Pin-Center
59-0420	28	2	1	Yoke-Governor
59-0430	31	5	1	Spring-Idle Setting
59-0450	25	3	1	Cup-Governor
59-0470	33	1	1	Bracket-Choke Cable
59-0580	23	3	1	Clamp-Wire
59-0590	28	18	2	Terminal-Stator Leads
59-0640	27	5	1	Elbow-Street
59-0720	31	14	1	Pin-Cotter
59-0720	33	10	1	Pin-Cotter
59-0730	36	26	4	Pin-Drive
59-0740	28	9	1	Pin-Dowel
59-0750	36	53	2	Pin Align
59-0790	28	29	1	Stud-Gear Cover
59-0810	24	3	1	Washer-Flat
59-0820	23	16	4	Washer-Flat
59-0820	36	22	1	Washer-Flat
59-0830	23	5	6	Washer-Flat
59-0830	31	4	2	Washer-Flat
59-0830	31	20	1	Washer-Flat
59-0850	33	12	1	Washer-Flat
59-0880	36	32	5	Screw-Cap Flg HH
59-0900	36	41	18	Screw-HH
59-0910	36	5	1	Screw-HH
59-0950	28	1	2	Screw-Mach Pan HH
59-0970	23	6	2	Screw TAP Flg HH
59-0980	23	4	2	Screw TAP Washer HH
59-1000	31	26	3	Screw
59-1030	31	6	1	Screw-Tapping HH
59-1050	34	7	2	Screw St Pan HH
59-1080	23	9	4	Screw-Cap Flg HH
59-1080	28	11	1	Screw-Cap Flg HH
59-1100	23	21	2	Screw-Lock HH
59-1100	31	11	1	Screw-Lock HH
59-1130	28	28	1	Nut-Hex
59-1180	30	14	1	Capacitor
62-2730	22	13	1	Kit-Bushing
62-2760	22	1	1	Kit-Starter Hardware
62-2770	22	7	1	Kit-Starter Shift Lever
62-7770	5	10	2	Key-Ignition
66-0120	5	6	1	Knob
71-5730	26	8	1	Base-Oil
71-5770	36	37	2	Valve-Intake
71-5780	36	45	2	Spring-Clutch
71-5790	36	6	4	Spring-Valve
71-5800	36	7	4	Washer-Valve Spring
71-5810	36		1	Head-Cylinder LH
71-5830	36	17	4	Cap-Valve

\*Not Illustrated

# Toro Part Number Index (cont.)

Part No.	Page No.	Ref. No.	Qty.	Description
71-5920	24	5	1	Flywheel Incl 6
71-5960	34	2	1	Filter-Fuel
71-5980	32	16	2	Gasket-Manifold
71-5990	29	1	1	Cover-Plunger
71-6000	29	7	1	Coil-Battery Ignition
71-6010	29	13	1	Rotor-Ignition
71-6040	22	2	1	Starter Incl 1-13
71-6060	29	10	1	Clip-Wire
71-6080	23	10	2	Bracket-Lift
71-6140	30	16	1	Grommet-Rubber
71-6170	26	9	1	Seal-Oil
71-6180	36	23	2	Seal-Valve
71-6190	24	7	1	Key-Flywheel
71-6220	23	7	1	Clip-Wire
71-6220	29	11	2	Clip-Wire
71-6220	32	19	1	Clip-Wire
71-6250	36	24	2	Guide-Valve
71-6260	36		2	Guide-Valve
71-6290	36	57	1	Kit-Gasket Complete
71-6310	36	49	2	Pin-Piston
71-6340	24	8	6	Spring-Compression
71-6360	28	8	1	Gasket-Mntg
71-6380	28	14	1	Control-Ignition
71-6410	28	15	1	Insulator-Ignition
71-6430	29	5	1	Nut-Hex Flg HH
71-6440	29	4	1	Nut-Hex Flg HH
71-6460	29	6	2	Screw-Hex Washer HH
72-3880	33	2	1	Screw-Cap Flg HH
72-3890	31	17	1	Screw-HH
72-3890	33	8	1	Screw-HH
72-3900	31	1	1	Screw-Tapping HH
72-3900	33	5	1	Screw-Tapping HH
72-3930	22	8	1	Kit-Starter Solenoid
72-3940	22	6	1	Clutch-Starter
72-3950	22	5	1	Seal-Dust
78-1540	3	23	1	Bracket-Control
78-1550	7	7	1	Lift Lever
78-2880	2	4	1	Lower Steering
78-2900	2	33	2	ASM-Tie Rod
78-2990	10	13	1	Plate-Seat Pivot
78-3000	3	21	1	Battery Support Bkt
78-3020	19	22	1	Plate-Front
78-5610	3	12	1	Console
78-5620	3	2	1	Plate-Hoodstand Rear
78-5631	8	9	1	Bracket-Control
78-5640	6	17	1	ASM-Valve Actuator Bar
78-5660	8	2	1	Rod-Motion Control
78-5670	6	12	1	Rod-Lift Control
78-6020	9	23	1	ASM-Idler Arm
78-7270	3	37	1	Decal-Lower Dash
78-7300	3	35	1	Decal-Choke
78-7740	14	25	1	ASM-Brake Pivot Arm
78-8500	9	2	1	ASM-Parking Brake Pawl
79-0060	5	11	1	Voltmeter
79-2470	3	34	1	Decal-Back Plate
79-3620	19	9	1	Wiring-Harness & Dia
79-4990	18	19	1	Bracket-Fender Support
79-5020	14	27	1	Tube Cmplt- Flatr To Pump
79-5130	4	6	1	Cover-Side LH
79-5270	14	13	1	Filter-Oil
79-6330	30	11	1	Housing-Air Cleaner
79-6340	30	12	1	Support-Air Cleaner

\*Not Illustrated

# Toro Part Number Index (cont.)

Part No.	Page No.	Ref. No.	Qty.	Description
79-6360	31	3	1	Bracket-Cable
79-6390	31	23	1	Bracket-Governor Cont
79-6400	31	22	1	Bushing-Governor Cont
79-6420	31	10	1	Adapter-Governor Arm
79-6440	24	4	1	Screen-Air Inlet
79-6460	26	2	1	Bracket-Fill Tube
79-6470	27	1	1	Gasket-Adapter
79-6490	29	14	1	Gasket-Plate
79-6510	30	3	1	Spacer-Stud
79-6520	30	4	1	Spacer-Nylon
79-6580	22	4	2	Screw-Cap
82-0020	36	30	1	Plate-Bearing
82-0500	27	2	1	Adapter-Oil Filter
82-0530	36	12	1	Clamp-Tube
82-0540	36	10	1	Tube-Breather
82-0550	36	15	1	Cap & Valve-Breather
82-0560	36	14	2	Screen-Tube
82-0570	36	13	1	O-Ring-Cap
82-0620	23	18	1	Guard-Stationary
82-0680	27	8	1	Filter-Gasket Oil
82-0850	32	11	1	Gasket-Carb/Manifold
82-1000	28	13	2	Body-Term Conn Kit
82-1070	32	3	1	Fitting-Barbed
82-1080	32	2	2	Clamp-Hose .50" Dia
82-1080	34	1	6	Clamp-Hose .50" Dia
82-1090	32	2	1	Clamp-Hose .44" Dia
82-1120	32	1	1	Hose-Breather
82-1130	26	10	2	Plug-Square Head
82-1310	26	6	4	Washer-Flat
82-1310	36	33	5	Washer-Flat
82-1320	24	2	1	Washer-Flat
82-1340	29	2	2	Washer
82-1340	36	55	2	Washer
82-1350	32	13	6	Washer
82-1360	29	3	2	Screw-HH
82-1370	31	18	1	Screw-HH
82-1370	36	56	2	Screw-HH
82-1480	36	16	1	Screw-TAP Round HH
82-1500	28	20	3	Screw-Mach HH
82-1510	27	10	2	Screw-HH
82-1540	23	8	1	Bolt-HH
82-1540	32	17	1	Bolt-HH
82-1550	30	9	2	Screw-Hex Washer HH
82-1560	26	1	1	Screw
82-1590	23	20	4	Screw-PH Torx
82-1600	23	2	2	Screw-Cap Hex Flg HH
82-1620	31	19	1	Washer-Lock
82-1660	28	16	2	Washer-Lock
82-1670	30	5	1	Knob
82-1690	30	15	1	Nut-Hex Washer HH
82-1700	26	3	1	Nut-Speed
82-1800	36	42	2	Piston STD INC 48-49
83-2720	15	2	10	Bolt-Lug
83-2820	9	40	1	Spring-Extension
83-6520	16	16	1	Rod-Lock
86-9280	6	29	1	Tube ASM-Hyd Pressure
86-9290	6	28	1	Tube ASM-Hyd Return
88-2710	2	5	1	Support-Lower Steering
88-2790	14	42	1	Decal-Danger
92-0902	36		2	.010" Oversize
92-0903	36		2	.020" Oversize
92-0904	36		2	.030" Oversize

\*Not Illustrated

# Toro Part Number Index (cont.)

Part No.	Page No.	Ref. No.	Qty.	Description
92-0905	36	50	2	Kit-Ring Piston STD
92-0906	36		2	.005" Oversize
92-0907	36		2	.010" Oversize
92-0908	36		2	.020" Oversize
92-0909	36		2	.030" Oversize
92-0911	25	10	1	Sleeve-Bearing
92-0915	30	10	2	Screw-Mach HH
92-0916	33	6	1	Screw-Shoulder
92-0919	32	7	1	Rod-Governor Control
92-0920	23	1	1	Housing-Cylinder Air LH
92-0921	23	12	1	Housing-Cylinder Air RH
92-0922	31	7	1	Arm-Governor Control
92-0967	28	19	1	Stator
92-1525	3	28	1	W/A-Hoodstand
92-4987	2	19	1	W.a.-Steering Shaft
92-5935	22	10	1	Nut
92-8946	3	39	1	Decal-Danger
92-9510	18	20	A/R	Line-Fuel 50"
92-9513	18	20	1	Line-Fuel 50"
92-9826	1	24	1	Decal-Front Hood
92-9837	1	26	1	Decal-Danger
92-9848	21	29	1	Trans.-Hydro (Service)
93-1613	16	22	1	Latch
93-9800	15	10	2	ASM-Wheel & Tire
93-9814	14	34	1	ASM-Transaxle
94-1590-03	18	22	1	ASM-Fan Guard
94-1803	13	3	1	Baffle-Deflector
94-1806	32		1	Decal-Ident
94-1810	13	7	1	Engine-Onan
94-1834	14	43	1	Decal-Unidrive
94-1840	30	6	1	Cover-Cleaner
94-1841	32	10	1	Kit-Carburetor (216)
94-1842	32	10	1	Jet-Altitude
94-1843	32		1	Kit-Repair
94-1843	32	10	1	Kit-Repair
94-1844	32		1	Kit-Repair
94-1844	32	10	1	Kit-Repair
94-1845	27	6	1	Switch-Pressure
94-1845	27	6	1	Switch-Pressure
94-1846	32		1	Harness-Wire
94-1848	32		1	Jet-Altitude
94-3519	2	21	1	Steering Wheel 15"
94-3520	4	17	1	Footrest RH
94-3522	4	9	1	Footrest LH
94-3700	6	13	1	Knob-Lift
94-3701	12	2	1	PTO Clutch Lever
94-3704	11	21	1	Belt Cover-PTO
94-3707	8	32	1	Pedal-Brake
94-3709	1	23	1	Horsehead Logo
94-3709	15	16	4	Horsehead Logo
94-3711	4	1	1	Mat-Foot RH (Hydro)
94-3712	4	2	1	Mat-Foot LH
94-3715-01	2	22	1	Frame
94-3719	10	8	1	Seat
94-3722-01	10	22	1	Fender
94-3723	5	12	1	Hourmeter
94-3725-01	4	16	1	Belt Guard
94-3726	11	18	1	Bracket
94-3727	12	1	1	Knob
94-3728	8	3	1	Knob
94-3729	11	28	1	Retainer-Bolt
94-3730	15	4	2	Hubcap 8"

\*Not Illustrated

# Toro Part Number Index (cont.)

Part No.	Page No.	Ref. No.	Qty.	Description
94-3731	15	1	2	Hubcap 12"
94-3735	11	22	2	Nut-Wing
94-3737	13	2	1	Shield-Heat
94-6330	16	29	2	Decal-Attach A Matic
94-6332	1	27	1	Decal-Hood LH Top
94-6333	1	25	1	Decal-Hood RH Top
94-6341	3	31	2	Decal-Model 416-Hydro
94-6650	11	8	1	ASM-Plate
94-6652	12	22	1	ASM-Brake
94-6654	8	36	1	Rod
108326-03	14	2	1	Spacer-Pivot
123-1417	36	11	1	Baffle-Breather Tube
140-2794	30	8	1	Cover-Element
150-2550	32	8	1	Spring-Governor Rod
153-0423	33	11	1	Lever-Choke
191-1951	22	11	1	Kit-Starter Brush
237-69	2	20	1	O-Ring
2412-98	18	21	2	Clamp-Hose
281-10	14	16	1	Plug-Pipe
281-10	20	24	2	Plug-Pipe
288-4	13	11	1	Cap-Pipe
302-5	2	28	2	Fitting-Grease
302-5	8	34	1	Fitting-Grease
321-3	19	19	2	Screw-HH
321-4	6	11	1	Screw-HH
321-4	8	10	2	Screw-HH
321-4	17	3	2	Screw-HH
321-6	9	39	1	Screw-HH
321-8	10	25	2	Screw-HH
321-9	8	20	1	Screw-HH
321-11	6	26	2	Screw-HH
322-1	2	24	1	Screw-HH
322-2	7	13	2	Screw-HH
322-2	18	15	2	Screw-HH
322-3	3	22	2	Screw-HH
322-3	13	23	4	Screw-HH
322-3	14	37	2	Screw-HH
322-3	18	17	4	Screw-HH
322-4	10	10	6	Screw-HH
322-5	7	3	1	Screw-HH
323-5	14	33	A/R	Screw-HH
323-6	2	2	2	Screw-HH
323-6	11	19	1	Screw-HH
323-6	12	15	2	Screw-HH
323-7	12	12	1	Screw-HH
323-7	13	12	4	Screw-HH
323-7	14	33	4	Screw-HH
323-8	2	6	2	Screw-HH
323-8	9	8	1	Screw-HH
323-8	9	30	1	Screw-HH
323-8	13	19	4	Screw-HH
323-9	9	7	1	Screw-HH
323-9	14	29	1	Screw-HH
323-15	21	12	2	Screw-HH
323-23	8	24	1	Screw-HH
323-25	21	4	3	Screw-HH
323-26	21	15	1	Screw-HH
323-44	16	1	6	Screw-HH
3217-5	8	14	1	Nut-Hex
3217-5	9	24	1	Nut-Hex
3217-7	13	16	4	Nut-Hex
3218-1	12	9	2	Nut-Jam

\*Not Illustrated

# Toro Part Number Index (cont.)

Part No.	Page No.	Ref. No.	Qty.	Description
3218-3	20	17	4	Nut-HJ
3220-1	8	11	3	Nut-Hex
3229-25	1	14	4	Screw-CARR
3229-25	12	20	2	Screw-CARR
3230-1	4	12	1	Screw-CARR
3231-25	16	26	3	Screw-CARR
3235-22	14	21	1	Screw-HH Lock
3235-22	18	10	2	Screw-HH Lock
3243-5	20	18	4	Screw-Set
3245-32	8	33:1	2	Screw-Set
3246-2	11	11	2	Screw-HSH Set
3247-4	36	34	2	Screw-HS
3250-31	10	31	4	Screw-Phcr
3253-2	28	10	3	Washer-Lock
3253-3	12	10	2	Washer-Lock
3253-3	17	13	2	Washer-Lock
3253-4	2	25	1	Washer-Lock
3253-4	13	22	4	Washer-Lock
3253-4	14	38	2	Washer-Lock
3253-4	18	14	2	Washer-Lock
3253-5	36	33	5	Washer-Lock
3253-21	12	14	2	Washer-Spring Lock
3253-21	13	15	4	Washer-Spring Lock
3253-21	14	32	4	Washer-Spring Lock
3254-1	10	29	2	Washer-Lock
3254-2	1	21	1	Washer-Lock Int.
3256-4	9	9	2	Washer-Flat
3256-4	14	24	1	Washer-Flat
3256-4	18	9	2	Washer-Flat
3256-22	1	12	3	Washer-Flat
3256-22	8	19	2	Washer-Flat
3256-22	10	15	2	Washer-Flat
3256-22	12	11	2	Washer-Flat
3256-22	17	4	4	Washer-Flat
3256-23	3	4	2	Washer-Flat
3256-23	6	15	3	Washer-Flat
3256-23	7	20	1	Washer-Flat
3256-23	10	11	4	Washer-Flat
3256-24	8	25	2	Washer-Flat
3256-24	13	18	4	Washer-Flat
3256-24	14	22	2	Washer-Flat
3256-26	7	2	1	Washer-Flat
3256-26	14	12	1	Washer-Flat
3256-26	16	9	1	Washer-Flat
3256-27	11	24	1	Washer-Flat
3256-37	5	14	1	Washer-Flat
3256-62	7	10	2	Washer-Flat
3257-24	14	30	1	Key-Woodruff
3272-1	1	16	2	Pin-Cotter
3272-1	6	2	1	Pin-Cotter
3272-6	14	19	2	Pin-Cotter
3272-10	8	37	1	Pin-Cotter
3272-10	12	5	3	Pin-Cotter
3272-11	6	21	1	Pin-Cotter
3272-17	15	7	2	Pin-Cotter
3272-19	2	11	1	Pin-Cotter
3272-21	2	17	1	Pin-Cotter
3290-378	1	22	1	Tie-Cable
3290-479	4	3	17	Fastener-Panel
3296-4	8	39	1	Nut-Lock
3296-6	2	3	4	Nut-Lock
3296-27	10	28	4	Nut-Lock

\*Not Illustrated

# Toro Part Number Index (cont.)

Part No.	Page No.	Ref. No.	Qty.	Description
3296-29	3	24	4	Nut-Lock
3296-29	4	11	5	Nut-Lock
3296-29	6	14	2	Nut-Lock
3296-29	7	8	3	Nut-Lock
3296-29	10	4	6	Nut-Lock
3296-29	10	24	4	Nut-Lock
3296-29	18	13	4	Nut-Lock
3296-39	2	23	4	Nut-Lock
3296-39	7	6	1	Nut-Lock
3296-39	8	31	1	Nut-Lock
3296-39	9	18	1	Nut-Lock
3296-39	12	18	1	Nut-Lock
3296-39	13	17	4	Nut-Lock
3296-39	14	23	1	Nut-Lock
3296-39	16	4	6	Nut-Lock
3296-39	16	24	3	Nut-Lock
3296-39	21	7	6	Nut-Lock
3296-42	1	11	4	Nut-Lock
3296-42	6	5	3	Nut-Lock
3296-42	8	12	4	Nut-Lock
3296-42	10	14	2	Nut-Lock
3296-42	17	12	2	Nut-Lock
3296-42	19	10	4	Nut-Lock
3296-45	14	11	1	Nut
32103-22	17	11	2	Nut-Wing
32120-47	7	18	1	Ring-Retaining
32120-47	8	23	3	Ring-Retaining
32120-47	9	19	1	Ring-Retaining
32120-62	11	4	1	Ring-Retain
32120-64	21	10	1	Ring-Retaining
32120-72	11	3	2	Ring-Retaining
32120-93	2	34	2	Snap Ring
32121-94	8	8	1	Pin-Spirol
32121-111	2	15	1	Pin-Spiral
32128-40	11	17	1	Nut-Lock
32136-5	2	10	1	Nut-Slotted
32146-17	9	26	1	Nut-Hex Lock
32151-11	12	3	1	Ring-Grip
32151-91	7	11	2	Ring-Retaining
541-0275	32	14	1	Manifold-Intake (216)



