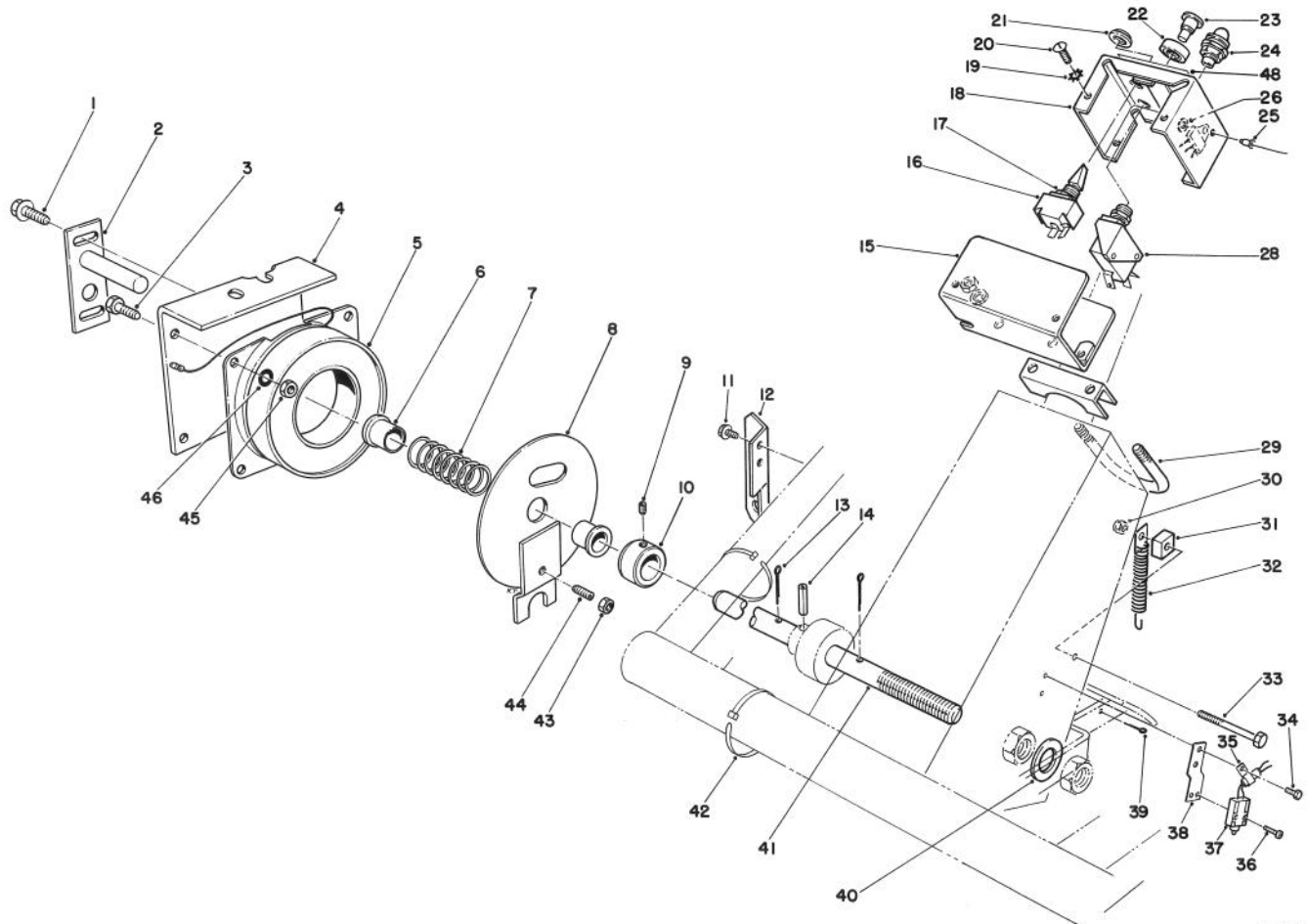




MODEL NO. 30676

**PARTS  
CATALOG**
**CRUISE CONTROL KIT  
For Groundsmaster 300 Series**


T-0001

**CRUISE CONTROL ASSEMBLY**

Ref. No.	Part No.	Description	No. Used
1	3234-13	Screw - Hex. Flange Hd.	2
2	43-6170	Shaft	1
3	321-2	Screw - Cap Hex. Hd.	4
4	43-6310	Bracket	1
5	42-1720	Coil - Field Core	1
6	256-273	Bushing - Flange	2
7	43-6200	Spring	1
8	43-6110	Plate - Clutch	1
9	3245-32	Screw - Set	1
10	43-6320	Collar	1
†11	32144-69	Screw - Thread Forming	2
†12	67-9190	Bracket - Hose	1
13	3272-6	Pin - Cotter	2
14	32121-16	Pin - Roll	1
15	67-7360	Housing	1

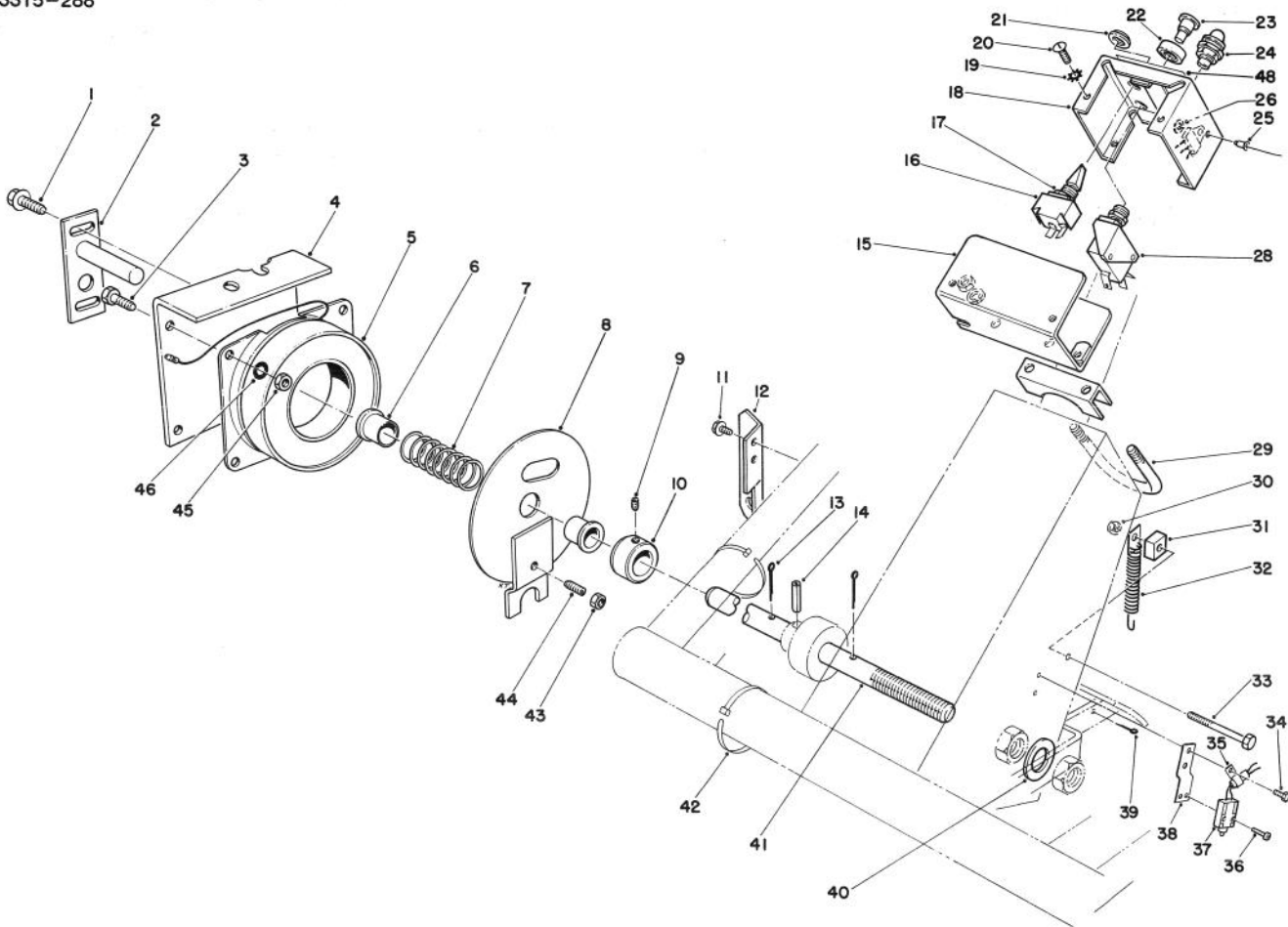
Ref. No.	Part No.	Description	No. Used
16	28-4110	Switch Assembly (Incl. Ref. #17 & 21)	1
17	218-498	Nut - Lock	1
18	67-7340	Cover - Box	1
19	3255-5	Washer - E.T.L.W.	4
20	3251-2	Screw - Round Hd.	4
21	218-497	Facenut - Beveled	1
22	43-6420	Bezel	1
23	43-6280	Button - Push	1
24	40-6410	Light - Warning	1
*	218-516	Lens - Red	1
25	3290-415	Rivet - Pop	1
26	3256-13	Washer - Backup	1
28	43-6290	Switch	1
29	67-9520	Clamp - Muffler	1
30	3296-47	Nut - Lock	1
31	67-7440	Spacer	1

†Required for units with Triflex 88" Cutting Unit.

\*Not Illustrated

©The TORO Company -1992

TPS

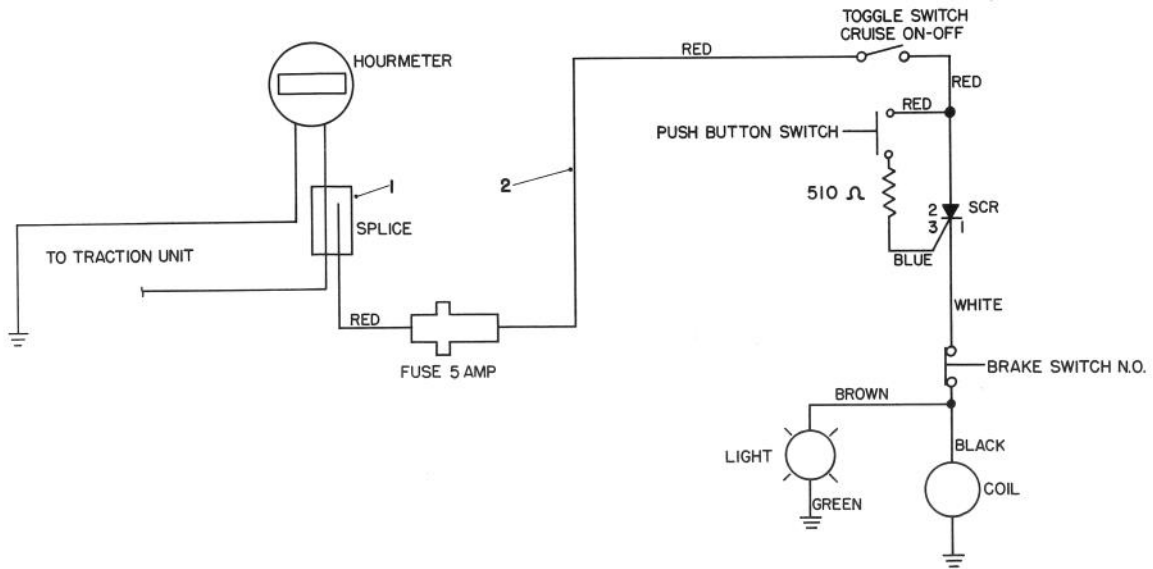


T-0001

## CRUISE CONTROL ASSEMBLY (Continued)

Ref. No.	Part No.	Description	No. Used
32	67-7430	Spring - Extension	1
33	322-5	Screw - Cap Hex. Hd.	1
34	32144-63	Screw - Thread Forming	2
35	2412-72	Clamp - R	1
36	3250-35	Screw - Pan Hd.	2
37	67-7410	Switch	1
38	67-7380	Bracket - Switch	1
39	3272-48	Pin - Cotter	1

Ref. No.	Part No.	Description	No. Used
40	43-8440	Spacer	1
41	88-3420	Shaft - Traction Pedal	1
42	3290-379	Tie - Cable	5
43	3217-26	Nut - Hex.	2
44	3245-31	Screw - Set	1
45	3217-5	Nut - Hex.	4
46	3253-3	Washer - Lock	4
48	43-6210	Decal - Speed Control	1



T-0002

# ELECTRICAL SCHEMATIC

Ref. No.	Part No.	Description	No. Used
1	218-529	Connector - Tap	1

Ref. No.	Part No.	Description	No. Used
2	67-7370	Wire Harness	1

## PRODUCT CHANGES

In an effort to make improvements available to TORO owners as quickly as possible, minor changes are incorporated into Toro's products from time to time that do not become immediately shown in the Parts Catalog. If such a change has been made in your unit, which is not reflected in your manual, see your TORO Distributor or his Authorized TORO Service Dealer for information and part numbers.

## COUNTRIES OTHER THAN THE UNITED STATES OR CANADA

Customers who have purchased TORO products exported from the United States or Canada should contact their Toro Distributor (Dealer) to obtain guarantee policies for your country, province or state. If for any reason you

are dissatisfied with your Distributor's service or have difficulty obtaining guarantee information, contact the TORO importer. If all other remedies fail, you may contact us at The Toro Company.

## MAINTENANCE RECORD

[illegible]