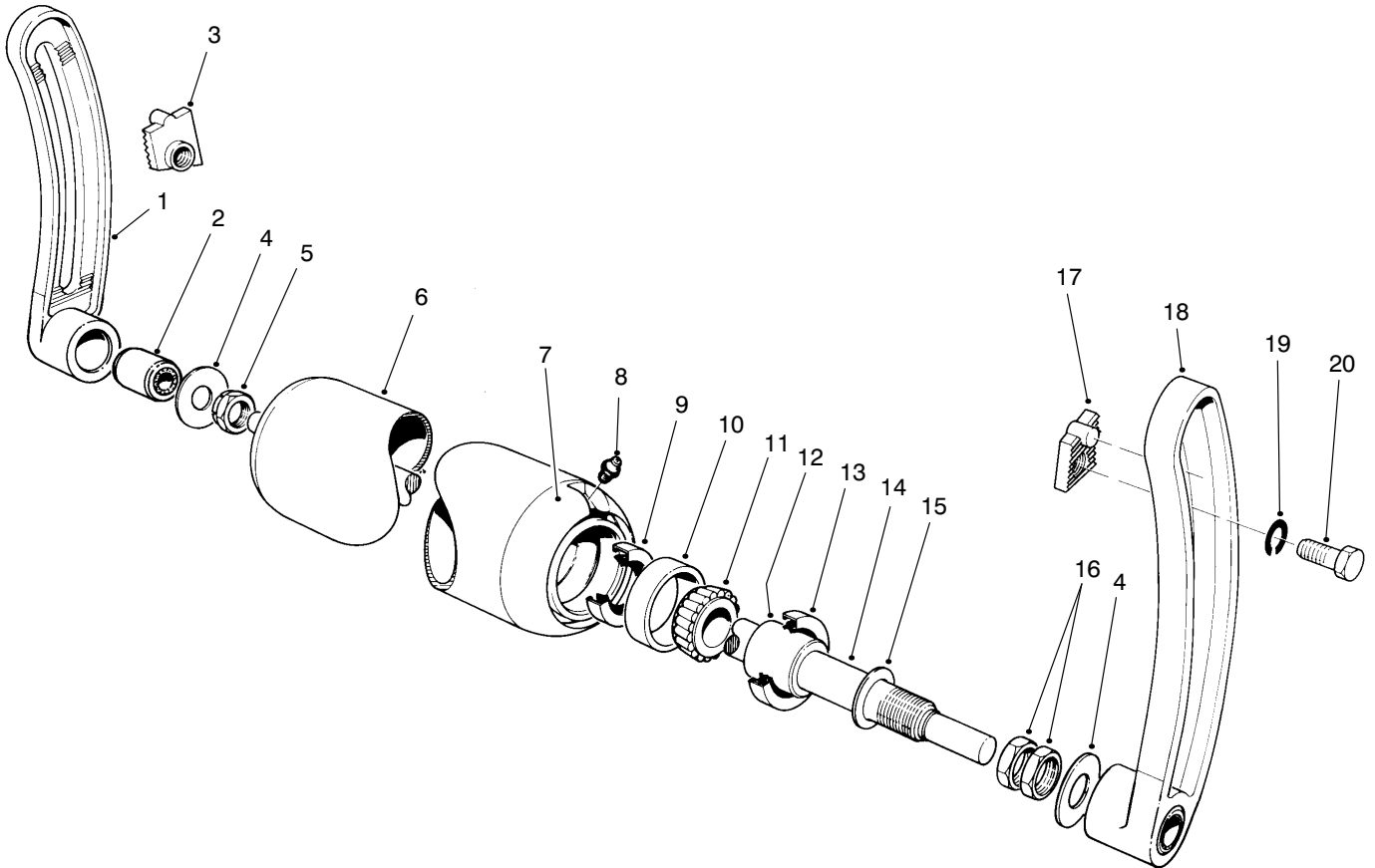




MODEL NO. 01005-30001 Thru 50001 & UP
 MODEL NO. 01007-30001 Thru 50001 & UP
 MODEL NO. 01011-30001 Thru 50001 & UP

**PARTS
 CATALOG**

**REELMASTER® 5, 7 & 11 BLADE
 Cutting Units**

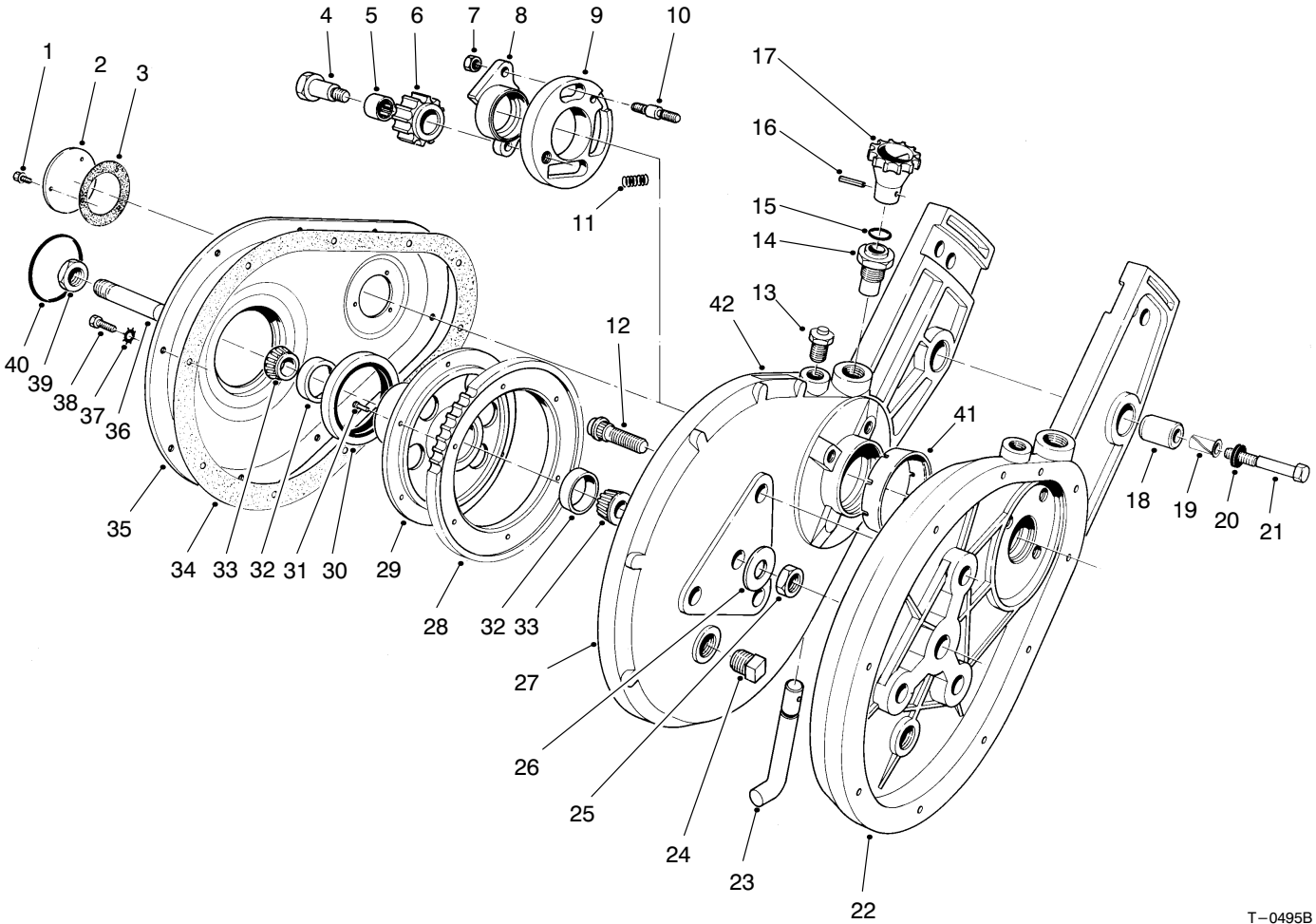


T-0494

ROLLER & BRACKET ASSEMBLY

Ref. No.	Part No.	Description	No. Used
1	11-5089	Bracket - Roller R.H. (Incl. Ref. #2)	1
2	3-4010	Bushing Assembly	2
3	47-4380	Nut - Roller, Adj. R.H.	1
4	5-4527	Washer - Thrust	2
5	3296-15	Nut - Lock	1
6	8-3990	Roller Assembly (Incl. Ref. #5, 7-16)	1
7	4-5659	End Cap - Roller, Rear (Incl. Ref. #8)	2
8	302-5	Fitting - Grease	2
9	252-122	Seal	2

Ref. No.	Part No.	Description	No. Used
10	254-79	Cup - Bearing	2
11	254-78	Cone - Bearing	2
12	5-4523	Sleeve	2
13	253-117	Seal	2
14	8-3980	Shaft - Roller	1
15	47-7510	Washer - Nylon	2
16	3220-7	Nut - Jam	2
17	47-4390	Nut - Roller, Adj. L.H.	1
18	11-5079	Bracket - Roller L.H. (Incl. Ref. #2)	1
19	3253-7	Washer - Lock	2
20	325-7	Screw - Cap, Hex. Hd.	2



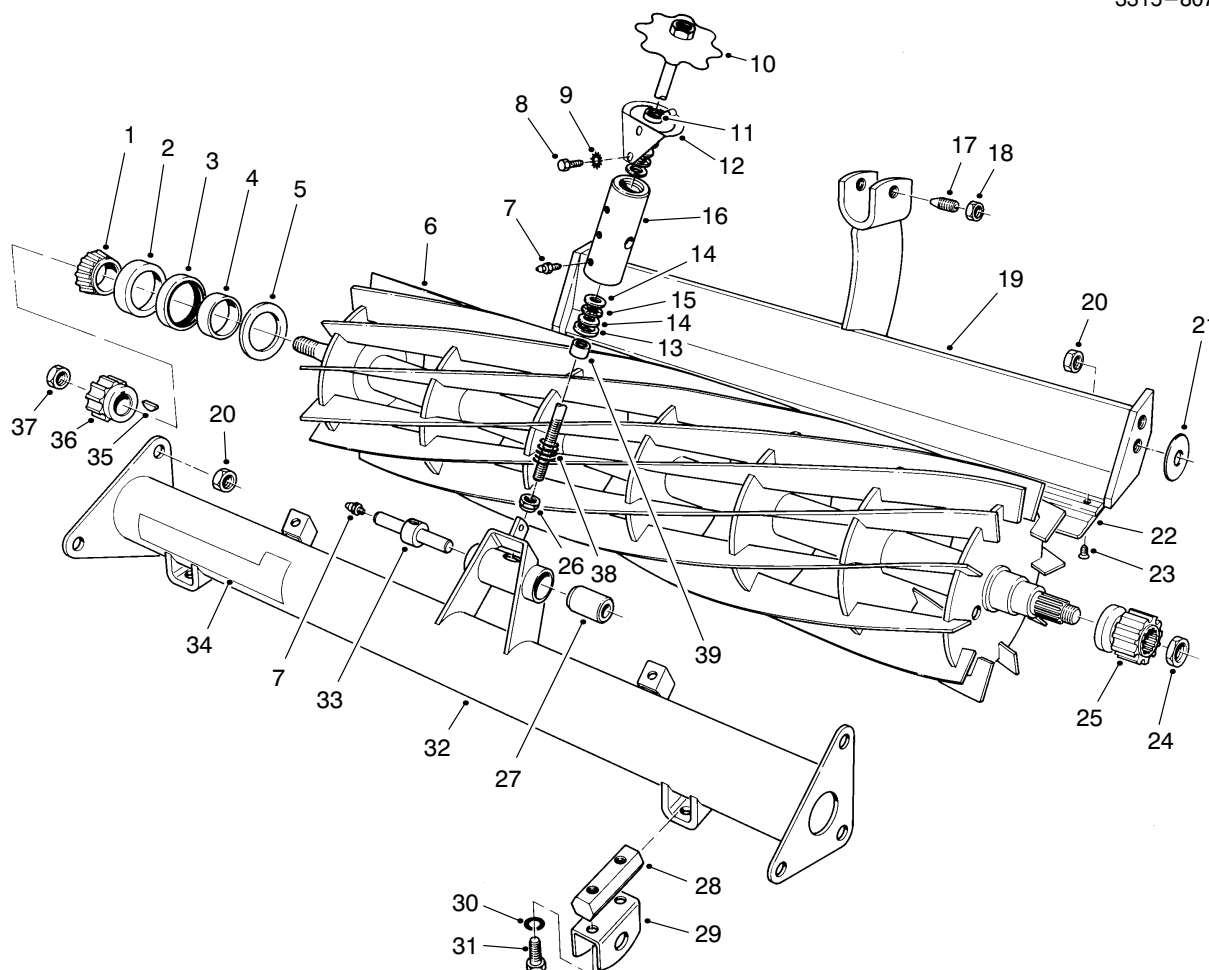
T-0495B

GEAR CASE ASSEMBLY

Ref. No.	Part No.	Description	No. Used
1	11-8960	Fastener Assembly	6
2	5-1460	Cover - Reel, Pinion	2
3	5-1458	Gasket	2
4	3-9117	Shaft - Idler, Pinion	1
*	3-9116	Shaft - Idler, Pinion	1
5	252-6	Bearing - Needle	2
6	12-1190	Pinion - Idler	2
7	3296-6	Nut - Lock	6
8	47-4470	Retainer - Ring, Ratchet RH	1
*	47-4480	Retainer - Ring, Ratchet LH	1
9	3-4170	Ring - Idler, Carrier R.H.	1
*	3-4160	Ring - Idler, Carrier L.H.	1
10	3-7445	Stud - Ring, Ratchet	6
11	3-3251	Spring - Compression	4
12	17-2520	Stud - Drive Type	6
13	302-39	Fitting - Relief	2
14	3-3892	Bearing - Finger, Throwout	2
15	237-21	O-Ring	2
16	3283-1	Pin - Drive, Lock	2
17	5-1464	Handle - Ratchet, Throwout	2
18	68-7530	Bushing Assy. - Rubber	2
19	47-4430	Bushing - Flange	2
20	47-5640	Spacer - Rubber	2
21	47-4460	Bolt - Shoulder, Eccentric	1
*	47-4450	Bolt - Shoulder	1
22	11-9419	Gear Case - L.H. (Incl. Ref. #12, 18, 2 & 3 on page 3)	1

Ref. No.	Part No.	Description	No. Used
23	3-3904	Ratchet Throwout Finger RH	1
*	3-3891	Ratchet Throwout Finger LH	1
24	281-3	Plug - Pipe	2
25	3219-10	Nut - Hex	2
26	3256-15	Washer - Flat	2
27	11-9409	Gear Case - R.H. (Incl. Ref. #12, 18 & #2 & 3 on page 3)	1
28	5-1457	Gear - Wheel, Drive	2
29	3-4001	Ring - Gear, Hub	2
30	253-101	Seal - Oil	2
31	3262-3	Rivet - Round Head	12
32	254-79	Cup - Bearing	4
33	254-78	Cone - Bearing	4
34	3-5002	Gasket	2
35	47-4060	Cover - Case, Gear	2
36	49-4100	Shaft - Axle, Stub	2
37	3254-17	Washer - Lock, Int. Tooth	20
38	49-2040	Screw - Mach. Washer Hd.	20
39	3296-15	Nut - Lock	2
40	237-38	O-Ring	2
41	68-9970	Seal - Guard	2
*	13-3629	Overhaul Kit	1
42	94-6305	Decal - Clutch, RH	1
*	94-6304	Decal - Clutch, LH	1

* Not Illustrated

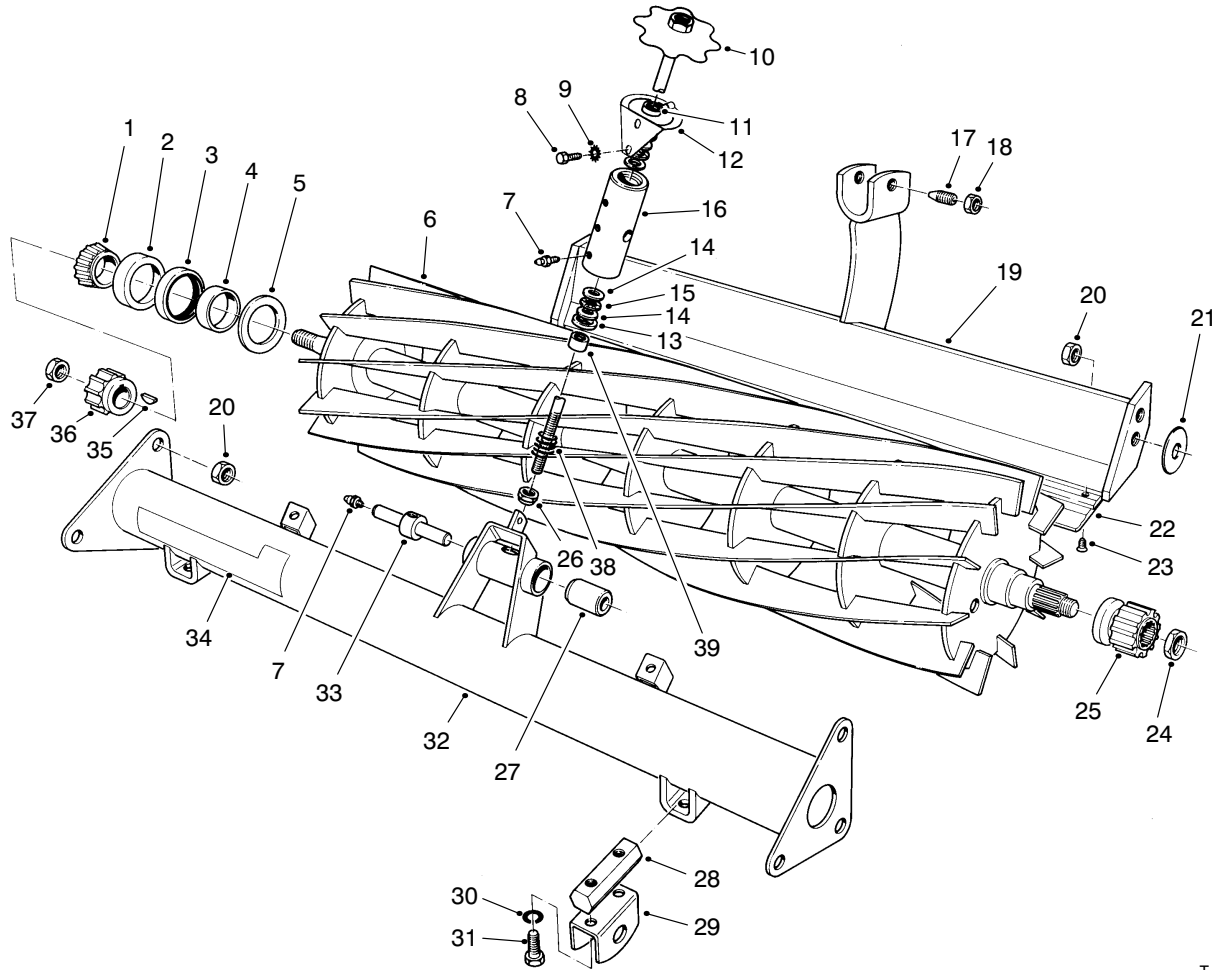


T-0496A

REEL & BED BAR ASSEMBLY

Ref. No.	Part No.	Description	No. Used	Ref. No.	Part No.	Description	No. Used
254	94	Cone – Bearing	2	18	3218-18	Nut – Jam	2
2	254-72	Cup – Bearing	2	19	47-4080	Bed Bar	1
3	253-146	Seal – Oil	2	20	3296-19	Nut – Lock	8
4	47-4250	Sleeve – Wear	2	21	47-4440	Washer	2
5	47-4260	Slinger – Grass	2	22	47-6680	Bedknife (Model 01011)	1
6	11-5119	Reel Assembly (Incl. Ref. #4 & 5) (Model No. 01011)	1	*	49-7660	Bedknife (Model 01005 & 01007)	1
*	11-6869	Reel Assembly (Incl. Ref. #4 & 5) (Model No. 01005)	1	23	57-4910	Screw – Special	11
*	11-6879	Reel Assembly (Incl. Ref. #4 & 5) (Model No. 01007)	1	24	3296-57	Nut – Lock	1
7	302-5	Fitting – Grease	2	25	47-4490	Pinion – Reel, L.H.	1
8	322-1	Screw – Cap, Hex. Hd.	2	26	3296-62	Nut – Lock	1
9	3290-244	Washer – Lock, Ext. Tooth	2	27	68-7530	Bushing Assembly – Rubber	2
10	47-4300	Handle Assembly	1	28	47-4530	Retainer	2
11	47-4420	Spacer – Sleeve, Adj.	2	29	37-3490	Bracket – Drawbar	2
12	47-4400	Arm – Spring	1	30	3253-21	Washer – Lock	4
13	253-84	Seal – Grease	2	31	323-6	Screw – Cap, Hex. Hd.	4
14	257-5	Washer – Thrust	4	32	11-5069	Tube (Incl. Ref. #27 & 33)	1
15	257-6	Bearing – Thrust	2	33	47-4510	Shaft – Adjustment	1
16	47-4410	Retainer – Adj. Bearing Arm	1	34	47-5750	Decal – Reelmaster 11 Blade (Model No. 01011)	1
17	32110-19	Screw – Set, Cone Point	2	34	49-7580	Decal – Reelmaster 5 Blade (Model No. 01005)	1
				*	49-7570	Decal – Reelmaster 7 Blade (Model No. 01007)	1

* Not Illustrated



T-0496A

REEL & BED BAR ASSEMBLY (Continued)

Ref. No.	Part No.	Description	No. Used
35	3257-3	Key	1
36	5-1463	Reel Pinion - R.H.	1
37	3-8386	Nut - Pinion, Reel	1

Ref. No.	Part No.	Description	No. Used
38	5-4373	Spring - Compression	1
39	47-4420	Spacer - Adjustment Sleeve	2
*†	49-8060	Puller - Bearing, Reel	1

* Not Illustrated

† Optional Equipment

Litho in U.S.A.