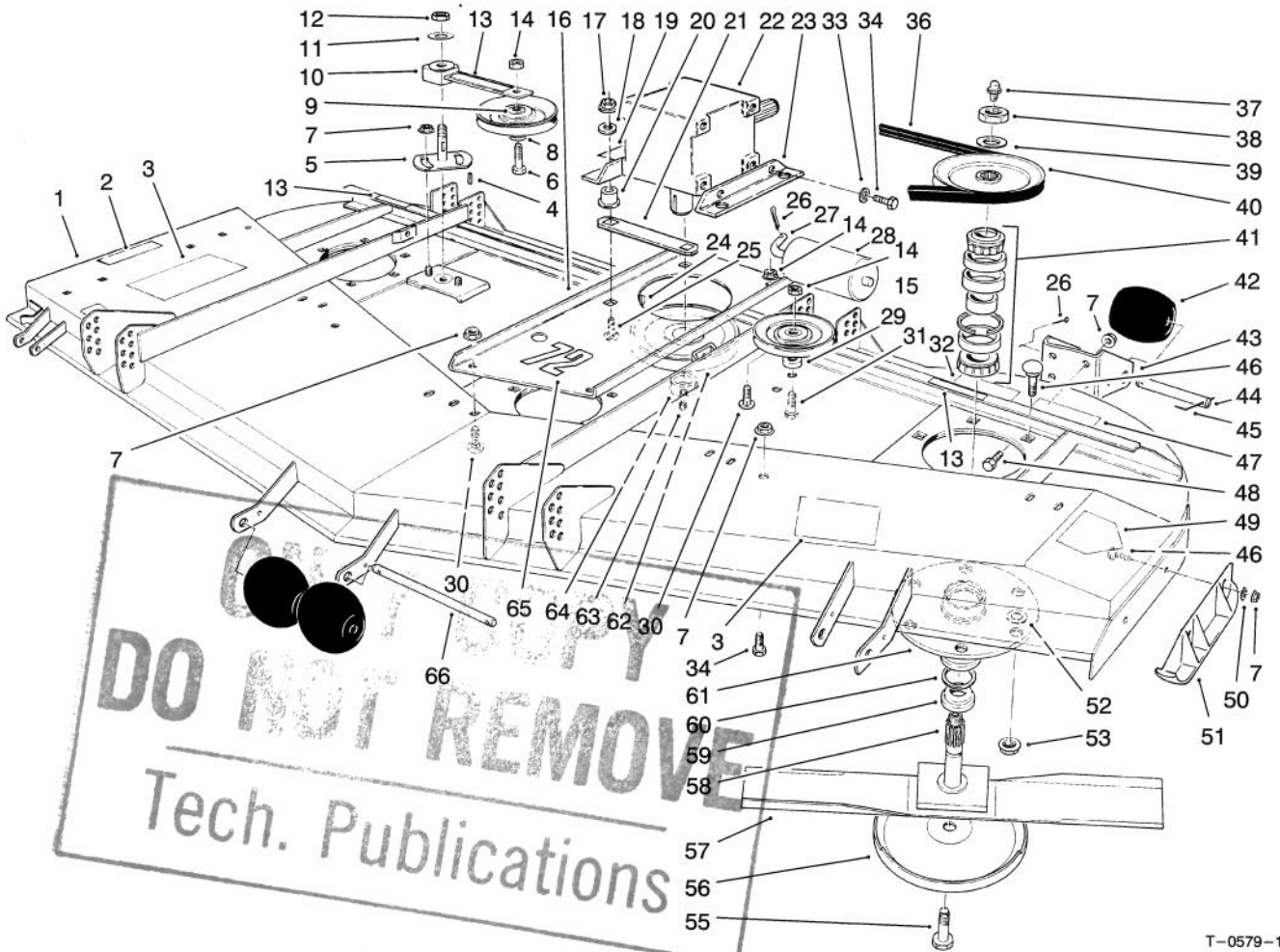




**MODEL NO. 30575-40001 & UP**

**PARTS CATALOG**

**72" SIDE DISCHARGE CUTTING UNIT**  
For Groundsmaster® 200 Series

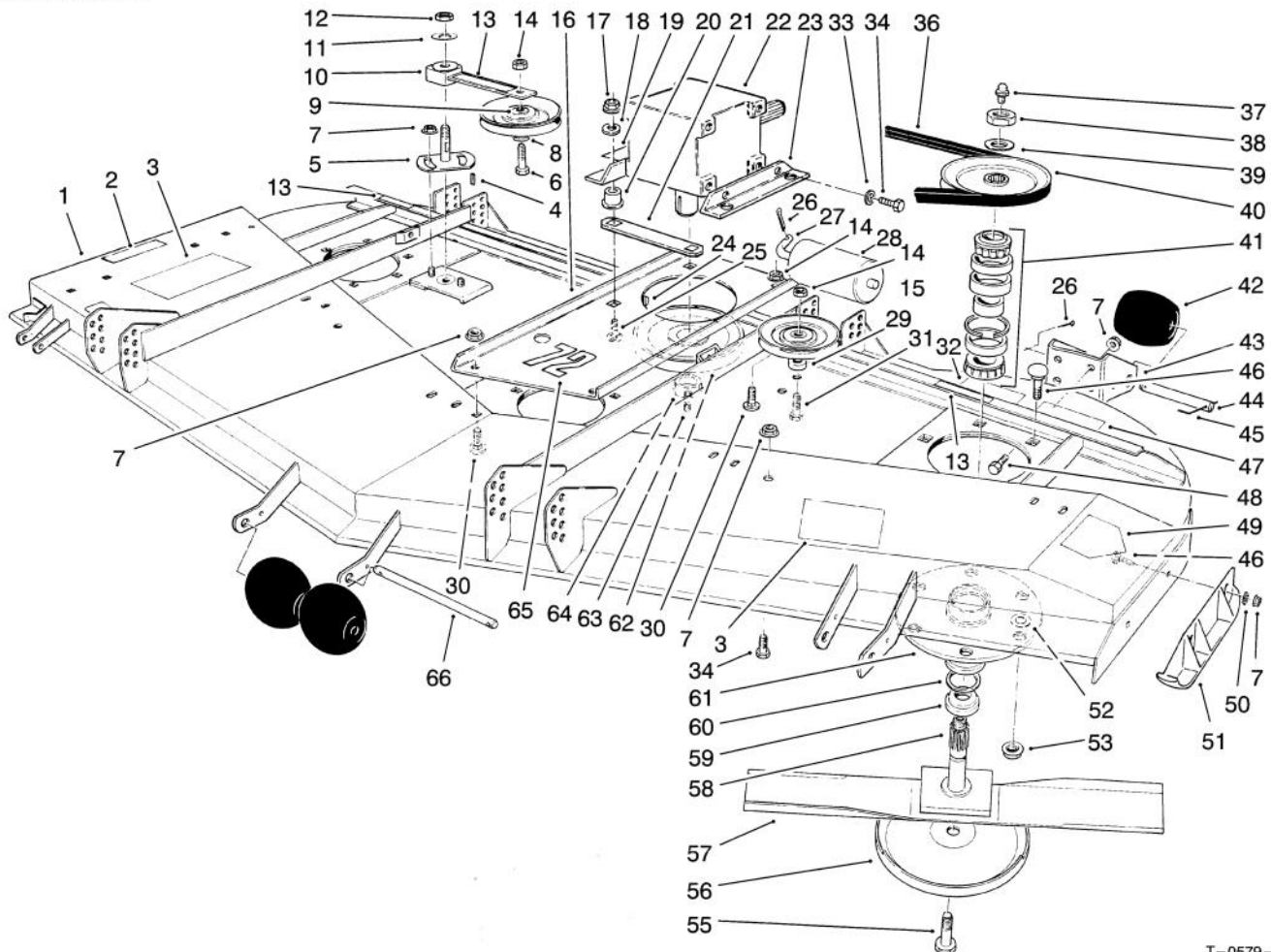


T-0579-1

**DECK ASSEMBLY**

Ref. No.	Part No.	Description	No. Used
1	92-8766	Housing (Incl. Ref. #2-4, 7, 13, 32, & 49)	1
2	66-6380	Decal - Deflector Missing	1
3	66-1340	Decal - Danger	2
4	5-1077	Key - Square	1
5	44-6300	Idler Plate	1
6	3211-8	Screw - Cap Hex. Hd.	1
7	3290-357	Nut - Lock	14
8	65-5950	Bushing - Pulley	2
9	7-0081	Washer - Special	2
10	27-8580	Assembly - Idler Socket & Bushing	1
11	3256-27	Washer - Flat	1
12	3296-33	Nut - Lock	1
13	67-5360	Decal - Shield Missing	3
14	3296-5	Nut - Lock	2

Ref. No.	Part No.	Description	No. Used
15	65-5940	Pulley - Idler	2
16	68-8530	Base - Gear Box	1
17	32153-2	Nut - Lock	4
18	63-8410	Washer - Lock	4
19	70-2560	Decal - Lube	1
20	63-9750	Mount - Isolation	4
21	68-9890	Cover - Gear Box, Front	1
22	68-6810	Gear Box	1
23	68-8560	Bracket - Gear Box	2
24	3257-5	Key - Woodruff	1
25	3231-26	Bolt - Carriage	4
26	3272-11	Pin - Cotter	7
27	40-0340	Shaft - Rear Roller	2
28	36-1740	Roller - Deck	2
29	44-6390	Spacer	1
30	3231-27	Bolt - Carriage	4
31	3211-9	Screw - Cap Hex. Hd.	1



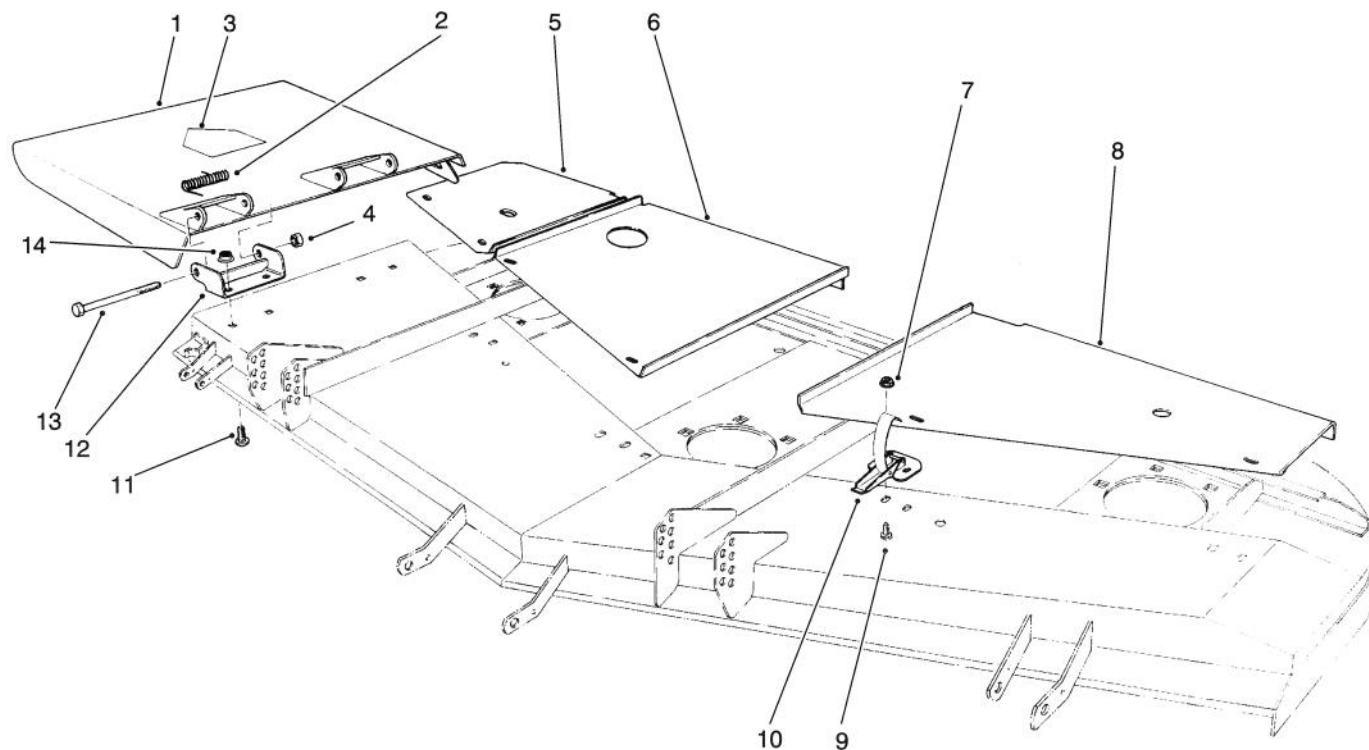
T-0579-1

## DECK ASSEMBLY (Continued)

Ref. No.	Part No.	Description	No. Used
32	68-8340	Decal - Blade Bolt Torque	1
33	3253-21	Washer - Lock	4
34	323-4	Screw - Cap Hex. Hd.	6
36	57-0240	V-Belt	1
37	302-2	Fitting - Grease	3
38	32146-20	Nut - Hex. Jam	3
39	7-4150	Washer	3
40	57-0560	Pulley	3
41	46-8530	Assembly - Bearing	3
42	29-4820	Roller	6
43	57-0580	Bracket - Roller Left Rear	1
*	57-0590	Bracket - Roller Right Rear	1
44	57-0680	Shaft - Roller	4
45	57-0690	Pin - Cotter, Special	5
46	3231-22	Bolt - Carriage	20
47	92-8778	Decal - Danger	1
48	323-7	Screw - Cap Hex. Hd.	4
49	43-8480	Decal - Danger	1
50	3290-224	Washer - Lock	2

Ref. No.	Part No.	Description	No. Used
51	57-0570	Skid	1
52	3256-24	Washer - Flat	A/R
53	32128-21	Nut - Flange	18
55	92-5816	Screw - Cap, Blade	3
56	72-9361	Cup - Anti-Scalp	3
57	94-1861	Blade	3
58	27-0920	Spindle - Shaft	3
59	27-0950	Spacer - Spindle Bearing	3
60	253-139	Seal - Wave	6
61	61-4160	Housing - Spindle	3
62	63-9900	Pulley - Gear Box	1
63	3245-9	Screw - Set, Socket Hd.	2
64	27-6140	Bushing - Taper Lock (Incl. Ref. #63)	1
65	57-0280	Decal - 72	1
66	40-6400	Shaft - Roller	1
*	57-0260	Assy. - Spindle Housing (Incl. Ref. #37-41 & 58-61)	3

\*Not Illustrated

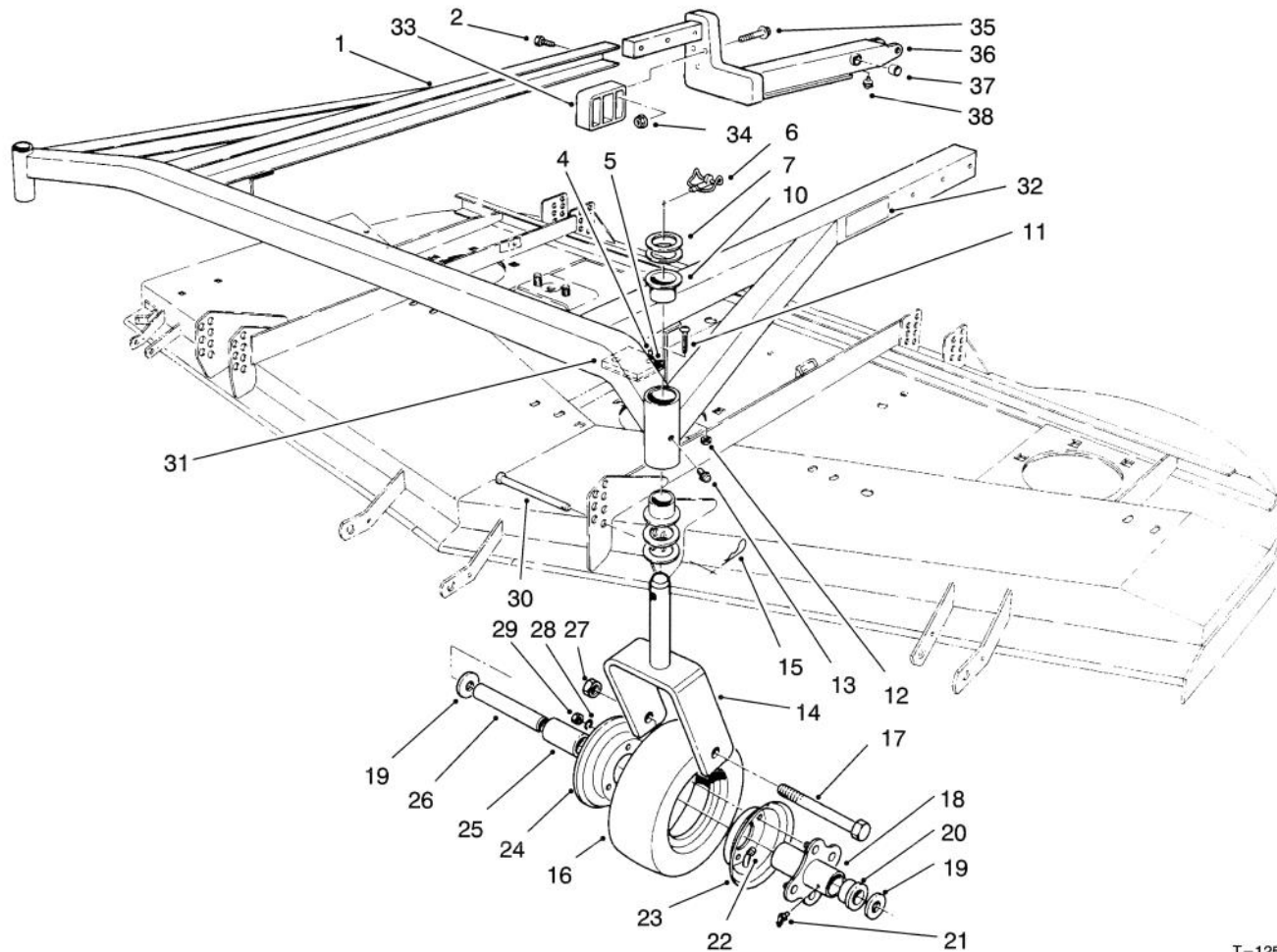


T-0589-1

## COVERS & DEFLECTOR ASSEMBLY

Ref. No.	Part No.	Description	No. Used
1	14-0909	Deflector Assembly (Incl. Ref. #3)	1
2	51-1550	Spring	2
3	54-9220	Decal - Danger	1
4	32153-5	Nut - Lock	2
5	57-0230	Cover - R.H.	1
6	57-0210	Cover - Center	1
7	32128-17	Nut - Lock	12

Ref. No.	Part No.	Description	No. Used
8	57-0220	Cover - L.H.	1
9	3290-321	Screw - Hex Slotted Hd.	12
10	249-21	Latch - Draw	6
11	3231-27	Bolt - Carriage	4
12	51-1530	Bracket - Hinge	2
13	325-17	Screw - Cap Hex. Hd.	2
14	3290-357	Nut - Flange	4



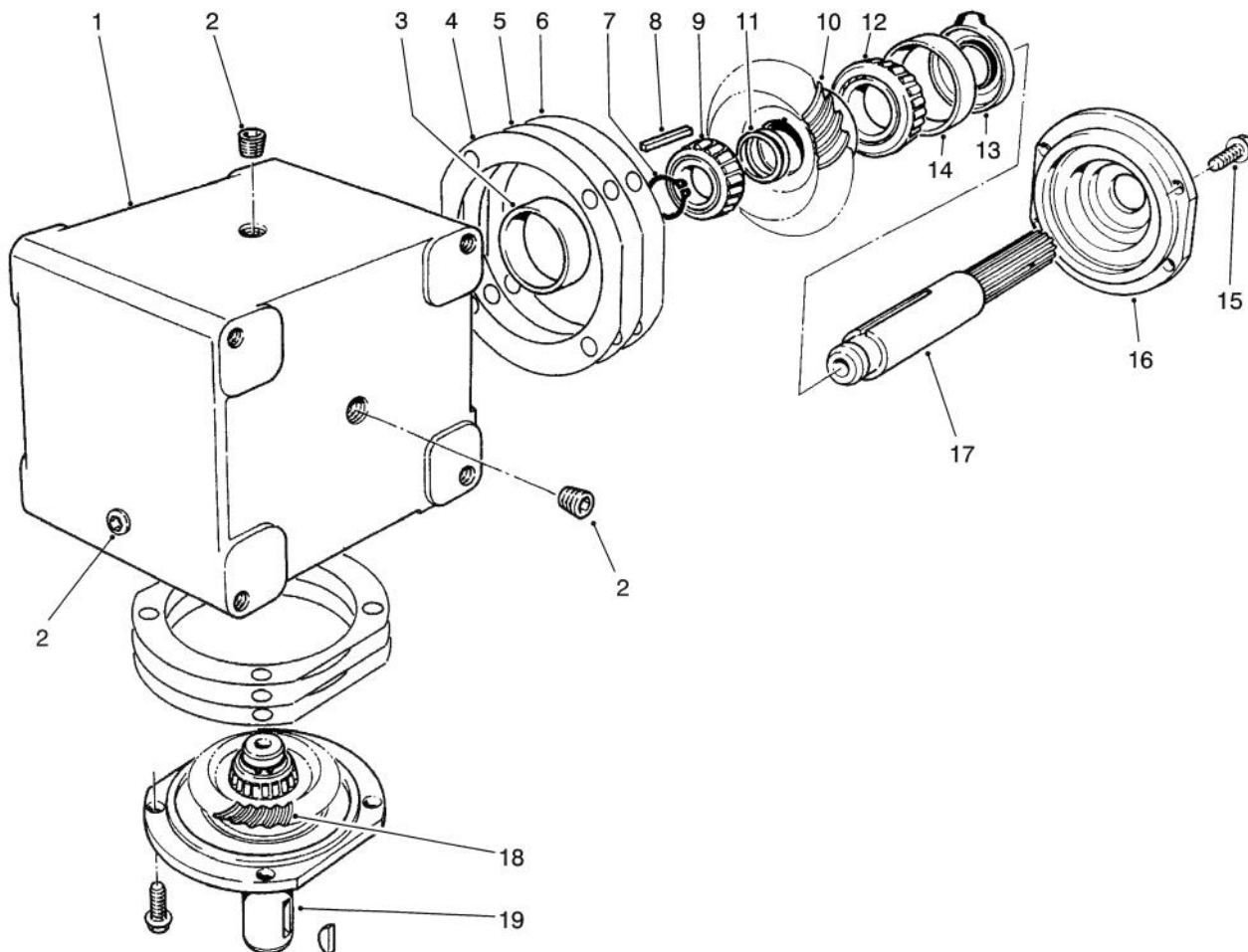
T-1252-2

## CARRIER FRAME ASSEMBLY

Ref. No.	Part No.	Description	No. Used
1	83-4570	Carrier Frame Assembly (Incl. Ref. #10 & 13)	1
2	325-32	Screw - Cap Hex. Hd.	6
4	40-9520	Spacer - Split	4
5	40-0330	Cushion - Rubber	2
6	283-71	Pin - Lynch	2
7	3-6781	Washer - Thrust	8
10	94-1291	Bushing - Special	4
11	32122-28	Screw - Mach. Truss Hd.	4
12	3296-2	Nut - Lock	4
13	302-5	Fitting - Grease	2
14	68-8900	Fork - Castor	2
15	3290-355	Pin - Hair Cotter	4
16	68-8960	Tire	2
17	325-19	Screw - Cap Hex. Hd.	2
18	68-8940	Hub - Center	2
19	3256-6	Washer - Flat	4
20	62-5580	Bushing	4
21	302-61	Fitting - Grease	2
22	68-8950	Tube w/Valve	2
23	68-8920	Wheel Half - Female	2

Ref. No.	Part No.	Description	No. Used
24	68-8930	Wheel Half - Male	2
25	62-5570	Bearing - Roller	2
26	68-8980	Bushing - Spanner	2
27	32153-5	Nut - Lock	2
28	3253-4	Washer - Lock	8
29	3219-2	Nut - Hex.	8
30	283-55	Pin - Clevis	4
31	42-6200	Shim - Cushion	A/R
32	68-8360	Decal - Height Of Cut	1
33	83-4520	Cradle - Rear	2
34	32128-40	Nut - Flange	6
35	3234-19	Screw - Flange Hd.	6
36	76-3080	Lift Arm R.H. (Incl. Ref. # 37 & 38)	1
*	76-3090	Lift Arm L.H. (Incl. Ref. # 37 & 38)	1
37	92-5648	Bushing	4
38	302-62	Fitting - Grease	1
*	13-3869	Castor Wheel Assembly (Incl. Ref. #16 -18, 20-25 & 28-29)	2

\*Not Illustrated

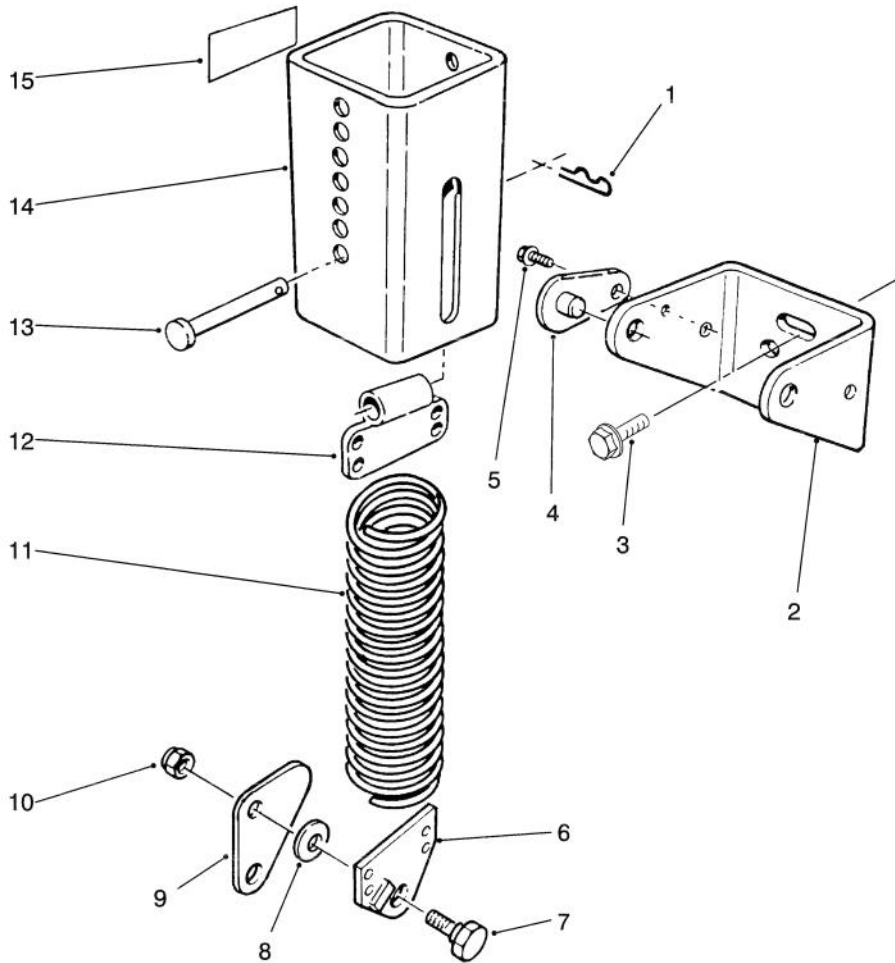


T-0977-2

### GEAR BOX ASSEMBLY NO. 68-6810

Ref. No.	Part No.	Description	No. Used
1	68-7030	Housing	1
2	62-3490	Plug - Pipe (Solid)	4
3	62-3360	Cup - Bearing	2
4	62-3420	Gasket (.015 in.)	A/R
5	62-3430	Gasket (.005 in.)	A/R
6	62-3440	Gasket (.003 in.)	A/R
7	68-7070	Ring - Retaining	2
8	62-3380	Key	2
9	62-3370	Cone - Bearing	2
10	68-7080	Gear	1

Ref. No.	Part No.	Description	No. Used
11	72-9370	Shim (.020 in.)	4
12	62-3330	Cone - Gear	1
13	62-3400	Seal	2
14	62-3340	Cup - Bearing	2
15	62-3310	Screw - Cap	8
16	62-3410	Cap	2
17	68-7040	Shaft	1
18	68-7060	Gear	1
19	68-7050	Shaft	1



T-2486-1

## COUNTERBALANCE ASSEMBLY

Ref. No.	Part No.	Description	No. Used
1	3290-355	Pin - Hair, Cotter	2
2	66-8230	Bracket - Mounting	2
3	3234-11	Screw - Flange	4
4	70-7920	Assembly - Pin, Lock	4
5	12-3270	Screw - Self Tapping	4
6	66-8420	End - Spring	2
7	46-3380	Bolt - Shoulder	4
8	3256-24	Washer - Flat	4

Ref. No.	Part No.	Description	No. Used
9	66-8440	Link - Knee	2
10	3296-44	Nut - Lock	4
11	66-8390	Spring - Extension	2
12	70-7940	End - Spring	2
13	283-69	Pin - Clevis	2
14	70-7970	Assembly - Spring Cover	2
15	55-4300	Decal - Caution	4

# TORO PART NUMBER INDEX

3316-313 REV B

Part No.	Description	Pg. Ref. No. No. Qty.	Part No.	Description	Pg. Ref. No. No. Qty.
3-6781	Washer - Thrust	4 7 8	68-7050	Shaft	5 19 1
5-1077	Key - Square	1 4 1	68-7060	Gear	5 18 1
7-0081	Washer - Special	1 9 2	68-7070	Ring - Retaining	5 7 2
7-4150	Washer	2 39 3	68-7080	Gear	5 10 1
12-3270	Screw - Self Tapping	6 5 4	68-8340	Decal - Blade Bolt Torque	2 32 1
13-3869	Castor Wheel Assembly	4 * 1	68-8360	Decal - Height Of Cut	4 32 1
14-0909	Deflector Assembly	3 1 1	68-8530	Base - Gear Box	1 16 1
27-0920	Spindle - Shaft	2 58 3	68-8560	Bracket - Gear Box	1 23 2
27-0950	Spacer - Spindle Bearing	2 59 3	68-8900	Fork - Castor	4 14 2
27-6140	Bushing - Taper Lock	2 64 1	68-8920	Wheel Half - Female	4 23 2
27-8580	Assembly - Idler Socket &	1 10 1	68-8930	Wheel Half - Male	4 24 2
29-4820	Roller	2 42 6	68-8940	Hub - Center	4 18 2
36-1740	Roller - Deck	1 28 2	68-8950	Tube w/Valve	4 22 2
40-0330	Cushion - Rubber	4 5 2	68-8960	Tire	4 16 2
40-0340	Shaft - Rear Roller	1 27 2	68-8980	Bushing - Spanner	4 26 2
40-6400	Shaft - Roller	2 66 1	68-9890	Cover - Gear Box, Front	1 21 1
40-9520	Spacer - Split	4 4 4	70-2560	Decal - Lube	1 19 1
42-6200	Shim - Cushion	4 31 A/R	70-7920	Assembly - Pin, Lock	6 4 4
43-8480	Decal - Danger	2 49 1	70-7940	End - Spring	6 12 2
44-6300	Idler Plate	1 5 1	70-7970	Assembly - Spring Cover	6 14 2
44-6390	Spacer	1 29 1	72-9361	Cup - Anti-Scalp	2 56 3
46-3380	Bolt - Shoulder	6 7 4	72-9370	Shim (.020 in.)	5 11 4
46-8530	Assembly - Bearing	2 41 3	76-3080	Lift Arm R.H.	4 36 1
51-1530	Bracket - Hinge	3 12 2	76-3090	Lift Arm L.H.	4 * 1
51-1550	Spring	3 2 2	83-4520	Cradle - Rear	4 33 2
54-9220	Decal - Danger	3 3 1	83-4570	Carrier Frame Assembly	4 1 1
55-4300	Decal - Caution	6 15 4	92-5648	Bushing	4 37 4
57-0210	Cover - Center	3 6 1	92-5816	Screw - Cap, Blade	2 55 3
57-0220	Cover - L.H.	3 8 1	92-8766	Housing	1 1 1
57-0230	Cover - R.H.	3 5 1	92-8778	Decal - Danger	2 47 1
57-0240	V-Belt	2 36 1	94-1291	Bushing - Special	4 10 4
57-0260	Assy. - Spindle Housing	2 * 3	94-1861	Blade	2 57 3
57-0280	Decal - 72	2 65 1	249-21	Latch - Draw	3 10 6
57-0560	Pulley	2 40 3	253-139	Seal - Wave	2 60 6
57-0570	Skid	2 51 1	283-55	Pin - Clevis	4 30 4
57-0580	Bracket - Roller Left Rear	2 43 1	283-69	Pin - Clevis	6 13 2
57-0590	Bracket - Roller Right Rear	2 * 1	283-71	Pin - Lynch	4 6 2
57-0680	Shaft - Roller	2 44 4	302-2	Fitting - Grease	2 37 3
57-0690	Pin - Cotter, Special	2 45 5	302-5	Fitting - Grease	4 13 2
61-4160	Housing - Spindle	2 61 3	302-61	Fitting - Grease	4 21 2
62-3310	Screw - Cap	5 15 8	302-62	Fitting - Grease	4 38 1
62-3330	Cone - Gear	5 12 1	323-4	Screw - Cap Hex. Hd.	2 34 6
62-3340	Cup - Bearing	5 14 2	323-7	Screw - Cap Hex. Hd.	2 48 4
62-3360	Cup - Bearing	5 3 2	325-17	Screw - Cap Hex. Hd.	3 13 2
62-3370	Cone - Bearing	5 9 2	325-19	Screw - Cap Hex. Hd.	4 17 2
62-3380	Key	5 8 2	325-32	Screw - Cap Hex. Hd.	4 2 6
62-3400	Seal	5 13 2	3211-8	Screw - Cap Hex. Hd.	1 6 1
62-3410	Cap	5 16 2	3211-9	Screw - Cap Hex. Hd.	1 31 1
62-3420	Gasket (.015 in.)	5 4 A/R	3219-2	Nut - Hex.	4 29 8
62-3430	Gasket (.005 in.)	5 5 A/R	3231-22	Bolt - Carriage	2 46 20
62-3440	Gasket (.003 in.)	5 6 A/R	3231-26	Bolt - Carriage	1 25 4
62-3490	Plug - Pipe (Solid)	5 2 4	3231-27	Bolt - Carriage	3 11 4
62-5570	Bearing - Roller	4 25 2	3231-27	Bolt - Carriage	1 30 4
62-5580	Bushing	4 20 4	3234-11	Screw - Flange	6 3 4
63-8410	Washer - Lock	1 18 4	3234-19	Screw - Flange Hd.	4 35 6
63-9750	Mount - Isolation	1 20 4	3245-9	Screw - Set, Socket Hd.	2 63 2
63-9900	Pulley - Gear Box	2 62 1	3253-4	Washer - Lock	4 28 8
65-5940	Pulley - Idler	1 15 2	3253-21	Washer - Lock	2 33 4
65-5950	Bushing - Pulley	1 8 2	3256-6	Washer - Flat	4 19 4
66-1340	Decal - Danger	1 3 2	3256-24	Washer - Flat	6 8 4
66-6380	Decal - Deflector Missing	1 2 1	3256-24	Washer - Flat	2 52 A/R
66-8230	Bracket - Mounting	6 2 2	3256-27	Washer - Flat	1 11 1
66-8390	Spring - Extension	6 11 2	3257-5	Key - Woodruff	1 24 1
66-8420	End - Spring	6 6 2	3272-11	Pin - Cotter	1 26 7
66-8440	Link - Knee	6 9 2	3290-224	Washer - Lock	2 50 2
67-5360	Decal - Shield Missing	1 13 3	3290-321	Screw - Hex Slotted Hd.	3 9 12
68-6810	Gear Box	1 22 1	3290-355	Pin - Hair Cotter	4 15 4
68-7030	Housing	5 1 1	3290-355	Pin - Hair, Cotter	6 1 2
68-7040	Shaft	5 17 1	3290-357	Nut - Flange	3 14 4

\*Not Illustrated

# TORO PART NUMBER INDEX (Cont.)

Part No.	Description	Pg. Ref. No. No. Qty.	Part No.	Description	Pg. Ref. No. No. Qty.
3290-357	Nut - Lock	1 7 14	32128-40	Nut - Flange	4 34 6
3296-2	Nut - Lock	4 12 4	32146-20	Nut - Hex. Jam	2 38 3
3296-5	Nut - Lock	1 14 2	32153-2	Nut - Lock	1 17 4
3296-33	Nut - Lock	1 12 1	32153-5	Nut - Lock	3 4 2
3296-44	Nut - Lock	6 10 4	32153-5	Nut - Lock	4 27 2
32122-28	Screw - Mach. Truss Hd.	4 11 4			
32128-17	Nut - Lock	3 7 12			
32128-21	Nut - Flange	2 53 18			

## OPTIONAL EQUIPMENT

Phenolic Caster Wheel . . . . . Part No. 27-1050