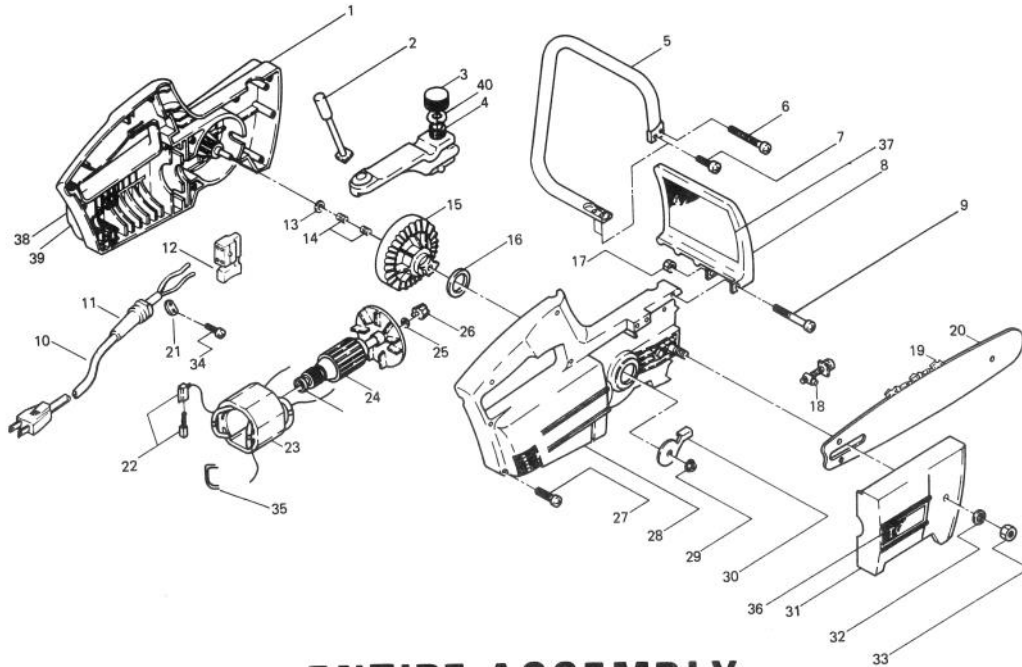


**TORO®**MODEL NO. 51140  
SERIAL NO. 93115101 & UP**PARTS  
CATALOG****TORO COMPACT ELECTRIC CHAIN SAW 14"****ENTIRE ASSEMBLY**

Ref. No.	Part No.	Description	No. Used
1	34-6220	Left Hand Housing	1
2	34-6190	Oil Button	1
3	34-6370	Oil Cap	1
4	34-6170	Oil Tank	1
5	34-6320	Front Handle	1
6	34-6020	Screw	1
7	32104-118	Screw	3
8	34-6090	Hand Guard	1
9	34-5950	Screw	1
10	34-6380	Power Supply Cord	1
11	34-6200	Bend Relief	1
12	34-6210	Switch	1
13	34-6130	Thrust Washer	1
14	34-6140	Needle Bearing	2
15	34-6120	Sprocket Assembly	1
16	34-6360	Felt Seal	1
17	34-6400	Hexagon Nut	1
18	34-6300	Adjusting Block Assembly	1
19	33-8310	14" Saw Chain	1
20	33-8290	14" Guide Bar	1
21	34-6390	Cord Clamp	1

Ref. No.	Part No.	Description	No. Used
22	34-6350	Brush Assembly	2
23	34-6070	Field Assembly	1
24	34-6330	Armature (including ball bearing)	1
25	34-6100	Collar	1
26	34-6110	Pinion	1
27	34-6000	Screw	10
28	34-6230	Right Hand Housing	1
29	34-6040	Flange Nut	1
30	34-6150	Shaft Support Bracket	1
31	34-6240	Sprocket Cover	1
32	34-5980	Spring Washer	1
33	34-5970	Nut	1
34	34-5990	Screw	2
35	34-6250	Spacer	1
36	34-0970	Decal, Toro RH	1
37	34-1460	Decal, Caution	1
38	34-0980	Decal, Chain Saw	1
39	34-0960	Decal, Toro LH	1
40	34-6310	Oil Cap Packing	1

# The Toro Promise

## TORO COMPACT ELECTRIC CHAIN SAW

### A FULL ONE YEAR WARRANTY

*The Toro Company warrants your TORO Product against defects in material or workmanship. During the warranty period, Toro will, at its option, replace a defective product with a new or rebuilt unit, or will repair or replace any defective parts. The following time periods from the date of purchase apply:*

Residential . . . . . 1 Year  
Residential Products Used Commercially . . . 45 Days

*The cost or replacement or repair is included, but the customer pays the transportation costs.*

Should you feel your TORO Product is defective and wish to rely on The Toro Promise, you may return it to:

1. The original place of purchase
- OR
2. A TORO Electrical Service Dealer
- OR
3. The Toro Service Center  
Galahad Road and Wisconsin Street  
North Hudson, WI 54016  
(Postage Prepaid)

Upon return of your unit to one of the above, it will be inspected and you will be advised whether the product is defective. If defective, arrangements will be made for repair or replacement without extra charge to you.

If for any reason you are dissatisfied with the analysis of the defect or the service performed, you may contact us.

Write: TORO Consumer Service Department  
8111 Lyndale Avenue South  
Minneapolis, MN 55420

THERE IS NO OTHER EXPRESS WARRANTY.

THE TORO COMPANY IS NOT LIABLE FOR INDIRECT OR CONSEQUENTIAL DAMAGES IN CONNECTION WITH THE USE OF THE PRODUCT.

Some states do not allow the exclusion or limitation of incidental or consequential damages, so the above limitation or exclusion may not apply to you.

This Warranty applies only to parts or components which are defective and does not cover repairs necessary due to normal wear, misuse, accidents, or lack of proper maintenance. Regular, routine maintenance of the unit to keep it in proper operating condition is the responsibility of the owner.

All warranty repairs reimbursable under The Toro Promise must be performed by a TORO Electrical Service Dealer using Toro approved replacement parts.

Repairs or attempted repairs by anyone other than a TORO Electrical Service Dealer are not reimbursable under The Toro Promise. In addition, these unauthorized repair attempts may result in additional malfunctions, the correction of which is not covered by warranty.

This warranty gives you specific legal rights, and you may also have other rights which vary from state to state.

#### COUNTRIES OTHER THAN THE UNITED STATES OR CANADA

Customers who have purchased TORO products exported from the United States or Canada should contact their TORO Distributor (Dealer) to obtain guarantee policies for your country, province or state. If for any reason you are dissatisfied with your Distributor's service or have difficulty obtaining guarantee information, contact

the TORO importer. If all other remedies fail, you may contact us at The Toro Company.

International Group  
Service Department  
One Corporate Center  
7401 Metro Boulevard  
Minneapolis, Minnesota 55435 U.S.A.