

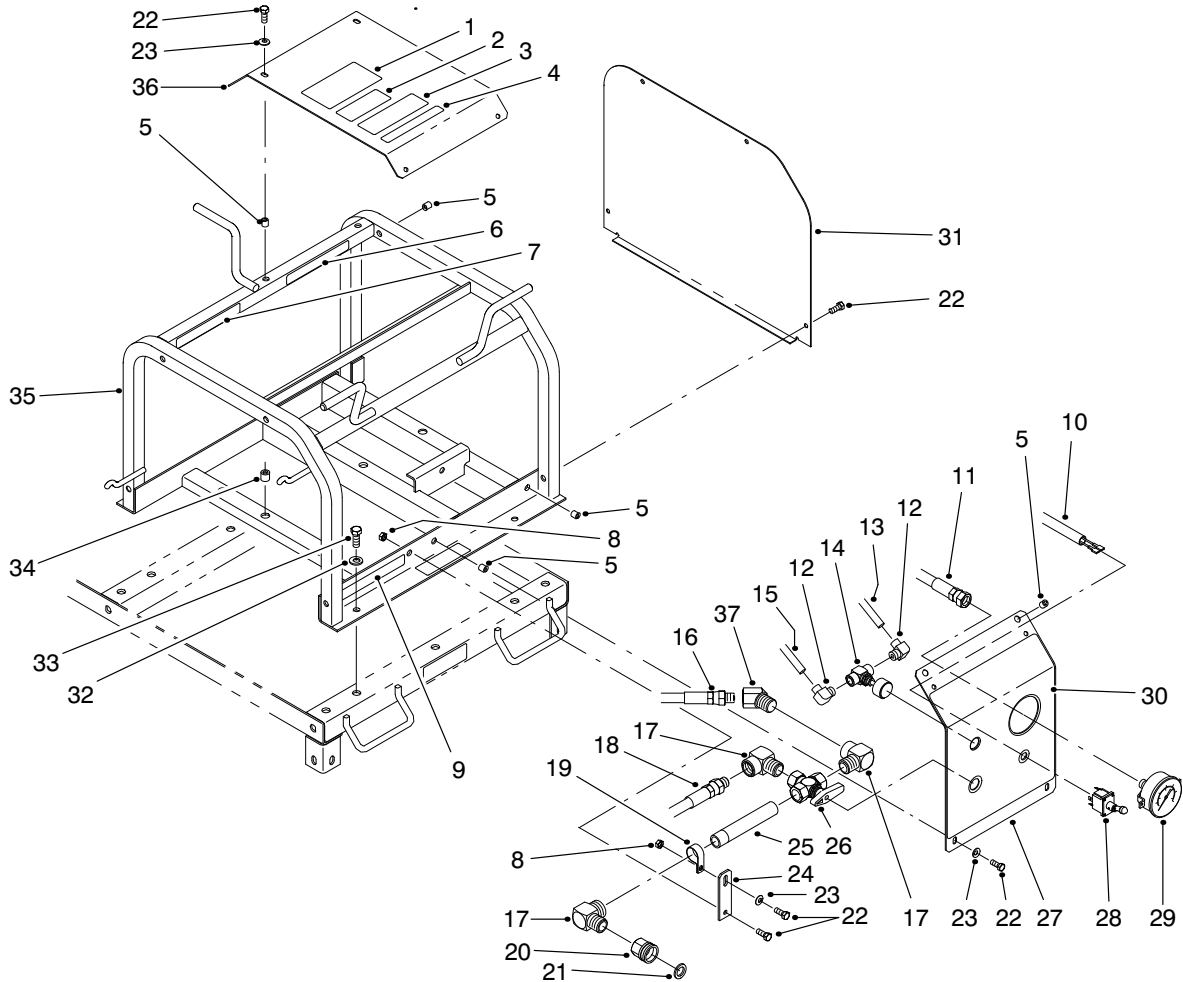


MODEL NO. 07346-40001 & UP

PARTS
CATALOG

1/3 AREA PRESSURE WASHER

For Workman 3000 Series

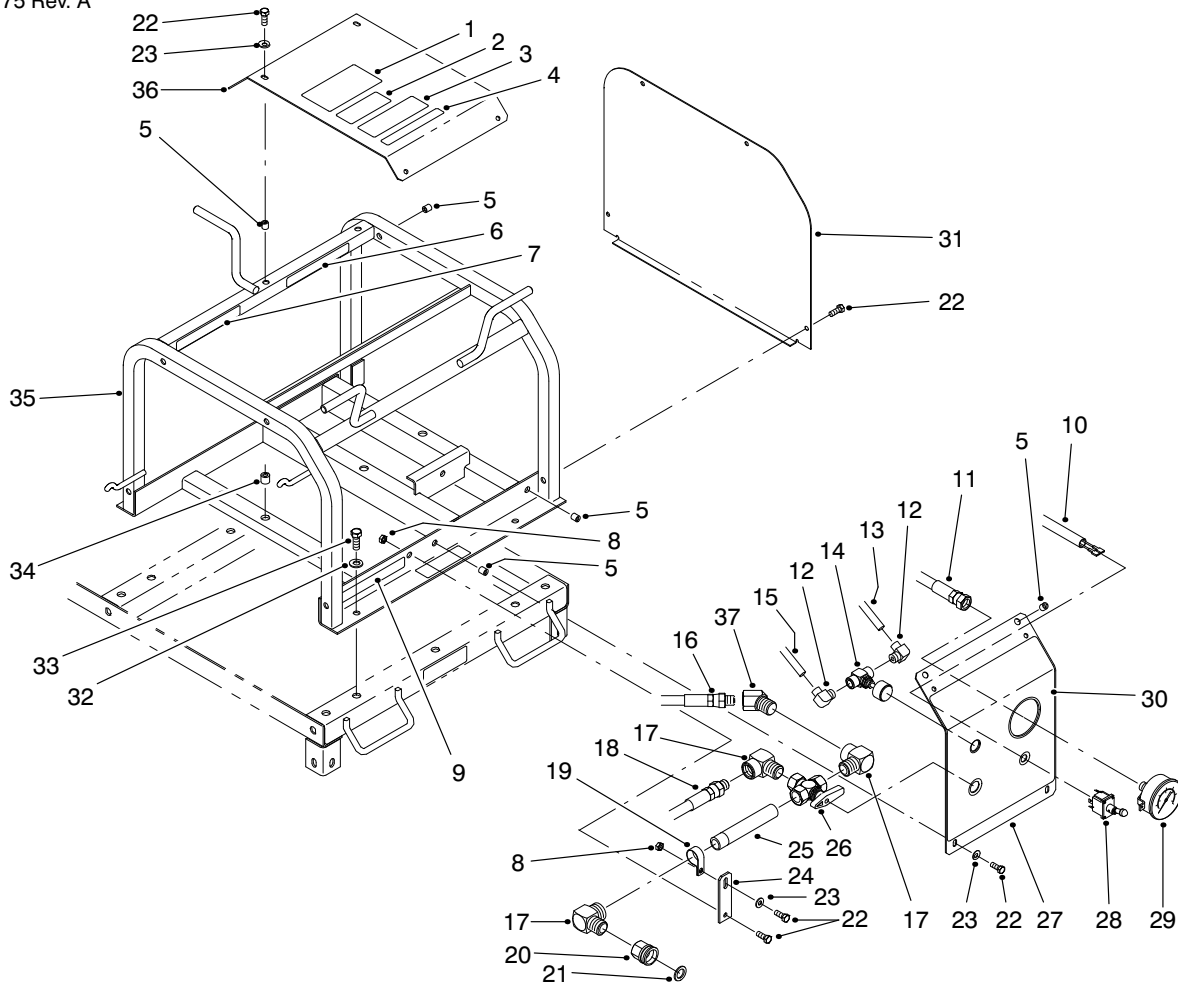


T-1922-2

FRAME & CONTROL PANEL ASSEMBLY

Ref. No.	Part No.	Description	No. Used
1	93-1310	Decal-Danger	1
2	93-1311	Decal-Warning	1
3	80-8040	Decal-Caution	1
4	65-3090	Decal-Manual	1
5	32148-6	Insert-Threaded	12
6	85-8880	Decal-Shield Missing	1
7	92-2819	Decal-Important	1
8	32146-17	Nut-Hex.	2
9	92-2826	Decal-Important	2
10	93-3133	Harness-Wire	1
11	93-1335	Assembly-Hose	1
12	304-96	Fitting-90°	2
13	93-1338	Hose	1
14	93-1324	Valve-Needle	1
15	93-1337	Hose	1
16	93-1334	Hose ASSEMBLY	1
17	93-1339	Fitting-90°	3

Ref. No.	Part No.	Description	No. Used
18	93-1333	Assembly-Hose	1
19	2412-106	Clamp-R	1
20	92-2803	Fitting-Adaptor	1
21	3290-494	Washer-Rubber	1
22	321-4	Screw-HH	16
23	3256-22	Washer-Flat	7
24	93-3134	Support-Pipe	1
25	289-37	Nipple-Pipe	1
26	93-1323	Valve-Selector	1
27	92-2811	Assembly-Control Panel (Incl. Ref. #5 & 30)	1
28	85-4980	Switch-Power-Take-Off	1
29	93-1314	Gauge-3000 psi.	1
30	93-1312	Decal-Control Panel	1
31	93-1308	Shield-Belt	1
32	3256-24	Washer-Flat	4
33	323-6	Screw-HH	4

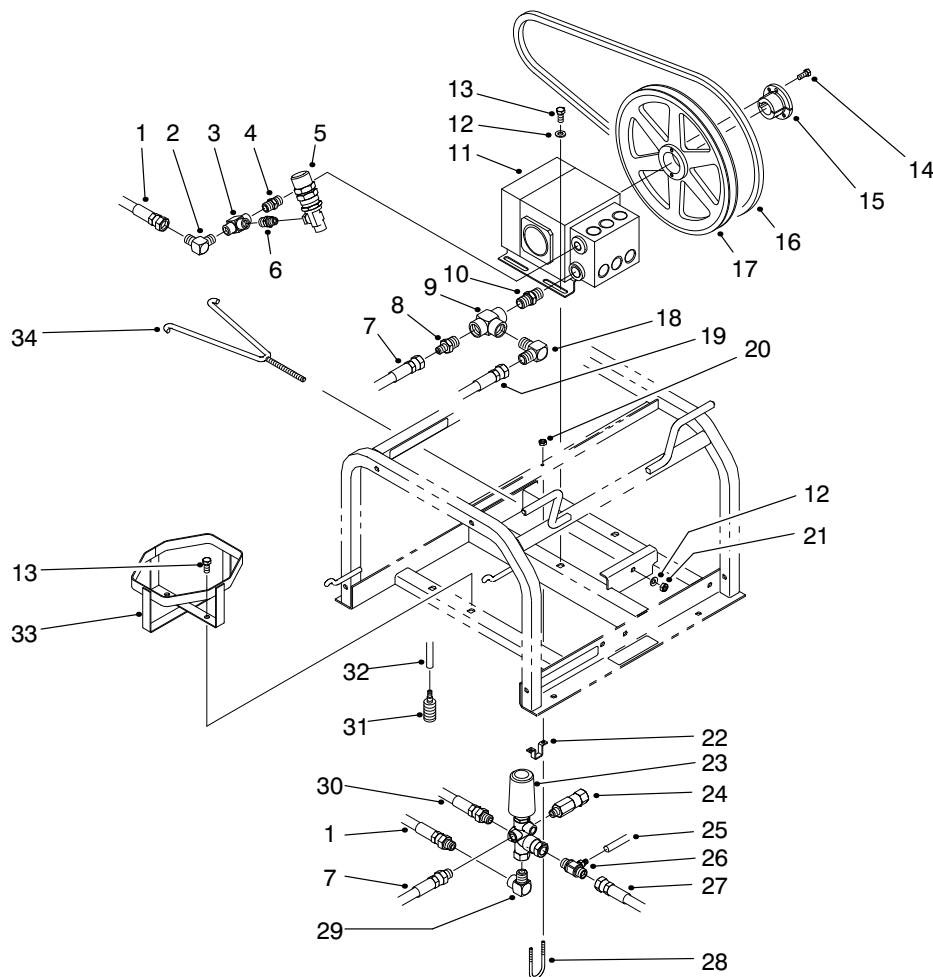


T-1922-2

FRAME & CONTROL PANEL ASSEMBLY (Continued)

Ref. No.	Part No.	Description	No. Used
34	32148-7	Insert-Threaded	6
35	92-2809	Assembly-Frame (Incl. Ref. #5-7, 9 & 34)	1

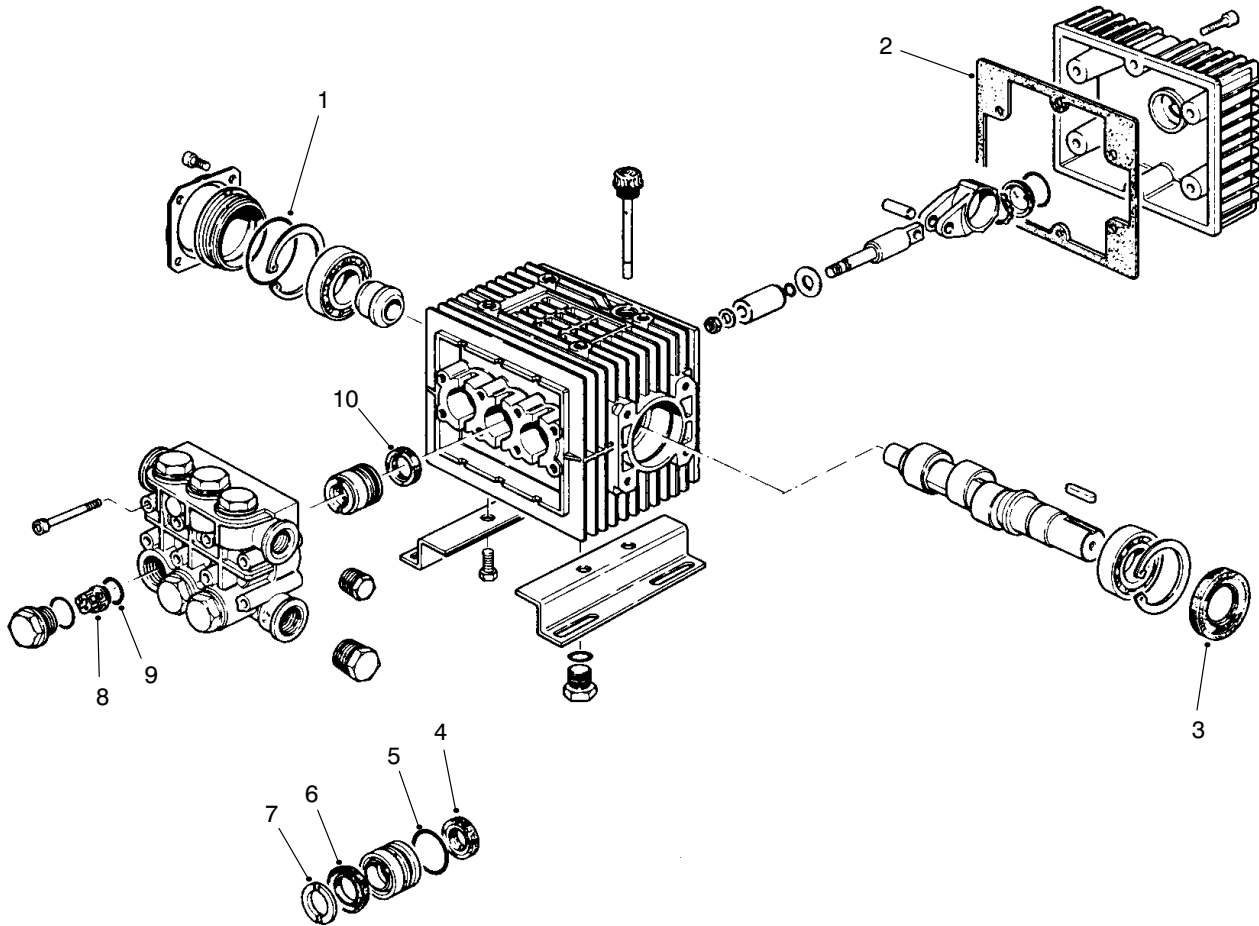
Ref. No.	Part No.	Description	No. Used
36	92-2810	Assembly-Top Shield (Incl. Ref. #1-4)	1
37	93-3936	Fitting-45°	1



T-1923-1

PUMP DRIVE ASSEMBLY

Ref. No.	Part No.	Description	No. Used	Ref. No.	Part No.	Description	No. Used
1	93-1332	Assembly-Hose	1	18	93-1341	Fitting-90°	1
2	93-1343	Fitting-90°	1	19	93-1333	Assembly-Hose	1
3	93-1349	Fitting-Tee	1	20	32153-1	Nut-Lock	2
4	93-1348	Fitting-Adaptor	1	21	3296-29	Nut-Lock	1
5	93-1319	Valve-Safety Relief	1	22	93-3136	Bracket-Clamp	1
6	93-1347	Fitting-Adaptor	1	23	93-1318	Valve-Unloader	1
7	93-1331	Hose-Bypass	1	24	93-1325	Valve-Thermal Relief	1
8	93-1346	Fitting-Adaptor	1	25	93-1337	Hose	1
9	92-2802	Fitting-Tee	1	26	93-1320	Injector-Chemical	1
10	93-1345	Fitting-Adaptor	1	27	93-1326	Hose-High-Pressure	1
11	93-1301	Assy.-High-Pressure Pump	1	28	93-3135	Bolt-Clamp	1
12	3256-23	Washer-Flat	1	29	93-1340	Fitting-90°	1
13	322-3	Screw-HH	6	30	93-1335	Assembly-Hose	1
14	321-4	Screw-HH	2	31	93-1322	Strainer-Line	1
15	93-1303	Bushing-Taper Lock	1	32	93-1338	Hose	1
16	93-1304	Belt-V	1	33	93-13120	Holder-Chemical	1
17	93-1302	Pulley	1	34	93-1305	Tension-Pump	1



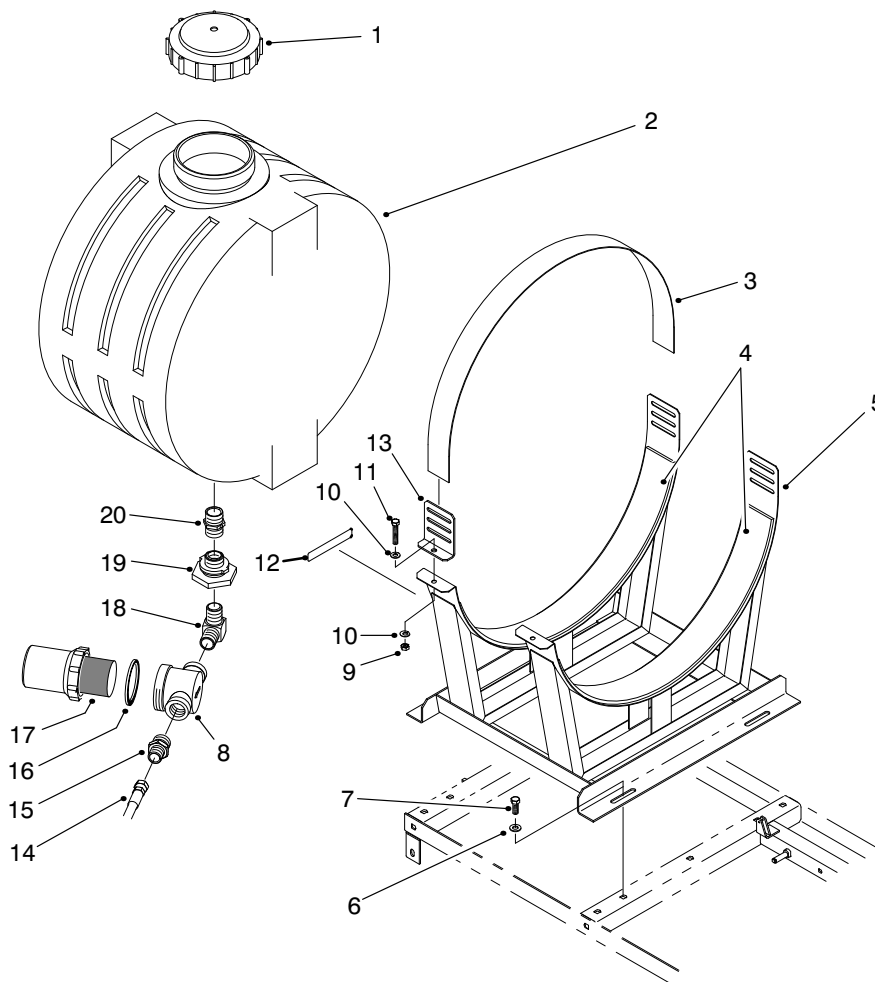
T-1888-1

HIGH-PRESSURE PUMP ASSEMBLY NO. 93-1301

Ref. No.	Part No.	Description	No. Used
1		O-Ring	1
2		Gasket	1
3		Seal-Shaft	1
4		Vacuum	3
5		O-Ring	3
6		Cup	3
7		Spreader-Cup	3
8		Assembly-Valve	6

Ref. No.	Part No.	Description	No. Used
9		O-Ring	6
10		Seal-Oil	3
*	92-2804	Kit-Seal (Incl. Ref. #1-3 & 10)	1
*	92-2806	Kit-Packing (Incl. Ref. #4-7)	1
*	92-2805	Kit-Valve (Incl. Ref. #8-9)	1

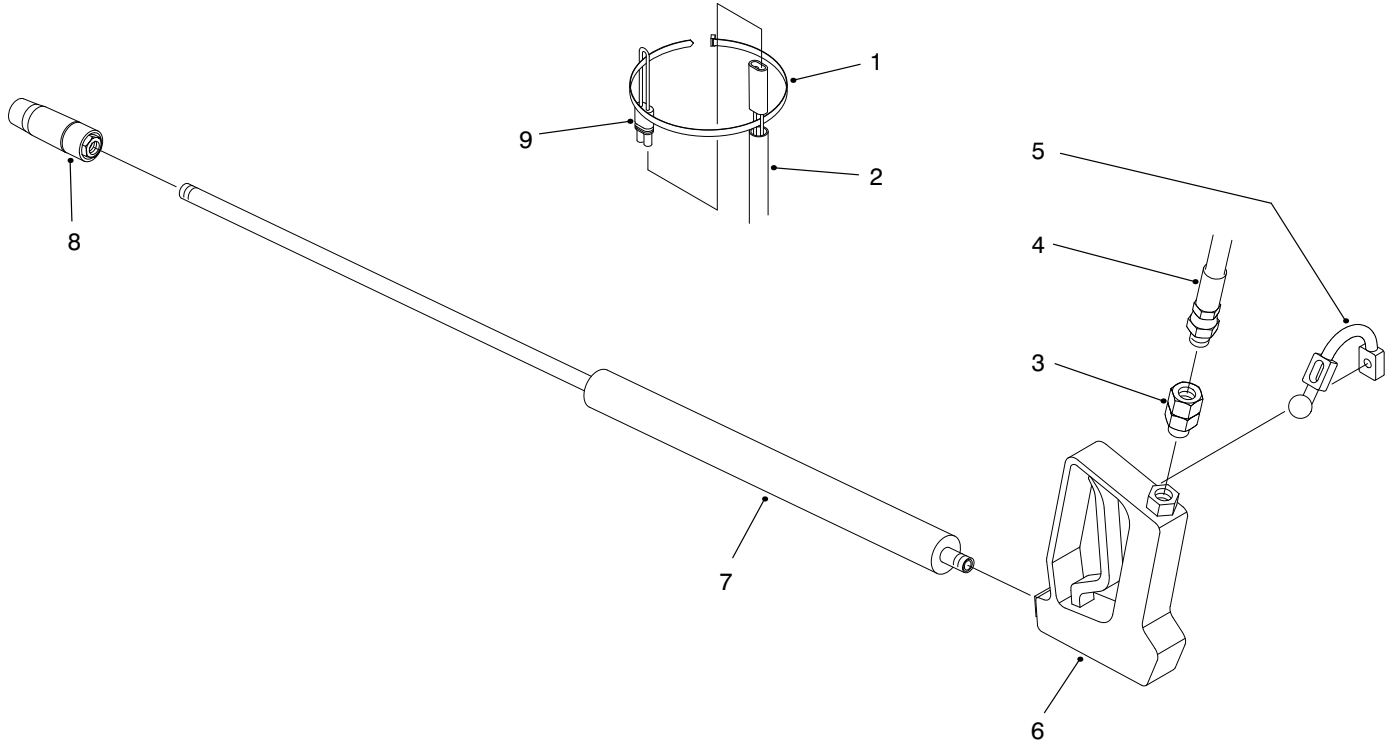
*Not Illustrated



T-1925-1

WATER TANK ASSEMBLY

Ref. No.	Part No.	Description	No. Used	Ref. No.	Part No.	Description	No. Used
1	93-1329	Cover-Tank	1	10	3256-23	Washer-Flat	4
2	93-1327	Assembly-Water Tank (Incl. Ref. #1 & 19)	1	11	322-41	Screw-HH	2
3	92-2815	Strap-Saddle	2	12	92-2826	Decal-Important	
4	93-3132	Pad-Saddle	2	13	93-3131	Bracket-Saddle	2
5	92-2828	Assembly-Saddle (Incl. Ref. #12)	1	14	93-1334	Assembly-Hose	1
6	3256-24	Washer-Flat	4	15	93-1344	Fitting-Adaptor	1
7	323-6	Screw-HH	4	16	92-2808	Gasket-Strainer	1
8	93-1321	Asse,bly-Strainer (Incl. Ref. #16 & 17)	1	17	92-2807	Screen-Strainer	1
9	3296-29	Nut-Lock	2	18	93-1342	Fitting-90°	1
				19	93-1328	Fitting-Tank	1
				20	93-3124	Nipple-Standpipe	1

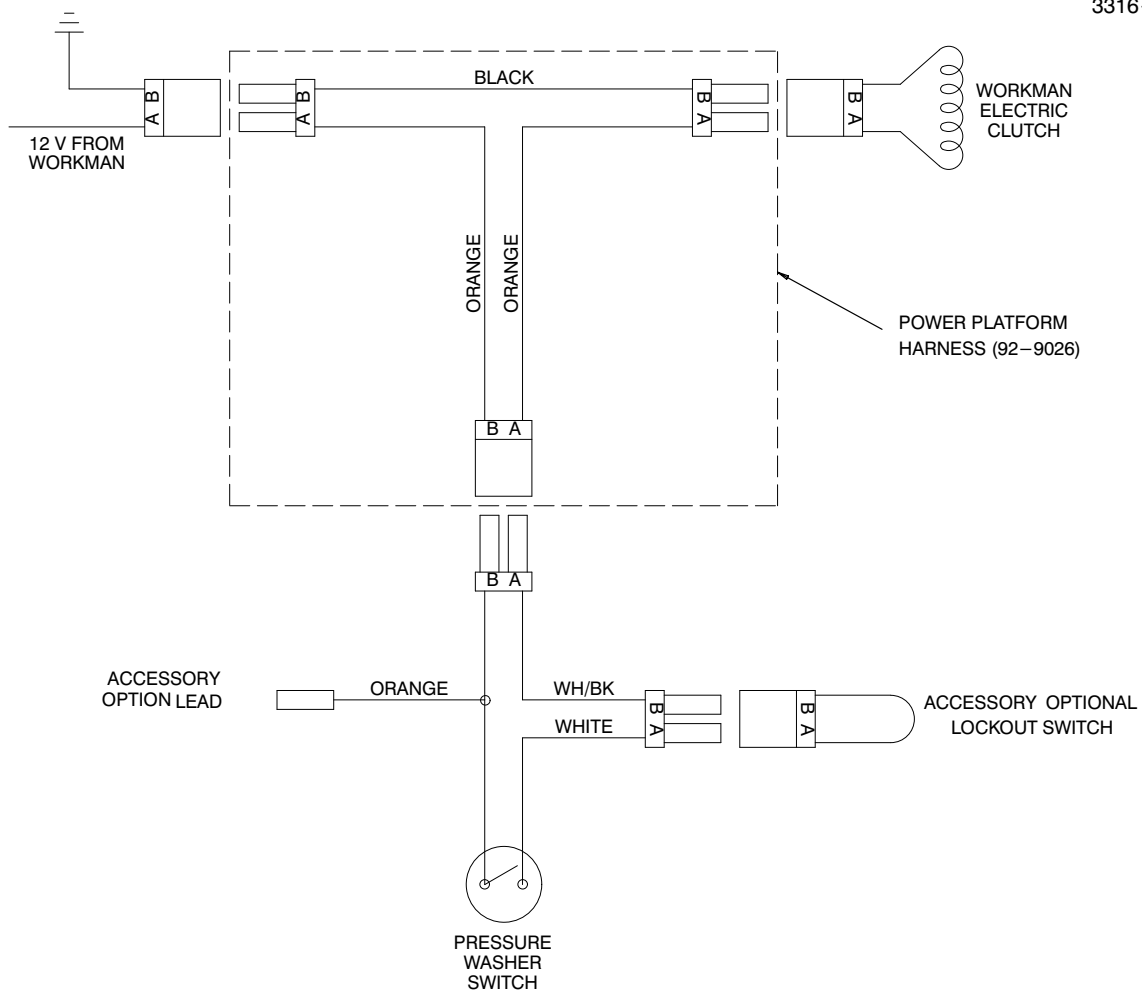


T-1924-1

HIGH-PRESSURE LANCE ASSEMBLY

Ref. No.	Part No.	Description	No. Used
1	3290-379	Tie-Cable	3
2	93-3133	Harness-Wire	1
3	93-1336	Fitting-Swivel	1
4	93-1326	Hose-High-Pressure	1
5	42198	Hold-Down-Rubber	2

Ref. No.	Part No.	Description	No. Used
6	93-1315	Gun-High Pressure	1
7	93-1316	Lance-36"	1
8	93-1317	Nozzle	1
9	92-9027	Harness-Wire	1

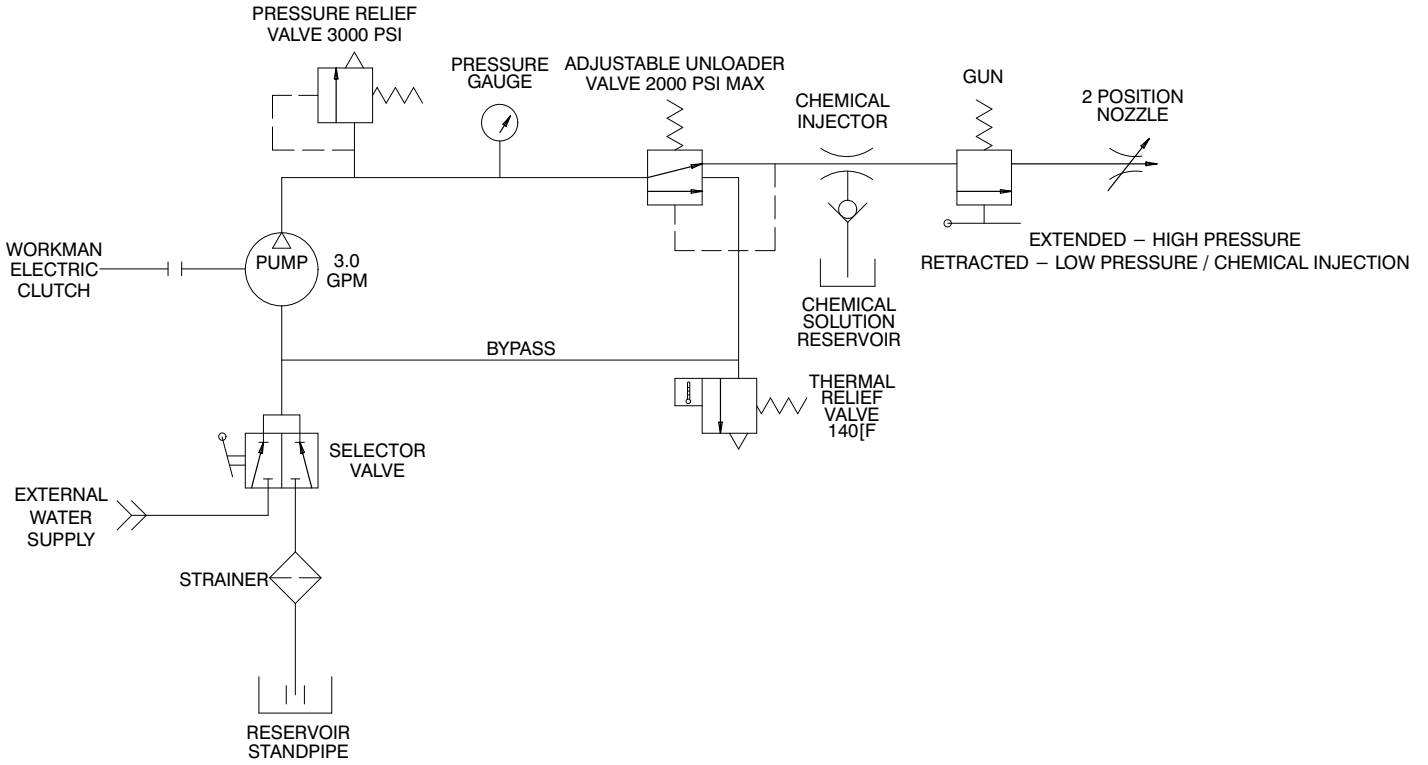


T-1927-1

ELECTRICAL SCHEMATIC

Ref. No.	Part No.	Description	No. Used

Ref. No.	Part No.	Description	No. Used



T-1926-1

WATER SYSTEM SCHEMATIC

Ref. No.	Part No.	Description	No. Used

Ref. No.	Part No.	Description	No. Used

TORO PART NUMBER INDEX

3316-775 Rev. A

Part No.	Description	Pg. No.	Ref. No.	Qty.	Part No.	Description	Pg. No.	Ref. No.	Qty.
42198	Hold-Down-Rubber	6	5	2	93-1334	Hose ASSEMBLY	1	16	1
65-3090	Decal-Manual	1	4	1	93-1335	Assembly-Hose	1	11	1
80-8040	Decal-Caution	1	3	1	93-1335	Assembly-Hose	3	30	1
85-4980	Switch-Power-Take-Off	1	28	1	93-1336	Fitting-Swivel	6	3	1
85-8880	Decal-Shield Missing	1	6	1	93-1337	Hose	1	15	1
92-2802	Fitting-Tee	3	9	1	93-1337	Hose	3	25	1
92-2803	Fitting-Adaptor	1	20	1	93-1338	Hose	1	13	1
92-2804	Kit-Seal	4	*	1	93-1338	Hose	3	32	1
92-2805	Kit-Valve	4	*	1	93-1339	Fitting-90°	1	17	3
92-2806	Kit-Packing	4	*	1	93-1340	Fitting-90°	3	29	1
92-2807	Screen-Strainer	5	17	1	93-1341	Fitting-90°	3	18	1
92-2808	Gasket-Strainer	5	16	1	93-1342	Fitting-90°	5	18	1
92-2809	Assembly-Frame	2	35	1	93-1343	Fitting-90°	3	2	1
92-2810	Assembly-Top Shield	2	36	1	93-1344	Fitting-Adaptor	5	15	1
92-2811	Assembly-Control Panel	1	27	1	93-1345	Fitting-Adaptor	3	10	1
92-2815	Strap-Saddle	5	3	2	93-1346	Fitting-Adaptor	3	8	1
92-2819	Decal-Important	1	7	1	93-1347	Fitting-Adaptor	3	6	1
92-2826	Decal-Important	1	9	2	93-1348	Fitting-Adaptor	3	4	1
92-2826	Decal-Important	5	12		93-1349	Fitting-Tee	3	3	1
92-2828	Assembly-Saddle	5	5	1	93-3120	Holder-Chemical	3	33	1
92-9027	Harness-Wire	6	9	1	93-3124	Nipple-Standpipe	5	20	1
93-1301	Assy.-High-Pressure Pump	3	11	1	93-3131	Bracket-Saddle	5	13	2
93-1302	Pulley	3	17	1	93-3132	Pad-Saddle	5	4	2
93-1303	Bushing-Taper Lock	3	15	1	93-3133	Harness-Wire	6	2	1
93-1304	Belt-V	3	16	1	93-3133	Harness-Wire	1	10	1
93-1305	Tension-Pump	3	34	1	93-3134	Support-Pipe	1	24	1
93-1308	Shield-Belt	1	31	1	93-3135	Bolt-Clamp	3	28	1
93-1310	Decal-Danger	1	1	1	93-3136	Bracket-Clamp	3	22	1
93-1311	Decal-Warning	1	2	1	93-3936	Fitting-45°	2	37	1
93-1312	Decal-Control Panel	1	30	1	2412-106	Clamp-R	1	19	1
93-1314	Gauge-3000 psi.	1	29	1	289-37	Nipple-Pipe	1	25	1
93-1315	Gun-High Pressure	6	6	1	304-96	Fitting-90°	1	12	2
93-1316	Lance-36"	6	7	1	321-4	Screw-HH	3	14	2
93-1317	Nozzle	6	8	1	321-4	Screw-HH	1	22	16
93-1318	Valve-Unloader	3	23	1	322-3	Screw-HH	3	13	6
93-1319	Valve-Safety Relief	3	5	1	322-41	Screw-HH	5	11	2
93-1320	Injector-Chemical	3	26	1	323-6	Screw-HH	5	7	4
93-1321	Assembly-Strainer	5	8	1	323-6	Screw-HH	1	33	4
93-1322	Strainer-Line	3	31	1	3256-22	Washer-Flat	1	23	7
93-1323	Valve-Selector	1	26	1	3256-23	Washer-Flat	5	10	4
93-1324	Valve-Needle	1	14	1	3256-23	Washer-Flat	3	12	1
93-1325	Valve-Thermal Relief	3	24	1	3256-24	Washer-Flat	5	6	4
93-1326	Hose-High-Pressure	6	4	1	3256-24	Washer-Flat	1	32	4
93-1326	Hose-High-Pressure	3	27	1	3290-379	Tie-Cable	6	1	3
93-1327	Assembly-Water Tank	5	2	1	3290-494	Washer-Rubber	1	21	1
93-1328	Fitting-Tank	5	19	1	3296-29	Nut-Lock	5	9	2
93-1329	Cover-Tank	5	1	1	3296-29	Nut-Lock	3	21	1
93-1331	Hose-Bypass	3	7	1	32146-17	Nut-Hex.	1	8	2
93-1332	Assembly-Hose	3	1	1	32148-6	Insert-Threaded	1	5	12
93-1333	Assembly-Hose	1	18	1	32148-7	Insert-Threaded	2	34	6
93-1333	Assembly-Hose	3	19	1	32153-1	Nut-Lock	3	20	2
93-1334	Assembly-Hose	5	14	1					

*Not Illustrated

PRODUCT CHANGES

In an effort to make improvements available to TORO owners as quickly as possible, minor changes are incorporated into Toro's products from time to time that do not become immediately shown in the Parts Catalog. If such a change has been made in your unit, which is not reflected in your manual, see your TORO Distributor or his Authorized TORO Service Dealer for information and part numbers.

IDENTIFICATION AND ORDERING

MODEL AND SERIAL NUMBERS

The High–Pressure Washer has two identification numbers; a model number and a serial number. The two numbers are stamped on a plate which is located on the main frame under the control panel. In any correspondence concerning the High–Pressure Washer, supply model and serial numbers to assure that correct information and replacement parts are obtained.

To order replacement parts from an Authorized TORO Service Dealer, supply the following information:

1. Model and serial number of the High–Pressure Washer.
2. Part number, description, and the quantity of part(s) desired.

NOTE: Do not order by reference number if a parts catalog is being used; use the PART NUMBER.

TABLE OF CONTENTS

Description	Page	Description	Page
Frame & Control Panel Assembly	1–2	High–Pressure Lance Assembly	6
Pump Drive Assembly	3	Electrical Schematic	7
High–Pressure Pump Assembly No. 93–1301	4	Water System Schematic	8
Water Tank Assembly	5		

