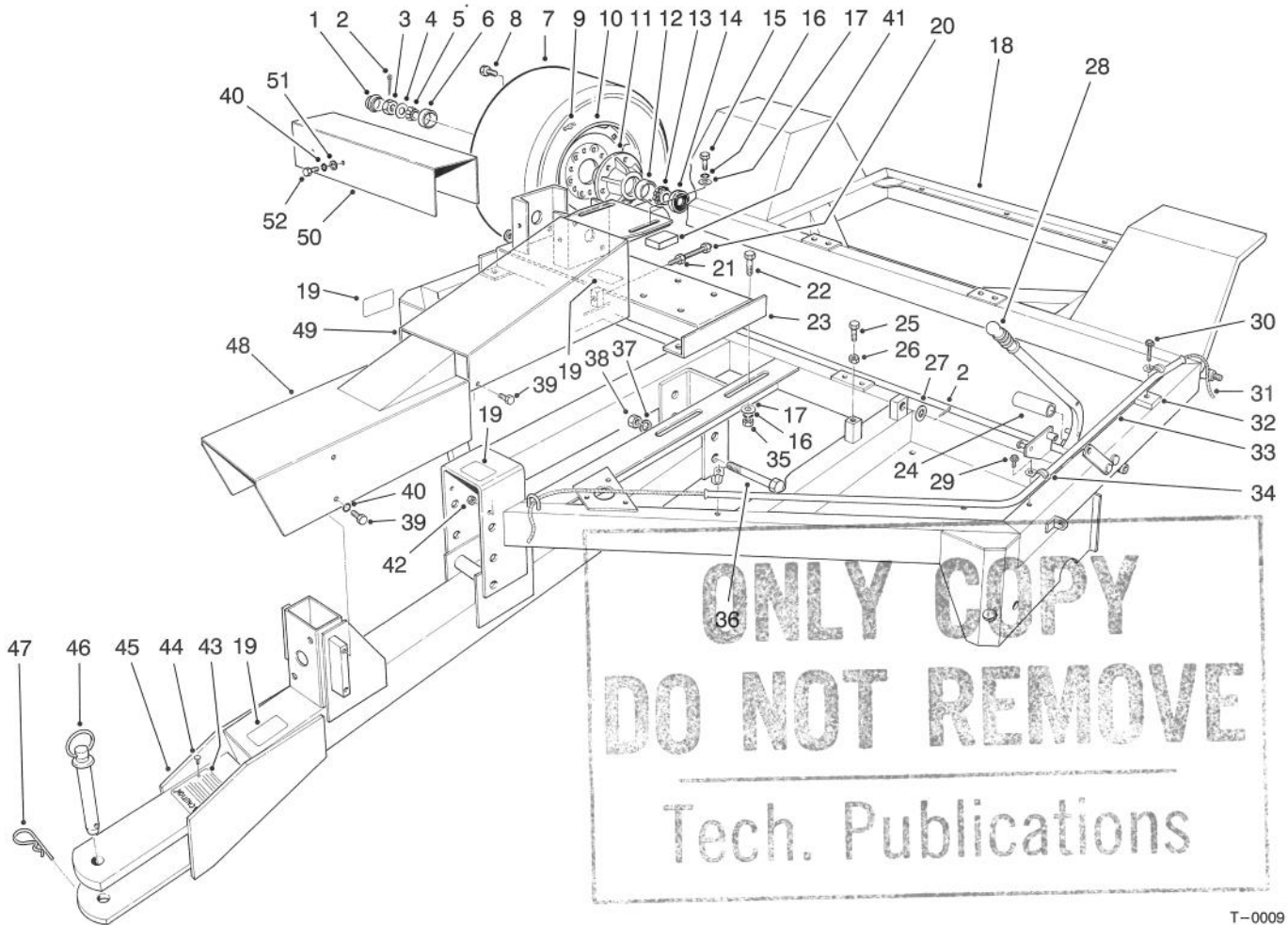




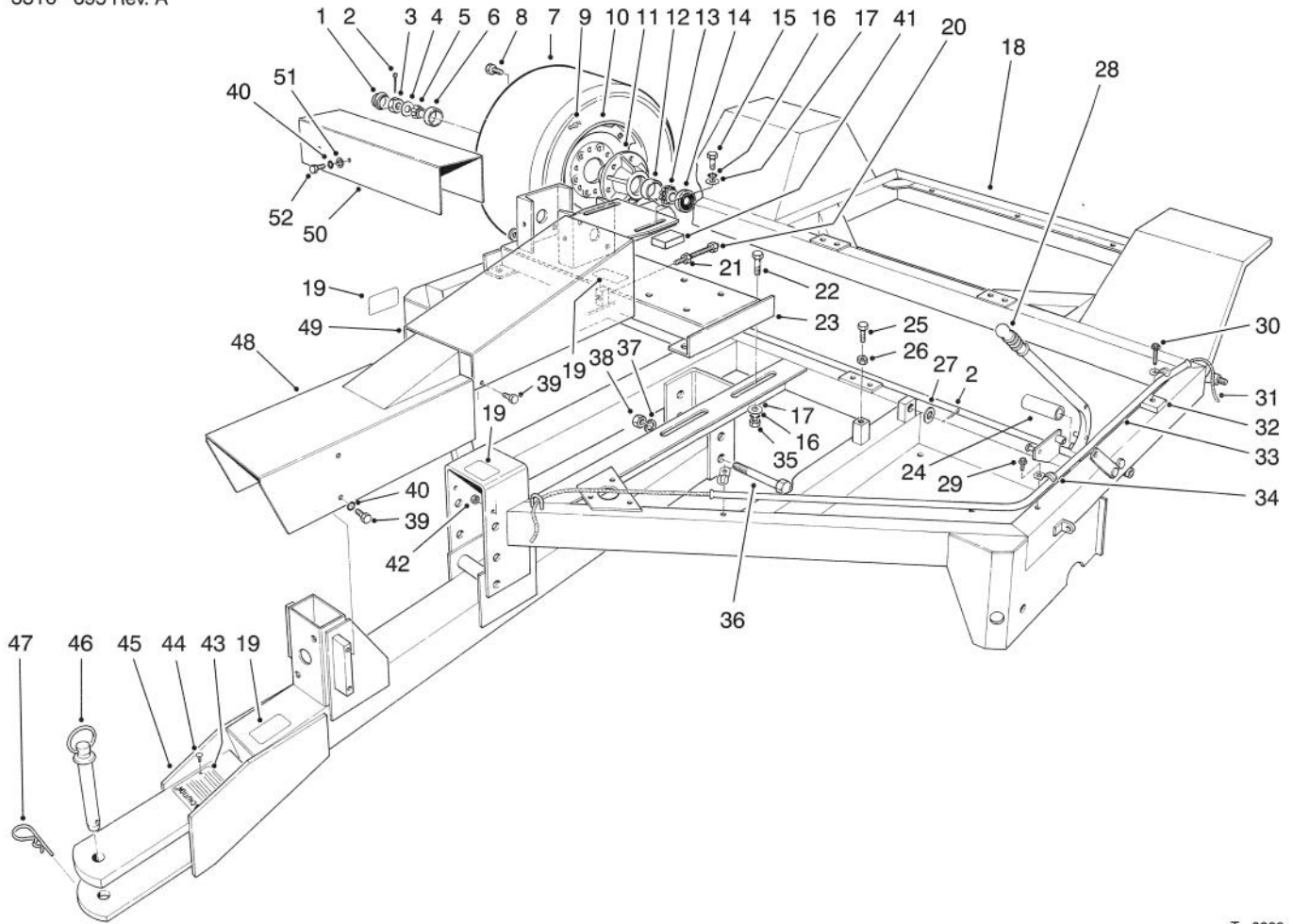
<b>MODEL NO. 07050-50001 &amp; UP</b> <b>MODEL NO. 07052-50001 &amp; UP</b>	<b>PARTS</b> <b>CATALOG</b>
<b>66" RAKE-O-VAC® SWEEPER</b>	



T-0009

### FRAME ASSEMBLY (Model No. 07052)

Ref. No.	Part No.	Description	No. Used	Ref. No.	Part No.	Description	No. Used
1	242-55	Cap - Hub	2	18	13-6120	Frame	1
2	3272-17	Pin - Cotter	3	19	67-5360	Decal - Caution	4
3	32136-1	Nut - Slotted	2	20	13-6240	Rod - Adjustment	1
4	3256-29	Washer - Flat	2	21	3218-6	Nut - Jam	1
5	254-62	Cone - Bearing	2	22	325-5	Screw - Cap Hex. Hd.	4
6	254-61	Cup - Bearing	2	23	13-6000	Base - Box, Gear	1
7	93-0181	Tire	2	24	3-3107	Hose	1
8	217-103	Bolt - Wheel	12	25	323-8	Screw - Cap Hex. Hd.	1
9	232-27	Stem - Valve	2	26	3218-3	Nut - Jam	1
10	93-0182	Wheel Assembly	2	27	3256-28	Washer - Flat	1
11	242-54	Wheel - Hub (Incl. Ref. #6 & 12)	2	28	235-15	Grip - Handle	1
12	254-66	Cup - Bearing	2	29	32104-95	Screw - Self-Tapping	2
13	254-65	Cone - Bearing	2	30	32104-96	Screw - Self-Tapping	1
14	253-127	Seal	2	31	20-9580	Rope - Latch	1
15	325-3	Screw - Cap Hex. Hd.	2	32	13-6910	Spacer - Guide, Rope	1
16	3253-7	Washer - Lock	6	33	13-6890	Guide - Rope	1
17	3256-26	Washer - Flat	6	34	2412-40	Clamp - Conduit	3
				35	3217-9	Nut - Hex	4

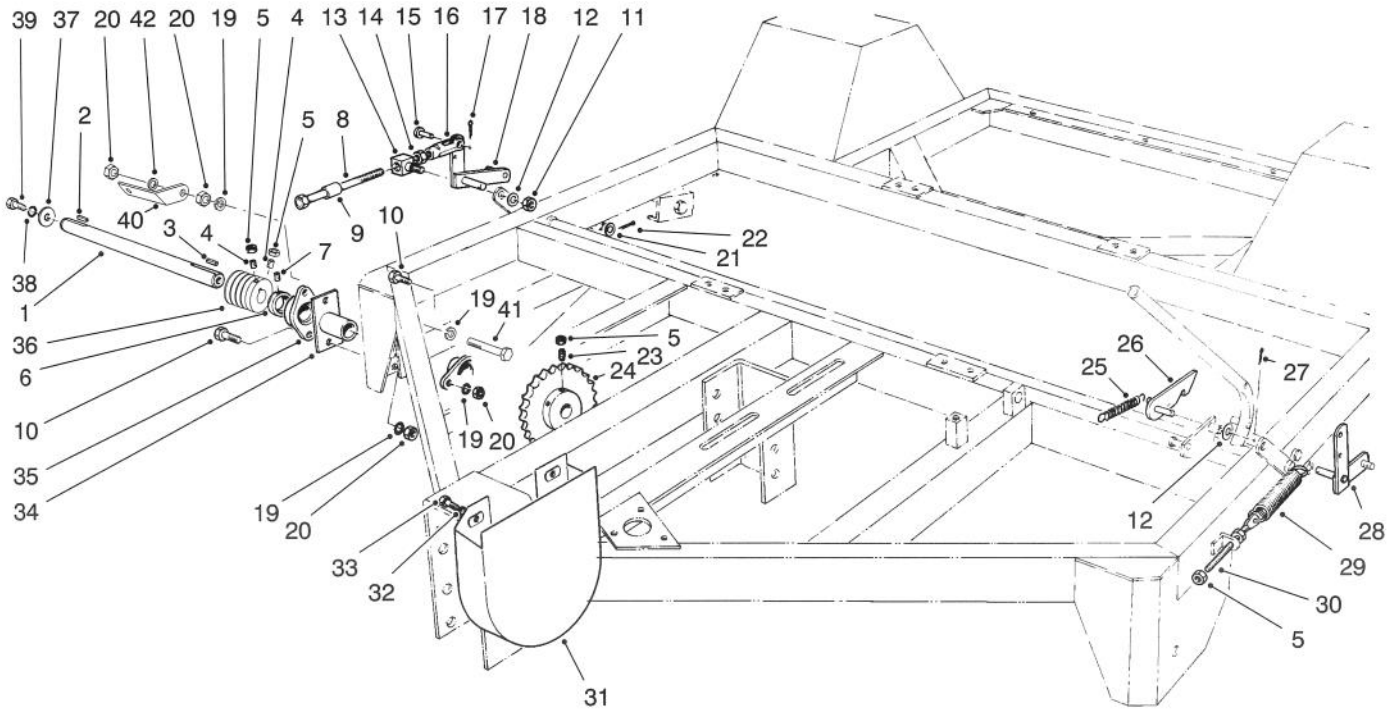


T-0009

## FRAME ASSEMBLY (Model No. 07052)

Ref. No.	Part No.	Description	No. Used
36	328-23	Bolt - Hex. Hd.	2
37	3253-9	Washer - Lock	2
38	3217-12	Nut - Hex	2
39	323-2	Screw - Cap Hex. Hd.	6
40	3253-21	Washer - Lock	6
41	93-7709	Pad	1
42	32153-2	Nut - Lock	2
43	13-7460	Plate - Caution, Hitch	1
44	3259-15	Screw - Drive	4
45	13-4310	Tongue	1

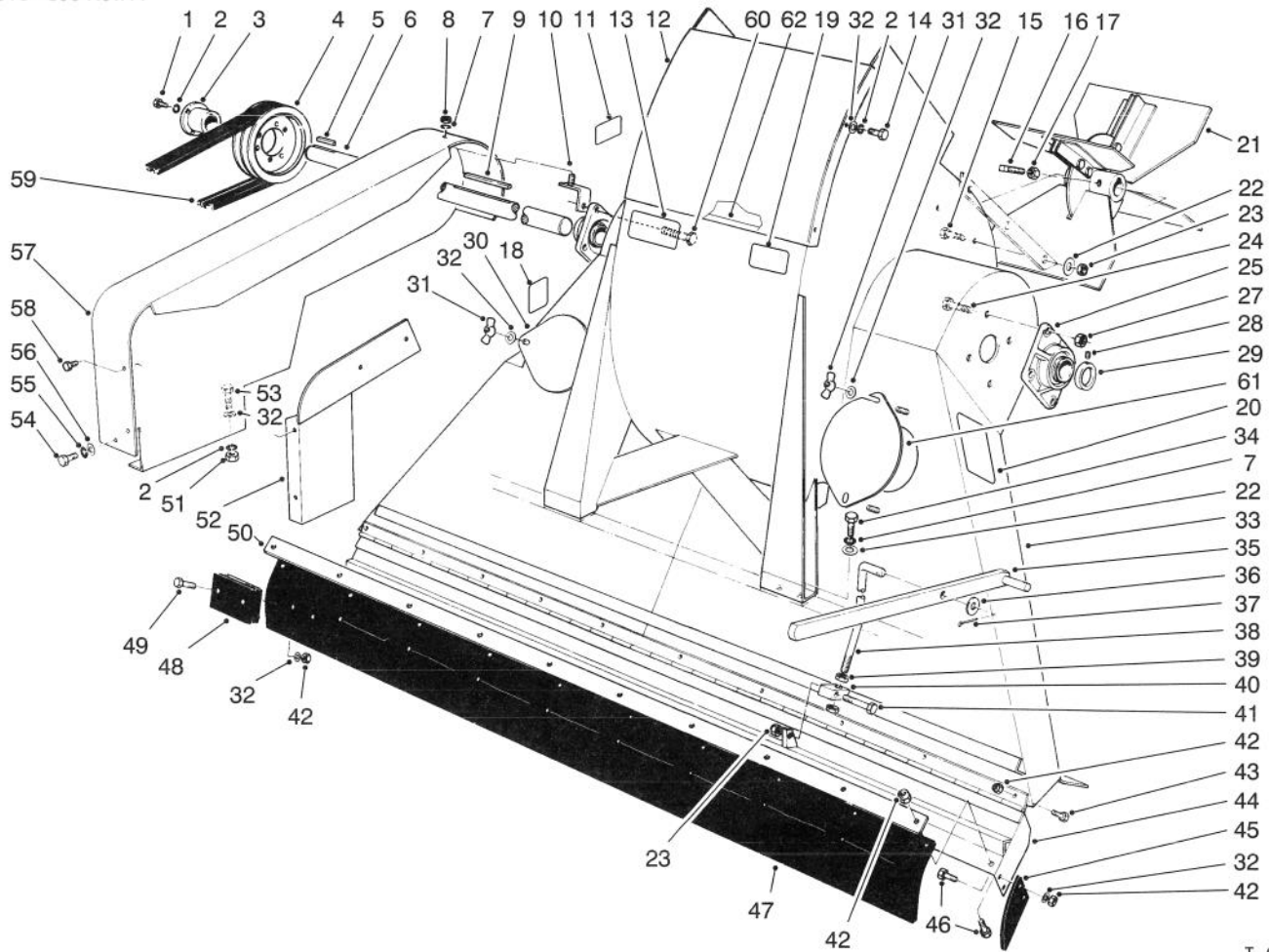
Ref. No.	Part No.	Description	No. Used
46	13-6200	Pin - Hitch (Incl. Ref. #47)	1
47	3290-343	Pin - Hair, Cotter	1
48	13-5870	Shield - Front	1
49	13-5880	Shield - Shaft, Drop	1
50	13-5790	Shield - Shaft, Side	1
51	3256-24	Washer - Flat	4
52	325-5	Screw - Cap Hex. Hd.	4



T-0011

## JACKSHAFT & LIFTING MECHANISM (Model No. 07052)

Ref. No.	Part No.	Description	No. Used	Ref. No.	Part No.	Description	No. Used
1	93-4032	Shaft - Jack	1	23	3247-6	Screw - Set	2
2	68-3220	Key - Square	1	24	13-4880	Sprocket	1
3	5-1718	Key - Square	1	25	13-0480	Spring	1
4	3243-6	Screw - Set	2	26	13-3990	Handle - Trip	1
5	3218-3	Nut - Jam	8	27	3272-10	Pin - Cotter	1
6		Collar - Lock	2	28	13-5500	Bell Crank - Lift, L.H.	1
7		Screw - Set	2	29	13-0050	Spring	2
8	13-6260	Screw W.A.	2	30	13-5530	Rod - Adjustment, Spring	2
9	13-5520	Spacer	2	31	13-4490	Guard - Sheave	1
10	324-7	Screw - Cap Hex. Hd.	3	32	3253-4	Washer - Lock	2
11	32153-2	Nut	2	33	322-7	Screw - Cap Hex. Hd.	2
12	3256-24	Washer - Flat	2	34	63-5210	Spindle - Driveside	1
13	13-0100	Block - Pivot	2	35	56-6230	Bearing	
14	3219-3	Nut - Hex.	2			(Incl. Ref. #6 & 7)	2
15	283-2	Pin - Clevis	2	36	93-4033	Pulley - Driver	1
16	282-22	Clevis	2	37	13-3710	Washer - Special	1
17	3272-10	Pin - Cotter	2	38	3253-3	Washer - Lock	1
18	93-4440	Bell Crank - Lift, R.H.	1	39	321-4	Screw - Cap Hex. Hd.	1
19	3253-6	Washer - Lock	5	40	93-4438	Bracket - Belt Guard	1
20	3217-8	Nut - Hex.	5	41	324-10	Screw - Cap Hex. Hd.	1
21	3256-28	Washer - Flat	2	42	3290-211	Washer - Spring	1
22	3272-22	Pin - Cotter	2				

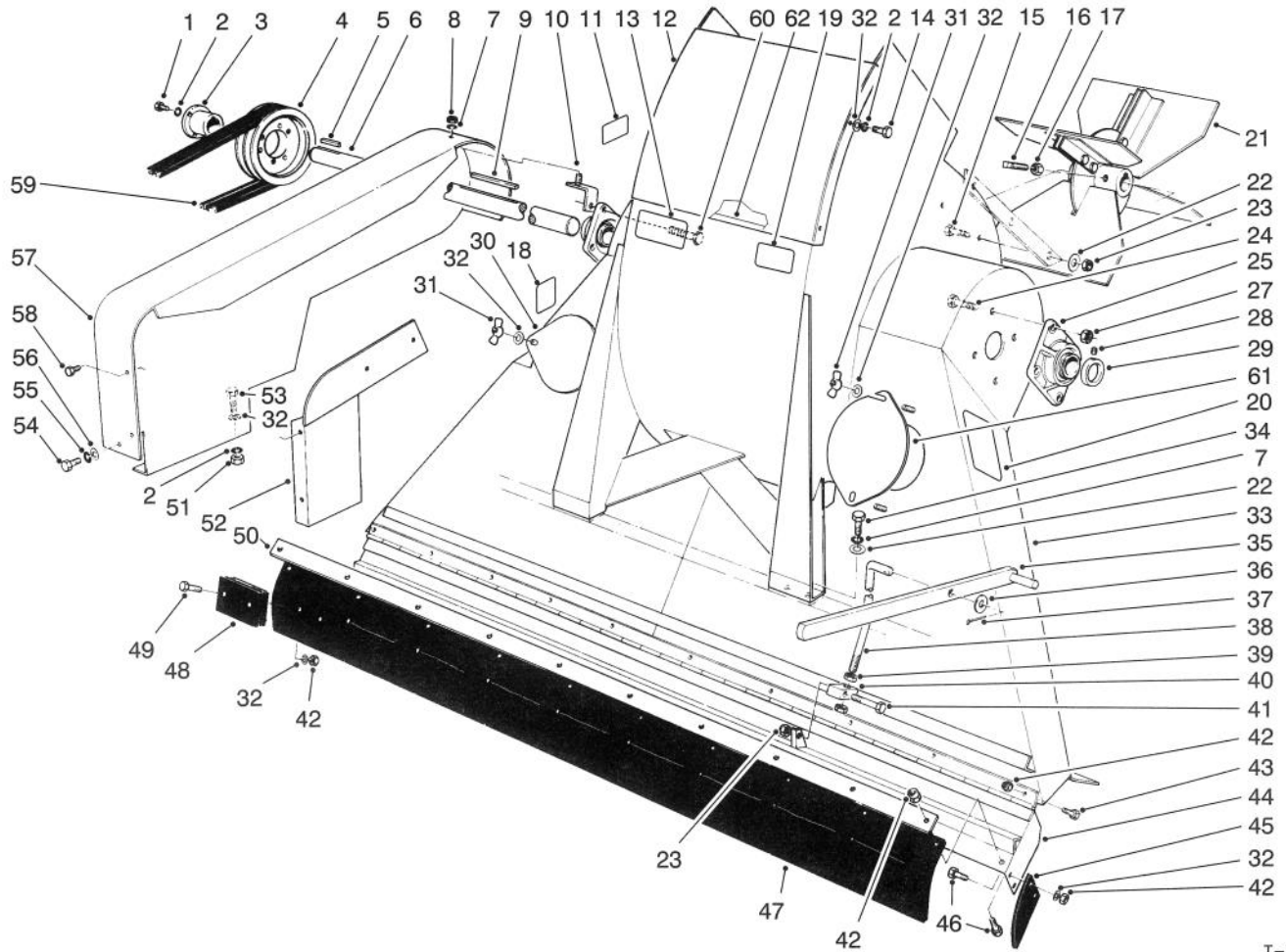


T-0013

## BLOWER & THROAT ASSEMBLY (Model No. 07052)

Ref. No.	Part No.	Description	No. Used
1	321-13	Screw - Cap Hex. Hd.	3
2	3253-3	Washer - Lock	9
3	13-6070	Bushing (Incl. Ref. #1 & 2)	1
4	13-6030	Pulley	1
5	13-2240	Key - Square	1
6	13-3790	Shaft - Fan	1
7	3253-21	Washer - Lock	9
8	3217-7	Nut - Hex	1
9	13-2810	Key - Square	1
10	13-3350	Bracket W.A. - Mounting	1
11	67-5360	Decal	1
12	13-3850	Plate - Blower Access	1
13	13-6410	Decal	1
14	321-4	Screw - Cap Hex. Hd.	4
15	323-7	Screw - Cap Hex. Hd.	6
16	3244-14	Screw - Set, Square Hd.	4
17	3218-5	Nut - Hex.	4
18	92-8309	Decal - Warning	1
19	93-7307	Decal - Warning	1
20	93-4041	Decal - Op. Instructions	1
21	13-3420	Assembly - Fan	1
22	3256-24	Washer - Flat	14
23	3296-39	Nut - Lock	7
24	325-6	Screw - Cap Hex. Hd.	7
25	56-6220	Bearing (Incl. Ref. #28 & 29)	2

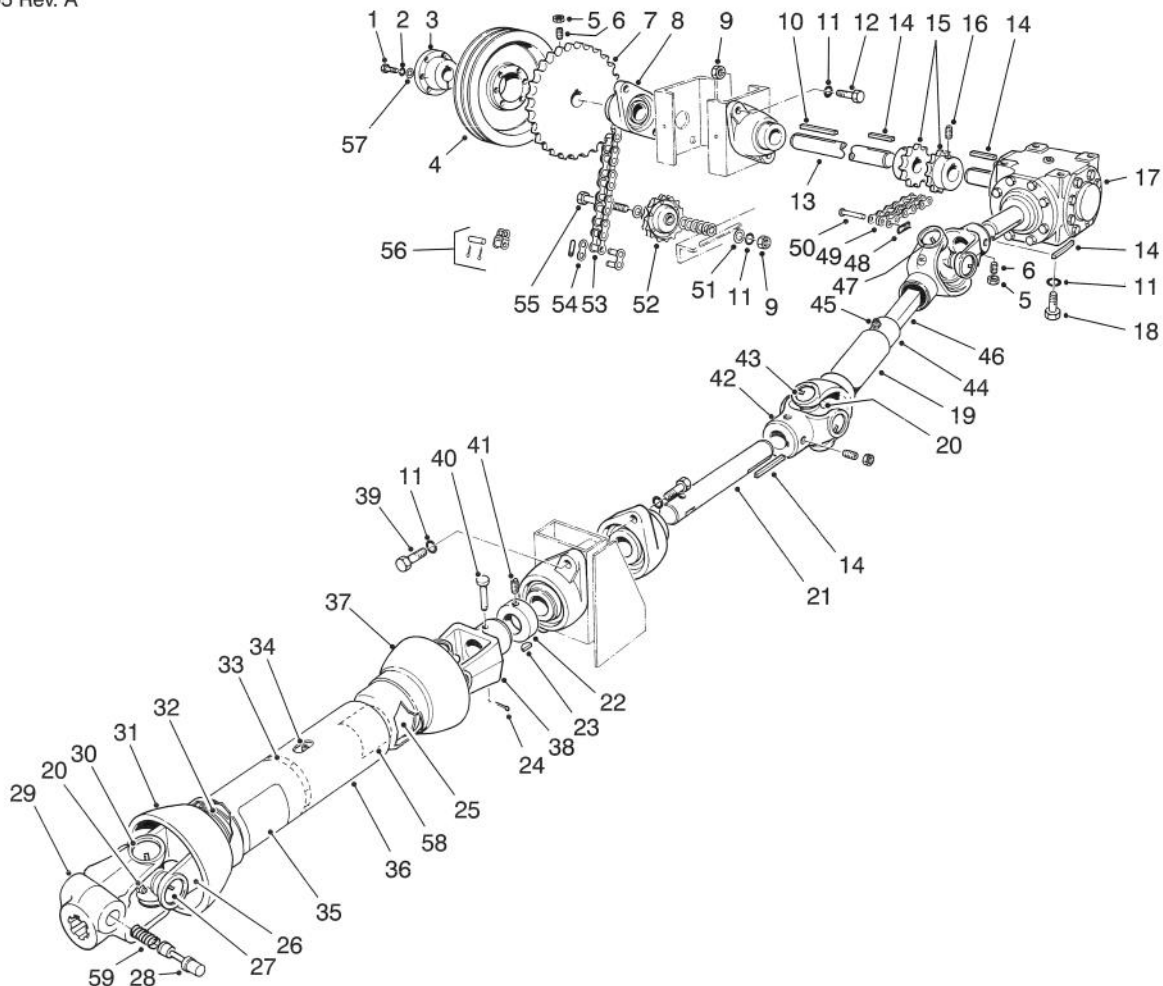
Ref. No.	Part No.	Description	No. Used
27	32153-5	Nut - Lock	8
28		Screw - Set	2
29		Collar - Locking	2
30	13-1420	Cover - Inspection	1
31	32103-12	Nut - Wing	4
32	3256-22	Washer - Flat	32
33	13-6280	Blower and Throat (Incl. Ref. #2, 11-14, 18-20, 30-32 & 61-62)	1
34	323-6	Screw - Cap Hex. Hd.	8
35	13-6390	Handle - Flap	1
36	3256-27	Washer - Flat	1
37	3272-12	Pin - Cotter	1
38	13-6360	Rod - Lift, Flap	1
39	3218-6	Nut - Jam	2
40	13-0330	Block - Pivot	1
41	323-9	Screw - Cap Hex. Hd.	4
42	3296-42	Nut - Lock	42
43	321-3	Screw - Cap Hex. Hd.	10
44	13-4760	Flap - Lower	1
45	13-3130	Flap - End	2
46	321-5	Screw - Cap Hex. Hd.	14
47	13-4700	Flap - Rubber (Incl. Ref. #32, 42, 48 & 49)	1
48	13-4560	Weight - Flap	18
49	321-8	Screw - Cap Hex. Hd.	18
50	13-1390	Retainer - Flap	1



T-0013

## BLOWER & THROAT ASSEMBLY (Model No. 07052) (Continued)

Ref. No.	Part No.	Description	No. Used	Ref. No.	Part No.	Description	No. Used
51	3217-5	Nut - Hex.	2	57	13-4800	Guard - Belt	1
52	13-6090	Cover - Guard, Side	1	58	32104-109	Screw - Cap Hex. Hd.	4
53	321-4	Screw - Cap Hex. Hd.	2	59	13-2640	Belt	1
54	322-1	Screw - Cap Hex. Hd.	1	60	325-7	Screw - Cap Hex. Hd.	1
55	3253-4	Washer - Lock	1	61	93-4020	Cover - Inspection	1
56	3256-23	Washer - Flat	1	62	93-7708	Strip - Sealing	1

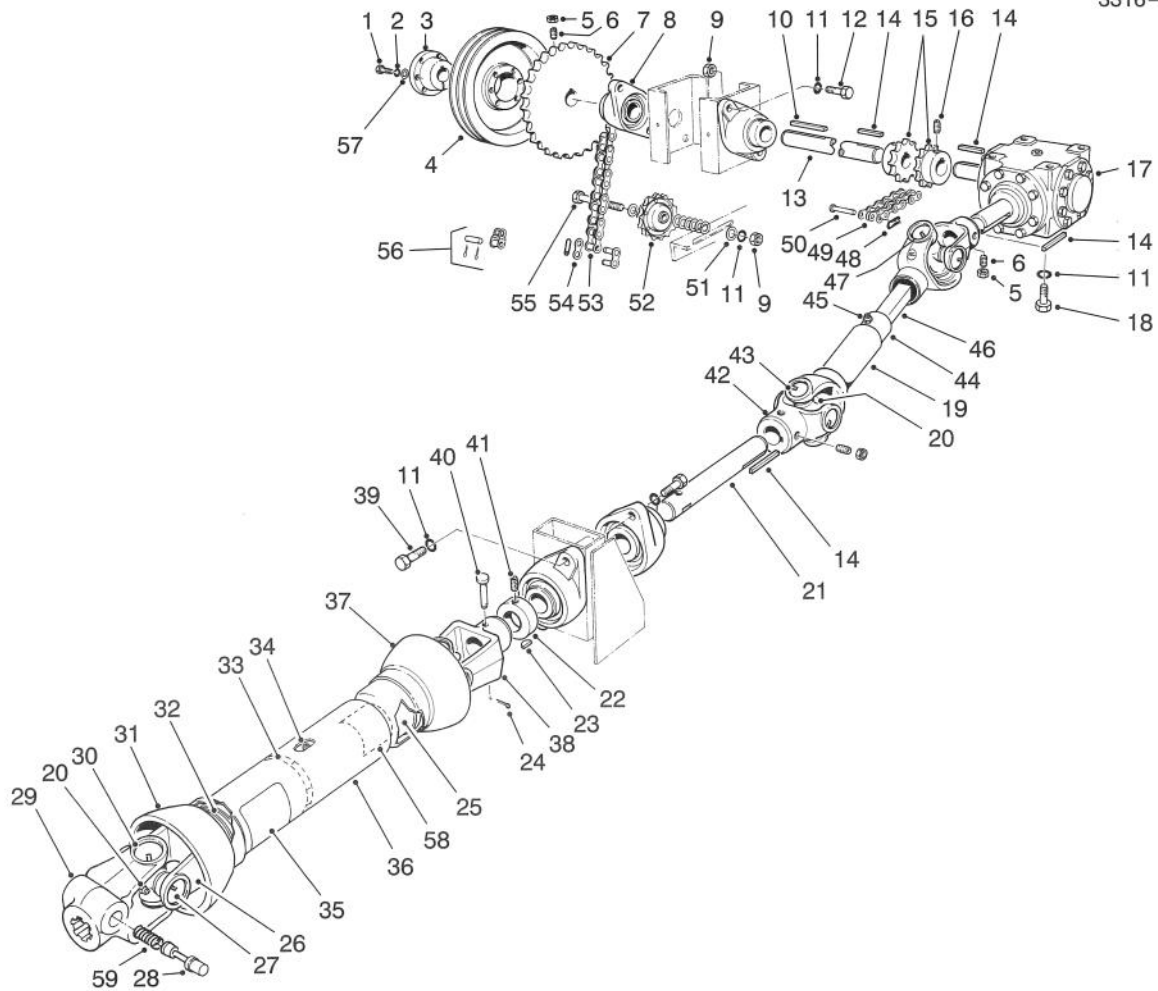


T-0008

## DRIVE SHAFTS & GEAR BOX (Model No. 07052)

Ref. No.	Part No.	Description	No. Used
1	322-7	Screw - Cap Hex. Hd.	3
2	3253-4	Washer - Lock	3
3	13-6050	Bushing (Incl. Ref. #1 & 2)	1
4	13-6020	Sheave	1
5	3218-3	Nut - Jam	6
6	3247-6	Screw - Set	6
7	13-6110	Sprocket	1
8	56-6250	Bearing (Incl. Ref. #22 & 41)	4
9	3217-9	Nut - Hex.	5
10	13-3720	Key - Square	1
11	3253-7	Washer - Lock	13
12	325-6	Screw - Cap Hex. Hd.	4
13	13-5910	Shaft - Drive, Side	1
14	5-0738	Key - Square	4
15	13-6690	Coupling Half	2
16	3247-3	Screw - Set	4
17	70-2350	Gear Box - Complete	1
18	325-4	Screw - Cap Hex. Hd.	4
19	42-1870	Rear Shaft Assembly (Incl. Ref. #20 & 42-47)	1
20	2115-80	Fitting - Grease	4
21	13-5900	Shaft - Drive, Front	1
22	251-246	Collar - Locking, Eccentric (Incl. Ref. #41)	4
23	3257-8	Key - Woodruff	1

Ref. No.	Part No.	Description	No. Used
24	3272-6	Pin - Cotter	1
25	42-2360	Yoke & Tube Assembly (Incl. Ref. #34 & 58)	1
26	42-2370	Yoke and Shaft	1
27	2115-79	Ring - Lock	8
28		Pin - Quick Detach	1
29	42-2310	Yoke - Front (Incl. Ref. #28 & 59)	1
30	2115-88	Bearing & Cross Kit (Incl. Ref. #20 & 27)	2
31	42-2380	Shield - Outer (Incl. Ref. #35)	1
32	92-1580	Bearing Kit, Shield	2
33	42-2340	Centralizer - Guard	1
34	2115-85	Fitting - Grease	1
35	92-1582	Decal - Safety	1
36	42-1860	Front Shaft Assembly (Incl. Ref. #20, 25, 35, 37, 38, 58 & 59)	1
37	42-2350	Shield - Inner	1
38	2115-94	Yoke - Rear	1
39	325-5	Screw - Cap Hex. Hd.	4
40	283-46	Pin - Clevis	1
41		Screw - Set	8
42	2115-81	Yoke	2
43	2115-76	Kit - Center Parts	2
44	42-2290	Yoke and Tube	1

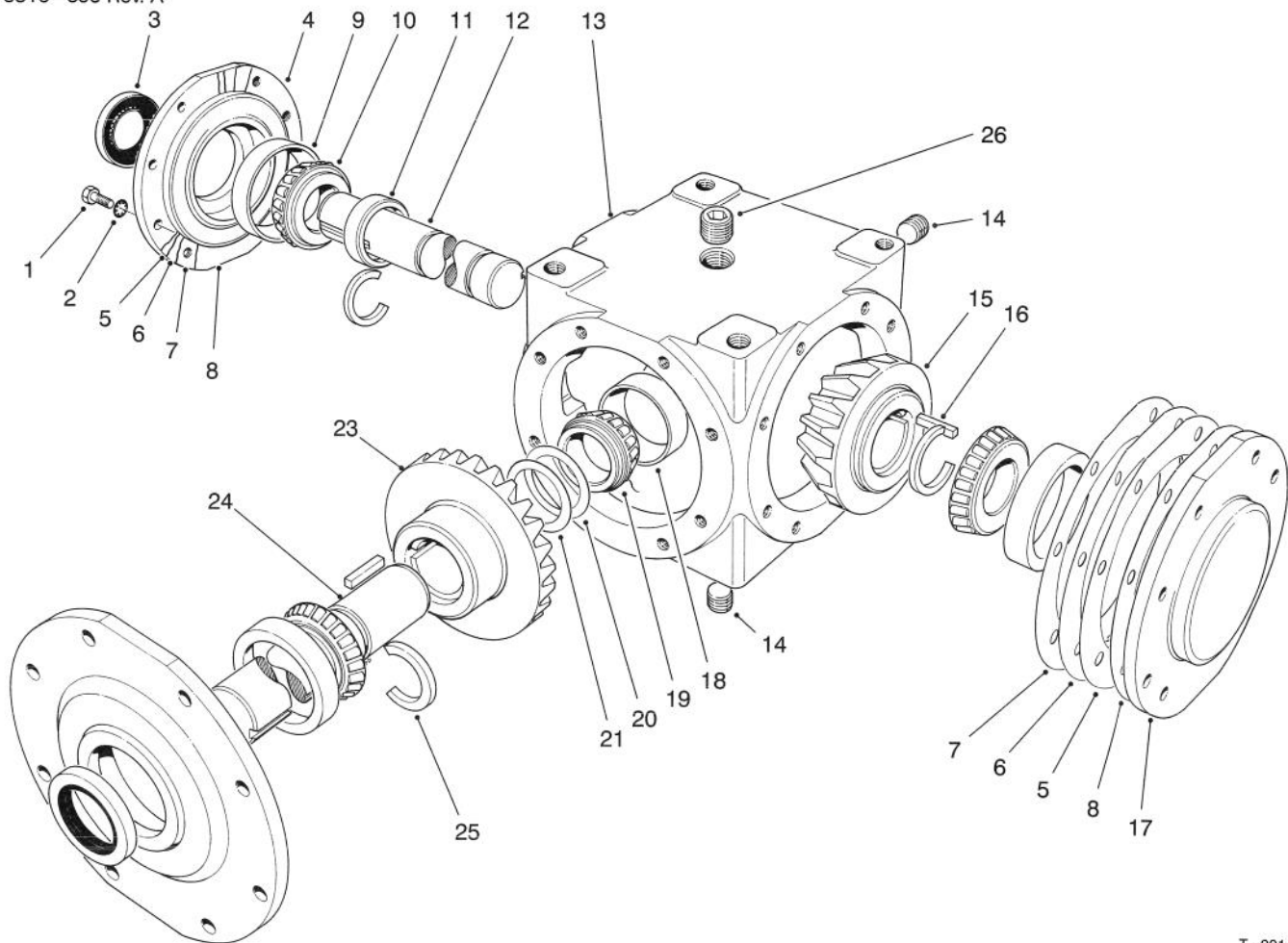


T-0008

## DRIVE SHAFTS & GEAR BOX (Model No. 07052) (Continued)

Ref. No.	Part No.	Description	No. Used	Ref. No.	Part No.	Description	No. Used
45	302-2	Fitting - Grease	1	53	13-4590	Chain	1
46	42-2300	Yoke and Shaft	1	54	2710-30	Link - Connecting	1
47	2115-78	Ring - Lock	8	55	325-12	Screw - Cap Hex. Hd.	1
48		Clip - Pin, Connector	1	56	2710-29	Link - Offset	1
49	13-6680	Chain	1	57	3256-23	Washer - Flat	3
50	13-6670	Pin - Connector (Incl. Ref.#48)	1	58	92-1581	Decal - Safety	1
51	3256-26	Washer - Flat	8	59		Spring	1
52	13-4570	Sprocket - Idler	1	*	92-1187	Quick Disconnect Kit (Incl. Ref. # 28, & 59)	1

\*Not Illustrated

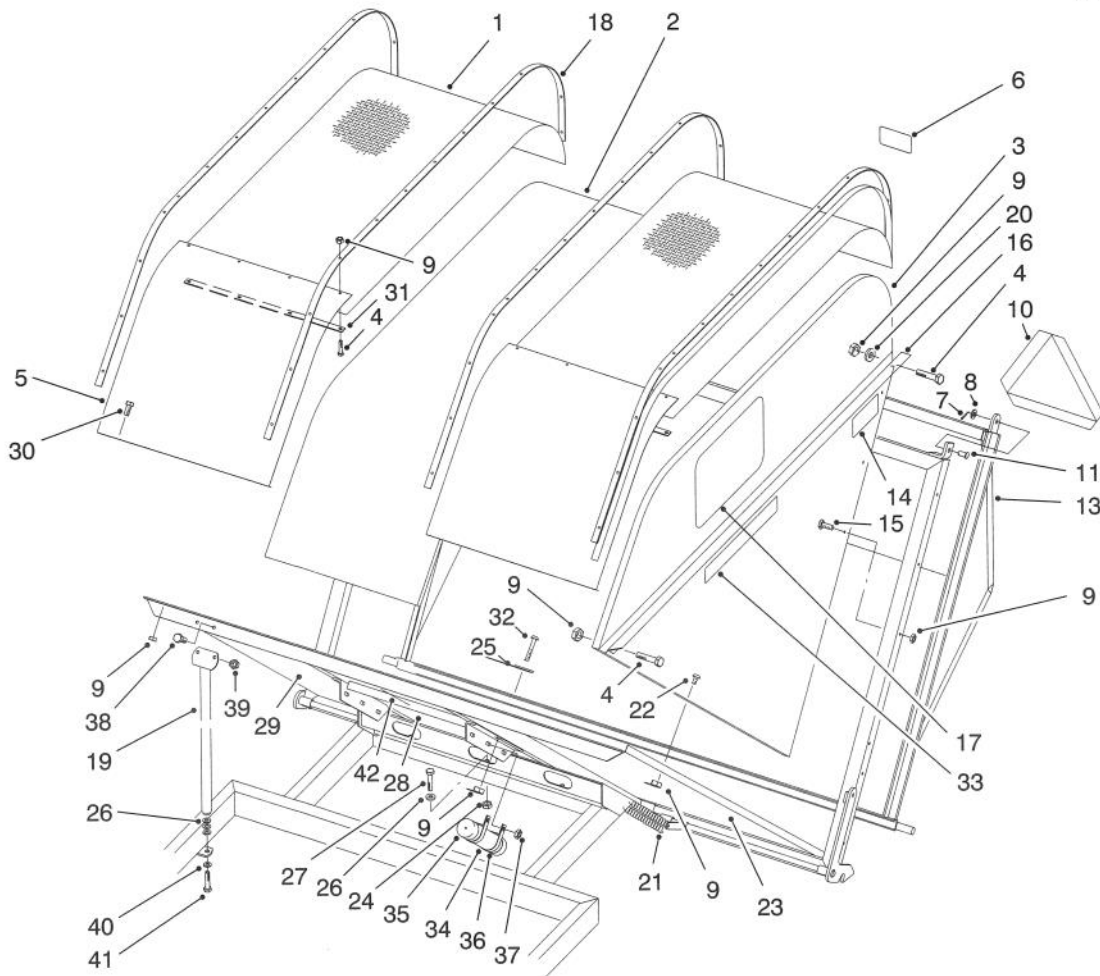


T-0014

## GEAR BOX ASSEMBLY (Model No. 07052)

Ref. No.	Part No.	Description	No. Used
1	322-5	Screw - Cap Hex. Hd.	24
2	3254-2	Washer - Lock	24
3	13-6520	Seal	2
4	70-2420	Cap	2
5	13-6490	Gasket - .002 Thk.	A/R
6	13-6610	Gasket - .003 Thk.	A/R
7	13-6600	Gasket - .005 Thk.	A/R
8	13-6590	Gasket - .015 Thk.	A/R
9	254-57	Cup - Bearing	3
10	254-58	Cone - Bearing	3
11	70-2440	Collar - Thrust	1
12	93-4430	Shaft	1
13	13-6650	Housing	1

Ref. No.	Part No.	Description	No. Used
14	285-12	Plug - Pipe	2
15	70-2450	Gear - 17 Tooth	1
16	70-2380	Key - Tapered	2
17	70-2360	Cap	1
18	254-61	Cup - Bearing	1
19	254-62	Cone - Bearing	1
20	13-6540	Shim - .010 Thk.	A/R
21	13-6630	Shim - .005 Thk.	A/R
23	70-2370	Gear - 23 Tooth	1
24	70-2390	Shaft	1
25	70-2410	Ring - Retaining	3
26	59-1460	Plug - Vent	1

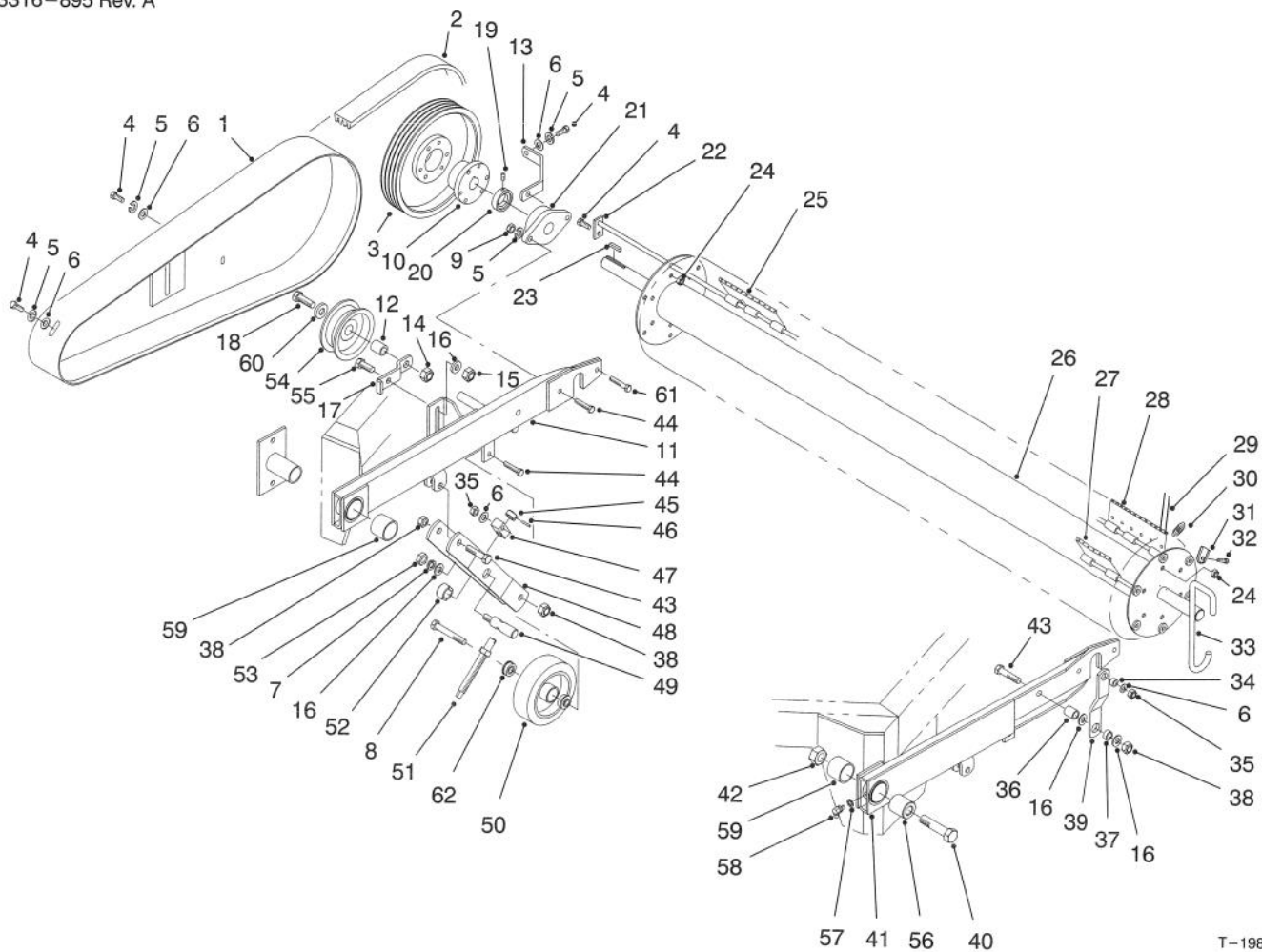


T-0007

## HOPPER & REAR TAILGATE

Ref. No.	Part No.	Description	No. Used	Ref. No.	Part No.	Description	No. Used
1	93-4029	Screen - Top	2	23	13-7360	Panel - Bottom, L.H.	1
2	93-4027	Panel - Top	1	24	3296-23	Nut - Lock	3
3	93-4025	Panel W.A. - L.H.	1	25	13-3710	Washer - Flat	2
*	93-4021	Panel W.A. - R.H.	1	26	3256-26	Washer - Flat	9
4	3234-33	Screw - Hex Flange Hd.	96	27	325-6	Screw - Cap Hex. Hd.	3
5	93-4015	Panel - Front	2	28	13-7370	Panel - Bottom, (Middle)	1
6	13-6760	Decal - Caution	1	29	13-7350	Panel - Bottom, (R.H.)	1
7	3272-12	Pin - Cotter	3	30	3250-32	Screw - Phillips Pan Hd.	9
8	3256-27	Washer - Flat	3	31	93-4030	Strap - Hopper, Front	2
9	32128-32	Nut - Lock	193	32	3258-165	Screw - Rd. Hd.	2
10	13-2930	Decal - Slow Moving Vehicle	1	33	93-0184	Decal - Hopper	2
11	283-39	Pin - Clevis	3	34	65-5871	Tube - Manual	1
13	93-4003	Gate	1	35	65-5890	Cap - Tube	2
14	13-7430	Decal - Warning	1	36	2412-102	R-Clamp	2
15	3229-7	Bolt - Carriage	50	37	32153-2	Nut - Lock	2
16	13-7340	Stiffener - L.H.	1	38	323-6	Screw - Cap Hex Hd.	4
*	13-7330	Stiffener - R.H.	1	39	3296-39	Nut - Lock	4
17	67-7920	Decal - Toro	2	40	3253-7	Washer - Lock	2
18	93-4031	Strap - Hopper, Top	4	41	325-7	Screw - Cap Hex Hd.	2
19	93-4042	Support W.A.	2	42	93-7708	Strip - Sealing	1
20	3256-55	Washer - Flat	28	*	92-2409	Hopper Assembly (Incl. Ref. #1-33)	1
21	12-8810	Spring	2				
22	32122-42	Screw - Machine	36				

\*Not Illustrated



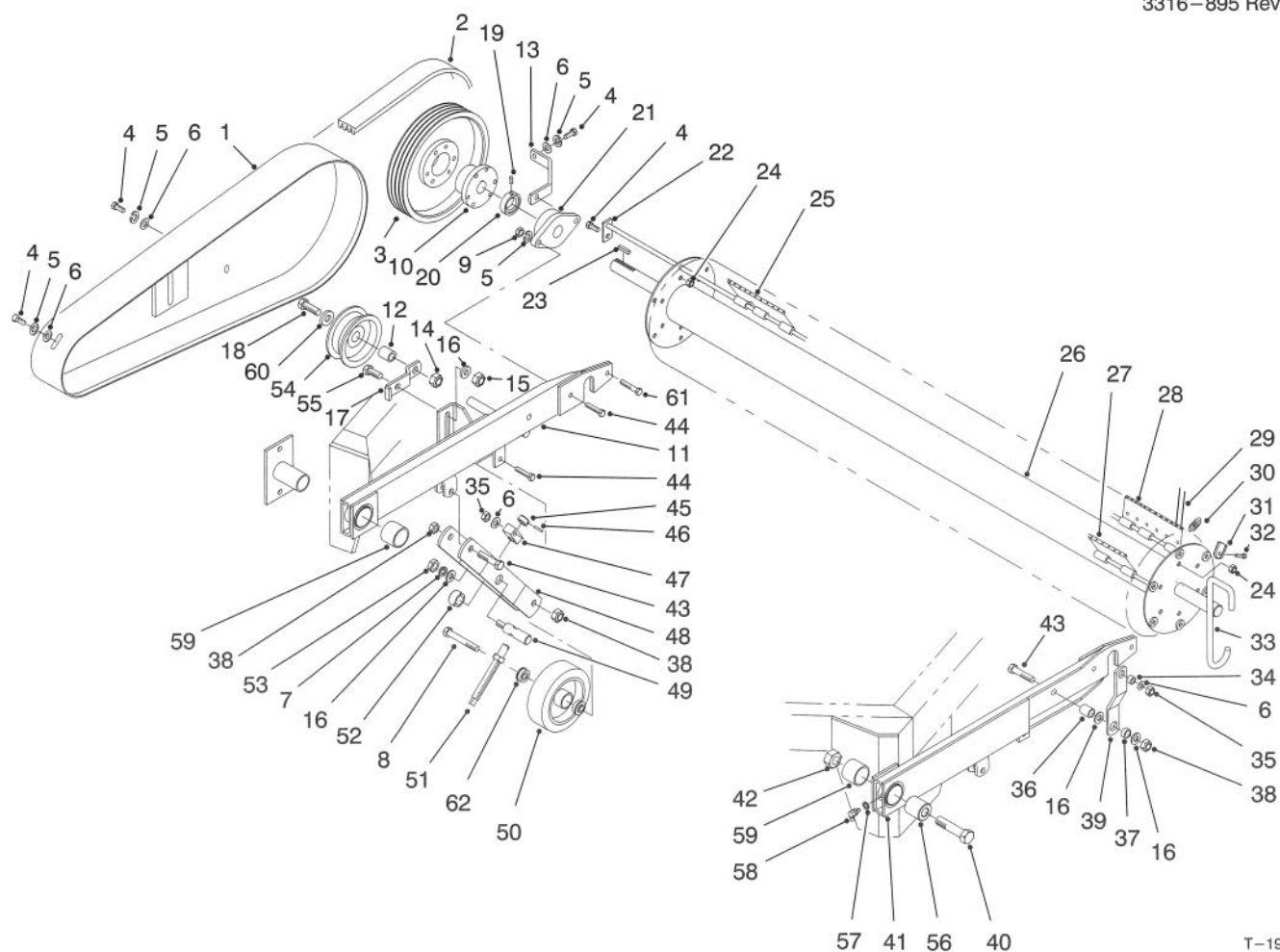
T-1982

## FLEX TIP REEL & TRAILING ARM

Ref. No.	Part No.	Description	No. Used
1	93-4422	Guard - Belt	1
2	93-4034	V-Belt	1
3	93-4001	Pulley - 4 Groove	1
4	323-4	Screw - Cap Hex. Hd.	9
5	3253-21	Washer - Lock	7
6	3256-24	Washer - Flat	7
7	3253-7	Washer - Lock	2
8	325-14	Screw - Cap Hex. Hd.	2
9	3217-7	Nut - Hex.	4
10	13-2680	Bushing	1
11	93-4445	Trailing Arm - R.H. (Incl. Ref. #59)	1
12	93-4428	Spacer - Pulley	1
13	93-4434	Support Bracket W.A.	1
14	3296-53	Nut - Lock	1
15	3296-23	Nut - Lock	1
16	3256-26	Washer - Flat	7
17	93-4433	Pulley Bracket W.A.	1
18	327-6	Screw - Cap Hex. Hd.	1
19		Screw - Set	2
20		Collar - Locking	2
21	56-6230	Bearing (Incl. Ref. #19 & 20)	2
22	13-4960	Shaft W.A. - Plate, Finger	6
23	13-2840	Key - Square	1
24	32152-2	Nut - Lock	12

Ref. No.	Part No.	Description	No. Used
25	93-0189	Assy. - End Plate, Stake	3
26	93-0197	Flex Tip W.A. - Reel	1
27	93-0185	Assy. - Center Plate, Stake	60
28	93-0187	Assy. - End Plate, Stake	3
29	13-6700	Finger - Nylon	276
30	13-3090	Spring	66
31	13-2480	Clamp - Finger	276
32	32140-94	Screw - Cap Hex. Hd.	276
33	93-7711	Hook - Transport	2
34	13-0560	Spacer	2
35	32153-2	Nut	4
36	13-0360	Spacer	2
37	13-3070	Spacer	2
38	32153-5	Nut	6
39	13-5540	Link - Lift	2
40	328-10	Bolt - Hex. Hd.	1
41	63-5300	Trailing Arm - L.H. (Incl. Ref. #59)	1
42	32153-6	Nut	1
43	325-9	Screw - Cap Hex. Hd.	4
44	323-9	Screw - Cap Hex. Hd.	5
45	13-0320	Collar - Lock	2
46	32121-45	Pin - Roll	2
47	13-0330	Block - Pivot	2
48	13-5550	Arm - Gauge Wheel	2
49	13-5570	Bar - Pivot	2

\*Not Illustrated

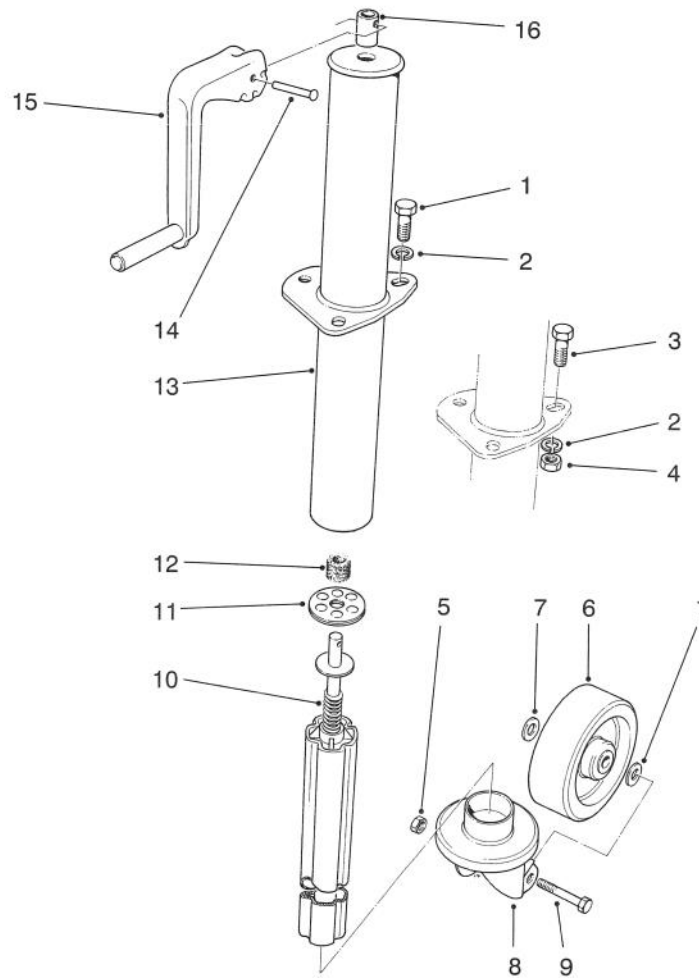


T-1982

## FLEX TIP REEL & TRAILING ARM (Continued)

Ref. No.	Part No.	Description	No. Used	Ref. No.	Part No.	Description	No. Used
50	13-2870	Wheel - Gauge (Incl. Ref. #62)	2	56	63-5250	Spacer	1
51	13-5590	Rod W.A. - Adjustment	2	57	3254-8	Washer - Lock, Int. Tooth	2
52	13-5670	Spacer - Locking	2	58	302-5	Fitting - Grease	2
53	3217-9	Nut - Hex.	2	59	256-298	Bushing	2
54	93-4415	Pulley - Idler	1	60	93-4429	Washer - Pulley	1
55	325-5	Screw - Cap Hex. Hd.	1	61	323-10	Screw - Cap Hex. Hd.	1
				62	93-7715	Ball Bearing	4

\*Not Illustrated



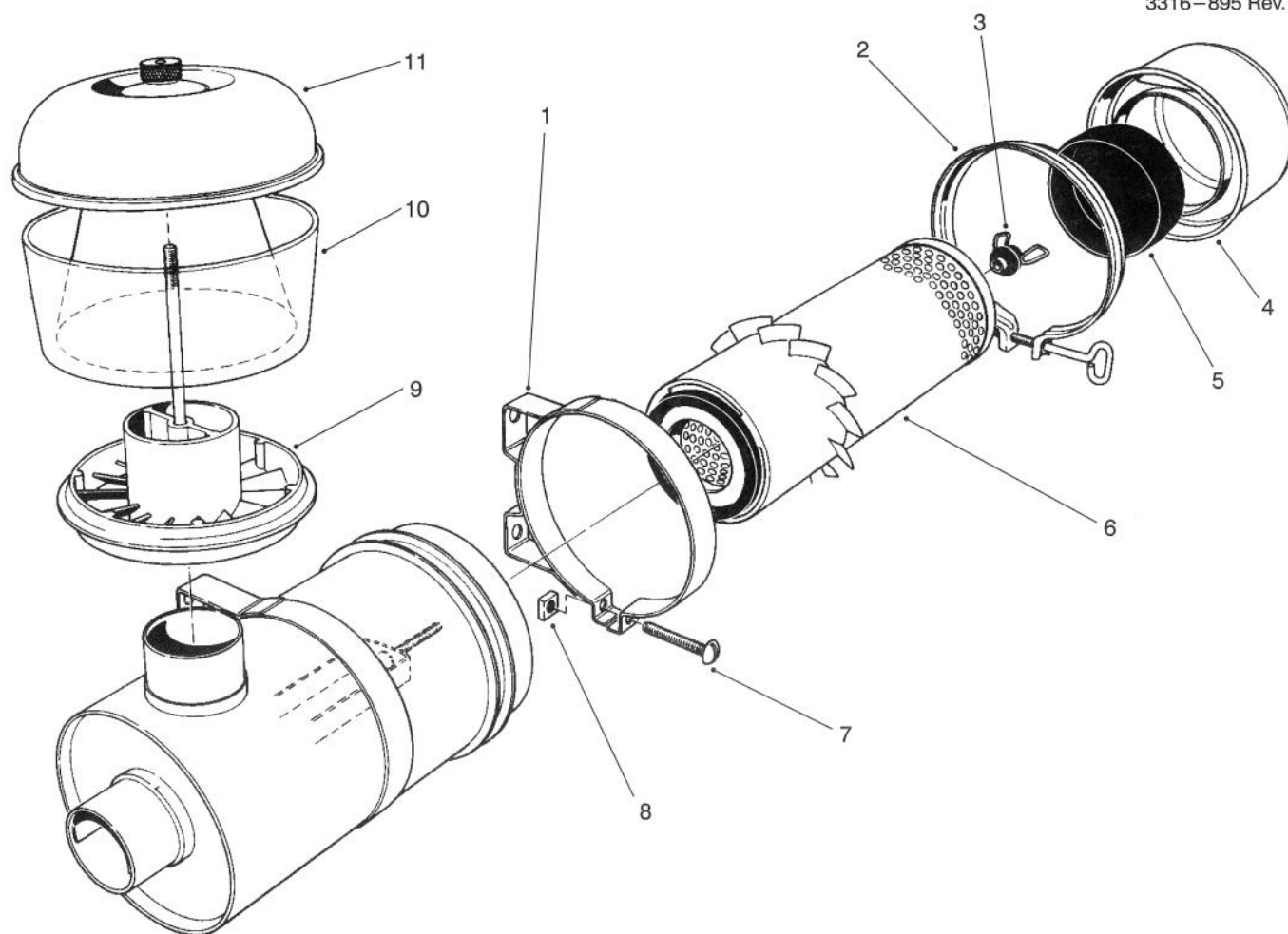
T-0015

## JACK ASSEMBLY

Ref. No.	Part No.	Description	No. Used
1	323-4	Screw - Cap Hex. Hd. (Model 07050 only)	3
2	3253-21	Washer - Lock	3
3	323-5	Screw - Cap Hex. Hd. (Model 07052 only)	3
4	3217-7	Nut - hex. (Model 07052 only)	3
5	3296-23	Nut - Lock	1
6	13-6460	Wheel	1
7	3256-26	Washer - Flat	2
8	13-6450	Bracket - Wheel, Caster	1

Ref. No.	Part No.	Description	No. Used
9	325-13	Screw - Cap Hex. Hd.	1
10	13-6750	Ram	1
11	13-3510	Bearing - Thrust	1
12	13-3610	Sleeve - Felt	1
13	13-5680	Assembly - Jack (Incl. Ref. #10-16)	1
14	13-6730	Rivet	1
15	13-6740	Handle	1
16	13-3490	Sleeve	1
*	13-6440	Assembly - Wheel (Incl. Ref. #5-9)	1

\*Not Illustrated

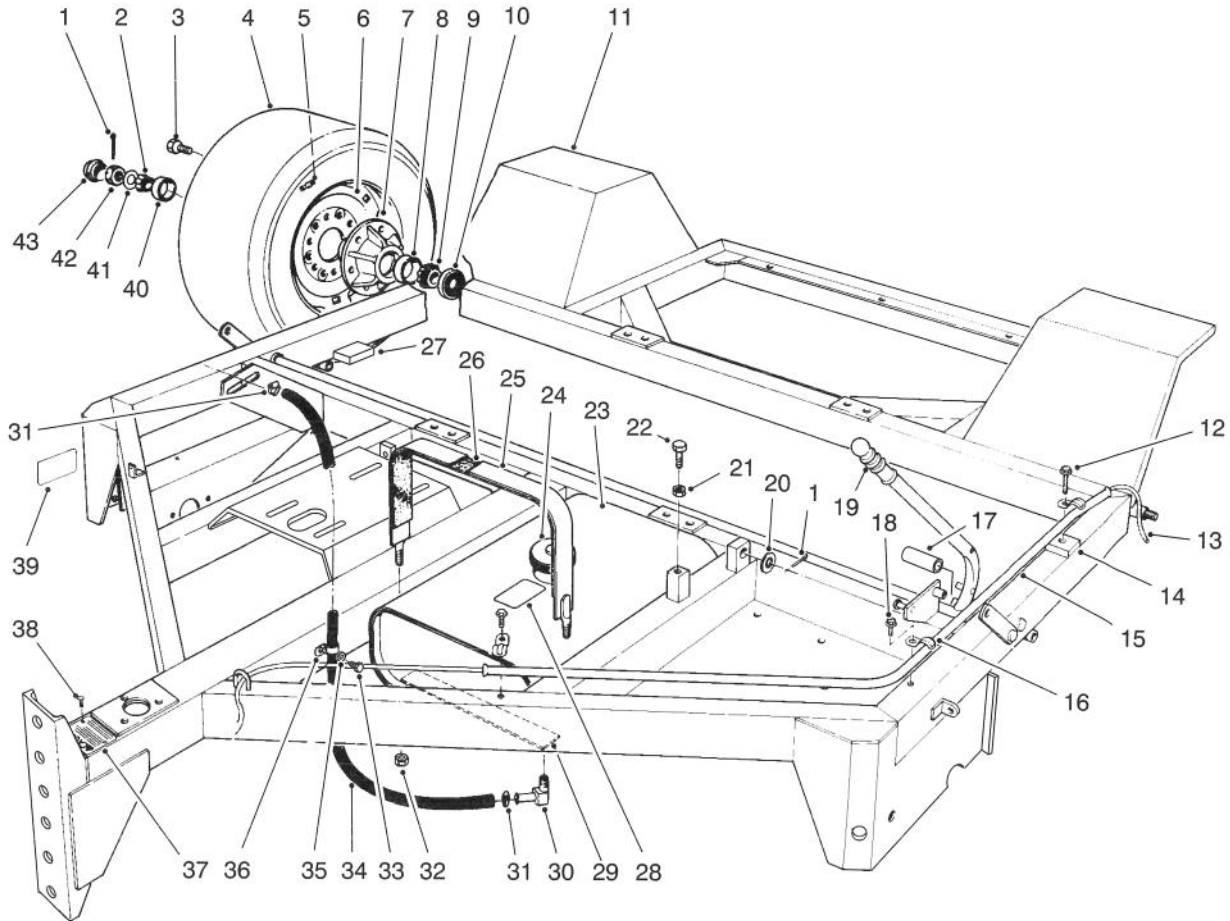


## AIR CLEANER ASSEMBLY NO. 8-2329

Ref. No.	Part No.	Description	No. Used
1	33-1350	Assembly - Band, Mounting	2
2	33-1340	Assembly - Clamp	1
3	33-1330	Assembly - Nut	1
4	33-1320	Assembly - Cup	1
5	33-1310	Baffle	1
6	33-1300	Assembly - Element	1
7	3258-19	Screw - Machine	2

Ref. No.	Part No.	Description	No. Used
8	32107-11	Nut - Square	2
9	33-1280	Assembly - Sleeve	1
10	33-1270	Bowl - Clear	1
11	33-1260	Assembly - Cover	1
*	27-7220	Detergent - Cleaning, Air Filter Element (4 lb. box)	A/R

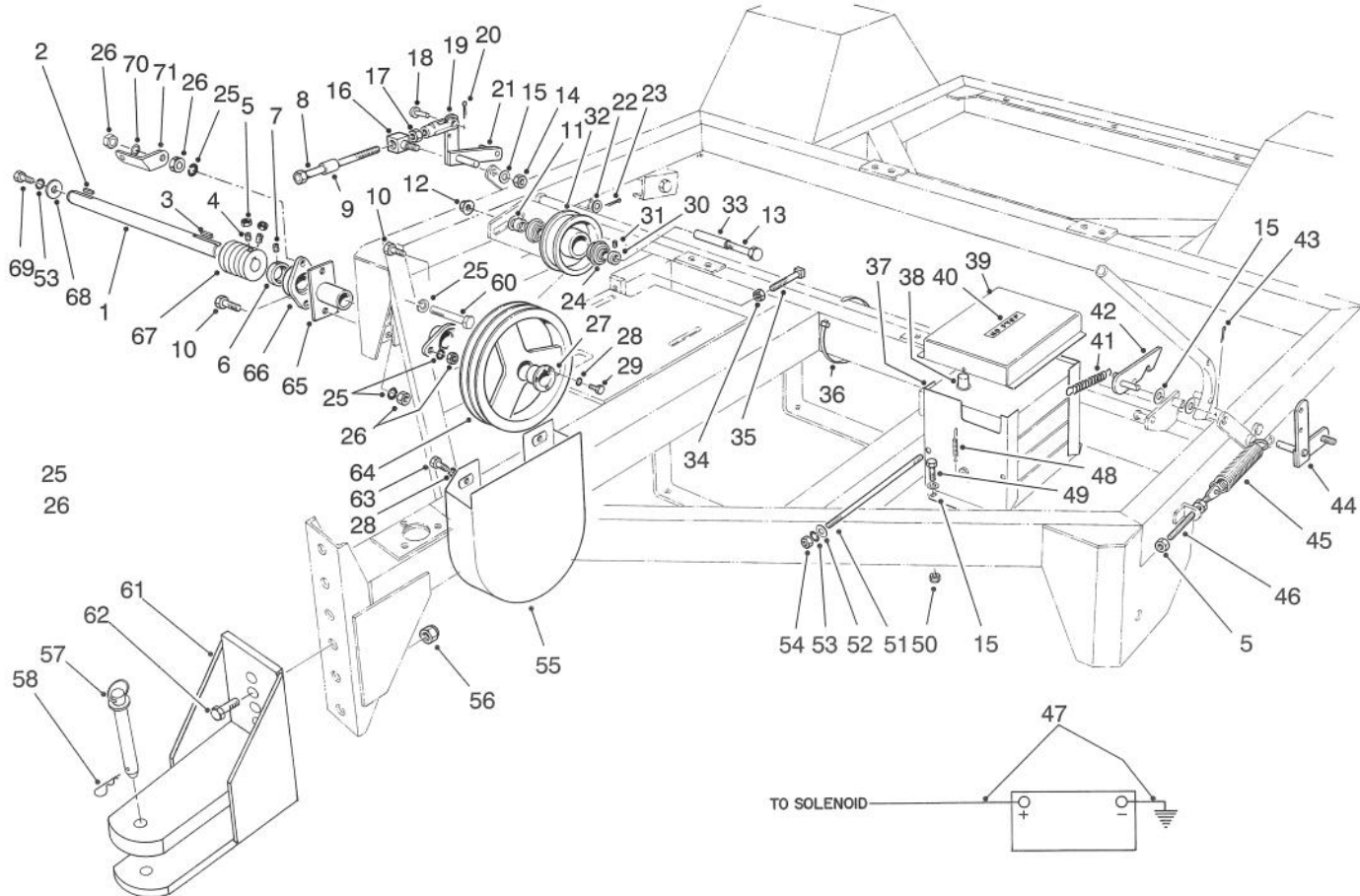
\*Not Illustrated



T-0006

## FRAME ASSEMBLY (Model No. 07050)

Ref. No.	Part No.	Description	No. Used	Ref. No.	Part No.	Description	No. Used
1	3272-17	Pin - Cotter	3	23	13-3930	Tank - Gas	1
2	254-62	Cone - Bearing	2	24	222-8	Cap - Gas	1
3	217-103	Bolt - Wheel	12	25	13-3960	Strap Assy. (Incl. Ref. #26)	2
4	93-0181	Tire	2	26	13-3970	Felt Strip	2
5	232-27	Stem - Valve	2	27	93-7709	Pad	1
6	93-0182	Wheel Assembly	2	28	53-4420	Decal - Gas	1
7	242-54	Hub (Incl. Ref. #8 & 40)	2	29	13-3970	Strip - Felt	2
8	254-66	Cup - Bearing	2	30	304-75	Fitting - Tube	1
9	254-65	Cone - Bearing	2	31	2412-108	Clamp - Hose	2
10	253-127	Seal	2	32	32153-3	Nut - Lock	4
11	93-4009	Main Frame	1	33	32104-109	Screw	1
12	32104-96	Screw - Self Tapping	1	34	63-7722	Hose - Fuel Line	1
13	20-9580	Rope	1	35	3256-22	Washer - Flat	1
14	13-6910	Spacer - Guide, Rope	1	36	2412-93	Clamp	1
15	13-6890	Guide - Rope	1	37	13-7460	Plate - Caution, Hitch	1
16	2412-40	Clamp - Conduit	3	38	3290-55	Rivet - Pop	4
17	3-3107	Hose	1	39	67-5360	Decal	1
18	32104-95	Screw - Self Tapping	2	40	254-61	Cup - Bearing	2
19	235-15	Grip - Handle	1	41	3256-29	Washer - Flat	2
20	3256-28	Washer - Flat	1	42	32136-1	Nut - Slotted	2
21	3218-3	Nut - Jam	1	43	242-55	Cap - Hub	2
22	323-8	Screw - Cap Hex. Hd.	1				

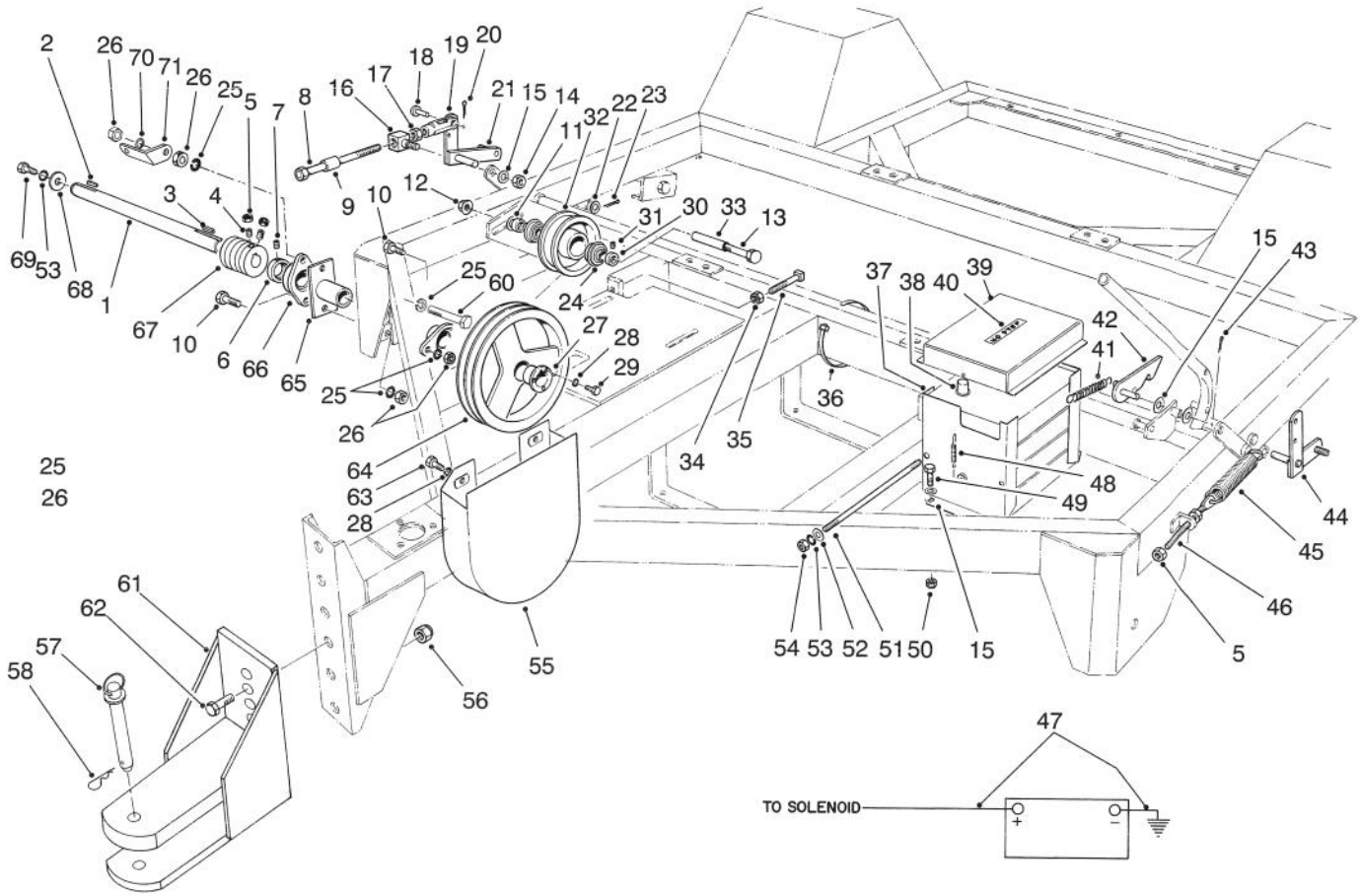


T-0010

## JACKSHAFT & LIFTING MECHANISM (Model No. 07050)

Ref. No.	Part No.	Description	No. Used
1	93-4032	Shaft - Jack	1
2	68-3220	Key - Square	1
3	13-6330	Key - Square	1
4	3243-6	Screw - Set	2
5	3218-3	Nut - Jam	6
6		Collar - Locking	2
7		Screw - Set	2
8	13-6260	Screw - Adjustment	2
9	13-5520	Spacer	2
10	324-7	Screw - Cap Hex. Hd.	3
11	3256-26	Washer - Flat	1
12	32128-49	Nut - Flange, Lock	1
13	325-20	Screw - Cap Hex. Hd.	1
14	32153-2	Nut - Lock	2
15	3256-24	Washer - Flat	7
16	13-0100	Block - Pivot	2
17	3219-3	Nut - Hex	2
18	283-2	Pin - Clevis	2
19	282-22	Clevis	2
20	3272-10	Pin - Cotter	2
21	93-4440	Bell Crank - Lift, R.H.	1
22	3256-28	Washer - Flat	2
23	3272-22	Pin - Cotter	2
24	56-6210	Bearing (Incl. Ref. #30 & 31)	2
25	3253-6	Washer - Lock	5

Ref. No.	Part No.	Description	No. Used
26	3217-8	Nut - Lock	5
27	13-2680	Bushing (Incl. Ref. #28 & 29)	1
28	3253-4	Washer - Lock	5
29	322-7	Screw - Cap Hex. Hd.	3
30		Collar - Locking	2
31		Screw - Set	2
32	13-0600	Pulley - Idler (Incl. Ref. #24)	1
33	93-7706	Tube - Spacer	1
34	3218-5	Nut - Hex.	2
35	3244-21	Screw - Set	2
36	250-5	Strap - Locking	2
37	3-5967	Support - Battery	2
38	55-7290	Battery	1
39	3-3175	Cover - Battery	1
40	61-5950	Decal	1
41	13-0480	Spring	1
42	13-3990	Handle - Trip	1
43	3272-10	Pin - Cotter	1
44	13-5500	Bell Crank - Lift, L.H.	1
45	13-0050	Spring	2
46	13-5530	Rod - Adjustment, Spring	2
47	13-6790	Cable - Battery	2
48	3-8135	Spring	2
49	323-5	Screw - Cap Hex. Hd.	4

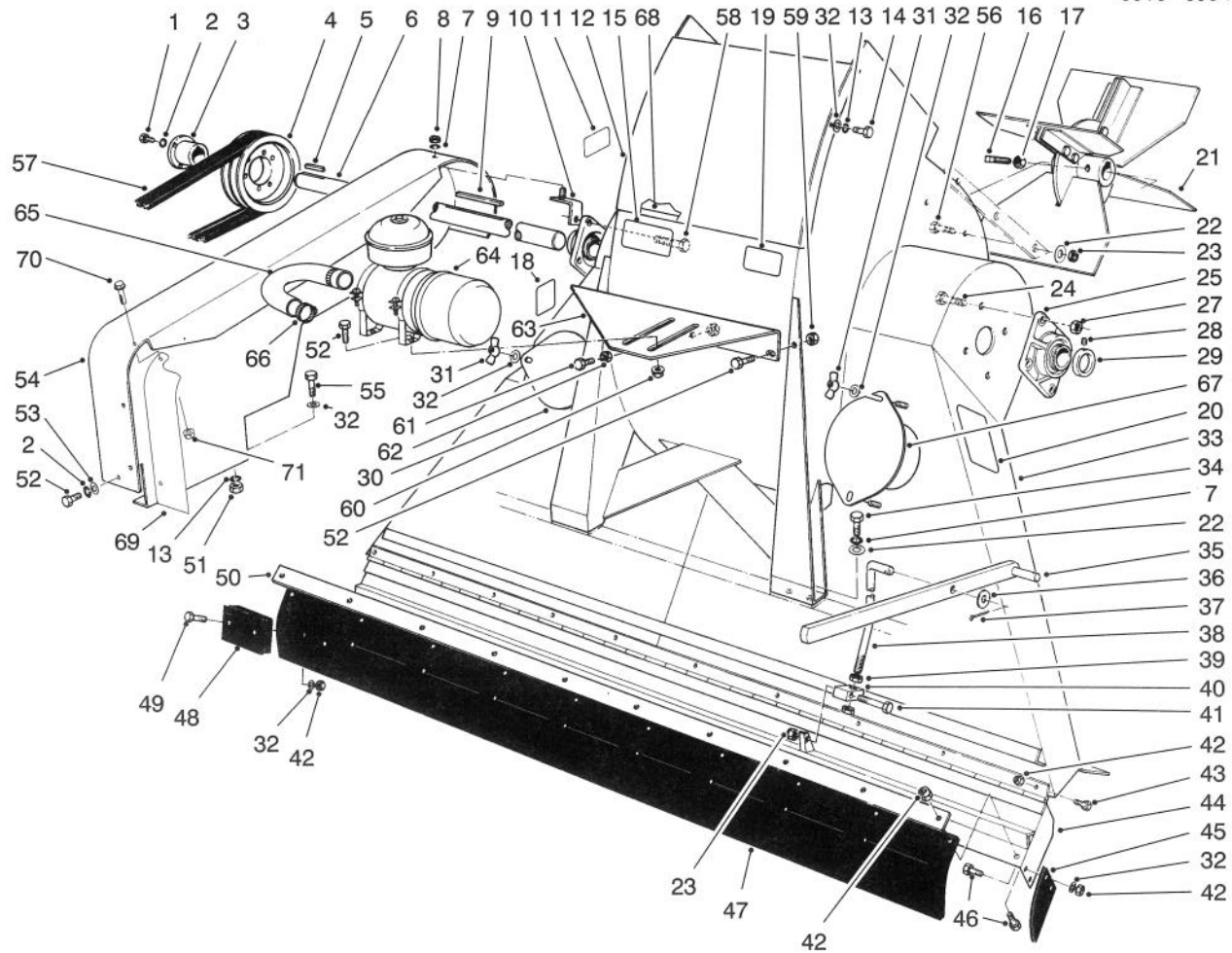


T-0010

## JACKSHAFT & LIFTING MECHANISM (Model No. 07050) (Continued)

Ref. No.	Part No.	Description	No. Used
50	3296-39	Nut - Lock	4
51	5-0678	Rod - Clamp, Battery	2
52	3256-22	Washer - Flat	4
53	3253-3	Washer - Lock	5
54	3217-5	Nut - Hex.	4
55	13-4490	Guard - Sheave	1
56	3296-53	Nut - Lock	2
57	13-6200	Pin - Hitch (Incl. Ref. #58)	1
58	3290-343	Pin - Hair Cotter	1
60	324-10	Screw - Cap Hex. Hd.	1
61	93-4409	Tongue W.A.	1

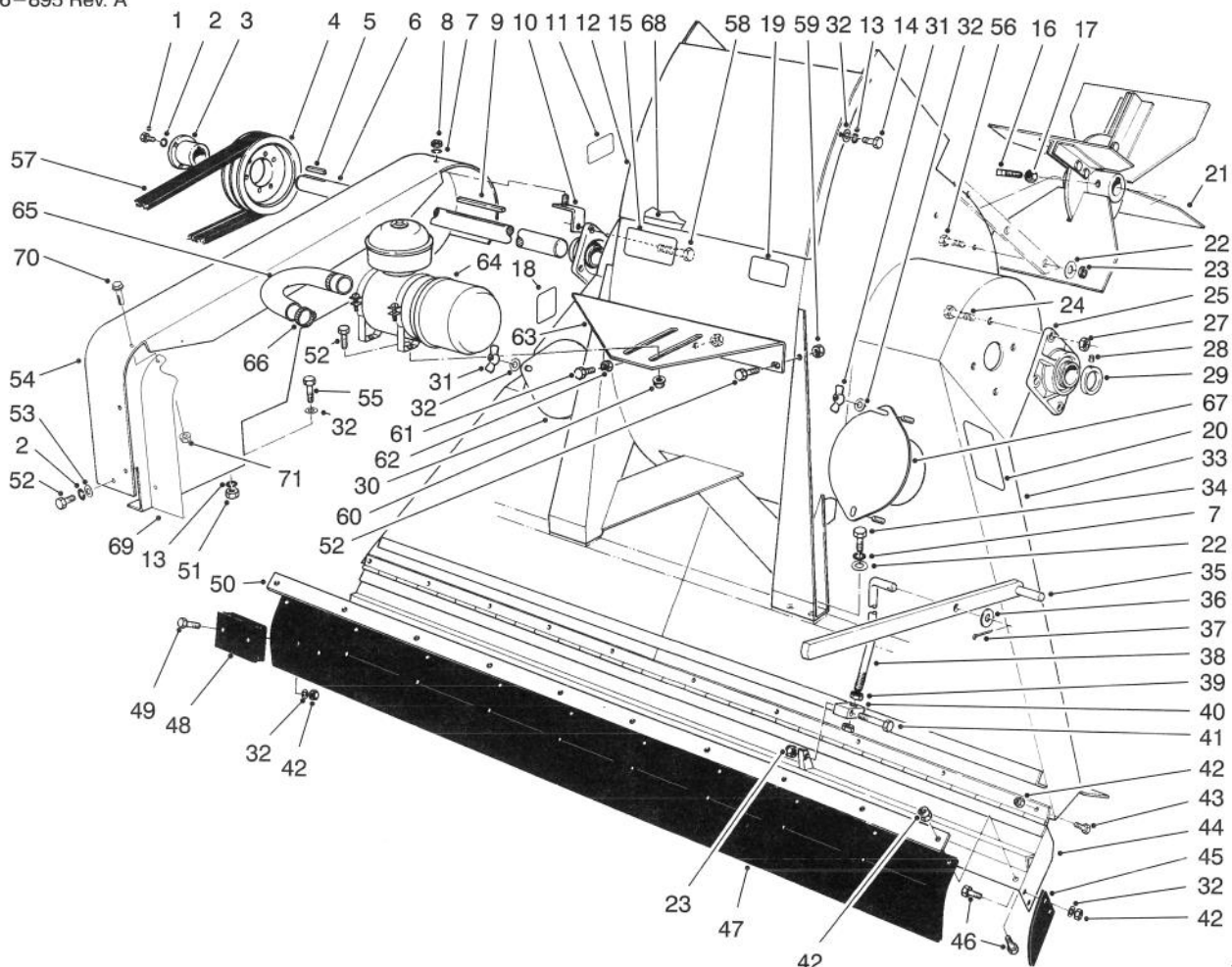
Ref. No.	Part No.	Description	No. Used
62	327-6	Screw - Cap Hex. Hd.	2
63	322-7	Screw - Cap Hex. Hd.	2
64	13-2670	Sheave	1
65	63-5210	Spindle - Driveside	1
66	56-6230	Bearing (Incl. Ref. #6 & 7)	2
67	93-4033	Pulley - Driver	1
68	13-3710	Washer	1
69	321-4	Screw - Cap Hex. Hd.	1
70	3290-211	Washer - Spring	1
71	93-4438	Bracket - Belt Guard	1



T-0005

## BLOWER & THROAT ASSEMBLY (Model No. 07050)

Ref. No.	Part No.	Description	No. Used	Ref. No.	Part No.	Description	No. Used
1	322-7	Screw - Cap Hex. Hd.	3	27	32153-5	Nut - Lock	8
2	3253-4	Washer - Lock	4	28		Screw - Set	2
3	13-2970	Bushing (Incl. Ref. #1 & 2)	1	29		Collar - Locking	2
4	13-2800	Pulley	1	30	13-1420	Cover - Inspection	1
5	13-2240	Key - Square	1	31	32103-12	Nut - Wing	4
6	13-3790	Shaft - Fan	1	32	3256-22	Washer - Flat	32
7	3253-21	Washer - Lock	9	33	13-6280	Blower (Incl. Ref. #11-15, 18-20, 30-32, & 67-68)	1
8	3217-7	Nut - Hex.	1	34	323-6	Screw - Cap Hex. Hd.	8
9	13-2810	Key - Square	1	35	13-6390	Handle - Flap	1
10	13-3350	Mounting Bracket W.A.	1	36	3256-27	Washer - Flat	1
11	67-5360	Decal	1	37	3272-12	Pin - Cotter	1
12	13-3850	Plate - Blower Access	1	38	13-6360	Rod - Lift	1
13	3253-3	Washer - Lock	6	39	3218-6	Nut - Jam	2
14	321-4	Screw - Cap Hex. Hd.	4	40	13-0330	Block - Pivot	1
15	13-6410	Decal	1	41	323-9	Screw - Cap Hex. Hd.	1
16	3244-14	Screw - Set, - Sq. Hd.	4	42	3296-42	Nut - Lock	42
17	3218-5	Nut - Jam	4	43	321-3	Screw - Cap Hex. Hd.	10
18	92-8309	Decal - Warning	1	44	13-4760	Flap - Lower	1
19	93-7307	Decal - Warning	1	45	13-3130	Flap - End	2
20	93-4041	Decal - Op. Instructions	1	46	321-5	Screw - Cap Hex. Hd.	14
21	13-3420	Fan Assembly	1	47	13-4700	Flap (Incl. Ref. #23, 42, 48-49)	1
22	3256-24	Washer - Flat	14	48	13-4560	Weight - Flap	18
23	3296-39	Nut - Lock	7	49	321-8	Screw - Cap Hex. Hd.	18
24	325-6	Screw - Cap Hex. Hd.	7	50	13-1390	Retainer - Flap	1
25	56-6220	Bearing (Incl. Ref. #28 & 29)	2	51	3217-5	Nut - Hex	2

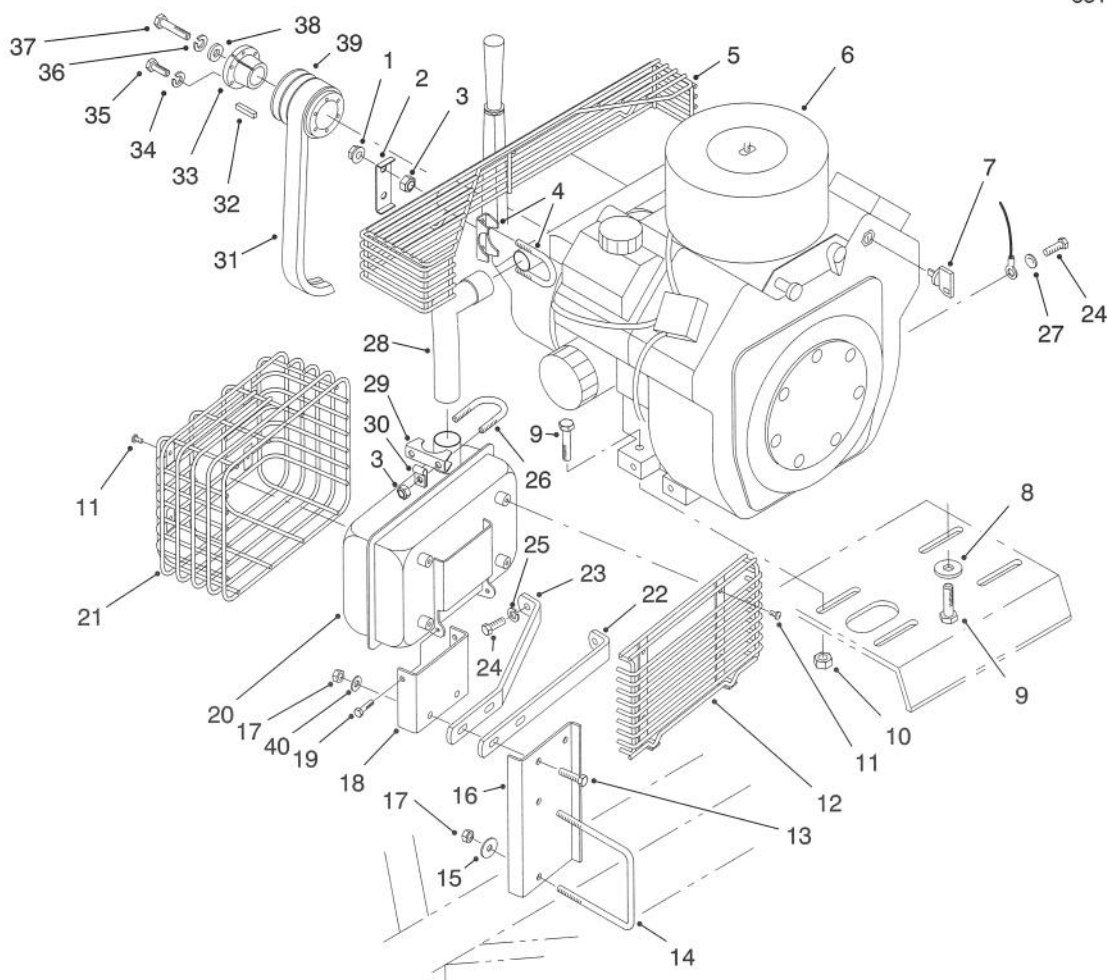


T-0005

## BLOWER & THROAT ASSEMBLY (Model No. 07050) (Continued)

Ref. No.	Part No.	Description	No. Used
52	322-1	Screw - Cap Hex. Hd.	1
53	3256-23	Washer - Flat	1
54	13-4800	Guard - Belt	1
55	321-4	Screw - Cap Hex. Hd.	2
56	323-7	Screw - Cap Hex. Hd.	6
57	93-0183	Belt	1
58	325-7	Screw - Cap Hex. Hd.	1
59	32153-3	Nut - Lock	2
60	32128-25	Nut - Lock, Flange	4
61	322-5	Screw - Cap Hex. Hd.	1

Ref. No.	Part No.	Description	No. Used
62	3218-2	Nut - Jam	2
63	67-9730	Bracket - Air Cleaner	1
64	8-2329	Air Cleaner Assembly	1
65	93-7701	Hose - Air Cleaner	1
66	2412-42	Clamp	2
67	93-4020	Cover - Inspection	1
68	93-7708	Strip - Sealing	1
69	93-7707	Shield - Belt Guard	1
70	3234-33	Screw - Cap Hex. Hd.	2
71	32128-32	Nut - Lock, Flange	2



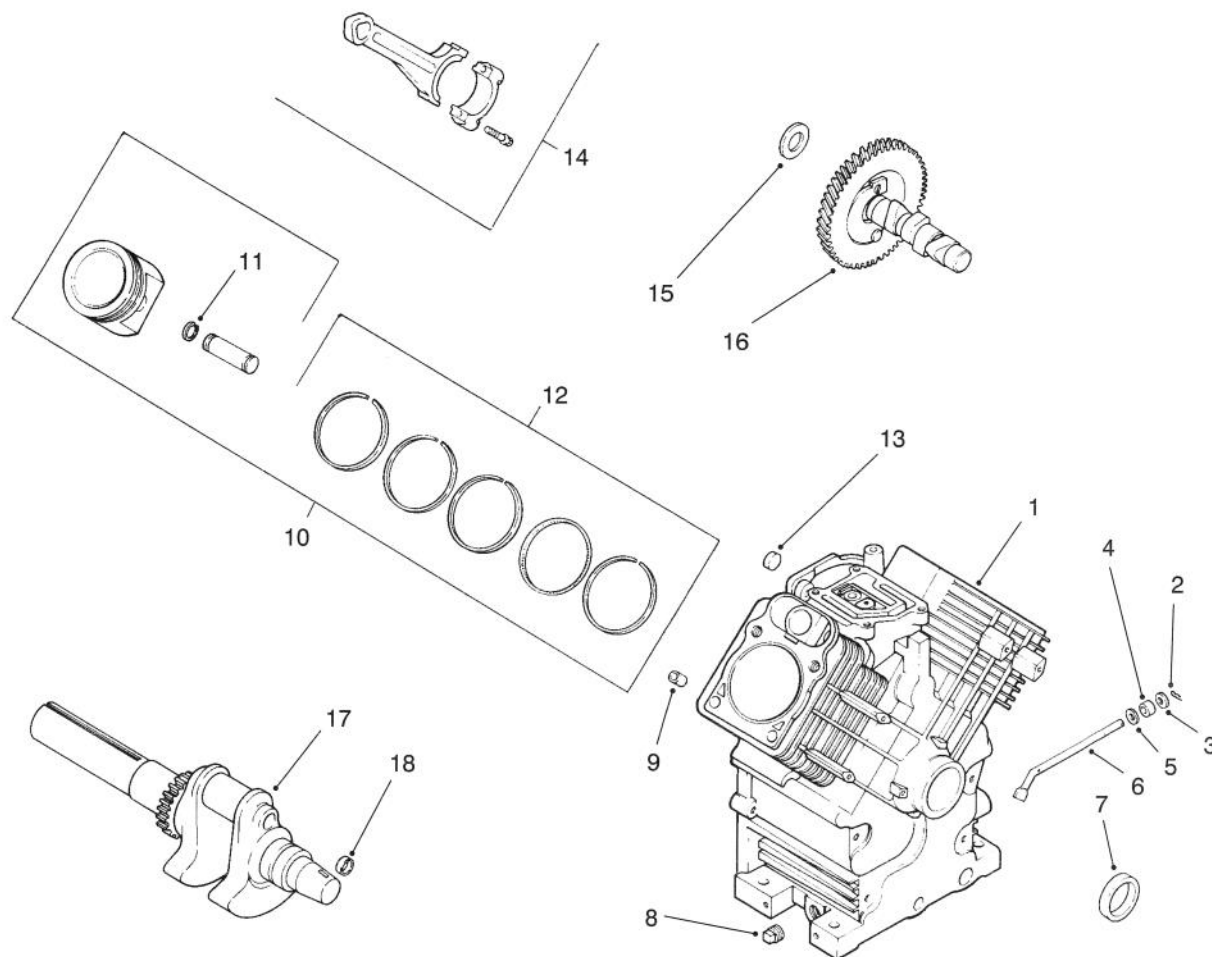
T-2006

## ENGINE ASSEMBLY

Ref. No.	Part No.	Description	No. Used	Ref. No.	Part No.	Description	No. Used
1	32128-20	Nut - Lock, Flange	4	22	93-4000	Strap - Muffler Support	1
2	93-7703	Plate - Clamp Guard	2	23	93-0199	Strap - Muffler Support	1
3	32153-3	Nut - Lock	4	24	48-7700	Screw - Cap Hex. Hd.	3
4	94-1756	Muffler Clamp Assembly	2	25	3253-4	Washer - Lock	2
5	93-4418	Guard - Manifold, Exhaust Engine	1	26	2112-11	Clamp - Muffler (Incl. Ref. #29)	1
‡6		Kohler CH22CS Spec 66525	1	27	3254-2	Washer - Lock ITLW	1
7	63-8360	Key	2	‡28	24 382 04	Pipe - Exhaust	1
8	3256-35	Washer - Flat	1	29		Clamp - Muffler	1
9	323-9	Screw - Cap Hex. Hd.	4	30	2412-103	R-Clamp	1
10	32128-29	Nut - Lock, Flange	4	31	13-2650	V-Belt	1
11	47-2830	Screw - Machine	8	32	3-9155	Key - Square	1
12	93-4419	Guard - Muffler, Rear	1	33	13-3330	Bushing (Incl. Ref. #37 & 38)	1
13	322-6	Screw - Cap Hex. Hd.	2	34	3253-3	Washer - Lock	3
14	93-4417	U-Bolt	1	35	321-6	Screw - Cap Hex. Hd.	3
15	3256-82	Washer - Flat	2	36	3253-21	Washer - Lock	1
16	93-4416	Bracket - Support, Muffler	1	37	323-10	Screw - Cap Hex. Hd.	1
17	3296-47	Nut - Lock	4	38	4-1920	Washer	1
18	93-0198	Bracket - Support, Muffler	1	39	13-3320	Pulley	1
19	46-6810	Screw	2	40	3256-23	Washer - Flat	2
‡20	24 068 14	Muffler	1	*‡	12 189 02	Spark Arrestor (Optional)	1
‡21	24 314 03	Guard - Muffler	1				

\*Not Illustrated

‡Obtain these items directly from Kohler Co., Kohler, WI 53044 1-800-544-2444



T-1984

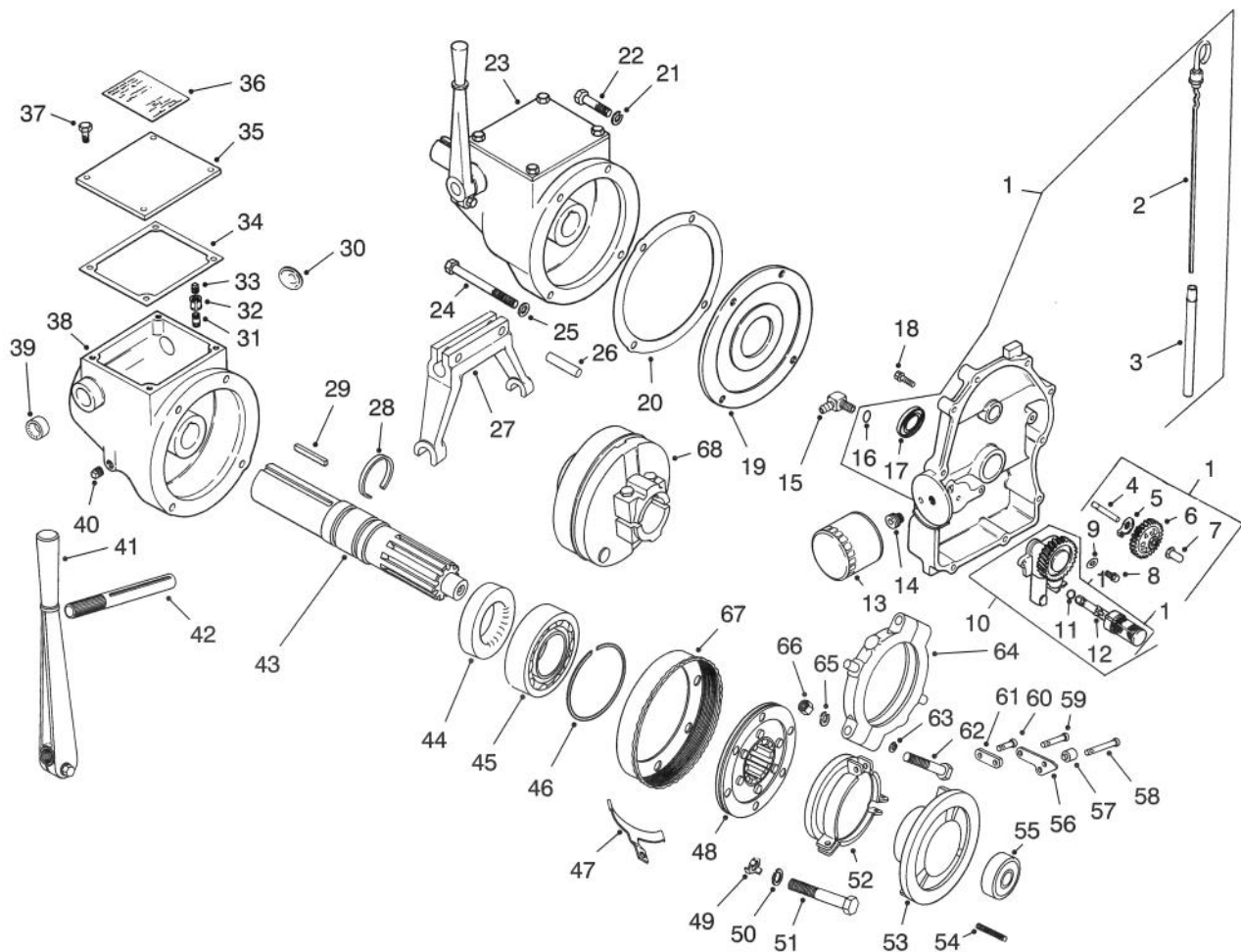
## CRANKSHAFT & CRANKCASE

Ref. No.	Part No.	Description	No. Used
1	24 782 01	Cylinder Block	1
2	12 380 04	Pin, hitch	1
3	X-25-102	Washer, plain	1
4	12 032 01	Seal, governor cross shaft	1
5	X-25-63	Washer, plain	1
6	24 144 01	Shaft, governor cross	1
7	24 032 01	Seal, oil front	1
8	X-75-10	Plug, sq. hd. solid	2
9	12 380 03	Pin, dowel locating	6
10	24 874 01	Piston w/Ring Set (Std.) (Incl. Ref. #11-12)	2
*	24 874 02	Piston w/Ring Set (.25)	2
*	24 874 03	Piston w/Ring Set (.50)	2
11	24 018 01	Retainer, piston pin	4

Ref. No.	Part No.	Description	No. Used
12	24 108 01	Ring Set (Std.)	2
*	24 108 02	Ring Set (.25)	2
*	24 108 03	Ring Set (.50)	2
13	52 139 09	Plug, cup	1
14	24 067 05	Connecting Rod (Std.)	2
*	24 067 06	Connecting Rod (.25)	2
15	12 422 09	Shim, camshaft green	A/R
*	12 422 13	Shim, camshaft black	A/R
*	12 422 07	Shim, camshaft white	A/R
*	12 422 08	Shim, camshaft blue	A/R
*	12 422 10	Shim, camshaft yellow	A/R
*	12 422 11	Shim, camshaft red	A/R
*	12 422 12	Shim, camshaft gray	A/R
16	24 012 05	Camshaft	1
17	24 014 78	Crankshaft	1
18	52 139 09	Plug, cup	1

\*Not Illustrated

Note: Obtain these items directly from Kohler Co., Kohler, WI 53044 1-800-544-2444

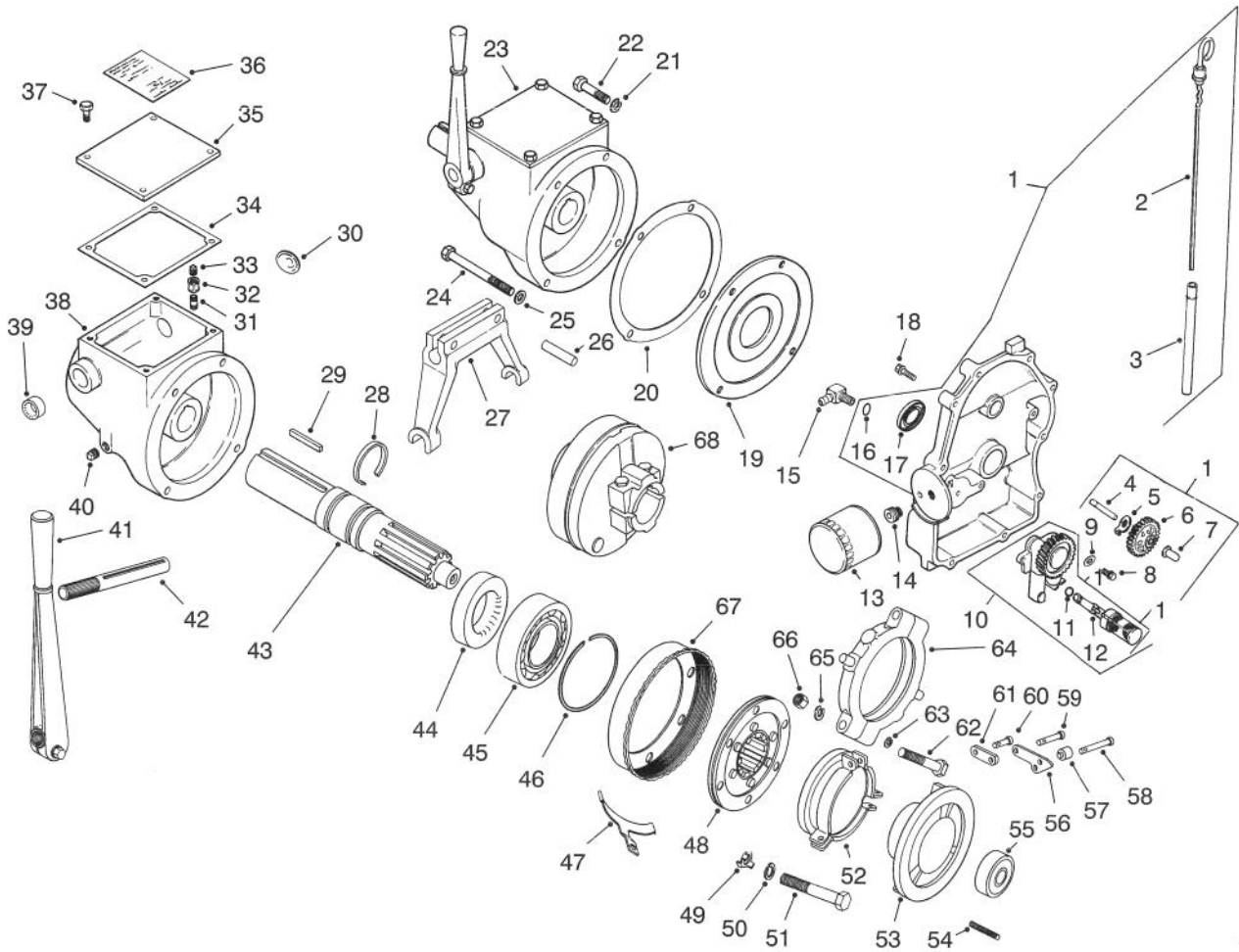


T-1985

## OIL PAN & LUBRICATION

Ref. No.	Part No.	Description	No. Used	Ref. No.	Part No.	Description	No. Used
1	24 009 90	Plate, closure (Incl. Ref. #2-7, 10-12, 16-17)	1	23	24 239 02	Clutch assembly (Incl. Ref. #29-31, 33-61)	1
2	24 038 05	Dipstick	1	24	24 086 29	Screw, hex cap	2
3	24 123 08	Tube, dipstick	1	25	X-25-34	Washer, plain	4
4	12 144 02	Shaft, governor gear	1	26	274101	Pin, roll	2
5	52 448 02	Tab, locking	1	27	A-234027	Yoke, clutch	1
6	24 043 12	Kit, governor gear w/pin (Incl. Ref. #7)	1	28	234037	Ring, retaining	2
7	12 380 01	Pin, governor regulating	1	29	24 340 01	Key, square	1
8	M0645025	Screw	2	30	X-230-20	Plug, welch	1
9	SM0631005	Washer, plain	2	31	47 136 02	Nipple, pipe	1
10	24 393 03	Oil pump assembly (Incl. Ref. #11 & 12)	1	32	X-216-25	Coupling, pipe	1
11	24 153 01	O-Ring, oil pick-up	1	33	270219	Plug, vent	1
12	24 381 03	Pick-up, oil	1	34		Gasket, clutch cover	1
13	12 050 01	Filter, oil	1	35		Cover, clutch	1
14	24 136 01	Nipple, oil filter	1	36		Plate, instruction	1
15	25 155 02	Connector, 90° hose	1	37		Screw	4
16	24 153 08	O-Ring	1	38		Housing, clutch	1
17	52 032 08	Seal, oil (PTO end)	1	39	X-271-19	Seal, oil	1
18	24 086 16	Screw, closure plate	10	40	X-75-2	Plug, pipe sq. hd.	2
19	24 146 10	Plate, adapter	1	41	A-234026	Lever, shifting	1
20	24 041 25	Gasket, clutch assembly	1	42		Shaft, yoke	1
21	X-23-1	Washer, lock	4	43	234039	Shaft, drive	1
22	24 086 28	Screw, hex cap	2	44	234038	Seal, oil	1
				45	234035	Bearing, ball	1
				46	48 141 02	Ring, snap	1
				47	234038	Lock, adjusting	1

Note: Obtain these items directly from Kohler Co., Kohler, WI 53044 1-800-544-2444



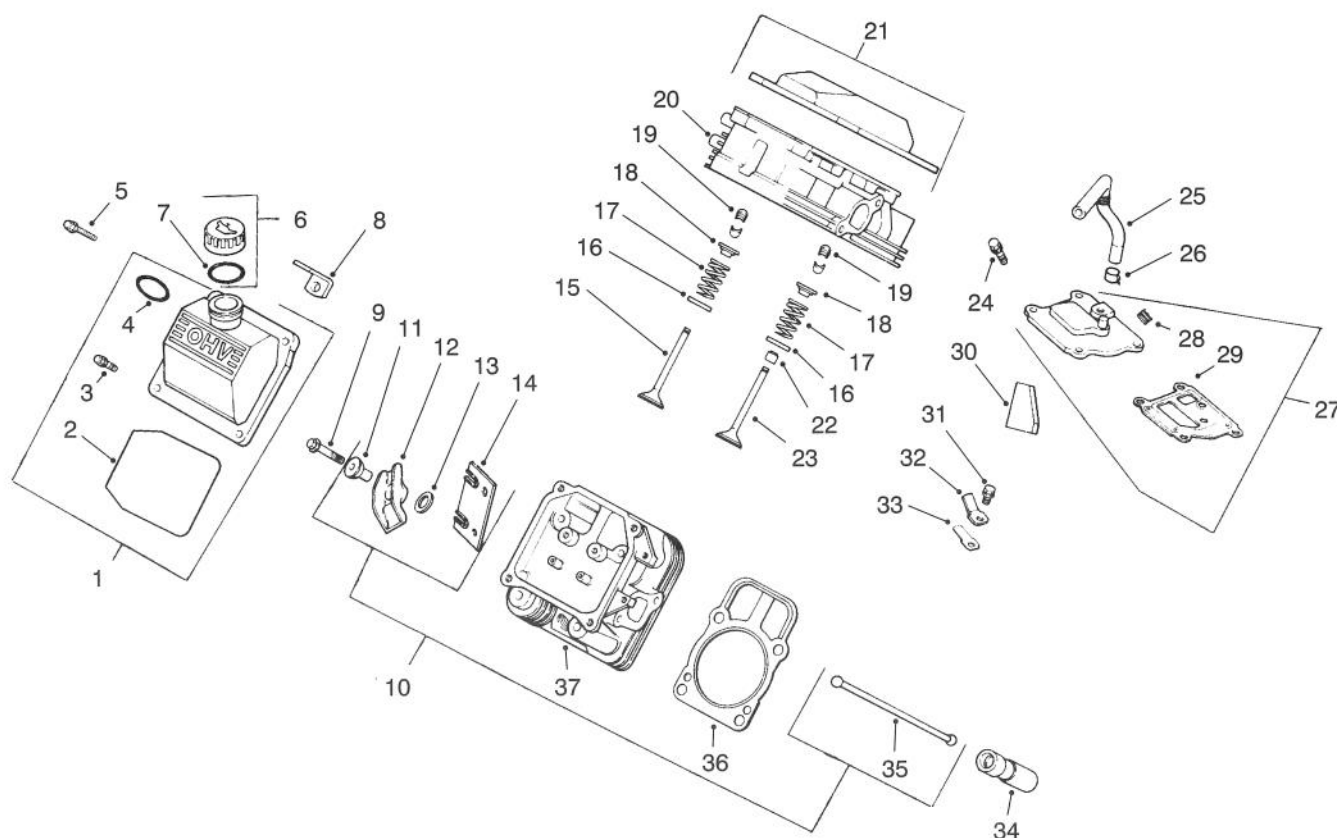
T-1985

## OIL PAN & LUBRICATION (Continued)

Ref. No.	Part No.	Description	No. Used
48	A-234044	Member, drive	1
49	234057	Lock, screw	2
50	X-22-1	Washer, lock	3
51	X-7-2	Screw, H.C.	1
52	234054	Sleeve, release	1
53	A-234045	Plate, pressure	1
54	234055	Spring, return	3
55	234042	Bearing, ball	1
56	234046	Lever, pressure plate	6
57	234048	Roller, pressure plate	3
58	234047	Pin, lever	3

Ref. No.	Part No.	Description	No. Used
59	234051	Pin, ling (long)	3
60	234052	Pin, link (short)	3
61	234050	Link, connecting	6
62	X-52-22	Screw	1
63	X-22-11	Washer, lock	1
64	A-234053	Bearing, release	1
65	X-21-1	Washer, lock	1
66	X-83-4	Nut, hex	1
67	234056	Ring, adjusting	1
68		Clutch Assembly	1

Note: Obtain these items directly from Kohler Co., Kohler, WI 53044 1-800-544-2444



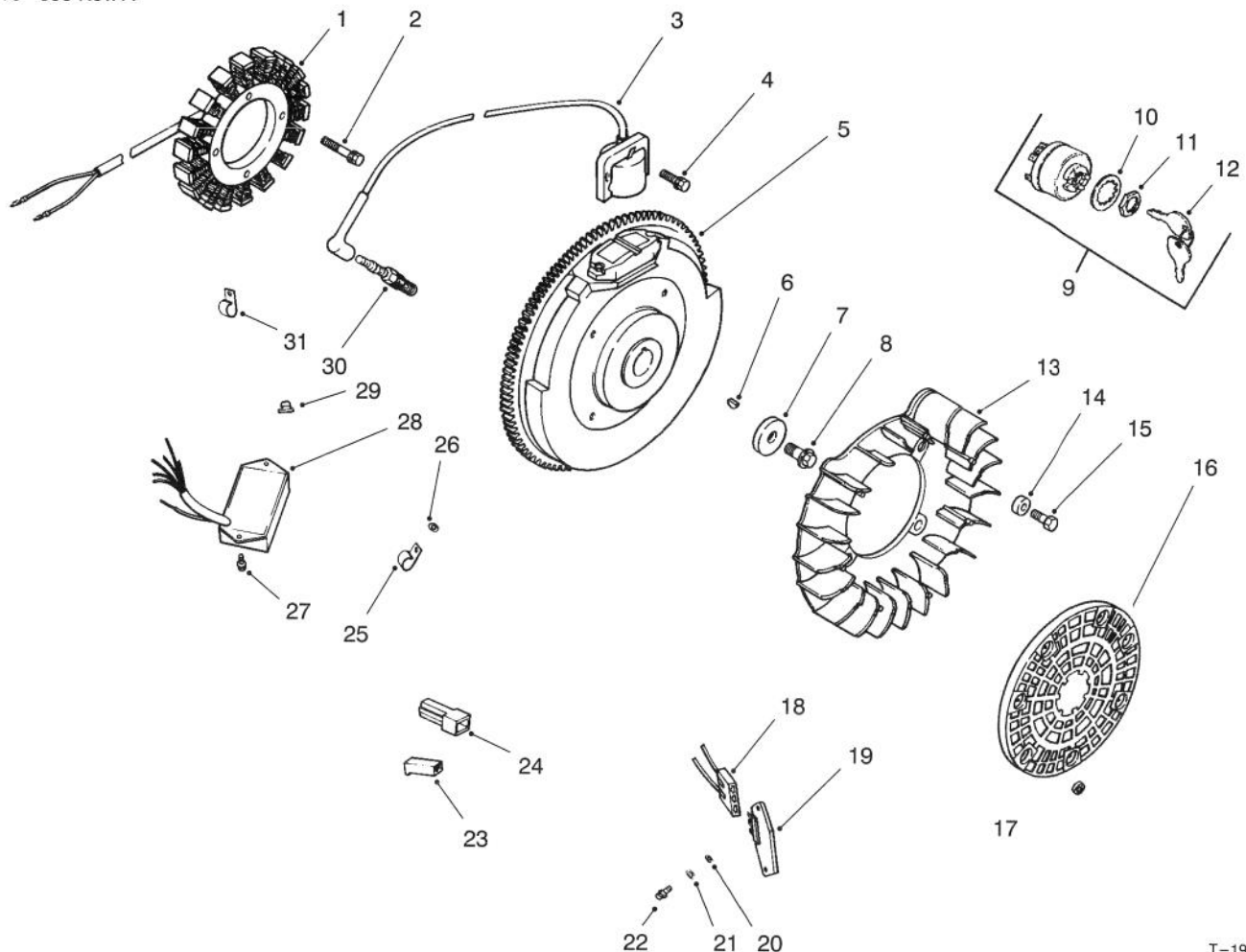
T-1986

## CYLINDER HEAD, VALVE, & BREATHER

Ref. No.	Part No.	Description	No. Used	Ref. No.	Part No.	Description	No. Used
1	24 755 75	Kit, valve cover – oil fill (Incl. Ref. #2-4)	1	20	24 318 09	Head assembly, #1 cylinder	1
2	24 153 12	O-Ring	1	21	24 755 74	Kit, valve cover – plain (Incl. Ref. #2 & 3)	1
3	24 086 32	Screw, shoulder	4	22	24 032 05	Seal, valve stem	2
4	24 153 09	O-Ring	1	23	24 017 01	Valve, intake (Std.)	2
5	12 086 16	Screw	8	*	24 017 02	Valve, intake (.25)	2
6	25 755 13	Kit, oil fill cap (Incl. Ref. #7)	1	24	SM0645020	Screw	4
7	12 153 03	O-Ring, cap oil fill cap	1	25	24 326 06	Hose, breather	1
8	24 445 01	Strap, lifting	1	26	X-426-9	Clamp, breather	1
9	M0640034	Screw	4	27	24 033 01	Kit, breather w/plug (Incl. Ref. #28 & 29)	1
10	24 755 61	Kit, valve train (Incl. Ref. #11-14, 35)	1	28	X-75-23	Plug, hex. ctsk.	1
11	24 194 02	Pivot, rocker arm	4	29	24 041 23	Gasket, breather	1
12	24 186 03	Arm, rocker	4	30	24 050 01	Filter, breather	1
13	SM0631005	Washer, plain	4	31	M0545010	Screw, breather reed retainer	1
14	24 146 09	Plate, guide	2	32	12 018 01	Retainer, breather reed	1
15	24 016 01	Valve, exhaust (Std.)	2	33	24 402 03	Reed, breather	1
*	24 016 02	Valve, exhaust (.25)	2	34	12 351 01	Lifter, valve	4
16	235011	Retainer, spring	1	35	24 411 04	Rod, push	4
17	24 089 02	Spring, valve	4	36	24 041 08	Gasket, cylinder head	2
18	12 173 01	Cap, valve spring	4	37	24 318 10	Head assembly, #2 cylinder	1
19	12 755 03	Kit, retainer	4				

\*Not Illustrated

Note: Obtain these items directly from Kohler Co., Kohler, WI 53044 1-800-544-2444



T-1987

## IGNITION & ELECTRICAL SYSTEM

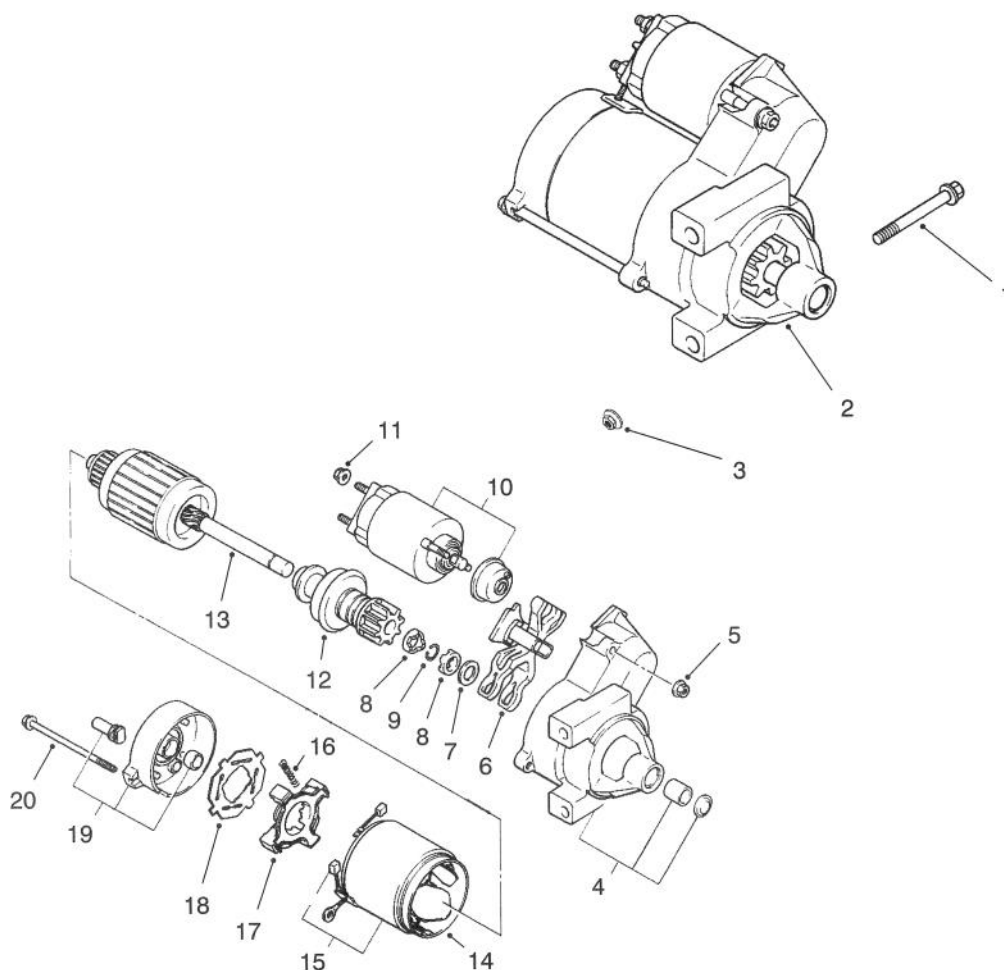
Ref. No.	Part No.	Description	No. Used
1	24 085 01	Stator - 15 amp	1
2	M0548025	Screw, stator mtg	2
3	24 584 03	Module, ignition	2
4	M0560020	Screw, ignition module	4
5	24 025 02	Flywheel assembly	1
6	X-42-15	Key	1
7	12 468 03	Washer, flywheel mtg	1
8	12 086 14	Screw, flywheel mtg.	1
9	25 099 04	Key switch assembly (Incl. Ref. #10-12)	1
10	48 468 02	Washer	1
11	48 100 01	Nut, key switch	1
†12	63-8360	Key	2
13	24 157 01	Fan	1
14	12 112 01	Spacer, fan	4
15	M0639016	Screw	4
16	24 162 03	Screen, grass	1

Ref. No.	Part No.	Description	No. Used
17	24 018 03	Retainer	3
18	236602	Connector (3 contact)	1
19	25 403 03	Rectifier-regulator 15 amp	1
20	X-25-92	Washer, plain	2
21	X-25-63	Washer, plain	1
22	24 086 18	Screw, phillips	2
23	277563	Connector (1 contact)	2
24	15 155 01	Connector (1 contact)	1
25	47 154 01	Clip, cable	1
26	X-25-63	Washer, plain	1
27	M0461013	Screw, phillips	2
28	24 584 05	Module, speed advance	1
29	24 100 02	Nut, plastic	2
30	12 132 02	Spark Plug	2
31	48 154 02	Clip, cable	1
*	24 176 30	Harness, wiring	1
*	24 518 04	Lead, green	1

\*Not Illustrated

†Obtain from The Toro Company

Note: Obtain these items directly from Kohler Co., Kohler, WI 53044 1-800-544-2444

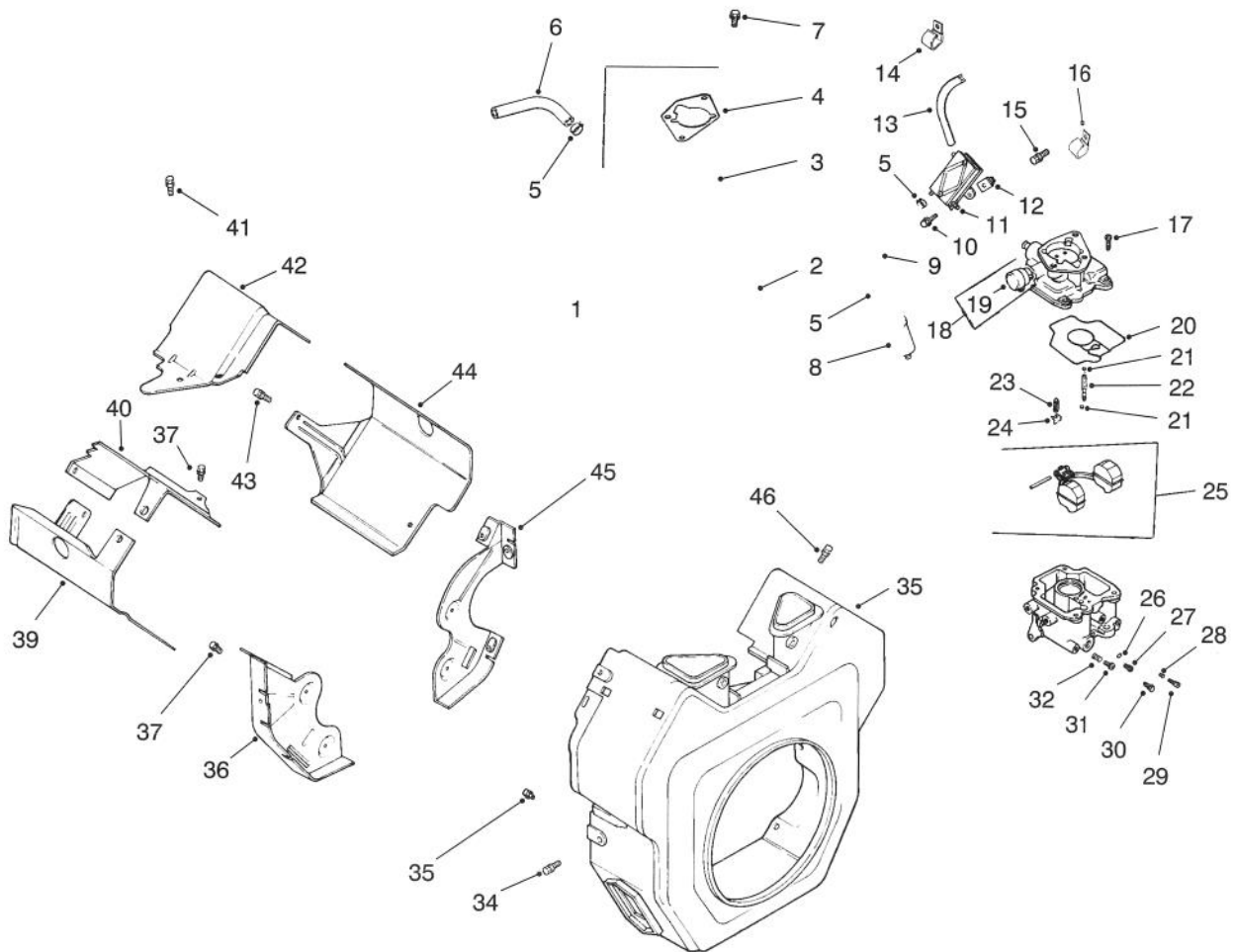


T-2182

## STARTING SYSTEM

Ref. No.	Part No.	Description	No. Used	Ref. No.	Part No.	Description	No. Used
1	M0839080	Screw	2	11	52 100 09	Nut, starter	1
2	24 098 01	Starter, solenoid shift (Incl. Ref. #4-20)	1	12	12 239 01	Drive, pinion	1
3	M0841080	Nut	2	13	12 170 03	Armature, starter	1
4	24 081 04	Drive, end cap	1	14	12 471 01	Frame	1
5	52 100 10	Nut, starter	2	15	52 221 01	Kit, brush & spring (Incl. Ref. #16)	1
6	12 090 10	Lever, starter drive	1	16	52 089 09	Spring, brush	4
7	52 468 14	Washer, thrust	1	17	52 323 03	Holder, brush	1
8	52 100 08	Nut, stop collar	2	18	52 168 01	Insulator	1
9	52 141 03	Ring, retainer	1	19	24 301 01	Commutator, end cap	1
10	52 435 02	Solenoid	1	20	52 211 05	Bolt, thru	2

Note: Obtain these items directly from Kohler Co., Kohler, WI 53044 1-800-544-2444



T-1988

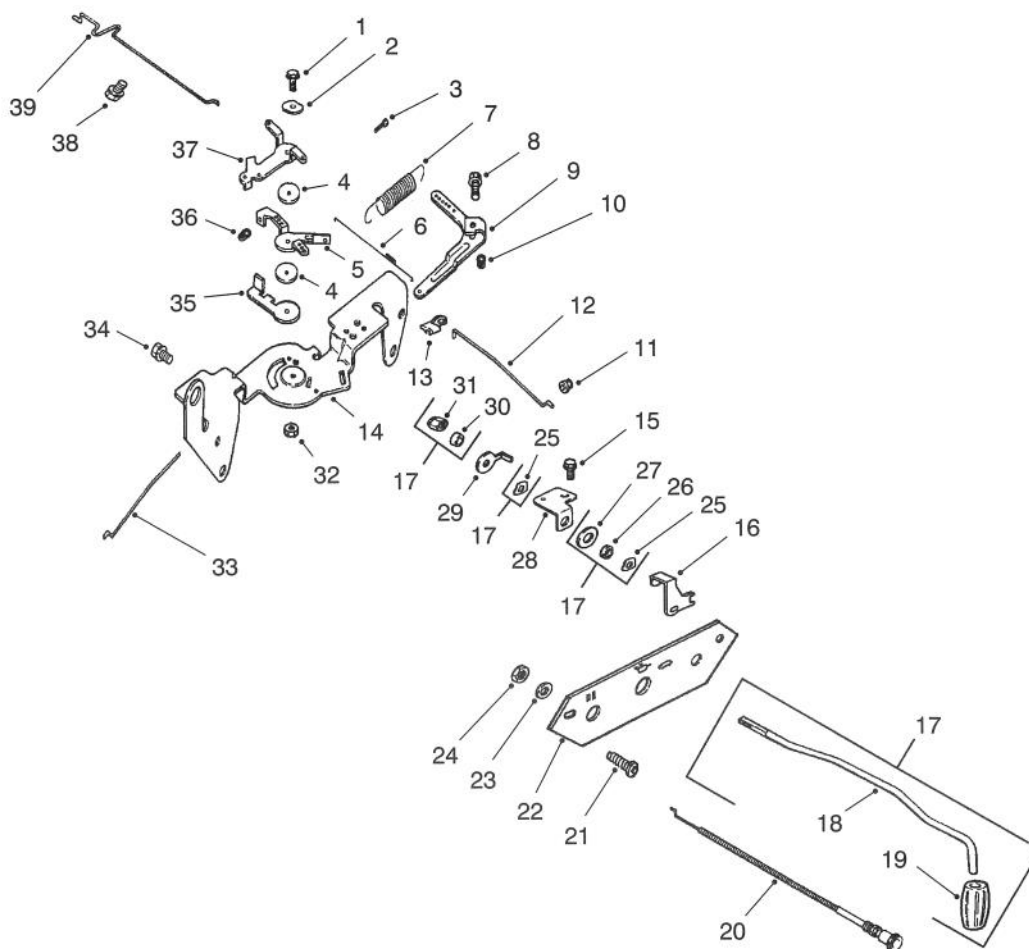
## BLOWER HOUSING, BAFFLES, & FUEL SYSTEM

Ref. No.	Part No.	Description	No. Used
1	24 853 01	Kit, carburetor w/gasket (Incl. Ref. #2-4)	1
2	24 041 17	Gasket, carburetor	1
3	24 053 01	Carburetor assembly (Incl. Ref. #17-32)	1
4	24 041 06	Gasket, air cleaner	1
5	X-426-9	Clamp, hose	6
6	24 353 02	Line, fuel	1
7	M0651030	Screw	2
8	25 050 03	Filter, fuel	1
9	25 353 10	Line, fuel	2
10	24 086 12	Screw, hex. cap.	2
11	24 393 04	Pump, fuel - pulse	1
12	24 100 01	Nut, plastic	2
13	15 353 04	Line, fuel	1
14	47 154 01	Clip, cable	1
15	M0650012	Screw	1
16	47 154 01	Clip, cable	1
17	24 086 09	Screw, carburetor body	4
18	24 757 07	Kit, choke repair (Incl. Ref. #19)	1
19	24 173 02	Cap, choke lever	1
20	24 041 09	Gasket, carburetor body	1
21	24 153 02	O-Ring, slow jet	2
22	24 337 01	Jet, slow	1
23	24 462 01	Valve, inlet needle	1
24	24 154 01	Clip, inlet needle valve	1
25	24 757 02	Kit, float repair	1

Ref. No.	Part No.	Description	No. Used
26	24 153 03	O-Ring, main jet	1
27	24 337 02	Jet, main	1
28	24 089 11	Spring, idle adjust	1
29	24 368 01	Needle, idle adjust	1
30	24 086 11	Screw, hex. cap	1
31	24 086 10	Screw, idle speed adjust	1
32	24 089 10	Spring, idle speed adjust	1
*	24 041 17	Gasket, carburetor	1
*	24 757 03	Kit, carburetor repair	1
*	24 755 01	Kit, high altitude (1500 m)	1
*	24 755 02	Kit, high altitude (3000 m)	1
33	24 027 18	Housing, blower	1
34	M0545016	Screw	3
35	SM0545020	Screw	2
36	24 146 02	Plate, backing - #2 side	1
37	M0645016	Screw	6
39	24 063 08	Baffle, cylinder barrel	1
40	24 063 24	Baffle, valley - #1 side	1
41	M0545010	Screw	2
42	24 063 17	Baffle, valley - #2 side	1
43	M0545016	Screw	2
44	24 063 20	Baffle, cylinder barrel	1
45	24 146 08	Plate, backing - #1 side	1
46	M0551016	Screw	1
*	24 100 01	Nut, plastic	2
*	24 100 02	Nut, plastic	2
*	25 139 16	Plug, button	1
*	24 113 03	Decal, key switch	1

\*Not Illustrated

Note: Obtain these items directly from Kohler Co., Kohler, WI 53044 1-800-544-2444



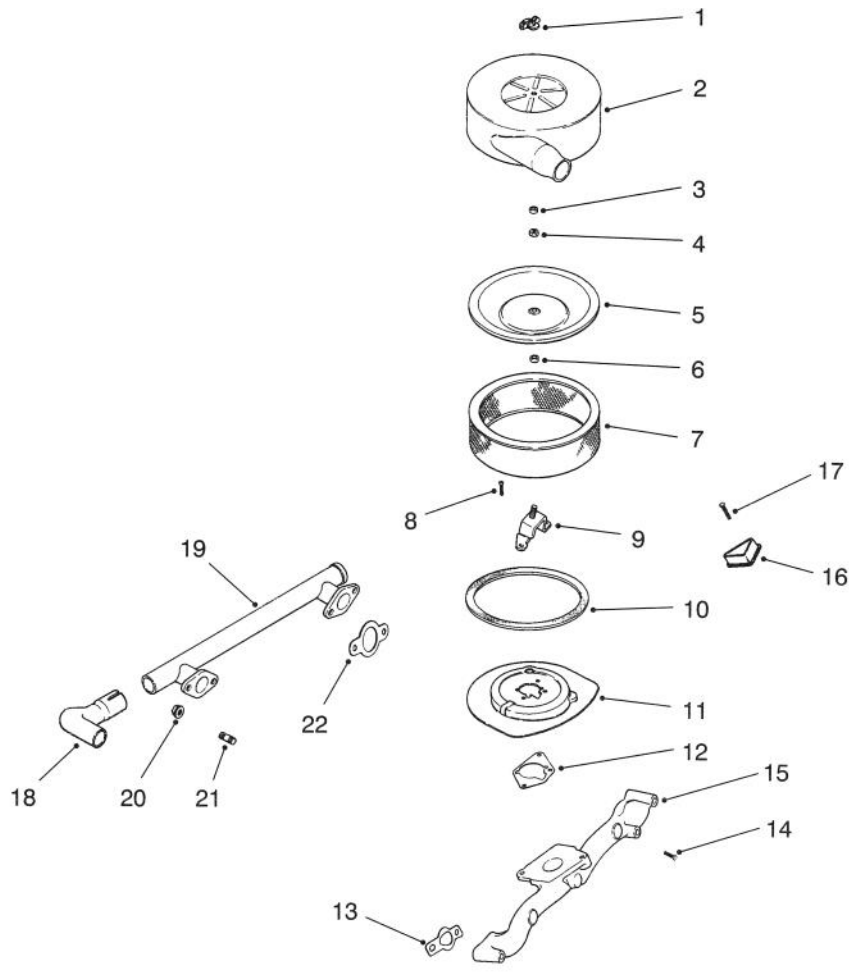
T-1989

## ENGINE CONTROLS

Ref. No.	Part No.	Description	No. Used	Ref. No.	Part No.	Description	No. Used
1	SM0545020	Screw	1	21	24 086 06	Screw, phillips	2
2	41 468 03	Washer, wave	1	22	24 126 06	Bracket, speed control shaft	1
3	M0401030	Screw	1	23	X-25-37	Washer, plain	1
4	24 468 01	Washer	3	24	X-83-4	Nut, hex	1
5	24 090 03	Lever, throttle control	1	25	24 468 03	Washer, wave	2
6	24 089 01	Spring, linkage	1	26	25 431 01	Spacer	1
7	24 089 18	Spring, governor	1	27	X-25-63	Washer, plain	1
8	SM0642025	Screw	1	28	24 378 01	Panel, control	1
9	24 090 14	Lever, governor	1	29	52 448 02	Tab, locking	1
10	SM0641060	Nut	1	30	12 112 01	Spacer	1
11	25 158 08	Bushing, linkage retaining	1	31	M0647060	Nut, hex	1
12	24 079 01	Linkage, throttle	1	32	M0547050	Nut	1
13	25 158 11	Bushing, linkage retaining	1	33	24 079 03	Linkage, speed control	1
14	24 126 13	Bracket, control	1	34	SM0645016	Screw	4
15	M0545010	Screw	2	35	24 090 07	Lever, throttle actuator	1
16	24 090 06	Lever, speed control shaft	1	36	M0446030	Nut	1
17	24 755 48	Kit, speed control (Incl. Ref. #18, 19, 21, 23, 24, 31 & 32)	1	37	24 090 05	Lever, choke	1
18	24 144 20	Shaft, speed control	1	38	SM0545016	Screw	1
19	24 341 02	Knob, speed control	1	39	24 079 02	Linkage, choke	1
20	24 225 01	Cable, choke	1	*	24 113 06	Decal, control panel	1

\*Not Illustrated

Note: Obtain these items directly from Kohler Co., Kohler, WI 53044 1-800-544-2444



T-2183

## AIR INTAKE, FILTRATION, & EXHAUST

Ref. No.	Part No.	Description	No. Used
1	12 100 01	Wing Nut	1
2	24 096 33	Cover, air cleaner	1
3	24 032 09	Seal	1
4	M0641060	Nut, hex	1
5	24 096 01	Cover, inner air cleaner	1
6	230046	Seal, air intake	1
7	47 083 03	Element, air cleaner	1
8	M0639016	Screw	3
9	24 126 50	Bracket, air cleaner	1
10	24 032 07	Seal, air cleaner	1
11	24 094 05	Base, air cleaner	1

Ref. No.	Part No.	Description	No. Used
12	24 041 06	Gasket, air cleaner base	1
13	24 041 01	Gasket, intake manifold	2
14	M0639055	Screw	4
15	24 164 14	Manifold, intake	1
16	24 096 17	Cover, blower housing	2
17	X-67-3	Screw, slotted hd.	2
18	24 382 04	Pipe, exhaust	1
19	24 164 11	Manifold, exhaust	1
20	M0841080	Nut	4
21	M0829033	Stud, exhaust	4
22	24 041 02	Gasket, exhaust	2

Note: Obtain these items directly from Kohler Co., Kohler, WI 53044 1-800-544-2444

# TORO PART NUMBER INDEX

Part No.	Description	Pg. No.	Ref. No.	Qty.	Part No.	Description	Pg. No.	Ref. No.	Qty.
3-3107	Hose	14	17	1	13-4490	Guard - Sheave	16	55	1
3-3107	Hose	1	24	1	13-4560	Weight - Flap	17	48	18
3-3175	Cover - Battery	15	39	1	13-4560	Weight - Flap	4	48	18
3-5967	Support - Battery	15	37	2	13-4570	Sprocket - Idler	7	52	1
3-8135	Spring	15	48	2	13-4590	Chain	7	53	1
3-9155	Key - Square	19	32	1	13-4700	Flap	17	47	1
4-1920	Washer	19	38	1	13-4700	Flap - Rubber	4	47	1
5-0678	Rod - Clamp, Battery	16	51	2	13-4760	Flap - Lower	17	44	1
5-0738	Key - Square	6	14	4	13-4760	Flap - Lower	4	44	1
5-1718	Key - Square	3	3	1	13-4800	Guard - Belt	18	54	1
8-2329	Air Cleaner Assembly	18	64	1	13-4800	Guard - Belt	5	57	1
12-8810	Spring	9	21	2	13-4880	Sprocket	3	24	1
13-0050	Spring	3	29	2	13-4960	Shaft W.A. - Plate, Finger	10	22	6
13-0050	Spring	15	45	2	13-5500	Bell Crank - Lift, L.H.	3	28	1
13-0100	Block - Pivot	3	13	2	13-5500	Bell Crank - Lift, L.H.	15	44	1
13-0100	Block - Pivot	15	16	2	13-5520	Spacer	15	9	2
13-0320	Collar - Lock	10	45	2	13-5520	Spacer	3	9	2
13-0330	Block - Pivot	17	40	1	13-5530	Rod - Adjustment, Spring	3	30	2
13-0330	Block - Pivot	10	47	2	13-5530	Rod - Adjustment, Spring	15	46	2
13-0330	Block - Pivot	4	40	1	13-5540	Link - Lift	10	39	2
13-0360	Spacer	10	36	2	13-5550	Arm - Gauge Wheel	10	48	2
13-0480	Spring	3	25	1	13-5570	Bar - Pivot	10	49	2
13-0480	Spring	15	41	1	13-5590	Rod W.A. - Adjustment	11	51	2
13-0560	Spacer	10	34	2	13-5670	Spacer - Locking	11	52	2
13-0600	Pulley - Idler	15	32	1	13-5680	Assembly - Jack	12	13	1
13-1390	Retainer - Flap	17	50	1	13-5790	Shield - Shaft, Side	2	50	1
13-1390	Retainer - Flap	4	50	1	13-5870	Shield - Front	2	48	1
13-1420	Cover - Inspection	17	30	1	13-5880	Shield - Shaft, Drop	2	49	1
13-1420	Cover - Inspection	4	30	1	13-5900	Shaft - Drive, Front	6	21	1
13-2240	Key - Square	17	5	1	13-5910	Shaft - Drive, Side	6	13	1
13-2240	Key - Square	4	5	1	13-6000	Base - Box, Gear	1	23	1
13-2480	Clamp - Finger	10	31	276	13-6020	Sheave	6	4	1
13-2640	Belt	5	59	1	13-6030	Pulley	4	4	1
13-2650	V-Belt	19	31	1	13-6050	Bushing	6	3	1
13-2670	Sheave	16	64	1	13-6070	Bushing	4	3	1
13-2680	Bushing	10	10	1	13-6090	Cover - Guard, Side	5	52	1
13-2680	Bushing	15	27	1	13-6110	Sprocket	6	7	1
13-2800	Pulley	17	4	1	13-6120	Frame	1	18	1
13-2810	Key - Square	17	9	1	13-6200	Pin - Hitch	2	46	1
13-2810	Key - Square	4	9	1	13-6200	Pin - Hitch	16	57	1
13-2840	Key - Square	10	23	1	13-6240	Rod - Adjustment	1	20	1
13-2870	Wheel - Gauge	11	50	2	13-6260	Screw - Adjustment	15	8	2
13-2930	Decal - Slow Moving Vehicle	9	10	1	13-6260	Screw W.A.	3	8	2
13-2970	Bushing	17	3	1	13-6280	Blower	17	33	1
13-3070	Spacer	10	37	2	13-6280	Blower and Throat	4	33	1
13-3090	Spring	10	30	66	13-6330	Key - Square	15	3	1
13-3130	Flap - End	17	45	2	13-6360	Rod - Lift	17	38	1
13-3130	Flap - End	4	45	2	13-6360	Rod - Lift, Flap	4	38	1
13-3320	Pulley	19	39	1	13-6390	Handle - Flap	17	35	1
13-3330	Bushing	19	33	1	13-6390	Handle - Flap	4	35	1
13-3350	Bracket W.A. - Mounting	4	10	1	13-6410	Decal	4	13	1
13-3350	Mounting Bracket W.A.	17	10	1	13-6410	Decal	17	15	1
13-3420	Assembly - Fan	4	21	1	13-6440	Assembly - Wheel	12	*	1
13-3420	Fan Assembly	17	21	1	13-6450	Bracket - Wheel, Caster	12	8	1
13-3490	Sleeve	12	16	1	13-6460	Wheel	12	6	1
13-3510	Bearing - Thrust	12	11	1	13-6490	Gasket - .002 Thk.	8	5	A/R
13-3610	Sleeve - Felt	12	12	1	13-6520	Seal	8	3	2
13-3710	Washer	16	68	1	13-6540	Shim - .010 Thk.	8	20	A/R
13-3710	Washer - Flat	9	25	2	13-6590	Gasket - .015 Thk.	8	8	A/R
13-3710	Washer - Special	3	37	1	13-6600	Gasket - .005 Thk.	8	7	A/R
13-3720	Key - Square	6	10	1	13-6610	Gasket - .003 Thk.	8	6	A/R
13-3790	Shaft - Fan	4	6	1	13-6630	Shim - .005 Thk.	8	21	A/R
13-3790	Shaft - Fan	17	6	1	13-6650	Housing	8	13	1
13-3850	Plate - Blower Access	17	12	1	13-6670	Pin - Connector	7	50	1
13-3850	Plate - Blower Access	4	12	1	13-6680	Chain	7	49	1
13-3930	Tank - Gas	14	23	1	13-6690	Coupling Half	6	15	2
13-3960	Strap Assy.	14	25	2	13-6700	Finger - Nylon	10	29	276
13-3970	Felt Strip	14	26	2	13-6730	Rivet	12	14	1
13-3970	Strip - Felt	14	29	2	13-6740	Handle	12	15	1
13-3990	Handle - Trip	3	26	1	13-6750	Ram	12	10	1
13-3990	Handle - Trip	15	42	1	13-6760	Decal - Caution	9	6	1
13-4310	Tongue	2	45	1	13-6790	Cable - Battery	15	47	2
13-4490	Guard - Sheave	3	31	1	13-6890	Guide - Rope	14	15	1

\*Not Illustrated

# TORO PART NUMBER INDEX (Cont.)

Part No.	Description	Pg. Ref.		Part No.	Description	Pg. Ref.			
		No.	Qty.			No.	Qty.		
13-6890	Guide - Rope	1	33	1	92-1580	Bearing Kit, Shield	6	32	2
13-6910	Spacer - Guide, Rope	14	14	1	92-1581	Decal - Safety	7	58	1
13-6910	Spacer - Guide, Rope	1	32	1	92-1582	Decal - Safety	6	35	1
13-7330	Stiffener - R.H.	9	*	1	92-2409	Hopper Assembly	9	*	1
13-7340	Stiffener - L.H.	9	16	1	92-8309	Decal - Warning	17	18	1
13-7350	Panel - Bottom, (R.H.)	9	29	1	92-8309	Decal - Warning	4	18	1
13-7360	Panel - Bottom, L.H.	9	23	1	93-0181	Tire	14	4	2
13-7370	Panel - Bottom, (Middle)	9	28	1	93-0181	Tire	1	7	2
13-7430	Decal - Warning	9	14	1	93-0182	Wheel Assembly	14	6	2
13-7460	Plate - Caution, Hitch	14	37	1	93-0182	Wheel Assembly	1	10	2
13-7460	Plate - Caution, Hitch	2	43	1	93-0183	Belt	18	57	1
20-9580	Rope	14	13	1	93-0184	Decal - Hopper	9	33	2
20-9580	Rope - Latch	1	31	1	93-0185	Assy. - Center Plate, Stake	10	27	60
27-7220	Detergent - Cleaning, Air	13	*	A/R	93-0187	Assy. - End Plate, Stake	10	28	3
33-1260	Assembly - Cover	13	11	1	93-0189	Assy. - End Plate, Stake	10	25	3
33-1270	Bowl - Clear	13	10	1	93-0197	Flex Tip W.A. - Reel	10	26	1
33-1280	Assembly - Sleeve	13	9	1	93-0198	Bracket - Support, Muffler	19	18	1
33-1300	Assembly - Element	13	6	1	93-0199	Strap - Muffler Support	19	23	1
33-1310	Baffle	13	5	1	93-4000	Strap - Muffler Support	19	22	1
33-1320	Assembly - Cup	13	4	1	93-4001	Pulley - 4 Groove	10	3	1
33-1330	Assembly - Nut	13	3	1	93-4003	Gate	9	13	1
33-1340	Assembly - Clamp	13	2	1	93-4009	Main Frame	14	11	1
33-1350	Assembly - Band, Mounting	13	1	2	93-4015	Panel - Front	9	5	2
42-1860	Front Shaft Assembly	6	36	1	93-4020	Cover - Inspection	5	61	1
42-1870	Rear Shaft Assembly	6	19	1	93-4020	Cover - Inspection	18	67	1
42-2290	Yoke and Tube	6	44	1	93-4021	Panel W.A. - R.H.	9	*	1
42-2300	Yoke and Shaft	7	46	1	93-4025	Panel W.A. - L.H.	9	3	1
42-2310	Yoke - Front	6	29	1	93-4027	Panel - Top	9	2	1
42-2340	Centralizer - Guard	6	33	1	93-4029	Screen - Top	9	1	2
42-2350	Shield - Inner	6	37	1	93-4030	Strap - Hopper, Front	9	31	2
42-2360	Yoke & Tube Assembly	6	25	1	93-4031	Strap - Hopper, Top	9	18	4
42-2370	Yoke and Shaft	6	26	1	93-4032	Shaft - Jack	3	1	1
42-2380	Shield - Outer	6	31	1	93-4032	Shaft - Jack	15	1	1
46-6810	Screw	19	19	2	93-4033	Pulley - Driver	3	36	1
47-2830	Screw - Machine	19	11	8	93-4033	Pulley - Driver	16	67	1
48-7700	Screw - Cap Hex. Hd.	19	24	3	93-4034	V-Belt	10	2	1
53-4420	Decal - Gas	14	28	1	93-4041	Decal - Op. Instructions	17	20	1
55-7290	Battery	15	38	1	93-4041	Decal - Op. Instructions	4	20	1
56-6210	Bearing	15	24	2	93-4042	Support W.A.	9	19	2
56-6220	Bearing	17	25	2	93-4409	Tongue W.A.	16	61	1
56-6220	Bearing	4	25	2	93-4415	Pulley - Idler	11	54	1
56-6230	Bearing	10	21	2	93-4416	Bracket - Support, Muffler	19	16	1
56-6230	Bearing	3	35	2	93-4417	U-Bolt	19	14	1
56-6230	Bearing	16	66	2	93-4418	Guard - Manifold, Exhaust	19	5	1
56-6250	Bearing	6	8	4	93-4419	Guard - Muffler, Rear	19	12	1
59-1460	Plug - Vent	8	26	1	93-4422	Guard - Belt	10	1	1
61-5950	Decal	15	40	1	93-4428	Spacer - Pulley	10	12	1
63-5210	Spindle - Driveside	16	65	1	93-4429	Washer - Pulley	11	60	1
63-5210	Spindle - Driveside	3	34	1	93-4430	Shaft	8	12	1
63-5250	Spacer	11	56	1	93-4433	Pulley Bracket W.A.	10	17	1
63-5300	Trailing Arm - L.H.	10	41	1	93-4434	Support Bracket W.A.	10	13	1
63-7722	Hose - Fuel Line	14	34	1	93-4438	Bracket - Belt Guard	3	40	1
63-8360	Key	19	7	2	93-4438	Bracket - Belt Guard	16	71	1
65-5871	Tube - Manual	9	34	1	93-4440	Bell Crank - Lift, R.H.	3	18	1
65-5890	Cap - Tube	9	35	2	93-4440	Bell Crank - Lift, R.H.	15	21	1
67-5360	Decal	17	11	1	93-4445	Trailing Arm - R.H.	10	11	1
67-5360	Decal	4	11	1	93-7307	Decal - Warning	17	19	1
67-5360	Decal	14	39	1	93-7307	Decal - Warning	4	19	1
67-5360	Decal - Caution	1	19	4	93-7701	Hose - Air Cleaner	18	65	1
67-7920	Decal - Toro	9	17	2	93-7703	Plate - Clamp Guard	19	2	2
67-9730	Bracket - Air Cleaner	18	63	1	93-7706	Tube - Spacer	15	33	1
68-3220	Key - Square	15	2	1	93-7707	Shield - Belt Guard	18	69	1
68-3220	Key - Square	3	2	1	93-7708	Strip - Sealing	9	42	1
70-2350	Gear Box - Complete	6	17	1	93-7708	Strip - Sealing	5	62	1
70-2360	Cap	8	17	1	93-7708	Strip - Sealing	18	68	1
70-2370	Gear - 23 Tooth	8	23	1	93-7709	Pad	14	27	1
70-2380	Key - Tapered	8	16	2	93-7709	Pad	2	41	1
70-2390	Shaft	8	24	1	93-7711	Hook - Transport	10	33	2
70-2410	Ring - Retaining	8	25	3	93-7715	Ball Bearing	11	62	4
70-2420	Cap	8	4	2	94-1756	Muffler Clamp Assembly	19	4	2
70-2440	Collar - Thrust	8	11	1	217-103	Bolt - Wheel	14	3	12
70-2450	Gear - 17 Tooth	8	15	1	217-103	Bolt - Wheel	1	8	12
92-1187	Quick Disconnect Kit	7	*	1	2112-11	Clamp - Muffler	19	26	1

\*Not Illustrated

# TORO PART NUMBER INDEX (Cont.)

Part No.	Description	Pg. No.	Ref. No.	Qty.	Part No.	Description	Pg. No.	Ref. No.	Qty.
2115-76	Kit - Center Parts	6	43	2	322-7	Screw - Cap Hex. Hd.	6	1	3
2115-78	Ring - Lock	7	47	8	322-7	Screw - Cap Hex. Hd.	15	29	3
2115-79	Ring - Lock	6	27	8	322-7	Screw - Cap Hex. Hd.	3	33	2
2115-80	Fitting - Grease	6	20	4	322-7	Screw - Cap Hex. Hd.	16	63	2
2115-81	Yoke	6	42	2	323-2	Screw - Cap Hex. Hd.	2	39	6
2115-85	Fitting - Grease	6	34	1	323-4	Screw - Cap Hex. Hd.	12	1	3
2115-88	Bearing & Cross Kit	6	30	2	323-4	Screw - Cap Hex. Hd.	10	4	9
2115-94	Yoke - Rear	6	38	1	323-5	Screw - Cap Hex. Hd.	12	3	3
222-8	Cap - Gas	14	24	1	323-5	Screw - Cap Hex. Hd.	15	49	4
232-27	Stem - Valve	14	5	2	323-6	Screw - Cap Hex Hd.	9	38	4
232-27	Stem - Valve	1	9	2	323-6	Screw - Cap Hex. Hd.	17	34	8
235-15	Grip - Handle	14	19	1	323-6	Screw - Cap Hex. Hd.	4	34	8
235-15	Grip - Handle	1	28	1	323-7	Screw - Cap Hex. Hd.	4	15	6
242-54	Hub	14	7	2	323-7	Screw - Cap Hex. Hd.	18	56	6
242-54	Wheel - Hub	1	11	2	323-8	Screw - Cap Hex. Hd.	14	22	1
242-55	Cap - Hub	1	1	2	323-8	Screw - Cap Hex. Hd.	1	25	1
242-55	Cap - Hub	14	43	2	323-9	Screw - Cap Hex. Hd.	19	9	4
2412-40	Clamp - Conduit	14	16	3	323-9	Screw - Cap Hex. Hd.	17	41	1
2412-40	Clamp - Conduit	1	34	3	323-9	Screw - Cap Hex. Hd.	4	41	1
2412-42	Clamp	18	66	2	323-9	Screw - Cap Hex. Hd.	10	44	5
2412-93	Clamp	14	36	1	323-10	Screw - Cap Hex. Hd.	19	37	1
2412-102	R-Clamp	9	36	2	323-10	Screw - Cap Hex. Hd.	11	61	1
2412-103	R-Clamp	19	30	1	324-7	Screw - Cap Hex. Hd.	15	10	3
2412-108	Clamp - Hose	14	31	2	324-7	Screw - Cap Hex. Hd.	3	10	3
250-5	Strap - Locking	15	36	2	324-10	Screw - Cap Hex. Hd.	3	41	1
251-246	Collar - Locking, Eccentric	6	22	4	324-10	Screw - Cap Hex. Hd.	16	60	1
253-127	Seal	14	10	2	325-3	Screw - Cap Hex. Hd.	1	15	2
253-127	Seal	1	14	2	325-4	Screw - Cap Hex. Hd.	6	18	4
254-57	Cup - Bearing	8	9	3	325-5	Screw - Cap Hex. Hd.	1	22	4
254-58	Cone - Bearing	8	10	3	325-5	Screw - Cap Hex. Hd.	6	39	4
254-61	Cup - Bearing	1	6	2	325-5	Screw - Cap Hex. Hd.	2	52	4
254-61	Cup - Bearing	14	40	2	325-5	Screw - Cap Hex. Hd.	11	55	1
254-61	Cup - Bearing	8	18	1	325-6	Screw - Cap Hex. Hd.	6	12	4
254-62	Cone - Bearing	14	2	2	325-6	Screw - Cap Hex. Hd.	17	24	7
254-62	Cone - Bearing	1	5	2	325-6	Screw - Cap Hex. Hd.	4	24	7
254-62	Cone - Bearing	8	19	1	325-6	Screw - Cap Hex. Hd.	9	27	3
254-62	Cone - Bearing	14	9	2	325-7	Screw - Cap Hex Hd.	9	41	2
254-65	Cone - Bearing	1	13	2	325-7	Screw - Cap Hex. Hd.	18	58	1
254-65	Cone - Bearing	14	8	2	325-7	Screw - Cap Hex. Hd.	5	60	1
254-66	Cup - Bearing	1	12	2	325-9	Screw - Cap Hex. Hd.	10	43	4
254-66	Cup - Bearing	11	59	2	325-12	Screw - Cap Hex. Hd.	7	55	1
256-298	Bushing	7	56	1	325-13	Screw - Cap Hex. Hd.	12	9	1
2710-29	Link - Offset	7	54	1	325-14	Screw - Cap Hex. Hd.	10	8	2
2710-30	Link - Connecting	3	16	2	325-20	Screw - Cap Hex. Hd.	15	13	1
282-22	Clevis	15	19	2	327-6	Screw - Cap Hex. Hd.	10	18	1
282-22	Clevis	3	15	2	327-6	Screw - Cap Hex. Hd.	16	62	2
283-2	Pin - Clevis	15	18	2	328-10	Bolt - Hex. Hd.	10	40	1
283-2	Pin - Clevis	9	11	3	328-23	Bolt - Hex. Hd.	2	36	2
283-39	Pin - Clevis	6	40	1	3217-5	Nut - Hex	17	51	2
283-46	Pin - Clevis	8	14	2	3217-5	Nut - Hex.	5	51	2
285-12	Plug - Pipe	7	45	1	3217-5	Nut - Hex.	16	54	4
302-2	Fitting - Grease	11	58	2	3217-7	Nut - Hex	4	8	1
302-5	Fitting - Grease	14	30	1	3217-7	Nut - Hex.	17	8	1
304-75	Fitting - Tube	17	43	10	3217-7	Nut - Hex.	10	9	4
321-3	Screw - Cap Hex. Hd.	4	43	10	3217-7	Nut - hex.	12	4	3
321-3	Screw - Cap Hex. Hd.	17	14	4	3217-8	Nut - Hex.	3	20	5
321-4	Screw - Cap Hex. Hd.	4	14	4	3217-8	Nut - Lock	15	26	5
321-4	Screw - Cap Hex. Hd.	3	39	1	3217-9	Nut - Hex	1	35	4
321-4	Screw - Cap Hex. Hd.	5	53	2	3217-9	Nut - Hex.	6	9	5
321-4	Screw - Cap Hex. Hd.	18	55	2	3217-9	Nut - Hex.	11	53	2
321-4	Screw - Cap Hex. Hd.	16	69	1	3217-12	Nut - Hex	2	38	2
321-5	Screw - Cap Hex. Hd.	17	46	14	3218-2	Nut - Jam	18	62	2
321-5	Screw - Cap Hex. Hd.	4	46	14	3218-3	Nut - Jam	15	5	6
321-6	Screw - Cap Hex. Hd.	19	35	3	3218-3	Nut - Jam	3	5	8
321-8	Screw - Cap Hex. Hd.	17	49	18	3218-3	Nut - Jam	6	5	6
321-8	Screw - Cap Hex. Hd.	4	49	18	3218-3	Nut - Jam	14	21	1
321-13	Screw - Cap Hex. Hd.	4	1	3	3218-3	Nut - Jam	1	26	1
322-1	Screw - Cap Hex. Hd.	18	52	1	3218-5	Nut - Hex.	4	17	4
322-1	Screw - Cap Hex. Hd.	5	54	1	3218-5	Nut - Hex.	15	34	2
322-5	Screw - Cap Hex. Hd.	8	1	24	3218-5	Nut - Jam	17	17	4
322-5	Screw - Cap Hex. Hd.	18	61	1	3218-6	Nut - Jam	1	21	1
322-6	Screw - Cap Hex. Hd.	19	13	2	3218-6	Nut - Jam	17	39	2
322-7	Screw - Cap Hex. Hd.	17	1	3	3218-6	Nut - Jam	4	39	2

\*Not Illustrated

# TORO PART NUMBER INDEX (Cont.)

Part No.	Description	Pg. Ref.		Part No.	Description	Pg. Ref.			
		No.	Qty.			No.	Qty.		
3219-3	Nut - Hex	15	17	2	3256-35	Washer - Flat	19	8	1
3219-3	Nut - Hex	3	14	2	3256-55	Washer - Flat	9	20	28
3229-7	Bolt - Carriage	9	15	50	3256-82	Washer - Flat	19	15	2
3234-33	Screw - Cap Hex. Hd.	18	70	2	3257-8	Key - Woodruff	6	23	1
3234-33	Screw - Hex Flange Hd.	9	4	96	3258-19	Screw - Machine	13	7	2
3243-6	Screw - Set	15	4	2	3258-165	Screw - Rd. Hd.	9	32	2
3243-6	Screw - Set	3	4	2	3259-15	Screw - Drive	2	44	4
3244-14	Screw - Set, - Sq. Hd.	17	16	4	3272-6	Pin - Cotter	6	24	1
3244-14	Screw - Set, Square Hd.	4	16	4	3272-10	Pin - Cotter	3	17	2
3244-21	Screw - Set	15	35	2	3272-10	Pin - Cotter	15	20	2
3247-3	Screw - Set	6	16	4	3272-10	Pin - Cotter	3	27	1
3247-6	Screw - Set	6	6	6	3272-10	Pin - Cotter	15	43	1
3247-6	Screw - Set	3	23	2	3272-12	Pin - Cotter	9	7	3
3250-32	Screw - Phillips Pan Hd.	9	30	9	3272-12	Pin - Cotter	17	37	1
3253-3	Washer - Lock	4	2	9	3272-12	Pin - Cotter	4	37	1
3253-3	Washer - Lock	17	13	6	3272-17	Pin - Cotter	14	1	3
3253-3	Washer - Lock	19	34	3	3272-17	Pin - Cotter	1	2	3
3253-3	Washer - Lock	3	38	1	3272-22	Pin - Cotter	3	22	2
3253-3	Washer - Lock	16	53	5	3272-22	Pin - Cotter	15	23	2
3253-4	Washer - Lock	17	2	4	3290-55	Rivet - Pop	14	38	4
3253-4	Washer - Lock	6	2	3	3290-211	Washer - Spring	3	42	1
3253-4	Washer - Lock	19	25	2	3290-211	Washer - Spring	16	70	1
3253-4	Washer - Lock	15	28	5	3290-343	Pin - Hair Cotter	16	58	1
3253-4	Washer - Lock	3	32	2	3290-343	Pin - Hair, Cotter	2	47	1
3253-4	Washer - Lock	5	55	1	3296-23	Nut - Lock	12	5	1
3253-6	Washer - Lock	3	19	5	3296-23	Nut - Lock	10	15	1
3253-6	Washer - Lock	15	25	5	3296-23	Nut - Lock	9	24	3
3253-7	Washer - Lock	10	7	2	3296-39	Nut - Lock	17	23	7
3253-7	Washer - Lock	6	11	13	3296-39	Nut - Lock	4	23	7
3253-7	Washer - Lock	1	16	6	3296-39	Nut - Lock	9	39	4
3253-7	Washer - Lock	9	40	2	3296-39	Nut - Lock	16	50	4
3253-9	Washer - Lock	2	37	2	3296-42	Nut - Lock	17	42	42
3253-21	Washer - Lock	12	2	3	3296-42	Nut - Lock	4	42	42
3253-21	Washer - Lock	10	5	7	3296-47	Nut - Lock	19	17	4
3253-21	Washer - Lock	17	7	9	3296-53	Nut - Lock	10	14	1
3253-21	Washer - Lock	4	7	9	3296-53	Nut - Lock	16	56	2
3253-21	Washer - Lock	19	36	1	32103-12	Nut - Wing	17	31	4
3253-21	Washer - Lock	2	40	6	32103-12	Nut - Wing	4	31	4
3254-2	Washer - Lock	8	2	24	32104-95	Screw - Self Tapping	14	18	2
3254-2	Washer - Lock ITLW	19	27	1	32104-95	Screw - Self-Tapping	1	29	2
3254-8	Washer - Lock, Int. Tooth	11	57	2	32104-96	Screw - Self Tapping	14	12	1
3256-22	Washer - Flat	17	32	32	32104-96	Screw - Self-Tapping	1	30	1
3256-22	Washer - Flat	4	32	32	32104-109	Screw	14	33	1
3256-22	Washer - Flat	14	35	1	32104-109	Screw - Cap Hex. Hd.	5	58	4
3256-22	Washer - Flat	16	52	4	32107-11	Nut - Square	13	8	2
3256-23	Washer - Flat	19	40	2	32121-45	Pin - Roll	10	46	2
3256-23	Washer - Flat	18	53	1	32122-42	Screw - Machine	9	22	36
3256-23	Washer - Flat	5	56	1	32128-20	Nut - Lock, Flange	19	1	4
3256-23	Washer - Flat	7	57	3	32128-25	Nut - Lock, Flange	18	60	4
3256-24	Washer - Flat	10	6	7	32128-29	Nut - Lock, Flange	19	10	4
3256-24	Washer - Flat	3	12	2	32128-32	Nut - Lock	9	9	193
3256-24	Washer - Flat	15	15	7	32128-32	Nut - Lock, Flange	18	71	2
3256-24	Washer - Flat	17	22	14	32128-49	Nut - Flange, Lock	15	12	1
3256-24	Washer - Flat	4	22	14	32136-1	Nut - Slotted	1	3	2
3256-24	Washer - Flat	2	51	4	32136-1	Nut - Slotted	14	42	2
3256-26	Washer - Flat	12	7	2	32140-94	Screw - Cap Hex. Hd.	10	32	276
3256-26	Washer - Flat	15	11	1	32152-2	Nut - Lock	10	24	12
3256-26	Washer - Flat	10	16	7	32153-2	Nut	3	11	2
3256-26	Washer - Flat	1	17	6	32153-2	Nut	10	35	4
3256-26	Washer - Flat	9	26	9	32153-2	Nut - Lock	15	14	2
3256-26	Washer - Flat	7	51	8	32153-2	Nut - Lock	9	37	2
3256-27	Washer - Flat	9	8	3	32153-2	Nut - Lock	2	42	2
3256-27	Washer - Flat	17	36	1	32153-3	Nut - Lock	19	3	4
3256-27	Washer - Flat	4	36	1	32153-3	Nut - Lock	14	32	4
3256-28	Washer - Flat	14	20	1	32153-3	Nut - Lock	18	59	2
3256-28	Washer - Flat	3	21	2	32153-5	Nut	10	38	6
3256-28	Washer - Flat	15	22	2	32153-5	Nut - Lock	17	27	8
3256-28	Washer - Flat	1	27	1	32153-5	Nut - Lock	4	27	8
3256-29	Washer - Flat	1	4	2	32153-6	Nut	10	42	1
3256-29	Washer - Flat	14	41	2					

\*Not Illustrated

## PRODUCT CHANGES

In an effort to make improvements available to TORO owners as quickly as possible – minor changes are incorporated into Toro's products from time to time that do not become immediately shown in the Parts Catalog. If such a change has been made in your unit – which is not reflected in your manual – see your TORO Distributor or his Authorized TORO Service Dealer for information and part numbers.

## IDENTIFICATION AND ORDERING

### MODEL AND SERIAL NUMBERS

The Rake-O-Vac has two identification numbers; a model number and a serial number. The two numbers are stamped on a plate which is located on the left side of the frame behind the hitch. In any correspondence concerning the Rake-O-Vac – supply model and serial numbers to assure that correct information and replacement parts are obtained.

To order replacement parts from an Authorized TORO Service Dealer – supply the following information:

1. Model and serial number of the Rake-O-Vac.
2. Part number – description – and the quantity of part(s) desired.

**NOTE:** Do not order by reference number if a parts catalog is being used; use the PART NUMBER.

## TABLE OF CONTENTS

Description	Page	Description	Page
Frame Assembly (Model 07052) .....	1-2	Jackshaft And Lifting Mechanism (Model 07050) .....	15-16
Jackshaft And Lifting Mechanism (Model 07052) .....	3	Blower And Throat Assembly (Model 07050) .....	17-18
Blower And Throat Assembly (Model 07052) .....	4-5	Engine Assembly .....	19
Drive Shafts & Gear Box (Model 07052) .....	6-7	Crankshaft & Crankcase .....	20
Gear Box Assembly (Model 07052) .....	8	Oil Pan & Lubrication .....	21-22
Hopper And Rear Tailgate (Model 07050 & 07052) .....	9	Cylinder Head, Valve, & Breather .....	23
Flex Tip Reel And Trailing Arm (Model 07050 & 07052) .....	10-11	Ignition & Electrical System .....	24
Jack Assembly (Models 07050 & 07052) .....	12	Starting System .....	25
Air Cleaner Assembly No. 8-2329 .....	13	Blower Housing, Baffles, & Fuel System .....	26
Frame Assembly (Model 07050) .....	14	Engine Controls .....	27
		Air Intake, Filtration, & Exhaust .....	28
		TORO Parts Index .....	29-32





