



# Spindle Kit

## TITAN® Zero-Turn-Radius Riding Mower

Model No. 121-5680

Model No. 121-5681

### Installation Instructions

**Note:** Determine the left and right sides of the machine from the normal operating position.

## Installation

### Loose Parts

Use the chart below to verify that all parts have been shipped.

Procedure	Description	Qty.	Use
1	No parts required	–	Prepare the mower.
2	Spindle housing Washer (.88 inch O.D.)	1	Install the spindle housing.

# 1

## Preparing the Mower

### No Parts Required

#### Procedure

1. Thoroughly clean mower deck. All debris must be removed to ensure the spindle housing will fit properly against mower deck.
2. Repair all bent or damaged areas of mower deck and replace any missing parts.

# 2

## Installing the Spindle Housing

### Parts needed for this procedure:

1	Spindle housing
	Washer (.88 inch O.D.)

#### Procedure

#### **▲ WARNING**

While maintenance or adjustments are being made, someone could start the engine. Accidental starting of the engine could seriously injure you or other bystanders.

Remove the key from the ignition switch, engage parking brake, and pull the wire(s) off the spark plug(s) before you do any maintenance. Also push the wire(s) aside so it does not accidentally contact the spark plug.

1. Park the machine on a level surface, disengage the blade control switch, and move the motion control levers outward to the neutral position and engage parking brake.
2. Stop the engine and remove the key.

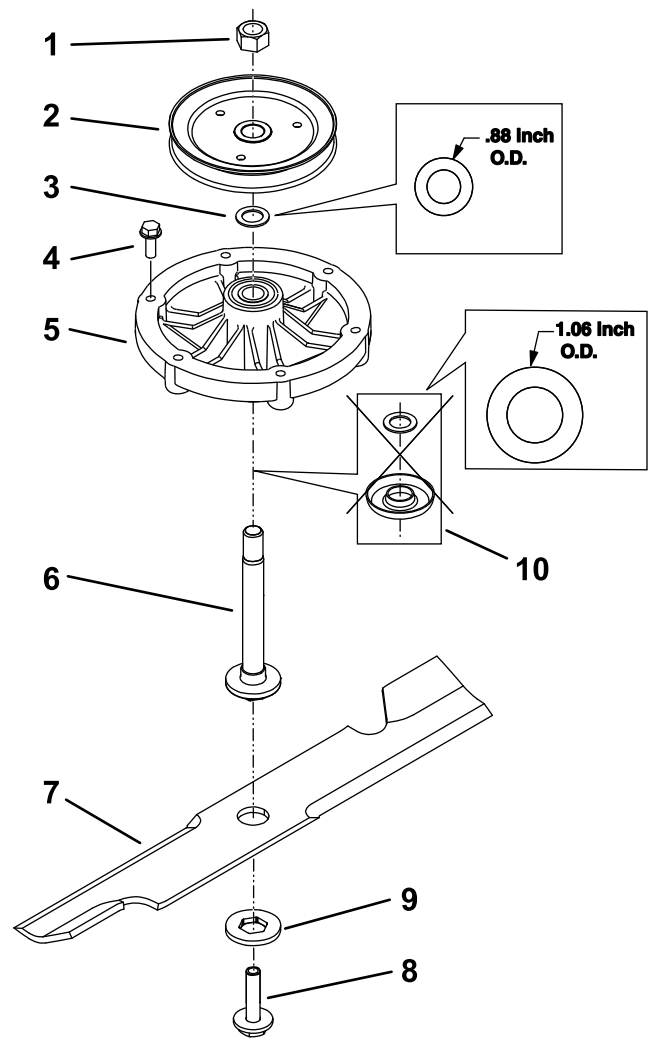
3. Allow the machine to cool before starting these instructions.
4. Raise the deck to the transport position. Lift the front of the machine and support using jack stands or equivalent support.

**⚠ CAUTION**

Raising the mower deck for service or maintenance relying solely on mechanical or hydraulic jacks could be dangerous. The mechanical or hydraulic jacks may not be enough support or may malfunction allowing the machine to fall, which could cause injury.

**Do Not** rely solely on mechanical or hydraulic jacks for support. Use adequate jack stands or equivalent support.

5. Remove and retain the belt guards and the hardware.
6. Carefully remove the blade. Wrap the blade or wear gloves and use caution when servicing them. Inspect blade and sharpen or replace as required.
7. Remove and retain the pulley.
8. Remove the existing spindle housing. Retain all hardware and spindle as shown in Figure 1. Discard the existing washer and bearing shield shown in Figure 1.
9. Install the spindle housing provided in this kit onto the mower deck and tighten the screws to 200-250 in-lb (23-28 N-m) (Figure 1).
10. Apply food grade anti-seeze (i.e. Mobil® HTS grease) between the spindle and bearings. Do not use a copper or nickel based anti-seeze.
11. Install the spindle, new washer, pulley and spindle nut. Torque the spindle to 75-85 ft-lb (102-115 N-m).
12. Apply lubricant to the threads of the blade bolt as needed to prevent seizing. Copper based anti-seize is preferable. Grease is an acceptable substitute. Reinstall the blade and sheave as shown in Figure 1. Refer to the *Operator's Manual* for more information on blade installation.
13. Install the belt guards.
14. Remove the jack stands and lower the machine.



**Figure 1**

- |  |   |
|--|---|
| 1. Spindle nut— torque to 75-85 ft-lb (102-115 N-m)          | 6. Spindle— lubricate with food grade anti-seeze (i.e. Mobil® HTS grease) |
| 2. Pulley  | 7. Blade  |
| 3. New flat washer   | 8. Blade bolt— torque to 32-42 ft-lb (43-57 N-m)                          |
| 4. Spindle housing bolt— torque to 200-250 in-lb (23-28 N-m) | 9. Hex drive washer   |
| 5. Spindle housing   | 10. Remove existing washer and bearing shield                             |