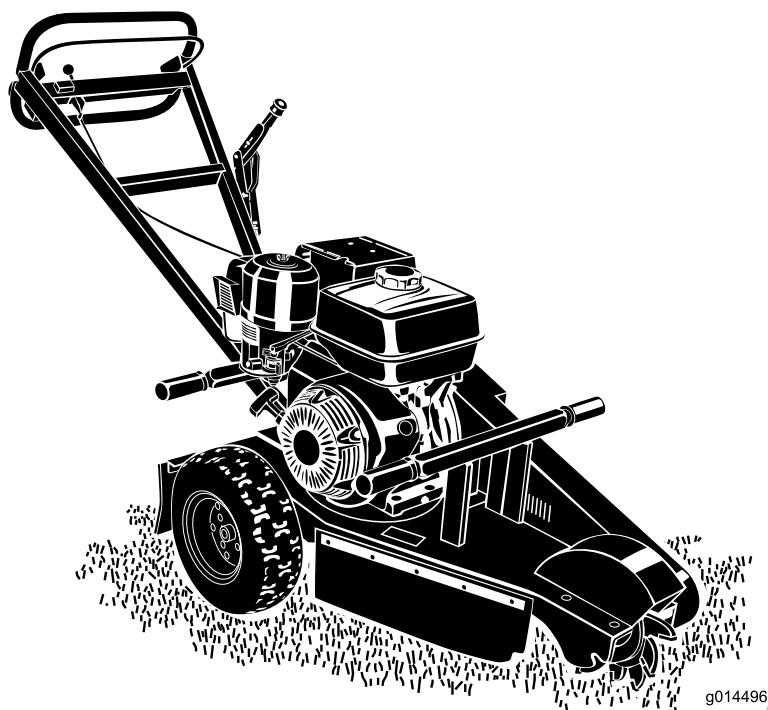




STUMP GRINDER

Model No. SG390HN—Serial No. 312000000 and Up

Picture below may not reflect actual product.



Parts Manual

Ordering Replacement Parts

To order replacement parts, please supply the part number, the quantity, and the description of each part desired.

Understanding Reference Numbers

Each identified part in an illustration has a reference number. The reference number for a part also appears in the parts list, along with other information about the part.

This catalog uses two special reference number formats, one to indicate parts in a service assembly and another to indicate the quantity of a given part in an illustration.

Service Assembly Reference Numbers

Parts in service assemblies have reference numbers in the form a:b. The a represents the reference number of the entire service assembly and the b represents a sequential number unique to each part within the service assembly.

For example, a wheel assembly might be identified by reference number 6, the tire by 6:1, the valve by 6:2, and the wheel by 6:3. When you order the assembly identified by reference number 6, you receive all parts identified by reference numbers 6:1, 6:2, and 6:3. However, you may also order any part individually. Reference numbers of this type appear in illustration and in parts lists.

Reference Numbers Indicating Quantity

In an illustration, if a reference number indicates more than one part, the reference number has the form nX y. The n represents the quantity of the part, the X is the multiplication symbol, and the y represents the reference number.

For example, in an illustration, the reference number 2X 37 means that two of the parts identified by reference number 37 are indicated.

List of Abbreviations

AR: as required	HJ: hex jam	PTH: phillips truss head
ASM: assembly	HLH: hex lag head	PTO: power-take-off
BBC: blade brake control	HOC: height-of-cut	RH: right hand
BHTF: button head thread forming	HSBH: hex socket button head	ROPS: roll-over protection system
CARR: carriage	HSFH: hex socket flat head	RRB: rear roller brush
CCW: counter clockwise	HSH: hex socket head	SFH: slotted fillister head
CW: clockwise	HWH: hex washer head	SHH: slotted hex head
DEG: degrees	HWHTF: hex washer head thread forming	SHWH: slotted hex washer head
DPA: Dual Point Adjustment	HYD: hydraulic	SPH: slotted pan head
ECM: electronic control module	LH: left hand	SQH: square head
EXT: external	LP: Liquid Propane	SRH: slotted round head
FH: flat head	NI: nylon insert	STD: standard
GA: gauge	NPTF: national pipe thread fine	TAP: self tapping
HD: heavy-duty	PFH: phillips flat head	TTH: torx truss head
HF: hex flange	PPH: phillips pan head	
HH: hex head	PPHTF: phillips pan head thread forming	
HHF: hex head flange	PRH: phillips round head	
HHFTF: hex head flange thread forming		

Touch Up Paint

Exmark black touch up spray paint – gloss black.

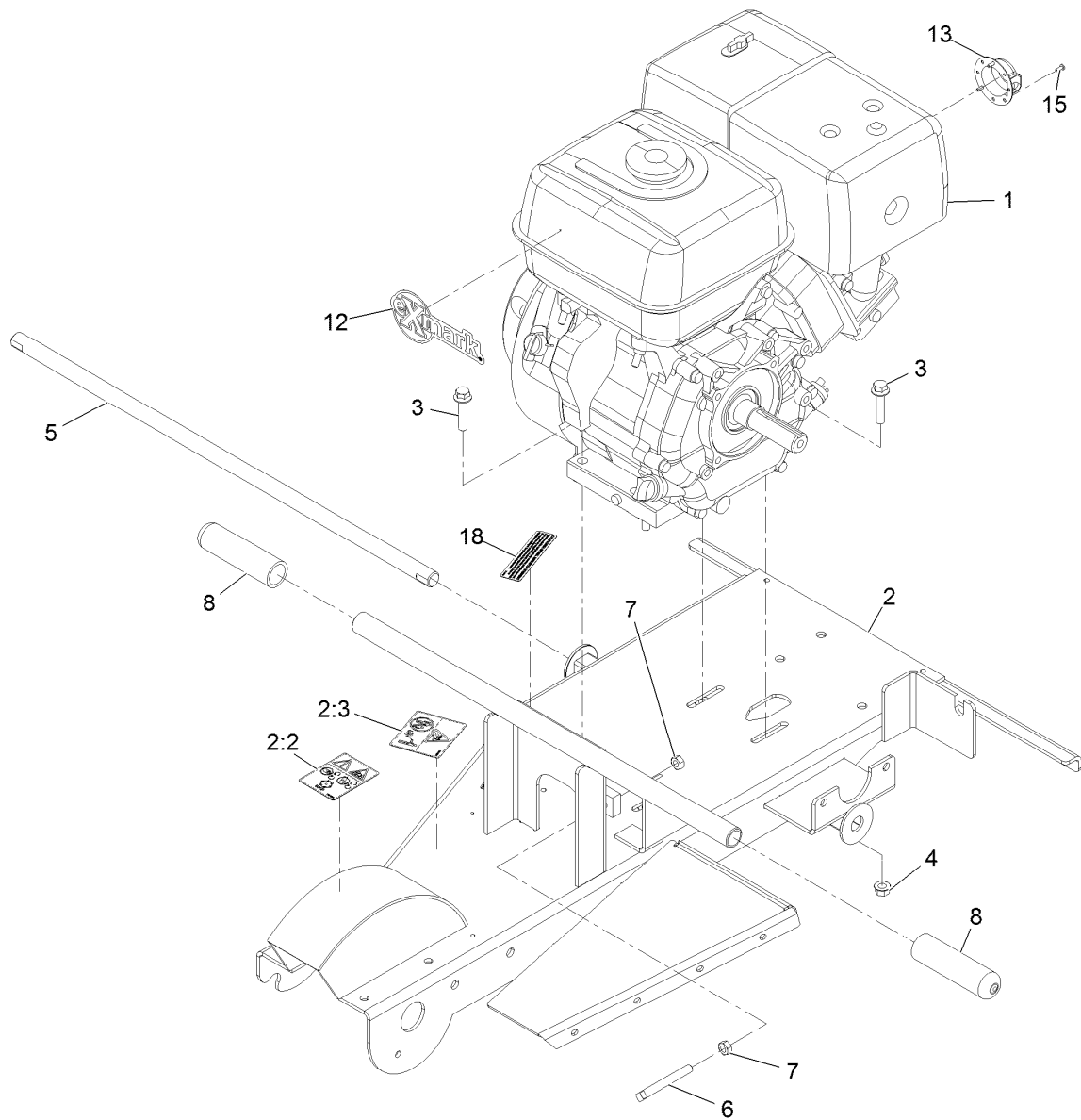
Exmark red touch up paint (spray paint – P/N 1-850337 - .6 oz liquid bottle – P/N 103-9140).



If your Exmark dealer does not have the Exmark part in stock, Exmark will get the parts to the dealer the next business day or the part will be FREE Guaranteed!! (Some restrictions apply. See your participating Exmark Dealer for details.)

Contents

Frame and Engine Assembly	4
Handle Assembly	5
Brake Lever Assembly No. 120-1797	6
Cutter Wheel Assembly	7
Wheel and Brake Assembly	8
Flap Assembly	9
Belt Drive Assembly	10

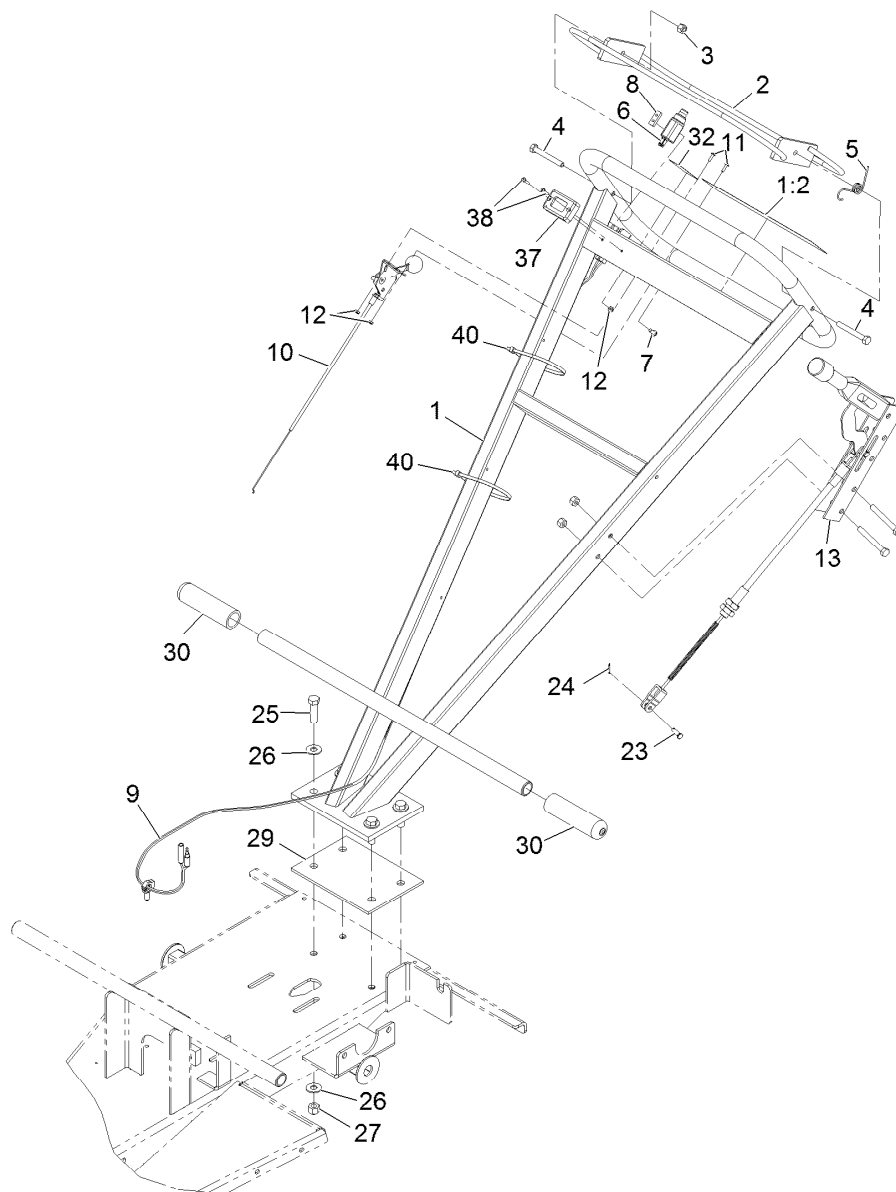


Frame and Engine Assembly

Ref.	Part Number	Qty.	Description
1		1	Engine-Honda, Gx390Ut2 Qxc9 ●■
2	121-4390	1	Frame ASM,
2:2	119-4690	1	Decal-Danger
2:3	119-4693	1	Decal-Caution
3	3234-19	4	Screw-HHF
4	32128-21	4	Nut-3/8-16 Flanged Side Lock
5	120-1252	1	Bar-Axle
6	119-4729	1	Screw-Set, SQH 3/8-16 X 3
7	3217-7	2	Nut-Hex 3/8-16
8	120-1333	2	Handle-Grip
12	103-2883	1	Decal,Exmark Logo
13	120-1886	1	Deflector-Exhaust
15	32144-74	3	Screw-TAP
18	117-2718	1	Decal-Arrester, Spark

● Not serviced separately

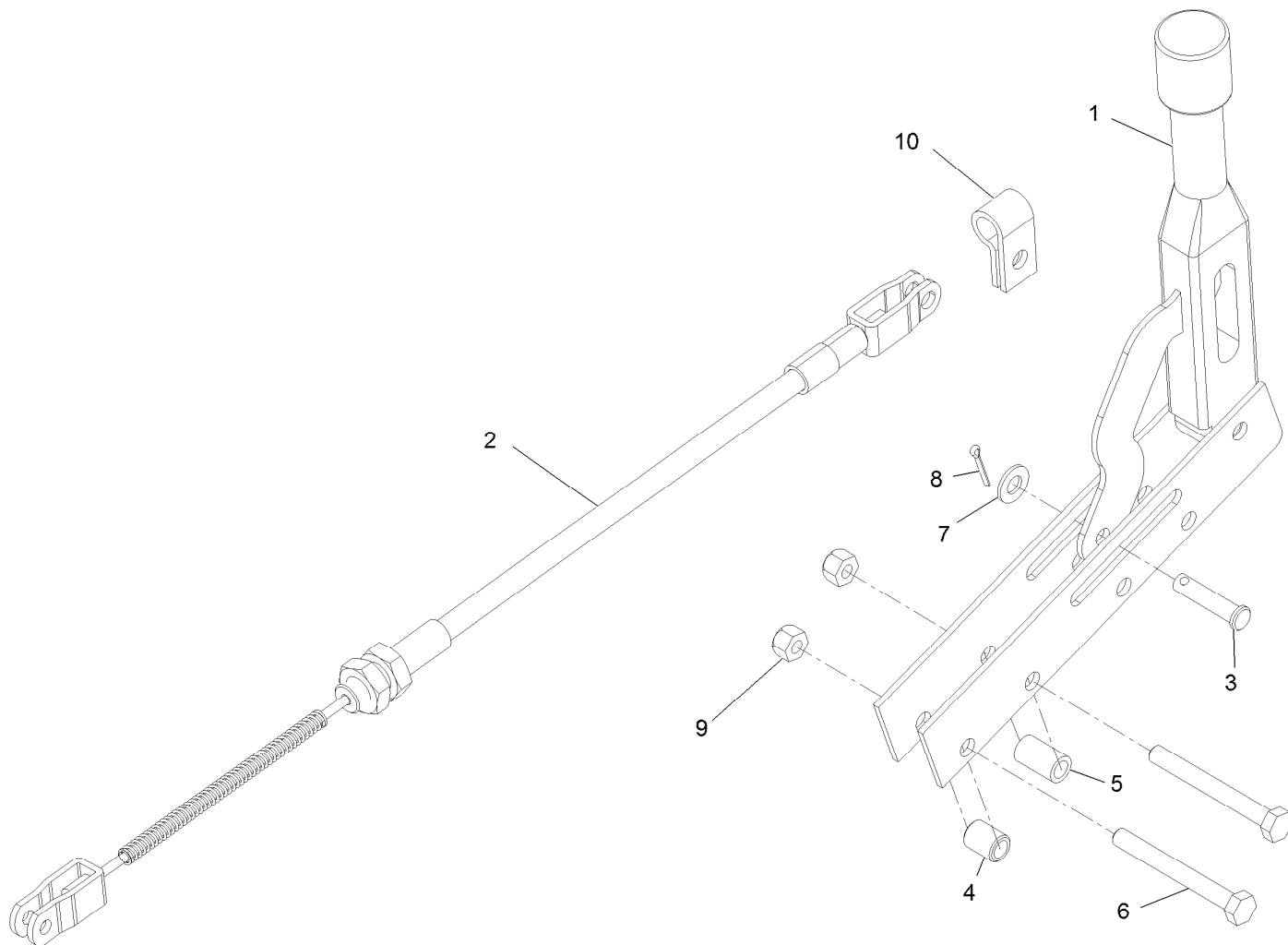
■ Obtain parts from www.honda-engines.com



Handle Assembly

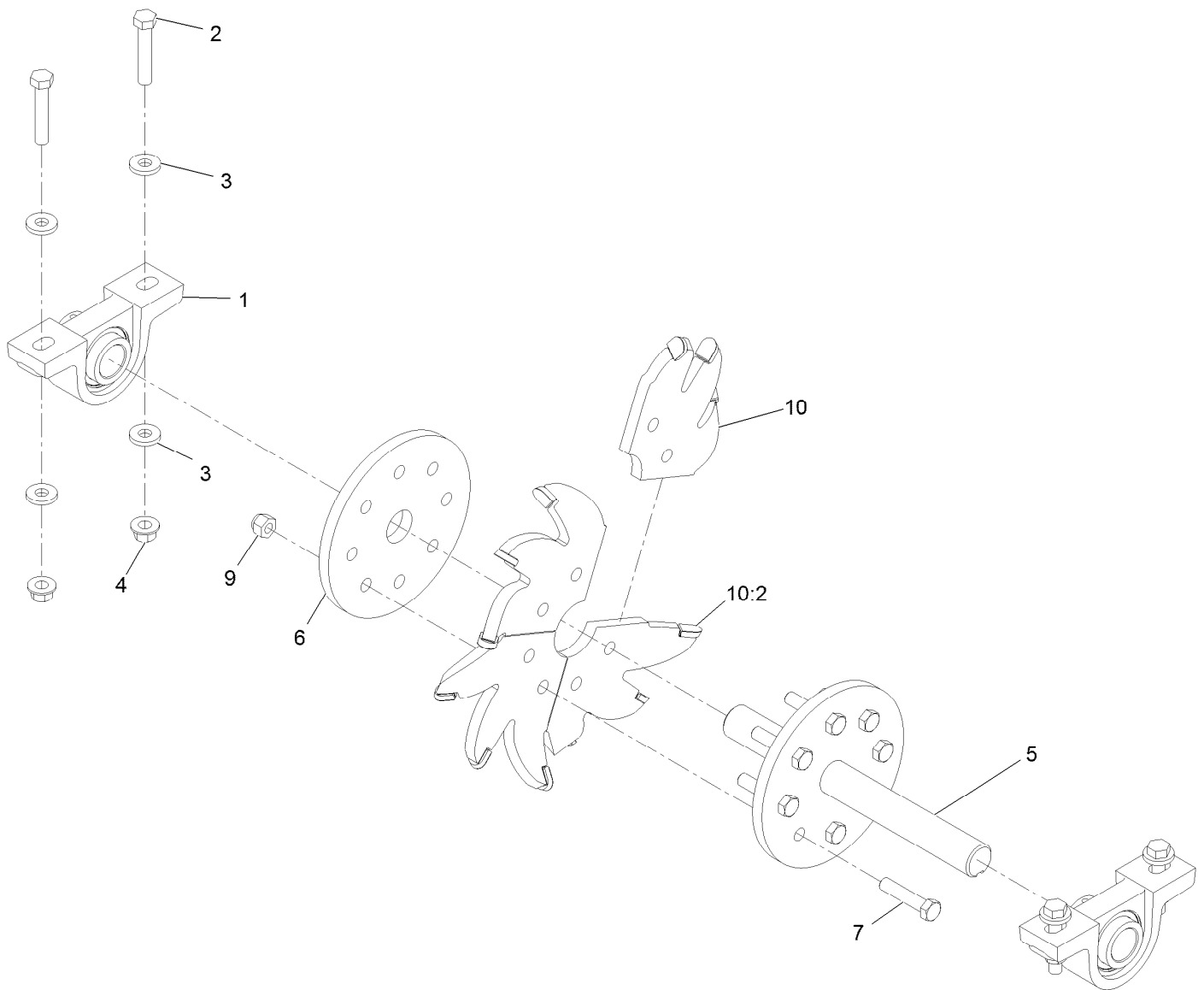
Ref.	Part Number	Qty.	Description
1	121-4391	1	Handle ASM
1:2	119-4701	1	Decal-Warning
2	119-4711-01	1	Safety Handle ASM
3	3296-29	2	Nut-Nyloc 5/16-18
4	322-12	2	Screw-HH 5/16-18 X 2 1/2
5	120-1291	1	Spring-Return
6	120-1803	1	Switch-Plunger, No (W/Cover)
7	1-803071	2	Screw-Machine #10-24 X 1/2
8	1-633181	1	Plate-Tapped
9	120-1823	1	Harness-Wire, 13Hp
10	120-1285	1	Cable-Throttle
11	3249-3	2	Screw-PRH

Ref.	Part Number	Qty.	Description
12	3296-9	2	Nut-Nyloc #6-32 Thin
13	120-1797	1	Lever-Brake Over Center ASM
23	1-808265	1	Pin-Clevis
24	3272-1	1	Pin-Cotter 1/16 X 1/2
25	324-6	4	Screw-HH 7/16-14 X 1 1/2
26	3256-4	8	Washer-3/8 Std
27	3296-48	4	Nut-Nyloc 7/16-14
29	120-1248	1	Gasket-Handle
30	120-1333	2	Handle-Grip
32	119-4721	1	Decal-Engage
37	120-1218	1	Hourmeter-Inductive
38	3250-39	2	Screw-PPH
40	3290-379	2	Tie-Cable



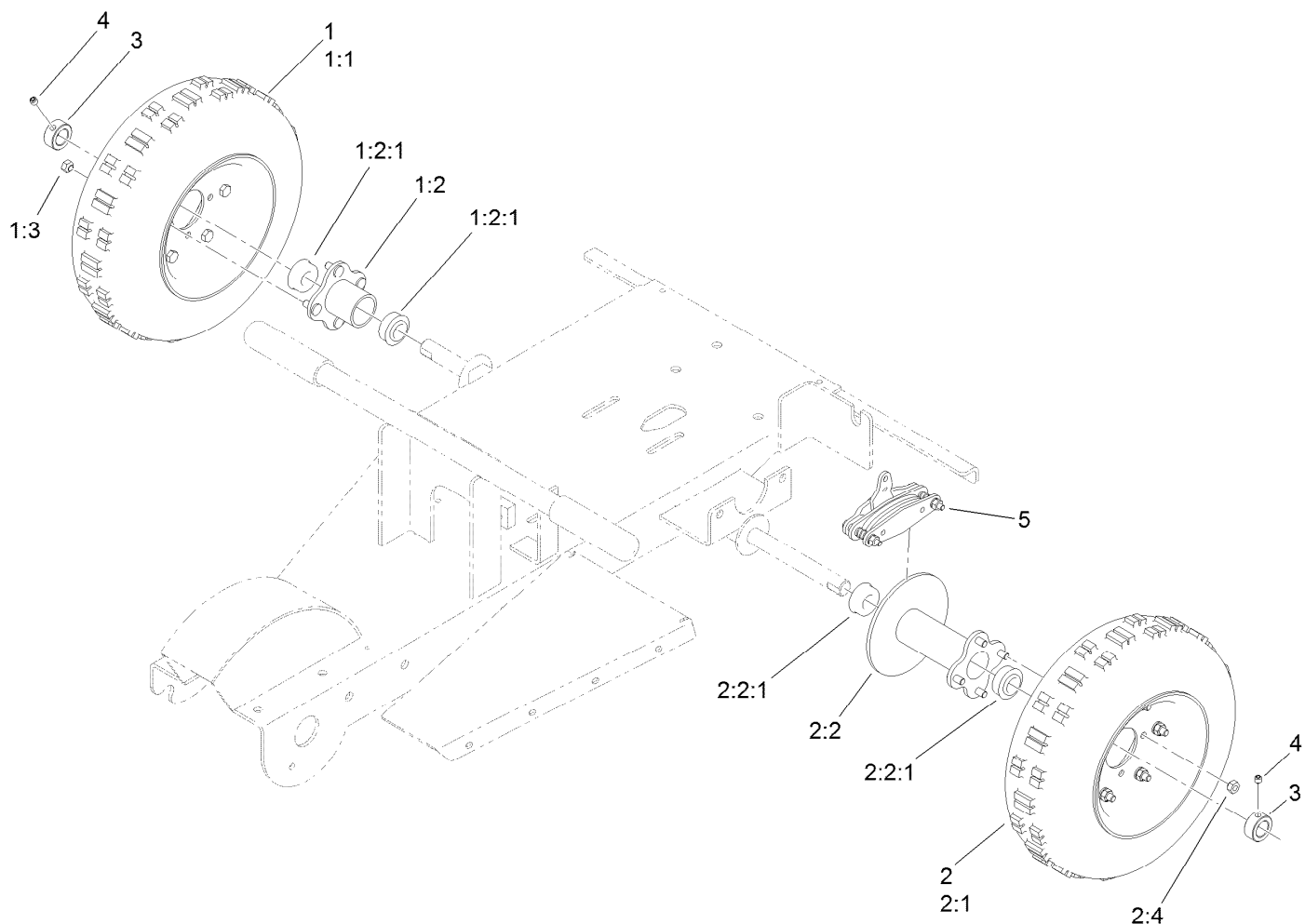
Brake Lever Assembly No. 120-1797

Ref.	Part Number	Qty.	Description
1	120-1219	1	Lever-Brake
2	120-1286	1	Cable-Brake
3	283-14	1	Pin-Clevis 5/16 X 1 3/8
4	88-7450	1	Spacer-Lever, Control
5	115-0826	1	Spacer-Idler
6	322-13	2	Screw-HH 5/16-18 X 2 3/4
7	3256-23	1	Washer-5/16 Sae
8	3272-6	1	Pin-Cotter
9	3296-29	2	Nut-Nyloc 5/16-18
10	120-1798	1	Clamp-Conduit



Cutter Wheel Assembly

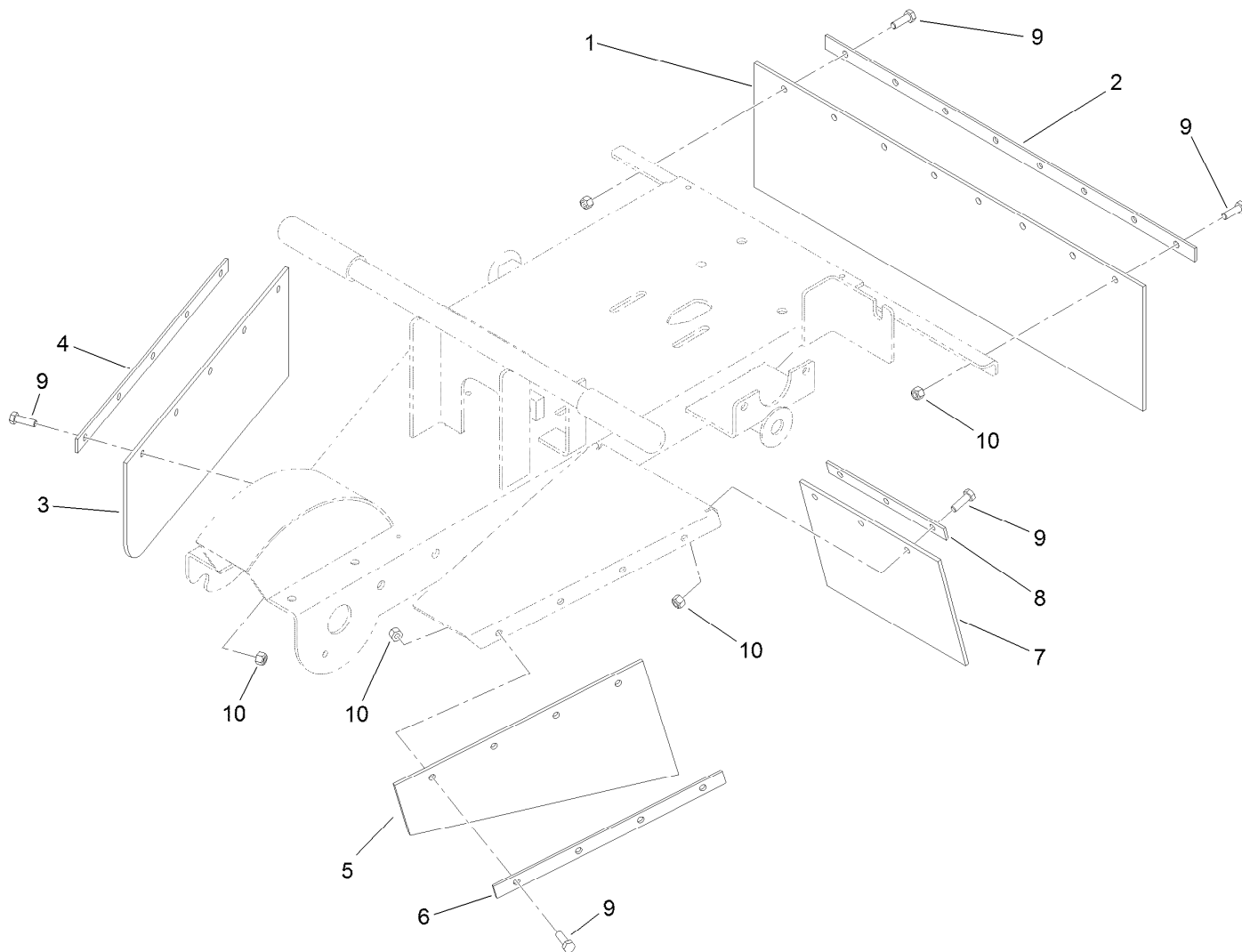
Ref.	Part Number	Qty.	Description
1	120-1211	2	Bearing ASM
2	3211-41	4	Screw-HH
3	71-9310	8	Spacer
4	54-9190	4	Nut-Hex 3/8-24 Lock
5	119-4708	1	Blade Shaft ASM
6	119-4710-03	1	Flange-Shaft
7	323-9	8	Screw-HH 3/8-16 X 1 3/4
9	3296-39	8	Nut-Nyloc 3/8-16
10	119-4702-03	4	Blade-Grinder
10:2	119-4705	3	Tip-Carbide



Wheel and Brake Assembly

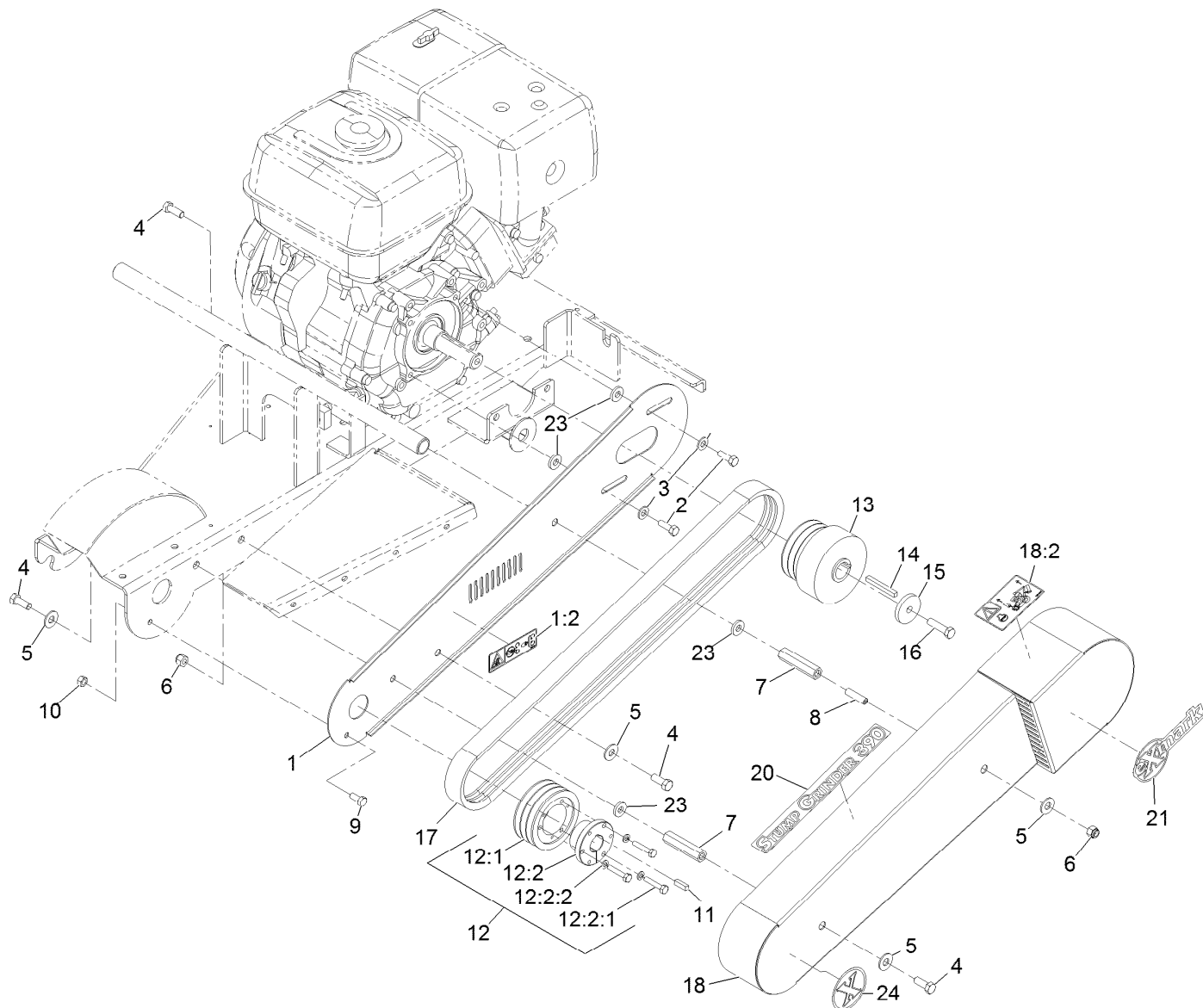
Ref.	Part Number	Qty.	Description
1	120-1216	1	Tire ASM (W/ Hub)
1:1	120-1287	1	Tire ASM
1:2	120-1295	1	Hub
1:2:1	120-1296	2	Bearing-Wheel
1:3	120-1304	4	Nut-Wheel
2	120-1214	1	Tire ASM (W/ Hub And Brake)
2:1	120-1287	1	Tire ASM
2:2	120-1297	1	Hub
2:2:1	120-1296	2	Bearing-Wheel
2:4	120-1304	4	Nut-Wheel
3	120-1294	2	Collar-Set
4	3246-2	2	Setscrew 5/16-18 X 5/16 ●
5	120-1773	1	Brake-Caliper

● Use Pro-Lock retaining type, Part no. 1-840023 (.5cc tube) on threads.



Flap Assembly

Ref.	Part Number	Qty.	Description
1	120-1236	1	Flap-Rear
2	120-1238-01	1	Plate-Mounting, Flap
3	120-1240	1	Flap-RH
4	120-1241-01	1	Bracket-Support, Flap (RH)
5	120-1242	1	Flap-LH
6	120-1243-01	1	Bracket-Support, Flap (LH)
7	120-1244	1	Flap-Small
8	120-1246-01	1	Bracket-Support, Flap
9	322-5	20	Screw-HH
10	3296-29	20	Nut-Lock, NI



Belt Drive Assembly

Ref.	Part Number	Qty.	Description	Ref.	Part Number	Qty.	Description
1	121-4413	1	Plate-Guard,	12:2	61-3340	1	Bushing
1:2	117-4979	1	Decal-Warning, Shields (Ce)	12:2:1	321-13	3	Screw-HH 1/4-20 X 1 3/8
2	3210-5	2	Screw-HH	12:2:2	3253-2	3	Washer-Lock
3	3256-38	2	Washer-Flat	13	120-1204	1	Clutch
4	323-6	4	Screw-HH 3/8-16 X 1	14	63-8150	1	Key-Machine 1/4 X 1/4 X 2.22
5	3256-4	4	Washer-3/8 Std	15	110-9981	1	Washer-Plain
6	3296-39	2	Nut-Nyloc 3/8-16	16	3211-6	1	Screw-HH 3/8-24 X 1 1/2 ●
7	120-1234	2	Spacer-Guard	17	120-1203	1	Belt-3V
8	3247-8	1	Screw-Set, HSH 3/8-16 X 1 1/2	18	121-4414	1	Belt Guard ASM,
9	322-3	1	Screw-HH 5/16-18 X 3/4	18:2	119-4692	1	Decal-Caution
10	3217-6	1	Nut-Hex 5/16-18	20	116-6958	1	Decal-Stump Grinder 390
11	10-7070	1	Key-Machine 1/4 X 1/4 X 7/8	21	103-2883	1	Decal,Exmark Logo
12	120-1298	1	Sheave ASM	23	43-0940	4	Spacer
12:1	95-0883	1	Pulley	24	116-6987	1	Decal-Exmark X-Logo 2.64

● Use Pro-Lock retaining type, Part no. 1-840023 (.5cc tube) on threads.

MAXIMIZE THE PERFORMANCE OF YOUR EXMARK.

4-CYCLE PREMIUM ENGINE OIL

Part No. 116-3373

Both SAE 30 and SAE 10W-30 in one bottle.

Contains increased levels of zinc and phosphorus for better lubricity.

No Viscosity Index Improvers that tend to shear down in high heat.

Synthetic formulation.

Gas & Diesel compatible.

Anti-corrosion additives.

API 'SL' and JASO rated with wet clutch compatibility for other machines.

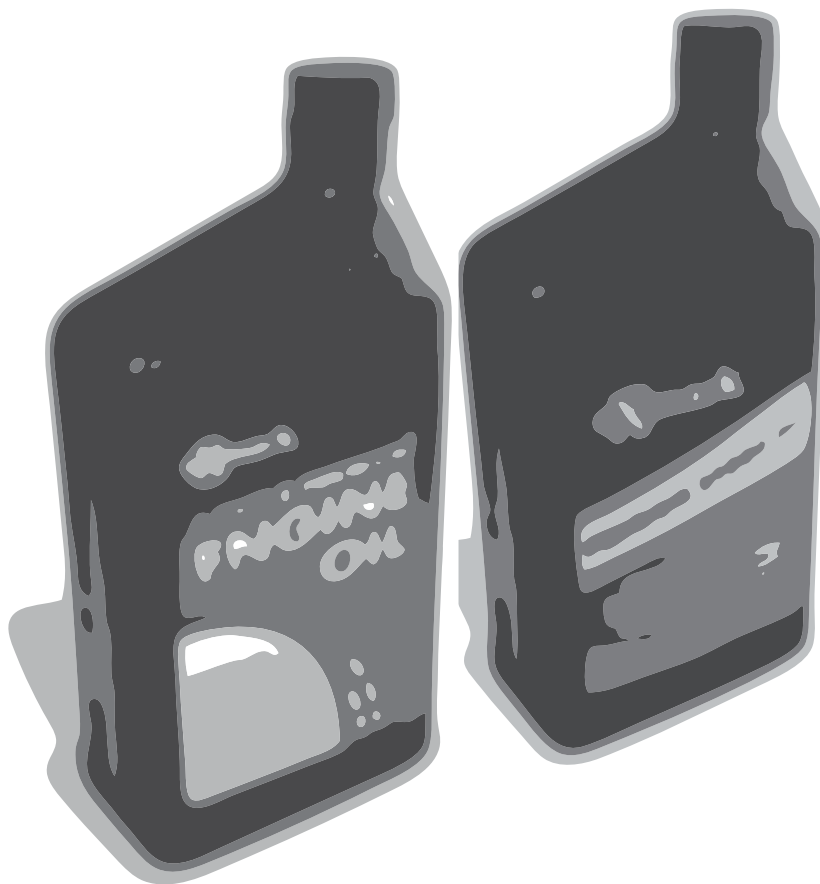
PREMIUM HYDRO OIL

Part No. 109-9828

Commercial quality for tough, high-heat conditions.

Designed specifically for zero-turn mower hydraulic systems.

Superior shear resistance under heavy loads.



Available from your local Exmark dealer. Find your closest dealer at exmark.com

EXMARK ACCESSORIES AND OPTIONS*

MID-MOUNT RIDING ACCESSORIES AND OPTIONS

CUSTOM RIDE SEAT SUSPENSION SYSTEM	OPERATOR CONTROLLED DISCHARGE
FULL SUSPENSION SEAT	SUN SHADE
DECK LIFT ASSIST KIT	TRASH CONTAINER
HITCH KIT	TURF STRIPER
LIGHT KIT	ULTRA VAC COLLECTION SYSTEM
12V POWER PORT	ULTRA VAC QUICK DISPOSAL SYSTEM
MICRO-MULCH SYSTEM	

OUT-FRONT RIDING ACCESSORIES AND OPTIONS

CUSTOM RIDE SEAT SUSPENSION SYSTEM	SNOW BLADE
DUAL-TAIL WHEEL	SNOWBLOWER
FLOOR PAN EXTENDER	SUN SHADE
HITCH KIT	TRASH CONTAINER
LIGHT KIT	ULTRA VAC COLLECTION SYSTEM
MICRO-MULCH SYSTEM	ULTRA VAC QUICK DISPOSAL SYSTEM
ROLL OVER PROTECTION SYSTEM (ROPS)	WEATHER CAB

WALK-BEHIND ACCESSORIES AND OPTIONS

GRASS CATCHER	TURF STRIPER
MICRO-MULCH SYSTEM	STANDON

*Some accessories and options not available for some models.

Place Model No. and Serial No.
Label Here (Included in the Literature
Pack) or Fill in Below

Model No. _____

Serial No. _____

Date Purchased _____

Engine Model No. and Spec. No. _____

Engine Serial No. (E/No) _____

© 2012 Exmark Mfg. Co., Inc.
Industrial Park Box 808
Beatrice, NE 68310
All Rights Reserved

Part No. 4501-169 Rev. A
(402) 223-6300
Fax (402) 223-5489
Printed in the USA.

