



Count on it.

Parts Catalog

Hydraulic Power Pack

ProPass 200 Top Dresser

Model No. 44713—Serial No. 312000001 and Up

Ordering Replacement Parts

To order replacement parts, please supply the part number, the quantity, and the description of each part desired.

Understanding Reference Numbers

Each identified part in an illustration has a reference number. The reference number for a part also appears in the parts list, along with other information about the part.

This catalog uses two special reference number formats, one to indicate parts in a service assembly and another to indicate the quantity of a given part in an illustration.

Service Assembly Reference Numbers

Parts in service assemblies have reference numbers in the form a:b. The a represents the reference number of the entire service assembly and the b represents a sequential number unique to each part within the service assembly.

For example, a wheel assembly might be identified by reference number 6, the tire by 6:1, the valve by 6:2, and the wheel by 6:3. When you order the assembly identified by reference number 6, you receive all parts identified by reference numbers 6:1, 6:2, and 6:3. However, you may also order any part individually. Reference numbers of this type appear in illustration and in parts lists.

Reference Numbers Indicating Quantity

In an illustration, if a reference number indicates more than one part, the reference number has the form nX y. The n represents the quantity of the part, the X is the multiplication symbol, and the y represents the reference number.

For example, in an illustration, the reference number 2X 37 means that two of the parts identified by reference number 37 are indicated.

List of Abbreviations

AR: as required

ASM: assembly

BBC: blade brake control

BHTF: button head thread forming

CARR: carriage

CCW: counter clockwise

CW: clockwise

DEG: degrees

DPA: Dual Point Adjustment

ECM: electronic control module

EXT: external

FH: flat head

GA: gauge

HD: heavy-duty

HF: hex flange

HH: hex head

HHF: hex head flange

HHFTF: hex head flange thread forming

HJ: hex jam

HLH: hex lag head

HOC: height-of-cut

HSBH: hex socket button head

HSFH: hex socket flat head

HSH: hex socket head

HWH: hex washer head

HWHTF: hex washer head thread forming

HYD: hydraulic

LH: left hand

LP: Liquid Propane

NI: nylon insert

NPTF: national pipe thread fine

PFH: phillips flat head

PPH: phillips pan head

PPHTF: phillips pan head thread forming

PRH: phillips round head

PTH: phillips truss head

PTO: power-take-off

RH: right hand

ROPS: roll-over protection system

RRB: rear roller brush

SFH: slotted fillister head

SHH: slotted hex head

SHWH: slotted hex washer head

SPH: slotted pan head

SQH: square head

SRH: slotted round head

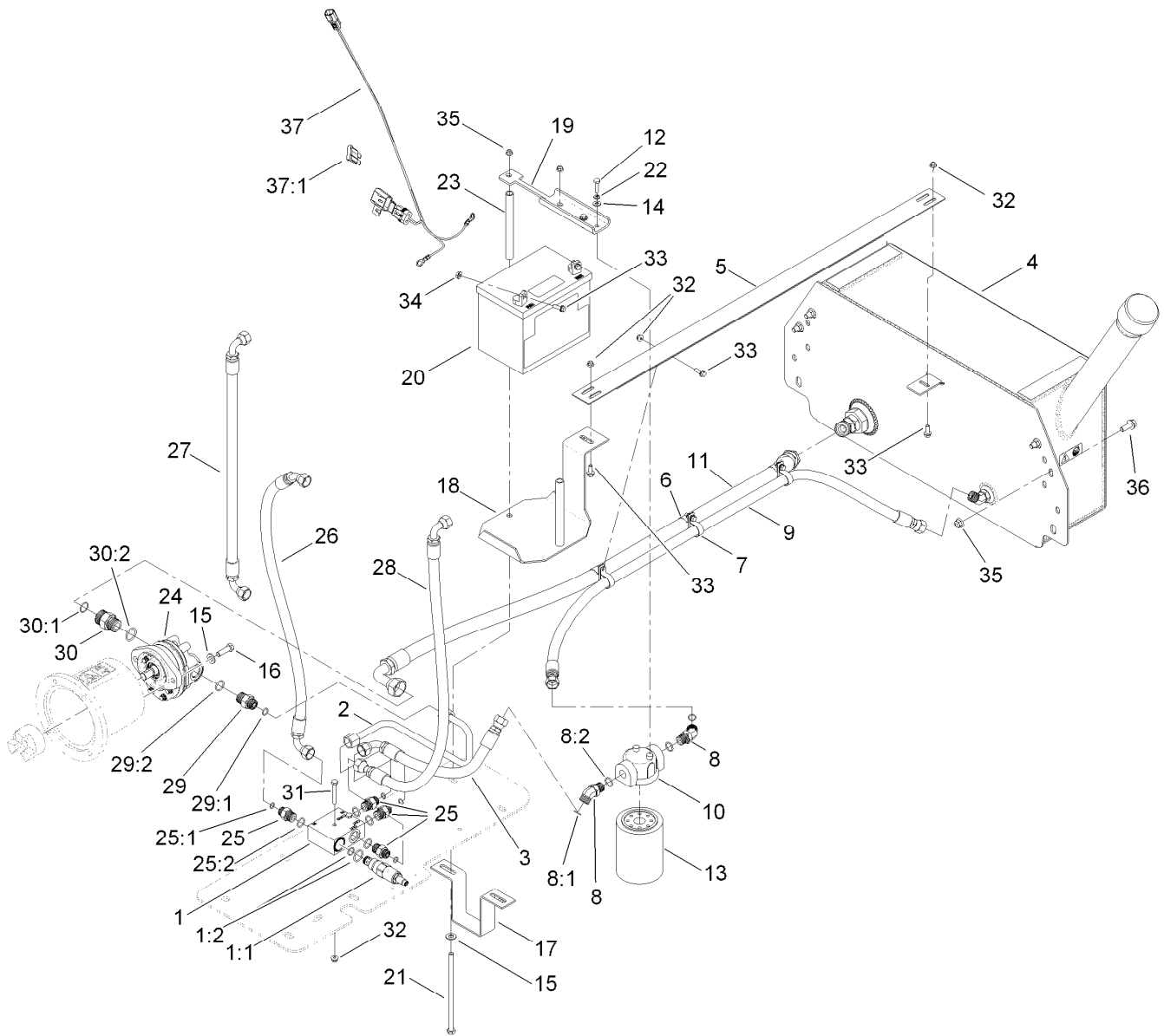
STD: standard

TAP: self tapping

TTH: torx truss head

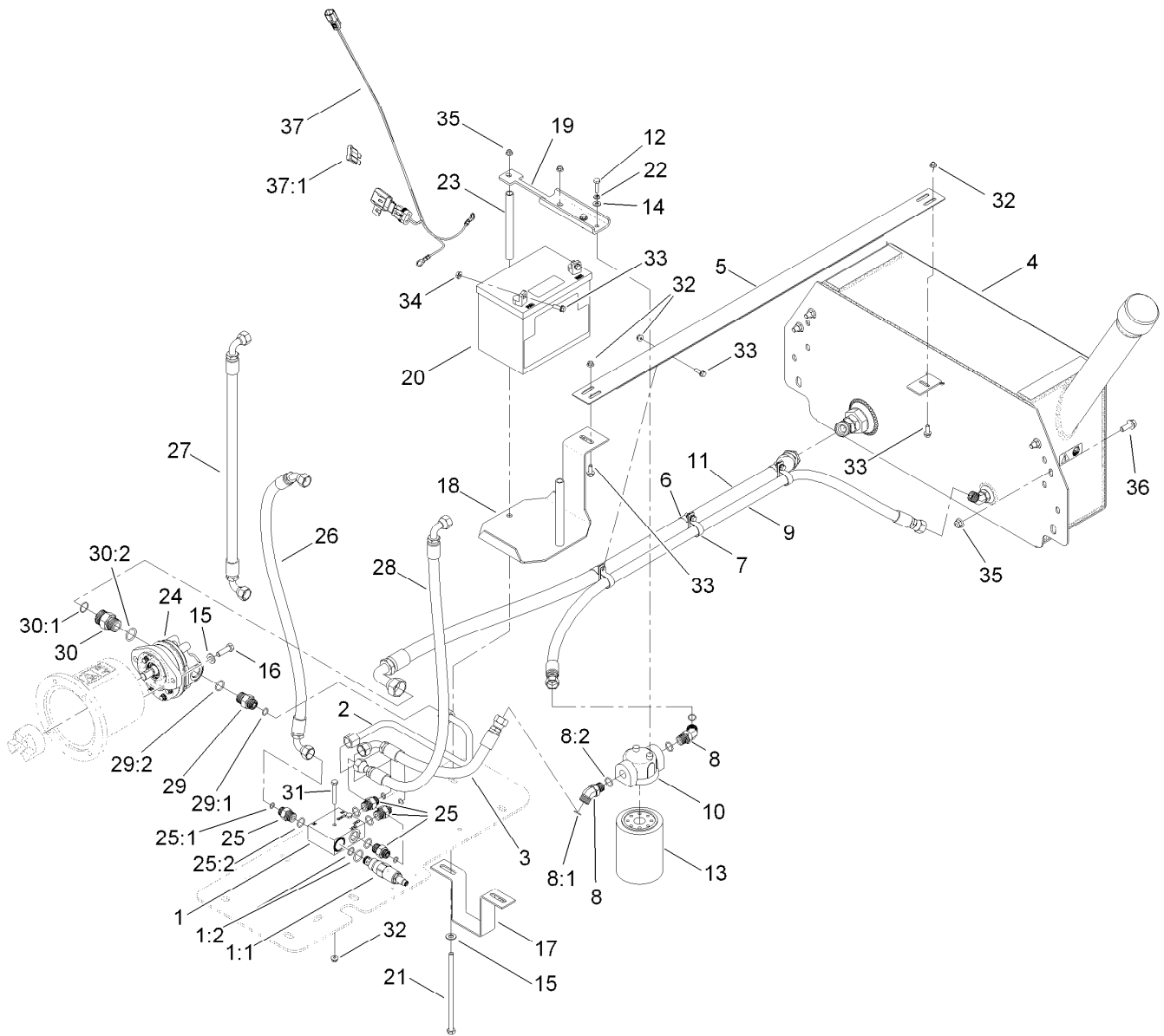
Contents

Hydraulic Power Pack Assembly	4
Hydraulic Tank Assembly No. 119-6913.....	6
Engine and Mounting Assembly.....	7



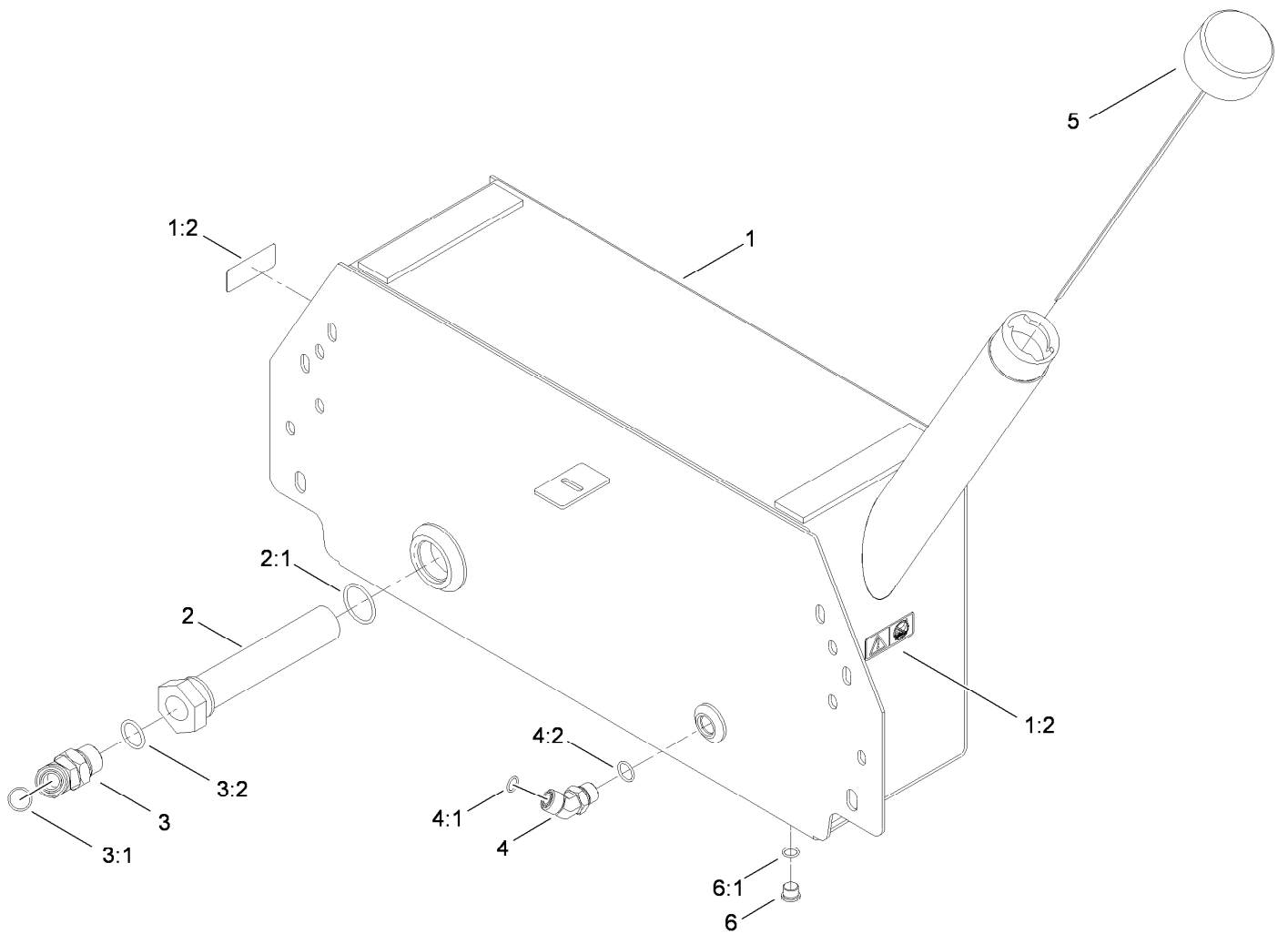
Hydraulic Power Pack Assembly

Ref.	Part Number	Qty.	Description	Ref.	Part Number	Qty.	Description
1	120-0839	1	Valve-Hydraulic, Relief	18	T0000-7684-01	1	Tray-Battery
1:1	120-0840	1	Valve-Cartridge	19	T0000-7677-01	1	Bracket-Battery / Filter
1:2	105-9159	1	Seal Kit	20	104-8162	1	Battery
2	119-6916	1	Tube-HYD	21	323-30	2	Screw-HH
3	107-1136	1	Hose ASM	22	3253-3	2	Washer-Lock
4	119-6913	1	HYD Tank ASM	23	T0000-3220	2	Tube-Bolt
5	T0000-7678-01	1	Bracket-Hose	24	T56031070	1	Pump
6	2412-104	3	Clamp-R	25	340-4	4	Fitting-HYD, Straight
7	2412-106	3	Clamp-R	25:1	237-30	1	O-Ring
8	340-101	2	Fitting-HYD, 45 DEG	25:2	237-79	1	O-Ring
8:1	237-30	1	O-Ring	26	119-6928	1	Hose-Hydraulic
8:2	237-79	1	O-Ring	27	119-6929	1	Hose-Hydraulic
9	119-6918	1	Hose-Hydraulic	28	95-3738	1	HYD Hose ASM
10	87-8780	1	Head-Filter	29	340-6	1	Fitting-HYD, Straight
11	119-6917	1	Hose-Hydraulic	29:1	237-30	1	O-Ring
12	321-6	2	Screw-HH	29:2	237-80	1	O-Ring
13	54-0110	1	Filter-Oil, Transmission	30	340-9	1	Fitting-HYD, Straight
14	3256-22	2	Washer-Flat	30:1	237-58	1	O-Ring
15	3256-24	4	Washer-Flat	30:2	237-81	1	O-Ring
16	323-7	2	Screw-HH	31	321-11	2	Screw-HH
17	T0000-7679-01	1	Strap-Mounting	32	104-7201	9	Nut-HF



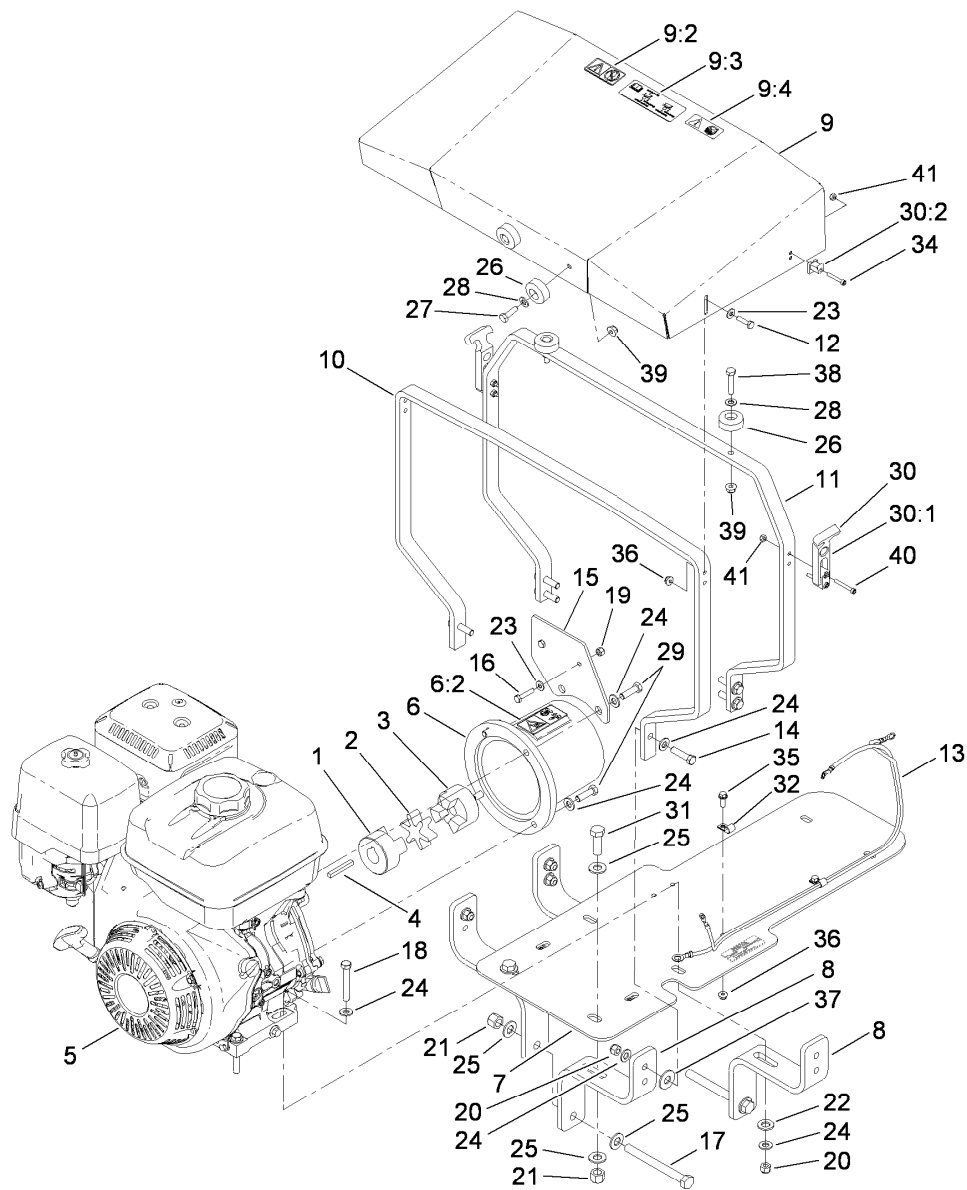
Hydraulic Power Pack Assembly (continued)

<i>Ref.</i>	<i>Part Number</i>	<i>Qty.</i>	<i>Description</i>	<i>Ref.</i>	<i>Part Number</i>	<i>Qty.</i>	<i>Description</i>
33	115-5103	9	Screw-HHF	36	3234-42	4	Screw-HHF
34	32128-14	2	Nut-HF	37	120-0877	1	Harness-Wire, Power Pack
35	104-8301	6	Nut-Flange, NI	37:1	109355	1	Fuse-Blade, 15 Amp



Hydraulic Tank Assembly No. 119-6913

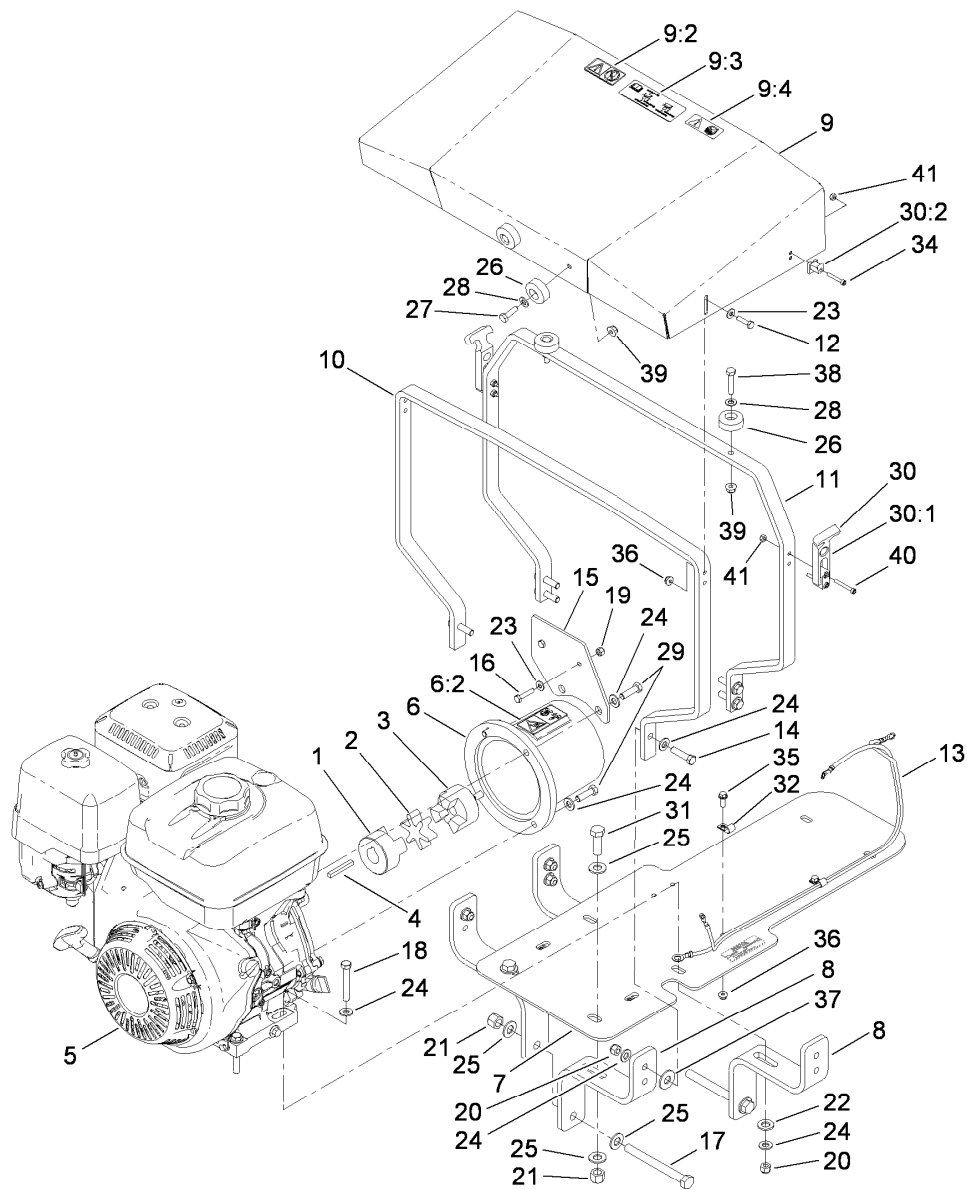
Ref.	Part Number	Qty.	Description
1	120-0833	1	HYD Tank Decal ASM
1:2	115-2047	2	Decal-Surface, Hot
2	87-3990	1	Strainer-Transaxle
2:1	237-123	1	O-Ring
3	100-5530	1	Fitting-HYD, 45 DEG
3:1	237-58	1	O-Ring
3:2	237-81	1	O-Ring
4	340-101	1	Fitting-HYD, 45 DEG
4:1	237-30	1	O-Ring
4:2	237-79	1	O-Ring
5	T0000-4560	1	Dipstick Filler Cap ASM
6	353-989	1	Plug-Hex, Hollow
6:1	237-42	1	O-Ring



Engine and Mounting Assembly

Ref.	Part Number	Qty.	Description	Ref.	Part Number	Qty.	Description
1	T59013015	1	Coupling-Jaw	14	323-8	6	Screw-HH
2	T59013022	1	Spider-Coupling	15	T36057020-01	1	Bracket-Generator, Engine
3	T59013005	1	Coupling-Jaw	16	321-8	2	Screw-HH
4	T01-29633B	1	Stock-Key	17	325-19	2	Screw-HH
5	120-9400	1	Engine-Honda ●	18	323-12	4	Screw-HH
6	T0000-7665	1	Flange Adaptor Decal ASM	19	3296-42	2	Nut-Lock, NI
6:2	119-6844	1	Decal-Warning, Shear	20	3296-39	10	Nut-Lock, NI
7	T0000-1349-01	1	Plate-Mount, Engine	21	3296-23	4	Nut-Lock, NI
8	T0000-7680-01	4	Bracket-Mount, Engine	22	106-9888	4	Washer-Flat
9	T36057010	1	Engine Cover ASM W/Decals	23	3256-22	4	Washer-Flat
9:2	119-6807	1	Decal-Warning, Do Not Step	24	3256-24	24	Washer-Flat
9:3	119-6829	1	Decal-Weight	25	3256-26	8	Washer-Flat
9:4	115-2047	1	Decal-Surface, Hot	26	T0000-2430	4	Bumper-Rubber
10	T36057015-01	1	Strut-Cover, Engine	27	322-5	2	Screw-HH
11	T0000-7685-01	1	Stop-Cover, Engine	28	3256-23	4	Washer-Flat
12	321-6	2	Screw-HH	29	323-7	4	Screw-HH
13	119-6899	1	Harness-Wire, Engine	30	104-0010	2	Latch-Draw, Flexible
				30:1	104-0011	1	Handle-Latch

● Obtain parts from www.honda-engines.com



Engine and Mounting Assembly (continued)

<i>Ref.</i>	<i>Part Number</i>	<i>Qty.</i>	<i>Description</i>	<i>Ref.</i>	<i>Part Number</i>	<i>Qty.</i>	<i>Description</i>
30:2	104-0012	1	Keeper-Latch	37	T0000-2623	2	Washer-Poly, Ultra High Molecular Weight
31	325-6	2	Screw-HH	38	322-7	2	Screw-HH
32	2412-89	2	Clamp-R	39	104-8300	4	Nut-Flange, NI
34	3274-13	2	Screw-HSH	40	3274-59	4	Screw-HSH
35	115-5103	2	Screw-HHF	41	3296-2	6	Nut-Lock, NI
36	104-7201	4	Nut-HF				

● Obtain parts from www.honda-engines.com

Notes:

Notes:

Notes:



Count on it.