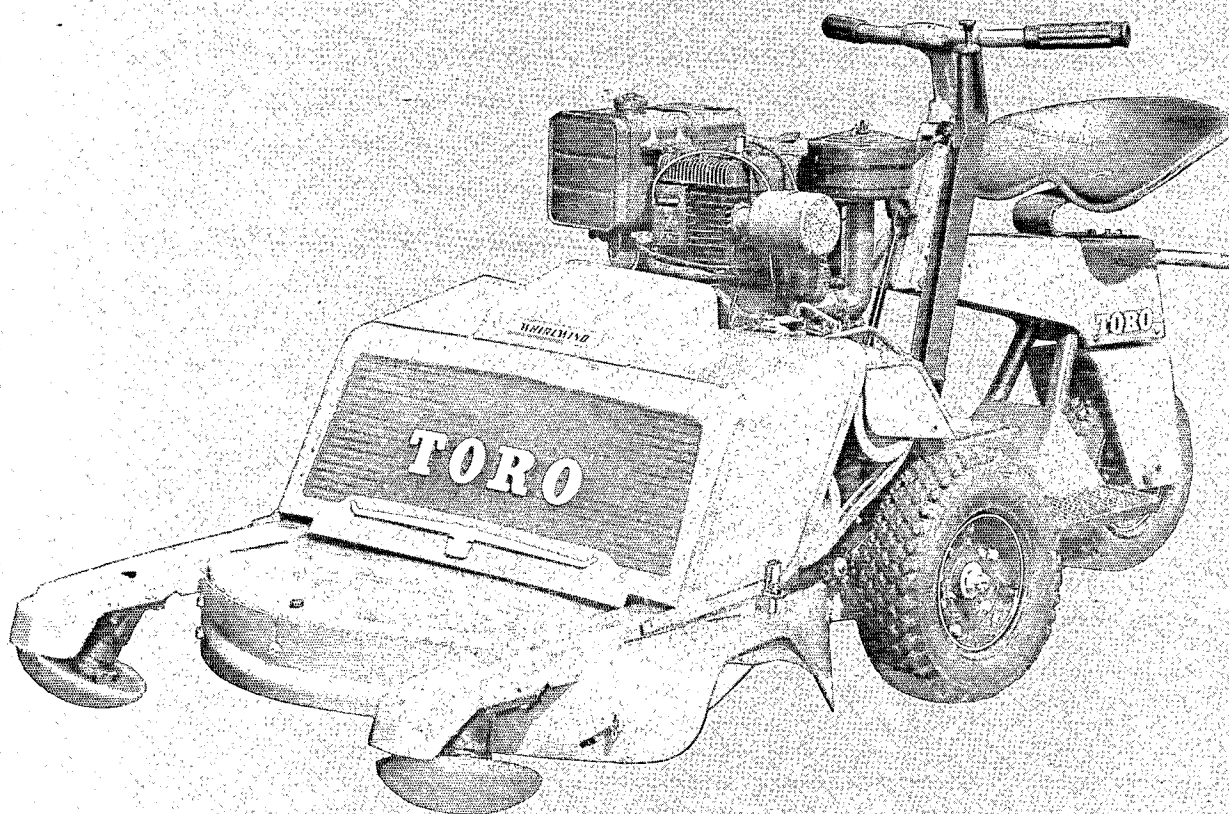


OWNER'S OPERATING AND PARTS MANUAL



32" WHIRLWIND S.P.

ROPE STARTER, LOCKING DIFFERENTIAL, LESS FRONT WHEELS - MODEL NO. 26123

ROPE STARTER, REGULAR, LESS FRONT WHEELS - MODEL NO. 26133

BOOK NO. 251

Price 25 cents

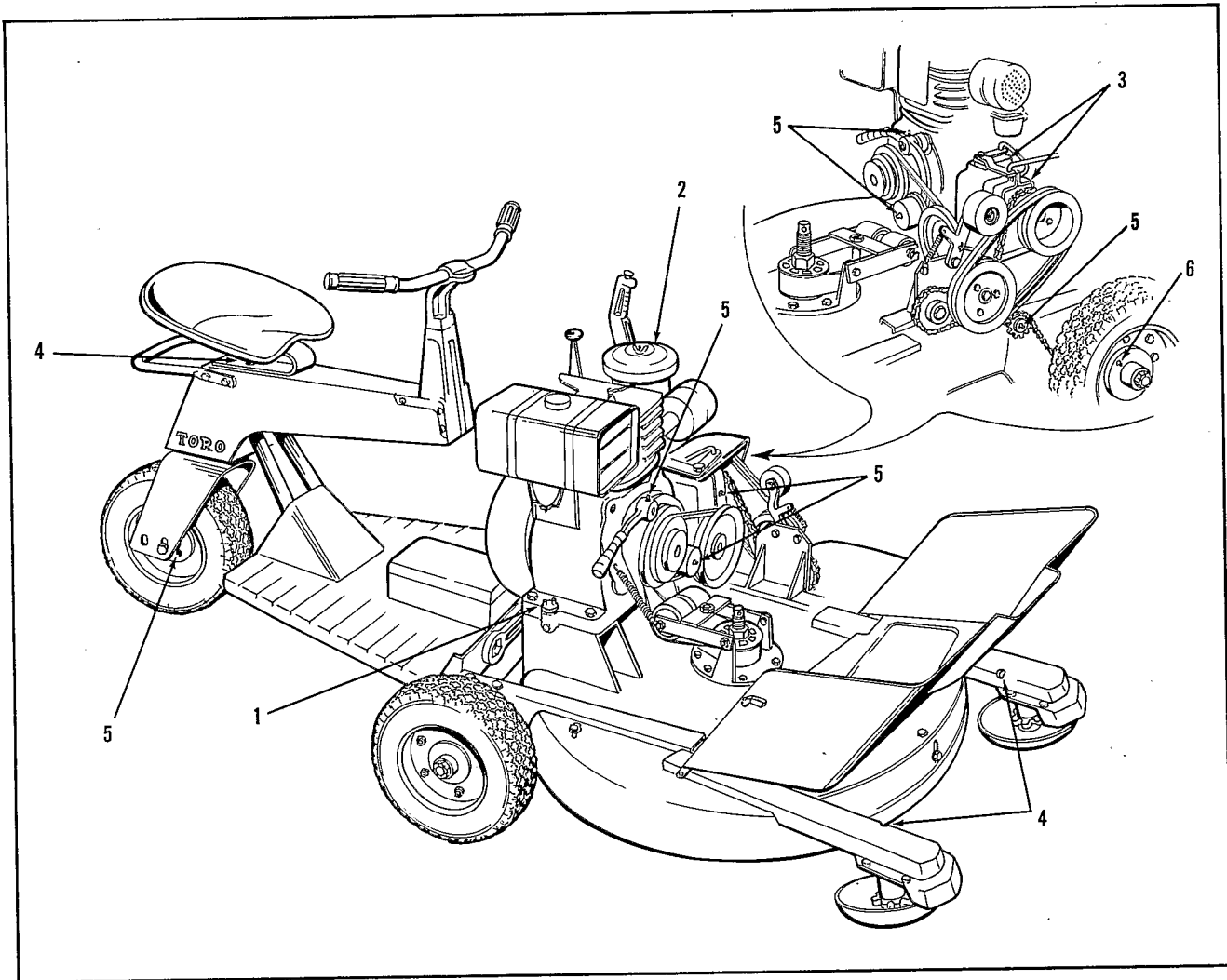
1950

To The TORO Owner

This Owner Manual has been especially prepared for your information and guidance in the operation and care of your new Toro 32-inch Whirlwind S. P.

Properly adjusted, operated and maintained, this Toro Whirlwind will respond quickly and easily to every reasonable demand and give years of reliable service.

The Toro Whirlwind is manufactured by an organization of mowing machinery specialists for over 40 years. Each unit is carefully inspected and tested before leaving the factory. For best performance, study this manual for regular maintenance procedures.



LUBRICATION

1. **ENGINE:** Use a good grade of S.A.E. #20 motor oil; check oil level after every four hours of running. If oil is below filler opening, fill to proper level. See engine manual for further instructions.
 2. **AIR CLEANER:** Fill to level marked on outside of air cleaner casing. Use a good grade of S.A.E. #20 motor oil; change oil after each 25 operating hours, more often under dusty conditions.
 3. **SPEED REDUCER:** Use a good grade of S.A.E. #140 gear oil. Check oil level at least twice each season; this is done by removing small plug on bearing cap. If oil flows out, no more is needed. If no oil flows, remove filler plug on top of reducer housing and add oil to bring up to proper level. To drain, remove top plug and drain plug (not oil level plug).
 4. **OIL CUPS:** Use a good grade of lubricating oil, a few drops in oil cups each time mower is used.
 5. **ZERK FITTINGS:** Use a good grade of gun grease after every 48 operating hours. **CAUTION:** Do not overgrease. Two or three shots from gun is ample.
 6. **DIFFERENTIAL:** Use a good grade of semi-fluid grease or a #1 chassis grease. Check at least twice each season. This is done by removing cotter key and axle nut, then pull off left rear wheel hub for inspection. If grease is low, refill with two or three shots from grease gun.
- PIVOT POINTS AND CONTROL CASING:** Oil daily with lubricating oil.

SPECIFICATIONS

ENGINE: Briggs & Stratton 23AB - rope start

FUEL TANK CAPACITY: 8 quarts

CUTTER BAR CLUTCH: Tight-slack flat belt

TRACTION CLUTCH: Rockford disc type on speed reducer output shaft.

CUTTER BAR DRIVE: 1-3/4" wide flat belt on 3-3/8" O.D. and 4-1/4" O.D. pulleys.

REDUCTION: Engine to cutter bar: 1.26:1

CUTTER BAR: 3/8" thick arm with hardened blades riveted to ends; 32" long assembled.

TRACTION DRIVE: "A" section V-belt on 2.8 P.D., 3.7 P.D. or 4.9 P.D. engine pulley to 6.3 P.D., 5.3 P.D. or 4.3 P.D. pulley on speed reducer. 5/8 pitch x 3/8 wide roller chain on 27T and 48T sprockets from speed reducer to differential.

REDUCTION, Engine to Wheels: 61.3, 39.0 or 23.9 depending on pulley groove selected, including 15.34:1 reduction in speed reducer.

WHEELS:

Rear - Steel disc #14 ga. with cast iron hubs.

Front - Rotating mall. cast iron skids, ball bearing mounted and spring loaded or 5" diameter ball bearing swivel caster.

TIRES: Rear - 4.00 x 14 Pneumatic

DIFFERENTIAL: Enclosed and sealed bevel gears.

GROUND SPEED:

Forward - 2.3, 3.7 or 6.0 mph depending on pulley groove selected.

Reverse - 1.4, 2.2 or 3.6 mph depending on pulley groove selected.

HEIGHT OF CUT: Standard 1" to 4" adjusted by screw threads and locknut on cutter bar shaft. See pages 4, 16 and 17 for additional heights of cut.

WIDTH OF CUT: 32"

HOUSING: #9 ga. stamped steel with welded brackets and deflector. Front left hand discharge with adjustable combination deflector and adjustable front guard.

SULKY: Steerable single rear wheel. Wheel controlled by 5/32" dia. cable from handle bar column.

SULKY WHEEL: Steel discs with cast iron hub and roller bearings.

SULKY TIRE: 4.00 x 7 Pneumatic

DIMENSIONS:

Width	39-5/16" w/sulky
Length	89-1/8"
Height	36-3/4"

WEIGHT: 590 lbs. with sulky

REVERSE UNIT: 2 tight-slack "B" section V-belts on 5.2 P.D. and 5.2 P.D. pulleys from speed reducer to countershaft. 5/8 pitch x 3/8 wide roller chain on 16T and 48T sprockets from countershaft to differential.

OPTIONAL EQUIPMENT:

- 12 V Electric Starter-Generator.
- Pedal-operated Differential Lock.
- Units shipped less front wheels. Distributor mounts rotating cast malleable iron skids; ball bearing mounted or springloaded - or -
- 5-inch diameter ball bearing swivel caster wheels as customer option.
- Leaf Mulcher.

Warranty

The Manufacturer warrants each new piece of equipment sold to be free of defects in material and workmanship. For ninety (90) days from the purchase date, Toro Manufacturing Corporation will furnish for the original purchaser, through any Authorized Service Dealer, any part or parts found at our factory in Minneapolis, Minn., to be defective under normal use and service.

This Warranty does not obligate the Manufacturer to bear the cost of transportation charges in connection with the replacement or repair of

defective parts -- nor shall it apply to a machine upon which repairs or alterations have been made, unless authorized by the manufacturer.

This Warranty does not include nor cover standard accessories produced by other manufacturers. Such accessories have separate warranties by their respective manufacturers. and repair or exchange will be made on the basis of such warranties, and the policies authorized by them shall be adhered to.

This warranty is in lieu of all other warranties expressed or implied.

IMPORTANT ORDERING INSTRUCTIONS

Repair parts are available from your TORO distributor or service dealer.

To insure getting correct parts without delay, please furnish the following information:

1. Serial number of your mower as shown on the name plate.
2. Part number, description and quantity of each part required.

3. State whether parts should be shipped by mail or express. All repair parts are shipped f.o.b. factory.
4. Name and address where parts are to be shipped.
5. Do not order by reference number; use part number only.

OPERATING INSTRUCTIONS

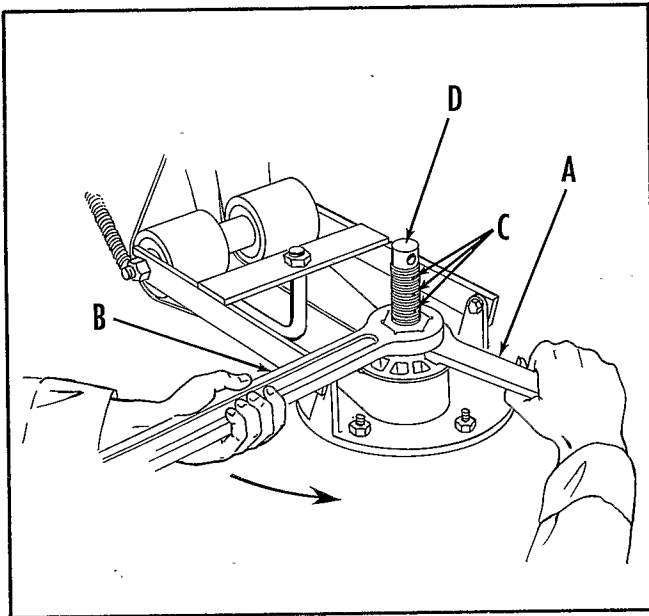


FIG. A. - HEIGHT OF CUT ADJUSTMENT

To change height of cut, insert spanner wrench "A" in position on cutter shaft pulley. Then place wrench "B" on large nut and turn in direction as shown. After nut is loose, threaded shaft "D" can be turned down for low cut or up for high cut as desired. Holes "C" in shaft are spaced in 1/2" increments. No adjustments are necessary under housing.

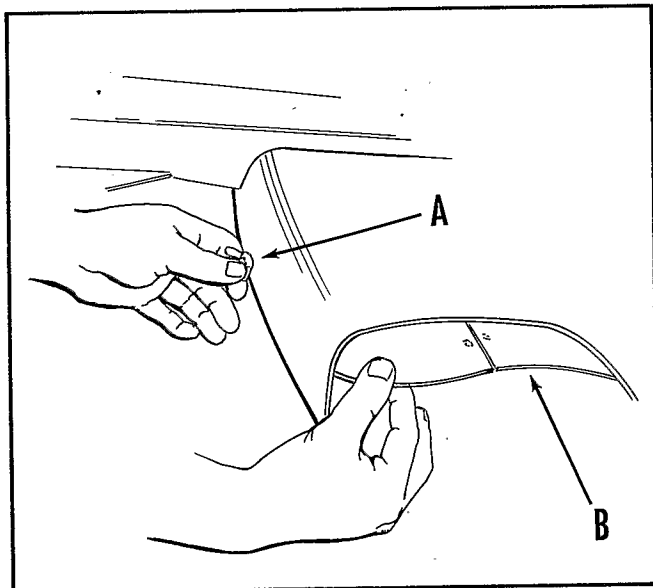


FIG. B. - GRASS DEFLECTOR ADJUSTMENT

Side discharge chute as shown in above illustration reduces clogging or clumping of grass clippings and tends to deflect debris downward.

To adjust deflector, no attachments are needed. Simply loosen wing nut "A", grasp chute "B" and pull downward into the low position. Then re-tighten wing nut securely.

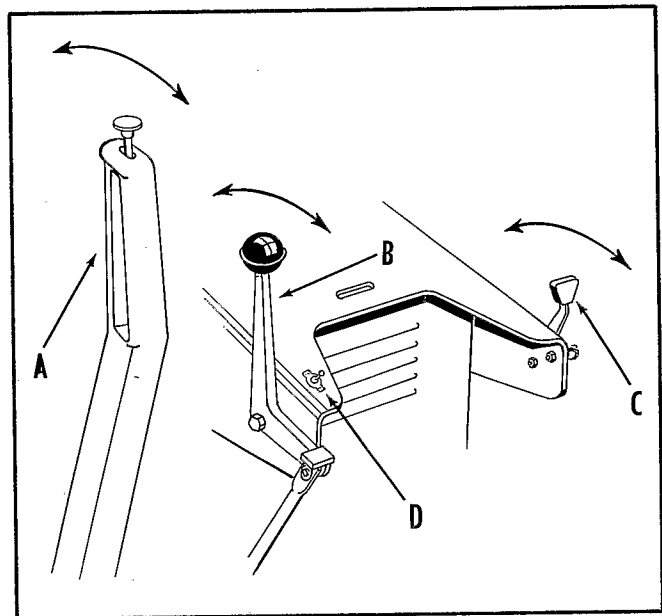


FIG. C. - CONTROL PANEL

All controls are conveniently located at the operator's fingertips.

To move the mower forward, push control lever "A" completely forward (away from operator). To reverse unit, depress button and pull handle all the way back (toward operator). Neutral is in the upright position.

To engage the cutter bar, pull control lever "B" to the rear. To disengage, push forward.

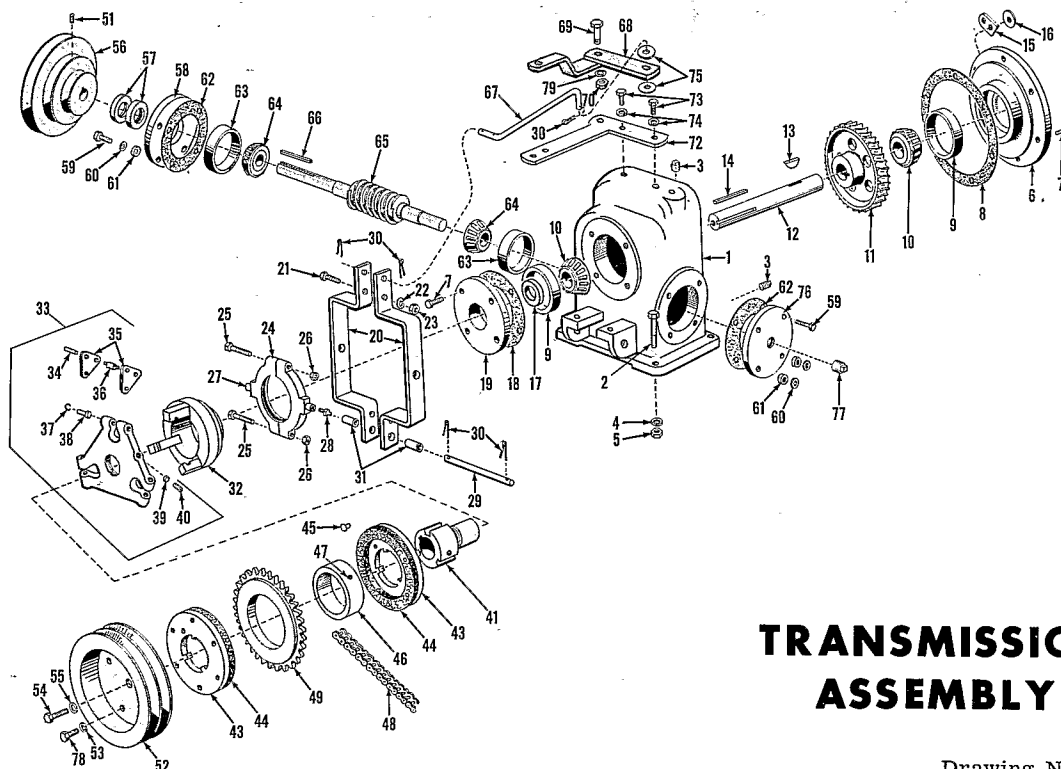
Push throttle control "C" forward to obtain desired speed.

To stop engine, push switch "D" to the "off" position. Be sure to place switch in "on" position when starting engine.

CAUTION!

DO NOT ATTEMPT TO WORK ON MACHINE WHILE THE ENGINE IS RUNNING. WE ALSO RECOMMEND THAT YOU DISCONNECT SPARK PLUG LEAD WIRE WHEN CHANGING OR WORKING ON THE CUTTER BAR.





TRANSMISSION ASSEMBLY

Drawing No. 251-5

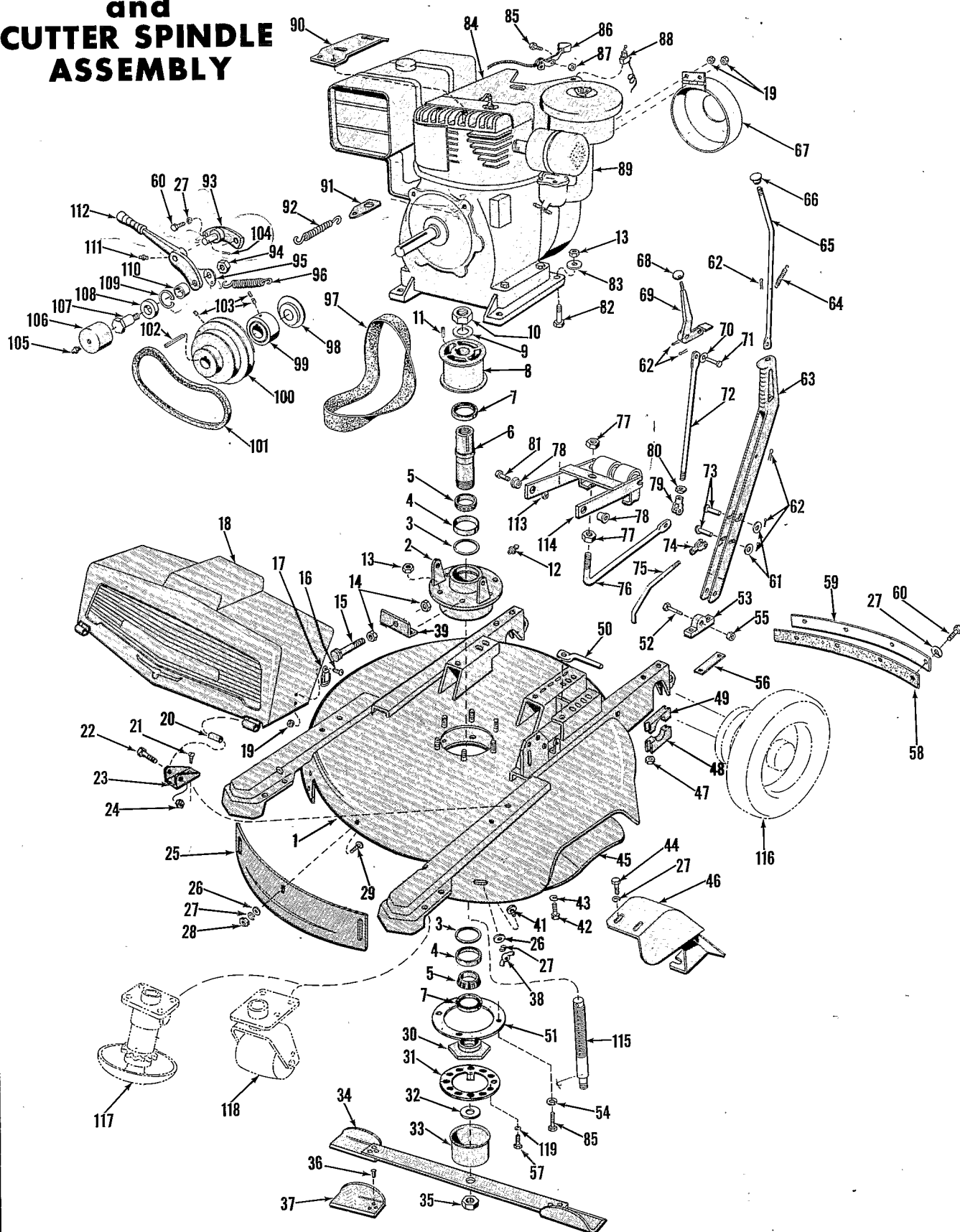
Ref. No.	Part No.	Description	No. Used
1	WS-200	Housing	1
2	3211-6	Screw	4
3	281-2	Plug	2
4	3256-24	Washer	4
5	3296-6	Locknut	4
6	WS-280	Bearing Cap	1
7	321-3	Screw	10
8	WS-260	Gasket	1-4
9	254-38	Bearing Cup	2
10	254-39	Bearing Cone	2
11	WM-268	Worm Gear	1
12	WS-275	Output Shaft	1
13	3257-22	Key	1
14	352-158	Key	1
15	WW-5652	Spring Anchor	1
16	3256-2	Washer	1
17	253-33	Oil Seal	1
18	WS-295A	Gasket	1
19	WS-285	Bearing Cap	1
20	WW-5608	Shift Yoke	2
21	322-5	Screw	2
22	3253-4	Lockwasher	2
23	3217-6	Nut	2
24	352-137	Release Brg. Assy., includes Refs. 25, 26, 27, 28	1
25	3210-9	Screw	2
26	3296-4	Nut	2
27	352-143	Trunnion Sleeve	2
28	302-22	Grease Fitting	1
29	WW-5614	Fulcrum Pin	1
30	3272-10	Cotter Pin	5
31	WW-5612	Spacer	2
32	352-134	Release Sleeve	1
33	352-144	Adjusting Plate Assembly	1
34	352-148	Lever Pin	3
35	352-146	Lever	6
36	352-147	Roller	3
37	352-163	Snap Ring	3
38	352-162	Pin	3

Ref. No.	Part No.	Description	No. Used
39	352-150	Lock Plug	1
40	32130-2	Set Screw	1
41	352-156	Clutch Body	1
43	352-151	Plate Assy., incl. Refs. 44 & 45	2
44	352-155	Facing	2
45	2118-22	Rivet	12
46	352-159	Bushing	1
47	352-160	Pin	1
48	4-9980	Chain, Traction	1
*	2710-16	Connecting Link	1
49	4-7890	Sprocket, Clutch	1
51	3246-3	Set Screw	1
52	4-1470	Pulley	1
53	3253-3	Lockwasher	3
54	323-7	Screw	1
55	3253-21	Lockwasher	1
56	4-9650	Pulley, 3 Groove	1
57	253-34	Oil Seal	2
58	WS-240	Bearing Cap	1
59	322-3	Screw	8
60	3256-23	Washer	5
61	WW-6773	Sealing Washer	5
62	WS-230	Gasket	1-3
63	254-19	Bearing Cup	2
64	254-37	Bearing Cone	2
65	WM-252	Worm Shaft, High Speed	1
66	WW-364	Key	1
67	WW-5607	Clutch Link	1
68	4-1800	Clutch Shift Lever	1
69	3211-6	Screw	1
70	3219-3	Nut	1
72	4-1340	Bracket	1
73	323-4	Screw	2
74	3253-21	Lockwasher	2
75	3256-24	Washer	2
76	WS-255	Bearing Cap	1
77	281-7	Plug	1
78	329-5	Screw	3
79	3253-21	Lockwasher	1

*Not Illustrated

INSIST ON GENUINE TORO PARTS

MAIN FRAME and CUTTER SPINDLE ASSEMBLY



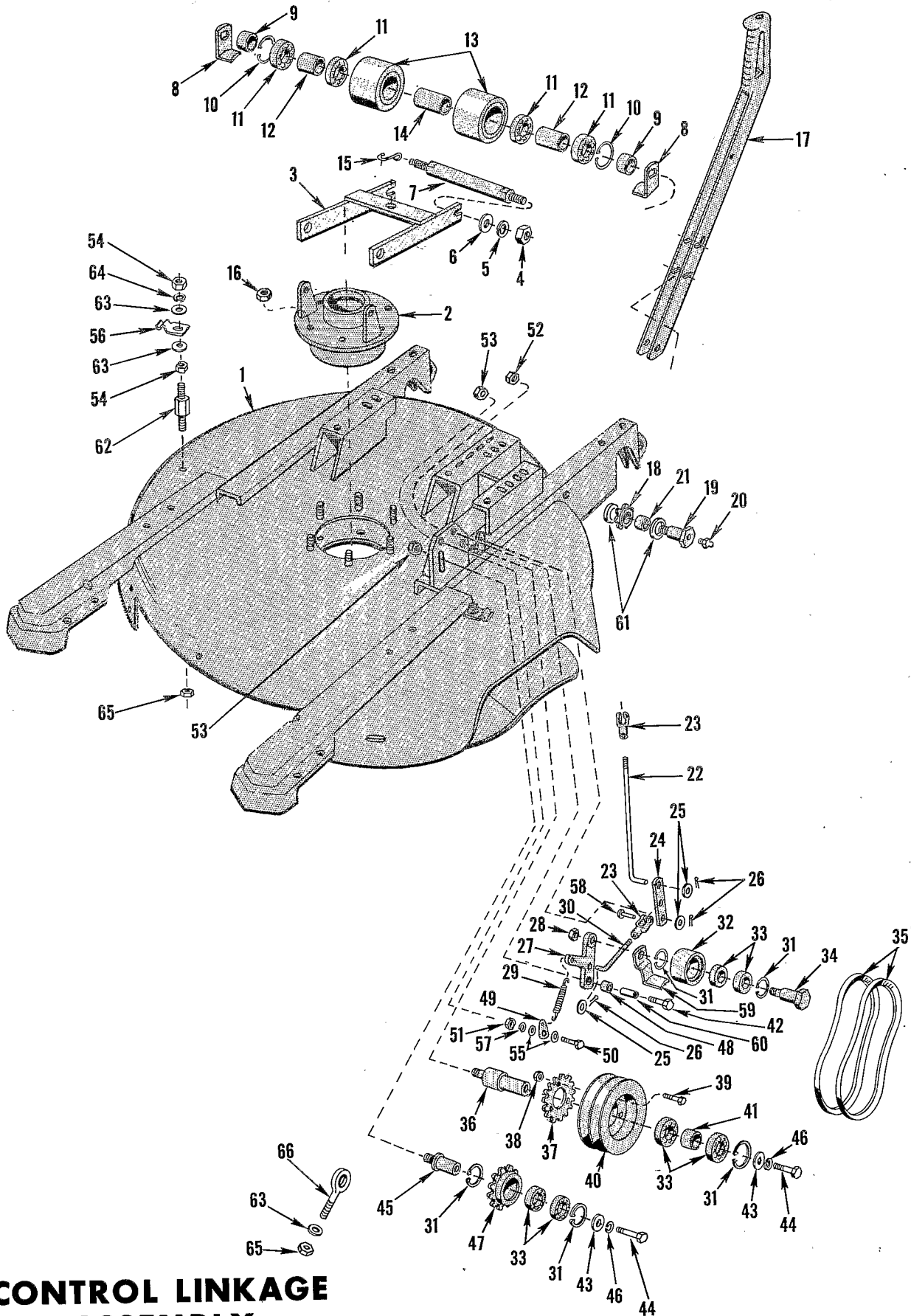
Drawing No. 251-6

MAIN FRAME ASSEMBLY PARTS LIST

Ref. No.	Part No.	Description	No. Used
1	4-1120	Main Frame	1
2	3-2331	Cutter Spindle Housing	1
3	32120-31	Snap Ring	2
4	254-66	Bearing Cup	2
5	254-65	Bearing Cone	2
6	3-3271	Cutter Spindle	1
7	253-90	Oil Seal	2
8	3-3268	Pulley	1
9	4-9180	Washer	1
10	3219-17	Nut	1
11	3-3267	Key	1
12	302-17	Grease Fitting	1
13	3296-6	Nut	6
14	3296-29	Nut	2
15	32141-36	Adjusting Screw	1
16	32100-2	Screw	4
17	249-8	Latch	2
18	3-2193	Front Shroud	1
19	3296-27	Stop Nut	6
20	3-2186	Bushing	2
21	32104-17	Screw	4
22	321-11	Screw	2
23	3-2191	Hinge Bracket	2
24	3296-16	Stop Nut	2
25	4-1410	Front Guard	1
26	3256-23	Washer	6
27	3253-4	Lockwasher	15
28	3217-6	Nut	5
29	3230-1	Bolt	5
30	3-4067	Clamp Nut	1
31	3-4068	Lock Collar	1
32	3256-9	Washer	1
33	4-7880	Cup	1
34	4-9530	Cutter Bar Assy.	1
*	3-1138	Cutter Bar Assy., N-Suction	1
35	3296-36	Nut	1
36	3264-1	Rivet	6
37	WW1501	Blade	1
*	WW1504	Blade (Non-Suction) Optional	1
38	32103-2	Wing Nut	1
39	3-1335	Bracket	1
41	3230-2	Bolt	1
42	323-5	Capscrew	6
43	3253-21	Lockwasher	6
44	3210-1	Screw	2
45	4-1480	Grass Deflector	1
46	4-4060	Chain Guard	1
47	3296-17	Nut	4
48	3-0771	Wheel Block	2
49	3-0770	Wheel Block	2
50	4-9490	Belt Guide	1
51	3-4015	Seal Retainer	1
52	3211-10	Screw	1
53	3-2133	Bracket	2
54	3254-1	Lockwasher	4
55	3296-6	Nut	5
56	3-0772	Strap	1
57	329-1	Screw	2
58	3-0343	Rear Guard	1
59	3-0345	Guard Strap	1
60	322-5	Screw	7

Ref. No.	Part No.	Description	No. Used
61	3256-23	Washer	2
62	3272-10	Cotter Key	6
63	3-2135	Control Handle	1
64	T-1020	Spring	1
65	3-1264	Rod	1
66	3-1271	Reverse Push Button	1
67	4-9290	Pulley Guard	1
68	233-1	Ball Grip	1
69	4-1430	Blade, Engaging Arm	1
70	3256-3	Washer	2
71	283-1	Pin	1
72	4-1440	Link	1
73	283-9	Pin	2
74	GB-119	Yoke	2
75	4-7820	Rod	1
76	4-1420	Blade Engaging Lever	1
77	3220-7	Nut, Jam	2
78	WW-1005	Bushing	2
79	282-11	Yoke	1
80	3220-5	Nut, Jam	1
81	323-29	Screw	2
82	3211-6	Screw	4
83	3256-24	Washer	4
84	4-9850	Control Panel	1
85	3251-2	Screw	6
86	4-9720	Throttle Control Assy.	1
87	3296-12	Nut	2
88	218-100	Switch	1
89	221-112 2-1-750	Engine	1
90	3-1115	Bracket	1
91	WW-5503	Spring Anchor	1
92	WW-5856	Spring	1
93	4-9820	Support, Idler Arm	1
94	3218-5	Jam Nut	1
95	WW-5652	Spring Anchor	1
96	WW-5657	Spring	1
97	4-9970	Flat Belt	1
98	4-9350	Flange, Engine Pulley	1
99	4-9640	Pulley, Flat Belt	1
100	4-9220	Pulley, Engine	1
101	271-95	V-Belt	1
102	WC-1472	Key	1
103	3246-3	Set Screw	3
104	3272-11	Cotter Key	1
105	302-2	Grease Fitting	1
106	4-1130	Idler Pulley	1
107	4-7780	Shaft, Idler Pulley	1
108	251-123	Bearing	1
109	WW-5656	Snap Ring	1
110	4-7790	Spacer	1
111	302-19	Grease Fitting	1
112	4-9610	Arm, Idler	1
113	3218-3	Nut	2
114	4-1350	Cantilever Frame	1
115	4-1170	Cutter Shaft	1
116		See pages 12 & 13 for Axle Assemblies	
117		See p. 16 for Kit #26210	
118		See p. 17 for Kit #26220	
119	3254-8	Lockwasher	2

*Not Illustrated



CONTROL LINKAGE ASSEMBLY

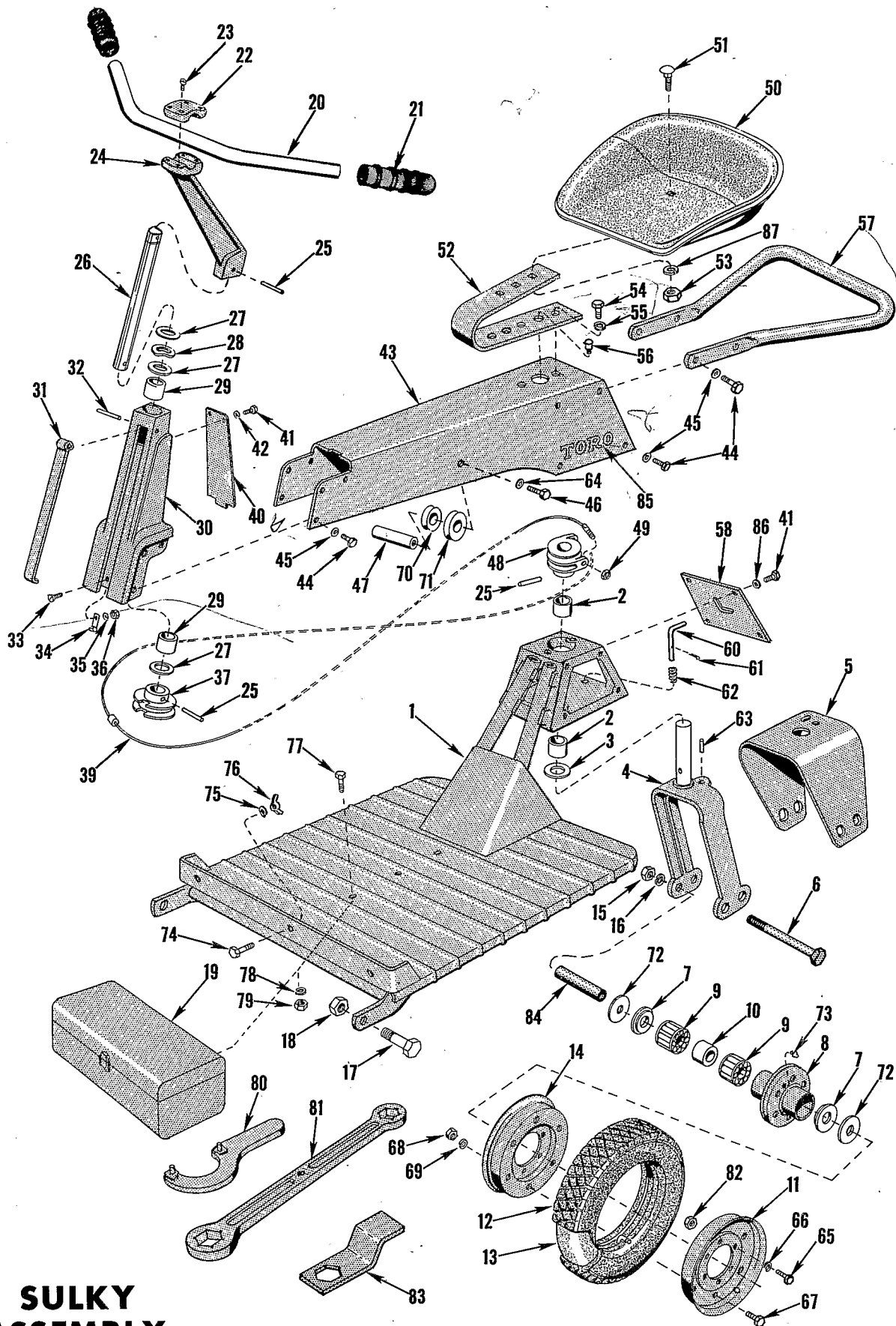
Drawing No. 251-8

CONTROL LINKAGE ASSEMBLY PARTS LIST

Ref. No.	Part No.	Description	No. Used
1	4-1120	Main Frame	1
2	3-2331	Cutter Spindle Housing	1
3	4-1350	Cantilever Frame	1
4	3220-6	Nut	2
5	3253-23	Lockwasher	2
6	3290-208	Washer	2
7	4-7860	Cantilever Shaft	1
8	4-9800	Belt Guide	2
9	4-9780	Spacer	2
10	WW-5656	Snap Ring	2
11	251-5	Bearing	4
12	WW-1045A	Spacer	2
13	WW-1031A	Idler Pulley	2
14	4-9790	Spacer	1
15	WW-5851	Spring Anchor	1
16	3296-6	Nut, Lock	6
17	3-2135	Control Handle	1
18	3-3961	Sprocket	1
19	3-3958	Stud	1
20	302-2	Grease Fitting	1
21	252-16	Needle Bearing	2
22	4-7970	Reverse Rod	1
23	GB-119	Yoke	2
24	4-7950	Reverse Link	1
25	3256-24	Washer	3
26	3272-10	Cotter Key	3
27	3-2774	Idler Arm	1
28	3220-4	Nut	1
29	WW-5657	Spring	1
30	4-7960	Rod, Reverse Link	1
31	32120-48	Retaining Ring	5
32	4-9170	Belt Idler, Reverse	1
33	251-132	Bearing	6

Ref. No.	Part No.	Description	No. Used
34	4-9250	Shoulder Bolt	1
*35	271-74	V-Belt	2
36	4-7840	Reverse Pulley Axle	1
37	4-7810	Sprocket	1
38	3296-13	Locknut	3
39	3273-22	Screw	3
40	4-7800	Reverse Pulley	1
41	4-9690	Spacer	1
42	3-2777	Screw	1
43	3256-3	Washer	2
44	322-2	Screw	2
45	3-1453	Shaft, Idler Sprocket	1
46	3253-4	Lockwasher	2
47	4-1360	Sprocket, Reverse Idler	1
48	256-17	Bushing, Idler Arm	1
49	WW-5652	Spring Anchor	1
50	3212-2	Screw	1
51	3219-4	Nut	1
52	3296-19	Locknut	3
54	3220-3	Nut	4
55	3256-25	Washer	2
56	4-1180	Latch Clip	2
57	3253-6	Washer	1
58	283-1	Clevis Pin	1
59	3-1333	Belt Guide	1
60	3-2776	Sleeve	1
61	253-64 353-64	Oil Seal	2
62	3-1452	Stud	2
63	3256-4	Washer	5
64	3253-2	Lockwasher	2
65	3296-5	Locknut	3
66	3-0568	Adjusting Screw	1

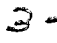
* Buy belts in matched sets only.



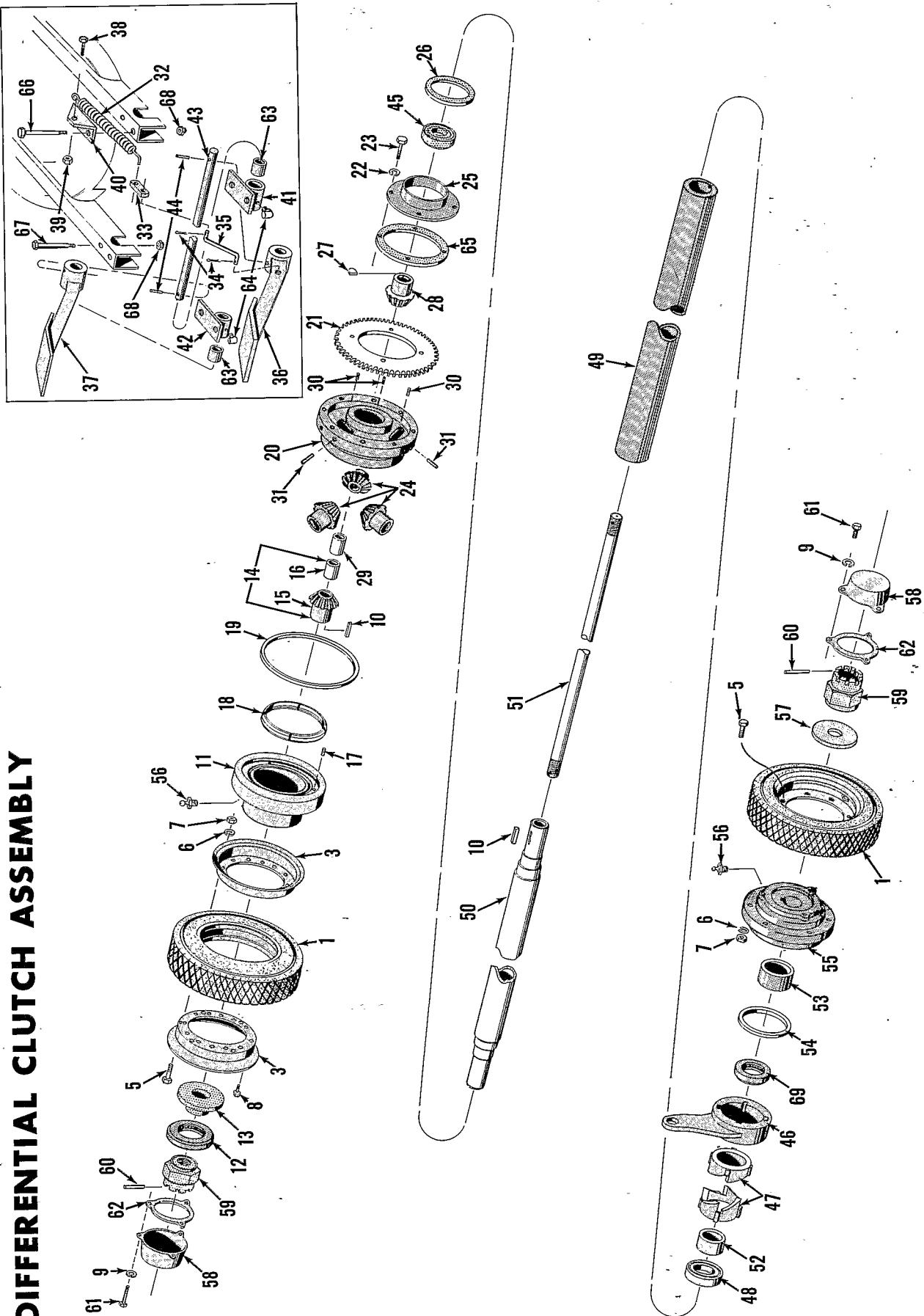
SULKY ASSEMBLY

Drawing No. 251-10

SULKY ASSEMBLY PARTS LIST

Ref. No.	Part No.	Description	No. Used	Ref. No.	Part No.	Description	No. Used
1	3-2140	Sulky Frame	1	44	322-3	Screw	8
2	256-85	Bushing	2	45	3254-2	Lockwasher	8
3	3-1332	Washer	1	46	329-2	Screw	2
4	3-2721	Fork	1	47	3-1184	Shaft	1
5	4-1540	Fender	1	48	3-2715	Sheave, Rear Cable	1
6	3214-18	Axle Bolt	1	49	3296-20	Locknut	1
7	242-4	Retainer	2	50	351-3	Seat	1
8	242-11	Hub Only	1	51	3233-9	Bolt	1
9	252-48	Wheel Bearing	2	52	4-9340	Seat Spring 	1
10	242-12	Spacer	1	53	3217-9	Nut	1
11	241-53	Wheel Disc-w/Valve Hole	1	54	322-5	Screw	2
12	231-2	Tire	1	55	3253-4	Lockwasher	2
13	232-15	Tube	1	56	301-1	Oiler	2
14	241-52	Wheel Disc.	1	57	4-9320	Transport Handle	1
15	32127-36	Nut	1	58	4-9570	Back Plate	1
16	3256-27	Cutwasher	1	60	4-9390	Wheel Lock Pin	1
17	325-7	Screw	2	61	3272-10	Cotter Key	1
18	3296-25	Locknut	2	62	4-9620	Spring	1
19	QK-429	Tool Box	1	63	32121-49	Pin	1
20	4-9440	Handle Bar	1	64	3254-8	Lockwasher	1
21	3-3863	Handle Grip	2	65	321-8	Screw	6
22	4-1680	Pivot Bracket Cap	1	66	3253-3	Lockwasher	6
23	3274-10	Screw	4	67	323-4	Screw	6
24	3-2720	Pivot Bracket	1	68	3217-7	Nut	6
25	32121-25	Pin	3	69	3253-21	Lockwasher	6
26	3-2717	Shaft	1	70	3-1274	Sheave	1
27	GM-215A	Washer	3	71	3-1273	Sheave (Large)	1
28	4-9460	Spring Washer	1	72	GM-215A	Washer	2
29	256-11	Bushing	2	73	302-21	Grease Fitting	1
30	4-1600	Steering Housing	1	74	322-6	Screw	1
31	3-0424	Sulky Hook	1	75	3253-4	Lockwasher	1
32	32121-27	Pin	1	76	32103-2	Nut	1
33	32108-48	Screw	1	77	322-2	Screw	2
34	4-9400	Clip	1	78	3254-2	Lockwasher	2
35	3256-1	Washer	1	79	3296-31	Nut	2
36	3296-27	Nut	1	80	1-6159	Wrench, for Height Adj.	1
37	3-2718	Sheave, Front Cable	1	81	3-0324	Wrench, for Height Adj.	1
39	4-1630	Steering Cable Assembly	1	82	3217-5	Nut	6
40	4-9410	Cover Plate	1	83	3-1461	Wrench, for Spindle Removal	1
41	3251-1	Screw	6	84	3-2716	Sleeve	1
42	3254-1	Lockwasher	2	85	3-1058	Decal	2
43	4-1580	Cantilever Frame	1	86	3254-1	Lockwasher	4
				87	3253-7	Lockwasher	1

DIFFERENTIAL CLUTCH ASSEMBLY



Drawing No. 251-12

DIFFERENTIAL CLUTCH ASSEMBLY PARTS LIST

Ref. No.	Part No.	Description	No. Used
1	3-1195	Tire	2
3	241-13	Wheel Disc, Inner	4
5	323-4	Capscrew	12
6	3253-5	Lockwasher, Heavy	12
7	3217-7	Nut, Hex	12
8	32140-15	Screw, Hex Sem	16
9	3253-3	Lockwasher	6
10	WW5155	Key	2
11	3-4101	Wheel Hub, L. H.	1
12	251-150	Thrust Bearing	1
13	3-1448	Pilot-Thrust Bearing	1
14	WWK5577	Side Gear Assy.	1
15	WW-5577	Gear	1
16	WW5578A	Bushing	1
17	B-51	Spring	6
18	3-2498	Wedge Ring	1
19	237-40	Quad Ring	1
20	3-4098	Differential Pinion Carrier	1
21	4-9280	Differential Sprocket	1
22	3253-4	Lockwasher	4
23	322-5	Capscrew	4
24	WW5600	Differential Pinion	3
25	3-1447	Seal Retainer	1
26	253-87	Oil Seal	1
27	3-2805	Woodruff Key	1
28	WW-5581	Side Gear	1
29	WW5599A	Bushing	1
30	3245-1	Set Screw	3
31	WW6107	Pin, Differential Pinion	3
32	Q-229	Spring	1
33	3-1444	Spring Eye	1
34	3272-6	Cotter Pin	2
35	3-1425	Link	1
36	3-3472	Pedal R. H.	1

Ref. No.	Part No.	Description	No. Used
37	3-3471	Pedal L. H.	1
38	321-4	Capscrew	1
39	3217-5	Nut, Hex	1
40	3-1443	Bracket, Return Spring	1
41	3-1450	Bracket R. H.	1
42	3-1426	Bracket L. H.	1
43	3-1422	Shaft	1
44	32121-46	Roll Pin	2
45	251-82	Thrust Bearing	1
46	3-1428	Clutch Lever	1
47	3-1433	Cam	2
48	251-14	Bearing	1
49	3-1430	Axle Housing	1
50	3-1440	Axle Shaft	1
51	3-1432	Actuating Rod	1
52	3-1418	Spacer	1
53	3-1431	Bushing	1
54	237-39	Quad Ring	1
55	3-1434	Wheel Hub R. H.	1
56	302-5	Grease Fitting	2
57	3256-8	Cutwasher	1
58	3-1445	Hub Cap	2
59	3-1427	Retaining Nut	2
60	32121-45	Roll Pin	2
61	321-2	Capscrew	6
62	3-1446	Gasket, Hub Cap	2
63	256-82	Bushing	2
64	301-2	Oiler	2
65	3-2545	Gasket-Seal Retainer	1
66	323-22	Screw	2
67	323-25	Screw	2
68	3296-17	Nut, Lock	4
69	251-151	Bearing	1

INSIST ON GENUINE TORO PARTS

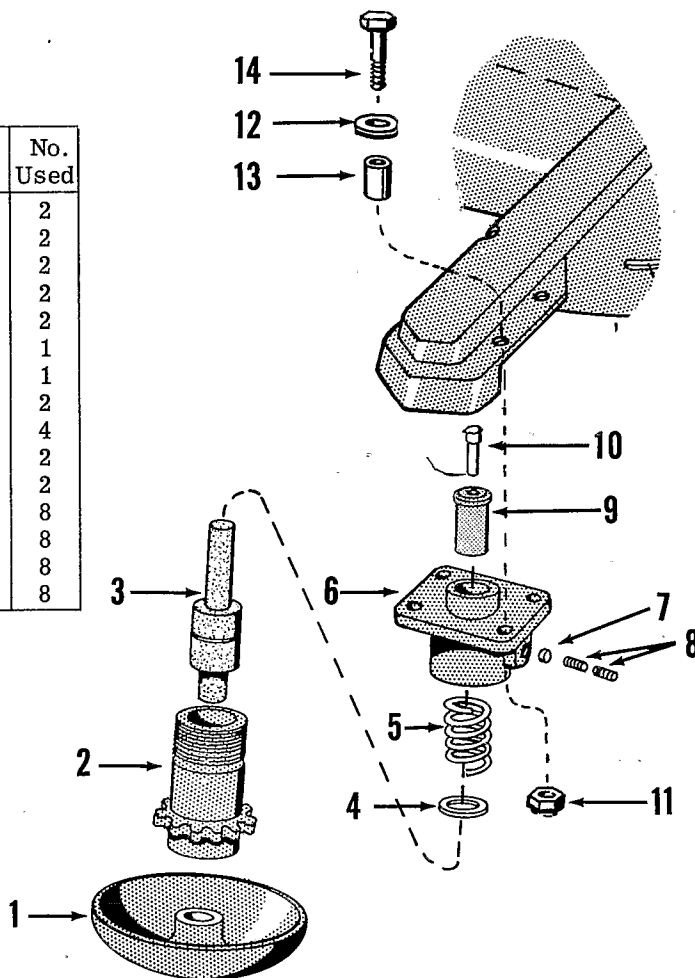


INSTALLATION INSTRUCTIONS and PARTS LIST for Steel Wheel Kit No. 26210

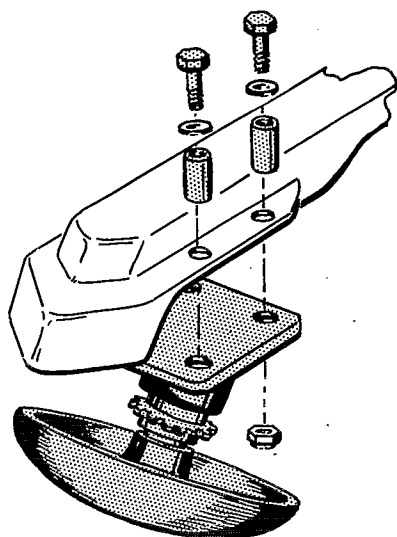
PARTS LIST

Ref. No.	Part No.	Description	No. Used
1	4-1750	Front Wheel	2
2	4-1760	Wheel Housing Cap	2
3	251-135	Bearing	2
4	4-1210	Spring Seat	2
5	4-1220	Spring	2
6	4-1230	Wheel Housing, Left	1
*	4-1200	Wheel Housing, Right	1
7	M-62	Plug	2
8	3246-2	Set Screw	4
9	4-1150	Bushing	2
10	301-11	Oiler	2
11	32146-5	Stop Nut	8
12	3256-24	Washer, S. A. E. Cut	8
13	3-0773	Wheel Block	8
14	322-9	Screw	8

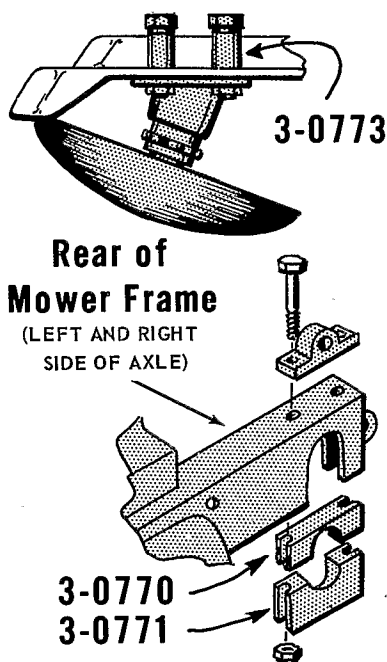
*Not Illustrated



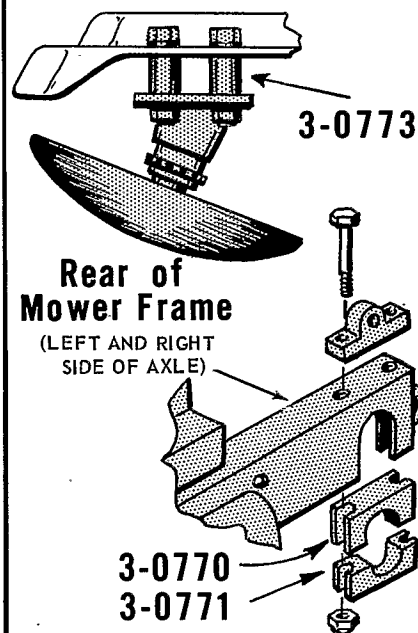
INSTALLATION



REGULAR INSTALLATION



TO INCREASE THE HEIGHT OF CUT TO 4 3/4"

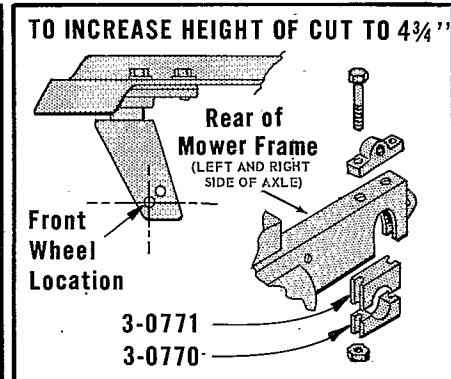
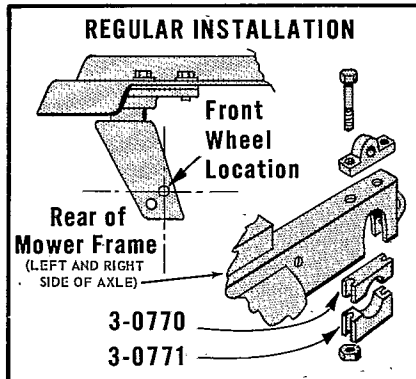
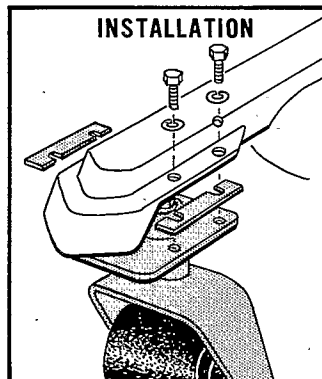
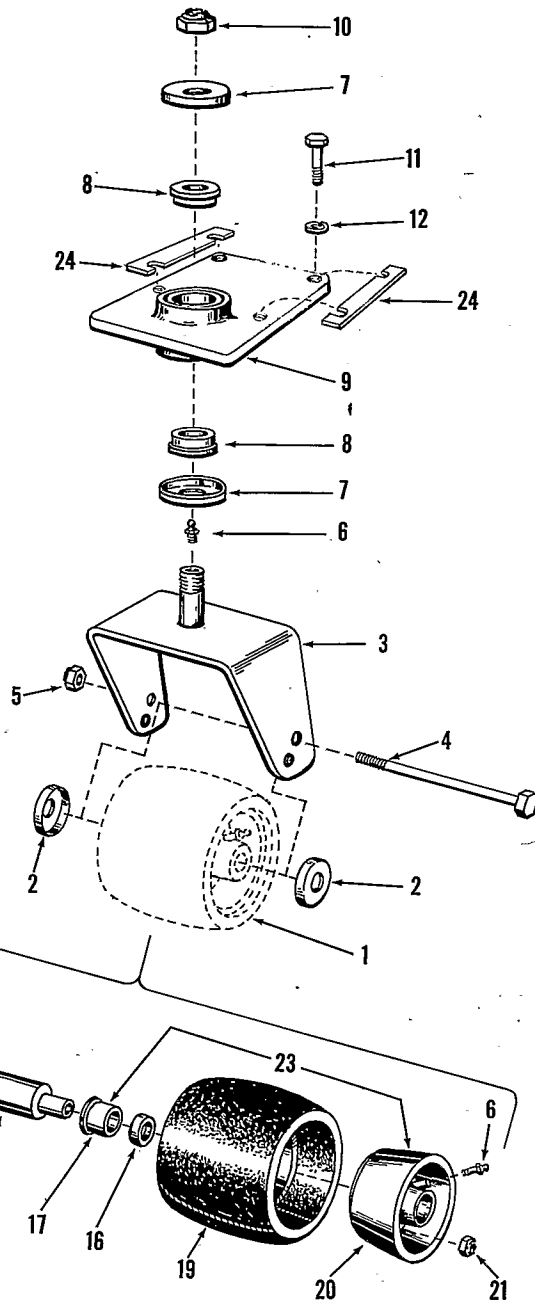


TORO INSTALLATION INSTRUCTIONS

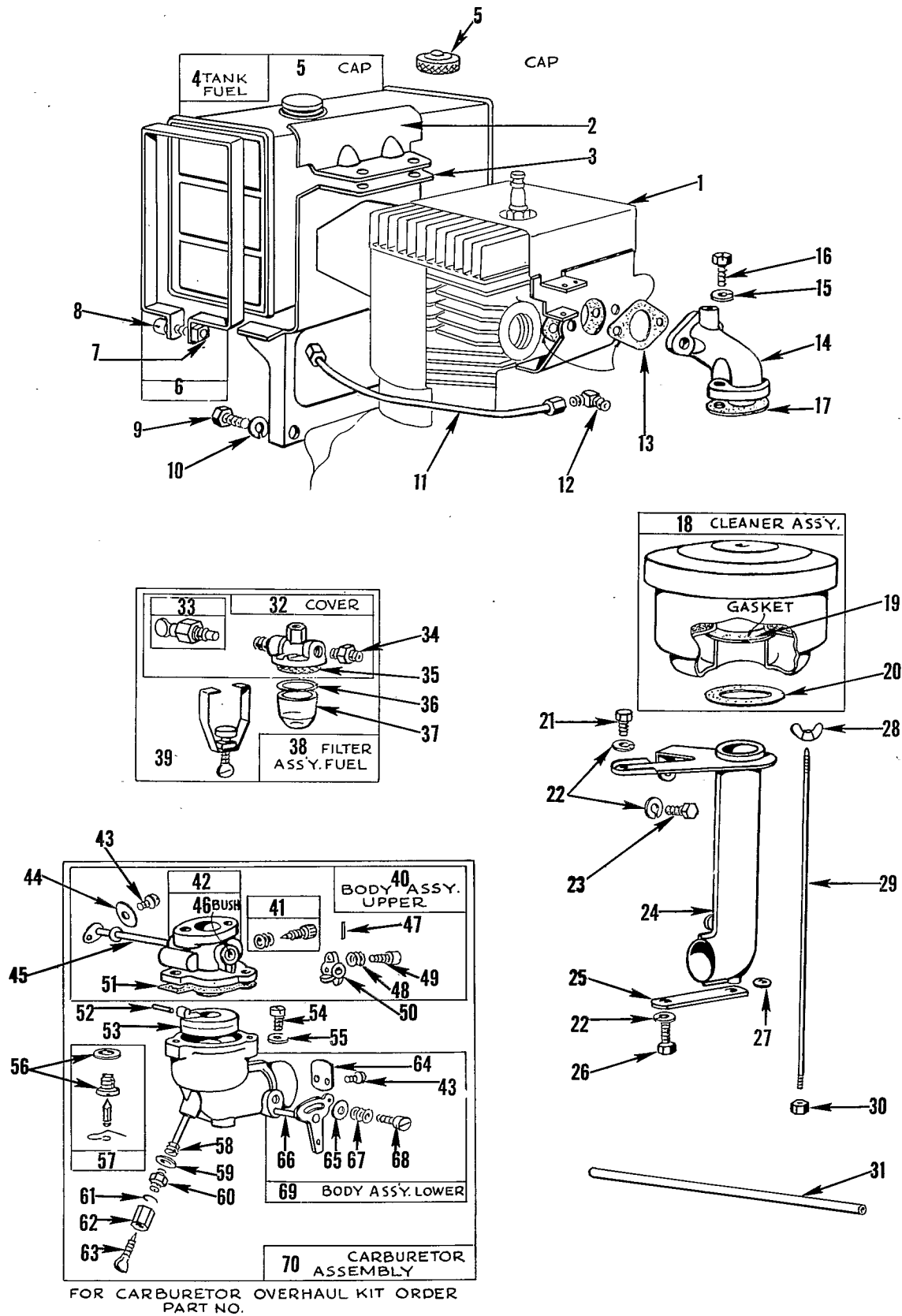
For Wheel Caster Kit No. 26220

PARTS LIST

Ref. No.	Part No.	Description	No. Used
1	1-9399	Wheel Assembly	2
2	PL-111	Slinger	4
3	3-1705	Caster Fork Assembly	2
4	323-25	Cap Screw	2
5	3296-11	Nut, Elastic Stop	2
6	302-5	Grease Fitting	4
7	3-1708	Slinger	4
8	251-34	Bearing	4
9	3-1706	Caster Plate	2
10	3296-15	Nut, Elastic Stop	2
11	3210-2	Screw	8
12	3253-4	Lockwasher	8
13	32113-10	Screw	6
14	3-1704	Caster Wheel Disc L. H.	2
15	3-1707	Gasket	2
16	253-84	Seal	4
17	256-113	Bushing	4
18	3-1713	Axle	2
19	3-1710	Tire	2
20	3-1703	Caster Wheel Disc R. H.	2
21	3296-8	Nut, Elastic Stop	6
22	1-9199	Disc & Bush. Assy. L. H.	2
23	1-9189	Disc & Bush. Assy. R. H.	2
24	3-1711	Shim	4



ENGINE No. 221-112 DRAWING "A"



Drawing No. 251-16

ENGINE NO. 221-112 DRAWING "A" PARTS LIST

Ref. No.	Part No.	Description	No. Used
1	291871	Guide, Front Air	
2	22907	Support, Upper Fuel Tank	
3	22813	Bracket, Fuel Tank	
4	292415	Tank, Fuel	
5	69221	Cap, Fuel Tank (Screw-on)	
5	69961	Cap, Fuel Tank (Bayonet)	
6	291490	Strap Assy., Fuel Tank	
7	90970	Square Nut	
8	91257	Screw	
9	92272	Screw	
10	90366	Lockwasher	
11	99396	Pipe, Fuel-13" Long	
12	63377	Connector, Fuel Pipe	
◆	13	27381	Gasket
14	21920	Elbow, Carb. Intake	
15	90832	Lockwasher	
16	90700	Screw	
◆	17	65647	Gasket, Intake Elbow
18	291858	Air Cleaner Assy.	
19	27401	Gasket, Air Cleaner	
◆	20	67247	Gasket, Air Cleaner Mtg.
21	92863	Screw	
22	90832	Lockwasher	
23	92666	Screw	
24	294632	Pipe, Air Cleaner	
25	22832	Strap, Air Cleaner Pipe	
26	91468	Screw	
27	66648	Gasket, Air Cleaner Stud	
28	92650	Wing Nut	
29	23870	Nut	
30	92129	Nut	
31	66788	Tube	
32	99909	Cover Assy., Fuel Filter	
33	295913	Valve, Fuel Shut-Off	
34	53029	Connector, Fuel Pipe	
35	22547	Screen, Fuel Filter	

Ref. No.	Part No.	Description	No. Used
◆	36	68477	Gasket, Filter Bowl
37	68487	Bowl, Fuel Filter	
38	99910	Filter Assy., Fuel	1
39	99665	Yoke Assy., Fuel Filter	
40	291655	Body Assy., Upper Carb.	
41	292681	Needle Valve Assy.	
42	99375	Body, Upper Carburetor	
43	93038	Screw	
44	62940	Valve, Throttle	
45	291300	Shaft Assy., Throttle	
46	23108	Bushing, Throttle Shaft	
47	93043	Pin, Throttle Lever	
◆◆	48	26157	Spring, Throttle Adj.
49	91920	Screw	
50	61967	Stop, Throttle	
◆◆	51	27034	Gasket, Carb. Body
◆◆	52	23114	Pin, Float Hinge
53	99333	Float, Carburetor	
54	90746	Screw	
55	92290	Lockwasher	
56	27639	Gasket, Fuel Inlet Valve	
◆◆	57	293962	Valve & Seat, Fuel Inlet
◆◆	58	99345	Nozzle, Carburetor
◆◆	59	68667	Gasket, Nozzle
◆◆	60	23117	Retainer, Needle Valve
◆◆	61	68677	Packing, Needle Valve
◆◆	62	23118	Nut, Needle Valve Packing
◆◆	63	230009	Valve, Needle
64	62872	Valve, Choke	
65	62899	Washer	
66	89531	Shaft & Lever, Choke	
67	26155	Spring, Choke Lever	
68	23123	Screw, Choke Lever	
69	89915	Body Assy., Lower	
70	293950	Carburetor Assy.	
*	291763	Carburetor Overhaul Kit	

*Not Illustrated

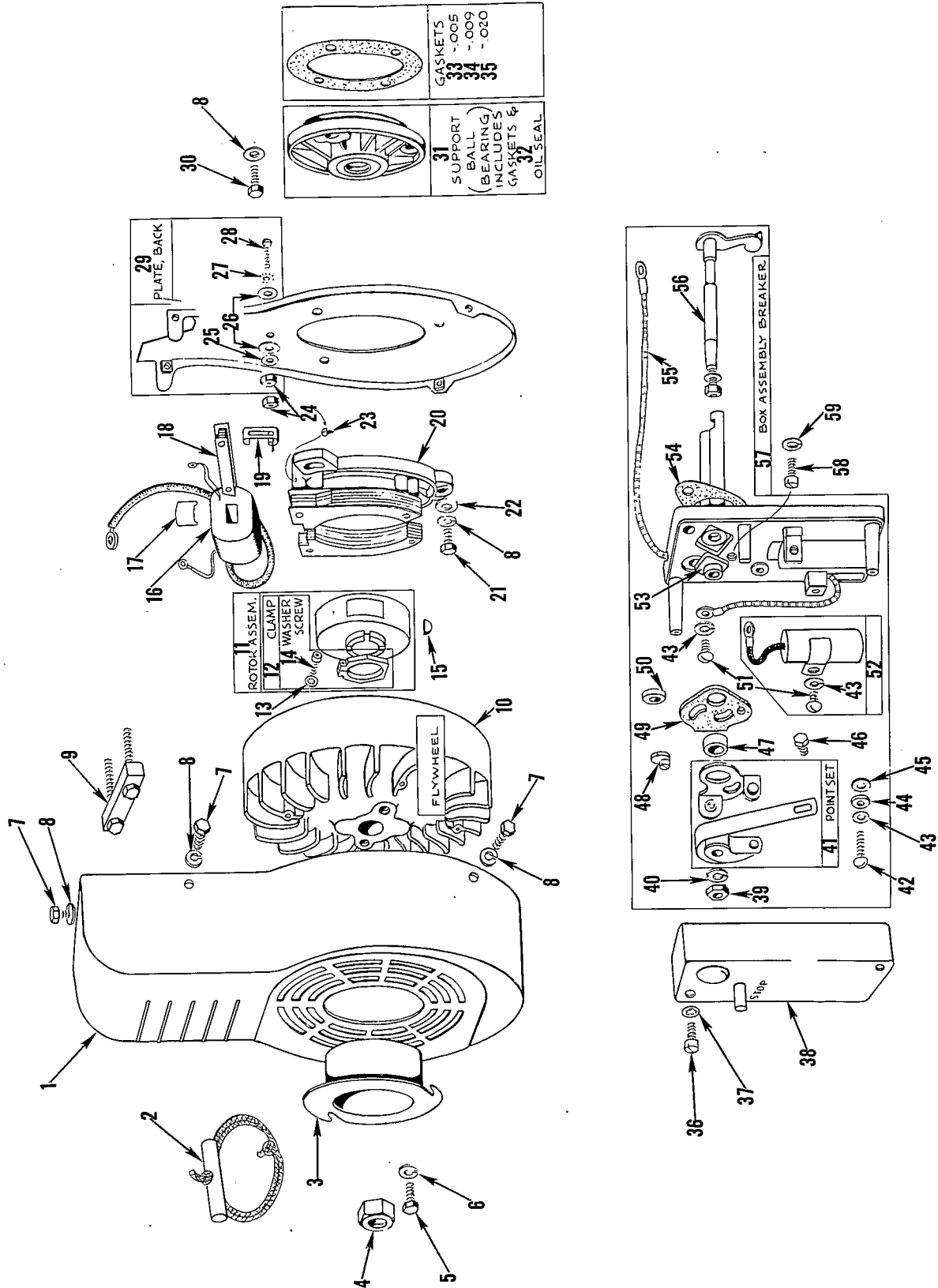
◆Included in Gasket Set No. 291728

◆◆Included in Carburetor Overhaul Kit No. 291763

Parts are shown for identification purposes only.

Please obtain from your Authorized Briggs & Stratton Service Dealer.

ENGINE No. 221-112 DRAWING "B"



Drawing No. 251-18

ENGINE NO. 221-112 DRAWING "B" PARTS LIST

Ref. No.	Part No.	Description	No. Used	Ref. No.	Part No.	Description	No. Used
1	295677	Housing, Flywheel		30	90700	Capscrew	
2	69932	Rope, Starter		31	291672	Support Assy., Ball Brg.	
3	22809	Pulley, Rope Starter		32	290932	Oil Seal	
4	23949	Nut, Flywheel		◆ 33	27374	Gasket, .005"	
5	92272	Capscrew		◆ 34	27375	Gasket, .009"	
6	90366	Lockwasher		◆ 35	27349	Gasket, .020"	
7	92666	Capscrew		36	90211	Screw	
8	90832	Lockwasher		37	92791	Lockwasher	
9	19068	Puller, Flywheel (Optional Accessory)		38	290882	Cover, Breaker	
10	291657	Flywheel Assy.		39	92581	Nut	
11	291363	Rotor Assy.		40	90362	Lockwasher	
12	295128	Clamp, Rotor Assy.		41	292021	Point Set, Breaker	
13	92813	Washer		42	90072	Screw	
14	93186	Screw		43	90367	Lockwasher	
15	92269	Key		44	22787	Washer	
16	290880	Coil, Magneto (Incl. Ignition Cable)		45	66068	Washer, Insulating	
17	22859	Retainer, Coil		46	92576	Screw	
18	290614	Core, Coil		47	66078	Bushing, Pivot	
19	22928	Clip, Armature Spring		48	23829	Eccentric	
20	290621	Armature & Support Assy.		49	66048	Plate, Insulator	
21	91146	Capscrew		50	291106	Oil Seal	
22	62199	Washer, Arm Support Mtg.		51	90067	Screw	
23	90923	Screw		52	291369	Condenser	
24	90576	Nut		53	28102	Bushing Clamp	
25	26404	Washer		◆ 54	27299	Gasket, Breaker Box	
26	66154	Washer		55	290930	Lead, Primary	
27	92864	Lockwasher		56	291658	Breaker Shaft Assy.	
28	90072	Screw		57	291659	Breaker Box Assy.	
29	291401	Plate Back Assy.		58	92578	Screw	
				59	92290	Lockwasher	

◆ Included in Gasket Set No. 291728

Parts are shown for identification purposes only.

Please obtain from your Authorized Briggs & Stratton Service Dealer.

ENGINE No. 221-112 DRAWING "C"

56	— RING, PISTON, COMP.
57	— TOP & CENTER, STD.
58	— RING - .010 OVERSIZE
59	— " - .020 " "
60	— " - .030 " "
61	— RING, PISTON, OIL, STD.
62	— " - .010 OVERSIZE
63	— " - .020 " "
	— " - .030 " "

INCLUDES PISTON RINGS & PIN LOCKS

73	— PISTON ASSEMBLY, STD.
74	— .010 - OVERSIZE
75	— .020 - " "
76	— .030 - " "

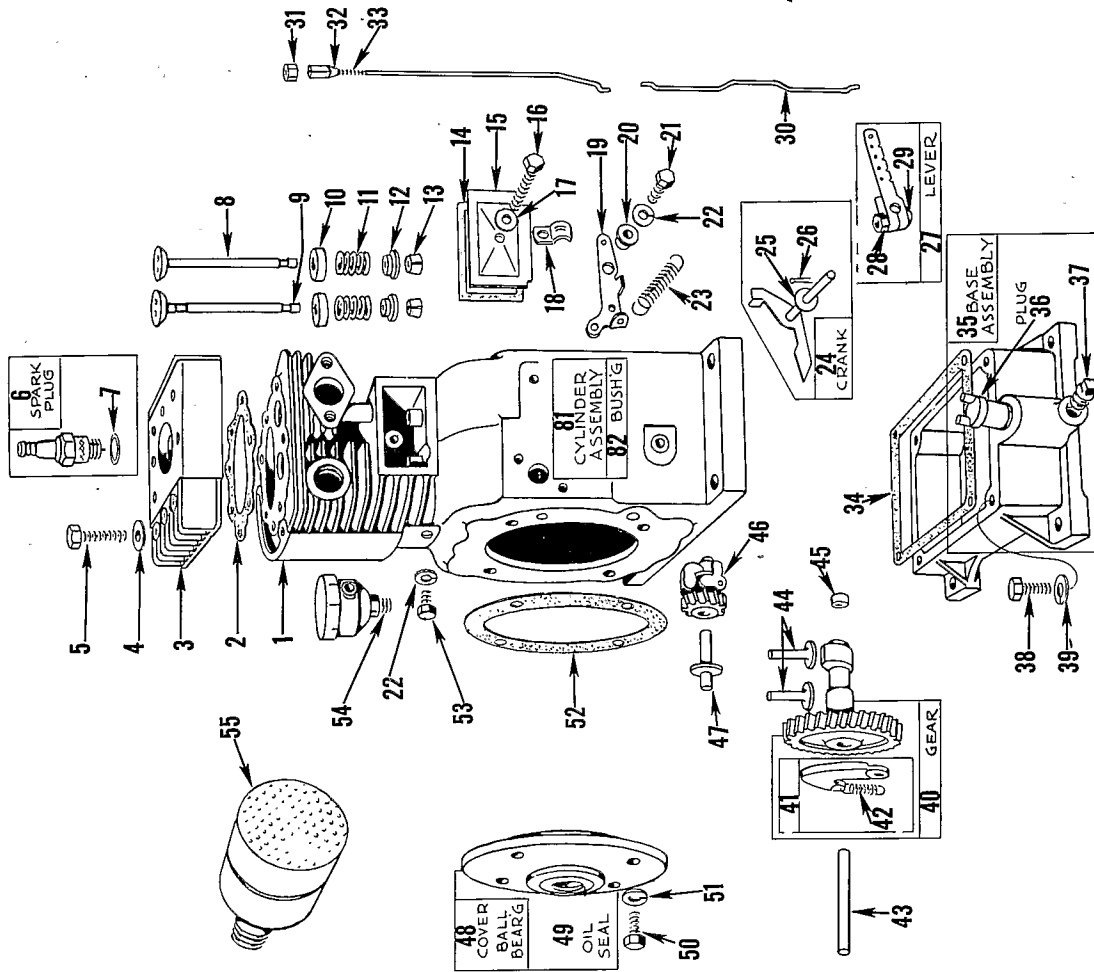
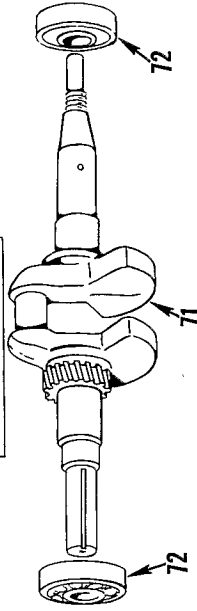
RING SETS - PISTON

77	— STANDARD
78	— .010 - OVERSIZE
79	— .020 - " "
80	— .030 - " "

64	→	G	←	64	
65	— PIN ASSEMBLY, PISTON, STD.				
66	— PIN ASSY, PISTON, .005 O.S.				

The diagram shows a connecting rod assembly. Callout 64 points to the small end of the rod. Callout 65 points to the pin assembly at the small end. Callout 66 points to the pin assembly at the large end. Callout 67 points to the rod body. Callout 68 points to the pin assembly at the large end. Callout 69 points to the pin assembly at the large end. Callout 70 points to the pin assembly at the large end.

67	ROD ASSY. CONNECTING
68	→
69	→
70	→



ENGINE NO. 221-112 DRAWING "C" PARTS LIST

Ref. No.	Part No.	Description	No. Used
1	22951	Shield, Cylinder	
2	27352	Gasket	
3	210580	Head, Cylinder	
4	22963	Washer, Cyl. Head	
5	92674	Screw, Cyl. Head	
6	29693	Spark Plug	
7	29806	Gasket, Spark Plug	
8	23922	Valve, Intake	
9	23923	Valve, Exhaust	
10	62222	Cup, Valve Spring	
11	65906	Spring, Valve	
12	68293	Retainer, Valve Spring	
13	68283	Collar, Val. Spg. Ret.	
14	66214	Gasket	
15	22795	Cover, Valve	
16	90931	Capscrew	
◆17	22353	Washer, Valve Cover	
18	220851	Clip	
19	22814	Lever, Gov. Control	
20	23849	Bushing, Control Lever	
21	91422	Capscrew	
22	90832	Lockwasher	
23	26764	Spring, Governor	
24	291364	Crank Assy.	
25	22826	Wash, Gov. Crank	
26	91984	Cotter Pin	
27	291365	Lever Assy.	
28	90356	Nut	
29	92613	Bolt, Gov. Lever	
30	26725	Link, Throttle	
31	23402	Governor Knob	
32	21772	Nut, Gov. Adj.	
33	230040	Cable	
34	27351	Gasket, Engine Base	
35	291404	Base Assy.	
36	66768	Plug	
37	91084	Pipe Plug	
38	90887	Screw	
39	92268	Lockwasher	
40	291400	Cam Gear Assy.	
41	291727	Weight, Spark Advance	
42	26719	Spring, Spark Advance	

Ref. No.	Part No.	Description	No. Used
43	66203	Shaft, Cam	
44	26670	Tappet, Valve	
45	65932	Plug, Cam Shaft	
46	291192	Gear Assy., Governor	
47	291177	Shaft, Governor Gear	
48	291665	Cover Assy., Crankcase	
49	291675	Oil Seal	
50	92272	Screw	
51	90366	Lockwasher	
◆52	27350	Gasket, Crankcase Cover	
53	92666	Lockwasher	
54	294630	Stud	
55	290933	Muffler	
56	210076	Ring, Piston, Standard	
57	210077	Ring, Piston .010" O.S.	
58	210078	Ring, Piston .020" O.S.	
59	210079	Ring, Piston .030" O.S.	
60	61292	Ring, Piston, Oil Standard	
61	61335	Ring, Piston, Oil .010" O.S.	
62	61336	Ring, Piston, Oil .020" O.S.	
63	61337	Ring, Piston, Oil .030" O.S.	
64	65776	Lock, Piston Pin	
65	69925	Pin Assy, Piston-Standard	
66	29103	Pin Assy., Piston-.005" O.S.	
67	291647	Connecting Rod Assy.	
68	22927	Dipper, Conn. Rod	
69	22946	Lock, Conn. Rod Screw	
70	230557	Shoulder Screw, Conn. Rod	
71	260304	Crankshaft	
72	291667	Ball Bearing	
73	99947	Piston Assy. - Standard	
74	99948	Piston Assy., .010" O.S.	
75	99949	Piston Assy., .020" O.S.	
76	99950	Piston Assy., .030" O.S.	
77	292100	Ring Set, Standard Piston	
78	292101	Ring Set, .010" O.S.	
79	292102	Ring Set, .020" O.S.	
80	292103	Ring Set, .030" O.S.	
*	291728	Gasket Set	
81	291641	Cylinder Assy.	
82	23837	Bushing	

* Not Illustrated

◆ Included in Gasket Set #291728

Parts are shown for identification purposes only.

Please obtain from your Authorized Briggs & Stratton Service Dealer.

NOTES

NOTES

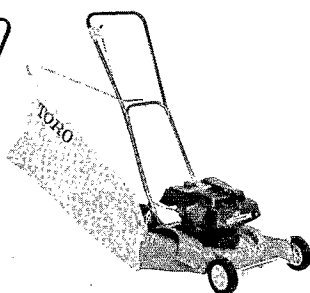
TORO POWER MOWERS

Toro power mowers and Power Handle implements are designed and built to give years of precision performance . . . to make them "the best you can buy." And there's over 40 years of manufacturing experience to back them up. One of Toro's most important objectives — and one which has

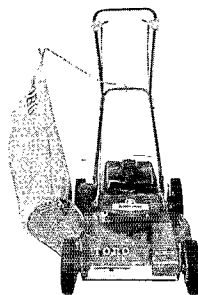
helped make Toro the world's largest manufacturer of power mowers — is to provide the customer with complete local service and parts. This Toro has done through an extensive chain of service dealers, factory-trained to give you the most careful, competent care for your Toro work-saver.



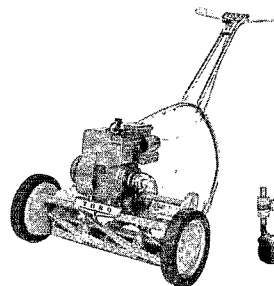
19" WHIRLWIND



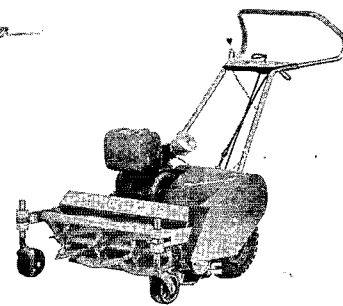
21" HAND PROPELLED WHIRLWIND



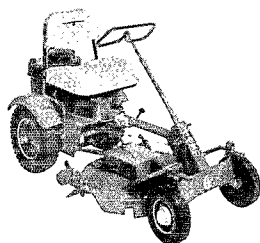
21" SELF-PROPELLED WHIRLWIND



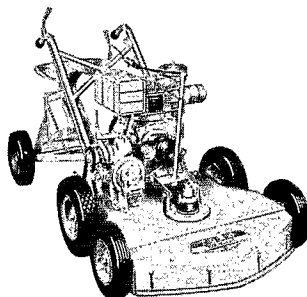
21" SPORTLAWN



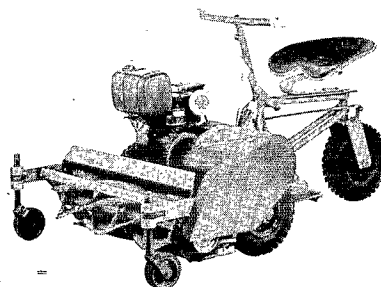
25" PARKLAWN



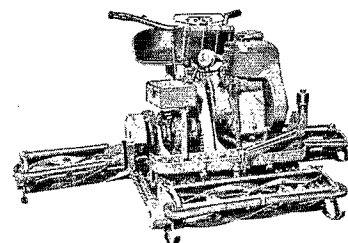
RED RIDER



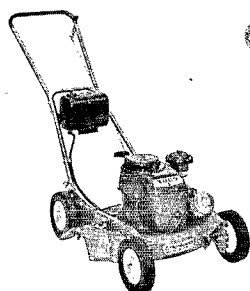
31" GRASSKING



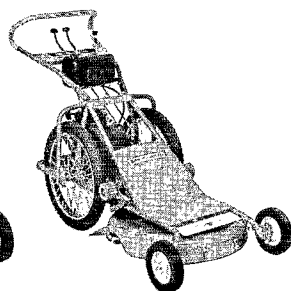
30" PARKLAWN



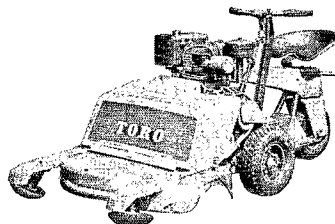
76" PROFESSIONAL



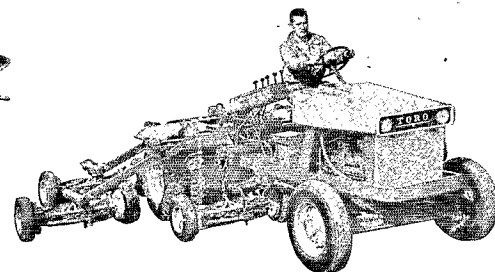
21" HEVI-DUTY WHIRLWIND



25" HEVI-DUTY WHIRLWIND



32" SELF-PROPELLED WHIRLWIND



7 UNIT HYDRAULIC PARKMASTER

Reel Mower or Rotary Mower . . . Self Propelled or Riding Mower . . . Whatever your preference in Power Mowers, Toro makes a model to fit your needs. Choose from Toro's complete line of fine mowing equipment.

Toro has a mower that's just right for you. And Toro Mowers are the best you can buy!

TORO MANUFACTURING CORPORATION - Minneapolis 20, Minnesota, U.S.A.

LITHO IN U. S. A.

TORO Builds the right Power Mower for every need!