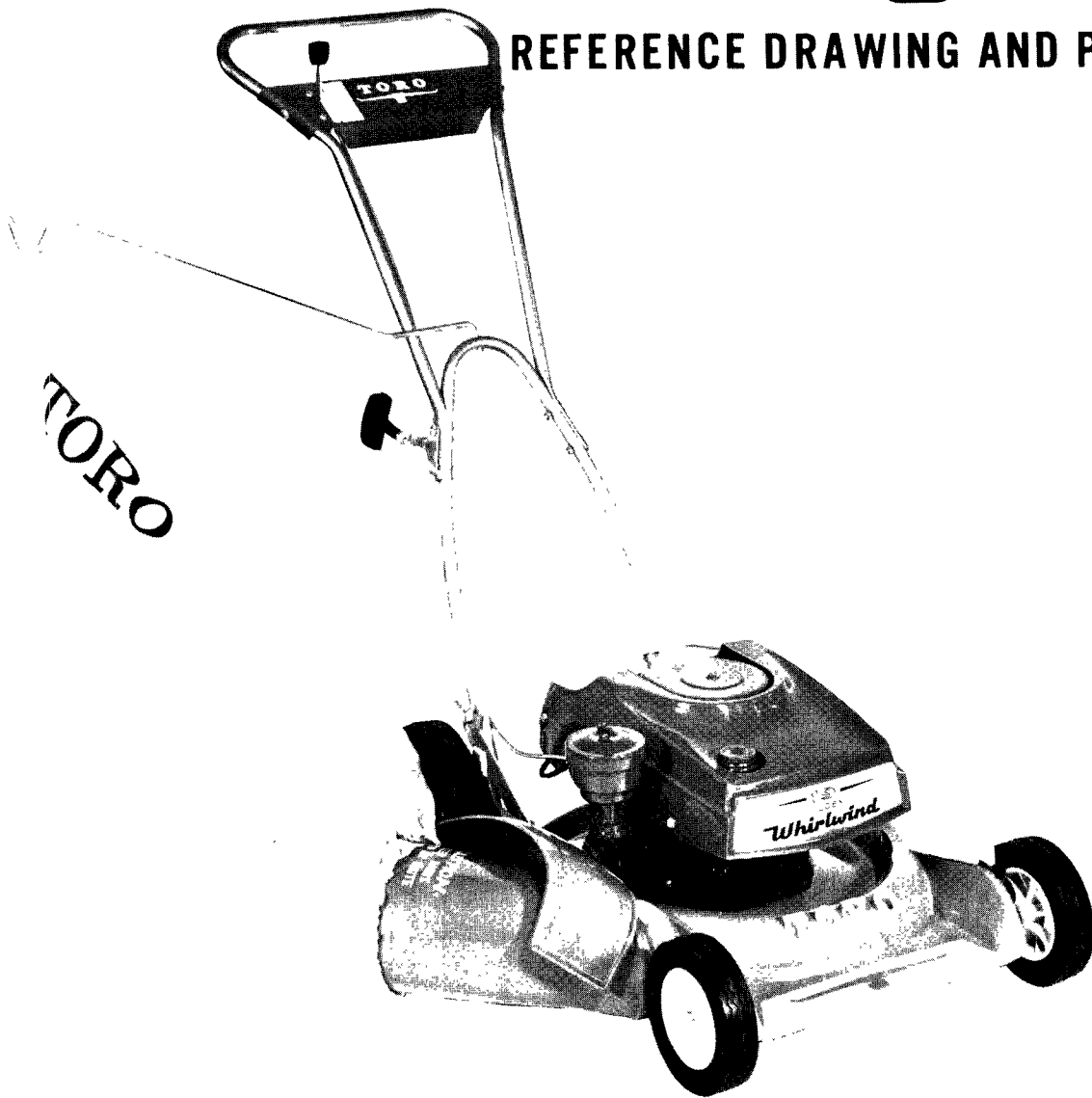


1965



## REFERENCE DRAWING AND PARTS LIST



### **19" WHIRLWIND - H.P.**

MODEL NO. 18110-500001 & UP  
(RECOIL START)

MODEL NO. 18120-500001 & UP  
(SPIN START)

### **21" WHIRLWIND - H.P.**

MODEL NO. 19120-500001 & UP

### **21" WHIRLWIND - S.P.**

MODEL NO. 20120-500001 & UP

Price 25 cents

## SPECIFICATIONS

**ENGINE:** 19" - Toro (Recoil) TE3-40043D, (Impulse) TE3-40044D; 21" H. P. - Toro TE3-40044D; 21" S. P. - Toro TE3-40045D.

**ENGINE SHROUD:** Rigid Polyethylene.

**FUEL TANK CAPACITY:** 1 quart.

**CUTTER BLADE:** 19" - 19" long; 21" H. P. and 21" S. P. - 21" long, "S" shaped hardened.

**TRACTION CLUTCH (21" S. P.):** Hand operated lever and control wire system mounted to escutcheon plate on upper handle which operates spiral jaw clutch in gear case on drive shaft.

**FRONT WHEEL TRACTION DRIVE (21" S. P.):** Special 3L V-belt, with an approximate 10 degree misalignment, running between two pulleys. The steel engine shaft pulley, integral with the blade hub, has a 2.0 eff. O.D.; the powdered iron worm shaft pulley, held with a D-shaped hole, has a 2.5 eff. O.D. The engine to gear box reduction is 1.27:1.

**GEAR CASE (21" S. P.):** Die cast aluminum case. Hardened and polished 4 thread steel worm supported by ball and needle bearings and bronze bushings (6.25:1 reduction). Lubrication requirement: 2 oz. SAE 90 with extreme pressure characteristic.

**WHEEL REDUCTION (21" S. P.):** 14T Stressproof steel pinions on drive shaft supported by double sealed ball bearings to 42T laminated steel external spur gears riveted to wheel (3:1 reduction).

**REDUCTION, ENGINE TO WHEELS (21" S. P.):** 23.8:1

**WHEELS:** #18 ga. Steel disc with oil impregnated powered metal bushings.

**TIRES (19" and 21" H. P.):**

Front - Semi-pneumatic 6 x 1.50 Toro tread  
Rear - Semi-pneumatic 8 x 1.75 Toro tread

**TIRES (21" S. P.):** Semi-pneumatic 8 x 1.75 Toro tread.

**HEIGHT OF CUT:** 1/2" to 3" by moving wheels, with hand operated levers.

**WIDTH OF CUT:** 19" and 21"

**HOUSING:** Die cast aluminum alloy, spiral grass chamber, right hand discharge. Symmetrical wheel locations. Hinged chute deflector.

**HANDLE:** 3/4" O.D. x #16 ga. welded steel tubing in separable halves. No tool, positive handle height adjustment.

**THROTTLE CONTROL:** Control wire and casing. Operating lever mounted to escutcheon plate on upper handle. Stop, run, and choke positions. Spin Start engines are equipped with positive mechanical interlock between starter release and throttle control.

### DIMENSIONS:

Width 19" - 22 1/2"; 21" H. P. and 21" S. P. - 24 1/2"

Length 19" - 29"; 21" H. P. - 30 1/2"; 21" S. P. - 32 1/2"  
w/o handle, wheels at 1" cut

Height 19" - 11 3/8" (Recoil Start)  
19" and 21" H. P. - 13 1/4" (Spin Start)  
21" S. P. - 14 1/2" (Spin Start)

### WEIGHT:

19" - 51 pounds  
21" H. P. - 54 pounds  
21" S. P. - 66 pounds

### STANDARD EQUIPMENT:

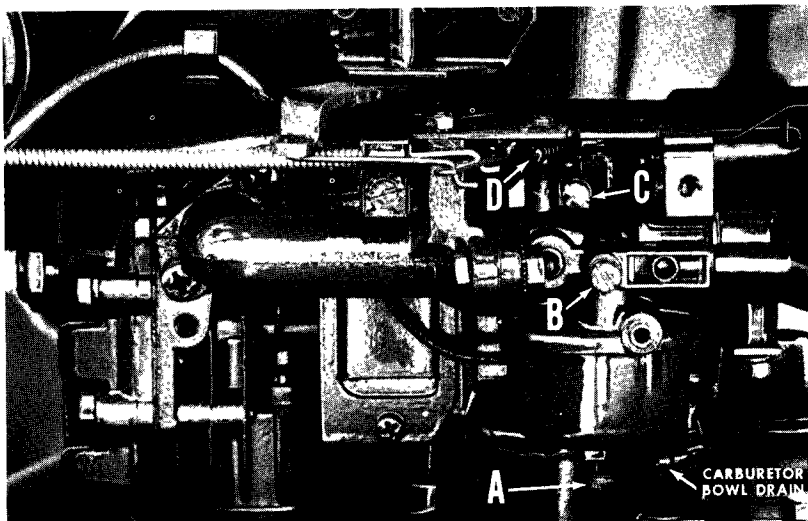
Bagging kit  
- Grass bag assembly  
- Bagging attachment  
- Bag hanger  
Anti-scalp dish

## CARBURETOR ADJUSTMENTS

Power and idle screw adjustments are set at the factory for best performance. If it should become necessary to adjust the carburetor, proceed as follows:

### HIGH SPEED ADJUSTMENTS

1. Initial adjustment, turn high speed adjusting screw "A" clockwise until finger tight.
2. Carefully turn high-speed adjusting screw "A" in a counter-clockwise direction 1 turn.
3. After engine has warmed up, make final adjustments by turning adjusting screw and eighth of a turn at a time, allowing an interval between adjustments for the engine to react.



4. If engine speed is not high enough, adjust high speed by turning screw "D". After increasing speed, make final high speed carburetor adjustments with high speed adjusting screw "A". Allow setting to be slightly rich to compensate for load. Turn counterclockwise to richen mixture.

1. Turn idle adjusting screw "B" clockwise until finger tight.

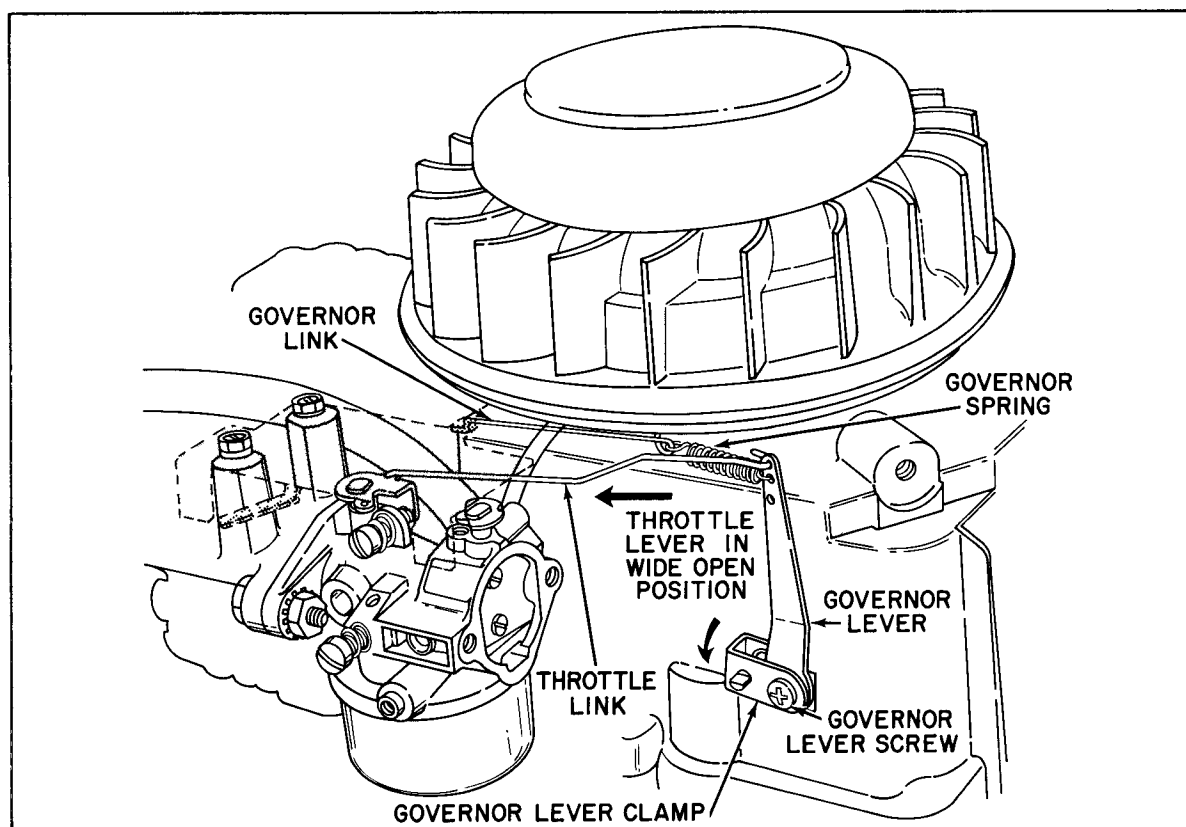
2. Turn counterclockwise  $1\frac{1}{2}$  turns to open. After engine is started, make final adjustments by turning screw and eighth of a turn at a time, allowing time between turns for engine to react.

### IDLE ADJUSTMENTS

Set throttle control lever in idle position.

3. Idle speed can be adjusted by turning screw "C". After making speed adjustment, make final idle adjustment by turning screw "B".

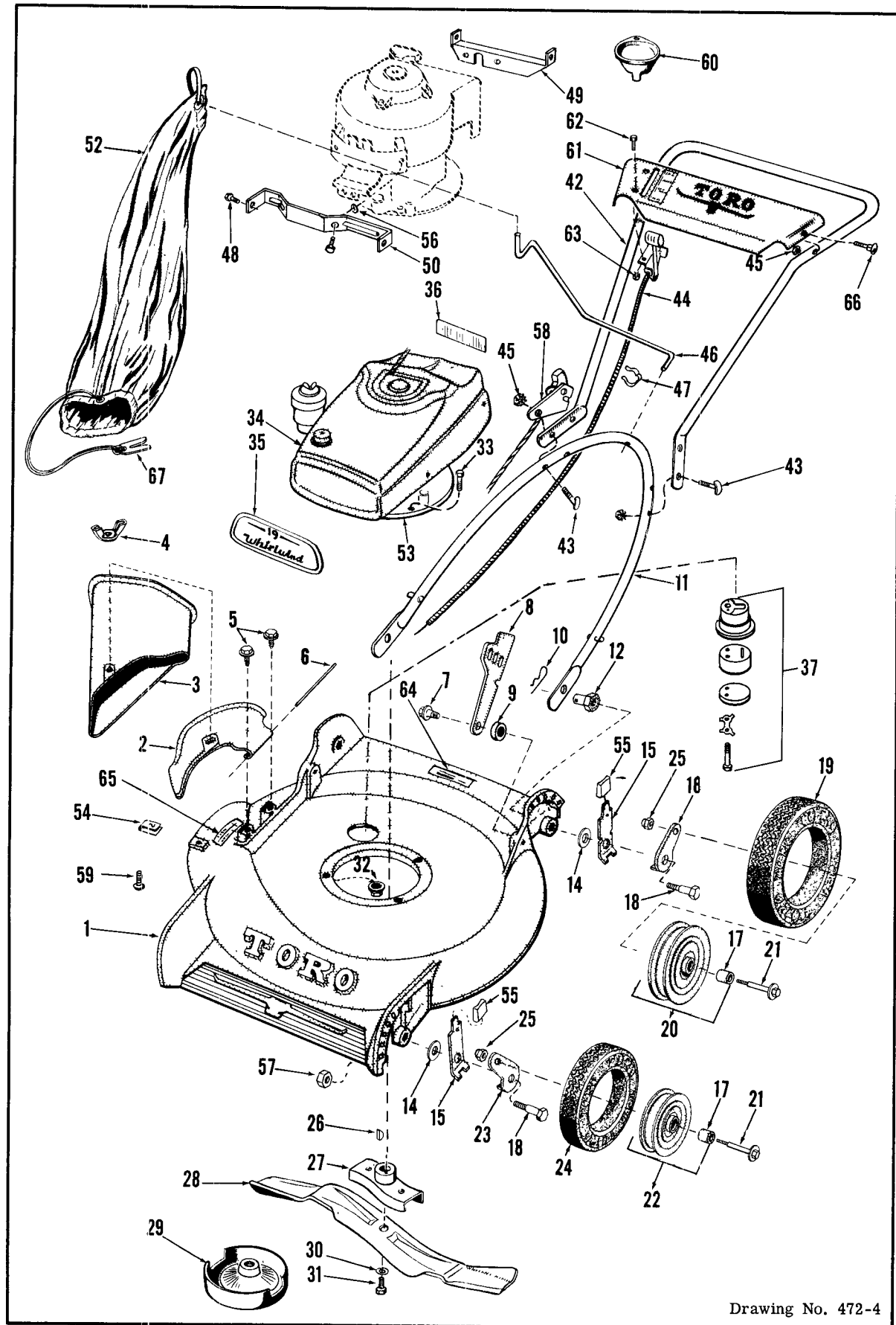
## MECHANICAL GOVERNOR ADJUSTMENTS



1. Loosen governor lever screw.
2. Hold throttle lever in wide open position.

3. Rotate governor lever clamp as far as possible in direction shown by arrow.
4. Tighten governor lever screw.

# 19" and 21" H.P. MOWER DRAWING



Drawing No. 472-4

## 19" and 21" H.P. PARTS LIST

Ref. No.	Part No.	Description	No. Used
1	3-7285	Main Frame 19"	1
*	3-7284	Main Frame 21" H. P.	1
2	3-2574	Deflector	1
3	3-2572	Bag Attachment	1
4	32103-14	Wing Nut	1
5	32104-75	Screw	2
6	3-2644	Hinge Pin	1
7	3-1846	Screw, Shoulder	2
8	3-2656	Handle Latch	2
9	3-3287	Spacer	2
10	3290-255	Hairpin Cotter	2
11	3-9430	Lower Handle	1
12	3-6482	Nut, Handle Pivot	2
14	3-5956	Pivot Washer	4
15	2-5819	Arm Assy. w/Knob (Ref. #55)	4
16	3-2634	Pivot Arm, Left Rear & Right Front	2
17	3-2664	Bushing	4
18	3-0655	Pivot Screw	4
19	4-2600	Tire, Rear Wheel 8"	2
20	3-2563	Wheel, Rear 8"w/Bushing	2
21	3-2652	Wheel Bolt	4
22	3-2564	Wheel, Front 6" w/Bushing	2
23	3-2635	Pivot Arm, Right Rear & Left Front	2
24	4-2610	Tire, Front Wheel 6"	2
25	3296-5	Stop Nut	4
26	3257-3	Key	1
27	3-9810	Retainer Blade	1
28	3-6287	Blade 19"	1
28	3-6286	Blade 21" H. P.	1
29	3-6292	Anti-Scalp Dish	1
30	3253-26	Lockwasher	1
31	3-5246	Screw, Special	1
32	32149-1	Nut, Keps	3

Ref. No.	Part No.	Description	No. Used
33	322-7	Screw, Engine Mounting	3
34	3-6071	Engine Shroud	1
35	3-7312	Decal, Front - 19"	1
*	3-7314	Decal, Front - 21"	1
36	3-6157	Decal, Rear - 19" & 21"	1
37	2-9319	Muffler, Assy.	1
42	3-6167	Handle, Upper	1
43	3-2654	Screw, Curved Head (Impulse)	4
*	3-4811	Screw, Curved Head (Recoil)	4
44	3-6173	Throttle Control Assembly	1
45	32149-2	Stop Nut	6
46	3-0690	Bag Hanger	1
47	218-75	Clip	1
48	32104-75	Screw, Self Tap	4
49	3-7237	Tank Shroud Bracket	1
50	3-7238	Front Shroud Bracket	1
52	81053	Bag - Set of 3	1
53	221-234	Engine Recoil Start 19"	1
*	221-235	Engine Spin Start 19"	1
*	221-235	Engine Spin Start 21"	1
54	3290-199	Speed Nut "U" Type	1
55	3-0650	Knob	4
56	3-1034	Washer	2
57	32146-5	Stop Nut	2
58	3-9450	Remote Recoil Plate Assy.	1
59	3290-133	Screw	1
60	3-7291	Funnel	1
61	3-6172	Escutcheon Plate (Recoil)	1
*	3-6174	Escutcheon Plate (Impulse)	1
62	3290-237	Screw	2
63	32149-7	Nut	2
64	3-5587	Serial Plate	1
65	3-4692	Decal, Safety Std.	1
66	3229-2	Carriage Bolt	2
67	3-2781	Cord Clasp	1

\*Not Illustrated

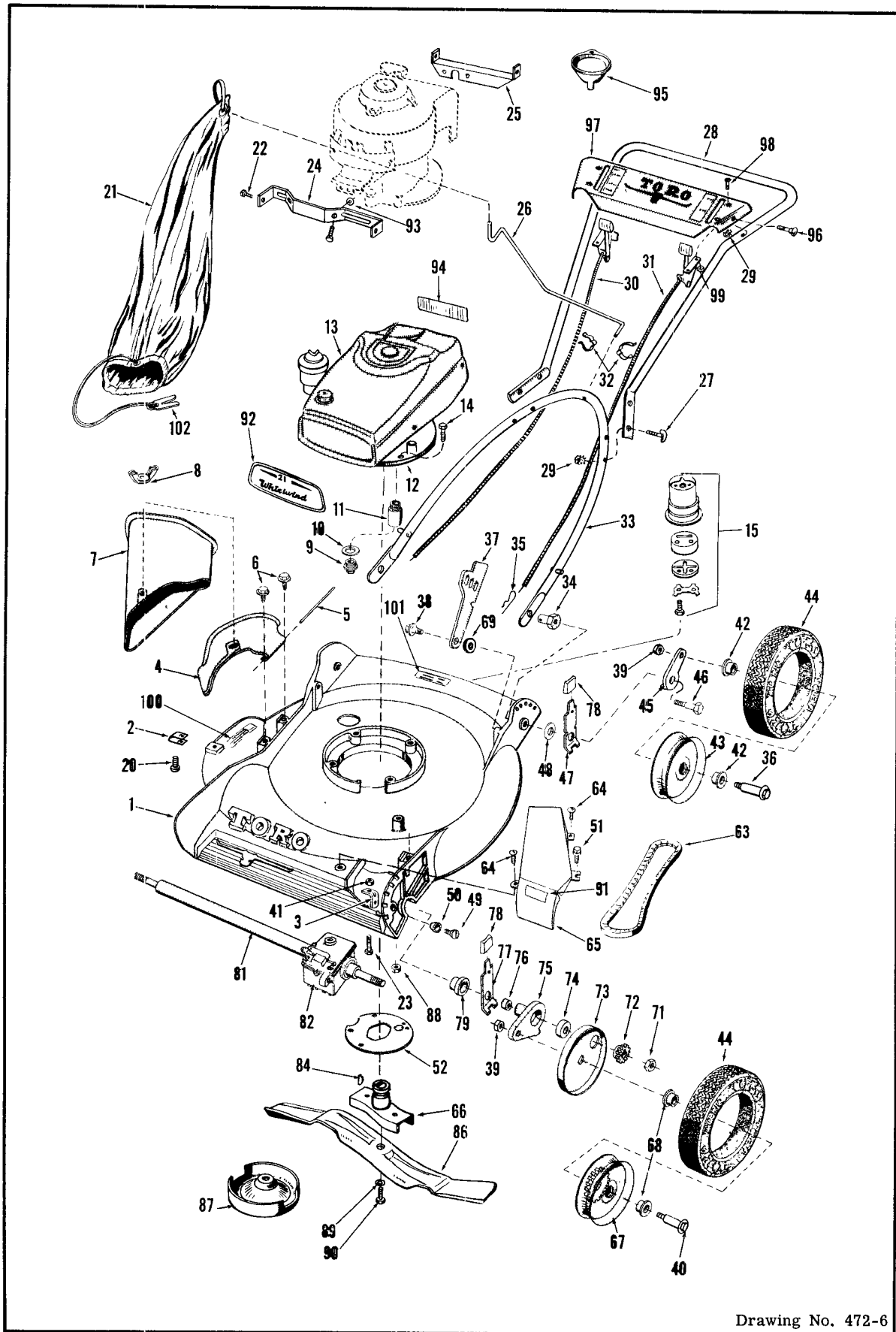
INSIST ON GENUINE TORO PARTS

### IMPORTANT ORDERING INSTRUCTIONS

Repair parts are available from your TORO distributor or service dealer. To insure getting correct parts without delay, please furnish the following information:

1. Serial number of your product as shown on the name plate.
2. Part number, description and quantity of each part required.
3. Name and address where parts are to be shipped.
4. Do not order by reference number; use part number only.

# 21" S.P. MOWER DRAWING



Drawing No. 472-6

## 21" S.P. PARTS LIST

Ref. No.	Part No.	Description	No. Used
1	3-7632	Main Frame	1
2	3290-199	Speed Nut	1
3	3-7278	Adj. Bracket	1
4	3-2574	Deflector	1
5	3-2644	Hinge Pin	1
6	32104-75	Screw	2
7	3-2572	Bag Attachment	1
8	32103-14	Wing Nut	1
9 +	27244	Oil Drain	1
10 +	27245	Gasket, Oil Drain	1
11	3-0761	Extension, Oil Drain	1
12	221-245	Engine	1
13	3-6071	Engine Shroud	1
14	322-13	Screw	3
15	2-9329	Muffler Assy.	1
20	3290-133	Screw	1
21	81053	Bags -Set of 3	1
22	32104-75	Screw, Self Tap	4
23	3-7281	Screw	1
24	3-7238	Bracket, Front Shroud	1
25	3-7237	Shroud Bracket	1
26	3-0690	Hanger, Bag	1
27	3-2654	Screw	4
28	3-6167	Handle Assy., Upper	1
29	32149-2	Nut	6
30	3-6173	Throttle Control Assy.	1
31	3-6176	Clutch Control Assy.	1
32	218-75	Clip	2
33	3-9430	Handle Assy., Lower	1
34	3-6482	Nut, Handle Pivot	2
35	3290-255	Hairpin Cotter	2
36	3-2652	Wheel Bolt	2
37	3-2656	Handle Latch	2
38	3-1846	Screw, Shoulder	2
39	3296-5	Nut, Stop	4
40	3-5117	Wheel Bolt	2
41	3218-1	Nut	1
42	3-5116	Bushing	4
43	3-7350	Rear Wheel w/bushing Ref. 42	2
44	4-2600	Tire	4
45	3-2634	Pivot Arm, Left Rear	1
*	3-2635	Pivot Arm, Right Rear	1
46	3-0655	Pivot Screw	2
47	2-5819	Arm Assy., Rear Wheel, Incl. (1) Ref. 78	2

Ref. No.	Part No.	Description	No. Used
48	3-5956	Pivot Washer	2
49	32108-20	Screw	1
50	3255-12	Lockwasher	1
51	32104-31	Screw	1
52	3-7626	Grass Guard	1
63	3-7274	Belt	1
64	32104-76	Screw	2
65	3-7624	Belt Guard	1
66	3-7286	Retainer, Blade	1
67	3-7570	Front Wheel w/Gear and Bushing (Ref. #68)	2
68	3-5234	Bushing, Front Wheel	4
69	3-3287	Spacer	2
71	3296-5	Nut	2
72	3-0738	Gear	2
73	3-5235	Wheel Cover	2
74	251-183	Bearing	2
75	2-6369	Pivot Arm, Left	2
*	2-6359	Pivot Arm, Right	2
76	256-1	Bushing	2
77	2-3219	Arm Assy., Front Wheel	2
78	3-0650	Knob	4
79	3-2646	End Cap	2
81	3-0720	Drive Shaft	1
82	3-1229	Gear Case Assy., Incl. Ref. 81	1
84	3257-3	Key	1
86	3-6286	Blade	1
87	3-6292	Anti-Scalp Dish	1
88	32149-1	Nut	3
89	3253-26	Lockwasher	1
90	3-5246	Screw, Special	1
91	3-2645	Decal, Belt Guard	1
92	3-7314	Decal, Front	1
93	3-1034	Washer, Blower Housing	2
94	3-6157	Decal, Rear	1
95	3-7291	Funnel	1
96	3229-2	Carriage Bolt	2
97	3-6175	Escutcheon Plate	1
98	3290-237	Screw	4
99	32149-7	Nut	4
100	3-4692	Decal, Safety Stds.	1
101	3-5587	Plate, Serial No.	1
102	3-2781	Cord Clasp	1

\* Not Illustrated

+ Obtain from your Lauson Dealer





# ENGINE PARTS LIST (All Models)

Ref. No.	Part No.	Description	No. Used
1	30084	Cylinder Assy.(Incl.Nos.2 & 4)	1
2	26727	Pin, Dowel	2
3	27183	Washer, Fibre	1
4	*29183	Seal, Oil	1
5	29314A	Valve, Intake(Std.)(Incl. Nos. 8, 9, 10)(Use w/Models TE3-20043C, TE3-20044C and TE3-20045C only)	1
5	29316A	Valve, Intake(1/32" Oversize)(Incl. Nos. 8, 9, 10)(Use with Models TE3-20043C, TE3-20044C & TE3-20045C only)	1
5A	29314	Valve, Intake(Std.)(Use with Models TE3-20043, TE3-20044A & TE3-20045A only)	1
5A	29316	Valve, Intake(1/32"O'size)(Use w/Models TE3-20043, TE3-20044A & TE3-20045A only)	1
6	29313A	Valve, Exhaust (Standard) (Incl. Nos. 8, 9, & 10) (Use with Models TE3-20043C, TE3-20044C & TE3-20045C only.)	1
6	29315A	Valve, Exhaust (1/32" over-size) (Incl. Nos. 8, 9, & 10) (Use with models TE3-20043C, TE3-20044C & TE3-20045C only.)	1
6A	29313	Valve, Exhaust (Standard) (Use with models TE3-20043, TE3-20044A & TE3-20045A only.)	1
6A	29315	Valve, Exhst. (1/32" o'size)(Use w/Models TE3-20043, TE3-20044A & TE3-20045A only)	1
7	20794	Pin, Valve spring retaining (Use with models TE3-20043, TE3-20044A & TE3-20045A only.)	2
8	31671	Cap, Upper Valve Spring (Use with models TE3-20043C, TE3-20044C & TE3-20045C only.)	2
8	26957	Cap, Upper valve spring (Use with models TE3-20043, TE3-20044A & TE3-20045A only.)	2
9	31672	Spring, Valve (Use with models TE3-20043C, TE20044C & TE3-20045C only.)	2
9	24772	Spring, Valve (Use with models TE3-20043, TE3-20044A & TE20045A only.)	2
10	31673	Cap, Lower valve spring (Use with models TE3-20043C, TE3-20044C & TE3-20045C only.)	2
10	21043	Cap, Lower Valve Spring (Use w/Models TE3-20043, TE3-20044A & TE3-20045A only)	2
11	30961	Crankshaft Assy. (Incl. Nos. 12 & 13) (Use with Models TE3-20043, TE3-20043C, TE3-20044A & TE3-20044C only)	1
11	31439	Crankshaft Assy. (Incl. Nos. 12 & 13) (Use w/Models TE3-20045A & TE3-20045C only)	1
12	29783	Pin, Crankshaft gear	1
13	27613	Gear, Crankshaft	1
14	31304	Piston & Pin Assy. (Standard) (Incl. 2 of No. 16)	1
14	31305	Piston & Pin Assy. (.010 Oversize) (Incl. 2 of No. 16)	1
14	31306	Piston & Pin Assy. (.020 Oversize) (Incl. 2 of No. 16)	1
15	27565	Ring Set, Piston (Standard)	1

Ref. No.	Part No.	Description	No. Used
15	27566	Ring Set, Piston (.010 Over-size)	1
15	27567	Ring Set, Piston (.020 Over-size)	1
16	20381	Ring, Piston pin retaining	2
17	30963	Rod Assy., Connecting (Incl. Nos. 18, 19, & 20)	1
18	26706	Bolt, Connecting rod	2
19	20747	Washer, Connecting rod	2
20	27573	Nut, Lock	2
21	27241	Lifter, Valve	2
22	31316	Camshaft	1
23	29914	Pump Assy., Oil	1
24	*26750	Gasket, Mounting flange	1
25	30784A	Flange Assembly, Mounting (Incl. Nos. 26, 27, 28 & 32)	1
26	*26208	Seal, Oil	1
27	*28833	Gasket, Drain plug	1
28	30572	Plug, Oil Drain (Use w/Models TE3-20043, TE3-20043C, TE3-20044A & TE3-20044C only)	1
28	27244	Plug, Oil drain (Use with models TE3-20045A, & TE3-20045C only.)	1
30	650488	Screw, Hex hd.	6
31	27625	Plug, Oil filler	1
32	30574	Shaft, Mechanical governor	1
33	30591	Gear Assy., Governor	1
34	29193	Ring, Retaining	2
35	30588A	Spool, Governor	1
36	31335	Clamp, Governor lever	1
37	30589	Rod, Governor (Incl. No. 38)	1
38	28277	Washer, Flat	1
39	31383	Lever, Governor	1
41	31404	Cleaner Assembly, Air (Incl. No. 55)	1
42	27247	Key, Flywheel	1
43	28597	Screw	1
45	650489	Screw	2
46	*29953A	Gasket, Cylinder head	1
47	30579	Head, Cylinder	1
48	26073	Washer	5
49	6021	Screw	5
50	6023	Screw	3
51	21943	Plug, Spark (Champion J-8 or equiv.)	1
52	*31619	Gasket, Breather	1
53	31337	Breather Assy. (Incl. Nos. 52 & 84)	1
55	31408	Element, Air cleaner	1
56	590378	Starter, Impulse (Use with models TE3-20044A, TE3-20044C, TE3-20045A & TE3-20045C only.)	1
56A	590381	Starter, Rewind (Use with models TE3-20043, & TE3-20043C only.)	1
57	650128	Screw	2
58	30002	Decal, Air Cleaner	1
59	*30188	Gasket, Intake pipe	1
60	31384	Pipe, Intake	1
61	*29673	Gasket, Oil filler	1
62	650176	Screw	2
63	30593	Clip, Magneto wire	1
65	30200	Screw	2
67	31407	Control Assy., Speed	1
69	31385	Link, Throttle to Governor	1
71	31387	Link, Governor spring	1
73	31386	Spring, Governor	1
75	650549	Screw	1
77	31342	Spring, Compression	1
78	31388	Wire, Ground	1
79	30687	Elbow, Air cleaner	1

\*Gasket Set

(Continued Next Page)

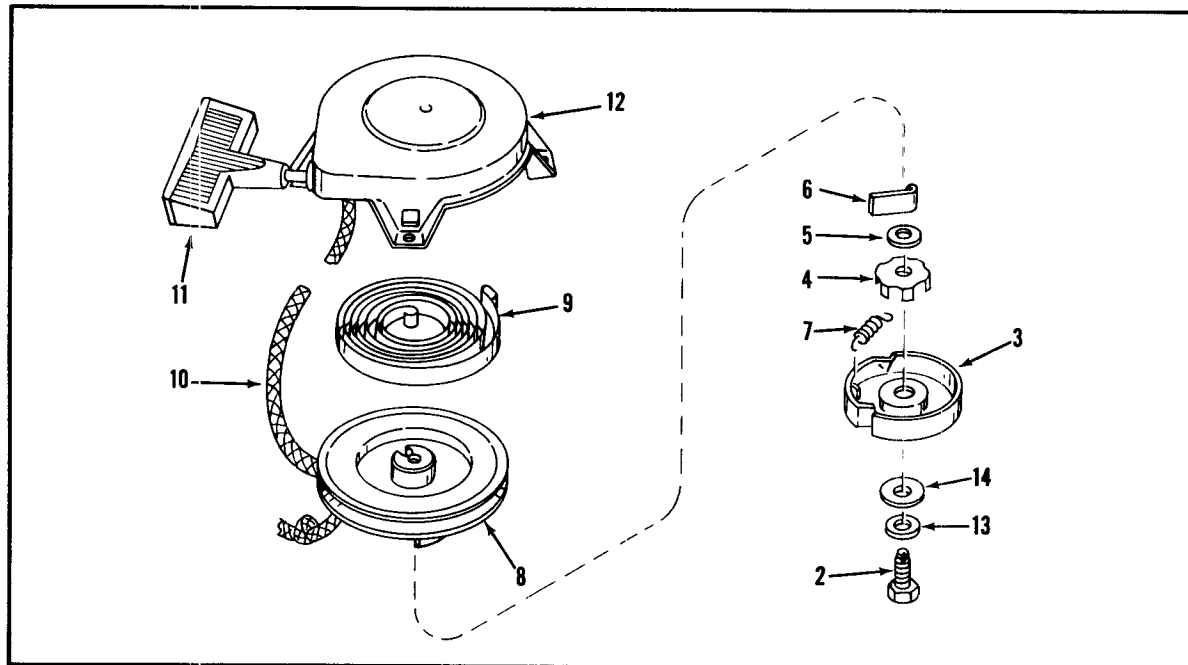
## ENGINE PARTS LIST (All Models) - Continued

Ref. No.	Part No.	Description	No. Used
80	31284	Hub & Screen	1
81	30370	Screw	2
82	8303	Lockwasher	1
83	*26756	Gasket, Carburetor	1
84	31410	Element, Breather	1
85	6201	Screw	2
87	29752	Nut	2
88	*27272	Gasket, Cleaner bracket	1
89	30418	Bracket, Elbow reinforcing	1
90	29511	Screw	1
91	30110	Screw	1
93	650520	Screw	1
94	**3-6177	Bracket, Shroud	1
95	31400	Line, Fuel	1
96	27793	Clip, Conduit	1
97	28942	Screw	1
98	31402	Housing, Blower (Use with models TE3-20043 & TE3-20043C only.)	1
98	31722	Housing, Blower (Use with models TE3-20044A, TE3-20044C, TE3-20045A & TE3-20045C only.)	1
99	650561	Screw	2
100	**3-6156	Bracket, Shroud	1
101	31401	Tank, Fuel (Incl. No. 102)	1
102	27799	Cap, Fuel filler	1

Ref. No.	Part No.	Description	No. Used
103	29290	Strap, Fuel tank	1
105	29774	Line, Fuel	2
106	650490	Washer, Belleville	1
107	650491	Nut, Flywheel	1
108	**3-9450	Plate, Rewind rope (Use with models TE-20043, & TE3-20043C only.)	1
109	29716	Screw	4
110	*30081	Gasket, Muffler	1
111	*27165	Gasket, Air cleaner to elbow	1
112	31406	Bolt, Air cleaner	1
113	30595	Decal, Ezee Start (Use with models TE3-20043, & TE3-20043C only.)	1
114	9577	Nut, Wing	1
115	**3-1034	Washer, Plain flat	2
116	650168	Flatwasher (Use with models TE3-20044A, TE3-20044C, TE3-20045A & TE3-20045C only.)	4
118	610118	Cover, Spark plug	1
119	650548	Screw	1
121	631003	Carburetor	1
122	610693	Magneto, Tecumseh	1
123	31409A	Gasket Set (Incl. items marked *)	1

\*\* Order from Toro Dealer.

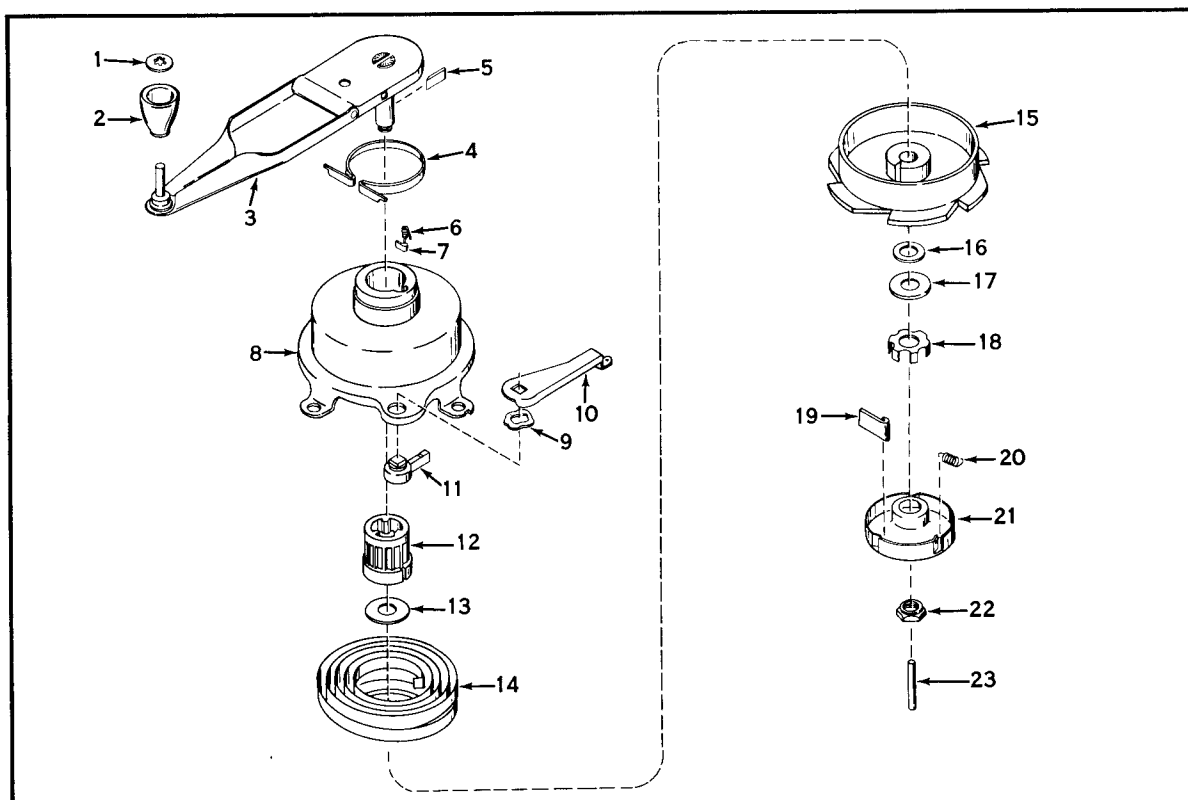
## REWIND STARTER No. 590381



Ref. No.	Part No.	Description	No. Used
2	29728	Screw, Retainer	1
3	31280	Retainer	1
4	28774	Brake	1
5	31281	Washer, Thrust	1
6	590148	Dog, Starter	1
7	31277	Spring, Retainer	1
8	31282	Pulley Assy.	1

Ref. No.	Part No.	Description	No. Used
9	31278	Spring, Rewind	1
10	28528	Rope, Starter	1
11	590288	Handle, Starter	1
12	31283	Housing Assy., Starter	1
13	28780	Washer, Brake	1
14	31289	Washer, Spacer	1

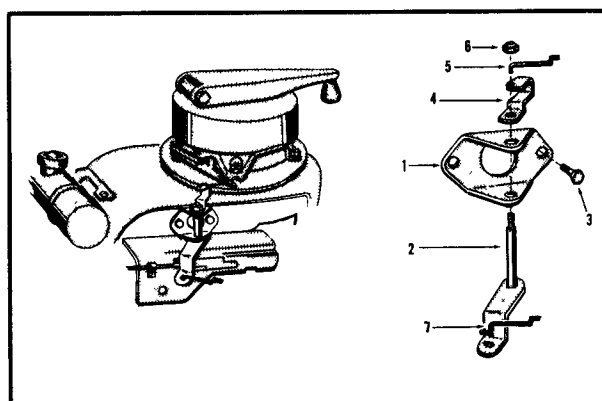
## IMPULSE STARTER No. 590378



Ref. No.	Part No.	Description	No. Used
1	29227	Fastener, Handle	1
2	29228	Knob, Starter Handle	1
3	31458	Handle Assembly, Starter (Incl. Nos. 4 and 5)	1
4	29935	Band, Brake	1
5	29936	Dog, Wind	1
6	30987	Spring, Lock Dog	1
7	29937	Dog, Lock	1
8	31421	Housing & Release Assy., Offset (Incl. Nos. 9, 10 & 11)	1
9	31412	Washer, Wave	1
10	31422	Release Lever, Offset	1
11	31419	Release Assembly	1

Ref. No.	Part No.	Description	No. Used
12	31455	Bearing, Center	1
13	31456	Washer, Spacer	1
14	31413	Spring, Power	1
15	31457	Hub, Spring	1
16	31418	Washer, Shim (Use as req'd.)	1
17	29734	Washer, Thrust	1
18	29717	Brake	1
19	590148	Dog, Starter	3
20	29940	Spring, Retainer	1
21	29942	Retainer	1
22	31417	Nut, Shoulder	1
23	29736	Pin, Centering	1

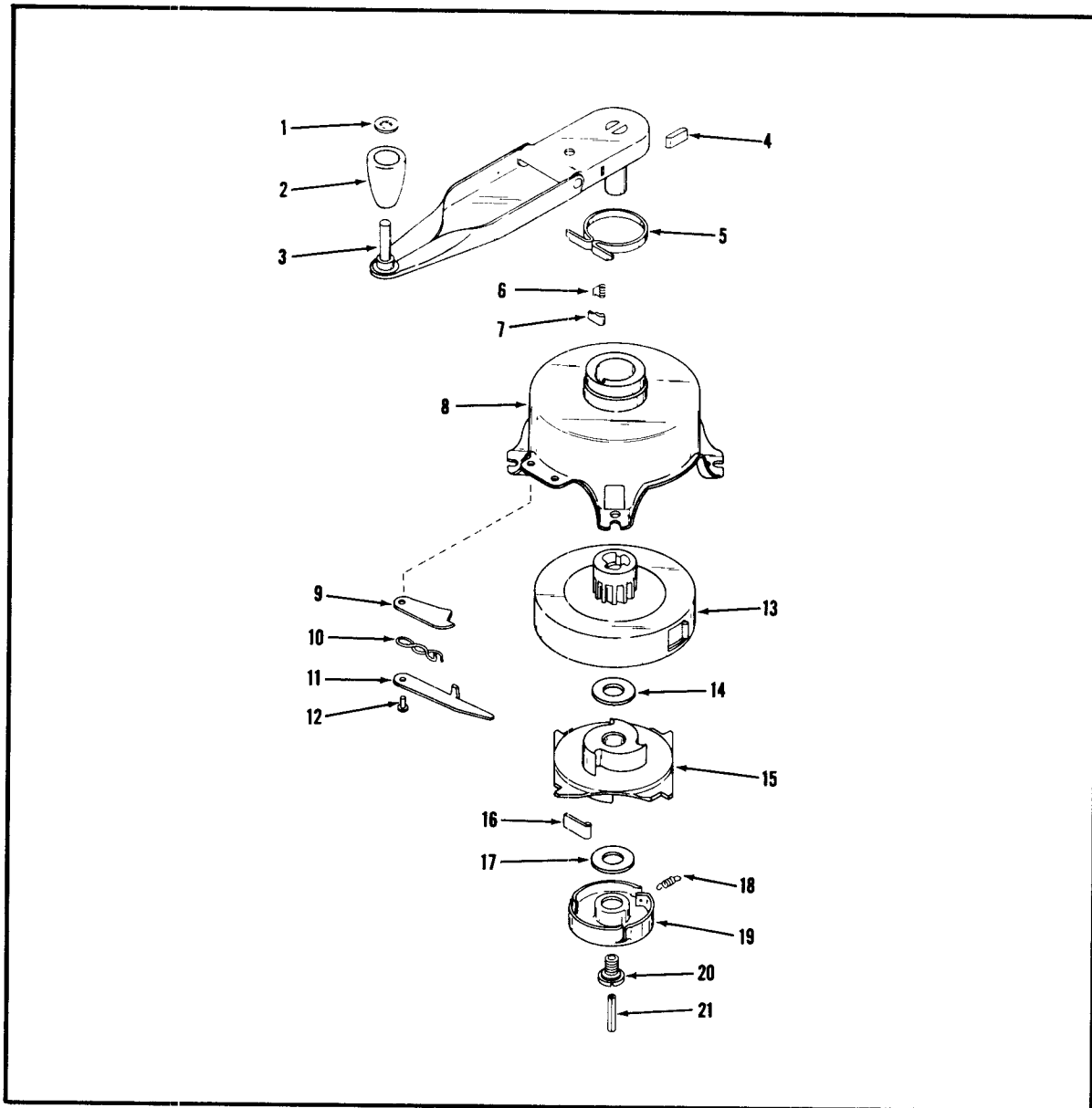
## REMOTE CONTROL LINKAGE



Ref. No.	Part No.	Description	No. Used
1	3-4368	Attach Bracket	1
2	3-5613	Lever	1
3	32104-63	Screw	2
4	3-5617	Crank	1
5	3-5653	Link	1
6	3296-3	Nut	1
7	3-5773	Link	1

INSIST ON GENUINE TORO PARTS

# STARTER No. 29932

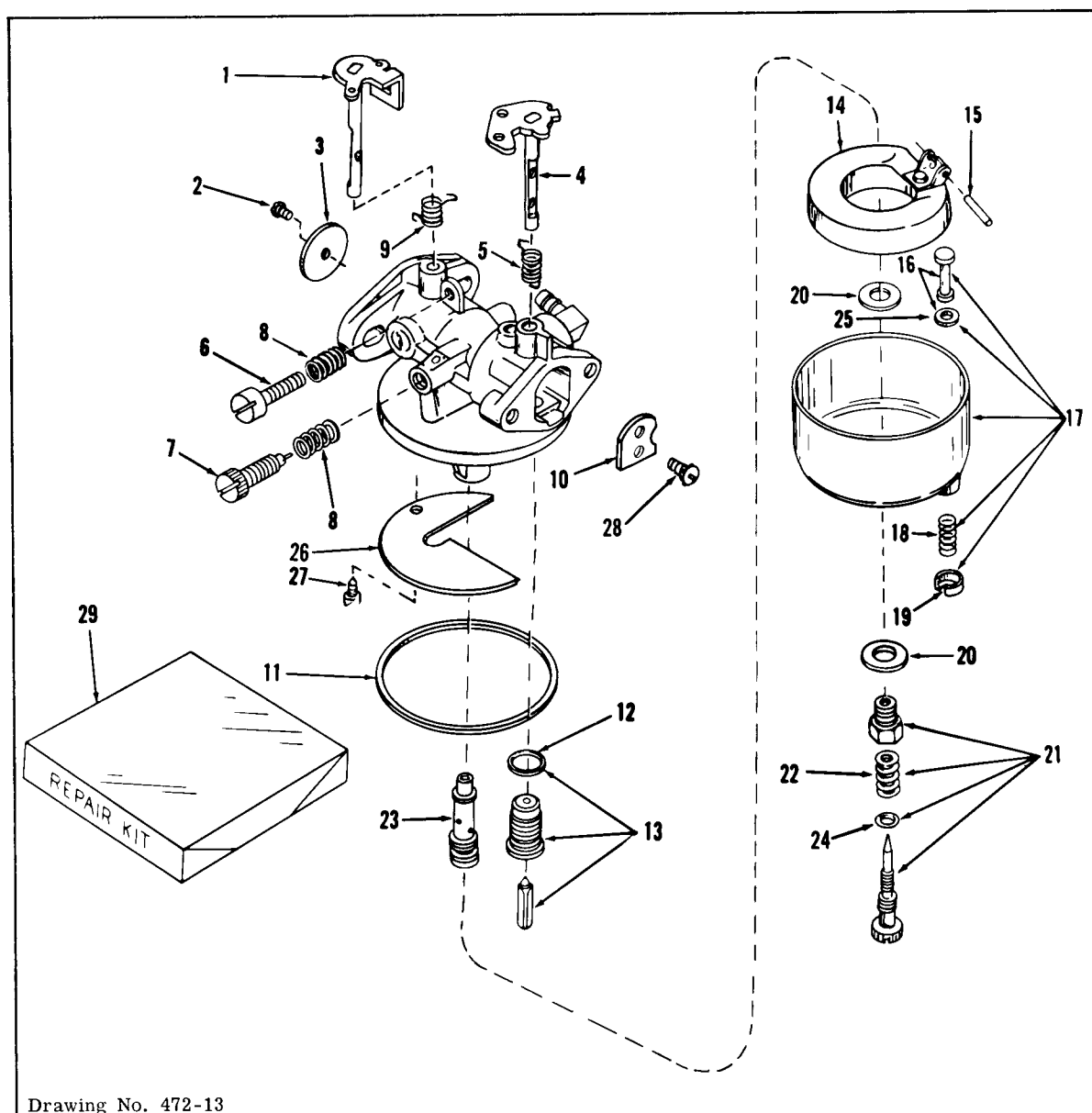


Ref. No.	Part No.	Description	No. Used
1	29227	Fastener, Handle	1
2	29228	Knob, Starter Handle	1
3	29950	Handle Assembly	1
4	29936	Dog, Wind	1
5	29935	Band, Brake	1
6	29938	Spring, Lock Dog	1
7	29937	Dog, Lock	1
8	29949	Housing Assembly, Starter	1
9	29944	Lever, Release	1
10	29943	Spring, Release Lever	1
11	29945	Lever, Trip	1

Ref. No.	Part No.	Description	No. Used
12	29946	Stud, Release Lever	1
13	29948	Spring and Keeper	1
14	29941	Washer, Bearing	1
15	29947	Hub and Cover	1
16	590148	Dog, Starter	3
17	29734	Washer, Thrust	1
18	29940	Spring, Retainer	1
19	29942	Retainer	1
20	29733	Screw, Shoulder (Left Hand)	1
21	29736	Pin, Centering	1

This Starter used on the following models: 19" Impulse Model No. 18123-101 thru 18123-3075  
 21" H. P. Impulse Model No. 19123-101 thru 19123-8100  
 21" S. P. Impulse Model No. 20123-101 thru 20123-2095

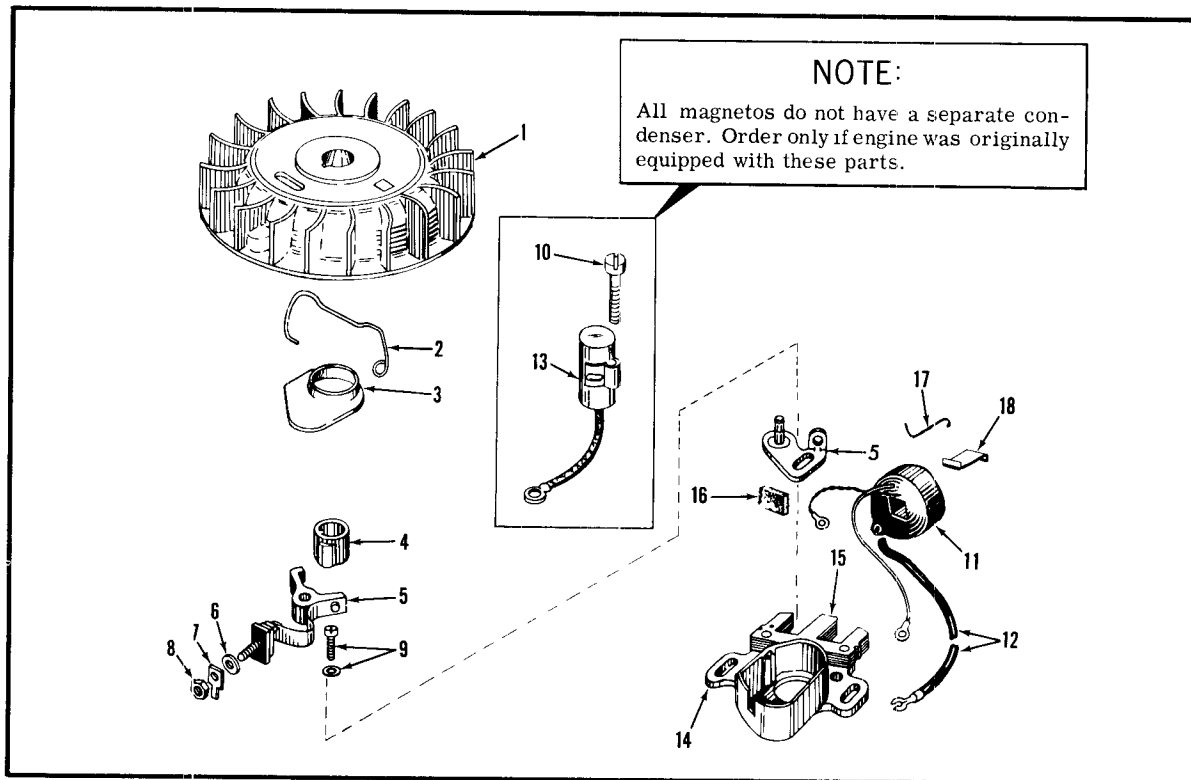
# CARBURETOR No. 631003



Ref. No.	Part No.	Description	No. Used
1	31350	Shaft and Lever, Throttle	1
2	30357	Screw	1
3	30726	Shutter, Throttle	1
4	31374	Shaft and Lever, Choke	1
5	31375	Spring, Choke Return	1
6	630605	Screw, Throttle Adjusting	1
7	*27112	Needle, Idle	1
8	27114	Spring, Idle	2
9	31352	Spring, Throttle Return	1
10	30927	Shutter, Choke	1
11	*30356	Gasket, Body-to-Bowl	1
12	27108	Gasket, Float Valve Seat	1
13	*29154	Valve, Seat and Gasket, Matched Float	1
14	30354	Float Assembly	1
15	*27106	Shaft, Float	1

Ref. No.	Part No.	Description	No. Used
16	27136	Stem & Gasket Assy., Bowl Drain	1
17	30350	Bowl & Drain Assy., Fuel	1
18	27137	Spring, Bowl Drain	1
19	27138	Retainer, Bowl Drain Stem	1
20	*27110	Gasket, Bowl-to-Body	2
21	*28945	Needle Assy., Power Adj.	1
22	630786	Spring, Power Needle	1
23	30355	Nozzle, Main	1
24	27544	"O" Ring	1
25	27554	Gasket, Bowl Drain	1
26	30815	Baffle, Bowl	1
27	30817	Screw	1
28	630606	Screw	2
29	30359	Repair Kit (Incl. Items Marked *)	1

# MAGNETO No. 610693



Ref. No.	Part No.	Description	No. Used
1	31331	Flywheel	1
2	30551	Spring, Breaker Box Dust Cover	1
3	30550	Cover, Breaker Box Dust	1
4	30552	Cam, Breaker	1
5	30547	Contact Assembly, Breaker	1
6	610385	Washer, Terminal	1
7	30843	Tab, Ground Terminal	1
8	610408	Nut, Terminal	1
9	29181	Screw & Washer, Breaker	1
10	610593	Screw, Condenser	1

Ref. No.	Part No.	Description	No. Used
11	*30560	Coil Assy., (Incl. Ref. Nos. 12 & 18 & any other parts req'd for correct replacement.)	1
12	30554	Wire, Lead	1
13	30548	Condenser	1
14	30545	Core and Plate	1
15	30561	Stator Assy., (Incl. Ref. Nos. 5 thru 14, 16, 17 & 18)	1
16	30549	Felt, Cam Wiper	1
17	31311	Clip, Coil Locking	1
18	29629	Spring, Coil Wedge	1

\* Some replacement coils do not require condenser. Specific instructions included with replacement coil.

## Warranty

The Manufacturer warrants each new piece of equipment sold to be free of defects in material and workmanship. For one year from the purchase date of consumer line equipment or 45 days if sold for commercial use, Toro Manufacturing Corporation will repair or replace for the original purchaser, free of charge, through any Authorized Service Dealer, any part or parts found at our factory in Minneapolis, Minnesota, to be defective under normal use and service. All institutional equipment is warranted for ninety (90) days from the purchase date.

This Warranty does not obligate the Manufacturer to bear the cost of transportation charges in con-

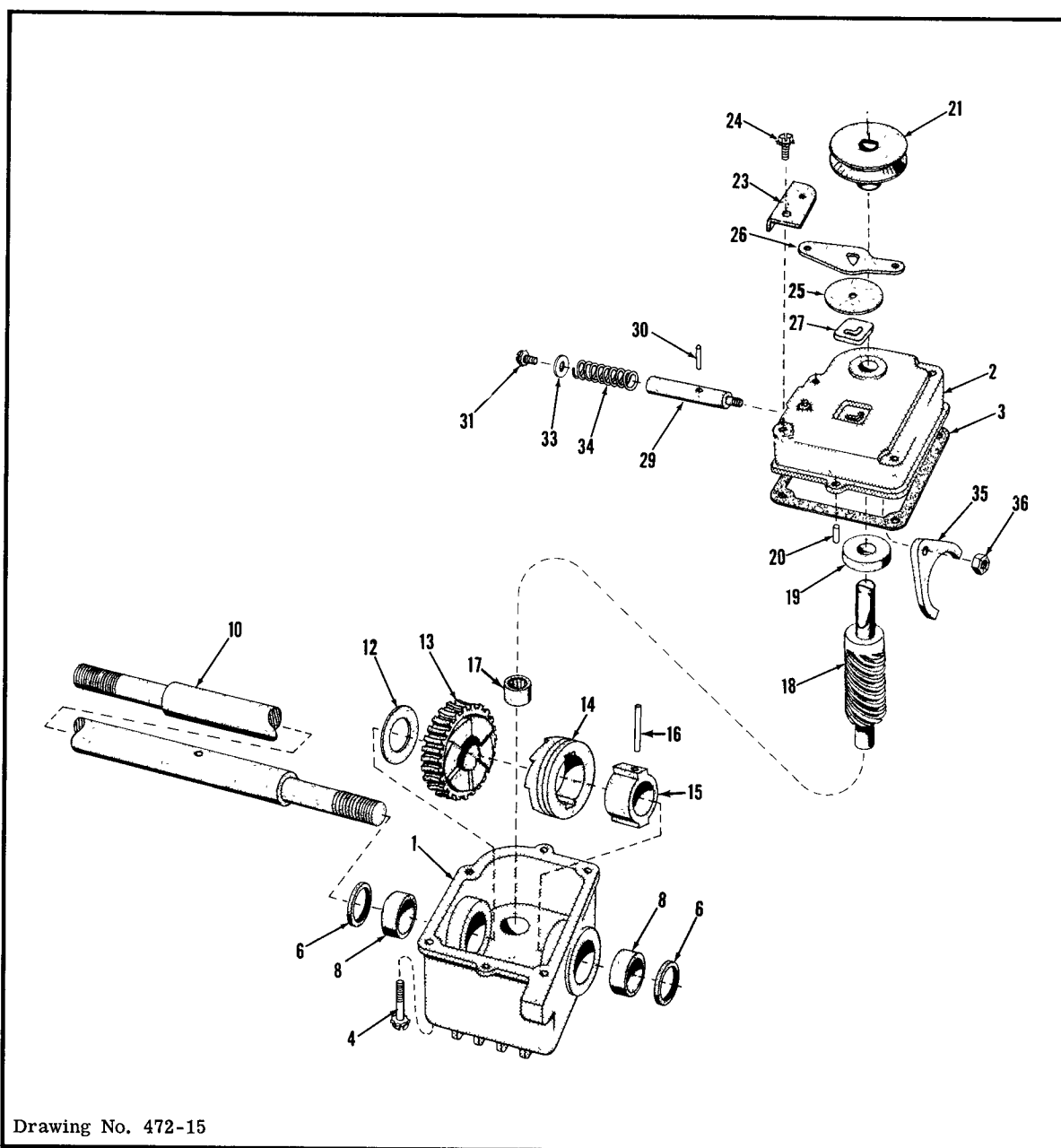
nection with the replacement or repair of defective parts -- nor shall it apply to a machine upon which repairs or alterations have been made, unless authorized by the manufacturer.

This Warranty does not include nor cover standard accessories produced by other manufacturers. Such accessories have separate warranties by their respective manufacturers . . . and repair or exchange will be made on the basis of such warranties, and the policies authorized by them shall be adhered to.

This Warranty is in lieu of all other warranties expressed or implied.

# GEAR CASE ASSEMBLY

( 21" S.P. )



Drawing No. 472-15

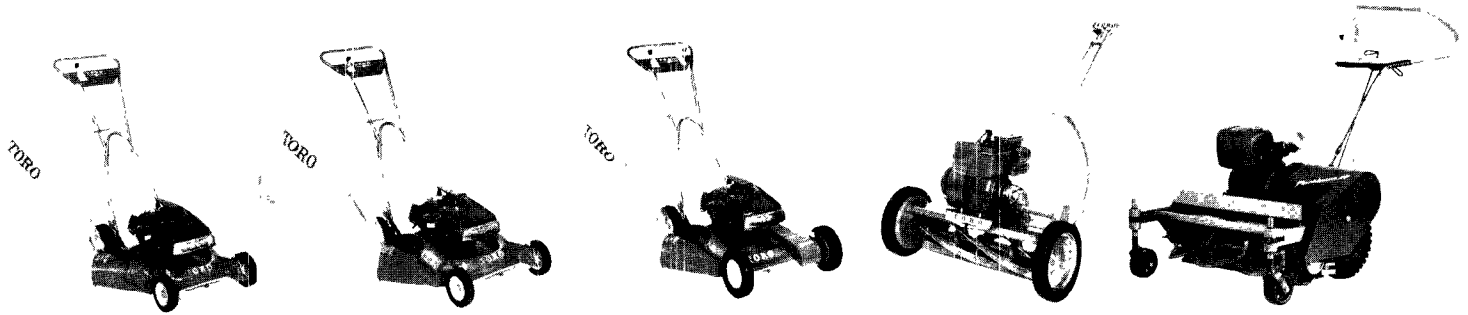
Ref. No.	Part No.	Description	No. Used
1	2-9489	Gear Case ( Ref. #8 & 17 )	1
2	3-6271	Cover, Gear Case	1
3	3-0734	Gasket	1
4	32140-38	Screw, Sems	4
6	253-86	Oil Seal	2
8	256-110	Bushing	2
10	3-0720	Shaft, Drive	1
12	3-0724	Washer, Thrust	1
13	3-0723	Worm Gear	1
14	3-0722	Clutch Jaw	1
15	3-0721	Sleeve	1
16	32121-40	Pin	1
17	252-51	Bearing	1
18	3-4738	Worm Shaft	1
19	251-144	Bearing	1

Ref. No.	Part No.	Description	No. Used
20	32121-1	Pin	2
21	3-7275	Pulley	1
23	3-2655	Shifter Arm Guide	1
24	32140-39	Screw, Sems	1
25	3-2615	Trans. Dust Cap	1
26	3-0732	Shifter Arm	1
27	3-0681	Latch Plate	1
29	3-2662	Shifter Rod	1
30	32121-23	Pin, In Shift Rod	1
31	32140-40	Screw, Sems	1
33	3256-14	Washer	1
34	3-0731	Spring	1
35	3-0730	Shifter Fork	1
36	3296-12	Nut	1

# TORO POWER MOWERS

Toro power mowers and Power Handle implements are designed and built to give years of precision performance . . . to make them "the best you can buy." And there's over 40 years of manufacturing experience to back them up. One of Toro's most important objectives — and one which has

helped make Toro the world's largest manufacturer of power mowers — is to provide the customer with complete local service and parts. This Toro has done through an extensive chain of service dealers, factory-trained to give you the most careful, competent care for your Toro work-saver.



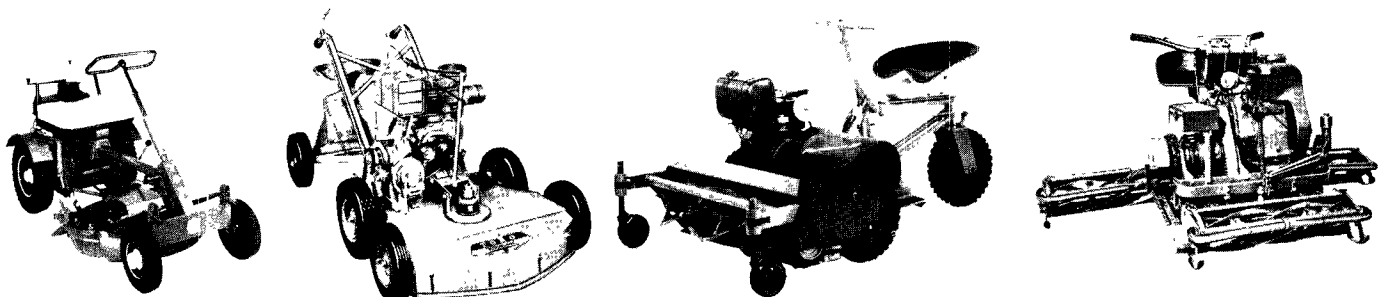
19" WHIRLWIND

21" HAND PROPELLED WHIRLWIND

21" POW-R-DRIVE WHIRLWIND

21" SPORTLAWN

25" PARKLAWN

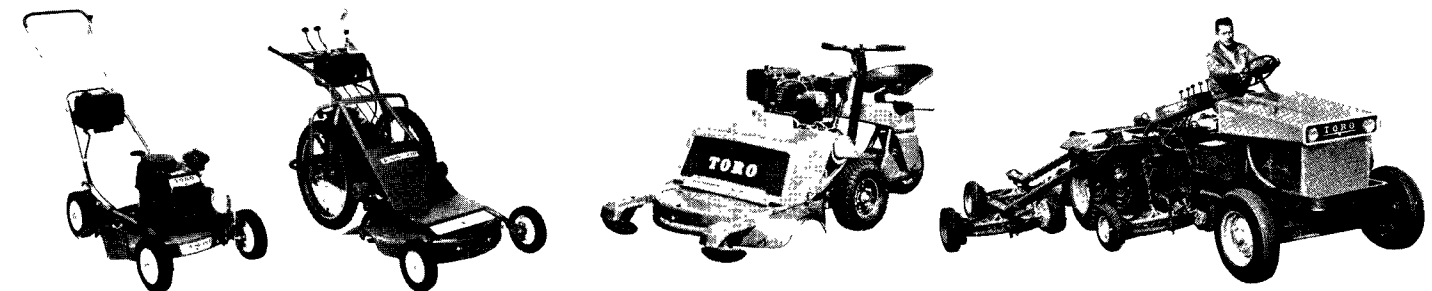


BIG RED

31" GRASSKING

30" PARKLAWN

76" PROFESSIONAL



21" HEVI-DUTY WHIRLWIND HAND-PROPELLED

25" HEVI-DUTY WHIRLWIND

32" SELF-PROPELLED WHIRLWIND

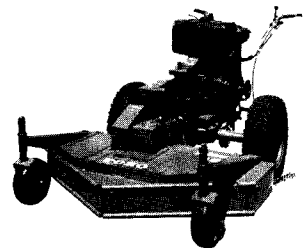
7 UNIT HYDRAULIC PARKMASTER



21" HEVI-DUTY WHIRLWIND SELF-PROPELLED

Reel Mower or Rotary Mower . . . Self Propelled or Riding Mower . . . Whatever your preference in Power Mowers, Toro makes a model to fit your needs. Choose from Toro's complete line of fine mowing equipment.

Toro has a mower that's just right for you. And Toro Mowers are the best you can buy!



50" TROJAN

TORO MANUFACTURING CORPORATION - Minneapolis 20, Minnesota, U.S.A.

LITHO IN U.S.A.

**TORO** Builds the right Power Mower for every need!