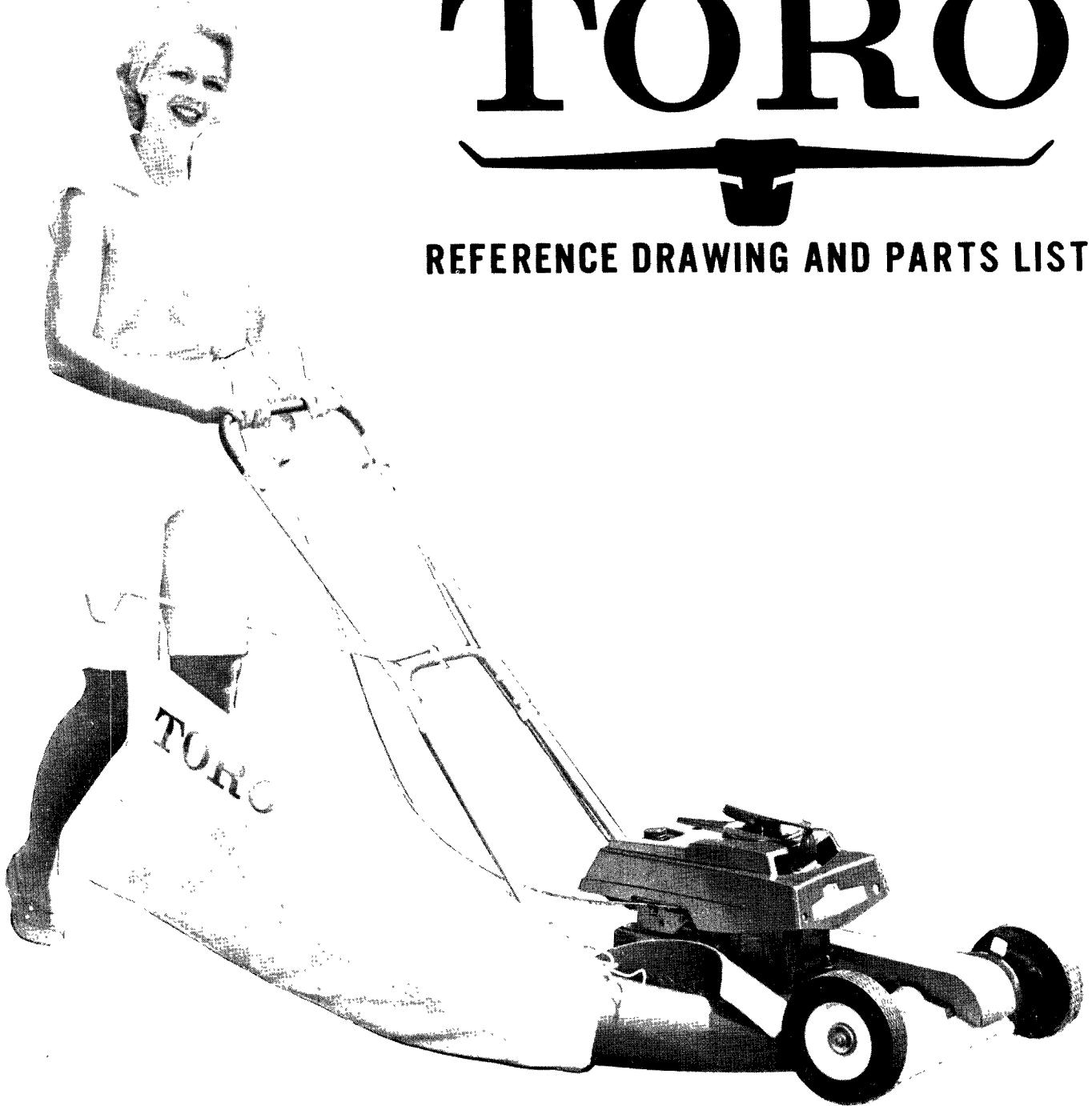


1961

TORO



REFERENCE DRAWING AND PARTS LIST



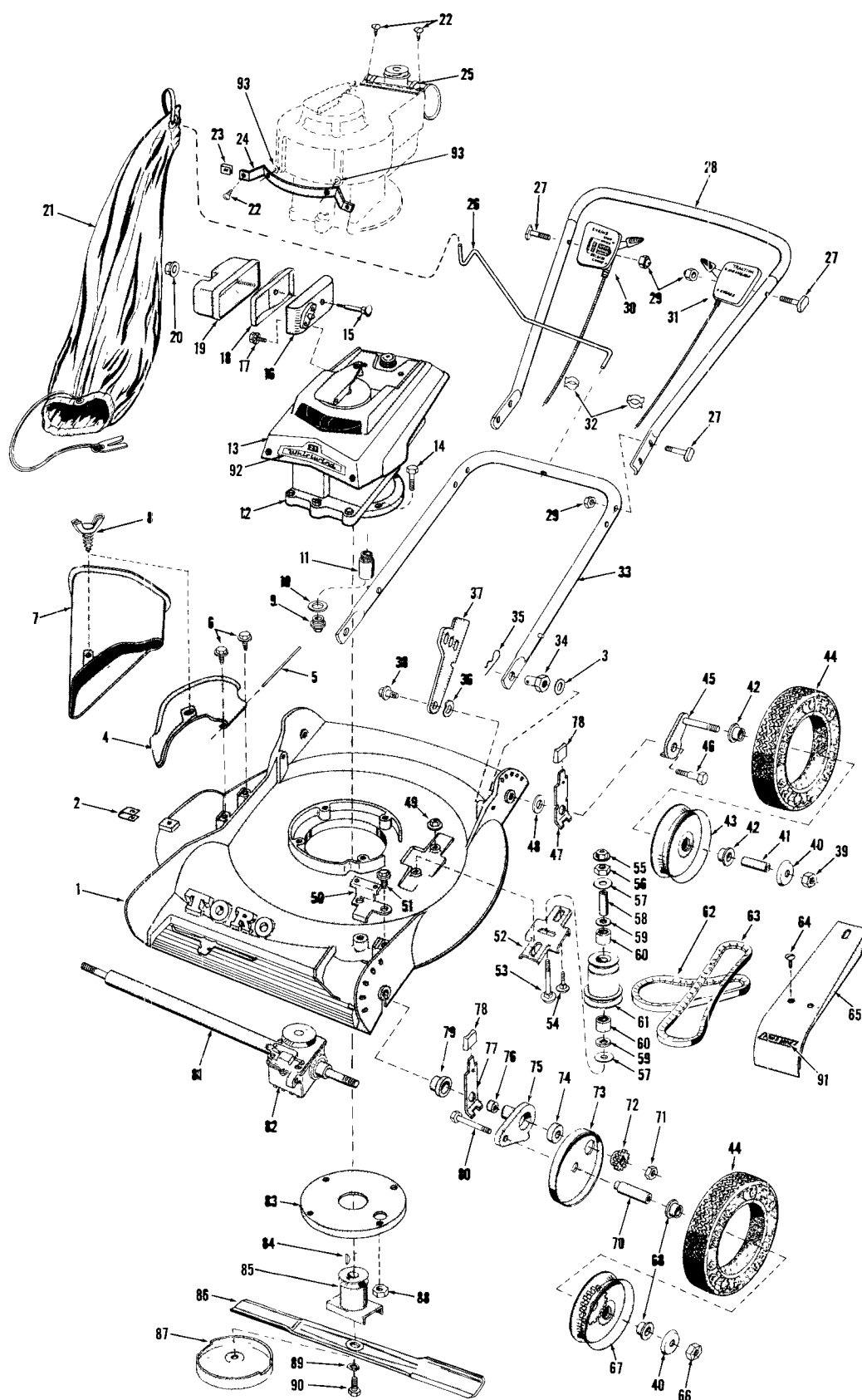
21" WHIRLWIND - S.P.

MODEL NO. 20121

BOOK NO. 7556

Price 25 cents

MOWER DRAWING



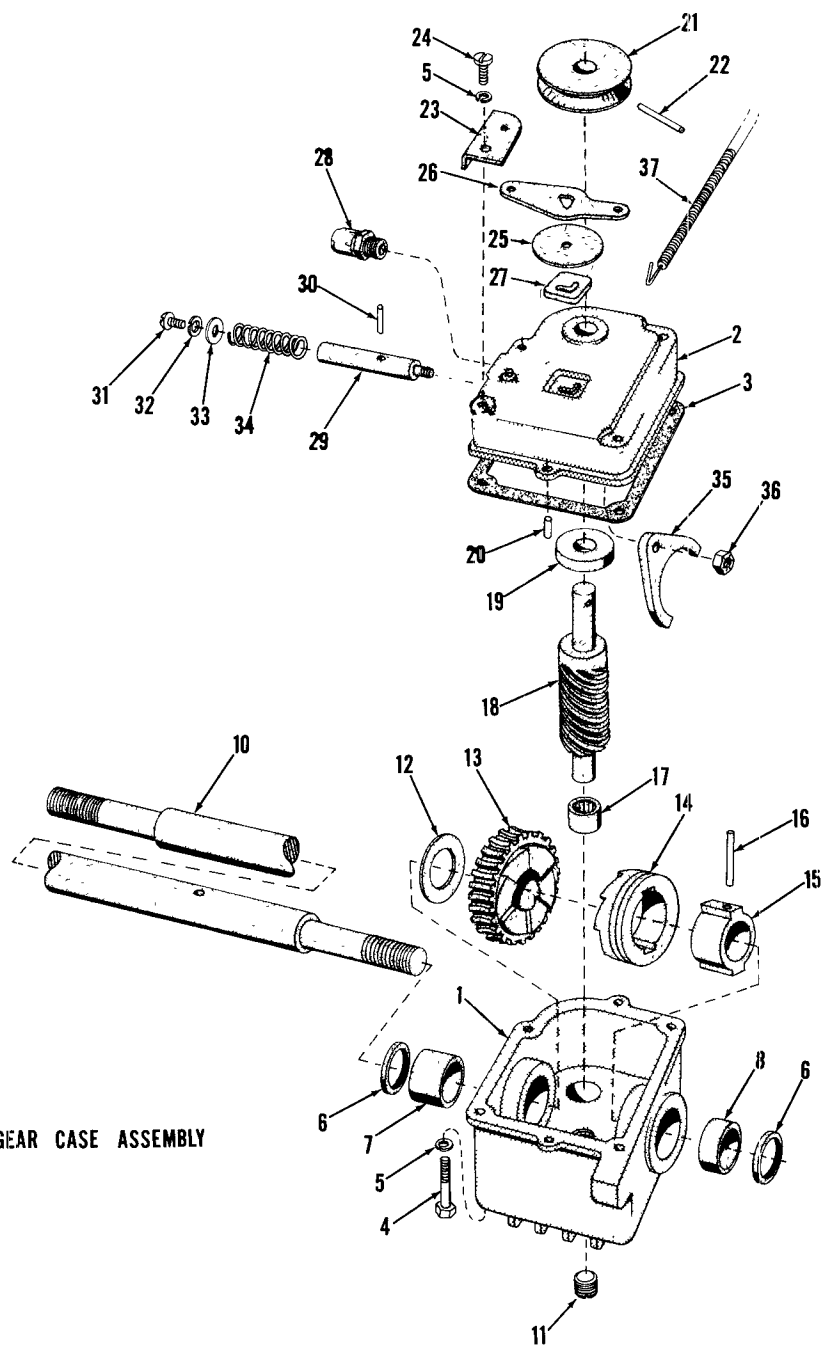
Drawing No. 7556-2

PARTS LIST

Ref. No.	Part No.	Description	No. Used	Ref. No.	Part No.	Description	No. Used
1	3-2484	Main Frame	1	50	3-2663	Bracket, Transmission	1
2	3290-190	Speed Nut	1	51	32104-31	Screw	2
3	3255-18	Lockwash., Ext. Tooth	2	52	3-0751	Mounting Bracket	1
4	3-2574	Deflector	1	53	3-2642	Special Bolt	1
5	3-2644	Hinge-Pin	1	54	3230-16	Carriage Bolt	2
6	32104-58	Screw	2	55	32128-12	Nut, Lock	1
7	3-2572	Bag Attachment	1	56	3-2651	Nut, Idler	1
8	3-2647	Thumb Screw	1	57	3-0750	Washer	2
**9	27244	Oil Drain	1	58	3-0748	Spindle	1
**10	27245	Gasket, Oil Drain	1	59	253-85	Oil Seal	2
11	3-0761	Extension, Oil Drain	1	60	252-50	Bearing	2
12	221-190	Engine	1	61	3-0747	Idler Pulley	1
13	3-2566	Engine Shroud	1	62	3-1183	Belt, Cutter Bar	1
14	322-13	Screw, 5/16" N.C. x 2 ³ / ₄	3	63	3-1182	Belt, Traction	1
15	3292-12	Carriage Bolt	1	64	32104-60	Screw	2
16	3-2722	Muffler, Engine Side	1	65	3-2657	Belt Guard	1
17	32140-17	Screw, Sems	2	66	32146-6	Nut	2
18	3-2723	Baffle, Muffler	1	67	3-0742	Front Wheel W/Gear & Bushings (Ref. #68)	2
19	3-2724	Muffler, Free Side	1	68	3-1506	Bushing, Front Wheel	4
20	32128-10	Stop Nut	1				2
21	3-0688	Bag Assembly	1	70	3-0741	Spindle	2
22	32104-59	Screw, Self-Tap	4	71	3296-5	Nut	2
23	3290-191	Speed Nut	2	72	3-0738	Gear	2
24	3-2772	Bracket, Front Shroud	1	73	3-0740	Wheel Cover	2
25	3-1824	Tank, Shroud Bracket	1	74	251-145	Bearing	2
26	3-0690	Hanger, Bag	1	75	3-0735	Pivot Arm, Left	1
27	3-2654	Screw	6	*	3-0736	Pivot Arm, Right	1
28	2-1039	Handle Assy, Upper	1	76	256-1	Bushing	2
29	32128-11	Nut, 1/4" N.C. Lock	6	77	3-2640	Arm Ass'y, Front Wheel	2
30	3-2791	Throttle Control Assy.	1				4
31	3-2792	Clutch Control Assy.	1	78	3-0650	Knob	2
32	WA-85	Clip	2	79	3-2646	End Cap	2
33	3-0700	Handle Assy., Lower	1	80	3211-11	Wheel Bolt, 3/8" N. F. x 2-1/2" 66	2
34	3-0657	Nut, Handle Pivot	2	81	3-0720	Drive Shaft	1
35	3290-255	Hairpin Cotter	2	82	3-2660	Gear Case Ass'y. incl. Ref. #81	1
36	3290-218	Washer, Spring	2	83	3-2643	Grass Guard	1
37	3-2656	Handle Latch	2	84	3257-3	Key	1
38	3-1846	Screw, Shoulder	2	85	3-0755	Hub, Cutter Bar	1
39	32146-9	Nut	2	86	3-0663	Cutter Bar	1
40	2-6710	Hub Cap	4	87	3-2641	Anti-Scalp Dish	1
41	2-1120	Spindle, Rear Wheel	2	88	32149-1	Nut, 5/16" N.C. Lock	3
42	4-4550	Bushing	4	89	3253-6	Lockwasher, 7/16" Reg.	1
43	4-2670	Rear Wheel W/Bushing (Ref. #42)	2	90	3-2713	Screw, Cutter Bar	1
44	4-2600	Tire	4	91	3-2645	Decal, Belt Guard	1
45	3-0654	Pivot Arm, Left Rear	1	92	3-2667	Decal, Front	1
*	3-0641	Pivot Arm, Right Rear	1	93	3-1034	Washer, Blower Housing	2
46	3-0655	Pivot Screw	2	*	3-2822	Decal, Rear	1
47	3-2637	Arm Ass'y, Rear Wheel	2	*	3-2803	Caution Decal	1
48	3-1478	Pivot Washer	2	*	Z-142	Plate, Serial No.	1
49	3290-187	Nut, Lock	2				

*Not Illustrated

**Obtain From Your Lawson Dealer



GEAR CASE ASSEMBLY

Drawing No. 7556-4

DRIVE CASE PARTS LIST

Ref. No.	Part No.	Description	No Used	Ref. No.	Part No.	Description	No Used
1	3-0717	Gear Case	1	20	32121-1	Pin	2
2	3-0725	Cover, Gear Case	1	21	3-0727	Pulley	1
3	3-0734	Gasket	1	22	32121-37	Pin, Pulley to Shaft	1
4	321-18	Screw, $\frac{1}{4}$ " N. C. x $2\frac{1}{4}$ "	4	23	3-2655	Shifter Arm Guide	1
5	3253-3	Lockwasher, $\frac{1}{4}$ " Reg.	5	24	32113-3	Screw, $\frac{1}{4}$ " N. C. x $3/8$ "	1
6	253-86	Oil Seal	2	25	3-2615	Trans. Dust Cap	1
7	256-109	Bearing	1	26	3-0732	Shifter Arm	1
8	256-110	Bearing	1	27	3-0681	Latch Plate	1
10	3-0720	Shaft, Drive	1	28	302-14	Vent	1
11	285-10	Pipe Plug	1	29	3-2662	Shifter Rod	1
12	3-0724	Washer, Thrust	1	30	32121-23	Pin, In Shift Rod	1
13	3-0723	Worm Gear	1	31	3251-2	Screw, 10-24 x $\frac{1}{2}$ "	1
14	3-0722	Clutch Jaw	1	32	3253-17	Lockwasher, #10 Reg.	1
15	3-0721	Sleeve	1	33	3256-14	Washer, #10 S. A. E.	1
16	32121-40	Pin	1	34	3-0731	Spring	1
17	252-51	Bearing	1	35	3-0730	Shifter Fork	1
18	3-0726	Worm Shaft	1	36	3296-12	Nut, 10-24 Elastic Stop	1
19	251-144	Bearing	1	37	3-2792	Control, Clutch	1

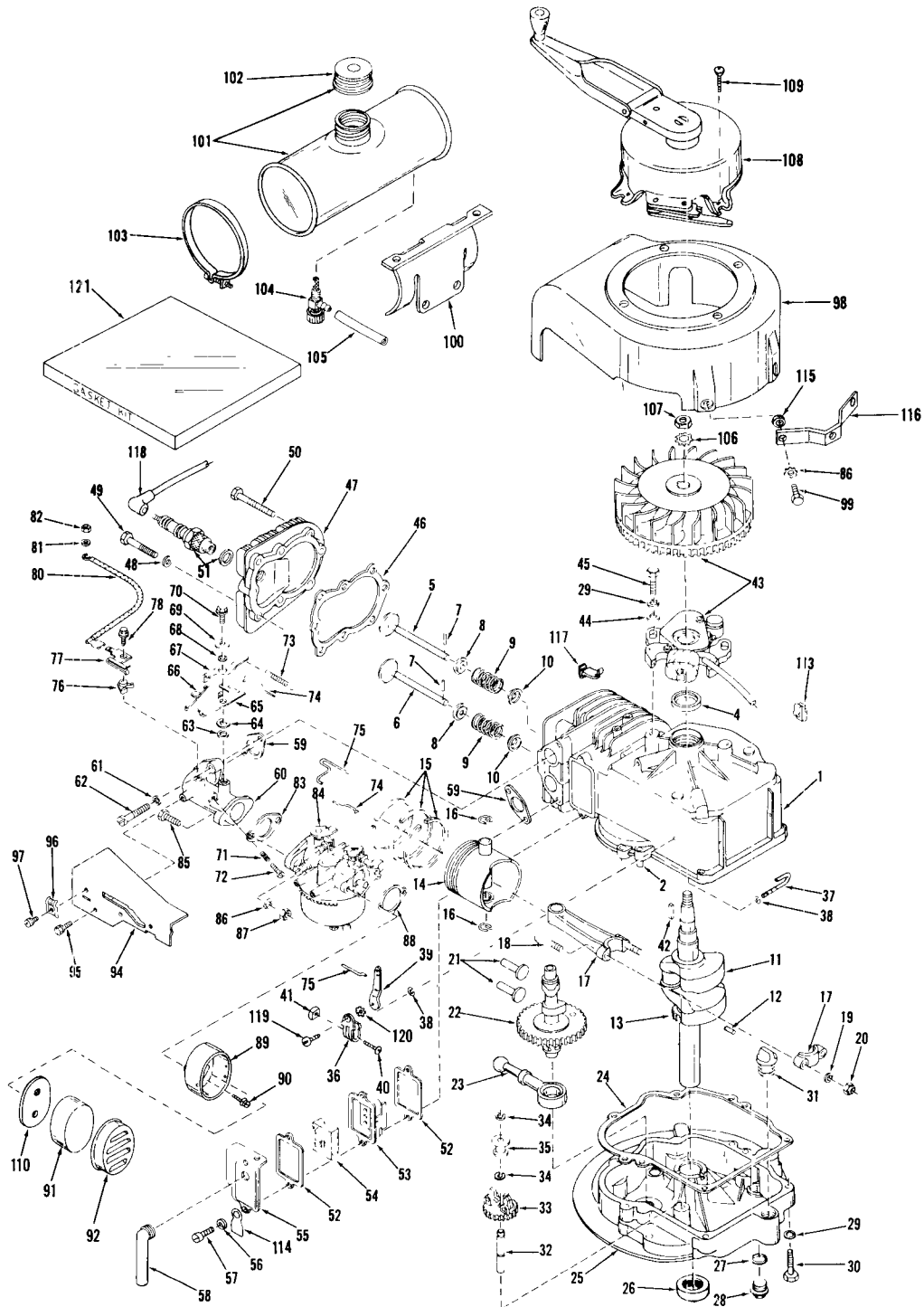
INSIST ON GENUINE TORO PARTS

IMPORTANT ORDERING INSTRUCTIONS

Repair parts are available from your TORO distributor or service dealer. To insure getting correct parts without delay, please furnish the following information:

1. Serial number of your mower as shown on the name plate.
2. Part number, description and quantity of each part required.
3. State whether parts should be shipped by mail or express. All repair parts are shipped F. O. B. factory.
4. Name and address where parts are to be shipped.
5. Do not order by reference number; use part number only.

ENGINE DRAWING SPINSTART



Drawing No. 7556-6

ENGINE PARTS LIST

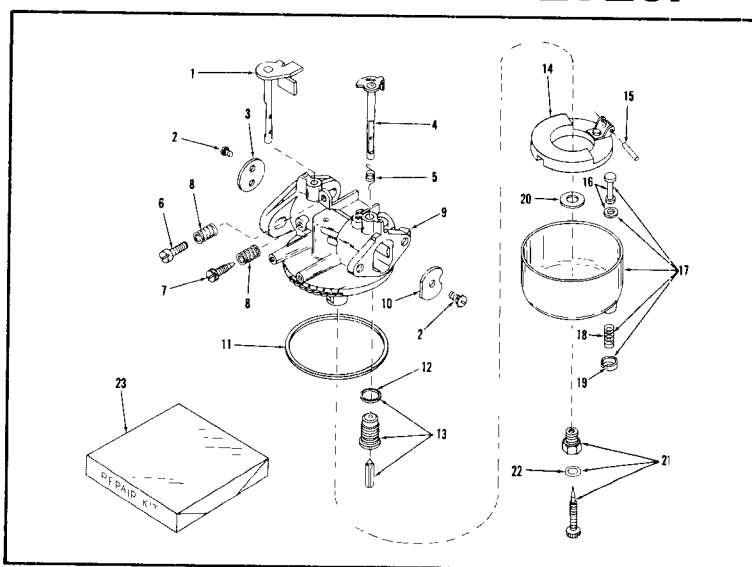
Ref. No.	Part No.	Description	No. Used	Ref. No.	Part No.	Description	No. Used
1	29913	Cylinder Assembly (Incl. #2 & 4)	1	39	29917	Lever, Governor	1
2	26727	Pin, Dowel	2	40	29826	Screw, Socket Hd. Cap Screw, 10-32 x 3/4	1
4	†29183	Seal, Oil	1	41	29216	Nut, Square, 10-32	1
5	29314	Valve, Intake	1	42	27247	Key, Straight	1
5	29316	Valve, Intake (1/32" O.S.)	1	43	29162	Magneto, Wico #FW-2617	1
6	29313	Valve, Exhaust	1	43	29172	Magneto, Phelon #F-32206	1
6	29315	Valve, Exhaust (1/32" O.S.)	1	43	29619	Magneto, Tecumseh #5000	1
7	20794	Pin, Valve Spring Retaining	2	44	8345	Flatwasher, 1/4"	2
8	26957	Cap, Upper Valve Spring	2	45	650216	Screw, Hex Hd. Cap 1/4-20 x 3/4	2
9	24772	Spring, Valve	2	46	†29920	Gasket, Cylinder Head	1
10	21043	Cap, Lower Valve Spring	2	47	29921	Head, Cylinder	1
11	29223	Crankshaft Assembly (Incl. #12 & 13)	1	48	26073	Washer, 5/16"	5
12	29783	Pin, Groove	1	49	6021	Screw, Hex Hd. Cap, 5/16-18 x 1-1/2	5
13	27613	Gear, Crankshaft	1	50	6023	Screw, Hex Hd. Cap, 5/16-18 x 2	3
14	27841	Piston & Pin Assembly (Incl. 2 of #16)	1	51	21943	Spark Plug (Champion J8 or Equivalent)	1
14	27861	Piston & Pin Assembly (.010 O.S.)(Incl. 2 #16)	1	52	†27234	Gasket, Valve Spring Cover	2
14	27862	Piston & Pin Assembly (.020 O.S.)(Incl. 2 #16)	1	53	27810	Body Assy. Breather	1
15	27565	Ring Set	1	54	27233	Element, Filter	1
15	27566	Ring Set (.010 O.S.)	1	55	27626	Cover, Valve Spring	1
15	27567	Ring Set (.020 O.S.)	1	56	8269	Lockwasher, Heavy Split, #10	2
16	20381	Ring, Piston Pin Retain.	2	57	28404	Screw, Phil. Fil. Hd. Mach. 10-24 x 1/2	2
17	26743	Rod Assy, Connecting (Incl. #18, 19 & 20)	1	58	27627	Tube, Breather	1
18	26706	Bolt, Connecting Rod	2	59	†26754	Gasket, Intake and Exhaust	2
19	20747	Washer, Connecting Rod Bolt	2	60	29187	Pipe, Intake	1
20	27573	Nut, Connecting Rod	2	61	27513	Lockwasher, Split, 1/4"	2
21	27241	Lifter, Valve	2	62	28725	Screw, Phil. Fil. Hd. Mach. 1/4-20 x 7/8	2
22	27242	Camshaft	1	63	27830	Flatwasher	1
23	29914	Pump Assembly, Oil	1	64	28558	Washer, Spring Wave	1
24	†26750	Gasket, Mounting Flange	1	65	29188	Lever, Control	1
25	29925	Flange Assy, Mounting (Incl. #26, 27, 28 & 32)	1	66	29190	Spring, Control Lever	1
26	†26208	Seal, Oil	1	67	29189	Lever, R. P. M. Adjust.	1
27	†28833	Gasket, Dr. Plug, 5/8 ID	1	68	28562	Bushing, R. P. M. Adjusting Lever	1
27	†30129	Gasket, Dr. Plug, 3/8 ID	1	69	28563	Washer, Plain Flat	1
28	27244	Plug, Oil Drain, 5/8-18	1	70	28762	Screw, Slotted Hex. Hd. 10-24 x 1/2	1
28	30128	Plug, Oil Drain, 3/8-18	1	71	28569	Spring, Compression	1
29	8303	Lockwasher, Hvy, 1/4"	6	72	28379	Screw, Fil. Hd. Mach. 8-32 x 5/8	1
30	650236	Screw, Cap, 1/4 - 20 x 1 1/4"	6	73	29199	Spring, Extension	1
31	27625	Plug, Oil Filler	1	74	29206	Link, Choke	1
32	29194	Shaft, Mech. Governor	1	75	29926	Link, Throttle	1
33	30117	Gear Assy. Governor	1	76	29209	Washer, Insulating	1
34	29193	Ring, Retaining	2				
35	30116	Spool	1				
36	29916	Clamp, Governor Lever	1				
37	29915	Rod, Governor	1				
38	29310	Ring, Retaining	2				

(Continued on Next Page)

ENGINE PARTS LIST - Cont'd.

Ref. No.	Part No.	Description	No. Used	Ref. No.	Part No.	Description	No. Used
77	29210	Terminal	1	98	29933	Housing, Blower	1
78	28762	Screw, Hex Slotted Hd. 10-24 x 1/2	1	99	650240	Screw, Hex Hd. Cap, 1/4-20 x 5/8	2
80	28602	Wire Assy, Ground	1	100	3-1824	Bracket, Fuel Tank Mounting	1
81	8263	Lockwasher, Split #6 (Wico or Tecumseh Mag)	1	101	29245	Tank, Assembly, Fuel (Incl. #102)	1
81	8266	Lockwasher, Split #8 (Phelon Magneto)	1	102	27799	Cap, Fuel Filler	1
82	7962	Hex Nut, 6-32 (Wico or Tecumseh Magneto)	1	103	29200	Strap, Fuel Tank	1
82	7963	Hex Nut, 8-32 (Phelon Magneto)	1	104	28571	Strainer & Shut-off, Fuel	1
83	†26756	Gasket, Carburetor	1	105	29409	Line, Fuel	1
84	29237	Carburetor	1	106	29544	Washer, Plain Flat	1
85	6201	Screw, Hex Hd. Cap, 1/4-28 x 7/8	2	107	29201	Nut, Flywheel	1
86	27070	Lockwasher, 1/4" E. T.	2	108	29932	Starter Assembly Ratchet Impulse	1
87	8138	Nut, Hex Jam, 1/4-28	2	109	29716	Screw, Phil. Fil. Hd. Mach. 1/4-28 x 7/16	4
88	†27272	Gasket, Air Cleaner	1	113	27275	Clip, Lead Wire	1
89	29922	Body, Air Cleaner	1	114	550145	Plate, Serial Number	1
90	28753	Screw, Phil. Fil. Hd. Mach. Sems 8-32x1/2	2	115	3-1034	Washer, Plain Flat	2
91	29923	Filter, Air	1	116	3-2772	Bracket, Shroud Mount.	1
92	29924	Cover, Air Cleaner	1	117	29406	Clip, Fuel Line	1
94	29930	Cover, Speed Control	1	118	610118	Terminal, Spark Plug	1
95	28763	Screw, Slotted Hex Wash. Hd. 10-24x7/16	2	119	29919	Screw, Pan Slotted Hd. Self-tap. 8-32 x 3/8 Type 23	1
96	27793	Clip, Conduit	1	120	29918	Lockwasher, No. 8 E. T.	1
97	28942	Screw, Slotted Hex. Hd. Sems, 10-32 x 3/8	1	121	29927	Kit, Gasket (Incl. items marked †)	1

CARBURETOR No. 29237



Ref. No.	Part No.	Description	No. Used	Ref. No.	Part No.	Description	No. Used
	29237	Carburetor, Walbro LMG-134		2	630606	Screw, Sems Pan Hd. 4-40 x 3/16	3
1	29171	Shaft Assy, Throttle	1	3	27553	Valve, Throttle	1

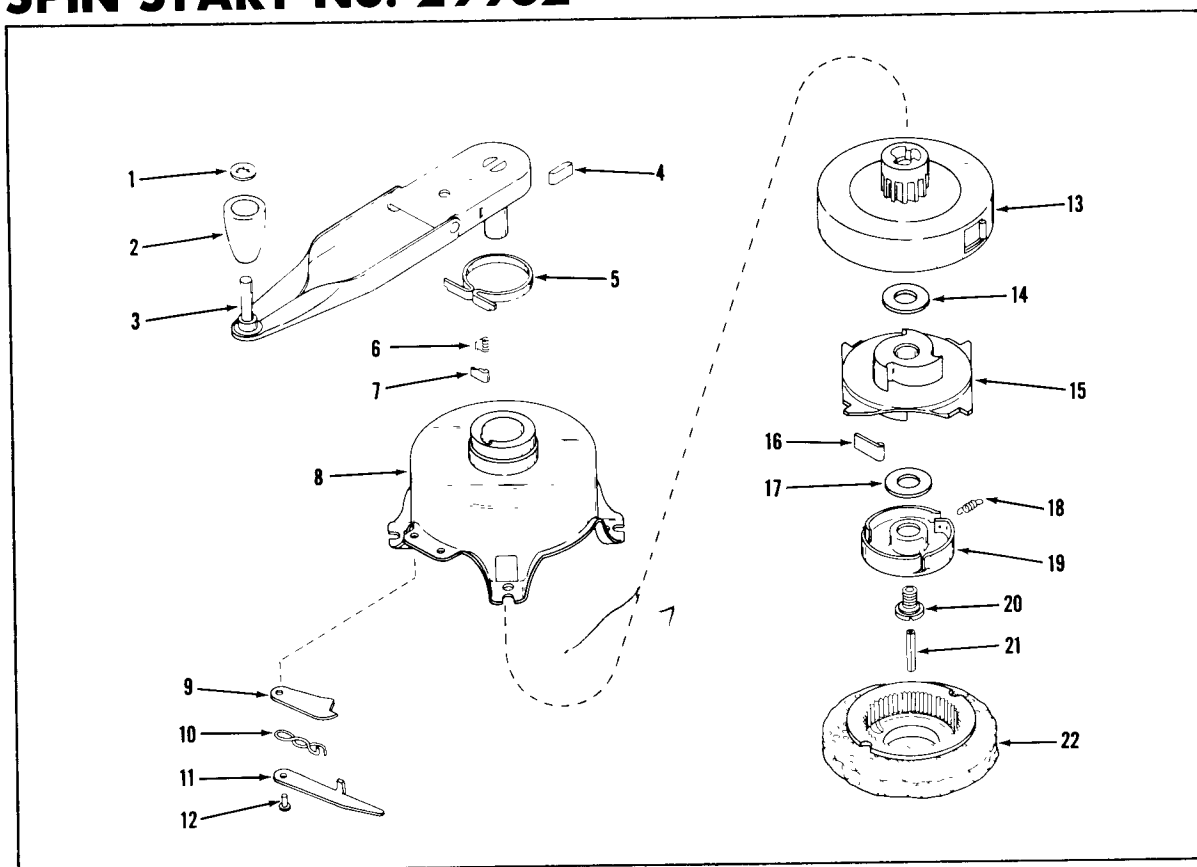
(Continued on Next Page)

CARBURETOR No. 29237 PARTS LIST (Cont'd.)

Ref. No.	Part No.	Description	No. Used
4	28637	Shaft Assy, Choke	1
5	27787	Spring, Choke Shaft	1
6	630605	Screw, Throttle Adjust. No. 10-32 x 5/8	1
7	*27112	Needle, Idle	1
8	27114	Spring, Throttle & Idle Needle	2
9	29238	Body Assy, Carburetor	1
10	28924	Valve, Choke	1
11	*27109	Gasket, Body-to-Bowl	1
12	27108	Gasket, Float Valve Seat	1
13	*29154	Valve, Seat & Gasket Matched Float	1

Ref. No.	Part No.	Description	No. Used
14	27105	Float Assembly	1
15	*27106	Shaft, Float	1
16	27136	Stem & Gasket Assembly Bowl Drain	1
17	29170	Bowl & Drain Assy, Fuel	1
18	27137	Spring, Bowl Drain	1
19	27138	Retainer, Bowl Drain Stem	1
20	*27110	Gasket, Bowl-to-Body	1
21	*28945	Needle Assy, Power Adj.	1
22	*27544	Ring, "O"	1
23	29155	Repair Kit (Incl. Items Marked *)	1

SPIN START No. 29932

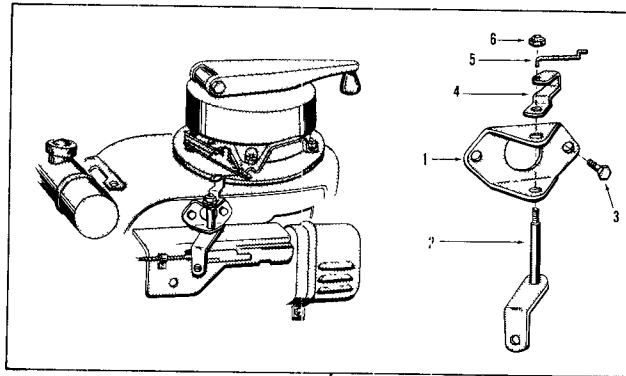


Ref. No.	Part No.	Description	No. Used
1	29227	Fastener, Handle	1
2	29228	Knob, Starter Handle	1
3	29950	Handle Assembly	1
4	29936	Dog, Wind	1
5	29935	Band, Brake	1
6	29938	Spring, Lock Dog	1
7	29937	Dog, Lock	1
8	29949	Housing Assy., Starter	1
9	29944	Lever, Release	1
10	29943	Spring, Release Lever	1
11	29945	Lever, Trip	1

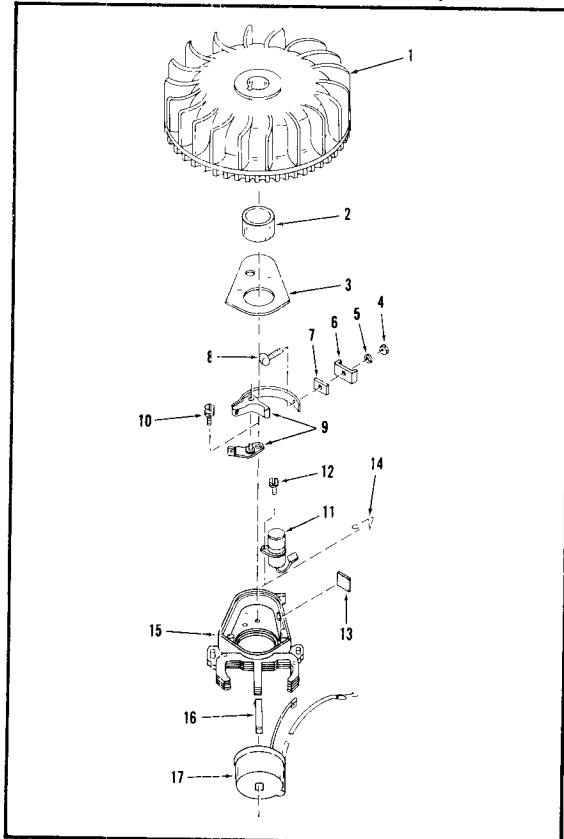
Ref. No.	Part No.	Description	No. Used
12	29946	Stud, Release Lever	1
13	29948	Spring and Keeper	1
14	29941	Washer, Bearing	1
15	29947	Hub and Cover	1
16	590148	Dog, Starter	3
17	29734	Washer, Thrust	1
18	29940	Spring, Retainer	1
19	29942	Retainer	1
20	29733	Screw, Brake, (Left Hand)	1
21	29736	Pin, Centering	1
22	29939	Hub & Screen	1

REMOTE CONTROL LINKAGE

Ref. No.	Part No.	Description	No. Used
1	3-2832	Attach Bracket	1
2	3-2860	Lever Assembly	1
3	32104-63	Screw	2
4	3-2861	Crank	1
5	3-2835	Link	1
6	32127-40	Nut	1

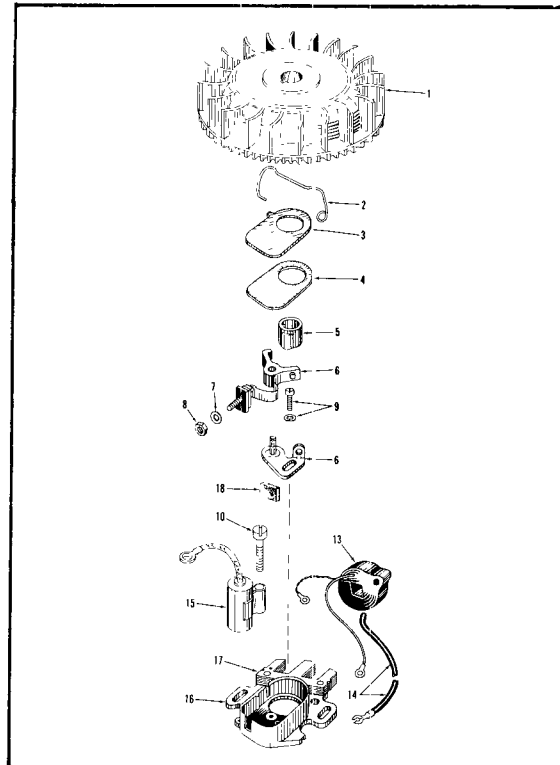


MAGNETO No. 29162 (Wico FW-2617)



Ref. No.	Part No.	Description	No. Used
1	29165	Flywheel	1
2	29166	Cam, Breaker	1
3	29163	Cover, Breaker Box	1
4	7962	Nut, Hex No. 6-32	1
5	8263	Lockwasher, Split No. 6	1
6	27523	Insulator, Outside	1
7	27524	Insulator, Inside	1
8	27525	Stud, Connecting	1
9	27526	Contact Assy, Breaker	1
10	25524	Screw & Lockwasher	1
11	29164	Condenser	1
12	610435	Screw & Lockwasher	1
13	25525	Felt, Cam Wiper	1
14	27529	Spring, Cover	1
15	29167	Plate, Stator	1
16	27528	Spring, Coil Wedge	1
17	27531	Coil & Lead Wires	1

MAGNETO No. 29172 (Phelon F-32206)



Ref. No.	Part No.	Description	No. Used
1	29173	Flywheel	1
2	27959	Spring, Breaker Box	1
3	29180	Cover, Breaker Box Dust	1
4	29179	Gasket, Breaker Box	1
5	29178	Dust Cover	1
6	610478	Cam, Breaker	1
7	610385	Breaker Assembly	1
8	610385	Washer, Terminal	1
9	610408	Nut, Terminal	1
10	29181	Screw & Washer Assy. Breaker	1
11	610593	Screw, Condenser Fast.	1
12	29176	Coil Assembly	1
13	27950	Wire Ignition Lead	1
14	29177	Condenser	1
15	29175	Core & Plate Group	1
16	29174	Stator Assembly	1
17	27956	Felt, Cam Wiper	1

SPECIFICATIONS

ENGINE: Toro TE - 2-2001, Spin starter

ENGINE SHROUD: Rigid Polyethylene

FUEL TANK CAPACITY: 1 quart

CUTTER BLADE: 20-7/8" long. Hardened high carbon steel, positive attachment with one fastener.

TRACTION CLUTCH: Hand operated lever and control wire system mounted on upper handle which operates spiral jaw clutch in gear case on drive shaft.

FRONT WHEEL TRACTION DRIVE: 3L section V-belt from 1.6 P.D. pulley on crankshaft to 1.85 P.D. pulley on idler shaft. 3L section V-belt from 1.6 P.D. pulley on idler shaft to 1.85 P.D. pulley on worm shaft. (1.34:1 reduction from engine to gear case.)

GEAR CASE: Die cast aluminum case. Hardened and polished 4 thread steel worm supported by ball and needle bearings and bronze bushings (6.25:1 reduction).

WHEEL REDUCTION: 14T Stressproof steel pinions on drive shaft supported by double sealed ball bearings to 42T laminated steel external spur gears riveted to wheel (3:1 reduction).

REDUCTION, ENGINE TO WHEELS:
25.07:1

WHEELS: #18 ga. Steel disc with oil impregnated powered metal bushings.

TIRES: Semi-pneumatic 8x1.75 Toro tread.

GROUND SPEED: 3.0 MPH at 3200 engine rpm.

HEIGHT OF CUT: 1/2" to 3" by moving wheels, with hand operated levers.

THROTTLE CONTROL: Control wire and casing. Operating lever mounted to upper handle. Stop, run, and choke positions. Impulse start engines equipped with positive mechanical interlock between starter release and throttle control.

WIDTH OF CUT: 21"

HOUSING: Die cast aluminum alloy, spiral grass chamber, right hand discharge. Symmetrical wheel location, hinged chute deflector.

HANDLE: 3/4" O.D. x 16 ga. welded steel tubing in two separable halves. Plastic grips. No tool, positive handle height adjustment.

DIMENSIONS:

Width 24 1/2"

Length 32 1/2" w/o handle, wheels set

Height 16" at 1" cut.

WEIGHT: 71 pounds.

STANDARD EQUIPMENT:

Bagging kit

- Grass bag assembly

- Bagging attachment

- Bag hanger

Anti-scalp dish

Warranty

The Manufacturer warrants each new piece of equipment sold to be free of defects in material and workmanship. For ninety (90) days from the purchase date, Toro Manufacturing Corporation will repair or replace for the original purchaser, free of charge, through any Authorized Service Dealer, any part or parts found at our factory in Minneapolis, Minn., to be defective under normal use and service.

This Warranty does not obligate the Manufacturer to bear the cost of transportation charges in connection with the replacement or repair of

defective parts -- nor shall it apply to a machine upon which repairs or alterations have been made, unless authorized by the manufacturer.

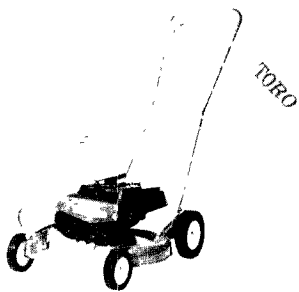
This Warranty does not include nor cover standard accessories produced by other manufacturers. Such accessories have separate warranties by their respective manufacturers. and repair or exchange will be made on the basis of such warranties, and the policies authorized by them shall be adhered to.

This warranty is in lieu of all other warranties expressed or implied.

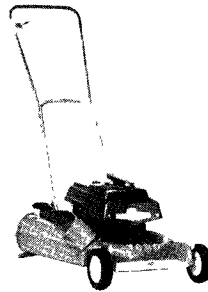
TORO POWER MOWERS

Toro power mowers and Power Handle implements are designed and built to give years of precision performance . . . to make them "the best you can buy." And there's over 40 years of manufacturing experience to back them up. One of Toro's most important objectives — and one which has

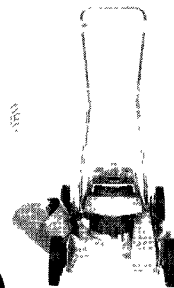
helped make Toro the world's largest manufacturer of power mowers — is to provide the customer with complete local service and parts. This Toro has done through an extensive chain of service dealers, factory-trained to give you the most careful, competent care for your Toro work-saver.



19" ROTARY



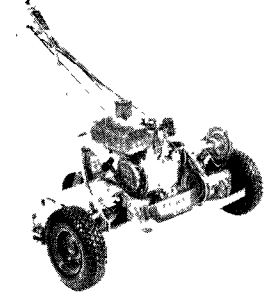
21" HAND PROPELLED ROTARY



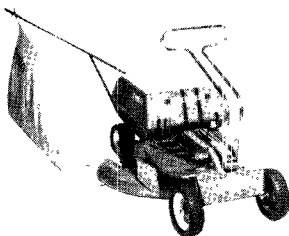
21" SELF-PROPELLED ROTARY



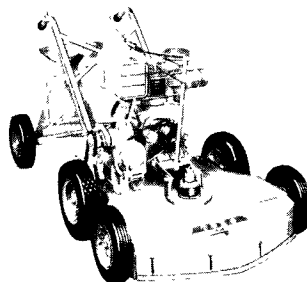
21" SPORTLAWN



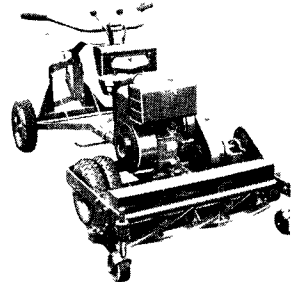
30" STARLAWN



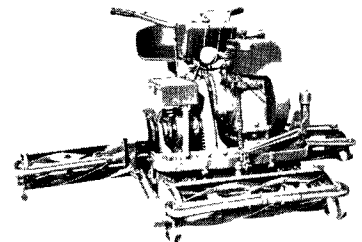
25" PONY



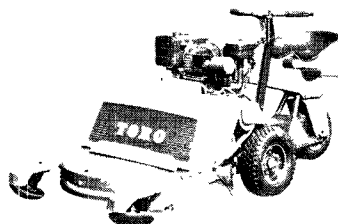
31" GRASSKING



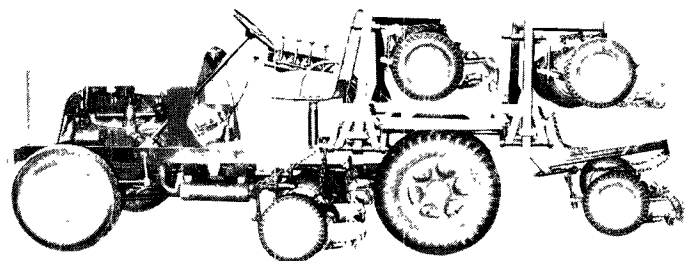
30" PARK SPECIAL



76" PROFESSIONAL



32" SELF-PROPELLED ROTARY



7 UNIT HYDRAULIC PARKMASTER

Reel Mower or Rotary Mower . . . Self Propelled or Riding Mower . . . Whatever your preference in Power Mowers, Toro makes a model to fit your needs. Choose from Toro's complete line of fine mowing equipment.

Toro has a mower that's just right for you. And Toro Mowers are the best you can buy!

TORO MANUFACTURING CORPORATION - Minneapolis 6, Minnesota, U.S.A.

TORO *Builds the right Power Mower for every need!*