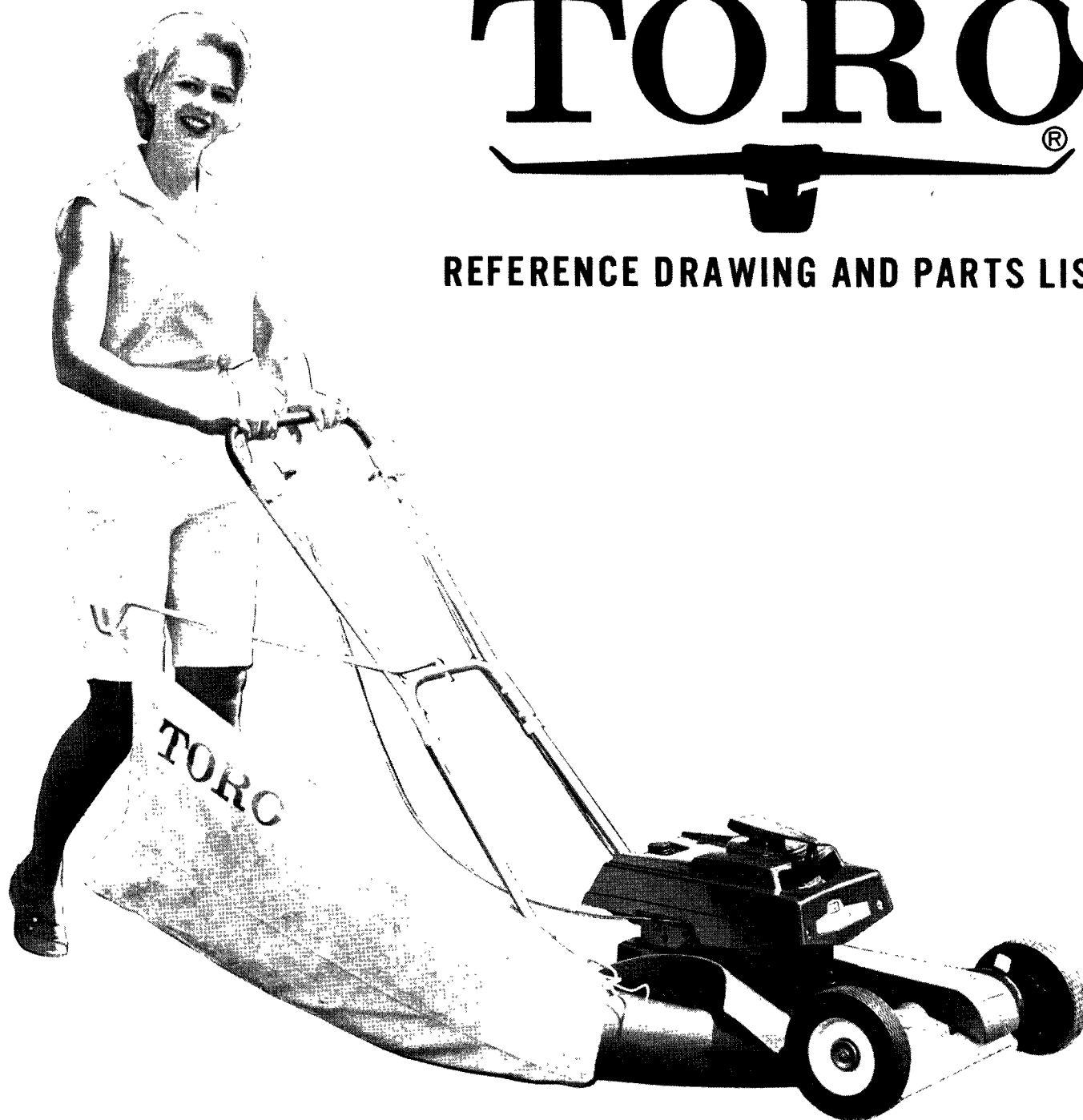


1962

TORO®

REFERENCE DRAWING AND PARTS LIST



19" WHIRLWIND - H.P.

MODEL NO. 18112
(RECOIL START)

MODEL NO. 18122
(SPIN START)

21" WHIRLWIND - H.P.

MODEL NO. 19122

21" WHIRLWIND - S.P.

MODEL NO. 20122

BOOK NO. 8016

Price 25 cents

SPECIFICATIONS

ENGINE: 19" - Toro TE1-3010; 21" H.P. - Toro TE1-3014; 21" S.P. - TE2-3014.

ENGINE SHROUD: Rigid Polyethylene.

FUEL TANK CAPACITY: 1 quart.

CUTTER BLADE: 19" - 19" long; 21" H.P. and 21" S.P. - 21" long, hardened.

TRACTION CLUTCH (21" S.P.): Hand operated lever and control wire system mounted on upper handle which operates spiral jaw clutch in gear case on drive shaft.

FRONT WHEEL TRACTION DRIVE (21" S.P.): 3L section V-belt from 1.6 P.D. pulley on crankshaft to 1.85 P.D. pulley on idler shaft. 3L section V-belt from 1.6 P.D. pulley on idler shaft to 1.85 P.D. pulley on worm shaft. (1.34:1 reduction from engine to gear case.)

GEAR CASE (21" S.P.): Die cast aluminum case. Hardened and polished 4 thread steel worm supported by ball and needle bearings and bronze bushings (6.25:1 reduction).

WHEEL REDUCTION (21" S.P.): 14T Stressproof steel pinions on drive shaft supported by double sealed ball bearings to 42T laminated steel external spur gears riveted to wheel (3:1 reduction).

REDUCTION, ENGINE TO WHEELS (21" S.P.): 25.07:1

WHEELS: #18 ga. Steel disc with oil impregnated powered metal bushings.

TIRES (19" and 21" H.P.):

- Front - Semi-pneumatic 6 x 1.50 Toro tread
- Rear - Semi-pneumatic 8 x 1.75 Toro tread

TIRES (21" S.P.): Semi-pneumatic 8 x 1.75 Toro tread.

HEIGHT OF CUT: 1/2" to 3" by moving wheels, with hand operated levers.

WIDTH OF CUT: 19" and 21"

HOUSING: Die cast aluminum alloy, spiral grass chamber, right hand discharge. Symmetrical wheel locations. Hinged chute deflector.

HANDLE: 3/4" O.D. x #16 ga. welded steel tubing in separable halves. Plastic tubing grips. No tool, positive handle height adjustment.

THROTTLE CONTROL: Control wire and casing. Operating lever mounted to upper handle. Stop, run, and choke positions. Spin Start engines are equipped with positive mechanical interlock between starter release and throttle control.

DIMENSIONS:

Width 19" - 22 $\frac{1}{2}$ "; 21" H.P. and 21" S.P. - 24 $\frac{1}{2}$ "

Length 19" - 29"; 21" H.P. - 30 $\frac{1}{2}$ "; 21" S.P. - 32 $\frac{1}{2}$ " w/o handle, wheels at 1" cut

Height 19" - 12 $\frac{3}{4}$ " (Recoil Start)
19" and 21" H.P. - 14 $\frac{1}{4}$ " (Spin Start)
21" S.P. - 16" (Spin Start)

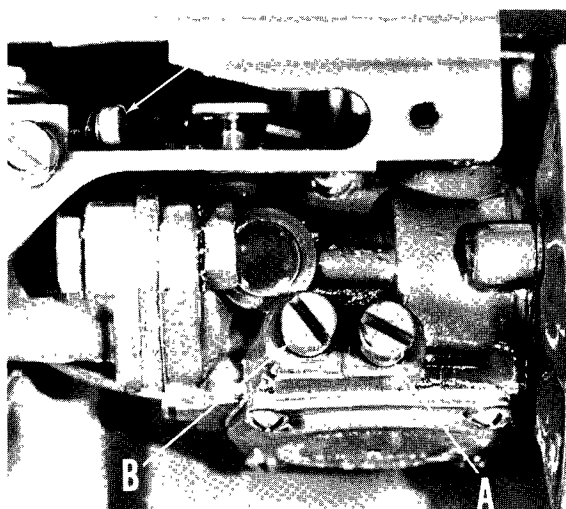
WEIGHT:

19" - 52 pounds
21" H.P. - 56 pounds
21" S.P. - 71 pounds

STANDARD EQUIPMENT:

- Bagging kit
 - Grass bag assembly
 - Bagging attachment
 - Bag hanger
- Anti-scalp dish

CARBURETOR ADJUSTMENTS



Power and idle screw adjustments are set at the factory for best performance. If it should become necessary to adjust the carburetor, proceed as follows:

HIGH SPEED ADJUSTMENTS

1. Initial adjustment, turn high speed adjusting screw "A" clockwise until finger tight.

2. Carefully turn high-speed adjusting screw "A" in a counter-clockwise direction 1 turn.

3. After engine has warmed up, make final adjustments by turning adjusting screw an eighth of a turn at a time, allowing an interval between adjustments for the engine to react.

4. If engine speed is not high enough, adjust high speed by turning screw "D" under carburetor control cover. After increasing speed, make final high speed carburetor adjustments with high speed adjusting screw "A". Allow setting to be slightly rich to compensate for load.

IDLE ADJUSTMENTS

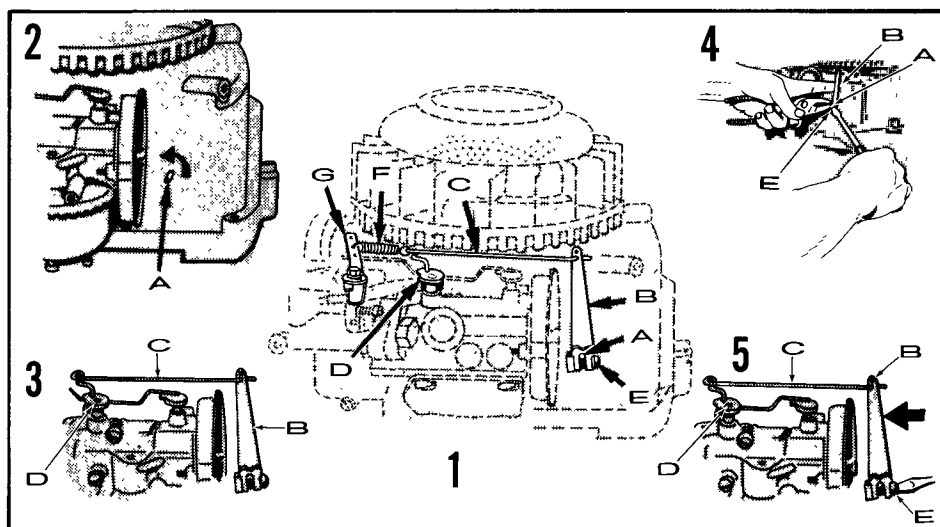
Set throttle control lever in idle position.

1. Turn idle adjusting screw "B" clockwise until finger tight.

2. Turn counter-clockwise 1 turn to open. After engine is started, make final adjustments by turning screw an eighth of a turn at a time, allowing time between turns for engine to react.

3. Idle speed can be adjusted by turning screw "C". After making speed adjustment, make final idle adjustment by turning screw "B".

MECHANICAL GOVERNOR ADJUSTMENTS



Governors are pre-set at the factory. If the governor lever "B" has been removed from the governor shaft "A", proceed as follows:

1. Remove engine shroud (Ref. No. 34, page 4), blower housing (Ref. No. 98, page 8), speed control cover (Ref. No. 94, page 8) and air cleaner element.
2. Carefully turn the governor shaft "A" counter-clockwise until it stops.

3. Attach link "C" to governor lever "B" and carburetor throttle lever "D" and install governor lever on governor shaft "A".

4. With a pair of pliers, hold governor shaft "A" in position and push governor lever "B" to the right until

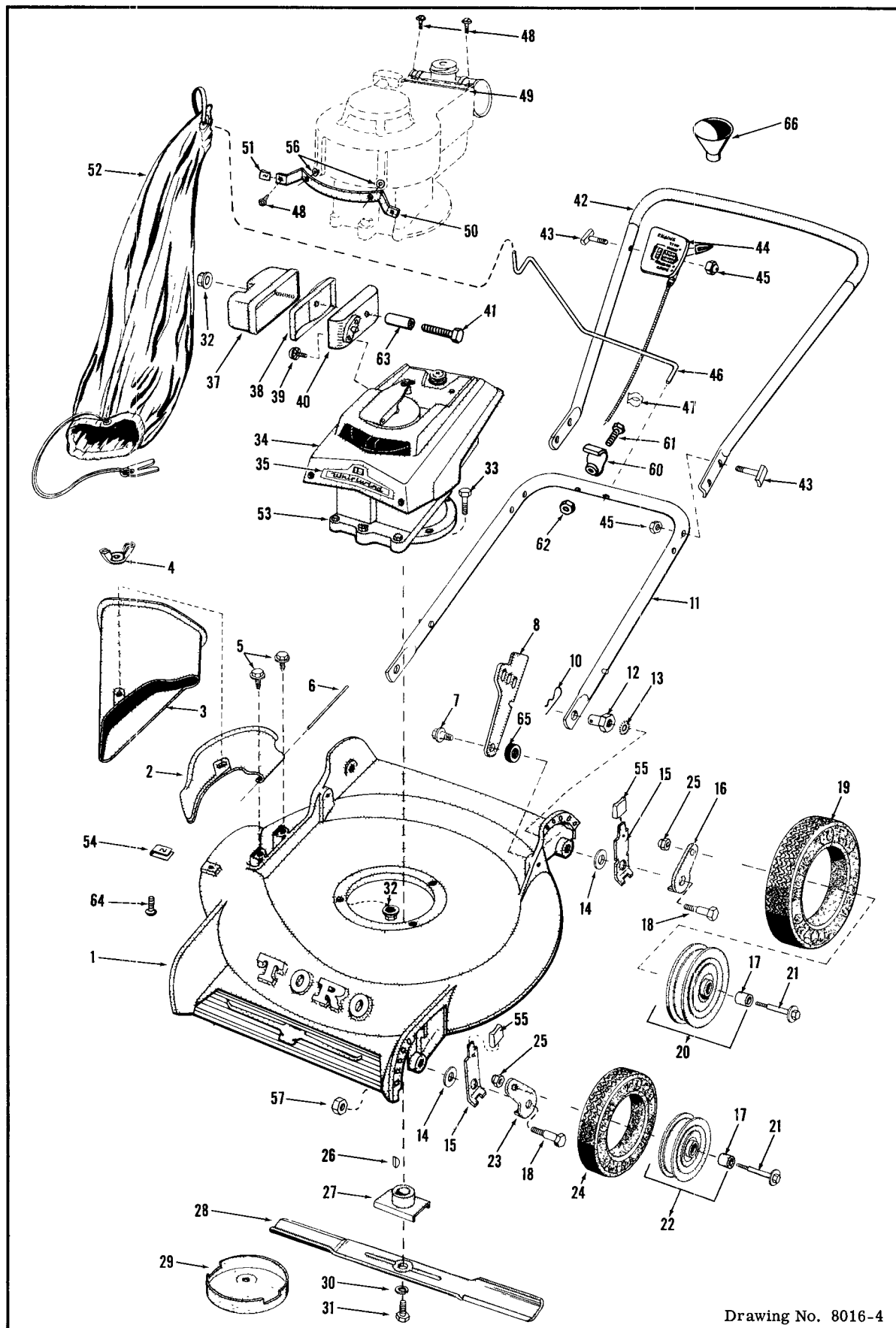
carburetor throttle lever "D" stops the motion. Turn screw "E" until governor lever is snug on governor shaft.

5. With finger, carefully push governor lever "B" counter-clockwise until carburetor throttle lever "D" in figure 1 stops in wide open position. Tighten governor lever screw "E".

6. Attach spring "F" to loop in link "C" and the middle hole in R.P.M. adjusting lever "G" as shown in drawing 1.

Engine speed adjustments are made by turning screw "D" in photo above.

19" and 21" H.P. MOWER DRAWING



Drawing No. 8016-4

19" and 21" H.P. PARTS LIST

Ref. No.	Part No.	Description	No. Used	Ref. No.	Part No.	Description	No. Used
1	3-2437	Main Frame 19"	1	31	3-2713	Place Bolt	1
1	3-2366	Main Frame 21" H. P.	1	32	32149-1	Nut, Keps	4
2	3-2574	Deflector	1	33	322-7	Screw, Engine Mounting	3
3	3-2572	Bag Attachment	1	34	3-2565	Engine Shroud	1
4	32103-14	Wing Nut	1	*	3-2566	Shroud (Spin Start)	1
5	32104-58	Screw	2	35	3-2653	Decal	1
6	3-2644	Hinge Pin	1	37	3-2724	Muffler, Free Side	1
7	3-1846	Screw, Shoulder	2	38	3-2723	Muffler, Baffle	1
8	3-2656	Handle Latch	2	39	32140-17	Screw, Sems	2
9	3-3287	Spacer	2	40	3-2722	Muffler, Engine Side	1
10	3290-255	Hairpin Cotter	2	41	322-12	Screw	1
11	3-0700	Lower Handle	1	42	2-1039	Handle w/Grip	1
11	3-5860	Lower Handle - Recoil Start Only 19"		43	3-2654	Screw, Curved Head	5
12	3-0657	Nut, Handle Pivot	2	44	3-2815	Throttle Control Assembly For Recoil Start	1
13	3255-18	Lockwasher, Ext. Tooth	2	45	32149-2	Stop Nut	5
14	3-1478	Pivot Washer	4	46	3-0690	Bag Hanger	1
15	3-2637	Arm Assembly	4	47	218-75	Clip	1
16	3-2634	Pivot Arm, Left Rear & Right Front	2	48	32104-64	Screw, Self Tap	4
17	3-2664	Bushing	4	49	3-1824	Tank Shroud Bracket	1
18	3-0655	Pivot Screw	4	50	3-2772	Front Shroud Bracket	1
19	4-2600	Tire, Rear Wheel 8"	2	51	3290-191	Speed Nut	2
20	3-2563	Wheel, Rear 8", w/Bushing	2	52	3-0688	Bag Assembly	1
21	3-2652	Wheel Bolt	4	53	221-188	Engine (Recoil Start)	1
22	3-2564	Wheel, Front 6", w/Bushing	2	*	221-189	Engine (Spin Start)	1
23	3-2635	Pivot Arm, Left Front & Right Rear	2	*	Z121-15	Serial No. Plate	1
24	4-2610	Tire, Front Wheel 6"	2	54	3290-199	Speed Nut "U" Type	1
25	3296-5	3/8-24 Stop Nut	4	55	3-0650	Knob	4
26	3257-3	Key	1	56	3-1034	Washer	2
27	3-0658	Hub, Cutter Bar	1	57	32146-5	Stop Nut	2
28	3-0662	Cutter Bar 19"	1	*	3-2791	Thrtrl.Cntrl.Assy.-Spin Start	
28	3-0663	Cutter Bar 21" H. P.	1	60	3-5850	Remote Recoil Plate Assy.	1
29	3-2641	Anti-Scalp Dish	1	61	321-7	Screw	1
30	3253-6	Lockwasher, 7/16" Reg.	1	62	32149-2	Nut	1
				63	3-3008	Spacer 19" & 21" H. P.	1
				64	3290-133	Screw	1
				65	3-3287	Spacer	2
				66	3-4005	Funnel	1

*Not Illustrated

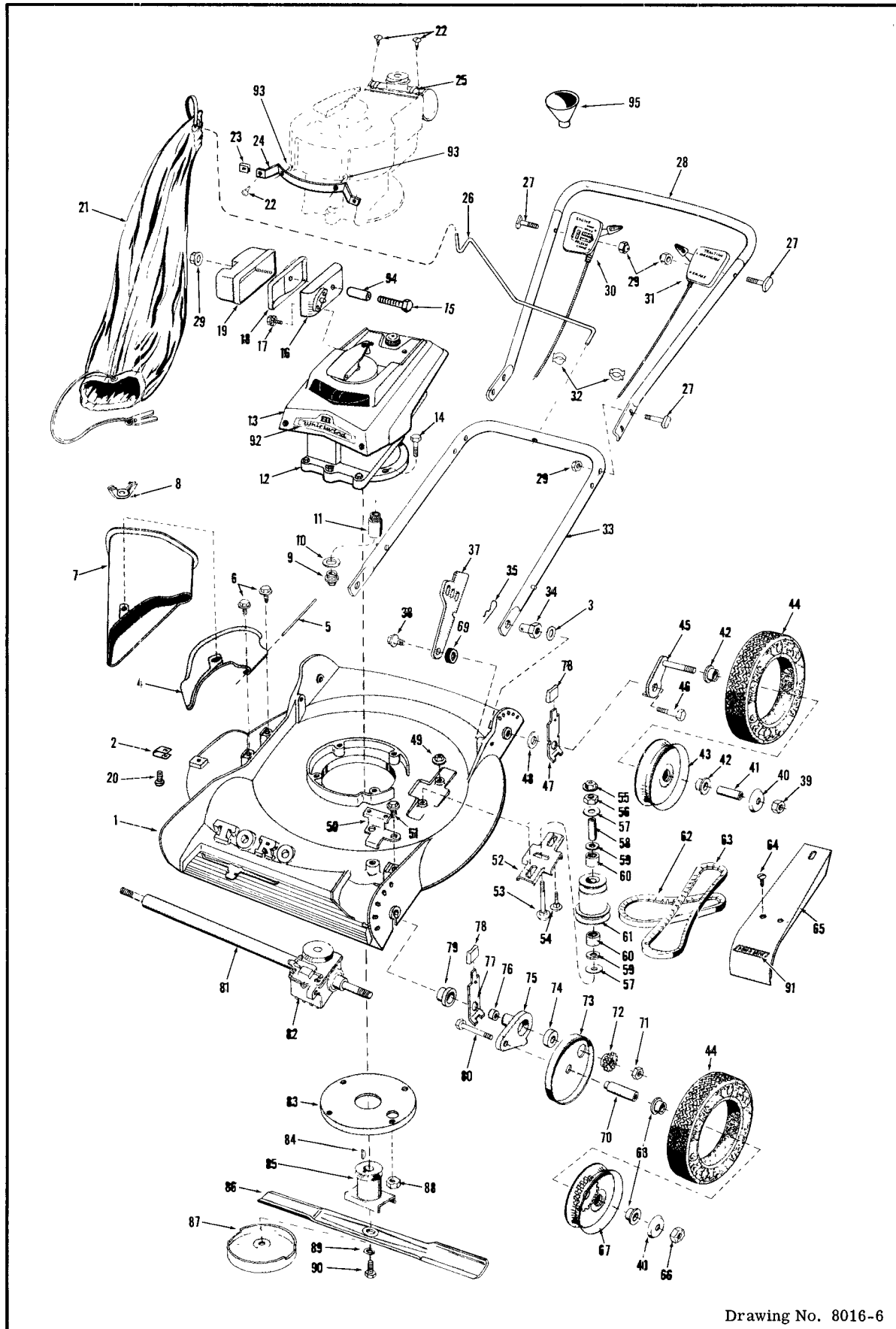
INSIST ON GENUINE TORO PARTS

IMPORTANT ORDERING INSTRUCTIONS

Repair parts are available from your TORO distributor or service dealer. To insure getting correct parts without delay, please furnish the following information:

1. Serial number of your mower as shown on the name plate.
2. Part number, description and quantity of each part required.
3. State whether parts should be shipped by mail or express.
All repair parts are shipped F. O. B. factory.
4. Name and address where parts are to be shipped.
5. Do not order by reference number; use part number only.

21" S.P. MOWER DRAWING



Drawing No. 8016-6

21" S.P. PARTS LIST

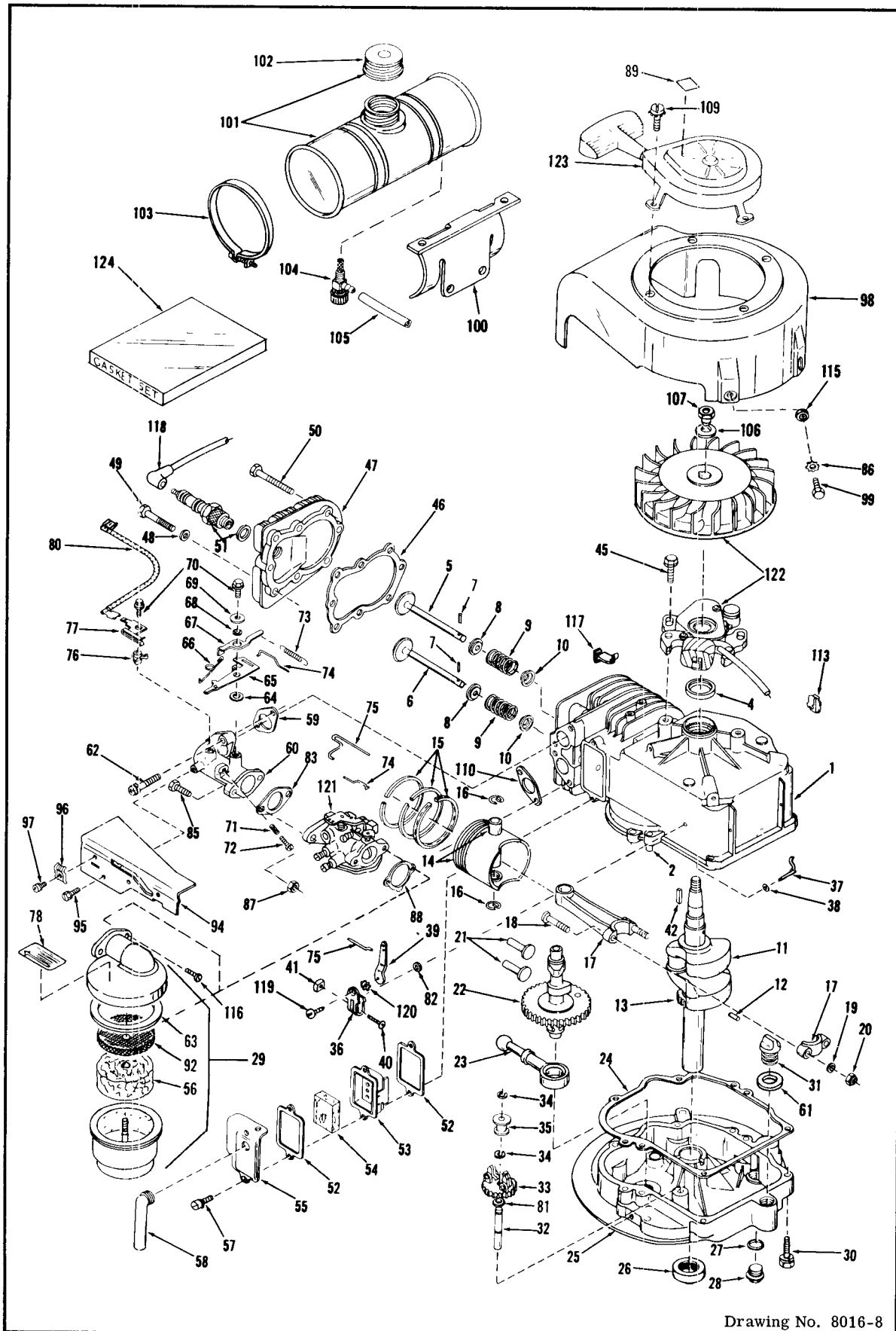
Ref. No.	Part No.	Description	No. Used	Ref. No.	Part No.	Description	No. Used
1	3-2484	Main Frame	1	50	3-2663	Bracket, Transmission	1
2	3290-190	Speed Nut	1	51	32104-31	Screw	2
3	3255-18	Lockwash. , Ext. Tooth	2	52	3-0751	Mounting Bracket	1
4	3-2574	Deflector	1	53	3-2642	Special Bolt	1
5	3-2644	Hinge-Pin	1	54	3230-16	Carriage Bolt	2
6	32104-58	Screw	2	55	32128-12	Nut, Lock	1
7	3-2572	Bag Attachment	1	56	3-2651	Nut, Idler	1
8	32103-14	Wing Nut	1	57	3-0750	Washer	2
**9	27244	Oil Drain	1	58	3-0748	Spindle	1
**10	27245	Gasket, Oil Drain	1	59	253-85	Oil Seal	2
11	3-0761	Extension, Oil Drain	1	60	252-50	Bearing	2
12	221-190	Engine	1	61	3-0747	Idler Pulley	1
13	3-2566	Engine Shroud	1	62	3-1183	Belt, Cutter Bar	1
14	322-13	Screw	3	63	3-1182	Belt, Traction	1
15	322-12	Screw	1	64	32104-60	Screw	2
16	3-2722	Muffler, Engine Side	1	65	3-2657	Belt Guard	1
17	32140-17	Screw, Sems	2	66	32146-6	Nut	2
18	3-2723	Baffle, Muffler	1	67	3-0742	Front Wheel W/Gear & Bushings (Ref. #68)	2
19	3-2724	Muffler, Free Side	1	68	3-1506	Bushing, Front Wheel	4
20	3290-133	Screw	1	69	3-3287	Spacer	2
21	3-0688	Bag Assembly	1	70	3-0741	Spindle	2
22	32104-59	Screw, Self-Tap	4	71	3296-5	Nut	2
23	3290-191	Speed Nut	2	72	3-0738	Gear	2
24	3-2772	Bracket, Front Shroud	1	73	3-0740	Wheel Cover	2
25	3-1824	Tank, Shroud Bracket	1	74	251-145	Bearing	2
26	3-0690	Hanger, Bag	1	75	3-0735	Pivot Arm, Left	1
27	3-2654	Screw	6	*	3-0736	Pivot Arm, Right	1
28	2-1039	Handle Assy, Upper	1	76	256-1	Bushing	2
29	32149-2	Nut, 1/4" N.C. Lock	6	77	3-2640	Arm Assy, Front Wheel	2
30	3-2791	Throttle Control Assy.	1	78	3-0650	Knob	4
31	3-2792	Clutch Control Assy.	1	79	3-2646	End Cap	2
32	WA-85	Clip	2	80	3211-11	Wheel Bolt	2
33	3-0700	Handle Assy., Lower	1	81	3-0720	Drive Shaft	1
34	3-0657	Nut, Handle Pivot	2	82	3-2660	Gear Case Assy. incl. Ref. #81	1
35	3290-255	Hairpin Cotter	2	83	3-2643	Grass Guard	1
36	3-3287	Spacer	2	84	3257-3	Key	1
37	3-2656	Handle Latch	2	85	3-0755	Hub, Cutter Bar	1
38	3-1846	Screw, Shoulder	2	86	3-0663	Cutter Bar	1
39	32146-9	Nut	2	87	3-2641	Anti-Scalp Dish	1
40	2-6710	Hub Cap	4	88	32149-1	Nut, 5/16" N.C. Lock	3
41	2-1120	Spindle, Rear Wheel	2	89	3253-6	Lockwasher, 7/16" Reg.	1
42	4-4550	Bushing	4	90	3-2713	Screw, Cutter Bar	1
43	4-2670	Rear Wheel W/Bushing (Ref. #42)	2	91	3-2645	Decal, Belt Guard	1
44	4-2600	Tire	4	92	3-2667	Decal, Front	1
45	3-0654	Pivot Arm, Left Rear	1	93	3-1034	Washer, Blower Hsg.	2
*	3-0641	Pivot Arm, Right Rear	1	*	3-4123	Decal, Rear	1
46	3-0655	Pivot Screw	2	*	3-2803	Caution Decal	1
47	3-2637	Arm Ass'y, Rear Wheel	2	*	Z-142	Plate, Serial No.	1
48	3-1478	Pivot Washer	2	94	3-3008	Spacer	1
49	3290-187	Nut, Lock	2	95	3-4005	Funnel	1

*Not Illustrated

**Obtain From Your Lawson Dealer

ENGINE DRAWING RECOIL START

FOR MODELS TE1-3010



Drawing No. 8016-8

ENGINE PARTS LIST

FOR MODEL TE1-3010

Ref. No.	Part No.	Description	No. Used
1	30600	Cylinder Assy. (Incl. #2 & 4)	1
2	26727	Pin, Dowel	2
4	*29183	Seal, Oil	2
5	29314	Valve, Intake (Standard)	1
5	29316	Valve, Intake (1/32" O. S.)	1
6	29313	Valve, Exhaust (Standard)	1
6	29315	Valve, Exhaust (1/32" O. S.)	1
7	20794	Pin, Valve Spring Retaining	1
8	26957	Cap, Upper Valve Spring	2
9	24772	Spring, Valve	2
10	21043	Cap, Lower Valve Spring	2
11	29222	Crankshaft Assy. (Incl. #12 & 13)	1
12	29783	Pin, Crankshaft Gear	1
13	27613	Gear, Crankshaft	1
14	27062	Piston & Pin Assembly (Standard) (Includes 2 of No. 16)	1
14	27084	Piston & Pin Assembly (.010 Oversize) (Includes 2 of No. 16)	1
14	27085	Piston & Pin Assembly (.020 Oversize) (Includes 2 of No. 16)	1
15	27565	Ring Set, Piston (Standard)	1
15	27566	Ring Set, Piston (.010 Oversize)	1
15	27567	Ring Set, Piston (.020 Oversize)	1
16	20381	Ring, Piston Pin Retaining	2
17	26743	Rod Assembly, Connecting (Includes Nos. 18, 19 & 20)	1
18	26706	Bolt, Connecting Rod	2
19	20747	Washer, Connecting Rod	2
20	27573	Nut, Lock	2
21	27241	Lifter, Valve	2
22	29614	Camshaft	1
23	29914	Pump Assembly Oil	1
24	*26750	Gasket, Mounting Flange	1
25	30686	Flange Assembly, Mounting (Includes Nos. 26, 27, 28 & 32)	1
26	*26208	Seal, Oil	1
27	*28833	Gasket, Drain Plug	1
28	30572	Plug, Oil Drain	1
29	30694	Cleaner Assembly, Oil Bath (Includes Nos. 56, 63, 78 & 92)	1
30	650488	Screw, Hex Hd. Cap, Sems 1/4-20 x 1-1/4	6
31	27625	Plug, Oil Filler	1
32	30574	Shaft, Mechanical Governor	1
33	30591	Gear Assy. Governor	1
34	29193	Ring, Retaining	2
35	30588	Spool, Governor	1
36	29916	Clamp, Governor Lever	1
37	30589	Rod, Governor (Incl. # 38 & 82)	1
38	28277	Washer, Flat	1
39	29917	Lever, Governor	1
40	29826	Screw, Socket Hd. Cap 10-32 x 3/4	1
41	29216	Nut, Square 10-32	1

Ref. No.	Part No.	Description	No. Used
42	27247	Key, Flywheel	4
45	650489	Screw, Hex Hd. Cap Sems 1/4-20 x 3/4	2
46	*29953	Gasket, Cylinder Head	1
47	30579	Head, Cylinder	1
48	26073	Washer, 5/16"	5
49	6021	Screw, Hex Hd Cap 5/16-18 x 1-1/2	5
50	6023	Screw, Hex Hd. Cap 5/16-18 x 2	3
51	21943	Plug, Spark (Champion J-8 or Equiv.)	1
52	*27234	Gasket, Valve Spring Cover	2
53	27810	Body, Assy. Breather	1
54	27233	Element, Filter	1
55	27626	Cover, Valve Spring	1
56	30695	Element, Hair	1
57	650128	Screw, Phil. Fil. Hd. Sems 10-24 x 1/2	2
58	27627	Tube, Breather	1
59	*30188	Gasket, Intake	1
60	29187	Pipe, Intake	1
61	*29673	Gasket, Oil Filler	1
62	650176	Screw, Phil. Fil. Hd. Sems 1/4-20 x 1	2
63	30696	Gasket, Air Cleaner	1
64	28558	Washer, Spring Wave	1
65	29934	Lever, Control	1
66	29484	Spring, Control Lever	1
67	30039	Lever, R. P. M. Adjusting	1
68	28562	Bushing, R. P. M. Adjusting Lever	1
69	28563	Washer, Flat	1
70	28762	Screw, Slotted Hex Hd. 10-24 x 1/2	2
71	28569	Spring, Compression	1
72	6674	Screw, Fil. Hd. Mach. 8-32 x 3/4	1
73	30581	Spring, Extension	1
74	29818	Link, Choke	1
75	30580	Link, Throttle	1
76	29209	Washer, Insulating	1
77	29210	Terminal	1
78	30697	Decal, Air Cleaner	1
80	30582	Wire, Ground	1
81	30590	Washer, Flat	1
82	30587	Ring, Retaining	1
83	*30189	Gasket, Carburetor	1
85	6201	Screw, Hex Hd. Cap 1/4-28 x 7/8	2
86	27070	Lockwasher, 1/4" E. T.	2
87	29752	Nut, Hex Jam, 1/4-28	2
88	*27272	Gasket, Cleaner Bracket	1
89	30595	Decal, Starter	1
92	30731	Screen, Oil Bath	1
94	30411	Cover, Speed Control	1
95	28763	Screw, Slotted Hex Washer Hd. 10-24 x 7/16	2
96	27793	Clip, Conduit	1
97	28942	Screw, Slotted Hex Hd. Sems 10-32 x 3/8	1
98	29963	Housing, Blower	1
99	650240	Screw, Hex Hd. Cap 1/4-20 x 5/8	2

*Gasket Set

(Continued Next Page)

INSIST ON GENUINE TORO PARTS

ENGINE PARTS LIST - Cont'd.

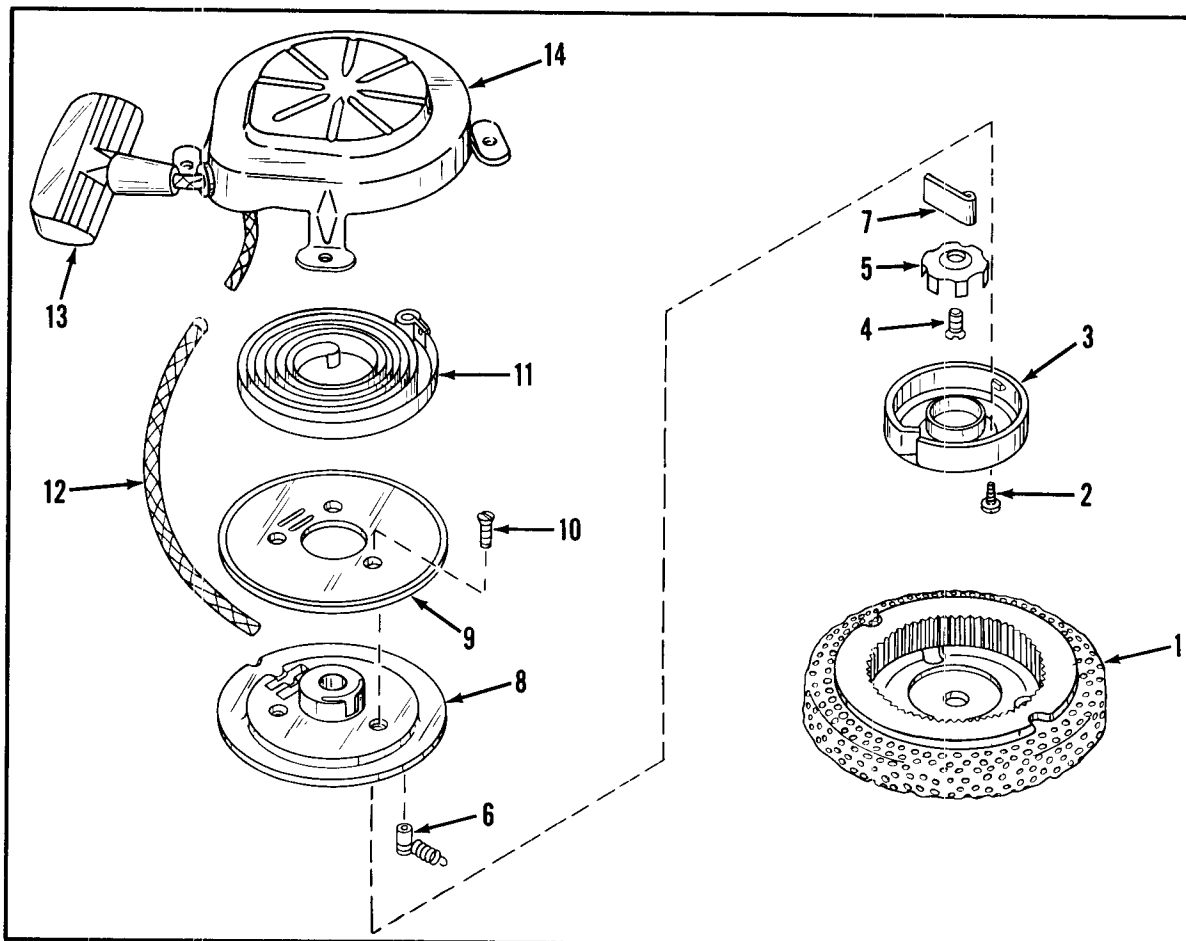
FOR MODELS TEI-3010

Ref. No.	Part No.	Description	No. Used
100	3-1824	Bracket, Fuel Tank Mounting	1
101	29245	Tank, Fuel (Incl. # 102)	1
102	27799	Cap, Fuel Fill	1
103	29200	Strap, Fuel Tank	2
104	29683	Strainer & Shut-off, Fuel	1
105	26821	Line, Fuel	1
106	650490	Washer	1
107	650491	Nut, Flywheel	1
109	29716	Screw, Phil. Fil. Hd. Mach. 1/4-28 x 7/16	4
110	*26754	Gasket, Muffler	1
113	27275	Clip, Lead Wire	1
115	3-1034	Washer, Plain Flat	1

Ref. No.	Part No.	Description	No. Used
116	28820	Screw, Fil. Hd. Sems 10-32 x 1/2	2
117	29406	Clip, Fuel Line	1
118	610118	Cover, Spark Plug	1
119	29919	Screw, Pan Slotted Hd. S. T. 8-32 x 3/8	1
120	29918	Lockwasher, #8 E. T.	1
121	630880	Carburetor, Power Products No. 0234-34	1
122	610676	Magneto, Phelon	1
123	590359	Starter, Rewind	1
124	30601	Gasket, Set (Includes Item Marked *)	1

* Gasket Set

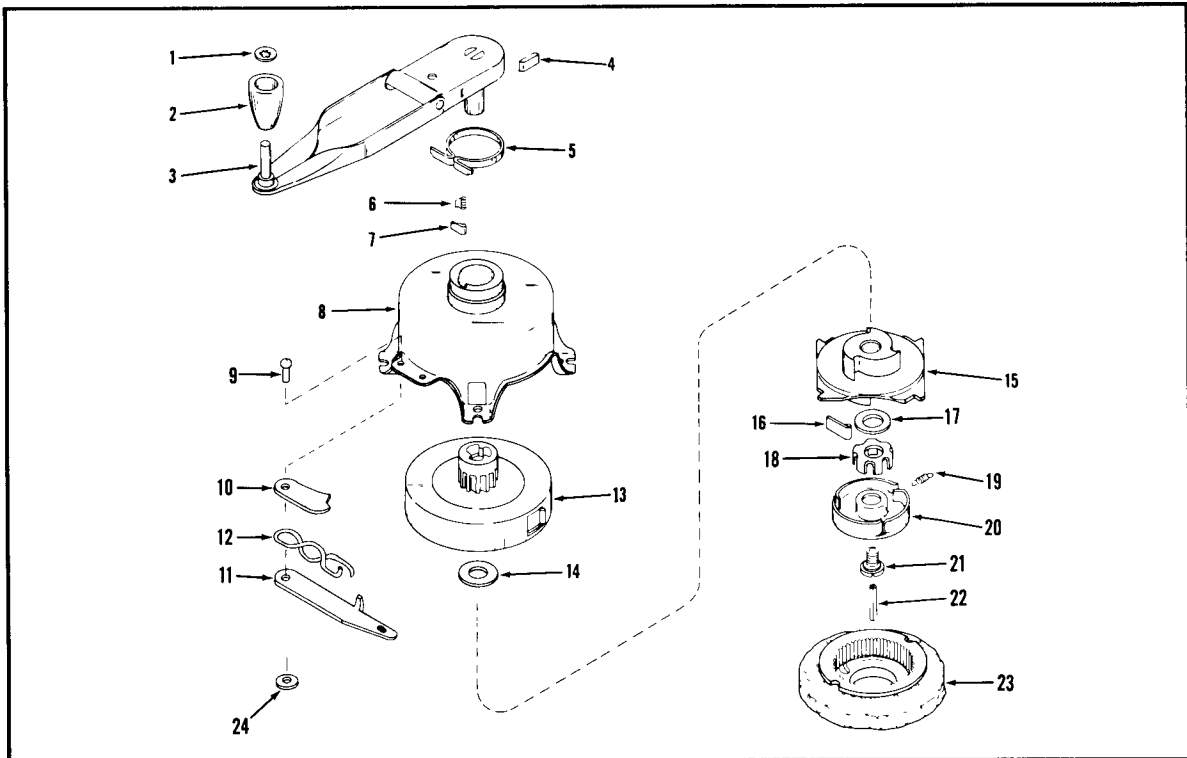
REWIND STARTER No. 590359



Ref. No.	Part No.	Description	No. Used
1	29225	Hub & Screen Assembly	1
2	590152	Screw, S. T. #8-32 x 7/16	2
3	590153	Retainer	1
4	590150	Screw, Th'd Lock, No. 10-32 x 1/2	1
5	590151	Brake	1
6	27515	Bushing & Spring Assembly	1
7	590148	Dog, Starter	1

Ref. No.	Part No.	Description	No. Used
8	590272	Hub, Starter	1
9	590273	Pulley, Sheave	1
10	590275	Screw, S. T. Flat Hd., No. 10-32 x 1/2	3
11	28289	Spring, Rewind	1
12	30691	Rope	1
13	590288	Handle	1
14	30629	Cover Assembly, Housing	1

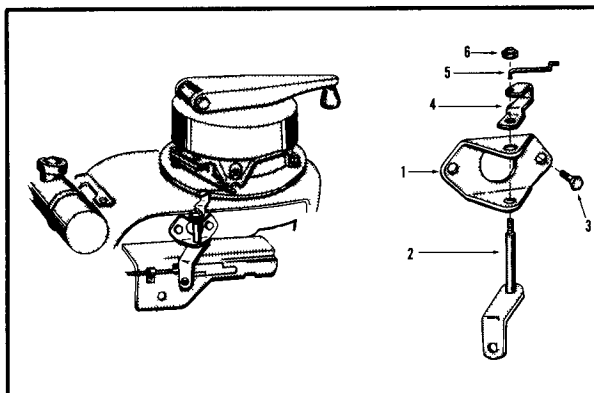
SPIN START No. 590360



Ref. No.	Part No.	Description	No. Used
1	29227	Fastener, Handle	1
2	29228	Knob, Starter Handle	1
3	29950	Handle Assembly	1
4	29936	Dog, Wind	1
5	29935	Band, Brake	1
6	29938	Spring, Lock Dog	1
7	29937	Dog, Lock	1
8	29949	Housing Assembly Starter (Incl. # 9 thru 12 & 24)	1
9	29946	Stud, Release Lever	1
10	29944	Lever, Release	1
11	29945	Lever, Trip	1
12	29943	Spring, Release Lever	1

Ref. No.	Part No.	Description	No. Used
13	30642	Spring and Keeper	1
14	29941	Washer, Bearing	1
15	29947	Hub & Cover	1
16	590148	Dog, Starter	3
17	29734	Washer, Thrust	1
18	29717	Brake	1
19	29940	Spring, Retainer	1
20	29942	Retainer	1
21	29733	Screw, Brake (Left Hand)	1
22	29736	Pin, Centering	1
23	29939	Hub & Screen	1
24	30151	Washer, Release Lever	1

REMOTE CONTROL LINKAGE

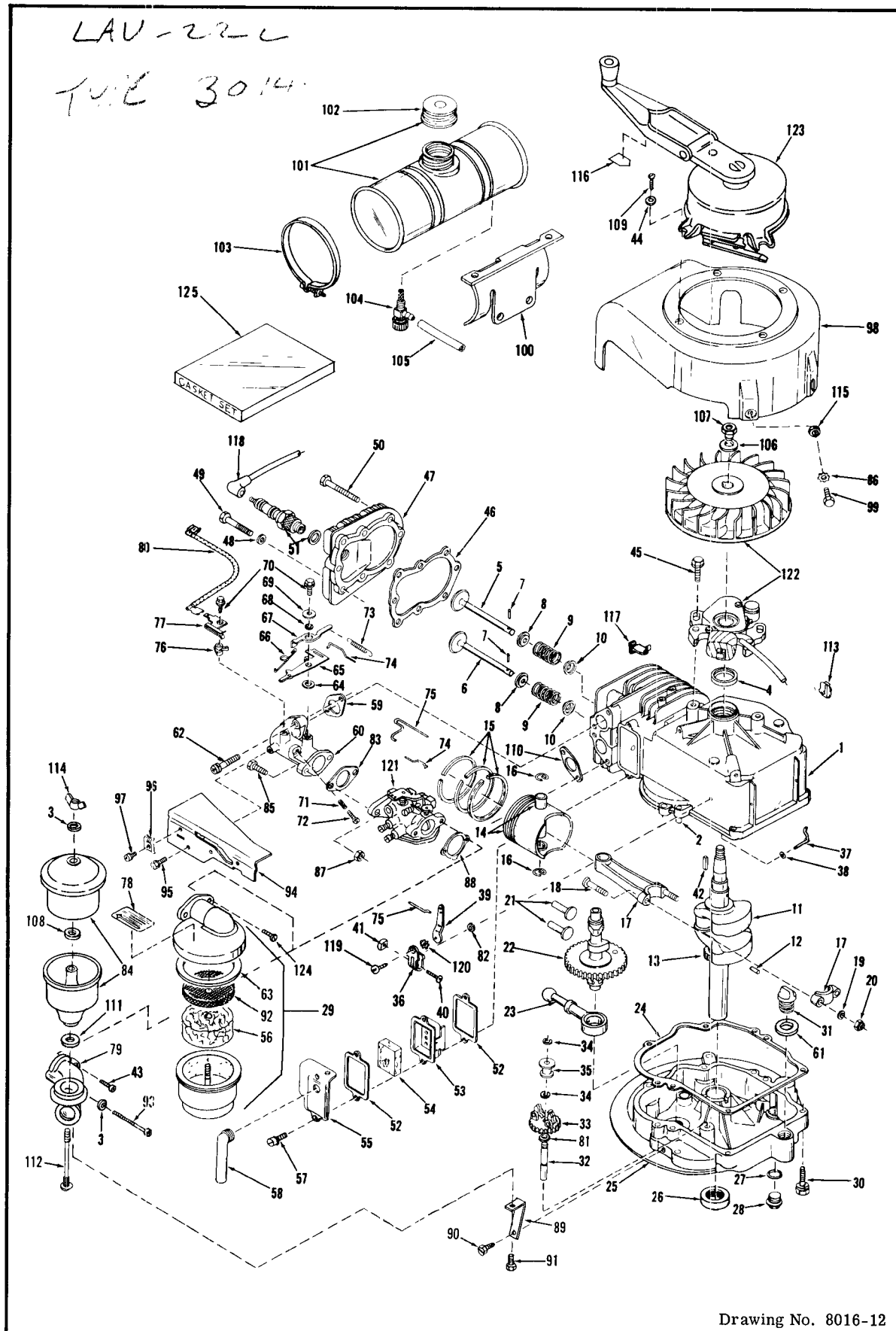


Ref. No.	Part No.	Description	No. Used
1	3-4368	Attach Bracket	1
2	3-3923	Lever Assembly	1
3	32104-63	Screw	2
4	3-2861	Crank	1
5	3-2835	Link	1
6	32127-12	Nut	1

INSIST ON GENUINE TORO PARTS

ENGINE DRAWING SPIN START

FOR MODELS TE1-3014 and TE2-3014



ENGINE PARTS LIST

FOR MODELS TE1-3014 and TE2-3014

Ref. No.	Part No.	Description	No. Used
1	30600	Cylinder Assy. (Inc. #2 & 4)	1
2	26727	Pin, Dowel	2
3	27183	Washer, Fibre	2
4	*29183	Seal, Oil	1
5	29314	Valve, Intake (Standard)	1
5	29316	Valve, Intake (1/32" O.S.)	1
6	29313	Valve, Exhaust (Standard)	1
6	29315	Valve, Exhaust (1/32" O.S.)	1
7	20794	Pin, Valve Spring Retaining	2
8	26957	Cap, Upper Valve Spring	2
9	24772	Spring, Valve	2
10	21043	Cap, Lower Valve Spring	2
11	29222	Crankshaft Assy. (Incl. Nos. 12 & 13)	1▼
11	29223	Crankshaft Assy. (Incl. Nos. 13 & 12)	1●
12	29783	Pin, Crankshaft Gear	1
13	27613	Gear, Crankshaft	1
14	27062	Piston & Pin Assy. (Std.) Incl. 2 of # 16)	1▼
14	27084	Piston & Pin Assy. (.010 O.S.) (Incl. 2 of # 16)	1▼
14	27085	Piston & Pin Assy. (.020 O.S.) (Incl. 2 of # 16)	1▼
14	27841	Piston & Pin Assy. (Std.) (Incl. 2 of # 16)	1●
14	27861	Piston & Pin Assy. (.010 O.S.) (Incl. 2 of # 16)	1●
14	27862	Piston & Pin Assy. (.020 O.S.) (Incl. 2 of # 16)	1●
15	27565	Ring Set, Piston (Standard)	1
15	27566	Ring Set, Piston (.010 O.S.)	1
15	27567	Ring Set, Piston (.020 O.S.)	1
16	20381	Ring, Piston Pin Retaining	2
17	26743	Rod Assy. Connecting (Incl. # 18, 19 & 20)	1
18	26706	Bolt, Connecting Rod	2
19	20747	Washer, Connecting Rod	2
20	27573	Nut, Lock	2
21	27241	Lifter, Valve	2
22	29614	Camshaft	1
23	29914	Pump Assy., Oil	1
24	*26750	Gasket, Mounting Flange	1
25	30686	Flange Assy., Mounting (Incl. # 26, 27, 28 & 32)	1
26	*26208	Seal, Oil	1
27	*28833	Gasket, Drain Plug	1
28	30572	Plug, Oil Drain	1
29	30694	Cleaner Assy., Oil Bath (Incl. # 56, 63, 78 & 92)	1
30	650488	Screw, Hex Hd Cap, Sems 1/4-20 x 1-1/4	6
31	27625	Plug, Oil Filler	1
32	30574	Shaft, Mechanical Governor	1
33	30591	Gear Assy., Governor	1
34	29193	Ring, Retaining	2
35	30588	Spool, Governor	1
36	29916	Clamp, Governor Lever	1
37	30589	Rod, Governor (Incl. # 38 & 82)	1
38	28277	Washer, Flat	1
39	29917	Lever, Governor	1
40	29826	Screw, Socket Hd. Cap, 10-32 x 3/4	1

Ref. No.	Part No.	Description	No. Used
41	29216	Nut, Square 10-32	1
42	27247	Key, Flywheel	1
43	28597	Screw, Fil. Hd. Sems 10-32 x 3/4	1
44	8345	Washer, Flat	4
45	650489	Screw, Hex Hd. Cap Sems 1/4-20 x 3/4	2
46	*29953	Gasket, Cylinder Head	1
47	30579	Head, Cylinder	1
48	26073	Washer, 5/16"	5
49	6021	Screw, Hex Hd. Cap, 5/16-18 x 1-1/2	5
50	6023	Screw, Hex Hd. Cap, 5/16-18 x 2	3
51	21943	Plug, Spark (Champion J-8 or Equiv.)	1
52	*27234	Gasket, Valve Spring Cover	2
53	27810	Body Assy, Breather	1
54	27233	Element, Filter	1
55	27626	Cover, Valve Spring	1
56	30695	Element, Hair	1
57	650128	Screw, Phil. Fil. Hd. Sems 10-24 x 1/2	2
58	27627	Tube, Breather	1
59	*30188	Gasket, Intake	1
60	29187	Pipe, Intake	1
61	*29673	Gasket, Oil Filler	1
62	650176	Screw, Phil. Fil. Hd. Sems 1/4-20 x 1	2
63	30696	Gasket, Air Cleaner	1
64	28558	Washer, Spring Wave	1
65	29934	Lever, Control	1
66	29484	Spring, Control Lever	1
67	30039	Lever, R. P. M. Adjusting	1
68	28562	Bushing, R. P. M. Adj. Lever	1
69	28563	Washer, Flat	1
70	28762	Screw, Slotted Hex Hd. 10-24 x 1/2	2
71	28569	Spring, Compression	1
72	6674	Screw, Fil. Hd. Mach. 8-32 x 3/4	1
73	30581	Spring, Extension	1
74	29818	Link, Choke	1
75	30580	Link, Throttle	1
76	29209	Washer, Insulating	1
77	29210	Terminal	1
78	30697	Decal, Air Cleaner	1
79	30687	Elbow, Air Cleaner	1
80	30582	Wire, Ground	1
81	30590	Washer, Flat	1
82	30587	Ring, Retaining	1
83	*30189	Gasket, Carburetor	1
84	27166	Cleaner Assy, Oil Bath (Incl. # 108)	1
85	6201	Screw, Hex Hd. Cap 1/4-28 x 7/8	2
86	27070	Lockwasher, 1/4" E. T.	2
87	29752	Nut, Hex Jam, 1/4-28	2
88	*27272	Gasket, Cleaner Bracket	1
89	30418	Bracket, Elbow	1
90	29511	Screw, Washer Hd. 1/4-20 x 7/16	1
91	30688	Screw, Hex Hd. Cap Sems 1/4-20 x 7/16	1

▼ Model TE 1-3014

● Model TE 2-3014

* Gasket Set

(Continued Next Page)

INSIST ON GENUINE TORO PARTS

ENGINE PARTS LIST - Cont'd.

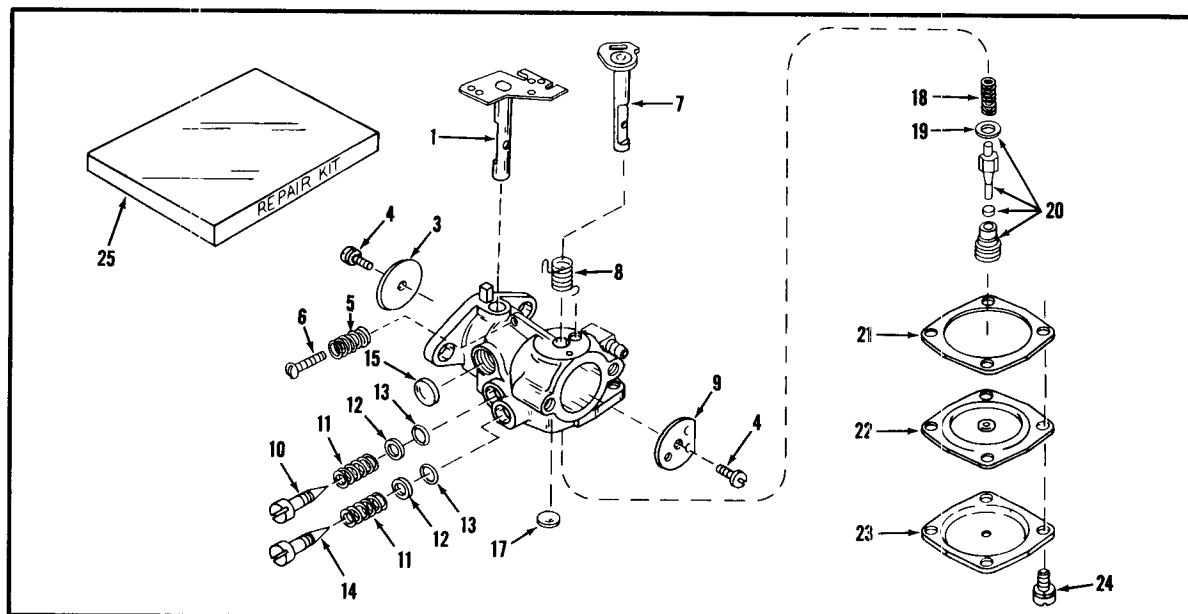
FOR MODELS TE1-3014 and TE2-3014

Ref. No.	Part No.	Description	No. Used
92	30731	Screen, Oil Bath	1
93	30689	Screw, Fil. Hd. 10-32 x 2-1/2	1
94	30411	Cover, Speed Control	1
95	28763	Screw, Slotted Hex Washer Hd. 10-24 x 7/16	2
96	27793	Clip, Conduit	1
97	28942	Screw, Slotted Hex Hd. Sems 10-32 x 3/8	1
98	29933	Housing, Blower	1
99	650240	Screw, Hex Hd. Cap, 1/4-20 x 5/8	2
100	3-1824	Bracket, Fuel Tank Mounting	1
101	29245	Tank, Fuel (Incl. # 102)	1
102	27799	Cap, Fuel Filler	1
103	29200	Strap, Fuel Tank	2
104	29683	Strainer & Shut-off, Fuel	1
105	26821	Line, Fuel	1
106	650490	Washer	1
107	650491	Nut, Flywheel	1
108	26652	"O" Ring	1
109	29716	Screw, Phil. Fil. Hd. Mach. 1/4-28 x 7/16	4

Ref. No.	Part No.	Description	No. Used
110	*26754	Gasket, Muffler	1
111	27165	Gasket, Air Cleaner to Elbow	1
112	27933	Bolt, Air Cleaner	1
113	27275	Clip, Lead Wire	1
114	9577	Nut, Wing	1
115	3-1034	Washer, Plain Flat	1
116	30595	Decal, Starter	1
117	29406	Clip, Fuel Line	1
118	610118	Cover, Spark Plug	1
119	29919	Screw, Pan Slotted Hd. S. T. 8-32 x 3/8	1
120	29918	Lockwasher, #8 E. T.	1
121	630880	Carburetor, Power Products No. 0234-34	1
122	610676	Magneto, Phelon	1
123	590360	Starter, Ratchet	1
124	28820	Screw, Fil. Hd. Sems 10-32 x 1/2	2
125	30601	Gasket Set (Includes Items Marked *)	1

* Gasket Set

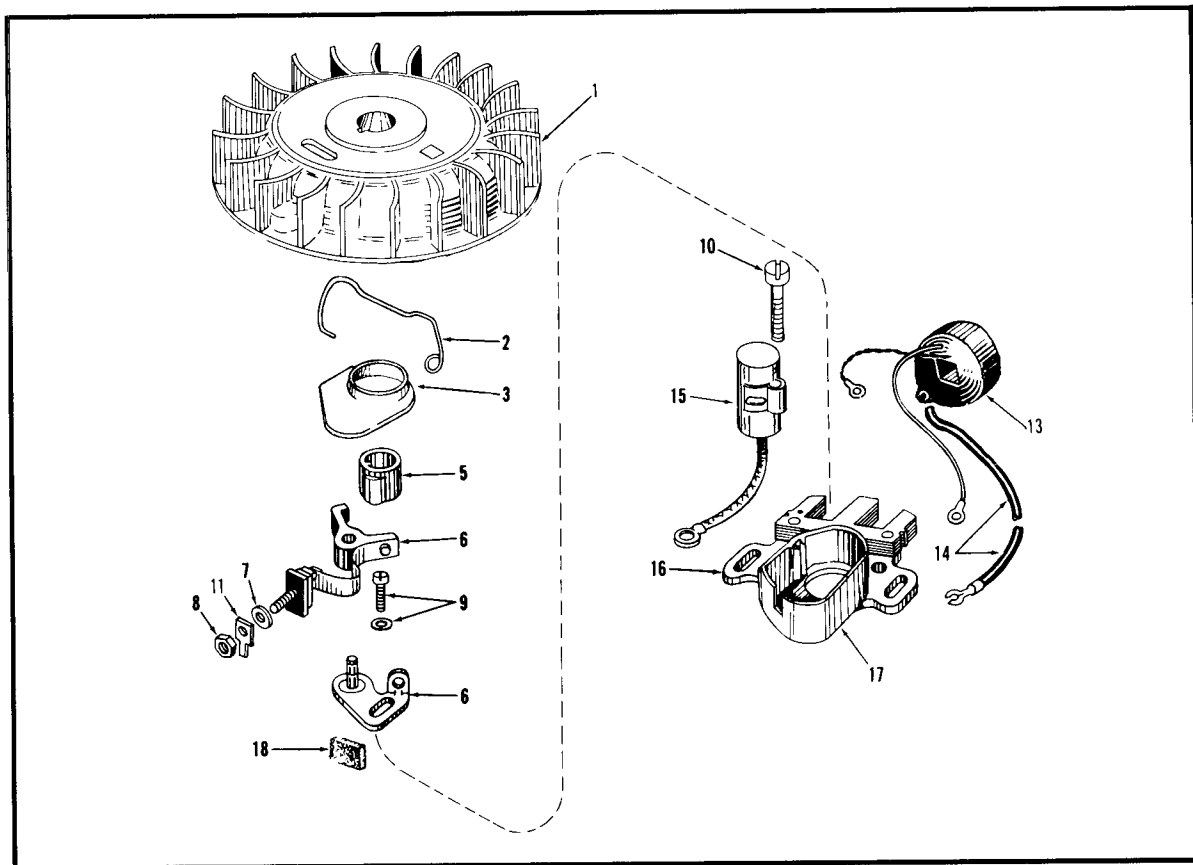
CARBURETOR No. 630880



Ref. No.	Part No.	Description	No. Used
1	630876	Shaft & Lever, Carburetor	1
3	630733	Shutter, Throttle	1
4	650476	Screw, 4-40 x 3/16	2
5	630766	Spring	1
6	650417	Screw, 8-32 x 3/4	1
7	630877	Shaft & Lever, Choke	1
8	630757	Spring, Choke Return	1
9	630758	Shutter, Choke	1
10	630767	Screw, Idle Adjustment	1
11	630738	Spring, Adjustment Screw	2
12	630739	Washer, Adjustment Screw	2
13	*630740	"O" Ring	2

Ref. No.	Part No.	Description	No. Used
14	630737	Screw, High Speed Adjust.	1
15	*630748	Plug, Welch	1
17	*630746	Plug, Welch	1
18	630741	Spring	1
19	*630742	Gasket	1
20	*630753	Needle Valve & Seat Assy.	1
21	*630750	Gasket	1
22	*630749	Diaphragm Assembly	1
23	630751	Cover	1
24	650453	Screw, 6-32 x 11/32	4
25	630752	Repair Kit (Includes Items Marked *)	1

MAGNETO No. 610676 (Phelon)



Ref. No.	Part No.	Description	No. Used
1	30569	Flywheel	1
2	30551	Spring, Breaker Box	1
3	30550	Cover, Breaker Box Dust	1
5	30552	Cam, Breaker	1
6	30547	Breaker Assembly	1
7	610385	Washer, Terminal	1
8	610408	Nut, Terminal	1
9	29181	Screw & Washer, Breaker	1

Ref. No.	Part No.	Description	No. Used
10	610593	Screw, Condenser Fastening	1
11	29686	Tab, Ground Terminal	1
13	30546	Coil Assembly	1
14	30554	Wire, Ignition Lead	1
15	30548	Condenser	1
16	30545	Core & Plate Group	1
17	30544	Stator Assy. (Incl. #2 thru 18)	1
18	30549	Felt, Cam Wiper	1

Warranty

The Manufacturer warrants each new piece of equipment sold to be free of defects in material and workmanship. For one year from the purchase date of consumer line equipment or 45 days if sold for commercial use, Toro Manufacturing Corporation will repair or replace for the original purchaser, free of charge, through any Authorized Service Dealer, any part or parts found at our factory in Minneapolis, Minnesota, to be defective under normal use and service. All institutional equipment is warranted for ninety (90) days from the purchase date.

This Warranty does not obligate the Manufacturer to bear the cost of transportation charges in con-

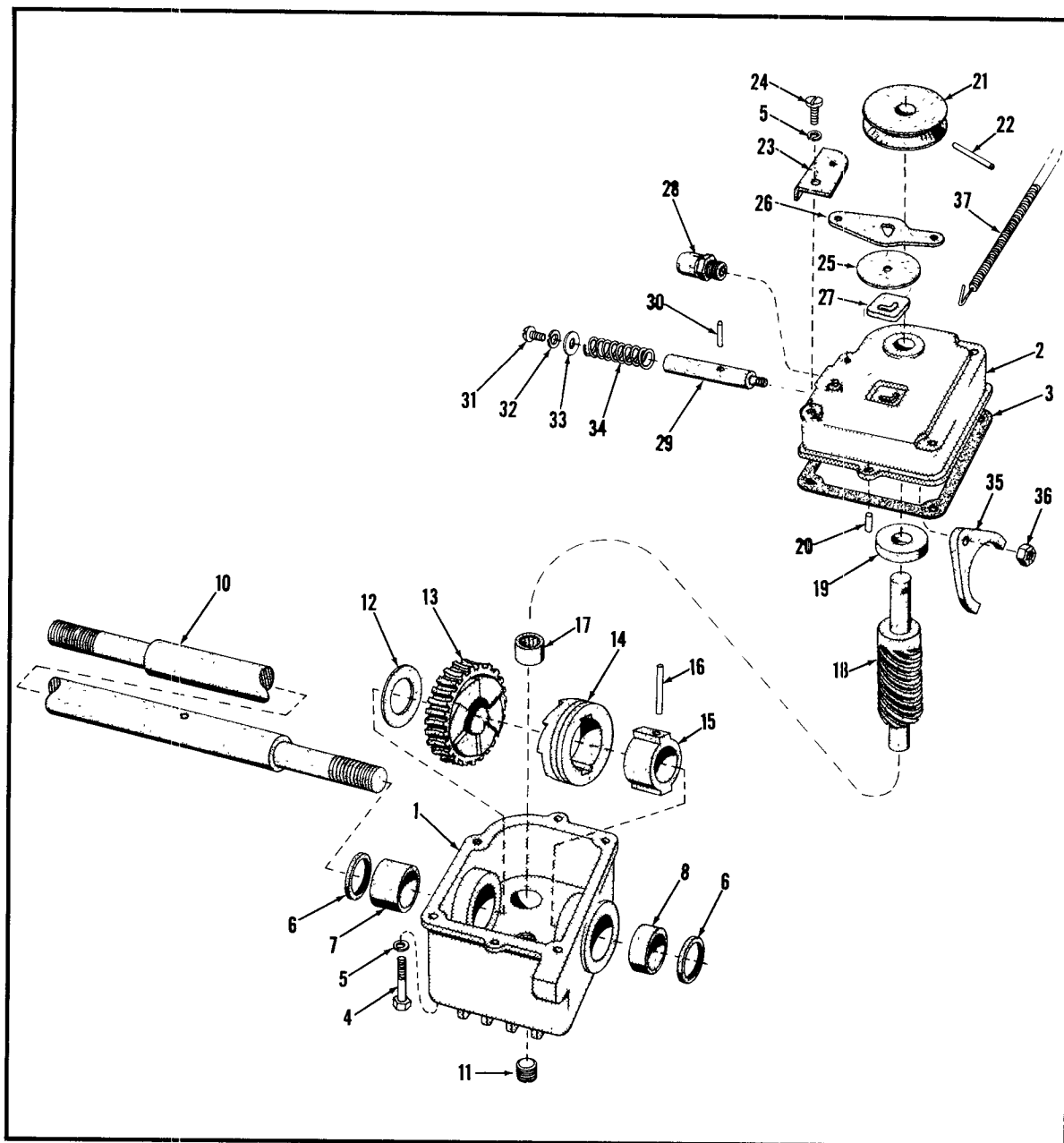
nection with the replacement or repair of defective parts -- nor shall it apply to a machine upon which repairs or alterations have been made, unless authorized by the manufacturer.

This Warranty does not include nor cover standard accessories produced by other manufacturers. Such accessories have separate warranties by their respective manufacturers . . . and repair or exchange will be made on the basis of such warranties, and the policies authorized by them shall be adhered to.

This Warranty is in lieu of all other warranties expressed or implied.

GEAR CASE ASSEMBLY

(21" S.P.)



Ref. No.	Part No.	Description	No. Used
1	3-0717	Gear Case	1
2	3-0725	Cover, Gear Case	1
3	3-0734	Casket	1
4	321-18	Screw, $\frac{1}{4}$ " N. C. x $2\frac{1}{4}$ "	4
5	3253-3	Lockwasher, $\frac{1}{4}$ " Reg.	5
6	253-86	Oil Seal	2
7	256-109	Bearing	1
8	256-110	Bearing	1
10	3-0720	Shaft, Drive	1
11	285-10	Pipe Plug	1
12	3-0724	Washer, Thrust	1
13	3-0723	Worm Gear	1
14	3-0722	Clutch Jaw	1
15	3-0721	Sleeve	1
16	32121-40	Pin	1
17	252-51	Bearing	1
18	3-0726	Worm Shaft	1
19	251-144	Bearing	1

Ref. No.	Part No.	Description	No. Used
20	32121-1	Pin	2
21	3-0727	Pulley	1
22	32121-37	Pin, Pulley to Shaft	1
23	3-2655	Shifter Arm Guide	1
24	32113-3	Screw, $\frac{1}{4}$ " N. C. x $3/8$ "	1
25	3-2615	Trans. Dust Cap	1
26	3-0732	Shifter Arm	1
27	3-0681	Latch Plate	1
28	302-14	Vent	1
29	3-2662	Shifter Rod	1
30	32121-23	Pin, In Shift Rod	1
31	3251-2	Screw, 10-24 x $\frac{1}{2}$ "	1
32	3253-17	Lockwasher, #10 Reg.	1
33	3256-14	Washer, #10 S. A. E.	1
34	3-0731	Spring	1
35	3-0730	Shifter Fork	1
36	3296-12	Nut, 10-24 Elastic Stop	1
37	3-2792	Control, Clutch	1