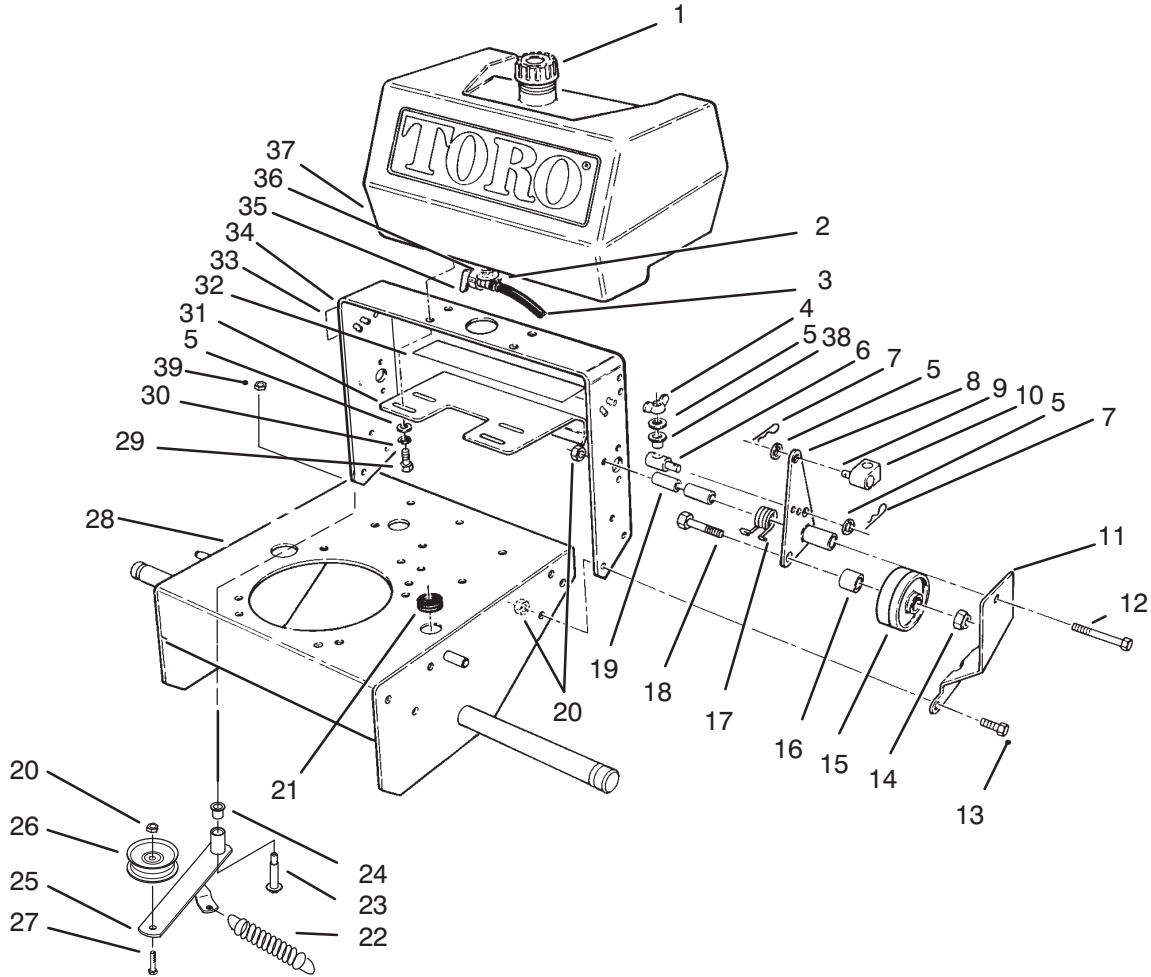




MODEL NO. 30166-690001 & UP **PARTS CATALOG**

ProLine® MIDSIZE TRACTION UNIT
12.5 HP Kawasaki Gear Drive



C-2098

FRAME ASSEMBLY

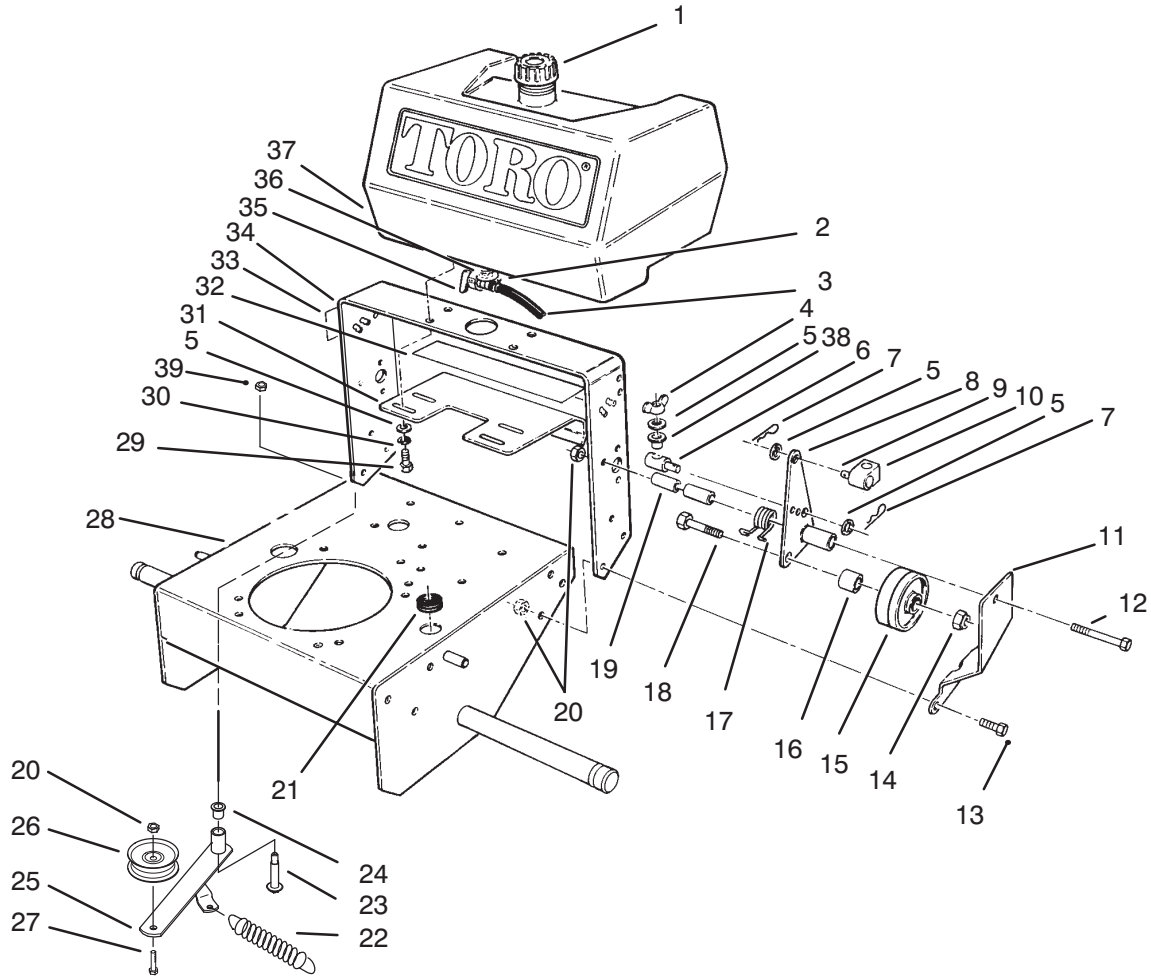
Ref. No.	Part No.	Description	No. Used
1	55-3570	Cap - Fuel Tank	1
2	2412-98	Clamp - Fuel line	1
3	47-2982	Hose - Fuel	1
4	32103-25	Nut - Wing	2
5	3256-23	Washer - Flat	10
6	68-9690	Fitting - Rod	2
7	3290-307	Pin - Cotter	4
8	74-0220	Idler - Bracket L.H.	1
*	74-0230	Idler - Bracket R.H.	2
9	283-6	Pin - Clevis	2
10	74-0521	Fitting - Rod	2
11	67-6380	Bracket - Support L.H.	1
*	67-6370	Bracket - Support R.H.	1
12	323-16	Screw - Hex. Hd.	2
13	323-6	Screw - Hex. Hd.	6
14	3296-23	Nut - Lock	2
15	51-4480	Idler - Wheel	2

Ref. No.	Part No.	Description	No. Used
16	51-4490	Spacer - Idler Wheel	2
17	51-4380	Spring - Torsion L.H.	1
*	51-4370	Spring - Torsion R.H.	1
18	51-4450	Screw - Leveler	2
19	74-0040	Spacer - Pivot Idler	4
20	3296-39	Nut - Lock	8
21	237-124	Grommet	1
22	68-2190	Spring - Extension	1
23	27-6230	Bolt - Wheel	1
24	256-155	Bushing	2
25	16-7509	Lever - Idler (Incl. Ref. #24)	1
26	62-4540	Pulley - Idler	1
27	323-8	Screw - Hex Hd. Cap	1
28	93-1156	Frame	1
29	322-4	Screw - Hex. Hd.	4
30	3253-4	Washer - Lock	4

*Not Illustrated

© The TORO Company -1995 / 1996 Rev.
All Rights Reserved

TPS



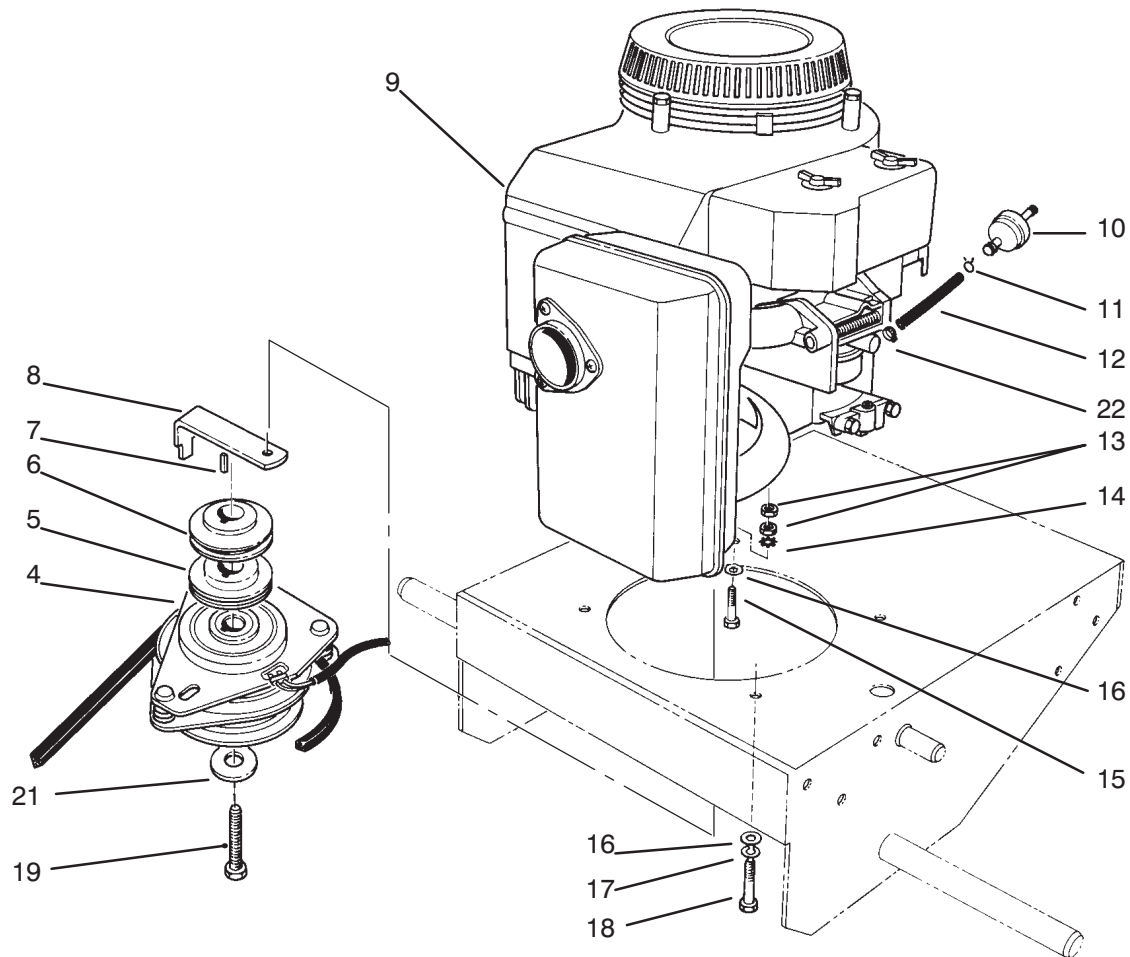
C-2098

FRAME ASSEMBLY(Continued)

Ref. No.	Part No.	Description	No. Used
31	66-7400	Plate - Control	1
32	82-7750	Decal - Ground Speed	1
33	74-0490	Decal - Fuel Shut Off	1
34	74-0360	Frame - Rear	1
35	74-0510	Valve - Fuel	1

Ref. No.	Part No.	Description	No. Used
36	237-7	"O"Ring	1
37	82-8440	Tank - Fuel	1
38	52-2890	Bushing	2
39	3296-6	Nut - Lock	1
*	71-3040	Replacement Axle Kit	1

* Not Illustrated

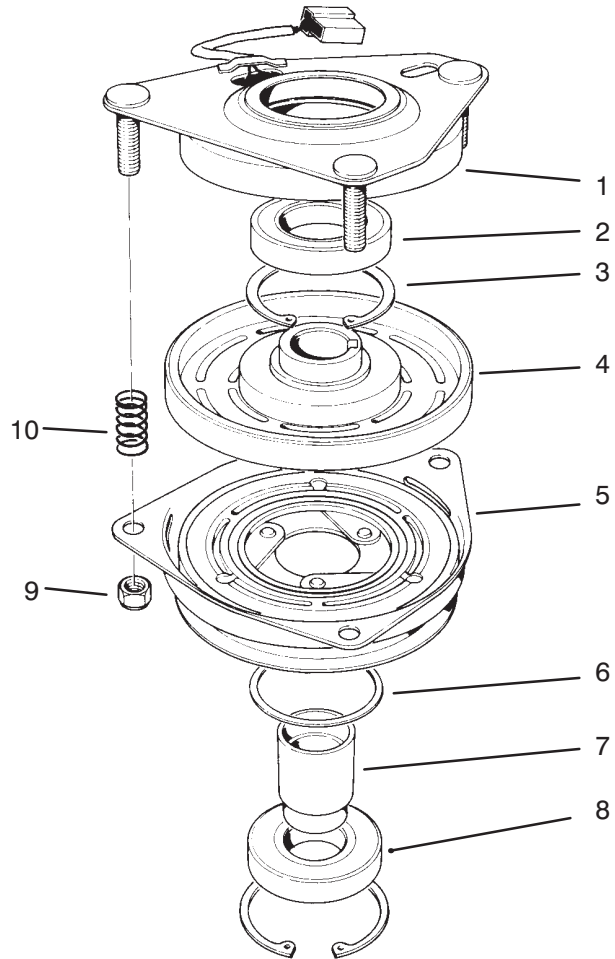


C-2099

ENGINE & CLUTCH ASSEMBLY

Ref. No.	Part No.	Description	No. Used
4	54-3200	Clutch Brake Assembly	1
5	74-0050	Sheave - Lower Half	1
6	74-0060	Sheave - Upper Half	1
7	92-5436	Key	1
8	51-4540	Retainer - Clutch	1
9		Engine - Kawasaki Model FB460V Type KS08	1
10	56-6360	Fuel - Filter	1
11	2412-98	Clamp - Fuel Line	2
12	47-2982	Hose - Gas	1

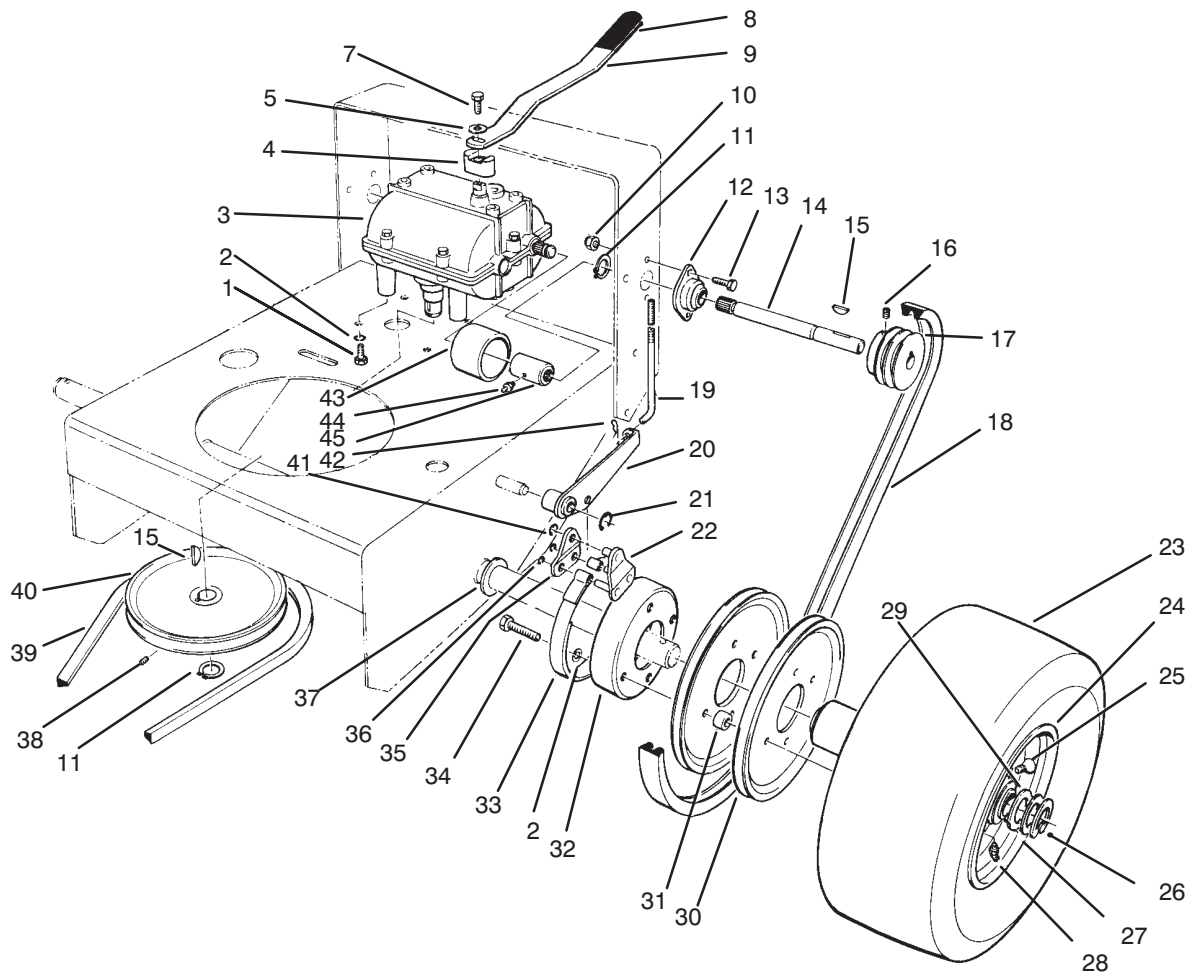
Ref. No.	Part No.	Description	No. Used
13	57-6390	Nut	2
14	3255-8	Washer - External Tooth	1
15	57-6370	Screw - Hex. Hd.	1
16	3256-23	Washer - Flat	3
17	3253-4	Washer - Lock	3
18	57-6380	Screw - Hex. Hd.	3
19	57-6360	Screw - Hex. Hd.	1
21	112843	Washer - PTO	1
22	2412-108	Clamp - Hose	1



T-0080

CLUTCH ASSEMBLY NO. 54-3200

Ref. No.	Part No.	Description	No. Used	Ref. No.	Part No.	Description	No. Used
1	54-0230	Field Assembly (Incl. Ref. # 2 & 3)	1	6	44-8330	Spacer - Pulley Bearing	1
2	251-292	Bearing - Field	1	7	44-8340	Collar - Bearing	1
3	44-8310	Ring - Retaining	2	8	251-291	Bearing - Pulley	1
4	44-8360	Field Coil, Rotor & Bearing Assembly (Incl. Ref. # 1)	1	9	3296-5	Nut - Lock	3
5	55-7410	Armature & Pulley Assembly (Incl. Ref. # 3, 6, 7, & 8)	1	10	44-8320	Spring	3



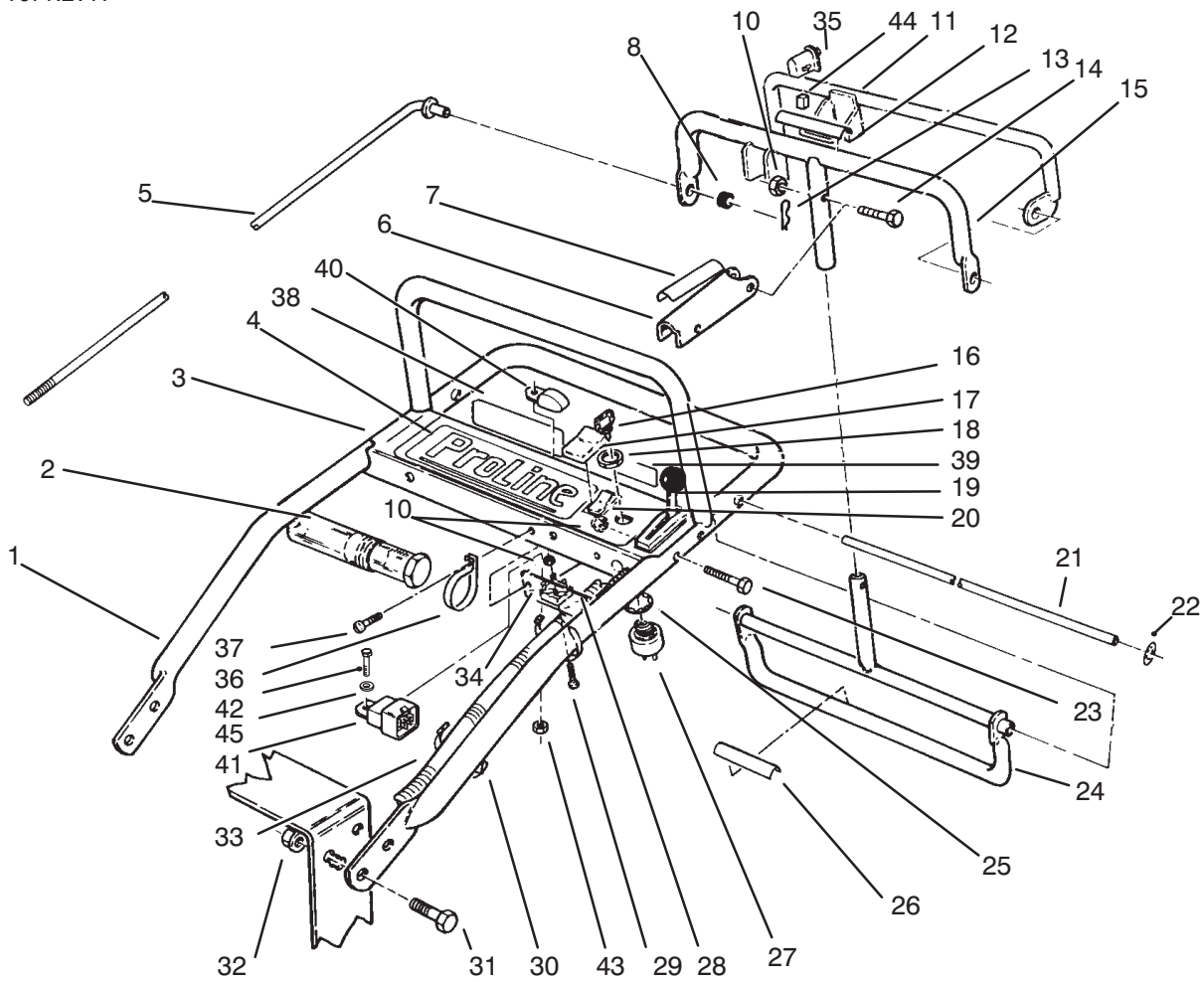
C-0502

AXLE ASSEMBLY

Ref. No.	Part No.	Description	No. Used
1	322-2	Screw - Hex. Hd.	4
2	3253-4	Washer - Lock	12
3	74-0610	Transmission	1
4	72-2190	Mount - Shift Lever	1
5	7-5461	Spacer	1
7	329-10	Screw - Hex. Hd.	1
8	47-1970	Grip - Engagement	1
9	74-0320	Lever - Shift	1
10	3296-42	Nut - Lock	4
11	32120-64	Ring - Retaining	3
12	51-4270	Bearing - Shaft Extension	2
13	321-4	Screw - Hex. Hd.	4
14	51-4240	Shaft - Extension R.H.	1
*	51-4250	Shaft - Extension L.H.	1
15	3257-5	Key - Woodruff	3
16	3245-3	Screw - Set Socket Hd.	2
17	74-0480	Pulley - Drive	2
18	51-4290	Belt - Drive	2
19	51-4580	Rod - Brake	2
20	51-4610	Brake Arm L.H.	1
*	51-4600	Brake Arm R.H.	1
21	32151-40	Ring - Retaining	2
22	51-4650	Link - Brake	2

Ref. No.	Part No.	Description	No. Used
23	231-117	Tire	2
24	242-80	Rim	2
25	232-27	Valve Stem	2
26	32151-91	Ring - Retaining	2
27	92-1746	Bearing	4
28	302-11	Grease Fitting	2
29	10-8110	Washer - Flat	A/R
30	51-4160	Pulley - Wheel	4
31	51-4170	Spacer - Pulley	8
32	51-4180	Drum - Brake	2
33	51-4700	Brake Band Assembly	2
34	322-7	Screw - Hex. Hd.	8
35	51-4660	Plate - Brake - Link	2
36	32151-72	Ring - Retaining	4
37	51-4230	Washer - Wheel	2
38	3241-5	Screw - Set	1
39	26-9671	Belt - Traction	1
40	51-4190	Pulley - Driven	1
41	32151-56	Ring - Retaining	2
42	3290-307	Pin - Cotter	2
43	51-4220	Guard - Coupler	2
44	302-5	Fitting - Grease	2
45	51-4260	Coupler	2

*Not Illustrated

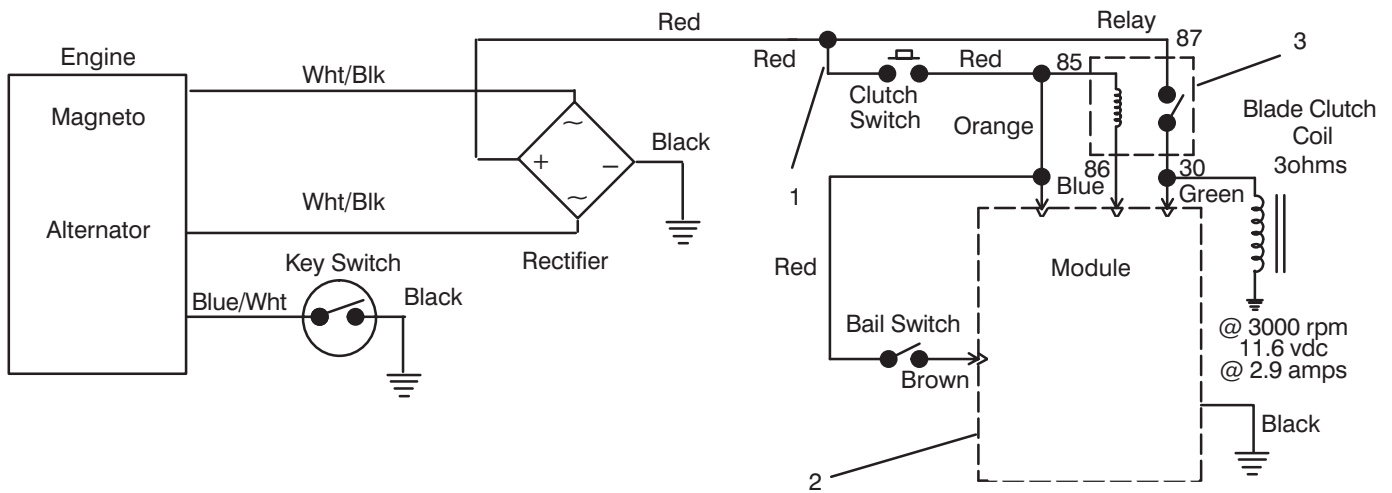


HANDLE ASSEMBLY

C-0506

Ref. No.	Part No.	Description	No. Used
1	67-6440	Handle - Upper	1
2	74-0720	Tube - Manual	1
3	82-2180	Panel - Control	1
4	82-7730	Decal - Proline	1
5	82-7631	Rod - Control	2
6	51-4850	Lever - Parking Brake	1
7	52-2010	Decal - Parking Brake	1
8	237-141	Grommet - Rubber	2
10	3296-2	Nut - Lock	6
11	82-7680	Bail Assembly	1
12	82-2290	Decal - Control Bar	1
13	3290-307	Pin - Cotter	2
14	32105-1	Screw - Hex. Hd. Machine	1
15	82-7690	Bar - Control	1
16	63-8360	Key	2
17	82-3820	Boot - Switch	1
18	218-461	Nut	1
19	74-0740	Control - Throttle	1
20	82-2300	Switch - Clutch	1
21	74-0470	Rod - Pivot	1
22	32151-80	Ring - Push On	2
23	32105-14	Screw - Hex. Hd. Machine	4
24	74-0380	Control - Pivot	1

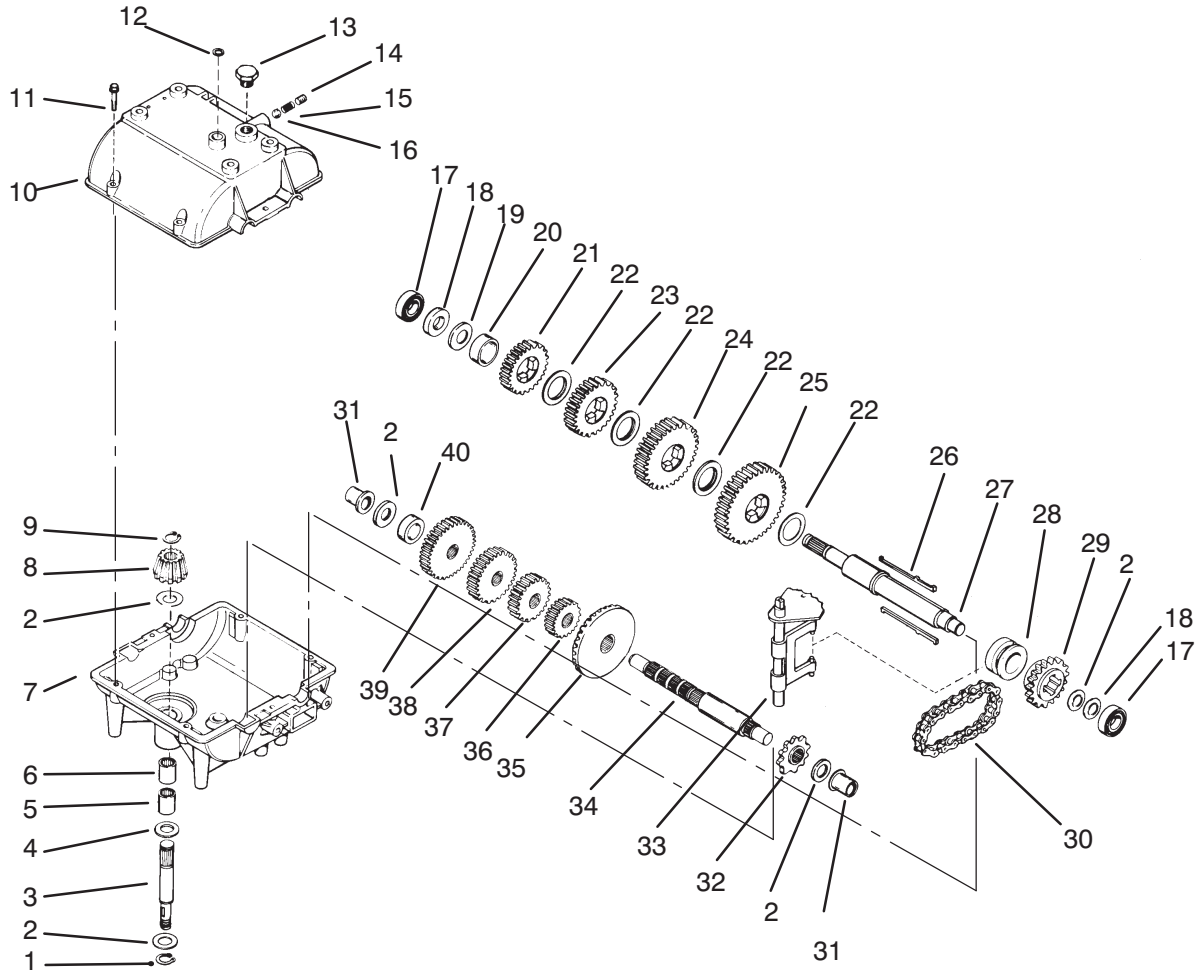
Ref. No.	Part No.	Description	No. Used
25	3254-5	Washer - Lock	1
26	82-2280	Decal - Reverse Handle	1
27	29-5560	Switch - Off/On (Incl. Ref. #16, 18, & 25)	1
28	57-5811	Panel - Bottom	1
29	32105-13	Screw - Machine	1
30	3290-378	Cable Tie	2
31	3234-11	Screw - Hex. Hd.	4
32	32128-21	Nut - Hex. Flange	4
33		Wire Harness (Ref.)	1
34	37-7600	Bridge - Rectifier	1
35	82-2190	Switch - Bail	1
36	2412-120	R-Clamp	2
37	32144-19	Screw - Self Tapping	4
38	65-3090	Decal - Instruction	1
39	71-1280	Decal - Danger	1
40	86-7910	Module - Interlock	1
41	63-7590	Relay	1
42	321-2	Screw - Hex. Hd.	2
43	3296-42	Nut - Hex	2
44	218-595	Connector - Body	1
45	3255-7	Washer - Lock	1



ELECTRIC SCHEMATIC

Ref. No.	Part No.	Description	No. Used
1	82-2240	Wire Harness	1
2	86-7910	Module - Interlock	1

Ref. No.	Part No.	Description	No. Used
3	63-7590	Relay	1

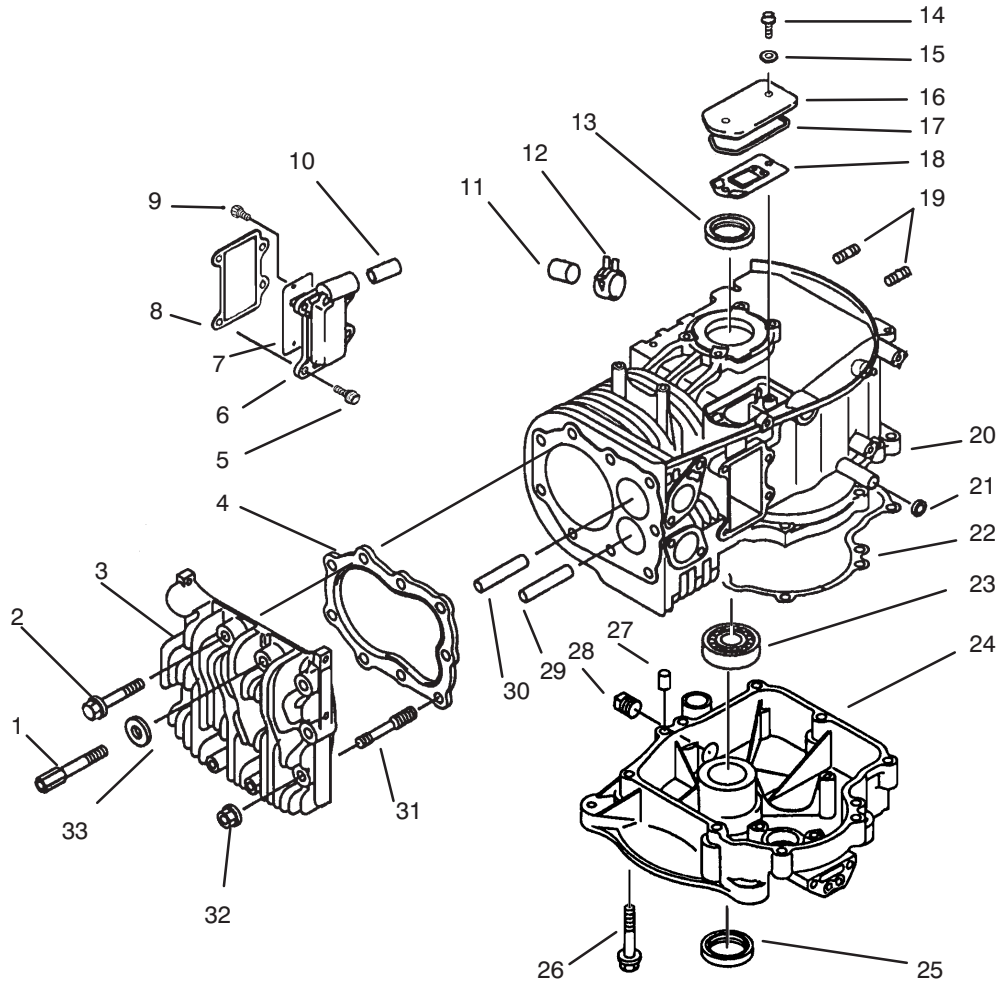


C-1776

PEERLESS TRANSMISSION MODEL NO. 700-039

Ref. No.	Part No.	Description	No. Used
1	792035	Ring – Retaining	1
2	780072	Washer – Thrust	5
3	776135	Shaft – Input	1
4	792001	"O"Ring	2
5	780142	Bearing – Needle	1
6	780086	Bearing – Needle	1
7	770090A	Case – Transmission	1
8	778153	Bevel Pinion – Input	1
9	788040	Ring – Retaining	1
10	772099A	Cover – Transmission	1
11	792073	Screw – Self Tapping	6
12	788069	Seal – Square Cut	1
13	792074	Plug – Threaded	1
14	792078	Screw – Set	1
15	792079	Spring	1
16	792077	Ball – Steel	1
17	780092	Bearing – Ball	2
18	780065	Washer – Thrust	2
19	780139	Washer – Thrust	1
20	786072	Spacer	1

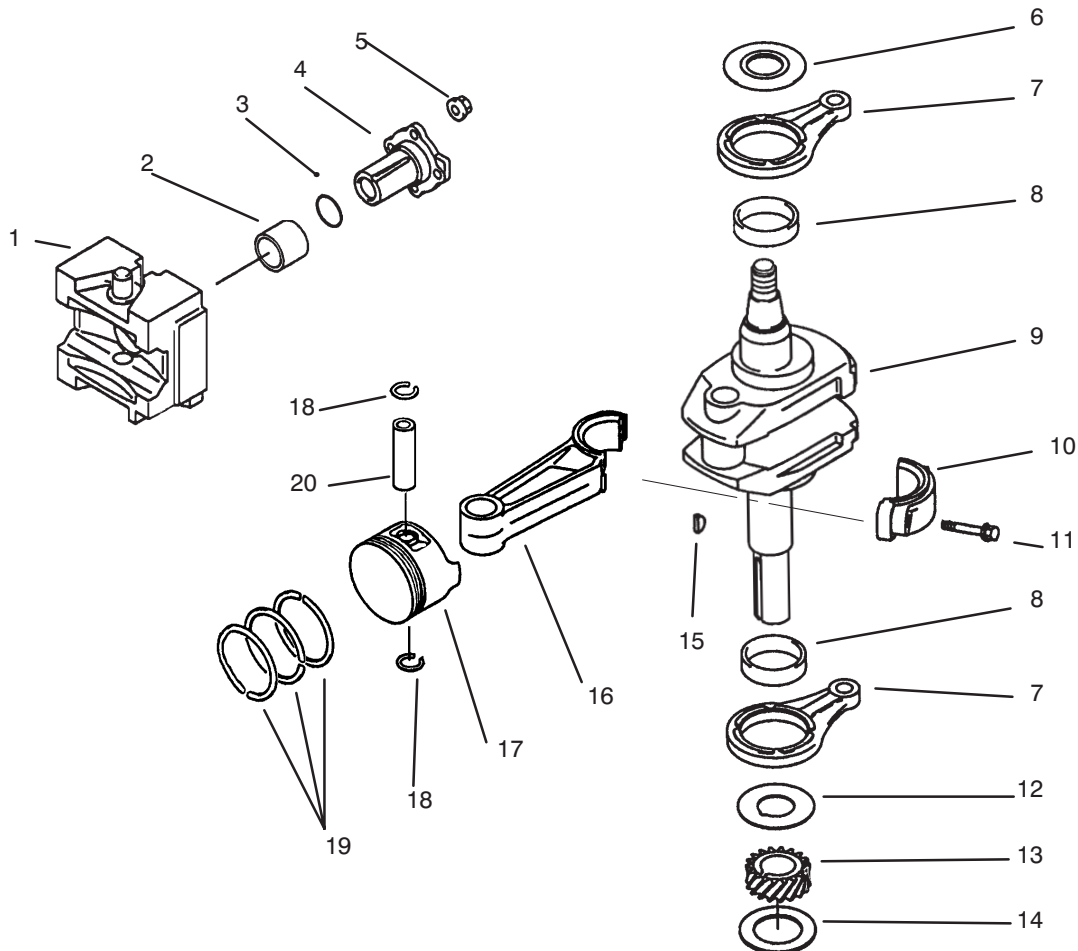
Ref. No.	Part No.	Description	No. Used
21	778123A	Gear – Spur (25 Teeth)	1
22	780108	Washer – Thrust	4
23	778250	Gear – Spur (27 Teeth)	1
24	778124A	Gear – Spur (30 Teeth)	1
25	778125	Gear – Spur (35 Teeth)	1
26	792089A	Key	4
27	776289A	Shaft – Output & Brake	1
28	784266	Collar – Shift	1
29	786083	Sprocket (18 Teeth)	1
30	786081	Chain – Roller (No. 41)	1
31	780105A	Bushing – Flanged	2
32	786082	Sprocket (9 Teeth)	1
33	784267	Rod & Fork Ass'y – Shift	1
34	776134	Shaft – Counter	1
35	778154	Gear – Bevel (42Teeth)	1
36	778136	Gear – Spur (15 Teeth)	1
37	778126A	Gear – Spur (20 Teeth)	1
38	778249	Gear – Spur (23 Teeth)	1
39	778127A	Gear – Spur (25 Teeth)	1
40	786071	Spacer	1



CRANKCASE

Ref. No.	Part No.	Description	No. Used
1	92002-2258	Bolt	2
2	130G1055	Bolt - Flanged	4
3	11001-2151	Head - Cylinder	1
4	11004-2091	Gasket - Head	1
5	130G0616	Bolt - Flanged	4
6	49108-2011	Cover - Valve Chamber	1
7	14025-2143	Cover	1
8	11060-2059	Gasket	1
9	92009-2307	Screw	2
10	92059-2142	Tube - 10 x 14 x 29-1/2	1
11	92066-2096	Plug	1
12	92170-2088	Clamp	1
13	92049-2096	Seal - Oil	1
14	92002-2087	Bolt	2
15	11060-2323	Gasket	2
16	14025-2040	Cover - Breather	1
17	11009-2339	Gasket - Cover	1

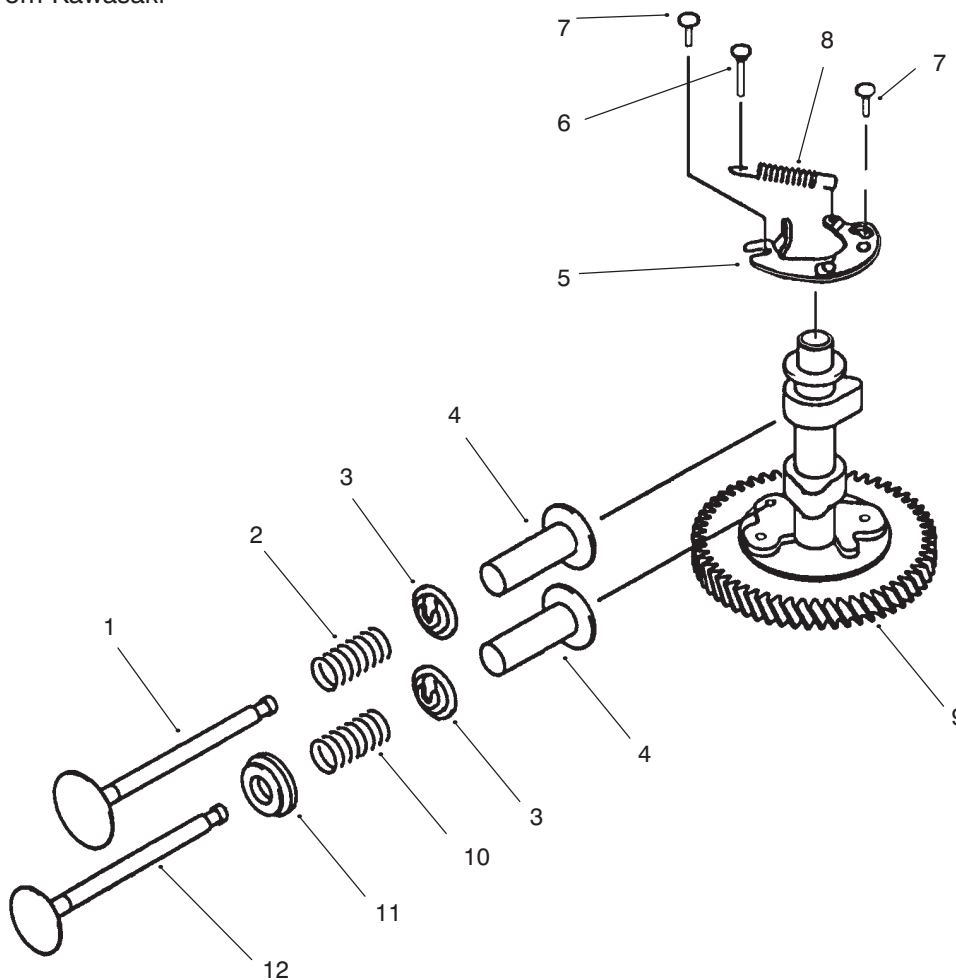
Ref. No.	Part No.	Description	No. Used
18	14069-2062	Breather	1
19	92004-2083	Stud - 6 x 14	4
20	49120-6108	Crankcase - Complete (Incl. Ref. #29, 30)	1
21	92049-2097	Seal - Oil	1
22	11060-2015	Gasket - Crankcase	1
23	601A6207	Bearing - Ball	1
24	49015-6176	Cover - Crankcase	1
25	92049-2227	Seal - Oil	1
26	130G0845	Bolt - Flanged	8
27	92043-1263	Pin	2
28	92066-2097	Plug	1
29	49002-2071	Guide - Valve, Exhaust	1
30	49002-2070	Guide - Valve, Intake	1
31	92004-2082	Stud	3
32	92015-2115	Nut - 10 MM	3
33	410B1000	W-Plain-S	2



PISTON / CRANKSHAFT

Ref. No.	Part No.	Description	No. Used
1	13042-6006	Weight (Incl. Ref. # 2)	1
2	92141-2097	Bearing - Plane	1
3	92055-2072	Ring-O	1
4	13107-2253	Shaft	1
5	92015-1193	Nut	4
6	92026-2164	Spacer	1
7	46102-6007	Rod (Incl. Ref. #8)	2
8	92141-2108	Bearing - Plane	2
9	49119-2177	Crankshaft - Assembly	1
10		Cap - Rod	1
11	92150-2193	Bolt	2
12	92026-2156	Spacer	1
13	59056-2105	Gear - Helical	1
14	92025-2145	Shim, T=1.18	A/R
	92025-2146	Shim, T=1.25	A/R
	92025-2147	Shim, T=1.32	A/R
	92025-2148	Shim, T=1.39	A/R
	92025-2149	Shim, T=1.46	A/R
	92025-2150	Shim, T=1.53	A/R

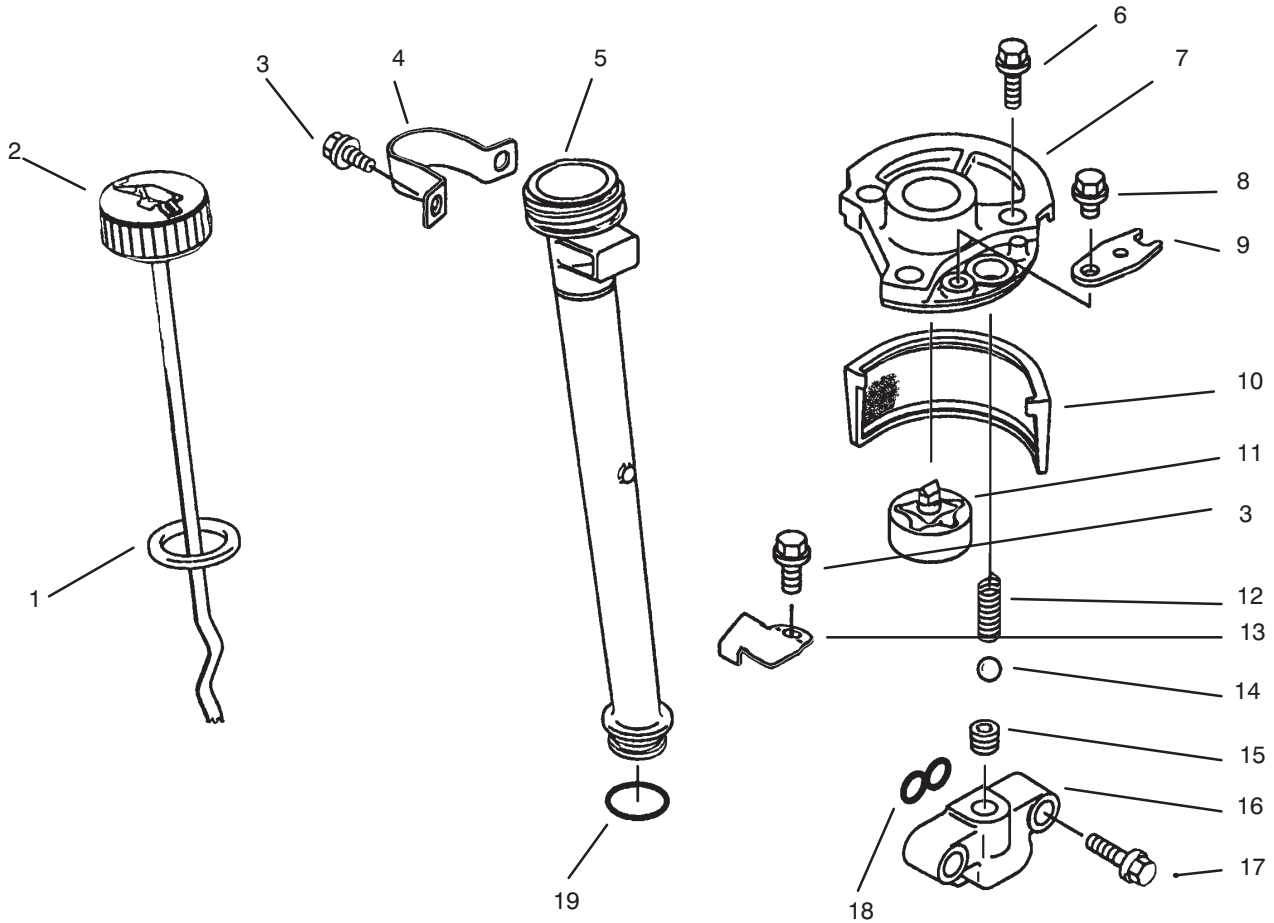
Ref. No.	Part No.	Description	No. Used
	92025-2151	Shim, T=1.60	A/R
	92025-2152	Shim, T=1.67	A/R
	92025-2153	Shim, T=1.74	A/R
*	92180-2015	Shim, T=1.11	A/R
*	92180-2016	Shim, T=1.81	A/R
15	92038-2094	Key	1
16	13251-6005	Rod - Assy., Connecting (Incl. Ref. #10 & 11)	1
	13251-6007	Rod - Assy. Connecting U/S=0.50 (Incl. Ref. #10 7 11)	A/R
17	13001-2084	Piston - Engine	1
*	13029-2019	Piston - Engine L 0.25	A/R
*	13029-2020	Piston - Engine L 0.50	A/R
18	92033-2066	Ring - Snap	
19	13008-6001	Ring - Set, Piston	1
*	13008-6002	Ring - Set, Piston L 0.25	A/R
*	13008-6003	Ring - Set, Piston L 0.50	A/R
20	13002-2066	Pin - Piston	1



VALVE / CAMSHAFT

Ref. No.	Part No.	Description	No. Used
1	12004-2076	Valve - Intake	1
2	49078-2059	Spring - Engine Valve	1
3	39108-2054	Retainer - Spring	2
4	12032-2058	Tappet	2
5	21118-2068	Decompressor	1
6	92043-2167	Pin	1
7	92043-2113	Pin	2

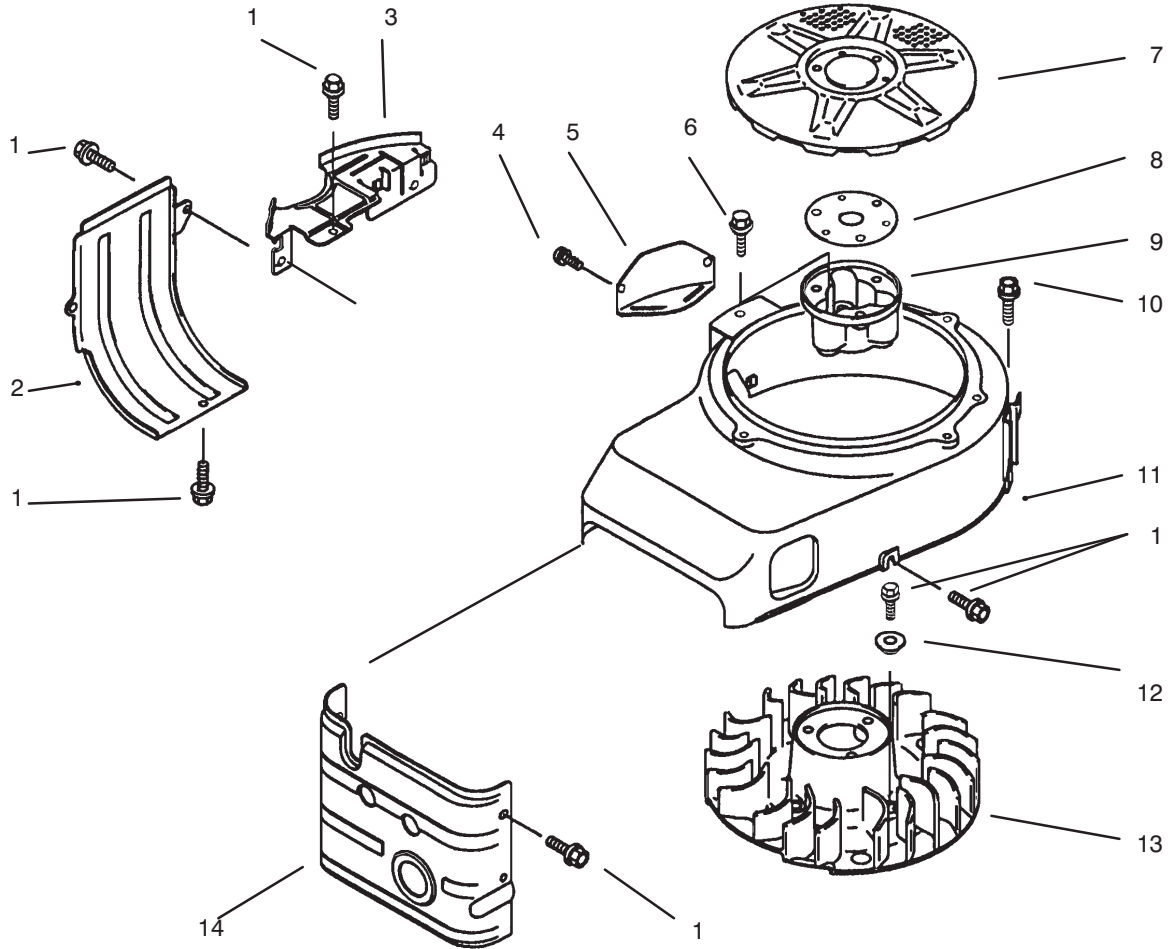
Ref. No.	Part No.	Description	No. Used
8	92144-2171	Spring	1
9	49118-2134	Camshaft - Complete (Incl. Ref. #5-8)	1
10	49078-2058	Spring - Engine Valve	1
11	12039-2052	Rotator	1
12	12005-2066	Valve - Exhaust	1



LUBRICATION EQUIPMENT

Ref. No.	Part No.	Description	No. Used
1	11009-2346	Gasket - Oil Gauge	1
2	52005-2058	Gauge - Oil	1
3	130B0508	Bolt - Flanged	3
4	92170-2014-9H	Clamp	1
5	59231-2059	Filler	1
6	130G0825	Bolt - Flanged	3
7	16142-6001	Cover - Pump	1
8	130B0610	Bolt - Flanged	1
9	13270-2054	Plate	1
10	49065-2056	Filter - Oil	1

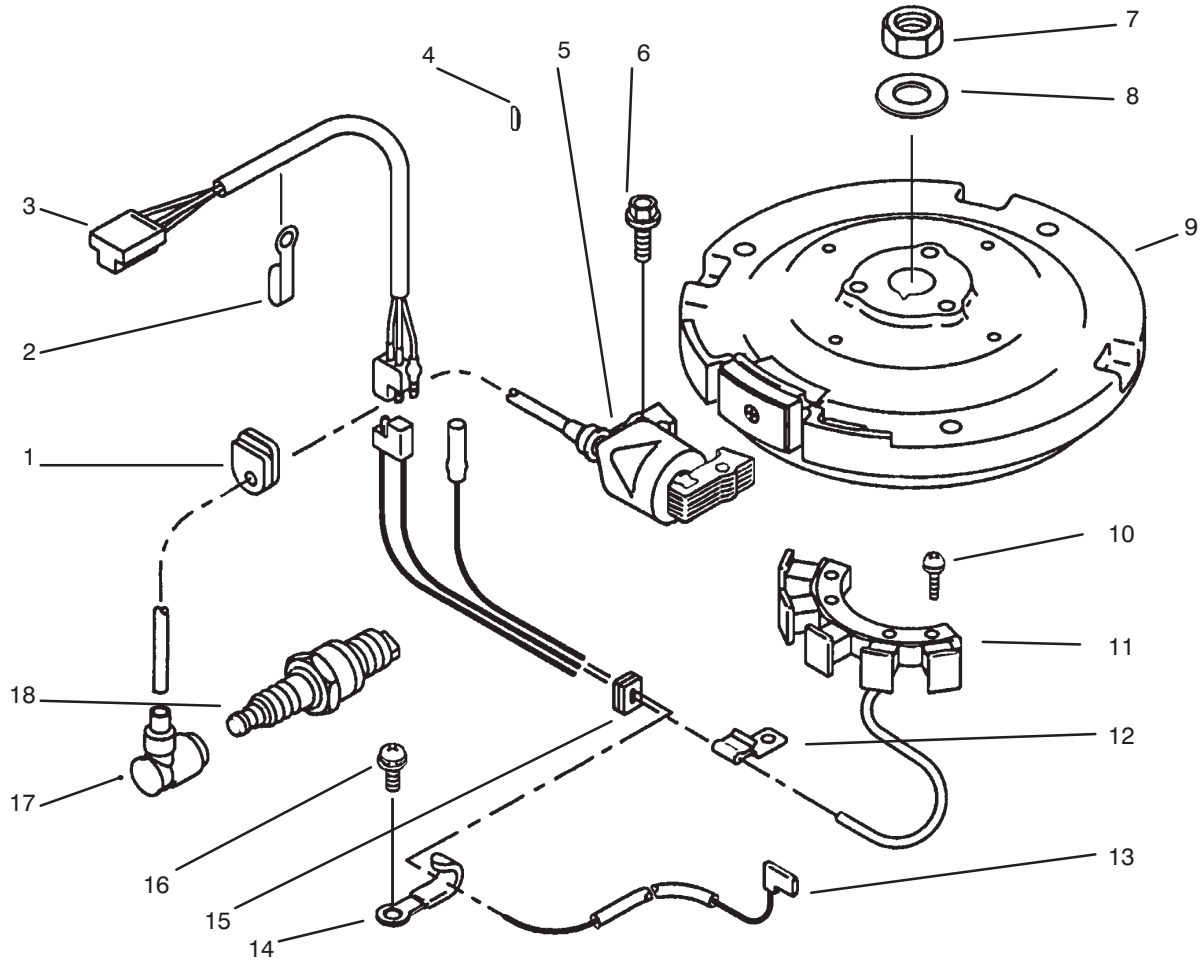
Ref. No.	Part No.	Description	No. Used
11	16082-2057	Pump - Assembly, Oil	1
12	92081-2216	Spring	1
13	13169-2359	Plate	1
14	600A1000	Ball - Steel	1
15	92066-2211	Plug	1
16	14025-2145	Cover	1
17	130B0830	Bolt - Flanged	2
18	92055-2063	Ring-O	1
19	670D2016	Ring-O	1



COOLING EQUIPMENT

Ref. No.	Part No.	Description	No. Used
1	130G0610	Bolt – Flanged	9
2	49089-2199-9H	Shroud – Engine	1
3	59066-2295-9H	Housing – Fan	1
4	234B0408	Screw – Pan-WSP	2
5	14024-2038-9H	Cover	1
6	130B0820	Bolt – Flanged	3
7	14037-2104-9H	Screen	1

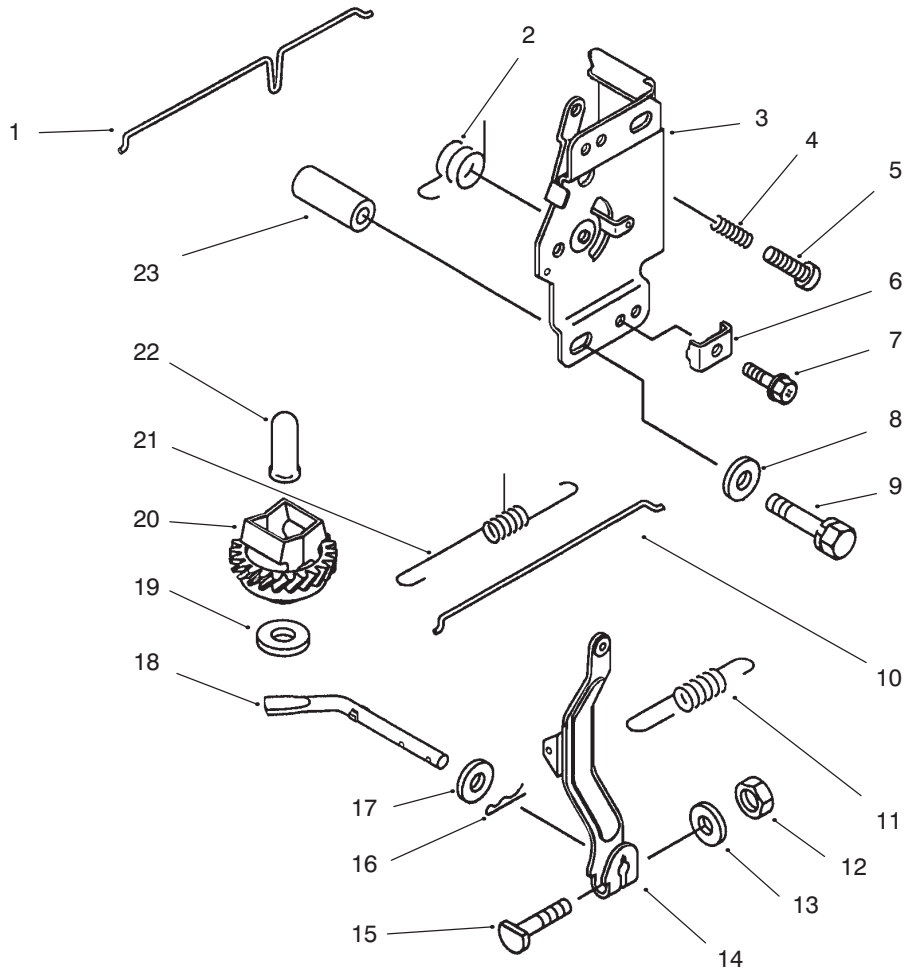
Ref. No.	Part No.	Description	No. Used
8	92025-2003	Shim, T=1.20	AR
9	11044-2084	Bracket	1
10	130G0614	Bolt – Flanged	6
11	59066-2677-9H	Housing – Fan	1
12	92143-2179	Collar	4
13	59041-2081	Fan	1
14	49089-2181-9H	Shroud – Engine	1



ELECTRIC EQUIPMENT

Ref. No.	Part No.	Description	No. Used
1	92071-2100	Grommet	1
2	92037-2063	Clamp	1
3	26001-2113	Harness	1
4	92038-2094	Key	1
5	21121-2086	Coil - Ignition	1
6	130B0520	Bolt - Flanged	2
7	314G1800	Nut - Hex, Fine	1
8	92022-2178	Washer	1
9	21194-2323	Flywheel	1

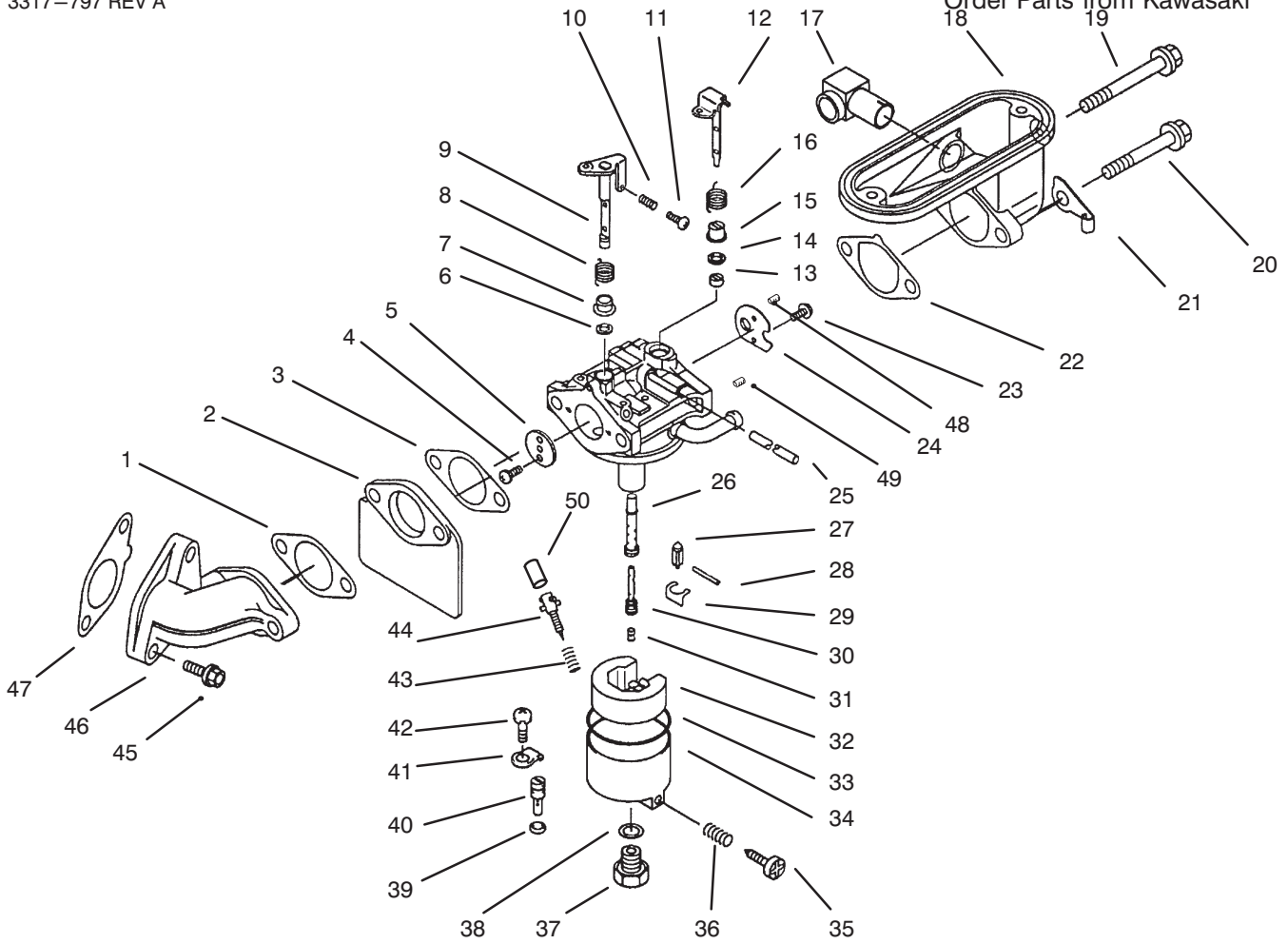
Ref. No.	Part No.	Description	No. Used
10	224B0620	Screw - Pan	2
11	59031-2106	Coil - Charging	1
12	92037-2158	Clamp	1
13	26011-2329	Wire - Lead	1
14	92170-2029	Clamp	1
15	92071-2099	Grommet	1
16	234B0408	Screw - Pan	1
17	21130-2060	Cap - Spark Plug	1
18	92070-2101	Plug - Spark, RCJ8	1



CONTROL EQUIPMENT

Ref. No.	Part No.	Description	No. Used
1	16169-2126	Link - Choke	1
2	92081-2316	Spring	1
3	49113-2067	Panel - Comp. Control (Incl. Ref. # 2, & 4-7)	1
4	92144-2266	Spring	1
5	214B0425	Screw - Pan	1
6	92037-2020	Clamp	1
7	92150-2182	Bolt - 5 x 8	1
8	92200-2070	Washer	2
9	180B0650	Bolt - Upset-Ws	2
10	16171-2083	Link	1
11	39129-2010	Spring - Governor	1

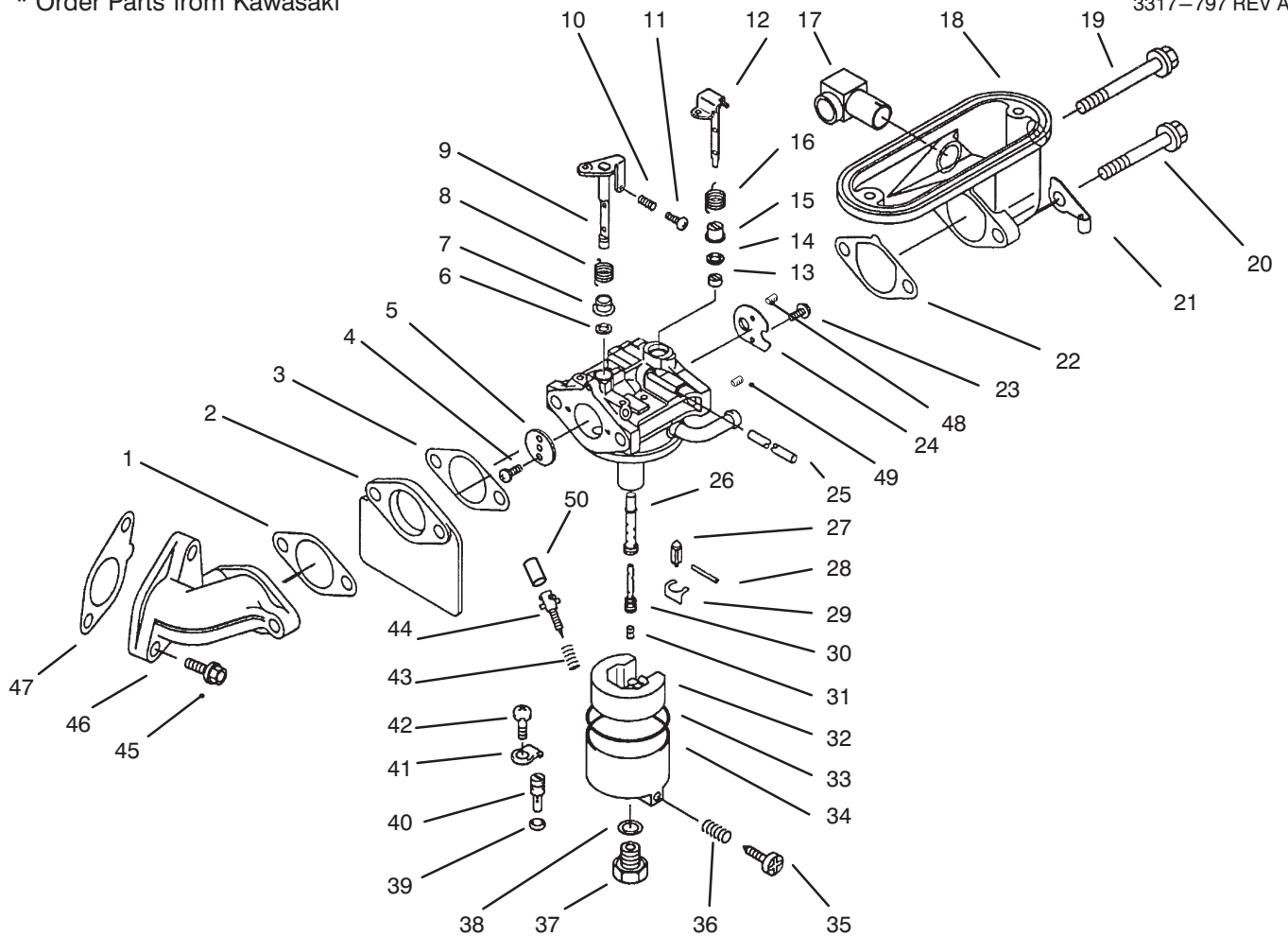
Ref. No.	Part No.	Description	No. Used
12	311B0600	Nut - Hex	1
13	411B0600	Washer - Plain	1
14	21187-2052	Arm - Assembly	1
15	92002-2269	Bolt	1
16	554A0600	Pin - Snap	1
17	92200-2029	Washer	1
18	39003-2072	Arm - Pivot	1
19	92200-2036	Washer	1
20	49110-2067	Governor - Assembly	1
21	92081-2213	Spring	1
22	42036-2060	Sleeve	1
23	92027-2071	Collar	2



CARBURETOR

Ref. No.	Part No.	Description	No. Used
1	11060-2338	Gasket - Intake Pipe	1
2	16073-2091	Insulator	1
3	11060-2339	Gasket - Carburetor	2
4	92009-2080	Screw	2
5	16025-2141	Valve - Throttle, #110	1
6	92093-2082	Seal	1
7	92027-2025	Collar	1
8	92081-2077	Spring	1
9	16041-2009	Shaft - Throttle	1
10	92081-2046	Spring	1
11	92009-2079	Screw	1
12	16041-2010	Shaft - Choke	1

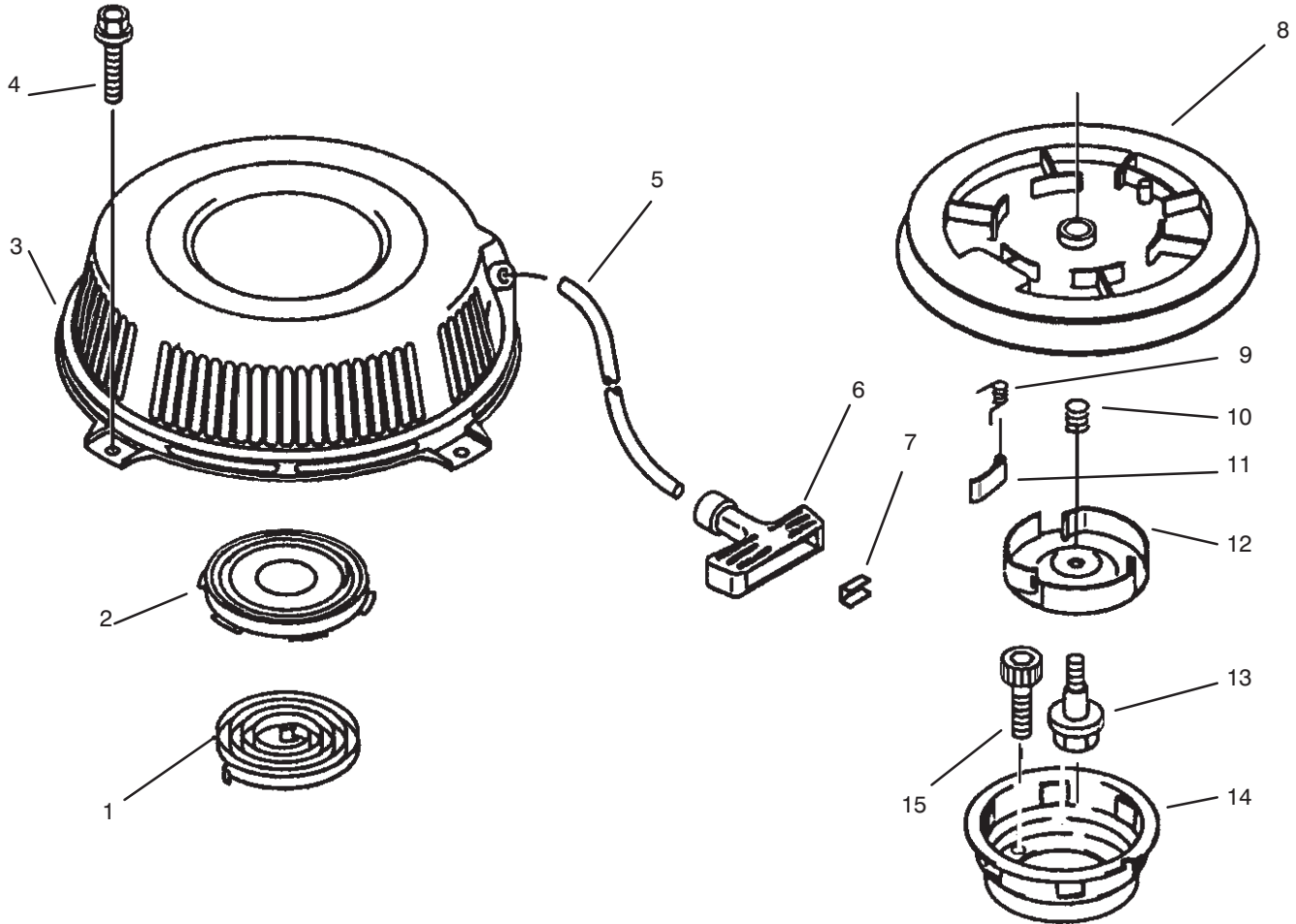
Ref. No.	Part No.	Description	No. Used
13	92027-2003	Collar	1
14	92093-2069	Seal	1
15	92143-2142	Collar	1
16	92144-2160	Spring	1
17	59071-2062	Joint	1
18	16060-2108	Pipe - Intake	1
19	92002-2254	Bolt - 8 x 110	1
20	92002-2253	Bolt - 8 x 92	1
21	92170-2019	Clamp	1
22	11009-2025	Gasket	1
23	92009-2081	Screw	2
24	16126-2206	Valve - Choke	1



CARBURETOR (Continued)

Ref. No.	Part No.	Description	No. Used
25	92059-2266	Tube - 3 x 5 x 110	1
26	49121-2207	Nozzle - Main	1
27	16030-2073	Valve - Float	1
28	92043-2006	Pin	1
29	92033-2067	Ring - Snap	1
30	49123-2078	Holder - Main Jet	1
31	92063-2294	Jet - Main	1
32	16031-2066	Float	1
33	11009-2024	Gasket	1
34	16020-2109	Chamber - Float (Incl. Ref. #35, 36)	1
35	92009-2015	Screw	1
36	92081-2009	Spring	1
37	92150-2146	Bolt	1
38	11009A-2025	Gasket	1

Ref. No.	Part No.	Description	No. Used
39	16038-024	Gasket	1
40	92064-2108	Jet - Pilot	1
41	13183-2252	Plate	1
42	92009-2244	Screw	1
43	92081-2008	Spring	1
44	16014-2076	Screw - Pilot Air	1
45	130G0825	Bolt - Flanged	2
46	16060-2109	Pipe - Intake	1
47	11060-2337	Gasket - Intake Pipe	1
48	16035-2063	Jet-Air #0.9	1
49	16035-2051	Jet-Air #1.4	1
50	39076-2053	Limiter	1
*	15003-2467	Carburetor - Assembly (Incl. Ref. # 1-16 & 22-44)	1

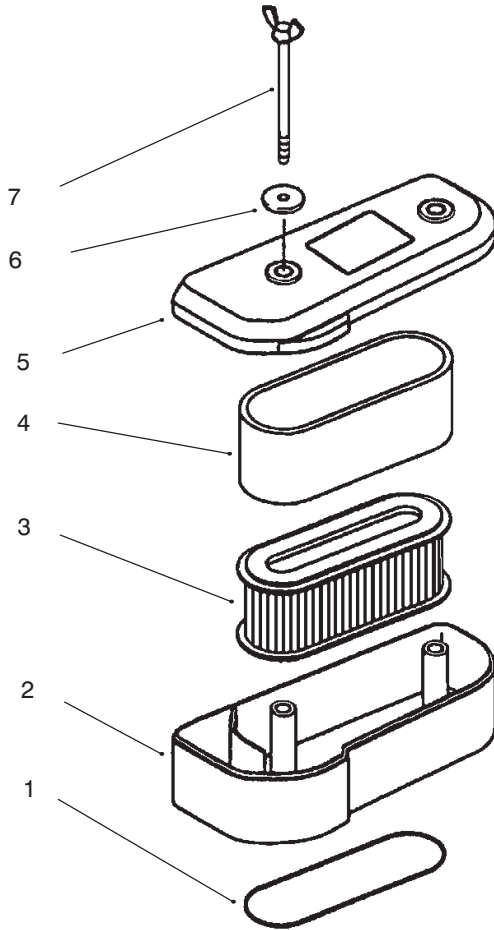


STARTER

Ref. No.	Part No.	Description	No. Used
1	92081-2267	Spring - Recoil	1
2	32099-2060	Case - Spring	1
3	32099-2239-YK	Case - Recoil Starter	1
4	130B0610	Bolt - Flanged	4
5	59106-2060	Rope - 6 x 1380	1
6	46075-2059	Grip - Recoil Starter	1
7	92022-2248	Washer	1
8	59101-2054	Reel - Recoil Starter	1
9	92081-2021	Spring	3

Ref. No.	Part No.	Description	No. Used
10	92081-2268	Spring - Return	1
11	13165-2073	Pawl - Recoil Starter	3
12	14020-2054	Retainer - Recoil Starter	1
13	92001-2027	Bolt	1
14	49080-2144	Pulley - Starting	1
15	120P0620	Bolt - Socket	3
*	49088-2412-YK	Starter - Recoil (Incl. Ref. #1-5 & 8-14)	1

*Not Illustrated

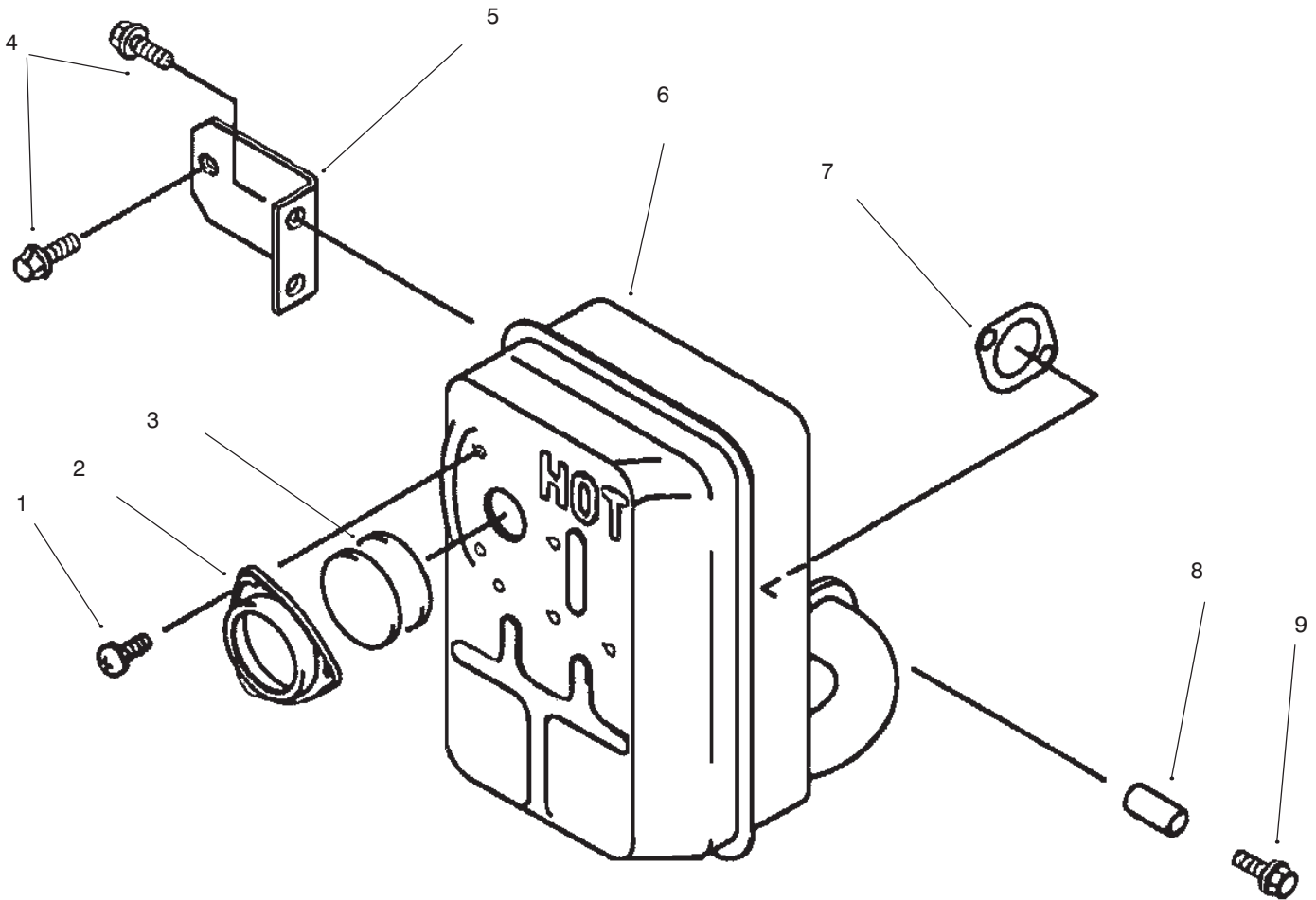


AIR-FILTER

Ref. No.	Part No.	Description	No. Used	Ref. No.	Part No.	Description	No. Used
1	11009-2443	Gasket - Air Filter	1	6	92022-2220	Washer	2
2	11011-2174	Case - Air Filter	1	7	92002-2230	Bolt	2
3	11013-2021	Element - Air Filter	1	*	11010-2291	Filter Assembly (Incl. Ref. # 2-6)	1
4	11013-2020	Element - Air Filter	1				
5	11012-2192	Cap - Air Filter	1				

*Not Illustrated

3317-797 REV A



MUFFLER

Ref. No.	Part No.	Description	No. Used
1	92009-2166	Screw - 5 x 8	2
2	11012-2165-9Y	Cap - Spark Arrester	1
3	18077-2052	Arrester - Spark	2
4	130G0812	Bolt - Flanged	4
5	11044-2069-9Y	Bracket	1

Ref. No.	Part No.	Description	No. Used
6	49069-2190-9Y	Muffler Assembly (Incl. Ref. #1-3)	1
7	11009-2527	Gasket - Muffler	1
8	92027-2081	Collar	2
9	130G0845	Bolt - Flanged	2

*Not Illustrated

TORO PART NUMBER INDEX

3317-797 REV A

Part No.	Description	Pg. Ref. No. No. Qty.	Part No.	Description	Pg. Ref. No. No. Qty.
7-5461	Spacer	5 5 1	71-1280	Decal - Danger	6 39 1
10-8110	Washer - Flat	5 29A/R	71-3040	Replacement Axle Kit	2 * 1
112843	Washer - PTO	3 21 1	72-2190	Mount - Shift Lever	5 4 1
16-7509	Lever - Idler	1 25 1	74-0040	Spacer - Pivot Idler	1 19 4
26-9670	Belt - Traction	5 39 1	74-0050	Sheave - Lower Half	3 5 1
27-6230	Bolt - Wheel	1 23 1	74-0060	Sheave - Upper Half	3 6 1
29-5560	Switch - Off/On	6 27 1	74-0220	Idler - Bracket L.H.	1 8 1
37-7600	Bridge - Rectifier	6 34 1	74-0230	Idler - Bracket R.H.	1 * 2
44-8310	Ring - Retaining	4 3 2	74-0320	Lever - Shift	5 9 1
44-8320	Spring	4 10 3	74-0360	Frame - Rear	2 34 1
44-8330	Spacer - Pulley Bearing	4 6 1	74-0380	Control - Pivot	6 24 1
44-8340	Collar - Bearing	4 7 1	74-0470	Rod - Pivot	6 21 1
44-8360	Field Coil, Rotor & Bearing	4 4 1	74-0480	Pulley - Drive	5 17 2
47-1970	Grip - Engagement	5 8 1	74-0490	Decal - Fuel Shut Off	2 33 1
47-2982	Hose - Fuel	1 3 1	74-0510	Valve - Fuel	2 35 1
47-2982	Hose - Gas	3 12 1	74-0521	Fitting - Rod	1 10 2
51-4160	Pulley - Wheel	5 30 4	74-0610	Transmission	5 3 1
51-4170	Spacer - Pulley	5 31 8	74-0720	Tube - Manual	6 2 1
51-4180	Drum - Brake	5 32 2	74-0740	Control - Throttle	6 19 1
51-4190	Pulley - Driven	5 40 1	82-2180	Panel - Control	6 3 1
51-4220	Guard - Coupler	5 43 2	82-2190	Switch - Bail	6 35 1
51-4230	Washer - Wheel	5 37 2	82-2240	Wire Harness	7 1 1
51-4240	Shaft - Extension R.H.	5 14 1	82-2280	Decal - Reverse Handle	6 26 1
51-4250	Shaft - Extension L.H.	5 * 1	82-2290	Decal - Control Bar	6 12 1
51-4260	Coupler	5 45 2	82-2300	Switch - Clutch	6 20 1
51-4270	Bearing - Shaft Extension	5 12 2	82-3820	Boot - Switch	6 17 1
51-4290	Belt - Drive	5 18 2	82-7631	Rod - Control	6 5 2
51-4370	Spring - Torsion R.H.	1 * 1	82-7680	Bail Assembly	6 11 1
51-4380	Spring - Torsion L.H.	1 17 1	82-7690	Bar - Control	6 15 1
51-4450	Screw - Leveler	1 18 2	82-7730	Decal - Proline	6 4 1
51-4480	Idler - Wheel	1 15 2	82-7750	Decal - Ground Speed	2 32 1
51-4490	Spacer - Idler Wheel	1 16 2	82-8440	Tank - Fuel	2 37 1
51-4540	Retainer - Clutch	3 8 1	86-7910	Module - Interlock	7 2 1
51-4580	Rod - Brake	5 19 2	86-7910	Module - Interlock	6 40 1
51-4600	Brake Arm R.H.	5 * 1	92-1746	Bearing	5 27 4
51-4610	Brake Arm L.H.	5 20 1	92-5436	Key	3 7 1
51-4650	Link - Brake	5 22 2	93-1156	Frame	1 28 1
51-4660	Plate - Brake - Link	5 35 2	218-461	Nut	6 18 1
51-4700	Brake Band Assembly	5 33 2	218-595	Connector - Body	6 44 1
51-4850	Lever - Parking Brake	6 6 1	231-117	Tire	5 23 2
52-2010	Decal - Parking Brake	6 7 1	232-27	Valve Stem	5 25 2
52-2890	Bushing	2 38 2	237-7	ORing	2 36 1
54-0230	Field Assembly	4 1 1	237-124	Grommet	1 21 1
54-3200	Clutch Brake Assembly	3 4 1	237-141	Grommet - Rubber	6 8 2
55-3570	Cap - Fuel Tank	1 1 1	242-80	Rim	5 24 2
55-7410	Armature & Pulley Assembly	4 5 1	2412-98	Clamp - Fuel Line	3 11 2
56-6360	Fuel - Filter	3 10 1	2412-98	Clamp - Fuel line	1 2 1
57-5811	Panel - Bottom	6 28 1	2412-108	Clamp - Hose	3 22 1
57-6360	Screw - Hex. Hd.	3 19 1	2412-120	R-Clamp	6 36 2
57-6370	Screw - Hex. Hd.	3 15 1	251-291	Bearing - Pulley	4 8 1
57-6380	Screw - Hex. Hd.	3 18 3	251-292	Bearing - Field	4 2 1
57-6390	Nut	3 13 2	256-155	Bushing	1 24 2
62-4540	Pulley - Idler	1 26 1	283-6	Pin - Clevis	1 9 4
63-7590	Relay	7 3 1	302-5	Fitting - Grease	5 44 2
63-7590	Relay	6 41 1	302-11	Grease Fitting	5 28 2
63-8360	Key	6 16 2	321-2	Screw - Hex. Hd.	6 42 2
65-3090	Decal - Instruction	6 38 1	321-4	Screw - Hex. Hd.	5 13 4
66-7400	Plate - Control	2 31 1	322-2	Screw - Hex. Hd.	5 1 4
67-6370	Bracket - Support R.H.	1 * 1	322-4	Screw - Hex. Hd.	1 29 4
67-6380	Bracket - Support L.H.	1 11 1	322-7	Screw - Hex. Hd.	5 34 8
67-6440	Handle - Upper	6 1 1	323-6	Screw - Hex. Hd.	1 13 6
68-2190	Spring - Extension	1 22 1	323-9	Screw - Hex Hd.	1 27 1
68-9690	Fitting - Rod	1 6 2	323-16	Screw - Hex. Hd.	1 12 2

*Not Illustrated

TORO PART NUMBER INDEX (Cont.)

Part No.	Description	Pg. Ref. No. No. Qty.	Part No.	Description	Pg. Ref. No. No. Qty.
329-10	Screw - Hex. Hd.	5 7 1	3296-6	Nut - Lock	2 39 1
3234-11	Screw - Hex. Hd.	6 31 4	3296-23	Nut - Lock	1 14 2
3241-5	Screw - Set	5 38 1	3296-39	Nut - Lock	1 20 9
3245-3	Screw - Set Socket Hd.	5 16 2	3296-42	Nut - Hex	6 43 2
3253-4	Washer - Lock	3 17 3	3296-42	Nut - Lock	5 10 4
3253-4	Washer - Lock	1 30 4	32103-25	Nut - Wing	1 4 2
3253-4	Washer - Lock	5 2 12	32105-1	Screw - Hex. Hd. Machine	6 14 1
3254-5	Washer - Lock	6 25 1	32105-13	Screw - Machine	6 29 1
3255-8	Washer - External Tooth	3 14 1	32105-14	Screw - Hex. Hd. Machine	6 23 4
3256-23	Washer - Flat	1 5 10	32120-64	Ring - Retaining	5 11 3
3256-23	Washer - Flat	3 16 3	32128-21	Nut - Hex. Flange	6 32 4
3257-5	Key - Woodruff	5 15 3	32144-19	Screw - Self Tapping	6 37 4
3290-307	Pin - Cotter	1 7 4	32151-40	Ring - Retaining	5 21 2
3290-307	Pin - Cotter	6 13 2	32151-56	Ring - Retaining	5 41 2
3290-307	Pin - Cotter	5 42 2	32151-72	Ring - Retaining	5 36 4
3290-378	Cable Tie	6 30 2	32151-80	Ring - Push On	6 22 2
3296-2	Nut - Lock	6 10 6	32151-91	Ring - Retaining	5 26 2
3296-5	Nut - Lock	4 9 3			

TABLE OF CONTENTS

Description	Page	Description	Page
Frame Assembly	1	Valve / Camshaft	11
Engine & Clutch Assembly	3	Lubrication / Equipment	12
Clutch Assembly No. 54-3200	4	Cooling / Equipment	13
Axle Assembly	5	Electrical / Equipment	14
Handle Assembly	6	Control / Equipment	15
Electrical Schematic	7	Carburetor	16
Peerless Transmission Model No. 700-039	8	Starter	18
Engine Kawasaki Model FB460V Type KS08		Air Filter	19
Crankcase	9	Muffler	20
Piston / Crankshaft	10	Numerical Parts Index	21

Optional Equipment

Description	Model / Part No.	Description	Model / Part No.
36" Cutting Unit	Model No. 30136	37" Deck (Cloth Bag) Bag Kit	Model No. 30129
37" Recycler Deck	Model No. 30137	37" Deck (Steel Hopper) Bag Kit	Model No. 30130
44" Cutting Unit	Model No. 30144	44/52" Deck Bag Kit	Model No. 30128
48" Recycler Deck	Model No. 30148	2-5" HOC Kit	Part No. 84-5010
52" Cutting Unit	Model No. 30152	Front Weight Kit-36/37" Deck	Part No. 80-3350
62" Cutting Unit	Model No. 30162	Standard Sulky	Model No. 30122
36" Deck Bag Kit	Model No. 30125	Steerable Sulky	Model No. 30123

Compliance with Radio Interference Regulations Certified.
 Certifie Conforme au Reglement sur le Brouillage Radioelectrique.

Litho in U.S.A.

