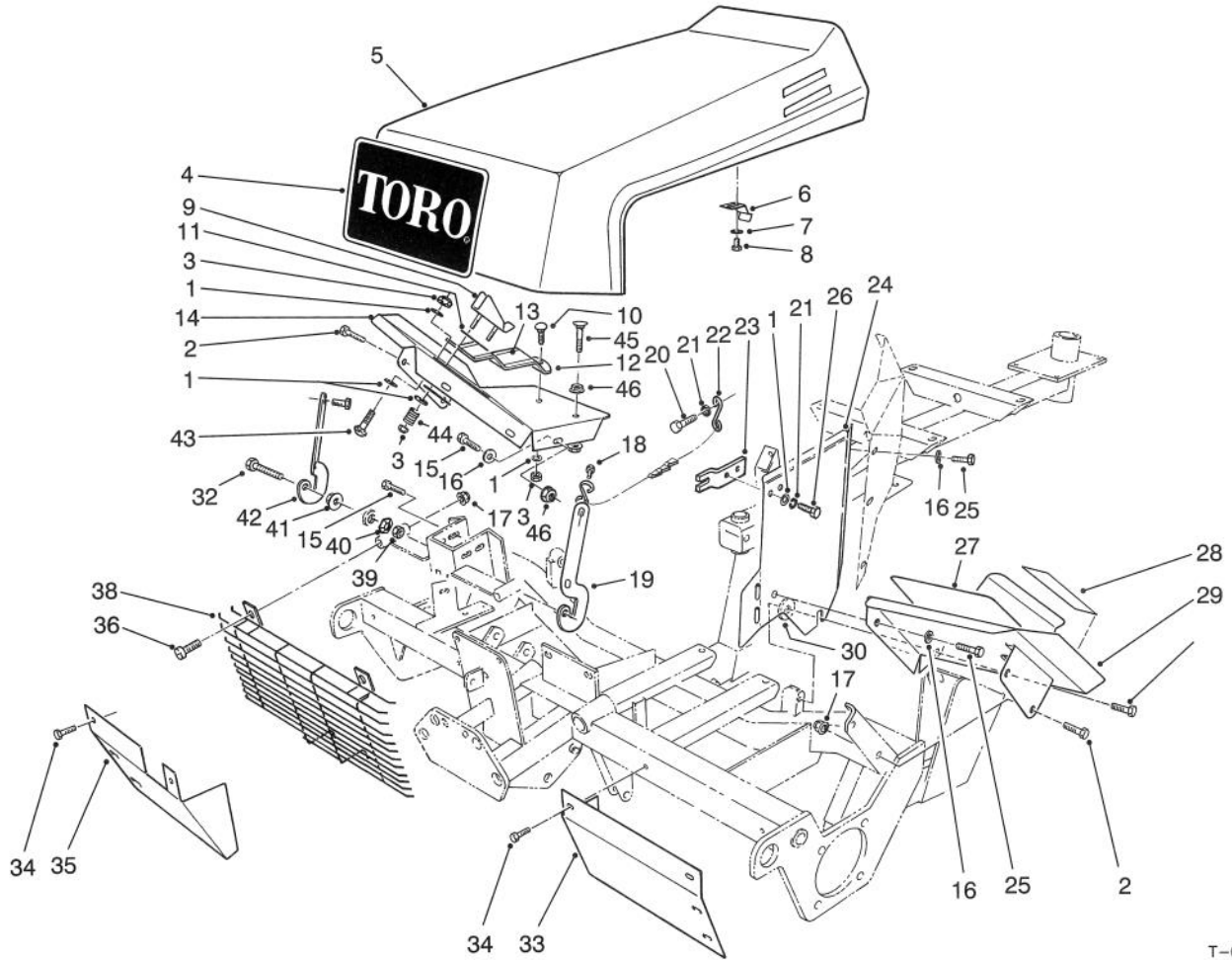




MODEL NO. 03430-60001 & UP

PARTS CATALOG

REELMASTER® 216G – 3WD
Traction Unit

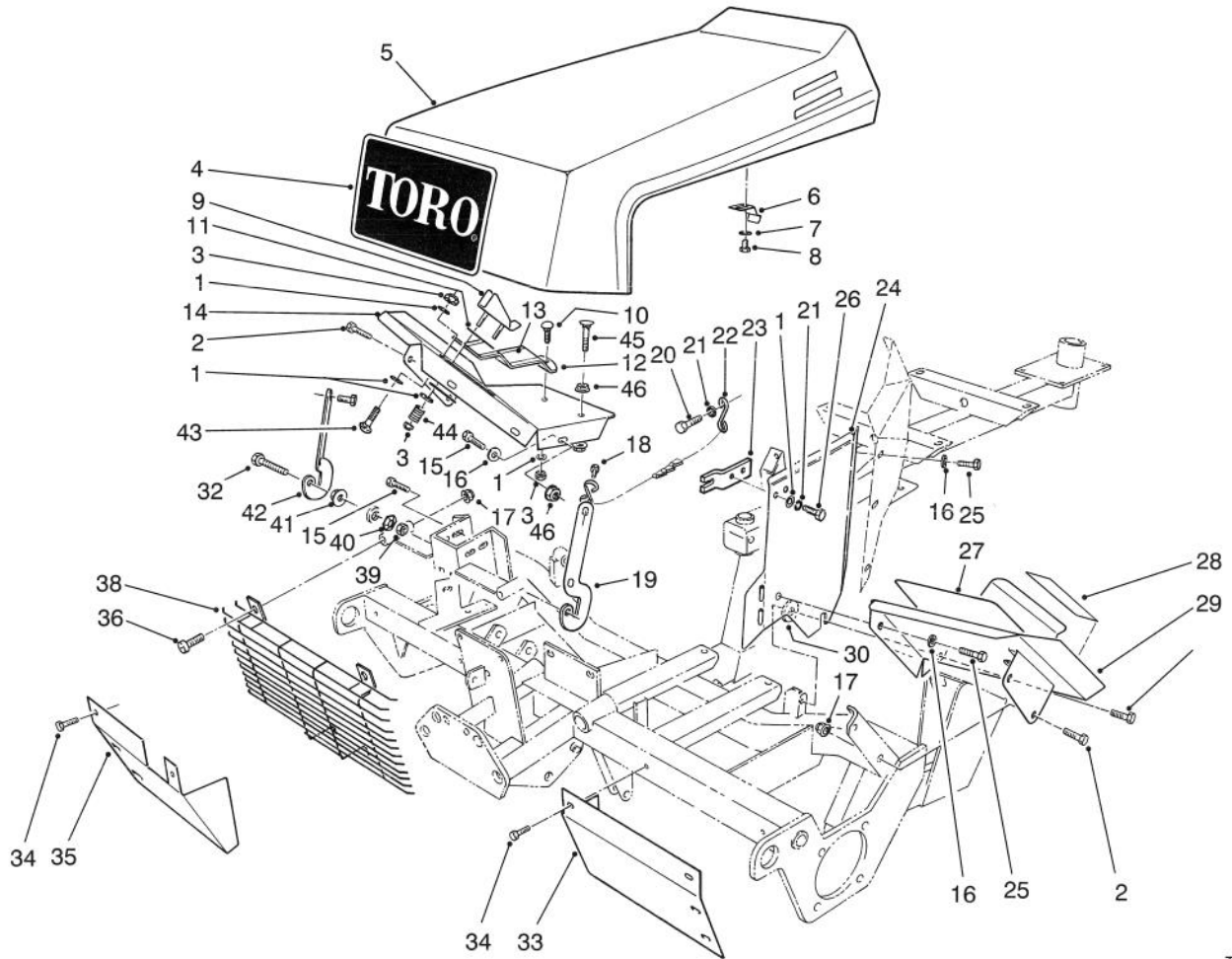


T-0881A

HOOD ASSEMBLY

Ref. No.	Part No.	Description	No. Used
1	3256-22	Washer - Flat	8
2	3234-17	Screw - Cap Hex. Hd.	10
3	3296-16	Nut - Lock	5
4	62-7400	Decal - Toro Logo	1
5	62-5400	Hood Assembly	1
6	75-9310	Latch - Hood	1
7	3256-21	Washer - Flat	2
8	32104-77	Screw - Hex. Hd. Self-Tap	2
9	62-7320	Stop - Traction Pedal	1
10	3229-1	Bolt - Carriage	2
11	62-7350	Slide - Pedal Stop	2
12	76-2200	Footrest - Traction	1
13	76-2260	Pad - Footrest	1
14	80-4240	Footrest R.H.	1
15	3234-17	Screw - Cap Hex. Hd.	6
16	3256-23	Washer - Flat	1

Ref. No.	Part No.	Description	No. Used
17	32128-25	Nut - Flange Lock	5
18	32144-22	Screw - Hex. Hd. Self-Tap	4
19	28-0120	Bracket - Hinge L.H.	1
20	321-5	Screw - Cap Hex. Hd.	1
21	3253-3	Washer - Lock	3
22	76-0130	Hood Stop Chain Assembly	1
23	72-9540	Bracket - Heat Shield	1
24	72-4150	Shield - Heat	1
25	322-3	Screw - Cap Hex. Hd.	31
26	321-2	Screw	2
27	66-6120	Pad-Foot	1
28	84-1650	Decal - Brake	1
29	72-4360	Footrest - L.H.	1
30	62-7190	Spacer	1
32	57-3210	Screw - Hex. Washer Hd.	2
33	83-9800	Shield - Front Grass L.H.	1

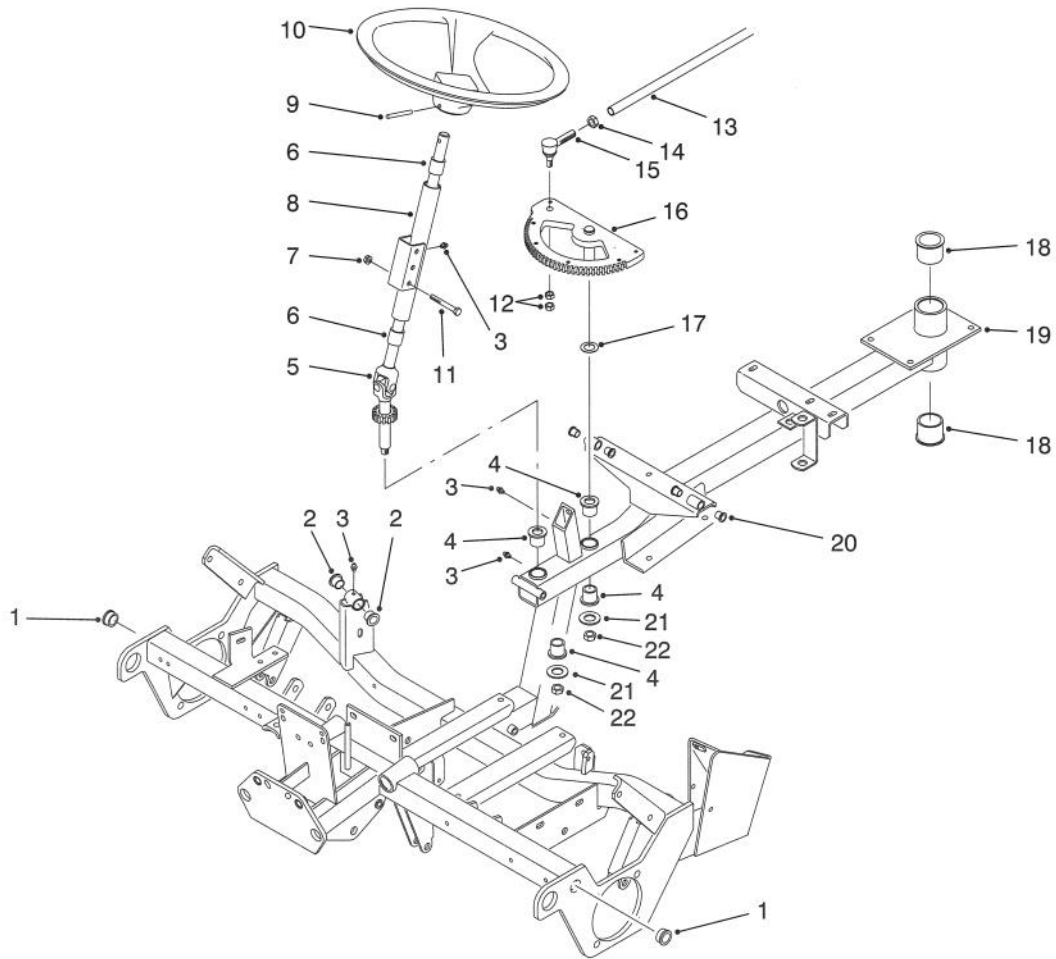


T-0881A

HOOD ASSEMBLY (Continued)

Ref. No.	Part No.	Description	No. Used
34	32104-82	Screw - Hex. Hd. Self-Tap	4
35	83-8860	Shield - Front R.H.	1
36	3250-50	Screw - Pan Hd.	2
38	66-5340	Grille - Front	1
39	3217-7	Nut - Hex.	2
40	3290-224	Washer - Lock Pyramidal	2

Ref. No.	Part No.	Description	No. Used
41	92-1841	Nut - Hood Pivot	2
42	28-0130	Bracket - Hinge R.H.	1
43	3229-22	Bolt - Carriage	1
44	10-4850	Spring - Compression	2
45	77-0480	Screw - Traction Stop	1
46	32128-20	Nut - Flange	3

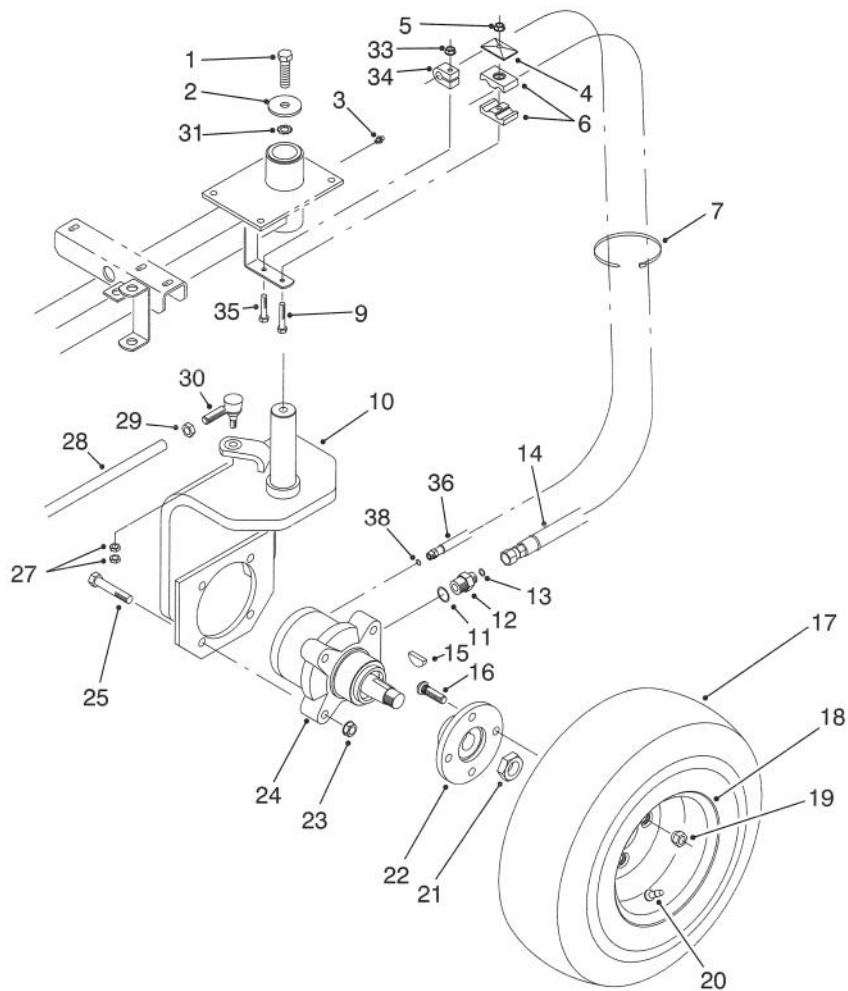


T-1415

FRAME ASSEMBLY

Ref. No.	Part No.	Description	No. Used
1	256-247	Bushing - Flange	2
2	256-287	Bushing - Flange	2
3	302-5	Fitting - Grease	4
4	92-3162	Bushing - Flange	4
5	92-3165	Steering Shaft & Gear	1
6	256-27	Bushing - Sleeve	2
7	3296-29	Nut - Flange Lock	1
8	61-2090	Steering Column Assembly (Incl. Ref. #6)	1
9	32121-10	Pin - Roll	1
10	76-1420	Wheel - Steering	1
11	322-12	Screw - Cap Hex. Hd.	1
12	3220-3	Nut - Jam	2

Ref. No.	Part No.	Description	No. Used
13	61-2070	Rod - Steering	1
14	3220-5	Nut - Jam	1
15	21-0141	Rod End Assembly (Incl. Ref. #12)	1
16	92-3172	Gear - Steering	1
17	3-6498	Washer - Thrust	A/R
18	256-245	Bushing - Flange	2
19	92-1820	Frame Assembly (Incl. Ref. #1, 2, 4, 19 & 20)	1
20	256-321	Bushing - Flange	4
21	3256-26	Washer - Flat	2
22	3296-28	Nut - Lock	2

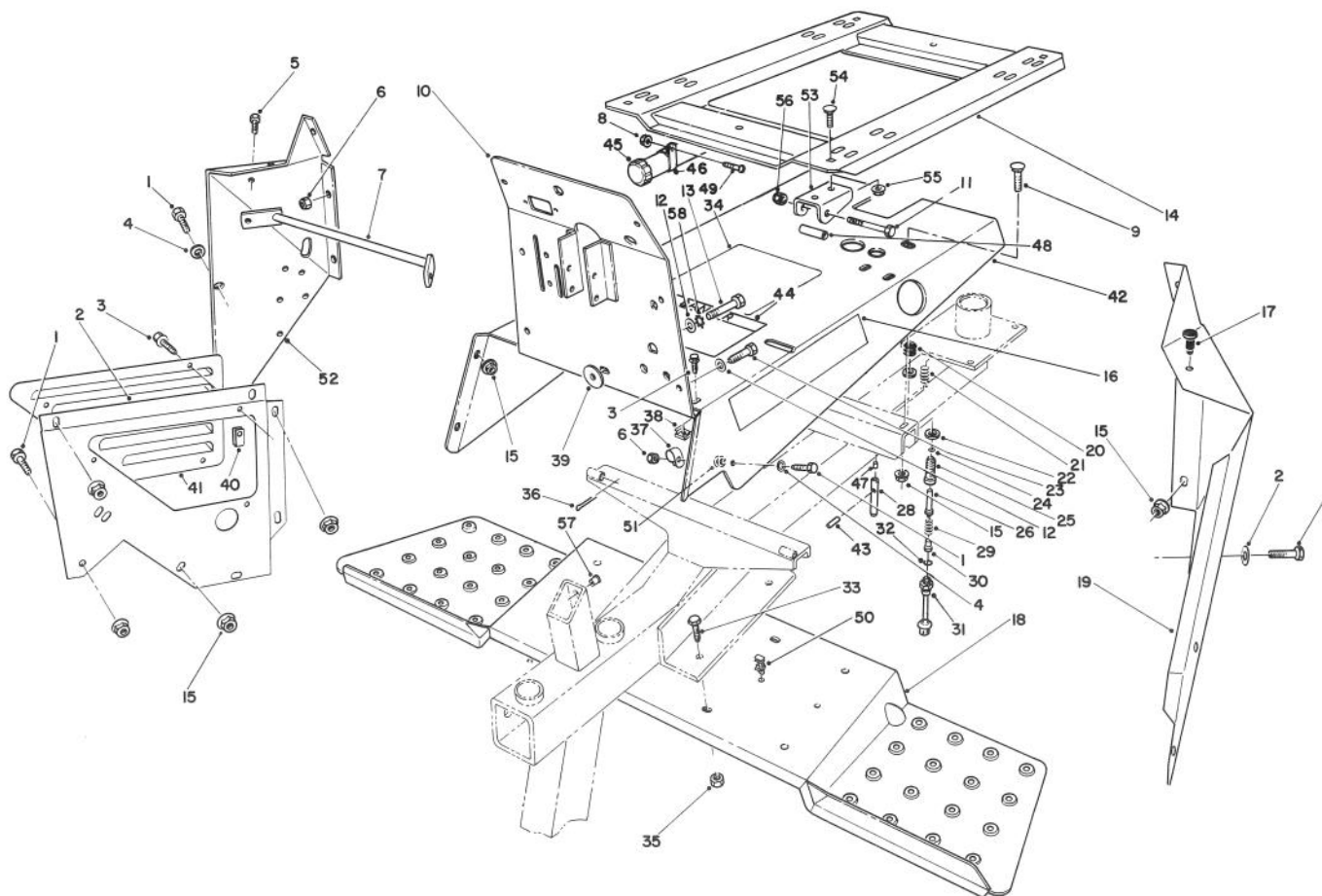


T-1428

REAR WHEEL ASSEMBLY

Ref. No.	Part No.	Description	No. Used
1	325-6	Screw - Cap Hex. Hd.	1
2	75-7730	Spacer	1
3	302-5	Fitting - Grease	1
4	69-9760	Plate - Cover	1
5	3296-29	Nut - Lock	1
6	56-7976	Clamp - Hose	2
7	3290-378	Tie - Cable	1
9	322-9	Screw - Cap Hex. Hd.	1
10	83-7270	Fork - Caster	1
11	237-80	Seal - O-Ring	2
12	340-141	Fitting - Hydraulic Straight (Incl. Ref. #11 & 13)	2
13	237-22	Seal - O-Ring	2
14	80-4090	Hose - Hydraulic	2
15	65-4640	Key - Woodruff	1
16	85-6540	Stud - Drive	4
17	93-0166	Tire	1
18	242-76	Rim	1
19	242-50	Nut - Lug	4

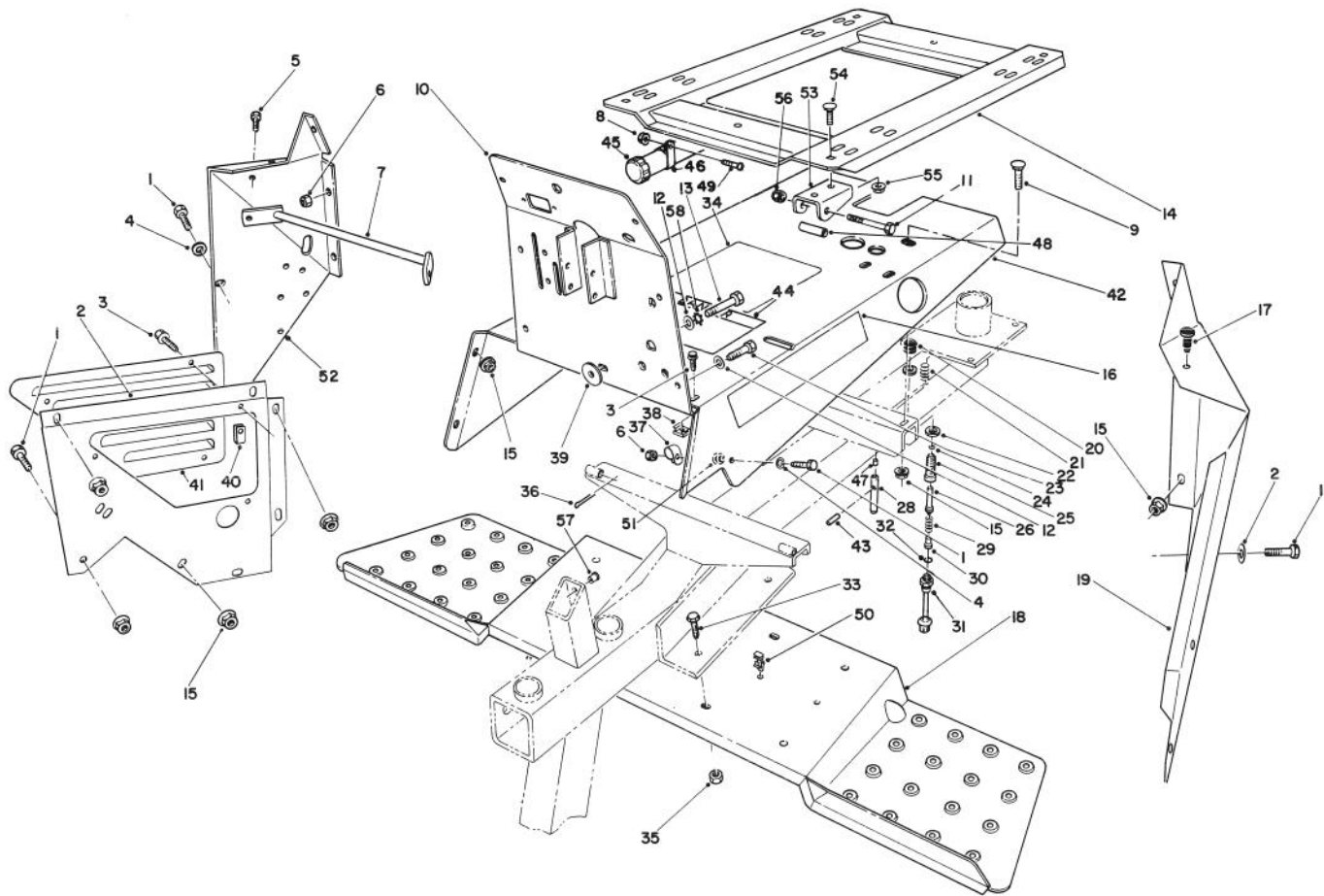
Ref. No.	Part No.	Description	No. Used
20	232-47	Valve Stem	1
21	26-3790	Nut - Lock	1
22	10-6870	Hub - Wheel	1
23	3296-23	Nut - Flange Lock	4
24	66-5291	Hydraulic Motor Assembly (Incl. Ref. #15)	1
25	325-11	Screw - Cap Hex. Hd.	4
27	3220-3	Nut - Jam	2
28	61-2070	Rod - Steering	1
29	3220-12	Nut - Jam	1
30	21-0151	Rod End Assembly (Incl. Ref. #27)	1
31	3255-2	Washer - Lock	1
33	3296-42	Nut - Lock	1
34	2412-114	Clamp	1
35	321-8	Screw - Cap Hex. Hd.	1
36	80-4080	Hydraulic Hose Assembly (Incl. Ref. #38)	1
38	237-78	Seal - O-Ring	1



T-1066A

SEAT SUPPORT ASSEMBLY

Ref. No.	Part No.	Description	No. Used	Ref. No.	Part No.	Description	No. Used
1	322-3	Screw - Hex. Hd. Cap	9	27	3234-17	Screw - Hex. Flange Hd.	2
2	75-9260	Support - Hydraulic Tank	1	28	27-9870	Pin - Seat Spring	1
3	3234-13	Screw - Hex. Flange Hd.	6	29	43-8600	Spring - Compression	1
4	3256-23	Washer - Flat	9	30	43-8610	Guide - Spring & Ball Seat	1
5	3234-14	Screw - Hex. Hd. Cap	2	31	72-4320	Switch - Neutral	1
6	3296-29	Nut - Lock	2	32	237-30	Seal - O-Ring	1
7	62-5330	Bracket - Side Panel	1	33	3255-8	Screw - Hex. Flange Hd.	4
8	32128-44	Nut - Flange	2	34	88-9550	Decal - Service Information	1
9	3230-15	Bolt - Carriage	2	35	32128-43	Nut - Flange Lock	4
10	93-4426	Panel W.A. - Instrument	1	36	3272-4	Pin - Cotter	2
11	321-11	Screw - Cap Hex. Hd.	2	37	2412-71	Clamp - R	1
12	3256-70	Washer - Flat	7	38	3290-196	Nut - Retainer	3
13	322-45	Screw - Hex. Hd. Cap	1	39	62-7170	Spacer	1
14	85-5330	Plate - Seat	1	40	3290-199	Nut - Speed	3
15	32128-25	Nut - Flange Lock	17	41	76-0500	Cover - Reservoir Support	1
16	61-3840	Decal - Reelmaster 216	2	42	92-3180	Panel	1
17	237-37	Bumper - Rubber	2	43	32121-6	Pin - Roll	1
18	83-9730	Step - Foot	1	44	83-9550	Decal - Warning	1
19	72-4350	Panel - Access L.H.	1	45	74-0720	Tube - Manual	1
20	43-8870	Boot - Switch	1	46	2412-133	Clamp - R	2
21	37-9590	Spring	1	47	28-6180	Pin	1
22	218-461	Nut - Jam	2	48	85-5340	Tube - Pivot	2
23	322-43	Screw - Cap Hex. Hd.	1	49	32122-14	Screw - Truss Hd.	2
24	237-7	Seal - O-Ring	1	50	80-3940	Clip - Rosebud	1
25	43-8620	Guide - Switch Pin	1	51	237-88	Grommet	1
26	43-8860	Plunger - Switch	1	52	61-3880	Panel - Access R.H.	1

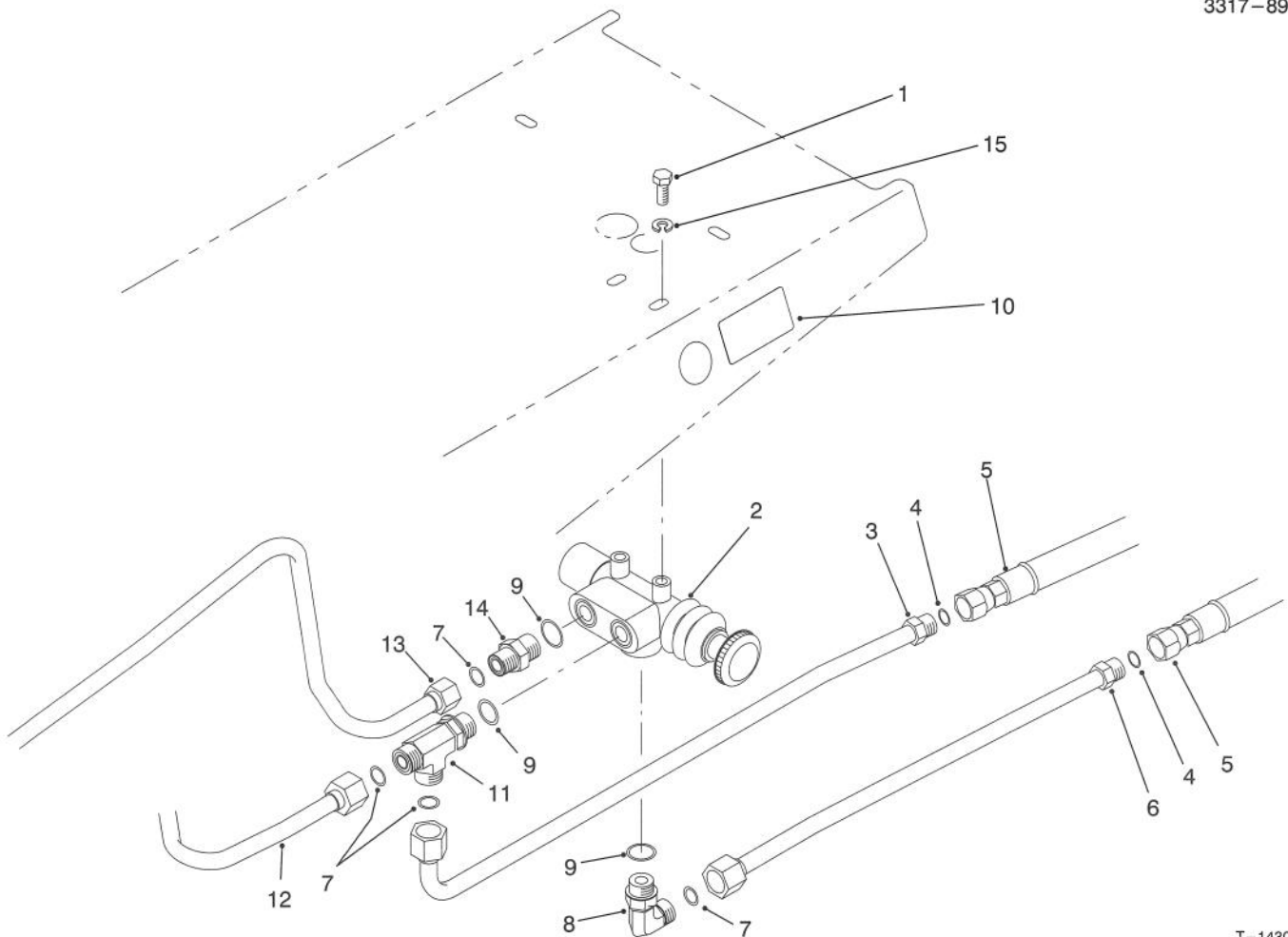


T-1066A

SEAT SUPPORT ASSEMBLY (Continued)

Ref. No.	Part No.	Description	No. Used
53	85-5230	Bracket - Seat Pivot	2
54	3229-22	Bolt - Carriage	2
55	32128-33	Nut - Flange Lock	2

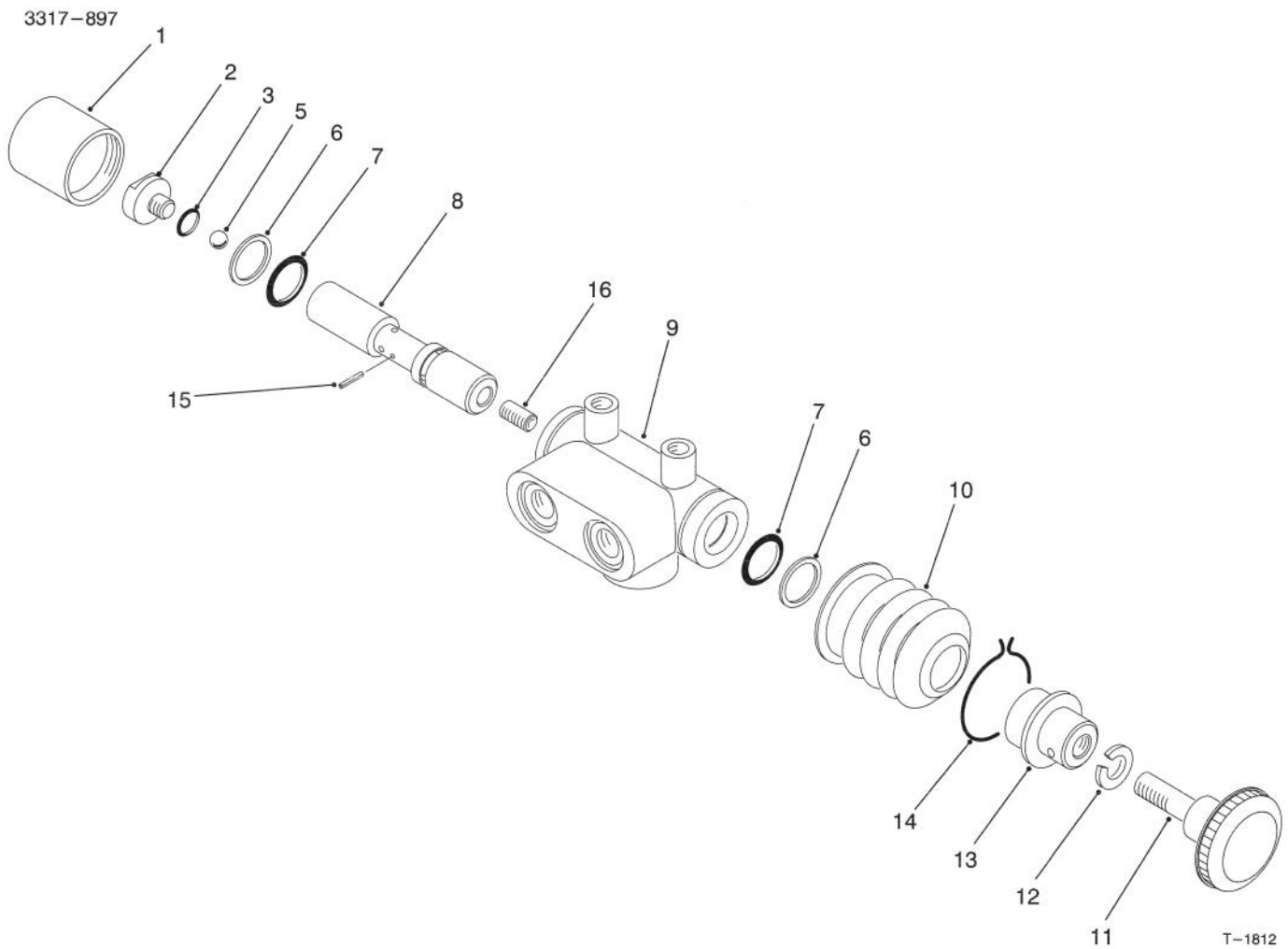
Ref. No.	Part No.	Description	No. Used
56	3296-42	Nut - Lock	2
57	32148-8	Insert - Threaded	1
58	3255-8	Washer - Lock E.T.L.W.	1



T-1430

REAR WHEEL DRIVE VALVE ASSEMBLY

Ref. No.	Part No.	Description	No. Used	Ref. No.	Part No.	Description	No. Used
1	322-1	Screw - Cap Hex. Hd.	2	9	237-79	Seal - O-Ring (Incl. Ref. #7 & 9)	1
2	92-3196	2 Position Valve Assembly	1	10	92-3179	Decal - Control	1
3	71-0710	Hydraulic Tube Assembly (Incl. Ref. #4)	1	11	340-109	Fitting - Hydraulic Tee (Incl. Ref. #7 & 9)	1
4	237-22	Seal - O-Ring	2	12	83-9500	Tube - Hydraulic	1
5	80-4090	Hose - Hydraulic	2	13	83-9460	Tube - Hydraulic	1
6	71-0840	Hydraulic Tube Assembly (Incl. Ref. #4)	1	14	3253-4	Washer - Lock	2
7	237-30	Seal - O-Ring	4	15	340-4	Fitting - Hydraulic Straight (Incl. Ref. #7 & 9)	1
8	340-98	Fitting - Hydraulic 90°					

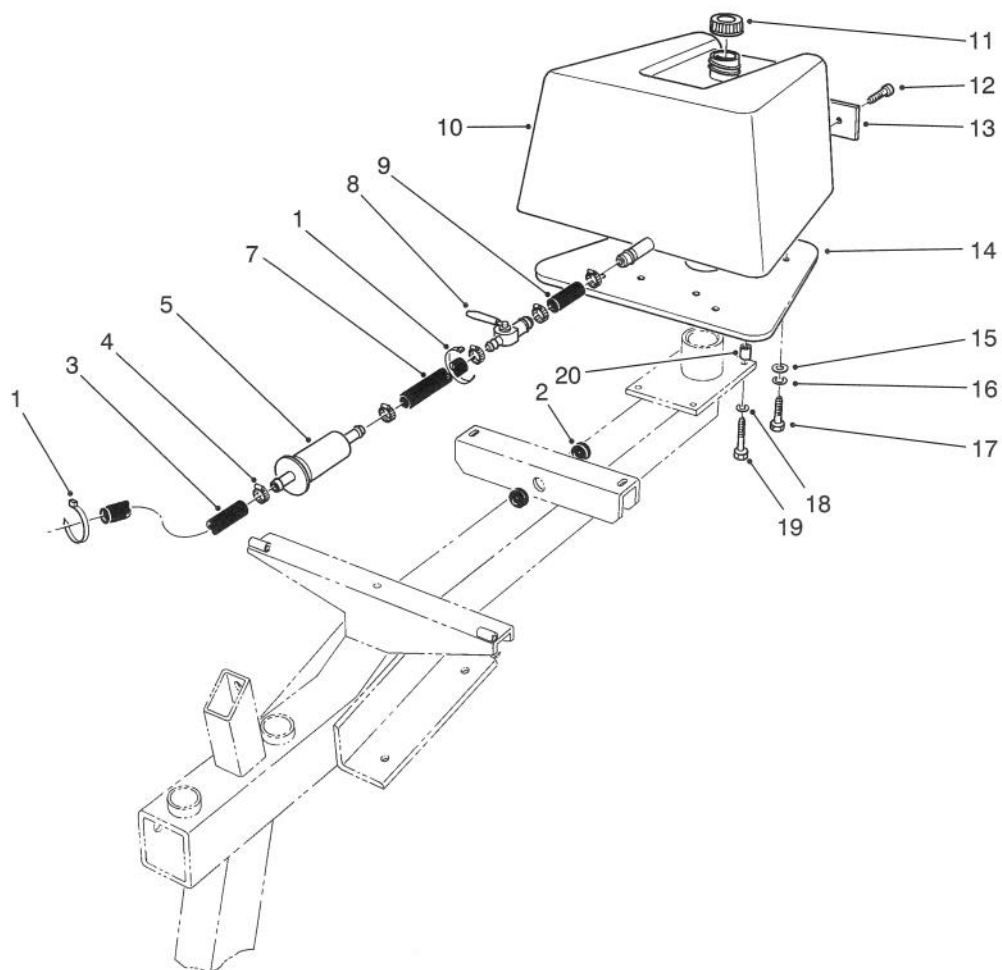


TWO POSITION VALVE ASSEMBLY NO. 92-3196

Ref. No.	Part No.	Description	No. Used
1	92-7904	Cap - Valve	1
2	94-3427	Plug Assembly (Incl. Ref. #3)	1
3	237-22	Seal - O-Ring	1
5	354-23	Ball	1
6		Ring - Back-Up	2
7		Seal - O-Ring	2
8		Spool - Valve	1
9		Housing - Valve	1
10	92-7911	Boot	1

Ref. No.	Part No.	Description	No. Used
11	233-46	Knob	1
12	3253-5	Washer - Lock	1
13	94-3426	Stop - Valve	1
14	92-7912	Retainer - Boot	1
15	32121-38	Pin - Spring	1
16	94-3425	Screw	1
*	92-7913	Seal Repair Kit (Incl. Ref. #1, 3, 6, 7, 10 & 14)	1

*Not Illustrated



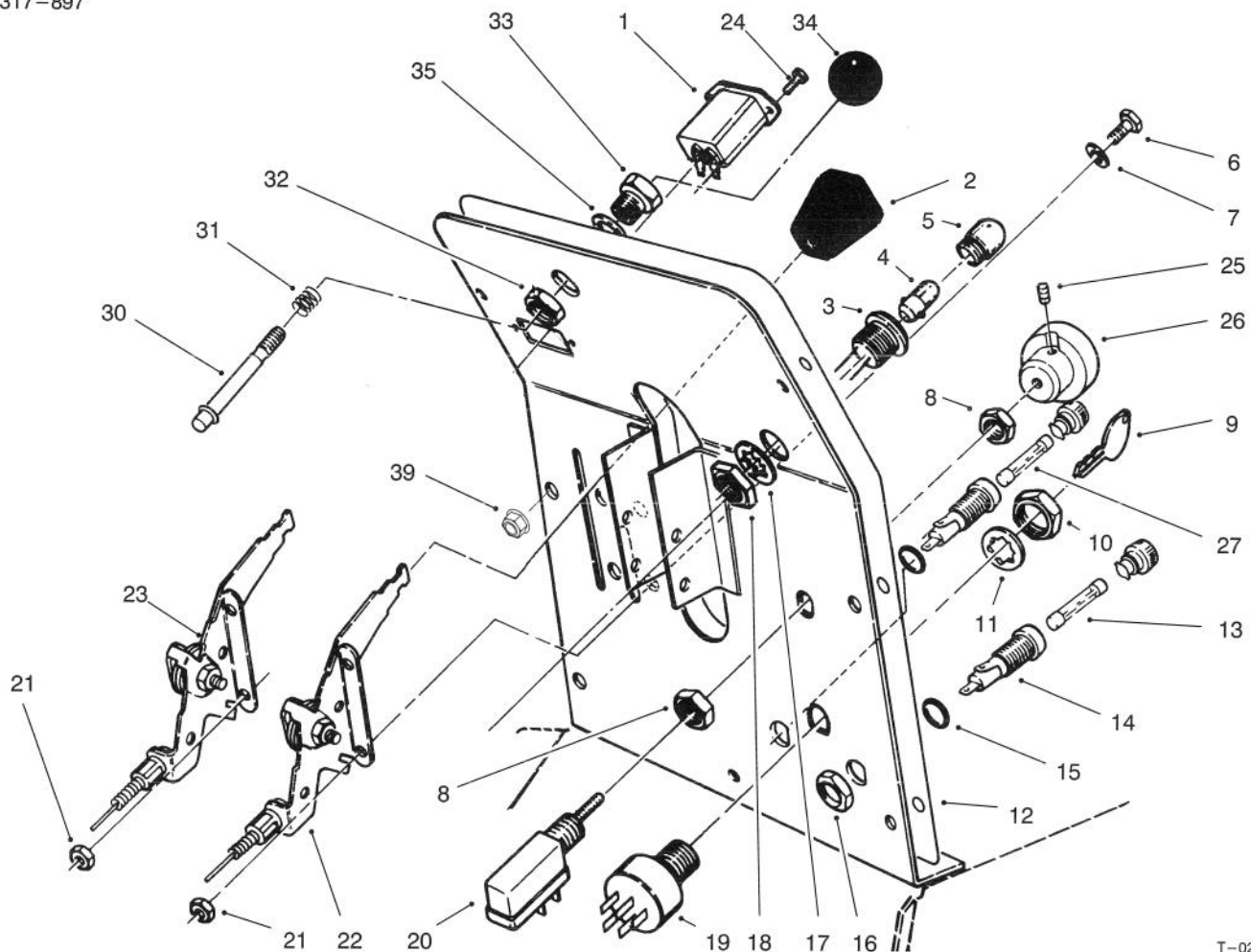
T-1067

FUEL TANK ASSEMBLY

Ref. No.	Part No.	Description	No. Used	Ref. No.	Part No.	Description	No. Used
1	3290-379	Tie - Cable	2	13	61-3310	Plate - Toro Logo	1
2	237-125	Grommet	2	14	61-2680	Weight - Standard	1
3	47-2980	Hose - Fuel	1	*	62-5140	Weight - 8 Blade (Optional)	1
4	2412-36	Clamp - Hose	6	15	3256-23	Washer - Flat	4
5	38-8000	Filter - Fuel	1	16	3253-4	Washer - Lock	4
7	47-2988	Hose - Fuel	1	17	322-3	Capscrew - Hex. Hd.	4
8	61-3550	Valve - Ball	1	18	3253-21	Washer - Lock	4
9	56-2230	Hose - Fuel	1	19	323-9	Capscrew - Hex. Hd.	4
10	61-0030	Tank - Fuel	1	†20	61-2220	Spacer	4
11	93-7198	Cap - Fuel	1				
12	3290-470	Screw - Machine	2				

*Not Illustrated

†Use with 5 blade cutting units only.

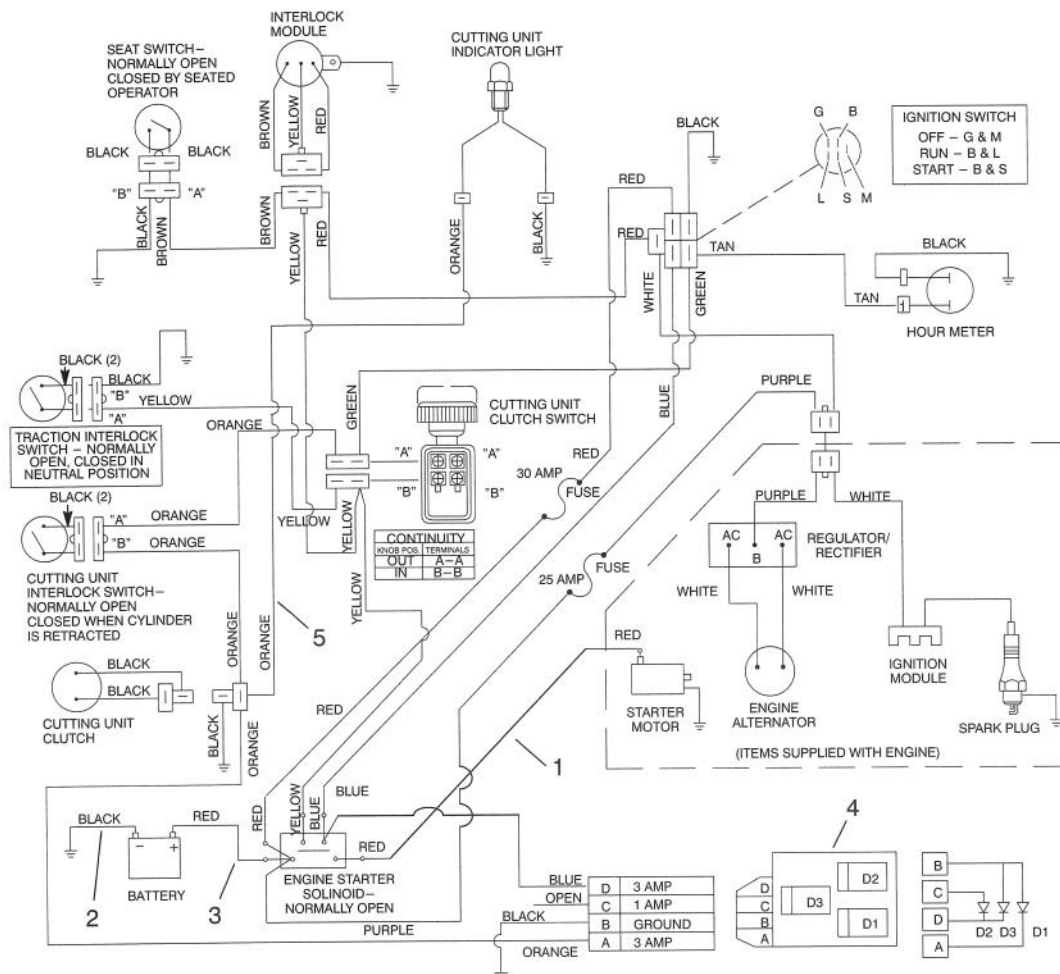


T-0264A

INSTRUMENT PANEL ASSEMBLY

Ref. No.	Part No.	Description	No. Used	Ref. No.	Part No.	Description	No. Used
1	75-6820	Meter - Hour	1	18	218-535	Nut	1
2	66-0120	Knob	2	19	23-0660	Switch - Key (Incl. Ref. #9-11)	1
3	44-2212	Lamp - Pilot (Incl. Ref. #4, 5 & 17-18)	1	20	92-3194	Switch - Clutch (Incl. Ref. #8, 25 & 26)	1
†4	219-18	Bulb - Light (GE #1893)	1	21	3296-42	Nut - Lock	4
5	218-562	Lens	1	22	80-4120	Control - Choke	1
6	321-39	Screw - Cap Hex. Hd.	4	23	80-4110	Control - Throttle	1
7	3256-1	Washer - Flat	4	24	32144-18	Screw - Cap Hex. Hd.	2
8	3218-19	Nut - Hex.	2	25	3298-8	Screw - Set	1
9	63-8360	Key	1	26	92-3195	Knob	1
10	218-461	Nut	1	27	93-4410	Fuse - 25 Amp. Slo-Blo	1
11	3254-5	Washer - Lock	1	30	75-9330	Pin - Hood Latch	1
12	93-4424	Decal - Instrument Panel	1	31	5-4723	Spring - Compression	1
†13		Fuse - 30 Amp.	1	32	3218-5	Nut - Hex. Jam	1
14	218-489	Fuse Holder Assembly (Incl. Ref. #15-16)	2	33	75-9320	Bushing - Hood Latch	1
15		Seal - O-Ring	2	34	233-17	Knob	1
16		Nut - Hex.	2	35	3256-26	Washer - Flat	1
17	218-536	Washer - Lock	1				

†Obtain Locally

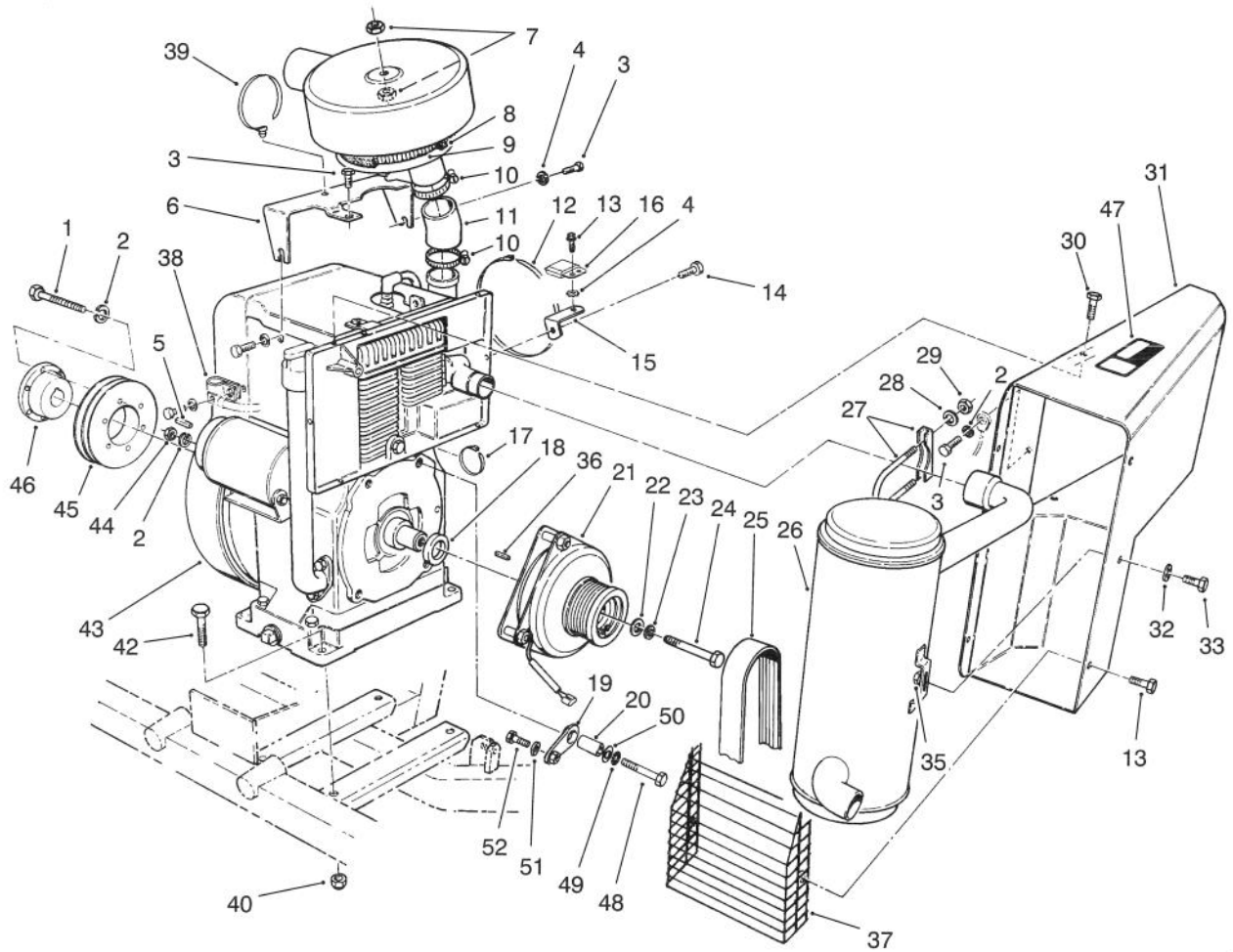


T-1068A

ELECTRICAL SCHEMATIC

Ref. No.	Part No.	Description	No. Used
1	61-2660	Wire - Solenoid/Starter	1
2	61-2670	Wire - Ground	1
3	10-7130	Wire - Battery/Solenoid	1

Ref. No.	Part No.	Description	No. Used
4	92-3191	Diode - Circuit Board	1
5	94-3415	Wire Harness Assembly	1

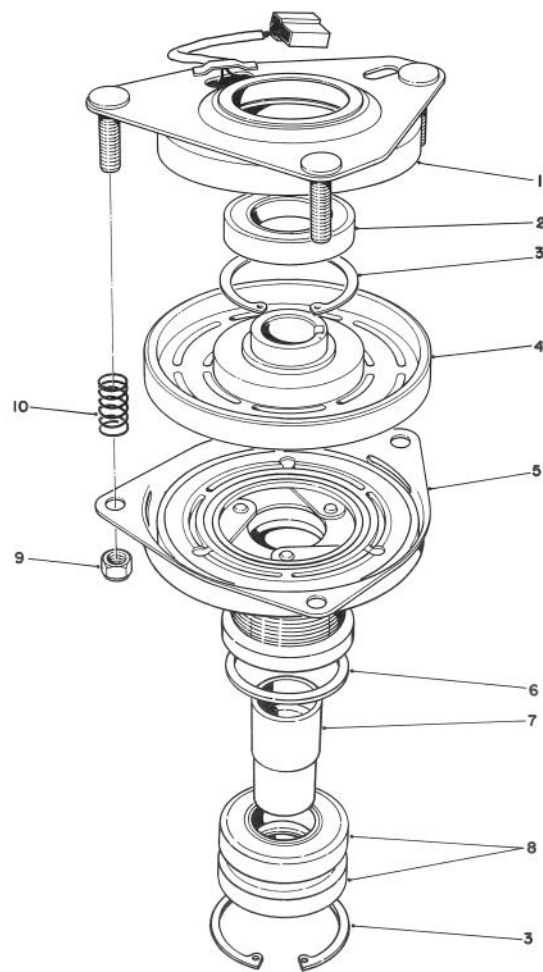


-0266

ENGINE & CLUTCH ASSEMBLY

Ref. No.	Part No.	Description	No. Used
1	321-13	Screw - Cap Hex. Hd.	3
2	3253-3	Washer - Lock	3
3	3234-4	Screw - Cap Hex. Hd.	3
4	3255-7	Washer - Lock	1
5	10-7070	Key - Square	1
6	61-2120	Bracket - Air Cleaner	1
7	3296-56	Nut - Lock	2
8		Precleaner - Air Cleaner	1
9		Element - Air Cleaner	1
10	2412-92	Clamp - Hose	2
11	61-3470	Hose	1
12	3333-975	Tie - Cable	1
13	49-2040	Screw - Tapping	5
14	3234-4	Screw - Cap Hex. Hd.	1
15	76-0070	Bracket - Interlock Module	1
16	94-3428	Module - Ignition	1
17	3290-378	Tie - Cable	1
18	70-7080	Spacer - Clutch	1
19	92-1810	Arm - Torque	1
20	92-1813	Spacer - Torque Arm	1
21	70-8020	Clutch Assembly	1
22	70-8040	Washer - Flat	1
23	3253-27	Washer - Lock	1
24	3213-9	Capscrew - Hex. Hd.	1
25	61-3390	Belt - Poly-V	1
26	92-7949	Muffler	1
27	2112-9	Clamp - Muffler (Incl. Ref. #28-29)	1

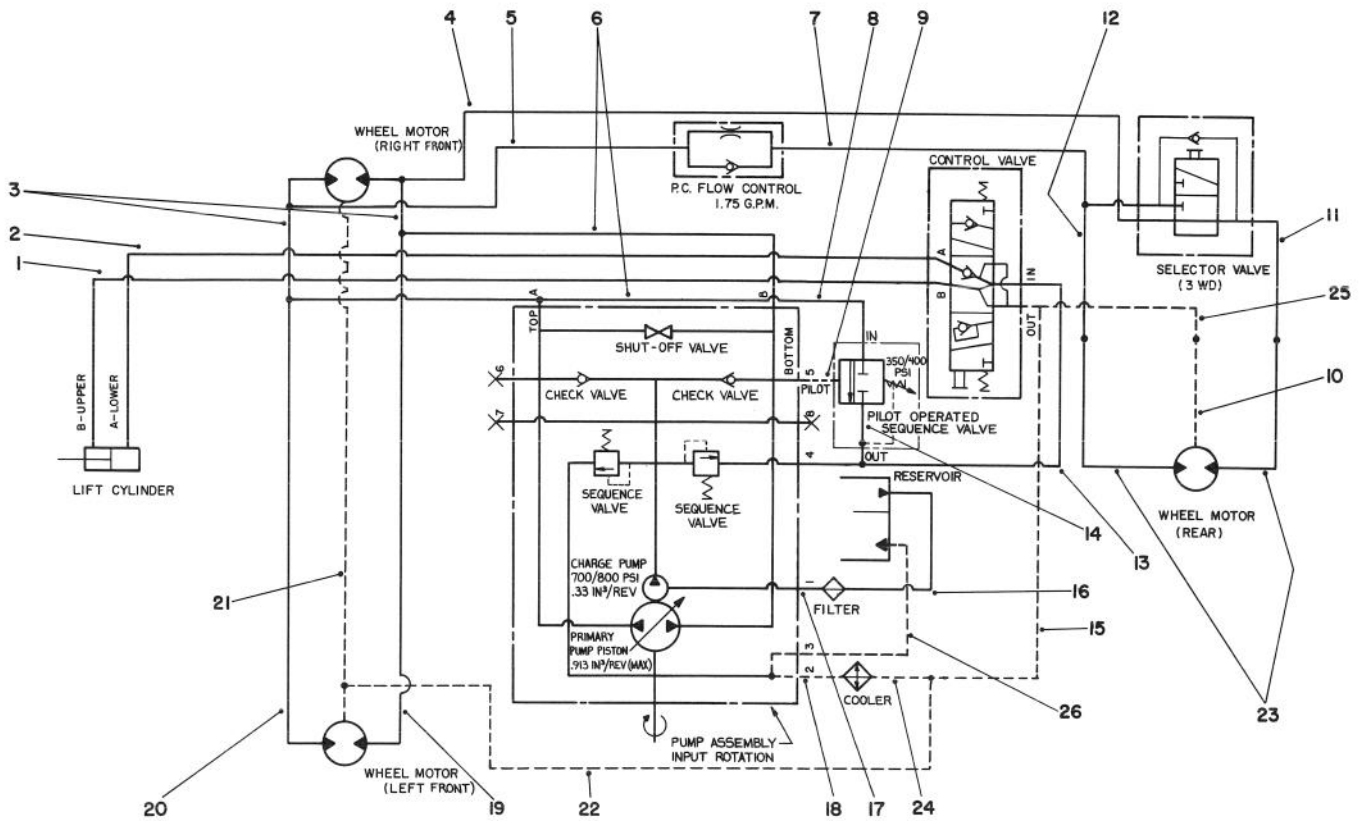
Ref. No.	Part No.	Description	No. Used
28	3253-4	Washer - Lock	2
29	3217-6	Nut - Hex.	2
30	12-3270	Screw - Cap Hex. Hd.	4
31	61-0020	Shroud - Muffler	1
32	3256-70	Washer - Flat	2
33	322-46	Screw - Cap Hex. Hd.	2
35	32128-25	Nut - Lock	2
36	70-8030	Key	1
37	84-1840	Grille - Muffler	1
38	2412-41	Clamp - R	1
39	3290-410	Tie - Push Mount	1
40	3296-39	Nut - Lock	4
42	323-8	Screw - Cap Hex. Hd.	4
43		Engine - Kohler Model No. M16 Spec. No. 711563	1
44	3218-1	Nut - Hex.	1
45	92-1819	Pulley - Engine	1
46	61-3340	Bushing - Taper (Incl. Ref. #1-2)	1
47	66-6840	Decal - Hot	1
48	324-7	Screw - Cap Hex. Hd.	1
49	3253-6	Washer - Lock	1
50	3256-25	Washer - Flat	1
51	92-1814	Spacer - Torque Arm	1
52	322-3	Screw - Cap Hex. Hd.	1



T-0267

ELECTRIC CLUTCH ASSEMBLY NO. 70-8020

Ref. No.	Part No.	Description	No. Used	Ref. No.	Part No.	Description	No. Used
1	44-8350	Field Assembly (Incl. Ref. #2 & 3)	1	5	62-5250	Armature & Pulley Assembly (Incl. Ref. #3, 6, 7 & 8)	1
2	251-292	Bearing - Field	1	6	44-8330	Spacer - Pulley Bearing	1
3	44-8310	Ring - Retaining	2	7	76-0080	Collar - Bearing	1
4	44-8360	Field Coil, Rotor & Bearing Assembly (Incl. Ref. #1)	1	8	251-291	Bearing - Pulley	2
				9	3296-6	Nut - Lock	3
				10	44-8320	Spring - Compression	3

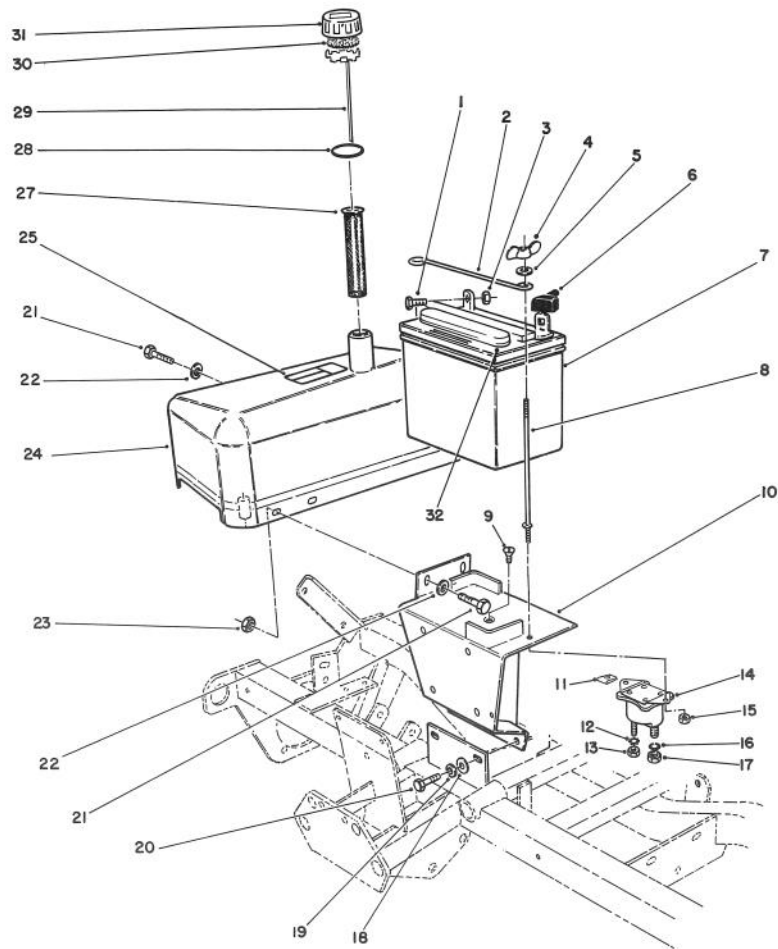


T-0891

HYDRAULIC SCHEMATIC

Ref. No.	Part No.	Description	No. Used
1	61-2500	Hose Assembly	1
2	61-2490	Hose Assembly	1
3	71-0870	Tube Assembly	2
4	71-0910	Tube Assembly	1
5	71-0880	Tube Assembly	1
6	76-2520	Hose Assembly	2
7	71-0850	Tube Assembly	1
8	76-2530	Hose Assembly	1
9	63-4890	Hose Assembly	1
10	80-4080	Tube Assembly	1
11	71-0840	Tube Assembly	1
12	71-0710	Tube Assembly	1
13	61-2520	Hose Assembly	1

Ref. No.	Part No.	Description	No. Used
14	63-4880	Hose Assembly	1
15	61-2510	Hose Assembly	1
16	61-2550	Hose Assembly	1
17	61-2540	Hose Assembly	1
18	92-2407	Hose Assembly	1
19	61-3070	Tube Assembly	1
20	61-3080	Tube Assembly	1
21	76-2550	Hose Assembly	1
22	76-2540	Hose Assembly	1
23	80-4090	Hose Assembly	2
24	92-2406	Hose Assembly	1
25	71-0860	Tube Assembly	1
26	92-2408	Hose Assembly	1

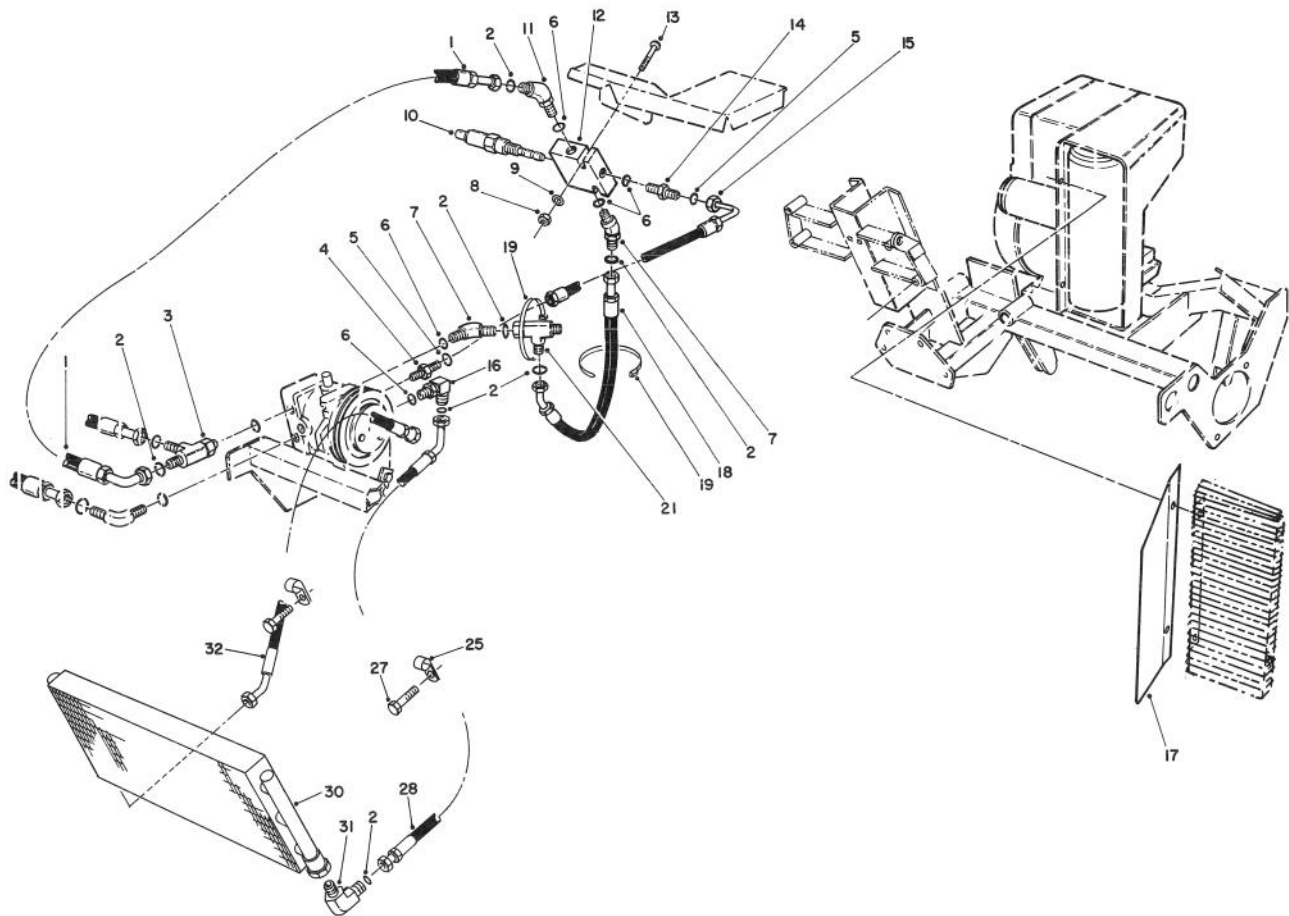


T-0885

HYDRAULIC TANK & BATTERY ASSEMBLY

Ref. No.	Part No.	Description	No. Used	Ref. No.	Part No.	Description	No. Used
1	322-3	Screw - Cap Hex. Hd.	2	18	3256-24	Washer - Flat	2
2	72-4790	Clamp - Battery	1	19	3253-21	Washer - Lock	2
3	3217-6	Nut - Hex.	2	20	11-0590	Screw - Cap Hex. Hd.	2
4	32103-12	Nut - Wing	2	21	322-43	Screw - Cap Hex. Hd.	4
5	3256-1	Washer - Flat	2	22	3256-70	Washer - Flat	4
6	28-8080	Boot - Battery Terminal	1	23	32128-25	Nut - Lock	2
7	82-4640	Battery - 12 Volt	1	24	61-0100	Tank - Hydraulic	1
8	10-8120	Bolt - Battery	2	25	66-6840	Decal - Hot	1
9	32108-101	Screw - Flathead	1	27	61-2790	Screen - Filler	1
10	76-0440	Battery Support W.A.	1	28	237-71	O-Ring	1
11	3290-199	Nut - Speed	1	29	76-0240	Dipstick Assembly	1
12	3254-1	Washer - Lock	2	30	76-0220	Foam - Oil Filter	1
13	3219-14	Nut - Hex.	2	31	76-0190	Cap - Oil	1
14	28-4210	Solenoid - Starter	1	32	84-1830	Cap - Battery Vent	1
15	32149-2	Nut - Hex.	2	*	76-0200	Oil Cap Assembly (Incl. Ref. #28-31)	1
16	3253-4	Washer - Lock	2				
17	3218-13	Nut - Lock	2				

*Not Illustrated

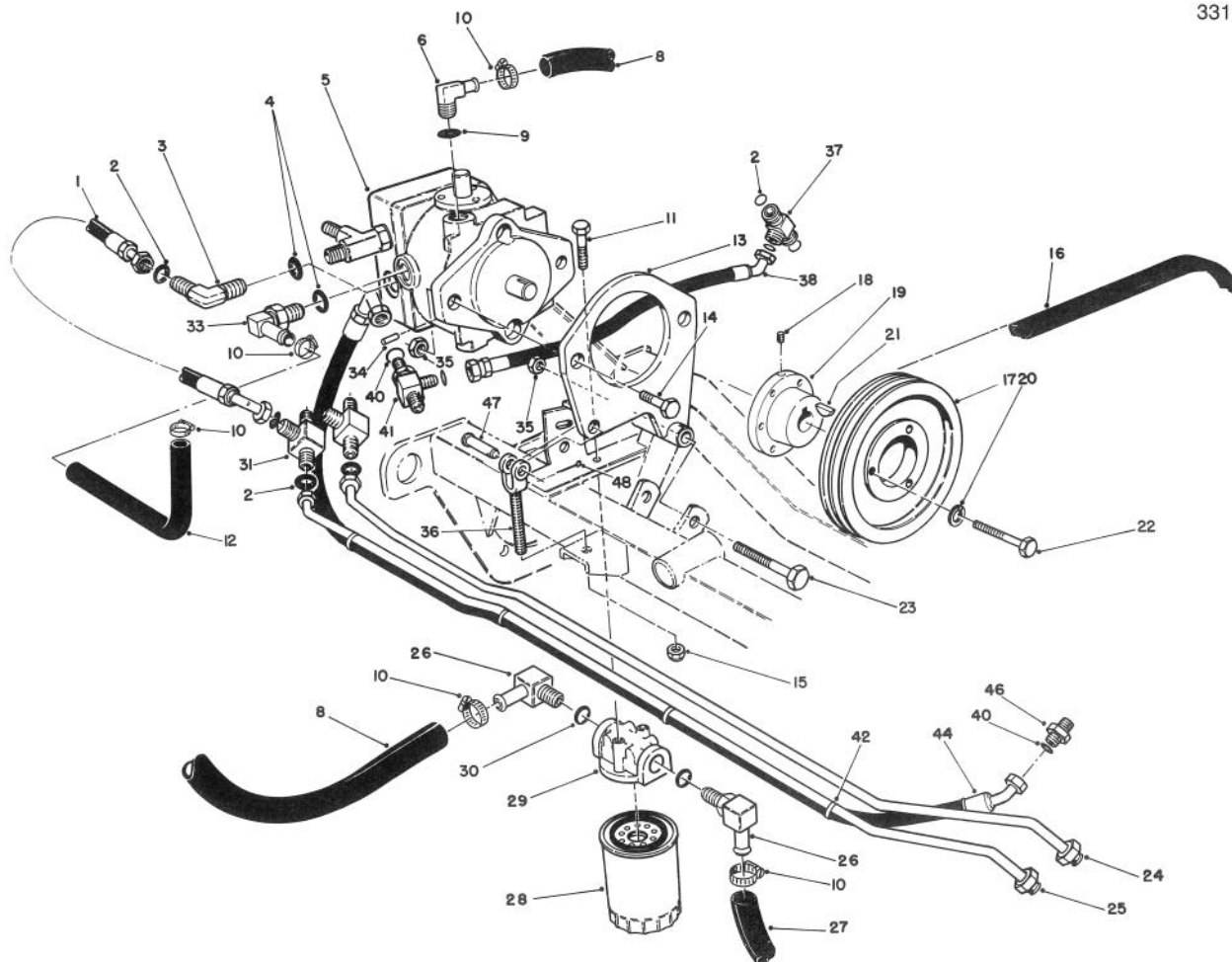


T-0886

HYDRAULIC OIL COOLER ASSEMBLY

Ref. No.	Part No.	Description	No. Used	Ref. No.	Part No.	Description	No. Used
1	76-2530	Hydraulic Hose Assembly	1	15	63-4890	Hydraulic Hose Assembly	1
2	237-30	Seal - O-Ring	8	16	340-99	Fitting - Hydraulic 90° (Incl. Ref. #2)	1
3	340-109	Fitting - Male Tee (Incl. Ref. #2)	1	17	63-8940	Shield - Cooler	1
4	340-92	Fitting - Straight (Incl. Ref. #5)	1	18	63-4880	Hydraulic Hose Assembly	1
5	237-150	Seal - O-Ring	2	19	3290-379	Tie - Cable	2
6	237-22	Seal - O-Ring	5	21	340-104	Fitting - Male/Female Tee (Incl. Ref. #2)	1
7	340-96	Fitting - 45° Elbow (Incl. Ref. #2 & 6)	2	25	2412-81	Clamp - R	2
8	32128-32	Nut - Hex. Flange	2	27	32144-69	Screw - Self Tapping	2
9	3256-22	Washer - Flat	2	28	92-2407	Hydraulic Hose Assembly	1
10	63-8790	Cartridge Valve Assembly	1	30	63-5400	Exchanger - Heat	1
11	63-8770	Fitting - 45° Orifice (Incl. Ref. #2 & 6)	1	31	340-168	Fitting - 90° Male Elbow (Incl. Ref. #2)	2
12	63-5080	Pressure Sequence Valve (Incl. Ref. #10)	1	32	92-2406	Hydraulic Hose Assembly	1
13	321-11	Screw - Cap Hex. Hd.	2	*	63-8800	Seal Kit Pressure Sequence Valve (For Ref. #10 & 12)	1
14	340-1	Fitting - Straight (Incl. Ref. #5 & 6)	1	*	56-7982	Sleeve - Protective	1

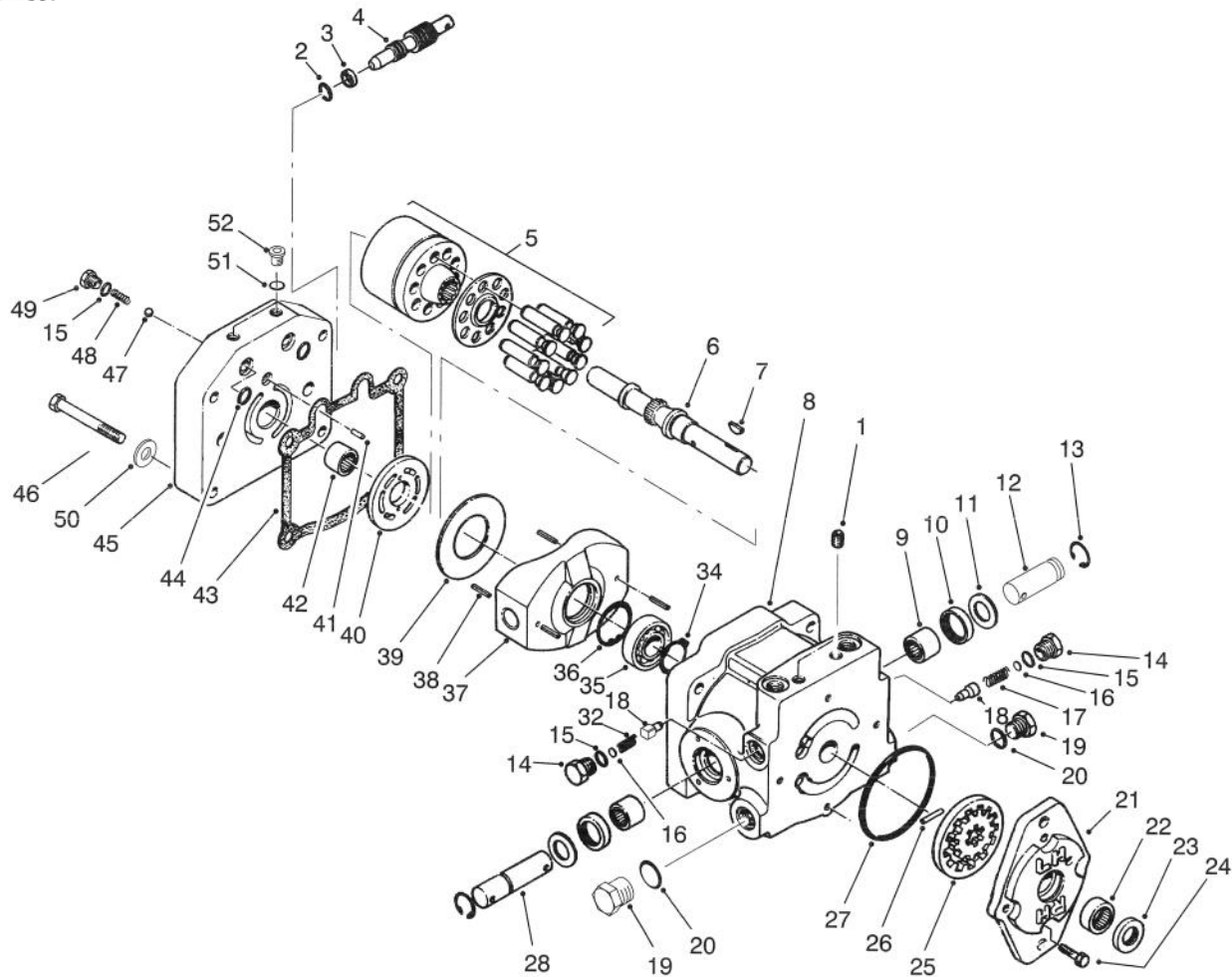
*Not Illustrated



T-0887

HYDRAULIC DRIVE ASSEMBLY

Ref. No.	Part No.	Description	No. Used	Ref. No.	Part No.	Description	No. Used
1	76-2520	Hydraulic Hose	2	23	325-18	Screw - Cap Hex Hd.	1
2	237-30	O-Ring	12	24	61-3080	Tube - Hyd. L.H. (Front)	1
3	340-98	Fitting - 90° Elbow (Incl. Ref. #2 & 4)	1	25	61-3070	Tube - Hyd. L.H. (Rear)	1
4	237-79	O-Ring	2	26	23-8910	Fitting - 90° Hose Elbow (incl. Ref. #30)	2
5	92-9023	Pump Assembly (Incl. Ref. #21)	1	27	61-2550	Hose - Hydraulic	1
6	61-2710	Fitting - 90° Hose Elbow (Incl. Ref. #9)	1	28	54-0110	Filter - Oil	1
8	61-2540	Hose - Hydraulic	1	29	61-3770	Head - Filter	1
9	237-80	O-Ring	1	30	237-117	O-Ring	2
10	2412-24	Clamp - Hose	6	31	340-102	Fitting - Tee (Incl. Ref. #2)	2
11	3234-4	Screw - Hex Washer Hd.	2	33	353-954	Fitting - 90° Elbow (Incl. Ref. #4)	1
12	92-2408	Hose - Hydraulic	1	34	32121-34	Pin - Roll	1
13	61-2230	Plate - Pump Mount	1	35	3296-23	Nut - Lock	3
14	325-7	Screw - Cap Hex Hd.	2	36	76-2220	Adjustment Yoke Assembly	1
15	3296-6	Nut - Lock	1	37	340-102	T-Fitting	1
16	92-1821	V-Belt - Pump	1	38	76-2540	Hose Assembly - Hyd.	1
17	61-3320	Pulley - Pump	1	40	237-30	O-Ring	3
18	3245-9	Screw - Set	1	41	340-140	Fitting - Tee	1
19	61-3350	Bushing - Taper (Incl. Ref. #12,18 & 22)	1	42	3290-379	Cable Tie	4
20	3253-3	Washer - Lock	3	44	76-2550	Hose Assembly	1
21	3257-32	Key - Woodruff	1	46	340-92	Fitting	1
22	321-13	Screw - Cap Hex Hd.	3	47	283-2	Pin - Yoke	1
				48	3272-6	Pin - Cotter	1



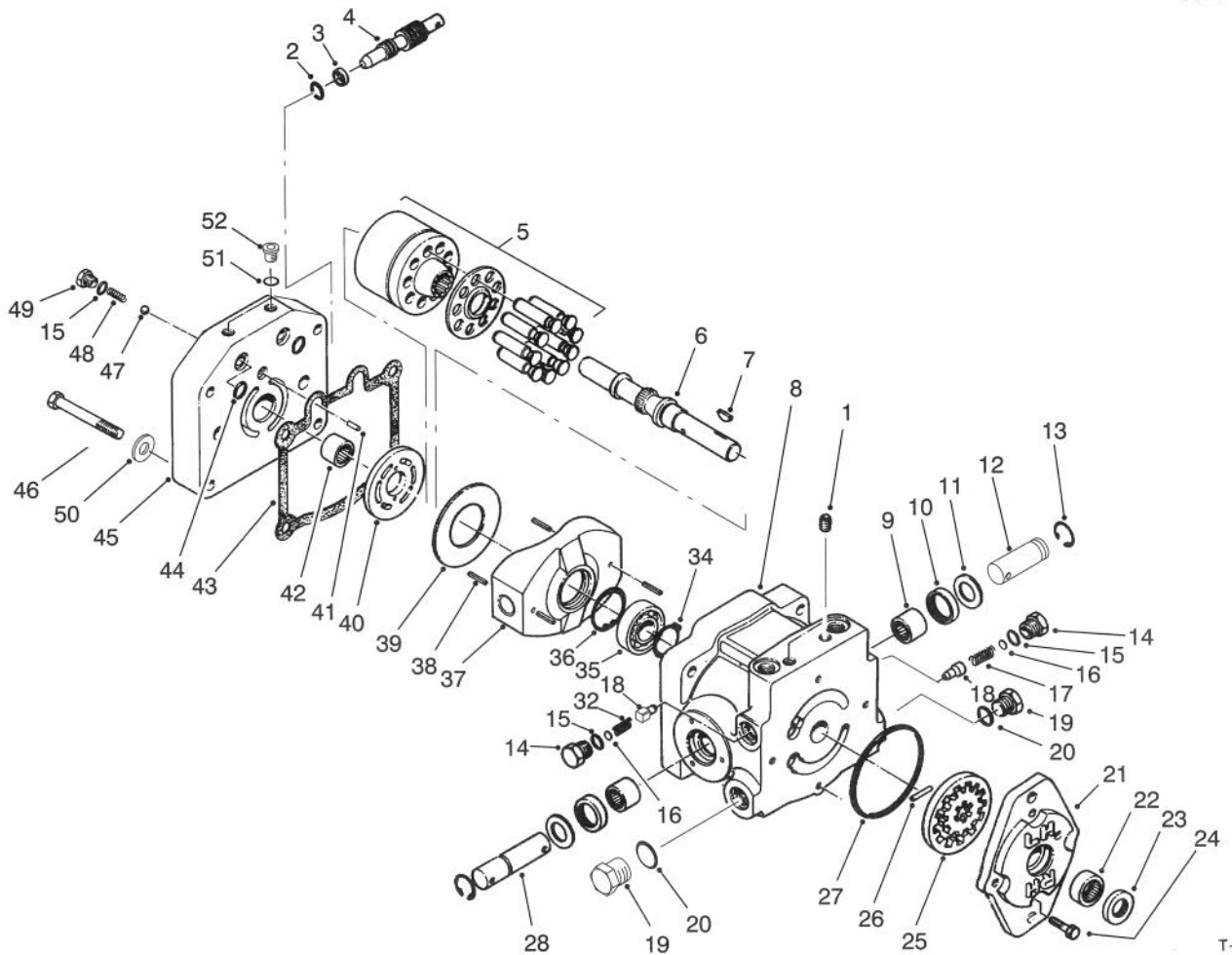
T-1809

HYDRAULIC PUMP ASSEMBLY NO. 92-9023

Ref. No.	Part No.	Description	No. Used
1	285-17	Plug - Pipe	2
2	237-22	O-Ring	1
3	25-2630	Ring	1
4	88-8220	Valve - By-Pass	1
5	48-1800	Cylinder Block Kit	1
6	67-8020	Shaft - Pump	1
7	3257-32	Key - Woodruff	1
8	92-9023	Hydraulic Pump Assembly (Complete)	1
9	252-82	Bearing - Needle	2
10	25-3210	Seal - Lip	2
11	25-2510	Washer	2
12	49-8480	Shaft - Trunion	1
13	32151-46	Ring - Retaining	2
14	25-2460	Plug	2
15	237-86	O-Ring	4
16	25-2470	Kit - Shim Pack	2
17	25-2570	Spring - Relief Valve	1
18	83-7260	Cone - Relief Valve	2
19	67-8030	Plug Assembly (Incl. Ref. #20)	2
20	67-8040	O-Ring	2
21	92-7940	Housing - Charge Pump	1
22	67-8050	Bearing - Needle	1
23	67-8060	Seal - Lip	1

Ref. No.	Part No.	Description	No. Used
24	322-4	Screw - Cap Hex. Hd.	4
25	25-2680	Gerotor Assembly	1
26	25-2530	Pin - Straight	1
27	237-95	O-Ring	1
28	28-3670	Shaft - Trunion	1
32	25-2480	Spring - Charge Relief	1
34	32120-15	Ring - Retaining	1
35	251-8	Bearing - Ball	1
36	32120-11	Ring - Retaining	1
37	25-2450	Swash/Plate	1
38	32121-91	Pin - Coiled Spring	3
39	25-2380	Plate - Thrust	1
40	25-2390	Plate - Valve	1
41	25-2430	Pin - Straight	1
42	46-8400	Bearing - Needle	1
43	25-2400	Gasket	1
44	62-4290	O-Ring	2
45		Cap - Pump End	1
46	323-11	Screw - Cap Hex. Hd.	4
47	25-2490	Ball - Check Valve	2
48	25-2640	Spring - Check Valve	2
49	25-2650	Plug - Check Valve	2
50	3256-24	Washer	1
51	92-8777	Seal - O-Ring	2

*Not Illustrated



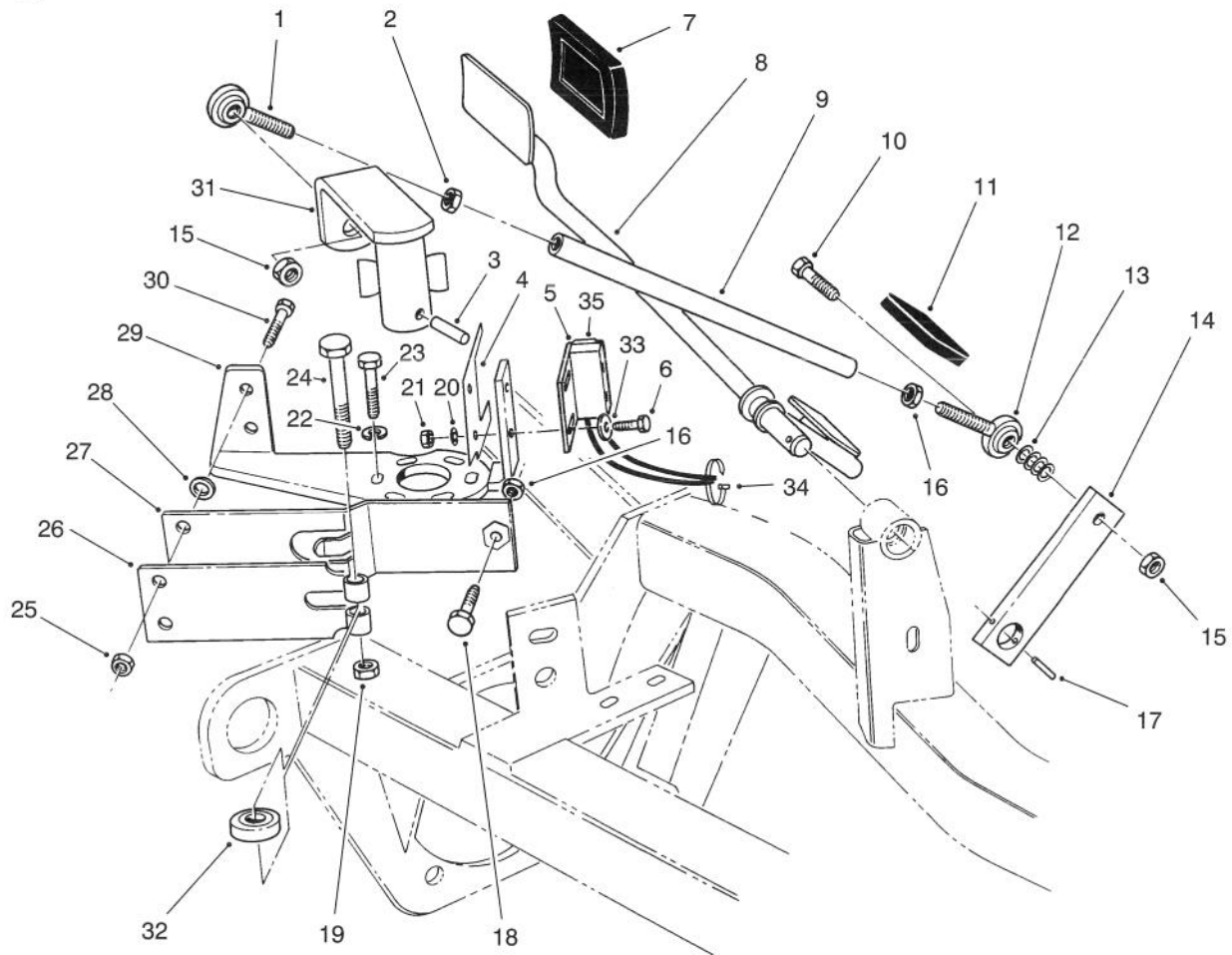
T-1809

HYDRAULIC PUMP ASSEMBLY NO. 92-9023 (Continued)

Ref. No.	Part No.	Description	No. Used
52	92-8776	Plug Assembly (Incl. Ref. #51)	2
*	49-8510	Kit - Charge Relief (Incl. Ref. #14-16, 18 & 32)	1

Ref. No.	Part No.	Description	No. Used
*	25-3180	Kit - Check Valve (Incl. Ref. #15, 47-49)	1
*	49-8520	Kit - Implement Relief (Incl. Ref. #14-18)	1

*Not Illustrated

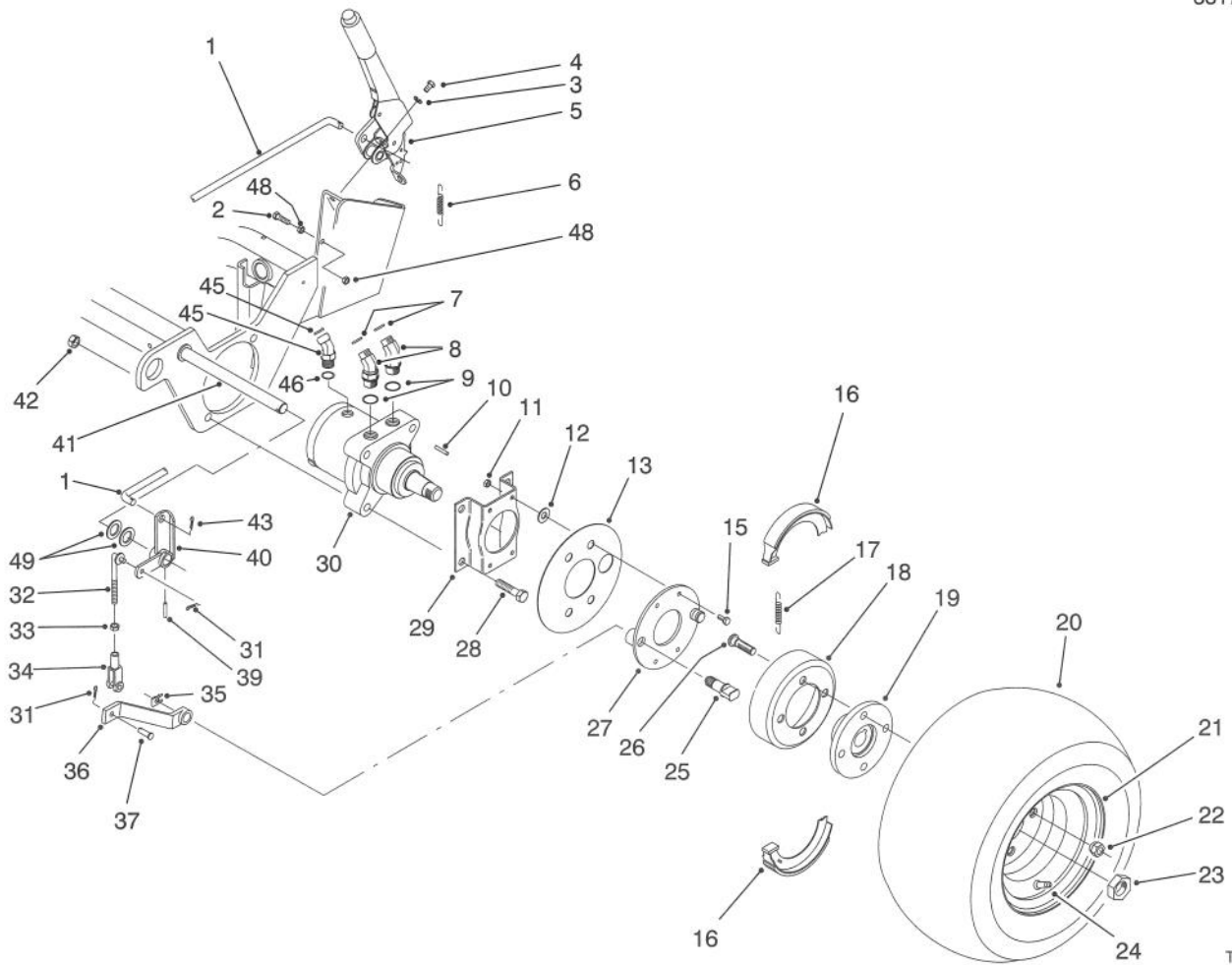


T-1069A

TRACTION CONTROLS ASSEMBLY

Ref. No.	Part No.	Description	No. Used
1	2411-53	Bearing - Rod End L.H.	1
2	3220-20	Nut - Jam L.H.	1
3	32121-24	Pin - Roll	1
4	46-8810	Stop - Spring	1
5	94-1754	Neutral Switch Assembly (Incl. Ref. #35)	1
6	3249-3	Screw - Rd. Hd. Machine	2
7	74-9100	Pad - Pedal Forward	1
8	76-2170	Pedal - Traction	1
9	76-0420	Rod - Pump Control	1
10	322-7	Capscrew - Hex. Nd.	2
11	74-9110	Pad - Pedal Reverse	1
12	2411-52	Bear - Rod End R.H.	1
13	3256-74	Washer - Flat	8
14	61-2610	Arm - Traction	1
15	32153-3	Nut - Lock	2
16	3220-2	Nut - Jam R.H.	1
17	32121-6	Pin - Roll	1

Ref. No.	Part No.	Description	No. Used
18	3210-7	Capscrew - Hex. Hd.	1
19	3296-29	Nut - Lock	1
20	3254-9	Washer - Lock	2
21	3217-29	Nut - Lock	2
22	3255-7	Washer - Lock	3
23	42-2040	Screw - Hex. Hd. Self Tap	3
24	322-17	Capscrew - Hex. Hd.	1
25	3296-16	Nut - Lock	2
26	29-6150	Spring - Leaf	1
27	29-6170	Spring - Extended Leaf	1
28	51-3150	Shim - Spring Arm	1
29	29-6120	Plate - Pump	1
30	321-6	Screw - Cap Hex. Hd.	2
31	61-2940	Lever - Pump	1
32	251-259	Bearing - Ball	1
33	3256-53	Washer - Flat	2
34	3290-378	Tie - Cable	1
35	94-1755	Switch - Neutral	1



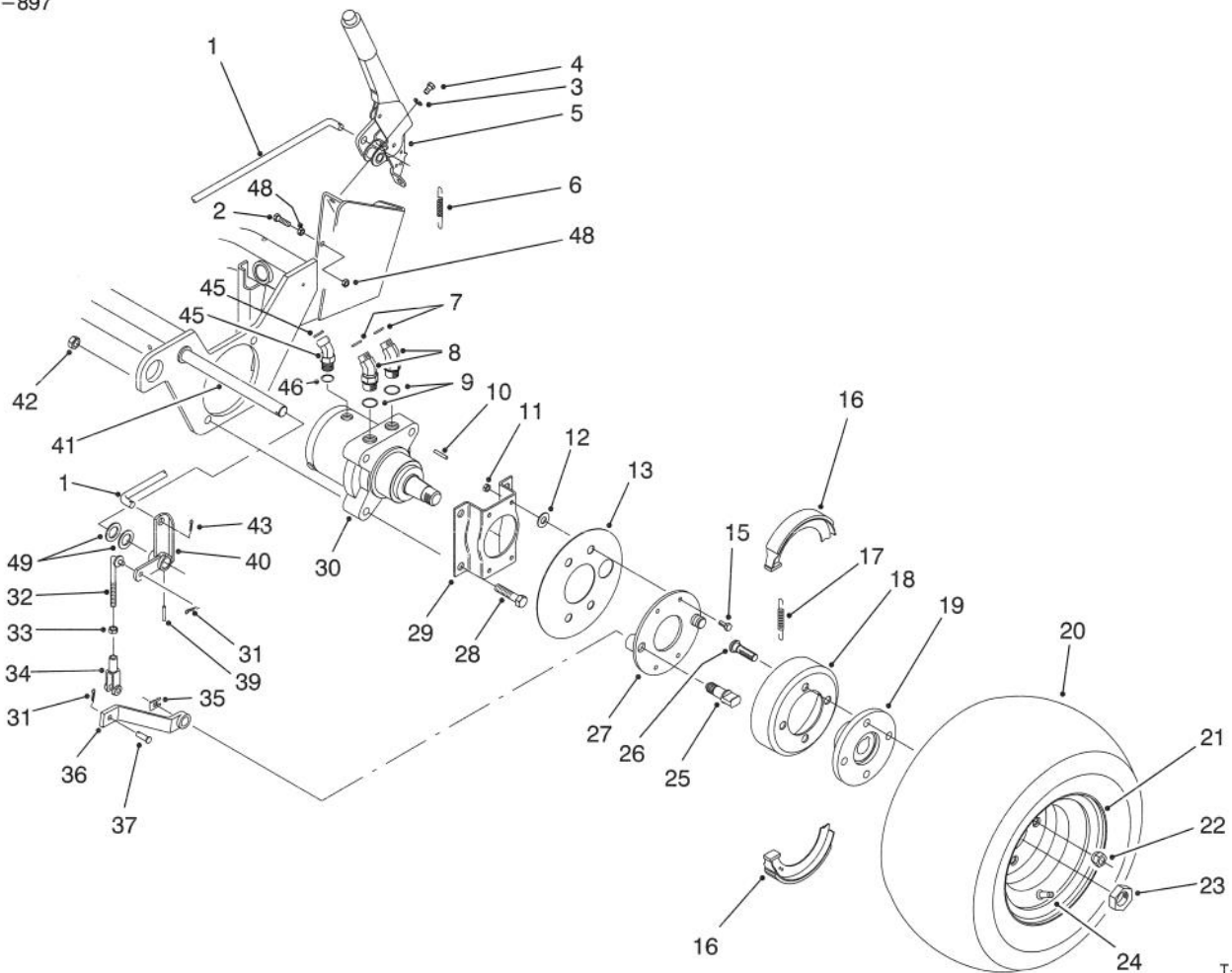
T-1416

FRONT WHEEL ASSEMBLY

Ref. No.	Part No.	Description	No. Used
1	83-9350	Rod - Parking Brake	1
2	322-17	Screw - Cap Hex. Hd.	1
3	3253-4	Washer - Lock	2
4	322-4	Screw - Hex. Washer Hd.	2
5	61-3990	Parking Brake Assembly	1
6	5-7290	Spring - Extension	1
7	237-30	Seal - O-Ring	4
8	340-89	Fitting - Hydraulic 45° (Incl. Ref. 7 & 9)	4
9	237-80	Seal - O-Ring	4
10	65-4640	Key - Square	2
11	3296-42	Nut - Lock	8
12	3256-16	Washer - Flat	8
13	83-9340	Shield - Grass	2
15	321-5	Screw - Cap Hex. Hd.	8
16	70-9840	Shoe - Brake	4
17	70-9880	Spring - Extension	4
18	10-6821	Brake Drum Assembly (Incl. Ref. #19 & 26)	2
19	10-6870	Hub - Wheel	2
20	231-127	Tire	2
21	217-60	Rim	2
22	242-50	Nut - Lug	8

Ref. No.	Part No.	Description	No. Used
23	26-3790	Nut - Lock	2
24	232-27	Valve - Stem	2
25	70-9860	Pin - Pivot Brake	2
26	85-6540	Stud - Drive	8
27	70-9870	Plate - Brake	2
28	325-11	Screw - Cap Hex. Hd.	8
29	84-2000	Bracket - Brake	2
30	66-5291	Hydraulic Motor Assembly (Incl. Ref. #10)	2
31	3272-6	Pin - Cotter	4
32	84-1990	Rod - Adjusting	2
33	3220-2	Nut - Jam	2
34	282-2	Clevis	2
35	70-9850	Clip - Retaining	2
36	83-9250	Lever - Brake	2
37	283-1	Pin - Clevis	2
39	32121-79	Pin - Roll	2
40	83-9270	Pivot - Brake L.H.	1
*	83-9310	Pivot - Brake R.H.	1
41	83-9330	Shaft - Brake	1
42	3296-23	Nut - Lock	8
43	3272-7	Pin - Cotter	1

*Not Illustrated



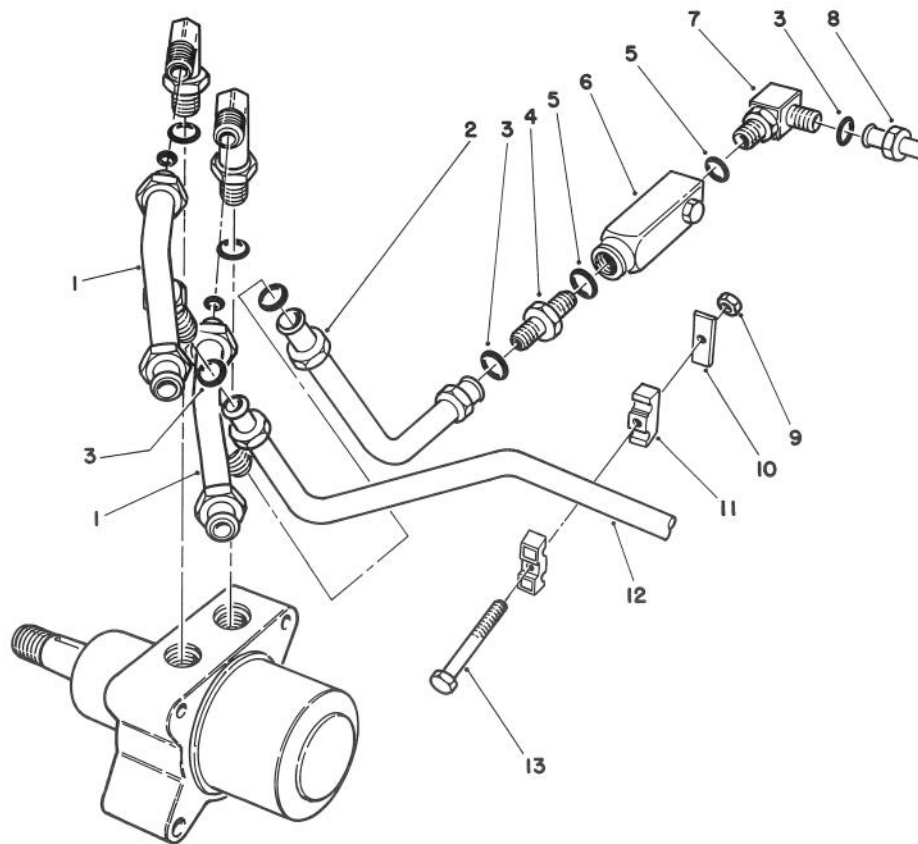
T-1416

FRONT WHEEL ASSEMBLY (Continued)

Ref. No.	Part No.	Description	No. Used
45	340-103	Fitting - Hydraulic 45° (Incl. Ref. #46 & 47) (For Left Wheel Motor)	1
*	340-140	Fitting - Hydraulic Tee (Incl. Ref. #46 & 47) (For Right Wheel Motor)	1

Ref. No.	Part No.	Description	No. Used
46	237-78	Seal - O-Ring	2
47	237-21	Seal - O-Ring	3
48	32128-20	Nut - Lock	2
*	71-1500	Brake Assembly (Incl. Ref. #16, 17, 25, 27 & 35)	2

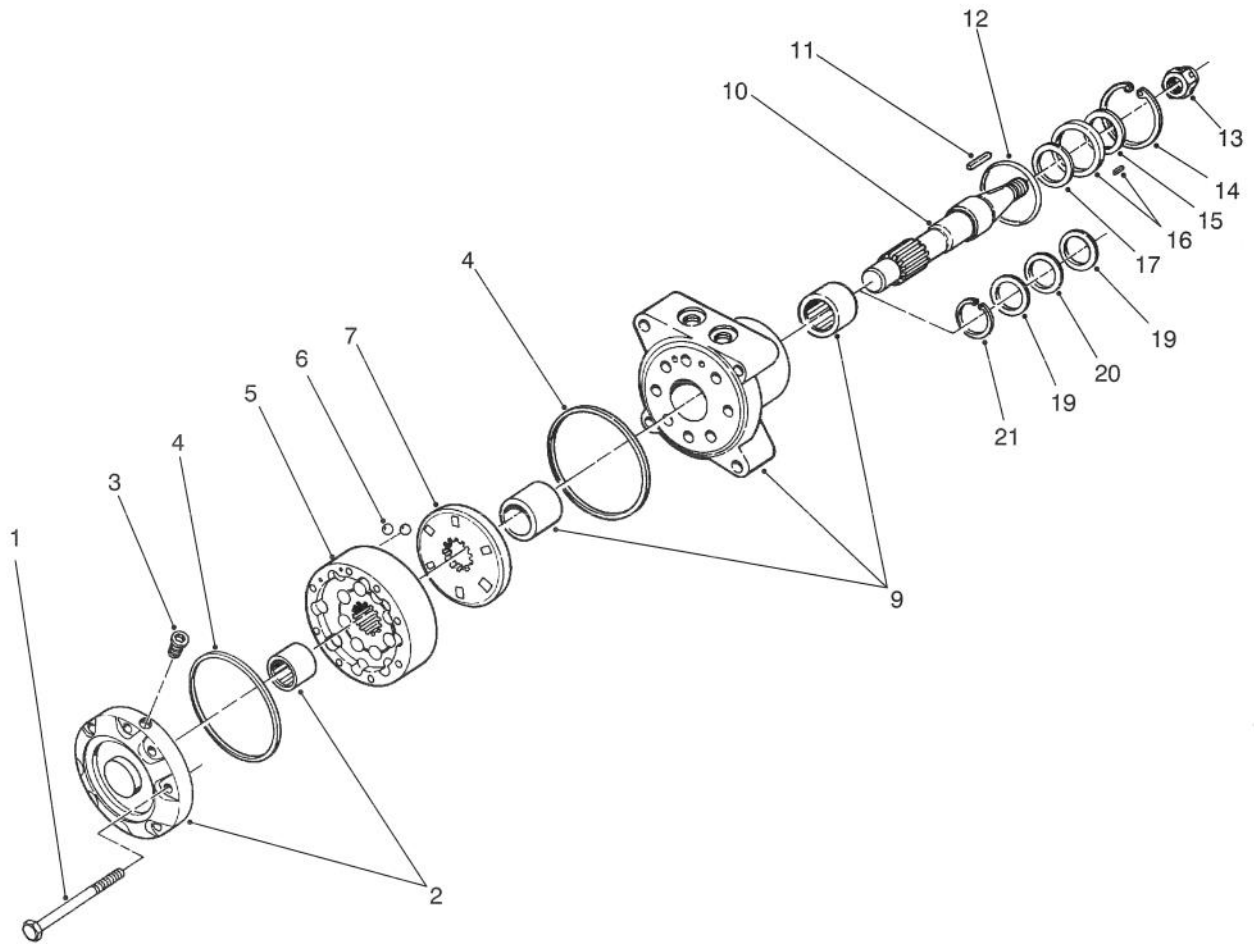
*Not Illustrated



T-0889

RIGHT FRONT WHEEL PLUMBING ASSEMBLY

Ref. No.	Part No.	Description	No. Used	Ref. No.	Part No.	Description	No. Used
1	71-0870	Tee - Tube Assembly (Incl. Ref. #3)	2	7	340-99	Fitting (Incl. Ref. #3 & 5)	1
2	71-0880	Tube Assembly	1	8	71-0850	Tube Assembly	1
3	237-30	O-Ring	4	9	32128-14	Flange Locknut	1
4	340-5	Fitting (Incl. Ref. #3 & 5)	1	10	69-9760	Cover - Plate	1
5	237-42	O-Ring	2	11	56-7976	Clamp - Tube	2
6	71-2960	Valve - Flow Control	1	12	71-0910	Tube Assembly	1
				13	321-28	Screw - Cap Hex Hd.	1



T-0274

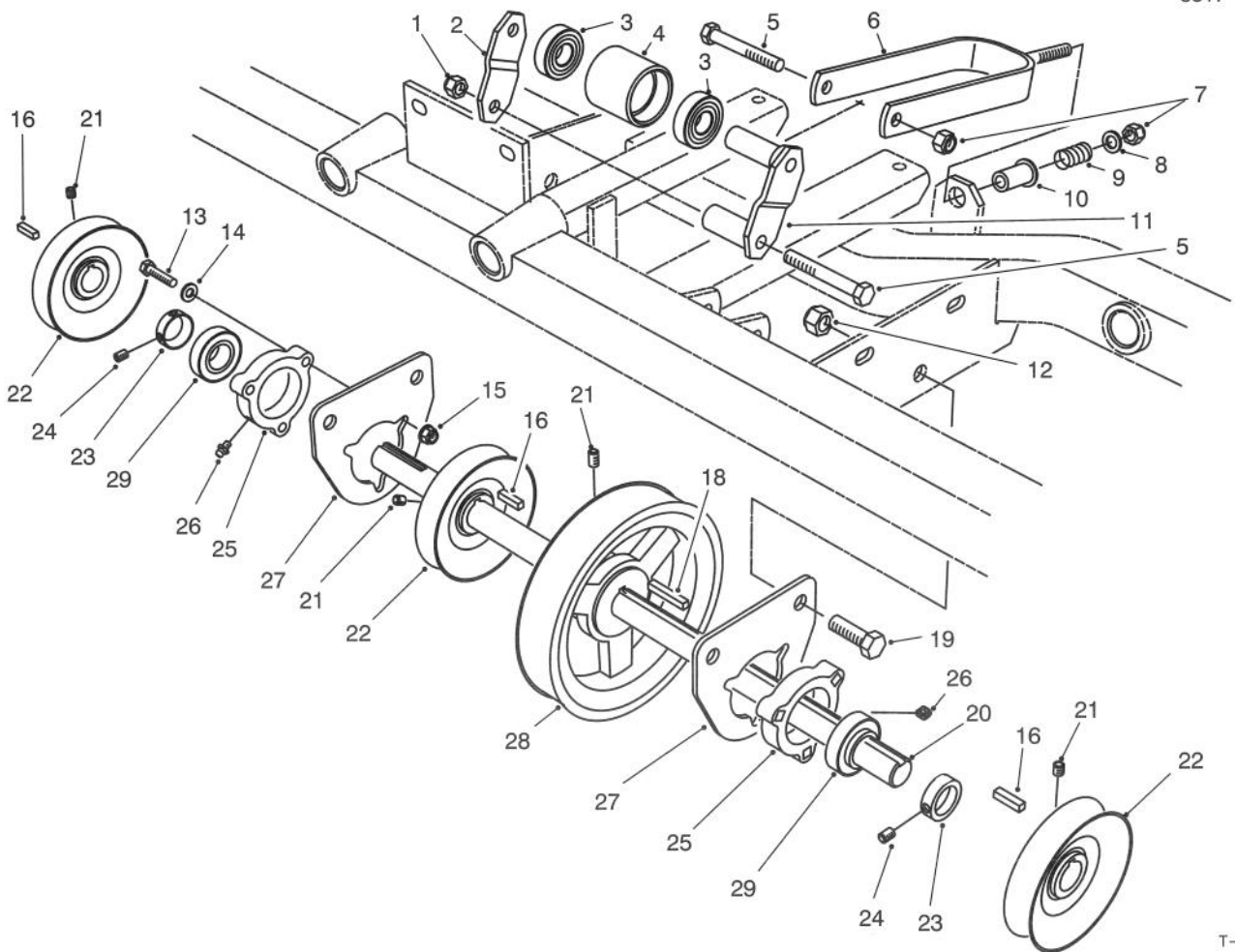
HYDRAULIC DRIVE MOTOR ASSEMBLY NO. 66-5291

Ref. No.	Part No.	Description	No. Used
1	65-4580	Screw - Cap Hex Hd.	8
2	65-4680	Cover & Bearing Assembly	1
3	65-4560	Plug - Hex (Hollow)	1
4	65-4570	Seal - Square Ring	2
5	66-6110	iGR Assembly	1
6	65-4550	Valve - Check Ball	2
7	70-8150	Plate - Valve	1
9	65-4670	Body & Bearing Assembly	1
10	92-1157	Shaft	1
11	3257-15	Key - Square	1
12	65-4620	Seal - O-Ring	1

Ref. No.	Part No.	Description	No. Used
14	65-4500	Seal - Snap Ring	1
†15		Seal - Dust	1
†16		Retainer/Pin	1
†17		Seal - Lip	1
*	76-2350	Seal/Retainer Assembly (Incl. Ref. #15-17)	1
19	65-4600	Washer - Thrust	2
20	65-4610	Bearing - Thrust	1
21	65-4590	Ring - Snap	1
*	76-2360	Body Seal Kit (Incl. Ref. #4,12 & 15-17)	1

*Not Illustrated

†Not available from Toro as a replacement part.



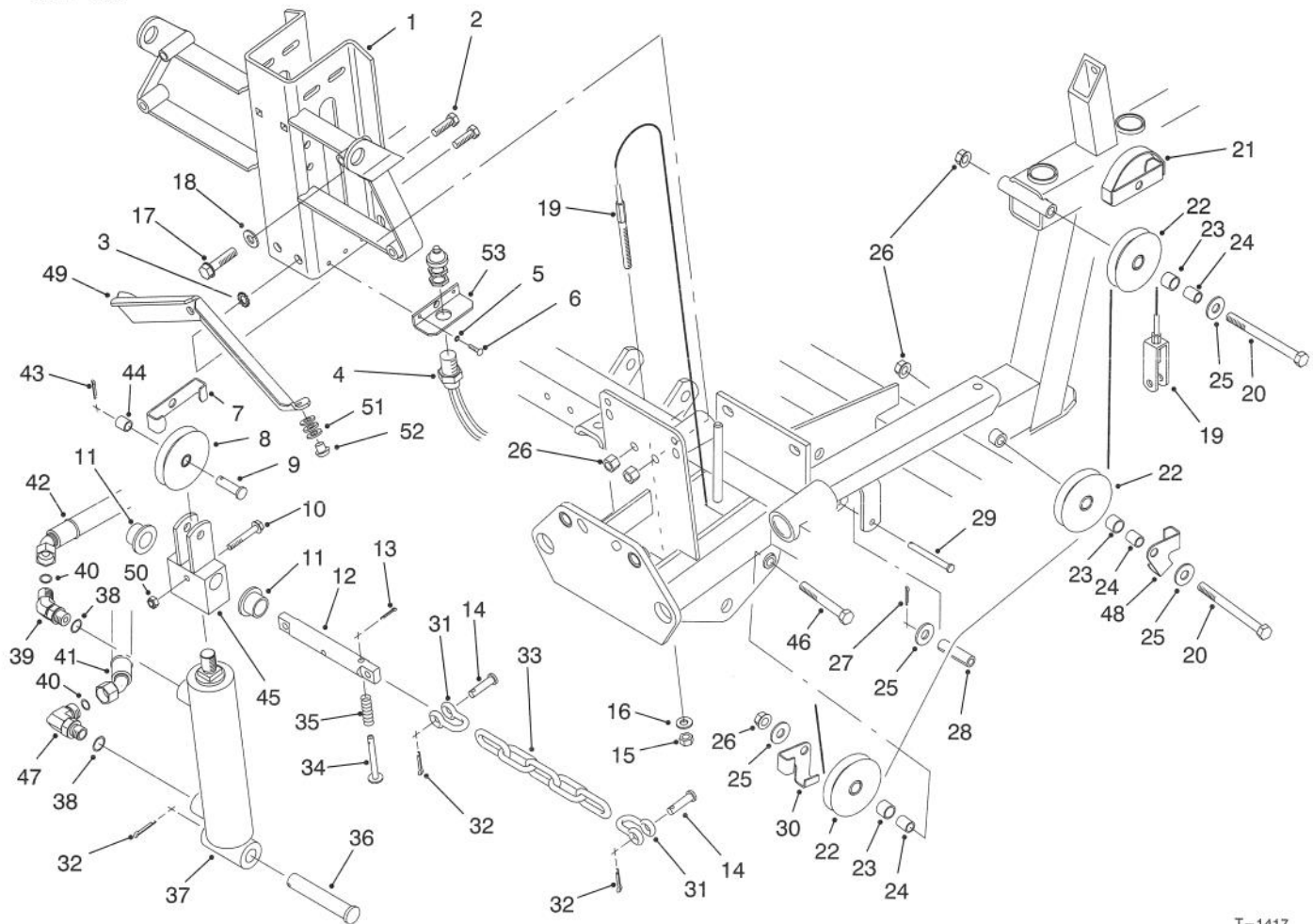
T-0276

JACKSHAFT ASSEMBLY

Ref. No.	Part No.	Description	No. Used
1	3296-39	Nut - Lock	2
2	67-7911	Strap - Idler Bracket	1
3	38-7820	Bearing - Idler	2
4	67-7750	Pulley - Idler	1
5	323-15	Screw - Cap Hex. Hd.	2
6	67-7890	Belt Tensioner W.A.	1
7	3296-59	Nut - Lock	1
8	3256-24	Washer - Flat	1
9	83-9690	Spring - Compression	1
10	83-9810	Bushing - Flange	1
11	67-7870	Idler Bracket W.A.	1
12	3296-23	Nut - Lock	4
13	322-17	Screw - Cap Hex. Hd.	6
14	3256-23	Washer - Flat	6
15	32128-25	Nut - Flange Lock	6
16	5-7280	Key - Square (Short)	3

Ref. No.	Part No.	Description	No. Used
18	67-7490	Key - Square (Long)	1
19	325-4	Screw - Cap Hex. Hd.	4
20	83-7820	Shaft - Drive	1
21	3242-4	Screw - Set	8
22	61-0140	Pulley - Jackshaft	3
23	251-77	Collar - Locking (Incl. Ref. #24)	2
24	3245-35	Screw - Set	2
25	76-2460	Bearing Assembly (Incl. Ref. #23, 26 & 29)	2
26	302-5	Fitting - Grease	2
27	61-2350	Mount - Bearing	2
28	61-0070	Pulley - Poly V	1
29	94-3405	Bearing	2
*	13-1279	Idler Pulley Assembly (Incl. Ref. #3, 4 & 11)	1

*Not Illustrated

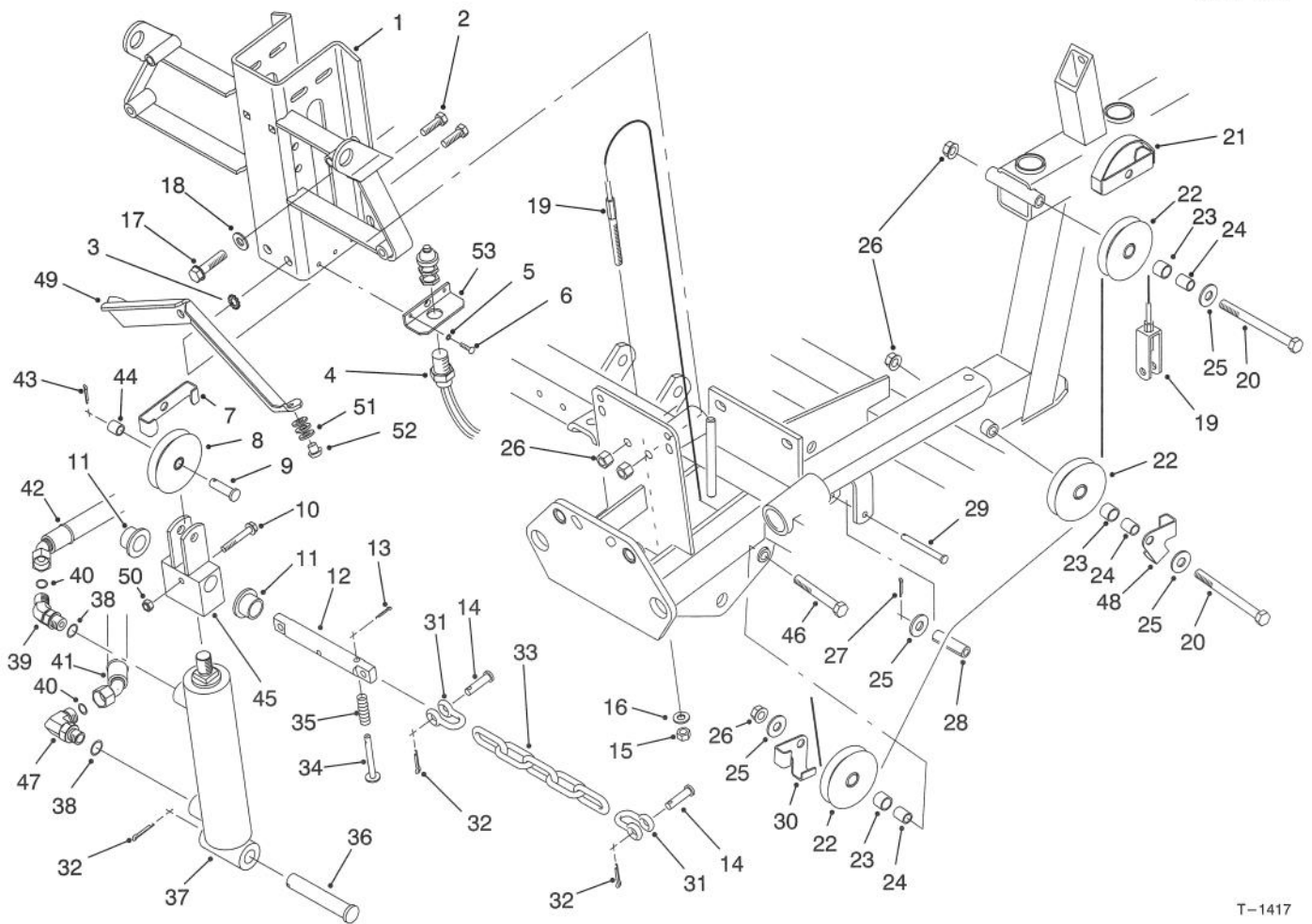


T-1417

CUTTING UNIT LIFT ASSEMBLY

Ref. No.	Part No.	Description	No. Used
1	92-1840	Bracket - Cylinder & Cooler	1
2	323-6	Screw - Cap Hex. Hd.	2
3	3255-9	Washer - Lock	2
4	94-3429	Lift Switch Assembly	1
5	3254-9	Washer - Lock Internal	2
6	3249-5	Screw - Round Hd.	2
7	5-2655	Keeper - Cable	1
8	5-2653	Cable Pulley Assembly (Incl. Ref. #44)	1
9	283-42	Pin - Clevis	1
10	321-9	Screw - Hex. Washer Hd.	1
11	84-8440	Bushing - Flange	2
12	94-1776	Pin - Cylinder Guide	1
13	3272-4	Pin - Cotter	1
14	283-6	Pin - Clevis	4
15	3296-4	Nut - Lock	1
16	3256-23	Washer - Flat	1
17	11-0590	Screw - Thread Forming	4
18	3256-24	Washer - Flat	4
19	61-3260	Cable - Lift	1
20	323-23	Screw - Cap Hex. Hd.	2
21	61-3240	Keeper - Cable	1
22	61-3210	Cable Pulley Assembly (Incl. Ref. #23)	3
23	256-1	Bushing - Sleeve	3
24	61-3230	Spacer	3

Ref. No.	Part No.	Description	No. Used
25	3256-4	Washer - Flat	4
26	3296-39	Nut - Lock	5
27	3272-4	Pin - Cotter	1
28	32121-124	Pin - Roll	1
29	283-79	Pin - Clevis	1
30	5-2656	Keeper - Cable	1
31	282-4	Clevis	4
32	3272-11	Pin - Cotter	5
33	61-3830	Chain - Lift	2
34	71-1380	Pin - Spring	1
35	71-1370	Spring - Compression	1
36	283-78	Pin - Clevis	1
37	76-0020	Hydraulic Cylinder Assembly	1
38	237-42	Seal - O-Ring	2
39	340-87	Fitting - Hydraulic 45° (Incl. Ref. #38 & 40)	1
40	237-22	Seal - O-Ring	2
41	61-2500	Hose - Hydraulic	1
42	61-2490	Hose - Hydraulic	1
43	3272-6	Pin - Cotter	1
44	256-2	Bushing - Sleeve	1
45	61-2430	Hub - Lift	1
46	323-13	Screw - Cap Hex. Hd.	1
47	340-77	Fitting - Hydraulic 90° (Incl. Ref. #38 & 40)	1
48	83-9130	Keeper - Cable	1

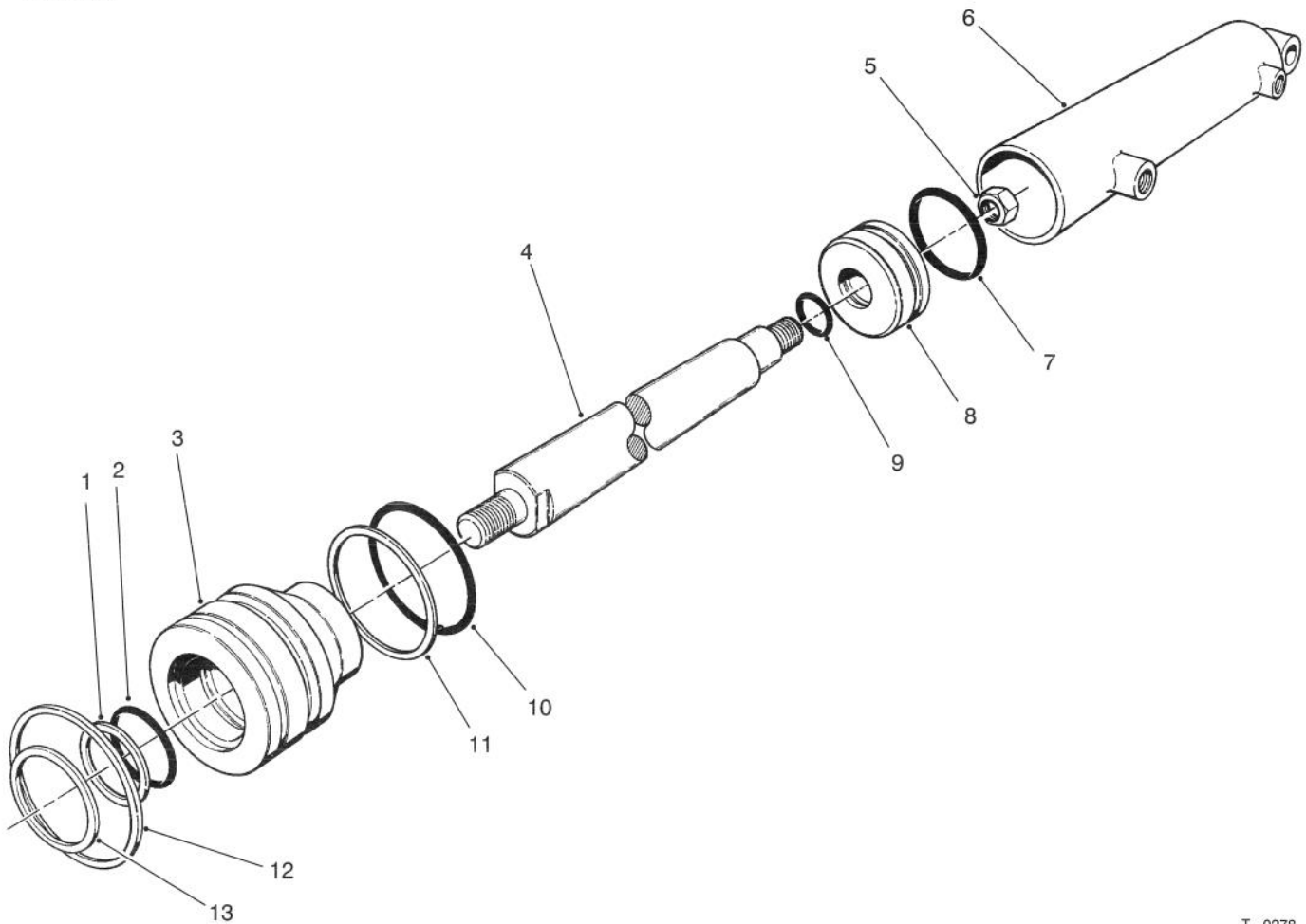


T-1417

CUTTING UNIT LIFT ASSEMBLY (Continued)

Ref. No.	Part No.	Description	No. Used
49	94-1750	Stop	1
50	3296-56	Nut - Lock	1
51	3256-23	Washer	6

Ref. No.	Part No.	Description	No. Used
52	237-37	Bumper	2
53	94-3424	Bracket - Switch	1



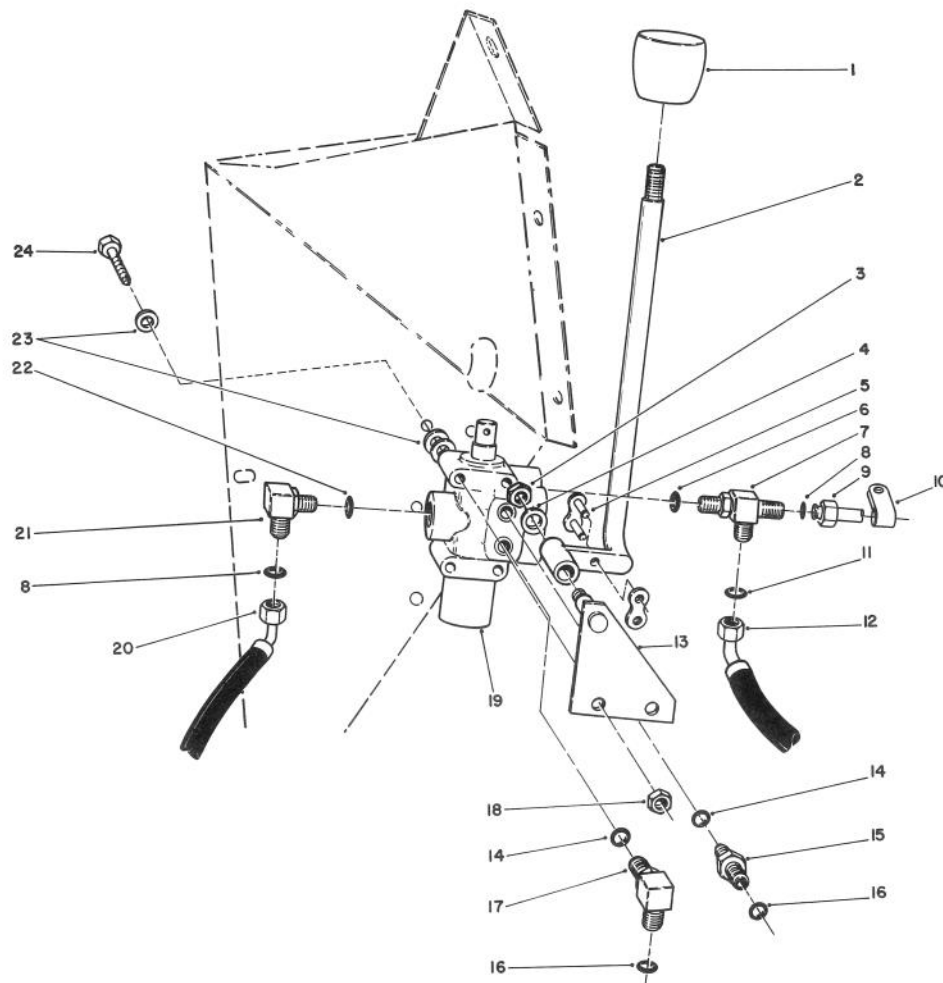
T-0278

HYDRAULIC CYLINDER ASSEMBLY NO. 76-0020

Ref. No.	Part No.	Description	No. Used
1		Washer - Backup	1
2		O-Ring	1
3	76-0090	Head	1
4	76-2320	Shaft	1
5	76-2330	Nut - Lock	1
6		Barrel	1
7		Uniring	1
8	76-0040	Piston	1

Ref. No.	Part No.	Description	No. Used
9		O-Ring	1
10		O-Ring	1
11		Washer - Backup	1
12	76-0050	Ring - Retaining	1
13		Seal-Dust	1
*	76-0030	Repair Kit (Incl. Ref. #1-2, 7, 9-11 &13)	1

*Not Illustrated

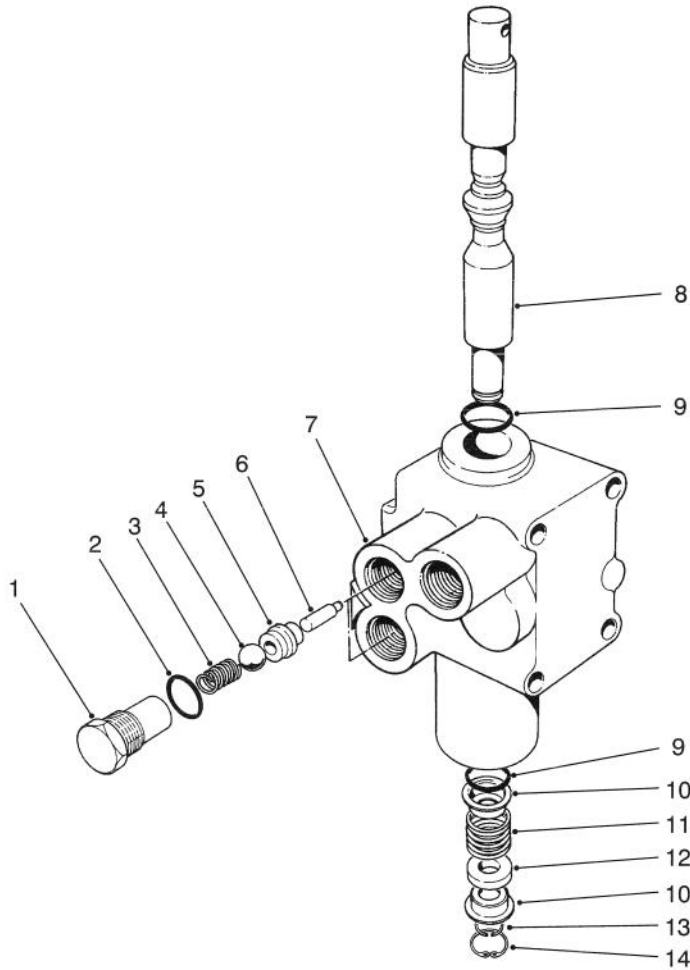


T-0890

CUTTING UNIT LIFT CONTROL VALVE ASSEMBLY

Ref. No.	Part No.	Description	No. Used
1	233-37	Knob	1
2	85-5160	Lever - Valve	1
3	3296-39	Nut Lock	1
4	3256-24	Washer	1
5	2710-16	Link - Chain	1
6	237-42	O-Ring	1
7	71-0770	Fitting (Incl. Ref. #6, 8 & 11)	
8	237-22	O-Ring	2
9	71-0860	Tube Assembly	1
10	2412-113	Clamp-R	1
11	237-30	O-Ring	1
12	61-2520	Hydraulic Hose Assy. (Up)	1
13	61-2720	Bracket - Lever	1

Ref. No.	Part No.	Description	No. Used
14	237-78	O-Ring	2
15	340-88	Fitting - Straight (Incl. Ref. #14 & 16)	1
16	237-21	O-Ring	2
17	340-97	Fitting - 90° Elbow (Incl. Ref. #14 & 16)	1
18	3296-16	Nut - Lock	3
19	43-1950	Valve - Hydraulic	1
20	61-2510	Hydraulic Hose Assy. (Low)	1
21	340-99	Fitting - 90° Elbow (Incl. Ref. #8 & 22)	1
22	237-79	O-Ring	1
23	3256-22	Washer - Flat	9
24	321-23	Screw - Cap Hex.Hd.	3

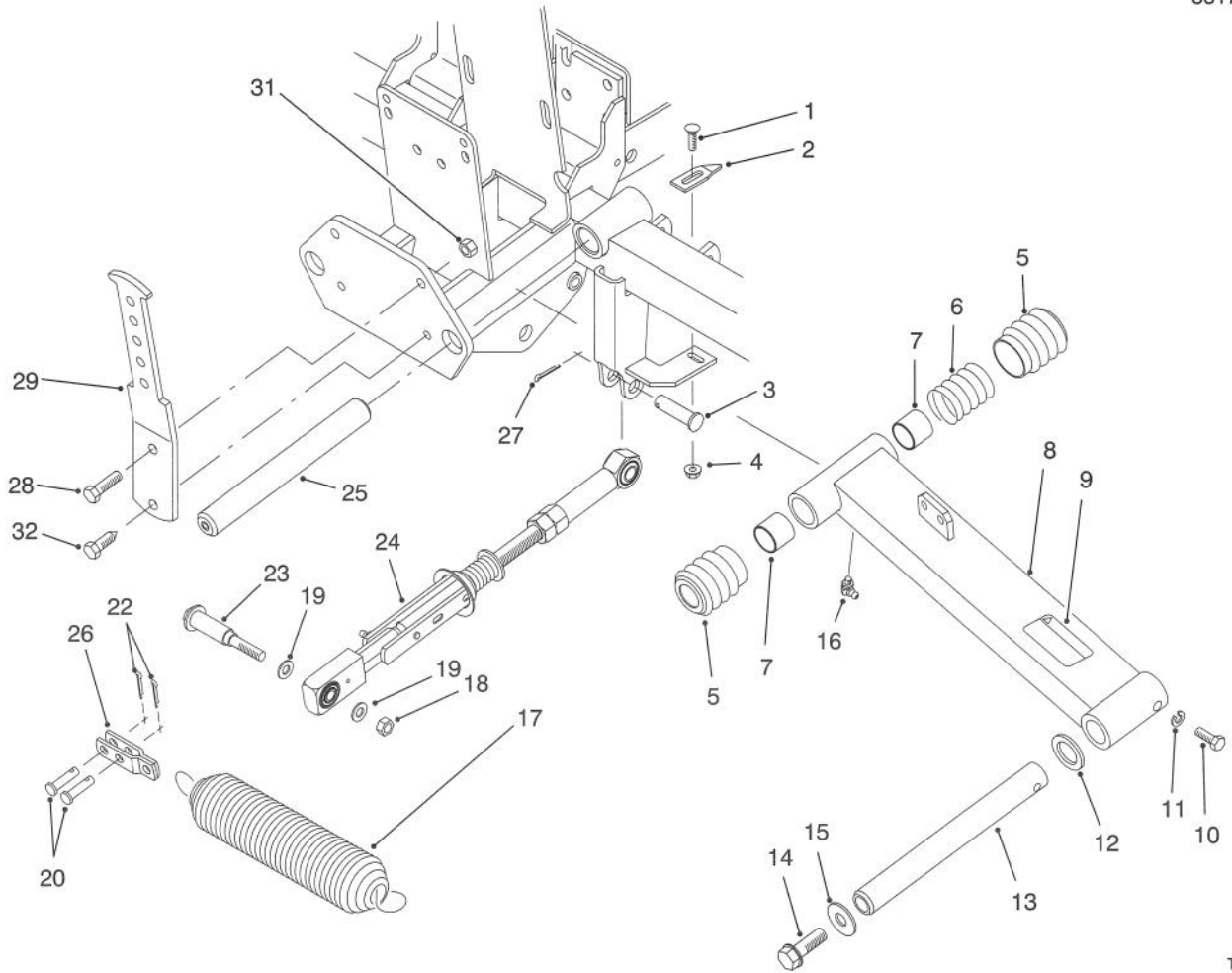


T-0280

CONTROL VALVE ASSEMBLY NO. 43-1950

Ref. No.	Part No.	Description	No. Used
1	22-8330	Plug	2
2	237-42	O-Ring	2
3	22-8340	Spring	2
4	22-8350	Ball	2
5	22-8370	Seat - Check Valve	2
6	22-8360	Pin - Cam	2
7		Body	1

Ref. No.	Part No.	Description	No. Used
8	22-8420	Spool	1
9	22-8500	O-Ring	2
10	22-8380	Retainer - Spring	2
11	22-8410	Spring	1
12	23-3030	Spacer	1
13	22-8480	Snap Ring - Spool	1
14	22-8490	Snap Ring	1



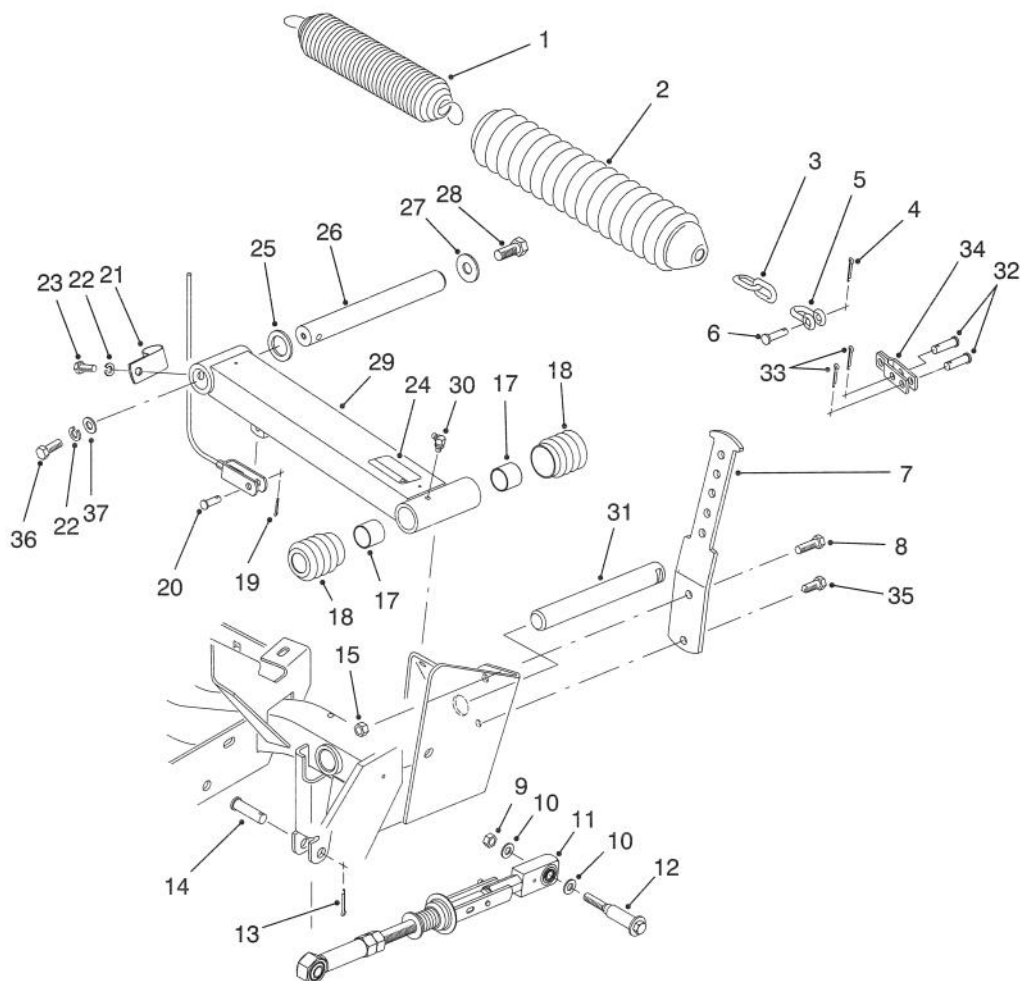
T-1419

FRONT CUTTING UNIT LIFT ARM ASSEMBLY

Ref. No.	Part No.	Description	No. Used
1	3229-1	Bolt - Carriage	2
2	76-2430	Scraper - Pulley	2
3	283-40	Pin - Clevis	2
4	32128-33	Nut - Flange Lock	2
5	61-7250	Boot	4
6	61-3270	Spring - Compression	2
7	3-0348	Bushing - Sleeve	4
8	16-1159	Lift Arm Assembly L.H. (Incl. Ref. #7, 9 & 16)	1
*	16-1169	Lift Arm Assembly R.H. (Incl. Ref. #7, 9 & 16)	1
9	55-4300	Decal - Warning	2
10	322-4	Screw - Cap Hex. Hd.	2
11	3253-4	Washer - Lock	2
12	256-115	Washer - Thrust	2
13	92-1815	Rod - Pivot	2
14	3234-32	Screw - Hex. Flange Hd.	2

Ref. No.	Part No.	Description	No. Used
15	3256-6	Washer - Flat	2
16	302-60	Fitting - Grease	2
17	5-0743	Spring - Extension	2
18	3296-59	Nut - Lock	2
19	3256-45	Washer - Flat	4
20	283-75	Pin - Clevis	4
22	3272-10	Pin - Cotter	4
23	76-0370	Bolt - Shoulder	2
24	83-7900	Belt Tensioner Assembly	2
25	92-1812	Shaft - Lift Pivot	2
26	93-6912	Shackle	2
27	3272-13	Pin - Cotter	2
28	323-7	Screw - Cap Hex. Hd.	2
29	92-1818	Arm - Tension	2
31	3296-39	Nut - Lock	2
32	32104-6	Screw - Cap Hex. Hd.	2

*Not Illustrated

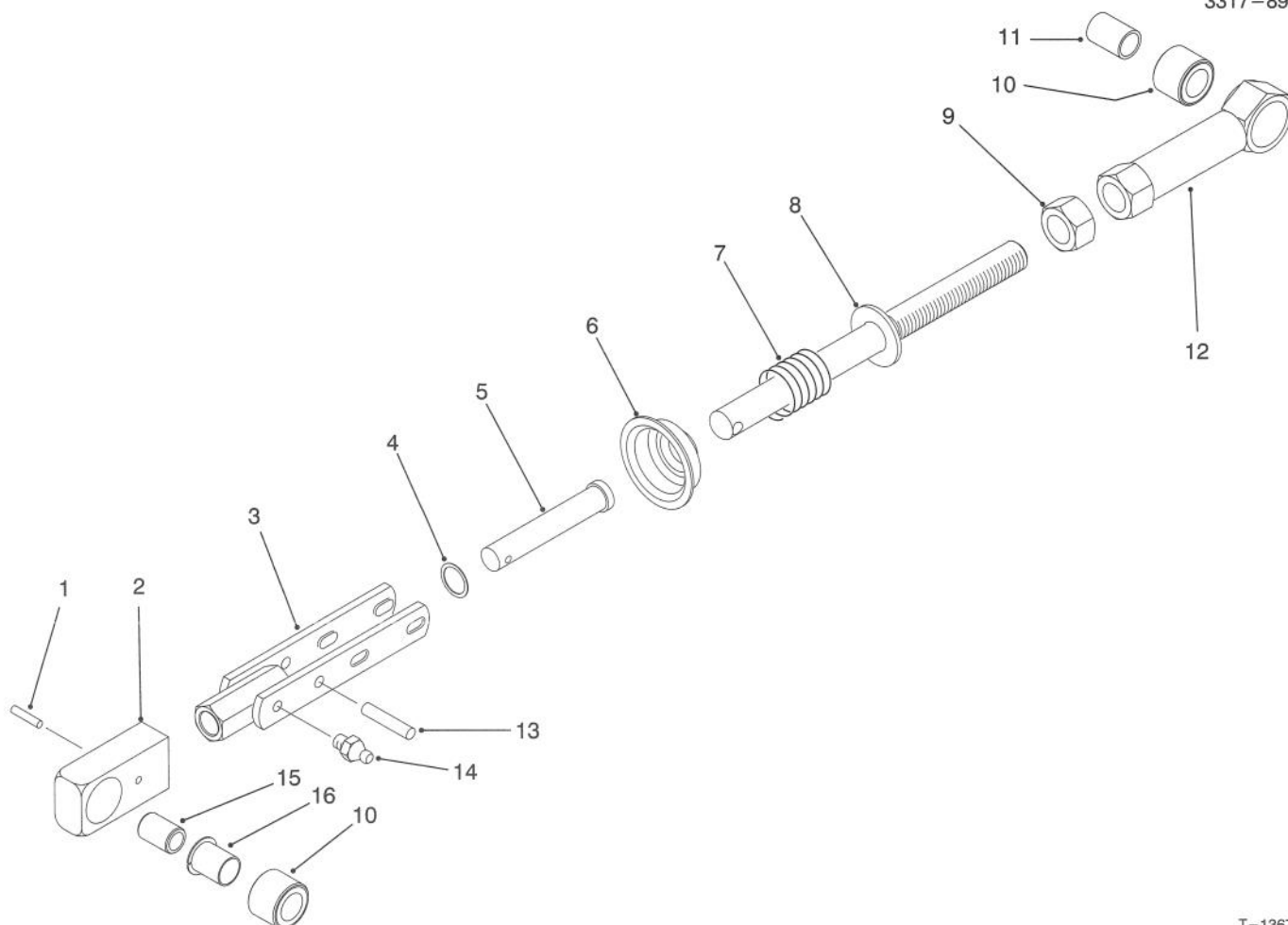


T-1366A

REAR CUTTING UNIT LIFT ARM ASSEMBLY

Ref. No.	Part No.	Description	No. Used
1	5-0743	Spring - Extension	1
2	62-7240	Cover - Spring	1
3	62-7300	Chain	1
4	3272-11	Pin - Cotter	1
5	282-4	Clevis	1
6	283-6	Pin - Clevis	1
7	92-1818	Arm - Tension	1
8	323-7	Screw - Cap Hex. Hd.	1
9	3296-59	Nut - Lock	2
10	3256-45	Washer - Flat	4
11	83-7900	Belt Tensioner Assembly	2
12	76-0370	Bolt - Shoulder	2
13	3272-13	Pin - Cotter	2
14	283-40	Pin - Clevis	2
15	3296-39	Nut - Lock	1
17	3-0348	Bushing - Sleeve	2
18	62-7250	Boot	2
19	3272-6	Pin - Cotter	1
20	283-1	Pin - Clevis	1

Ref. No.	Part No.	Description	No. Used
21	18-2970	Clamp - R	1
22	3253-4	Washer - Lock	2
23	322-4	Screw - Cap Hex. Hd.	1
24	55-4300	Decal - Warning	1
25	256-115	Washer - Thrust	1
26	92-1815	Rod - Pivot	1
27	3256-6	Washer - Flat	1
28	3234-32	Screw - Cap Hex. Hd.	1
29	16-1089	Lift Arm Assembly (Incl. Ref. #17, 24 & 30)	1
30	302-60	Fitting - Grease	1
31	92-1812	Shaft - Lift Pivot	1
32	283-75	Pin - Clevis	2
33	3272-10	Pin - Cotter	2
34	93-6912	Shackle	1
35	32104-6	Screw - Cap Hex. Hd.	1
36	322-26	Screw - Cap Hex. Hd.	1
38	3256-57	Washer - Flat	1



T-1367

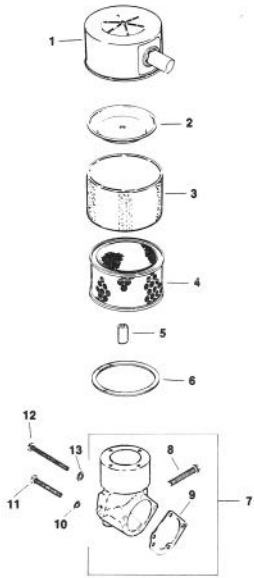
BELT TENSIONER ASSEMBLY NO. 83-7900

Ref. No.	Part No.	Description	No. Used
1	32121-23	Pin - Roll	1
2	76-0350	Housing - Bushing	1
3	83-7930	Yoke	1
4	3256-54	Washer - Flat	1
5	283-55	Pin - Clevis	1
6	76-0360	Cup - Retainer	1
7	76-0410	Spring - Compression	1
8	83-7910	Rod	1

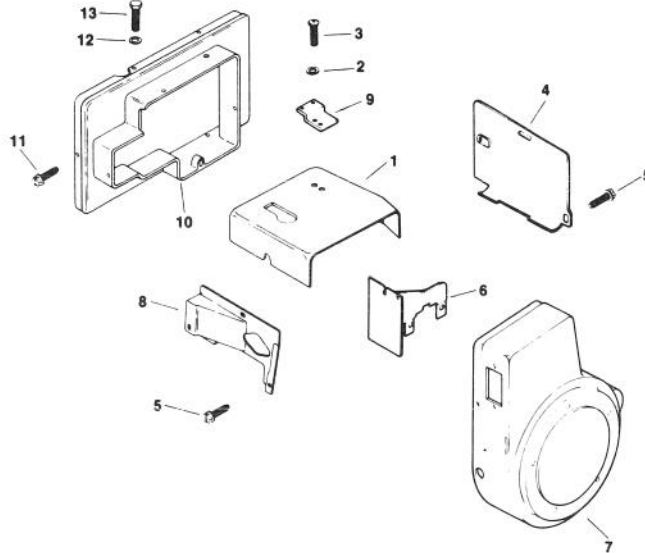
Ref. No.	Part No.	Description	No. Used
9	3218-6	Nut - Jam	1
10	56-9510	Bushing Assembly	2
11	256-173	Bushing - Sleeve	1
12	76-0300	Housing - Bushing	1
13	32121-9	Pin - Roll	1
14	302-5	Fitting - Grease	1
15	76-0390	Spacer	1
16	56-9520	Bushing - Nyliner	1

ENGINE KOHLER MODEL NO. M16QS SPEC NO. 711563

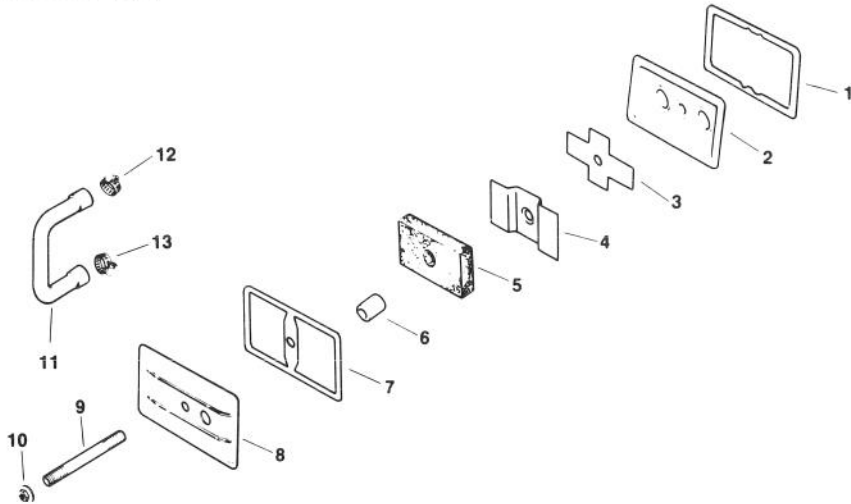
Air Intake



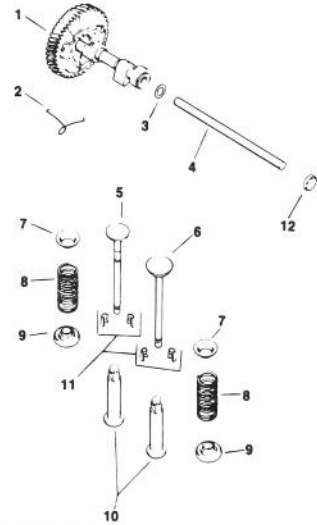
Baffles & Shroud



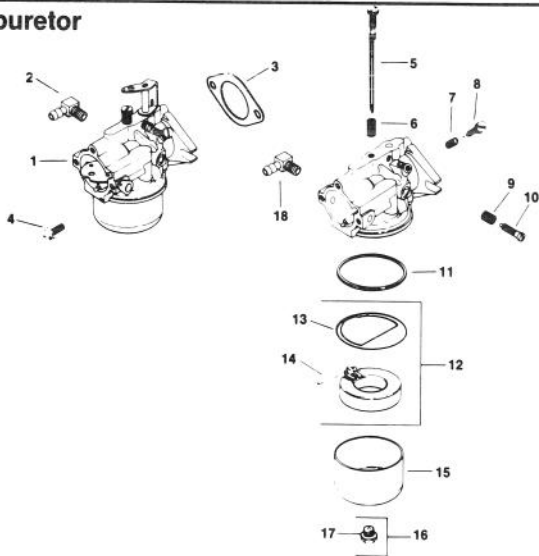
Breather & Vent



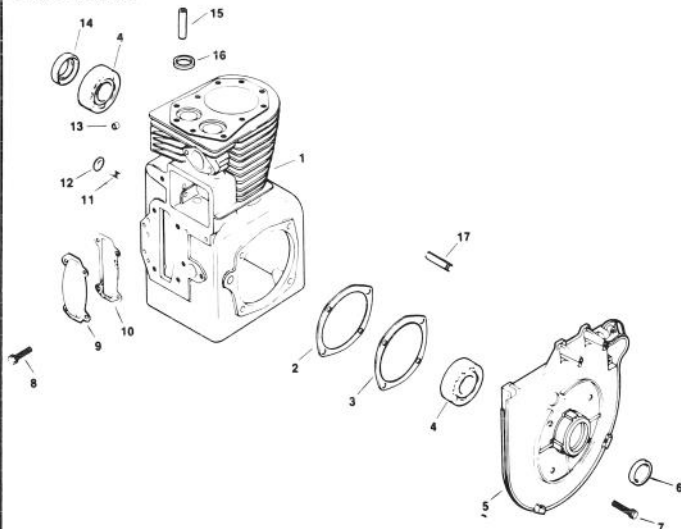
Camshaft & Valves



Carburetor



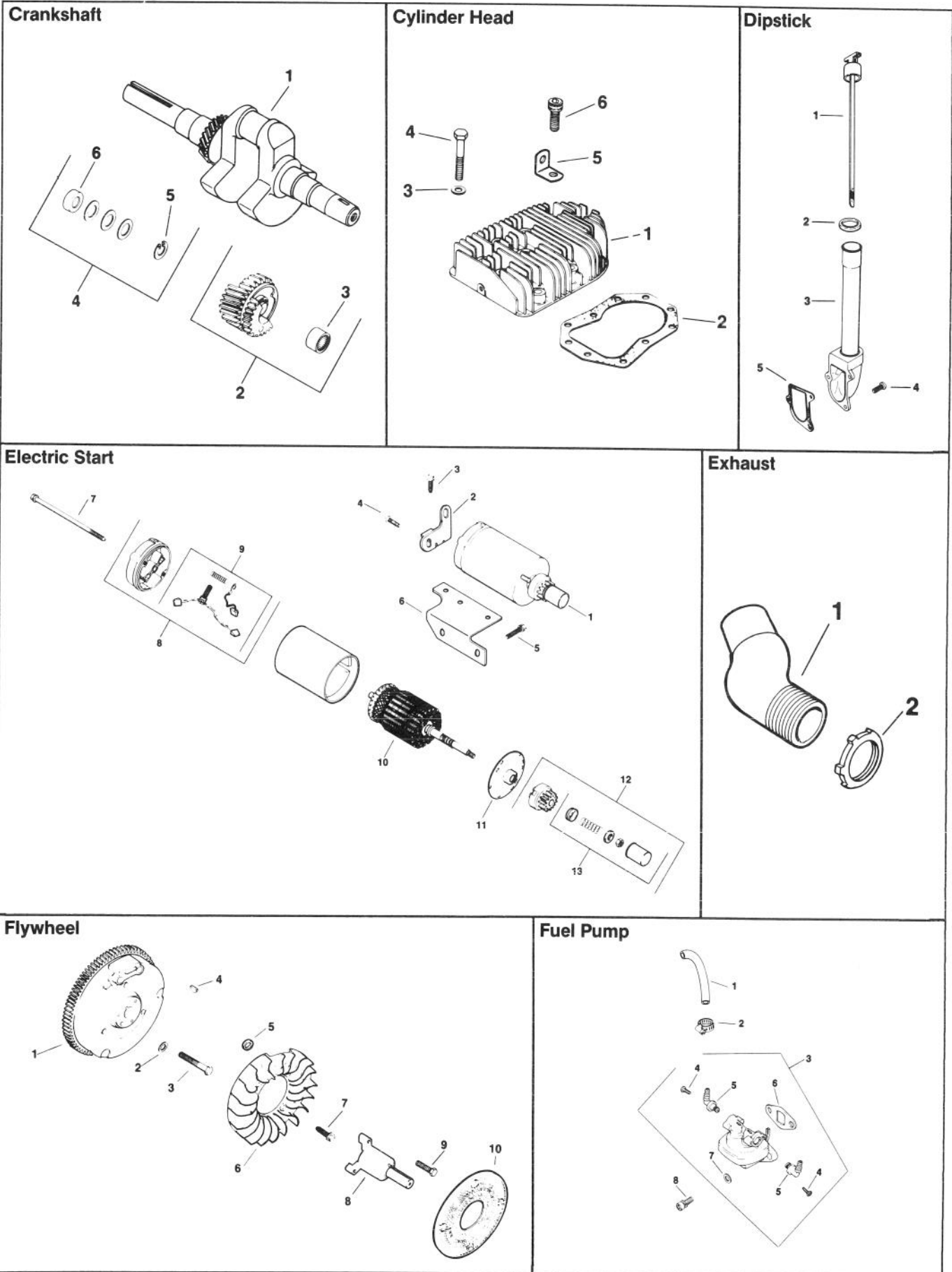
Crankcase



ENGINE KOHLER MODEL NO. M16QS SPEC NO. 711563

Ref. No.	Part No.	Description	No. Used	Ref. No.	Part No.	Description	No. Used
		Air Intake				Carburetor	
1	52 096 26	Cover – Air Cleaner	1	1	45 053 76	Carburetor Assembly (Incl. Ref. #5-18)	1
2	52 082 04	Cover – Element	1	2	25 155 02	Connector – Hose	1
3	45 083 01	Precleaner	1	3	47 049 01	Gasket – Carburetor	1
4	45 083 02	Element – Air Cleaner	1	4	X-770-1	Screw – Slted. Hd.	2
5	231032	Seal	1	5	45 103 01	Needle – Main Fuel Adj.	1
6	47 041 11	Gasket – Base	1	6	200383	Spring – Main Fuel	1
7	48 754 03	Kit – Air Cleaner Elbow (Incl. Ref. #8 & 9)	1	7	200380	Spring – Idle Fuel	1
8	52 086 11	Screw – Self Tap	1	8	275231	Needle – Idle Fuel Adj.	1
9	25 041 06	Gasket – Air Cleaner Elbow	1	9	232555	Spring – Idle Speed	1
10	X-22-9	Washer – I.T.L.W.	2	10	232556	Screw – Idle Speed Adj.	1
11	X-50-57	Screw – Pan Hd. Mach.	2	11	200375	Gasket – Bowl	1
12	X-50-37	Screw – Pan Hd. Mach.	1	12	25 757 03	Kit – Float (Incl. Ref. #13)	1
13	X-25-79	Washer – Plain	1	13	25 041 02	Gasket – Bowl Baffle	1
		Baffles & Shroud		14	200376	Pin – Float Hinge	1
1	45 063 08	Baffle – Head	1	15	235448	Bowl – Fuel	1
2	X-25-53	Washer – Plain	1	16	47 100 06	Screw – Bowl Retainer (Incl. Ref. #17)	1
3	47 086 08	Screw – Pozidriv T.H.	1	17	200372	Gasket – Bowl Screw	1
4	47 063 10	Baffle – Cylinder	1	18	X-391-10	Connector – Hose	1
5	52 086 11	Screw – Hex Wash. Hd.	6		25 757 02	Kit – Carburetor Repair	1
6	47 063 07	Baffle – Inner	1		25 757 05	Kit – Choke/Throttle Repair	1
7	47 027 42	Housing – Blower	1			Crankcase	
8	47 063 06	Baffle – Side Air	1	1		Block Cylinder Assembly (Incl. Ref. #13,15,16) (USE: Miniblock 4578233)	1
9	47 126 23	Bracket – Duct	1	2	47 422 05	Gasket – Shim	A/R
10	47 755 33	Kit – Air Duct	1	3	47 041 09	Gasket – Bearing Plate	1
11	X-67-64	Screw – Hex Wash. Hd.	3	4	235376	Bearing – Ball	2
12	X-25-20	Washer – Plain	1	5	47 146 11	Plate – Bearing	1
13	X-154A	Screw – H.C.	1	6	47 032 06	Seal – Front Oil	1
		Breather & Vent		7	X-159-2	Screw – H.C.	4
1	235048	Gasket – Breather Plate	1	8	X-132-6	Screw – H.C.	4
2	235631	Plate – Breather	1	9	235026	Cover – Camshaft	1
3	235047	Reed – Breather	1	10	235025	Gasket – Camshaft Cover	1
4	235117	Baffle – Breather	1	11	235125-5	Shaft – Governor Gear	1
5	235118	Filter – Breather	1	12	X-230-11	Plug – Expansion	1
6	231032	Seal – Breather	1	13	234866	Bearing – Gov. Cross Shaft	1
7	275144	Gasket – Valve Cover	1	14	47 032 07	Seal – Rear Oil	1
8	275839	Cover – Valve	1	15	230265	Insert – Valve	2
9	275220	Stud – Valve Cover	1	16	235007-5	Guide – Valve	2
10	X-799-1	Palnut	1	17	236559	Shaft – Balance Gear Stub	3
11	47 326 02	Hose	1				
12	X-426-3	Clamp – Hose	1				
13	X-426-9	Clamp – Hose	1				
		Camshaft & Valves					
1	47 010 11	Camshaft Assembly	1				
2	47 089 01	Spring – Actuating	1				
3	275066	Spacer .005	A/R				
	275067	Spacer.010	A/R				
4	47 380 09	Pin – Camshaft	1				
5	237672	Valve – Exhaust	1				
6	235582	Valve – Intake	1				
7	235011	Retainer – Upper Spring	2				
8	235168	Spring – Valve	2				
9	52 413 01	Rotator – Valve	2				
10	D-235327	Tappet	2				
11	41 755 10	Kit – Retainer	2				
12	X-702-3	Plug – Cup	1				

ENGINE KOHLER MODEL NO. M16QS SPEC NO. 711563



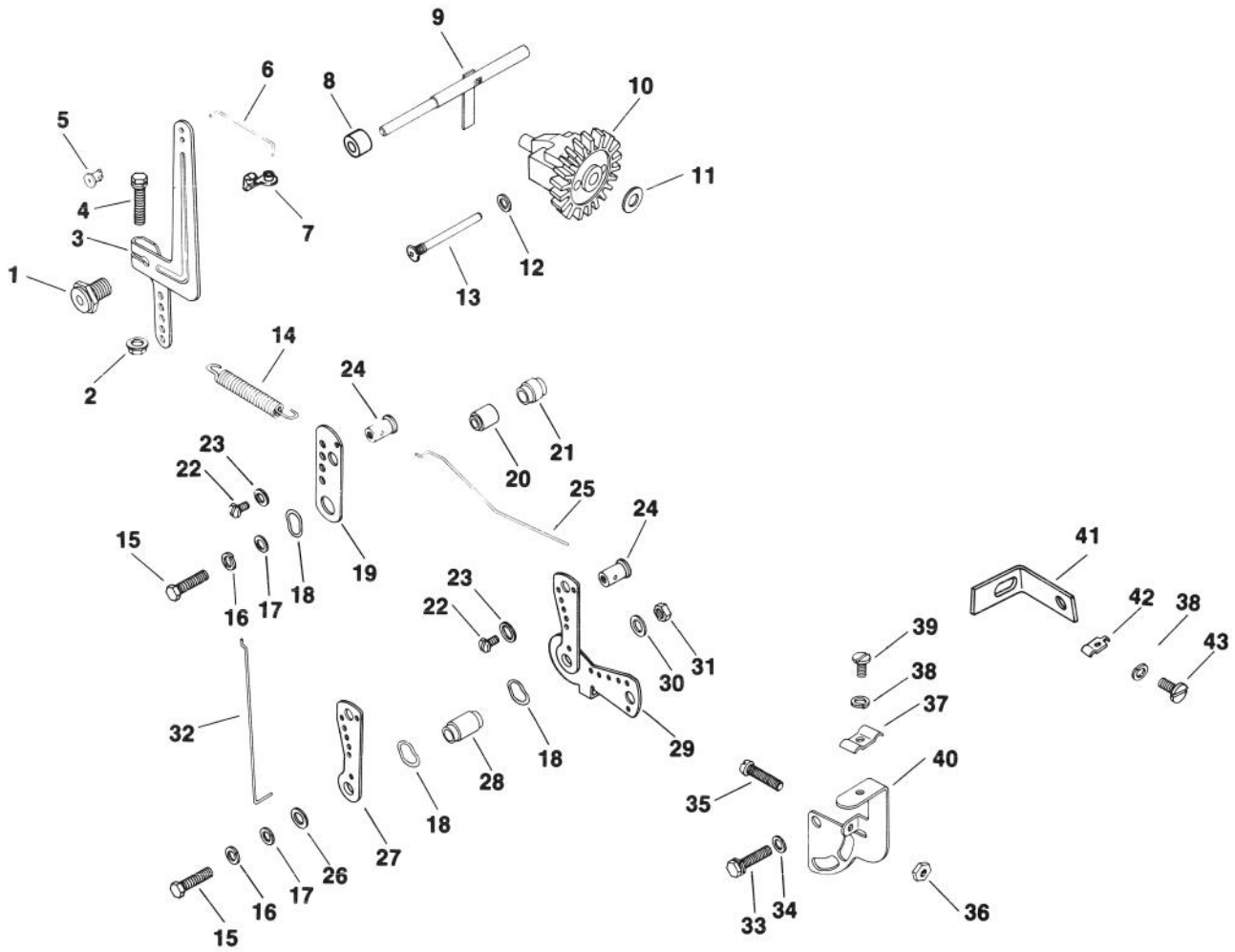
ENGINE KOHLER MODEL NO. M16QS SPEC NO. 711563

Ref. No.	Part No.	Description	No. Used
		Crankshaft	
1	45 014 86	Crankshaft	
2	45 043 03	Gear Assembly (Incl. Ref. #3)	3
3	47 030 01	Bearing - Needle	3
4	47 755 01	Kit - Spacer (Incl. Ref. #5 & 6)	1
5	X-269-34	Retainer	3
6	237769	Spacer	3
		Cylinder Head	
1	45 015 09	Head - Cylinder	1
2	45 041 17	Gasket - Head	1
3	270889	Washer - Plain	10
4	270158	Screw - H.C.	9
5	47 445 02	Strap - Lifting	1
6	47 086 17	Screw - Hex Socket Hd.	1
		Dipstick	
1	47 038 27	Dipstick	1
2	41 153 01	O-Ring	1
3	47 029 06	Adapter - Oil Fill	1
4	X-131-2	Screw - F.H.	3
5	237064	Gasket	1
		Electric Start	
1	41 098 04	Starter Assembly (Incl. Ref. #7-13)	1
2	45 126 17	Brace - Tail	1
3	X-67-83	Screw - Hex Wash. Hd.	1
4	X-67-62	Screw - Hex Wash. Hd.	1
5	X-159-2	Screw - H.C.	2
6	47 126 29	Bracket - Solenoid	1
7	41 086 19	Bolt - Thru	2
8	41 227 04	Cap - Commutator End (Incl. Ref. #9)	1
9	52 755 15	Kit - Brush	1
10	45 170 02	Armature	1
11	41 227 03	Cap - Drive End	1
12	47 755 07	Kit - Drive (Incl. Ref. #13)	1
13	47 755 13	Kit - Drive Parts	1
	25 450 03	Tag - Caution	1
	52 357 01	Lubricant - Starter	

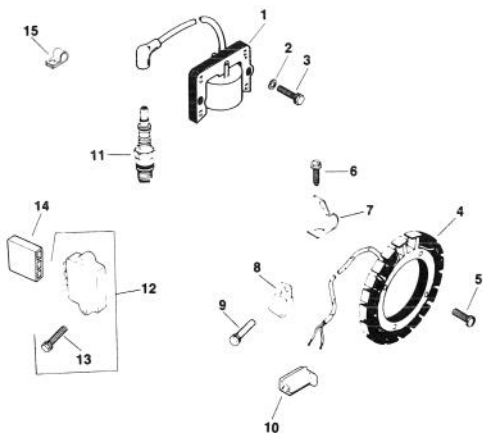
Ref. No.	Part No.	Description	No. Used
		Exhaust	
1	45 054 04	Elbow - Exhaust	1
2	45 100 01	Nut - Lock	1
		Flywheel	
1	47 025 53	Flywheel	1
2	52 468 15	Washer - Plain	1
3	25 086 24	Screw - Hex Mach.	1
4	X-46-3	Key - Woodruff	1
5	25 112 04	Spacer	4
6	25 157 01	Fan	1
7	25 086 21	Screw - Hex Wash. Hd.	4
8	235954	Shaft - Front Drive	1
9	X-159-2	Screw - H.C.	4
10	25 162 03	Screen - Grass	1
		Fuel Pump	
1	25 353 01	Line - Fuel	1
2	X-426-9	Clamp - Hose	2
3	47 559 08	Pump - Fuel Assembly (Incl. Ref. #4-7)	1
4	25 086 35	Screw - Tapping	2
5	25 294 01	Fitting & O-Ring - 90°	2
6	25 041 05	Gasket - Fuel Pump	1
7	X-25-63	Washer - Plain	2
8	X-174-2	Screw - F.H.M.	2

ENGINE KOHLER MODEL NO. M16QS SPEC NO. 711563

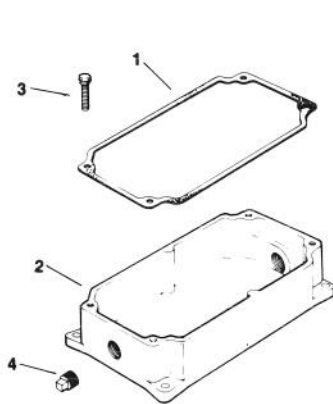
Governor



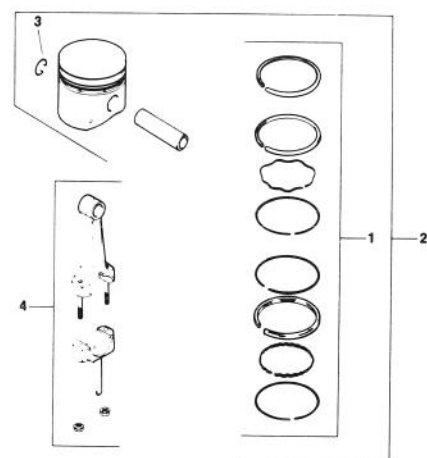
Ignition



Oil Pan



Piston & Rod



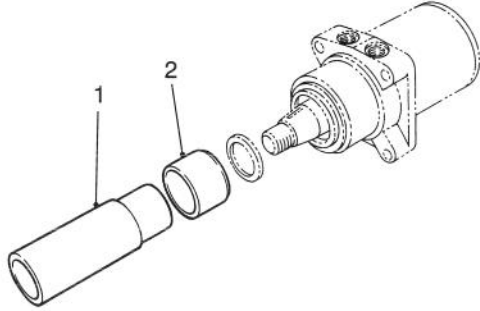
ENGINE KOHLER MODEL NO. M16QS SPEC NO. 711563

Ref. No.	Part No.	Description	No. Used	Ref. No.	Part No.	Description	No. Used
		Governor				Ignition	
1	235476	Bushing – Governor	1	1	47 584 02	Module – Ignition	
2	X-799-1	Palnut	1	2	X-25-79	Washer – Plain	2
3	47 090 20	Lever – Governor	1	3	X-156-1	Screw – H.C.	2
4	X-776-1	Screw – H.C.	1	4	237878	Kit – Stator	1
5	25 158 09	Bushing – Linkage Rtng.	1	5	X-67-51	Screw – Hex. Wash. Hd.	4
6	47 079 05	Linkage – Governor	1	6	X-67-59	Screw – Hex. Wash. Hd.	1
7	47 158 07	Bushing – Linkage Rtng.	1	7	X-728-1	Clip (Mounts to Bearing Plate)	1
8	X-400-80	Spacer	1	8	235173	Clip (Mounts to Cylinder Block)	1
9	A-235256-S	Kit – Governor Cross Shaft	1	9	X-132-6	Screw	1
10	A-235743-S	Kit – Governor Gear	1	10	41 155 03	Connector – Male	1
11	237022	Washer-Thrust	1	11	235041-5	Spark Plug RH-10	1
12	25 468 01	Washer – Plain	1	12	25 755 03	Kit – Rectifier-Regulator (Incl. Ref. #13)	1
13	231355	Pin – Governor Stop	1	13	X-132-5	Screw – H.C.	2
14	235496	Spring – Governor	1	14	236602	Connector – Female	1
15	X-5-26	Screw – H.C.	2	15	210281	Clip – Hi-Tension Lead	1
16	X-20-1	Washer – Lock	2		47 518 38	Lead – White, Module to Connector (23" – 18 g. – insulated push on tab – uninsulated push on tab terminals)	1
17	X-25-63	Washer – Plain	2		47 518 46	Lead – Violet, Rectifier Regulator to Connector (12.5" – 14-gauge – uninsulated push on tab terminals)	1
18	275690	Washer – Wave	3			Oil Pan	
19	235086	Bracket – Speed Control	1	1	235057	Gasket – Oil Pan	1
20	235085	Spacer	1	2	47 199 10	Pan-Oil	1
21	X-384-2	Spacer	1	3	X-159-3	Screw – H.C.	4
22	X-51-8	Screw – Slted. Pan Hd.	1	4	X-75-6	Plug – Sq. Hd. Solid	2
23	X-25-102	Washer – Plain	1			Piston & Rod	
24	48 755 10	Kit – Clamp (Incl. Ref. #22 & 23)	1	1	45 108 10	Ring Set (Std. & .003)	1
25	47 079 08	Linkage – Throttle	1		45 108 11	Ring Set(.010)	1
26	X-25-82	Washer – Plain	1		45 108 12	Ring Set (.020)	1
27	47 090 05	Lever – Choke	1		45 108 13	Ring Set (.030)	1
28	47 112 19	Spacer	1	2	45 874 11	Piston w/Ring Set (Std.)	1
29	47 090 09	Lever – Throttle	1		45 874 12	Piston w/Ring Set (.003)	1
30	X-25-95	Washer – Plain	1		45 874 13	Piston w/Ring Set (.010)	1
31	X-81-1	Nut – Hex	1		45 874 14	Piston w/Ring Set (.020)	1
32	47 079 01	Linkage – Choke	1		45 874 15	Piston w/Ring Set (.030)	1
33	X-132-6	Screw – H.C.	1	3	47 018 01	Retainer – Piston Pin	2
34	X-25-72	Washer – Plain	1	4	45 067 24	Connecting Rod (Std.)	1
35	232556	Screw	1		45 067 25	Connecting Rod (.010)	
36	X-72-4	Nut – Hex	1		45 782 33	Miniblock	1
37	1223701	Clamp – Cable	1		47 004 02	Gasket Set w/o Seals	1
38	X-19-1	Washer-Lock	2		45 755 12	Gasket Set w/Seals	1
39	X-67-38	Screw	1				
40	47 126 13	Bracket – Choke	1				
41	47 126 36	Bracket – Choke	1				
†42	81-1690	Clamp – Cable	1				
43	X-15-5	Screw – F.H.M.	1				

†Available from your local TORO Distributor

SPECIAL TOOLS

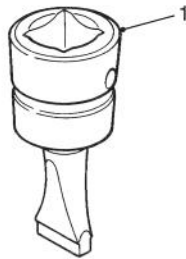
DRIVE MOTOR SEAL INSTALLATION TOOL NO. *19-2660



T-0728

Ref. No.	Part No.	Description	No. Used
1		Driver – Seal	1
2		Holder – Seal	1

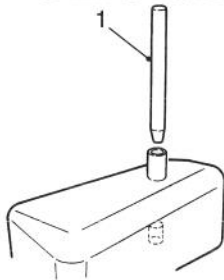
BEDKNIFE SCREW TOOL NO. *TOR510880



T-0729

Ref. No.	Part No.	Description	No. Used
1		Tool – Bedknife Screw	1

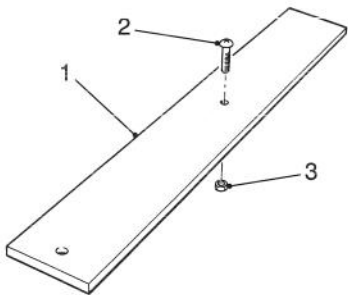
HYDRAULIC OIL RESERVOIR PLUG NO. *88-9220



T-1213

Ref. No.	Part No.	Description	No. Used
1		Plug – Reservoir	1

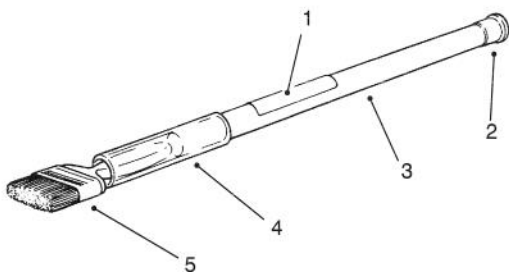
GAUGE BAR ASSEMBLY NO. *TOR138199



T-1151

Ref. No.	Part No.	Description	No. Used
1	65-8320	Bar – Height-Of-Cut	1
2	32122-2	Screw – Round Hd.	1
3	3219-14	Nut – Hex.	1

BACKLAPPING BRUSH ASSEMBLY NO. *TOR299100



T-0731

Ref. No.	Part No.	Description	No. Used
1	12-9140	Decal	1
2	2410-18	Plug	1
3	29-9080	Handle	1
4	29-9090	Hose – Handle	1
5	36-4310	Brush	1

*Obtain these items directly from OTC 2013 4th St. Owatonna, MN. 55060 1-800-533-0492
(in Minnesota and Canada 1-507-455-7050) Fax. 507-455-7011.

TORO PART NUMBER INDEX

3317-897

Part No.	Description	Pg. No.	Ref. No.	Qty.	Part No.	Description	Pg. No.	Ref. No.	Qty.
3-0348	Bushing - Sleeve	31	7	4	28-8080	Boot - Battery Terminal	15	6	1
3-0348	Bushing - Sleeve	32	17	2	29-6120	Plate - Pump	20	29	1
3-6498	Washer - Thrust	3	17	A/R	29-6150	Spring - Leaf	20	26	1
5-0743	Spring - Extension	32	1	1	29-6170	Spring - Extended Leaf	20	27	1
5-0743	Spring - Extension	31	17	2	29-9080	Handle	34	3	1
5-2653	Cable Pulley Assembly	26	8	1	29-9090	Hose - Handle	34	4	1
5-2655	Keeper - Cable	26	7	1	36-4310	Brush	34	5	1
5-2656	Keeper - Cable	26	30	1	37-9590	Spring	5	21	1
5-4723	Spring - Compression	10	31	1	38-7820	Bearing - Idler	25	3	2
5-7280	Key - Square (Short)	25	16	3	38-8000	Filter - Fuel	9	5	1
5-7290	Spring - Extension	21	6	1	42-2040	Screw - Hex. Hd. Self Tap	20	23	3
10-4850	Spring - Compression	2	44	2	43-1950	Valve - Hydraulic	29	19	1
10-6821	Brake Drum Assembly	21	18	2	43-8600	Spring - Compression	5	29	1
10-6870	Hub - Wheel	21	19	2	43-8610	Guide - Spring & Ball Seat	5	30	1
10-6870	Hub - Wheel	4	22	1	43-8620	Guide - Switch Pin	5	25	1
10-7070	Key - Square	12	5	1	43-8860	Plunger - Switch	5	26	1
10-7130	Wire - Battery/Solenoid	11	3	1	43-8870	Boot - Switch	5	20	1
10-8120	Bolt - Battery	15	8	2	44-2212	Lamp - Pilot	10	3	1
11-0590	Screw - Thread Forming	26	17	4	44-8310	Ring - Retaining	13	3	2
11-0590	Screw - Cap Hex. Hd.	15	20	2	44-8320	Spring - Compression	13	10	3
12-3270	Screw - Cap Hex. Hd.	12	30	4	44-8330	Spacer - Pulley Bearing	13	6	1
12-9140	Decal	34	1	1	44-8350	Field Assembly	13	1	1
13-1279	Idler Pulley Assembly	25	*	1	44-8360	Field Coil, Rotor & Bearing	13	4	1
16-1089	Lift Arm Assembly	32	29	1	46-8400	Bearing - Needle	18	42	1
16-1159	Lift Arm Assembly L.H.	31	8	1	46-8810	Stop - Spring	20	4	1
16-1169	Lift Arm Assembly R.H.	31	*	1	47-2980	Hose - Fuel	9	3	1
18-2970	Clamp - R	32	21	1	47-2988	Hose - Fuel	9	7	1
21-0141	Rod End Assembly	3	15	1	48-1800	Cylinder Block Kit	18	5	1
21-0151	Rod End Assembly	4	30	1	49-2040	Screw - Tapping	12	13	5
22-8330	Plug	30	1	2	49-8480	Shaft - Trunion	18	12	1
22-8340	Spring	30	3	2	49-8510	Kit - Charge Relief	19	*	1
22-8350	Ball	30	4	2	49-8520	Kit - Implement Relief	19	*	1
22-8360	Pin - Cam	30	6	2	51-3150	Shim - Spring Arm	20	28	1
22-8370	Seat - Check Valve	30	5	2	54-0110	Filter - Oil	17	28	1
22-8380	Retainer - Spring	30	10	2	55-4300	Decal - Warning	31	9	2
22-8410	Spring	30	11	1	55-4300	Decal - Warning	32	24	1
22-8420	Spool	30	8	1	56-2230	Hose - Fuel	9	9	1
22-8480	Snap Ring - Spool	30	13	1	56-7976	Clamp - Hose	4	6	2
22-8490	Snap Ring	30	14	1	56-7976	Clamp - Tube	23	11	2
22-8500	O-Ring	30	9	2	56-7982	Sleeve - Protective	16	*	1
23-0660	Switch - Key	10	19	1	56-9510	Bushing Assembly	33	10	2
23-3030	Spacer	30	12	1	56-9520	Bushing - Nylon	33	16	1
23-8910	Fitting - 90° Hose Elbow	17	26	2	57-3210	Screw - Hex. Washer Hd.	1	32	2
25-2380	Plate - Thrust	18	39	1	61-0020	Shroud - Muffler	12	31	1
25-2390	Plate - Valve	18	40	1	61-0030	Tank - Fuel	9	10	1
25-2400	Gasket	18	43	1	61-0070	Pulley - Poly V	25	28	1
25-2430	Pin - Straight	18	41	1	61-0100	Tank - Hydraulic	15	24	1
25-2450	Swash/Plate	18	37	1	61-0140	Pulley - Jackshaft	25	22	3
25-2460	Plug	18	14	2	61-2070	Rod - Steering	3	13	1
25-2470	Kit - Shim Pack	18	16	2	61-2070	Rod - Steering	4	28	1
25-2480	Spring - Charge Relief	18	32	1	61-2090	Steering Column Assembly	3	8	1
25-2490	Ball - Check Valve	18	47	2	61-2120	Bracket - Air Cleaner	12	6	1
25-2510	Washer	18	11	2	61-2220	Spacer	9	20	4
25-2530	Pin - Straight	18	26	1	61-2230	Plate - Pump Mount	17	13	1
25-2570	Spring - Relief Valve	18	17	1	61-2350	Mount - Bearing	25	27	2
25-2630	Ring	18	3	1	61-2430	Hub - Lift	26	45	1
25-2640	Spring - Check Valve	18	48	2	61-2490	Hose - Hydraulic	26	42	1
25-2650	Plug - Check Valve	18	49	2	61-2490	Hose Assembly	14	2	1
25-2680	Gerotor Assembly	18	25	1	61-2500	Hose - Hydraulic	26	41	1
25-3180	Kit - Check Valve	19	*	1	61-2500	Hose Assembly	14	1	1
25-3210	Seal - Lip	18	10	2	61-2510	Hose Assembly	14	15	1
26-3790	Nut - Lock	4	21	1	61-2510	Hydraulic Hose Assy. (Low)	29	20	1
26-3790	Nut - Lock	21	23	2	61-2520	Hose Assembly	14	13	1
27-9870	Pin - Seat Spring	5	28	1	61-2520	Hydraulic Hose Assy. (Up)	29	12	1
28-0120	Bracket - Hinge L.H.	1	19	1	61-2540	Hose - Hydraulic	17	8	1
28-0130	Bracket - Hinge R.H.	2	42	1	61-2540	Hose Assembly	14	17	1
28-3670	Shaft - Trunion	18	28	1	61-2550	Hose - Hydraulic	17	27	1
28-4210	Solenoid - Starter	15	14	1	61-2550	Hose Assembly	14	16	1
28-6180	Pin	5	47	1	61-2610	Arm - Traction	20	14	1

*Not Illustrated

TORO PART NUMBER INDEX (Cont.)

Part No.	Description	Pg. No.	Ref. No.	Qty.	Part No.	Description	Pg. No.	Ref. No.	Qty.
61-2660	Wire - Solenoid/Starter	11	1	1	66-5291	Hydraulic Motor Assembly	21	30	2
61-2670	Wire - Ground	11	2	1	66-5340	Grille - Front	2	38	1
61-2680	Weight - Standard	9	14	1	66-6110	IGR Assembly	24	5	1
61-2710	Fitting - 90° Hose Elbow	17	6	1	66-6120	Pad-Foot	1	27	1
61-2720	Bracket - Lever	29	13	1	66-6840	Decal - Hot	15	25	1
61-2790	Screen - Filler	15	27	1	66-6840	Decal - Hot	12	47	1
61-2940	Lever-Pump	20	31	1	67-7490	Key - Square (Long)	25	18	1
61-3070	Tube - Hyd. L.H. (Rear)	17	25	1	67-7750	Pulley - Idler	25	4	1
61-3070	Tube Assembly	14	19	1	67-7870	Idler Bracket W.A.	25	11	1
61-3080	Tube - Hyd. L.H. (Front)	17	24	1	67-7890	Belt Tensioner W.A.	25	6	1
61-3080	Tube Assembly	14	20	1	67-7911	Strap - Idler Bracket	25	2	1
61-3210	Cable Pulley Assembly	26	22	3	67-8020	Shaft - Pump	18	6	1
61-3230	Spacer	26	24	3	67-8030	Plug Assembly	18	19	2
61-3240	Keeper - Cable	26	21	1	67-8040	O-Ring	18	20	2
61-3260	Cable - Lift	26	19	1	67-8050	Bearing - Needle	18	22	1
61-3270	Spring - Compression	31	6	2	67-8060	Seal - Lip	18	23	1
61-3310	Plate - Toro Logo	9	13	1	69-9760	Cover - Plate	23	10	1
61-3320	Pulley - Pump	17	17	1	69-9760	Plate - Cover	4	4	1
61-3340	Bushing - Taper	12	46	1	70-7080	Spacer - Clutch	12	18	1
61-3350	Bushing - Taper	17	19	1	70-8020	Clutch Assembly	12	21	1
61-3390	Belt - Poly-V	12	25	1	70-8030	Key	12	36	1
61-3470	Hose	12	11	1	70-8040	Washer - Flat	12	22	1
61-3550	Valve - Ball	9	8	1	70-8150	Plate - Valve	24	7	1
61-3770	Head - Filter	17	29	1	70-9840	Shoe - Brake	21	16	4
61-3830	Chain - Lift	26	33	2	70-9850	Clip - Retaining	21	35	2
61-3840	Decal - Reelmaster 216	5	16	2	70-9860	Pin - Pivot Brake	21	25	2
61-3880	Panel - Access R.H.	5	52	1	70-9870	Plate - Brake	21	27	2
61-3990	Parking Brake Assembly	21	5	1	70-9880	Spring - Extension	21	17	4
61-7250	Boot	31	5	4	71-0710	Hydraulic Tube Assembly	7	3	1
62-4290	O-Ring	18	44	2	71-0710	Tube Assembly	14	12	1
62-5140	Weight - 8 Blade	9	*	1	71-0770	Fitting	29	7	1
62-5250	Armature & Pulley Assembly	13	5	1	71-0840	Hydraulic Tube Assembly	7	6	1
62-5330	Bracket - Side Panel	5	7	1	71-0840	Tube Assembly	14	11	1
62-5400	Hood Assembly	1	5	1	71-0850	Tube Assembly	14	7	1
62-7170	Spacer	5	39	1	71-0850	Tube Assembly	23	8	1
62-7190	Spacer	1	30	1	71-0860	Tube Assembly	29	9	1
62-7240	Cover - Spring	32	2	1	71-0860	Tube Assembly	14	25	1
62-7250	Boot	32	18	2	71-0870	Tee - Tube Assembly	23	1	2
62-7300	Chain	32	3	1	71-0870	Tube Assembly	14	3	2
62-7320	Stop - Traction Pedal	1	9	1	71-0880	Tube Assembly	23	2	1
62-7350	Slide - Pedal Stop	1	11	2	71-0880	Tube Assembly	14	5	1
62-7400	Decal - Toro Logo	1	4	1	71-0910	Tube Assembly	14	4	1
63-4880	Hose Assembly	14	14	1	71-0910	Tube Assembly	23	12	1
63-4880	Hydraulic Hose Assembly	16	18	1	71-1370	Spring - Compression	26	35	1
63-4890	Hose Assembly	14	9	1	71-1380	Pin - Spring	26	34	1
63-4890	Hydraulic Hose Assembly	16	15	1	71-1500	Brake Assembly	22	*	2
63-5080	Pressure Sequence Valve	16	12	1	71-2960	Valve - Flow Control	23	6	1
63-5400	Exchanger - Heat	16	30	1	72-4150	Shield - Heat	1	24	1
63-8360	Key	10	9	1	72-4320	Switch - Neutral	5	31	1
63-8770	Fitting - 45° Orifice	16	11	1	72-4350	Panel - Access L.H.	5	19	1
63-8790	Cartridge Valve Assembly	16	10	1	72-4360	Footrest - L.H.	1	29	1
63-8800	Seal Kit	16	*	1	72-4790	Clamp - Battery	15	2	1
63-8940	Shield - Cooler	16	17	1	72-9540	Bracket - Heat Shield	1	23	1
65-4500	Seal - Snap Ring	24	14	1	74-0720	Tube - Manual	5	45	1
65-4550	Valve - Check Ball	24	6	2	74-9100	Pad - Pedal Forward	20	7	1
65-4560	Plug - Hex (Hollow)	24	3	1	74-9110	Pad - Pedal Reverse	20	11	1
65-4570	Seal - Square Ring	24	4	2	75-6820	Meter - Hour	10	1	1
65-4580	Screw - Cap Hex Hd.	24	1	8	75-7730	Spacer	4	2	1
65-4590	Ring - Snap	24	21	1	75-9260	Support - Hydraulic Tank	5	2	1
65-4600	Washer - Thrust	24	19	2	75-9310	Latch - Hood	1	6	1
65-4610	Bearing - Thrust	24	20	1	75-9320	Bushing - Hood Latch	10	33	1
65-4620	Seal - O-Ring	24	12	1	75-9330	Pin - Hood Latch	10	30	1
65-4640	Key - Square	21	10	2	76-0020	Hydraulic Cylinder Assembly	26	37	1
65-4640	Key - Woodruff	4	15	1	76-0030	Repair Kit	28	*	1
65-4670	Body & Bearing Assembly	24	9	1	76-0040	Piston	28	8	1
65-4680	Cover & Bearing Assembly	24	2	1	76-0050	Ring - Retaining	28	12	1
65-8320	Bar - Height-Of-Cut	34	1	1	76-0070	Bracket - Interlock Module	12	15	1
66-0120	Knob	10	2	2	76-0080	Collar - Bearing	13	7	1
66-5291	Hydraulic Motor Assembly	4	24	1	76-0090	Head	28	3	1

*Not Illustrated

TORO PART NUMBER INDEX (Cont.)

3317-897

Part No.	Description	Pg. No.	Ref. No.	Qty.	Part No.	Description	Pg. No.	Ref. No.	Qty.
76-0130	Hood Stop Chain Assembly	1	22	1	84-1990	Rod - Adjusting	21	32	2
76-0190	Cap-Oil	15	31	1	84-2000	Bracket - Brake	21	29	2
76-0200	Oil Cap Assembly	15	*	1	84-8440	Bushing - Flange	26	11	2
76-0220	Foam - Oil Filter	15	30	1	85-5160	Lever - Valve	29	2	1
76-0240	Dipstick Assembly	15	29	1	85-5230	Bracket - Seat Pivot	6	53	2
76-0300	Housing - Bushing	33	12	1	85-5330	Plate - Seat	5	14	1
76-0350	Housing - Bushing	33	2	1	85-5340	Tube - Pivot	5	48	2
76-0360	Cup - Retainer	33	6	1	85-6540	Stud - Drive	4	16	4
76-0370	Bolt - Shoulder	32	12	2	85-6540	Stud - Drive	21	26	8
76-0370	Bolt - Shoulder	31	23	2	88-8220	Valve - By-Pass	18	4	1
76-0390	Spacer	33	15	1	88-9550	Decal - Service Information	5	34	1
76-0410	Spring - Compression	33	7	1	92-1157	Shaft	24	10	1
76-0420	Rod - Pump Control	20	9	1	92-1810	Arm - Torque	12	19	1
76-0440	Battery Support W.A.	15	10	1	92-1812	Shaft - Lift Pivot	31	25	2
76-0500	Cover - Reservoir Support	5	41	1	92-1812	Shaft - Lift Pivot	32	31	1
76-1420	Wheel - Steering	3	10	1	92-1813	Spacer - Torque Arm	12	20	1
76-2170	Pedal - Traction	20	8	1	92-1814	Spacer - Torque Arm	12	51	1
76-2200	Footrest - Traction	1	12	1	92-1815	Rod - Pivot	31	13	2
76-2220	Adjustment Yoke Assembly	17	36	1	92-1815	Rod - Pivot	32	26	1
76-2260	Pad - Footrest	1	13	1	92-1818	Arm - Tension	32	7	1
76-2320	Shaft	28	4	1	92-1818	Arm - Tension	31	29	2
76-2330	Nut - Lock	28	5	1	92-1819	Pulley - Engine	12	45	1
76-2350	Seal/Retainer Assembly	24	*	1	92-1820	Frame Assembly	3	19	1
76-2360	Body Seal Kit	24	*	1	92-1821	V-Belt - Pump	17	16	1
76-2430	Scraper - Pulley	31	2	2	92-1840	Bracket - Cylinder & Cooler	26	1	1
76-2460	Bearing Assembly	25	25	2	92-1841	Nut - Hood Pivot	2	41	2
76-2520	Hose Assembly	14	6	2	92-2406	Hose Assembly	14	24	1
76-2520	Hydraulic Hose	17	1	2	92-2406	Hydraulic Hose Assembly	16	32	1
76-2530	Hose Assembly	14	8	1	92-2407	Hose Assembly	14	18	1
76-2530	Hydraulic Hose Assembly	16	1	1	92-2407	Hydraulic Hose Assembly	16	28	1
76-2540	Hose Assembly	14	22	1	92-2408	Hose - Hydraulic	17	12	1
76-2540	Hose Assembly - Hyd.	17	38	1	92-2408	Hose Assembly	14	26	1
76-2550	Hose Assembly	14	21	1	92-3162	Bushing - Flange	3	4	4
76-2550	Hose Assembly	17	44	1	92-3165	Steering Shaft & Gear	3	5	1
77-0480	Screw - Traction Stop	2	45	1	92-3172	Gear - Steering	3	16	1
80-3940	Clip - Rosebud	5	50	1	92-3179	Decal - Control	7	10	1
80-4080	Hydraulic Hose Assembly	4	36	1	92-3180	Panel	5	42	1
80-4080	Tube Assembly	14	10	1	92-3191	Diode - Circuit Board	11	4	1
80-4090	Hose - Hydraulic	7	5	2	92-3194	Switch - Clutch	10	20	1
80-4090	Hose - Hydraulic	4	14	2	92-3195	Knob	10	26	1
80-4090	Hose Assembly	14	23	2	92-3196	2 Position Valve Assembly	7	2	1
80-4110	Control - Throttle	10	23	1	92-7904	Cap - Valve	8	1	1
80-4120	Control - Choke	10	22	1	92-7911	Boot	8	10	1
80-4240	Footrest R.H.	1	14	1	92-7912	Retainer - Boot	8	14	1
82-4640	Battery - 12 Volt	15	7	1	92-7913	Seal Repair Kit	8	*	1
83-7260	Cone - Relief Valve	18	18	2	92-7940	Housing - Charge Pump	18	21	1
83-7270	Fork - Caster	4	10	1	92-7949	Muffler	12	26	1
83-7820	Shaft - Drive	25	20	1	92-8776	Plug Assembly	19	52	2
83-7900	Belt Tensioner Assembly	32	11	2	92-8777	Seal - O-Ring	18	51	2
83-7900	Belt Tensioner Assembly	31	24	2	92-9023	Hydraulic Pump Assembly	18	8	1
83-7910	Rod	33	8	1	92-9023	Pump Assembly	17	5	1
83-7930	Yoke	33	3	1	93-0166	Tire	4	17	1
83-8860	Shield - Front R.H.	2	35	1	93-4410	Fuse - 25 Amp. Slo-Blo	10	27	1
83-9130	Keeper - Cable	26	48	1	93-4424	Decal - Instrument Panel	10	12	1
83-9250	Lever - Brake	21	36	2	93-4426	Panel W.A. - Instrument	5	10	1
83-9270	Pivot - Brake L.H.	21	40	1	93-6868	Step - Foot	5	18	1
83-9310	Pivot - Brake R.H.	21	*	1	93-6912	Shackle	31	26	2
83-9330	Shaft - Brake	21	41	1	93-6912	Shackle	32	34	1
83-9340	Shield - Grass	21	13	2	93-7198	Cap-Fuel	9	11	1
83-9350	Rod - Parking Brake	21	1	1	94-1750	Stop	27	49	1
83-9460	Tube - Hydraulic	7	13	1	94-1754	Neutral Switch Assembly	20	5	1
83-9500	Tube - Hydraulic	7	12	1	94-1755	Switch - Neutral	20	35	1
83-9550	Decal - Warning	5	44	1	94-1776	Pin - Cylinder Guide	26	12	1
83-9690	Spring - Compression	25	9	1	94-3405	Bearing	25	29	2
83-9800	Shield - Front Grass L.H.	1	33	1	94-3415	Wire Harness Assembly	11	5	1
83-9810	Bushing - Flange	25	10	1	94-3424	Bracket - Switch	27	53	1
84-1650	Decal - Brake	1	28	1	94-3425	Screw	8	16	1
84-1830	Cap - Battery Vent	15	32	1	94-3426	Stop - Valve	8	13	1
84-1840	Grille - Muffler	12	37	1	94-3427	Plug Assembly	8	2	1

*Not Illustrated

TORO PART NUMBER INDEX (Cont.)

Part No.	Description	Pg. No.	Ref. No.	Qty.	Part No.	Description	Pg. No.	Ref. No.	Qty.
94-3428	Module - Ignition	12	16	1	2412-113	Clamp-R	29	10	1
94-3429	Lift Switch Assembly	26	4	1	2412-114	Clamp	4	34	1
217-60	Rim	21	21	2	2412-133	Clamp - R	5	46	2
218-461	Nut	10	10	1	251-8	Bearing - Ball	18	35	1
218-461	Nut - Jam	5	22	2	251-77	Collar - Locking	25	23	2
218-489	Fuse Holder Assembly	10	14	2	251-259	Bearing - Ball	20	32	1
218-535	Nut	10	18	1	251-291	Bearing - Pulley	13	8	2
218-536	Washer - Lock	10	17	1	251-292	Bearing - Field	13	2	1
218-562	Lens	10	5	1	252-82	Bearing - Needle	18	9	2
219-18	Bulb- Light (GE #1893)	10	4	1	256-1	Bushing - Sleeve	26	23	3
2112-9	Clamp - Muffler	12	27	1	256-2	Bushing - Sleeve	26	44	1
231-127	Tire	21	20	2	256-27	Bushing - Sleeve	3	6	2
232-27	Valve - Stem	21	24	2	256-115	Washer - Thrust	31	12	2
232-47	Valve Stem	4	20	1	256-115	Washer - Thrust	32	25	1
233-17	Knob	10	34	1	256-173	Bushing - Sleeve	33	11	1
233-37	Knob	29	1	1	256-245	Bushing - Flange	3	18	2
233-46	Knob	8	11	1	256-247	Bushing - Flange	3	1	2
237-7	Seal - O-Ring	5	24	1	256-287	Bushing - Flange	3	2	2
237-21	O-Ring	29	16	2	256-321	Bushing - Flange	3	20	4
237-21	Seal - O-Ring	22	47	3	2710-16	Link - Chain	29	5	1
237-22	O-Ring	18	2	1	282-2	Clevis	21	34	2
237-22	O-Ring	29	8	2	282-4	Clevis	32	5	1
237-22	Seal - O-Ring	8	3	1	282-4	Clevis	26	31	4
237-22	Seal - O-Ring	7	4	2	283-1	Pin - Clevis	32	20	1
237-22	Seal - O-Ring	16	6	5	283-1	Pin - Clevis	21	37	2
237-22	Seal - O-Ring	4	13	2	283-2	Pin - Yoke	17	47	1
237-22	Seal - O-Ring	26	40	2	283-6	Pin - Clevis	32	6	1
237-30	O-Ring	17	2	12	283-6	Pin - Clevis	26	14	4
237-30	O-Ring	23	3	4	283-40	Pin - Clevis	31	3	2
237-30	O-Ring	29	11	1	283-40	Pin - Clevis	32	14	2
237-30	O-Ring	17	40	3	283-42	Pin - Clevis	26	9	1
237-30	Seal - O-Ring	16	2	8	283-55	Pin - Clevis	33	5	1
237-30	Seal - O-Ring	21	7	4	283-75	Pin - Clevis	31	20	4
237-30	Seal - O-Ring	7	7	4	283-75	Pin - Clevis	32	32	2
237-30	Seal - O-Ring	5	32	1	283-78	Pin - Clevis	26	36	1
237-37	Bumper	27	52	2	283-79	Pin - Clevis	26	29	1
237-37	Bumper - Rubber	5	17	2	285-17	Plug - Pipe	18	1	2
237-42	O-Ring	30	2	2	302-5	Fitting - Grease	3	3	4
237-42	O-Ring	23	5	2	302-5	Fitting - Grease	4	3	1
237-42	O-Ring	29	6	1	302-5	Fitting - Grease	33	14	1
237-42	Seal - O-Ring	26	38	2	302-5	Fitting - Grease	25	26	2
237-71	O-Ring	15	28	1	302-60	Fitting - Grease	31	16	2
237-78	O-Ring	29	14	2	302-60	Fitting - Grease	32	30	1
237-78	Seal - O-Ring	4	38	1	321-2	Screw	1	26	2
237-78	Seal - O-Ring	22	46	2	321-5	Screw - Cap Hex. Hd.	21	15	8
237-79	O-Ring	17	4	2	321-5	Screw - Cap Hex. Hd.	1	20	1
237-79	O-Ring	29	22	1	321-6	Screw - Cap Hex. Hd.	20	30	2
237-79	Seal - O-Ring	7	9	3	321-8	Screw - Cap Hex. Hd.	4	35	1
237-80	O-Ring	17	9	1	321-9	Screw - Hex. Washer Hd.	26	10	1
237-80	Seal - O-Ring	21	9	4	321-11	Screw - Cap Hex. Hd.	5	11	2
237-80	Seal - O-Ring	4	11	2	321-11	Screw - Cap Hex. Hd.	16	13	2
237-86	O-Ring	18	15	4	321-13	Screw - Cap Hex Hd.	17	22	3
237-88	Grommet	5	51	1	321-13	Screw - Cap Hex. Hd.	12	1	3
237-95	O-Ring	18	27	1	321-23	Screw - Cap Hex.Hd.	29	24	3
237-117	O-Ring	17	30	2	321-28	Screw - Cap Hex Hd.	23	13	1
237-125	Grommet	9	2	2	321-39	Screw - Cap Hex. Hd.	10	6	4
237-150	Seal - O-Ring	16	5	2	322-1	Screw - Cap Hex. Hd.	7	1	2
242-50	Nut - Lug	4	19	4	322-3	Capscrew - Hex. Hd.	9	17	4
242-50	Nut - Lug	21	22	8	322-3	Screw - Cap Hex. Hd.	15	1	2
242-76	Rim	4	18	1	322-3	Screw - Cap Hex. Hd.	1	25	31
2410-18	Plug	34	2	1	322-3	Screw - Cap Hex. Hd.	12	52	1
2411-52	Bear - Rod End R.H.	20	12	1	322-3	Screw - Hex. Hd. Cap	5	1	9
2411-53	Bearing - Rod End L.H.	20	1	1	322-4	Screw - Cap Hex. Hd.	31	10	2
2412-24	Clamp - Hose	17	10	6	322-4	Screw - Cap Hex. Hd.	32	23	1
2412-36	Clamp - Hose	9	4	6	322-4	Screw - Cap Hex. Hd.	18	24	4
2412-41	Clamp - R	12	38	1	322-4	Screw - Hex. Washer Hd.	21	4	2
2412-71	Clamp - R	5	37	1	322-7	Capscrew - Hex. Nd.	20	10	2
2412-81	Clamp - R	16	25	2	322-9	Screw - Cap Hex. Hd.	4	9	1
2412-92	Clamp - Hose	12	10	2	322-12	Screw - Cap Hex. Hd.	3	11	1

*Not Illustrated

TORO PART NUMBER INDEX (Cont.)

3317-897

Part No.	Description	Pg. No.	Ref. No.	Qty.	Part No.	Description	Pg. No.	Ref. No.	Qty.
322-17	Capscrew - Hex. Hd.	20	24	1	3253-4	Washer - Lock	31	11	2
322-17	Screw - Cap Hex. Hd.	21	2	1	3253-4	Washer - Lock	7	14	2
322-17	Screw - Cap Hex. Hd.	25	13	6	3253-4	Washer - Lock	15	16	2
322-26	Screw - Cap Hex. Hd.	32	36	1	3253-4	Washer - Lock	9	16	4
322-43	Screw - Cap Hex. Hd.	15	21	4	3253-4	Washer - Lock	32	22	2
322-43	Screw - Cap Hex. Hd.	5	23	1	3253-4	Washer - Lock	12	28	2
322-45	Screw - Hex. Hd. Cap	5	13	1	3253-5	Washer - Lock	8	12	1
322-46	Screw - Cap Hex. Hd.	12	33	2	3253-6	Washer - Lock	12	49	1
323-6	Screw - Cap Hex. Hd.	26	2	2	3253-21	Washer - Lock	9	18	4
323-7	Screw - Cap Hex. Hd.	32	8	1	3253-21	Washer - Lock	15	19	2
323-7	Screw - Cap Hex. Hd.	31	28	2	3253-27	Washer - Lock	12	23	1
323-8	Screw - Cap Hex. Hd.	12	42	4	3254-1	Washer - Lock	15	12	2
323-9	Capscrew - Hex. Hd.	9	19	4	3254-5	Washer - Lock	10	11	1
323-11	Screw - Cap Hex. Hd.	18	46	4	3254-9	Washer - Lock	20	20	2
323-13	Screw - Cap Hex. Hd.	26	46	1	3254-9	Washer - Lock Internal	26	5	2
323-15	Screw - Cap Hex. Hd.	25	5	2	3255-2	Washer - Lock	4	31	1
323-23	Screw - Cap Hex. Hd.	26	20	2	3255-7	Washer - Lock	12	4	1
324-7	Screw - Cap Hex. Hd.	12	48	1	3255-7	Washer - Lock	20	22	3
325-4	Screw - Cap Hex. Hd.	25	19	4	3255-8	Screw - Hex. Flange Hd.	5	33	4
325-6	Screw - Cap Hex. Hd.	4	1	1	3255-8	Washer - Lock E.T.L.W.	6	58	1
325-7	Screw - Cap Hex Hd.	17	14	2	3255-9	Washer - Lock	26	3	2
325-11	Screw - Cap Hex. Hd.	4	25	4	3256-1	Washer - Flat	15	5	2
325-11	Screw - Cap Hex. Hd.	21	28	8	3256-1	Washer - Flat	10	7	4
325-18	Screw - Cap Hex Hd.	17	23	1	3256-4	Washer - Flat	26	25	4
3210-7	Capscrew - Hex. Hd.	20	18	1	3256-6	Washer - Flat	31	15	2
3213-9	Capscrew - Hex. Hd.	12	24	1	3256-6	Washer - Flat	32	27	1
3217-6	Nut - Hex.	15	3	2	3256-16	Washer - Flat	21	12	8
3217-6	Nut - Hex.	12	29	2	3256-21	Washer - Flat	1	7	2
3217-7	Nut - Hex.	2	39	2	3256-22	Washer - Flat	1	1	8
3217-29	Nut - Lock	20	21	2	3256-22	Washer - Flat	16	9	2
3218-1	Nut - Hex.	12	44	1	3256-22	Washer - Flat	29	23	9
3218-5	Nut - Hex. Jam	10	32	1	3256-23	Washer	27	51	6
3218-6	Nut - Jam	33	9	1	3256-23	Washer - Flat	5	4	9
3218-13	Nut - Lock	15	17	2	3256-23	Washer - Flat	25	14	6
3218-19	Nut - Hex.	10	8	2	3256-23	Washer - Flat	9	15	4
3219-14	Nut - Hex.	34	3	1	3256-23	Washer - Flat	1	16	1
3219-14	Nut - Hex.	15	13	2	3256-23	Washer - Flat	26	16	1
3220-2	Nut - Jam	21	33	2	3256-24	Washer	29	4	1
3220-2	Nut - Jam R.H.	20	16	1	3256-24	Washer	18	50	1
3220-3	Nut - Jam	3	12	2	3256-24	Washer - Flat	25	8	1
3220-3	Nut - Jam	4	27	2	3256-24	Washer - Flat	15	18	2
3220-5	Nut - Jam	3	14	1	3256-24	Washer - Flat	26	18	4
3220-12	Nut - Jam	4	29	1	3256-25	Washer - Flat	12	50	1
3220-20	Nut - Jam L.H.	20	2	1	3256-26	Washer - Flat	3	21	2
3229-1	Bolt - Carriage	31	1	2	3256-26	Washer - Flat	10	35	1
3229-1	Bolt - Carriage	1	10	2	3256-45	Washer - Flat	32	10	4
3229-22	Bolt - Carriage	2	43	1	3256-45	Washer - Flat	31	19	4
3229-22	Bolt - Carriage	6	54	2	3256-53	Washer - Flat	20	33	2
3230-15	Bolt - Carriage	5	9	2	3256-54	Washer - Flat	33	4	1
3234-4	Screw - Cap Hex. Hd.	12	3	3	3256-57	Washer - Flat	32	38	1
3234-4	Screw - Cap Hex. Hd.	12	14	1	3256-70	Washer - Flat	5	12	7
3234-4	Screw - Hex Washer Hd.	17	11	2	3256-70	Washer - Flat	15	22	4
3234-13	Screw - Hex. Flange Hd.	5	3	6	3256-70	Washer - Flat	12	32	2
3234-14	Screw - Hex. Hd. Cap	5	5	2	3256-74	Washer - Flat	20	13	8
3234-17	Screw - Cap Hex. Hd.	1	15	6	3257-15	Key - Square	24	11	1
3234-17	Screw - Hex. Flange Hd.	5	27	2	3257-32	Key - Woodruff	18	7	1
3234-17	Screw - Cap Hex. Hd.	1	2	10	3257-32	Key - Woodruff	17	21	1
3234-32	Screw - Cap Hex. Hd.	32	28	1	3272-4	Pin - Cotter	26	13	1
3234-32	Screw - Hex. Flange Hd.	31	14	2	3272-4	Pin - Cotter	26	27	1
3242-4	Screw - Set	25	21	8	3272-4	Pin - Cotter	5	36	2
3245-9	Screw - Set	17	18	1	3272-6	Pin - Cotter	32	19	1
3245-35	Screw - Set	25	24	2	3272-6	Pin - Cotter	21	31	4
3249-3	Screw - Rd. Hd. Machine	20	6	2	3272-6	Pin - Cotter	26	43	1
3249-5	Screw - Round Hd.	26	6	2	3272-6	Pin - Cotter	17	48	1
3250-50	Screw - Pan Hd.	2	36	2	3272-7	Pin - Cotter	21	43	1
3253-3	Washer - Lock	12	2	3	3272-10	Pin - Cotter	31	22	4
3253-3	Washer - Lock	17	20	3	3272-10	Pin - Cotter	32	33	2
3253-3	Washer - Lock	1	21	3	3272-11	Pin - Cotter	32	4	1
3253-4	Washer - Lock	21	3	2	3272-11	Pin - Cotter	26	32	5

*Not Illustrated

TORO PART NUMBER INDEX (Cont.)

Part No.	Description	Pg. Ref. No. No. Qty.	Part No.	Description	Pg. Ref. No. No. Qty.
3272-13	Pin - Cotter	32 13 2	32121-24	Pin - Roll	20 3 1
3272-13	Pin - Cotter	31 27 2	32121-34	Pin - Roll	17 34 1
3290-196	Nut - Retainer	5 38 3	32121-38	Pin - Spring	8 15 1
3290-199	Nut - Speed	15 11 1	32121-79	Pin - Roll	21 39 2
3290-199	Nut - Speed	5 40 3	32121-91	Pin - Coiled Spring	18 38 3
3290-224	Washer - Lock Pyramidal	2 40 2	32121-124	Pin - Roll	26 28 1
3290-378	Tie - Cable	4 7 1	32122-2	Screw - Round Hd.	34 2 1
3290-378	Tie - Cable	12 17 1	32122-14	Screw - Truss Hd.	5 49 2
3290-378	Tie - Cable	20 34 1	32128-14	Flange Locknut	23 9 1
3290-379	Cable Tie	17 42 4	32128-20	Nut - Flange	2 46 3
3290-379	Tie - Cable	9 1 2	32128-20	Nut - Lock	22 48 2
3290-379	Tie - Cable	16 19 2	32128-25	Nut - Flange Lock	25 15 6
3290-410	Tie - Push Mount	12 39 1	32128-25	Nut - Flange Lock	5 15 17
3290-470	Screw - Machine	9 12 2	32128-25	Nut - Flange Lock	1 17 5
3296-4	Nut - Lock	26 15 1	32128-25	Nut - Lock	12 35 2
3296-6	Nut - Lock	13 9 3	32128-25	Nut - Lock	15 23 2
3296-6	Nut - Lock	17 15 1	32128-32	Nut - Hex. Flange	16 8 2
3296-16	Nut - Lock	1 3 5	32128-33	Nut - Flange Lock	31 4 2
3296-16	Nut - Lock	29 18 3	32128-33	Nut - Flange Lock	6 55 2
3296-16	Nut - Lock	20 25 2	32128-43	Nut - Flange Lock	5 35 4
3296-23	Nut - Flange Lock	4 23 4	32128-44	Nut - Flange	5 8 2
3296-23	Nut - Lock	25 12 4	32144-18	Screw - Cap Hex. Hd.	10 24 2
3296-23	Nut - Lock	17 35 3	32144-22	Screw - Hex. Hd. Self-Tap	1 18 4
3296-23	Nut - Lock	21 42 8	32144-69	Screw - Self Tapping	16 27 2
3296-28	Nut - Lock	3 22 2	32148-8	Insert - Threaded	6 57 1
3296-29	Nut - Flange Lock	3 7 1	32149-2	Nut - Hex.	15 15 2
3296-29	Nut - Lock	4 5 1	32151-46	Ring - Retaining	18 13 2
3296-29	Nut - Lock	5 6 2	32153-3	Nut - Lock	20 15 2
3296-29	Nut - Lock	20 19 1	3333-975	Tie - Cable	12 12 1
3296-39	Nut - Lock	25 1 2	340-1	Fitting - Straight	16 14 1
3296-39	Nut - Lock	32 15 1	340-4	Fitting - Hydraulic Straight	7 15 1
3296-39	Nut - Lock	26 26 5	340-5	Fitting	23 4 1
3296-39	Nut - Lock	31 31 2	340-77	Fitting - Hydraulic 90°	26 47 1
3296-39	Nut - Lock	12 40 4	340-87	Fitting - Hydraulic 45°	26 39 1
3296-39	Nut Lock	29 3 1	340-88	Fitting - Straight	29 15 1
3296-42	Nut - Lock	21 11 8	340-89	Fitting - Hydraulic 45°	21 8 4
3296-42	Nut - Lock	10 21 4	340-92	Fitting	17 46 1
3296-42	Nut - Lock	4 33 1	340-92	Fitting - Straight	16 4 1
3296-42	Nut - Lock	6 56 2	340-96	Fitting - 45° Elbow	16 7 2
3296-56	Nut - Lock	12 7 2	340-97	Fitting - 90° Elbow	29 17 1
3296-56	Nut - Lock	27 50 1	340-98	Fitting - 90° Elbow	17 3 1
3296-59	Nut - Lock	25 7 1	340-98	Fitting - Hydraulic 90°	7 8 1
3296-59	Nut - Lock	32 9 2	340-99	Fitting	23 7 1
3296-59	Nut - Lock	31 18 2	340-99	Fitting - 90° Elbow	29 21 1
3298-8	Screw - Set	10 25 1	340-99	Fitting - Hydraulic 90°	16 16 1
32103-12	Nut - Wing	15 4 2	340-102	Fitting - Tee	17 31 2
32104-6	Screw - Cap Hex. Hd.	31 32 2	340-102	T-Fitting	17 37 1
32104-6	Screw - Cap Hex. Hd.	32 35 1	340-103	Fitting - Hydraulic 45°	22 45 1
32104-77	Screw - Hex. Hd. Self-Tap	1 8 2	340-104	Fitting - Male/Female Tee	16 21 1
32104-82	Screw - Hex. Hd. Self-Tap	2 34 4	340-109	Fitting - Hydraulic Tee	7 11 1
32108-101	Screw - Flathead	15 9 1	340-109	Fitting - Male Tee	16 3 1
32120-11	Ring - Retaining	18 36 1	340-140	Fitting - Hydraulic Tee	22 * 1
32120-15	Ring - Retaining	18 34 1	340-140	Fitting - Tee	17 41 1
32121-6	Pin - Roll	20 17 1	340-141	Fitting - Hydraulic Straight	4 12 2
32121-6	Pin - Roll	5 43 1	340-168	Fitting - 90° Male Elbow	16 31 2
32121-9	Pin - Roll	33 13 1	353-954	Fitting - 90° Elbow	17 33 1
32121-10	Pin - Roll	3 9 1	354-23	Ball	8 5 1
32121-23	Pin - Roll	33 1 1			

*Not Illustrated

PRODUCT CHANGES

In an effort to make improvements available to TORO owners as quickly as possible, minor changes are incorporated into Toro's products from time to time that do not become immediately shown in the Parts Catalog. If such a change has been made in your unit, which is not reflected in your manual, see your TORO Distributor or his Authorized TORO Service Dealer for information and part numbers.

IDENTIFICATION AND ORDERING

MODEL AND SERIAL NUMBERS

The Reelmaster 216 has two identification numbers; a model number and a serial number. The two numbers are stamped on a plate which is located on the main frame under the seat. In any correspondence concerning the Reelmaster 216, supply model and serial numbers to assure that correct information and replacement parts are obtained.

To order replacement parts from an Authorized TORO Service Dealer, supply the following information:

1. Model and serial number of the Reelmaster 216.
2. Part number, description, and the quantity of part(s) desired.

NOTE: Do not order by reference number if a parts catalog is being used; use the PART NUMBER.

TABLE OF CONTENTS

Description	Page	Description	Page
Hood Assembly	1-2	Traction Controls Assembly	20
Frame Assembly	3	Front Wheel Assembly	21-22
Rear Wheel Assembly	4	Right Front Wheel Plumbing Assembly	23
Seat Support Assembly	5-6	Hydraulic Drive Motor No. 66-5291	24
Rear Wheel Drive Valve Assembly	7	Jackshaft Assembly	25
Two Position Valve No. 92-3196	8	Cutting Unit Lift Assembly	26-27
Fuel Tank Assembly	9	Hydraulic Cylinder No. 76-0020	28
Instrument Panel Assembly	10	Cutting Unit Lift Control Valve Assembly	29
Electrical Schematic	11	Control Valve No. 43-1950	30
Engine & Clutch Assembly	12	Front Cutting Unit Lift Arm Assembly	31
Electric Clutch Assembly No. 70-8020	13	Rear Cutting Unit Lift Arm Assembly	32
Hydraulic Schematic	14	Belt Tensioner Assembly No. 83-7900	33
Hydraulic Tank & Battery Assembly	15	Special Tools	34
Hydraulic Oil Cooler Assembly	16	Engine Kohler Model No. M1605	
Hydraulic Drive Assembly	17	Spec. No. 711563	35-40
Hydraulic Pump Assembly No. 92-9023	18-19	TORO Part Number Index	41-46

