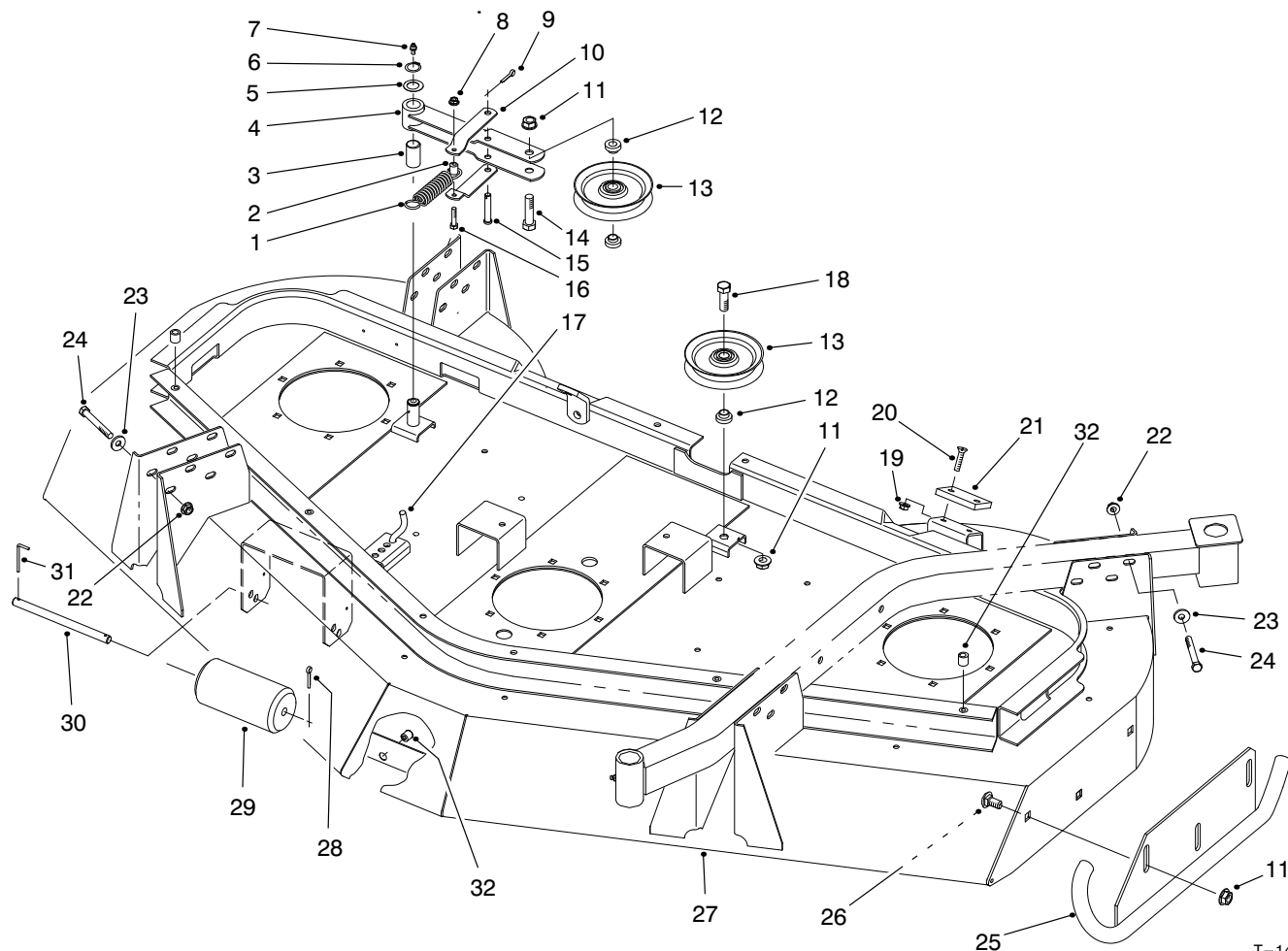




MODEL NO. 30716-60511 & UP MODEL NO. 30716TE-60511 & UP	PARTS CATALOG
GUARDIAN® 72" RECYCLER®	



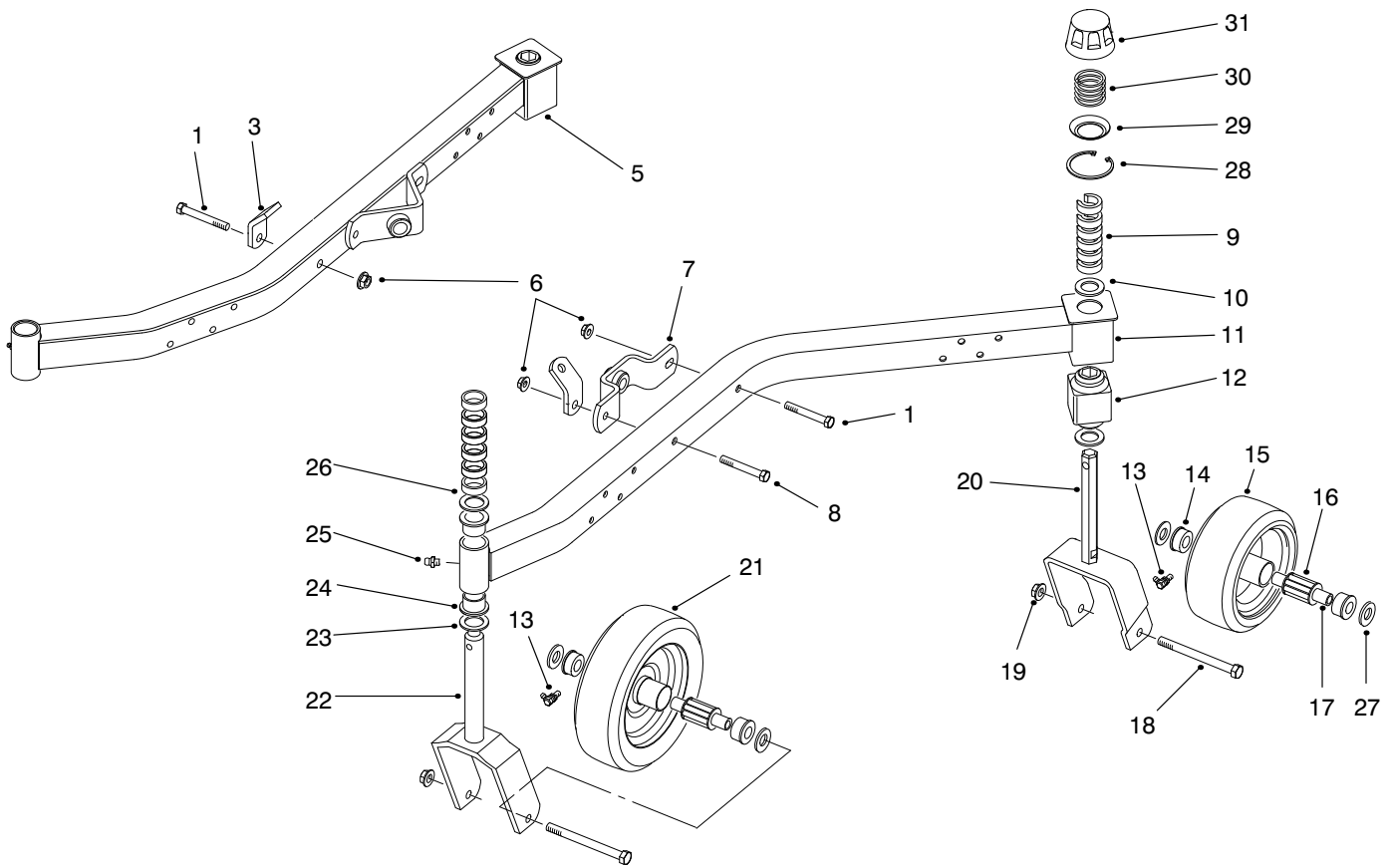
T-1432A

HOUSING, IDLERS & SKIDS ASSEMBLY

Ref. No.	Part No.	Description	No. Used
1	85-6390	Spring	1
2	85-5930	Tube - Spring	1
3	256-188	Bushing	1
4	85-5900	Arm - Idler (Incl. Ref. #3)	1
5	3-6498	Washer	1
6	32120-72	Ring - Retaining	1
7	302-2	Fitting - Grease	1
8	32128-32	Nut - Flange Head	1
9	3290-467	Pin - Cotter	1
10	85-5920	Bracket - Idler Arm	2
11	32128-49	Nut - Flange Head	8
12	69-6960	Spacer - Idler	3
13	63-1540	Pulley - Idler	2
14	325-8	Screw - HH	1
15	283-82	Pin - Clevis	1
16	321-8	Screw - Cap Hex. Hd.	1
17	85-5940	Rod - Spring	1

Ref. No.	Part No.	Description	No. Used
18	325-6	Screw - HH	1
19	32128-25	Nut - Flange Head	2
20	32108-103	Screw - Flat Head	2
21	69-9290	Pad - Bumper	1
22	32128-19	Nut - Flange Head	16
23	5-0838	Washer	16
24	323-14	Screw - HH	16
25	85-5980	Skid - LH	1
*	85-5950	Skid - RH	1
26	3233-9	Bolt - Carriage	6
27	85-5420	Asm. - Housing (Incl. Ref. #32) (Ref. #1-3 & #9 on page 3)	1
28	3272-11	Pin - Cotter	3
29	36-1740	Roller	3
30	40-6400	Shaft - Roller	3
31	57-0690	Pin - Special	3
32	32148-7	Nut - Insert	12

*Not Illustrated



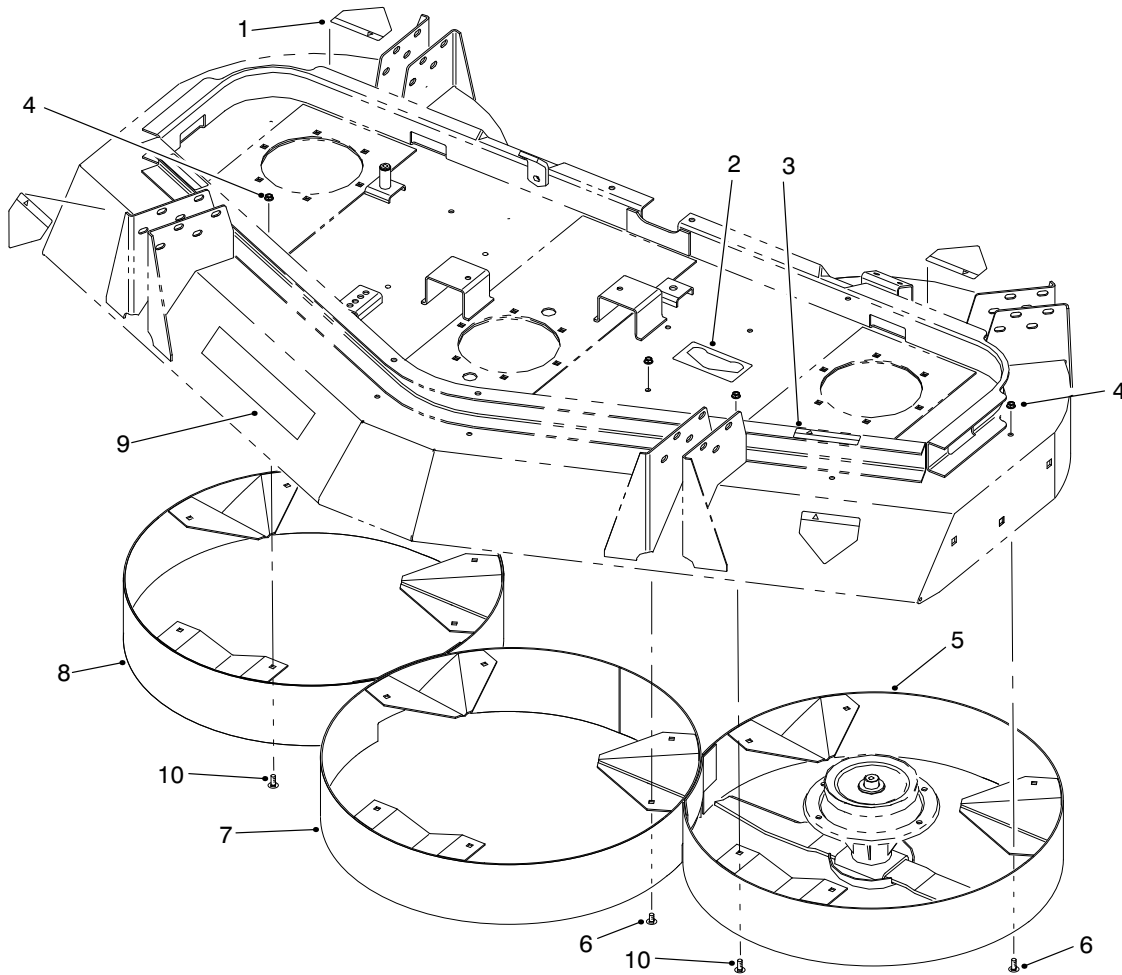
T-1433A

CASTOR WHEELS & ARM ASSEMBLY

Ref. No.	Part No.	Description	No. Used
1	324-12	Screw - HH	2
3	85-5830	Bracket - Chain	2
5	94-5430	Asm. - Castor Arm, RH (Incl. Ref. #12, 24 & 25)	1
6	32128-42	Nut - Flange Head	3
7	85-5810	Mount - Ball Joint, LH	1
8	324-13	Screw - HH	1
9	92-8866	Spacer - .50"	12
10	92-1765	Washer	4
11	94-5429	Asm. - Castor Arm, LH (Incl. Ref. #12, 24 & 25)	1
12	93-8471	Bushing - Rubber	2
13	302-40	Fitting - Grease	4
14	62-5580	Bearing	8
15	85-5760	Asm. - Wheel 8" (Incl. Ref. #13-14 & 16)	2
16	83-4740	Bearing - Roller	4
17	62-4340	Spanner	4
18	325-22	Screw - HH	4
19	32128-23	Nut - Flange Head	4
20	94-5383	Fork - Castor, Rear	2
21	92-1655	Asm. - Wheel 10"	

Ref. No.	Part No.	Description	No. Used
		(Incl. Ref.#13-14 & 16)	2
22	94-5381	Fork - Castor, Front	2
23	3-6781	Washer	4
24	94-1291	Bushing - Special	4
25	302-5	Fitting - Grease	2
26	63-0070	Spacer - .50"	12
*	27-1040	Spacer - .25"	24
27	3256-6	Washer - Flat	8
28	92-5581	Ring - Retaining, Internal	4
29	92-5583	Washer - Cap	4
30	92-5584	Spring - Compression	4
31	92-8861	Cap - Height-of-Cut	4
*	12-1509	Pneumatic Wheel/Tire Asm. (Optional)	2
*	95-3082	Front Castor Wheel Asm. (Incl. Ref. #17-19, 21 & 27)	1
*	95-3083	Rear Castor Wheel Asm. (Incl. Ref. #15, 17-19 & 27)	1
*	95-3085	Castor Wheel Set (4 Wheels) (Incl. Ref. #15, 17-19, 21 & 27)	1

*Not Illustrated

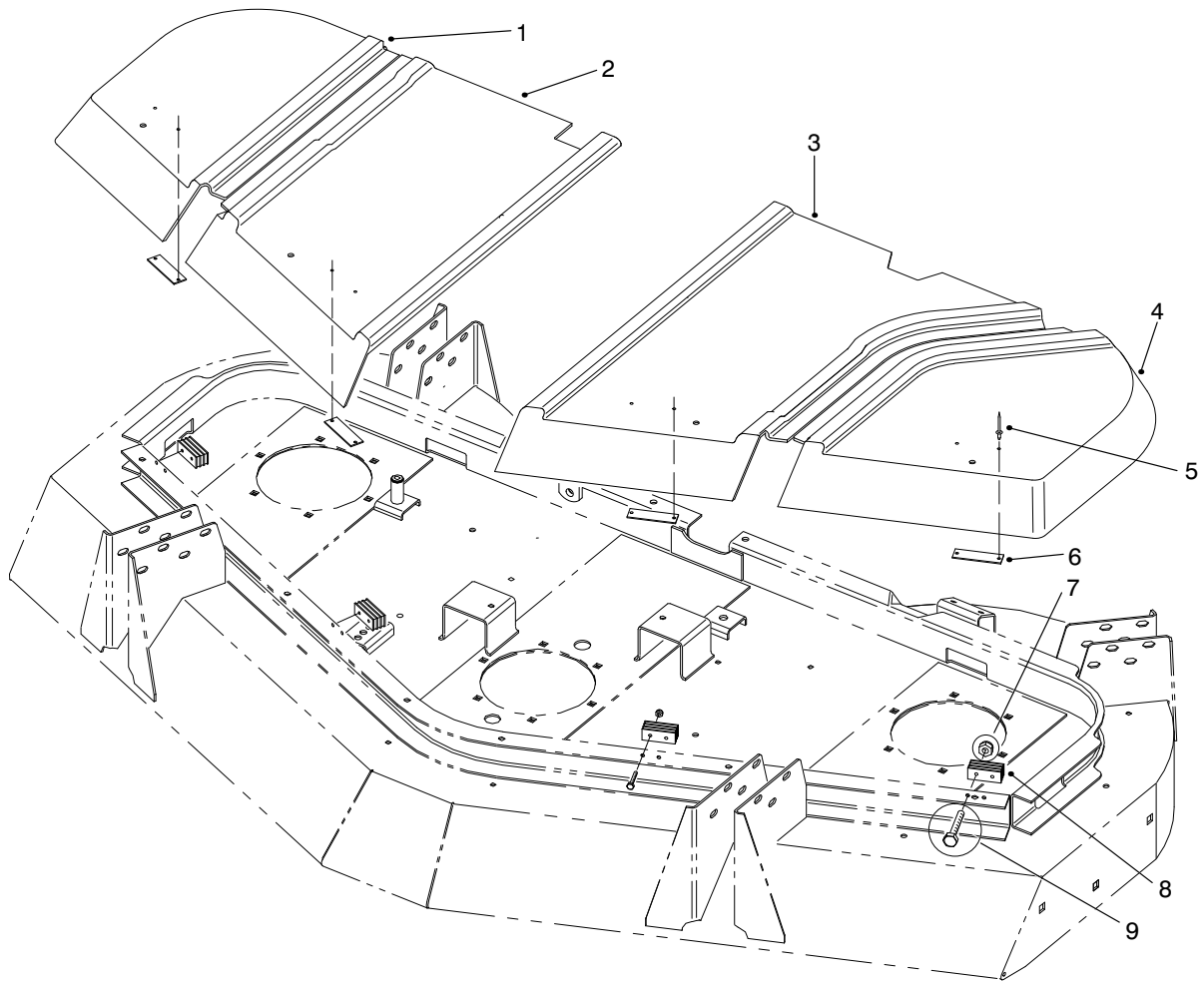


T-1434A

CHAMBERS, KICKERS & DECALS

Ref. No.	Part No.	Description	No. Used
1	43-8480	Decal - Danger	4
2	85-6120	Decal - Belt Routing	1
3	85-6410	Decal - Danger	4
4	32128-25	Nut - Flange Head	18
5	85-6460	Chamber - LH	1

Ref. No.	Part No.	Description	No. Used
6	3230-18	Bolt - Carriage	16
7	85-6480	Chamber - Center	1
8	85-6470	Chamber - RH	1
9	85-6430	Decal - Guardian	1
10	3230-23	Bolt - Carriage	2

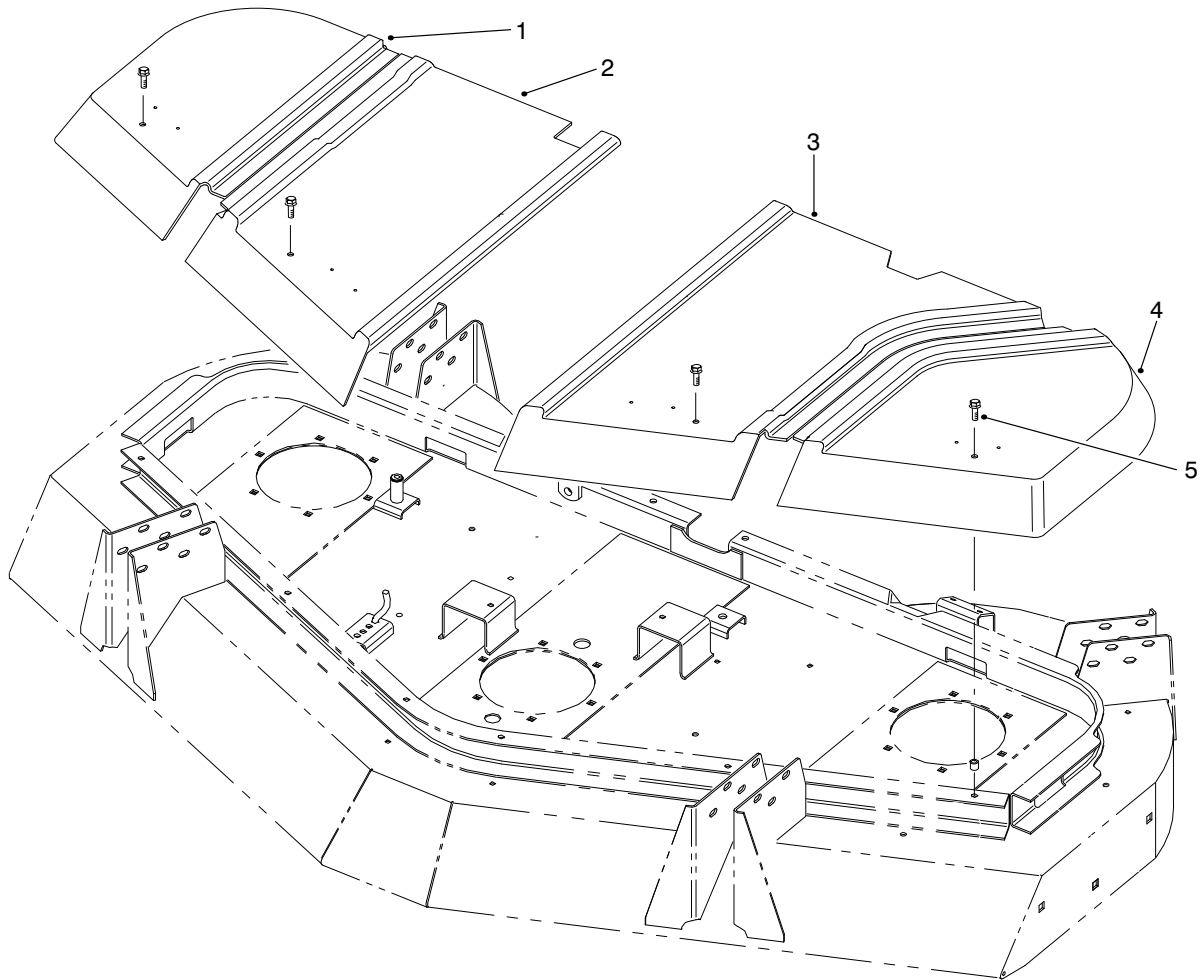


T-1435

COVER ASSEMBLY

Ref. No.	Part No.	Description	No. Used
1	85-6080	Cover - RH	1
2	85-6070	Cover - RH Center	1
3	85-6060	Cover - LH Center	1
4	85-6050	Cover - LH	1
5	3269-25	Rivet - Pop	8

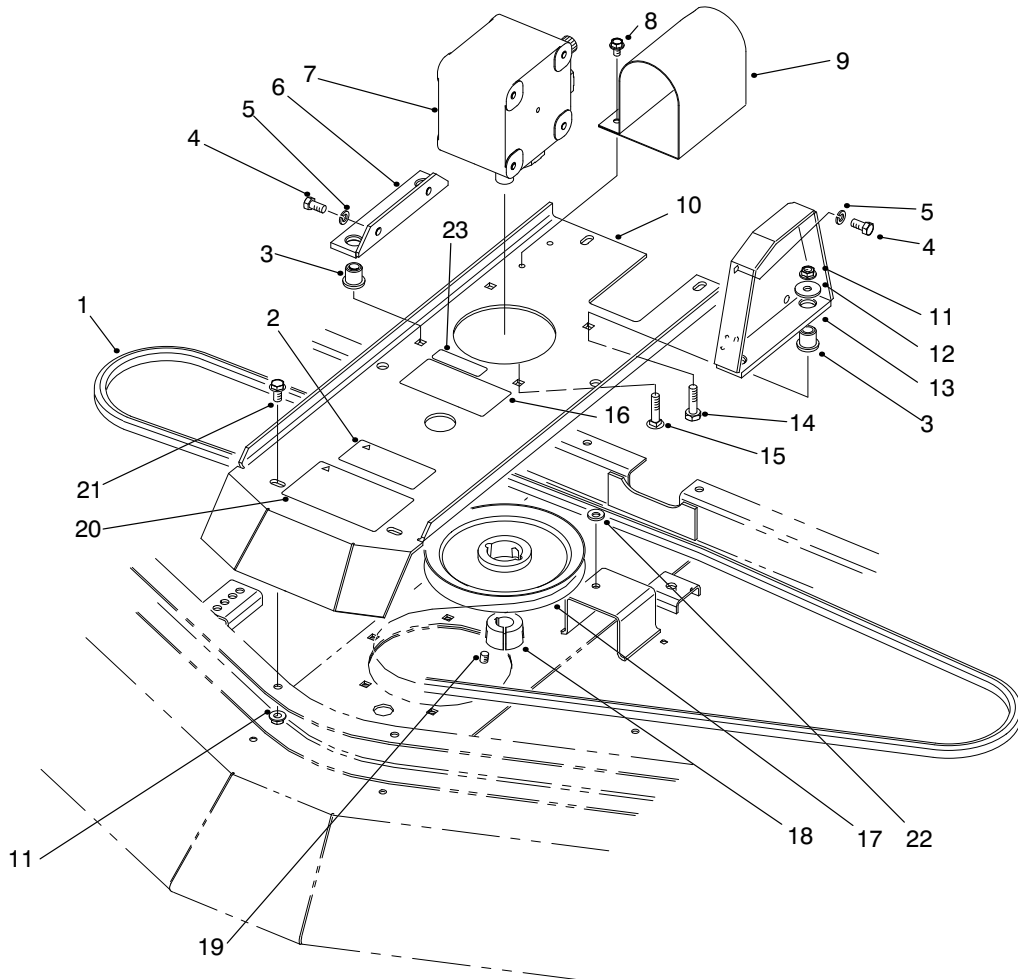
Ref. No.	Part No.	Description	No. Used
6	69-6870	Plate - Magnet	4
7	3296-2	Nut - Lock	8
8	69-6260	Magnet	4
9	32105-1	Screw - Hex. Hd. Machine	8



T-2644-1

COVER ASSEMBLY (EUROPE)

Ref. No.	Part No.	Description	No. Used	Ref. No.	Part No.	Description	No. Used
1	85-6080	Cover - RH	1	4	85-6050	Cover - LH	1
2	85-6070	Cover - RH Center	1	5	3234-5	Screw - Flange Head	4
3	85-6060	Cover - LH Center	1				

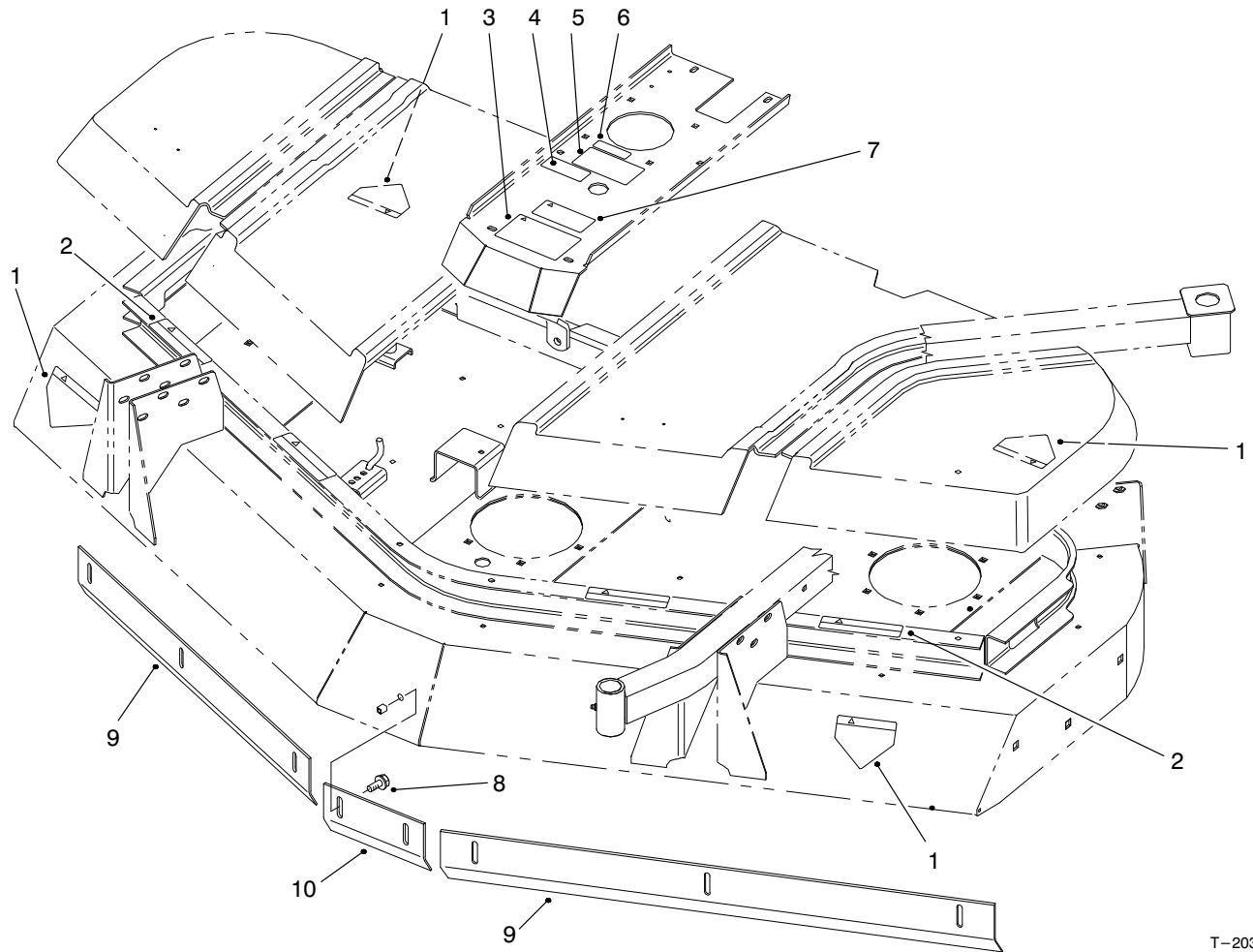


T-1436A

GEAR BOX & MOUNT ASSEMBLY

Ref. No.	Part No.	Description	No. Used
1	93-8457	Belt - Drive	1
2	68-8340	Decal - Torque	1
3	63-9750	Mount	4
4	323-4	Screw - HH	5
5	3253-21	Washer - Lock	5
6	68-8560	Bracket - RH, Gear Box	1
7	68-6810	Asm. - Gear Box	1
8	32104-82	Screw - Flange Head	2
9	93-9839	Shroud - Universal	1
10	94-9162	Plate - Mount, Gear Box (Incl. Ref. #2,16 & 20)	1
11	32128-21	Nut - Flange Head	10
12	63-8410	Washer	4
13	85-6330	Bracket - Gear Box	1

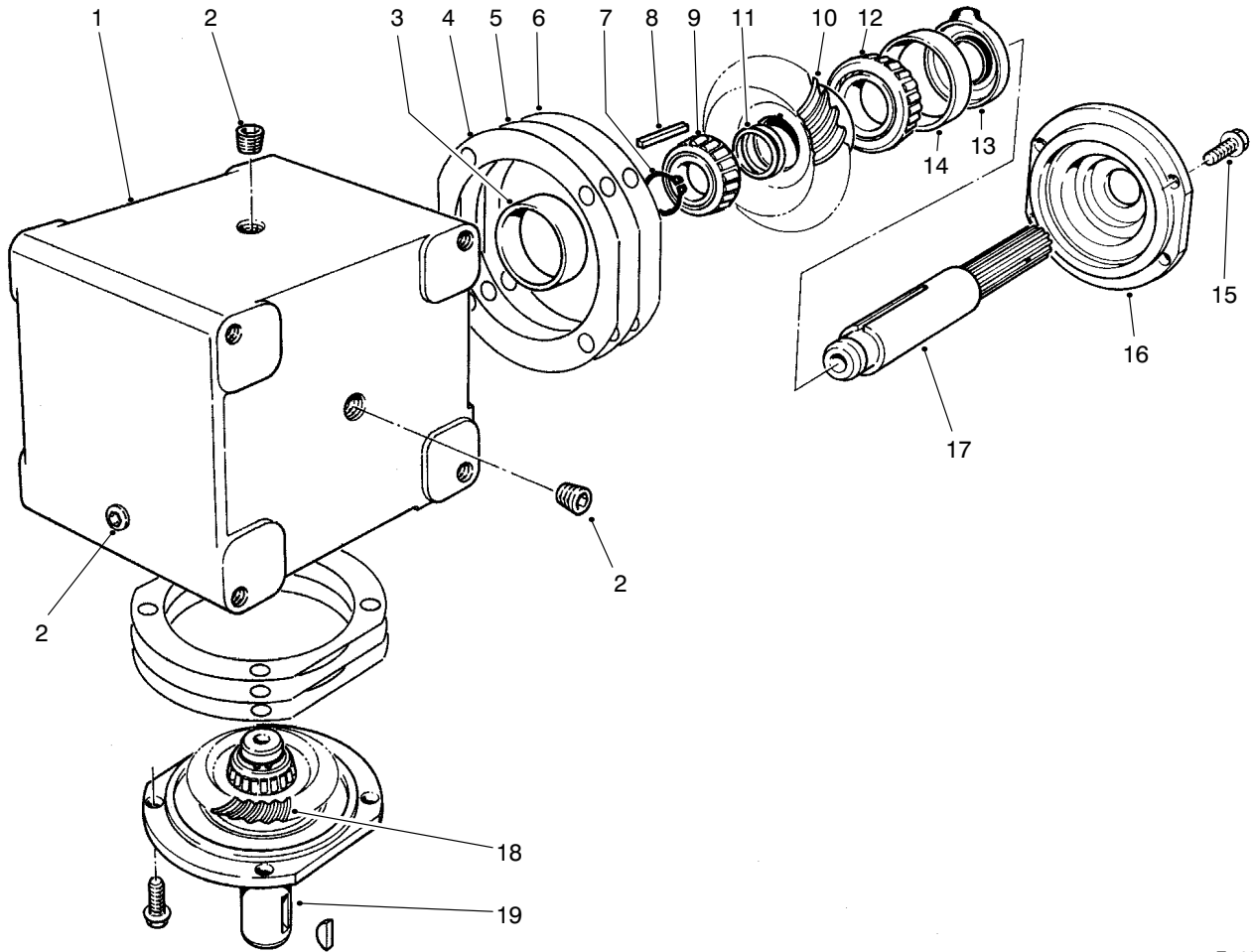
Ref. No.	Part No.	Description	No. Used
14	3234-18	Screw - Flange Head	1
15	3231-26	Bolt - Carriage	3
16	92-4089	Decal - Height-Of-Cut	1
17	85-5860	Pulley	1
18	23-1640	Bushing - Taperlock (Incl. Ref. #19)	1
19	3247-4	Screw - Set	2
20	92-7847	Decal - Warning	1
21	3234-11	Screw - Flange Head	6
22	3256-24	Washer - Flat	A/R
23	70-2560	Decal - Lube	1
*	95-3088	Kit - Blade & Belt (Incl. Ref. #1)	1



T-2037-2

DECAL & BAFFLE ASSEMBLY (Europe)

Ref. No.	Part No.	Description	No. Used	Ref. No.	Part No.	Description	No. Used
1	93-7815	Decal - Danger	4	7	93-7818	Decal - Torque	1
2	93-7814	Decal - Danger	4	8	3234-5	Screw - Flange Head	8
3	93-7809	Decal - Warning	1	9	93-4390	Baffle - Side	2
5	93-7826	Decal - Height-of-Cut	1	10	93-4391	Baffle - Center	1
6	93-6697	Decal - Lube	1				

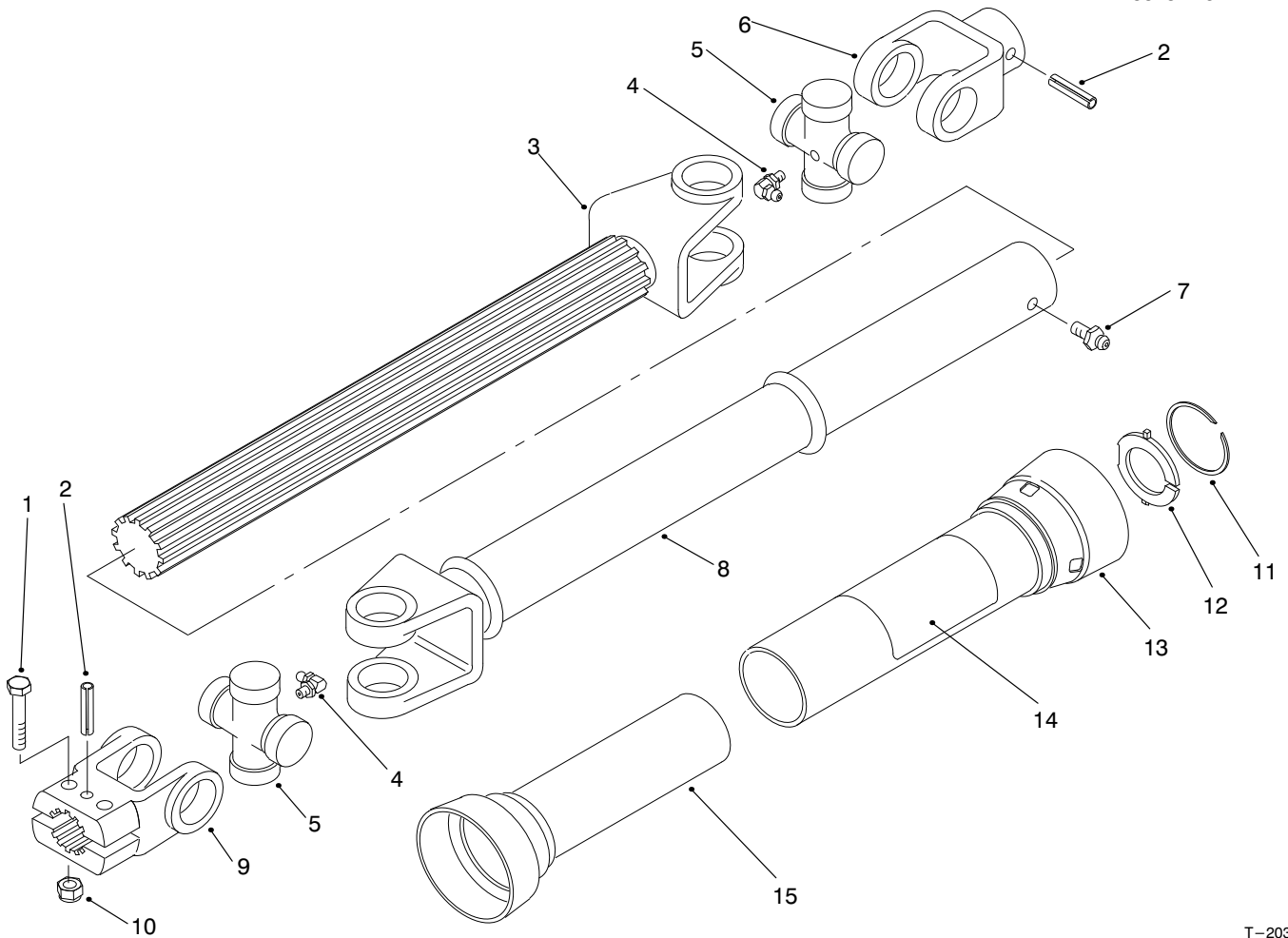


T-0977-2

GEAR BOX ASSEMBLY NO. 68-6810

Ref. No.	Part No.	Description	No. Used
1	68-7030	Housing	1
2	62-3490	Plug - Pipe (Solid)	4
3	62-3360	Cup - Bearing	2
4	62-3420	Gasket (.015 in.)	A/R
5	62-3430	Gasket (.005 in.)	A/R
6	62-3440	Gasket (.003 in.)	A/R
7	68-7070	Ring - Retaining	2
8	62-3380	Key	2
9	62-3370	Cone - Bearing	2
10	68-7080	Gear	1

Ref. No.	Part No.	Description	No. Used
11	72-9370	Shim (.020 in.)	2
12	254-94	Cone - Bearing	2
13	62-3400	Seal	2
14	62-3340	Cup - Bearing	2
15	62-3310	Screw - HH	8
16	62-3410	Cap	2
17	68-7040	Shaft	1
18	68-7060	Gear	1
19	68-7050	Shaft	1
20	3257-5	Key - Woodruff	1

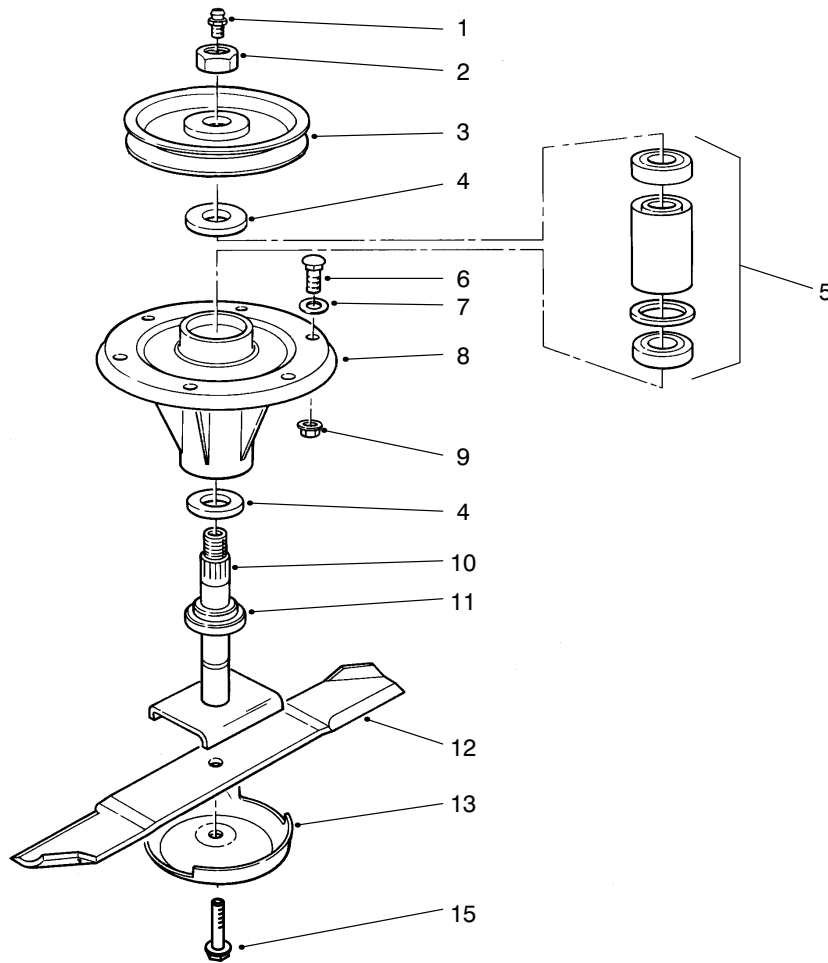


T-2038

DRIVE SHAFT ASSEMBLY

Ref. No.	Part No.	Description	No. Used	Ref. No.	Part No.	Description	No. Used
1	322-9	Screw - HH	2	14	93-7283	Decal - Danger (Europe)	1
2	32121-34	Pin - Roll	2	15	93-9960	Asm. - Guard, Inner (Europe) (Incl. Ref. #11-12)	1
3	93-9957	Slip Yoke - Shaft	1	*	93-9958	Kit - Repair, Nylon (Europe) (Incl. 2 Each Ref. #11-12)	1
4	62-3820	Fitting - Grease	2	*	93-9995	Asm. - Drive Shaft (Europe) (Incl. Ref. #3-9 & 13-15)	1
5	54-9180	Kit - U-Joint	2	*	93-9962	Asm. Drive Shaft (Without guards) (Incl. Ref. #3-9)	1
6	62-3800	Yoke - End	1				
7	302-58	Fitting - Grease	1				
8	93-9961	Slip Yoke - Tube	1				
9	54-9040	Yoke - End (Split)	1				
10	3296-29	Nut - Lock	2				
11		Ring - Retaining	2				
12		Bushing - Nylon	2				
13	93-9984	Asm. - Guard, Outer (Europe) (Incl. Ref. #11-12 & 14)	1				

*Not Illustrated



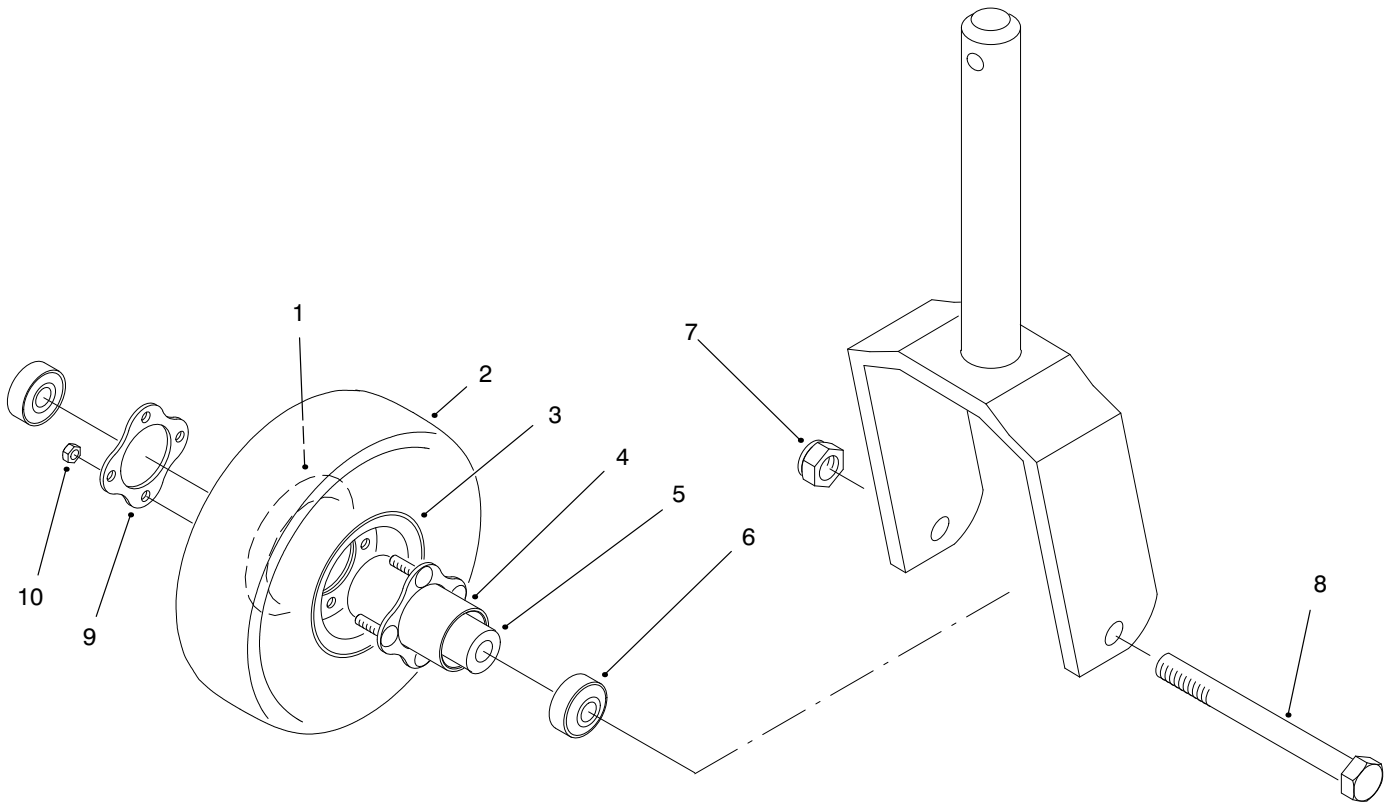
T-1438A

SPINDLE ASSEMBLY

Ref. No.	Part No.	Description	No. Used
1	302-2	Fitting - Grease	3
2	3296-49	Nut - Lock	3
3	85-6030	Pulley - Spindle	3
4	253-154	Seal - Oil	6
5	71-2530	Assembly - Bearing	3
6	3231-27	Bolt - Carriage	18
7	3256-24	Washer - Flat	A/R
8	69-1530	Housing - Spindle	3
9	32128-21	Nut - Flange Head	18

Ref. No.	Part No.	Description	No. Used
10	85-6010	Shaft - Spindle	3
11	92-9800	Spacer - Spindle Shaft	3
12	85-6040	Blade - 25.18"	3
13	72-9361	Cup - Anti-Scalp	3
15	92-5816	Screw - Blade	3
*	95-3088	Kit - Blade & Belt (Incl. Ref. #12)	1
*	95-3091	Spindle Assembly (Incl. Ref. #1-11 & 13)	1

Quantities shown are for three deck spindles.



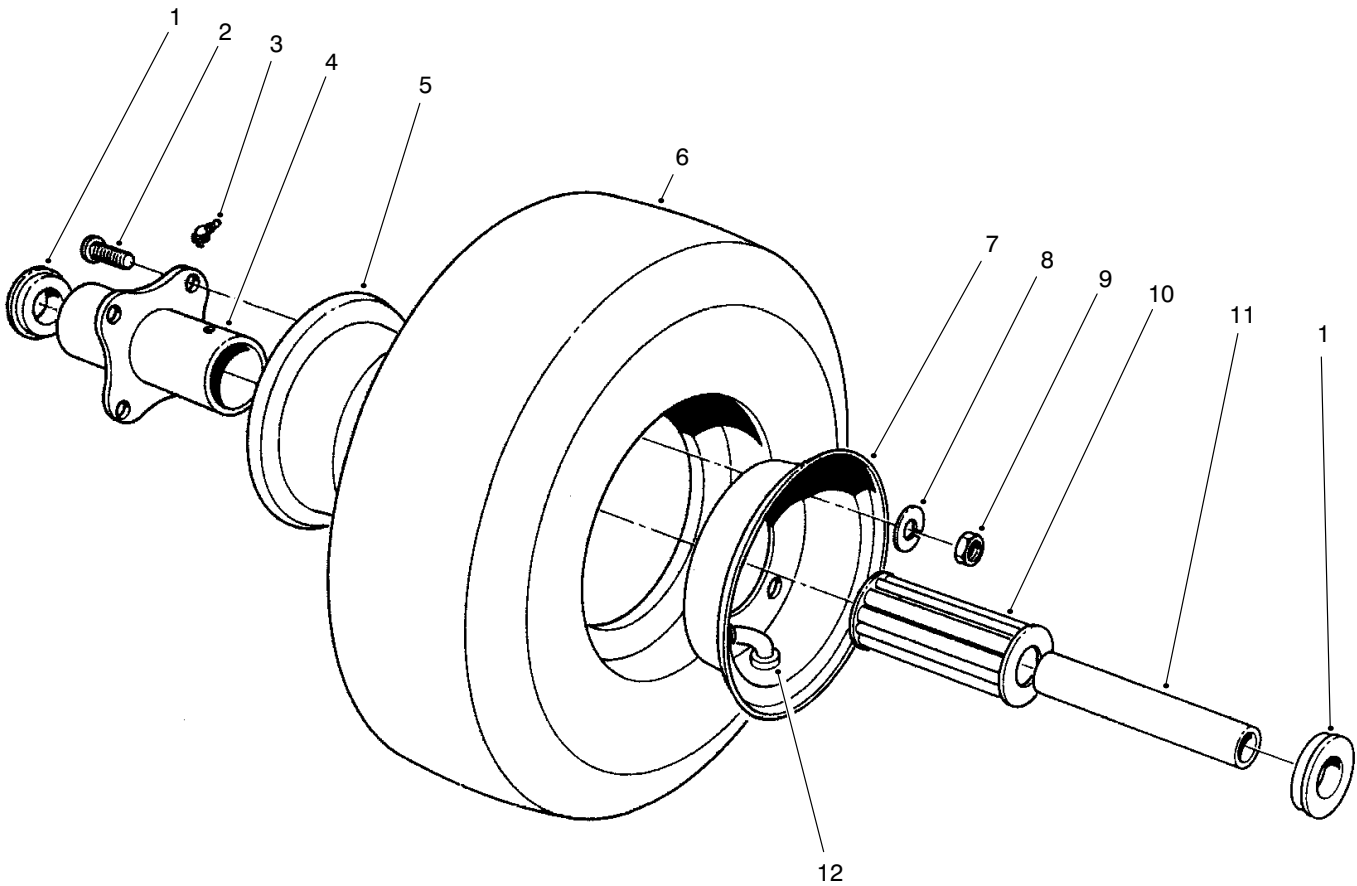
T-2653-1

FOAM FILLED CASTOR WHEEL (Optional)

Ref. No.	Part No.	Description	No. Used
1	95-2741	Rim - Wheel	2
2	93-9939	Tire - 8"	2
*	93-4243	Tire - 10"	2
3	93-4239	Rim - Wheel	2
4	93-5980	Hub	2
5	93-4241	Spacer - Bearing	2
6	93-4237	Bearing - Castor	2
7	3296-53	Nut - Lock	2

Ref. No.	Part No.	Description	No. Used
8	327-24	Screw - Cap Hex. Hd.	2
9	93-4242	Plate	2
10	32128-16	Nut - Hex. Lock	8
*	93-5974	8" Foam Filled Wheel Asm. (Incl. Ref. #1-6 & 9-10)	2
*	93-5973	10" Foam Filled Wheel Asm. (Incl. Ref. #1-6 & 9-10)	2

*Not Illustrated



T-0448

PNEUMATIC TIRE & WHEEL ASSEMBLY (Optional)

Ref. No.	Part No.	Description	No. Used
1	54-8930	Retainer	2
2	54-8890	Bolt - Wheel	4
3	302-10	Fitting - Grease	1
4	54-8920	Hub - Centered	1
5	54-8910	Wheel Half - Female	1
6	54-8960	Tire	1
7	54-8900	Wheel Half - Male	1
8	3253-4	Washer - Lock	4

Ref. No.	Part No.	Description	No. Used
9	3217-6	Nut - Hex.	4
10	54-8940	Bearing - Roller (Open Cage)	1
11	55-7080	Bushing - Spanner	1
12	54-8950	Tube w/Valve	1
*	12-1509	Asm. - Wheel, Pneumatic (Incl. Ref. #1-12)	1

*Not Illustrated

TORO PART NUMBER INDEX

3318-157 REV B

Part No.	Description	Pg. No.	Ref. No.	Qty.	Part No.	Description	Pg. No.	Ref. No.	Qty.
3-6498	Washer	1	5	1	85-5860	Pulley	6	17	1
3-6781	Washer	2	23	4	85-5900	Arm - Idler	1	4	1
5-0838	Washer	1	23	16	85-5920	Bracket - Idler Arm	1	10	2
12-1509	Asm. - Wheel, Pneumatic	12	*	1	85-5930	Tube - Spring	1	2	1
12-1509	Pneumatic Wheel/Tire Asm.	2	*	2	85-5940	Rod - Spring	1	17	1
23-1640	Bushing - Taperlock	6	18	1	85-5950	Skid - RH	1	*	1
27-1040	Spacer - .25	2	*	24	85-5980	Skid - LH	1	25	1
36-1740	Roller	1	29	3	85-6010	Shaft - Spindle	10	10	3
40-6400	Shaft - Roller	1	30	3	85-6030	Pulley - Spindle	10	3	3
43-8480	Decal - Danger	3	1	4	85-6040	Blade - 25.18	10	12	3
54-8890	Bolt - Wheel	12	2	4	85-6050	Cover - LH	4	4	1
54-8900	Wheel Half - Male	12	7	1	85-6050	Cover - LH	5	4	1
54-8910	Wheel Half - Female	12	5	1	85-6060	Cover - LH Center	4	3	1
54-8920	Hub - Centered	12	4	1	85-6060	Cover - LH Center	5	3	1
54-8930	Retainer	12	1	2	85-6070	Cover - RH Center	4	2	1
54-8940	Bearing - Roller	12	10	1	85-6070	Cover - RH Center	5	2	1
54-8950	Tube w/Valve	12	12	1	85-6080	Cover - RH	4	1	1
54-8960	Tire	12	6	1	85-6080	Cover - RH	5	1	1
54-9040	Yoke - End (Split)	9	9	1	85-6120	Decal - Belt Routing	3	2	1
54-9180	Kit - U-Joint	9	5	2	85-6330	Bracket - Gear Box	6	13	1
55-7080	Bushing - Spanner	12	11	1	85-6390	Spring	1	1	1
57-0690	Pin - Special	1	31	3	85-6410	Decal - Danger	3	3	4
62-3310	Screw - HH	8	15	8	85-6430	Decal - Guardian	3	9	1
62-3340	Cup - Bearing	8	14	2	85-6460	Chamber - LH	3	5	1
62-3360	Cup - Bearing	8	3	2	85-6470	Chamber - RH	3	8	1
62-3370	Cone - Bearing	8	9	2	85-6480	Chamber - Center	3	7	1
62-3380	Key	8	8	2	92-1655	Asm. - Wheel 10	2	21	2
62-3400	Seal	8	13	2	92-1765	Washer	2	10	4
62-3410	Cap	8	16	2	92-4089	Decal - Height-Of-Cut	6	16	1
62-3420	Gasket (.015 in.)	8	4	A/R	92-5581	Ring - Retaining, Internal	2	28	4
62-3430	Gasket (.005 in.)	8	5	A/R	92-5583	Washer - Cap	2	29	4
62-3440	Gasket (.003 in.)	8	6	A/R	92-5584	Spring - Compression	2	30	4
62-3490	Plug - Pipe (Solid)	8	2	4	92-5816	Screw - Blade	10	15	3
62-3800	Yoke - End	9	6	1	92-7847	Decal - Warning	6	20	1
62-3820	Fitting - Grease	9	4	2	92-8861	Cap - Height-of-Cut	2	31	4
62-4340	Spanner	2	17	4	92-8866	Spacer - .50	2	9	12
62-5580	Bearing	2	14	8	92-9800	Spacer - Spindle Shaft	10	11	3
63-0070	Spacer - .50	2	26	12	93-4237	Bearing - Castor	11	6	2
63-1540	Pulley - Idler	1	13	2	93-4239	Rim - Wheel	11	3	2
63-8410	Washer	6	12	4	93-4241	Spacer - Bearing	11	5	2
63-9750	Mount	6	3	4	93-4242	Plate	11	9	2
68-6810	Asm. - Gear Box	6	7	1	93-4243	Tire - 10	11	*	2
68-7030	Housing	8	1	1	93-4390	Baffle - Side	7	9	2
68-7040	Shaft	8	17	1	93-4391	Baffle - Center	7	10	1
68-7050	Shaft	8	19	1	93-5973	10 Foam Filled Wheel Asm.	11	*	2
68-7060	Gear	8	18	1	93-5974	8 Foam Filled Wheel Asm.	11	*	2
68-7070	Ring - Retaining	8	7	2	93-5980	Hub	11	4	2
68-7080	Gear	8	10	1	93-6697	Decal - Lube	7	6	1
68-8340	Decal - Torque	6	2	1	93-7283	Decal - Danger (Europe)	9	14	1
68-8560	Bracket - RH, Gear Box	6	6	1	93-7809	Decal - Warning	7	3	1
69-1530	Housing - Spindle	10	8	3	93-7814	Decal - Danger	7	2	4
69-6260	Magnet	4	8	4	93-7815	Decal - Danger	7	1	4
69-6870	Plate - Magnet	4	6	4	93-7818	Decal - Torque	7	7	1
69-6960	Spacer - Idler	1	12	3	93-7826	Decal - Height-of-Cut	7	5	1
69-9290	Pad - Bumper	1	21	1	93-8457	Belt - Drive	6	1	1
70-2560	Decal - Lube	6	23	1	93-8471	Bushing - Rubber	2	12	2
71-2530	Assembly - Bearing	10	5	3	93-9839	Shroud - Universal	6	9	1
72-9361	Cup - Anti-Scalp	10	13	3	93-9939	Tire - 8	11	2	2
72-9370	Shim (.020 in.)	8	11	2	93-9957	Slip Yoke - Shaft	9	3	1
83-4740	Bearing - Roller	2	16	4	93-9958	Kit - Repair, Nylon (Europe)	9	*	1
85-5420	Asm. - Housing	1	27	1	93-9960	Asm. - Guard, Inner	9	15	1
85-5760	Asm. - Wheel 8	2	15	2	93-9961	Slip Yoke - Tube	9	8	1
85-5810	Mount - Ball Joint, LH	2	7	1	93-9962	Asm. Drive Shaft	9	*	1
85-5830	Bracket - Chain	2	3	2	93-9984	Asm. - Guard, Outer	9	13	1

*Not Illustrated

TORO PART NUMBER INDEX (Cont.)

Part No.	Description	Pg. Ref. No. No. Qty.	Part No.	Description	Pg. Ref. No. No. Qty.
93-9995	Asm. - Drive Shaft (Europe)	9 * 1	3231-26	Bolt - Carriage	6 15 3
94-1291	Bushing - Special	2 24 4	3231-27	Bolt - Carriage	10 6 18
94-5381	Fork - Castor, Front	2 22 2	3233-9	Bolt - Carriage	1 26 6
94-5383	Fork - Castor, Rear	2 20 2	3234-5	Screw - Flange Head	5 5 4
94-5429	Asm. - Castor Arm, LH	2 11 1	3234-5	Screw - Flange Head	7 8 8
94-5430	Asm. - Castor Arm, RH	2 5 1	3234-11	Screw - Flange Head	6 21 6
94-9162	Plate - Mount, Gear Box	6 10 1	3234-18	Screw - Flange Head	6 14 1
95-2741	Rim - Wheel	11 1 2	3247-4	Screw - Set	6 19 2
95-3082	Front Castor Wheel Asm.	2 * 1	3253-4	Washer - Lock	12 8 4
95-3083	Rear Castor Wheel Asm.	2 * 1	3253-21	Washer - Lock	6 5 5
95-3085	Castor Wheel Set	2 * 1	3256-6	Washer - Flat	2 27 8
95-3088	Kit - Blade & Belt	10 * 1	3256-24	Washer - Flat	10 7 A/R
95-3088	Kit - Blade & Belt	6 * 1	3256-24	Washer - Flat	6 22 A/R
95-3091	Spindle Assembly	10 * 1	3257-5	Key - Woodruff	8 20 1
253-154	Seal - Oil	10 4 6	3269-25	Rivet - Pop	4 5 8
254-94	Cone - Bearing	8 12 2	3272-11	Pin - Cotter	1 28 3
256-188	Bushing	1 3 1	3290-467	Pin - Cotter	1 9 1
283-82	Pin - Clevis	1 15 1	3296-2	Nut - Lock	4 7 8
302-2	Fitting - Grease	10 1 3	3296-29	Nut - Lock	9 10 2
302-2	Fitting - Grease	1 7 1	3296-49	Nut - Lock	10 2 3
302-5	Fitting - Grease	2 25 2	3296-53	Nut - Lock	11 7 2
302-10	Fitting - Grease	12 3 1	32104-82	Screw - Flange Head	6 8 2
302-40	Fitting - Grease	2 13 4	32105-1	Screw - Hex. Hd. Machine	4 9 8
302-58	Fitting - Grease	9 7 1	32108-103	Screw - Flat Head	1 20 2
321-8	Screw - Cap Hex. Hd.	1 16 1	32120-72	Ring - Retaining	1 6 1
322-9	Screw - HH	9 1 2	32121-34	Pin - Roll	9 2 2
323-4	Screw - HH	6 4 5	32128-16	Nut - Hex. Lock	11 10 8
323-14	Screw - HH	1 24 16	32128-19	Nut - Flange Head	1 22 16
324-12	Screw - HH	2 1 2	32128-21	Nut - Flange Head	10 9 18
324-13	Screw - HH	2 8 1	32128-21	Nut - Flange Head	6 11 10
325-6	Screw - HH	1 18 1	32128-23	Nut - Flange Head	2 19 4
325-8	Screw - HH	1 14 1	32128-25	Nut - Flange Head	3 4 18
325-22	Screw - HH	2 18 4	32128-25	Nut - Flange Head	1 19 2
327-24	Screw - Cap Hex. Hd.	11 8 2	32128-32	Nut - Flange Head	1 8 1
3217-6	Nut - Hex.	12 9 4	32128-42	Nut - Flange Head	2 6 3
3230-18	Bolt - Carriage	3 6 16	32128-49	Nut - Flange Head	1 11 8
3230-23	Bolt - Carriage	3 10 2	32148-7	Nut - Insert	1 32 12

*Not Illustrated

PRODUCT CHANGES

In an effort to make improvements available to TORO owners as quickly as possible, minor changes are incorporated into Toro's products from time to time that do not become immediately shown in the Parts Catalog. If such a change has been made in your unit, which is not reflected in your manual, see your TORO Distributor or his Authorized TORO Service Dealer for information and part numbers.

IDENTIFICATION AND ORDERING

MODEL AND SERIAL NUMBERS

The Guardian® 72" Recycler® has two identification numbers; a model number and a serial number. The two numbers are stamped on a plate which is located on the right hand side of the rear deck channel. In any correspondence concerning the Guardian® 72" Recycler, supply model and serial numbers to assure that correct information and replacement parts are obtained.

To order replacement parts from an Authorized TORO Service Dealer, supply the following information:

1. Model and serial number of the Guardian® 72" Recycler.
2. Part number, description, and the quantity of part(s) desired.

NOTE: Do not order by reference number if a parts catalog is being used; use the PART NUMBER.

TABLE OF CONTENTS

Description	Page	Description	Page
Housing, Idler & Skids Assembly	1	Gear Box Assembly No. 68–6810	8
Castor Wheels & Arm Assembly	2	Drive Shaft Assembly	9
Chambers, Kickers & Decals	3	Spindle Assembly	10
Cover Assembly	4	10" Segmented Front Caster Wheel (Optional) ...	11
Cover Assembly (Europe)	5	Pneumatic Tire & Wheel Assembly (Optional)	12
Gear Box & Mount Assembly	6	Numerical Parts Index	13–14
Decal & Baffle Assembly (Europe)	7		

