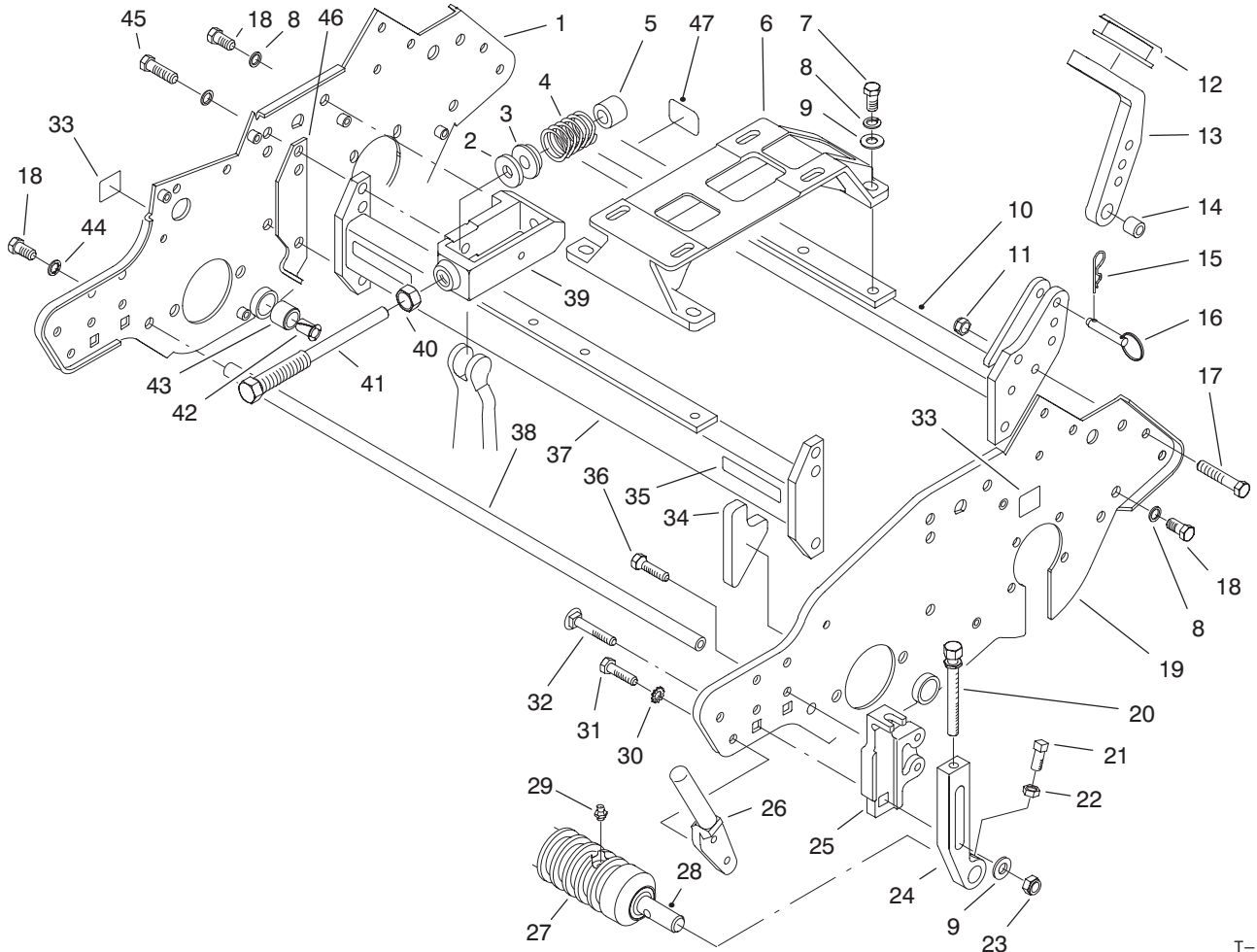




MODEL NO. 04052-60001 & UP	<b>PARTS CATALOG</b>
<b>GREENSMASTER® 1000</b> Traction Unit & Cutting Unit	



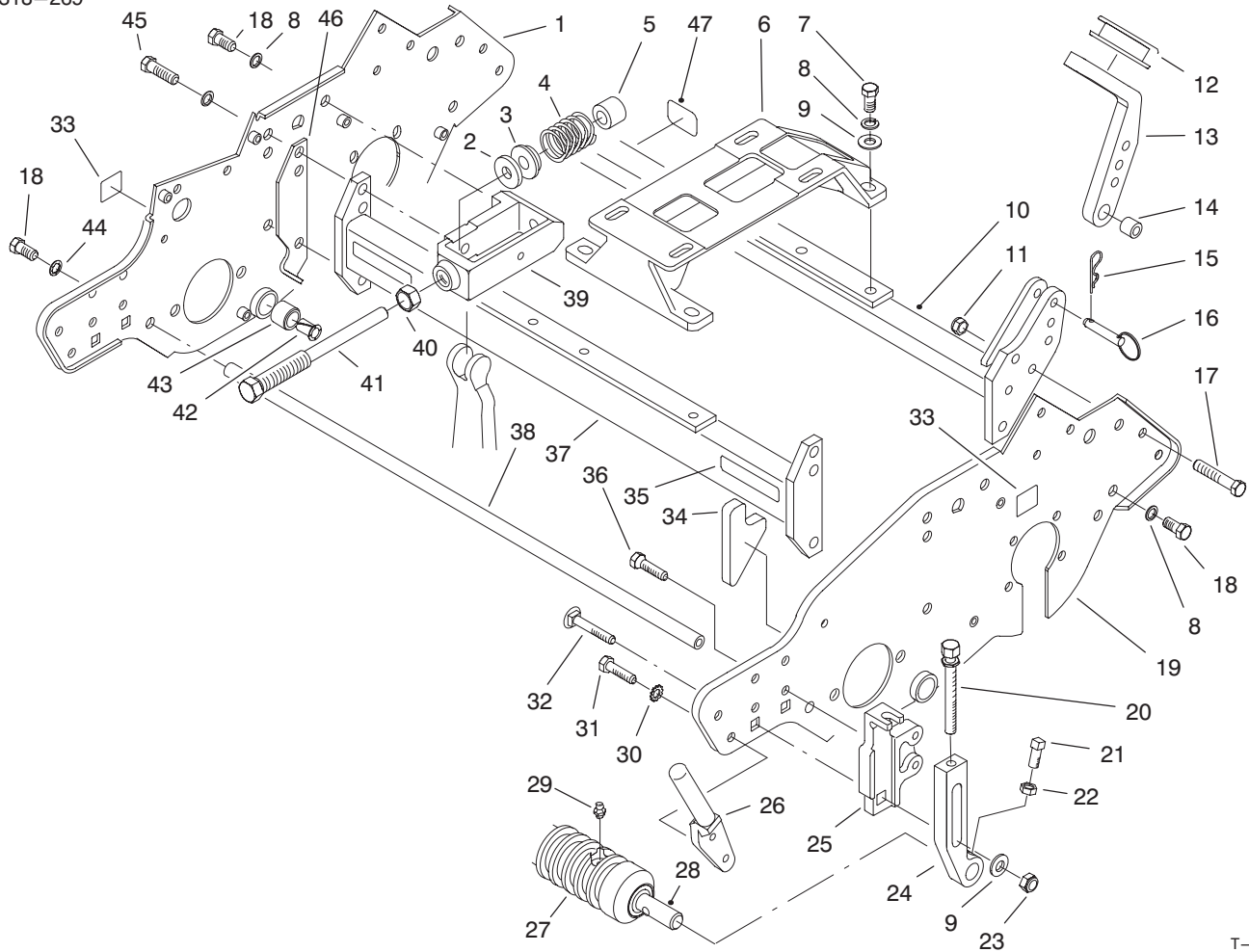
T-1995A

## FRAME ASSEMBLY

Ref. No.	Part No.	Description	No. Used
1	93-6093	Side Plate Assembly RH (Incl. Ref. #33)	1
2	65-8680	Washer - Thrust	2
3	65-6380	Collar - Thrust	2
4	65-6400	Spring - Compression	2
5	65-6360	Support - Spring	2
6	88-7670	Base - Engine	1
7	323-5	Screw - Cap Hex. Hd.	4
8	3253-21	Washer - Spring Lock	16
9	3256-24	Washer - Flat	6
10	93-6025	Rear Frame W.A.	1
11	3296-29	Nut - Lock	2
12	65-7510	Grommet - Handle	2
13	93-6038	Arm - Handle LH	1
*	93-6037	Arm - Handle RH	1
14	93-6024	Bushing - Handle Support	2

Ref. No.	Part No.	Description	No. Used
15	3290-467	Pin - Cotter, Hair	2
16	93-6029	Pin - Ring	2
17	322-9	Screw - Cap Hex. Hd.	2
18	323-4	Screw - Cap Hex. Hd.	12
19	93-6094	Side Plate Assembly LH (Incl. Ref. #33)	1
20	93-6051	Screw - Height of Cut	2
21	3242-4	Screw - Set	2
22	3218-2	Nut - Jam	2
23	3296-39	Nut - Lock	2
24	93-6090	Arm - Height of Cut	2
25	93-6049	Bracket - Height of Cut, LH	1
*	93-6048	Bracket - Height of Cut, RH	1
26	65-8570	Rod - Grass Catcher	2
27	88-6790	Wihle Roller Assembly (Incl. Ref. #28 & 29)	1

\*Not Illustrated



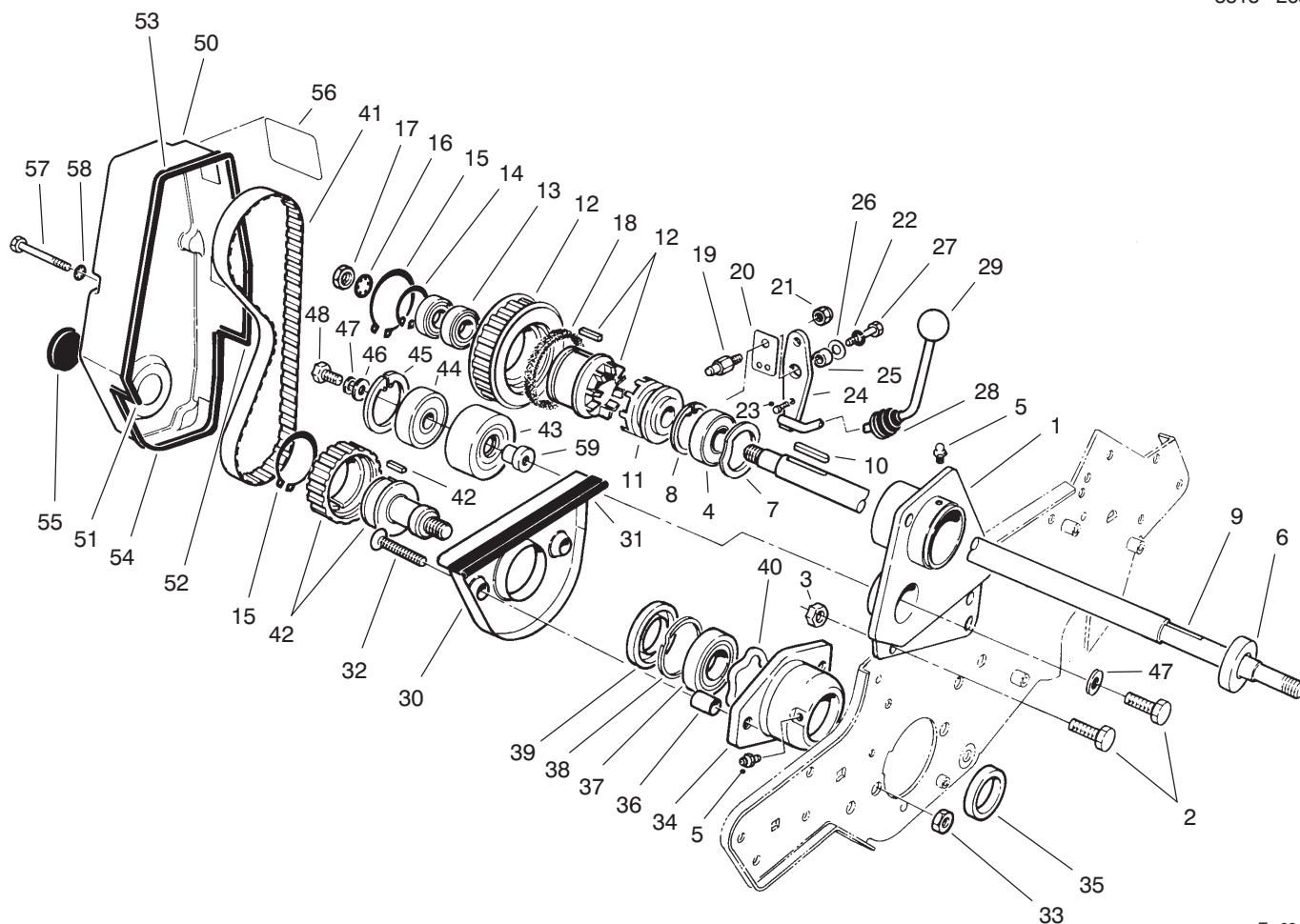
T-1995A

## FRAME ASSEMBLY (Continued)

Ref. No.	Part No.	Description	No. Used
28	52-3180	Bearing	2
29	302-5	Fitting - Grease	2
30	3255-8	Washer - Lock	4
31	322-2	Screw - Cap Hex. Hd.	4
32	3231-5	Screw - Carriage	2
33	88-8950	Decal - Warning	3
33	93-9356	Decal - Warning (Europe)	3
33	93-9389	Decal - Warning (Japan)	3
34	93-6064	Seal - Grass Catcher	1
35	55-4300	Decal - Warning	2
35	93-6696	Decal - Warning (Europe)	2
35	84-2940	Decal - Warning (Japan)	2
36	92-8914	Bolt - Tapered Face	4
37	93-6068	Front Frame Tube Assembly (Incl. Ref. #35)	1

Ref. No.	Part No.	Description	No. Used
38	88-7110	Rod - Frame Support	1
39	65-8670	Adjuster - Frame	2
40	3220-6	Nut - Jam	2
41	65-8690	Screw - Adjusting	2
42	52-2890	Bushing	2
43	63-9510	Bushing Assembly	2
44	3254-6	Washer - Int. Tooth Lock	2
45	323-18	Screw - Cap Hex. Hd.	2
46	88-7100	Spacer - RH	1
*	88-7090	Spacer - LH	1
47	53-4860	Decal - Safety	1
47	93-7842	Decal - Safety (Japan)	1
47	93-7252	Decal - CE Mark (Europe)	1

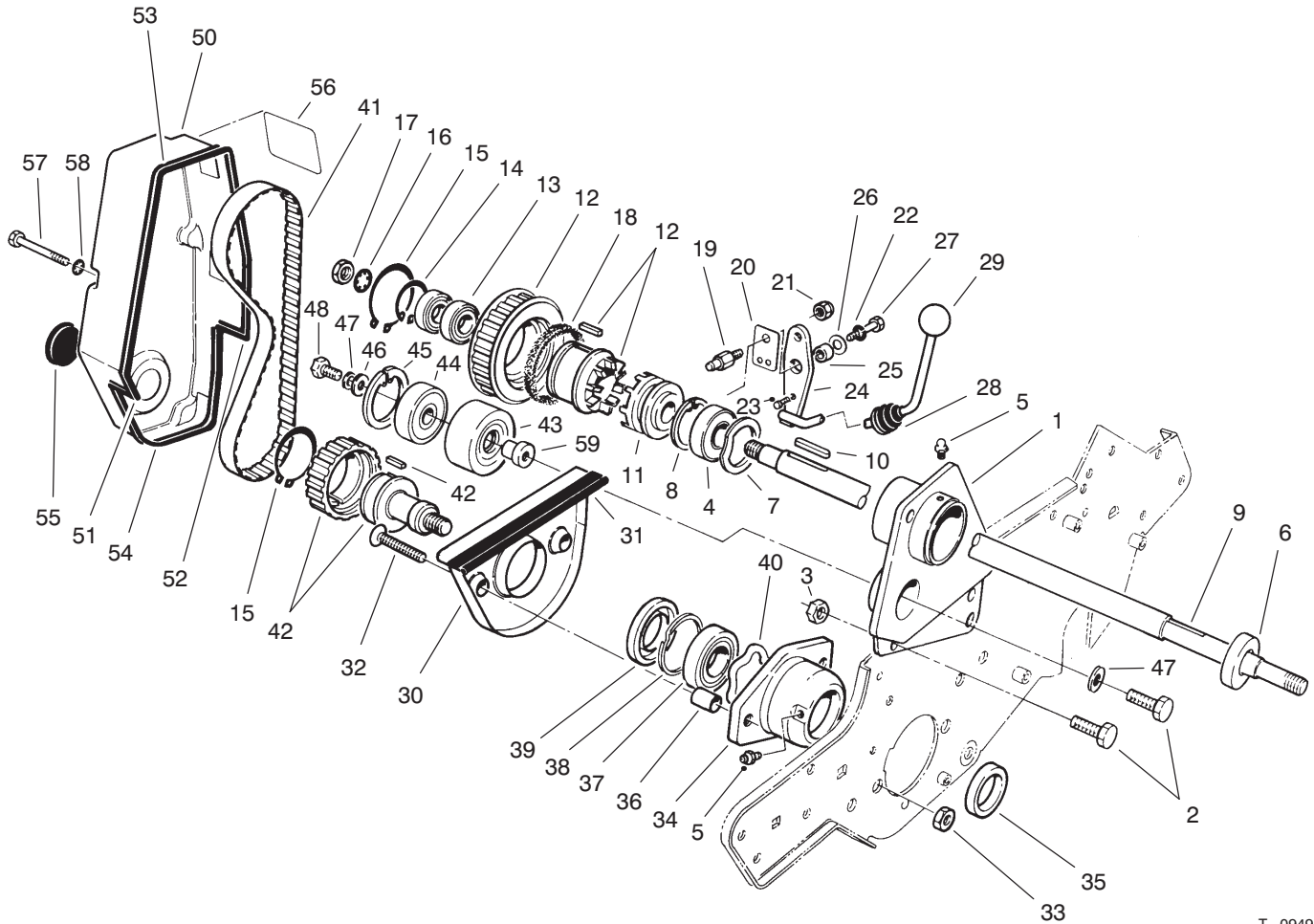
\*Not Illustrated



T-0949

## REEL DRIVE ASSEMBLY

Ref. No.	Part No.	Description	No. Used	Ref. No.	Part No.	Description	No. Used
1	92-8013	Housing - Clutch	1	27	321-4	Screw - Cap Hex. Hd.	1
2	322-5	Screw - Cap Hex. Hd.	3	28	65-8960	Boot - Clutch	1
3	3296-29	Nut - Lock	2	29	233-69	Knob	1
4	251-318	Bearing - Ball	1	30	65-7190	Cover - Groomer Arm	1
5	302-5	Fitting - Grease	2	31	65-7131	Trim - Groomer Arm Cover	1
6	253-118	Seal - Oil	1	32	3289-23	Screw - Flat Hd.	2
7	88-7720	Washer - Wave	1	33	3296-39	Nut	2
8	32120-11	Ring - Retaining	1	34	65-8640	Housing - Bearing	1
9	93-6056	Shaft - Power	1	35	253-96	Seal	1
10	88-7150	Key - Square	2	36	65-8290	Standoff - Cover	2
11	65-6940	Clutch - Jaw Driver	1	37	251-342	Bearing - Self-Aligning	1
12	88-7830	Clutch & Pulley Assembly	1	38	32151-92	Ring - Retaining	1
13	251-336	Bearing - Ball	2	39	253-163	Seal	1
14	32151-89	Ring - Retaining	1	40	3290-485	Washer - Wave	1
15	32151-95	Ring - Retaining	2	41	65-6200	Belt - Reel Drive	1
16	3254-4	Washer - Lock I.T.L.W.	1	42	88-7840	Pulley & Drive Assembly	1
17	3220-5	Nut - Jam	1	43	88-7850	Idler Pulley Assembly (Incl. Ref. #44-48 & 59)	1
18	65-6970	Seal - Felt	1	44	38-7820	Bearing - Ball	1
19	93-9014	Pin - Actuator	1	45	32120-42	Ring - Snap	1
20	65-6290	Spring - Clutch Detent	1	46	88-7200	Washer - Flat	1
21	3296-42	Nut - Lock	1	47	3253-4	Washer - Lock	2
22	3253-3	Washer - Lock	1	48	322-3	Screw - Cap Hex. Hd.	1
23	3259-15	Screw - Drive	1	50	88-7700	Cover - Reel Drive	1
24	88-7170	Lever - Clutch	1	51	88-7770	Strip - Seal Front	1
25	88-7860	Spacer	1	52	88-7780	Strip - Seal Rear	1
26	3290-414	Washer	1				

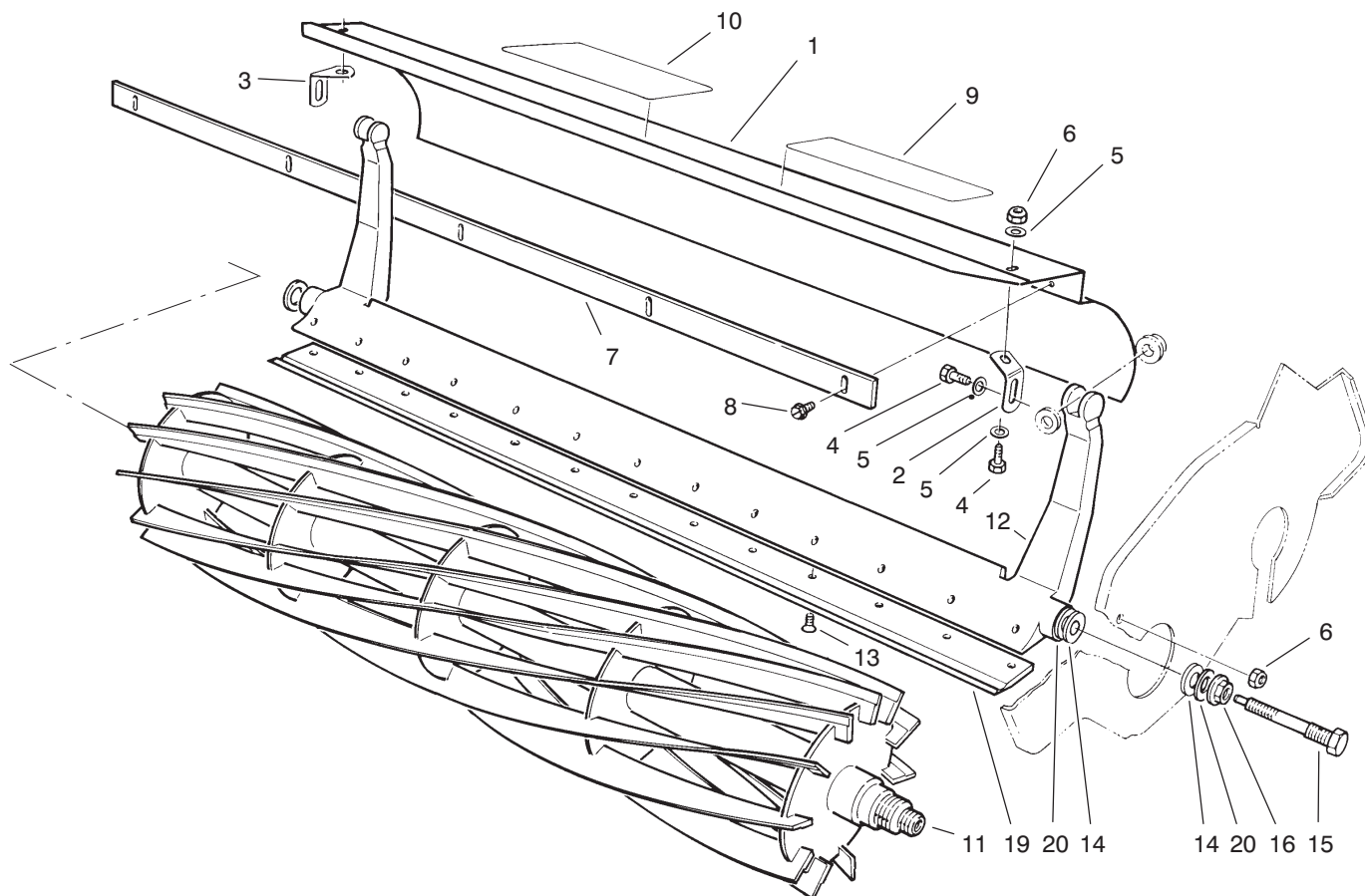


T-0949

## REEL DRIVE ASSEMBLY (Continued)

Ref. No.	Part No.	Description	No. Used
53	88-7790	Strip - Seal Upper	1
54	88-7800	Strip - Seal Lower	1
55	237-160	Plug	1
56	65-7660	Decal - Reel Engagement (Japan)	1
56	93-7346	Decal - Reel Engagement (Europe)	1

Ref. No.	Part No.	Description	No. Used
56	92-4817	Decal - Reel Engagement (Japan)	1
57	321-20	Screw - Cap Hex. Hd.	4
58	3254-8	Washer - Lock I.T.L.W.	4
59	88-7190	Spacer - Pulley Support	1

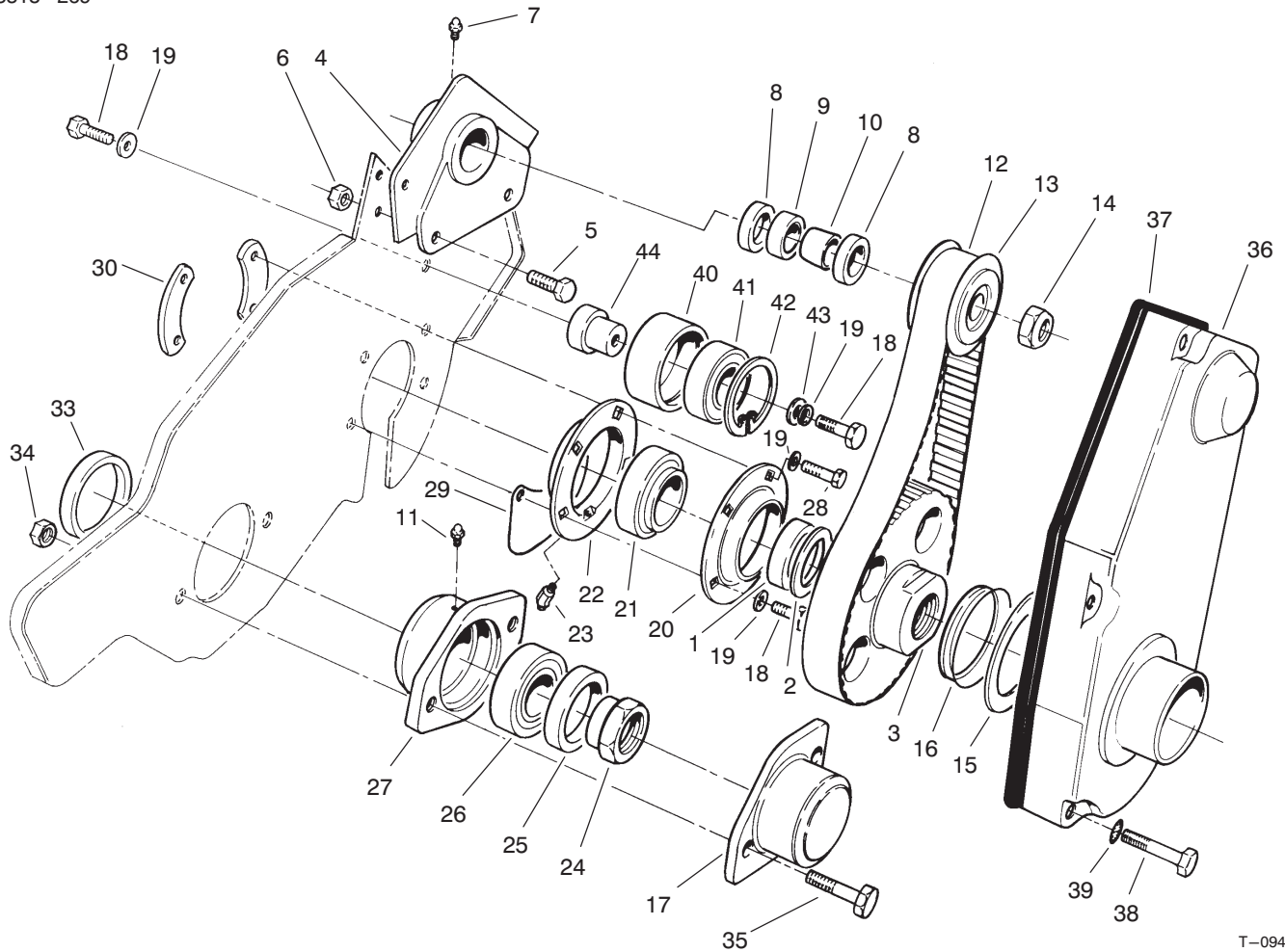


T-0947A

## REEL ASSEMBLY

Ref. No.	Part No.	Description	No. Used	Ref. No.	Part No.	Description	No. Used
1	93-6069	Grass Shield Assembly (Incl. Ref. #9 & 10)	1	10	93-7290	Decal - Service (Portuguese)	1
2	65-6450	Bracket - Shield LH	1	10	93-7291	Decal - Service (Swedish)	1
3	65-6460	Bracket - Shield RH	1	10	93-9391	Decal - Service (French)	1
4	321-3	Screw - Cap Hex. Hd.	4	10	93-9392	Decal - Service (Spanish)	1
5	3256-22	Washer - Flat	6	10	93-9393	Decal - Service (German)	1
6	3296-42	Nut - Lock	4	10	93-9394	Decal - Service (Japan)	1
7	36-7260	Bar - Cutoff	1	11	93-6097	Reel Assembly - 11 Blade	1
8	32144-73	Screw - Self Tapping	5	*	93-6087	Reel Assembly - 8 Blade	1
9	62-5070	Decal - Warning	1	12	93-6053	Bedbar	1
9	93-8064	Decal - Warning (Europe)	1	13	57-4910	Screw - Special	13
9	84-6560	Decal - Warning (Japan)	1	14	52-2900	Washer - Poly	4
10	93-6098	Decal - Service	1	15	65-6270	Bolt - Bedbar	2
10	93-7285	Decal - Service (Danish)	1	16	32128-48	Nut - Flange	2
10	93-7286	Decal - Service (Dutch)	1	19	93-4264	Bedknife - 1/8	1
10	93-7287	Decal - Service (Finnish)	1	*	93-4263	Bedknife - Tournament	1
10	93-7288	Decal - Service (Italian)	1	*	93-4262	Bedknife - Micro	1
10	93-7289	Decal - Service (Norwegian)	1	20	52-2860	Washer	4

\*Not Illustrated



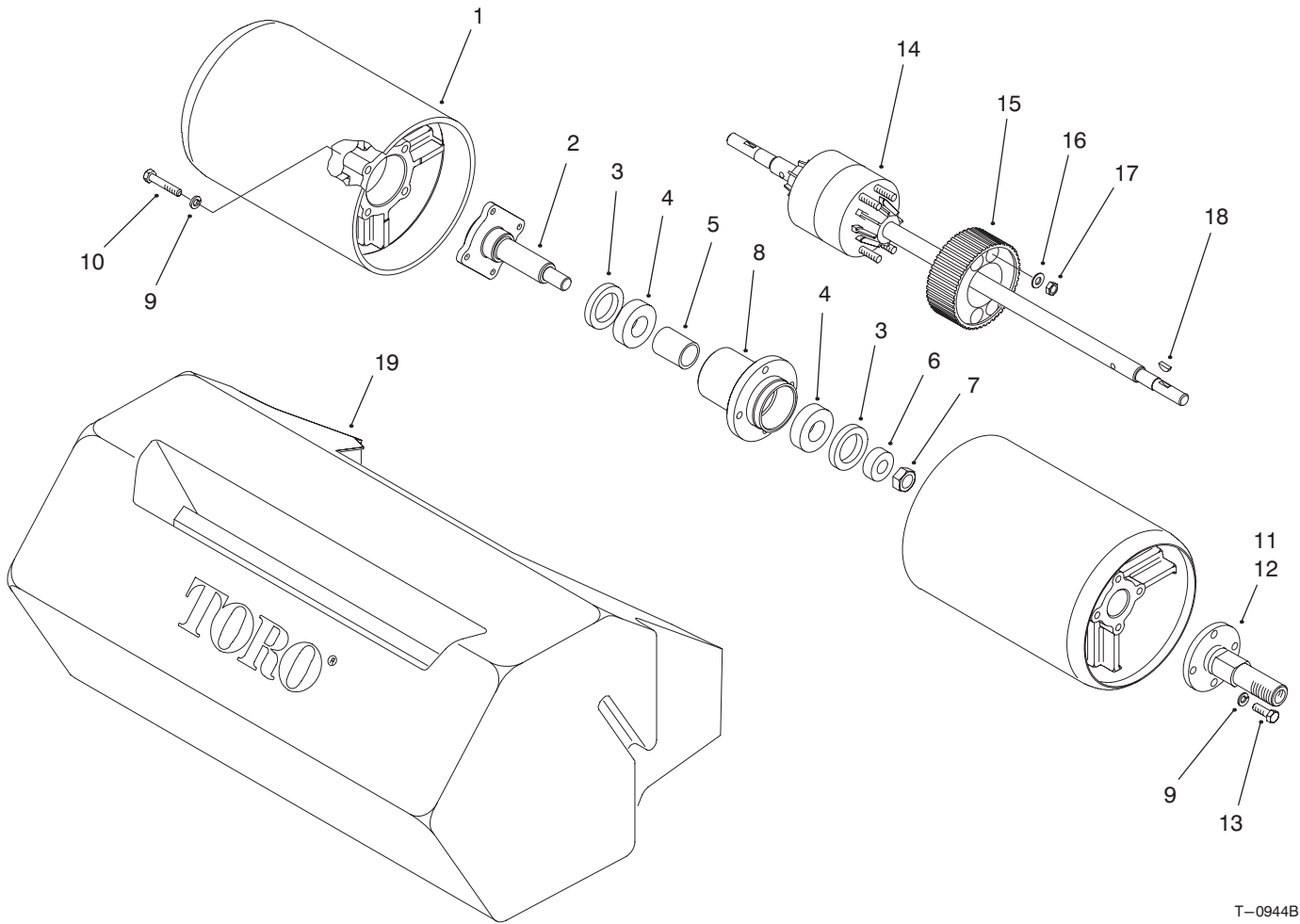
T-0945

## DRUM DRIVE ASSEMBLY

Ref. No.	Part No.	Description	No. Used
1	88-7530	Spacer	2
2	88-7540	Washer - Backup	2
3	88-7560	Pulley - LH	1
*	88-7550	Pulley - RH	1
4	88-7470	Housing - LH	1
*	88-7490	Housing - RH	1
5	322-5	Screw - Cap Hex. Hd.	4
6	3296-29	Nut - Lock	4
7	302-19	Fitting - Grease	2
8	253-160	Seal	4
9	251-338	Bearing	2
10	86-7130	Spacer	2
11	302-5	Fitting - Grease	1
12	65-6210	Belt	2
13	65-6660	Pulley	2
14	3296-57	Nut	2
15	65-6570	Washer	2
16	253-161	Seal - V-Ring	2
17	65-6220	Cover - Bearing	1
18	322-3	Screw - Cap Hex. Hd.	10
19	3253-4	Washer - Lock	10
20	65-6590	Flangette	2
21	88-7880	Bearing	2

Ref. No.	Part No.	Description	No. Used
22	65-8710	Flangette (Incl. Ref. #23)	2
23	302-11	Fitting - Grease	2
24	92-7302	Nut - Bearing Lock	1
25	253-163	Seal	1
26	251-342	Bearing	1
27	65-8640	Housing - Bearing	1
29	65-8720	Closure	2
30	65-8730	Clamp - Bearing	4
33	253-96	Seal	1
34	3296-39	Nut - Lock	2
35	323-7	Screw - Cap Hex. Hd.	2
36	88-7680	Cover - Drum Belt LH	1
*	88-7690	Cover - Drum Belt RH	1
37	88-7810	Seal Strip - Drum Cover	2
38	321-11	Screw - Cap Hex. Hd.	8
39	3254-8	Washer - Lock I.T.L.W.	8
40	88-7850	Idler Pulley Assembly (Incl. Ref. #41-45 & 47)	2
41	38-7820	Bearing - Ball	2
42	32120-42	Ring - Snap	2
43	88-7200	Washer - Flat	2
44	88-7190	Spacer - Pulley Support	2

\*Not Illustrated

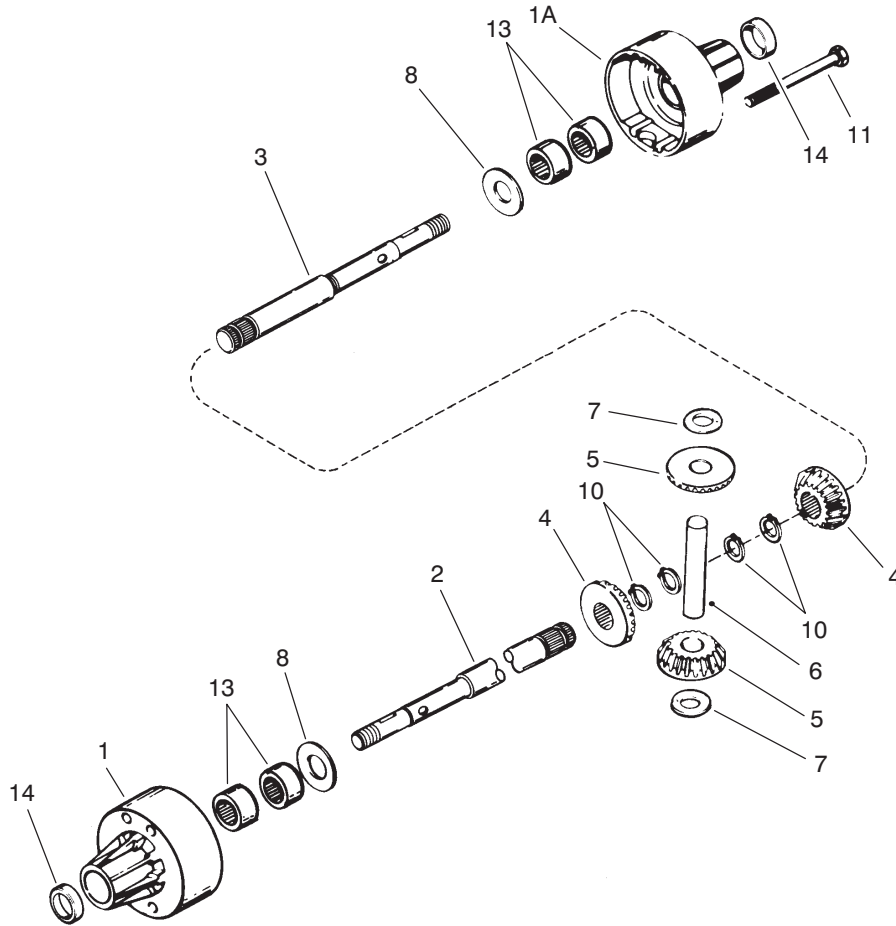


T-0944B

## DRUM AND BASKET ASSEMBLY

Ref. No.	Part No.	Description	No. Used
1	93-9047	Drum	2
2	94-5850	Spindle - Drum	1
3	253-159	Seal - Spring Lip	2
4	251-257	Bearing	2
5	65-6520	Spacer - Bearing	1
6	65-6530	Spacer - Seal	1
7	3296-33	Nut - Lock	1
8	94-5852	Hub - Drum	1
9	3253-4	Washer - Lock	16
10	322-9	Screw - Cap Hex. Hd.	8

Ref. No.	Part No.	Description	No. Used
11	88-7520	Shaft - Drum LH	1
12	88-7510	Shaft - Drum RH	1
13	322-5	Screw - Cap Hex. Hd.	8
14	93-6055	Differential Assembly Peerless Model 100-111	1
15	65-9120	Pulley - Differential	1
16	3256-23	Washer - Flat	4
17	3296-29	Nut - Lock	4
18	3257-32	Key - Woodruff	2
19	65-7230	Basket - Grass	1

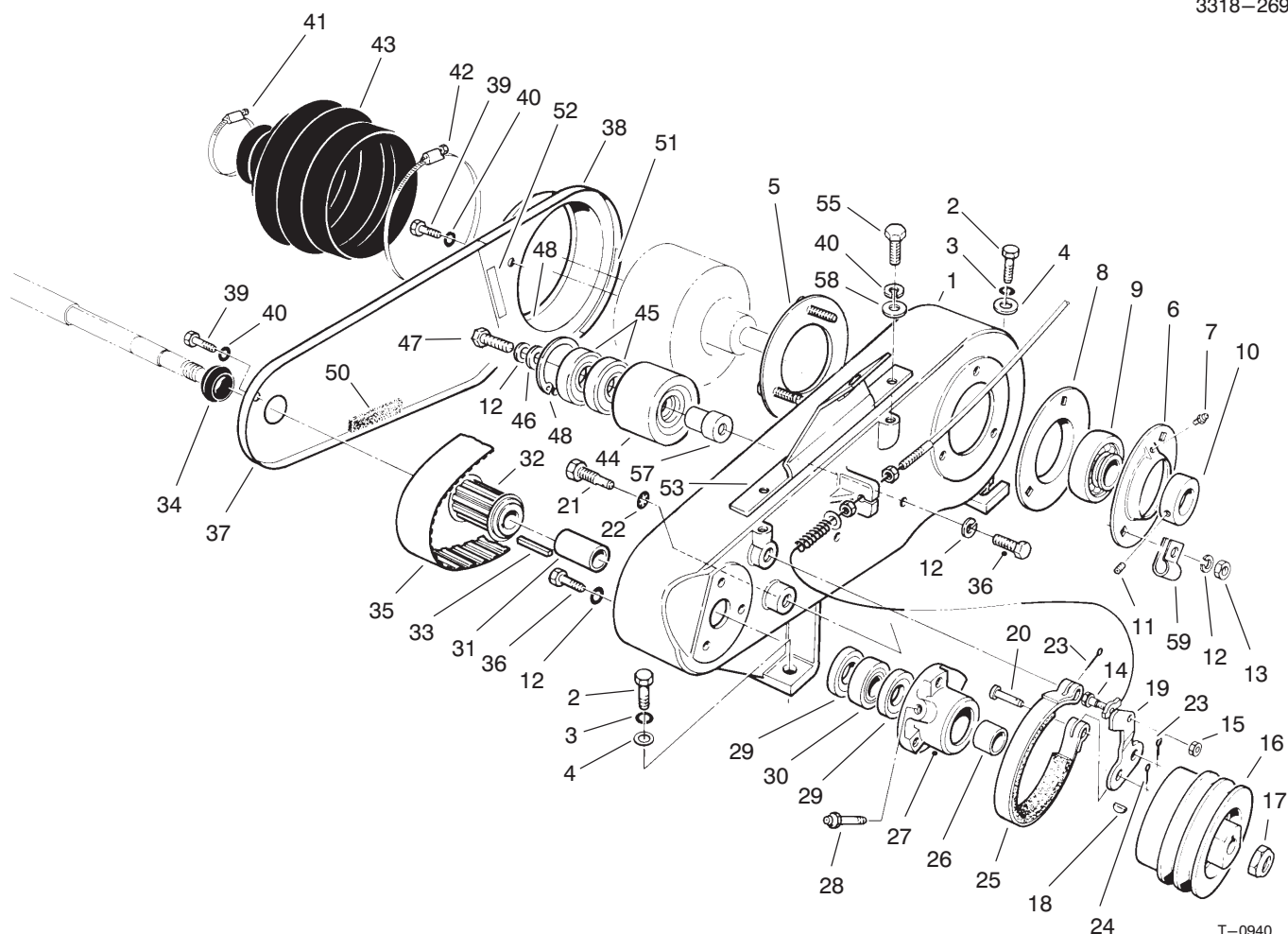


T-1571

## DIFFERENTIAL ASSEMBLY PEERLESS MODEL NO. 100-111

Ref. No.	Part No.	Description	No. Used
1	774881	Housing Differential Carrier (Incl. Ref. #13 & 14)	1
1A	774882	Housing Differential Carrier (Incl. Ref. #13 & 14)	1
2	6045-P1	Axle (20-17/32" Long)	1
3	6046-P1	Axle (6-19/32" Long)	1
4	778221	Gear Bevel	2
5	778068	Gear Pinion	2

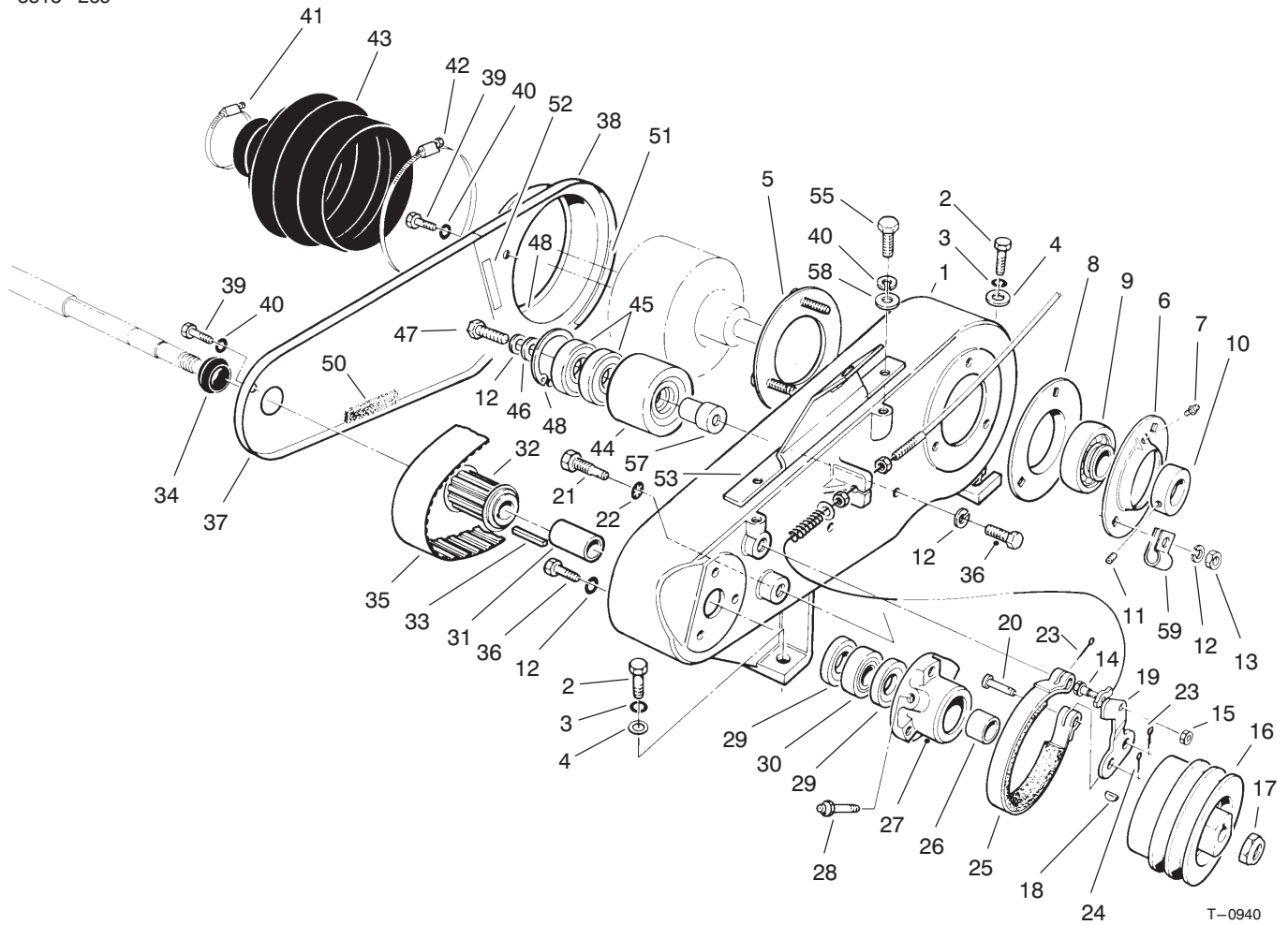
Ref. No.	Part No.	Description	No. Used
6	786040	Pin Drive	1
7	780096	Washer Thrust	2
8	780001	Washer	2
10	792125	Ring - Retaining (Pkg. of 2)	4
11	792093	Screw Flanged Hex Hd.	4
13	780140	Bearing Needle	4
14	788042	Seal Oil	2



T-0940

## COUNTERSHAFT ASSEMBLY

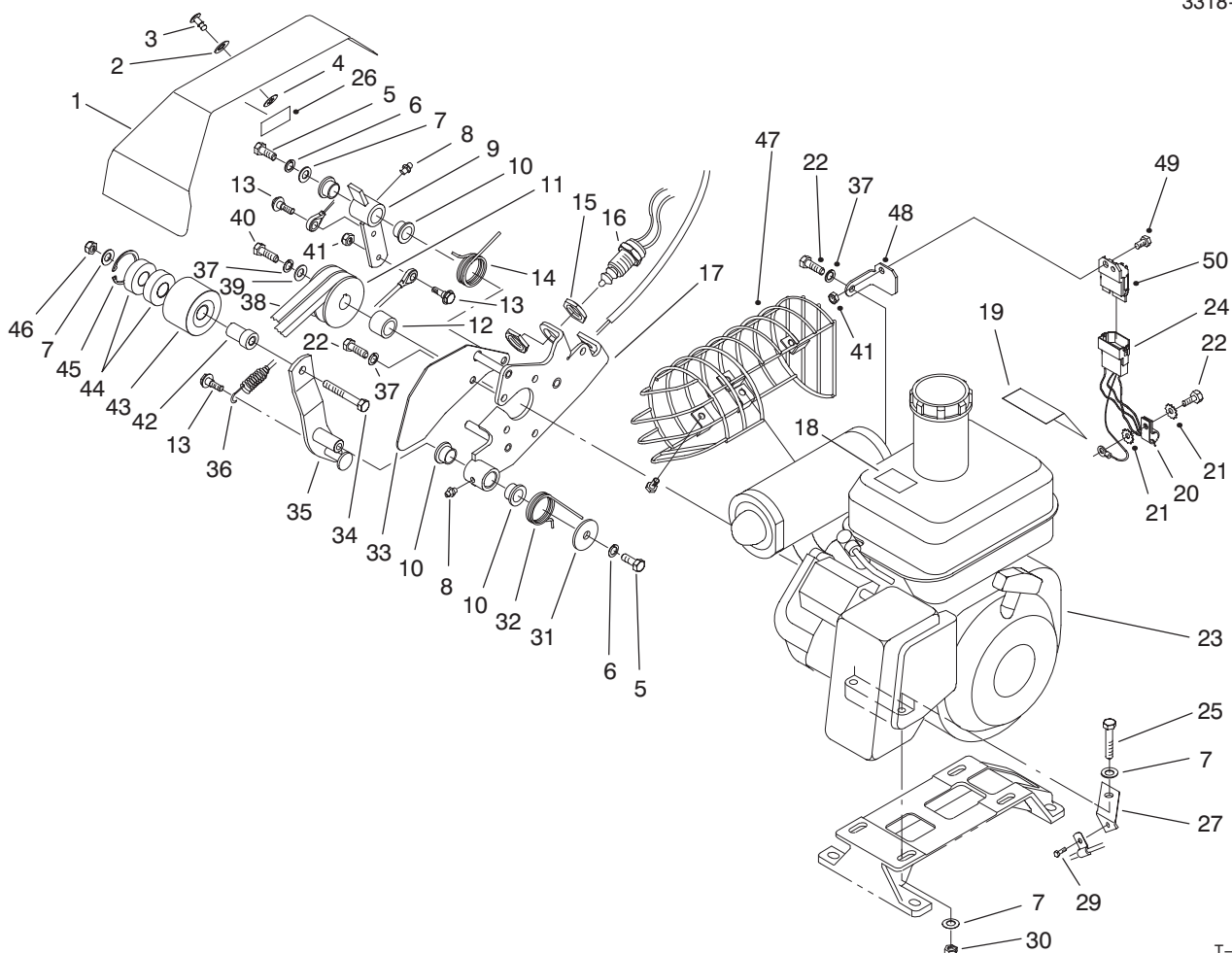
Ref. No.	Part No.	Description	No. Used	Ref. No.	Part No.	Description	No. Used
1	88-7230	Housing - Countershaft	1	25	65-8700	Band - Brake	1
2	323-5	Screw - Cap Hex. Hd.	4	26	86-7130	Spacer - Short	1
3	3253-21	Washer - Lock	4	27	65-6760	Housing - Bearing	1
4	3256-24	Washer - Flat	4	28	302-64	Fitting - Grease	1
5	65-6720	Plate - Screw	1	29	253-160	Seal	2
6	65-6700	Flangette	1	30	251-338	Bearing	1
7	302-55	Fitting - Grease	1	31	86-7140	Spacer - Long	1
8	65-6710	Flangette	1	32	65-8910	Pulley - Countershaft	1
9	251-343	Bearing (Incl. Ref. #10 & 11)	1	33	65-6850	Key	1
10		Collar - Locking	1	34	88-7710	Seal - Countershaft	1
11		Screw - Set	2	35	65-9080	Belt	1
12	3253-4	Washer - Lock	8	36	322-5	Screw - Cap Hex. Hd.	4
13	3218-2	Nut - Jam	3	37	88-7240	Cover - Box Front	1
14	11-9030	Bolt - Shoulder	1	38	88-7250	Cover - Box Rear	1
15	3296-42	Nut - Lock	1	39	321-2	Screw - Cap Hex. Hd.	3
16	92-9212	Pulley - Input Shaft	1	40	3253-3	Washer - Lock	5
17	3296-57	Nut - Lock	1	41	2412-139	Clamp - Hose	1
18	3257-32	Key	1	42	2412-140	Clamp - Hose	1
19	65-8610	Lever - Brake	1	43	65-6800	Boot - Differential	1
20	283-75	Pin - Clevis	1	44	88-7870	Idler Pulley Assembly (Incl. Ref. #12, 45-48 & 57)	1
21	65-6810	Support - Brake	2	45	38-7820	Bearing - Ball	2
22	3254-6	Washer - Lock I.T.L.W.	2	46	88-7200	Washer - Flat	1
23	3272-6	Pin - Cotter	2	47	322-3	Screw - Cap Hex. Hd.	1
24	3272-8	Pin - Cotter	1	48	32120-42	Ring - Retaining	1
				50	65-6901	Strip - Cover Seal	1



## COUNTERSHAFT ASSEMBLY (Continued)

Ref. No.	Part No.	Description	No. Used
51	65-6902	Strip - Cover Seal	1
52	65-6903	Strip - Cover Seal	1
53	93-1448	Cover Bracket	1
55	321-3	Screw - Cap Hex. Hd.	2

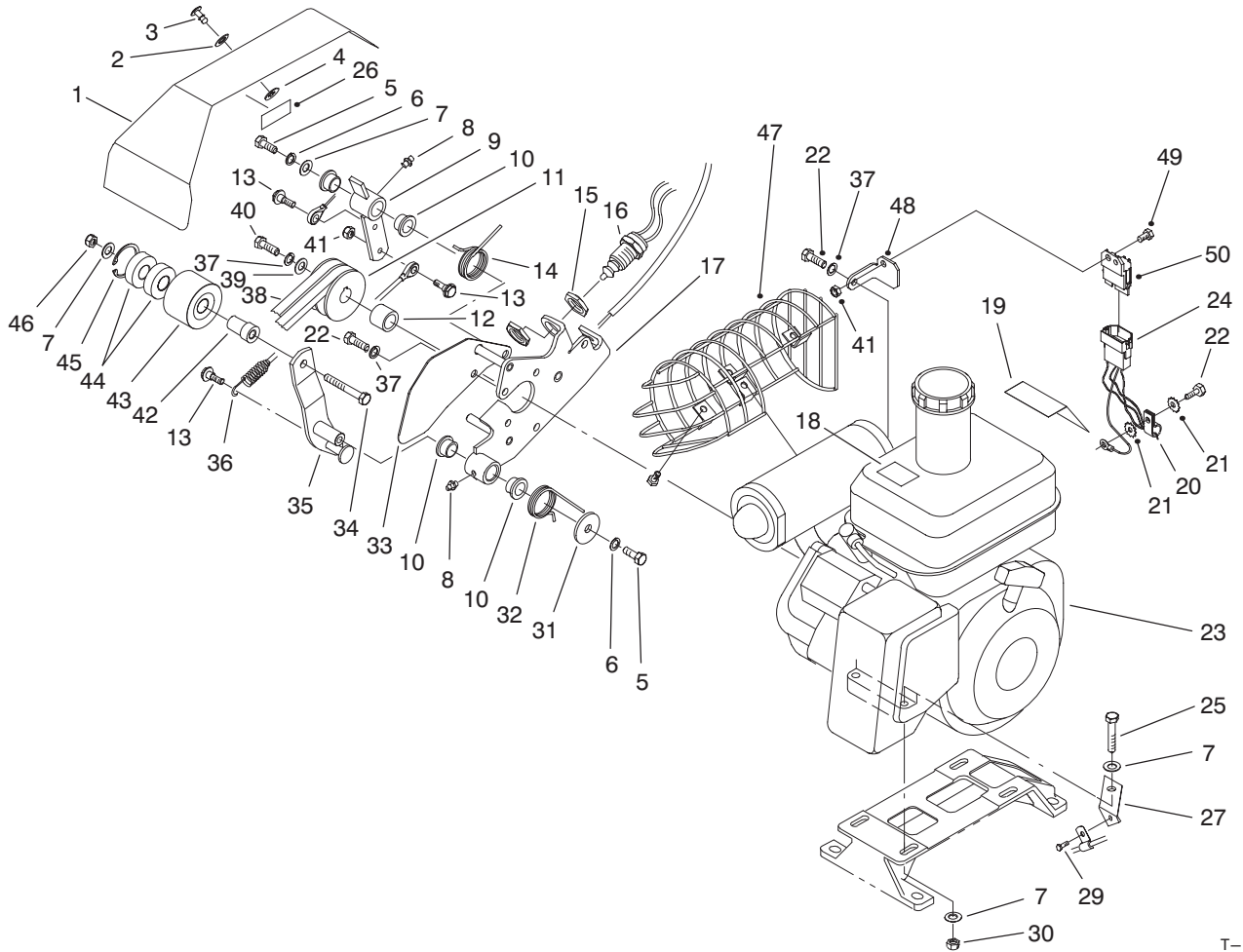
Ref. No.	Part No.	Description	No. Used
57	88-7380	Spacer - Pulley Support	1
58	3256-22	Washer - Flat	2
59	88-7970	Clip	1



T-1996A

## ENGINE AND BELLCRANK ASSEMBLY

Ref. No.	Part No.	Description	No. Used	Ref. No.	Part No.	Description	No. Used
1	93-6045	Cover - Bellcrank	1	23	93-6088	Engine Assembly Kawasaki Model FE120G-AS00 (Incl. Ref. #18 & 19)	1
2	3256-2	Washer - Flat	1	24	94-5862	Harness - Wire	1
3	93-6074	Stud	1	24	94-5865	Harness - Wire (Europe)	1
4	93-6073	Retainer	1	25	322-9	Screw - Cap Hex. Hd.	4
5	323-4	Screw - Cap Hex. Hd.	2	26	67-5360	Decal - Danger	1
6	3253-21	Washer - Spring Lock	2	26	93-7273	Decal - Danger (Europe)	1
7	3256-56	Washer - Flat	10	26	84-7280	Decal - Danger (Japan)	1
8	302-5	Fitting - Grease	2	27	88-7960	Bracket - Throttle Cable	1
9	93-6014	Lever	1	29	32144-73	Screw - Hex. Washer Hd. Thread Form	1
10	65-8770	Bushing	4	30	3296-29	Nut - Lock	4
11	92-9216	Pulley - Input Drive	1	31	93-6099	Washer	1
12	65-8260	Spacer - Engine Shaft	1	32	93-6012	Spring - Torsion, Clutch	1
13	11-9030	Bolt - Shoulder	3	33	93-6013	Shield - Belt	1
14	93-6011	Spring - Torsion	1	34	323-11	Screw - Cap Hex. Hd.	1
15	3218-20	Nut - Jam	2	35	93-6003	Lever - Clutch	1
16	87-5490	Switch (Incl. Ref. #15)	1	36	93-6002	Cable Assembly - Link	1
17	93-6015	Bracket - Clutch	1	37	3253-4	Washer - Spring Lock	7
18	63-8440	Decal - Hot	1	38	92-9218	V-Belt, Matched Set	1
18	93-8069	Decal - Hot (Europe)	1	39	65-8270	Washer	1
18	83-2560	Decal - Hot (Japan)	1	40	48-9460	Screw - Cap Hex. Hd.	1
19	88-7620	Decal - Danger	1	41	3296-42	Nut - Lock	4
19	93-7348	Decal - Danger (Europe)	1	42	88-7350	Spacer - Pulley Support	1
19	92-4813	Decal - Danger (Japan)	1				
20	2412-93	Clamp - R	1				
21	3255-9	Washer - External Lock	2				
22	48-7700	Screw - Cap Hex. Hd.	7				

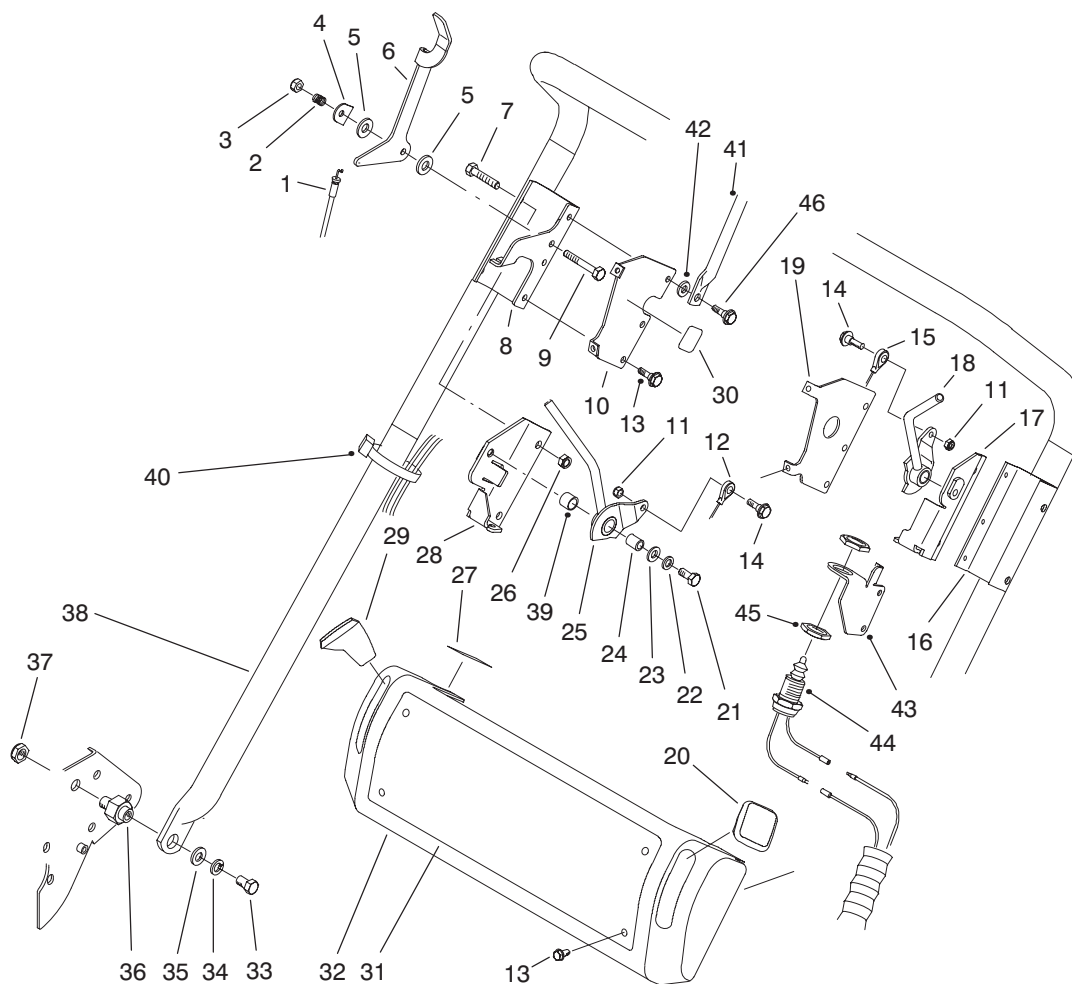


T-1996A

## ENGINE AND BELLCRANK ASSEMBLY

Ref. No.	Part No.	Description	No. Used
43	88-7890	Idler Pulley Assembly (Incl. Ref. #42, 44 & 45)	1
44	38-7820	Bearing - Ball	2
45	32120-42	Ring - Retaining	1
46	3296-39	Nut - Lock	1
47	93-6092	Guard - Muffler (Europe)	1

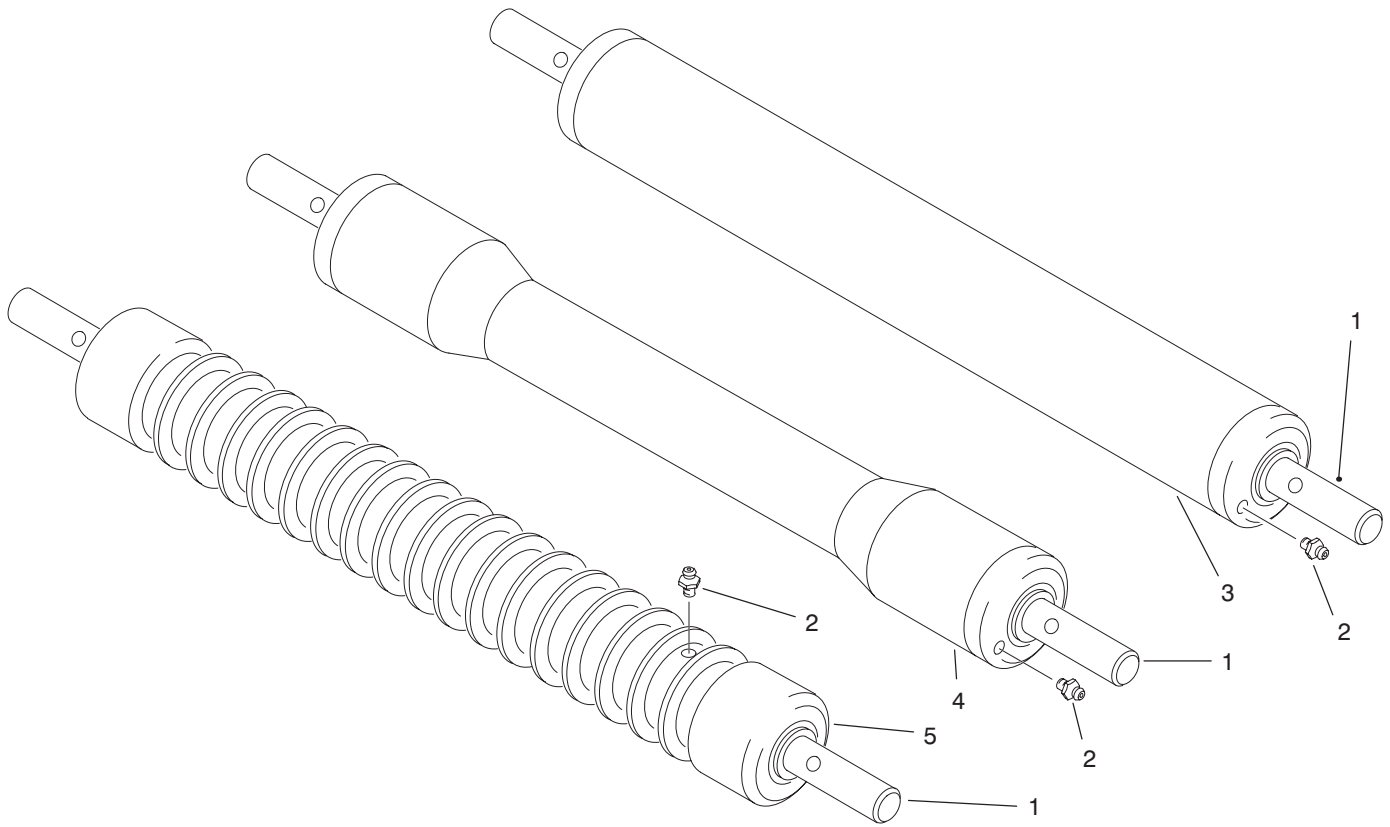
Ref. No.	Part No.	Description	No. Used
48	94-5861	Bracket - Module	1
49	321-3	Screw - Cap Hex. Hd.	1
50	94-5860	Module - Interlock	1
50	94-3431	Module - Interlock (Europe)	1
*	93-9001	Bellcrank Cover Assembly (Incl. Ref. #1 & 26)	1



T-1997A

## HANDLE ASSEMBLY

Ref. No.	Part No.	Description	No. Used	Ref. No.	Part No.	Description	No. Used
1	93-9023	Cable - Throttle	1	26	3296-29	Nut - Lock	4
2	3-5787	Spring	1	27	93-6085	Decal - Throttle	1
3	3296-56	Nut - Lock	1	28	93-6019	Bracket - Clutch	1
4	93-6016	Washer - Retaining	1	29	65-8970	Knob - Black	1
5	66-2921	Washer - Friction	2	30	66-2000	Decal - Noise	1
6	93-6017	Lever - Throttle	1	31	93-6084	Decal - Console	1
7	322-9	Screw - Cap Hex. Hd.	4	31	93-7347	Decal - Console (Europe)	1
8	93-6018	Bracket - Skid, Clutch	1	31	94-6312	Decal - Console (Japan)	1
9	321-8	Screw - Cap Hex. Hd.	1	32	93-6036	Console	1
10	93-6046	Bracket - Console RH	1	33	323-34	Screw - Cap Hex. Hd.	2
11	3296-42	Nut - Lock	2	34	3253-21	Washer - Spring Lock	2
12	93-6081	Cable - Clutch	1	35	3256-24	Washer - Flat	2
13	93-6083	Screw	10	36	93-6000	Pin - Handle Pivot	2
14	11-9030	Bolt - Shoulder	2	37	3296-28	Nut - Lock Insert	2
15	93-6082	Cable - Brake	1	38	93-6001	Handle	1
16	93-6021	Bracket - Skid, Brake	1	39	256-206	Bushing	2
17	93-6022	Bracket - Brake	1	40	3290-378	Tie - Cable	4
18	93-6058	Lever - Brake	1	41	93-9009	Bail Asm. (Europe)	1
19	93-6047	Bracket - Console LH	1	42	93-6079	Spacer (Europe)	2
20	65-8971	Knob - Red	1	43	93-6078	Bracket - Switch (Europe)	1
21	3210-7	Screw - Cap Hex. Hd.	2	44	87-5490	Switch (Europe) (Incl. Ref. #45)	1
22	3253-4	Washer - Spring Lock	2	45	3218-20	Nut - Hex. Jam (Europe)	2
23	3256-23	Washer - Flat	2	46	11-9030	Bolt - Shoulder (Europe)	4
24	88-7450	Spacer	2				
25	93-6057	Lever - Clutch	1				



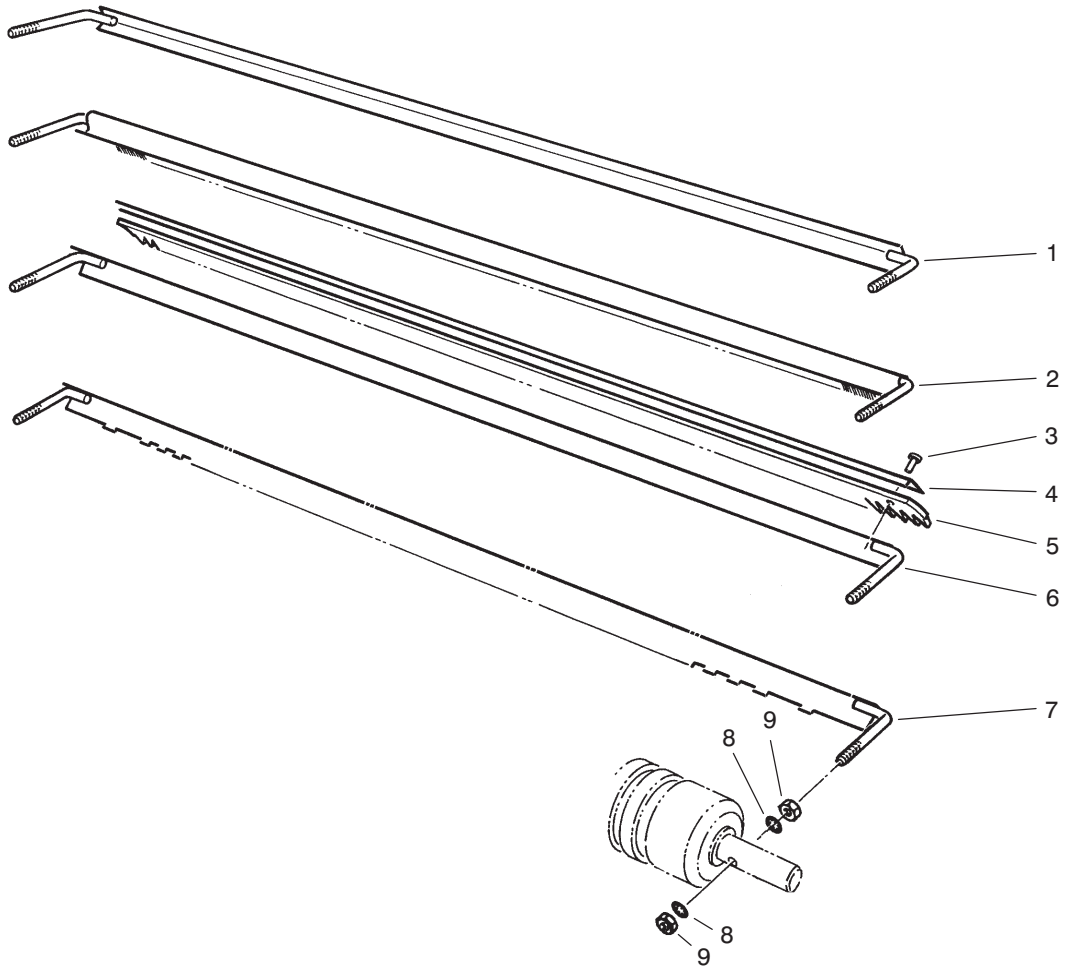
T-0956A

## CUTTING UNIT ROLLER OPTIONS

Ref. No.	Part No.	Description	No. Used
1	52-3180	Bearing - Roller	2
2	302-5	Fitting - Grease	2
3	52-3170	Assembly - Roller (Incl. Ref. #1 & 2)	1
4	52-3590	Assembly - Swaged Roller	

Ref. No.	Part No.	Description	No. Used
5	71-1550	(Incl. Ref. #1 & 2) Assembly - Wiehle Roller Cast Iron (Incl. Ref. #1 & 2)	1
*	04118	Wiehle Roller - Cast Iron (Carton of 1)	1

\*Not Illustrated



T-1998

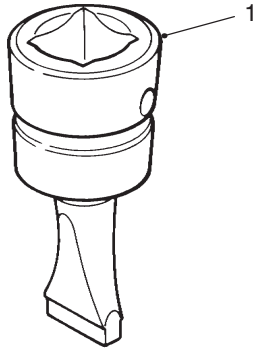
## SCRAPER OPTIONS

Ref. No.	Part No.	Description	No. Used
1	65-8360	Scraper - Smooth	1
2	33-1000	Scraper - Brush	1
3	3295-15	Rivet	11
4	8-2520	Support - Comb	1
5	8-2530	Comb - Urethane	1

Ref. No.	Part No.	Description	No. Used
6	11-0070	Assembly - Comb, Scraper (Incl. Ref. #3-5)	1
7	65-8340	Scraper - Wiehle Roller	1
8	3254-8	Washer - Lock I.T.L.W.	4
9	3219-1	Nut-Hex	4

# SPECIAL TOOLS

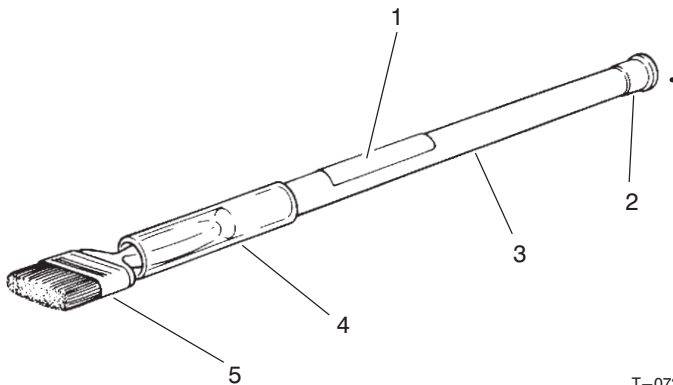
## BEDKNIFE SCREW TOOL NO. \*TOR510880



T-0729

Ref. No.	Part No.	Description	No. Used
1	51-0880	Tool – Bedknife Screw	1

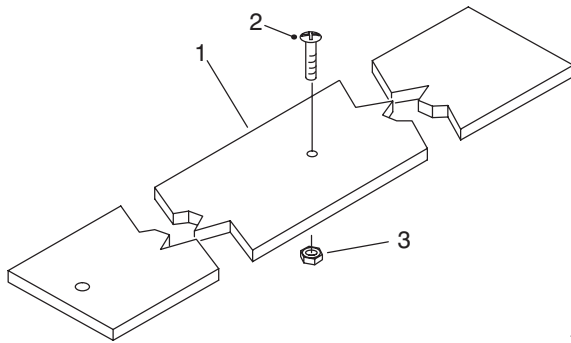
## BACKLAPPING BRUSH ASSEMBLY NO. \*TOR299100



T-0731

Ref. No.	Part No.	Description	No. Used
1	12-9140	Decal	1
2	2410-18	Plug	1
3	29-9080	Handle	1
4	29-9090	Hose – Handle	1
5	36-4310	Brush	1

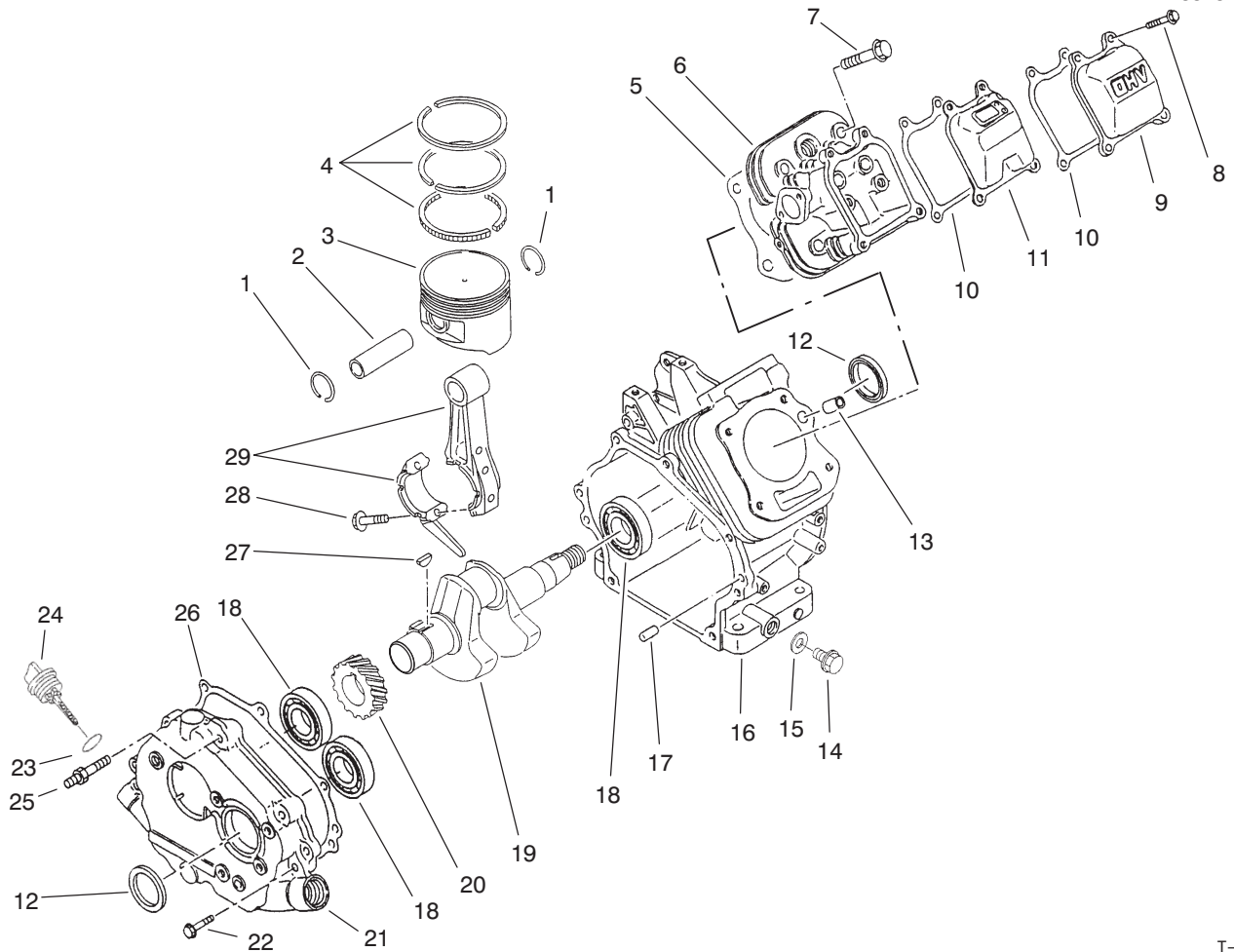
## HEIGHT-OF-CUT BAR ASSEMBLY NO. 13-8199



T-1763

Ref. No.	Part No.	Description	No. Used
1	65-8320	Bar	1
2	32122-22	Screw – Phill. Truss Hd.	1
3	3219-14	Nut	1

\*Obtain these items directly from OTC 2013 4th St. Owatonna, MN. 55060 1-800-533-0492  
(in Minnesota and Canada 1-507-455-7050) Fax. 507-455-7011.

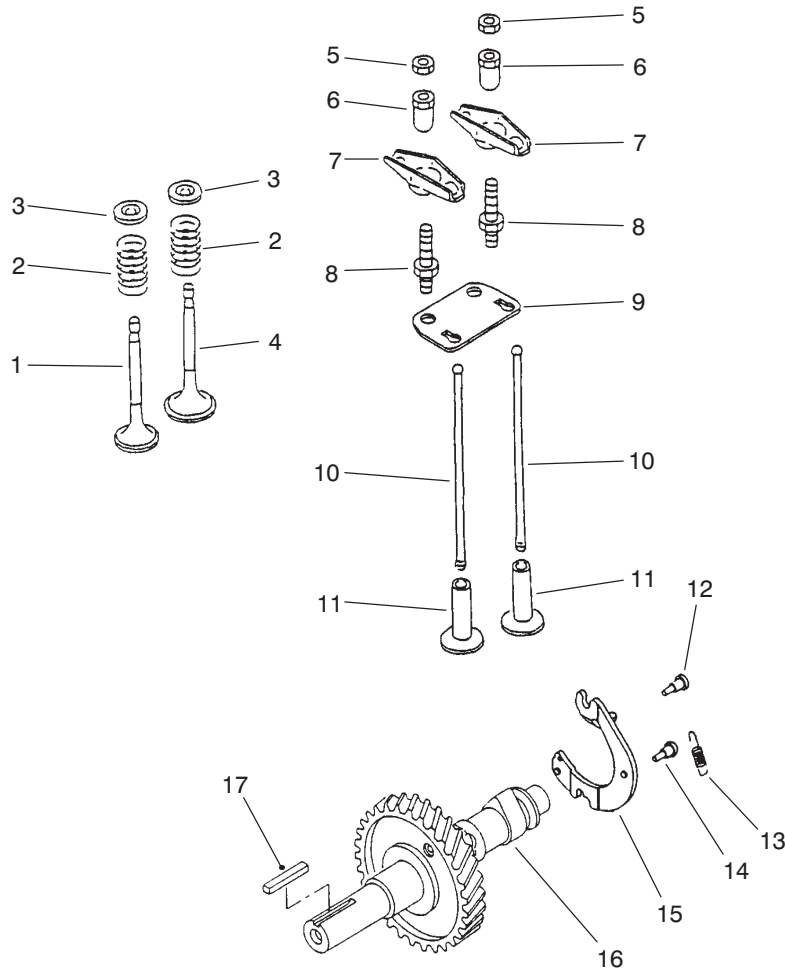


T-1623

## ENGINE CRANKCASE ASSEMBLY

Ref. No.	Part No.	Description	No. Used
1	93-8500	Ring - Retaining	2
2	93-8501	Pin - Piston	1
3	93-8502	Piston	1
4	93-8503	Piston Ring Set	1
5	93-8504	Gasket - Head	1
6	93-8505	Head - Cylinder	1
7	93-8506	Bolt - Flanged	4
8	93-8507	Bolt - Flanged	4
9	93-8508	Case - Rocker	1
10	93-8509	Gasket - Rocker	2
11	93-8510	Breather	1
12	93-8511	Seal - Oil	2
13	93-8512	Pin	2
14	93-8513	Plug - Drain	2
15	93-8514	Gasket - Drain Plug	2
16	93-8515	Crankcase	1

Ref. No.	Part No.	Description	No. Used
17	93-8516	Pin	2
18	93-8517	Bearing - Ball	3
19	93-8518	Crankshaft Assembly (Incl. Ref. #20 & 27)	1
20	93-8519	Gear - Helical	1
21	93-8520	Cover - Crankcase	1
22	93-8521	Bolt - Flanged	7
23	93-8522	Seal - O-Ring	2
24	93-8523	Cap - Oil Filler	2
25	93-8524	Stud	1
26	93-8525	Gasket - Crankcase	1
27	93-8526	Key	1
28	93-8527	Bolt - Rod	2
29	93-8528	Connecting Rod Assy. (Incl. Ref. #28)	1

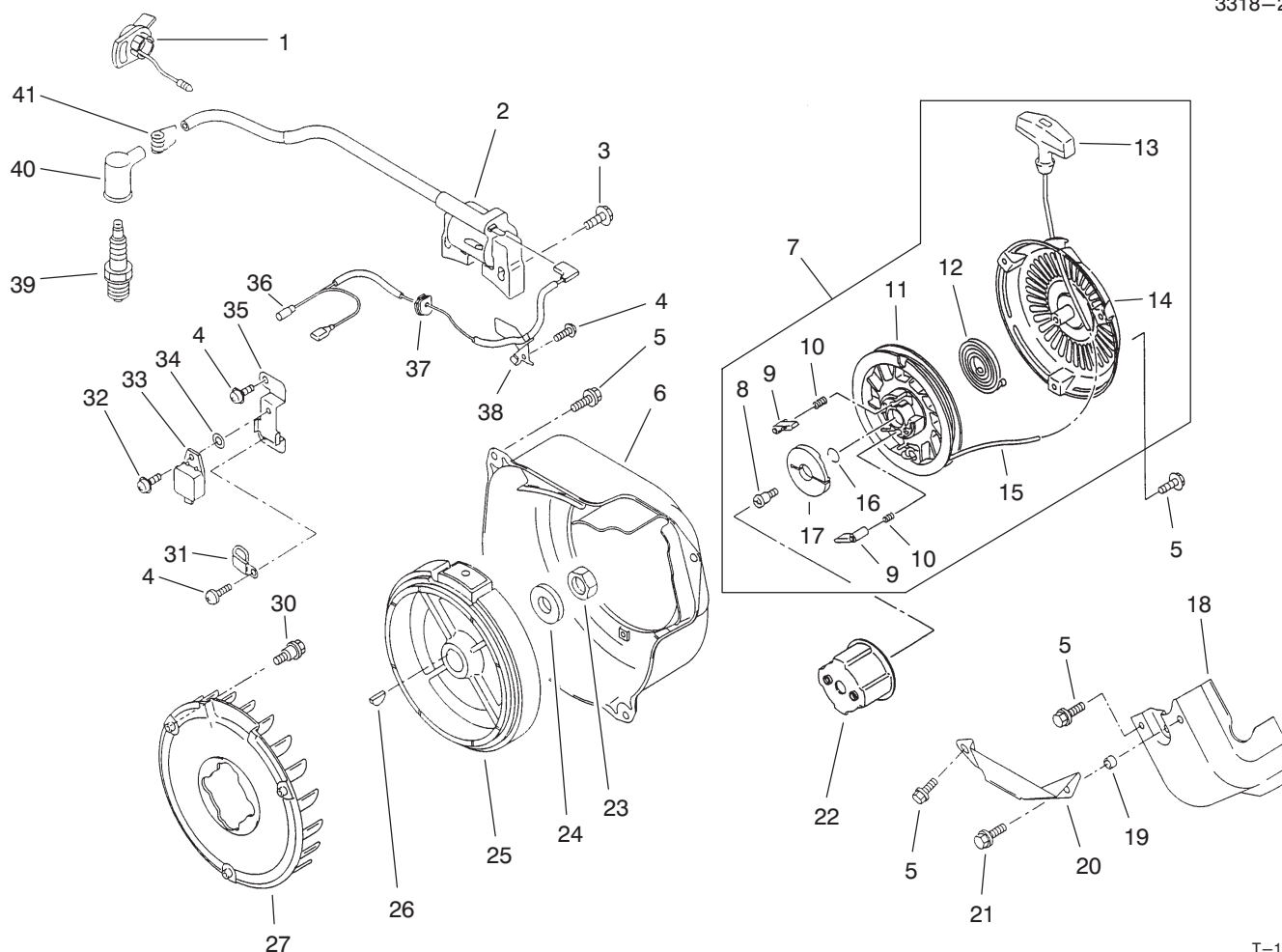


T-1624

## ENGINE CAMSHAFT & VALVES ASSEMBLY

Ref. No.	Part No.	Description	No. Used
1	93-8529	Valve - Exhaust	1
2	93-8530	Spring - Valve	2
3	93-8531	Retainer - Spring	2
4	93-8532	Valve - Intake	1
5	93-8533	Nut	2
6	93-8534	Nut	2
7	93-8535	Arm - Rocker	2
8	93-8536	Bolt	2
9	93-8537	Guide	1

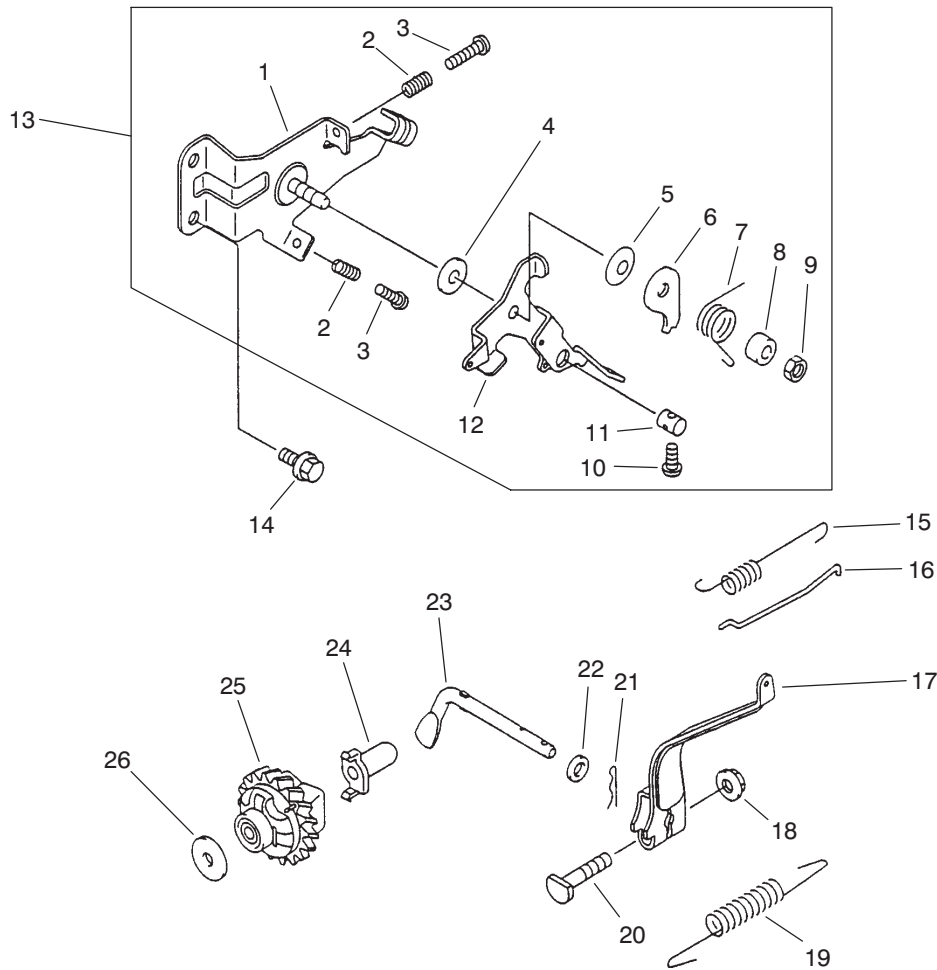
Ref. No.	Part No.	Description	No. Used
10	93-8538	Rod - Push	2
11	93-8539	Tappet	2
12	93-8540	Pin	2
13	93-8541	Spring	1
14	93-8542	Pin	1
15	93-8543	Decompressor	1
16	93-8544	Camshaft Assembly (Incl. Ref. #12-15)	1
17	93-8545	Key	1



T-1617

## ENGINE IGNITION ASSEMBLY

Ref. No.	Part No.	Description	No. Used	Ref. No.	Part No.	Description	No. Used
1	93-8546	Switch	1	22	93-8567	Pulley - Recoil	1
2	93-8547	Coil - Ignition	1	23	93-8568	Nut	1
3	93-8548	Bolt - Flanged	2	24	93-8569	Washer	1
4	93-8549	Screw	3	25	93-8570	Flywheel	1
5	93-8550	Bolt - Flanged	10	26	93-8571	Key	1
6	93-8551	Housing - Fan	1	27	93-8572	Fan	1
7	93-8552	Recoil Starter Assy. (Incl. Ref. #8-17)	1	28	93-8573	Collar	3
8	93-8553	Screw	1	29	93-8574	Washer	3
9	93-8554	Pawl - Recoil	1	30	93-8575	Bolt - Flanged	3
10	93-8555	Spring - Return	2	31	93-8576	Clamp	1
11	93-8556	Reel - Recoil	1	32	93-8577	Screw - Pan Hd.	1
12	93-8557	Spring	1	33	93-8578	Igniter	1
13	93-8558	Grip	1	34	93-8579	Washer	1
14	93-8559	Case - Recoil	1	35	93-8580	Bracket	1
15	93-8560	Rope	1	36	93-8581	Lead - Wire	1
16	93-8561	Ring - Retaining	1	37	93-8582	Grommet	1
17	93-8562	Guide - Pawl	1	38	93-8583	Clamp	1
18	93-8563	Shroud - Engine	1	39	93-8584	Plug - Spark (NGK BR5ES)	1
19	93-8564	Collar	1	40	93-8585	Cap - Spark Plug	1
20	93-8565	Shroud - Engine	1	41	93-8586	Terminal	1
21	93-8566	Bolt - Flanged	1				

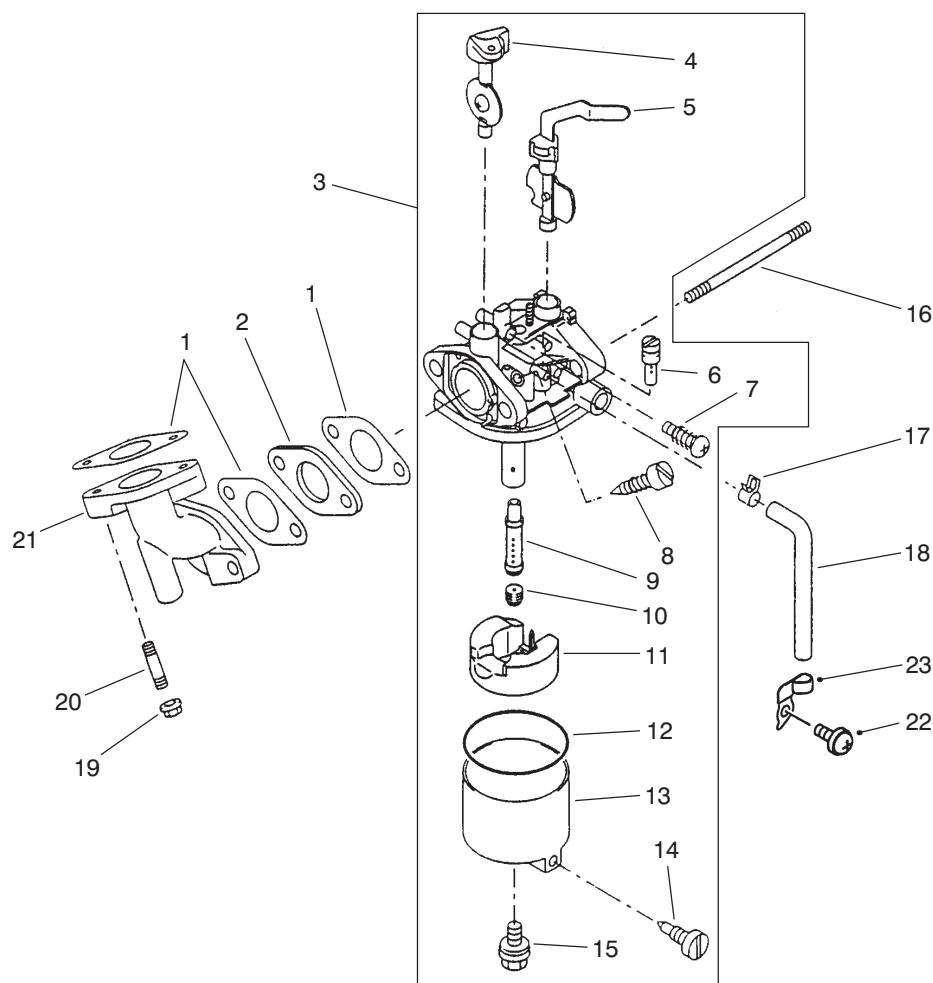


T-1618

## ENGINE GOVERNOR ASSEMBLY

Ref. No.	Part No.	Description	No. Used
1	93-8587	Panel - Control	1
2	93-8588	Spring	2
3	93-8589	Bolt	2
4	93-8590	Washer	1
5	93-8591	Spring	1
6	93-8592	Plate	1
7	93-8593	Spring	1
8	93-8594	Spacer	1
9	93-8595	Nut	1
10	93-8596	Screw - Pan Hd.	1
11	93-8597	Nut	1
12	93-8598	Lever	1
13	93-8599	Control Panel Assy. (Incl. Ref. #1-12)	1

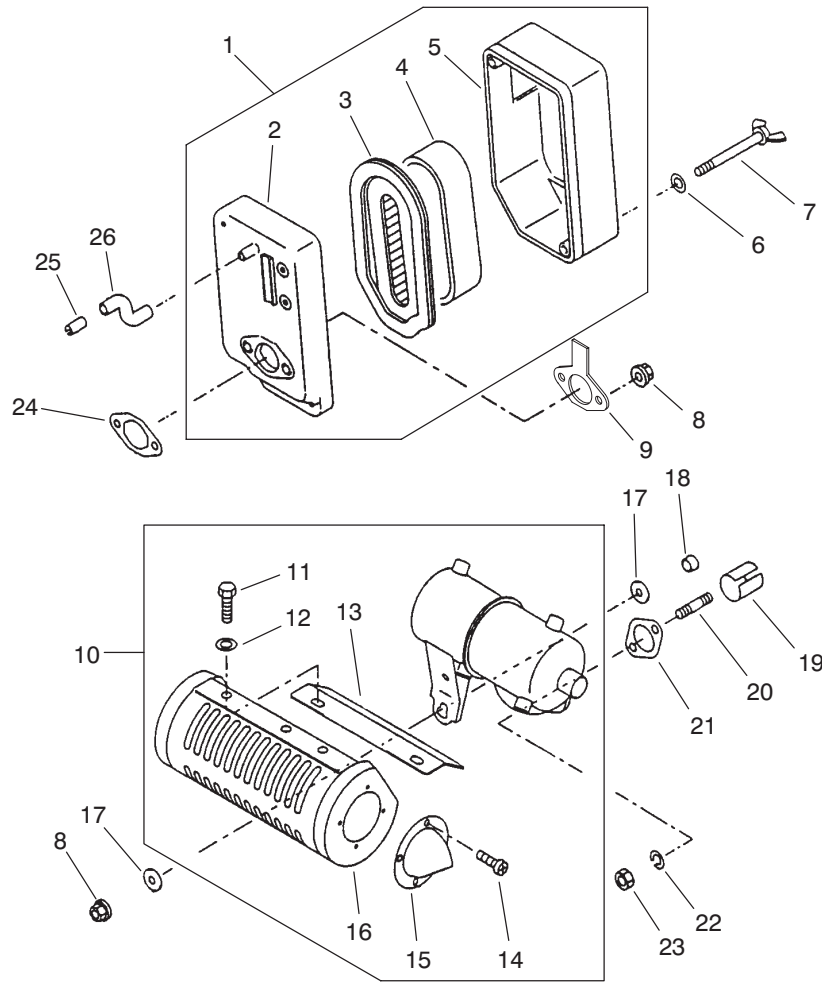
Ref. No.	Part No.	Description	No. Used
14	93-8600	Bolt - Flanged	2
15	93-8601	Spring	1
16	93-8602	Rod - Governor	1
17	93-8603	Arm - Governor	1
18	93-8631	Nut	1
19	93-8605	Spring - Governor	1
20	93-8606	Bolt	1
21	93-8607	Pin - Snap	1
22	93-8608	Washer	1
23	93-8609	Arm - Pivot	1
24	93-8610	Sleeve	1
25	93-8611	Governor Assembly	1
26	93-8612	Washer	1



T-1619

## ENGINE CARBURETOR ASSEMBLY

Ref. No.	Part No.	Description	No. Used	Ref. No.	Part No.	Description	No. Used
1	93-8613	Gasket - Carburetor	3	11	94-6844	Float Assembly	1
2	93-8614	Insulator	1	12	93-8624	Gasket	1
3	93-8615	Carburetor Assembly (Incl. Ref. #4-15)	1	13	93-8625	Float Chamber Assy. (Incl. Ref. #14)	1
4	93-8616	Valve - Throttle	1	14	93-8626	Screw Assembly	1
5	93-8617	Valve - Choke	1	15	93-8627	Bolt	1
6	94-6843	Jet - Pilot #38	1	16	93-8628	Bolt - Stud	2
7	93-8619	Screw Assembly	1	17	93-8629	Clamp	1
8	93-8620	Screw - Assembly	1	18	93-8630	Tube	1
9	93-8621	Nozzle - Main	1	19	93-8631	Nut	2
10	93-8622	Jet - Main #70	1	20	93-8632	Bolt - Stud	2
10	94-6847	Jet - Main #68, High Altitude 1000m-2000m (3280 ft.-6560 ft.)	1	21	93-8633	Pipe - Intake	1
				22	94-6845	Screw	1
				23	94-6846	Clamp	1



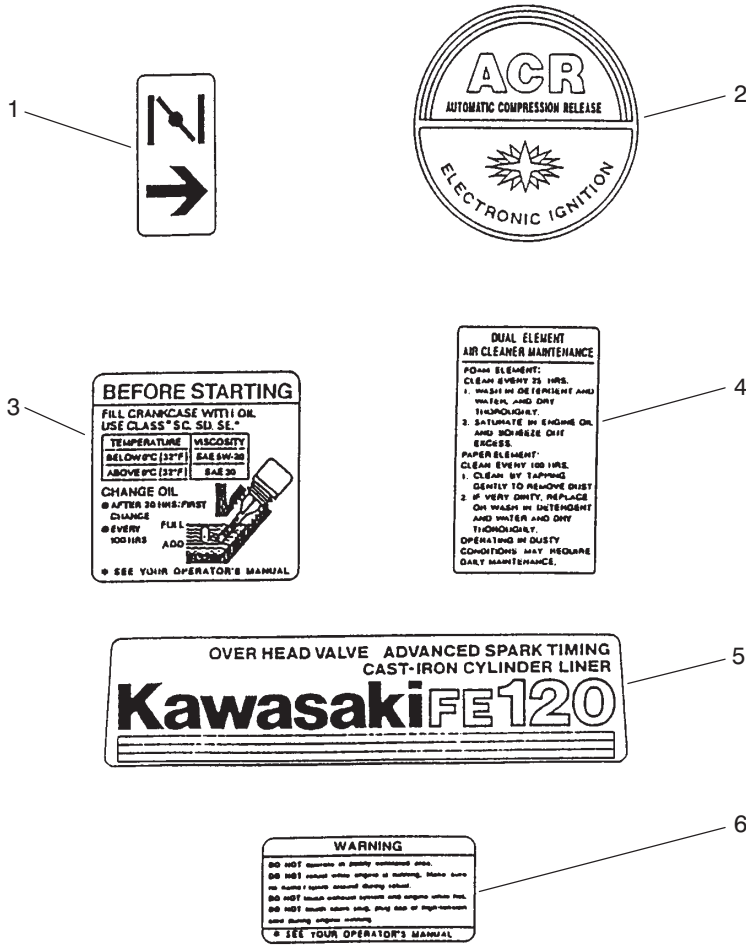
T-1620

## ENGINE AIR FILTER & MUFFLER ASSEMBLY

Ref. No.	Part No.	Description	No. Used
1	93-8634	Air Filter Assembly (Incl. Ref. #2-5)	1
2	93-8635	Case - Air Filter	1
3	93-8636	Element - Air Filter	1
4	93-8637	Element - Air Filter	1
5	93-8638	Cap - Air Filter	1
6	93-8639	Washer	22
7	93-8640	Bolt	2
8	93-8631	Nut	3
9	93-8642	Plate - Air Filter	1
10	93-8643	Muffler Assembly (Incl. Ref. #11-16)	1
11	93-8644	Bolt	4
12	93-8645	Washer	4

Ref. No.	Part No.	Description	No. Used
13	93-8646	Cover - Muffler	1
14	93-8647	Screw	4
15	93-8648	Pipe - Tail	1
16	93-8649	Cover - Muffler	1
17	93-8650	Washer	2
18	93-8651	Collar	1
19	93-8652	Pipe - Exhaust	1
20	93-8653	Bolt - Stud	2
21	93-8654	Gasket - Muffler	1
22	93-8655	Washer - Spring	2
23	93-8656	Nut - Hex.	2
24	93-8657	Gasket - Air Filter	1
25	93-8658	Pipe	1
26	93-8659	Tube	1





T-1622

## ENGINE DECALS ASSEMBLY

Ref. No.	Part No.	Description	No. Used
1	93-8687	Decal - Choke	1
2	93-8688	Decal - Recoil	1
3	93-8689	Decal - Instruction	1

Ref. No.	Part No.	Description	No. Used
4	93-8690	Decal - Maintenance	1
5	93-8691	Decal - Model	1
6	93-8692	Decal - Warning	1

# TORO PART NUMBER INDEX

3318-269

Part No.	Description	Pg. No.	Ref. No.	Qty.	Part No.	Description	Pg. No.	Ref. No.	Qty.
3-5787	Spring	13	2	1	65-7660	Decal - Reel Engagement	4	56	1
8-2520	Support - Comb	15	4	1	65-8260	Spacer - Engine Shaft	11	12	1
8-2530	Comb - Urethane	15	5	1	65-8270	Washer	11	39	1
11-0070	Assembly - Comb, Scraper	15	6	1	65-8290	Standoff - Cover	3	36	2
11-9030	Bolt - Shoulder	11	13	3	65-8320	Bar	16	1	1
11-9030	Bolt - Shoulder	13	14	2	65-8340	Scraper - Wiehle Roller	15	7	1
11-9030	Bolt - Shoulder	9	14	1	65-8360	Scraper - Smooth	15	1	1
11-9030	Bolt - Shoulder (Europe)	13	46	4	65-8570	Rod - Grass Catcher	1	26	2
12-9140	Decal	16	1	1	65-8610	Lever - Brake	9	19	1
29-9080	Handle	16	3	1	65-8640	Housing - Bearing	6	27	1
29-9090	Hose - Handle	16	4	1	65-8640	Housing - Bearing	3	34	1
33-1000	Scraper - Brush	15	2	1	65-8670	Adjuster - Frame	2	39	2
36-4310	Brush	16	5	1	65-8680	Washer - Thrust	1	2	2
36-7260	Bar - Cutoff	5	7	1	65-8690	Screw - Adjusting	2	41	2
38-7820	Bearing - Ball	6	41	2	65-8700	Band - Brake	9	25	1
38-7820	Bearing - Ball	12	44	2	65-8710	Flangette	6	22	2
38-7820	Bearing - Ball	3	44	1	65-8720	Closure	6	29	2
38-7820	Bearing - Ball	9	45	2	65-8730	Clamp - Bearing	6	30	4
48-7700	Screw - Cap Hex. Hd.	11	22	7	65-8770	Bushing	11	10	4
48-9460	Screw - Cap Hex. Hd.	11	40	1	65-8910	Pulley - Countershaft	9	32	1
51-0880	Tool - Bedknife Screw	16	1	1	65-8960	Boot - Clutch	3	28	1
52-2860	Washer	5	20	4	65-8970	Knob - Black	13	29	1
52-2890	Bushing	2	42	2	65-8971	Knob - Red	13	20	1
52-2900	Washer - Poly	5	14	4	65-9080	Belt	9	35	1
52-3170	Assembly - Roller	14	3	1	65-9120	Pulley - Differential	7	15	1
52-3180	Bearing	2	28	2	66-2000	Decal - Noise	13	30	1
52-3180	Bearing - Roller	14	1	2	66-2921	Washer - Friction	13	5	2
52-3590	Assembly - Swaged Roller	14	4	1	67-5360	Decal - Danger	11	26	1
53-4860	Decal - Safety	2	47	1	71-1550	Assembly - Wiehle Roller	14	5	1
55-4300	Decal - Warning	2	35	2	83-2560	Decal - Hot (Japan)	11	18	1
57-4910	Screw - Special	5	13	13	84-2940	Decal - Warning (Japan)	2	35	2
62-5070	Decal - Warning	5	9	1	84-6560	Decal - Warning (Japan)	5	9	1
63-8440	Decal - Hot	11	18	1	84-7280	Decal - Danger (Japan)	11	26	1
63-9510	Bushing Assembly	2	43	2	86-7130	Spacer	6	10	2
65-6200	Belt - Reel Drive	3	41	1	86-7130	Spacer - Short	9	26	1
65-6210	Belt	6	12	2	86-7140	Spacer - Long	9	31	1
65-6220	Cover - Bearing	6	17	1	87-5490	Switch (Europe)	13	44	1
65-6270	Bolt - Bedbar	5	15	2	87-5490	Switch	11	16	1
65-6290	Spring - Clutch Detent	3	20	1	88-6790	Wiehle Roller Assembly	1	27	1
65-6360	Support - Spring	1	5	2	88-7090	Spacer - LH	2	*	1
65-6380	Collar - Thrust	1	3	2	88-7100	Spacer - RH	2	46	1
65-6400	Spring - Compression	1	4	2	88-7110	Rod - Frame Support	2	38	1
65-6450	Bracket - Shield LH	5	2	1	88-7150	Key - Square	3	10	2
65-6460	Bracket - Shield RH	5	3	1	88-7170	Lever - Clutch	3	24	1
65-6520	Spacer - Bearing	7	5	1	88-7190	Spacer - Pulley Support	6	44	2
65-6530	Spacer - Seal	7	6	1	88-7190	Spacer - Pulley Support	4	59	1
65-6570	Washer	6	15	2	88-7200	Washer - Flat	6	43	2
65-6590	Flangette	6	20	2	88-7200	Washer - Flat	3	46	1
65-6660	Pulley	6	13	2	88-7200	Washer - Flat	9	46	1
65-6700	Flangette	9	6	1	88-7230	Housing - Countershaft	9	1	1
65-6710	Flangette	9	8	1	88-7240	Cover - Box Front	9	37	1
65-6720	Plate - Screw	9	5	1	88-7250	Cover - Box Rear	9	38	1
65-6760	Housing - Bearing	9	27	1	88-7350	Spacer - Pulley Support	11	42	1
65-6800	Boot - Differential	9	43	1	88-7380	Spacer - Pulley Support	10	57	1
65-6810	Support - Brake	9	21	2	88-7450	Spacer	13	24	2
65-6850	Key	9	33	1	88-7470	Housing - LH	6	4	1
65-6901	Strip - Cover Seal	9	50	1	88-7490	Housing - RH	6	*	1
65-6902	Strip - Cover Seal	10	51	1	88-7510	Shaft - Drum RH	7	12	1
65-6903	Strip - Cover Seal	10	52	1	88-7520	Shaft - Drum LH	7	11	1
65-6940	Clutch - Jaw Driver	3	11	1	88-7530	Spacer	6	1	2
65-6970	Seal - Felt	3	18	1	88-7540	Washer - Backup	6	2	2
65-7131	Trim - Groomer Arm Cover	3	31	1	88-7550	Pulley - RH	6	*	1
65-7190	Cover - Groomer Arm	3	30	1	88-7560	Pulley - LH	6	3	1
65-7230	Basket - Grass	7	19	1	88-7620	Decal - Danger	11	19	1
65-7510	Grommet - Handle	1	12	2	88-7670	Base - Engine	1	6	1

\*Not Illustrated

# TORO PART NUMBER INDEX (Cont.)

Part No.	Description	Pg. No.	Ref. No.	Qty.	Part No.	Description	Pg. No.	Ref. No.	Qty.
88-7680	Cover - Drum Belt LH	6	36	1	93-6064	Seal - Grass Catcher	2	34	1
88-7690	Cover - Drum Belt RH	6	*	1	93-6068	Front Frame Tube Assembly	2	37	1
88-7700	Cover - Reel Drive	3	50	1	93-6069	Grass Shield Assembly	5	1	1
88-7710	Seal - Countershaft	9	34	1	93-6073	Retainer	11	4	1
88-7720	Washer - Wave	3	7	1	93-6074	Stud	11	3	1
88-7770	Strip - Seal Front	3	51	1	93-6078	Bracket - Switch (Europe)	13	43	1
88-7780	Strip - Seal Rear	3	52	1	93-6079	Spacer (Europe)	13	42	2
88-7790	Strip - Seal Upper	4	53	1	93-6081	Cable - Clutch	13	12	1
88-7800	Strip - Seal Lower	4	54	1	93-6082	Cable - Brake	13	15	1
88-7810	Seal Strip - Drum Cover	6	37	2	93-6083	Screw	13	13	10
88-7830	Clutch & Pulley Assembly	3	12	1	93-6084	Decal - Console	13	31	1
88-7840	Pulley & Drive Assembly	3	42	1	93-6085	Decal - Throttle	13	27	1
88-7850	Idler Pulley Assembly	6	40	2	93-6087	Reel Assembly - 8 Blade	5	*	1
88-7850	Idler Pulley Assembly	3	43	1	93-6088	Engine Assembly	11	23	1
88-7860	Spacer	3	25	1	93-6090	Arm - Height of Cut	1	24	2
88-7870	Idler Pulley Assembly	9	44	1	93-6092	Guard - Muffler (Europe)	12	47	1
88-7880	Bearing	6	21	2	93-6093	Side Plate Assembly RH	1	1	1
88-7890	Idler Pulley Assembly	12	43	1	93-6094	Side Plate Assembly LH	1	19	1
88-7960	Bracket - Throttle Cable	11	27	1	93-6097	Reel Assembly - 11 Blade	5	11	1
88-7970	Clip	10	59	1	93-6098	Decal - Service	5	10	1
88-8950	Decal - Warning	2	33	3	93-6099	Washer	11	31	1
92-4813	Decal - Danger (Japan)	11	19	1	93-6696	Decal - Warning (Europe)	2	35	2
92-4817	Decal - Reel Engagement	4	56	1	93-7252	Decal - CE Mark (Europe)	2	47	1
92-7302	Nut - Bearing Lock	6	24	1	93-7273	Decal - Danger (Europe)	11	26	1
92-8013	Housing - Clutch	3	1	1	93-7285	Decal - Service (Danish)	5	10	1
92-8914	Bolt - Tapered Face	2	36	4	93-7286	Decal - Service (Dutch)	5	10	1
92-9212	Pulley - Input Shaft	9	16	1	93-7287	Decal - Service (Finnish)	5	10	1
92-9216	Pulley - Input Drive	11	11	1	93-7288	Decal - Service (Italian)	5	10	1
92-9218	V-Belt, Matched Set	11	38	1	93-7289	Decal - Service (Norwegian)	5	10	1
93-1448	Cover Bracket	10	53	1	93-7290	Decal - Service	5	10	1
93-4262	Bedknife - Micro	5	*	1	93-7291	Decal - Service (Swedish)	5	10	1
93-4263	Bedknife - Tournament	5	*	1	93-7346	Decal - Reel Engagement	4	56	1
93-4264	Bedknife - 1/8	5	19	1	93-7347	Decal - Console (Europe)	13	31	1
93-6000	Pin - Handle Pivot	13	36	2	93-7348	Decal - Danger (Europe)	11	19	1
93-6001	Handle	13	38	1	93-7842	Decal - Safety (Japan)	2	47	1
93-6002	Cable Assembly - Link	11	36	1	93-8064	Decal - Warning (Europe)	5	9	1
93-6003	Lever - Clutch	11	35	1	93-8069	Decal - Hot (Europe)	11	18	1
93-6011	Spring - Torsion	11	14	1	93-8500	Ring - Retaining	17	1	2
93-6012	Spring - Torsion, Clutch	11	32	1	93-8501	Pin - Piston	17	2	1
93-6013	Shield - Belt	11	33	1	93-8502	Piston	17	3	1
93-6014	Lever	11	9	1	93-8503	Piston Ring Set	17	4	1
93-6015	Bracket - Clutch	11	17	1	93-8504	Gasket - Head	17	5	1
93-6016	Washer - Retaining	13	4	1	93-8505	Head - Cylinder	17	6	1
93-6017	Lever - Throttle	13	6	1	93-8506	Bolt - Flanged	17	7	4
93-6018	Bracket - Skid, Clutch	13	8	1	93-8507	Bolt - Flanged	17	8	4
93-6019	Bracket - Clutch	13	28	1	93-8508	Case - Rocker	17	9	1
93-6021	Bracket - Skid, Brake	13	16	1	93-8509	Gasket - Rocker	17	10	2
93-6022	Bracket - Brake	13	17	1	93-8510	Breather	17	11	1
93-6024	Bushing - Handle Support	1	14	2	93-8511	Seal - Oil	17	12	2
93-6025	Rear Frame W.A.	1	10	1	93-8512	Pin	17	13	2
93-6029	Pin - Ring	1	16	2	93-8513	Plug - Drain	17	14	2
93-6036	Console	13	32	1	93-8514	Gasket - Drain Plug	17	15	2
93-6037	Arm - Handle RH	1	*	1	93-8515	Crankcase	17	16	1
93-6038	Arm - Handle LH	1	13	1	93-8516	Pin	17	17	2
93-6045	Cover - Bellcrank	11	1	1	93-8517	Bearing - Ball	17	18	3
93-6046	Bracket - Console RH	13	10	1	93-8518	Crankshaft Assembly	17	19	1
93-6047	Bracket - Console LH	13	19	1	93-8519	Gear - Helical	17	20	1
93-6048	Bracket - Height of Cut, RH	1	*	1	93-8520	Cover - Crankcase	17	21	1
93-6049	Bracket - Height of Cut, LH	1	25	1	93-8521	Bolt - Flanged	17	22	7
93-6051	Screw - Height of Cut	1	20	2	93-8522	Seal - O-Ring	17	23	2
93-6053	Bedbar	5	12	1	93-8523	Cap - Oil Filler	17	24	2
93-6055	Differential Assembly	7	14	1	93-8524	Stud	17	25	1
93-6056	Shaft - Power	3	9	1	93-8525	Gasket - Crankcase	17	26	1
93-6057	Lever - Clutch	13	25	1	93-8526	Key	17	27	1
93-6058	Lever - Brake	13	18	1	93-8527	Bolt - Rod	17	28	2

\*Not Illustrated

# TORO PART NUMBER INDEX (Cont.)

3318-269

Part No.	Description	Pg. No.	Ref. No.	Qty.	Part No.	Description	Pg. No.	Ref. No.	Qty.
93-8528	Connecting Rod Assy.	17	29	1	93-8593	Spring	20	7	1
93-8529	Valve - Exhaust	18	1	1	93-8594	Spacer	20	8	1
93-8530	Spring - Valve	18	2	2	93-8595	Nut	20	9	1
93-8531	Retainer - Spring	18	3	2	93-8596	Screw - Pan Hd.	20	10	1
93-8532	Valve - Intake	18	4	1	93-8597	Nut	20	11	1
93-8533	Nut	18	5	2	93-8598	Lever	20	12	1
93-8534	Nut	18	6	2	93-8599	Control Panel Assy.	20	13	1
93-8535	Arm - Rocker	18	7	2	93-8600	Bolt - Flanged	20	14	2
93-8536	Bolt	18	8	2	93-8601	Spring	20	15	1
93-8537	Guide	18	9	1	93-8602	Rod - Governor	20	16	1
93-8538	Rod - Push	18	10	2	93-8603	Arm - Governor	20	17	1
93-8539	Tappet	18	11	2	93-8605	Spring - Governor	20	19	1
93-8540	Pin	18	12	2	93-8606	Bolt	20	20	1
93-8541	Spring	18	13	1	93-8607	Pin - Snap	20	21	1
93-8542	Pin	18	14	1	93-8608	Washer	20	22	1
93-8543	Decompressor	18	15	1	93-8609	Arm - Pivot	20	23	1
93-8544	Camshaft Assembly	18	16	1	93-8610	Sleeve	20	24	1
93-8545	Key	18	17	1	93-8611	Governor Assembly	20	25	1
93-8546	Switch	19	1	1	93-8612	Washer	20	26	1
93-8547	Coil - Ignition	19	2	1	93-8613	Gasket - Carburetor	21	1	3
93-8548	Bolt - Flanged	19	3	2	93-8614	Insulator	21	2	1
93-8549	Screw	19	4	3	93-8615	Carburetor Assembly	21	3	1
93-8550	Bolt - Flanged	19	5	10	93-8616	Valve - Throttle	21	4	1
93-8551	Housing - Fan	19	6	1	93-8617	Valve - Choke	21	5	1
93-8552	Recoil Starter Assy.	19	7	1	93-8619	Screw Assembly	21	7	1
93-8553	Screw	19	8	1	93-8620	Screw - Assembly	21	8	1
93-8554	Pawl - Recoil	19	9	2	93-8621	Nozzle - Main	21	9	1
93-8555	Spring - Return	19	10	2	93-8622	Jet - Main #70	21	10	1
93-8556	Reel - Recoil	19	11	1	93-8624	Gasket	21	12	1
93-8557	Spring	19	12	1	93-8625	Float Chamber Assy.	21	13	1
93-8558	Grip	19	13	1	93-8626	Screw Assembly	21	14	1
93-8559	Case - Recoil	19	14		93-8627	Bolt	21	15	1
93-8560	Rope	19	15	1	93-8628	Bolt - Stud	21	16	2
93-8561	Ring - Retaining	19	16	1	93-8629	Clamp	21	17	1
93-8562	Guide - Pawl	19	17	1	93-8630	Tube	21	18	1
93-8563	Shroud - Engine	19	18	1	93-8631	Nut	22	8	3
93-8564	Collar	19	19	1	93-8631	Nut	20	18	1
93-8565	Shroud - Engine	19	20	1	93-8631	Nut	21	19	2
93-8566	Bolt - Flanged	19	21	1	93-8632	Bolt - Stud	21	20	2
93-8567	Pulley - Recoil	19	22	1	93-8633	Pipe - Intake	21	21	1
93-8568	Nut	19	23	1	93-8634	Air Filter Assembly	22	1	1
93-8569	Washer	19	24	1	93-8635	Case - Air Filter	22	2	1
93-8570	Flywheel	19	25	1	93-8636	Element - Air Filter	22	3	1
93-8571	Key	19	26	1	93-8637	Element - Air Filter	22	4	1
93-8572	Fan	19	27	1	93-8638	Cap - Air Filter	22	5	1
93-8573	Collar	19	28	3	93-8639	Washer	22	6	22
93-8574	Washer	19	29	3	93-8640	Bolt	22	7	2
93-8575	Bolt - Flanged	19	30	3	93-8642	Plate - Air Filter	22	9	1
93-8576	Clamp	19	31	1	93-8643	Muffler Assembly	22	10	1
93-8577	Screw - Pan Hd.	19	32	1	93-8644	Bolt	22	11	4
93-8578	Igniter	19	33	1	93-8645	Washer	22	12	4
93-8579	Washer	19	34	1	93-8646	Cover - Muffler	22	13	1
93-8580	Bracket	19	35	1	93-8647	Screw	22	14	4
93-8581	Lead - Wire	19	36	1	93-8648	Pipe - Tail	22	15	1
93-8582	Grommet	19	37	1	93-8649	Cover - Muffler	22	16	1
93-8583	Clamp	19	38	1	93-8650	Washer	22	17	2
93-8584	Plug - Spark	19	39	1	93-8651	Collar	22	18	1
93-8585	Cap - Spark Plug	19	40	1	93-8652	Pipe - Exhaust	22	19	1
93-8586	Terminal	19	41	1	93-8653	Bolt - Stud	22	20	2
93-8587	Panel - Control	20	1	1	93-8654	Gasket - Muffler	22	21	1
93-8588	Spring	20	2	2	93-8655	Washer - Spring	22	22	2
93-8589	Bolt	20	3	2	93-8656	Nut - Hex.	22	23	2
93-8590	Washer	20	4	1	93-8657	Gasket - Air Filter	22	24	1
93-8591	Spring	20	5	1	93-8658	Pipe	22	25	1
93-8592	Plate	20	6	1	93-8659	Tube	22	26	1

\*Not Illustrated

# TORO PART NUMBER INDEX (Cont.)

Part No.	Description	Pg. No.	Ref. No.	Qty.	Part No.	Description	Pg. No.	Ref. No.	Qty.
93-8660	Fuel Cap Assembly	23	1	1	251-336	Bearing - Ball	3	13	2
93-8661	Screw	23	2	2	251-338	Bearing	6	9	2
93-8662	Gasket	23	3	1	251-338	Bearing	9	30	1
93-8663	Spring	23	4	1	251-342	Bearing	6	26	1
93-8664	Clamp	23	5	2	251-342	Bearing - Self-Aligning	3	37	1
93-8665	Clamp	23	6	1	251-343	Bearing	9	9	1
93-8666	Tube	23	7	1	253-96	Seal	6	33	1
93-8667	Nut	23	8	1	253-96	Seal	3	35	1
93-8668	Washer	23	9	1	253-118	Seal - Oil	3	6	1
93-8669	Tap Assembly	23	10	1	253-159	Seal - Spring Lip	7	3	2
93-8670	Screw	23	11	1	253-160	Seal	6	8	4
93-8671	Seal - O-Ring	23	12	1	253-160	Seal	9	29	2
93-8672	Filter - Tap	23	13	1	253-161	Seal - V-Ring	6	16	2
93-8673	Gasket	23	14	1	253-163	Seal	6	25	1
93-8674	Cup - Tap	23	15	1	253-163	Seal	3	39	1
93-8675	Nut	23	16	1	256-206	Bushing	13	39	2
93-8676	Clamp	23	17	2	283-75	Pin - Clevis	9	20	1
93-8677	Tube	23	18	1	302-5	Fitting - Grease	14	2	2
93-8678	Bracket - Tank	23	19	1	302-5	Fitting - Grease	3	5	2
93-8679	Bolt - Flanged	23	20	4	302-5	Fitting - Grease	11	8	2
93-8680	Bolt - Flanged	23	21	2	302-5	Fitting - Grease	6	11	1
93-8681	Bracket	23	22	1	302-5	Fitting - Grease	2	29	2
93-8682	Tank - Fuel	23	23	1	302-11	Fitting - Grease	6	23	2
93-8683	Bolt	23	24	4	302-19	Fitting - Grease	6	7	2
93-8684	Filter - Fuel	23	25	1	302-55	Fitting - Grease	9	7	1
93-8685	Gauge - Fuel	23	26	1	302-64	Fitting - Grease	9	28	1
93-8686	Screw	23	27	2	321-2	Screw - Cap Hex. Hd.	9	39	3
93-8687	Decal - Choke	24	1	1	321-3	Screw - Cap Hex. Hd.	5	4	4
93-8688	Decal - Recoil	24	2	1	321-3	Screw - Cap Hex. Hd.	12	49	1
93-8689	Decal - Instruction	24	3	1	321-3	Screw - Cap Hex. Hd.	10	55	2
93-8690	Decal - Maintenance	24	4	1	321-4	Screw - Cap Hex. Hd.	3	27	1
93-8691	Decal - Model	24	5	1	321-8	Screw - Cap Hex. Hd.	13	9	1
93-8692	Decal - Warning	24	6	1	321-11	Screw - Cap Hex. Hd.	6	38	8
93-9001	Bellcrank Cover Assembly	12	*	1	321-20	Screw - Cap Hex. Hd.	4	57	4
93-9009	Bail Asm. (Europe)	13	41	1	322-2	Screw - Cap Hex. Hd.	2	31	4
93-9014	Pin - Actuator	3	19	1	322-3	Screw - Cap Hex. Hd.	6	18	10
93-9023	Cable - Throttle	13	1	1	322-3	Screw - Cap Hex. Hd.	9	47	1
93-9047	Drum	7	1	2	322-3	Screw - Cap Hex. Hd.	3	48	1
93-9356	Decal - Warning (Europe)	2	33	3	322-5	Screw - Cap Hex. Hd.	3	2	3
93-9389	Decal - Warning (Japan)	2	33	3	322-5	Screw - Cap Hex. Hd.	6	5	4
93-9391	Decal - Service (French)	5	10	1	322-5	Screw - Cap Hex. Hd.	7	13	8
93-9392	Decal - Service (Spanish)	5	10	1	322-5	Screw - Cap Hex. Hd.	9	36	4
93-9393	Decal - Service (German)	5	10	1	322-9	Screw - Cap Hex. Hd.	13	7	4
93-9394	Decal - Service (Japan)	5	10	1	322-9	Screw - Cap Hex. Hd.	7	10	8
94-3431	Module - Interlock (Europe)	12	50	1	322-9	Screw - Cap Hex. Hd.	1	17	2
94-5850	Spindle - Drum	7	2	1	322-9	Screw - Cap Hex. Hd.	11	25	4
94-5852	Hub - Drum	7	8	1	323-4	Screw - Cap Hex. Hd.	11	5	2
94-5860	Module - Interlock	12	50	1	323-4	Screw - Cap Hex. Hd.	1	18	12
94-5861	Bracket - Module	12	48	1	323-5	Screw - Cap Hex. Hd.	9	2	4
94-5862	Harness - Wire	11	24	1	323-5	Screw - Cap Hex. Hd.	1	7	4
94-5865	Harness - Wire (Europe)	11	24	1	323-7	Screw - Cap Hex. Hd.	6	35	2
94-6312	Decal - Console (Japan)	13	31	1	323-11	Screw - Cap Hex. Hd.	11	34	1
94-6843	Jet - Pilot #38	21	6	1	323-18	Screw - Cap Hex. Hd.	2	45	2
94-6844	Float Assembly	21	11	1	323-34	Screw - Cap Hex. Hd.	13	33	2
94-6845	Screw	21	22	1	3210-7	Screw - Cap Hex. Hd.	13	21	2
94-6846	Clamp	21	23	1	3218-2	Nut - Jam	9	13	3
94-6847	Jet - Main #68, High	21	10	1	3218-2	Nut - Jam	1	22	2
233-69	Knob	3	29	1	3218-20	Nut - Hex. Jam (Europe)	13	45	2
237-160	Plug	4	55	1	3218-20	Nut - Jam	11	15	2
2410-18	Plug	16	2	1	3219-1	Nut-Hex	15	9	4
2412-93	Clamp - R	11	20	1	3219-14	Nut	16	3	1
2412-139	Clamp - Hose	9	41	1	3220-5	Nut - Jam	3	17	1
2412-140	Clamp - Hose	9	42	1	3220-6	Nut - Jam	2	40	2
251-257	Bearing	7	4	2	3231-5	Screw - Carriage	2	32	2
251-318	Bearing - Ball	3	4	1	3242-4	Screw - Set	1	21	2

\*Not Illustrated

# TORO PART NUMBER INDEX (Cont.)

3318-269

Part No.	Description	Pg. No.	Ref. No.	Qty.	Part No.	Description	Pg. No.	Ref. No.	Qty.
3253-3	Washer - Lock	3	22	1	3290-414	Washer	3	26	1
3253-3	Washer - Lock	9	40	5	3290-467	Pin - Cotter, Hair	1	15	2
3253-4	Washer - Lock	7	9	16	3290-485	Washer - Wave	3	40	1
3253-4	Washer - Lock	9	12	8	3295-15	Rivet	15	3	11
3253-4	Washer - Lock	6	19	10	3296-28	Nut - Lock Insert	13	37	2
3253-4	Washer - Lock	3	47	2	3296-29	Nut - Lock	3	3	2
3253-4	Washer - Spring Lock	13	22	2	3296-29	Nut - Lock	6	6	4
3253-4	Washer - Spring Lock	11	37	7	3296-29	Nut - Lock	1	11	2
3253-21	Washer - Lock	9	3	4	3296-29	Nut - Lock	7	17	4
3253-21	Washer - Spring Lock	11	6	2	3296-29	Nut - Lock	13	26	4
3253-21	Washer - Spring Lock	1	8	16	3296-29	Nut - Lock	11	30	4
3253-21	Washer - Spring Lock	13	34	2	3296-33	Nut - Lock	7	7	1
3254-4	Washer - Lock I.T.L.W.	3	16	1	3296-39	Nut	3	33	2
3254-6	Washer - Int. Tooth Lock	2	44	2	3296-39	Nut - Lock	1	23	2
3254-6	Washer - Lock I.T.L.W.	9	22	2	3296-39	Nut - Lock	6	34	2
3254-8	Washer - Lock I.T.L.W.	15	8	4	3296-39	Nut - Lock	12	46	1
3254-8	Washer - Lock I.T.L.W.	6	39	8	3296-42	Nut - Lock	5	6	4
3254-8	Washer - Lock I.T.L.W.	4	58	4	3296-42	Nut - Lock	13	11	2
3255-8	Washer - Lock	2	30	4	3296-42	Nut - Lock	9	15	1
3255-9	Washer - External Lock	11	21	2	3296-42	Nut - Lock	3	21	1
3256-2	Washer - Flat	11	2	1	3296-42	Nut - Lock	11	41	4
3256-22	Washer - Flat	5	5	6	3296-56	Nut - Lock	13	3	1
3256-22	Washer - Flat	10	58	2	3296-57	Nut	6	14	2
3256-23	Washer - Flat	7	16	4	3296-57	Nut - Lock	9	17	1
3256-23	Washer - Flat	13	23	2	32120-11	Ring - Retaining	3	8	1
3256-24	Washer - Flat	9	4	4	32120-42	Ring - Retaining	12	45	1
3256-24	Washer - Flat	1	9	6	32120-42	Ring - Retaining	9	48	1
3256-24	Washer - Flat	13	35	2	32120-42	Ring - Snap	6	42	2
3256-56	Washer - Flat	11	7	10	32120-42	Ring - Snap	3	45	1
3257-32	Key	9	18	1	32122-22	Screw - Phill. Truss Hd.	16	2	1
3257-32	Key - Woodruff	7	18	2	32128-48	Nut - Flange	5	16	2
3259-15	Screw - Drive	3	23	1	32144-73	Screw - Hex. Washer Hd.	11	29	1
3272-6	Pin - Cotter	9	23	2	32144-73	Screw - Self Tapping	5	8	5
3272-8	Pin - Cotter	9	24	1	32151-89	Ring - Retaining	3	14	1
3289-23	Screw - Flat Hd.	3	32	2	32151-92	Ring - Retaining	3	38	1
3290-378	Tie - Cable	13	40	4	32151-95	Ring - Retaining	3	15	2

## PRODUCT CHANGES

In an effort to make improvements available to TORO owners as quickly as possible, minor changes are incorporated into Toro's products from time to time that do not become immediately shown in the Parts Catalog. If such a change has been made in your unit, which is not reflected in your manual, see your TORO Distributor or his Authorized TORO Service Dealer for information and part numbers.

## IDENTIFICATION AND ORDERING

### MODEL AND SERIAL NUMBERS

The Greensmaster 1000 has two identification numbers; a model number and a serial number. The two numbers are stamped on a plate which is located on the main frame side plate. In any correspondence concerning the Greensmaster 1000, supply model and serial numbers to assure that correct information and replacement parts are obtained.

To order replacement parts from an Authorized TORO Service Dealer, supply the following information:

1. Model and serial number of the Greensmaster 1000.
2. Part number, description, and the quantity of part(s) desired.

**NOTE:** Do not order by reference number if a parts catalog is being used; use the PART NUMBER.

## TABLE OF CONTENTS

Description	Page	Description	Page
Frame Assembly .....	1-2	Scraper Options .....	15
Reel Drive Assembly .....	3-4	Special Tools .....	16
Reel Assembly .....	5	Engine Crankcase Assembly .....	17
Drum Drive Assembly .....	6	Engine Camshaft & Valves Assembly .....	18
Drum & Basket Assembly .....	7	Engine Ignition Assembly .....	19
Differential Assembly		Engine Governor Assembly .....	20
Peerless Model No. 100-111 .....	8	Engine Carburetor Assembly .....	21
Countershaft Assembly .....	9-10	Engine Air Filter & Muffler Assembly .....	22
Engine & Bellcrank Assembly .....	11-12	Engine Fuel Tank Assembly .....	23
Handle Assembly .....	13	Engine Decals Assembly .....	24
Cutting Unit Roller Options .....	14	TORO Part Number Index .....	25-29

Japanese parts kit number 94-5895 contains all of the individual parts on the preceding pages designated as (Japan).



