



Count on it.

Parts Catalog

30in Stand-On Aerator

Model No. 23518—Serial No. 312000001 and Up

Model No. 33518—Serial No. 312000001 and Up



Ordering Replacement Parts

To order replacement parts, please supply the part number, the quantity, and the description of each part desired.

Understanding Reference Numbers

Each identified part in an illustration has a reference number. The reference number for a part also appears in the parts list, along with other information about the part.

This catalog uses two special reference number formats, one to indicate parts in a service assembly and another to indicate the quantity of a given part in an illustration.

Service Assembly Reference Numbers

Parts in service assemblies have reference numbers in the form a:b. The a represents the reference number of the entire service assembly and the b represents a sequential number unique to each part within the service assembly.

For example, a wheel assembly might be identified by reference number 6, the tire by 6:1, the valve by 6:2, and the wheel by 6:3. When you order the assembly identified by reference number 6, you receive all parts identified by reference numbers 6:1, 6:2, and 6:3. However, you may also order any part individually. Reference numbers of this type appear in illustration and in parts lists.

Reference Numbers Indicating Quantity

In an illustration, if a reference number indicates more than one part, the reference number has the form nX y. The n represents the quantity of the part, the X is the multiplication symbol, and the y represents the reference number.

For example, in an illustration, the reference number 2X 37 means that two of the parts identified by reference number 37 are indicated.

List of Abbreviations

AR: as required

ASM: assembly

BBC: blade brake control

BHTF: button head thread forming

CARR: carriage

CCW: counter clockwise

CW: clockwise

DEG: degrees

DPA: Dual Point Adjustment

ECM: electronic control module

EXT: external

FH: flat head

GA: gauge

HD: heavy-duty

HF: hex flange

HH: hex head

HHF: hex head flange

HHFTF: hex head flange thread forming

HJ: hex jam

HLH: hex lag head

HOC: height-of-cut

HSBH: hex socket button head

HSFH: hex socket flat head

HSH: hex socket head

HWH: hex washer head

HWTF: hex washer head thread forming

HYD: hydraulic

LH: left hand

LPG: Liquid Propane Gas

NI: nylon insert

NPTF: national pipe thread fine

PFH: phillips flat head

PPH: phillips pan head

PPHTF: phillips pan head thread forming

PRH: phillips round head

PTH: phillips truss head

PTO: power-take-off

RH: right hand

ROPS: roll-over protection system

RRB: rear roller brush

SFH: slotted fillister head

SHH: slotted hex head

SHWH: slotted hex washer head

SPH: slotted pan head

SQH: square head

SRH: slotted round head

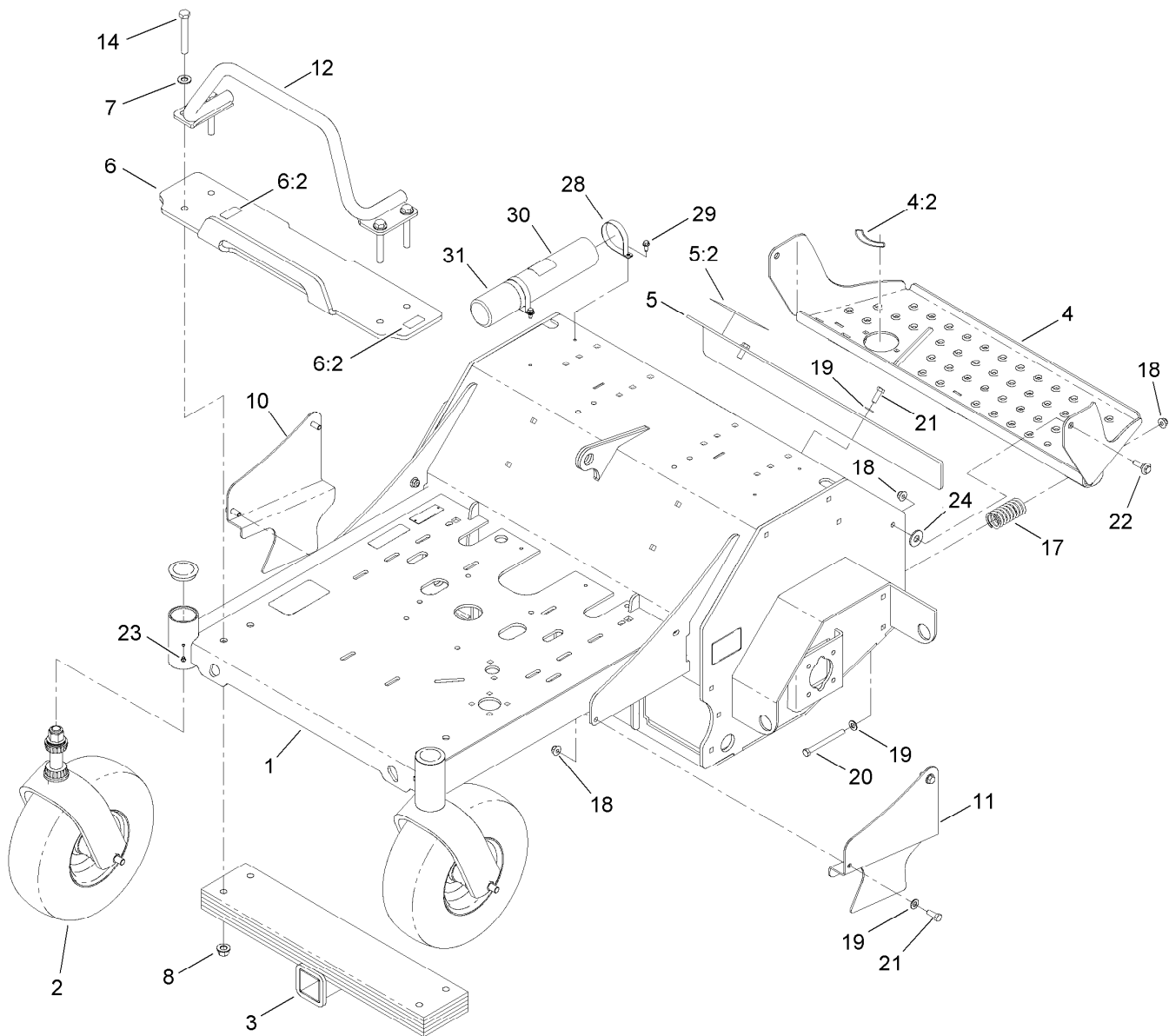
STD: standard

TAP: self tapping

TTH: torx truss head

Contents

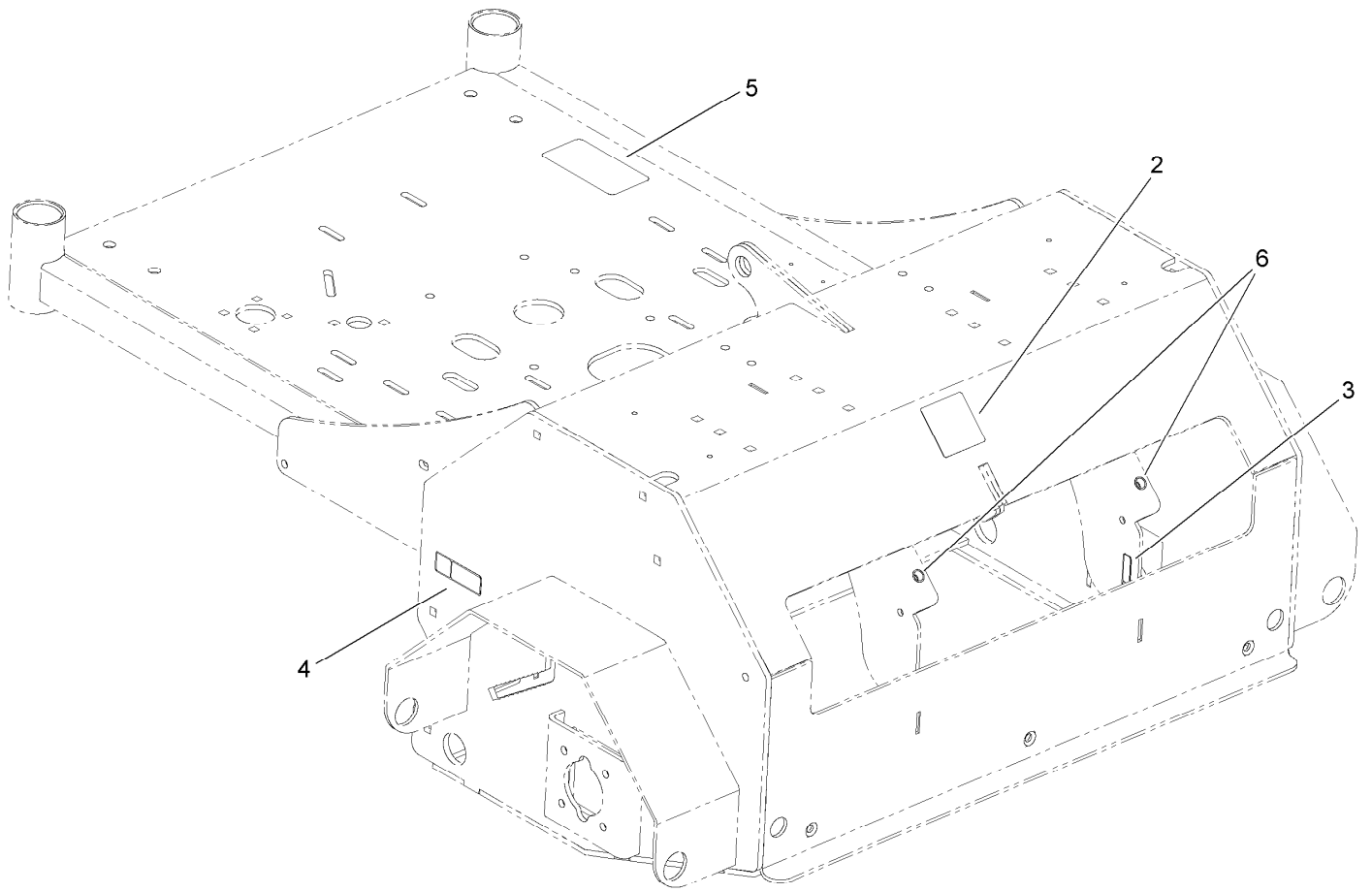
Main Frame Assembly	4
Main Frame Decal Assembly No. 116-7298	5
Caster Wheel and Fork Assembly	6
Tower Assembly	7
Ground Drive Assembly	8
RH Transaxle Assembly No. 116-6614	10
LH Transaxle Assembly No. 116-6615	11
Axle and Bearing Assembly No. 116-7645	12
Tine Assembly	13
RH Tine Wheel Assembly No. 116-6738	14
LH Tine Wheel Assembly No. 116-6739	15
Fuel Assembly	16
Motion Control Assembly	17
Electrical Assembly	18
Auxiliary Hydraulic Assembly	19
Engine Assembly	21



Main Frame Assembly

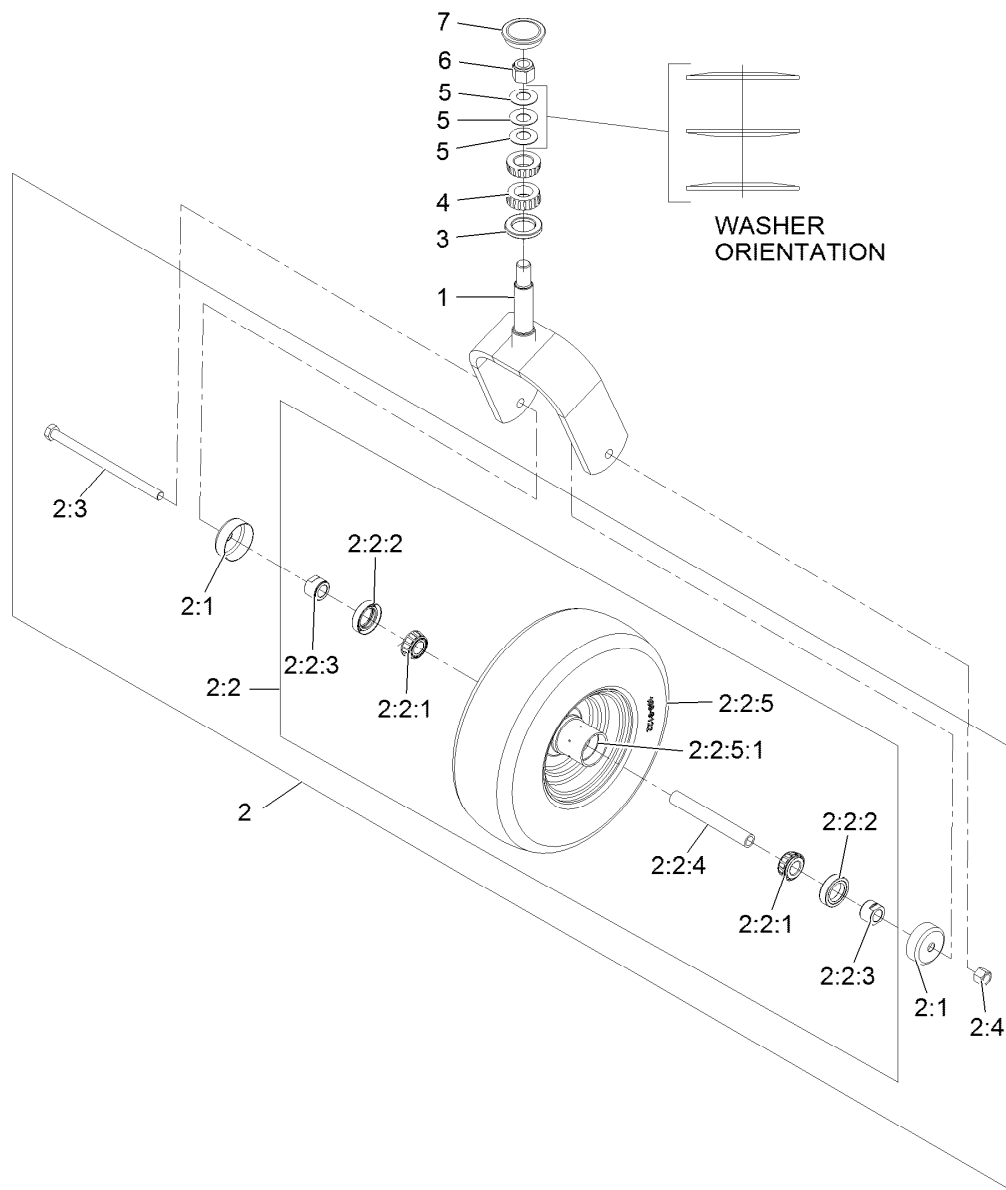
Ref.	Part Number	Qty.	Description	Ref.	Part Number	Qty.	Description
1	116-7298	1	Main Frame And Decal ASM	12	116-6763-03	1	Guard-Muffler
2		2	Front Caster ASM W/Fork ●	14	325-14	4	Screw-HH
3	116-6536-01	1	Weight	17	116-6767	3	Spring-Compression
4	116-6986	1	Platform ASM	18	104-8301	9	Nut-Flange, NI
4:2	116-6460	1	Decal-Tine Ground Engagement	19	3256-24	9	Washer-Flat
5	116-7300	1	Access Cover ASM	20	323-16	3	Screw-HH
5:2	121-6163	1	Decal-Tine Ground Operation Ce	21	323-6	6	Screw-HH
6	116-7299	1	Weight Mount Plate ASM	22	614672	2	Bolt-Shoulder
6:2	115-2047	2	Decal-Surface, Hot	23	1-811010	2	Plug
7	3256-26	4	Washer-Flat	24	3256-6	2	Washer-Flat
8	99-5107	4	Nut-Lock	28	107-1865	2	R-Clamp
10	116-6612-01	1	Guard-Chain, RH	29	32144-10	2	Screw-HWH
11	116-6611-01	1	Guard-Chain, LH	30	104-7050	1	Tube-Manual
				31	104-7048	1	Cap-Housing

● Not serviced separately



Main Frame Decal Assembly No. 116-7298

<i>Ref.</i>	<i>Part Number</i>	<i>Qty.</i>	<i>Description</i>
2	121-6150	1	Decal-Warning, Aerator
3	120-9570	1	Decal-Warning
4	121-6161	2	Decal-Danger
5	116-6462	1	Decal-Belt Routing
6	32148-10	2	Insert-Nut

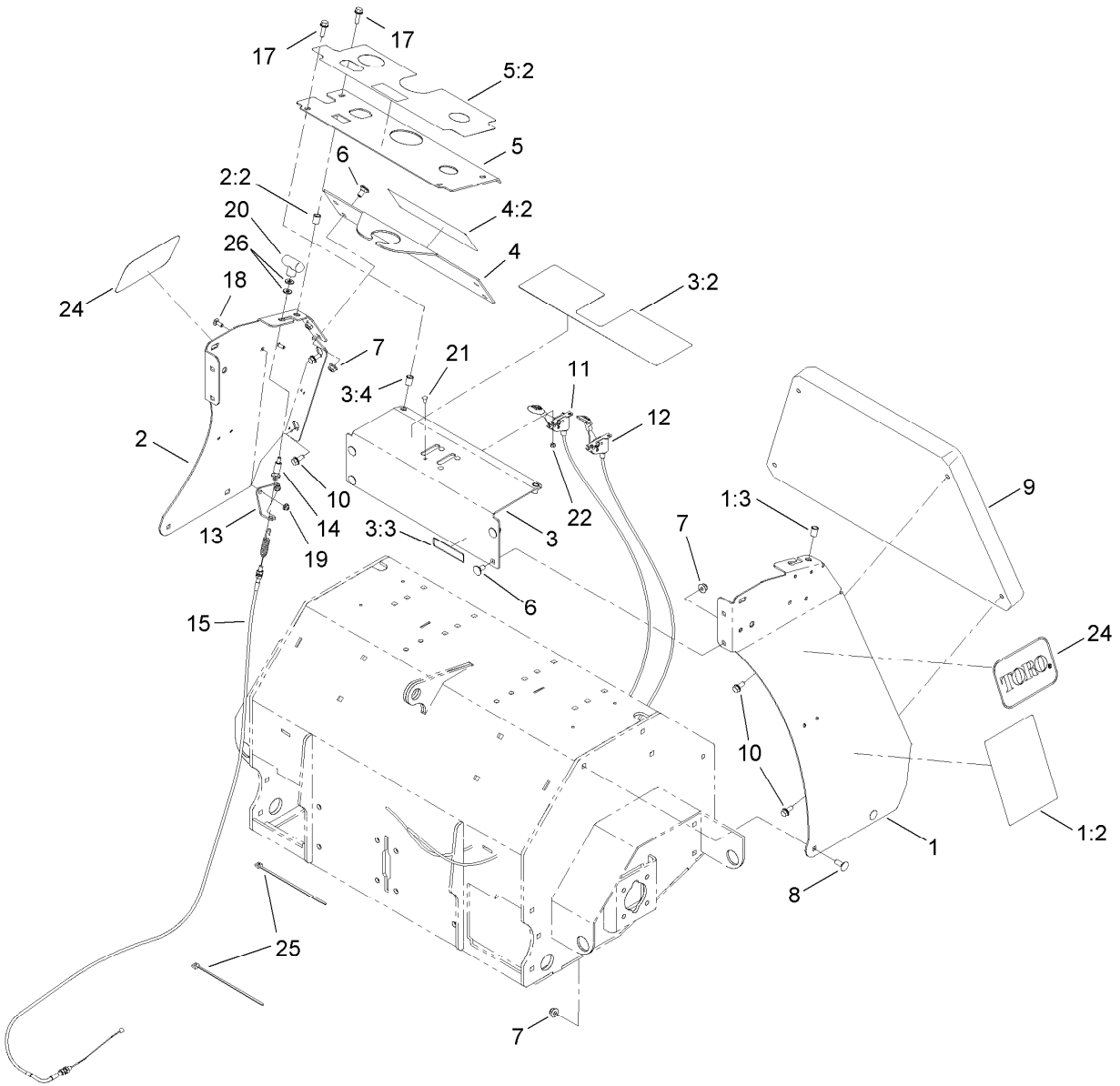


Caster Wheel and Fork Assembly

Ref.	Part Number	Qty.	Description	Ref.	Part Number	Qty.	Description
1	116-1963-01	1	Caster	2:2:5:1	1-633584	1	Bearing-Cup
2	109-9126	1	Wheel And Tire ASM	2:3	325-42	1	Screw-HH
2:1	103-2768	2	Guard-Seal	2:4	3296-23	1	Nut-Lock, NI
2:2		1	Wheel And Tire ASM ●	3	1-543511	1	Seal-Grease
2:2:1	1-633585	2	Bearing-Cone Tapered Roller	4	1-543509	2	Cone-Bearing Tapered Roller
2:2:2	103-0063	2	Seal-Double Lip	5	1-633508	3	Washer-Spring Disc
2:2:3	103-3051	2	Spacer-Nut ■	6	3296-51	1	Nut-Lock, NI
2:2:4	103-3155	1	Axle-Caster	7	103-4882	1	Cap-Grease
2:2:5		1	Wheel And Tire ASM ●				

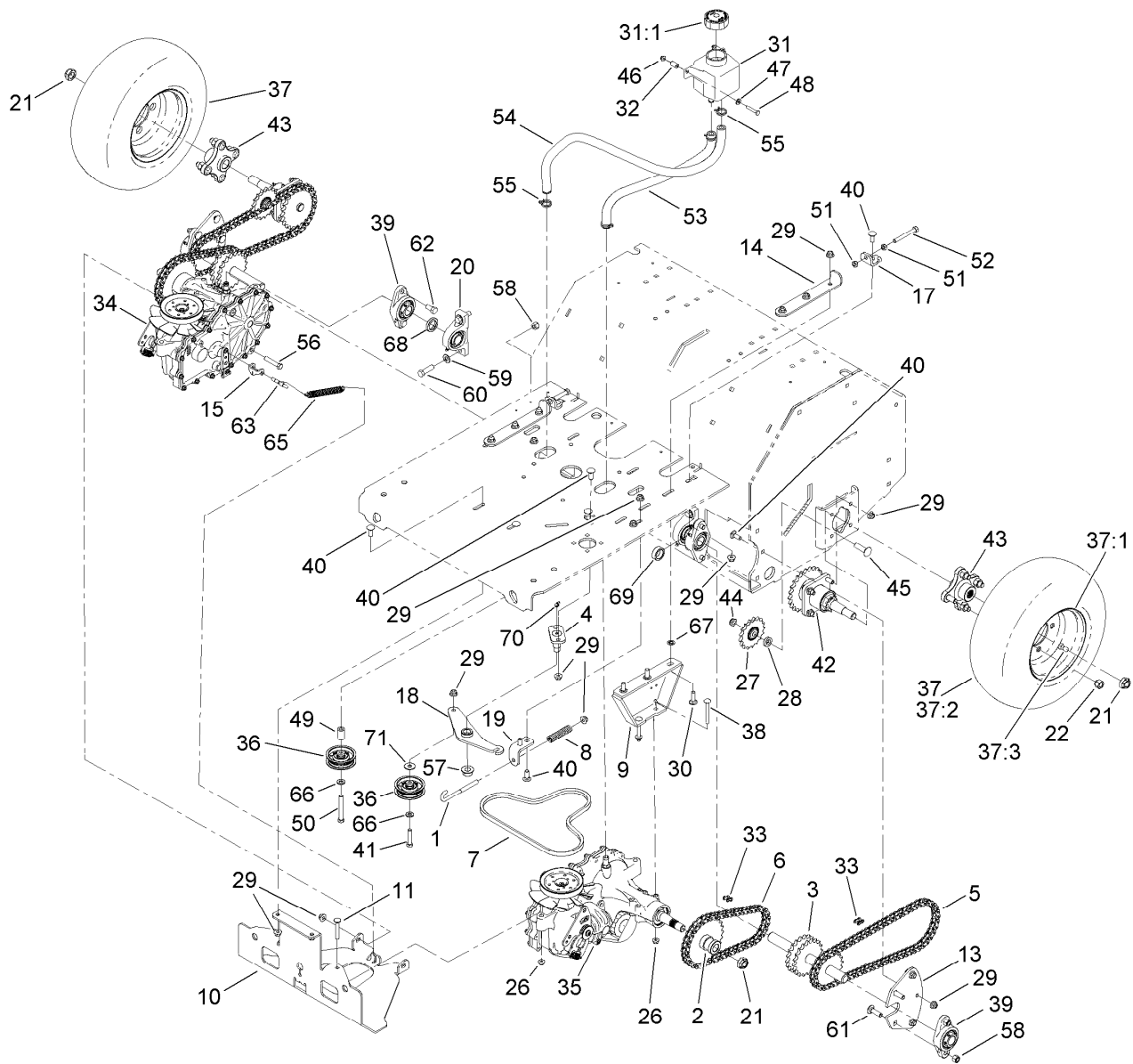
● Not serviced separately

■ Use Pro-Lock, Nut Type (P/N 1-840022, .5ml tube) on threads.



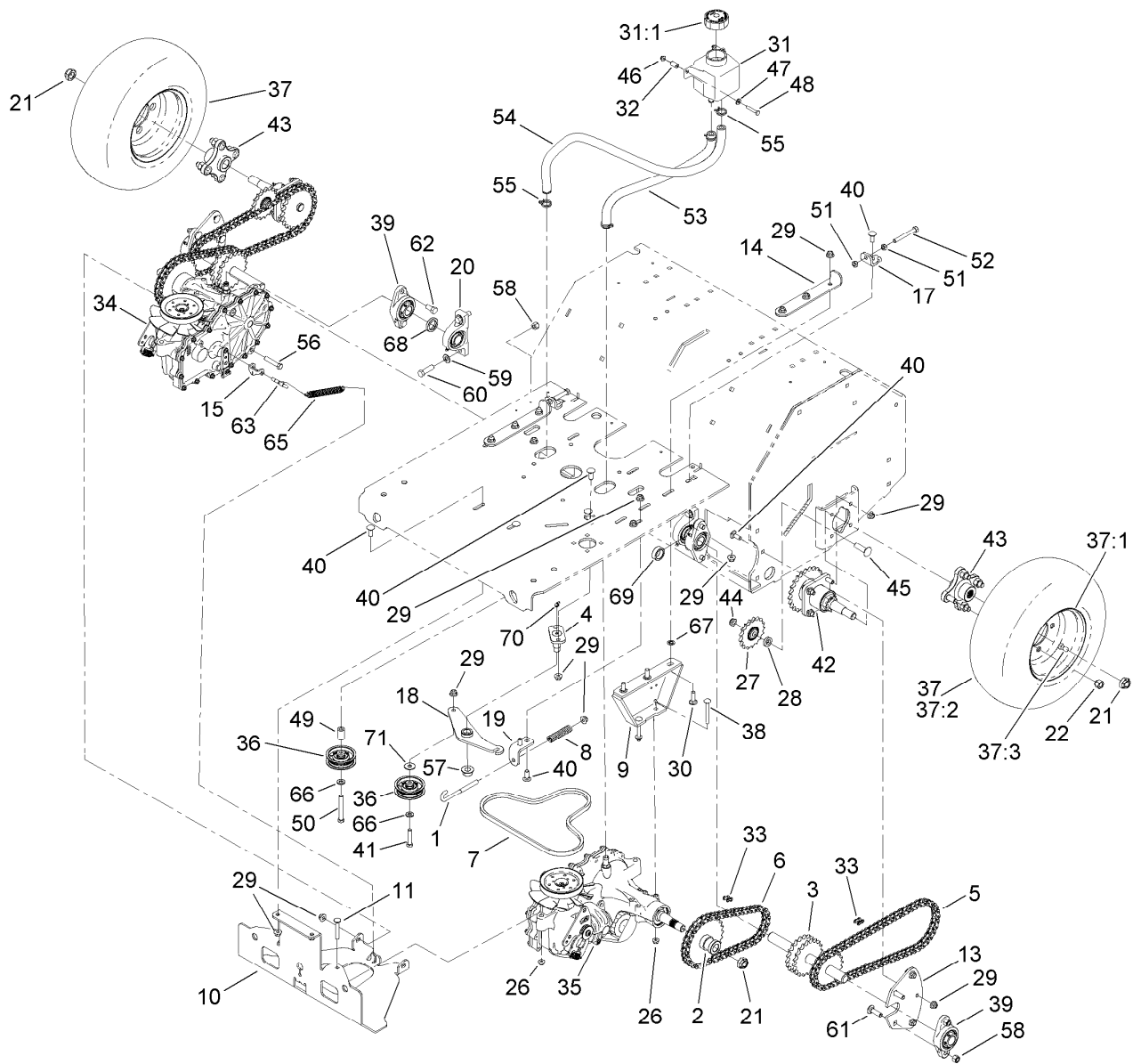
Tower Assembly

Ref.	Part Number	Qty.	Description	Ref.	Part Number	Qty.	Description
1	116-7202	1	LH Side Panel ASM	9	116-6959	1	Cushion-Black
1:2	121-6160	1	Decal-Service Aid, Ce	10	3234-5	4	Screw-HHF
1:3	32148-7	1	Nut-Insert	11	109-9147	1	Control-Choke
2	116-7657	1	RH Side Panel ASM	12	109-3958	1	Control-Throttle
2:2	32148-7	1	Nut-Insert	13	116-6630	1	Bracket-Brake Cable
3	116-6784	1	Plate ASM	14	116-7504	1	Link-Brake Cable
3:2	121-6164	1	Decal-Warning, Control Panel	15	116-7503	1	Cable-Brake
3:3	121-6162	1	Decal-Warning, Tines	17	3234-29	4	Screw-HHF
3:4	32148-7	2	Nut-Insert	18	3229-1	2	Bolt-CARR
4	116-6965	1	Knee Pad Bracket ASM	19	104-7201	2	Nut-HF
4:2	121-6166	1	Decal-Danger	20	116-7607	1	Knob-Tee
5	116-7617	1	Console ASM	21	1-807513	4	Bolt-CARR
5:2	116-7612	1	Decal-Control Panel Danger	22	3296-2	4	Nut-Lock, NI
6	3231-1	8	Screw-CARR	24	62-5550	2	Decal
7	104-8301	12	Nut-Flange, NI	25	1-303335	2	Tie-Plastic
8	3231-2	4	Bolt-CARR	26	3256-2	2	Washer-Flat



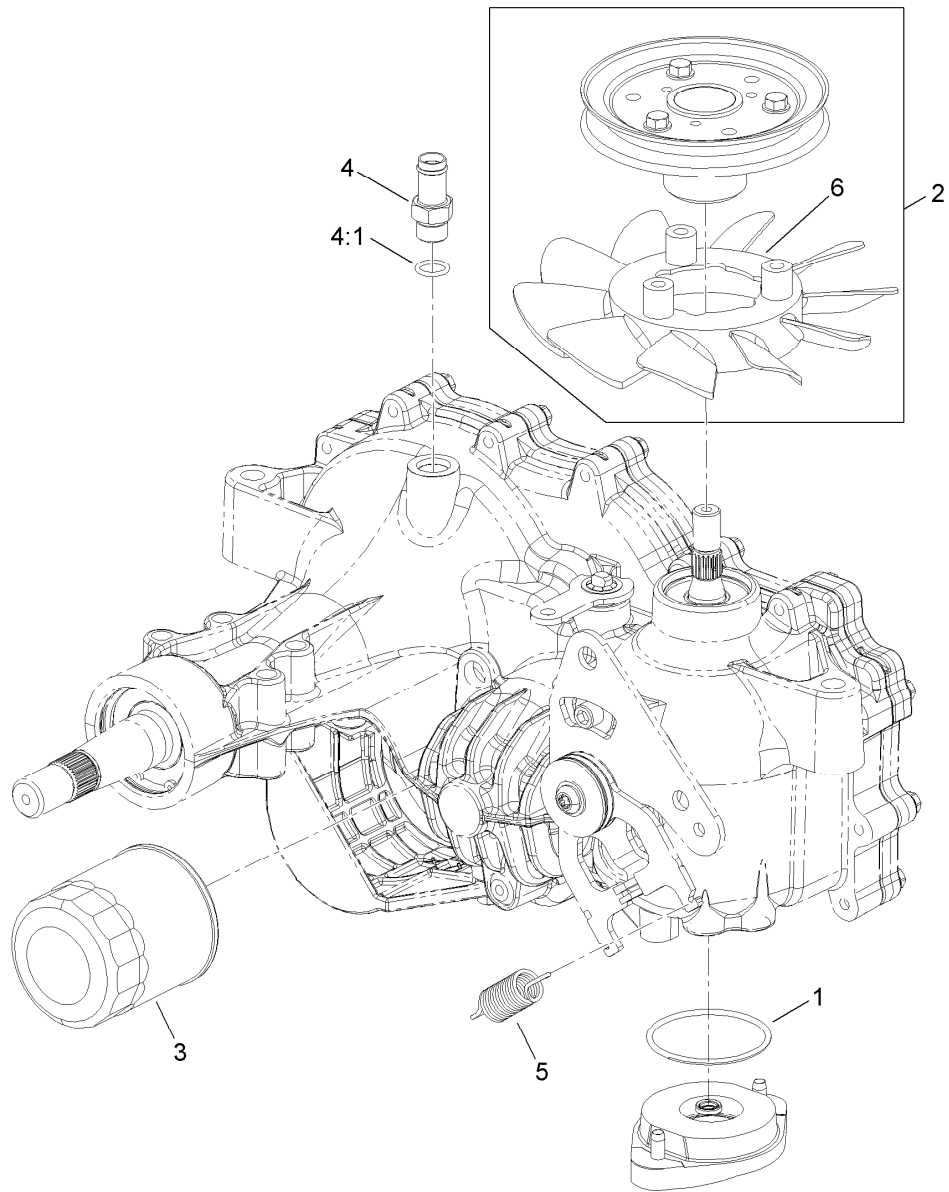
Ground Drive Assembly

Ref.	Part Number	Qty.	Description	Ref.	Part Number	Qty.	Description
1	116-6740	1	Hook-J	26	104-8300	6	Nut-Flange, NI
2	116-6624	2	Hub-Chain Drive	27	116-6719	2	Sprocket-Idler, 17T
3	116-6627	2	Jackshaft	28	104-8417	2	Washer
4	116-6735-03	1	Pivot-Idler	29	104-8301	33	Nut-Flange, NI
5	116-6895	2	Chain-Roller, #50	30	3231-25	6	Bolt-CARR
6	116-6896	2	Link-#50 Roller Chain, 47	31	109-2250	1	Vent-Tank, Hydro
7	1-653333	1	Belt-Blower, 48 Inch	31:1	109-3320	1	Cap-Reservoir, HYD
8	116-6771	1	Spring-Compression	32	49-0390	2	Spacer
9	116-6572-03	2	Mount-Transmission	33	116-6897	4	Link-Connecting, #50
10	116-7588-03	1	Guard-Transmission	34	116-6614	1	RH Transmission ASM
11	3230-7	2	Bolt-CARR	35	116-6615	1	LH Transmission ASM
13	116-6596-01	2	Plate-Jackshaft	36	116-6760	2	Pulley-Idler Flat
14	116-6619	2	Plate-Transmission, Adjustment	37	116-6932	2	Tire ASM (16 X 6.50-8)
15	116-7597	1	Yoke-Park Brake	37:1	116-6977	1	Rim (8 X 5.375)
17	116-6723	2	Bracket-Hydro, Adjust	37:2	116-6978	1	Tire (16 X 6.50-8, 4 Ply)
18	116-6568	1	Idler Arm ASM	37:3	232-27	1	Stem-Valve
19	116-6724	1	Bracket-Idler Spring	38	3230-9	4	Screw-CARR
20	116-6756	2	Bearing-Pillow Block	39	116-6777	4	Bearing-Flange, 2 Bolt
21	116-2839	4	Nut-Lock	40	3231-2	14	Bolt-CARR
22	242-50	8	Nut-Lug	41	323-9	1	Screw-HH
				42	116-7645	2	Axle And Bearing ASM



Ground Drive Assembly (continued)

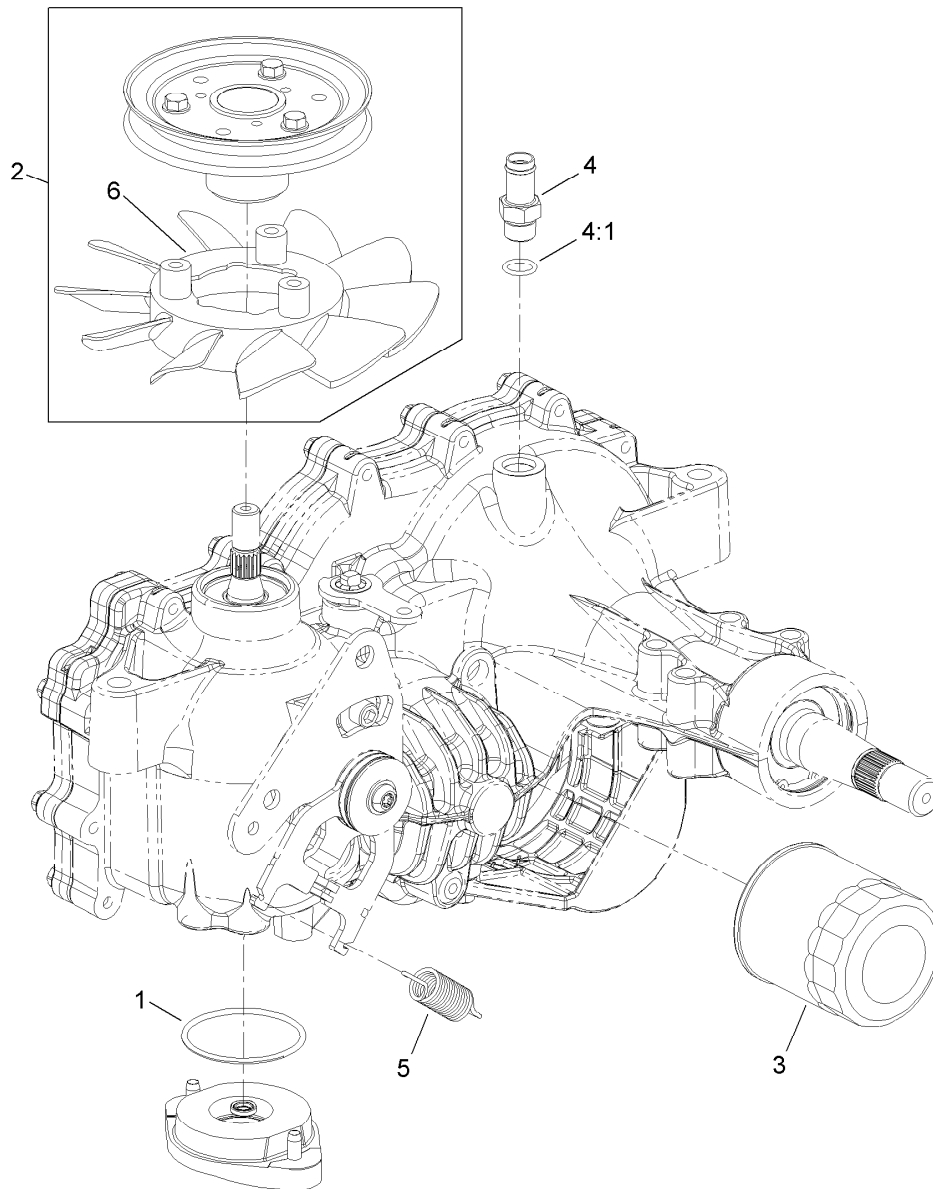
<i>Ref.</i>	<i>Part Number</i>	<i>Qty.</i>	<i>Description</i>	<i>Ref.</i>	<i>Part Number</i>	<i>Qty.</i>	<i>Description</i>
43	116-3872	2	Hub-Offset	57	109-7033	1	Nut-Flange, Centerlock
44	3296-45	2	Nut-Lock, NI	58	3296-48	8	Nut-Lock, NI
45	3233-14	2	Screw-CARR	59	3256-25	4	Washer-Flat
46	104-7201	2	Nut-HF	60	324-6	4	Screw-HH
47	3256-22	2	Washer-Flat	61	3232-3	4	Bolt-CARR
48	321-9	2	Screw-HH	62	116-7109	4	Screw-HH
49	116-7598	1	Spacer-Idler	63	116-7596	1	Pin-Park Brake
50	323-14	1	Screw-HH	65	76-4660	1	Spring-Door
51	3217-7	4	Nut-Hex	66	3256-24	2	Washer-Flat
52	99-8664	2	Screw-HH	67	107-3154	6	Nut-Push
53	116-6775	1	Hose-Hydraulic	68	116-7253	1	Spacer
54	116-6776	1	Hose-Hydraulic	69	116-7254	1	Spacer
55	109-3322	4	Clamp-Hose	70	302-61	1	Fitting-Grease
56	323-10	2	Screw-HH	71	52-2860	1	Washer



RH Transaxle Assembly No. 116-6614

<i>Ref.</i>	<i>Part Number</i>	<i>Qty.</i>	<i>Description</i>
1	109-3540	1	O-Ring, Seal
2	116-6743	1	Fan And Pulley Kit
3	109-3321	1	Element-Oil Filter, HYD
4	109-3278	1	Adapter-Straight
4:1	1-603921	1	O-Ring
5	109-5592	1	Spring-Extension
6	116-6742	1	Fan-Offset, Hydrogear
99	109-3537	1	Complete Seal Kit ●

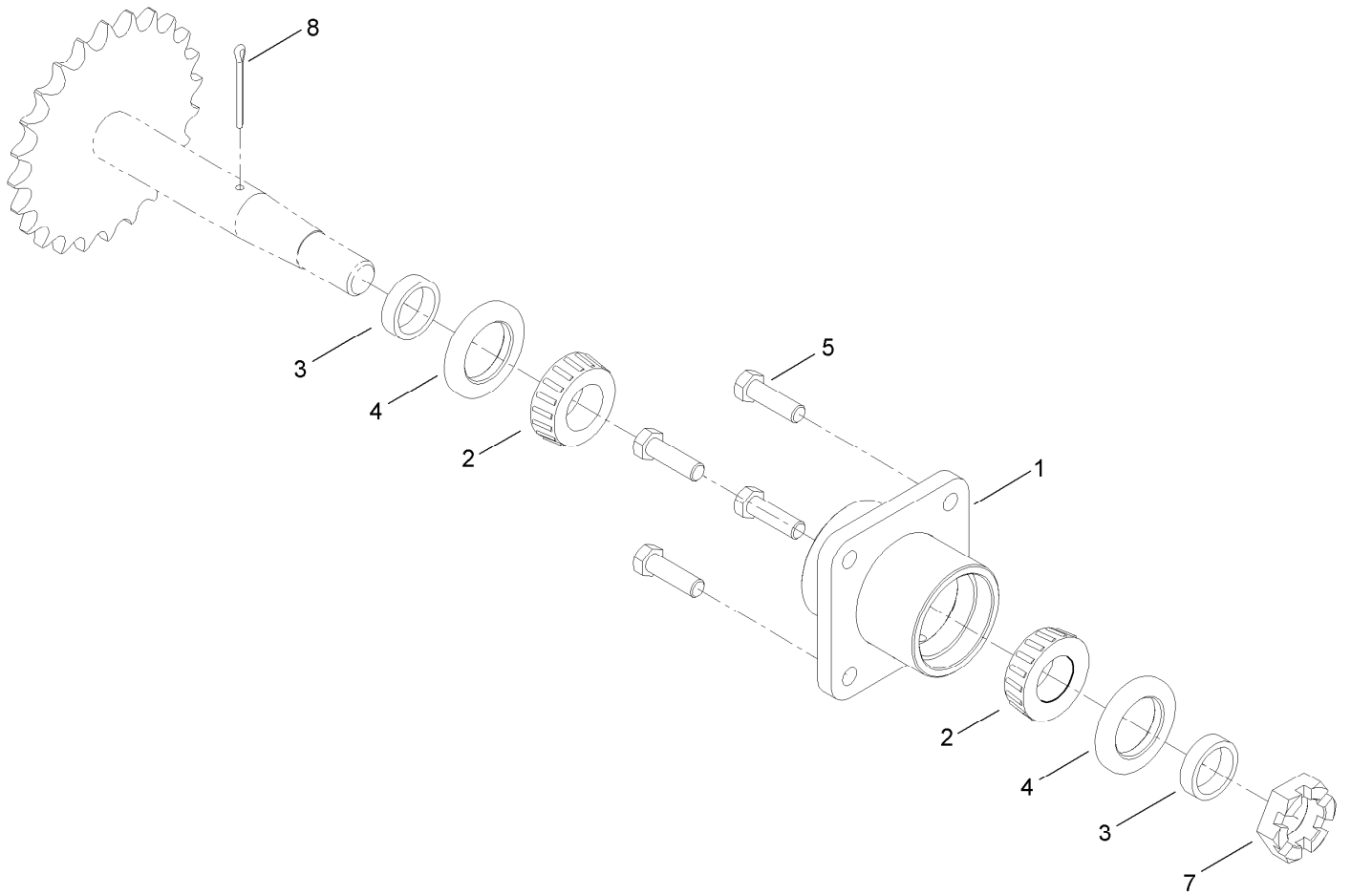
● Not illustrated



LH Transaxle Assembly No. 116-6615

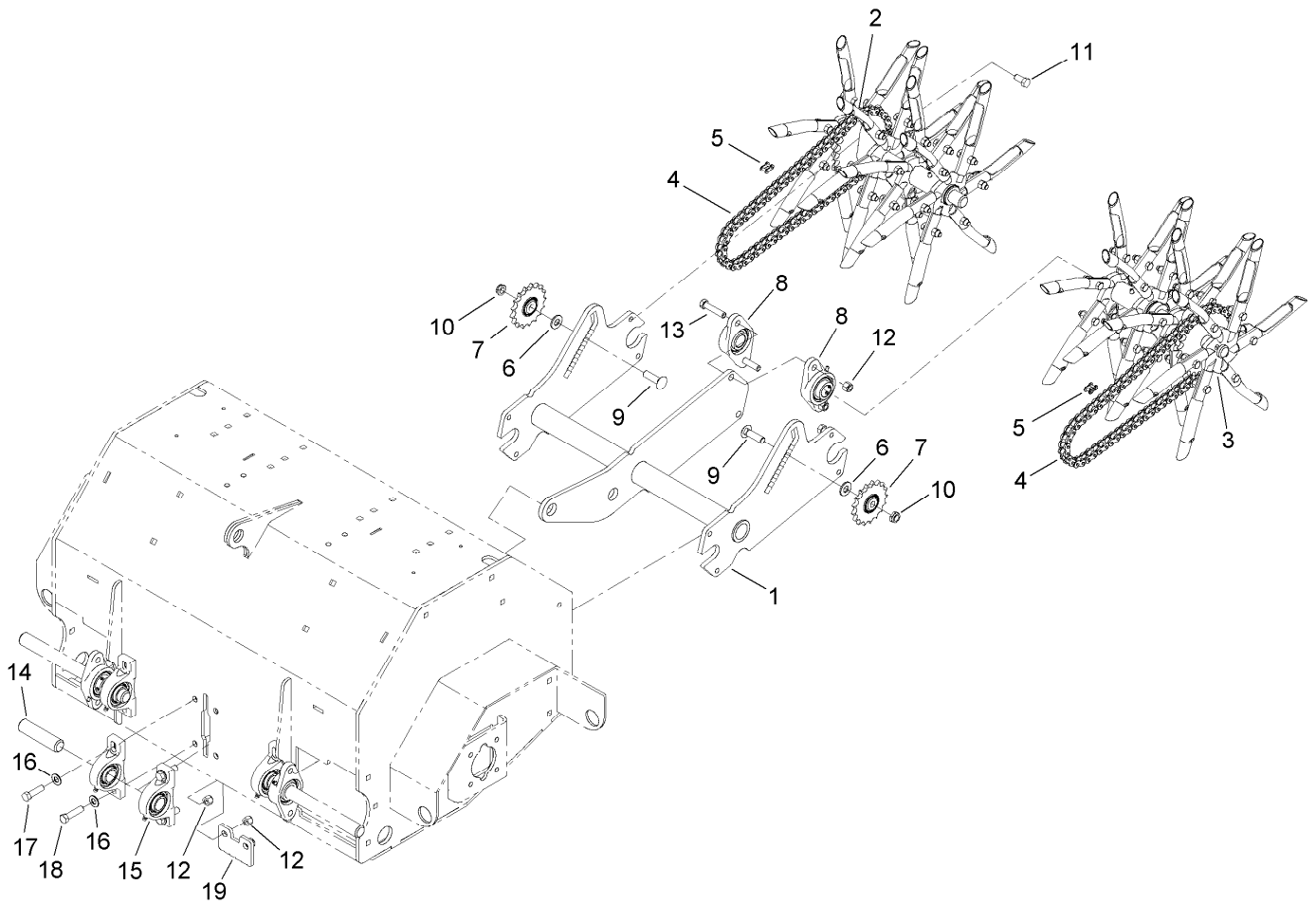
<i>Ref.</i>	<i>Part Number</i>	<i>Qty.</i>	<i>Description</i>
1	109-3540	1	O-Ring, Seal
2	116-6743	1	Fan And Pulley Kit
3	109-3321	1	Element-Oil Filter, HYD
4	109-3278	1	Adapter-Straight
4:1	1-603921	1	O-Ring
5	109-5592	1	Spring-Extension
6	116-6742	1	Fan-Offset, Hydrogear
99	109-3537	1	Complete Seal Kit ●

● Not illustrated



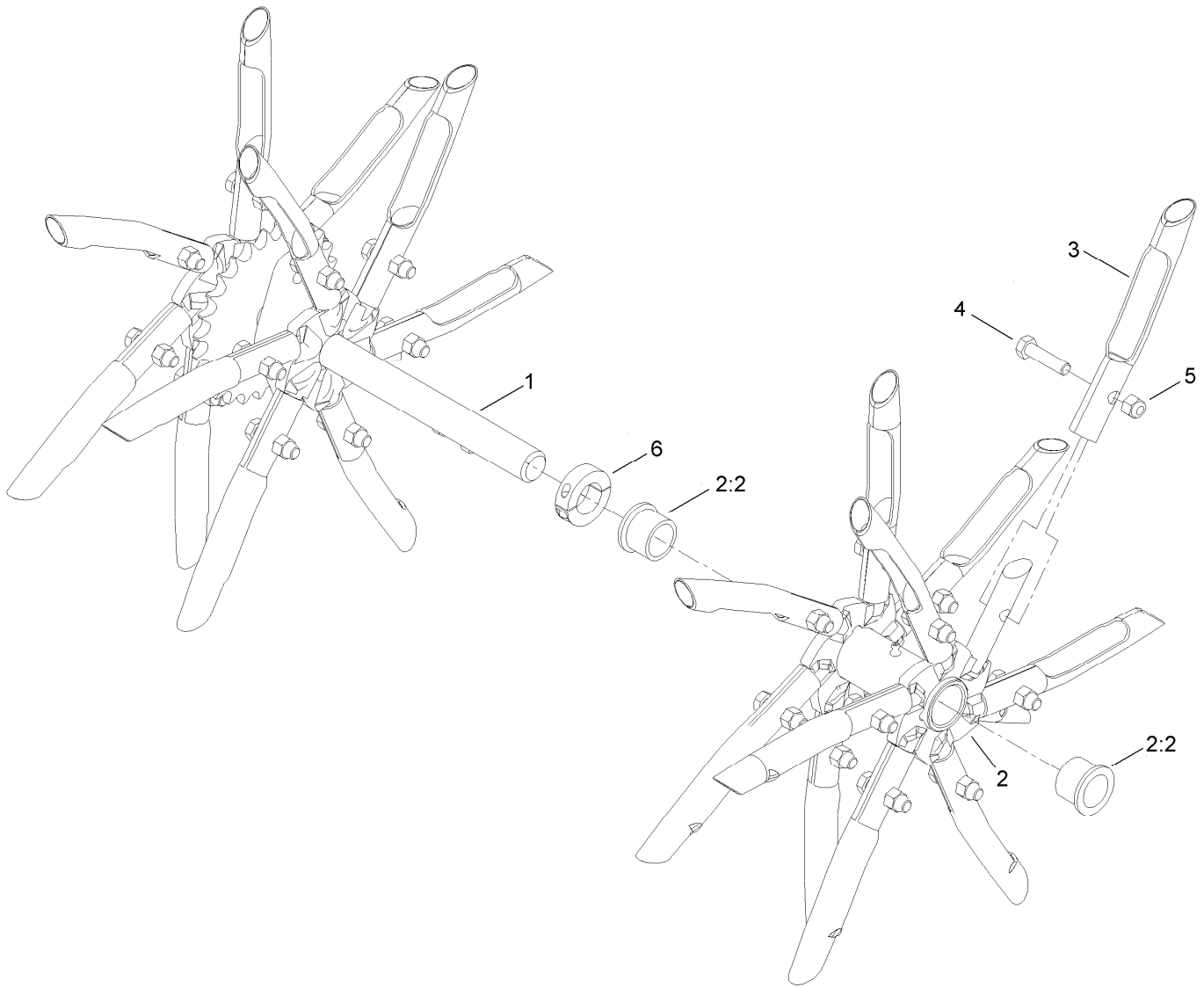
Axle and Bearing Assembly No. 116-7645

<i>Ref.</i>	<i>Part Number</i>	<i>Qty.</i>	<i>Description</i>
1	116-6746-01	1	Mount-Bearing, Wheel
2	1-543509	2	Bearing-Roller, Tapered
3	116-6758	2	Spacer
4	1-543511	2	Seal-Grease
5	323-7	4	Screw-HH
7	99-3139	1	Nut
8	3272-13	1	Pin-Cotter



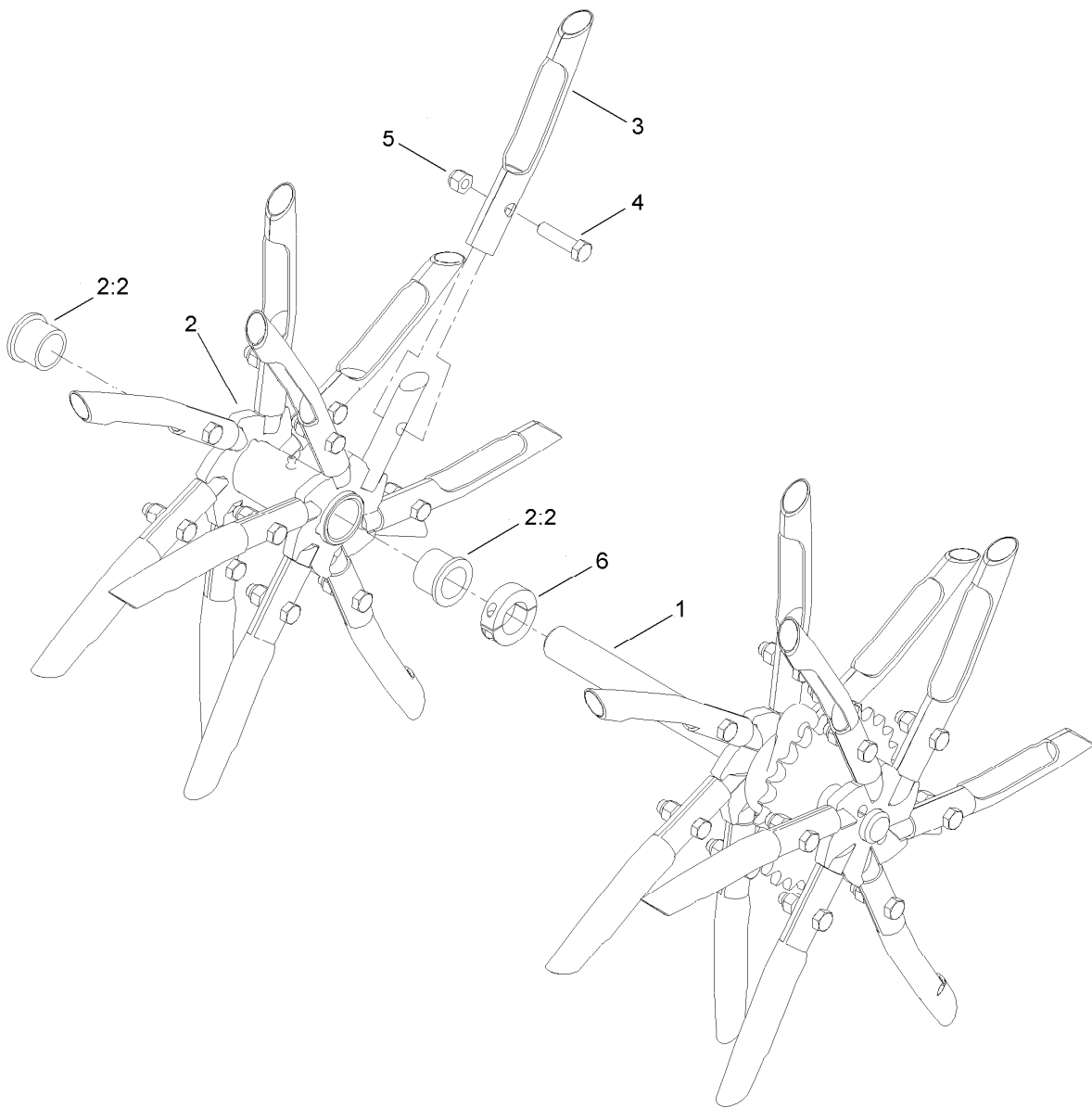
Tine Assembly

<i>Ref.</i>	<i>Part Number</i>	<i>Qty.</i>	<i>Description</i>	<i>Ref.</i>	<i>Part Number</i>	<i>Qty.</i>	<i>Description</i>
1	116-6553-03	1	Trail Arm ASM	11	116-7109	4	Screw-HH
2	116-6738	1	RH Tine Wheel ASM	12	3296-48	6	Nut-Lock, NI
3	116-6739	1	LH Tine Wheel ASM	13	324-8	2	Screw-HH
4	116-6895	2	Chain-Roller, #50	14	116-6629	1	Shaft
5	116-6897	2	Link-Connecting, #50	15	116-6756	2	Bearing-Pillow Block
6	87-7270	2	Washer-Thrust	16	3256-25	4	Washer-Flat
7	116-6719	2	Sprocket-Idler, 17T	17	324-6	2	Screw-HH
8	116-6777	2	Bearing-Flange, 2 Bolt	18	324-7	2	Screw-HH
9	3233-14	2	Screw-CARR	19	116-7327-01	1	Plate-Downstop
10	3296-45	2	Nut-Lock, NI				



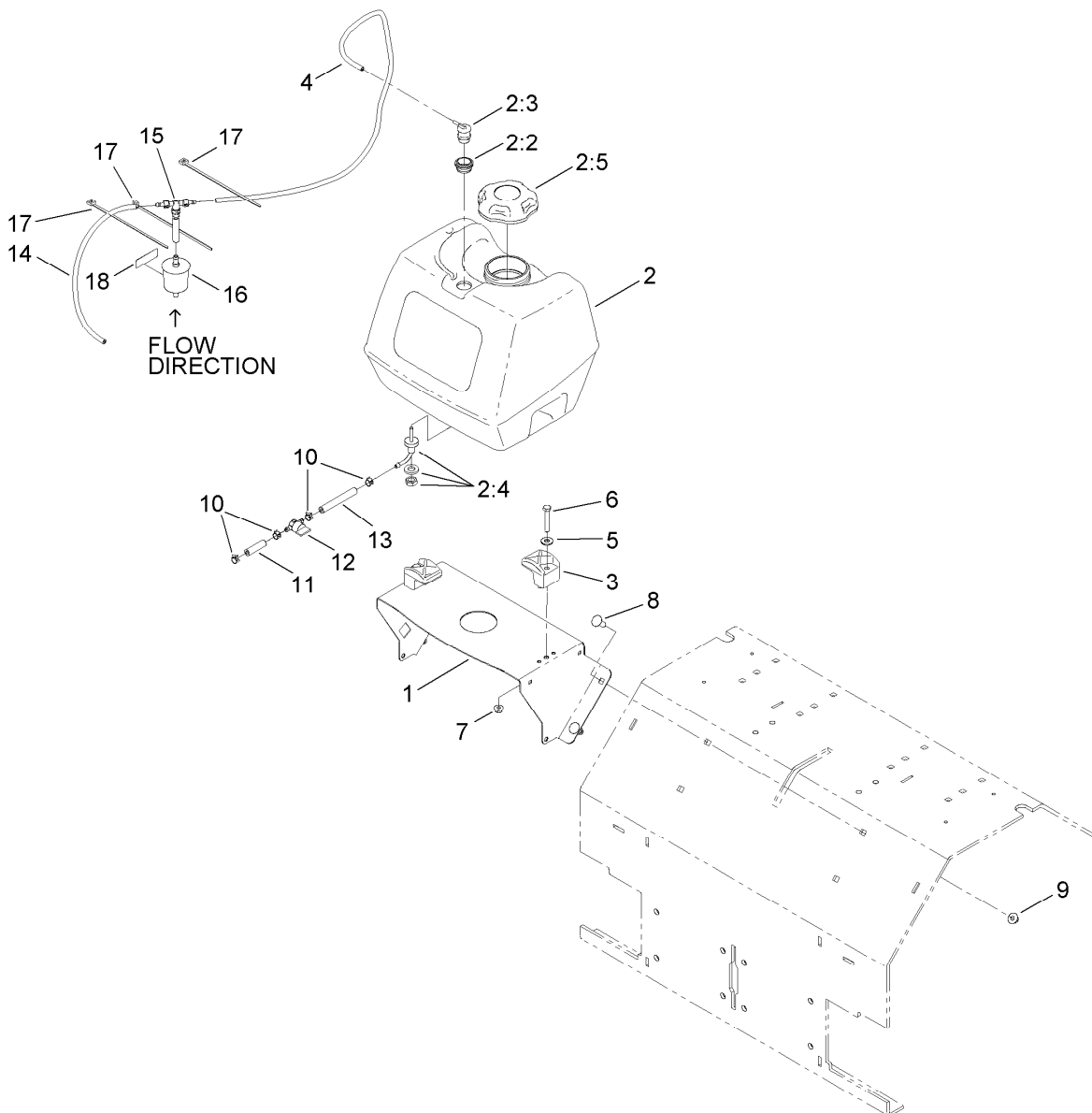
RH Tine Wheel Assembly No. 116-6738

<i>Ref.</i>	<i>Part Number</i>	<i>Qty.</i>	<i>Description</i>
1	116-6727	1	Shaft-Tine, RH
2	116-6731	1	Float Tine Shaft ASM
2:2	94-8949	2	Bushing-Flange
3	121-4894	24	Tine-Coring
4	323-8	24	Screw-HH
5	3296-39	24	Nut-Lock, NI
6	116-7271	1	Collar-Locking



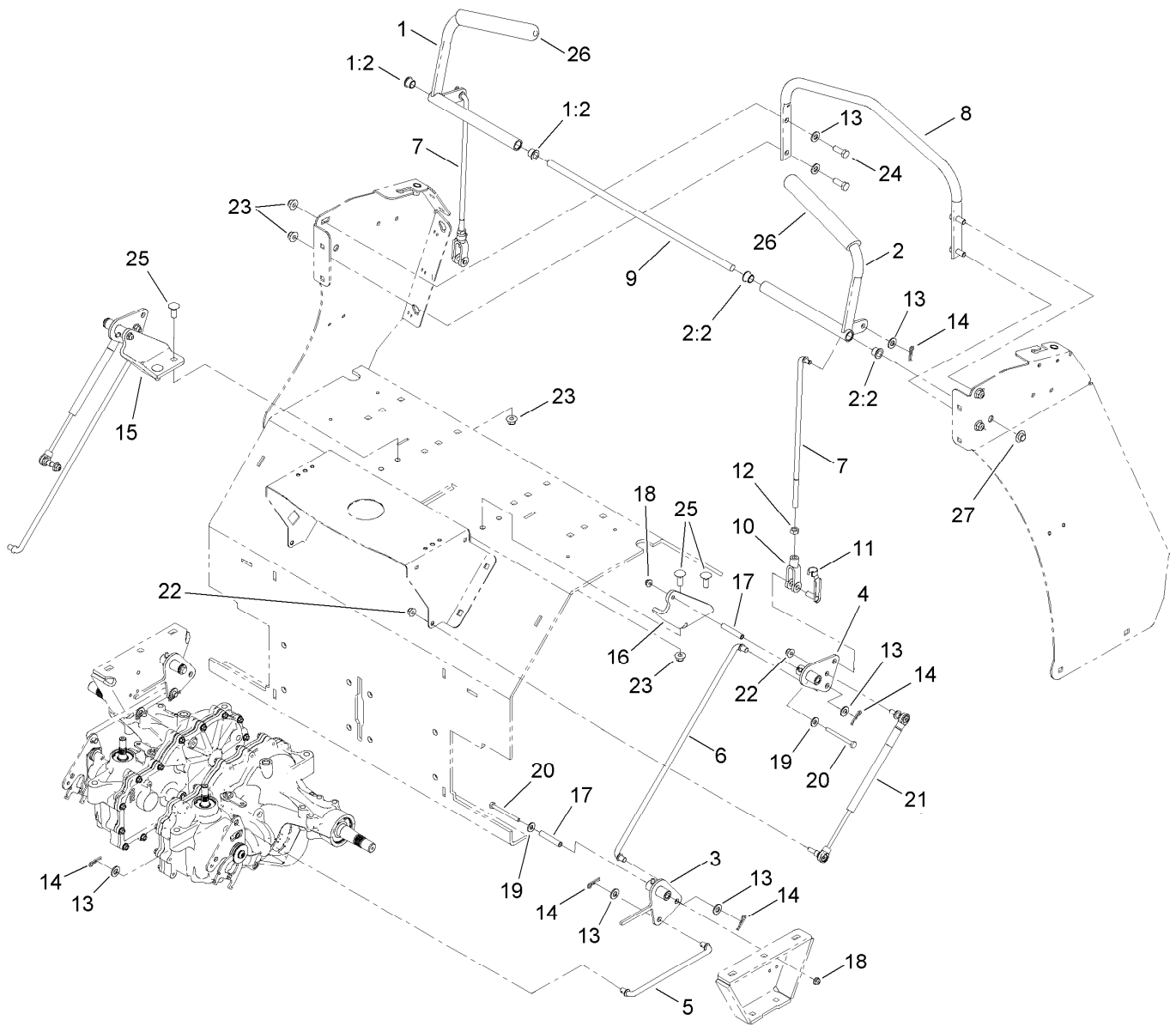
LH Tine Wheel Assembly No. 116-6739

<i>Ref.</i>	<i>Part Number</i>	<i>Qty.</i>	<i>Description</i>
1	116-6728	1	Shaft-Tine, LH
2	116-6731	1	Float Tine Shaft ASM
2:2	94-8949	2	Bushing-Flange
3	121-4894	24	Tine-Coring
4	323-8	24	Screw-HH
5	3296-39	24	Nut-Lock, NI
6	116-7271	1	Collar-Locking



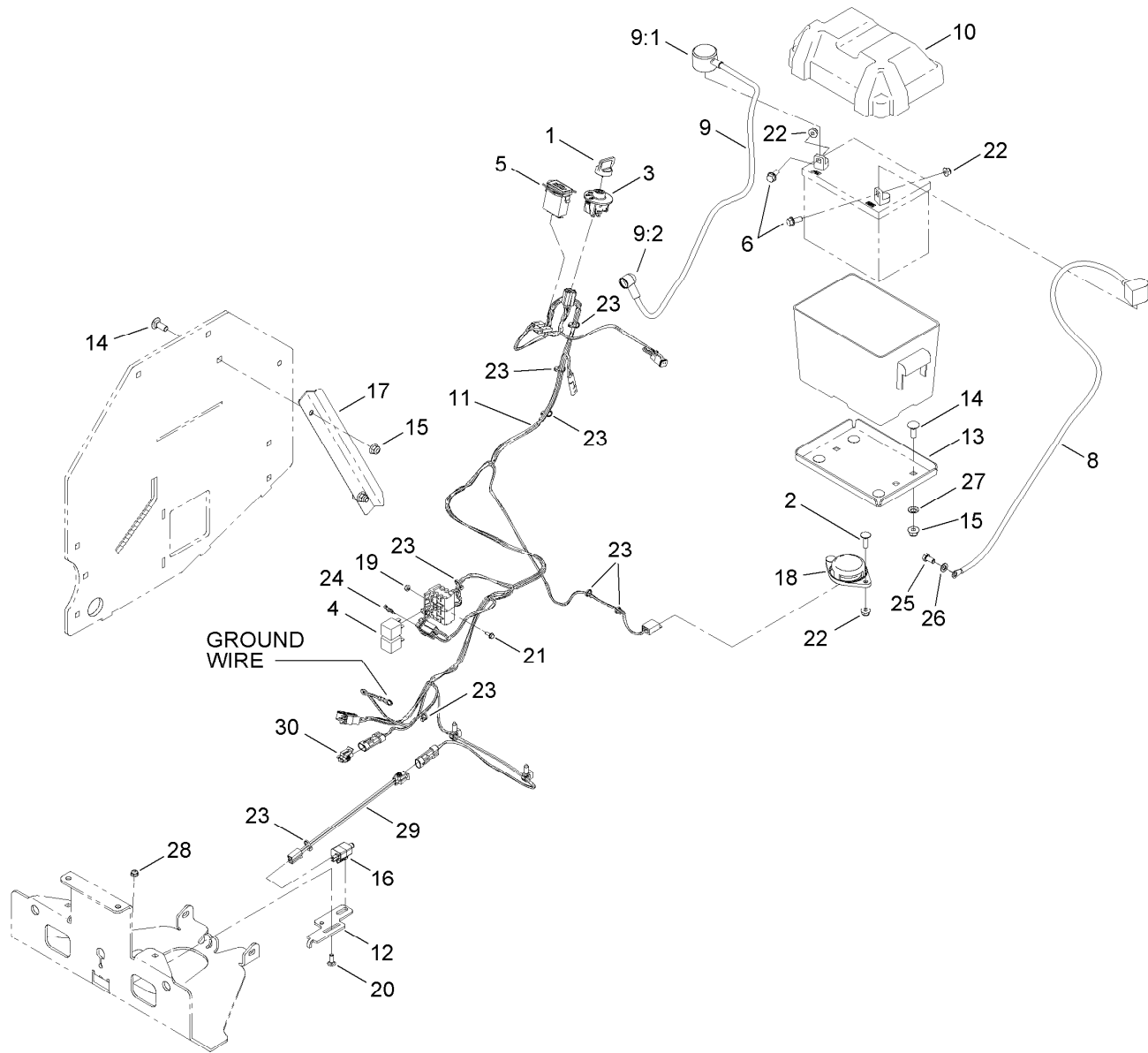
Fuel Assembly

<i>Ref.</i>	<i>Part Number</i>	<i>Qty.</i>	<i>Description</i>	<i>Ref.</i>	<i>Part Number</i>	<i>Qty.</i>	<i>Description</i>
1	116-7243-01	1	Support-Tank, Fuel	8	3231-2	4	Bolt-CARR
2	119-7899	1	Fuel Tank ASM	9	104-8301	4	Nut-Flange, NI
2:2	114-0284	1	Grommet	10	2412-98	4	Clamp-Hose
2:3	114-0285	1	Valve-Rollover	11	119-7856	1	Hose-Fuel
2:4	103-2605	1	Fitting-Fuel, Bulkhead	12	1-603770	1	Valve-Fuel
2:5	120-5461	1	Cap-Fuel, Ratcheting	13	105-8342	1	Hose-Fuel
3	107-4543	2	Clamp	14	115-7872	1	Hose-Fuel
4	116-4346	1	Hose-Emissions	15	116-5464	1	Tee And Check ASM
5	3256-3	2	Washer-Flat	16	120-2235	1	Filter-Air
6	322-10	2	Screw-HH	17	1-303335	3	Tie-Plastic
7	104-8300	2	Nut-Flange, NI	18	116-4769	1	Decal-Filter, Emissions



Motion Control Assembly

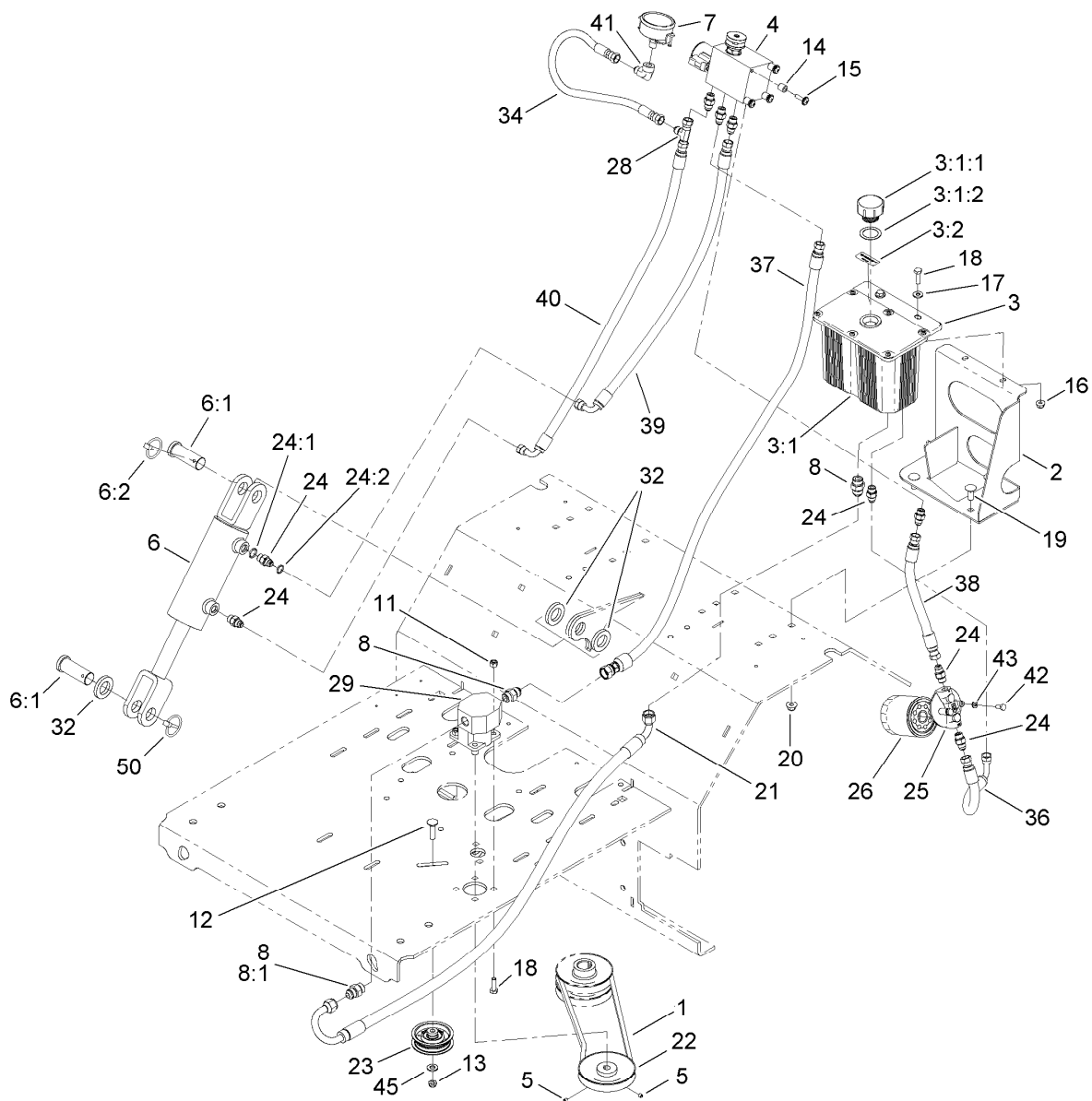
Ref.	Part Number	Qty.	Description	Ref.	Part Number	Qty.	Description
1	116-6567	1	RH Control Handle ASM	14	1-806003	10	Pin-Cotter, Hair
1:2	116-4279	2	Bearing-Flange	15	116-6576-03	1	Bracket-Pivot, RH
2	116-6566	1	LH Control Handle ASM	16	116-6577-03	1	Bracket-Pivot, LH
2:2	116-4279	2	Bearing-Flange	17	116-7224	4	Spacer
3	116-6573-03	2	Bellcrank (W/Arm)	18	104-7201	4	Nut-HF
4	116-6617-03	2	Bellcrank (W/Arm)	19	3256-2	4	Washer-Flat
5	116-6722	2	Link-Hydro Control	20	321-14	4	Screw-HH
6	116-6726	2	Link-Bellcrank Control	21	116-0027	2	Damper-Control, Motion
7	116-6730	2	Link-Bellcrank Control	22	104-8300	4	Nut-Flange, NI
8	116-6608-03	1	Bar-Reference	23	104-8301	8	Nut-Flange, NI
9	116-6607	1	Shaft-Pivot, Control	24	323-6	4	Screw-HH
10	1-633131	2	Yoke-Linkage, Brake	25	3231-2	4	Bolt-CARR
11	103-2399	2	Pin-Spring, Clevis	26	103-8153	2	Grip-Lever, Control
12	3219-3	2	Nut-Hex	27	32112-14	2	Nut-Push
13	3256-24	14	Washer-Flat				



Electrical Assembly

Ref.	Part Number	Qty.	Description	Ref.	Part Number	Qty.	Description
1	1-603511	1	Keys-Ignition (Spare Pair)	15	104-8301	6	Nut-Flange, NI
1	63-8360	1	Key-Ignition (W/Shield)	16	110-6765	1	Switch-Single Pole No
2	3230-2	2	Bolt-CARR	17	116-6768-03	1	Guard-Harness
3	117-2221	1	Switch-Ignition	18	92-6282	1	Switch-Seat
4	1-643275	2	Relay	19	3296-2	2	Nut-Lock, NI
5	1-513374	1	Meter-Hour	20	3229-1	2	Bolt-CARR
6	3234-5	2	Screw-HHF	21	3290-321	2	Screw-HWH
8	117-6422	1	Cable-Battery, Black	22	104-8300	4	Nut-Flange, NI
9	109-7630	1	Positive Battery Cable ASM	23	1-303287	9	Tie-Cable
9:1	109-2407	1	Insulator-Battery	24	1-816001	2	Fuse-Blade Type, 20 Amp
9:2	1-543393	1	Insulator-Solenoid	25	33114-016	1	Screw-HH
10	116-6673	1	Battery Box ASM	26	33094-00	1	Washer-Plain
11	116-6890	1	Harness ASM ●	27	109-9190	4	Nut-Push
12	116-7589	1	Mount-Switch	28	104-7201	1	Nut-HF
13	116-6609-03	1	Tray-Battery	29	116-7502	1	Jumper-Switch
14	3231-2	6	Bolt-CARR	30	116-7505	1	Plug-Switch, Neutral

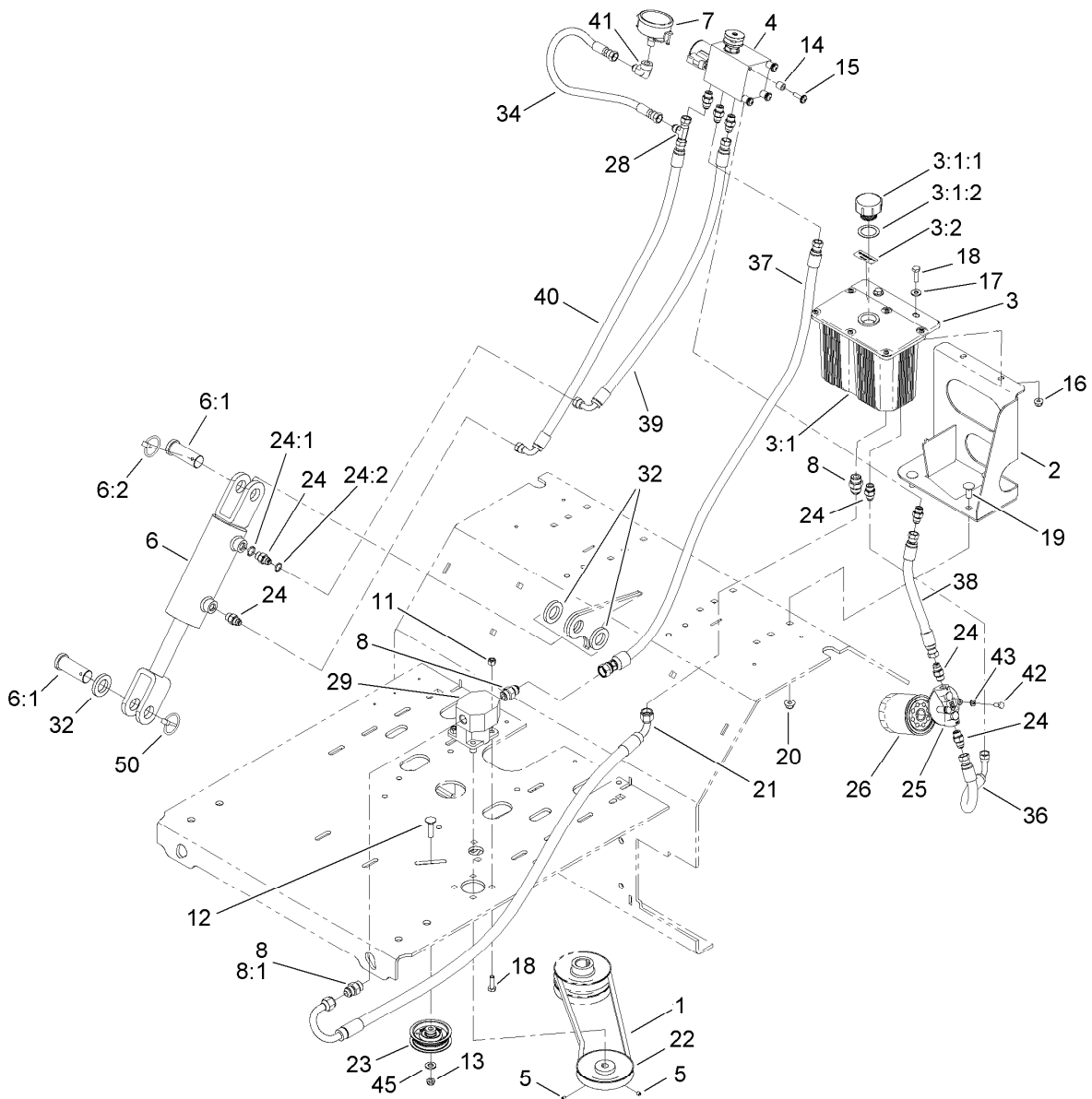
● Use dielectric grease on all unsealed connectors and terminals only. Do not apply in sealed connectors.



Auxiliary Hydraulic Assembly

Ref.	Part Number	Qty.	Description	Ref.	Part Number	Qty.	Description
1	116-6894	1	Belt-A	14	22-7810	4	Spacer
2	116-6618-03	1	Bracket-Tank, Hydraulic	15	110-9361	4	Screw-PPH, Sems
3		1	Reservoir ASM ●	16	104-8300	2	Nut-Flange, NI
3:1		1	Tank-Hydraulic ●	17	3256-2	2	Washer-Flat
3:1:1	103-1948	1	Cap-Reservoir, HYD	18	322-5	6	Screw-HH
3:1:2	103-1949	1	Gasket-Cap	19	3231-2	4	Bolt-CARR
3:2	93-6686	1	Decal-Oil, HYD	20	104-8301	4	Nut-Flange, NI
4	116-6752	1	Valve	21	116-6993	1	HYD Hose ASM
5	3245-1	2	Screw-Set, HSH	22	116-6667	1	Pulley
6	116-6969	1	HYD Cylinder ASM	23	116-6760	1	Pulley-Idler Flat
6:1	116-7290	2	Pin-Clevis	24	103-2156	5	Fitting-Straight
6:2	92-1298	2	Pin-Lynch	24:1	1-603921	1	O-Ring
7	116-6753	1	Gauge-Pressure	24:2	103-1020	1	O-Ring
8	353-388	3	Fitting-Straight	25	104-7836	1	Head-Filter
8:1	237-79	1	O-Ring	26	1-633750	1	Filter-Oil, HYD
11	3296-29	4	Nut-Lock, NI	28	353-877	1	Fitting-HYD, Tee (Swivel)
12	3231-4	1	Screw-CARR	29	116-6751	1	Pump-Gear
13	3296-59	1	Nut-Lock, NI	32	116-6781	5	Spacer

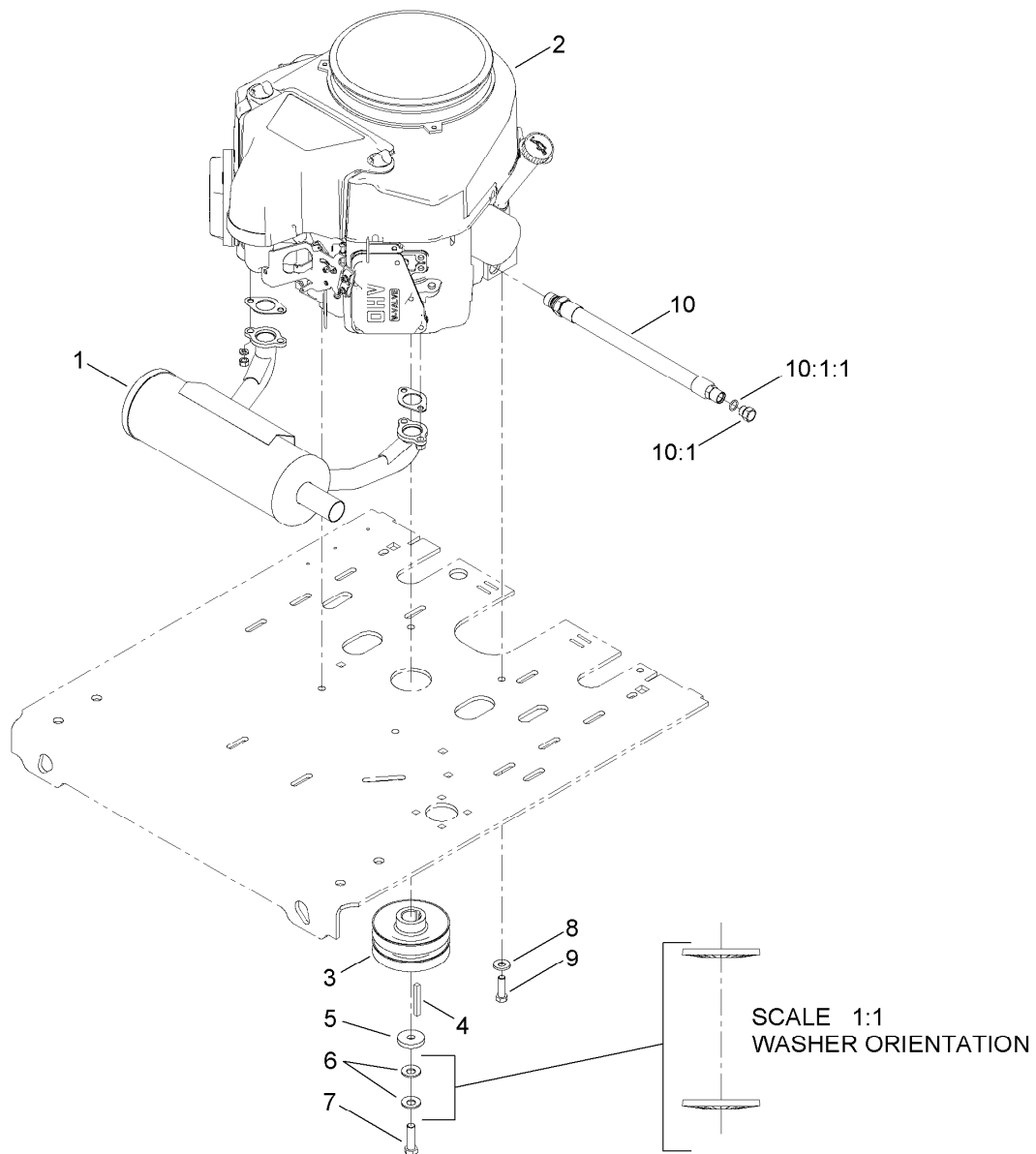
● Not serviced separately



Auxiliary Hydraulic Assembly (continued)

Ref.	Part Number	Qty.	Description	Ref.	Part Number	Qty.	Description
34	116-6679	1	Hose ASM-HYD Hp	41	116-6686	1	Fitting-Elbow, 90
36	116-6675	1	Hose ASM-HYD Lp	42	321-3	2	Screw-HH
37	116-6676	1	Hose ASM-HYD Hp	43	1-805004	2	Washer-Lock
38	116-6680	1	Hose ASM-HYD	45	3256-24	1	Washer-Flat
39	116-6677	1	Hose ASM-HYD	50	92-1298	1	Pin-Lynch
40	116-6678	1	Hose ASM-HYD Hp				

● Not serviced separately



Engine Assembly

Ref.	Part Number	Qty.	Description
1	116-3735	1	Muffler-Horizontal
2		1	Engine-Kawasaki, Fs481V_s25-R ●■
3	116-6666	1	Pulley
4	103-4177	1	Key
5	1-543610	1	Washer-Clutch
6	1-603610	2	Washer-Spring
7	109-9761	1	Screw-HH, W/Loctite ◆
8	98-5975	4	Washer-Belleville
9	323-7	4	Screw-HH
10	116-4924	1	Engine Oil Drain Hose ASM ▲
10:1	353-508	1	Plug-HH
10:1:1	237-42	1	O-Ring

● Not serviced separately

▲ Use a Teflon Pipe Sealant or equivalent on threads.

◆ Use Pro-Lock, Nut Type (P/N 1-840022, .5ml tube) on threads.

■ Obtain parts from www.kawpowerepc.com

Notes:

Notes:



Count on it.