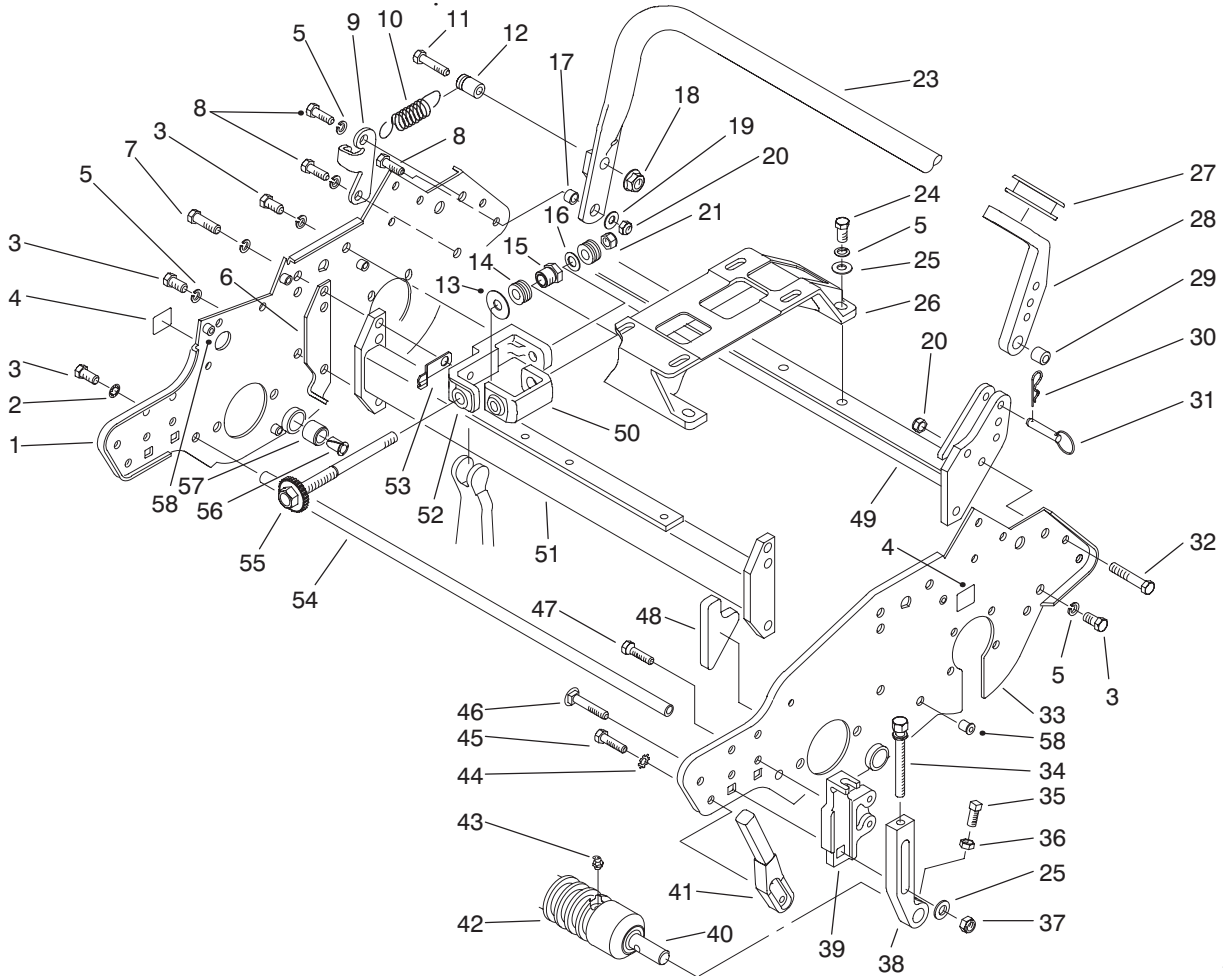




MODEL NO. 04060-60001 & UP
 MODEL NO. 04060TE-60001 & UP

**PARTS
 CATALOG**

GREENSMASTER® 1600
 Traction Unit & Cutting Unit



T-2398-2

FRAME ASSEMBLY

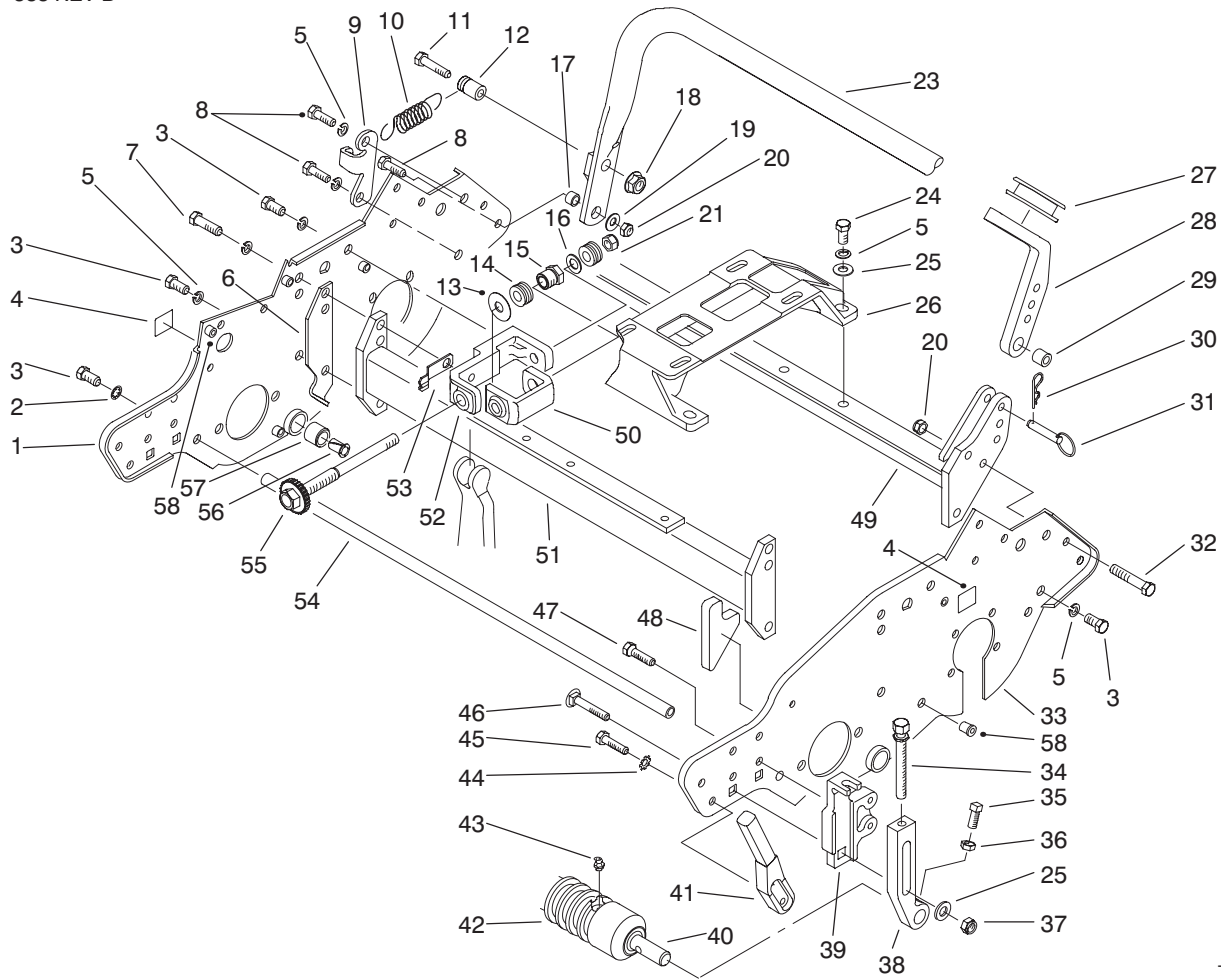
| Ref. No. | Part No. | Description | No. Used |
|----------|----------|--|----------|
| 1 | 94-9004 | Plate - Side, RH (Incl. Ref. #4 & 58) | 1 |
| 2 | 3254-6 | Washer - Lock, Int. Tooth | 2 |
| 3 | 323-4 | Screw - HH | 10 |
| 4 | 88-8950 | Decal - Warning, Belt | 3 |
| 4 | 93-9356 | Decal - Warning, Belt (Europe) | 3 |
| 4 | 93-9389 | Decal - Warning, Belt (Japan) | 3 |
| 5 | 3253-21 | Washer - Lock | 16 |
| 6 | 88-7100 | Spacer - RH | 1 |
| * | 88-7090 | Spacer - LH | 1 |
| 7 | 323-6 | Screw - HH | 2 |
| 8 | 322-5 | Screw - HH | 2 |
| 9 | 65-7890 | Bracket | 1 |
| 10 | 65-7880 | Spring - Extension | 1 |
| 11 | 322-10 | Screw - HH | 1 |

| Ref. No. | Part No. | Description | No. Used |
|----------|----------|--------------------------|----------|
| 12 | 65-7900 | Retainer - Spring | 1 |
| 13 | 94-5859 | Washer - Hardened | 2 |
| 14 | 93-9043 | Washer - Belleville | 32 |
| 15 | 94-5855 | Nut - Spring | 2 |
| 16 | 94-5858 | Washer | 2 |
| 17 | 65-7910 | Spacer | 2 |
| 18 | 32128-25 | Nut - Flange | 1 |
| 19 | 3256-2 | Washer - Flat | 3 |
| 20 | 3296-29 | Nut - Lock | 4 |
| 21 | 3296-48 | Nut - Lock | 2 |
| 22 | 93-7252 | Decal - CE Mark (Europe) | 1 |
| 22 | 93-7842 | Decal - Blank (Japan) | 1 |
| 23 | 93-9019 | Kickstand | 1 |
| 24 | 323-5 | Screw - HH | 6 |
| 25 | 3256-24 | Washer - Flat | 6 |
| 26 | 88-7670 | Base - Engine | 1 |
| 27 | 65-7510 | Grommet - Handle | 2 |

*Not Illustrated

© The TORO Company - 1996
 All Rights Reserved

TPS



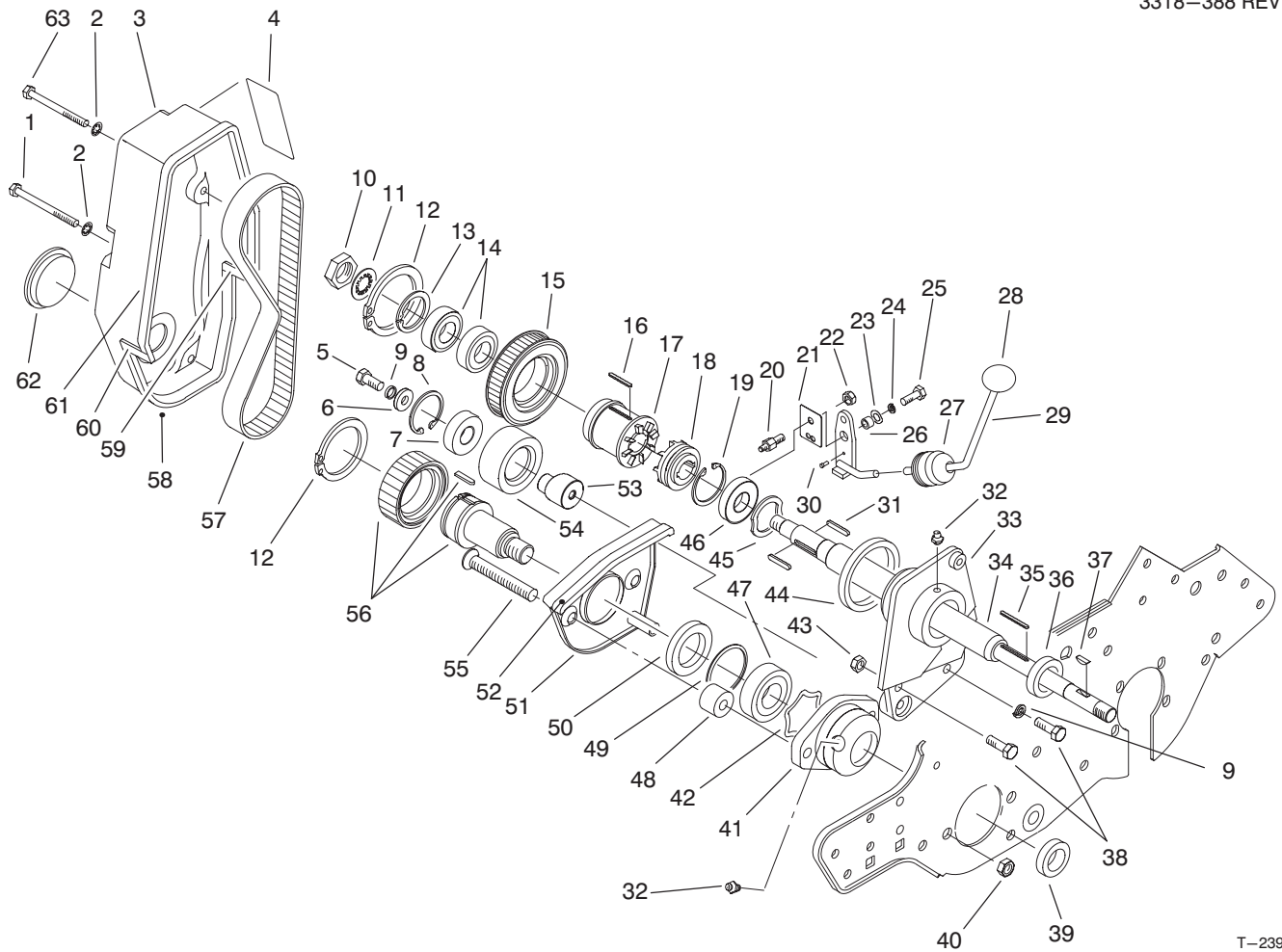
T-2398-2

FRAME ASSEMBLY (Continued)

| Ref. No. | Part No. | Description | No. Used |
|----------|----------|---|----------|
| 28 | 93-6038 | Arm - Handle, LH | 1 |
| * | 93-6037 | Arm - Handle, RH | 1 |
| 29 | 93-6024 | Bushing - Handle, Support | 2 |
| 30 | 3290-467 | Pin - Cotter, Hair | 2 |
| 31 | 93-6029 | Pin - Ring | 2 |
| 32 | 322-9 | Screw - HH | 2 |
| 33 | 94-9005 | Plate - Side, LH (Incl. Ref. #4 & 58)) | 1 |
| 34 | 93-6051 | Screw - Height-of-Cut | 2 |
| 35 | 3242-4 | Screw - Set | 2 |
| 36 | 3218-2 | Nut - Hex. Jam | 2 |
| 37 | 3296-39 | Nut - Lock | 2 |
| 38 | 93-6090 | Arm - Height-of-Cut | 2 |
| 39 | 93-6049 | Bracket - HOC, LH | 1 |
| * | 93-6048 | Bracket - HOC, RH | 1 |
| 40 | 52-3180 | Bearing | 2 |
| 41 | 93-9018 | Rod - Basket, LH | 1 |
| * | 93-9017 | Rod - Basket, RH | 1 |

| Ref. No. | Part No. | Description | No. Used |
|----------|----------|--|----------|
| 42 | 93-9039 | Asm. - Roller, Wiehle (Incl. Ref. #40 & 43) | 1 |
| 43 | 302-5 | Fitting - Grease | 2 |
| 44 | 3255-8 | Washer - Lock | 4 |
| 45 | 322-2 | Screw - HH | 4 |
| 46 | 3231-5 | Screw - Carriage | 2 |
| 47 | 92-8914 | Bolt - Tapered Face | 4 |
| 48 | 93-6064 | Seal - Grass Catcher | 1 |
| 49 | 93-9026 | Frame - Rear | 1 |
| 50 | 94-5853 | Channel - Adjuster | 2 |
| 51 | 93-9032 | Frame - Front | 1 |
| 52 | 94-5854 | Adjuster - Frame, Bedbar | 2 |
| 53 | 94-5856 | Spring - Detent | 2 |
| 54 | 94-5867 | Rod - Support, Frame | 1 |
| 55 | 94-5873 | Asm. - Screw | 2 |
| 56 | 52-2890 | Bushing - Steering Links | 2 |
| 57 | 63-9510 | Asm. - Bushing | 2 |
| 58 | 32148-6 | Insert - Threaded | 9 |

*Not Illustrated

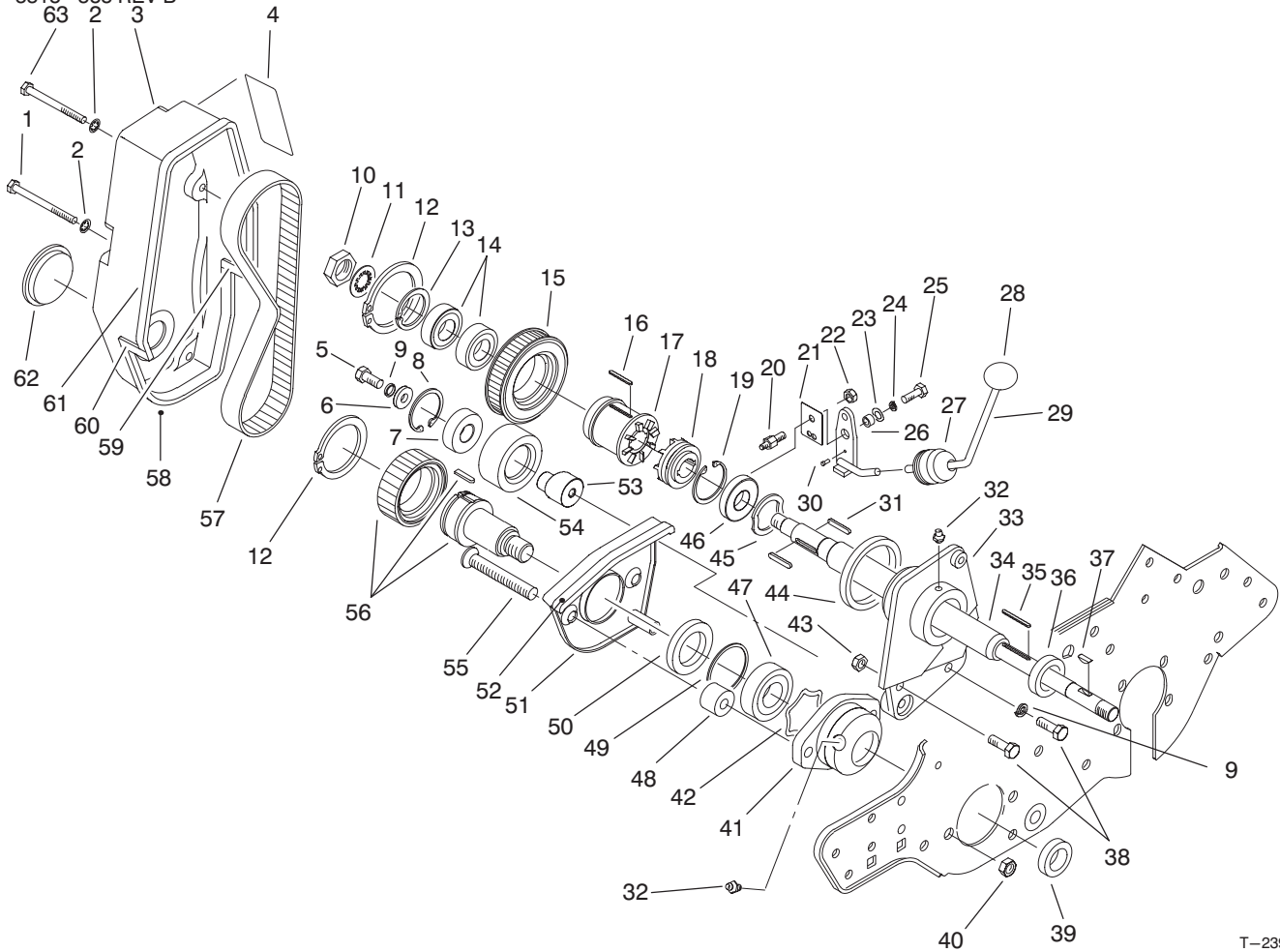


T-2399-1

REEL DRIVE ASSEMBLY

| Ref. No. | Part No. | Description | No. Used | Ref. No. | Part No. | Description | No. Used |
|----------|----------|--|----------|----------|----------|---------------------|----------|
| 1 | 321-20 | Screw - HH | 3 | 22 | 3296-42 | Nut - Lock | 1 |
| 2 | 3254-8 | Washer - Lock, Int. Tooth | 4 | 23 | 3290-414 | Washer - Belleville | 1 |
| 3 | 88-7700 | Cover - Reel Drive | 1 | 24 | 3253-3 | Washer - Lock | 1 |
| 4 | 65-7660 | Decal - Reel Engagement | 1 | 25 | 321-4 | Screw - HH | 1 |
| 4 | 93-7346 | Decal - Reel Engagement (Europe) | 1 | 26 | 88-7860 | Spacer | 1 |
| 4 | 92-4817 | Decal - Reel Engagement (Japan) | 1 | 27 | 65-8960 | Boot - Clutch | 1 |
| 5 | 322-3 | Screw - HH | 1 | 28 | 233-69 | Knob | 1 |
| 6 | 88-7200 | Washer - Flat | 1 | 29 | 88-7170 | Lever - Clutch | 1 |
| 7 | 38-7820 | Bearing - Ball | 1 | 30 | 95-5731 | Screw - Drive | 1 |
| 8 | 32120-42 | Ring - Retaining | 1 | 31 | 88-7150 | Key - Square | 2 |
| 9 | 3253-4 | Washer - Lock | 2 | 32 | 302-5 | Fitting - Grease | 2 |
| 10 | 3220-5 | Nut - Hex. Jam | 1 | 33 | 92-8013 | Housing - Clutch | 1 |
| 11 | 3254-4 | Washer - Lock, Int. Tooth | 1 | 34 | 94-5872 | Shaft - Power | 1 |
| 12 | 32151-95 | Ring - Retaining | 2 | 35 | 65-6850 | Key | 1 |
| 13 | 32151-89 | Ring - Retaining | 1 | 36 | 253-118 | Seal | 1 |
| 14 | 251-336 | Bearing - Ball | 2 | 37 | 3257-32 | Key - Woodruff | 1 |
| 15 | 88-7830 | Asm. - Clutch & Pulley (Incl. Ref. #12-14 & 16-17) | 1 | 38 | 322-5 | Screw - HH | 3 |
| 16 | 65-6980 | Key | 1 | 39 | 253-96 | Seal | 1 |
| 17 | 65-6950 | Clutch - Jaw Driven | 1 | 40 | 3296-39 | Nut - Lock | 2 |
| 18 | 65-6940 | Clutch - Jaw Driver | 1 | 41 | 65-8640 | Housing - Bearing | 1 |
| 19 | 32120-11 | Ring - Retaining | 1 | 42 | 3290-485 | Washer - Wave | 1 |
| 20 | 93-9014 | Pin - Actuator, Clutch | 1 | 43 | 3296-29 | Nut - Lock | 2 |
| 21 | 65-6290 | Spring - Detent, Clutch | 1 | 44 | 65-6970 | Seal - Felt | 1 |
| | | | | 45 | 88-7720 | Washer - Wave | 1 |
| | | | | 46 | 251-204 | Bearing - Ball | 1 |
| | | | | 47 | 251-342 | Bearing | 1 |

3318-388 REV B

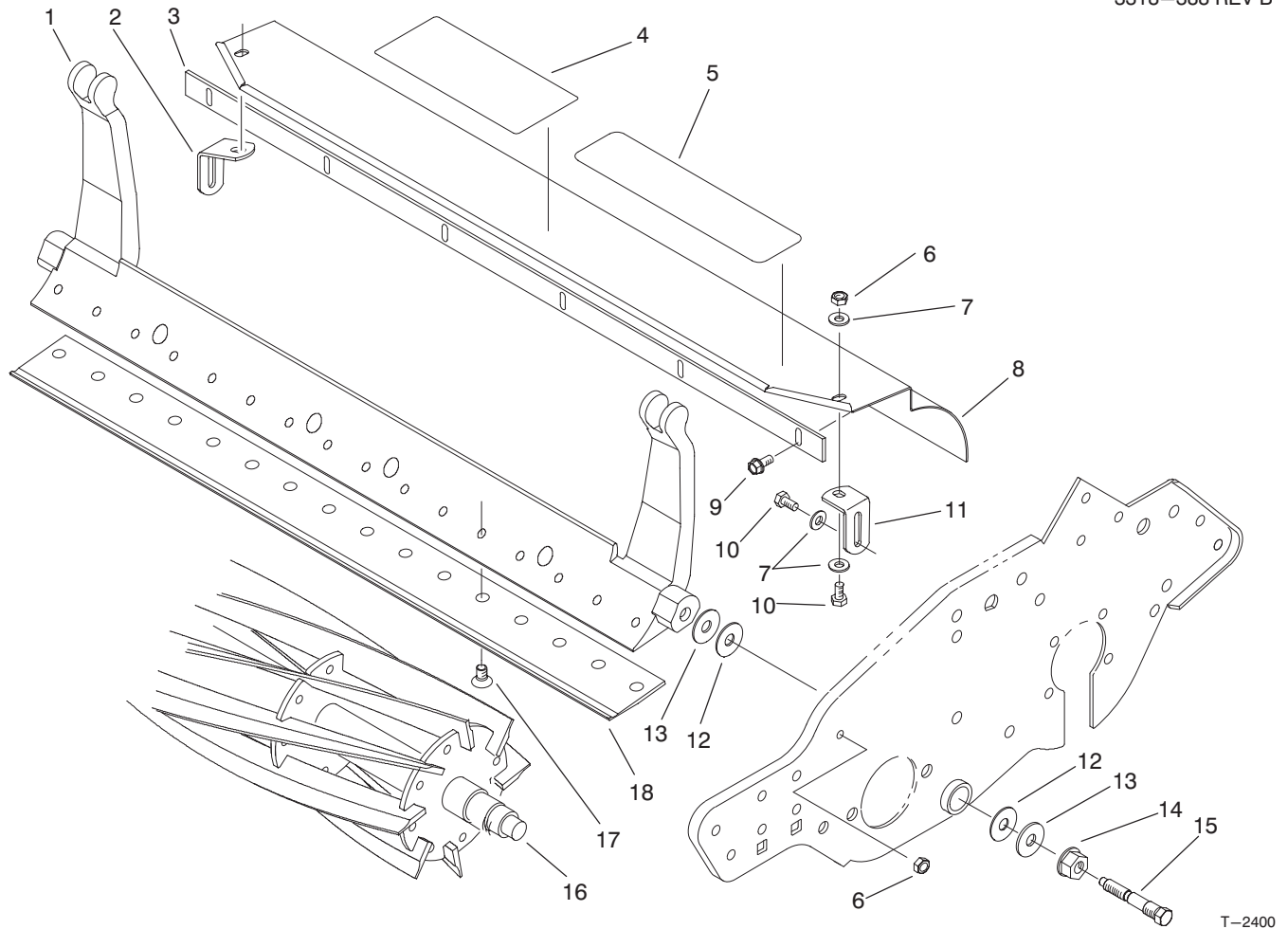


T-2399-1

REEL DRIVE ASSEMBLY (Continued)

| Ref. No. | Part No. | Description | No. Used |
|----------|----------|--|----------|
| 48 | 65-8290 | Standoff - Cover | 2 |
| 49 | 32151-92 | Ring - Retaining | 1 |
| 50 | 253-163 | Seal | 1 |
| 51 | 65-7190 | Cover - Arm, Groomer | 1 |
| 52 | 65-7131 | Trim - Cover, Arm | 1 |
| 53 | 88-7190 | Spacer - Support, Pulley | 1 |
| 54 | 88-7850 | Asm. - Pulley, Idler (Incl. Ref. #5-9 & 53) | 1 |
| 55 | 3289-23 | Screw - Flat Head | 2 |

| Ref. No. | Part No. | Description | No. Used |
|----------|----------|-----------------------|----------|
| 56 | 88-7840 | Asm. - Pulley & Drive | 1 |
| 57 | 65-6200 | Belt - Drive, Reel | 1 |
| 58 | 88-7800 | Seal - Strip, Lower | 1 |
| 59 | 88-7780 | Seal - Strip, Rear | 1 |
| 60 | 88-7770 | Seal - Strip, Front | 1 |
| 61 | 88-7790 | Seal - Strip, Upper | 1 |
| 62 | 237-160 | Plug | 1 |
| 63 | 321-23 | Screw - HH | 1 |

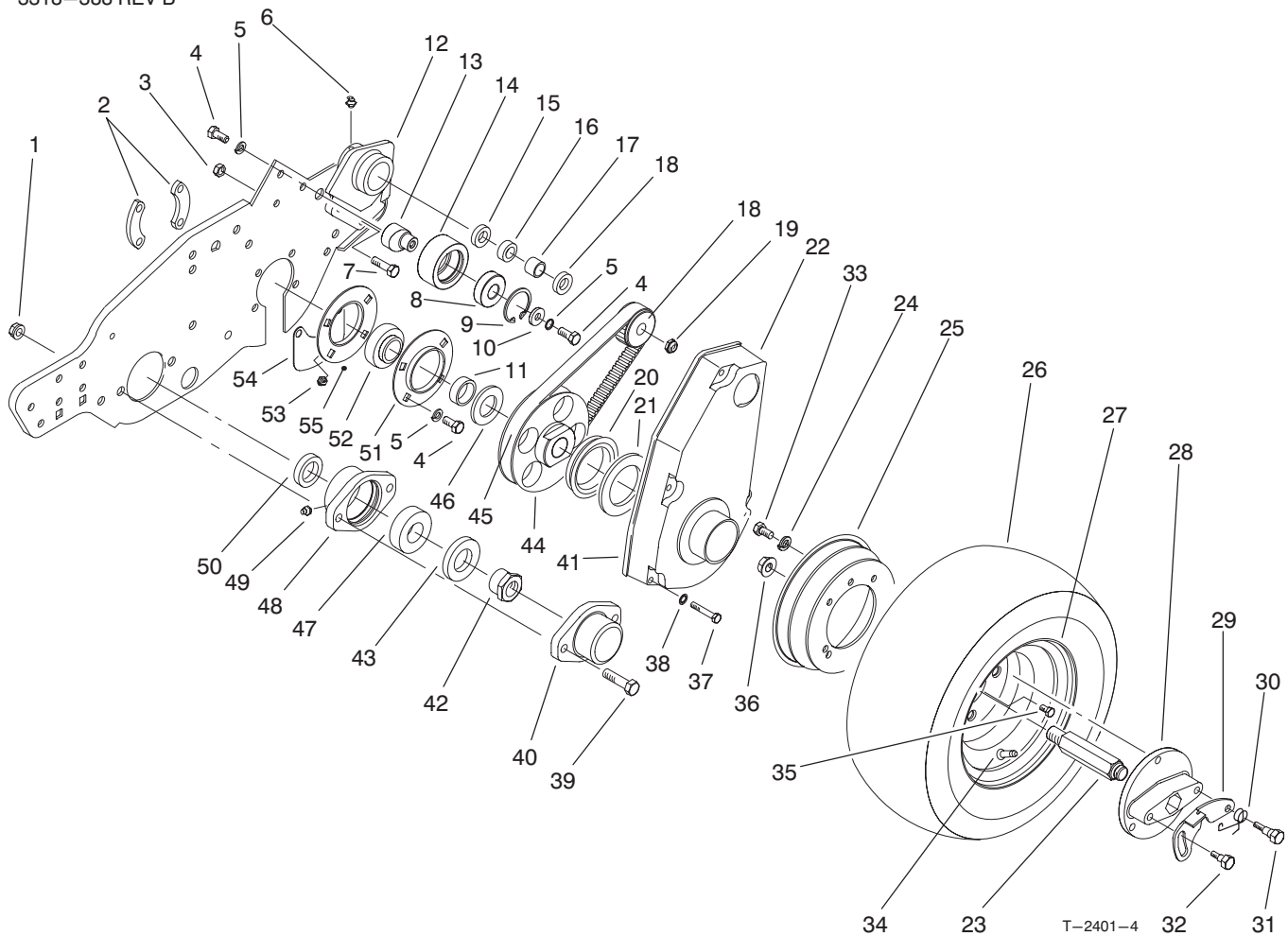


REEL ASSEMBLY

| Ref. No. | Part No. | Description | No. Used |
|----------|----------|------------------------------|----------|
| 1 | 93-9049 | Bedbar | 1 |
| 2 | 65-6460 | Bracket - Shield RH | 1 |
| 3 | 94-5879 | Bar - Cutoff | 1 |
| 4 | 93-6098 | Decal - Service | 1 |
| 4 | 93-7285 | Decal - Service (Danish) | 1 |
| 4 | 93-7286 | Decal - Service (Dutch) | 1 |
| 4 | 93-7287 | Decal - Service (Finnish) | 1 |
| 4 | 93-7288 | Decal - Service (Italian) | 1 |
| 4 | 93-7289 | Decal - Service (Norwegian) | 1 |
| 4 | 93-7290 | Decal - Service (Portuguese) | 1 |
| 4 | 93-7291 | Decal - Service (Swedish) | 1 |
| 4 | 93-9391 | Decal - Service (French) | 1 |
| 4 | 93-9392 | Decal - Service (Spanish) | 1 |
| 4 | 93-9393 | Decal - Service (German) | 1 |
| 4 | 93-9394 | Decal - Service (Japan) | 1 |
| 5 | 62-5070 | Decal - Warning | 1 |

| Ref. No. | Part No. | Description | No. Used |
|----------|----------|---|----------|
| 5 | 93-8064 | Decal - Warning (Europe) | 1 |
| 5 | 84-6560 | Decal - Warning (Japan) | 1 |
| 6 | 3296-42 | Nut - Lock | 4 |
| 7 | 3256-22 | Washer - Flat | 6 |
| 8 | 94-9009 | Asm. - Grass Shield (Incl. Ref. #4 & 5) | 1 |
| 9 | 32144-73 | Screw - HWHTF | 6 |
| 10 | 321-3 | Screw - HH | 4 |
| 11 | 65-6450 | Bracket - Shield LH | 1 |
| 12 | 52-2900 | Washer - Poly | 4 |
| 13 | 52-2860 | Washer | 4 |
| 14 | 32128-48 | Nut - Flange | 2 |
| 15 | 65-6270 | Bolt - Bedbar | 2 |
| 16 | 93-9029 | Reel - 8 Blade | 1 |
| 17 | 57-4910 | Screw - Special | 16 |
| 18 | 93-9015 | Bedknife - 1/8" | 1 |
| * | 94-5885 | Bedknife - Tournament | 1 |

*Not Illustrated

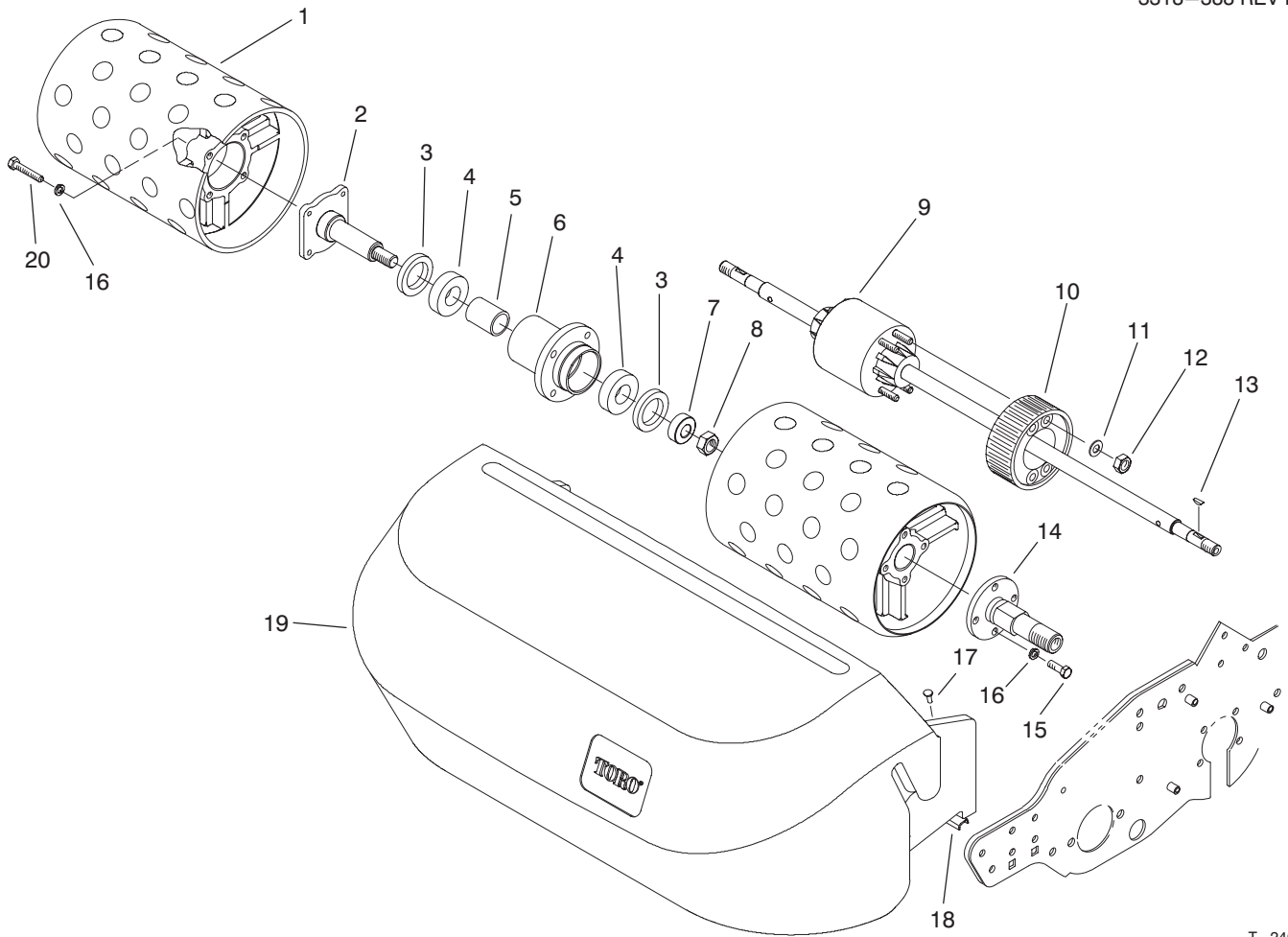


DRUM DRIVE ASSEMBLY

| Ref. No. | Part No. | Description | No. Used |
|----------|----------|--|----------|
| 1 | 3296-39 | Nut - Lock | 2 |
| 2 | 65-8730 | Clamp - Bearing | 4 |
| 3 | 3296-29 | Nut - Lock | 4 |
| 4 | 322-3 | Screw - HH | 8 |
| 5 | 3253-4 | Washer - Lock | 10 |
| 6 | 302-19 | Fitting - Grease | 2 |
| 7 | 322-5 | Screw - HH | 4 |
| 8 | 38-7820 | Bearing - Ball | 2 |
| 9 | 32120-42 | Ring - Retaining | 2 |
| 10 | 88-7200 | Washer - Flat | 2 |
| 11 | 88-7530 | Spacer | 2 |
| 12 | 88-7470 | Housing - LH | 1 |
| * | 88-7490 | Housing - RH | 1 |
| 13 | 88-7190 | Spacer - Pulley Support | 2 |
| 14 | 88-7850 | Asm. - Pulley, Idler (Incl. Ref. #4-5 & 8-10) | 1 |
| 15 | 253-160 | Seal | 4 |
| 16 | 251-338 | Bearing | 2 |
| 17 | 86-7130 | Spacer | 2 |
| 18 | 65-6660 | Pulley | 2 |
| 19 | 3296-57 | Nut - Lock | 2 |
| 20 | 253-161 | Seal - V-Ring | 2 |
| 21 | 94-9018 | Washer | 2 |
| 22 | 88-7680 | Cover - Drum Belt LH | 1 |
| * | 88-7690 | Cover - Drum Belt RH | 1 |
| 23 | 88-7580 | Shaft - Wheel, LH | 1 |
| * | 88-7590 | Shaft - Wheel, RH | 1 |
| 24 | 68-9420 | Washer - Lock | 6 |
| 25 | 65-7970 | Rim - Shallow | 2 |
| 26 | 65-7940 | Tire | 2 |
| 27 | 65-7960 | Rim - Deep | 2 |

| Ref. No. | Part No. | Description | No. Used |
|----------|----------|--|----------|
| 28 | 88-7610 | Hub | 2 |
| 29 | 65-8020 | Lever - Retaining | 2 |
| 30 | 65-8050 | Spring | 2 |
| 31 | 65-8030 | Bolt - Mounting, Long | 2 |
| 32 | 65-8040 | Bolt - Mounting, Short | 2 |
| 33 | 48-7700 | Screw - HH | 6 |
| 34 | 65-7950 | Tube W/Valve Stem | 2 |
| 35 | 48-7610 | Screw - HH | 8 |
| 36 | 65-7980 | Nut - Flange | 8 |
| 37 | 321-11 | Screw - HH | 8 |
| 38 | 3254-8 | Washer - Lock, Int. Tooth | 8 |
| 39 | 323-7 | Screw - HH | 2 |
| 40 | 65-6220 | Cover - Bearing | 1 |
| 41 | 88-7810 | Seal - Strip, Drum Cover | 1 |
| 42 | 92-7302 | Nut - Bearing Lock | 1 |
| 43 | 253-163 | Seal | 1 |
| 44 | 94-9017 | Pulley - LH | 1 |
| * | 94-9016 | Pulley - RH | 1 |
| 45 | 65-5210 | Belt | 1 |
| 46 | 88-7540 | Washer - Backup | 2 |
| 47 | 251-342 | Bearing | 1 |
| 48 | 65-8640 | Housing - Bearing | 1 |
| 49 | 302-5 | Fitting - Grease | 1 |
| 50 | 253-96 | Seal | 1 |
| 51 | 65-6590 | Flangette | 2 |
| 52 | 88-7880 | Bearing | 2 |
| 53 | 302-40 | Fitting - Grease 90° | 2 |
| 54 | 65-8720 | Closure | 2 |
| 55 | 95-0923 | Flangette | 2 |
| * | 88-7570 | Asm. - Wheel, Transport (Incl. Ref. #24-36) | 2 |

*Not Illustrated

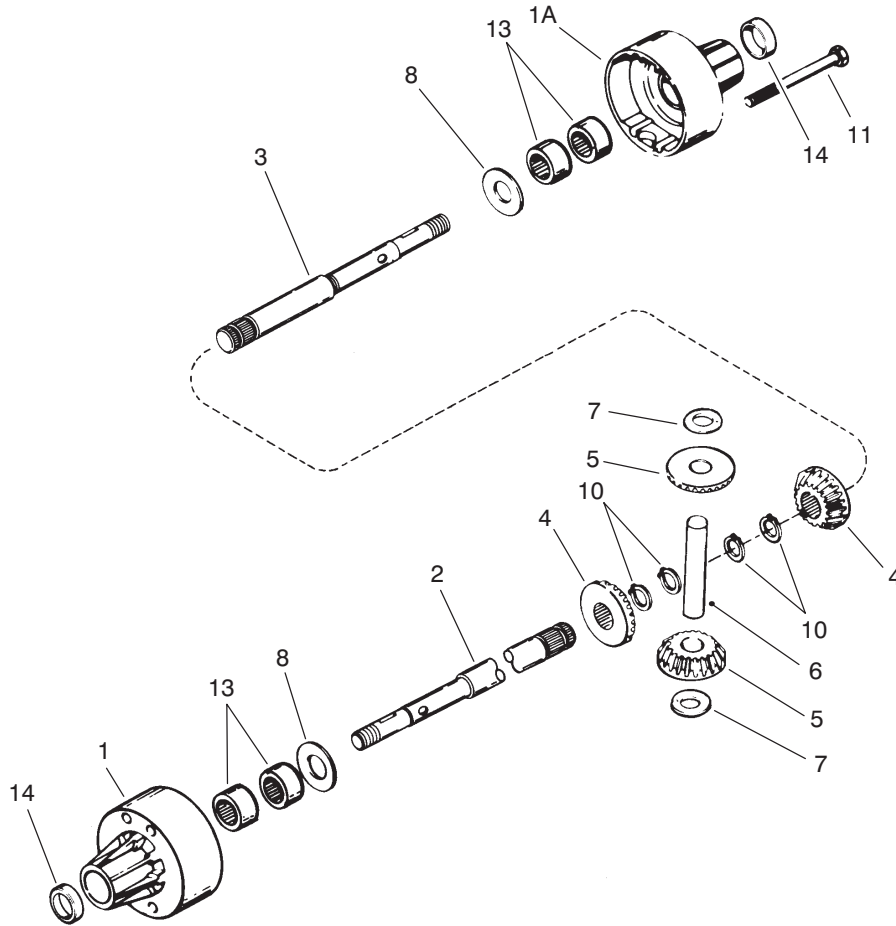


T-2402

DRUM AND BASKET ASSEMBLY

| Ref. No. | Part No. | Description | No. Used |
|----------|----------|------------------------|----------|
| 1 | 93-9042 | Drum - Long | 2 |
| 2 | 94-5850 | Spindle - Drum | 1 |
| 3 | 253-159 | Seal - Spring Lip | 2 |
| 4 | 251-257 | Bearing | 2 |
| 5 | 65-6520 | Spacer - Bearing | 1 |
| 6 | 94-5852 | Hub - Drum | 1 |
| 7 | 65-6530 | Spacer - Seal | 1 |
| 8 | 3296-33 | Nut - Lock | 1 |
| 9 | 93-9041 | Differential | 1 |
| | | Peerless Model 100-116 | 1 |
| 10 | 65-9120 | Pulley - Differential | 1 |
| 11 | 3256-23 | Washer - Flat | 4 |

| Ref. No. | Part No. | Description | No. Used |
|----------|----------|-----------------------|----------|
| 12 | 3296-29 | Nut - Lock | 4 |
| 13 | 3257-32 | Key - Woodruff | 2 |
| 14 | 88-7520 | Shaft - Drum LH | 1 |
| * | 88-7510 | Shaft - Drum RH | 1 |
| 15 | 322-5 | Screw - HH | 8 |
| 16 | 3253-4 | Washer - Lock | 16 |
| 17 | 3290-409 | Rivet | 9 |
| 18 | 94-5894 | Channel - Basket | 1 |
| 19 | 94-5893 | Basket - Grass | 1 |
| | | (Incl. Ref. #17 & 18) | 1 |
| 20 | 322-9 | Screw - HH | 8 |



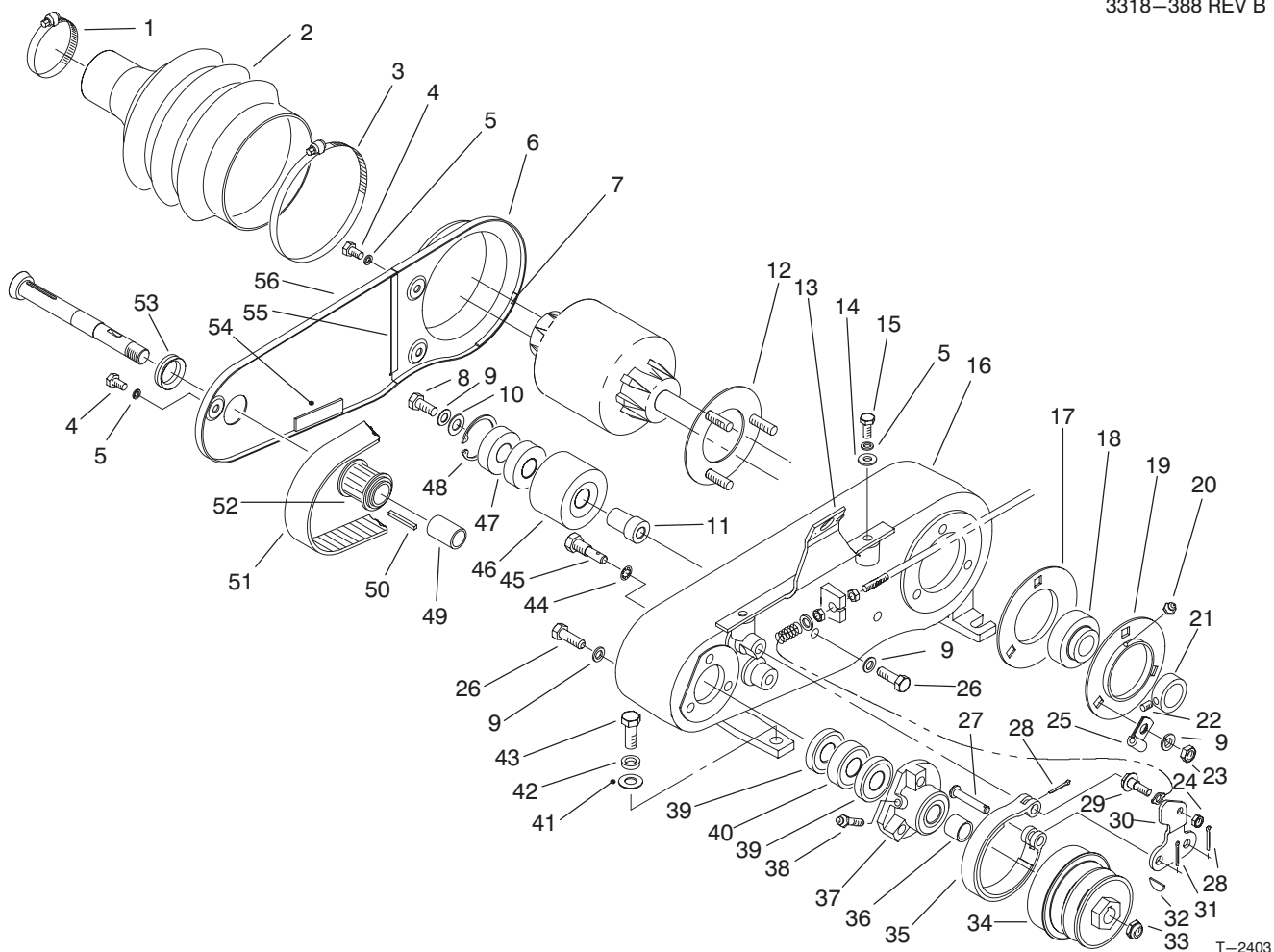
T-1571

DIFFERENTIAL ASSEMBLY PEERLESS MODEL NO. 100-116

| Ref. No. | Part No. | Description | No. Used |
|----------|----------|---|----------|
| 1 | 95-5741 | Housing Differential Carrier (Incl. Ref. #13 & 14) | 1 |
| 1A | 95-5740 | Housing Differential Carrier (Incl. Ref. #13 & 14) | 1 |
| 2 | 95-5743 | Axle (Long) 23.097" | 1 |
| 3 | 95-5742 | Axle (Short) 9.118" | 1 |
| 4 | 95-5749 | Gear Bevel | 2 |
| 5 | 95-5748 | Gear Pinion | 2 |
| 6 | 95-5747 | Pin Drive | 1 |

| Ref. No. | Part No. | Description | No. Used |
|----------|----------|----------------------------------|----------|
| 7 | 95-5744 | Washer Thrust | 2 |
| 8 | 95-5745 | Washer | 2 |
| 10 | 95-5746 | Ring - Retaining (Pkg. of 2) | 4 |
| 11 | 95-5739 | Screw Flanged Hex Hd. | 4 |
| 13 | 95-5738 | Bearing Needle | 4 |
| 14 | 95-5737 | Seal Oil | 2 |
| * | 95-5734 | Betonite Grease 32 oz. Bottle | 1 |

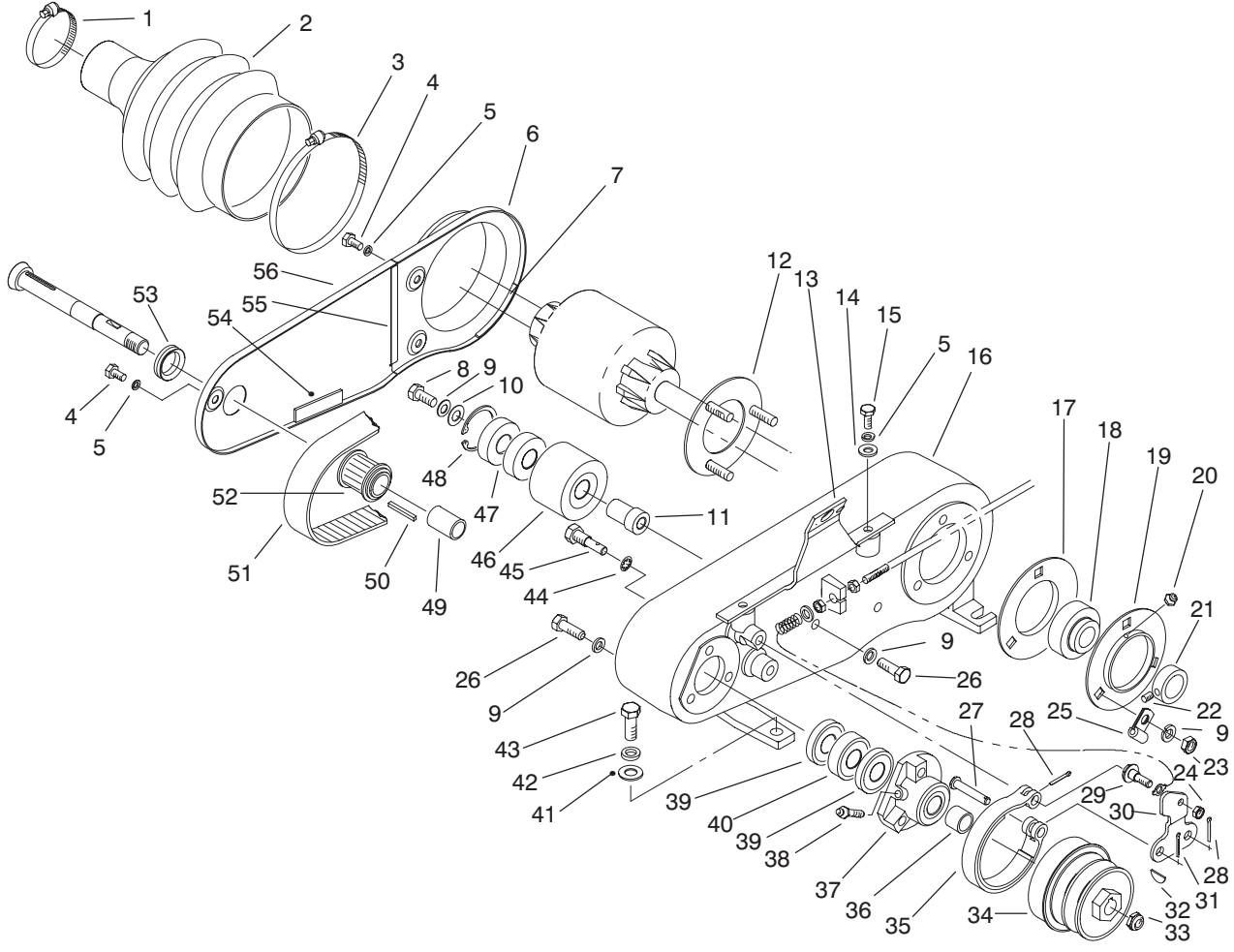
*Not Illustrated



COUNTERSHAFT ASSEMBLY

| Ref. No. | Part No. | Description | No. Used |
|----------|----------|----------------------------------|----------|
| 1 | 2412-139 | Clamp - Hose | 1 |
| 2 | 94-5866 | Boot - Differential | 1 |
| 3 | 2412-140 | Clamp - Hose | 1 |
| 4 | 321-2 | Screw - HH | 3 |
| 5 | 3253-3 | Washer - Lock | 5 |
| 6 | 88-7250 | Cover - Box Rear | 1 |
| 7 | 65-6902 | Strip - Cover Seal | 1 |
| 8 | 322-3 | Screw - HH | 1 |
| 9 | 3253-4 | Washer - Lock | 7 |
| 10 | 88-7200 | Washer - Flat | 1 |
| 11 | 88-7380 | Spacer - Pulley Support | 1 |
| 12 | 65-6720 | Plate - Screw | 1 |
| 13 | 93-1448 | Asm. - Cover, Bracket | 1 |
| 14 | 3256-22 | Washer - Flat | 2 |
| 15 | 321-3 | Screw - HH | 2 |
| 16 | 88-7230 | Housing - Countershaft | 1 |
| 17 | 65-6710 | Flangette | 1 |
| 18 | 251-343 | Bearing (Incl. Ref. #21 & 22) | 1 |
| 19 | 65-6700 | Flangette (Incl. Ref. #20) | 1 |
| 20 | 302-55 | Fitting - Grease | 1 |
| 21 | | Collar - Locking | 1 |
| 22 | | Screw - Set | 2 |
| 23 | 3218-2 | Nut - Hex. Jam | 3 |
| 24 | 3296-42 | Nut - Lock | 1 |

| Ref. No. | Part No. | Description | No. Used |
|----------|----------|--|----------|
| 25 | 88-7970 | Clip | 1 |
| 26 | 322-5 | Screw - HH | 4 |
| 27 | 283-75 | Pin - Clevis | 1 |
| 28 | 3272-6 | Pin - Cotter | 2 |
| 29 | 11-9030 | Bolt - Shoulder | 1 |
| 30 | 65-8610 | Lever - Brake | 1 |
| 31 | 3272-8 | Pin - Cotter | 1 |
| 32 | 3257-32 | Key - Woodruff | 1 |
| 33 | 3296-57 | Nut - Lock | 1 |
| 34 | 92-9212 | Pulley - Input Shaft | 1 |
| 35 | 65-8700 | Band - Brake | 1 |
| 36 | 86-7130 | Spacer - Short | 1 |
| 37 | 65-6760 | Housing - Bearing | 1 |
| 38 | 302-64 | Fitting - Grease | 1 |
| 39 | 253-160 | Seal | 2 |
| 40 | 251-338 | Bearing | 1 |
| 41 | 3256-24 | Washer - Flat | 4 |
| 42 | 3253-21 | Washer - Lock | 4 |
| 43 | 323-5 | Screw - HH | 4 |
| 44 | 3254-6 | Washer - Lock, Int. Tooth | 2 |
| 45 | 65-6810 | Support - Brake | 2 |
| 46 | 88-7870 | Asm. - Pulley, Idler (Incl. Ref. #9-11 & 47-49) | 1 |
| 47 | 38-7820 | Bearing - Ball | 2 |
| 48 | 32120-42 | Ring - Retaining | 1 |
| 49 | 86-7140 | Spacer - Long | 1 |

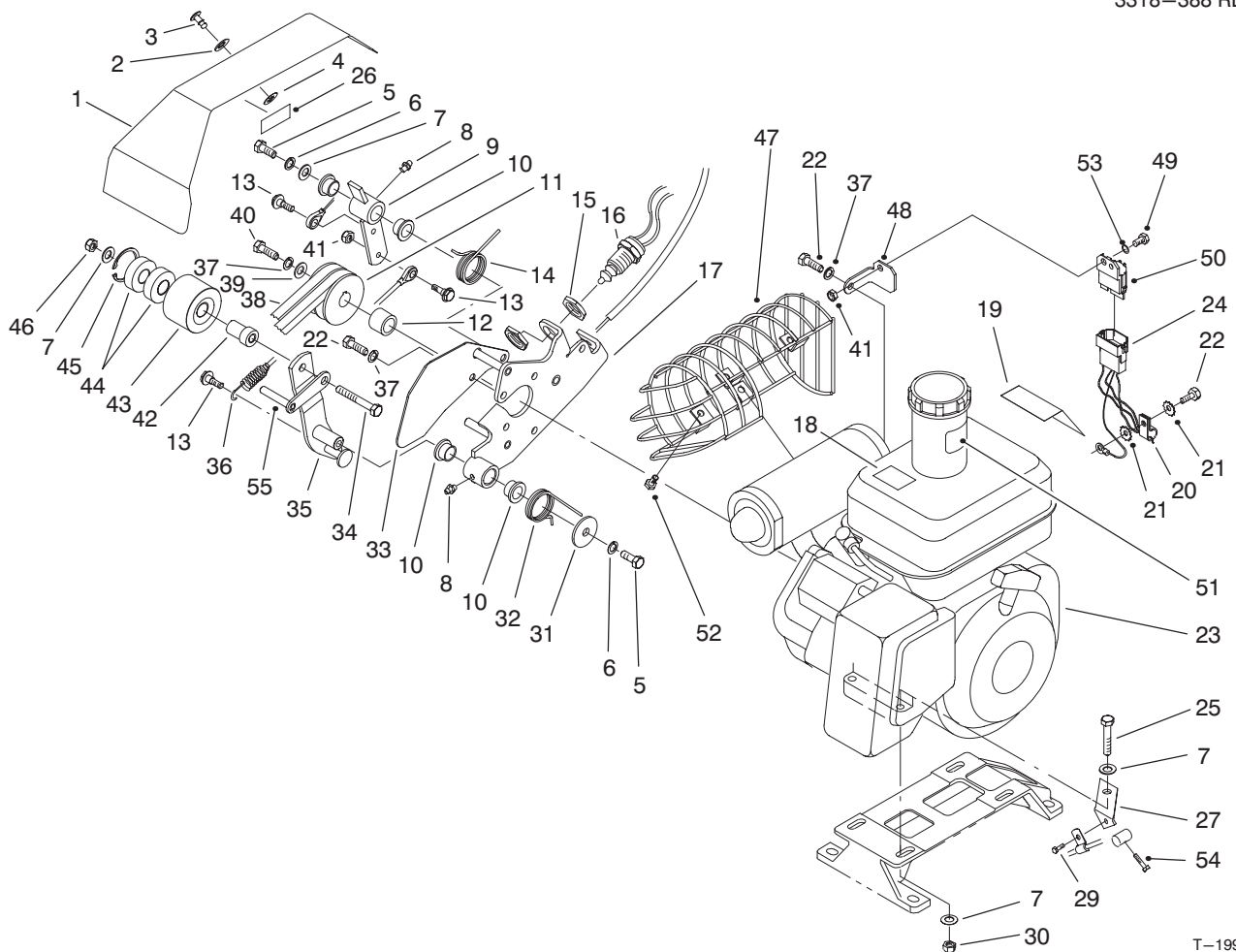


T-2403

COUNTERSHAFT ASSEMBLY (Continued)

| Ref. No. | Part No. | Description | No. Used |
|----------|----------|-----------------------|----------|
| 50 | 65-6850 | Key | 1 |
| 51 | 65-9080 | Belt | 1 |
| 52 | 65-8910 | Pulley - Countershaft | 1 |
| 53 | 88-7710 | Seal - Countershaft | 1 |

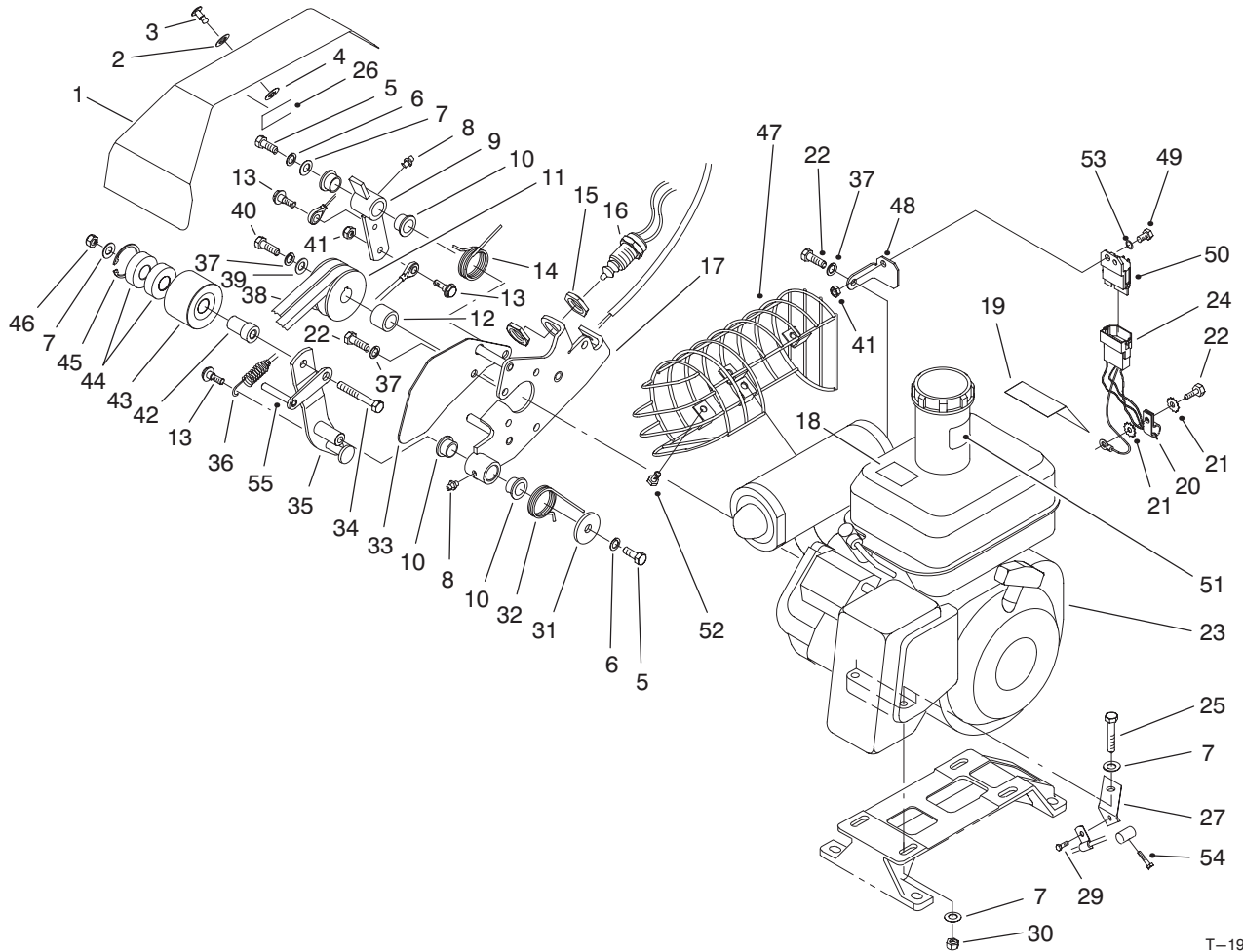
| Ref. No. | Part No. | Description | No. Used |
|----------|----------|--------------------|----------|
| 54 | 65-6901 | Strip - Cover Seal | 1 |
| 55 | 65-6903 | Strip - Cover Seal | 1 |
| 56 | 88-7240 | Cover - Box Front | 1 |



T-1996-6

ENGINE AND BELLCRANK ASSEMBLY

| Ref. No. | Part No. | Description | No. Used | Ref. No. | Part No. | Description | No. Used |
|----------|----------|---------------------------------------|----------|----------|----------|--|----------|
| 1 | 94-9007 | Cover - Bellcrank (Incl. Ref. #26) | 1 | 22 | 48-7700 | Screw - Cap Hex. Hd. | 7 |
| 2 | 3256-2 | Washer - Flat | 1 | 23 | 94-9003 | Engine Assembly Kawasaki Model FE120G-CS00 (Incl. Ref. #18-19 & 51) | 1 |
| 3 | 93-6074 | Stud | 1 | 24 | 94-5862 | Harness - Wire | 1 |
| 4 | 93-6073 | Retainer | 1 | 24 | 94-5865 | Harness - Wire (Europe) | 1 |
| 5 | 323-4 | Screw - Cap Hex. Hd. | 2 | 25 | 322-9 | Screw - Cap Hex. Hd. | 4 |
| 6 | 3253-21 | Washer - Spring Lock | 2 | 26 | 67-5360 | Decal - Danger | 1 |
| 7 | 3256-56 | Washer - Flat | 10 | 26 | 93-7273 | Decal - Danger (Europe) | 1 |
| 8 | 302-5 | Fitting - Grease | 2 | 26 | 84-7280 | Decal - Danger (Japan) | 1 |
| 9 | 93-6014 | Lever | 1 | 27 | 88-7960 | Bracket - Throttle Cable | 1 |
| 10 | 65-8770 | Bushing | 4 | 29 | 32144-73 | Screw - Hex. Washer Hd. Thread Form | 1 |
| 11 | 92-9216 | Pulley - Input Drive | 1 | 30 | 3296-29 | Nut - Lock | 4 |
| 12 | 65-8260 | Spacer - Engine Shaft | 1 | 31 | 93-6099 | Washer | 1 |
| 13 | 11-9030 | Bolt - Shoulder | 3 | 32 | 93-6012 | Spring - Torsion, Clutch | 1 |
| 14 | 93-6011 | Spring - Torsion | 1 | 33 | 93-6013 | Shield - Belt | 1 |
| 15 | 3218-20 | Nut - Jam | 2 | 34 | 323-11 | Screw - Cap Hex. Hd. | 1 |
| 16 | 87-5490 | Switch (Incl. Ref. #15) | 1 | 35 | 93-6003 | Lever - Clutch | 1 |
| 17 | 93-6015 | Bracket - Clutch | 1 | 36 | 93-9024 | Cable Assembly - Link | 1 |
| 18 | 63-8440 | Decal - Hot | 1 | 37 | 3253-4 | Washer - Spring Lock | 7 |
| 18 | 93-8069 | Decal - Hot (Europe) | 1 | 38 | 92-9218 | V-Belt, Matched Set | 1 |
| 18 | 83-2560 | Decal - Hot (Japan) | 1 | 39 | 65-8270 | Washer | 1 |
| 19 | 88-7620 | Decal - Danger | 1 | 40 | 48-9460 | Screw - Cap Hex. Hd. | 1 |
| 19 | 93-7348 | Decal - Danger (Europe) | 1 | 41 | 3296-42 | Nut - Lock | 4 |
| 19 | 92-4813 | Decal - Danger (Japan) | 1 | | | | |
| 20 | 2412-93 | Clamp - R | 1 | | | | |
| 21 | 3255-9 | Washer - External Lock | 2 | | | | |

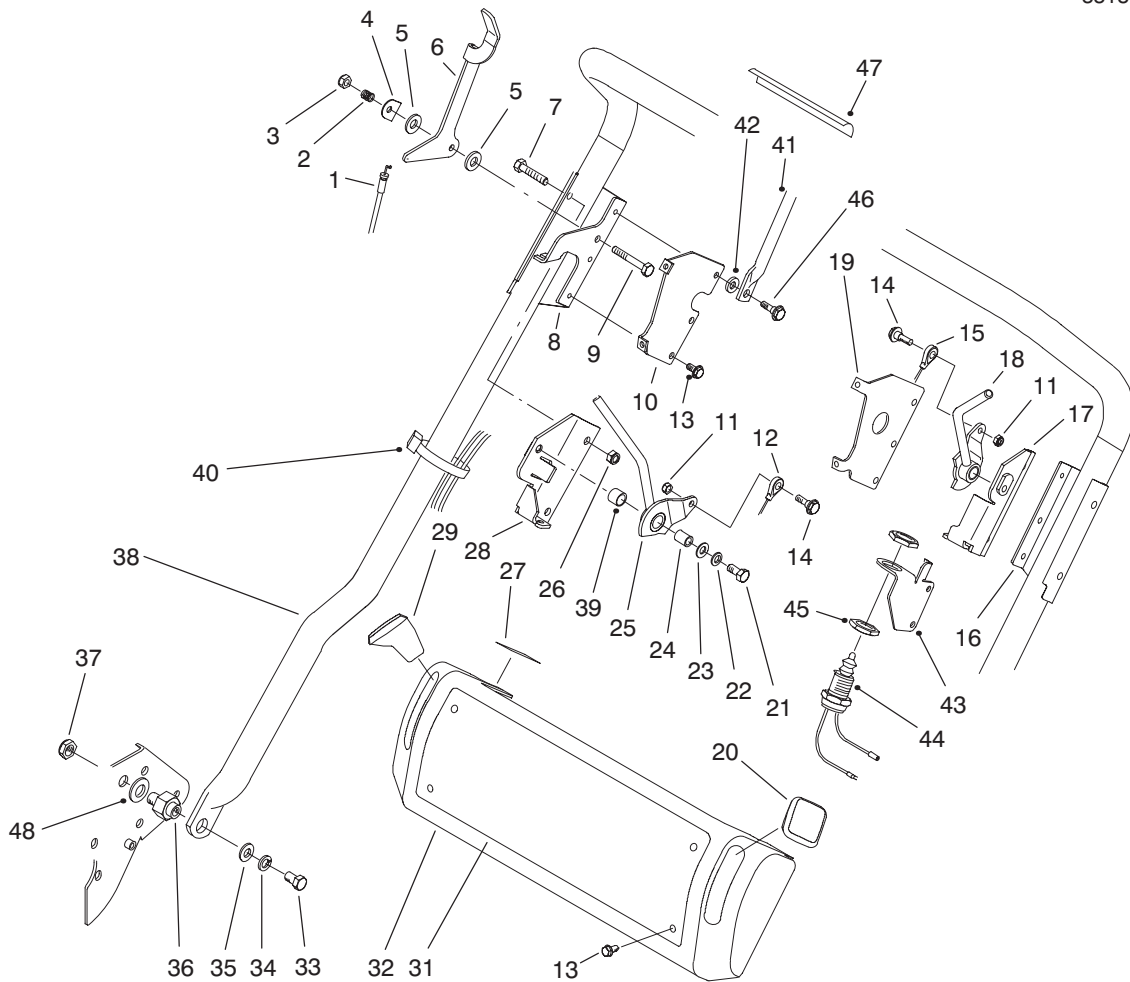


T-1996-6

ENGINE AND BELLCRANK ASSEMBLY (Continued)

| Ref. No. | Part No. | Description | No. Used |
|----------|----------|--|----------|
| 42 | 88-7350 | Spacer - Pulley Support | 1 |
| 43 | 88-7890 | Idler Pulley Assembly (Incl. Ref. #42, 44 & 45) | 1 |
| 44 | 38-7820 | Bearing - Ball | 2 |
| 45 | 32120-42 | Ring - Retaining | 1 |
| 46 | 3296-39 | Nut - Lock | 1 |
| 47 | 93-6092 | Guard - Muffler (Europe) | 1 |
| 48 | 94-5861 | Bracket - Module | 1 |
| 49 | 321-3 | Screw - Cap Hex. Hd. | 1 |

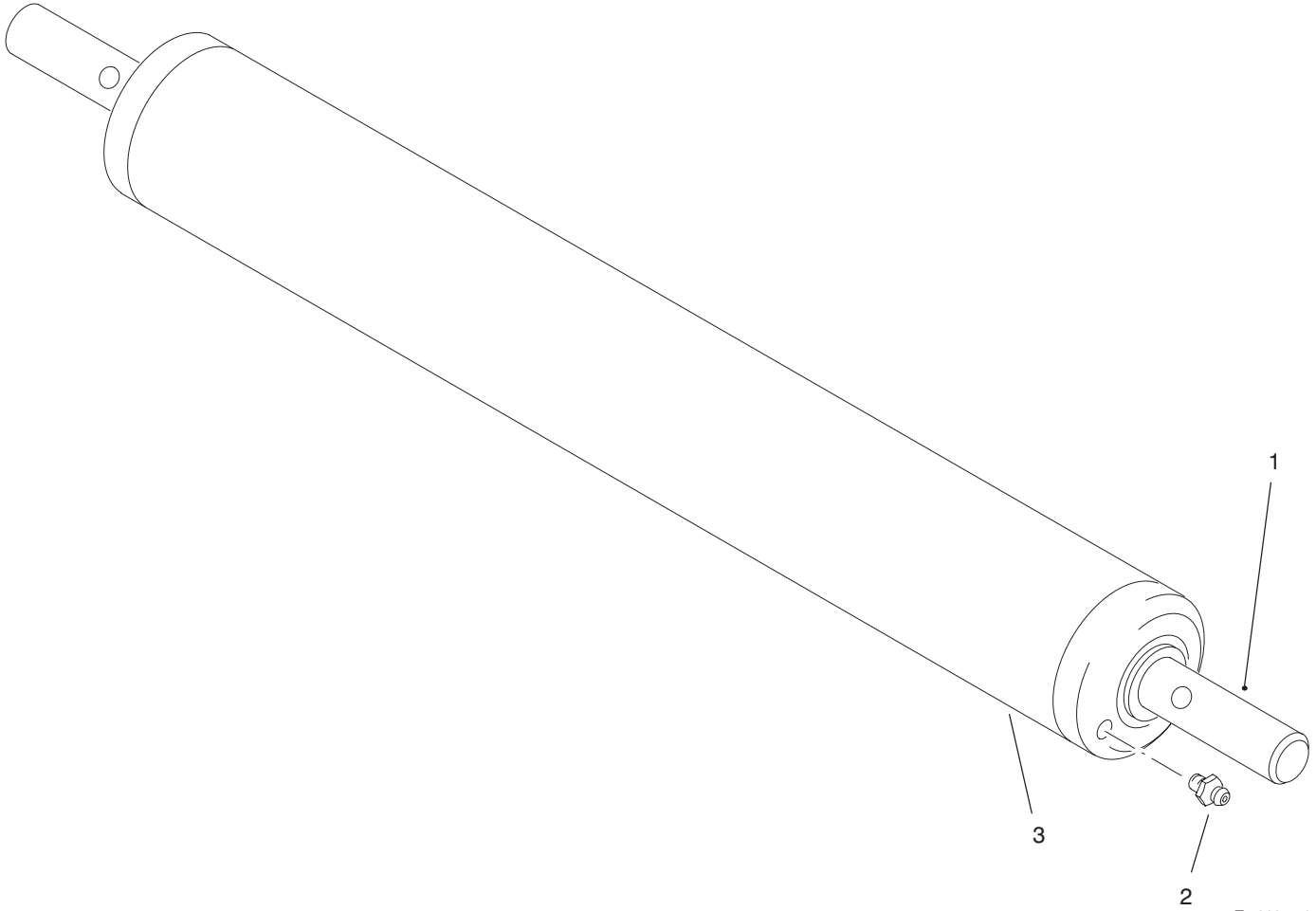
| Ref. No. | Part No. | Description | No. Used |
|----------|-----------|-----------------------------|----------|
| 50 | 94-5860 | Module - Interlock | 1 |
| 50 | 94-3431 | Module - Interlock (Europe) | 1 |
| 51 | 53-4420 | Decal - Fuel | 1 |
| 51 | 93-9886 | Decal - Fuel (Europe) | 1 |
| 51 | 93-9886 | Decal - Fuel (Japan) | 1 |
| 52 | 33113-012 | Screw - HH (Europe) | 4 |
| 53 | 3256-22 | Washer - Flat | 1 |
| 54 | 94-9015 | Screw - Cap Hex. Hd. | 1 |
| 55 | 95-0922 | Guide - Belt | 1 |



T-2405-4

HANDLE ASSEMBLY

| Ref. No. | Part No. | Description | No. Used | Ref. No. | Part No. | Description | No. Used |
|----------|----------|------------------------|----------|----------|----------|---------------------------|----------|
| 1 | 94-5869 | Cable - Throttle | 1 | 26 | 3296-29 | Nut - Lock | 4 |
| 2 | 3-5787 | Spring | 1 | 27 | 93-6085 | Decal - Throttle | 1 |
| 3 | 3296-56 | Nut - Lock | 1 | 28 | 93-6019 | Bracket - Clutch | 1 |
| 4 | 93-6016 | Washer - Retaining | 1 | 29 | 65-8970 | Knob - Black | 1 |
| 5 | 66-2921 | Washer - Friction | 2 | 31 | 93-9012 | Decal - Console | 1 |
| 6 | 93-6017 | Lever - Throttle | 1 | 31 | 94-6313 | Decal - Console (Europe) | 1 |
| 7 | 322-9 | Screw - HH | 4 | 31 | 94-6314 | Decal - Console (Japan) | 1 |
| 8 | 95-0908 | Bracket - Skid, Clutch | 1 | 32 | 93-6036 | Console | 1 |
| 9 | 321-8 | Screw - HH | 1 | 33 | 323-34 | Screw - HH | 2 |
| 10 | 93-6046 | Bracket - Console RH | 1 | 34 | 3253-21 | Washer - Lock | 2 |
| 11 | 3296-42 | Nut - Lock | 2 | 35 | 3256-24 | Washer - Flat | 2 |
| 12 | 94-5870 | Cable - Clutch | 1 | 36 | 93-6000 | Pin - Handle Pivot | 2 |
| 13 | 93-6083 | Screw | 10 | 37 | 3296-28 | Nut - Lock | 2 |
| 13 | 93-6083 | Screw (Europe) | 8 | 38 | 93-9044 | Handle | 1 |
| 14 | 11-9030 | Bolt - Shoulder | 2 | 39 | 256-206 | Bushing | 2 |
| 15 | 94-5871 | Cable - Brake | 1 | 40 | 3290-378 | Tie - Cable | 2 |
| 16 | 95-0907 | Bracket - Skid, Brake | 1 | 41 | 93-9009 | Bail Asm. (Europe) | 1 |
| 17 | 93-6022 | Bracket - Brake | 1 | | | (Incl. Ref. #47) | |
| 18 | 93-6058 | Lever - Brake | 1 | 42 | 93-6079 | Spacer (Europe) | 2 |
| 19 | 93-6047 | Bracket - Console LH | 1 | 43 | 93-6078 | Bracket - Switch (Europe) | 1 |
| 20 | 65-8971 | Knob - Red | 1 | 44 | 87-5490 | Switch (Europe) | 1 |
| 21 | 3210-7 | Screw - HH | 2 | | | (Incl. Ref. #45) | |
| 22 | 3253-4 | Washer - Lock | 2 | 45 | 3218-20 | Nut - Hex. Jam (Europe) | 2 |
| 23 | 3256-23 | Washer - Flat | 2 | 46 | 11-9030 | Bolt - Shoulder (Europe) | 2 |
| 24 | 88-7450 | Spacer | 2 | 47 | 93-9008 | Decal - Bail (Europe) | 1 |
| 25 | 93-6057 | Lever - Clutch | 1 | 48 | 94-5868 | Washer | 2 |



T-2685-1

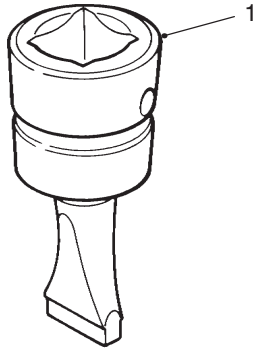
FULL ROLLER ASSEMBLY

| Ref. No. | Part No. | Description | No. Used |
|----------|----------|------------------------|----------|
| 1 | 52-3180 | Bearing – Front Roller | 2 |
| 2 | 302-5 | Fitting – Grease | 2 |

| Ref. No. | Part No. | Description | No. Used |
|----------|----------|---|----------|
| 3 | 95-0930 | Assembly – Roller Incl. Ref. #1 & 2) | 1 |

SPECIAL TOOLS

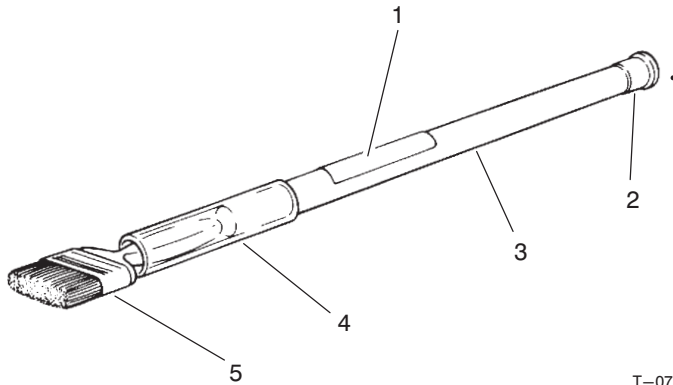
BEDKNIFE SCREW TOOL NO. *TOR510880



T-0729

| Ref. No. | Part No. | Description | No. Used |
|----------|----------|-----------------------|----------|
| 1 | | Tool – Bedknife Screw | 1 |

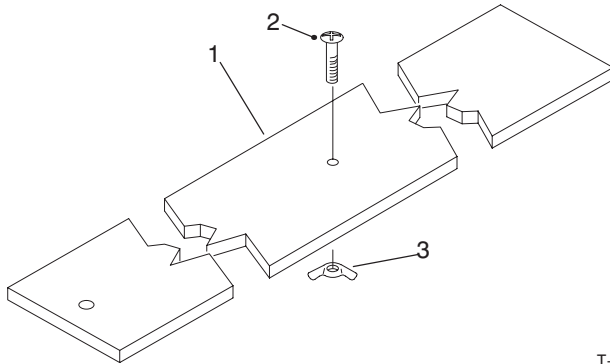
BACKLAPPING BRUSH ASSEMBLY NO. *TOR299100



T-0731

| Ref. No. | Part No. | Description | No. Used |
|----------|----------|---------------|----------|
| 1 | 12-9140 | Decal | 1 |
| 2 | 2410-18 | Plug | 1 |
| 3 | 29-9080 | Handle | 1 |
| 4 | 29-9090 | Hose – Handle | 1 |
| 5 | 36-4310 | Brush | 1 |

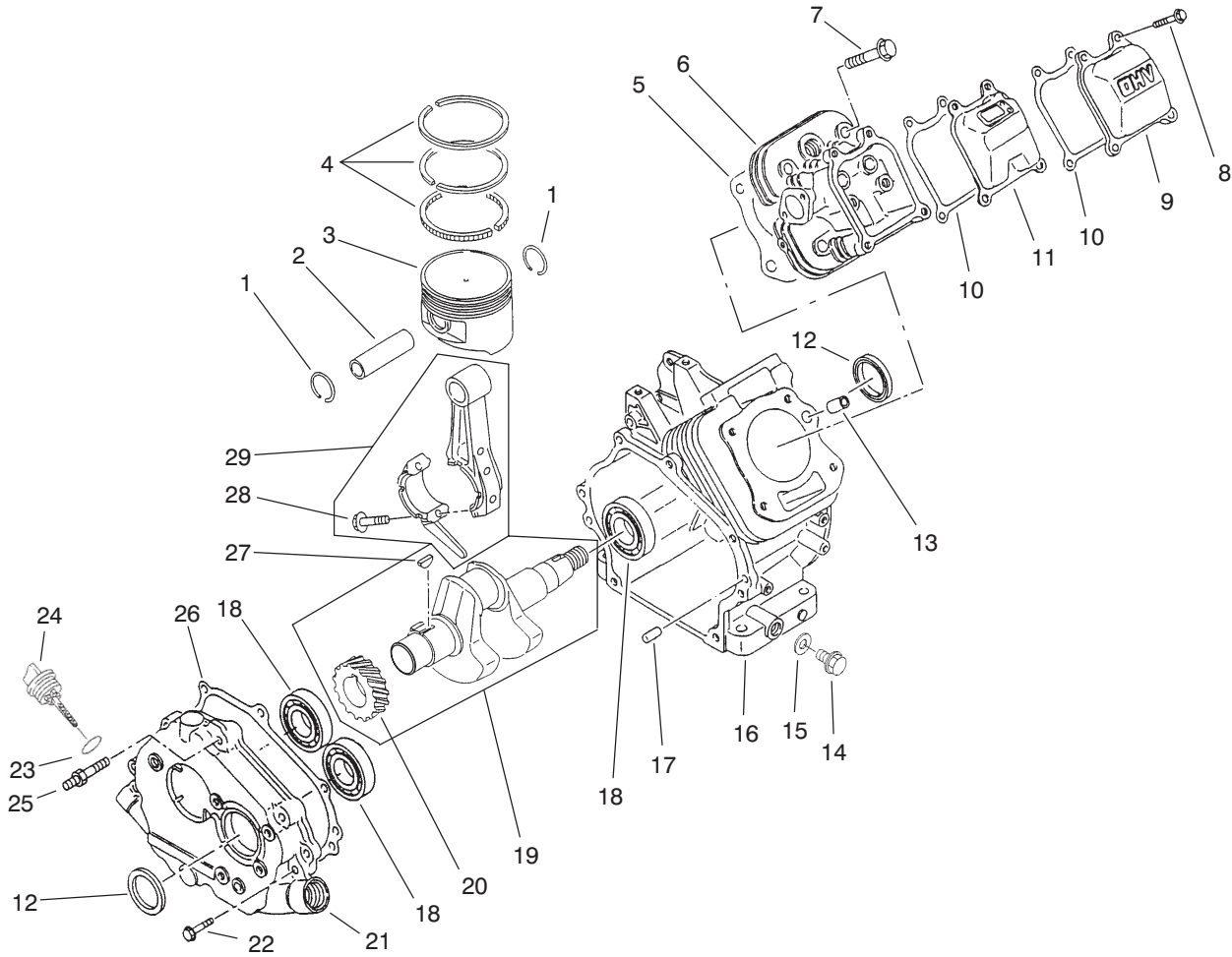
HEIGHT-OF-CUT BAR ASSEMBLY NO. 94-9010



T-2416

| Ref. No. | Part No. | Description | No. Used |
|----------|----------|-------------------|----------|
| 1 | 94-9011 | Bar | 1 |
| 2 | 32122-36 | Screw – Truss Hd. | 1 |
| 3 | 32103-2 | Nut – Wing | 1 |

*Obtain these items directly from OTC 2013 4th St. Owatonna, MN. 55060 1-800-533-0492
(in Minnesota and Canada 1-507-455-7050) Fax. 507-455-7011.

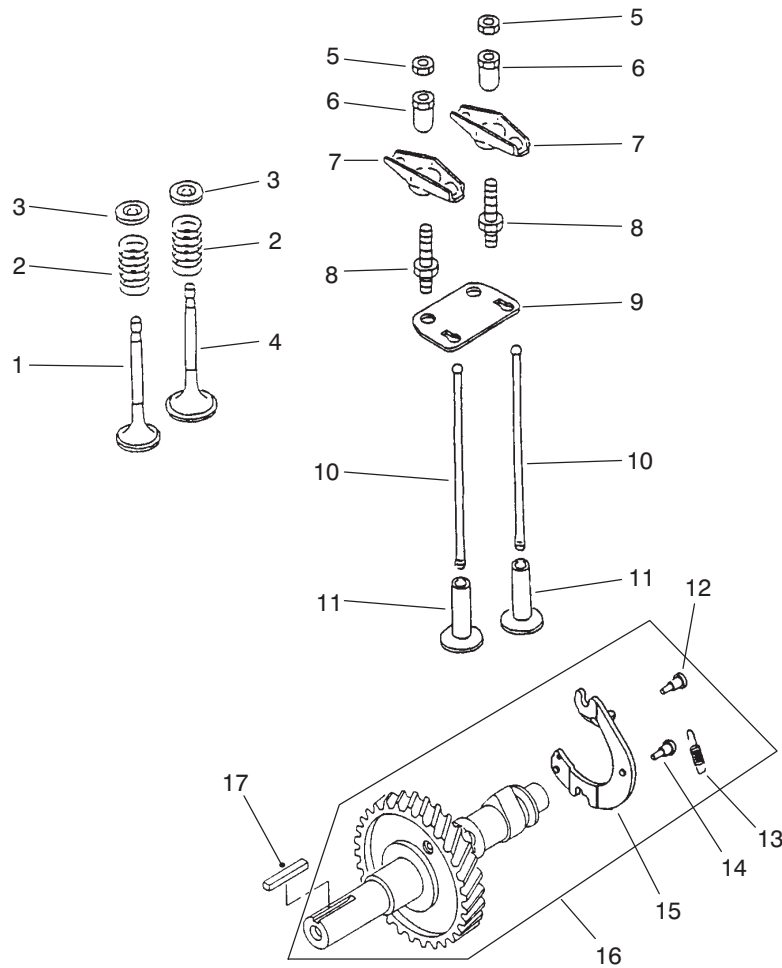


T-1623

ENGINE CRANKCASE ASSEMBLY

| Ref. No. | Part No. | Description | No. Used |
|----------|----------|-----------------------------|----------|
| 1 | 93-8500 | Ring - Retaining | 2 |
| 2 | 93-8501 | Pin - Piston | 1 |
| 3 | 93-8502 | Piston | 1 |
| * | 94-6836 | Piston (Oversized) | 1 |
| 4 | 93-8503 | Piston Ring Set | 1 |
| * | 94-6837 | Piston Ring Set (Oversized) | 1 |
| 5 | 93-8504 | Gasket - Head | 1 |
| 6 | 93-8505 | Head - Cylinder | 1 |
| 7 | 93-8506 | Bolt - Flanged | 4 |
| 8 | 94-6838 | Bolt - Flanged | 4 |
| 9 | 93-8508 | Case - Rocker | 1 |
| 10 | 93-8509 | Gasket - Rocker | 2 |
| 11 | 93-8510 | Breather | 1 |
| 12 | 93-8511 | Seal - Oil | 2 |
| 13 | 93-8512 | Pin | 2 |
| 14 | 93-8513 | Plug - Drain | 2 |
| 15 | 93-8514 | Gasket - Drain Plug | 2 |

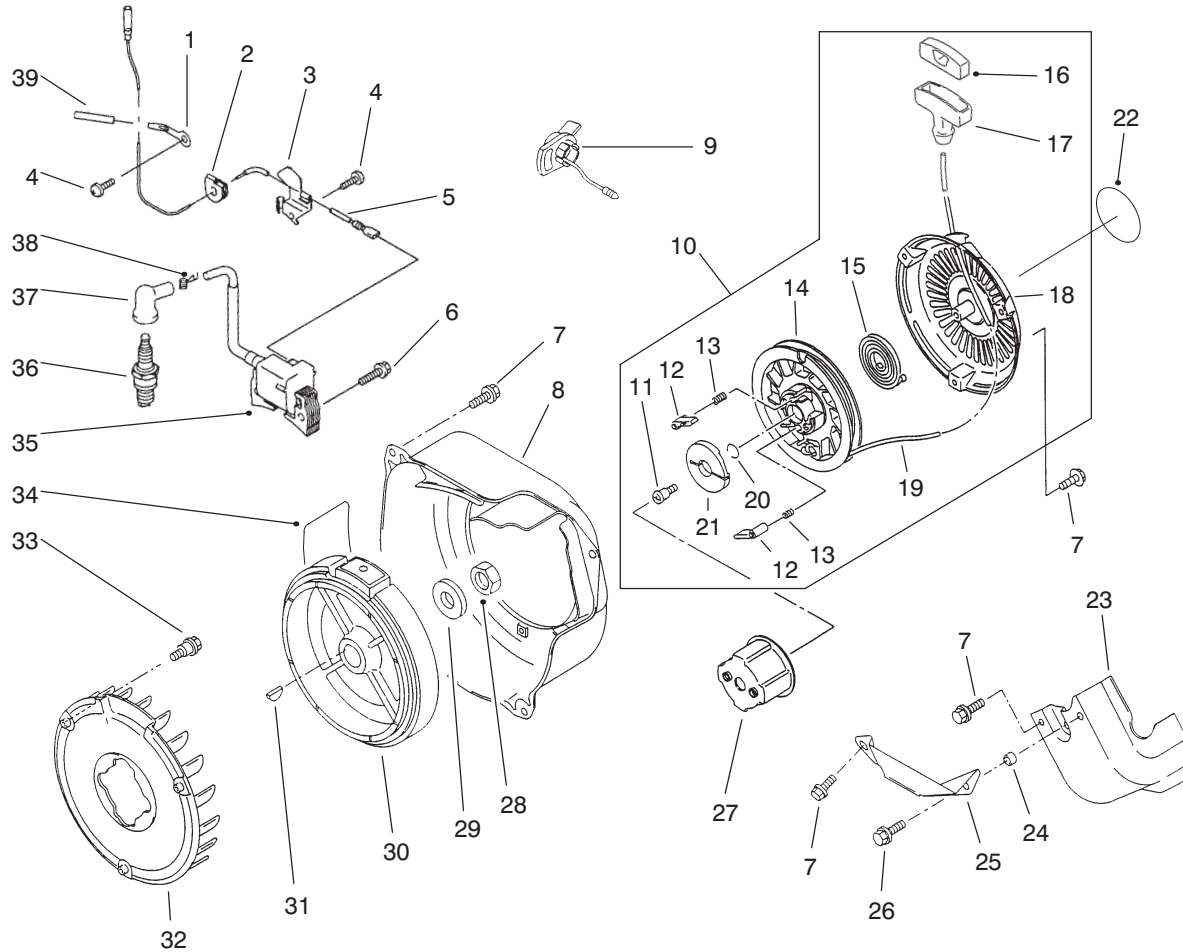
| Ref. No. | Part No. | Description | No. Used |
|----------|----------|--|----------|
| 16 | 93-8515 | Crankcase | 1 |
| 17 | 93-8516 | Pin | 2 |
| 18 | 93-8517 | Bearing - Ball | 3 |
| 19 | 93-8518 | Asm. - Crankshaft (Incl. Ref. #20 & 27) | 1 |
| 20 | 94-9043 | Gear - Helical | 1 |
| 21 | 93-8520 | Cover - Crankcase | 1 |
| 22 | 93-8521 | Bolt - Flanged | 7 |
| 23 | 94-9041 | Seal - O-Ring | 2 |
| 24 | 93-8523 | Cap - Oil Filler | 2 |
| 25 | 93-8524 | Stud | 1 |
| 26 | 93-8525 | Gasket - Crankcase | 1 |
| 27 | 93-8526 | Key | 1 |
| 28 | 93-8527 | Bolt - Rod | 2 |
| 29 | 93-8528 | Asm. - Connecting Rod (Incl. Ref. #28) | 1 |



T-1624

ENGINE CAMSHAFT & VALVES ASSEMBLY

| Ref. No. | Part No. | Description | No. Used | Ref. No. | Part No. | Description | No. Used |
|----------|----------|-------------------|----------|----------|----------|--|----------|
| 1 | 93-8529 | Valve - Exhaust | 1 | 10 | 93-8538 | Rod - Push | 2 |
| 2 | 93-8530 | Spring - Valve | 2 | 11 | 93-8539 | Tappet | 2 |
| 3 | 93-8531 | Retainer - Spring | 2 | 12 | 93-8540 | Pin | 2 |
| 4 | 93-8532 | Valve - Intake | 1 | 13 | 93-8541 | Spring | 1 |
| 5 | 93-8533 | Nut | 2 | 14 | 93-8542 | Pin | 1 |
| 6 | 93-8534 | Nut | 2 | 15 | 93-8543 | Decompressor | 1 |
| 7 | 93-8535 | Arm - Rocker | 2 | 16 | 93-8544 | Asm. - Camshaft (Incl. Ref. #12-15) | 1 |
| 8 | 93-8536 | Bolt | 2 | 17 | 93-8545 | Key | 1 |
| 9 | 93-8537 | Guide | 1 | | | | |

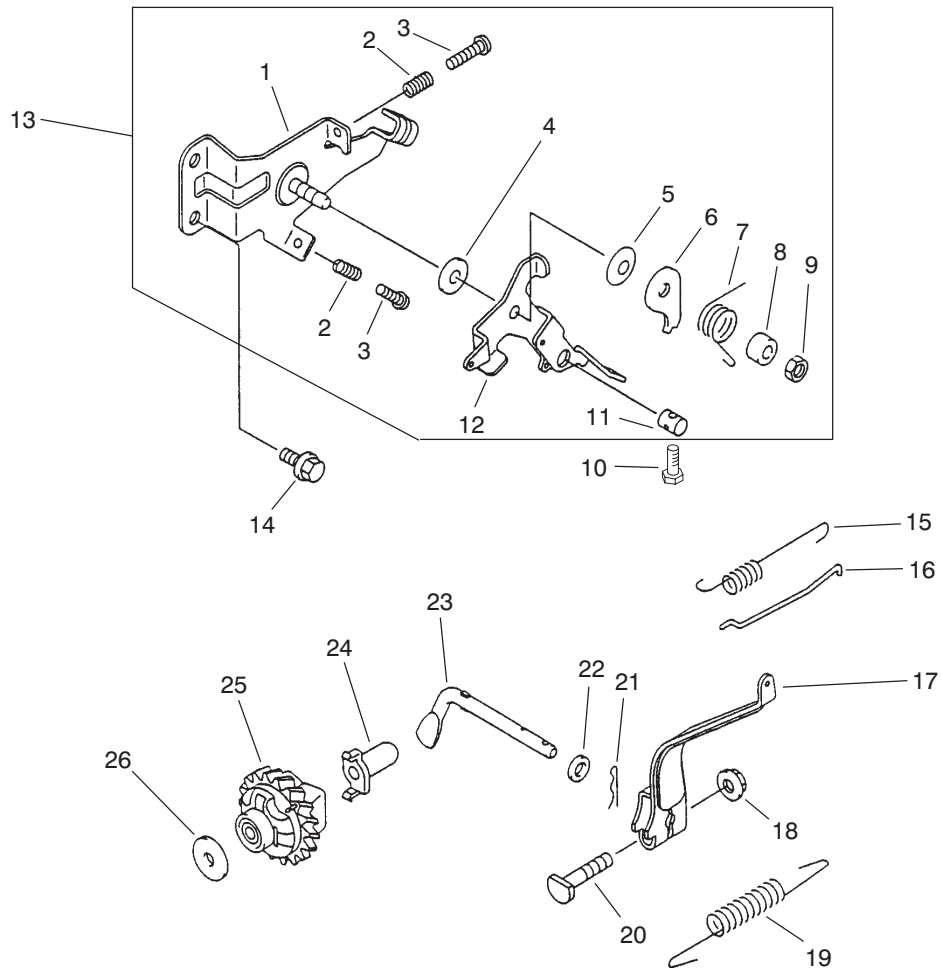


T-1625

ENGINE IGNITION ASSEMBLY

| Ref. No. | Part No. | Description | No. Used |
|----------|----------|--|----------|
| 1 | 94-9039 | Clamp | 1 |
| 2 | 93-8582 | Grommet | 1 |
| 3 | 93-8583 | Clamp | 1 |
| 4 | 93-8549 | Screw | 2 |
| 5 | 94-9038 | Lead - Wire | 1 |
| 6 | 93-8548 | Bolt - Flanged | 2 |
| 7 | 93-8550 | Bolt - Flanged | 10 |
| 8 | 94-9047 | Housing - Fan | 1 |
| 9 | 93-8546 | Switch | 1 |
| 10 | 93-8552 | Asm. - Recoil Starter (Incl. Ref. #11-21) | 1 |
| 11 | 93-8553 | Screw | 1 |
| 12 | 93-8554 | Pawl - Recoil | 2 |
| 13 | 93-8555 | Spring - Return | 2 |
| 14 | 93-8556 | Reel - Recoil | 1 |
| 15 | 93-8557 | Spring | 1 |
| 16 | 94-9044 | Cap - Grip | 1 |
| 17 | 94-9045 | Grip | 1 |
| 18 | 94-9046 | Case - Recoil | 1 |
| 19 | 93-8560 | Rope | 1 |
| 20 | 93-8561 | Ring - Retaining | 1 |

| Ref. No. | Part No. | Description | No. Used |
|----------|----------|------------------------------|----------|
| 21 | 93-8562 | Guide - Pawl | 1 |
| 22 | 94-9027 | Decal - Recoil | 1 |
| 23 | 93-8563 | Shroud - Engine | 1 |
| 24 | 93-8564 | Collar | 1 |
| 25 | 93-8565 | Shroud - Engine | 1 |
| 26 | 93-8566 | Bolt - Flanged | 1 |
| 27 | 93-8567 | Pulley - Recoil | 1 |
| 28 | 93-8568 | Nut | 1 |
| 29 | 93-8569 | Washer | 1 |
| 30 | 94-9026 | Flywheel | 1 |
| 31 | 93-8571 | Key | 1 |
| 32 | 93-8572 | Fan | 1 |
| 33 | 94-6840 | Bolt - Flanged | 3 |
| 34 | 93-8689 | Decal - Instruction | 1 |
| 35 | 94-9031 | Coil - Ignition | 1 |
| 36 | 93-8584 | Plug - Spark (NGK BPR5ES) | 1 |
| 37 | 93-8585 | Cap - Spark Plug | 1 |
| 38 | 94-9049 | Terminal | 1 |
| 39 | 94-9040 | Tube | 1 |

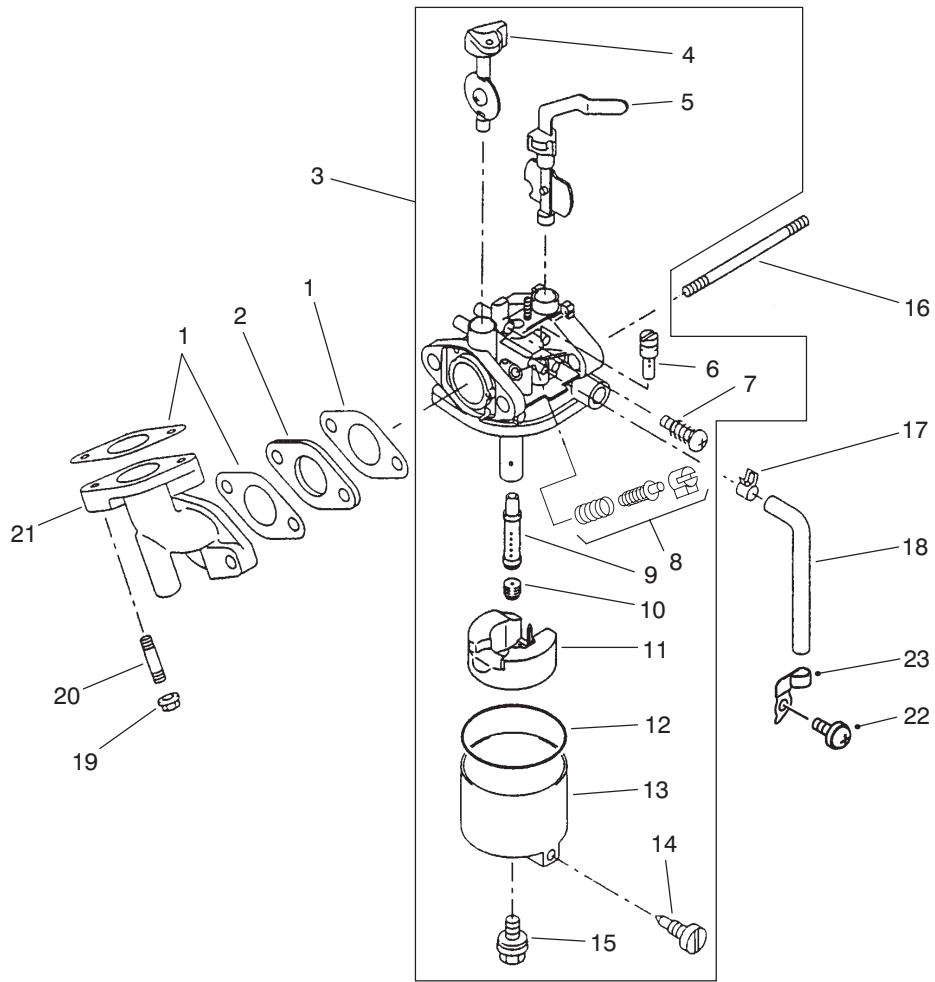


T-1618A

ENGINE GOVERNOR ASSEMBLY

| Ref. No. | Part No. | Description | No. Used |
|----------|----------|--|----------|
| 1 | 93-8587 | Panel - Control | 1 |
| 2 | 93-8588 | Spring | 2 |
| 3 | 93-8589 | Bolt | 2 |
| 4 | 93-8590 | Washer | 1 |
| 5 | 93-8591 | Spring | 1 |
| 6 | 93-8592 | Plate | 1 |
| 7 | 93-8593 | Spring | 1 |
| 8 | 93-8594 | Spacer | 1 |
| 9 | 93-8595 | Nut | 1 |
| 10 | 94-9015 | Screw - HH | 1 |
| 11 | 93-8597 | Nut | 1 |
| 12 | 93-8598 | Lever | 1 |
| 13 | 93-8599 | Asm. - Control Panel (Incl. Ref. #1-12) | 1 |

| Ref. No. | Part No. | Description | No. Used |
|----------|----------|-------------------|----------|
| 14 | 93-8600 | Bolt - Flanged | 2 |
| 15 | 93-8601 | Spring | 1 |
| 16 | 93-8602 | Rod - Governor | 1 |
| 17 | 93-8603 | Arm - Governor | 1 |
| 18 | 93-8631 | Nut | 1 |
| 19 | 94-9030 | Spring - Governor | 1 |
| 20 | 93-8606 | Bolt | 1 |
| 21 | 93-8607 | Pin - Snap | 1 |
| 22 | 93-8608 | Washer | 1 |
| 23 | 93-8609 | Arm - Pivot | 1 |
| 24 | 93-8610 | Sleeve | 1 |
| 25 | 94-6841 | Asm. - Governor | 1 |
| 26 | 94-6842 | Washer | 1 |



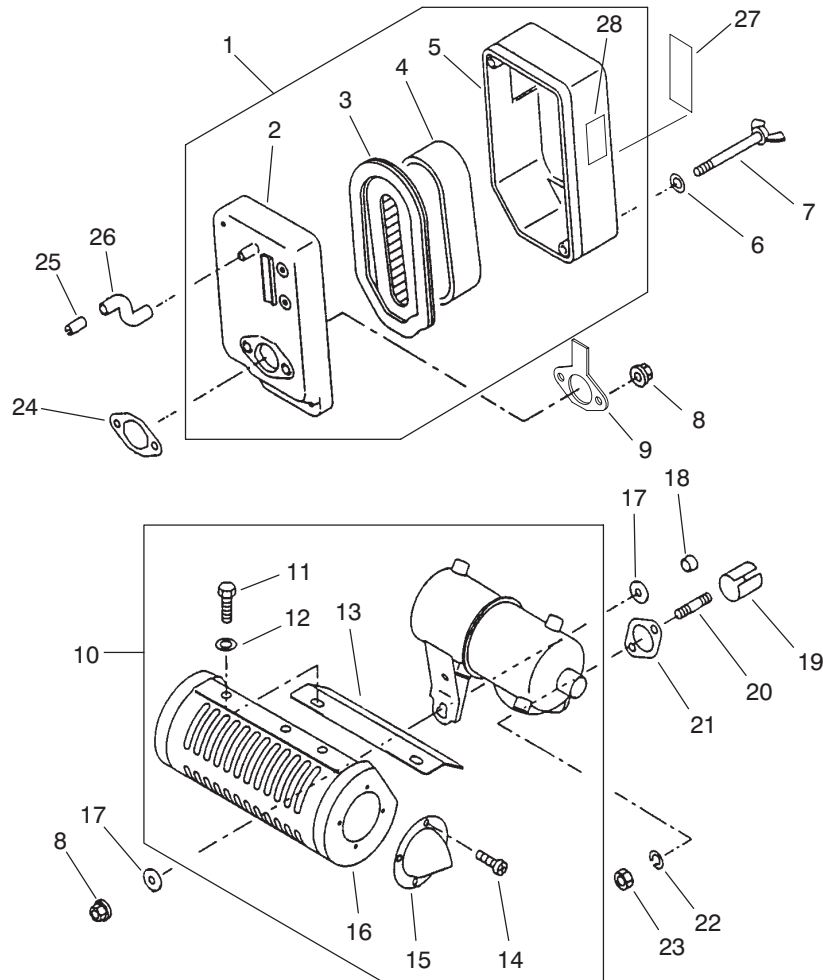
T-1619A

ENGINE CARBURETOR ASSEMBLY

| Ref. No. | Part No. | Description | No. Used |
|----------|----------|---|----------|
| 1 | 93-8613 | Gasket - Carburetor | 3 |
| 2 | 94-9048 | Insulator | 1 |
| 3 | 94-9032 | Asm. - Carburetor (Incl. Ref. #4-15) | 1 |
| 4 | 94-9033 | Valve - Throttle | 1 |
| 5 | 93-8617 | Valve - Choke | 1 |
| 6 | 94-9037 | Jet - Pilot #40 | 1 |
| 7 | 93-8619 | Asm. - Screw | 1 |
| †8 | | Limiters | 1 |
| 9 | 94-9035 | Nozzle - Main | 1 |
| 10 | 94-9036 | Jet - Main #65 | 1 |
| 11 | 94-6844 | Asm. - Float | 1 |
| 12 | 93-8624 | Gasket | 1 |

| Ref. No. | Part No. | Description | No. Used |
|----------|----------|--|----------|
| 13 | 93-8625 | Asm. - Float Chamber (Incl. Ref. #14) | 1 |
| 14 | 93-8626 | Asm. - Screw | 1 |
| 15 | 93-8627 | Bolt | 1 |
| 16 | 93-8628 | Bolt - Stud | 2 |
| 17 | 93-8629 | Clamp | 1 |
| 18 | 93-8630 | Tube | 1 |
| 19 | 93-8631 | Nut | 2 |
| 20 | 93-8632 | Bolt - Stud | 2 |
| 21 | 93-8633 | Pipe - Intake | 1 |
| 22 | 94-6845 | Screw | 1 |
| 23 | 94-6846 | Clamp | 1 |

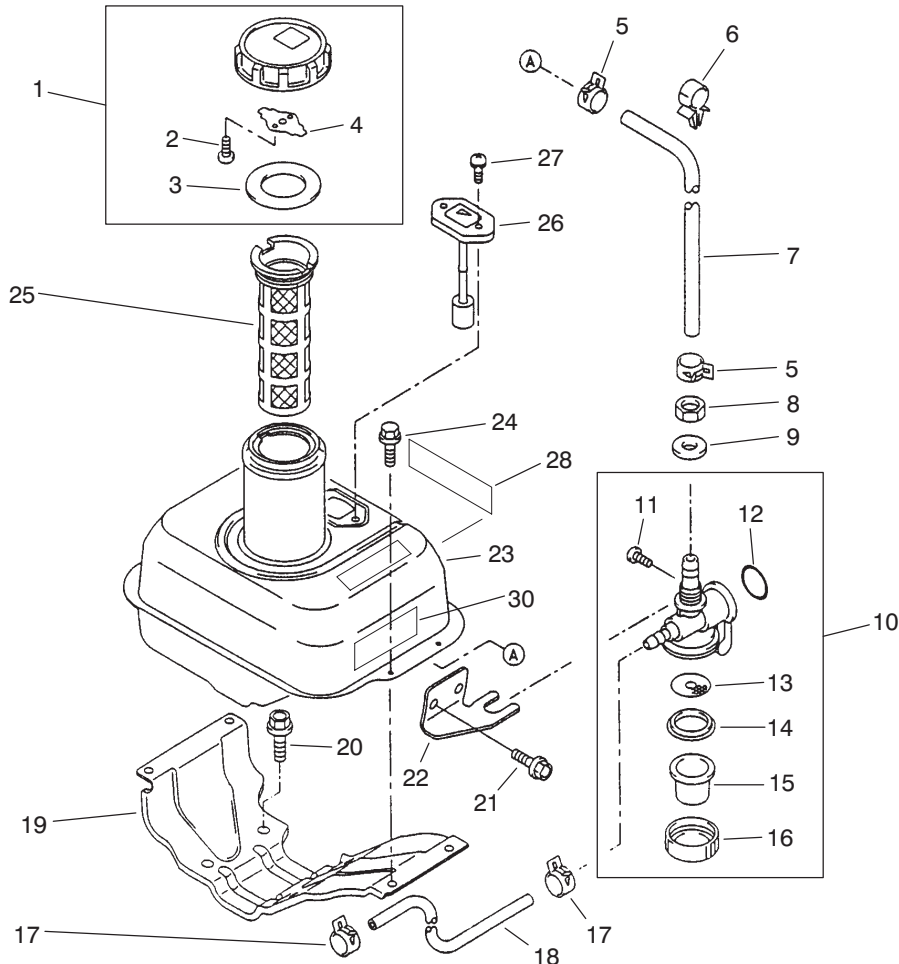
† Available only thru Authorized Toro or Kawasaki Dealer.



T-1620A

ENGINE AIR FILTER & MUFFLER ASSEMBLY

| Ref. No. | Part No. | Description | No. Used | Ref. No. | Part No. | Description | No. Used |
|----------|----------|--|----------|----------|----------|---------------------|----------|
| 1 | 93-8634 | Asm. - Air Filter (Incl. Ref. #2-5) | 1 | 14 | 93-8647 | Screw | 4 |
| 2 | 93-8635 | Case - Air Filter | 1 | 15 | 93-8648 | Pipe - Tail | 1 |
| 3 | 93-8636 | Element - Air Filter | 1 | 16 | 93-8649 | Cover - Muffler | 1 |
| 4 | 93-8637 | Element - Air Filter | 1 | 17 | 93-8650 | Washer | 2 |
| 5 | 93-8638 | Cap - Air Filter | 1 | 18 | 93-8651 | Collar | 1 |
| 6 | 93-8639 | Washer | 22 | 19 | 93-8652 | Pipe - Exhaust | 1 |
| 7 | 93-8640 | Bolt | 2 | 20 | 94-6848 | Bolt - Stud | 2 |
| 8 | 93-8641 | Nut | 3 | 21 | 93-8654 | Gasket - Muffler | 1 |
| 9 | 93-8642 | Plate - Air Filter | 1 | 22 | 93-8655 | Washer - Spring | 2 |
| 10 | 93-8643 | Asm. - Muffler (Incl. Ref. #11-16) | 1 | 23 | 93-8656 | Nut - Hex. | 2 |
| 11 | 93-8644 | Bolt | 4 | 24 | 93-8657 | Gasket - Air Filter | 1 |
| 12 | 93-8645 | Washer | 4 | 25 | 93-8658 | Pipe | 1 |
| 13 | 93-8646 | Cover - Muffler | 1 | 26 | 93-8659 | Tube | 1 |
| | | | | 27 | 93-8690 | Decal - Maintenance | 1 |
| | | | | 28 | 93-8687 | Decal - Choke | 1 |



T-1621A

ENGINE FUEL TANK ASSEMBLY

| Ref. No. | Part No. | Description | No. Used |
|----------|----------|--------------------------------------|----------|
| 1 | 93-8660 | Asm. - Fuel Cap (Incl. Ref. #2-4) | 1 |
| 2 | 93-8661 | Screw | 2 |
| 3 | 93-8662 | Gasket | 1 |
| 4 | 93-8663 | Spring | 1 |
| 5 | 93-8664 | Clamp | 2 |
| 6 | 93-8665 | Clamp | 1 |
| 7 | 93-8666 | Tube | 1 |
| 8 | 94-9042 | Nut | 1 |
| 9 | 93-8668 | Washer | 1 |
| 10 | 93-8669 | Asm. - Tap (Incl. Ref. #11-16) | 1 |
| 11 | 93-8670 | Screw | 1 |
| 12 | 93-8671 | Seal - O-Ring | 1 |
| 13 | 94-6849 | Filter - Tap | 1 |
| 14 | 93-8673 | Gasket | 1 |

| Ref. No. | Part No. | Description | No. Used |
|----------|----------|-----------------|----------|
| 15 | 93-8674 | Cup - Tap | 1 |
| 16 | 93-8675 | Nut | 1 |
| 17 | 93-8676 | Clamp | 2 |
| 18 | 93-8677 | Tube | 1 |
| 19 | 93-8678 | Bracket - Tank | 1 |
| 20 | 94-6825 | Bolt - Flanged | 4 |
| 21 | 93-8680 | Bolt - Flanged | 2 |
| 22 | 93-8681 | Bracket | 1 |
| 23 | 93-8682 | Tank - Fuel | 1 |
| 24 | 93-8683 | Bolt | 4 |
| 25 | 94-6826 | Filter - Fuel | 1 |
| 26 | 93-8685 | Gauge - Fuel | 1 |
| 27 | 93-8686 | Screw | 2 |
| 28 | 94-9028 | Decal - Model | 1 |
| 30 | 93-8692 | Decal - Warning | 1 |

TORO PART NUMBER INDEX

3318—388 REV B

| Part No. | Description | Pg. No. | Ref. No. | Qty. | Part No. | Description | Pg. No. | Ref. No. | Qty. |
|----------|--------------------------|---------|----------|------|----------|--------------------------|---------|----------|------|
| 3-5787 | Spring | 13 | 2 | 1 | 65-7980 | Nut - Flange | 6 | 36 | 8 |
| 11-9030 | Bolt - Shoulder | 11 | 13 | 3 | 65-8020 | Lever - Retaining | 6 | 29 | 2 |
| 11-9030 | Bolt - Shoulder | 13 | 14 | 2 | 65-8030 | Bolt - Mounting, Long | 6 | 31 | 2 |
| 11-9030 | Bolt - Shoulder | 9 | 29 | 1 | 65-8040 | Bolt - Mounting, Short | 6 | 32 | 2 |
| 11-9030 | Bolt - Shoulder (Europe) | 13 | 46 | 2 | 65-8050 | Spring | 6 | 30 | 2 |
| 12-9140 | Decal | 15 | 1 | 1 | 65-8260 | Spacer - Engine Shaft | 11 | 12 | 1 |
| 29-9080 | Handle | 15 | 3 | 1 | 65-8270 | Washer | 11 | 39 | 1 |
| 29-9090 | Hose - Handle | 15 | 4 | 1 | 65-8290 | Standoff - Cover | 4 | 48 | 2 |
| 36-4310 | Brush | 15 | 5 | 1 | 65-8610 | Lever - Brake | 9 | 30 | 1 |
| 38-7820 | Bearing - Ball | 3 | 7 | 1 | 65-8640 | Housing - Bearing | 3 | 41 | 1 |
| 38-7820 | Bearing - Ball | 6 | 8 | 2 | 65-8640 | Housing - Bearing | 6 | 48 | 1 |
| 38-7820 | Bearing - Ball | 12 | 44 | 2 | 65-8700 | Band - Brake | 9 | 35 | 1 |
| 38-7820 | Bearing - Ball | 9 | 47 | 2 | 65-8720 | Closure | 6 | 54 | 2 |
| 48-7610 | Screw - HH | 6 | 35 | 8 | 65-8730 | Clamp - Bearing | 6 | 2 | 4 |
| 48-7700 | Screw - Cap Hex. Hd. | 11 | 22 | 7 | 65-8770 | Bushing | 11 | 10 | 4 |
| 48-7700 | Screw - HH | 6 | 33 | 6 | 65-8910 | Pulley - Countershaft | 10 | 52 | 1 |
| 48-9460 | Screw - Cap Hex. Hd. | 11 | 40 | 1 | 65-8960 | Boot - Clutch | 3 | 27 | 1 |
| 52-2860 | Washer | 5 | 13 | 4 | 65-8970 | Knob - Black | 13 | 29 | 1 |
| 52-2890 | Bushing - Steering Links | 2 | 56 | 2 | 65-8971 | Knob - Red | 13 | 20 | 1 |
| 52-2900 | Washer - Poly | 5 | 12 | 4 | 65-9080 | Belt | 10 | 51 | 1 |
| 52-3180 | Bearing | 2 | 40 | 2 | 65-9120 | Pulley - Differential | 7 | 10 | 1 |
| 52-3180 | Bearing - Front Roller | 14 | 1 | 2 | 66-2921 | Washer - Friction | 13 | 5 | 2 |
| 53-4420 | Decal - Fuel | 12 | 51 | 1 | 67-5360 | Decal - Danger | 11 | 26 | 1 |
| 57-4910 | Screw - Special | 5 | 17 | 16 | 68-9420 | Washer - Lock | 6 | 24 | 6 |
| 62-5070 | Decal - Warning | 5 | 5 | 1 | 83-2560 | Decal - Hot (Japan) | 11 | 18 | 1 |
| 63-8440 | Decal - Hot | 11 | 18 | 1 | 84-6560 | Decal - Warning (Japan) | 5 | 5 | 1 |
| 63-9510 | Asm. - Bushing | 2 | 57 | 2 | 84-7280 | Decal - Danger (Japan) | 11 | 26 | 1 |
| 65-5210 | Belt | 6 | 45 | 1 | 86-7130 | Spacer | 6 | 17 | 2 |
| 65-6200 | Belt - Drive, Reel | 4 | 57 | 1 | 86-7130 | Spacer - Short | 9 | 36 | 1 |
| 65-6220 | Cover - Bearing | 6 | 40 | 1 | 86-7140 | Spacer - Long | 9 | 49 | 1 |
| 65-6270 | Bolt - Bedbar | 5 | 15 | 2 | 87-5490 | Switch (Europe) | 13 | 44 | 1 |
| 65-6290 | Spring - Detent, Clutch | 3 | 21 | 1 | 87-5490 | Switch | 11 | 16 | 1 |
| 65-6450 | Bracket - Shield LH | 5 | 11 | 1 | 88-7090 | Spacer - LH | 1 | * | 1 |
| 65-6460 | Bracket - Shield RH | 5 | 2 | 1 | 88-7100 | Spacer - RH | 1 | 6 | 1 |
| 65-6520 | Spacer - Bearing | 7 | 5 | 1 | 88-7150 | Key - Square | 3 | 31 | 2 |
| 65-6530 | Spacer - Seal | 7 | 7 | 1 | 88-7170 | Lever - Clutch | 3 | 29 | 1 |
| 65-6590 | Flangette | 6 | 51 | 2 | 88-7190 | Spacer - Pulley Support | 6 | 13 | 2 |
| 65-6660 | Pulley | 6 | 18 | 2 | 88-7190 | Spacer - Support, Pulley | 4 | 53 | 1 |
| 65-6700 | Flangette | 9 | 19 | 1 | 88-7200 | Washer - Flat | 3 | 6 | 1 |
| 65-6710 | Flangette | 9 | 17 | 1 | 88-7200 | Washer - Flat | 6 | 10 | 2 |
| 65-6720 | Plate - Screw | 9 | 12 | 1 | 88-7200 | Washer - Flat | 9 | 10 | 1 |
| 65-6760 | Housing - Bearing | 9 | 37 | 1 | 88-7230 | Housing - Countershaft | 9 | 16 | 1 |
| 65-6810 | Support - Brake | 9 | 45 | 2 | 88-7240 | Cover - Box Front | 10 | 56 | 1 |
| 65-6850 | Key | 3 | 35 | 1 | 88-7250 | Cover - Box Rear | 9 | 6 | 1 |
| 65-6850 | Key | 10 | 50 | 1 | 88-7350 | Spacer - Pulley Support | 12 | 42 | 1 |
| 65-6901 | Strip - Cover Seal | 10 | 54 | 1 | 88-7380 | Spacer - Pulley Support | 9 | 11 | 1 |
| 65-6902 | Strip - Cover Seal | 9 | 7 | 1 | 88-7450 | Spacer | 13 | 24 | 2 |
| 65-6903 | Strip - Cover Seal | 10 | 55 | 1 | 88-7470 | Housing - LH | 6 | 12 | 1 |
| 65-6940 | Clutch - Jaw Driver | 3 | 18 | 1 | 88-7490 | Housing - RH | 6 | * | 1 |
| 65-6950 | Clutch - Jaw Driven | 3 | 17 | 1 | 88-7510 | Shaft - Drum RH | 7 | * | 1 |
| 65-6970 | Seal - Felt | 3 | 44 | 1 | 88-7520 | Shaft - Drum LH | 7 | 14 | 1 |
| 65-6980 | Key | 3 | 16 | 1 | 88-7530 | Spacer | 6 | 11 | 2 |
| 65-7131 | Trim - Cover, Arm | 4 | 52 | 1 | 88-7540 | Washer - Backup | 6 | 46 | 2 |
| 65-7190 | Cover - Arm, Groomer | 4 | 51 | 1 | 88-7570 | Asm. - Wheel, Transport | 6 | * | |
| 65-7510 | Grommet - Handle | 1 | 27 | 2 | 88-7580 | Shaft - Wheel, LH | 6 | 23 | 1 |
| 65-7660 | Decal - Reel Engagement | 3 | 4 | 1 | 88-7590 | Shaft - Wheel, RH | 6 | * | 1 |
| 65-7880 | Spring - Extension | 1 | 10 | 1 | 88-7610 | Hub | 6 | 28 | 2 |
| 65-7890 | Bracket | 1 | 9 | 1 | 88-7620 | Decal - Danger | 11 | 19 | 1 |
| 65-7900 | Retainer - Spring | 1 | 12 | 1 | 88-7670 | Base - Engine | 1 | 26 | 1 |
| 65-7910 | Spacer | 1 | 17 | 2 | 88-7680 | Cover - Drum Belt LH | 6 | 22 | 1 |
| 65-7940 | Tire | 6 | 26 | 2 | 88-7690 | Cover - Drum Belt RH | 6 | * | 1 |
| 65-7950 | Tube W/Valve Stem | 6 | 34 | 2 | 88-7700 | Cover - Reel Drive | 3 | 3 | 1 |
| 65-7960 | Rim - Deep | 6 | 27 | 2 | 88-7710 | Seal - Countershaft | 10 | 53 | 1 |
| 65-7970 | Rim - Shallow | 6 | 25 | 2 | 88-7720 | Washer - Wave | 3 | 45 | 1 |

*Not Illustrated

TORO PART NUMBER INDEX (Cont.)

| Part No. | Description | Pg. No. | Ref. No. | Qty. | Part No. | Description | Pg. No. | Ref. No. | Qty. |
|----------|---------------------------|---------|----------|------|----------|-----------------------------|---------|----------|------|
| 88-7770 | Seal - Strip, Front | 4 | 60 | 1 | 93-7287 | Decal - Service (Finnish) | 5 | 4 | 1 |
| 88-7780 | Seal - Strip, Rear | 4 | 59 | 1 | 93-7288 | Decal - Service (Italian) | 5 | 4 | 1 |
| 88-7790 | Seal - Strip, Upper | 4 | 61 | 1 | 93-7289 | Decal - Service (Norwegian) | 5 | 4 | 1 |
| 88-7800 | Seal - Strip, Lower | 4 | 58 | 1 | 93-7290 | Decal - Service | 5 | 4 | 1 |
| 88-7810 | Seal - Strip, Drum Cover | 6 | 41 | 1 | 93-7291 | Decal - Service (Swedish) | 5 | 4 | 1 |
| 88-7830 | Asm. - Clutch & Pulley | 3 | 15 | 1 | 93-7346 | Decal - Reel Engagement | 3 | 4 | 1 |
| 88-7840 | Asm. - Pulley & Drive | 4 | 56 | 1 | 93-7348 | Decal - Danger (Europe) | 11 | 19 | 1 |
| 88-7850 | Asm. - Pulley, Idler | 6 | 14 | 1 | 93-7842 | Decal - Blank (Japan) | 1 | 22 | 1 |
| 88-7850 | Asm. - Pulley, Idler | 4 | 54 | 1 | 93-8064 | Decal - Warning (Europe) | 5 | 5 | 1 |
| 88-7860 | Spacer | 3 | 26 | 1 | 93-8069 | Decal - Hot (Europe) | 11 | 18 | 1 |
| 88-7870 | Asm. - Pulley, Idler | 9 | 46 | 1 | 93-8500 | Ring - Retaining | 16 | 1 | 2 |
| 88-7880 | Bearing | 6 | 52 | 2 | 93-8501 | Pin - Piston | 16 | 2 | 1 |
| 88-7890 | Idler Pulley Assembly | 12 | 43 | 1 | 93-8502 | Piston | 16 | 3 | 1 |
| 88-7960 | Bracket - Throttle Cable | 11 | 27 | 1 | 93-8503 | Piston Ring Set | 16 | 4 | 1 |
| 88-7970 | Clip | 9 | 25 | 1 | 93-8504 | Gasket - Head | 16 | 5 | 1 |
| 88-8950 | Decal - Warning, Belt | 1 | 4 | 3 | 93-8505 | Head - Cylinder | 16 | 6 | 1 |
| 92-4813 | Decal - Danger (Japan) | 11 | 19 | 1 | 93-8506 | Bolt - Flanged | 16 | 7 | 4 |
| 92-4817 | Decal - Reel Engagement | 3 | 4 | 1 | 93-8508 | Case - Rocker | 16 | 9 | 1 |
| 92-7302 | Nut - Bearing Lock | 6 | 42 | 1 | 93-8509 | Gasket - Rocker | 16 | 10 | 2 |
| 92-8013 | Housing - Clutch | 3 | 33 | 1 | 93-8510 | Breather | 16 | 11 | 1 |
| 92-8914 | Bolt - Tapered Face | 2 | 47 | 4 | 93-8511 | Seal - Oil | 16 | 12 | 2 |
| 92-9212 | Pulley - Input Shaft | 9 | 34 | 1 | 93-8512 | Pin | 16 | 13 | 2 |
| 92-9216 | Pulley - Input Drive | 11 | 11 | 1 | 93-8513 | Plug - Drain | 16 | 14 | 2 |
| 92-9218 | V-Belt, Matched Set | 11 | 38 | 1 | 93-8514 | Gasket - Drain Plug | 16 | 15 | 2 |
| 93-1448 | Asm. - Cover, Bracket | 9 | 13 | 1 | 93-8515 | Crankcase | 16 | 16 | 1 |
| 93-6000 | Pin - Handle Pivot | 13 | 36 | 2 | 93-8516 | Pin | 16 | 17 | 2 |
| 93-6003 | Lever - Clutch | 11 | 35 | 1 | 93-8517 | Bearing - Ball | 16 | 18 | 3 |
| 93-6011 | Spring - Torsion | 11 | 14 | 1 | 93-8518 | Asm. - Crankshaft | 16 | 19 | 1 |
| 93-6012 | Spring - Torsion, Clutch | 11 | 32 | 1 | 93-8520 | Cover - Crankcase | 16 | 21 | 1 |
| 93-6013 | Shield - Belt | 11 | 33 | 1 | 93-8521 | Bolt - Flanged | 16 | 22 | 7 |
| 93-6014 | Lever | 11 | 9 | 1 | 93-8523 | Cap - Oil Filler | 16 | 24 | 2 |
| 93-6015 | Bracket - Clutch | 11 | 17 | 1 | 93-8524 | Stud | 16 | 25 | 1 |
| 93-6016 | Washer - Retaining | 13 | 4 | 1 | 93-8525 | Gasket - Crankcase | 16 | 26 | 1 |
| 93-6017 | Lever - Throttle | 13 | 6 | 1 | 93-8526 | Key | 16 | 27 | 1 |
| 93-6019 | Bracket - Clutch | 13 | 28 | 1 | 93-8527 | Bolt - Rod | 16 | 28 | 2 |
| 93-6022 | Bracket - Brake | 13 | 17 | 1 | 93-8528 | Asm. - Connecting Rod | 16 | 29 | 1 |
| 93-6024 | Bushing - Handle, Support | 2 | 29 | 2 | 93-8529 | Valve - Exhaust | 17 | 1 | 1 |
| 93-6029 | Pin - Ring | 2 | 31 | 2 | 93-8530 | Spring - Valve | 17 | 2 | 2 |
| 93-6036 | Console | 13 | 32 | 1 | 93-8531 | Retainer - Spring | 17 | 3 | 2 |
| 93-6037 | Arm - Handle, RH | 2 | * | 1 | 93-8532 | Valve - Intake | 17 | 4 | 1 |
| 93-6038 | Arm - Handle, LH | 2 | 28 | 1 | 93-8533 | Nut | 17 | 5 | 2 |
| 93-6046 | Bracket - Console RH | 13 | 10 | 1 | 93-8534 | Nut | 17 | 6 | 2 |
| 93-6047 | Bracket - Console LH | 13 | 19 | 1 | 93-8535 | Arm - Rocker | 17 | 7 | 2 |
| 93-6048 | Bracket - HOC, RH | 2 | * | 1 | 93-8536 | Bolt | 17 | 8 | 2 |
| 93-6049 | Bracket - HOC, LH | 2 | 39 | 1 | 93-8537 | Guide | 17 | 9 | 1 |
| 93-6051 | Screw - Height-of-Cut | 2 | 34 | 2 | 93-8538 | Rod - Push | 17 | 10 | 2 |
| 93-6057 | Lever - Clutch | 13 | 25 | 1 | 93-8539 | Tappet | 17 | 11 | 2 |
| 93-6058 | Lever - Brake | 13 | 18 | 1 | 93-8540 | Pin | 17 | 12 | 2 |
| 93-6064 | Seal - Grass Catcher | 2 | 48 | 1 | 93-8541 | Spring | 17 | 13 | 1 |
| 93-6073 | Retainer | 11 | 4 | 1 | 93-8542 | Pin | 17 | 14 | 1 |
| 93-6074 | Stud | 11 | 3 | 1 | 93-8543 | Decompressor | 17 | 15 | 1 |
| 93-6078 | Bracket - Switch (Europe) | 13 | 43 | 1 | 93-8544 | Asm. - Camshaft | 17 | 16 | 1 |
| 93-6079 | Spacer (Europe) | 13 | 42 | 2 | 93-8545 | Key | 17 | 17 | 1 |
| 93-6083 | Screw | 13 | 13 | 10 | 93-8546 | Switch | 18 | 9 | 1 |
| 93-6083 | Screw (Europe) | 13 | 13 | 8 | 93-8548 | Bolt - Flanged | 18 | 6 | 2 |
| 93-6085 | Decal - Throttle | 13 | 27 | 1 | 93-8549 | Screw | 18 | 4 | 2 |
| 93-6090 | Arm - Height-of-Cut | 2 | 38 | 2 | 93-8550 | Bolt - Flanged | 18 | 7 | 10 |
| 93-6092 | Guard - Muffler (Europe) | 12 | 47 | 1 | 93-8552 | Asm. - Recoil Starter | 18 | 10 | 1 |
| 93-6098 | Decal - Service | 5 | 4 | 1 | 93-8553 | Screw | 18 | 11 | 1 |
| 93-6099 | Washer | 11 | 31 | 1 | 93-8554 | Pawl - Recoil | 18 | 12 | 2 |
| 93-7252 | Decal - CE Mark (Europe) | 1 | 22 | 1 | 93-8555 | Spring - Return | 18 | 13 | 2 |
| 93-7273 | Decal - Danger (Europe) | 11 | 26 | 1 | 93-8556 | Reel - Recoil | 18 | 14 | 1 |
| 93-7285 | Decal - Service (Danish) | 5 | 4 | 1 | 93-8557 | Spring | 18 | 15 | 1 |
| 93-7286 | Decal - Service (Dutch) | 5 | 4 | 1 | 93-8560 | Rope | 18 | 19 | 1 |

*Not Illustrated

TORO PART NUMBER INDEX (Cont.)

| Part No. | Description | Pg. No. | Ref. No. | Qty. | Part No. | Description | Pg. No. | Ref. No. | Qty. |
|----------|----------------------|---------|----------|------|----------|---------------------------|---------|----------|------|
| 93-8561 | Ring - Retaining | 18 | 20 | 1 | 93-8648 | Pipe - Tail | 21 | 15 | 1 |
| 93-8562 | Guide - Pawl | 18 | 21 | 1 | 93-8649 | Cover - Muffler | 21 | 16 | 1 |
| 93-8563 | Shroud - Engine | 18 | 23 | 1 | 93-8650 | Washer | 21 | 17 | 2 |
| 93-8564 | Collar | 18 | 24 | 1 | 93-8651 | Collar | 21 | 18 | 1 |
| 93-8565 | Shroud - Engine | 18 | 25 | 1 | 93-8652 | Pipe - Exhaust | 21 | 19 | 1 |
| 93-8566 | Bolt - Flanged | 18 | 26 | 1 | 93-8654 | Gasket - Muffler | 21 | 21 | 1 |
| 93-8567 | Pulley - Recoil | 18 | 27 | 1 | 93-8655 | Washer - Spring | 21 | 22 | 2 |
| 93-8568 | Nut | 18 | 28 | 1 | 93-8656 | Nut - Hex. | 21 | 23 | 2 |
| 93-8569 | Washer | 18 | 29 | 1 | 93-8657 | Gasket - Air Filter | 21 | 24 | 1 |
| 93-8571 | Key | 18 | 31 | 1 | 93-8658 | Pipe | 21 | 25 | 1 |
| 93-8572 | Fan | 18 | 32 | 1 | 93-8659 | Tube | 21 | 26 | 1 |
| 93-8582 | Grommet | 18 | 2 | 1 | 93-8660 | Asm. - Fuel Cap | 22 | 1 | 1 |
| 93-8583 | Clamp | 18 | 3 | 1 | 93-8661 | Screw | 22 | 2 | 2 |
| 93-8584 | Plug - Spark | 18 | 36 | 1 | 93-8662 | Gasket | 22 | 3 | 1 |
| 93-8585 | Cap - Spark Plug | 18 | 37 | 1 | 93-8663 | Spring | 22 | 4 | 1 |
| 93-8587 | Panel - Control | 19 | 1 | 1 | 93-8664 | Clamp | 22 | 5 | 2 |
| 93-8588 | Spring | 19 | 2 | 2 | 93-8665 | Clamp | 22 | 6 | 1 |
| 93-8589 | Bolt | 19 | 3 | 2 | 93-8666 | Tube | 22 | 7 | 1 |
| 93-8590 | Washer | 19 | 4 | 1 | 93-8668 | Washer | 22 | 9 | 1 |
| 93-8591 | Spring | 19 | 5 | 1 | 93-8669 | Asm. - Tap | 22 | 10 | 1 |
| 93-8592 | Plate | 19 | 6 | 1 | 93-8670 | Screw | 22 | 11 | 1 |
| 93-8593 | Spring | 19 | 7 | 1 | 93-8671 | Seal - O-Ring | 22 | 12 | 1 |
| 93-8594 | Spacer | 19 | 8 | 1 | 93-8673 | Gasket | 22 | 14 | 1 |
| 93-8595 | Nut | 19 | 9 | 1 | 93-8674 | Cup - Tap | 22 | 15 | 1 |
| 93-8597 | Nut | 19 | 11 | 1 | 93-8675 | Nut | 22 | 16 | 1 |
| 93-8598 | Lever | 19 | 12 | 1 | 93-8676 | Clamp | 22 | 17 | 2 |
| 93-8599 | Asm. - Control Panel | 19 | 13 | 1 | 93-8677 | Tube | 22 | 18 | 1 |
| 93-8600 | Bolt - Flanged | 19 | 14 | 2 | 93-8678 | Bracket - Tank | 22 | 19 | 1 |
| 93-8601 | Spring | 19 | 15 | 1 | 93-8680 | Bolt - Flanged | 22 | 21 | 2 |
| 93-8602 | Rod - Governor | 19 | 16 | 1 | 93-8681 | Bracket | 22 | 22 | 1 |
| 93-8603 | Arm - Governor | 19 | 17 | 1 | 93-8682 | Tank - Fuel | 22 | 23 | 1 |
| 93-8606 | Bolt | 19 | 20 | 1 | 93-8683 | Bolt | 22 | 24 | 4 |
| 93-8607 | Pin - Snap | 19 | 21 | 1 | 93-8685 | Gauge - Fuel | 22 | 26 | 1 |
| 93-8608 | Washer | 19 | 22 | 1 | 93-8686 | Screw | 22 | 27 | 2 |
| 93-8609 | Arm - Pivot | 19 | 23 | 1 | 93-8687 | Decal - Choke | 21 | 28 | 1 |
| 93-8610 | Sleeve | 19 | 24 | 1 | 93-8689 | Decal - Instruction | 18 | 34 | 1 |
| 93-8613 | Gasket - Carburetor | 20 | 1 | 3 | 93-8690 | Decal - Maintenance | 21 | 27 | 1 |
| 93-8617 | Valve - Choke | 20 | 5 | 1 | 93-8692 | Decal - Warning | 22 | 30 | 1 |
| 93-8619 | Asm. - Screw | 20 | 7 | 1 | 93-9008 | Decal - Bail (Europe) | 13 | 47 | 1 |
| 93-8624 | Gasket | 20 | 12 | 1 | 93-9009 | Bail Asm. (Europe) | 13 | 41 | 1 |
| 93-8625 | Asm. - Float Chamber | 20 | 13 | 1 | 93-9012 | Decal - Console | 13 | 31 | 1 |
| 93-8626 | Asm. - Screw | 20 | 14 | 1 | 93-9014 | Pin - Actuator, Clutch | 3 | 20 | 1 |
| 93-8627 | Bolt | 20 | 15 | 1 | 93-9015 | Bedknife - 1/8 | 5 | 18 | 1 |
| 93-8628 | Bolt - Stud | 20 | 16 | 2 | 93-9017 | Rod - Basket, RH | 2 | * | 1 |
| 93-8629 | Clamp | 20 | 17 | 1 | 93-9018 | Rod - Basket, LH | 2 | 41 | 1 |
| 93-8630 | Tube | 20 | 18 | 1 | 93-9019 | Kickstand | 1 | 23 | 1 |
| 93-8631 | Nut | 19 | 18 | 1 | 93-9024 | Cable Assembly - Link | 11 | 36 | 1 |
| 93-8631 | Nut | 20 | 19 | 2 | 93-9026 | Frame - Rear | 2 | 49 | 1 |
| 93-8632 | Bolt - Stud | 20 | 20 | 2 | 93-9029 | Reel - 8 Blade | 5 | 16 | 1 |
| 93-8633 | Pipe - Intake | 20 | 21 | 1 | 93-9032 | Frame - Front | 2 | 51 | 1 |
| 93-8634 | Asm. - Air Filter | 21 | 1 | 1 | 93-9039 | Asm. - Roller, Wiehle | 2 | 42 | 1 |
| 93-8635 | Case - Air Filter | 21 | 2 | 1 | 93-9041 | Differential | 7 | 9 | 1 |
| 93-8636 | Element - Air Filter | 21 | 3 | 1 | 93-9042 | Drum - Long | 7 | 1 | 2 |
| 93-8637 | Element - Air Filter | 21 | 4 | 1 | 93-9043 | Washer - Belleville | 1 | 14 | 32 |
| 93-8638 | Cap - Air Filter | 21 | 5 | 1 | 93-9044 | Handle | 13 | 38 | 1 |
| 93-8639 | Washer | 21 | 6 | 22 | 93-9049 | Bedbar | 5 | 1 | 1 |
| 93-8640 | Bolt | 21 | 7 | 2 | 93-9356 | Decal - Warning, Belt | 1 | 4 | 3 |
| 93-8641 | Nut | 21 | 8 | 3 | 93-9389 | Decal - Warning, Belt | 1 | 4 | 3 |
| 93-8642 | Plate - Air Filter | 21 | 9 | 1 | 93-9391 | Decal - Service (French) | 5 | 4 | 1 |
| 93-8643 | Asm. - Muffler | 21 | 10 | 1 | 93-9392 | Decal - Service (Spanish) | 5 | 4 | 1 |
| 93-8644 | Bolt | 21 | 11 | 4 | 93-9393 | Decal - Service (German) | 5 | 4 | 1 |
| 93-8645 | Washer | 21 | 12 | 4 | 93-9394 | Decal - Service (Japan) | 5 | 4 | 1 |
| 93-8646 | Cover - Muffler | 21 | 13 | 1 | 93-9886 | Decal - Fuel (Europe) | 12 | 51 | 1 |
| 93-8647 | Screw | 21 | 14 | 4 | 93-9886 | Decal - Fuel (Japan) | 12 | 51 | 1 |

*Not Illustrated

TORO PART NUMBER INDEX (Cont.)

| Part No. | Description | Pg. No. | Ref. No. | Qty. | Part No. | Description | Pg. No. | Ref. No. | Qty. |
|----------|-----------------------------|---------|----------|------|----------|------------------------------|---------|----------|------|
| 94-3431 | Module - Interlock (Europe) | 12 | 50 | 1 | 94-9041 | Seal - O-Ring | 16 | 23 | 2 |
| 94-5850 | Spindle - Drum | 7 | 2 | 1 | 94-9042 | Nut | 22 | 8 | 1 |
| 94-5852 | Hub - Drum | 7 | 6 | 1 | 94-9043 | Gear - Helical | 16 | 20 | 1 |
| 94-5853 | Channel - Adjuster | 2 | 50 | 2 | 94-9044 | Cap - Grip | 18 | 16 | 1 |
| 94-5854 | Adjuster - Frame, Bedbar | 2 | 52 | 2 | 94-9045 | Grip | 18 | 17 | 1 |
| 94-5855 | Nut - Spring | 1 | 15 | 2 | 94-9046 | Case - Recoil | 18 | 18 | 1 |
| 94-5856 | Spring - Detent | 2 | 53 | 2 | 94-9047 | Housing - Fan | 18 | 8 | 1 |
| 94-5858 | Washer | 1 | 16 | 2 | 94-9048 | Insulator | 20 | 2 | 1 |
| 94-5859 | Washer - Hardened | 1 | 13 | 2 | 94-9049 | Terminal | 18 | 38 | 1 |
| 94-5860 | Module - Interlock | 12 | 50 | 1 | 95-0907 | Bracket - Skid, Brake | 13 | 16 | 1 |
| 94-5861 | Bracket - Module | 12 | 48 | 1 | 95-0908 | Bracket - Skid, Clutch | 13 | 8 | 1 |
| 94-5862 | Harness - Wire | 11 | 24 | 1 | 95-0922 | Guide - Belt | 12 | 55 | 1 |
| 94-5865 | Harness - Wire (Europe) | 11 | 24 | 1 | 95-0923 | Flangette | 6 | 55 | 2 |
| 94-5866 | Boot - Differential | 9 | 2 | 1 | 95-0930 | Assembly - Roller | 14 | 3 | 1 |
| 94-5867 | Rod - Support, Frame | 2 | 54 | 1 | 95-5731 | Screw - Drive | 3 | 30 | 1 |
| 94-5868 | Washer | 13 | 48 | 2 | 95-5734 | Betonite Grease | 8 | * | 1 |
| 94-5869 | Cable - Throttle | 13 | 1 | 1 | 95-5737 | Seal Oil | 8 | 14 | 2 |
| 94-5870 | Cable - Clutch | 13 | 12 | 1 | 95-5738 | Bearing Needle | 8 | 13 | 4 |
| 94-5871 | Cable - Brake | 13 | 15 | 1 | 95-5739 | Screw Flanged Hex Hd. | 8 | 11 | 4 |
| 94-5872 | Shaft - Power | 3 | 34 | 1 | 95-5740 | Housing Differential Carrier | 8 | 1A | 1 |
| 94-5873 | Asm. - Screw | 2 | 55 | 2 | 95-5741 | Housing Differential Carrier | 8 | 1 | 1 |
| 94-5879 | Bar - Cutoff | 5 | 3 | 1 | 95-5742 | Axle (Short) 9.118 | 8 | 3 | 1 |
| 94-5885 | Bedknife - Tournament | 5 | * | 1 | 95-5743 | Axle (Long) 23.097 | 8 | 2 | 1 |
| 94-5893 | Basket - Grass | 7 | 19 | 1 | 95-5744 | Washer Thrust | 8 | 7 | 2 |
| 94-5894 | Channel - Basket | 7 | 18 | 1 | 95-5745 | Washer | 8 | 8 | 2 |
| 94-6313 | Decal - Console (Europe) | 13 | 31 | 1 | 95-5746 | Ring - Retaining (Pkg. of 2) | 8 | 10 | 4 |
| 94-6314 | Decal - Console (Japan) | 13 | 31 | 1 | 95-5747 | Pin Drive | 8 | 6 | 1 |
| 94-6825 | Bolt - Flanged | 22 | 20 | 4 | 95-5748 | Gear Pinion | 8 | 5 | 2 |
| 94-6826 | Filter - Fuel | 22 | 25 | 1 | 95-5749 | Gear Bevel | 8 | 4 | 2 |
| 94-6836 | Piston (Oversized) | 16 | * | 1 | 233-69 | Knob | 3 | 28 | 1 |
| 94-6837 | Piston Ring Set (Oversized) | 16 | * | 1 | 237-160 | Plug | 4 | 62 | 1 |
| 94-6838 | Bolt - Flanged | 16 | 8 | 4 | 2410-18 | Plug | 15 | 2 | 1 |
| 94-6840 | Bolt - Flanged | 18 | 33 | 3 | 2412-93 | Clamp - R | 11 | 20 | 1 |
| 94-6841 | Asm. - Governor | 19 | 25 | 1 | 2412-139 | Clamp - Hose | 9 | 1 | 1 |
| 94-6842 | Washer | 19 | 26 | 1 | 2412-140 | Clamp - Hose | 9 | 3 | 1 |
| 94-6844 | Asm. - Float | 20 | 11 | 1 | 251-204 | Bearing - Ball | 3 | 46 | 1 |
| 94-6845 | Screw | 20 | 22 | 1 | 251-257 | Bearing | 7 | 4 | 2 |
| 94-6846 | Clamp | 20 | 23 | 1 | 251-336 | Bearing - Ball | 3 | 14 | 2 |
| 94-6848 | Bolt - Stud | 21 | 20 | 2 | 251-338 | Bearing | 6 | 16 | 2 |
| 94-6849 | Filter - Tap | 22 | 13 | 1 | 251-338 | Bearing | 9 | 40 | 1 |
| 94-9003 | Engine Assembly | 11 | 23 | 1 | 251-342 | Bearing | 3 | 47 | 1 |
| 94-9004 | Plate - Side, RH | 1 | 1 | 1 | 251-342 | Bearing | 6 | 47 | 1 |
| 94-9005 | Plate - Side, LH | 2 | 33 | 1 | 251-343 | Bearing | 9 | 18 | 1 |
| 94-9007 | Cover - Bellcrank | 11 | 1 | 1 | 253-96 | Seal | 3 | 39 | 1 |
| 94-9009 | Asm. - Grass Shield | 5 | 8 | 1 | 253-96 | Seal | 6 | 50 | 1 |
| 94-9011 | Bar | 15 | 1 | 1 | 253-118 | Seal | 3 | 36 | 1 |
| 94-9015 | Screw - Cap Hex. Hd. | 12 | 54 | 1 | 253-159 | Seal - Spring Lip | 7 | 3 | 2 |
| 94-9015 | Screw - HH | 19 | 10 | 1 | 253-160 | Seal | 6 | 15 | 4 |
| 94-9016 | Pulley - RH | 6 | * | 1 | 253-160 | Seal | 9 | 39 | 2 |
| 94-9017 | Pulley - LH | 6 | 44 | 1 | 253-161 | Seal - V-Ring | 6 | 20 | 2 |
| 94-9018 | Washer | 6 | 21 | 2 | 253-163 | Seal | 6 | 43 | 1 |
| 94-9026 | Flywheel | 18 | 30 | 1 | 253-163 | Seal | 4 | 50 | 1 |
| 94-9027 | Decal - Recoil | 18 | 22 | 1 | 256-206 | Bushing | 13 | 39 | 2 |
| 94-9028 | Decal - Model | 22 | 28 | 1 | 283-75 | Pin - Clevis | 9 | 27 | 1 |
| 94-9030 | Spring - Governor | 19 | 19 | 1 | 302-5 | Fitting - Grease | 2 | 43 | 2 |
| 94-9031 | Coil - Ignition | 18 | 35 | 1 | 302-5 | Fitting - Grease | 14 | 2 | 2 |
| 94-9032 | Asm. - Carburetor | 20 | 3 | 1 | 302-5 | Fitting - Grease | 11 | 8 | 2 |
| 94-9033 | Valve - Throttle | 20 | 4 | 1 | 302-5 | Fitting - Grease | 3 | 32 | 2 |
| 94-9035 | Nozzle - Main | 20 | 9 | 1 | 302-5 | Fitting - Grease | 6 | 49 | 1 |
| 94-9036 | Jet - Main #65 | 20 | 10 | 1 | 302-19 | Fitting - Grease | 6 | 6 | 2 |
| 94-9037 | Jet - Pilot #40 | 20 | 6 | 1 | 302-40 | Fitting - Grease 90° | 6 | 53 | 2 |
| 94-9038 | Lead - Wire | 18 | 5 | 1 | 302-55 | Fitting - Grease | 9 | 20 | 1 |
| 94-9039 | Clamp | 18 | 1 | 1 | 302-64 | Fitting - Grease | 9 | 38 | 1 |
| 94-9040 | Tube | 18 | 39 | 1 | 321-2 | Screw - HH | 9 | 4 | 3 |

*Not Illustrated

TORO PART NUMBER INDEX (Cont.)

| Part No. | Description | Pg. Ref. | | Part No. | Description | Pg. Ref. | |
|----------|---------------------------|----------|-------|-----------|-------------------------|----------|------|
| | | No. | Qty. | | | No. | Qty. |
| 321-3 | Screw - Cap Hex. Hd. | 12 | 49 1 | 3256-2 | Washer - Flat | 11 | 2 1 |
| 321-3 | Screw - HH | 5 | 10 4 | 3256-22 | Washer - Flat | 5 | 7 6 |
| 321-3 | Screw - HH | 9 | 15 2 | 3256-22 | Washer - Flat | 9 | 14 2 |
| 321-4 | Screw - HH | 3 | 25 1 | 3256-22 | Washer - Flat | 12 | 53 1 |
| 321-8 | Screw - HH | 13 | 9 1 | 3256-23 | Washer - Flat | 7 | 11 4 |
| 321-11 | Screw - HH | 6 | 37 8 | 3256-23 | Washer - Flat | 13 | 23 2 |
| 321-20 | Screw - HH | 3 | 1 3 | 3256-24 | Washer - Flat | 1 | 25 6 |
| 321-23 | Screw - HH | 4 | 63 1 | 3256-24 | Washer - Flat | 13 | 35 2 |
| 322-2 | Screw - HH | 2 | 45 4 | 3256-24 | Washer - Flat | 9 | 41 4 |
| 322-3 | Screw - HH | 6 | 4 8 | 3256-56 | Washer - Flat | 11 | 7 10 |
| 322-3 | Screw - HH | 3 | 5 1 | 3257-32 | Key - Woodruff | 7 | 13 2 |
| 322-3 | Screw - HH | 9 | 8 1 | 3257-32 | Key - Woodruff | 9 | 32 1 |
| 322-5 | Screw - HH | 6 | 7 4 | 3257-32 | Key - Woodruff | 3 | 37 1 |
| 322-5 | Screw - HH | 1 | 8 2 | 3272-6 | Pin - Cotter | 9 | 28 2 |
| 322-5 | Screw - HH | 7 | 15 8 | 3272-8 | Pin - Cotter | 9 | 31 1 |
| 322-5 | Screw - HH | 9 | 26 4 | 3289-23 | Screw - Flat Head | 4 | 55 2 |
| 322-5 | Screw - HH | 3 | 38 3 | 3290-378 | Tie - Cable | 13 | 40 2 |
| 322-9 | Screw - Cap Hex. Hd. | 11 | 25 4 | 3290-409 | Rivet | 7 | 17 9 |
| 322-9 | Screw - HH | 13 | 7 4 | 3290-414 | Washer - Belleville | 3 | 23 1 |
| 322-9 | Screw - HH | 7 | 20 8 | 3290-467 | Pin - Cotter, Hair | 2 | 30 2 |
| 322-9 | Screw - HH | 2 | 32 2 | 3290-485 | Washer - Wave | 3 | 42 1 |
| 322-10 | Screw - HH | 1 | 11 1 | 3296-28 | Nut - Lock | 13 | 37 2 |
| 323-4 | Screw - Cap Hex. Hd. | 11 | 5 2 | 3296-29 | Nut - Lock | 6 | 3 4 |
| 323-4 | Screw - HH | 1 | 3 10 | 3296-29 | Nut - Lock | 7 | 12 4 |
| 323-5 | Screw - HH | 1 | 24 6 | 3296-29 | Nut - Lock | 1 | 20 4 |
| 323-5 | Screw - HH | 9 | 43 4 | 3296-29 | Nut - Lock | 13 | 26 4 |
| 323-6 | Screw - HH | 1 | 7 2 | 3296-29 | Nut - Lock | 11 | 30 4 |
| 323-7 | Screw - HH | 6 | 39 2 | 3296-29 | Nut - Lock | 3 | 43 2 |
| 323-11 | Screw - Cap Hex. Hd. | 11 | 34 1 | 3296-33 | Nut - Lock | 7 | 8 1 |
| 323-34 | Screw - HH | 13 | 33 2 | 3296-39 | Nut - Lock | 6 | 1 2 |
| 3210-7 | Screw - HH | 13 | 21 2 | 3296-39 | Nut - Lock | 2 | 37 2 |
| 3218-2 | Nut - Hex. Jam | 9 | 23 3 | 3296-39 | Nut - Lock | 3 | 40 2 |
| 3218-2 | Nut - Hex. Jam | 2 | 36 2 | 3296-39 | Nut - Lock | 12 | 46 1 |
| 3218-20 | Nut - Hex. Jam (Europe) | 13 | 45 2 | 3296-42 | Nut - Lock | 5 | 6 4 |
| 3218-20 | Nut - Jam | 11 | 15 2 | 3296-42 | Nut - Lock | 13 | 11 2 |
| 3220-5 | Nut - Hex. Jam | 3 | 10 1 | 3296-42 | Nut - Lock | 3 | 22 1 |
| 3231-5 | Screw - Carriage | 2 | 46 2 | 3296-42 | Nut - Lock | 9 | 24 1 |
| 3242-4 | Screw - Set | 2 | 35 2 | 3296-42 | Nut - Lock | 11 | 41 4 |
| 3253-3 | Washer - Lock | 9 | 5 5 | 3296-48 | Nut - Lock | 1 | 21 2 |
| 3253-3 | Washer - Lock | 3 | 24 1 | 3296-56 | Nut - Lock | 13 | 3 1 |
| 3253-4 | Washer - Lock | 6 | 5 10 | 3296-57 | Nut - Lock | 6 | 19 2 |
| 3253-4 | Washer - Lock | 3 | 9 2 | 3296-57 | Nut - Lock | 9 | 33 1 |
| 3253-4 | Washer - Lock | 9 | 9 7 | 32103-2 | Nut - Wing | 15 | 3 1 |
| 3253-4 | Washer - Lock | 7 | 16 16 | 32120-11 | Ring - Retaining | 3 | 19 1 |
| 3253-4 | Washer - Lock | 13 | 22 2 | 32120-42 | Ring - Retaining | 3 | 8 1 |
| 3253-4 | Washer - Spring Lock | 11 | 37 7 | 32120-42 | Ring - Retaining | 6 | 9 2 |
| 3253-21 | Washer - Lock | 1 | 5 16 | 32120-42 | Ring - Retaining | 12 | 45 1 |
| 3253-21 | Washer - Lock | 13 | 34 2 | 32120-42 | Ring - Retaining | 9 | 48 1 |
| 3253-21 | Washer - Lock | 9 | 42 4 | 32122-36 | Screw - Truss Hd. | 15 | 2 1 |
| 3253-21 | Washer - Spring Lock | 11 | 6 2 | 32128-25 | Nut - Flange | 1 | 18 1 |
| 3254-4 | Washer - Lock, Int. Tooth | 3 | 11 1 | 32128-48 | Nut - Flange | 5 | 14 2 |
| 3254-6 | Washer - Lock, Int. Tooth | 1 | 2 2 | 32144-73 | Screw - HWHTF | 5 | 9 6 |
| 3254-6 | Washer - Lock, Int. Tooth | 9 | 44 2 | 32144-73 | Screw - Hex. Washer Hd. | 11 | 29 1 |
| 3254-8 | Washer - Lock, Int. Tooth | 3 | 2 4 | 32148-6 | Insert - Threaded | 2 | 58 9 |
| 3254-8 | Washer - Lock, Int. Tooth | 6 | 38 8 | 32151-89 | Ring - Retaining | 3 | 13 1 |
| 3255-8 | Washer - Lock | 2 | 44 4 | 32151-92 | Ring - Retaining | 4 | 49 1 |
| 3255-9 | Washer - External Lock | 11 | 21 2 | 32151-95 | Ring - Retaining | 3 | 12 2 |
| 3256-2 | Washer - Flat | 1 | 19 3 | 33113-012 | Screw - HH (Europe) | 12 | 52 4 |

*Not Illustrated

PRODUCT CHANGES

In an effort to make improvements available to TORO owners as quickly as possible, minor changes are incorporated into Toro's products from time to time that do not become immediately shown in the Parts Catalog. If such a change has been made in your unit, which is not reflected in your manual, see your TORO Distributor or his Authorized TORO Service Dealer for information and part numbers.

IDENTIFICATION AND ORDERING

MODEL AND SERIAL NUMBERS

The Greensmaster 1600 has two identification numbers; a model number and a serial number. The two numbers are stamped on a plate which is located on the rear frame cross channel. In any correspondence concerning the Greensmaster 1600, supply model and serial numbers to assure that correct information and replacement parts are obtained.

To order replacement parts from an Authorized TORO Service Dealer, supply the following information:

1. Model and serial number of the Greensmaster 1600.
2. Part number, description, and the quantity of part(s) desired.

NOTE: Do not order by reference number if a parts catalog is being used; use the PART NUMBER.

TABLE OF CONTENTS

| Description | Page | Description | Page |
|-----------------------------------|-------|--|-------|
| Frame Assembly | 1—2 | Full Roller Assembly | 14 |
| Reel Drive Assembly | 3—4 | Special Tools | 15 |
| Reel Assembly | 5 | Engine Crankcase Assembly | 16 |
| Drum Drive Assembly | 6 | Engine Camshaft & Valves Assembly | 17 |
| Drum & Basket Assembly | 7 | Engine Ignition Assembly | 18 |
| Differential Assembly | | Engine Governor Assembly | 19 |
| Peerless Model No. 100—116 | 8 | Engine Carburetor Assembly | 20 |
| Countershaft Assembly | 9—10 | Engine Air Filter & Muffler Assembly | 21 |
| Engine & Bellcrank Assembly | 11—12 | Engine Fuel Tank Assembly | 22 |
| Handle Assembly | 13 | TORO Part Number Index | 23—27 |

Japanese parts kit number 94—5895 contains all of the individual parts on the preceding pages designated as (Japan).

European parts kit number 93—6901 contains all of the individual parts on the preceding pages designated as (Europe).