



Count on it.

Parts Catalog

60in Side Discharge Mower
Groundsmaster® 3320/3280-D Traction Unit
Model No. 30366—Serial No. 312000001 and Up

Ordering Replacement Parts

To order replacement parts, please supply the part number, the quantity, and the description of each part desired.

Understanding Reference Numbers

Each identified part in an illustration has a reference number. The reference number for a part also appears in the parts list, along with other information about the part.

This catalog uses two special reference number formats, one to indicate parts in a service assembly and another to indicate the quantity of a given part in an illustration.

Service Assembly Reference Numbers

Parts in service assemblies have reference numbers in the form a:b. The a represents the reference number of the entire service assembly and the b represents a sequential number unique to each part within the service assembly.

For example, a wheel assembly might be identified by reference number 6, the tire by 6:1, the valve by 6:2, and the wheel by 6:3. When you order the assembly identified by reference number 6, you receive all parts identified by reference numbers 6:1, 6:2, and 6:3. However, you may also order any part individually. Reference numbers of this type appear in illustration and in parts lists.

Reference Numbers Indicating Quantity

In an illustration, if a reference number indicates more than one part, the reference number has the form nX y. The n represents the quantity of the part, the X is the multiplication symbol, and the y represents the reference number.

For example, in an illustration, the reference number 2X 37 means that two of the parts identified by reference number 37 are indicated.

List of Abbreviations

AR: as required

ASM: assembly

BBC: blade brake control

BHTF: button head thread forming

CARR: carriage

CCW: counter clockwise

CW: clockwise

DEG: degrees

DPA: Dual Point Adjustment

ECM: electronic control module

EXT: external

FH: flat head

GA: gauge

HD: heavy-duty

HF: hex flange

HH: hex head

HHF: hex head flange

HHFTF: hex head flange thread forming

HJ: hex jam

HLH: hex lag head

HOC: height-of-cut

HSBH: hex socket button head

HSFH: hex socket flat head

HSH: hex socket head

HWH: hex washer head

HWHTF: hex washer head thread forming

HYD: hydraulic

LH: left hand

LP: Liquid Propane

NI: nylon insert

NPTF: national pipe thread fine

PFH: phillips flat head

PPH: phillips pan head

PPHTF: phillips pan head thread forming

PRH: phillips round head

PTH: phillips truss head

PTO: power-take-off

RH: right hand

ROPS: roll-over protection system

RRB: rear roller brush

SFH: slotted fillister head

SHH: slotted hex head

SHWH: slotted hex washer head

SPH: slotted pan head

SQH: square head

SRH: slotted round head

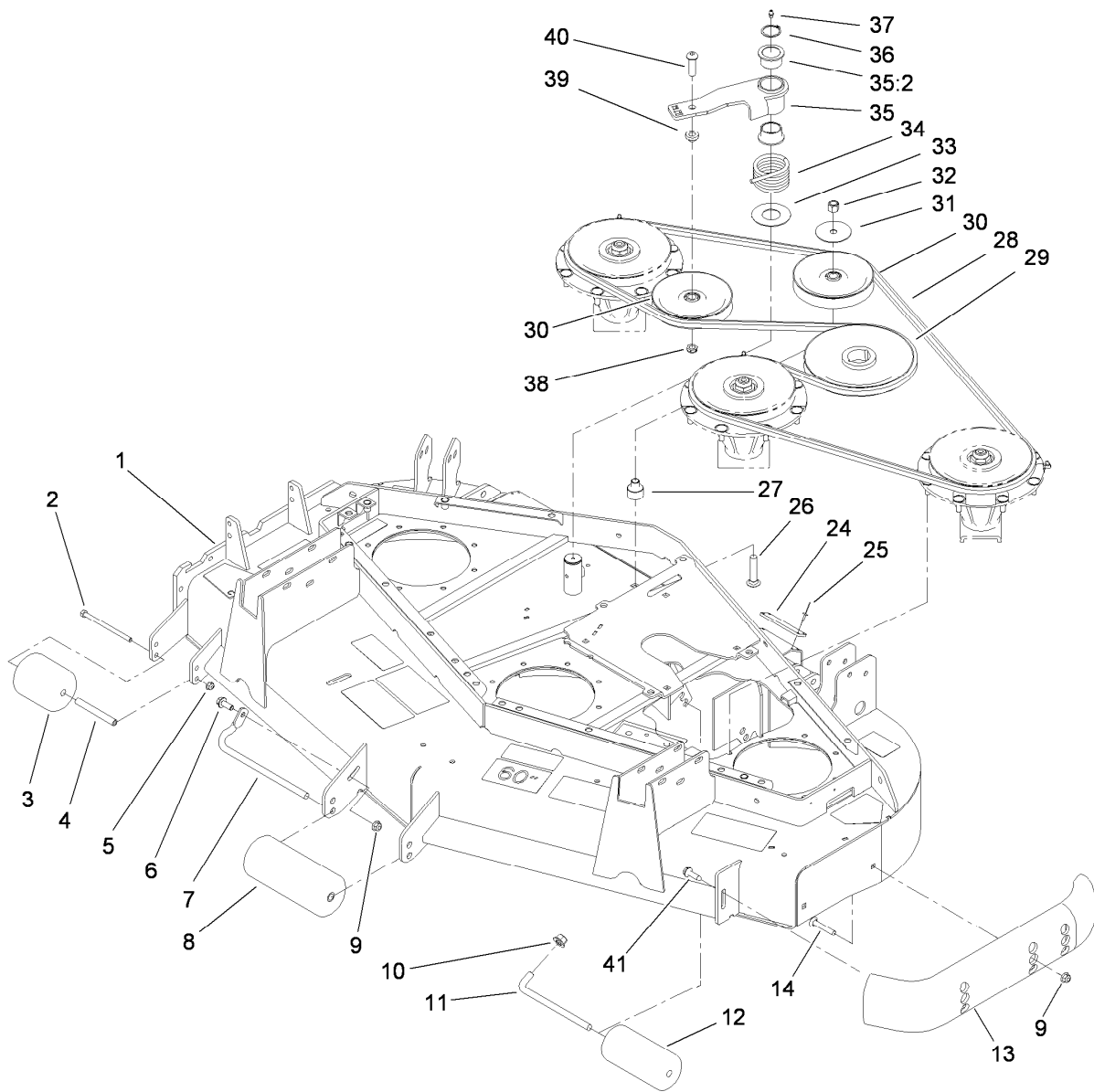
STD: standard

TAP: self tapping

TTH: torx truss head

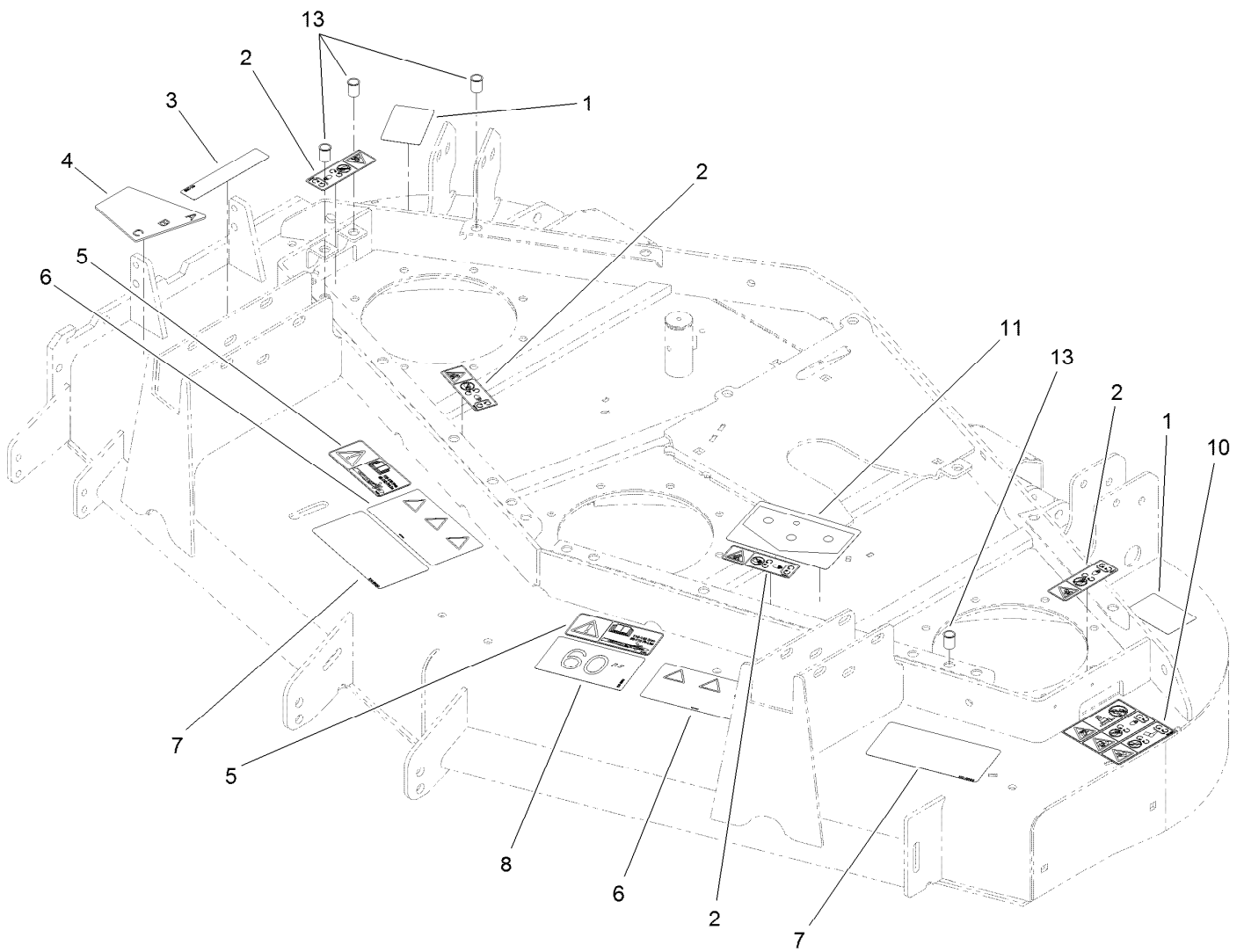
Contents

Deck, Roller, Belt and Pulley Assembly	4
Deck Assembly No. 107-7271	5
Caster Arm Assembly	6
Spindle and Blade Assembly	7
Spindle Assembly No. 119-4778	8
Cover, Gearbox and Baffle Assembly	9
Rubber Deflector Assembly No. 108-2792	10
Lever Assembly No. 107-1664	11
Gear Box Assembly No. 108-1370	12
Drive Shaft Assembly No. 110-4704	13
Lift Arm and Rear Height-of-Cut Assembly	14
Left Hand Lift Arm Assembly No. 117-0803	15
Right Hand Lift Arm Assembly No. 117-0800	16
Attachments and Accessories	17



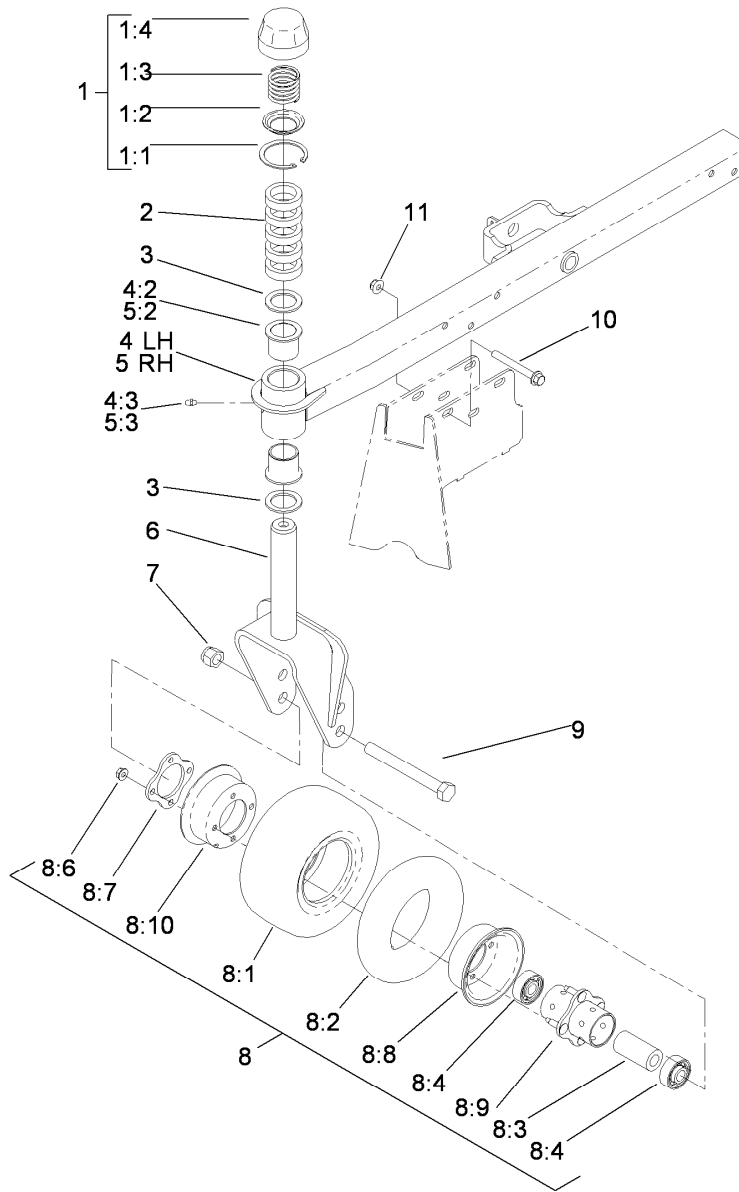
Deck, Roller, Belt and Pulley Assembly

Ref.	Part Number	Qty.	Description	Ref.	Part Number	Qty.	Description
1	107-7271	1	Deck ASM	27	108-1908	1	Spacer-Idler
2	322-29	1	Screw-HH	28	108-4391	1	Belt-Hex
3	93-4803	1	Roller-Deck	29	108-1950	1	Pulley
4	105-4549	1	Spacer-Roller	30	01-268-0160	2	Pulley-Idler
5	104-8300	1	Nut-Flange, NI	31	100-3102	1	Washer-Flat
6	3234-42	1	Screw-HHF	32	3296-23	1	Nut-Lock, NI
7	68-6840	1	Shaft-Roller	33	108-1926	1	Washer
8	68-6710	1	Roller	34	108-1921	1	Spring-Torsion
9	104-8301	3	Nut-Flange, NI	35	108-1930	1	Idler Arm ASM
10	99-5107	2	Nut-Lock	35:2	93-4510	2	Bushing-Caster
11	110-9683	2	Shaft-Rear Roller	36	32120-84	1	Ring-Snap, External
12	36-1740	2	Roller-Deck	37	302-5	1	Fitting-Grease
13	112-1479	1	Skid-Bumper, Deck	38	3296-45	1	Nut-Lock, NI
14	3231-33	2	Screw-CARR	39	108-1924	1	Spacer-Idler
24	108-1914	2	Pad-Bumper	40	108-1993	1	Screw-HSBH
25	3269-24	8	Rivet	41	9136144	1	Screw-HWHTF
26	3233-34	1	Screw-CARR				



Deck Assembly No. 107-7271

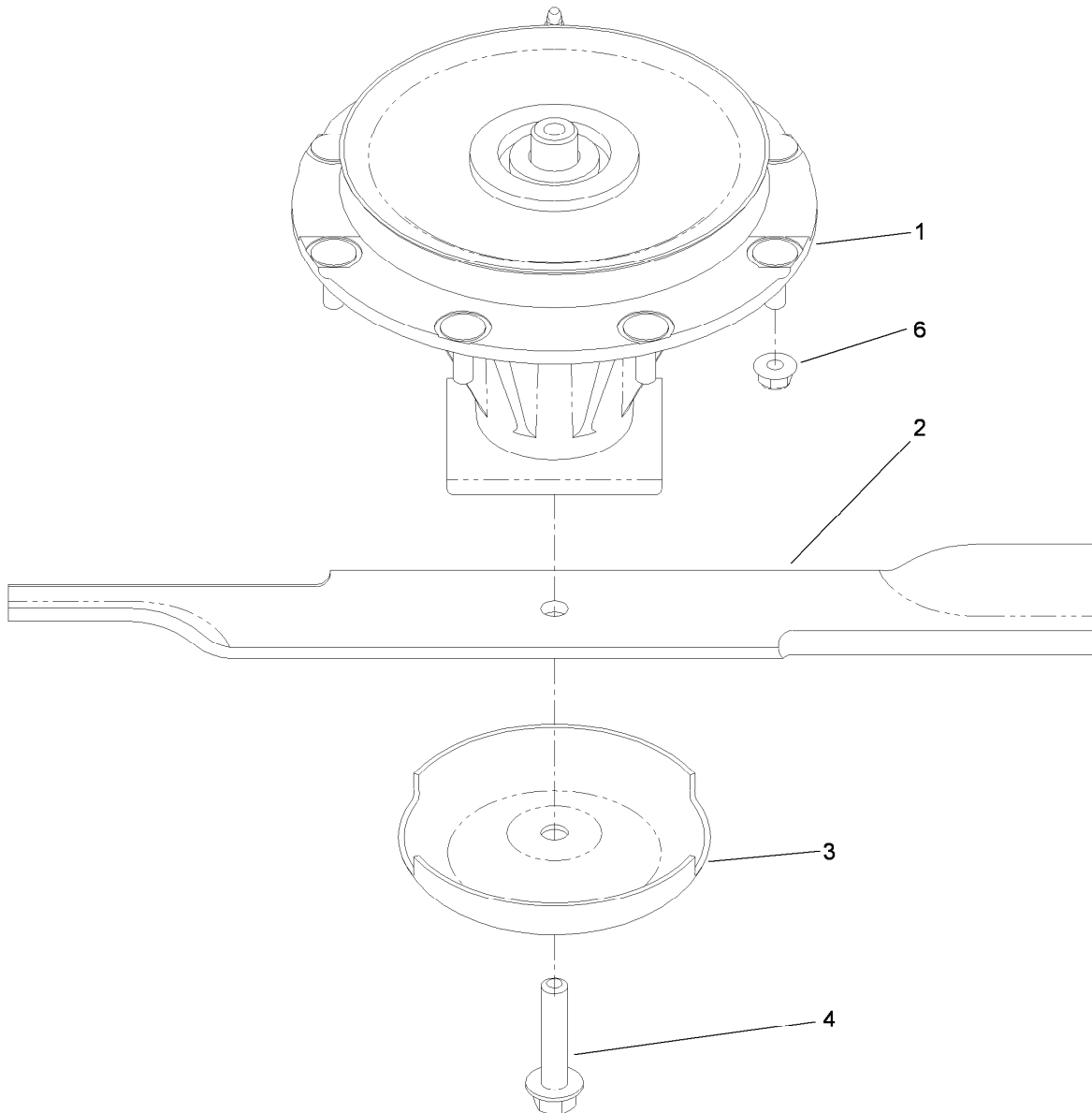
Ref.	Part Number	Qty.	Description
1	108-1986	2	Decal-HOC, Rear
2	117-4979	4	Decal-Warning, Shields (Ce)
3	107-2916	1	Decal-Warning
4	107-1622	1	Decal-Adjustment, Baffle
5	93-7818	2	Decal-Torque, Blade Bolt
6	107-2908	2	Decal-Danger, Combination
7	100-5622	2	Decal-HOC
8	108-1990	1	Decal
10	120-6604	1	Decal-Danger
11	108-1988	1	Decal-Routing, Belt
13	32148-9	4	Insert-Nut



Caster Arm Assembly

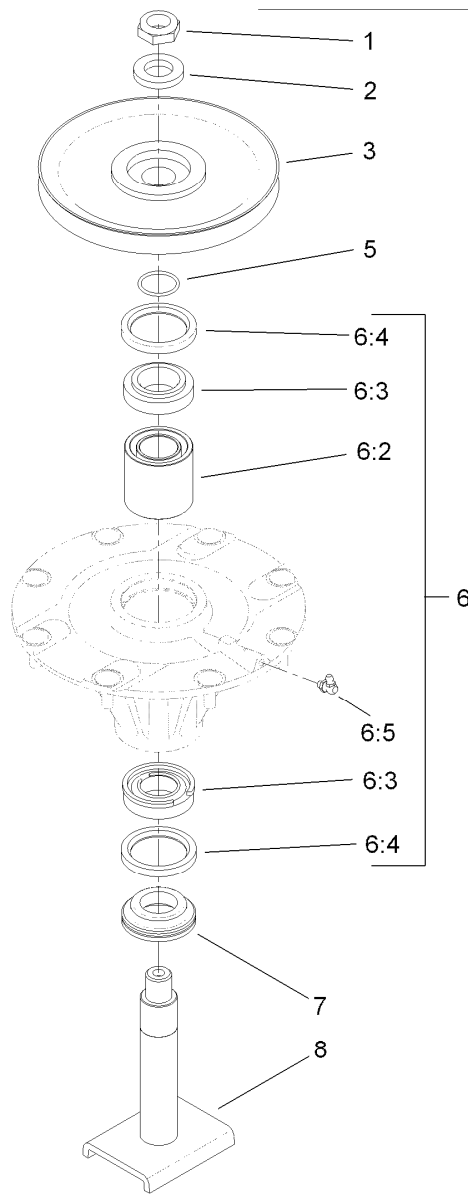
Ref.	Part Number	Qty.	Description
1	92-9727	2	HOC Cap ASM
1:1	92-5581	1	Ring-Retaining
1:2	92-5583	1	Washer-Cap
1:3	92-9726	1	Spring-Compression
1:4	92-8861	1	Cap-HOC
2	69-1510	10	Spacer-Caster
3	69-6860	4	Washer-Thrust
4	108-5744	1	LH Caster Arm ASM
4:2	69-6470	2	Bushing-Castor
4:3	302-5	1	Fitting-Grease
5	108-5745	1	RH Caster Arm ASM
5:2	69-6470	2	Bushing-Castor
5:3	302-5	1	Fitting-Grease
6	104-0762-01	2	Caster Fork ASM

Ref.	Part Number	Qty.	Description
7	3296-53	2	Nut-Lock, NI
8	93-9938	2	8 Inch Wheel ASM
8:1	93-9939	1	Tire
8:2	68-8950	1	Tube-Inner (W/Valve)
8:3	93-4241	1	Spacer-Bearing, Inner
8:4	120-3366	2	Bearing
8:6	32128-16	4	Nut-HHF
8:7	93-4242	1	Plate
8:8	93-4239	1	Rim-Wheel, Half
8:9	93-5980	1	Hub
8:10	95-2741	1	Rim-Wheel, Half
9	327-24	2	Screw-HH
10	3234-41	10	Screw-HHF
11	104-8301	10	Nut-Flange, NI



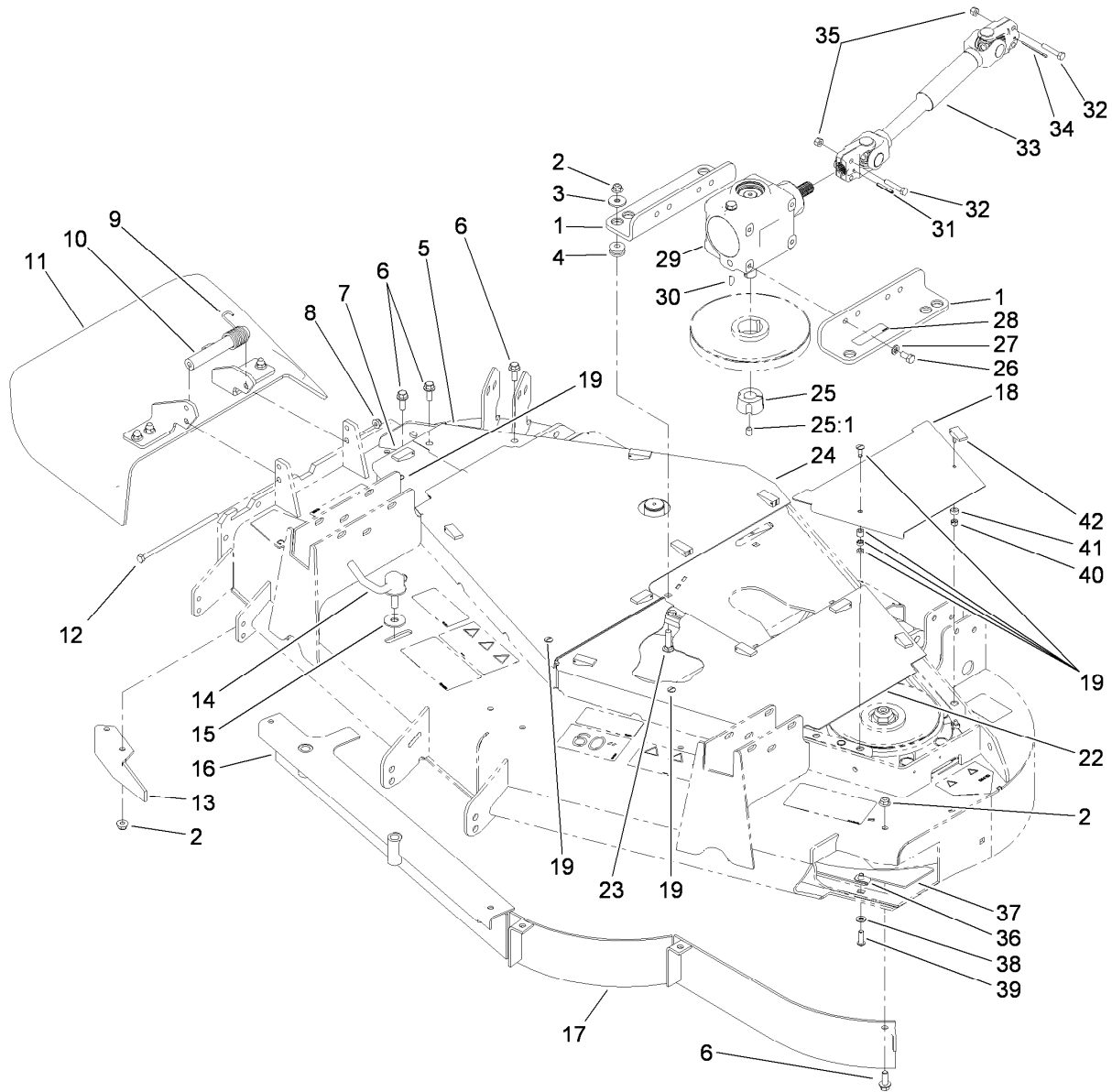
Spindle and Blade Assembly

<i>Ref.</i>	<i>Part Number</i>	<i>Qty.</i>	<i>Description</i>
1	119-4778	3	Spindle ASM
2	110-4701-03	3	Blade-Rotary, Standard (20.5)
3	72-9361	3	Cup-Scalp, Anti
4	92-5816	3	Bolt-Blade
6	104-8301	24	Nut-Flange, NI



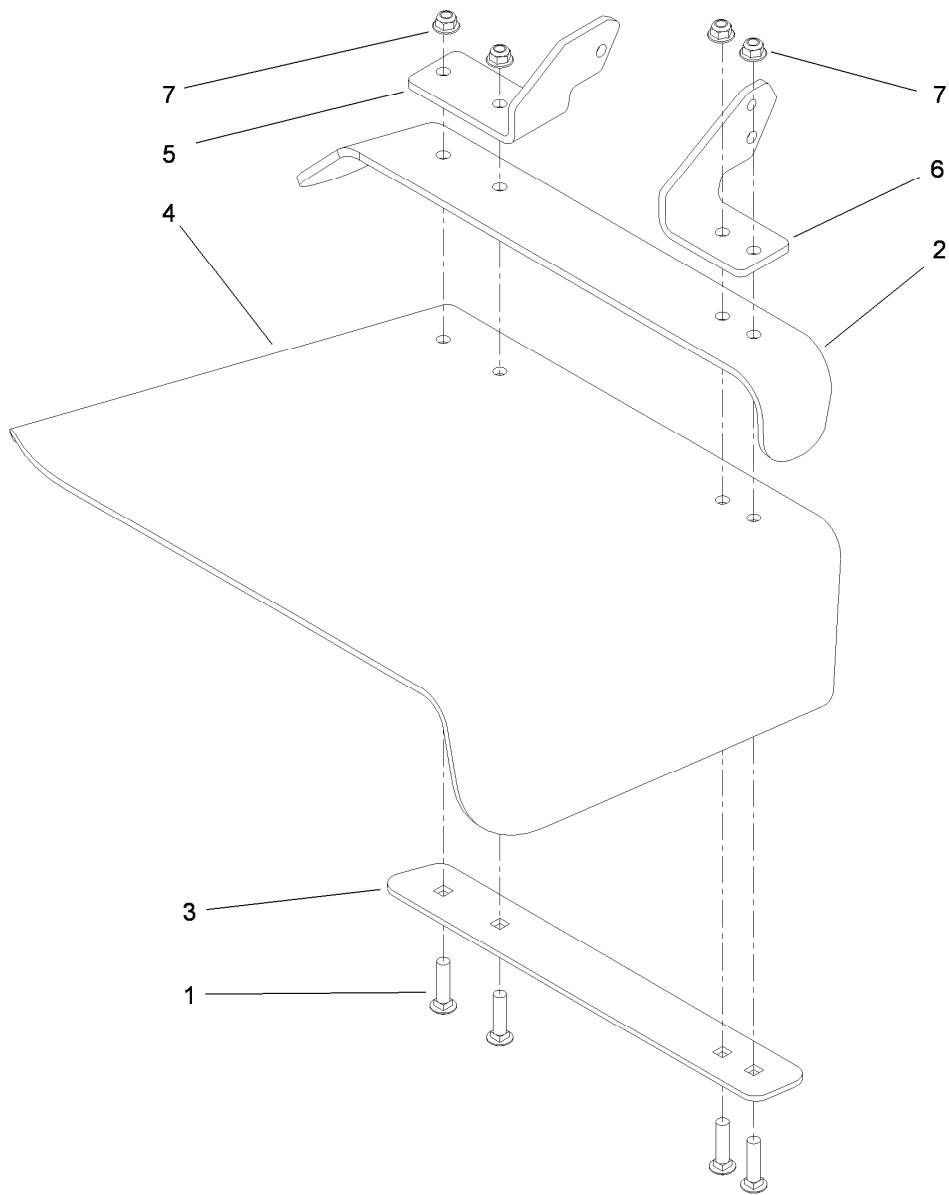
Spindle Assembly No. 119-4778

<i>Ref.</i>	<i>Part Number</i>	<i>Qty.</i>	<i>Description</i>
1	3296-60	1	Nut-Lock, NI
2	104-8322	1	Washer-Hardened
3	104-3546	1	Pulley-Driven, Low
5	106-7159	1	O-Ring
6	119-4777	1	Spindle ASM
6:2	108-1954	1	Spacer Set-Bearing
6:3	110-8297	1	Bearing ASM
6:4	253-154	2	Seal-Oil
6:5	302-60	1	Fitting-Grease
7	69-6950	1	Spacer-Shaft, Spindle
8	108-1956	1	Shaft ASM



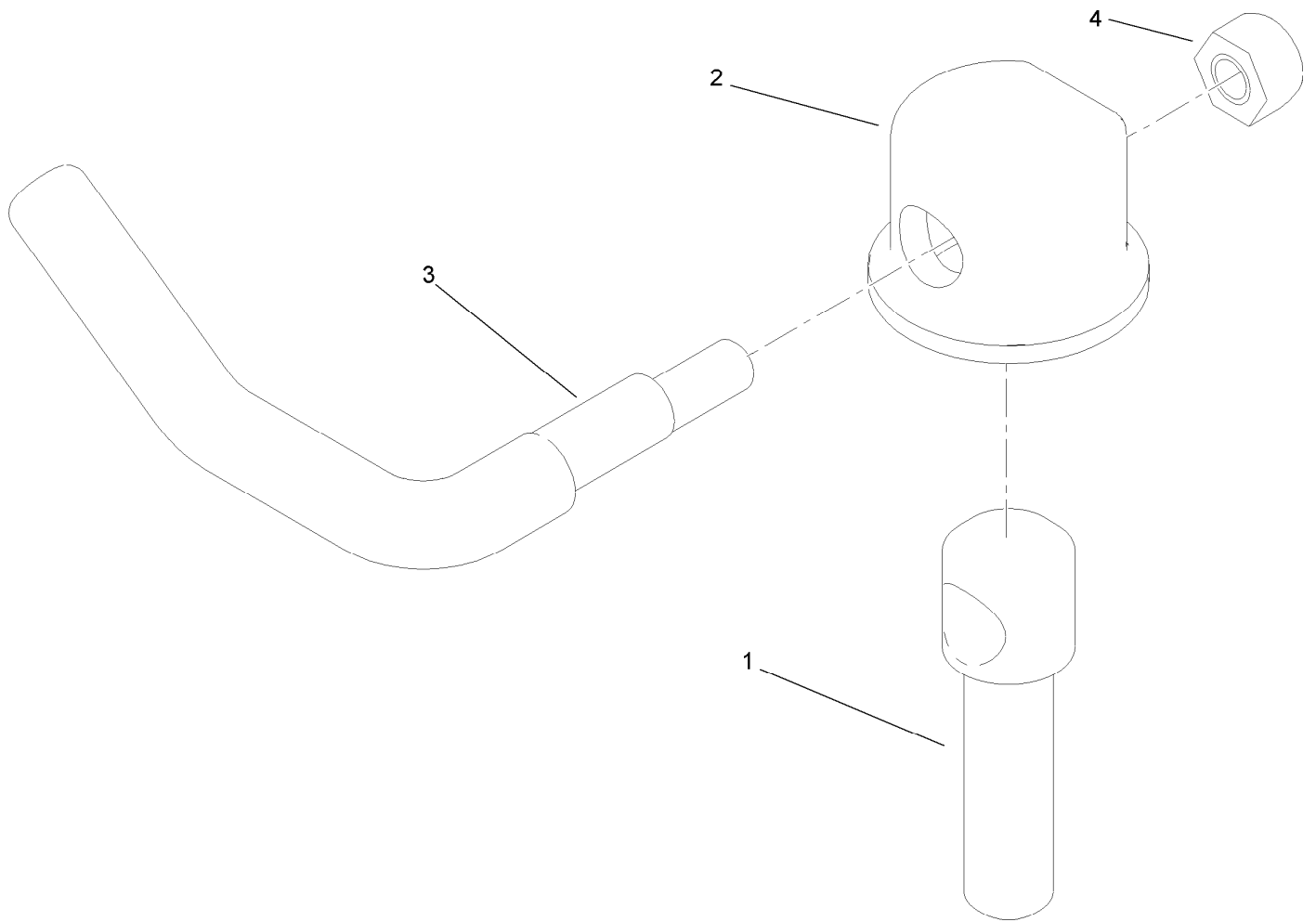
Cover, Gearbox and Baffle Assembly

Ref.	Part Number	Qty.	Description	Ref.	Part Number	Qty.	Description
1	108-4376-03	2	Bracket-Gearbox	23	3231-26	4	Screw-CARR
2	104-8301	10	Nut-Flange, NI	24	119-4797-03	1	Cover-Middle, RH
3	63-8410	4	Washer	25	23-1640	1	Bushing-Taperlock
4	63-9750	4	Mount	25:1	3247-4	2	Screw-Set
5	108-6064-03	1	Cover-Outside, Rear (RH)	26	323-4	4	Screw-HH
6	3234-42	8	Screw-HHF	27	3253-21	4	Washer-Lock
7	119-4798-03	1	Cover-Front Outside, RH	28	93-6697	1	Decal-Lube
8	104-8300	1	Nut-Flange, NI	29	108-1370	1	Gearbox Replacement Kit
9	108-4052	1	Spring-Torsion	30	3257-5	1	Key-Woodruff
10	105-4622	1	Spacer	31	32121-34	1	Pin-Roll
11	108-2792	1	Rubber Deflector ASM	32	322-9	4	Screw-HH
12	112-9557	1	Screw-HH	33	110-4704	1	PTO Drive Shaft ASM
13	106-3216-01	1	Baffle-Discharge	34	3272-15	1	Pin-Cotter
14	107-1664	2	Lever ASM	35	3296-29	4	Nut-Lock, NI
15	105-7697	2	Washer-Plastic	36	112-3306	2	Nut
16	105-7669-01	1	Baffle ASM	37	115-1421	1	Plate-Turbo
17	105-7657-01	1	Baffle ASM	38	3256-23	2	Washer-Flat
18	119-4795-03	1	Cover-Outside, LH	39	3274-104	2	Screw-HSBH
19	117-6989	4	Fractional Turn Oval Head Stud ASM	40	1-804254	12	Nut-Lock, HH
22	119-4796-03	1	Cover-Middle, LH	41	106-6778	12	Bushing-Latch, Swell
				42	106-6777	12	Handle-Latch, Swell



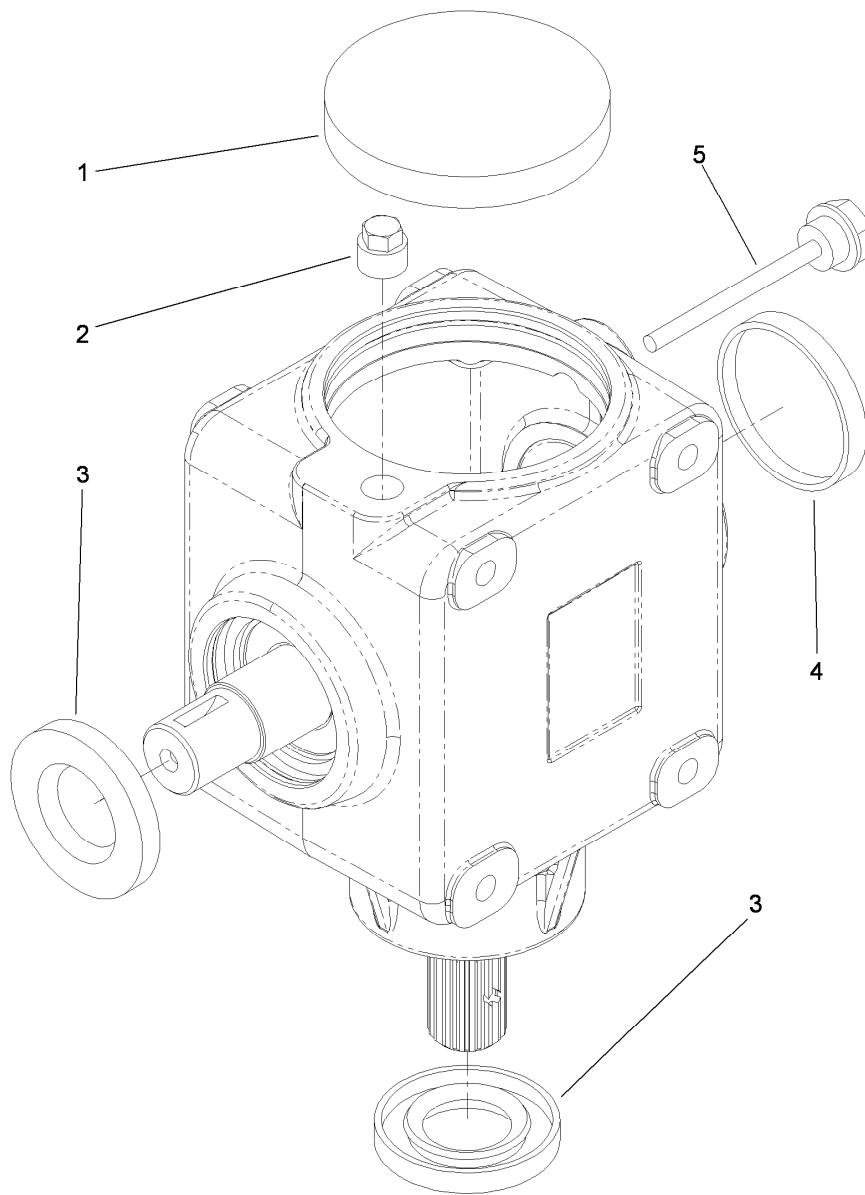
Rubber Deflector Assembly No. 108-2792

<i>Ref.</i>	<i>Part Number</i>	<i>Qty.</i>	<i>Description</i>
1	3231-4	4	Screw-CARR
2	106-3246-01	1	Deflector
3	106-3248-03	1	Strap-Discharge
4	108-5029	1	Deflector-Rubber
5	108-4059-01	1	Plate-Hinge, Rear
6	106-3253-01	1	Plate-Hinge, Front
7	104-8301	4	Nut-Flange, NI



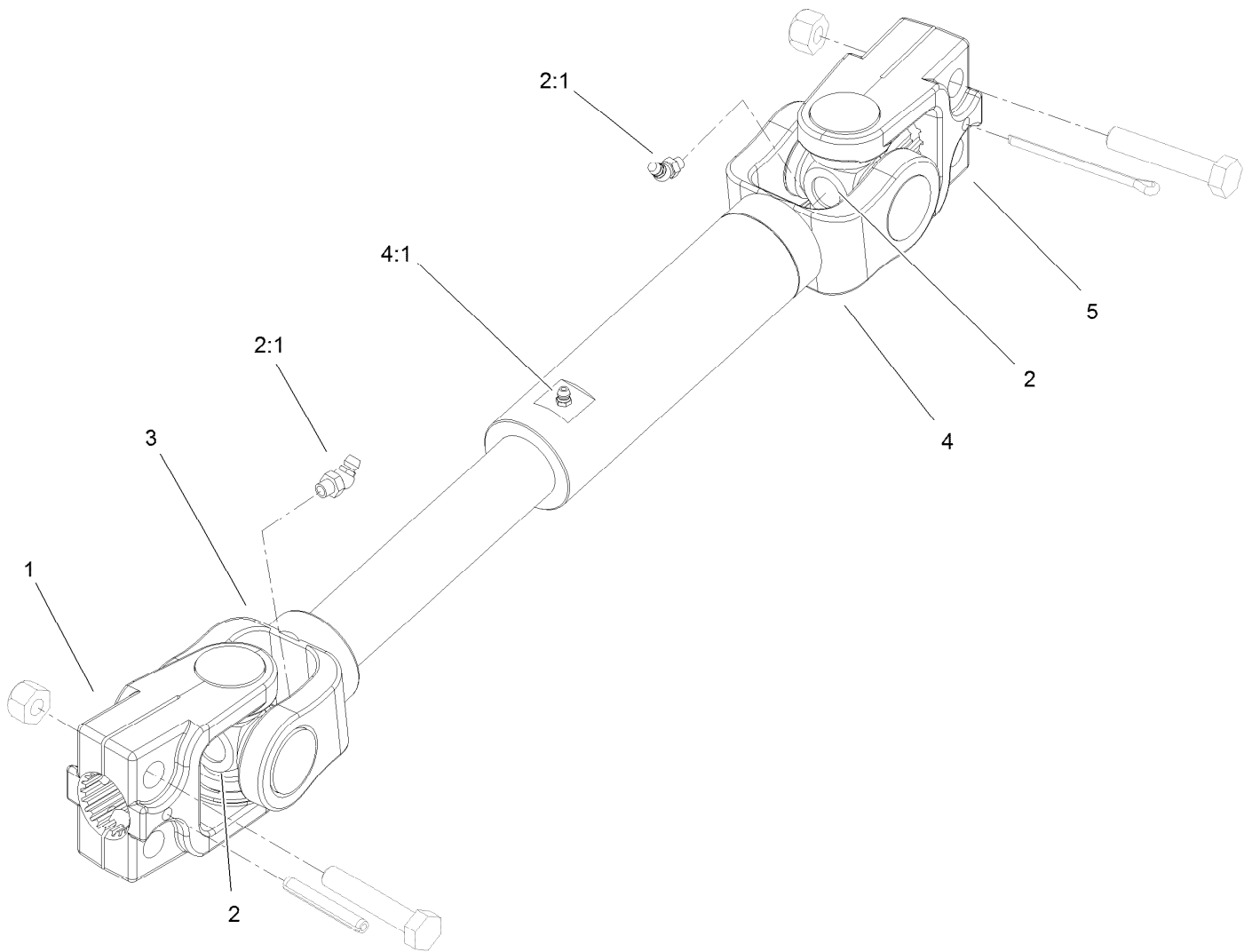
Lever Assembly No. 107-1664

<i>Ref.</i>	<i>Part Number</i>	<i>Qty.</i>	<i>Description</i>
1	106-3239	1	Screw-Lock
2	107-1644	1	Cap-Lock
3	106-3241	1	Lever-Lock
4	3296-29	1	Nut-Lock, NI



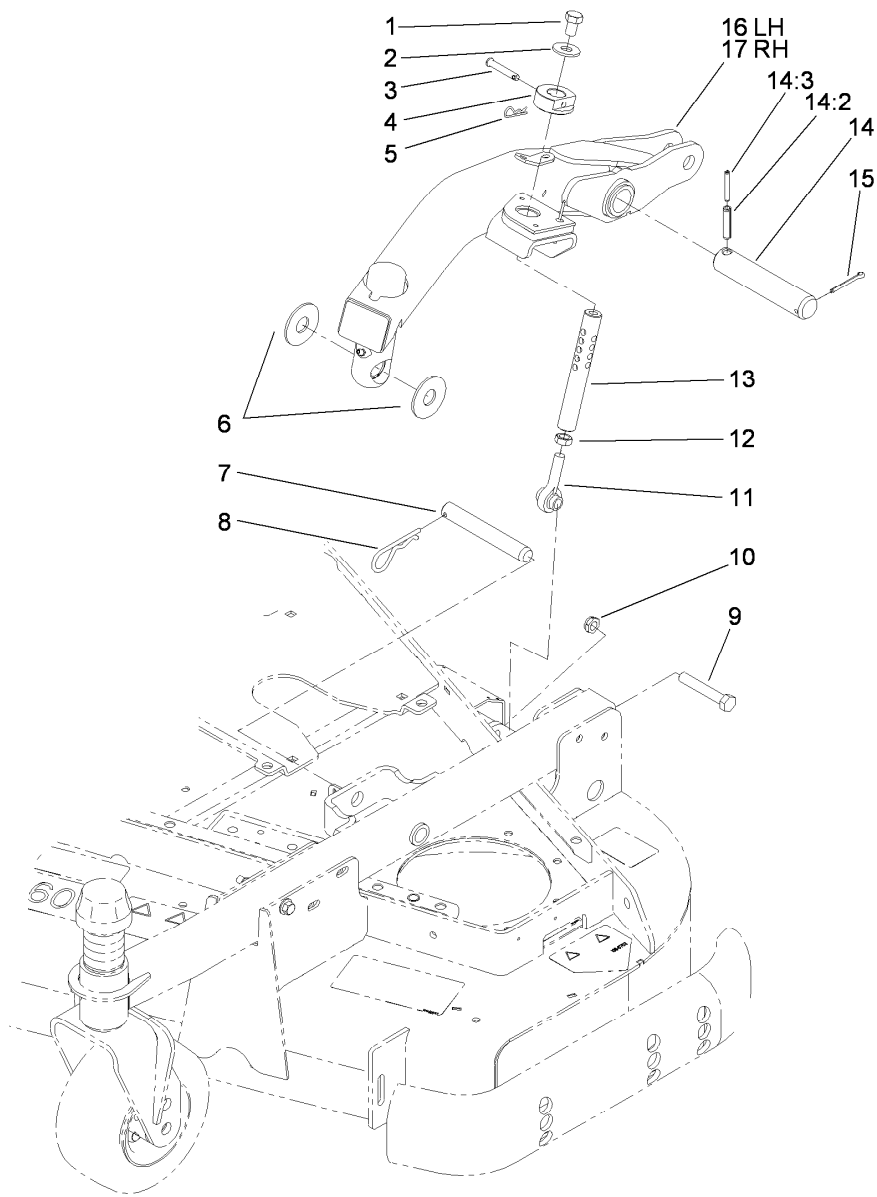
Gear Box Assembly No. 108-1370

<i>Ref.</i>	<i>Part Number</i>	<i>Qty.</i>	<i>Description</i>
1	107-2932	1	Cap-Oil
2	107-2933	1	Plug
3	117-9247	2	Seal
4	107-2935	1	Cap-Oil
5	107-2936	1	Plug-Filler, Dipstick



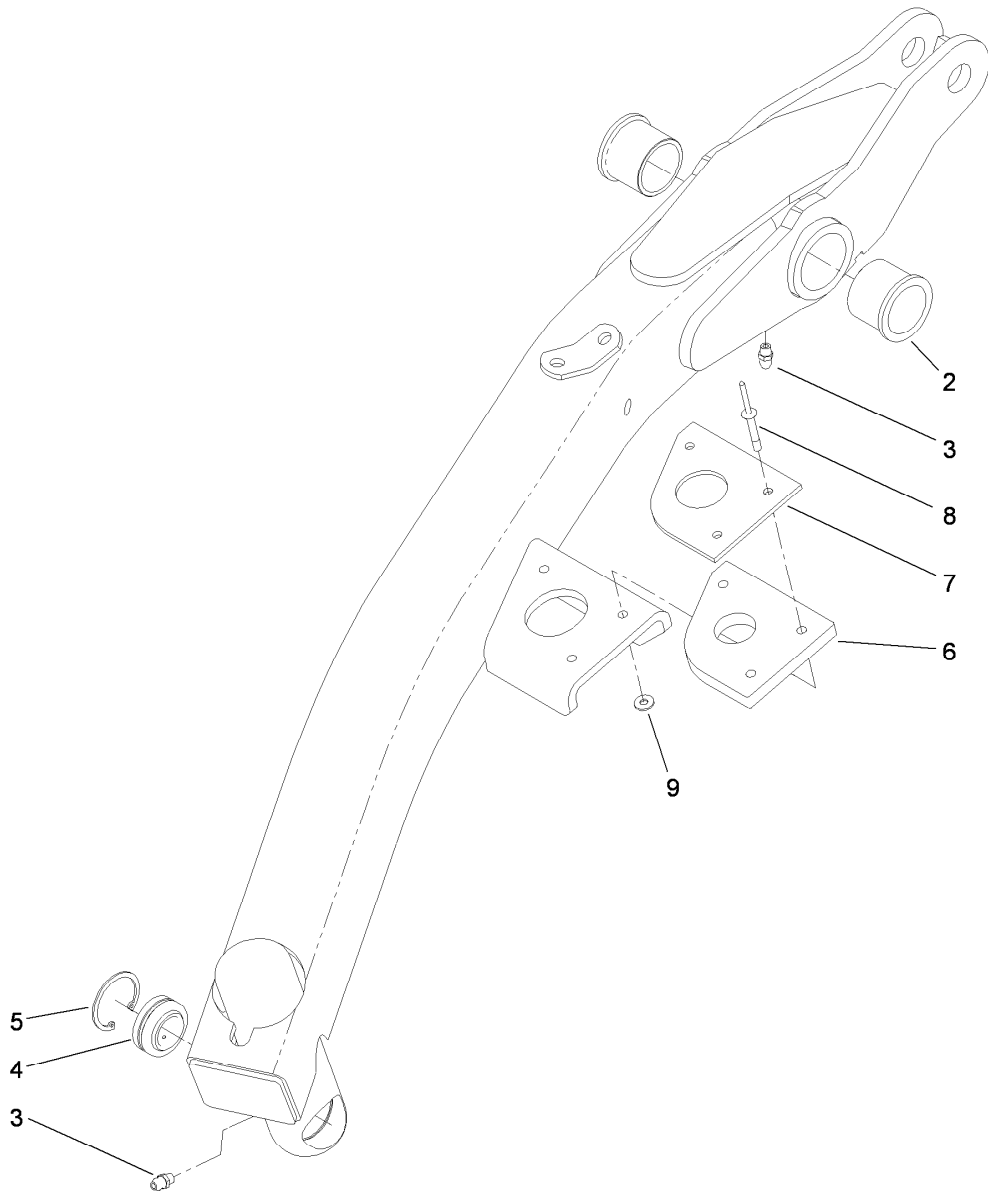
Drive Shaft Assembly No. 110-4704

<i>Ref.</i>	<i>Part Number</i>	<i>Qty.</i>	<i>Description</i>
1	54-9040	1	Yoke-End
2	54-9180	2	U-Joint Kit
2:1	62-3820	1	Fitting-Grease
3	110-4705	1	Shaft-Yoke, Slip
4	110-4706	1	Tube-Yoke, Slip
4:1	302-58	1	Fitting-Straight
5	54-9090	1	Yoke-End



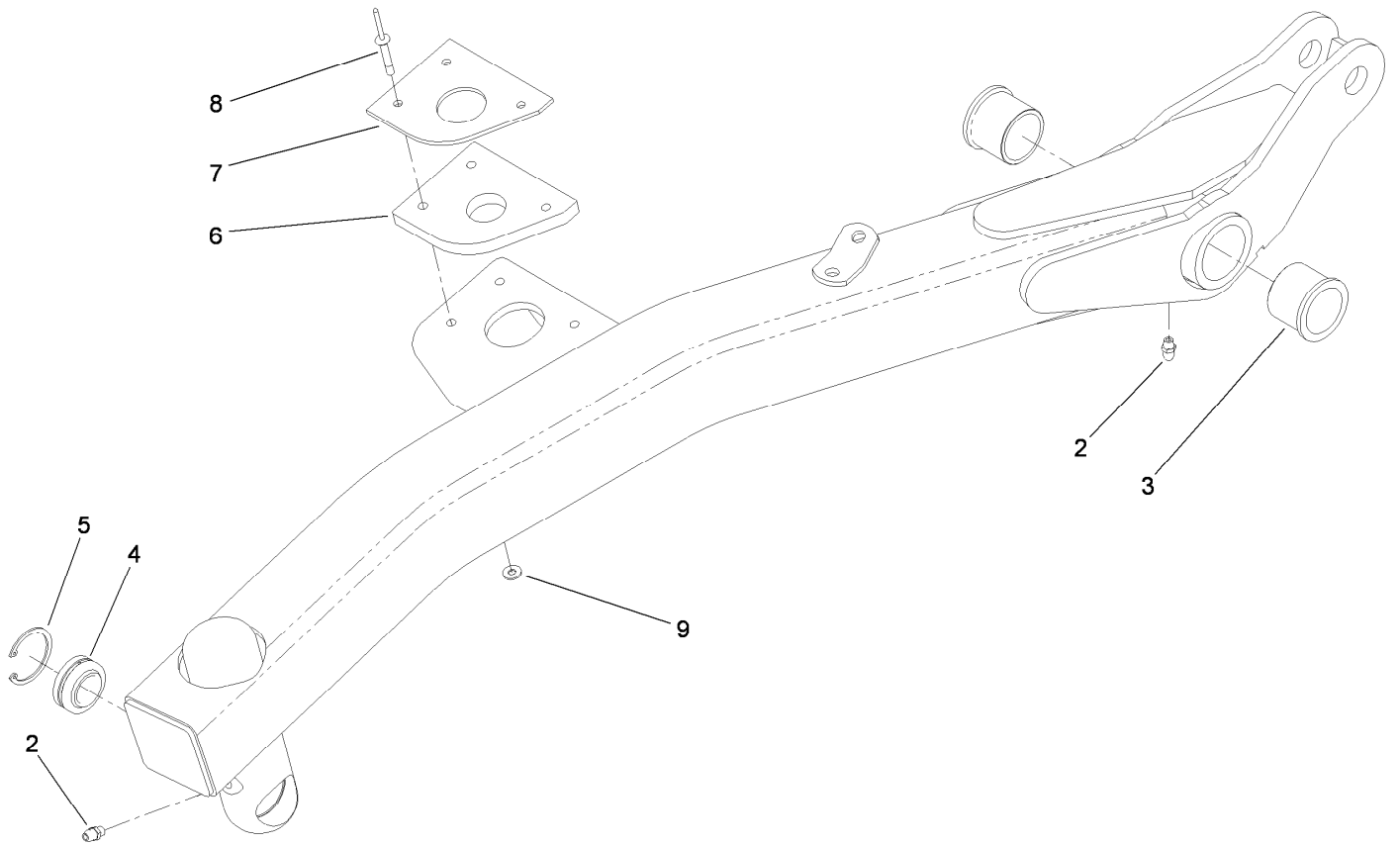
Lift Arm and Rear Height-of-Cut Assembly

<i>Ref.</i>	<i>Part Number</i>	<i>Qty.</i>	<i>Description</i>	<i>Ref.</i>	<i>Part Number</i>	<i>Qty.</i>	<i>Description</i>
1	3213-20	2	Screw-HH	11	105-2808	2	End-Rod
2	3256-6	2	Washer-Flat	12	3220-5	2	Nut-Jam
3	107-3457	2	Pin-Clevis	13	107-7284	2	Tube-HOC
4	110-0641	2	Collar-HOC	14	98-2330	2	Pivot Pin ASM
5	3290-467	2	Pin-Hair	14:2	32121-67	1	Pin-Spring
6	107-7915	4	Washer-Thrust	14:3	32121-61	1	Pin-Roll
7	107-7904	2	Pin-Clevis	15	3272-24	2	Pin-Cotter
8	3290-256	2	Pin-Hair	16	117-0803	1	LH Lift Arm ASM
9	325-12	2	Screw-HH	17	117-0800	1	RH Lift Arm ASM
10	3296-45	2	Nut-Lock, NI				



Left Hand Lift Arm Assembly No. 117-0803

<i>Ref.</i>	<i>Part Number</i>	<i>Qty.</i>	<i>Description</i>
2	256-268	2	Bushing
3	302-5	2	Fitting-Grease
4	105-7441	1	Bearing-Spherical
5	32151-34	1	Ring-Retaining
6	119-2200	1	Pad-Rubber, Rear HOC
7	119-2230	1	Pad-Plastic, Rear HOC
8	110-0606	3	Rivet-Blind
9	3269-26	3	Washer-Plain



Right Hand Lift Arm Assembly No. 117-0800

<i>Ref.</i>	<i>Part Number</i>	<i>Qty.</i>	<i>Description</i>
2	302-5	2	Fitting-Grease
3	256-268	2	Bushing
4	105-7441	1	Bearing-Spherical
5	32151-34	1	Ring-Retaining
6	119-2200	1	Pad-Rubber, Rear HOC
7	119-2230	1	Pad-Plastic, Rear HOC
8	110-0606	3	Rivet-Blind
9	3269-26	3	Washer-Plain

Attachments and Accessories

For 30366 60in Side Discharge Mower Groundsmaster 3320/3280-D Traction Unit

Product Name	Model/Part
High-Speed Blade Tip Kit.....	108-1960
Leaf Mulching Kit	108-5272
Blade-Rotary, Standard (20.5in)	110-4701
Blade-Rotary, High Flow (20.5in).....	110-4702
Blade-Rotary, Atomic (20.5in).....	110-4703
Castor Wheel Kit.....	110-4767
Blade and Belt Kit	110-4770
Skid Replacement Kit	112-9570
Recycler Kit	30348
8in Foam Filled Wheel ASM	93-5974

Notes:

Notes:



Count on it.