



Ignition Switch Resistor Kit

Greensmaster® 3300/3320/3400/3420 Series Traction Unit

Model No. 121-6668

Installation Instructions

Installation

This kit is for the following units:

- Model No. 04510—Serial No. 3110000001 to 311000306
- Model No. 04520—Serial No. 3110000001 to 311000234
- Model No. 04530—Serial No. 3110000001 to 311000134
- Model No. 04540—Serial No. 3110000001 to 311000129

1. Position the machine on a level surface. Set the parking brake, turn the ignition off, and remove the key.
2. Remove the console cover and set it aside.
3. Remove the old ignition switch connector from the ignition switch and plug it into the large connector on the kit (Figure 1).

5. Plug the large 2 pin connector into the connector on the wire harness (Figure 1).

Note: If the unit is equipped with a light kit, plug the remaining connector into the light kit.

6. Install the console cover.

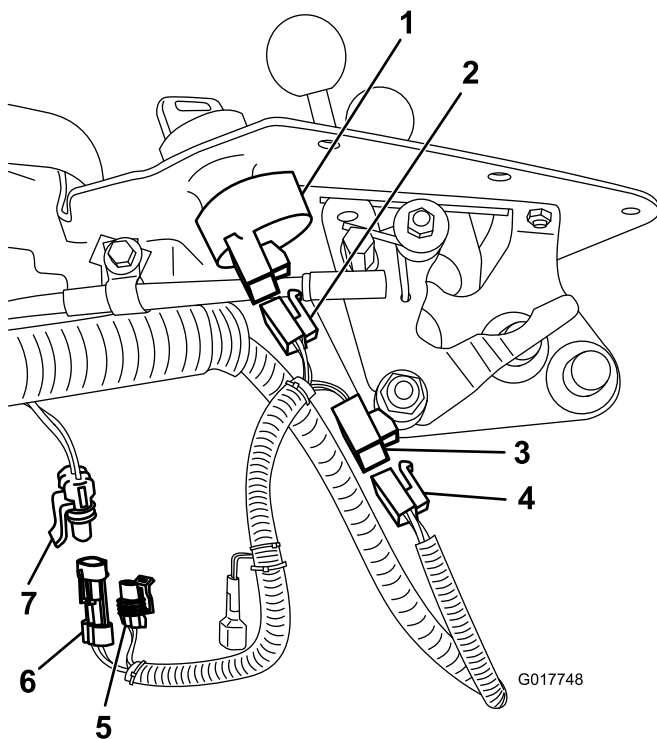


Figure 1

- | | |
|----------------------------------|---------------------------|
| 1. Ignition switch | 5. Light kit connector |
| 2. New ignition switch connector | 6. Large 2 pin connector |
| 3. Large connector | 7. Wire harness connector |
| 4. Old ignition switch connector | |

4. Plug the new ignition switch connector into the ignition switch (Figure 1).

