

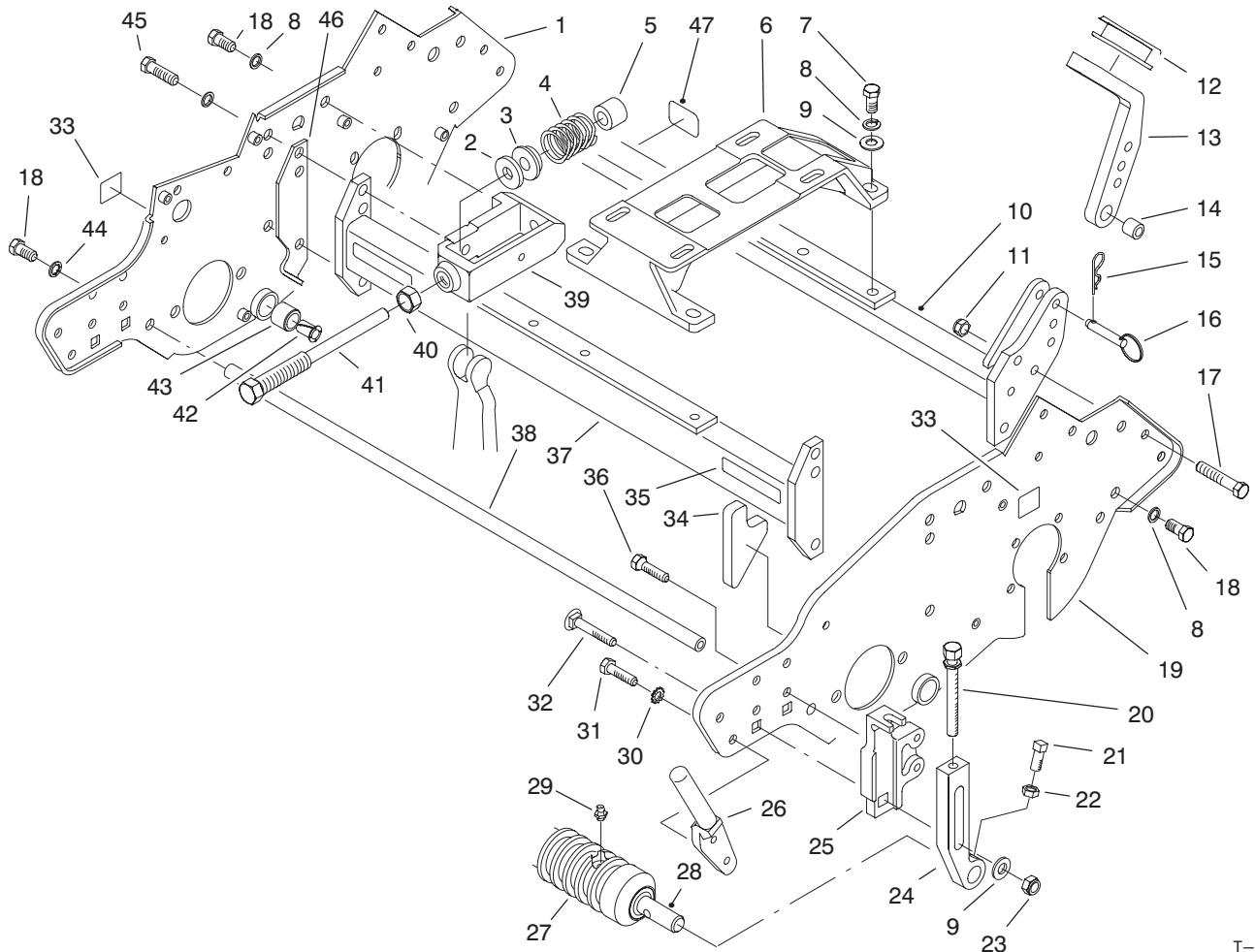


MODEL NO. 04052-60465 &amp; UP

PARTS  
CATALOG

## GREENSMASTER® 1000

### Traction Unit & Cutting Unit



T-1995A

## FRAME ASSEMBLY

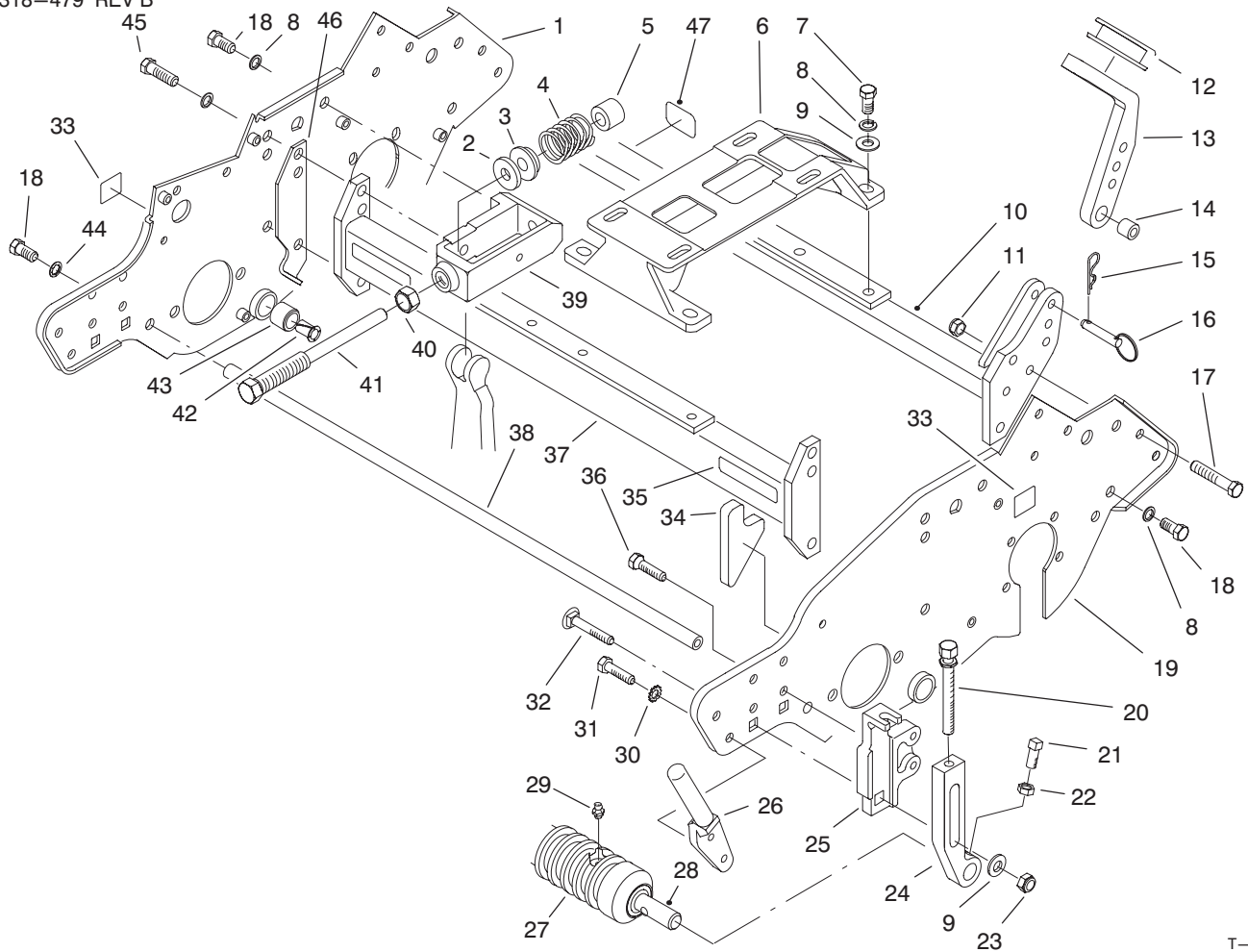
Ref. No.	Part No.	Description	No. Used
1	93-6093	Side Plate Assembly RH (Incl. Ref. #33)	1
2	65-8680	Washer - Thrust	2
3	65-6380	Collar - Thrust	2
4	65-6400	Spring - Compression	2
5	65-6360	Support - Spring	2
6	88-7670	Base - Engine	1
7	323-5	Screw - Cap Hex. Hd.	4
8	3253-21	Washer - Spring Lock	16
9	3256-24	Washer - Flat	6
10	93-6025	Rear Frame	1
11	3296-29	Nut - Lock	2
12	65-7510	Grommet - Handle	2
13	93-6038	Arm - Handle LH	1
*	93-6037	Arm - Handle RH	1
14	93-6024	Bushing - Handle Support	2

Ref. No.	Part No.	Description	No. Used
15	3290-467	Pin - Cotter, Hair	2
16	93-6029	Pin - Ring	2
17	322-9	Screw - Cap Hex. Hd.	2
18	323-4	Screw - Cap Hex. Hd.	12
19	93-6094	Side Plate Assembly LH (Incl. Ref. #33)	1
20	93-6051	Screw - Height of Cut	2
21	3242-4	Screw - Set	2
22	3218-2	Nut - Jam	2
23	3296-39	Nut - Lock	2
24	93-6090	Arm - Height of Cut	2
25	93-6049	Bracket - Height of Cut, LH	1
*	93-6048	Bracket - Height of Cut, RH	1
26	65-8570	Rod - Grass Catcher	2
27	88-6790	Wihle Roller Assembly (Incl. Ref. #28 & 29)	1

\*Not Illustrated

© The TORO Company - 1995, Rev. 1996  
All Rights Reserved

TPS



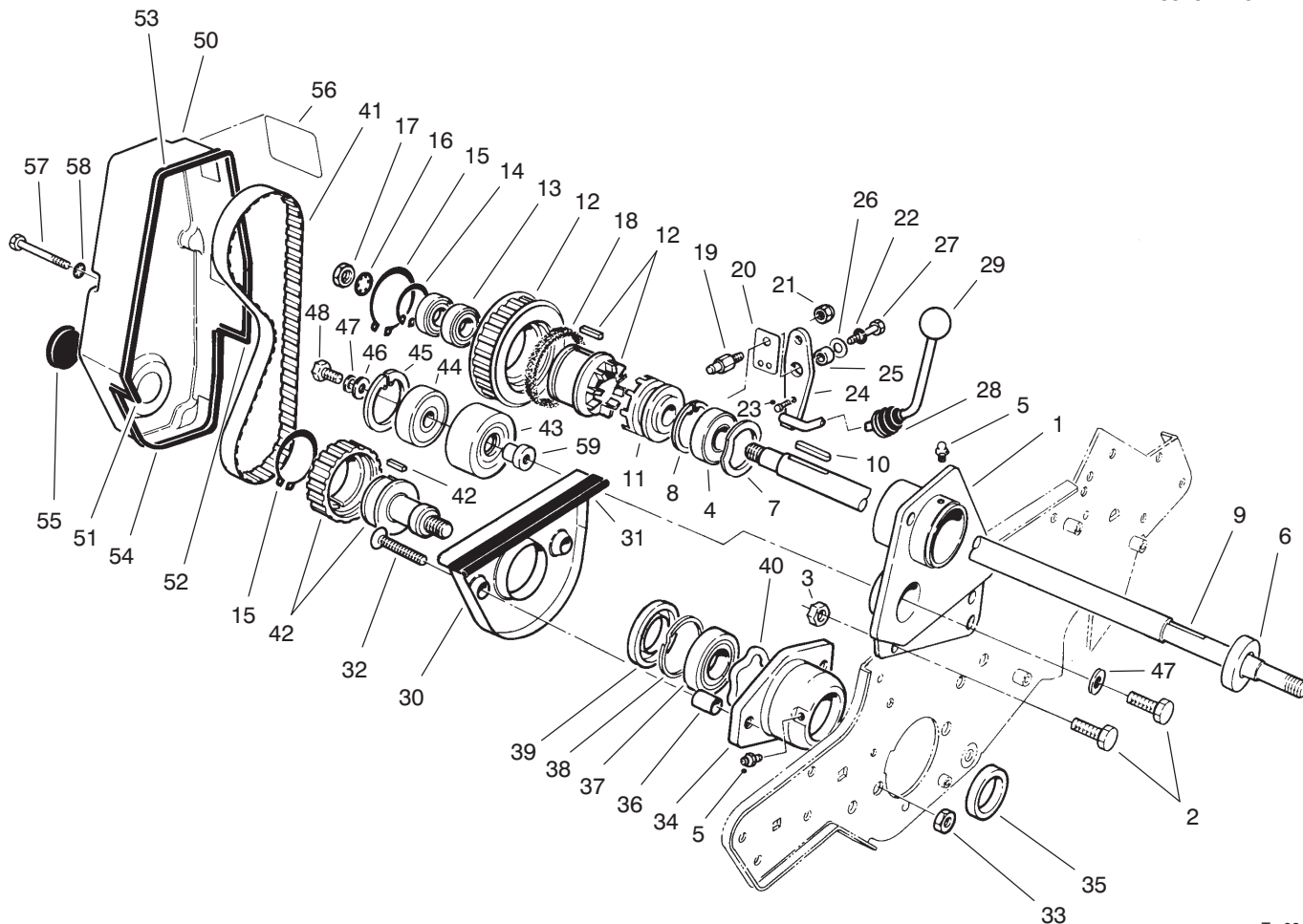
T-1995A

## FRAME ASSEMBLY (Continued)

Ref. No.	Part No.	Description	No. Used
28	52-3180	Bearing	2
29	302-5	Fitting - Grease	2
30	3255-8	Washer - Lock	4
31	322-2	Screw - Cap Hex. Hd.	4
32	3231-5	Screw - Carriage	2
33	88-8950	Decal - Warning	3
33	93-9356	Decal - Warning (Europe)	3
33	93-9389	Decal - Warning (Japan)	3
34	93-6064	Seal - Grass Catcher	1
35	55-4300	Decal - Warning	2
35	93-6696	Decal - Warning (Europe)	2
35	84-2940	Decal - Warning (Japan)	2
36	92-8914	Bolt - Tapered Face	4
37	93-6068	Front Frame Tube Assembly (Incl. Ref. #35)	1

Ref. No.	Part No.	Description	No. Used
38	88-7110	Rod - Frame Support	1
39	65-8670	Adjuster - Frame	2
40	3220-6	Nut - Jam	2
41	65-8690	Screw - Adjusting	2
42	52-2890	Bushing	2
43	63-9510	Bushing Assembly	2
44	3254-6	Washer - Int. Tooth Lock	2
45	323-18	Screw - Cap Hex. Hd.	2
46	88-7100	Spacer - RH	1
*	88-7090	Spacer - LH	1
47	53-4860	Decal - Safety	1
47	93-7842	Decal - Safety (Japan)	1
47	93-7252	Decal - CE Mark (Europe)	1

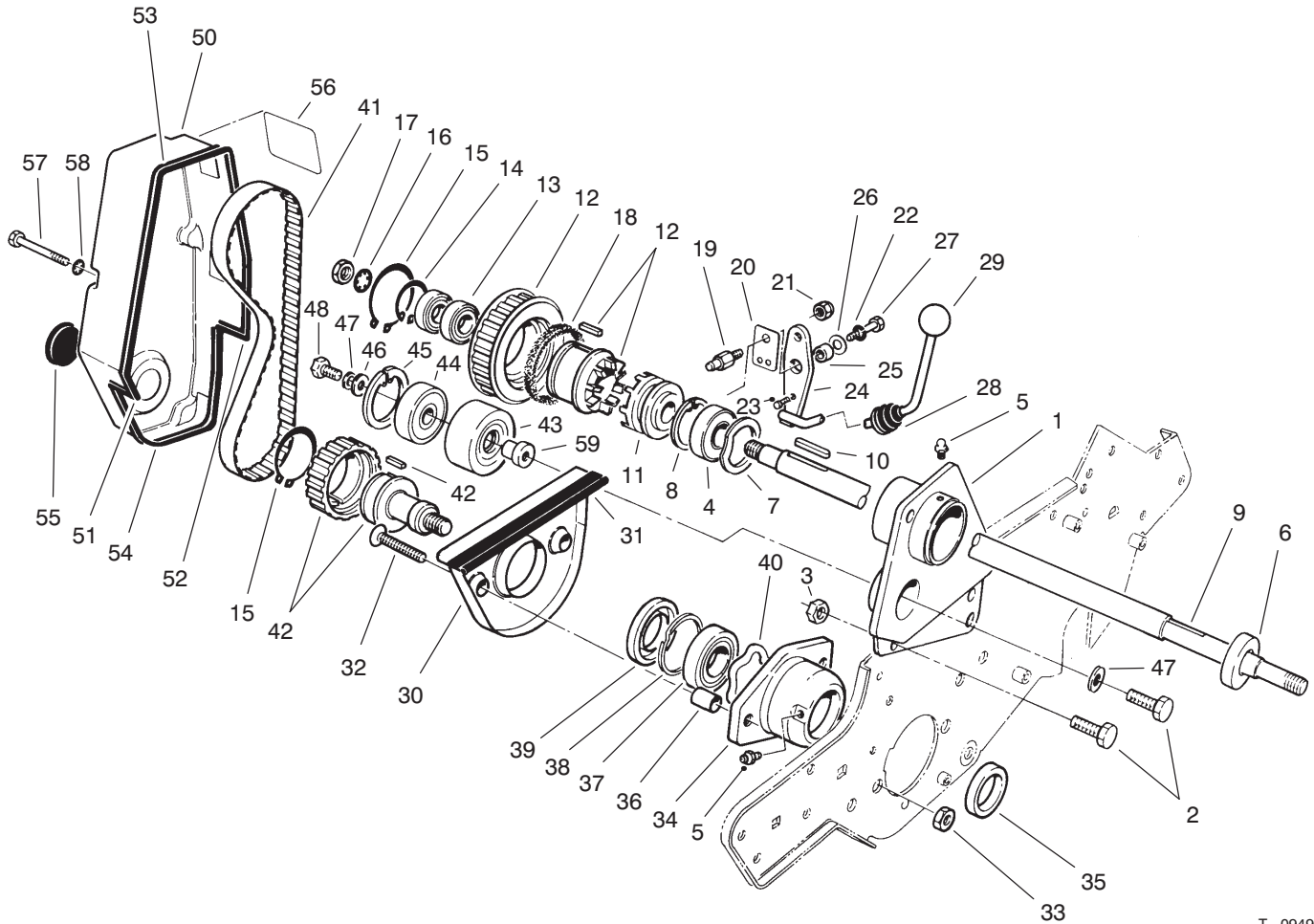
\*Not Illustrated



T-0949

## REEL DRIVE ASSEMBLY

Ref. No.	Part No.	Description	No. Used	Ref. No.	Part No.	Description	No. Used
1	92-8013	Housing - Clutch	1	27	321-4	Screw - Cap Hex. Hd.	1
2	322-5	Screw - Cap Hex. Hd.	3	28	65-8960	Boot - Clutch	1
3	3296-29	Nut - Lock	2	29	233-69	Knob	1
4	251-318	Bearing - Ball	1	30	65-7190	Cover - Groomer Arm	1
5	302-5	Fitting - Grease	2	31	65-7131	Trim - Groomer Arm Cover	1
6	253-118	Seal - Oil	1	32	3289-23	Screw - Flat Hd.	2
7	88-7720	Washer - Wave	1	33	3296-39	Nut	2
8	32120-11	Ring - Retaining	1	34	65-8640	Housing - Bearing	1
9	93-6056	Shaft - Power	1	35	253-96	Seal	1
10	88-7150	Key - Square	2	36	65-8290	Standoff - Cover	2
11	65-6940	Clutch - Jaw Driver	1	37	251-342	Bearing - Self-Aligning	1
12	88-7830	Clutch & Pulley Assembly	1	38	32151-92	Ring - Retaining	1
13	251-336	Bearing - Ball	2	39	253-163	Seal	1
14	32151-89	Ring - Retaining	1	40	3290-485	Washer - Wave	1
15	32151-95	Ring - Retaining	2	41	65-6200	Belt - Reel Drive	1
16	3254-4	Washer - Lock I.T.L.W.	1	42	88-7840	Pulley & Drive Assembly	1
17	3220-5	Nut - Jam	1	43	88-7850	Idler Pulley Assembly (Incl. Ref. #44-48 & 59)	1
18	65-6970	Seal - Felt	1	44	38-7820	Bearing - Ball	1
19	93-9014	Pin - Actuator	1	45	32120-42	Ring - Snap	1
20	65-6290	Spring - Clutch Detent	1	46	88-7200	Washer - Flat	1
21	3296-42	Nut - Lock	1	47	3253-4	Washer - Lock	2
22	3253-3	Washer - Lock	1	48	322-3	Screw - Cap Hex. Hd.	1
23	3259-15	Screw - Drive	1	50	88-7700	Cover - Reel Drive	1
24	88-7170	Lever - Clutch	1	51	88-7770	Strip - Seal Front	1
25	88-7860	Spacer	1	52	88-7780	Strip - Seal Rear	1
26	3290-414	Washer	1				

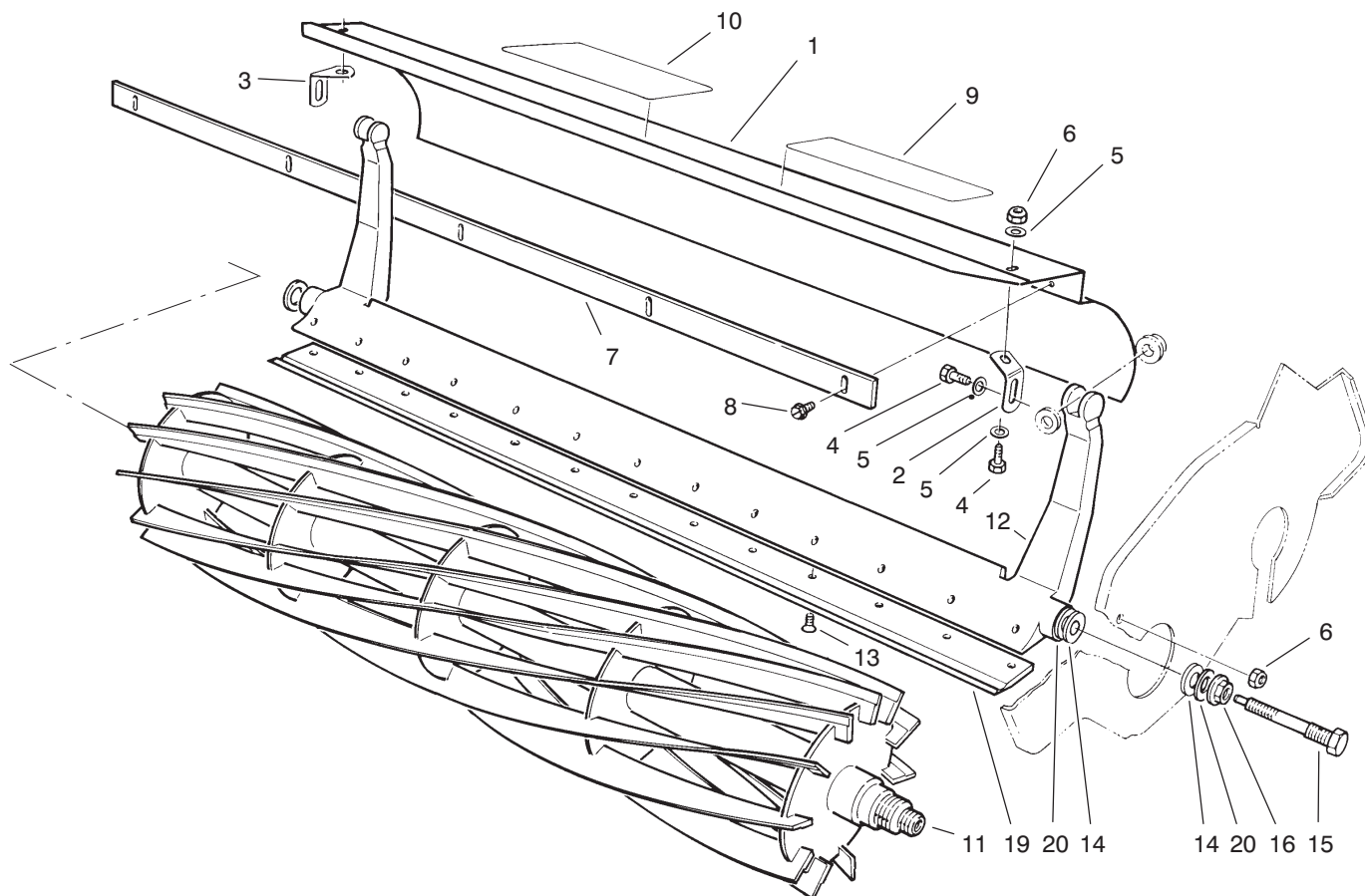


T-0949

## REEL DRIVE ASSEMBLY (Continued)

Ref. No.	Part No.	Description	No. Used
53	88-7790	Strip - Seal Upper	1
54	88-7800	Strip - Seal Lower	1
55	237-160	Plug	1
56	65-7660	Decal - Reel Engagement (Japan)	1
56	93-7346	Decal - Reel Engagement (Europe)	1

Ref. No.	Part No.	Description	No. Used
56	92-4817	Decal - Reel Engagement (Japan)	1
57	321-20	Screw - Cap Hex. Hd.	4
58	3254-8	Washer - Lock I.T.L.W.	4
59	88-7190	Spacer - Pulley Support	1



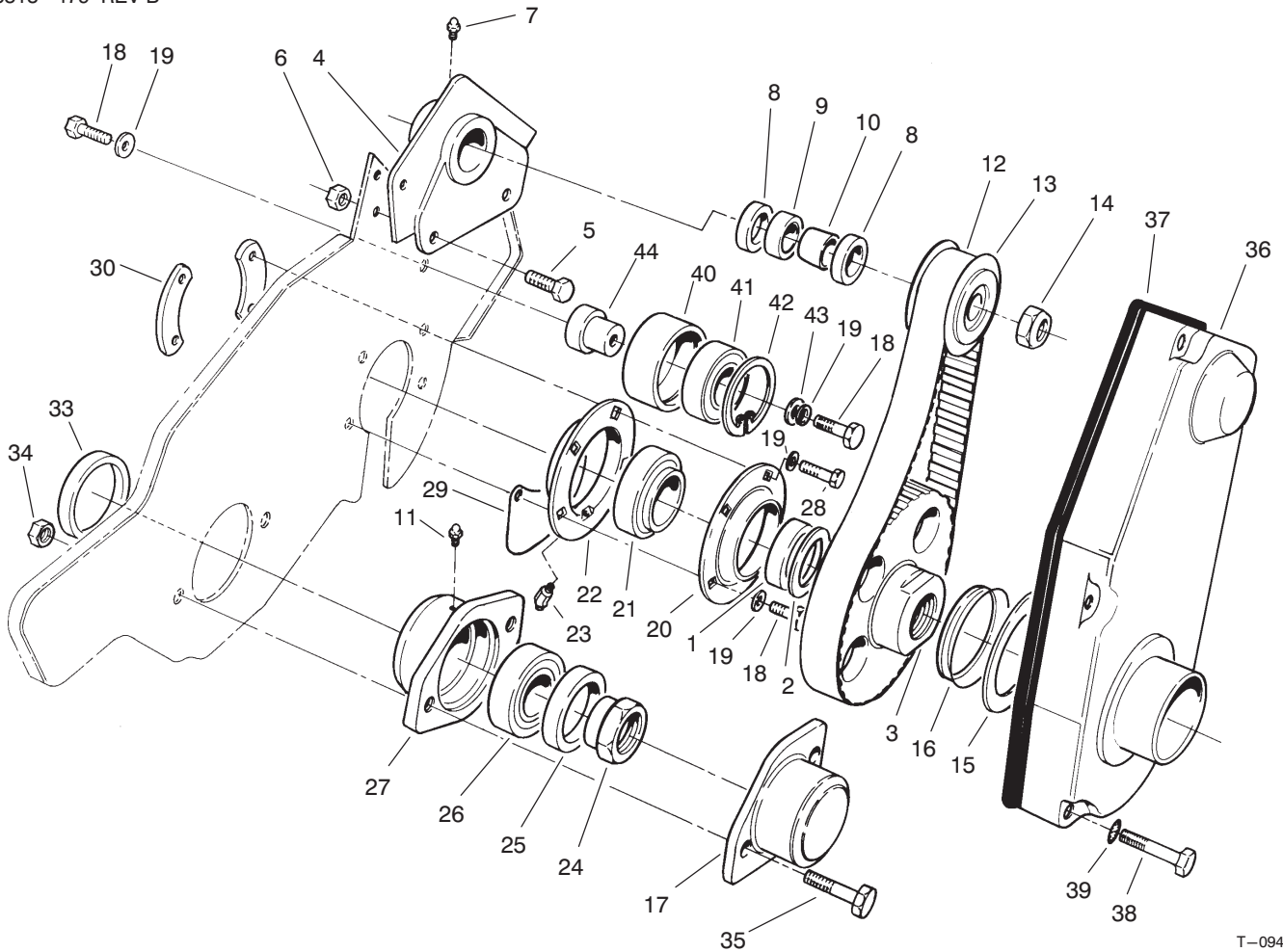
T-0947A

## REEL ASSEMBLY

Ref. No.	Part No.	Description	No. Used
1	93-6069	Grass Shield Assembly (Incl. Ref. #9 & 10)	1
2	65-6450	Bracket - Shield LH	1
3	65-6460	Bracket - Shield RH	1
4	321-3	Screw - Cap Hex. Hd.	4
5	3256-22	Washer - Flat	6
6	3296-42	Nut - Lock	4
7	36-7260	Bar - Cutoff	1
8	32144-73	Screw - Self Tapping	5
9	62-5070	Decal - Warning	1
9	93-8064	Decal - Warning (Europe)	1
9	84-6560	Decal - Warning (Japan)	1
10	93-6098	Decal - Service	1
10	93-7285	Decal - Service (Danish)	1
10	93-7286	Decal - Service (Dutch)	1
10	93-7287	Decal - Service (Finnish)	1
10	93-7288	Decal - Service (Italian)	1
10	93-7289	Decal - Service (Norwegian)	1

Ref. No.	Part No.	Description	No. Used
10	93-7290	Decal - Service (Portuguese)	1
10	93-7291	Decal - Service (Swedish)	1
10	93-9391	Decal - Service (French)	1
10	93-9392	Decal - Service (Spanish)	1
10	93-9393	Decal - Service (German)	1
10	93-9394	Decal - Service (Japan)	1
11	93-6097	Reel Assembly - 11 Blade	1
*	93-6087	Reel Assembly - 8 Blade	1
12	93-6053	Bedbar	1
13	57-4910	Screw - Special	13
14	52-2900	Washer - Poly	4
15	65-6270	Bolt - Bedbar	2
16	32128-48	Nut - Flange	2
19	93-4264	Bedknife - 1/8"	1
*	93-4263	Bedknife - Tournament	1
*	93-4262	Bedknife - Micro	1
20	52-2860	Washer	4

\*Not Illustrated



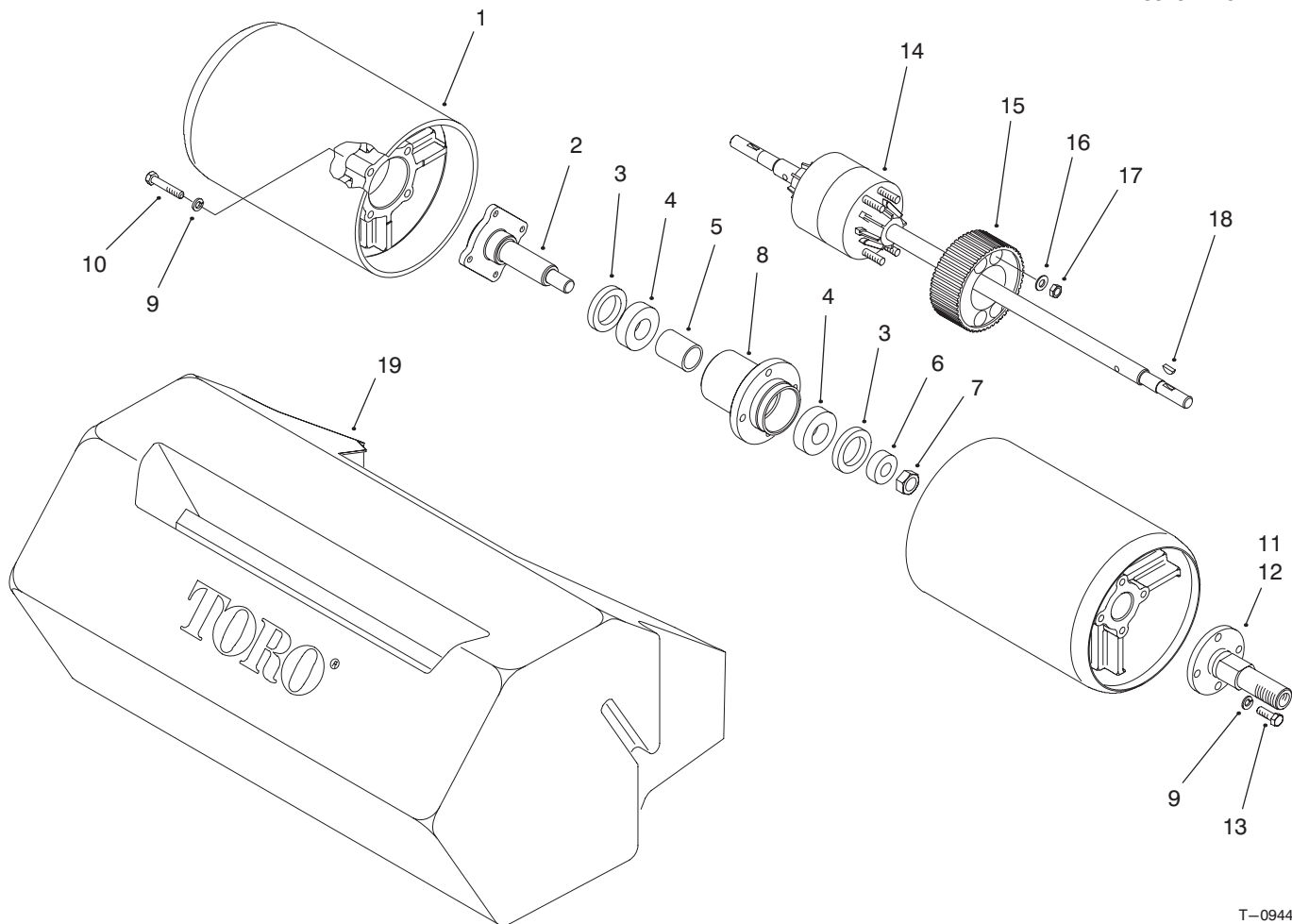
T-0945

## DRUM DRIVE ASSEMBLY

Ref. No.	Part No.	Description	No. Used
1	88-7530	Spacer	2
2	88-7540	Washer - Backup	2
3	88-7560	Pulley - LH	1
*	88-7550	Pulley - RH	1
4	88-7470	Housing - LH	1
*	88-7490	Housing - RH	1
5	322-5	Screw - Cap Hex. Hd.	4
6	3296-29	Nut - Lock	4
7	302-19	Fitting - Grease	2
8	253-160	Seal	4
9	251-338	Bearing	2
10	86-7130	Spacer	2
11	302-5	Fitting - Grease	1
12	65-6210	Belt	2
13	65-6660	Pulley	2
14	3296-57	Nut	2
15	65-6570	Washer	2
16	253-161	Seal - V-Ring	2
17	65-6220	Cover - Bearing	1
18	322-3	Screw - Cap Hex. Hd.	10
19	3253-4	Washer - Lock	10
20	65-6590	Flangette	2
21	88-7880	Bearing	2

Ref. No.	Part No.	Description	No. Used
22	65-8710	Flangette (Incl. Ref. #23)	2
23	302-11	Fitting - Grease	2
24	92-7302	Nut - Bearing Lock	1
25	253-163	Seal	1
26	251-342	Bearing	1
27	65-8640	Housing - Bearing	1
29	65-8720	Closure	2
30	65-8730	Clamp - Bearing	4
33	253-96	Seal	1
34	3296-39	Nut - Lock	2
35	323-7	Screw - Cap Hex. Hd.	2
36	88-7680	Cover - Drum Belt LH	1
*	88-7690	Cover - Drum Belt RH	1
37	88-7810	Seal Strip - Drum Cover	2
38	321-11	Screw - Cap Hex. Hd.	8
39	3254-8	Washer - Lock I.T.L.W.	8
40	88-7850	Idler Pulley Assembly (Incl. Ref. #41-45 & 47)	2
41	38-7820	Bearing - Ball	2
42	32120-42	Ring - Snap	2
43	88-7200	Washer - Flat	2
44	88-7190	Spacer - Pulley Support	2

\*Not Illustrated

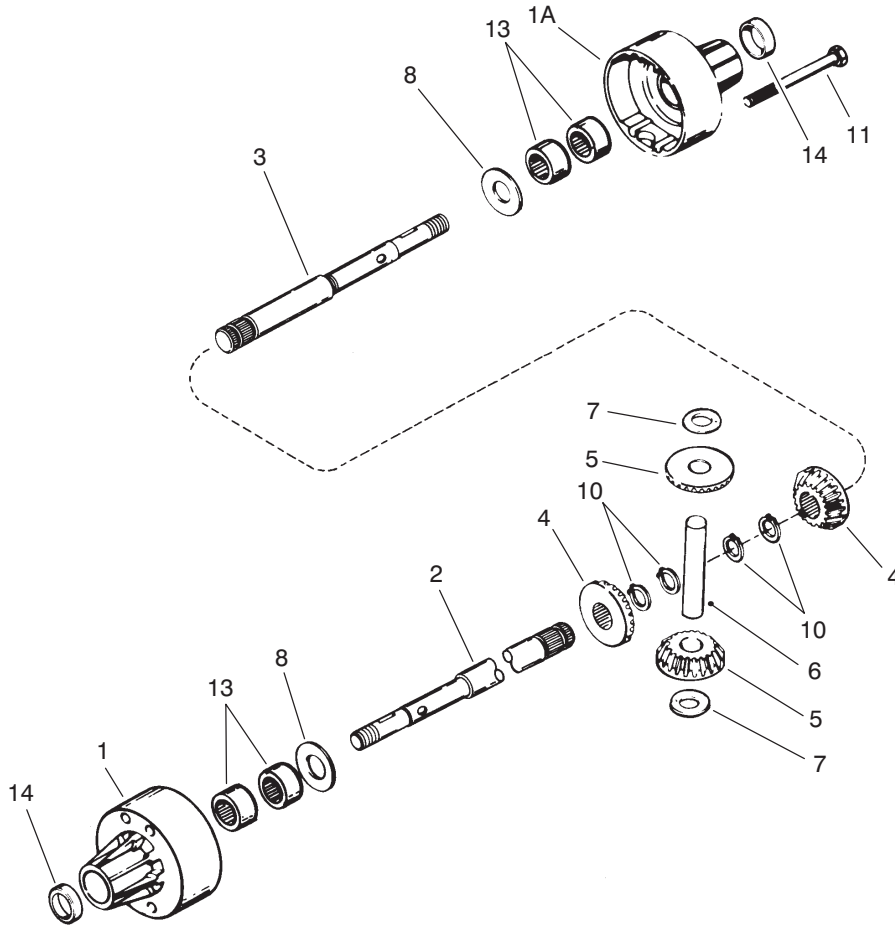


T-0944B

## DRUM AND BASKET ASSEMBLY

Ref. No.	Part No.	Description	No. Used
1	93-9047	Drum	2
2	94-5850	Spindle - Drum	1
3	253-159	Seal - Spring Lip	2
4	251-257	Bearing	2
5	65-6520	Spacer - Bearing	1
6	65-6530	Spacer - Seal	1
7	3296-33	Nut - Lock	1
8	94-5852	Hub - Drum	1
9	3253-4	Washer - Lock	16
10	322-9	Screw - Cap Hex. Hd.	8

Ref. No.	Part No.	Description	No. Used
11	88-7520	Shaft - Drum LH	1
12	88-7510	Shaft - Drum RH	1
13	322-5	Screw - Cap Hex. Hd.	8
14	93-6055	Differential Assembly Peerless Model 100-111	1
15	65-9120	Pulley - Differential	1
16	3256-23	Washer - Flat	4
17	3296-29	Nut - Lock	4
18	3257-32	Key - Woodruff	2
19	65-7230	Basket - Grass	1

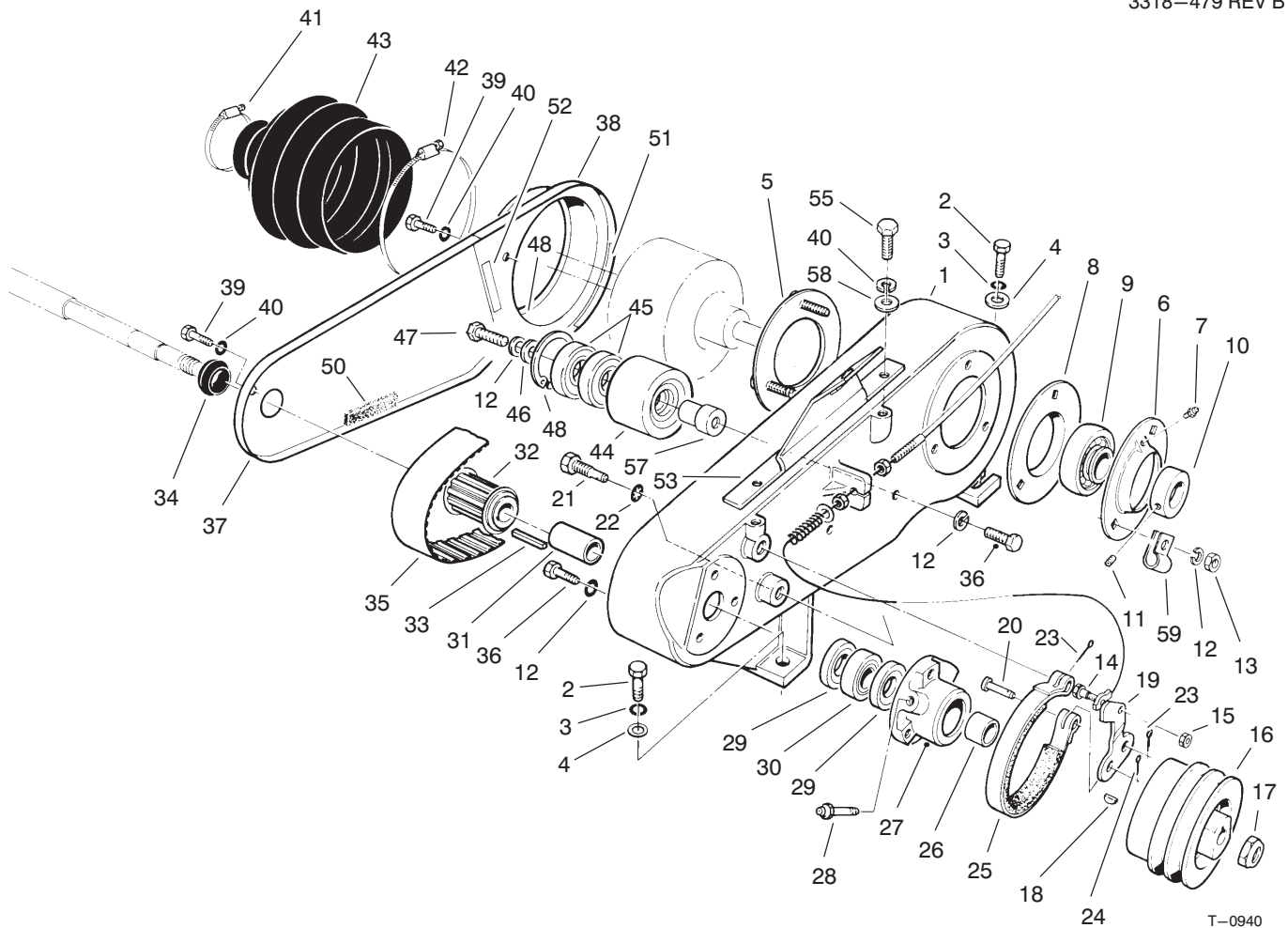


T-1571

## DIFFERENTIAL ASSEMBLY PEERLESS MODEL NO. 100-111

Ref. No.	Part No.	Description	No. Used
1	774881	Housing - Differential Carrier (Incl. Ref. #13 & 14)	1
1A	774882	Housing - Differential Carrier (Incl. Ref. #13 & 14)	1
2	6045-P1	Axle (20-17/32" Long)	1
3	6046-P1	Axle (6-19/32" Long)	1
4	778221	Gear Bevel	2
5	778068	Gear Pinion	2

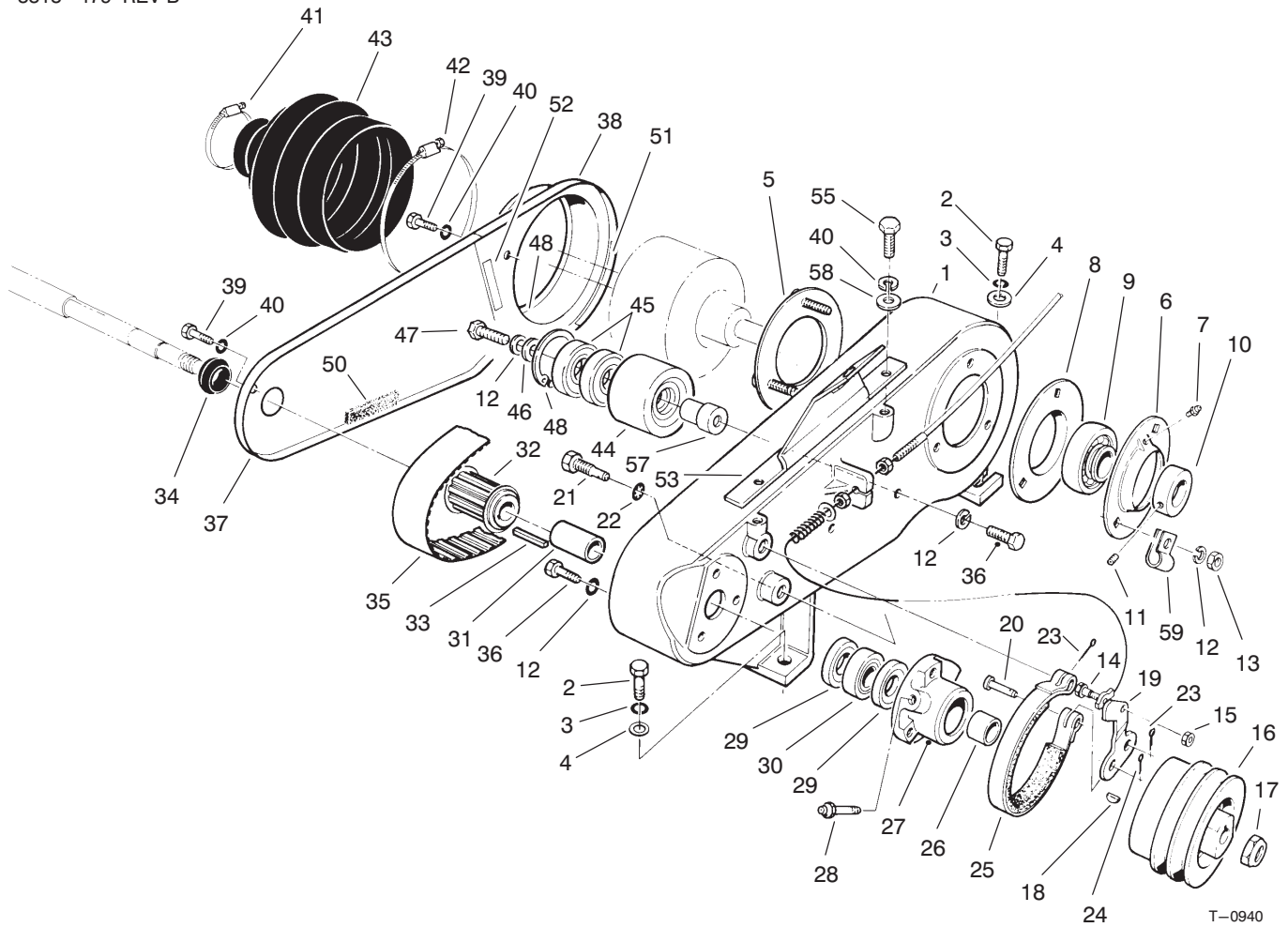
Ref. No.	Part No.	Description	No. Used
6	786040	Pin Drive	1
7	780096	Washer Thrust	2
8	780001	Washer	2
10	792125	Ring - Retaining (Pkg. of 2)	4
11	792093	Screw Flanged Hex Hd.	4
13	780140	Bearing Needle	4
14	788042	Seal Oil	2



T-0940

## COUNTERSHAFT ASSEMBLY

Ref. No.	Part No.	Description	No. Used	Ref. No.	Part No.	Description	No. Used
1	88-7230	Housing - Countershaft	1	25	65-8700	Band - Brake	1
2	323-5	Screw - Cap Hex. Hd.	4	26	86-7130	Spacer - Short	1
3	3253-21	Washer - Lock	4	27	65-6760	Housing - Bearing	1
4	3256-24	Washer - Flat	4	28	302-64	Fitting - Grease	1
5	65-6720	Plate - Screw	1	29	253-160	Seal	2
6	65-6700	Flangette	1	30	251-338	Bearing	1
7	302-55	Fitting - Grease	1	31	86-7140	Spacer - Long	1
8	65-6710	Flangette	1	32	65-8910	Pulley - Countershaft	1
9	251-343	Bearing (Incl. Ref. #10 & 11)	1	33	65-6850	Key	1
10		Collar - Locking	1	34	88-7710	Seal - Countershaft	1
11		Screw - Set	2	35	65-9080	Belt	1
12	3253-4	Washer - Lock	8	36	322-5	Screw - Cap Hex. Hd.	4
13	3218-2	Nut - Jam	3	37	88-7240	Cover - Box Front	1
14	11-9030	Bolt - Shoulder	1	38	88-7250	Cover - Box Rear	1
15	3296-42	Nut - Lock	1	39	321-2	Screw - Cap Hex. Hd.	3
16	92-9212	Pulley - Input Shaft	1	40	3253-3	Washer - Lock	5
17	3296-57	Nut - Lock	1	41	2412-139	Clamp - Hose	1
18	3257-32	Key	1	42	2412-140	Clamp - Hose	1
19	65-8610	Lever - Brake	1	43	65-6800	Boot - Differential	1
20	283-75	Pin - Clevis	1	44	88-7870	Idler Pulley Assembly (Incl. Ref. #12, 45-48 & 57)	1
21	65-6810	Support - Brake	2	45	38-7820	Bearing - Ball	2
22	3254-6	Washer - Lock I.T.L.W.	2	46	88-7200	Washer - Flat	1
23	3272-6	Pin - Cotter	2	47	322-3	Screw - Cap Hex. Hd.	1
24	3272-8	Pin - Cotter	1	48	32120-42	Ring - Retaining	1
				50	65-6901	Strip - Cover Seal	1

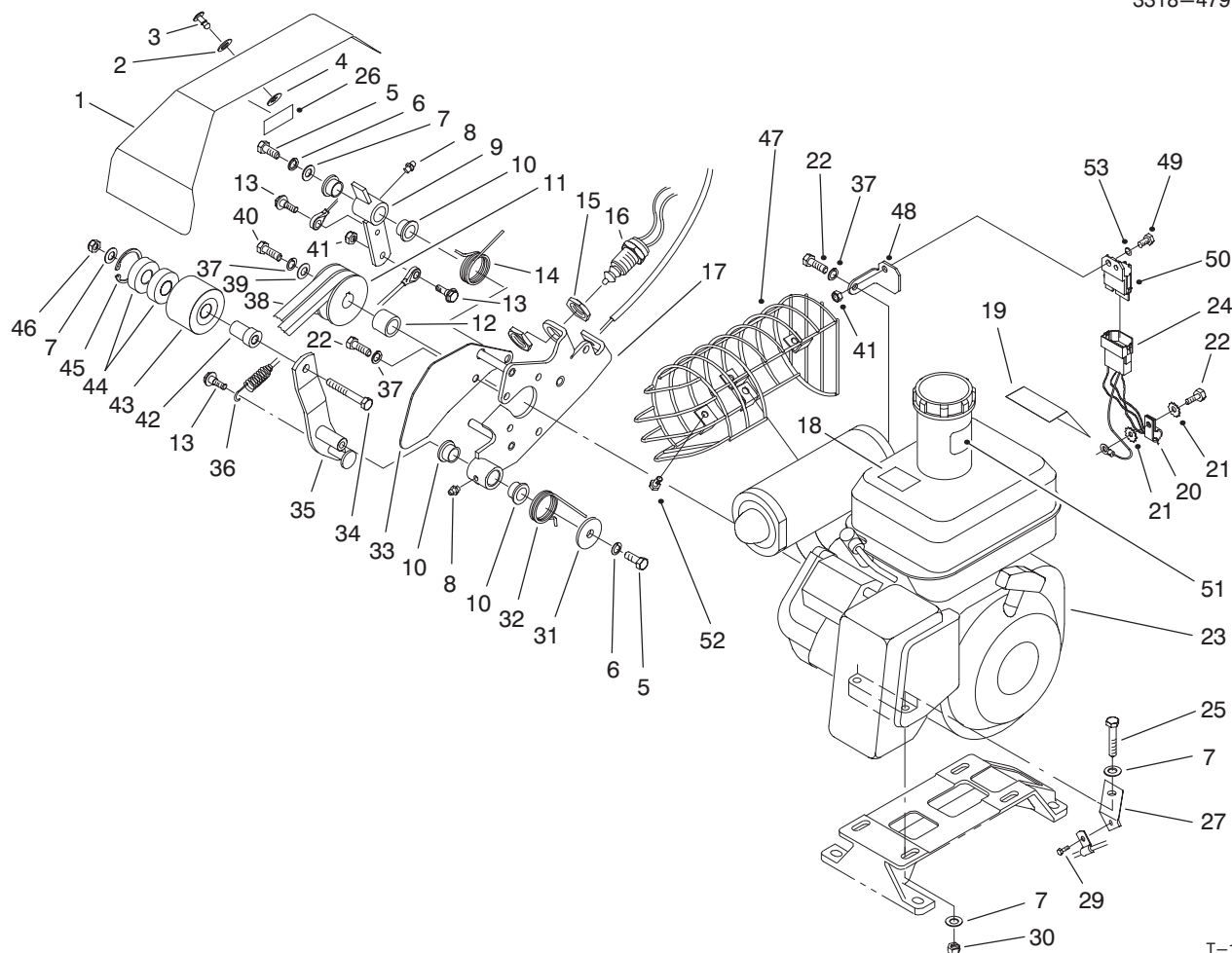


T-0940

## COUNTERSHAFT ASSEMBLY (Continued)

Ref. No.	Part No.	Description	No. Used
51	65-6902	Strip - Cover Seal	1
52	65-6903	Strip - Cover Seal	1
53	93-1448	Cover Bracket	1
55	321-3	Screw - Cap Hex. Hd.	2

Ref. No.	Part No.	Description	No. Used
57	88-7380	Spacer - Pulley Support	1
58	3256-22	Washer - Flat	2
59	88-7970	Clip	1

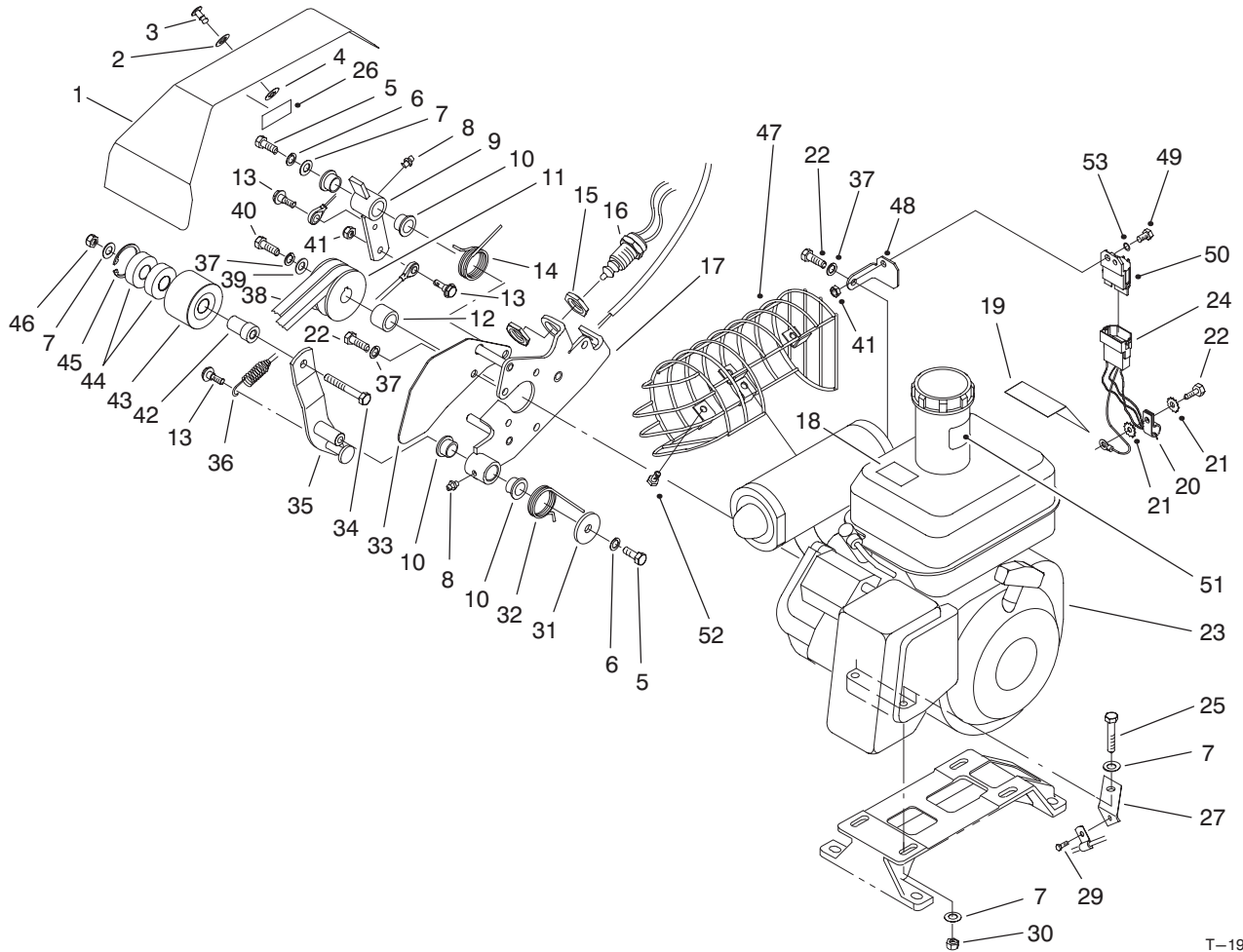


T-1996-3

## ENGINE AND BELLCRANK ASSEMBLY

Ref. No.	Part No.	Description	No. Used
1	94-9007	Cover - Bellcrank (Incl. Ref. #26)	1
2	3256-2	Washer - Flat	1
3	93-6074	Stud	1
4	93-6073	Retainer	1
5	323-4	Screw - Cap Hex. Hd.	2
6	3253-21	Washer - Spring Lock	2
7	3256-56	Washer - Flat	10
8	302-5	Fitting - Grease	2
9	93-6014	Lever	1
10	65-8770	Bushing	4
11	92-9216	Pulley - Input Drive	1
12	65-8260	Spacer - Engine Shaft	1
13	11-9030	Bolt - Shoulder	3
14	93-6011	Spring - Torsion	1
15	3218-20	Nut - Jam	2
16	87-5490	Switch (Incl. Ref. #15)	1
17	93-6015	Bracket - Clutch	1
18	63-8440	Decal - Hot	1
18	93-8069	Decal - Hot (Europe)	1
18	83-2560	Decal - Hot (Japan)	1
19	88-7620	Decal - Danger	1
19	93-7348	Decal - Danger (Europe)	1
19	92-4813	Decal - Danger (Japan)	1
20	2412-93	Clamp - R	1
21	3255-9	Washer - External Lock	2

Ref. No.	Part No.	Description	No. Used
22	48-7700	Screw - Cap Hex. Hd.	7
23	94-9003	Engine Assembly Kawasaki Model FE120G-CS00 (Incl. Ref. #18-19 & 51)	1
24	94-5862	Harness - Wire	1
24	94-5865	Harness - Wire (Europe)	1
25	322-9	Screw - Cap Hex. Hd.	4
26	67-5360	Decal - Danger	1
26	93-7273	Decal - Danger (Europe)	1
26	84-7280	Decal - Danger (Japan)	1
27	88-7960	Bracket - Throttle Cable	1
29	32144-73	Screw - Hex. Washer Hd. Thread Form	1
30	3296-29	Nut - Lock	4
31	93-6099	Washer	1
32	93-6012	Spring - Torsion, Clutch	1
33	93-6013	Shield - Belt	1
34	323-11	Screw - Cap Hex. Hd.	1
35	93-6003	Lever - Clutch	1
36	93-9024	Cable Assembly - Link	1
37	3253-4	Washer - Spring Lock	7
38	92-9218	V-Belt, Matched Set	1
39	65-8270	Washer	1
40	48-9460	Screw - Cap Hex. Hd.	1
41	3296-42	Nut - Lock	4

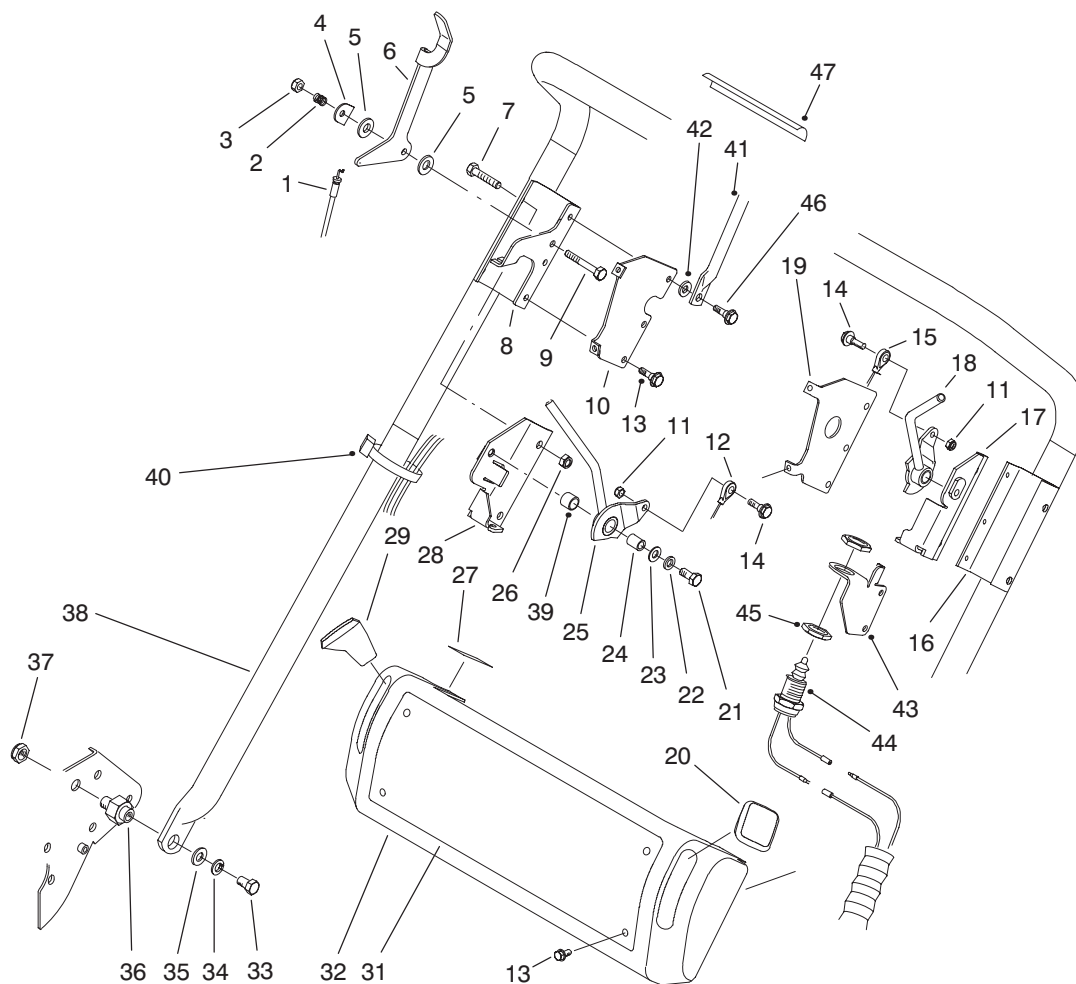


T-1996-3

## ENGINE AND BELLCRANK ASSEMBLY (Continued)

Ref. No.	Part No.	Description	No. Used
42	88-7350	Spacer - Pulley Support	1
43	88-7890	Idler Pulley Assembly (Incl. Ref. #42, 44 & 45)	1
44	38-7820	Bearing - Ball	2
45	32120-42	Ring - Retaining	1
46	3296-39	Nut - Lock	1
47	93-6092	Guard - Muffler (Europe)	1
48	94-5861	Bracket - Module	1

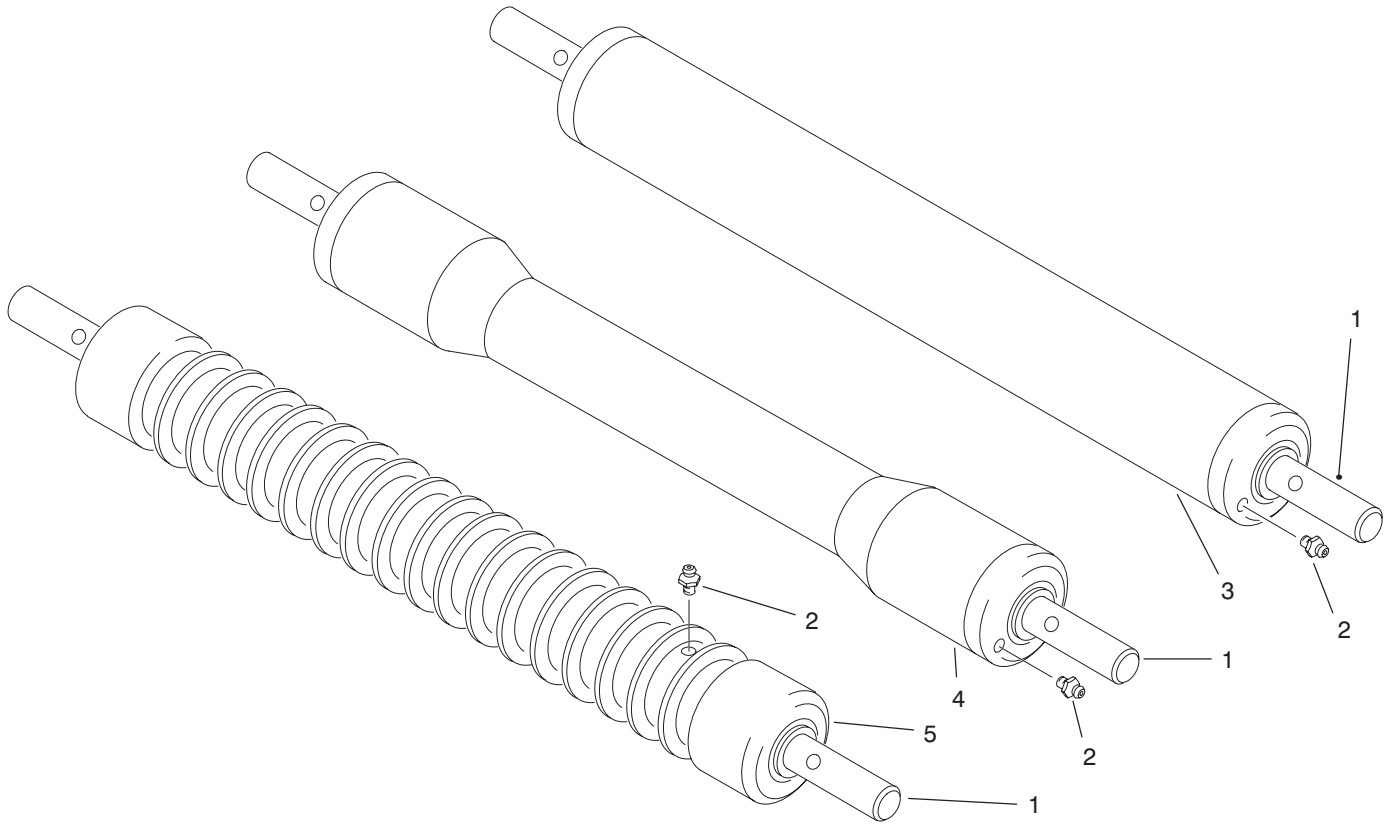
Ref. No.	Part No.	Description	No. Used
49	321-3	Screw - Cap Hex. Hd.	1
50	94-5860	Module - Interlock	1
50	94-3431	Module - Interlock (Europe)	1
51	53-4420	Decal - Fuel	1
51	93-9886	Decal - Fuel (Europe)	1
51	93-9886	Decal - Fuel (Japan)	1
52	32113-012	Screw - HH (Europe)	4
53	3256-22	Washer - Flat	1



T-1997-2

## HANDLE ASSEMBLY

Ref. No.	Part No.	Description	No. Used	Ref. No.	Part No.	Description	No. Used
1	93-9023	Cable - Throttle	1	26	3296-29	Nut - Lock	4
2	3-5787	Spring	1	27	93-6085	Decal - Throttle	1
3	3296-56	Nut - Lock	1	28	93-6019	Bracket - Clutch	1
4	93-6016	Washer - Retaining	1	29	65-8970	Knob - Black	1
5	66-2921	Washer - Friction	2	31	93-6084	Decal - Console	1
6	93-6017	Lever - Throttle	1	31	93-7347	Decal - Console (Europe)	1
7	322-9	Screw - Cap Hex. Hd.	4	31	94-6312	Decal - Console (Japan)	1
8	93-6018	Bracket - Skid, Clutch	1	32	93-6036	Console	1
9	321-8	Screw - Cap Hex. Hd.	1	33	323-34	Screw - Cap Hex. Hd.	2
10	93-6046	Bracket - Console RH	1	34	3253-21	Washer - Spring Lock	2
11	3296-42	Nut - Lock	2	35	3256-24	Washer - Flat	2
12	93-6081	Cable - Clutch	1	36	93-6000	Pin - Handle Pivot	2
13	93-6083	Screw	10	37	3296-28	Nut - Lock Insert	2
14	11-9030	Bolt - Shoulder	2	38	93-6001	Handle	1
15	93-6082	Cable - Brake	1	39	256-206	Bushing	2
16	93-6021	Bracket - Skid, Brake	1	40	3290-378	Tie - Cable	4
17	93-6022	Bracket - Brake	1	41	93-9009	Bail Asm. (Europe) (Incl. Ref. #47)	1
18	93-6058	Lever - Brake	1	42	93-6079	Spacer (Europe)	2
19	93-6047	Bracket - Console LH	1	43	93-6078	Bracket - Switch (Europe)	1
20	65-8971	Knob - Red	1	44	87-5490	Switch (Europe) (Incl. Ref. #45)	1
21	3210-7	Screw - Cap Hex. Hd.	2	45	3218-20	Nut - Hex. Jam (Europe)	2
22	3253-4	Washer - Spring Lock	2	46	11-9030	Bolt - Shoulder (Europe)	4
23	3256-23	Washer - Flat	2	47	93-9008	Decal - Bail	1
24	88-7450	Spacer	2				
25	93-6057	Lever - Clutch	1				



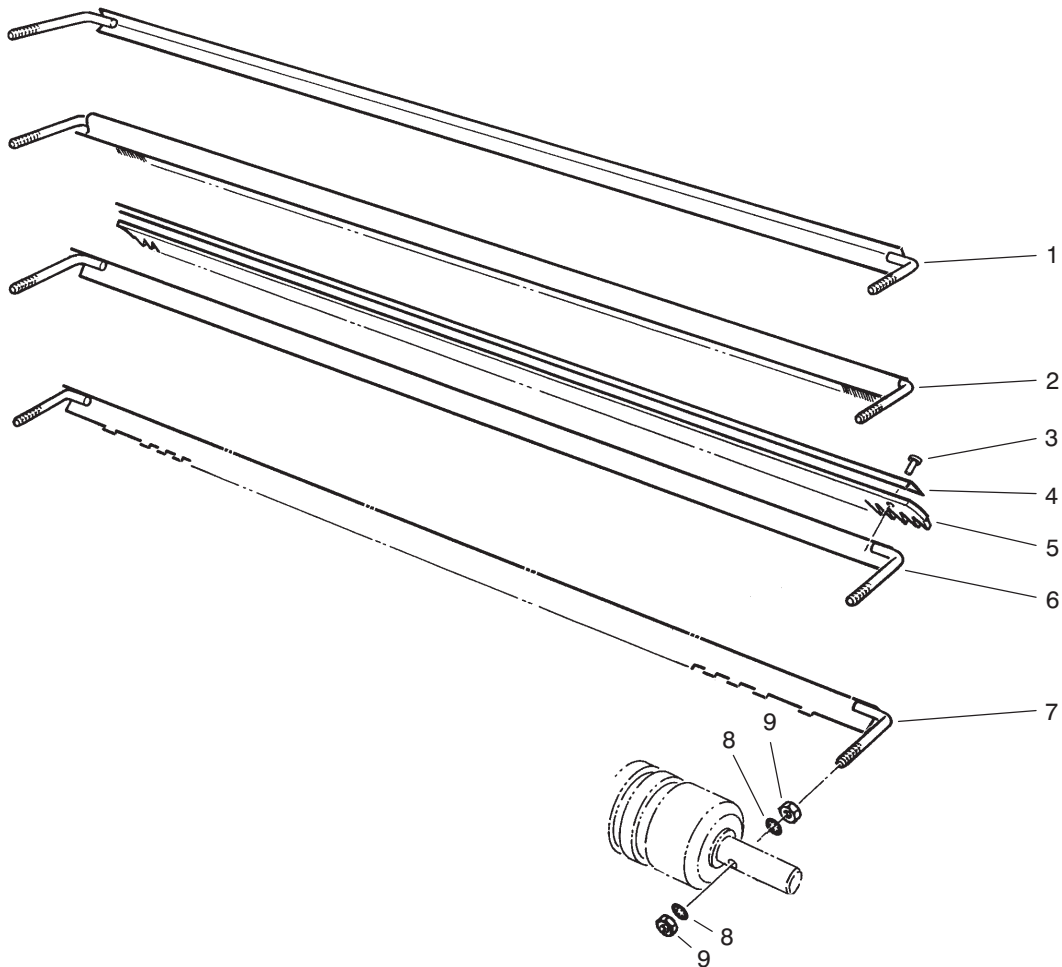
T-0956A

## CUTTING UNIT ROLLER OPTIONS

Ref. No.	Part No.	Description	No. Used
1	52-3180	Bearing – Roller	2
2	302-5	Fitting – Grease	2
3	52-3170	Assembly – Roller (Incl. Ref. #1 & 2)	1
4	52-3590	Assembly – Swaged Roller (Incl. Ref. #1 & 2)	1

Ref. No.	Part No.	Description	No. Used
5	71-1550	Assembly – Wiehle Roller Cast Iron (Incl. Ref. #1 & 2)	1
*	04118	Wiehle Roller – Cast Iron (Carton of 1)	1

\*Not Illustrated



T-1998

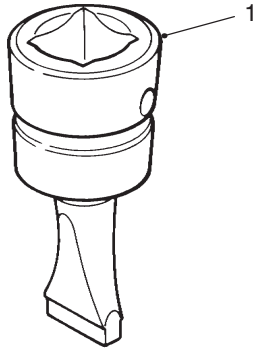
### SCRAPER OPTIONS

Ref. No.	Part No.	Description	No. Used
1	65-8360	Scraper - Smooth	1
2	33-1000	Scraper - Brush	1
3	3295-15	Rivet	11
4	8-2520	Support - Comb	1
5	8-2530	Comb - Urethane	1

Ref. No.	Part No.	Description	No. Used
6	11-0070	Assembly - Comb, Scraper (Incl. Ref. #3-5)	1
7	65-8340	Scraper - Wiehle Roller	1
8	3254-8	Washer - Lock I.T.L.W.	4
9	3219-1	Nut-Hex	4

# SPECIAL TOOLS

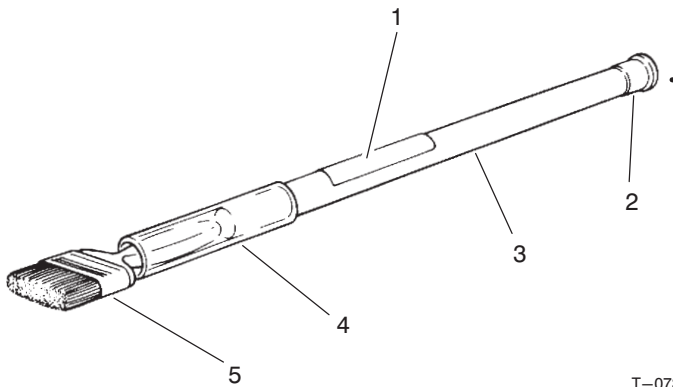
## BEDKNIFE SCREW TOOL NO. \*TOR510880



T-0729

Ref. No.	Part No.	Description	No. Used
1		Tool – Bedknife Screw	1

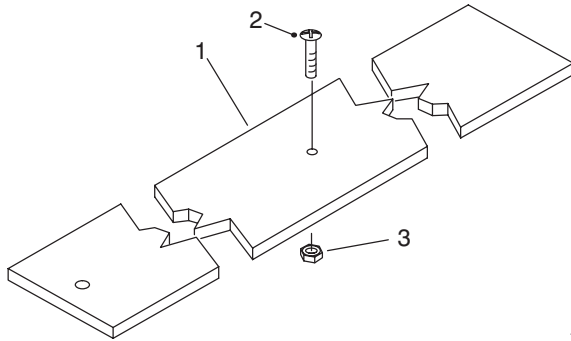
## BACKLAPPING BRUSH ASSEMBLY NO. \*TOR299100



T-0731

Ref. No.	Part No.	Description	No. Used
1	12-9140	Decal	1
2	2410-18	Plug	1
3	29-9080	Handle	1
4	29-9090	Hose – Handle	1
5	36-4310	Brush	1

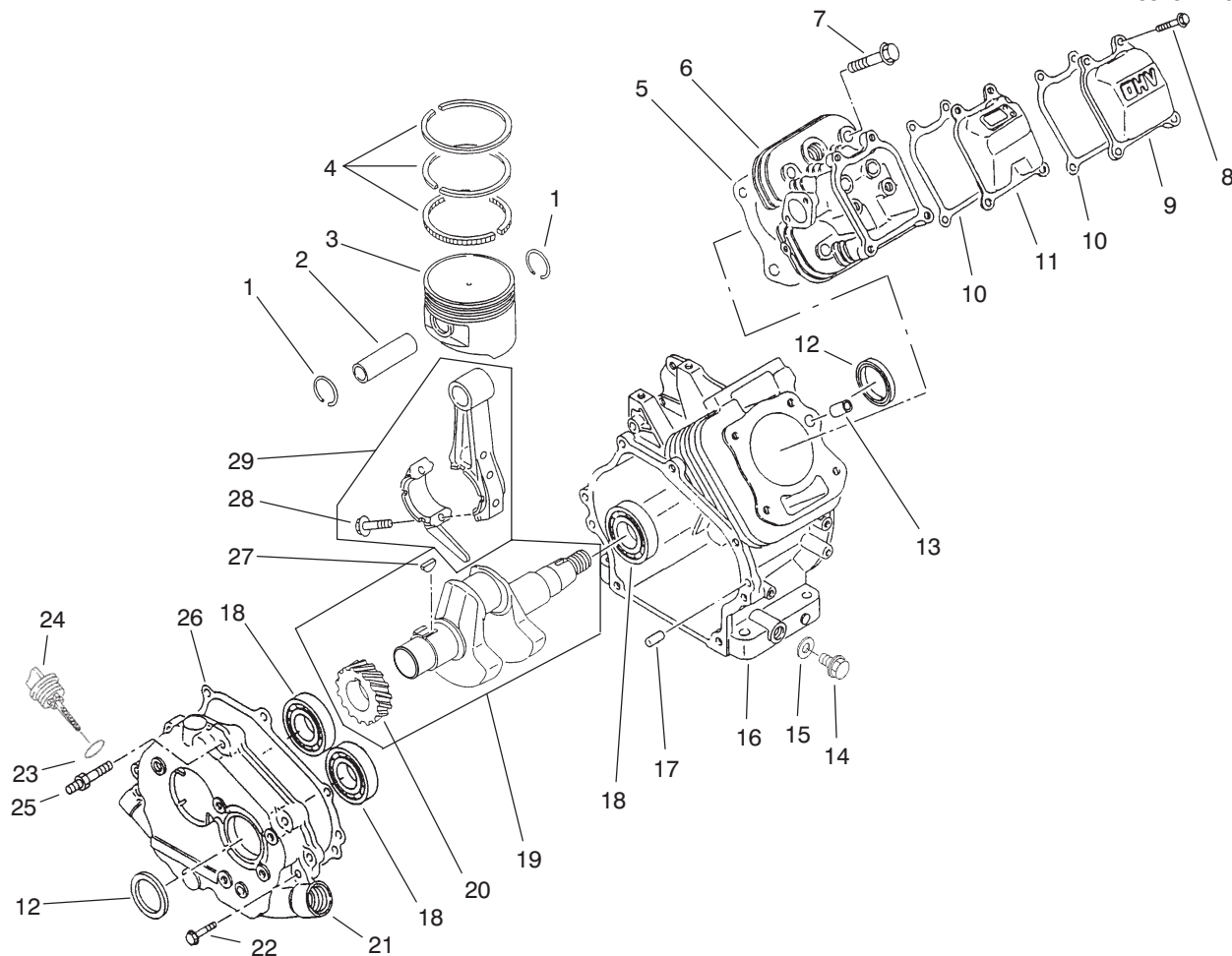
## HEIGHT-OF-CUT BAR ASSEMBLY NO. 13-8199



T-1763

Ref. No.	Part No.	Description	No. Used
1	65-8320	Bar	1
2	32122-22	Screw – Phill. Truss Hd.	1
3	3219-14	Nut	1

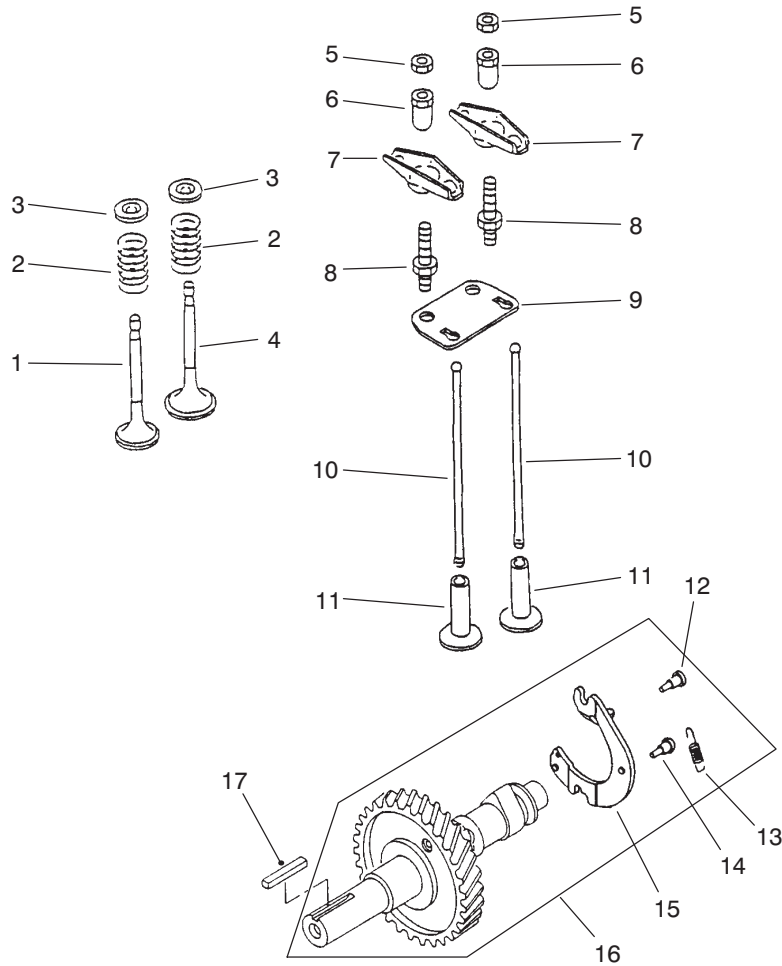
\*Obtain these items directly from OTC 2013 4th St. Owatonna, MN. 55060 1-800-533-0492  
(in Minnesota and Canada 1-507-455-7050) Fax. 507-455-7011.



T-1623

## ENGINE CRANKCASE ASSEMBLY

Ref. No.	Part No.	Description	No. Used	Ref. No.	Part No.	Description	No. Used
1	93-8500	Ring - Retaining	2	16	93-8515	Crankcase	1
2	93-8501	Pin - Piston	1	17	93-8516	Pin	2
3	93-8502	Piston	1	18	93-8517	Bearing - Ball	3
*	94-6836	Piston (Oversized)	1	19	93-8518	Asm. - Crankshaft (Incl. Ref. #20 & 27)	1
4	93-8503	Piston Ring Set	1	20	94-9043	Gear - Helical	1
*	94-6837	Piston Ring Set (Oversized)	1	21	93-8520	Cover - Crankcase	1
5	93-8504	Gasket - Head	1	22	93-8521	Bolt - Flanged	7
6	93-8505	Head - Cylinder	1	23	94-9041	Seal - O-Ring	2
7	93-8506	Bolt - Flanged	4	24	93-8523	Cap - Oil Filler	2
8	94-6838	Bolt - Flanged	4	25	93-8524	Stud	1
9	93-8508	Case - Rocker	1	26	93-8525	Gasket - Crankcase	1
10	93-8509	Gasket - Rocker	2	27	93-8526	Key	1
11	93-8510	Breather	1	28	93-8527	Bolt - Rod	2
12	93-8511	Seal - Oil	2	29	93-8528	Asm. - Connecting Rod (Incl. Ref. #28)	1
13	93-8512	Pin	2				
14	93-8513	Plug - Drain	2				
15	93-8514	Gasket - Drain Plug	2				

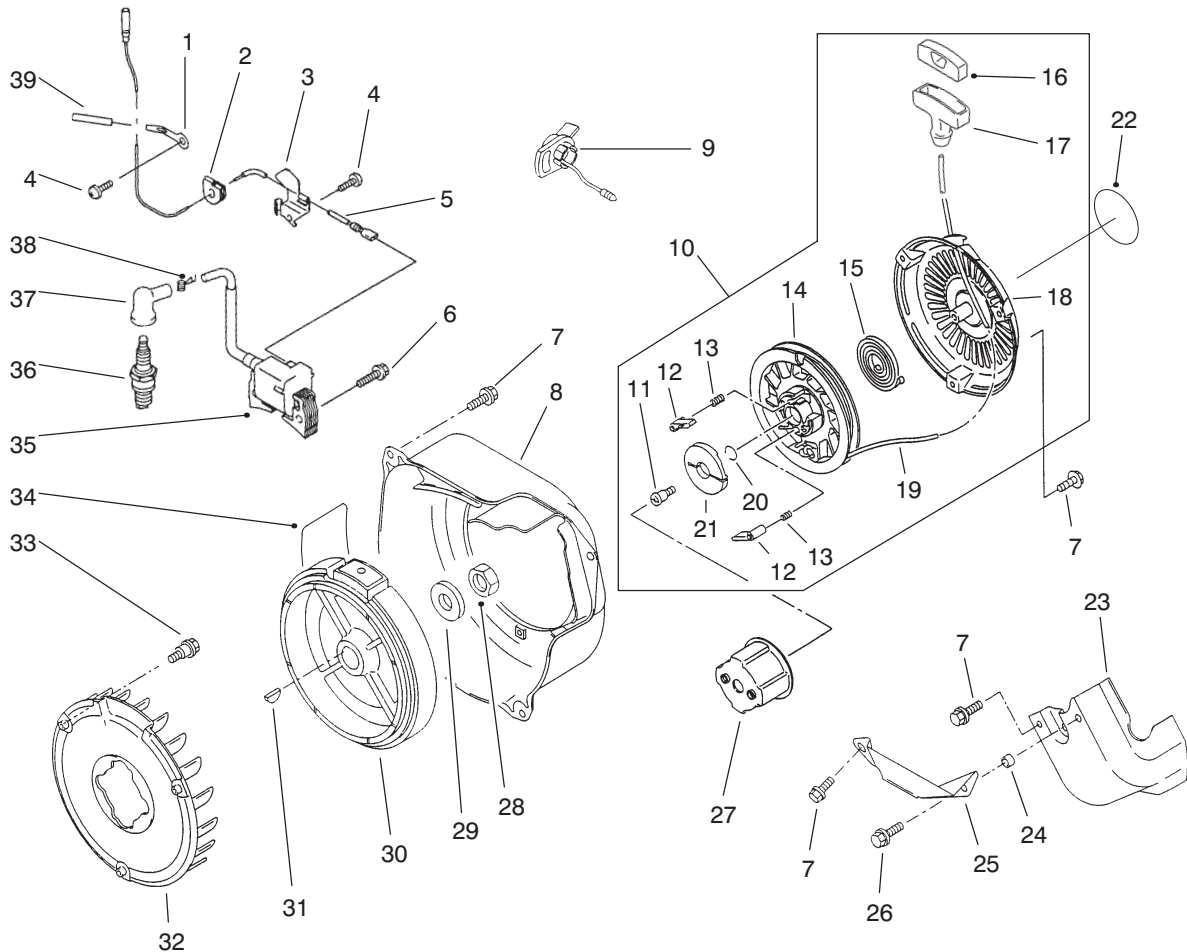


T-1624

## ENGINE CAMSHAFT & VALVES ASSEMBLY

Ref. No.	Part No.	Description	No. Used
1	93-8529	Valve - Exhaust	1
2	93-8530	Spring - Valve	2
3	93-8531	Retainer - Spring	2
4	93-8532	Valve - Intake	1
5	93-8533	Nut	2
6	93-8534	Nut	2
7	93-8535	Arm - Rocker	2
8	93-8536	Bolt	2
9	93-8537	Guide	1

Ref. No.	Part No.	Description	No. Used
10	93-8538	Rod - Push	2
11	93-8539	Tappet	2
12	93-8540	Pin	2
13	93-8541	Spring	1
14	93-8542	Pin	1
15	93-8543	Decompressor	1
16	93-8544	Asm. - Camshaft (Incl. Ref. #12-15)	1
17	93-8545	Key	1

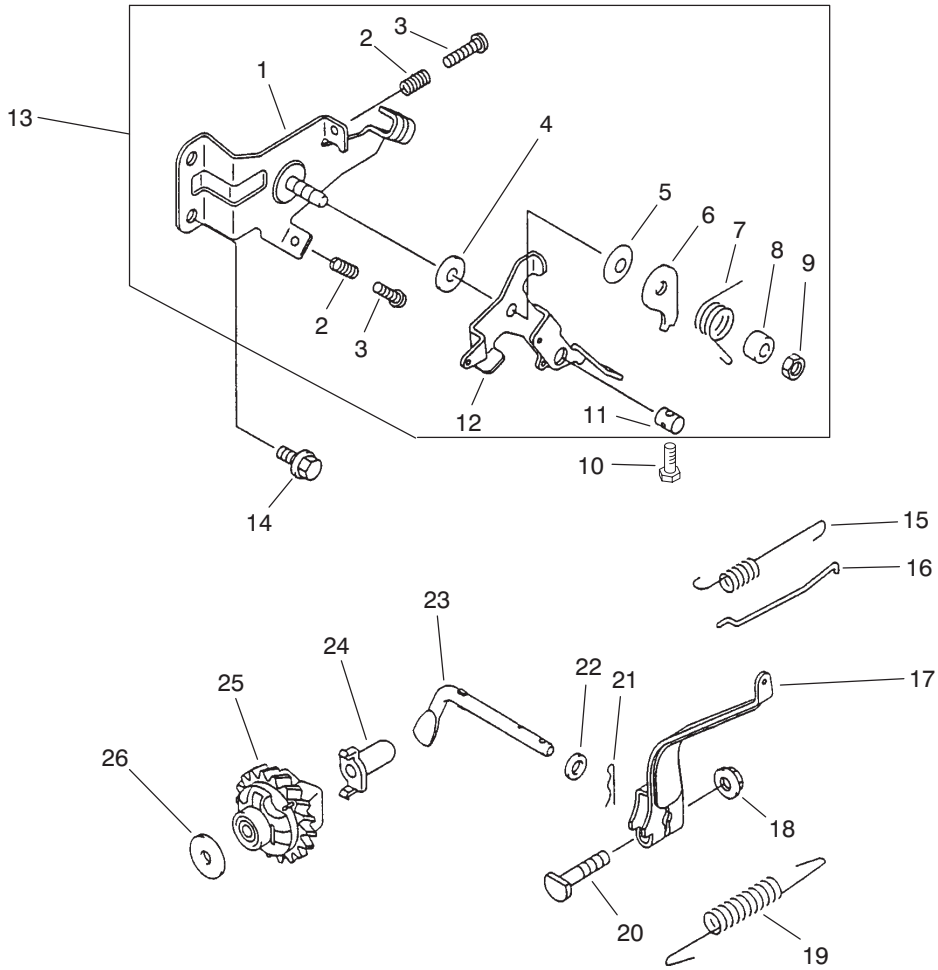


T-1625

## ENGINE IGNITION ASSEMBLY

Ref. No.	Part No.	Description	No. Used
1	94-9039	Clamp	1
2	93-8582	Grommet	1
3	93-8583	Clamp	1
4	93-8549	Screw	2
5	94-9038	Lead - Wire	1
6	93-8548	Bolt - Flanged	2
7	93-8550	Bolt - Flanged	10
8	94-9047	Housing - Fan	1
9	93-8546	Switch	1
10	93-8552	Asm. - Recoil Starter (Incl. Ref. #11-21)	1
11	93-8553	Screw	1
12	93-8554	Pawl - Recoil	2
13	93-8555	Spring - Return	2
14	93-8556	Reel - Recoil	1
15	93-8557	Spring	1
16	94-9044	Cap - Grip	1
17	94-9045	Grip	1
18	94-9046	Case - Recoil	1
19	93-8560	Rope	1
20	93-8561	Ring - Retaining	1

Ref. No.	Part No.	Description	No. Used
21	93-8562	Guide - Pawl	1
22	94-9027	Decal - Recoil	1
23	93-8563	Shroud - Engine	1
24	93-8564	Collar	1
25	93-8565	Shroud - Engine	1
26	93-8566	Bolt - Flanged	1
27	93-8567	Pulley - Recoil	1
28	93-8568	Nut	1
29	93-8569	Washer	1
30	94-9026	Flywheel	1
31	93-8571	Key	1
32	93-8572	Fan	1
33	94-6840	Bolt - Flanged	3
34	93-8689	Decal - Instruction	1
35	94-9031	Coil - Ignition	1
36	93-8584	Plug - Spark (NGK BPR5ES)	1
37	93-8585	Cap - Spark Plug	1
38	94-9049	Terminal	1
39	94-9040	Tube	1

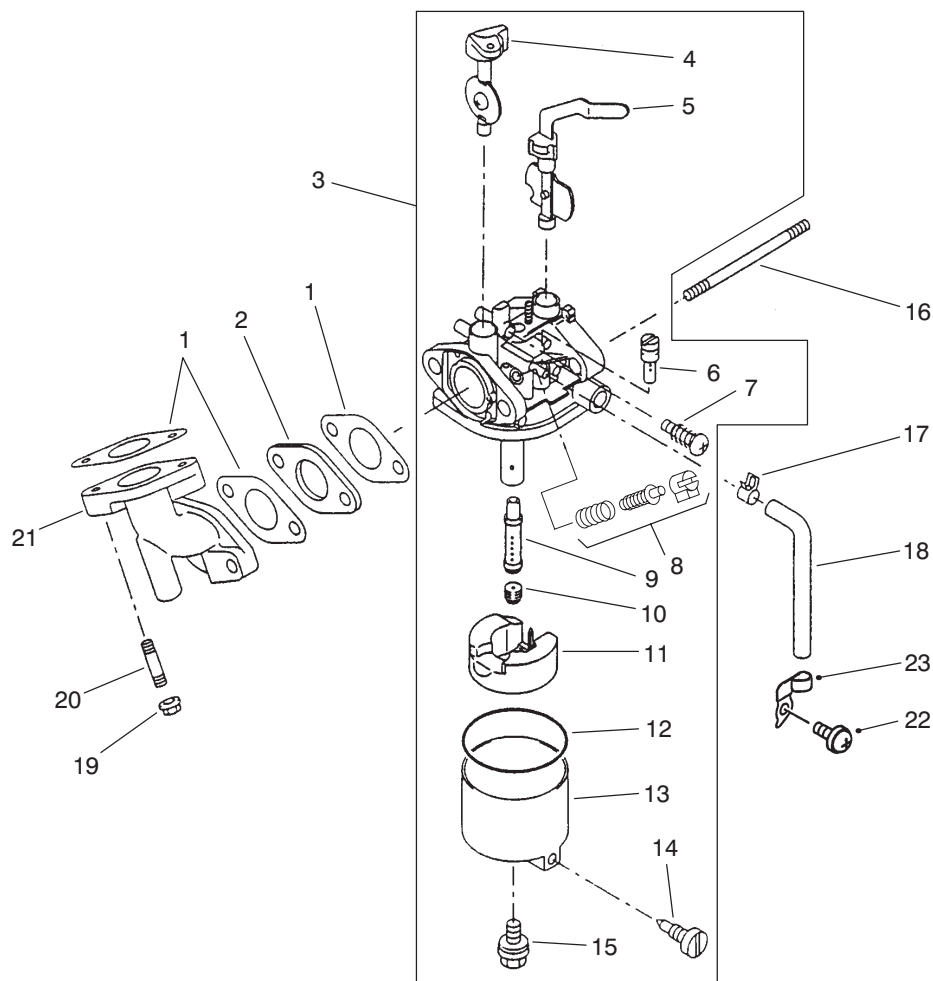


T-1618A

## ENGINE GOVERNOR ASSEMBLY

Ref. No.	Part No.	Description	No. Used
1	93-8587	Panel - Control	1
2	93-8588	Spring	2
3	93-8589	Bolt	2
4	93-8590	Washer	1
5	93-8591	Spring	1
6	93-8592	Plate	1
7	93-8593	Spring	1
8	93-8594	Spacer	1
9	93-8595	Nut	1
10	94-9015	Screw - HH	1
11	93-8597	Nut	1
12	93-8598	Lever	1
13	93-8599	Asm. - Control Panel (Incl. Ref. #1-12)	1

Ref. No.	Part No.	Description	No. Used
14	93-8600	Bolt - Flanged	2
15	93-8601	Spring	1
16	93-8602	Rod - Governor	1
17	93-8603	Arm - Governor	1
18	93-8631	Nut	1
19	94-9030	Spring - Governor	1
20	93-8606	Bolt	1
21	93-8607	Pin - Snap	1
22	93-8608	Washer	1
23	93-8609	Arm - Pivot	1
24	93-8610	Sleeve	1
25	94-6841	Asm. - Governor	1
26	94-6842	Washer	1

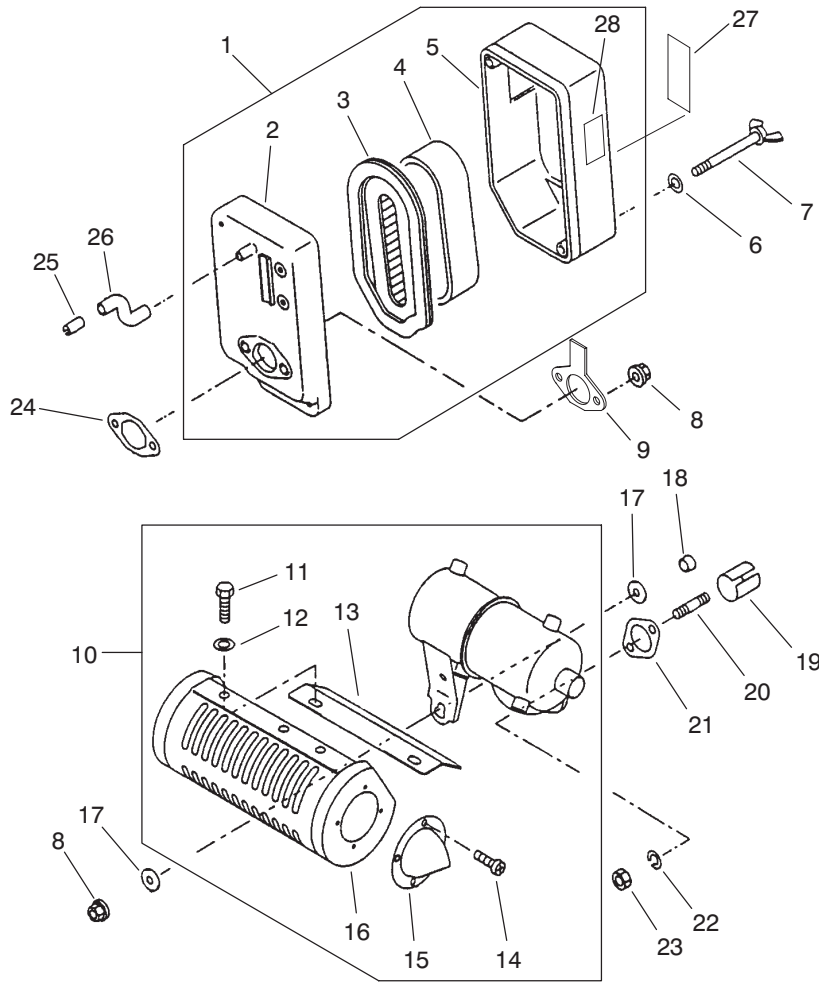


T-1619A

## ENGINE CARBURETOR ASSEMBLY

Ref. No.	Part No.	Description	No. Used	Ref. No.	Part No.	Description	No. Used
1	93-8613	Gasket - Carburetor	3	13	93-8625	Asm. - Float Chamber (Incl. Ref. #14)	1
2	94-9048	Insulator	1	14	93-8626	Asm. - Screw	1
3	94-9032	Asm. - Carburetor (Incl. Ref. #4-15)	1	15	93-8627	Bolt	1
4	94-9033	Valve - Throttle	1	16	93-8628	Bolt - Stud	2
5	93-8617	Valve - Choke	1	17	93-8629	Clamp	1
6	94-9037	Jet - Pilot #40	1	18	93-8630	Tube	1
7	93-8619	Asm. - Screw	1	19	93-8631	Nut	2
†8		Limiter	1	20	93-8632	Bolt - Stud	2
9	94-9035	Nozzle - Main	1	21	93-8633	Pipe - Intake	1
10	94-9036	Jet - Main #65	1	22	94-6845	Screw	1
11	94-6844	Asm. - Float	1	23	94-6846	Clamp	1
12	93-8624	Gasket	1				

† Available only thru Authorized Toro or Kawasaki Dealer.



T-1620A

## ENGINE AIR FILTER & MUFFLER ASSEMBLY

Ref. No.	Part No.	Description	No. Used
1	93-8634	Asm. - Air Filter (Incl. Ref. #2-5)	1
2	93-8635	Case - Air Filter	1
3	93-8636	Element - Air Filter	1
4	93-8637	Element - Air Filter	1
5	93-8638	Cap - Air Filter	1
6	93-8639	Washer	22
7	93-8640	Bolt	2
8	93-8641	Nut	3
9	93-8642	Plate - Air Filter	1
10	93-8643	Asm. - Muffler (Incl. Ref. #11-16)	1
11	93-8644	Bolt	4
12	93-8645	Washer	4
13	93-8646	Cover - Muffler	1

Ref. No.	Part No.	Description	No. Used
14	93-8647	Screw	4
15	93-8648	Pipe - Tail	1
16	93-8649	Cover - Muffler	1
17	93-8650	Washer	2
18	93-8651	Collar	1
19	93-8652	Pipe - Exhaust	1
20	94-6848	Bolt - Stud	2
21	93-8654	Gasket - Muffler	1
22	93-8655	Washer - Spring	2
23	93-8656	Nut - Hex.	2
24	93-8657	Gasket - Air Filter	1
25	93-8658	Pipe	1
26	93-8659	Tube	1
27	93-8690	Decal - Maintenance	1
28	93-8687	Decal - Choke	1



# TORO PART NUMBER INDEX

Part No.	Description	Pg. No.	Ref. No.	Qty.	Part No.	Description	Pg. No.	Ref. No.	Qty.
04118	Wihle Roller – Cast Iron	14	*	1	65-7660	Decal – Reel Engagement	4	56	1
774881	Housing Differential Carrier	8	1	1	65-8260	Spacer – Engine Shaft	11	12	1
774882	Housing Differential Carrier	8	1A	1	65-8270	Washer	11	39	1
778068	Gear Pinion	8	5	2	65-8290	Standoff – Cover	3	36	2
778221	Gear Bevel	8	4	2	65-8320	Bar	16	1	1
780001	Washer	8	8	2	65-8340	Scraper – Wihle Roller	15	7	1
780096	Washer Thrust	8	7	2	65-8360	Scraper – Smooth	15	1	1
780140	Bearing Needle	8	13	4	65-8570	Rod – Grass Catcher	1	26	2
786040	Pin Drive	8	6	1	65-8610	Lever – Brake	9	19	1
788042	Seal Oil	8	14	2	65-8640	Housing – Bearing	6	27	1
792093	Screw Flanged Hex Hd.	8	11	4	65-8640	Housing – Bearing	3	34	1
792125	Ring – Retaining (Pkg. of 2)	8	10	4	65-8670	Adjuster – Frame	2	39	2
3-5787	Spring	13	2	1	65-8680	Washer – Thrust	1	2	2
8-2520	Support – Comb	15	4	1	65-8690	Screw – Adjusting	2	41	2
8-2530	Comb – Urethane	15	5	1	65-8700	Band – Brake	9	25	1
11-0070	Assembly – Comb, Scraper	15	6	1	65-8710	Flangette	6	22	2
11-9030	Bolt – Shoulder	11	13	3	65-8720	Closure	6	29	2
11-9030	Bolt – Shoulder	13	14	2	65-8730	Clamp – Bearing	6	30	4
11-9030	Bolt – Shoulder	9	14	1	65-8770	Bushing	11	10	4
11-9030	Bolt – Shoulder (Europe)	13	46	4	65-8910	Pulley – Countershaft	9	32	1
12-9140	Decal	16	1	1	65-8960	Boot – Clutch	3	28	1
29-9080	Handle	16	3	1	65-8970	Knob – Black	13	29	1
29-9090	Hose – Handle	16	4	1	65-8971	Knob – Red	13	20	1
33-1000	Scraper – Brush	15	2	1	65-9080	Belt	9	35	1
36-4310	Brush	16	5	1	65-9120	Pulley – Differential	7	15	1
36-7260	Bar – Cutoff	5	7	1	66-2921	Washer – Friction	13	5	2
38-7820	Bearing – Ball	6	41	2	67-5360	Decal – Danger	11	26	1
38-7820	Bearing – Ball	12	44	2	71-1550	Assembly – Wihle Roller	14	5	1
38-7820	Bearing – Ball	3	44	1	83-2560	Decal – Hot (Japan)	11	18	1
38-7820	Bearing – Ball	9	45	2	84-2940	Decal – Warning (Japan)	2	35	2
48-7700	Screw – Cap Hex. Hd.	11	22	7	84-6560	Decal – Warning (Japan)	5	9	1
48-9460	Screw – Cap Hex. Hd.	11	40	1	84-7280	Decal – Danger (Japan)	11	26	1
52-2860	Washer	5	20	4	86-7130	Spacer	6	10	2
52-2890	Bushing	2	42	2	86-7130	Spacer – Short	9	26	1
52-2900	Washer – Poly	5	14	4	86-7140	Spacer – Long	9	31	1
52-3170	Assembly – Roller	14	3	1	87-5490	Switch (Europe)	13	44	1
52-3180	Bearing	2	28	2	87-5490	Switch	11	16	1
52-3180	Bearing – Roller	14	1	2	88-6790	Wihle Roller Assembly	1	27	1
52-3590	Assembly – Swaged Roller	14	4	1	88-7090	Spacer – LH	2	*	1
53-4420	Decal – Fuel	12	51	1	88-7100	Spacer – RH	2	46	1
53-4860	Decal – Safety	2	47	1	88-7110	Rod – Frame Support	2	38	1
55-4300	Decal – Warning	2	35	2	88-7150	Key – Square	3	10	2
57-4910	Screw – Special	5	13	13	88-7170	Lever – Clutch	3	24	1
62-5070	Decal – Warning	5	9	1	88-7190	Spacer – Pulley Support	6	44	2
63-8440	Decal – Hot	11	18	1	88-7190	Spacer – Pulley Support	4	59	1
63-9510	Bushing Assembly	2	43	2	88-7200	Washer – Flat	6	43	2
65-6200	Belt – Reel Drive	3	41	1	88-7200	Washer – Flat	3	46	1
65-6210	Belt	6	12	2	88-7200	Washer – Flat	9	46	1
65-6220	Cover – Bearing	6	17	1	88-7230	Housing – Countershaft	9	1	1
65-6270	Bolt – Bedbar	5	15	2	88-7240	Cover – Box Front	9	37	1
65-6290	Spring – Clutch Detent	3	20	1	88-7250	Cover – Box Rear	9	38	1
65-6360	Support – Spring	1	5	2	88-7350	Spacer – Pulley Support	12	42	1
65-6380	Collar – Thrust	1	3	2	88-7380	Spacer – Pulley Support	10	57	1
65-6400	Spring – Compression	1	4	2	88-7450	Spacer	13	24	2
65-6450	Bracket – Shield LH	5	2	1	88-7470	Housing – LH	6	4	1
65-6460	Bracket – Shield RH	5	3	1	88-7490	Housing – RH	6	*	1
65-6520	Spacer – Bearing	7	5	1	88-7510	Shaft – Drum RH	7	12	1
65-6530	Spacer – Seal	7	6	1	88-7520	Shaft – Drum LH	7	11	1
65-6570	Washer	6	15	2	88-7530	Spacer	6	1	2
65-6590	Flangette	6	20	2	88-7540	Washer – Backup	6	2	2
65-6660	Pulley	6	13	2	88-7550	Pulley – RH	6	*	1
65-6700	Flangette	9	6	1	88-7560	Pulley – LH	6	3	1
65-6710	Flangette	9	8	1	88-7620	Decal – Danger	11	19	1
65-6720	Plate – Screw	9	5	1	88-7670	Base – Engine	1	6	1
65-6760	Housing – Bearing	9	27	1	88-7680	Cover – Drum Belt LH	6	36	1
65-6800	Boot – Differential	9	43	1	88-7690	Cover – Drum Belt RH	6	*	1
65-6810	Support – Brake	9	21	2	88-7700	Cover – Reel Drive	3	50	1
65-6850	Key	9	33	1	88-7710	Seal – Countershaft	9	34	1
65-6901	Strip – Cover Seal	9	50	1	88-7720	Washer – Wave	3	7	1
65-6902	Strip – Cover Seal	10	51	1	88-7770	Strip – Seal Front	3	51	1
65-6903	Strip – Cover Seal	10	52	1	88-7780	Strip – Seal Rear	3	52	1
65-6940	Clutch – Jaw Driver	3	11	1	88-7790	Strip – Seal Upper	4	53	1
65-6970	Seal – Felt	3	18	1	88-7800	Strip – Seal Lower	4	54	1
65-7131	Trim – Groomer Arm Cover	3	31	1	88-7810	Seal Strip – Drum Cover	6	37	2
65-7190	Cover – Groomer Arm	3	30	1	88-7830	Clutch & Pulley Assembly	3	12	1
65-7230	Basket – Grass	7	19	1	88-7840	Pulley & Drive Assembly	3	42	1
65-7510	Grommet – Handle	1	12	2	88-7850	Idler Pulley Assembly	6	40	2

\*Not Illustrated

# TORO PART NUMBER INDEX (Cont.)

Part No.	Description	Pg. Ref. No. No. Qty.	Part No.	Description	Pg. Ref. No. No. Qty.
88-7850	Idler Pulley Assembly	3 43 1	93-7289	Decal - Service (Norwegian)	5 10 1
88-7860	Spacer	3 25 1	93-7290	Decal - Service	5 10 1
88-7870	Idler Pulley Assembly	9 44 1	93-7291	Decal - Service (Swedish)	5 10 1
88-7880	Bearing	6 21 2	93-7346	Decal - Reel Engagement	4 56 1
88-7890	Idler Pulley Assembly	12 43 1	93-7347	Decal - Console (Europe)	13 31 1
88-7960	Bracket - Throttle Cable	11 27 1	93-7348	Decal - Danger (Europe)	11 19 1
88-7970	Clip	10 59 1	93-7842	Decal - Safety (Japan)	2 47 1
88-8950	Decal - Warning	2 33 3	93-8064	Decal - Warning (Europe)	5 9 1
92-4813	Decal - Danger (Japan)	11 19 1	93-8069	Decal - Hot (Europe)	11 18 1
92-4817	Decal - Reel Engagement	4 56 1	93-8500	Ring - Retaining	17 1 2
92-7302	Nut - Bearing Lock	6 24 1	93-8501	Pin - Piston	17 2 1
92-8013	Housing - Clutch	3 1 1	93-8502	Piston	17 3 1
92-8914	Bolt - Tapered Face	2 36 4	93-8503	Piston Ring Set	17 4 1
92-9212	Pulley - Input Shaft	9 16 1	93-8504	Gasket - Head	17 5 1
92-9216	Pulley - Input Drive	11 11 1	93-8505	Head - Cylinder	17 6 1
92-9218	V-Belt, Matched Set	11 38 1	93-8506	Bolt - Flanged	17 7 4
93-1448	Cover Bracket	10 53 1	93-8508	Case - Rocker	17 9 1
93-4262	Bedknife - Micro	5 * 1	93-8509	Gasket - Rocker	17 10 2
93-4263	Bedknife - Tournament	5 * 1	93-8510	Breather	17 11 1
93-4264	Bedknife - 1/8"	5 19 1	93-8511	Seal - Oil	17 12 2
93-6000	Pin - Handle Pivot	13 36 2	93-8512	Pin	17 13 2
93-6001	Handle	13 38 1	93-8513	Plug - Drain	17 14 2
93-6003	Lever - Clutch	11 35 1	93-8514	Gasket - Drain Plug	17 15 2
93-6011	Spring - Torsion	11 14 1	93-8515	Crankcase	17 16 1
93-6012	Spring - Torsion, Clutch	11 32 1	93-8516	Pin	17 17 2
93-6013	Shield - Belt	11 33 1	93-8517	Bearing - Ball	17 18 3
93-6014	Lever	11 9 1	93-8518	Asm. - Crankshaft	17 19 1
93-6015	Bracket - Clutch	11 17 1	93-8520	Cover - Crankcase	17 21 1
93-6016	Washer - Retaining	13 4 1	93-8521	Bolt - Flanged	17 22 7
93-6017	Lever - Throttle	13 6 1	93-8523	Cap - Oil Filler	17 24 2
93-6018	Bracket - Skid, Clutch	13 8 1	93-8524	Stud	17 25 1
93-6019	Bracket - Clutch	13 28 1	93-8525	Gasket - Crankcase	17 26 1
93-6021	Bracket - Skid, Brake	13 16 1	93-8526	Key	17 27 1
93-6022	Bracket - Brake	13 17 1	93-8527	Bolt - Rod	17 28 2
93-6024	Bushing - Handle Support	1 14 2	93-8528	Asm. - Connecting Rod	17 29 1
93-6025	Rear Frame.	1 10 1	93-8529	Valve - Exhaust	18 1 1
93-6029	Pin - Ring	1 16 2	93-8530	Spring - Valve	18 2 2
93-6036	Console	13 32 1	93-8531	Retainer - Spring	18 3 2
93-6037	Arm - Handle RH	1 * 1	93-8532	Valve - Intake	18 4 1
93-6038	Arm - Handle LH	1 13 1	93-8533	Nut	18 5 2
93-6046	Bracket - Console RH	13 10 1	93-8534	Nut	18 6 2
93-6047	Bracket - Console LH	13 19 1	93-8535	Arm - Rocker	18 7 2
93-6048	Bracket - Height of Cut, RH	1 * 1	93-8536	Bolt	18 8 2
93-6049	Bracket - Height of Cut, LH	1 25 1	93-8537	Guide	18 9 1
93-6051	Screw - Height of Cut	1 20 2	93-8538	Rod - Push	18 10 2
93-6053	Bedbar	5 12 1	93-8539	Tappet	18 11 2
93-6055	Differential Assembly	7 14 1	93-8540	Pin	18 12 2
93-6056	Shaft - Power	3 9 1	93-8541	Spring	18 13 1
93-6057	Lever - Clutch	13 25 1	93-8542	Pin	18 14 1
93-6058	Lever - Brake	13 18 1	93-8543	Decompressor	18 15 1
93-6064	Seal - Grass Catcher	2 34 1	93-8544	Asm. - Camshaft	18 16 1
93-6068	Front Frame Tube Assembly	2 37 1	93-8545	Key	18 17 1
93-6069	Grass Shield Assembly	5 1 1	93-8546	Switch	19 9 1
93-6073	Retainer	11 4 1	93-8548	Bolt - Flanged	19 6 2
93-6074	Stud	11 3 1	93-8549	Screw	19 4 2
93-6078	Bracket - Switch (Europe)	13 43 1	93-8550	Bolt - Flanged	19 7 10
93-6079	Spacer (Europe)	13 42 2	93-8552	Asm. - Recoil Starter	19 10 1
93-6081	Cable - Clutch	13 12 1	93-8553	Screw	19 11 1
93-6082	Cable - Brake	13 15 1	93-8554	Pawl - Recoil	19 12 2
93-6083	Screw	13 13 10	93-8555	Spring - Return	19 13 2
93-6084	Decal - Console	13 31 1	93-8556	Reel - Recoil	19 14 1
93-6085	Decal - Throttle	13 27 1	93-8557	Spring	19 15 1
93-6087	Reel Assembly - 8 Blade	5 * 1	93-8560	Rope	19 19 1
93-6090	Arm - Height of Cut	1 24 2	93-8561	Ring - Retaining	19 20 1
93-6092	Guard - Muffler (Europe)	12 47 1	93-8562	Guide - Pawl	19 21 1
93-6093	Side Plate Assembly RH	1 1 1	93-8563	Shroud - Engine	19 23 1
93-6094	Side Plate Assembly LH	1 19 1	93-8564	Collar	19 24 1
93-6097	Reel Assembly - 11 Blade	5 11 1	93-8565	Shroud - Engine	19 25 1
93-6098	Decal - Service	5 10 1	93-8566	Bolt - Flanged	19 26 1
93-6099	Washer	11 31 1	93-8567	Pulley - Recoil	19 27 1
93-6696	Decal - Warning (Europe)	2 35 2	93-8568	Nut	19 28 1
93-7252	Decal - CE Mark (Europe)	2 47 1	93-8569	Washer	19 29 1
93-7273	Decal - Danger (Europe)	11 26 1	93-8571	Key	19 31 1
93-7285	Decal - Service (Danish)	5 10 1	93-8572	Fan	19 32 1
93-7286	Decal - Service (Dutch)	5 10 1	93-8582	Grommet	19 2 1
93-7287	Decal - Service (Finnish)	5 10 1	93-8583	Clamp	19 3 1
93-7288	Decal - Service (Italian)	5 10 1	93-8584	Plug - Spark	19 36 1

\*Not Illustrated

# TORO PART NUMBER INDEX (Cont.)

Part No.	Description	Pg. No.	Ref. No.	Qty.	Part No.	Description	Pg. No.	Ref. No.	Qty.
93-8585	Cap - Spark Plug	19	37	1	93-8678	Bracket - Tank	23	19	1
93-8587	Panel - Control	20	1	1	93-8680	Bolt - Flanged	23	21	2
93-8588	Spring	20	2	2	93-8681	Bracket	23	22	1
93-8589	Bolt	20	3	2	93-8682	Tank - Fuel	23	23	1
93-8590	Washer	20	4	1	93-8683	Bolt	23	24	4
93-8591	Spring	20	5	1	93-8685	Gauge - Fuel	23	26	1
93-8592	Plate	20	6	1	93-8686	Screw	23	27	2
93-8593	Spring	20	7	1	93-8687	Decal - Choke	22	28	1
93-8594	Spacer	20	8	1	93-8689	Decal - Instruction	19	34	1
93-8595	Nut	20	9	1	93-8690	Decal - Maintenance	22	27	1
93-8597	Nut	20	11	1	93-8692	Decal - Warning	23	30	1
93-8598	Lever	20	12	1	93-9008	Decal - Bail	13	47	1
93-8599	Asm. - Control Panel	20	13	1	93-9009	Bail Asm. (Europe)	13	41	1
93-8600	Bolt - Flanged	20	14	2	93-9014	Pin - Actuator	3	19	1
93-8601	Spring	20	15	1	93-9023	Cable - Throttle	13	1	1
93-8602	Rod - Governor	20	16	1	93-9024	Cable Assembly - Link	11	36	1
93-8603	Arm - Governor	20	17	1	93-9047	Drum	7	1	2
93-8606	Bolt	20	20	1	93-9356	Decal - Warning (Europe)	2	33	3
93-8607	Pin - Snap	20	21	1	93-9389	Decal - Warning (Japan)	2	33	3
93-8608	Washer	20	22	1	93-9391	Decal - Service (French)	5	10	1
93-8609	Arm - Pivot	20	23	1	93-9392	Decal - Service (Spanish)	5	10	1
93-8610	Sleeve	20	24	1	93-9393	Decal - Service (German)	5	10	1
93-8613	Gasket - Carburetor	21	1	3	93-9394	Decal - Service (Japan)	5	10	1
93-8617	Valve - Choke	21	5	1	93-9886	Decal - Fuel (Europe)	12	51	1
93-8619	Asm. - Screw	21	7	1	93-9886	Decal - Fuel (Japan)	12	51	1
93-8624	Gasket	21	12	1	94-3431	Module - Interlock (Europe)	12	50	1
93-8625	Asm. - Float Chamber	21	13	1	94-5850	Spindle - Drum	7	2	1
93-8626	Asm. - Screw	21	14	1	94-5852	Hub - Drum	7	8	1
93-8627	Bolt	21	15	1	94-5860	Module - Interlock	12	50	1
93-8628	Bolt - Stud	21	16	2	94-5861	Bracket - Module	12	48	1
93-8629	Clamp	21	17	1	94-5862	Harness - Wire	11	24	1
93-8630	Tube	21	18	1	94-5865	Harness - Wire (Europe)	11	24	1
93-8631	Nut	20	18	1	94-6312	Decal - Console (Japan)	13	31	1
93-8631	Nut	21	19	2	94-6825	Bolt - Flanged	23	20	4
93-8632	Bolt - Stud	21	20	2	94-6826	Filter - Fuel	23	25	1
93-8633	Pipe - Intake	21	21	1	94-6836	Piston (Oversized)	17	*	1
93-8634	Asm. - Air Filter	22	1	1	94-6837	Piston Ring Set (Oversized)	17	*	1
93-8635	Case - Air Filter	22	2	1	94-6838	Bolt - Flanged	17	8	4
93-8636	Element - Air Filter	22	3	1	94-6840	Bolt - Flanged	19	33	3
93-8637	Element - Air Filter	22	4	1	94-6841	Asm. - Governor	20	25	1
93-8638	Cap - Air Filter	22	5	1	94-6842	Washer	20	26	1
93-8639	Washer	22	6	22	94-6844	Asm. - Float	21	11	1
93-8640	Bolt	22	7	2	94-6845	Screw	21	22	1
93-8641	Nut	22	8	3	94-6846	Clamp	21	23	1
93-8642	Plate - Air Filter	22	9	1	94-6848	Bolt - Stud	22	20	2
93-8643	Asm. - Muffler	22	10	1	94-6849	Filter - Tap	23	13	1
93-8644	Bolt	22	11	4	94-9003	Engine Assembly	11	23	1
93-8645	Washer	22	12	4	94-9007	Cover - Bellcrank	11	1	1
93-8646	Cover - Muffler	22	13	1	94-9015	Screw - HH	20	10	1
93-8647	Screw	22	14	4	94-9026	Flywheel	19	30	1
93-8648	Pipe - Tail	22	15	1	94-9027	Decal - Recoil	19	22	1
93-8649	Cover - Muffler	22	16	1	94-9028	Decal - Model	23	28	1
93-8650	Washer	22	17	2	94-9030	Spring - Governor	20	19	1
93-8651	Collar	22	18	1	94-9031	Coil - Ignition	19	35	1
93-8652	Pipe - Exhaust	22	19	1	94-9032	Asm. - Carburetor	21	3	1
93-8654	Gasket - Muffler	22	21	1	94-9033	Valve - Throttle	21	4	1
93-8655	Washer - Spring	22	22	2	94-9035	Nozzle - Main	21	9	1
93-8656	Nut - Hex.	22	23	2	94-9036	Jet - Main #65	21	10	1
93-8657	Gasket - Air Filter	22	24	1	94-9037	Jet - Pilot #40	21	6	1
93-8658	Pipe	22	25	1	94-9038	Lead - Wire	19	5	1
93-8659	Tube	22	26	1	94-9039	Clamp	19	1	1
93-8660	Asm. - Fuel Cap	23	1	1	94-9040	Tube	19	39	1
93-8661	Screw	23	2	2	94-9041	Seal - O-Ring	17	23	2
93-8662	Gasket	23	3	1	94-9042	Nut	23	8	1
93-8663	Spring	23	4	1	94-9043	Gear - Helical	17	20	1
93-8664	Clamp	23	5	2	94-9044	Cap - Grip	19	16	1
93-8665	Clamp	23	6	1	94-9045	Grip	19	17	1
93-8666	Tube	23	7	1	94-9046	Case - Recoil	19	18	1
93-8668	Washer	23	9	1	94-9047	Housing - Fan	19	8	1
93-8669	Asm. - Tap	23	10	1	94-9048	Insulator	21	2	1
93-8670	Screw	23	11	1	94-9049	Terminal	19	38	1
93-8671	Seal - O-Ring	23	12	1	233-69	Knob	3	29	1
93-8673	Gasket	23	14	1	237-160	Plug	4	55	1
93-8674	Cup - Tap	23	15	1	2410-18	Plug	16	2	1
93-8675	Nut	23	16	1	2412-93	Clamp - R	11	20	1
93-8676	Clamp	23	17	2	2412-139	Clamp - Hose	9	41	1
93-8677	Tube	23	18	1	2412-140	Clamp - Hose	9	42	1

\*Not Illustrated

# TORO PART NUMBER INDEX (Cont.)

Part No.	Description	Pg. Ref. No. No. Qty.	Part No.	Description	Pg. Ref. No. No. Qty.
251-257	Bearing	7 4 2	3253-4	Washer - Lock	3 47 2
251-318	Bearing - Ball	3 4 1	3253-4	Washer - Spring Lock	13 22 2
251-336	Bearing - Ball	3 13 2	3253-4	Washer - Spring Lock	11 37 7
251-338	Bearing	6 9 2	3253-21	Washer - Lock	9 3 4
251-338	Bearing	9 30 1	3253-21	Washer - Spring Lock	11 6 2
251-342	Bearing	6 26 1	3253-21	Washer - Spring Lock	1 8 16
251-342	Bearing - Self-Aligning	3 37 1	3253-21	Washer - Spring Lock	13 34 2
251-343	Bearing	9 9 1	3254-4	Washer - Lock I.T.L.W.	3 16 1
253-96	Seal	6 33 1	3254-6	Washer - Int. Tooth Lock	2 44 2
253-96	Seal	3 35 1	3254-6	Washer - Lock I.T.L.W.	9 22 2
253-118	Seal - Oil	3 6 1	3254-8	Washer - Lock I.T.L.W.	15 8 4
253-159	Seal - Spring Lip	7 3 2	3254-8	Washer - Lock I.T.L.W.	6 39 8
253-160	Seal	6 8 4	3254-8	Washer - Lock I.T.L.W.	4 58 4
253-160	Seal	9 29 2	3255-8	Washer - Lock	2 30 4
253-161	Seal - V-Ring	6 16 2	3255-9	Washer - External Lock	11 21 2
253-163	Seal	6 25 1	3256-2	Washer - Flat	11 2 1
253-163	Seal	3 39 1	3256-22	Washer - Flat	5 5 6
256-206	Bushing	13 39 2	3256-22	Washer - Flat	10 58 2
283-75	Pin - Clevis	9 20 1	3256-22	Washer - Flat	12 53 1
302-5	Fitting - Grease	14 2 2	3256-23	Washer - Flat	7 16 4
302-5	Fitting - Grease	3 5 2	3256-23	Washer - Flat	13 23 2
302-5	Fitting - Grease	11 8 2	3256-24	Washer - Flat	9 4 4
302-5	Fitting - Grease	6 11 1	3256-24	Washer - Flat	1 9 6
302-5	Fitting - Grease	2 29 2	3256-24	Washer - Flat	13 35 2
302-11	Fitting - Grease	6 23 2	3256-56	Washer - Flat	11 7 10
302-19	Fitting - Grease	6 7 2	3257-32	Key	9 18 1
302-55	Fitting - Grease	9 7 1	3257-32	Key - Woodruff	7 18 2
302-64	Fitting - Grease	9 28 1	3259-15	Screw - Drive	3 23 1
321-2	Screw - Cap Hex. Hd.	9 39 3	3272-6	Pin - Cotter	9 23 2
321-3	Screw - Cap Hex. Hd.	5 4 4	3272-8	Pin - Cotter	9 24 1
321-3	Screw - Cap Hex. Hd.	12 49 1	3289-23	Screw - Flat Hd.	3 32 2
321-3	Screw - Cap Hex. Hd.	10 55 2	3290-378	Tie - Cable	13 40 4
321-4	Screw - Cap Hex. Hd.	3 27 1	3290-414	Washer	3 26 1
321-8	Screw - Cap Hex. Hd.	13 9 1	3290-467	Pin - Cotter, Hair	1 15 2
321-11	Screw - Cap Hex. Hd.	6 38 8	3290-485	Washer - Wave	3 40 1
321-20	Screw - Cap Hex. Hd.	4 57 4	3295-15	Rivet	15 3 11
322-2	Screw - Cap Hex. Hd.	2 31 4	3296-28	Nut - Lock Insert	13 37 2
322-3	Screw - Cap Hex. Hd.	6 18 10	3296-29	Nut - Lock	3 3 2
322-3	Screw - Cap Hex. Hd.	9 47 1	3296-29	Nut - Lock	6 6 4
322-3	Screw - Cap Hex. Hd.	3 48 1	3296-29	Nut - Lock	1 11 2
322-5	Screw - Cap Hex. Hd.	3 2 3	3296-29	Nut - Lock	7 17 4
322-5	Screw - Cap Hex. Hd.	6 5 4	3296-29	Nut - Lock	13 26 4
322-5	Screw - Cap Hex. Hd.	7 13 8	3296-29	Nut - Lock	11 30 4
322-5	Screw - Cap Hex. Hd.	9 36 4	3296-33	Nut - Lock	7 7 1
322-9	Screw - Cap Hex. Hd.	13 7 4	3296-39	Nut	3 33 2
322-9	Screw - Cap Hex. Hd.	7 10 8	3296-39	Nut - Lock	1 23 2
322-9	Screw - Cap Hex. Hd.	1 17 2	3296-39	Nut - Lock	6 34 2
322-9	Screw - Cap Hex. Hd.	11 25 4	3296-39	Nut - Lock	12 46 1
323-4	Screw - Cap Hex. Hd.	11 5 2	3296-42	Nut - Lock	5 6 4
323-4	Screw - Cap Hex. Hd.	1 18 12	3296-42	Nut - Lock	13 11 2
323-5	Screw - Cap Hex. Hd.	9 2 4	3296-42	Nut - Lock	9 15 1
323-5	Screw - Cap Hex. Hd.	1 7 4	3296-42	Nut - Lock	3 21 1
323-7	Screw - Cap Hex. Hd.	6 35 2	3296-42	Nut - Lock	11 41 4
323-11	Screw - Cap Hex. Hd.	11 34 1	3296-56	Nut - Lock	13 3 1
323-18	Screw - Cap Hex. Hd.	2 45 2	3296-57	Nut	6 14 2
323-34	Screw - Cap Hex. Hd.	13 33 2	3296-57	Nut - Lock	9 17 1
3210-7	Screw - Cap Hex. Hd.	13 21 2	32113-012	Screw - HH (Europe)	12 52 4
3218-2	Nut - Jam	9 13 3	32120-11	Ring - Retaining	3 8 1
3218-2	Nut - Jam	1 22 2	32120-42	Ring - Retaining	12 45 1
3218-20	Nut - Hex. Jam (Europe)	13 45 2	32120-42	Ring - Retaining	9 48 1
3218-20	Nut - Jam	11 15 2	32120-42	Ring - Snap	6 42 2
3219-1	Nut - Hex	15 9 4	32120-42	Ring - Snap	3 45 1
3219-14	Nut	16 3 1	32122-22	Screw - Phill. Truss Hd.	16 2 1
3220-5	Nut - Jam	3 17 1	32128-48	Nut - Flange	5 16 2
3220-6	Nut - Jam	2 40 2	32144-73	Screw - Hex. Washer Hd.	11 29 1
3231-5	Screw - Carriage	2 32 2	32144-73	Screw - Self Tapping	5 8 5
3242-4	Screw - Set	1 21 2	32151-89	Ring - Retaining	3 14 1
3253-3	Washer - Lock	3 22 1	32151-92	Ring - Retaining	3 38 1
3253-3	Washer - Lock	9 40 5	32151-95	Ring - Retaining	3 15 2
3253-4	Washer - Lock	7 9 16	6045-P1	Axle (20-17/32" Long)	8 2 1
3253-4	Washer - Lock	9 12 8	6046-P1	Axle (6-19/32" Long)	8 3 1
3253-4	Washer - Lock	6 19 10			

\*Not Illustrated

## PRODUCT CHANGES

In an effort to make improvements available to TORO owners as quickly as possible, minor changes are incorporated into Toro's products from time to time that do not become immediately shown in the Parts Catalog. If such a change has been made in your unit, which is not reflected in your manual, see your TORO Distributor or his Authorized TORO Service Dealer for information and part numbers.

## IDENTIFICATION AND ORDERING

### MODEL AND SERIAL NUMBERS

The Greensmaster 1000 has two identification numbers; a model number and a serial number. The two numbers are stamped on a plate which is located on the main frame side plate. In any correspondence concerning the Greensmaster 1000, supply model and serial numbers to assure that correct information and replacement parts are obtained.

To order replacement parts from an Authorized TORO Service Dealer, supply the following information:

1. Model and serial number of the Greensmaster 1000.
2. Part number, description, and the quantity of part(s) desired.

**NOTE:** Do not order by reference number if a parts catalog is being used; use the PART NUMBER.

# TABLE OF CONTENTS

Description	Page	Description	Page
Frame Assembly .....	1—2	Scraper Options .....	15
Reel Drive Assembly .....	3—4	Special Tools .....	16
Reel Assembly .....	5	Engine Crankcase Assembly .....	17
Drum Drive Assembly .....	6	Engine Camshaft & Valves Assembly .....	18
Drum & Basket Assembly .....	7	Engine Ignition Assembly .....	19
Differential Assembly		Engine Governor Assembly .....	20
Peerless Model No. 100—111 .....	8	Engine Carburetor Assembly .....	21
Countershaft Assembly .....	9—10	Engine Air Filter & Muffler Assembly .....	22
Engine & Bellcrank Assembly .....	11—12	Engine Fuel Tank Assembly .....	23
Handle Assembly .....	13	TORO Part Number Index .....	24—27
Cutting Unit Roller Options .....	14		

Japanese parts kit number 94—5895 contains all of the individual parts on the preceding pages designated as (Japan).