



Count on it.

Parts Catalog

Electric Hose Reel Kit

Multi-Pro® 5800 Turf Sprayer

Model No. 41613—Serial No. 312000001 and Up

Ordering Replacement Parts

To order replacement parts, please supply the part number, the quantity, and the description of each part desired.

Understanding Reference Numbers

Each identified part in an illustration has a reference number. The reference number for a part also appears in the parts list, along with other information about the part.

This catalog uses two special reference number formats, one to indicate parts in a service assembly and another to indicate the quantity of a given part in an illustration.

Service Assembly Reference Numbers

Parts in service assemblies have reference numbers in the form a:b. The a represents the reference number of the entire service assembly and the b represents a sequential number unique to each part within the service assembly.

For example, a wheel assembly might be identified by reference number 6, the tire by 6:1, the valve by 6:2, and the wheel by 6:3. When you order the assembly identified by reference number 6, you receive all parts identified by reference numbers 6:1, 6:2, and 6:3. However, you may also order any part individually. Reference numbers of this type appear in illustration and in parts lists.

Reference Numbers Indicating Quantity

In an illustration, if a reference number indicates more than one part, the reference number has the form nX y. The n represents the quantity of the part, the X is the multiplication symbol, and the y represents the reference number.

For example, in an illustration, the reference number 2X 37 means that two of the parts identified by reference number 37 are indicated.

List of Abbreviations

AR: as required

ASM: assembly

BBC: blade brake control

BHTF: button head thread forming

CARR: carriage

CCW: counter clockwise

CW: clockwise

DEG: degrees

DPA: Dual Point Adjustment

ECM: electronic control module

EXT: external

FH: flat head

GA: gauge

HD: heavy-duty

HF: hex flange

HH: hex head

HHF: hex head flange

HHFTF: hex head flange thread forming

HJ: hex jam

HLH: hex lag head

HOC: height-of-cut

HSBH: hex socket button head

HSFH: hex socket flat head

HSH: hex socket head

HWH: hex washer head

HWHTF: hex washer head thread forming

HYD: hydraulic

LH: left hand

LP: Liquid Propane

NI: nylon insert

NPTF: national pipe thread fine

PFH: phillips flat head

PPH: phillips pan head

PPHTF: phillips pan head thread forming

PRH: phillips round head

PTH: phillips truss head

PTO: power-take-off

RH: right hand

ROPS: roll-over protection system

RRB: rear roller brush

SFH: slotted fillister head

SHH: slotted hex head

SHWH: slotted hex washer head

SPH: slotted pan head

SQH: square head

SRH: slotted round head

STD: standard

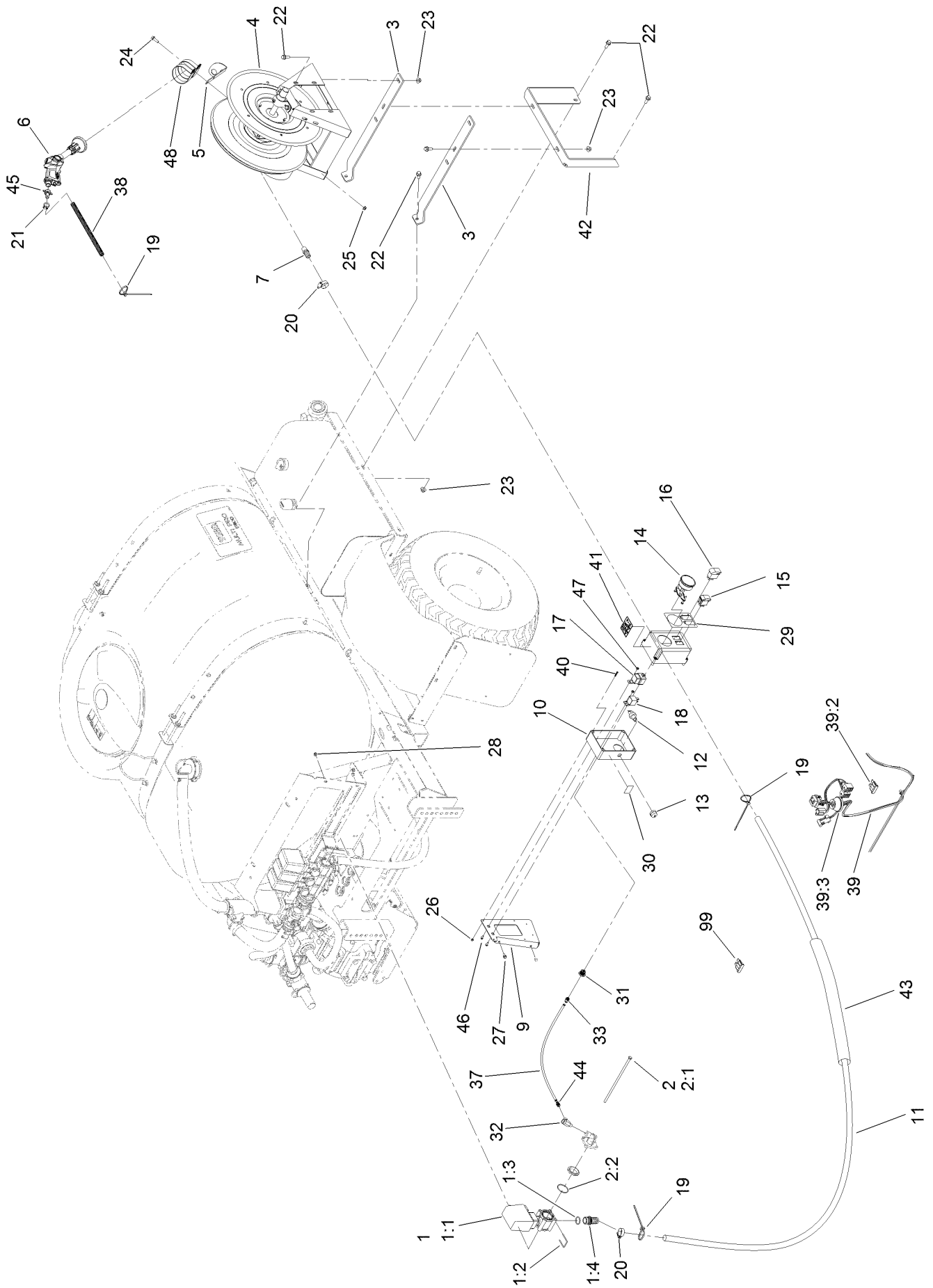
TAP: self tapping

TTH: torx truss head

Contents

Electric Hose Reel Kit 4
Hose Reel Assembly No. 120-0693 6
Hose Reel Frame Assembly No. 104-8714 7
Spray Gun Assembly No. 120-8610 8

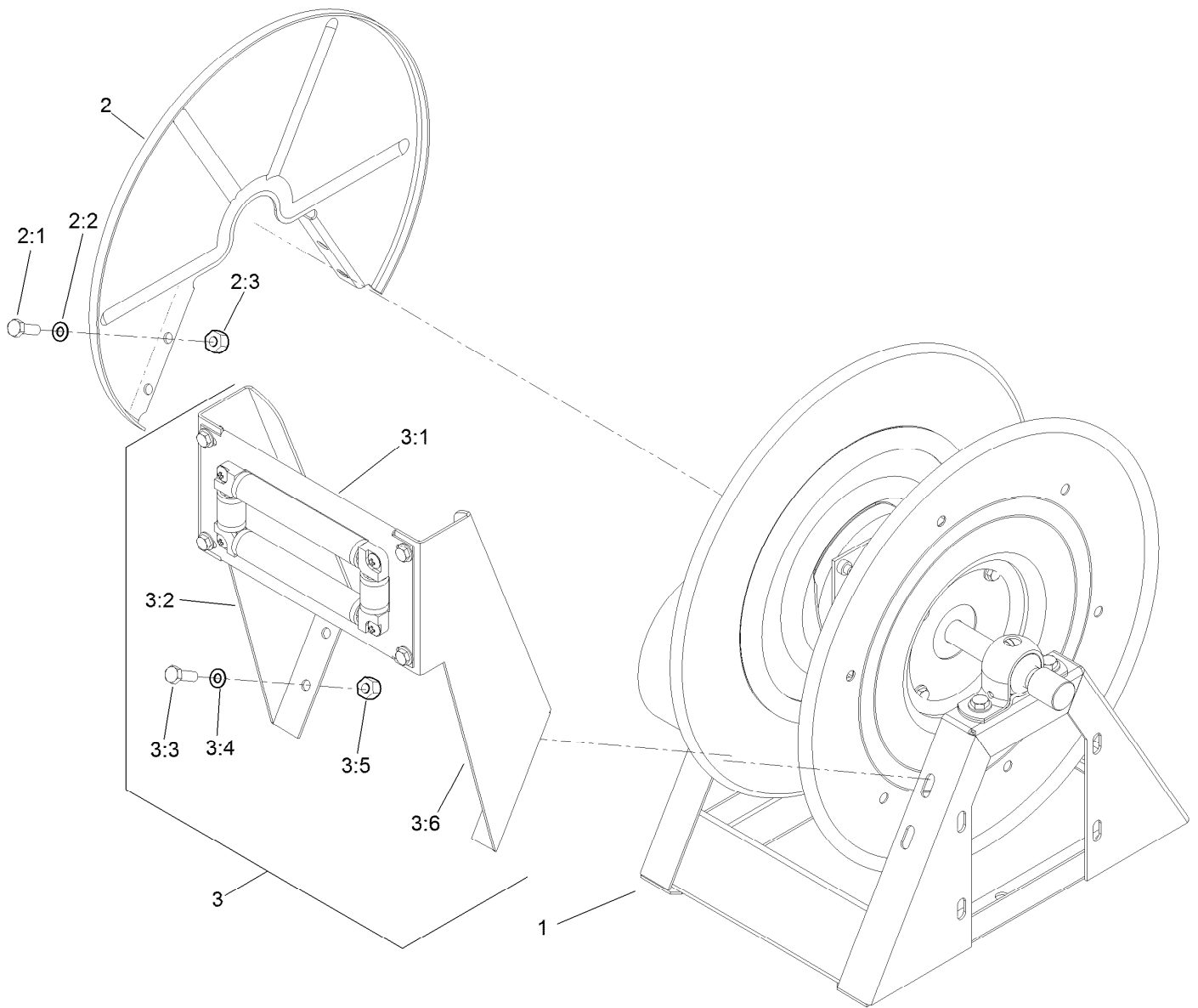
Electric Hose Reel Kit



Electric Hose Reel Kit (continued)

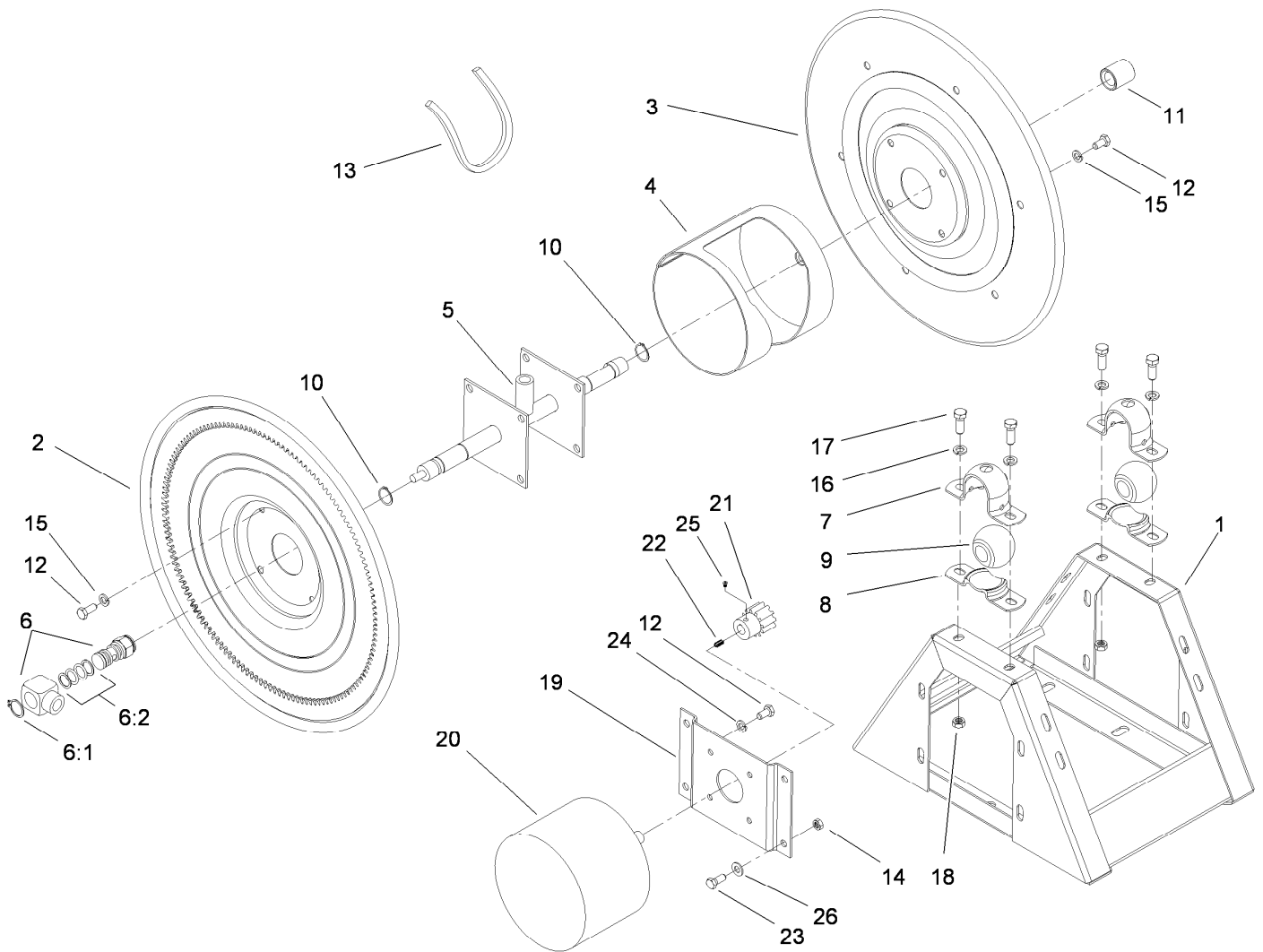
<i>Ref.</i>	<i>Part Number</i>	<i>Qty.</i>	<i>Description</i>	<i>Ref.</i>	<i>Part Number</i>	<i>Qty.</i>	<i>Description</i>
1		1	Valve ASM ●	23	32128-43	10	Nut-Flange
1:1	117-7969	1	Valve (W/O Bypass)	24	3234-17	2	Screw-HHF
1:2	119-4862	1	Fork	25	32128-20	2	Nut-HF
1:3	119-0464	1	Hosebarb	26	3296-1	4	Nut-Lock
1:4	119-4868	1	O-Ring	27	3234-33	3	Screw-HHF
2	119-0472	1	Bracket Mounting Kit	28	32128-33	3	Nut-HF
2:1	119-4880	4	Screw-HH	29	119-4878	1	Decal-Hose Reel
2:2	119-4870	1	O-Ring	30	107-8757	1	Decal-Reel, Hose
3	119-0563-03	2	Strap-Hose Reel	31	100-8665	1	Gauge-Reducer, Pressure
4	120-0693	1	Hose Reel ASM	32	2815-16	1	Fitting-HYD, Tee
5	120-8593-03	1	Bracket-Spraygun	33	100-8667	1	Coupler-Reducer
6	120-8610	1	Spraygun	37	119-4954	1	Gauge-Pressure, Tube
7	110-5065	1	Hosebarb	38	107-8756	1	Hose Hose Reel ASM
9	120-8591-03	1	Mount-Control	39	119-1765	1	Harness-Wire
10	120-8590	1	Box-Control	39:2	94-8002	1	Fuse-Blade, 50 Amp
11	119-0491	1	Hose-Supply	39:3	32180-033	1	Grommet
12	112-3324	1	Switch-Horn	40	363-3160	4	Screw-Ssh
13	112-3313	1	Cap And Nut ASM	41	120-0618	1	Decal-Warning, Hose
14	120-8546	1	Gauge-Pressure	42	119-0562-03	1	Bracket-Hose Reel
15	100-1535	1	Switch	43	107-8650	1	Conduit-Convoluted
16	100-8490	1	Switch-Rocker	44	100-8674	1	Coupler-Tube
17	99-7430	1	Relay	45	121-4982	1	Hosebarb-Spraygun
18	99-7435	1	Relay-Power	46	3290-321	2	Screw-HWH
19	3290-378	3	Tie-Cable	47	3296-2	2	Nut-Lock, NI
20	2412-129	2	Clamp-Hose	48	120-8592	2	Clamp-R
21	2412-36	1	Clamp-Hose	99	218-578	1	Fuse-Blade, 10 Amp
22	3234-11	10	Screw-HHF				

● Not serviced separately



Hose Reel Assembly No. 120-0693

<i>Ref.</i>	<i>Part Number</i>	<i>Qty.</i>	<i>Description</i>
1	104-8714	1	Hose Reel Frame ASM
2	104-8715	1	Chainguard-Reel, Hose
2:1	322-5	4	Screw-HH
2:2	3256-23	4	Washer-Flat
2:3	3296-29	4	Nut-Lock, NI
3	104-8799	1	Guide-Reel, Hose
3:1	121-4983	1	Bracket-Roller
3:2	104-8820	1	Bracket-Roller Guide, Right
3:3	322-5	8	Screw-HH
3:4	3256-23	8	Washer-Flat
3:5	3296-29	8	Nut-Lock, NI
3:6	104-8821	1	Bracket-Roller Guide, Left

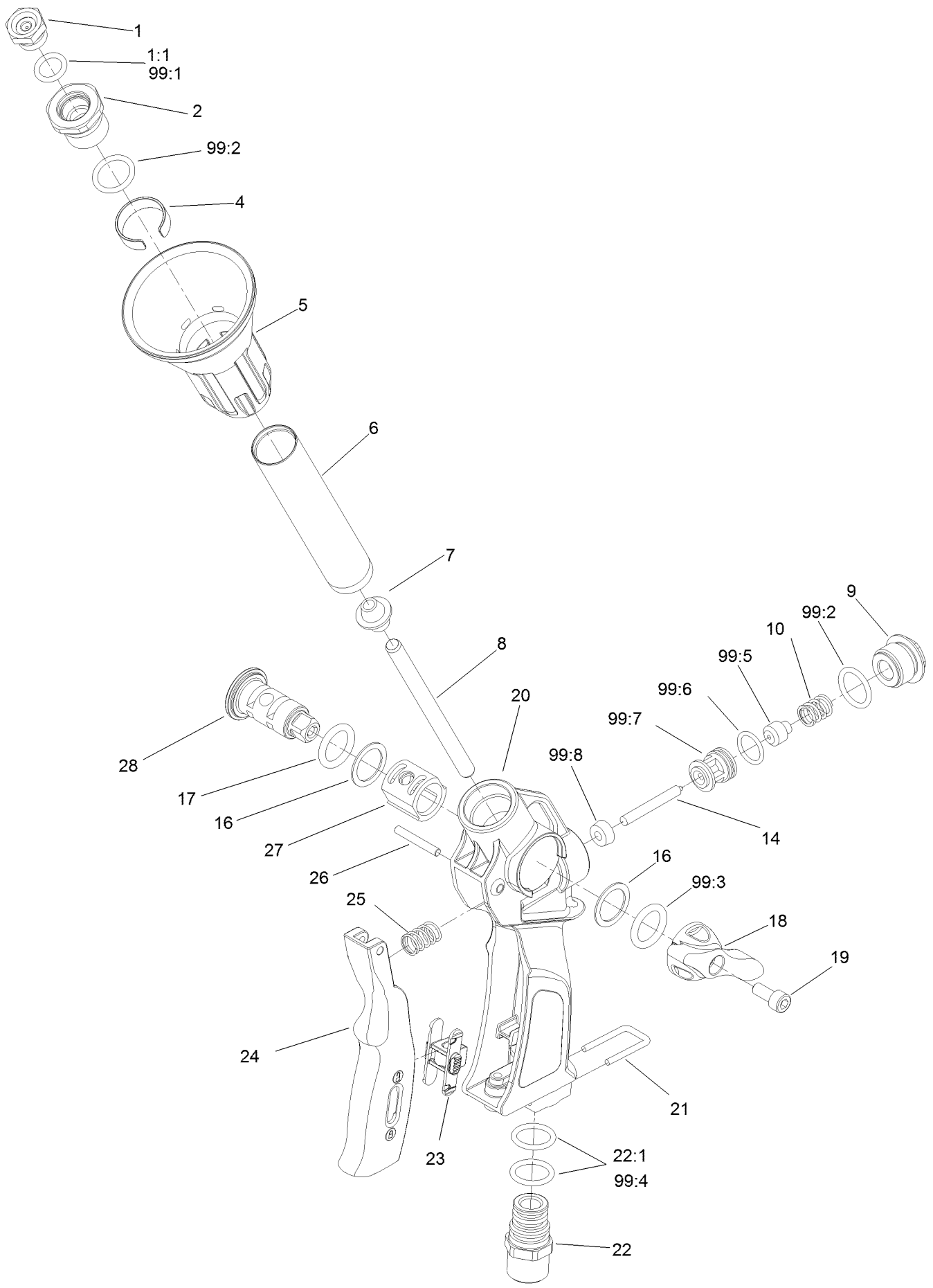


Hose Reel Frame Assembly No. 104-8714

Ref.	Part Number	Qty.	Description
1	104-8803	1	Hose Reel Frame ASM
2	104-8804	1	Disc And Gear ASM
3	104-8805	1	Disc-Crank, Side
4	104-8806	1	Drum-Center
5	104-8807	1	Axle ASM
6	104-8808	1	Swivel ASM
6:1	104-8812	1	Ring-Retainer
6:2	104-8864	1	Swivel Seal Kit
7	104-8809	2	Block-Pillow, Top
8	104-8810	2	Block-Pillow, Bottom
9	104-8811	2	Bearing
10	104-8812	2	Ring-Retainer
11	104-8813	1	Cap-Pipe
12	322-3	8	Screw-HH

Ref.	Part Number	Qty.	Description
13	104-8814	1	Trim-Edge, Drum
14	3296-29	4	Nut-Lock, NI
15	3256-23	8	Washer-Flat
16	3253-21	4	Washer-Lock
17	323-6	4	Screw-HH
18	32128-21	1	Nut-HF
19	104-8815	1	Bracket-12V Dc
20	104-8816	1	Motor-12V Dc
21	104-8817	1	Pinion
22	104-8818	4	Key
23	322-5	4	Screw-HH
24	3253-4	1	Washer-Lock
25	104-8819	4	Screw-Set
26	3256-23	4	Washer-Flat

Spray Gun Assembly No. 120-8610



Spray Gun Assembly No. 120-8610 (continued)

<i>Ref.</i>	<i>Part Number</i>	<i>Qty.</i>	<i>Description</i>	<i>Ref.</i>	<i>Part Number</i>	<i>Qty.</i>	<i>Description</i>
1	121-4950	1	Nozzle-2.3Mm	22	121-4973	1	Hose-Tail
1:1	121-4951	1	O-Ring	22:1	121-4972	2	O-Ring
2	121-4952	1	Head-Nozzle Holder	23	121-4974	1	Slide-Lever
4	121-4954	1	Ring-Spacer	24	121-4975	1	Lever-Spraygun
5	121-4955	1	Spreader-Micro Jet	25	121-4977	1	Spring
6	121-4956	1	Tube-Spraygun	26	121-4978	1	Pin-Lever
7	121-4957	1	Conveyor-Inner	27	121-4979	1	Cover-Drum
8	121-4958	1	Tube-Spraygun, Inner	28	121-4980	1	Drum-Regulation
9	121-4959	1	Drum-Regulation	99	121-4981	1	Spraygun Seal Kit ●
10	121-4960	1	Spring-Spraygun	99:1	121-4951	1	O-Ring
14	121-4964	1	Pin-Hinge	99:2	121-4953	2	Gasket
16	121-4966	2	Washer-Teflon	99:3	121-4967	2	O-Ring
17	121-4967	2	O-Ring	99:4	121-4972	2	O-Ring
18	121-4968	1	Lever-Drum, Spraygun	99:5	121-4962	1	Plunger-Cone
19	121-4969	1	Screw	99:6	121-4961	1	O-Ring
20	121-4970	1	Grip-Spraygun	99:7	121-4963	1	Box And Seat
21	121-4971	1	Fork	99:8	121-4965	1	Seal

● Not illustrated

Notes:

Notes:



Count on it.