



# Valve Upgrade Kit

## 2010-2011 Multi-Pro® 5800 Turf Sprayer

Model No. 121-5049

### Installation Instructions

# 1

## Replacing the Valve Pistons

### Parts needed for this procedure:

3	Valve piston
3	Valve seat
3	Retaining fork

### Procedure

**Note:** Refer to [Figure 1](#) throughout this procedure.

- Put a pan under the machine to catch any liquid from the valves.
- Remove the three forks that hold the hoses and hose barbs to the valves and disconnect the hoses.
- Unscrew and remove each valve piston with a 3 mm hex wrench.

**Note:** Ensure that you catch and save the loose spring at the top of each piston.

- Lubricate the O-rings on the new pistons with vegetable oil.
  - Lubricate the O-ring on the male end of the valve seats.
  - Insert a loose spring and a new piston into the valve.
  - Using the new valve seat, press the piston into the valve and secure the valve seat with a retaining fork.
- Note:** If you cannot get the fork installed by pressing up on the piston, keep pressure on the piston with the valve seat while completing step 8, then insert the retaining fork to secure the valve seat.
- Tighten the new piston with the 3 mm Allen wrench.
  - Insert the appropriate hose barb fitting into the valve seat and secure it with the fork removed previously.
  - Repeat steps 6 through 9 for the remaining valves.

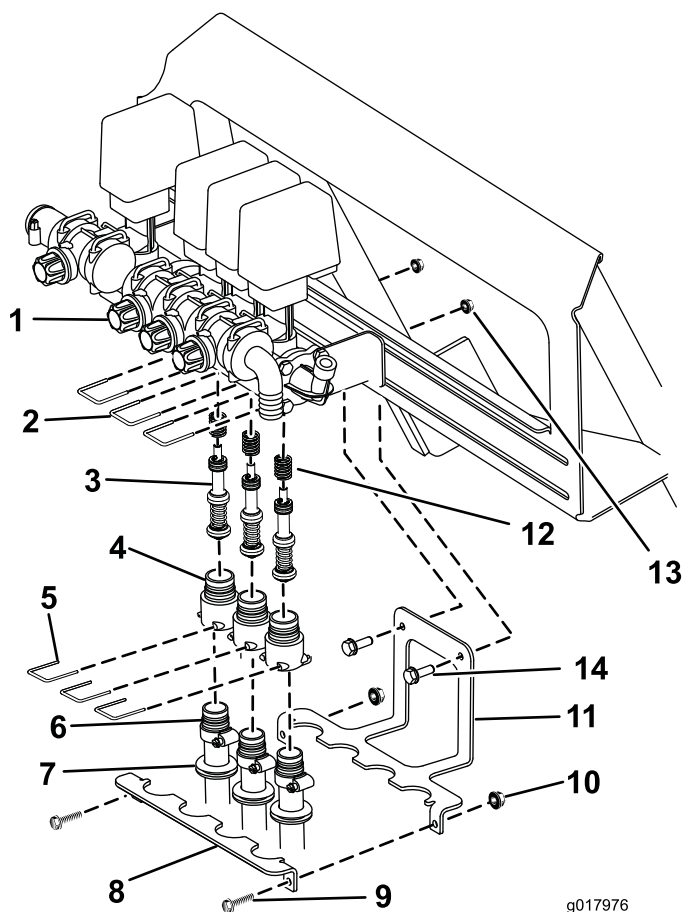


Figure 1

g017976

- |                                   |                             |
|-----------------------------------|-----------------------------|
| 1. Valve                          | 8. Hose retainer            |
| 2. Retaining fork (existing part) | 9. Bolt (1/4 x 5/8 inch)    |
| 3. Valve piston                   | 10. Locknut (1/4 inch)      |
| 4. Valve seat                     | 11. Hose stabilizer bracket |
| 5. Retaining fork                 | 12. Spring (existing part)  |
| 6. Hose barb (existing part)      | 13. Flange nut (5/16 inch)  |
| 7. Grommet                        | 14. Bolt (5/16 x 3/4 inch)  |



# 2

## Securing the Hoses

### Parts needed for this procedure:

1	Hose stabilizer bracket
2	Bolt (5/16 x 3/4 inch)
2	Flange nut (5/16 inch)
4	Rubber grommet
1	Hose retainer
2	Bolt (1/4 x 5/8 inch)
2	Locknut (1/4 inch)

### Procedure

**Note:** Refer to [Figure 1](#) throughout this procedure.

1. Secure the hose stabilizer bracket to the rear of the machine as shown in [Figure 1](#) using 2 bolts (5/16 x 3/4 inch) and flange nuts (5/16 inch).
2. Cut a slit in the rubber grommets and install one on each hose.

**Note:** If you have a hose reel kit installed, place a fourth grommet on the supply hose to the hose reel.

3. Secure the hoses to the hose stabilizer bracket with the hose retainer and 2 bolts (1/4 x 5/8 inch) and locknuts (1/4 inch). Ensure that the grommets seat into the brackets.

**Note:** If you have a hose reel kit installed, secure the supply hose in the fourth slot in the bracket.