



Front Deck Roller Bearing Upgrade

Product: Groundsmaster® 3500/3505/4300/4500/4700

January 11, 2012

Affected Units:

GM 3500

GM 3505

GM 4300

GM 4500

GM 4700

Models:

**30821, 30839,
30843**

30826,30849,

30859, 30861

**30856, 30856TE,
30857**

**30858, 30868,
30868TE**

Serial Numbers:

220000001-311009999

Deck Model Numbers

30834 and 30845

Subject: Upgraded Front Deck Roller Bearings

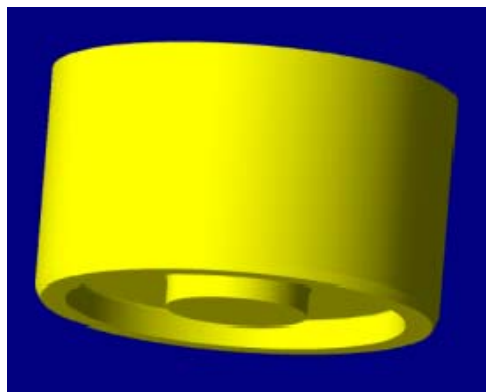
Situation:

As part of our continuous improvement process, Toro has released a new Front Roller Bearing. This bearing includes an improved seal package. All decks with serial numbers 312000101 and higher will include the upgraded bearings. This Bearing (120-3366) will also be a direct replacement for the original bearings on 22" and 27" Contour Rotary Deck front rollers.

Instructions:

When servicing the front rollers, consider replacing the bearings with the improved version Bearing (120-3366) using the Bearing Installation Tool (TOR6018), supplied by your local Toro Distributor (Fig. 1). The installation tool presses against both the inner and outer bearing races equally to ensure no side load is applied to the bearing during installation. The original Bearing (108-9017) will remain available because it is used in other Toro applications.

Figure 1



**Bearing Installation tool
TOR6018**