



Accessory Installation Kit

Espar Heater Kit for Workman® MDE Utility Vehicle

Model No. 117-4968

Installation Instructions

Note: This kit is to be installed in combination with an Espar Heater Kit and 12V Power Plug Adapter Kit (07318). The following procedures are instructions for configuring a Workman MDE to allow the Espar Heater Kit to be installed. Instructions for the installation of the heater can be found with the Espar Heater Kit.

Installation

1

Preparing the Vehicle

No Parts Required

Procedure

- Park the machine on a level surface, set the parking brake, turn the ignition off, and remove the key.
- Raise the bed box to open the battery circuit by carefully removing one of the battery cables. Refer to your *Operator's Manual* for more information.
- Remove the seats and seat base. Refer to the appropriate section of the *Service Manual* for more information.

2

Installing the Gas tank

Parts needed for this procedure:

1	Gas tank assembly
1	Breather hose barb
1	Breather hose
1	Fuel line grommet
1	Fuel line
1	Rubber bumper
1	Strap
1	Cap

Procedure

1. Locate the gas tank in loose parts. Remove the air vent and discard (Figure 1).

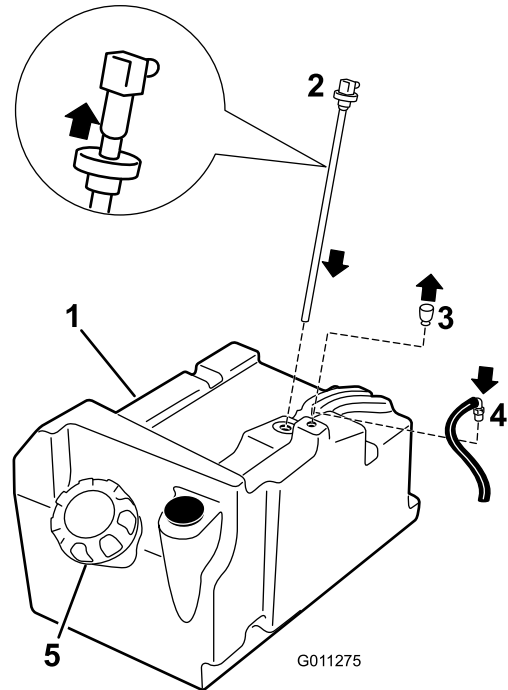


Figure 1

- | | |
|--------------|---------------------------|
| 1. Gas tank | 4. Breather hose and barb |
| 2. Fuel line | 5. Cap |
| 3. Air vent | |

2. Install the rubber grommet over the fuel line. Install the fuel line assembly to the gas tank (Figure 1).
3. Install the hose barb to the breather hose. Install the breather hose assembly to the gas tank (Figure 1).
4. Install the gas cap to the tank.
5. Remove the plate from the bottom of the frame and discard (Figure 2).



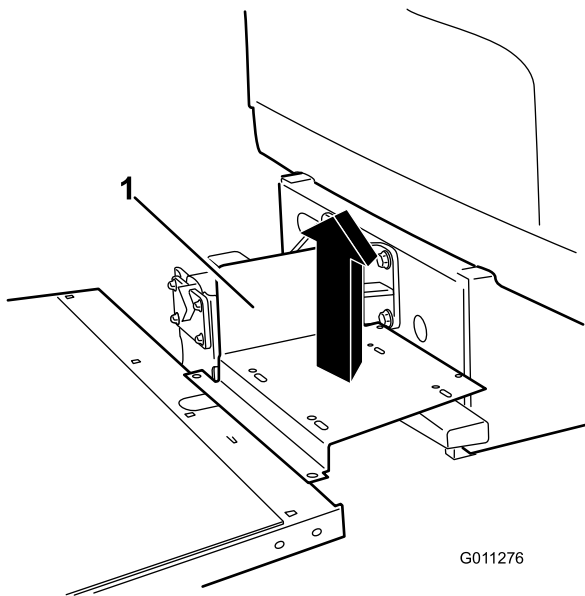


Figure 2

1. Plate

6. Install the strap through the slots in the frame (Figure 3). Install the rubber bumper through the hole in the frame as shown.

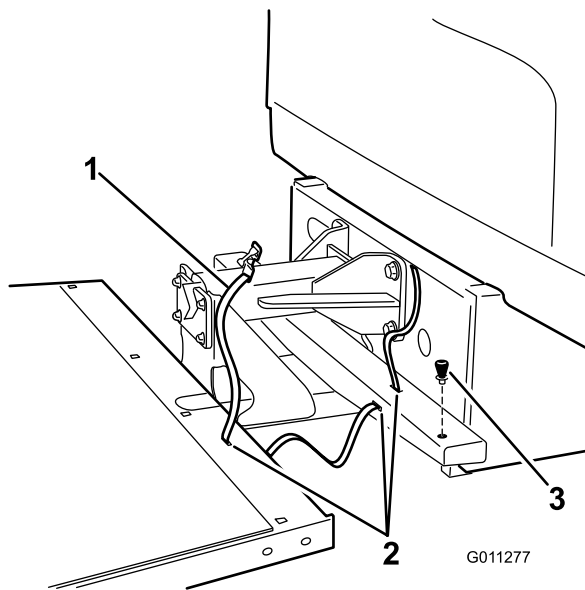


Figure 3

1. Strap
2. Slots in frame
3. Rubber bumper

7. Install the gas tank to the frame over the strap (Figure 4).

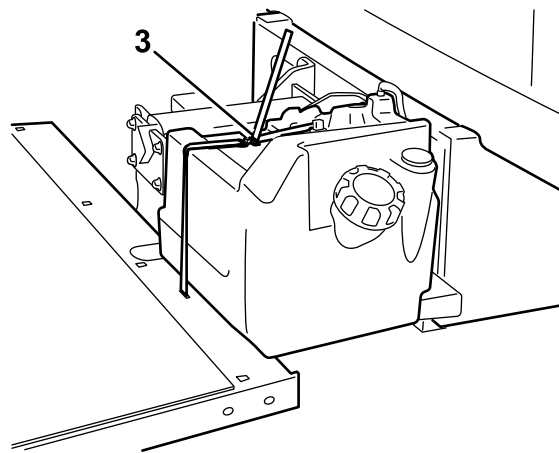
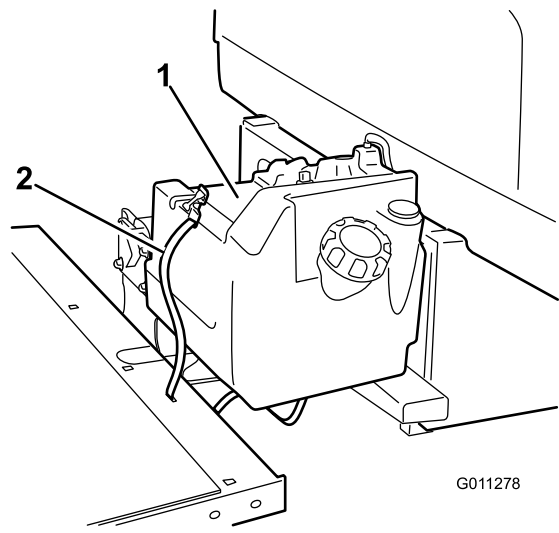


Figure 4

1. Gas tank
2. Strap
3. Strap fastened

8. Wrap the strap around the tank and tighten it to secure the tank to the frame (Figure 4).

3

Installing the Wire Harness.

Parts needed for this procedure:

1	Wire harness
---	--------------

Procedure

1. Locate the wire harness in loose parts and find the end of the harness terminating in two ring leads.

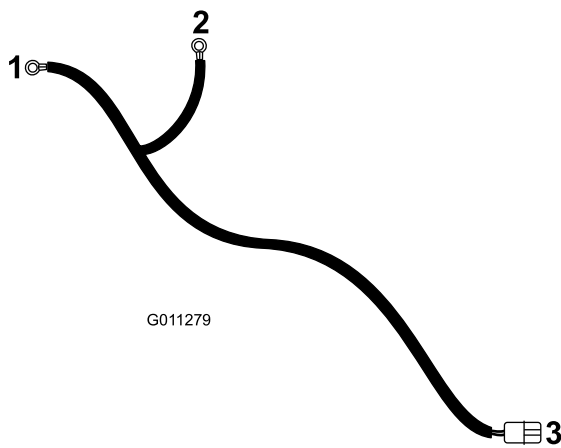


Figure 5

1. Ring terminal, red
2. Ring terminal, black
3. Plug

2. Move to the battery array in the frame box. Remove the protective boots from the positive and negative posts (Figure 6). Remove the nuts from the posts. Install the positive ring lead (Figure 5) on the positive battery posts depicted. Install the negative ring lead (Figure 5) on the negative battery post depicted.

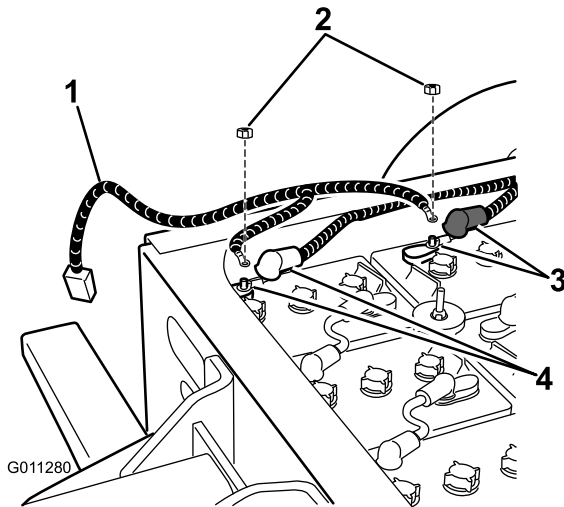


Figure 6

1. Wire harness
2. Nut, existing
3. Positive (red) battery post and covering boot
4. Negative (black) battery post and covering boot

3. Secure the ring leads with the nuts removed previously.
4. Route the remainder of the harness through the frame to the underside of the dashboard:
 - Pass the harness through the opening in the forward wall of the frame box (Figure 7).

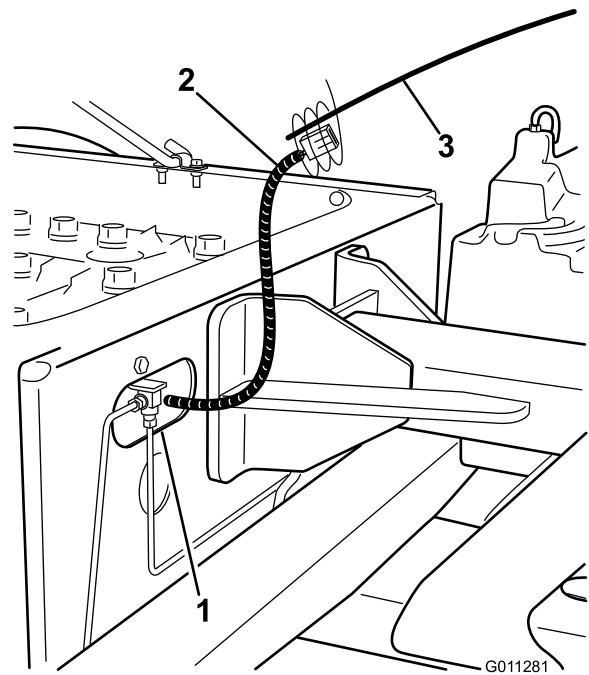


Figure 7

1. Opening in the forward wall of the frame box
2. Wire harness
3. Stiff wire

- Affix a stiff wire or fish tape to end of the wire harness terminated with plug connector to aid in the routing (Figure 7).
- Route the harness down into the opening on the center channel of the frame, below the frame transition joint (Figure 8).

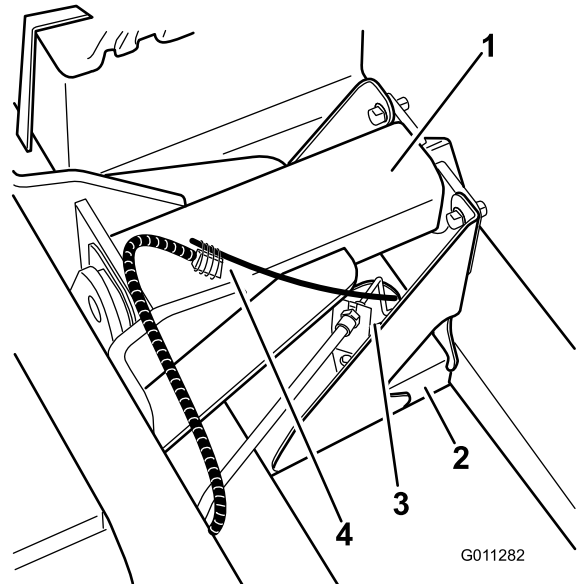


Figure 8

1. Frame joint
2. Center channel frame
3. Opening in center channel frame
4. Wire harness affixed to the wire

- Use the wire to pull the harness forward and up through the hole in the center frame channel below the dash (Figure 9).

6. Connect the 12V DC Out wire from the converter to the power wire on the heater kit.

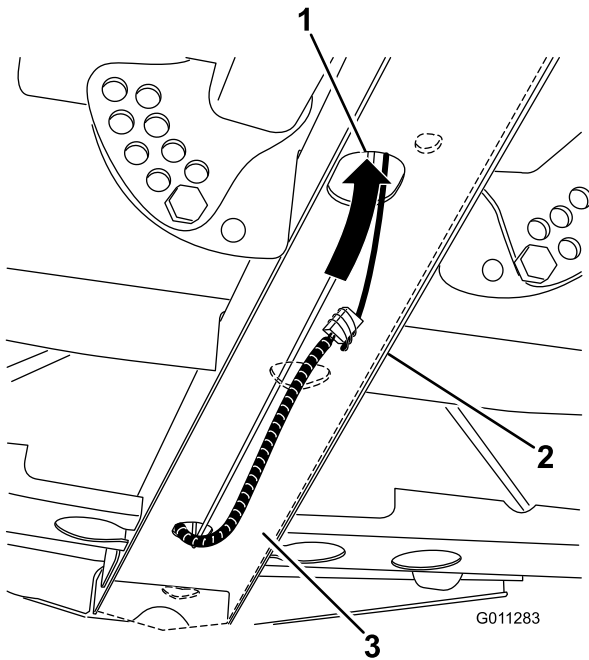


Figure 9

- | | |
|--|---|
| 1. Hole in the center frame channel below the dash | 3. Center channel cap (transparent for clarity) |
| 2. Machine underside | |

- Disconnect the stiff wire or fish tape from the harness.
5. Route the plug end of the wire harness up through the floor board to the under side of the dash (Figure 10). This plug will provide power for the converter in the 12V Power Plug Adapter Kit.

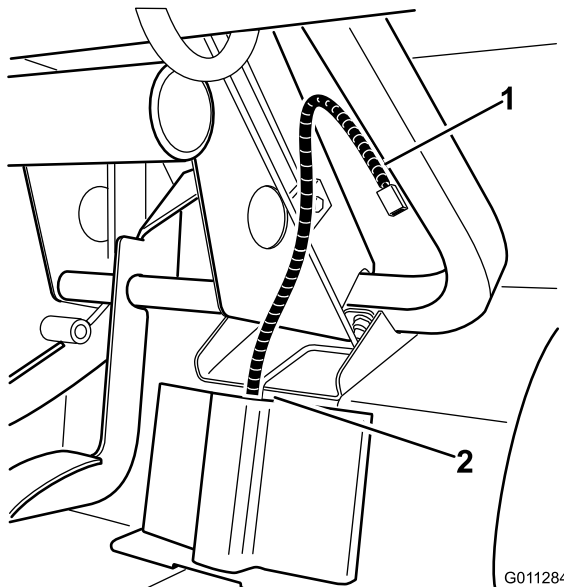


Figure 10

- | | |
|-----------------|--------------------------|
| 1. Wire harness | 2. Opening in floorboard |
|-----------------|--------------------------|