



Count on it.

Parts Catalog

730 Series Golf Sprinklers

Model No. 730 Series

Ordering Replacement Parts

To order replacement parts, please supply the part number, the quantity, and the description of each part desired.

Understanding Reference Numbers

Each identified part in an illustration has a reference number. The reference number for a part also appears in the parts list, along with other information about the part.

This catalog uses two special reference number formats, one to indicate parts in a service assembly and another to indicate the quantity of a given part in an illustration.

Service Assembly Reference Numbers

Parts in service assemblies have reference numbers in the form a:b. The a represents the reference number of the entire service assembly and the b represents a sequential number unique to each part within the service assembly.

For example, a wheel assembly might be identified by reference number 6, the tire by 6:1, the valve by 6:2, and the wheel by 6:3. When you order the assembly identified by reference number 6, you receive all parts identified by reference numbers 6:1, 6:2, and 6:3. However, you may also order any part individually. Reference numbers of this type appear in illustration and in parts lists.

Reference Numbers Indicating Quantity

In an illustration, if a reference number indicates more than one part, the reference number has the form nX y. The n represents the quantity of the part, the X is the multiplication symbol, and the y represents the reference number.

For example, in an illustration, the reference number 2X 37 means that two of the parts identified by reference number 37 are indicated.

List of Abbreviations

AR: as required

ASM: assembly

BBC: blade brake control

BHTF: button head thread forming

CARR: carriage

CCW: counter clockwise

CW: clockwise

DEG: degrees

DPA: Dual Point Adjustment

ECM: electronic control module

EXT: external

FH: flat head

GA: gauge

HD: heavy-duty

HF: hex flange

HH: hex head

HHF: hex head flange

HHFTF: hex head flange thread forming

HJ: hex jam

HLH: hex lag head

HOC: height-of-cut

HSBH: hex socket button head

HSFH: hex socket flat head

HSH: hex socket head

HWH: hex washer head

HWHTF: hex washer head thread forming

HYD: hydraulic

LH: left hand

LP: Liquid Propane

NI: nylon insert

NPTF: national pipe thread fine

PFH: phillips flat head

PPH: phillips pan head

PPHTF: phillips pan head thread forming

PRH: phillips round head

PTH: phillips truss head

PTO: power-take-off

RH: right hand

ROPS: roll-over protection system

RRB: rear roller brush

SFH: slotted fillister head

SHH: slotted hex head

SHWH: slotted hex washer head

SPH: slotted pan head

SQH: square head

SRH: slotted round head

STD: standard

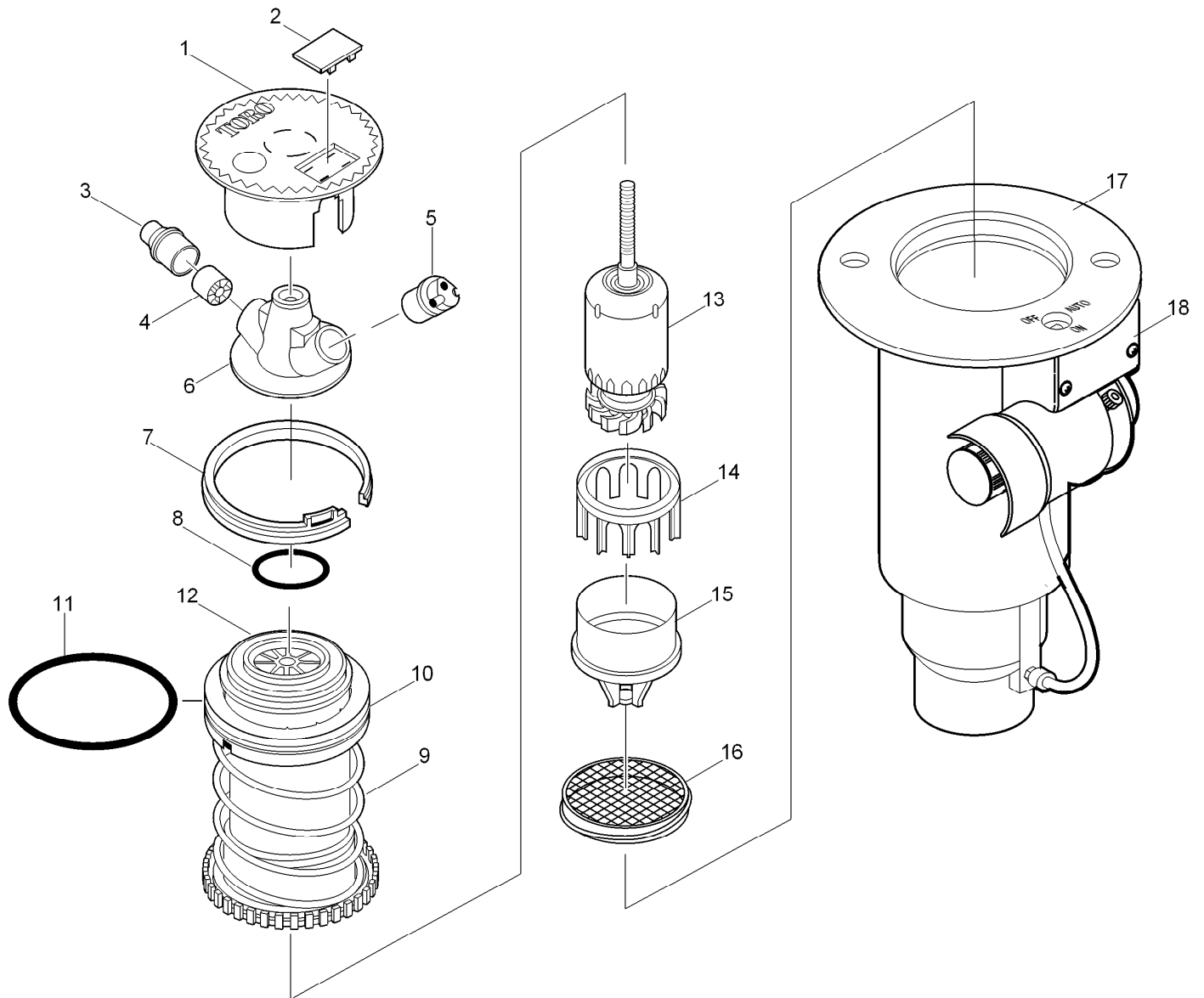
TAP: self tapping

TTH: torx truss head

Contents

730 Series 4

730 Series



730 Series (continued)

<i>Ref.</i>	<i>Part Number</i>	<i>Qty.</i>	<i>Description</i>
1	89-1293	1	Cap
2	89-1589	1	Plug, Cap (Black)
3	89-8780	1	Nozzle, Main, 31, Yellow (Includes Item 4)
3	89-8781	1	Nozzle, Main, 32, Orange (Includes Item 4)
3	89-8782	1	Nozzle, Main, 33, Brown (Includes Item 4)
3	89-8783	1	Nozzle, Main, 34, Blue (Includes Item 4)
3	89-8784	1	Nozzle, Main, 35, Green (Includes Item 4)
3	89-8785	1	Nozzle, Main, 36, Red (Includes Item 4)
3	89-8786	1	Nozzle, Main, 37, Gray (Includes Item 4)
4	9-4098	1	Insert, Nozzle
5	102-5003	1	Nozzle Assembly., Inner, 31-37, Quad, Red
6	89-8907	1	Base Assy., Nozzle (Includes Nozzle Base And Insert Bearing)
7	89-1385	1	Snap Ring, Riser
8	363-4167	1	O-Ring, Nozzle Base
9		1	Riser Assy. (See Service Item 89-7562) ♦
10		1	Retainer, Spring (See Service Item 89-5979) ♦
11	363-4102	1	O-Ring, Paraffin As-568 232
12	89-1386	1	Retainer, Riser
13	102-4502	1	Drive Assy., 12-Pack
14	89-1390	1	Housing, Stator
15	89-9636	1	Stator, Variable, 31-34, Manila
15	89-9637	1	Stator, Variable, 35-36, Black
15	89-9622		Stator, Variable, 37, Green
16	89-6495	1	Screen

<i>Ref.</i>	<i>Part Number</i>	<i>Qty.</i>	<i>Description</i>
17		1	Body Assy. (See Golf Sprinkler Body Assembly Section) ○ ♦
18		1	Pilot Valve Assembly (See Pilot Valve Assembly Section) □ ♦
	102-1870		Nozzle Assy., Less Cap, 734-33 (Includes Items 3-6) ● ▲
	102-1871		Nozzle Assy., Less Cap, 734-34 (Includes Items 3-6) ● ▲
	102-1735		Nozzle Assy., Less Cap, 734-35 (Includes Items 3-6) ● ▲
	102-1736		Nozzle Assy., Less Cap, 734-36 (Includes Items 3-6) ● ▲
	102-1737		Nozzle Assy., Less Cap, 734-37 (Includes Items 3-6) ● ▲
	89-5979		Seal Kit, 730 (Includes Items 10-12) ● ▲
	89-7562		Riser Assy. W/Screen, 730 Svc. (Includes Items 9-12 & 16) ● ▲
	YARDMARKYEL	10	Yardage Marker, Yellow (10-Sheets Per Pack) ● ▲
	YARDMARKLAV	10	Yardage Marker, Lavender (For Non-Potable Water Applications) ● ▲
	89-8289		Cap, Effluent ● ▲
	995-15		Selector Tool (Flag Key) ■ ▲
	995-100		Valve Snap Ring Pliers With Screen Remover ■ ▲
	995-08		Valve Removal Tool ■ ▲
	996-76		Valve Insertion Tool ■ ▲
	995-83		Multi-Purpose Tool ■ ▲

● SERVICE ITEMS

▲ Not illustrated

□ See Pilot Valve Assembly Section.

■ SERVICE TOOLS

♦ Not serviced separately

○ See Golf Sprinkler Body Assembly Section.



Count on it.