



# Z Master® Riding Mower

## with 48in TURBO FORCE® Side Discharge Mower

Model No. 74141TE—Serial No. 312000001 and Up

### Setup Instructions

## Setup

### Loose Parts

Use the chart below to verify that all parts have been shipped.

Procedure	Description	Qty.	Use
<b>1</b>	No parts required	—	Remove parts from the crate.
<b>2</b>	No parts required	—	Check the tire pressure.
<b>3</b>	Rear wheels	2	Install the rear wheels.
<b>4</b>	Rollover Protection System Kit (ROPS)	1	Install the Rollover Protection System (ROPS).
<b>5</b>	Seat Seat plate Guard Flange nuts (5/16 inch)	1 1 2 8	Install the seat.
<b>6</b>	No parts required	—	Check the seat belt.
<b>7</b>	Right control lever Left control lever Bolt (3/8 x 1 inch) (2 are assembled) Nut (3/8 inch) (2 are assembled)	1 1	Install the motion control levers.
<b>8</b>	Carriage bolt (3/8 x 1-1/2 inches) Flange nut (3/8 inch)	1 1	Install the lift assist pedal.
<b>9</b>	Air cleaner cap Hose clamp	1 1	Install the air cleaner cap.
<b>10</b>	No parts required	—	Charge and install the battery.
<b>11</b>	No parts required	—	Check the engine oil level.
<b>12</b>	No parts required	—	Add fuel to the machine.
<b>13</b>	Number 2 general purpose lithium base or molybdenum base grease. (Purchase separately.)	1 tube	Check the machine for grease.
<b>14</b>	No parts required	—	Prepare the side discharge chute.
<b>15</b>	No parts required	—	Test the safety interlock system.

Procedure	Description	Qty.	Use
<b>16</b>	No parts required	—	Check the machine before delivery to the customer.
<b>17</b>	Operator's Manual Engine Owner's Manual Registration Card Operator training material Key	1 1 1 1 2	Delivering the machine to the customer.

# 1

## Removing Parts from the Crate

### No Parts Required

#### Procedure

Remove the tires, the seat and the Rollover Protection System (ROPS) Kit from the shipping crate.

# 2

## Checking the Tire Pressure

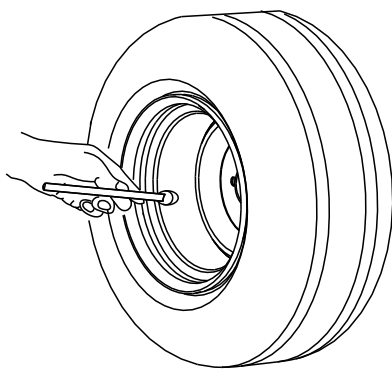
### No Parts Required

#### Procedure

Pressure: 13 psi (90 kPa)

**Note:** The front caster wheels may be semi-pneumatic tires. Semi-pneumatic tires do not have a valve stem and do not need to be checked.

Check the air pressure in the front tires and the rear tires.



G001055

Figure 1

# 3

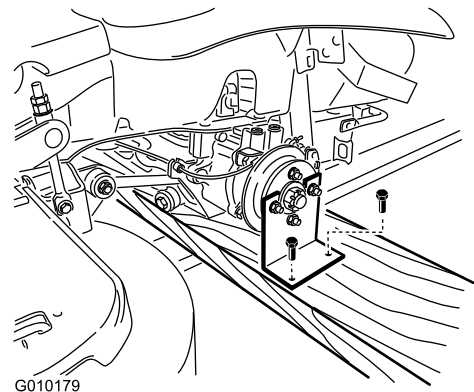
## Raising the Machine Up and Installing the Rear Wheels

### Parts needed for this procedure:

2	Rear wheels
---	-------------

#### Procedure

1. Remove the screws holding the right angle retaining plate to the crate.



G010179

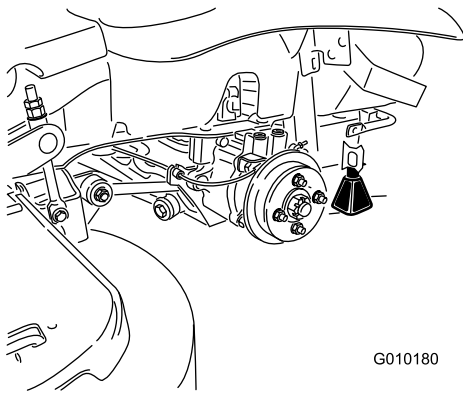
Figure 2

2. Raise the back of the machine up and support it with jack-stands.

#### **⚠ DANGER**

Mechanical or hydraulic jacks may fail to support the machine and cause a serious injury.

- Use a jack stand(s) when supporting the machine.
- Do not use hydraulic jacks.



**Figure 3**

# 5

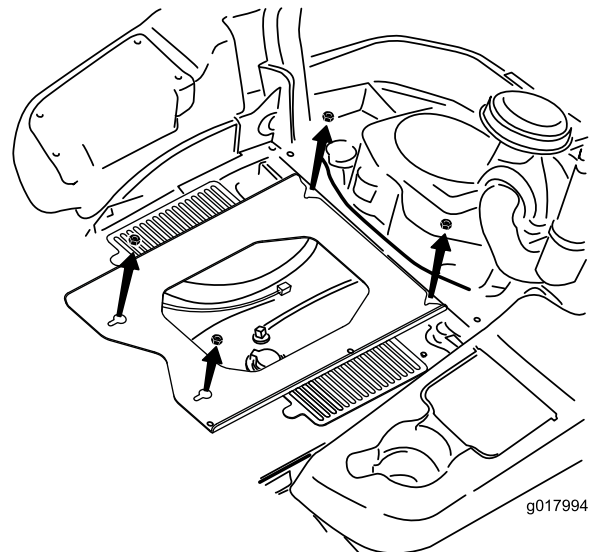
## Installing the Seat

### Parts needed for this procedure:

1	Seat
1	Seat plate
2	Guard
8	Flange nuts (5/16 inch)

### Procedure

1. Remove the 4 nuts holding the seat plate to the machine. Discard these nuts, they are used for shipping only.



**Figure 5**

# 4

## Installing the Roll Over Protection System

### Parts needed for this procedure:

1	Rollover Protection System Kit (ROPS)
---	---------------------------------------

### Procedure

Install the Rollover Protection System Kit. Follow the instructions included with the ROPS Kit.

# 6

## Checking the Seat Belt

### No Parts Required

### Procedure

**Important:** Ensure the bolt torque is set between 49 to 61 ft-lb (67 to 83 N-m).

The seat belt angle and the seat belt bolt torque need to be checked before operating.

1. Check the angle of the seat belt compared to the bottom of the seat. The angle needs to be 47 degrees. See (Figure 8).
2. If needed, set the seat belt to the correct angle.
3. Check and set the bolt torque between 49 to 61 ft-lb (67 to 83 N-m).

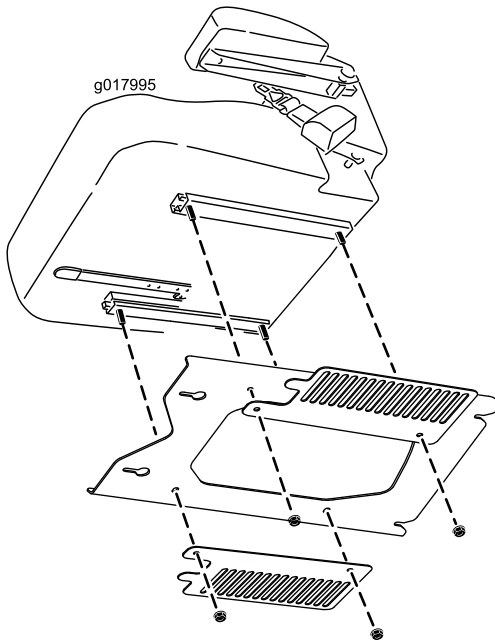


Figure 6

4. Plug the harness connector into the seat switch located on top of the fuel tank.
5. Install the seat to the machine frame with 4 flange nuts (5/16 inch).

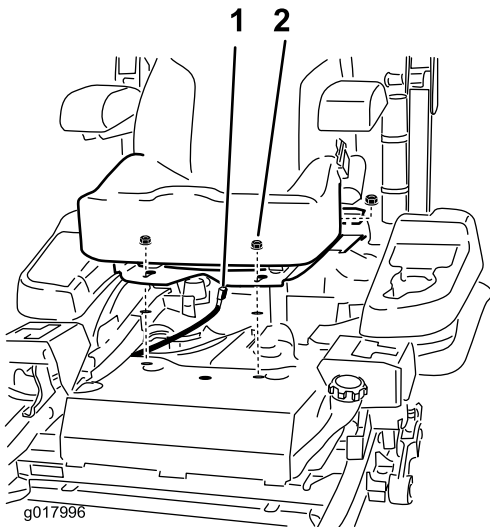


Figure 7

1. Harness connector
2. Flange nuts (5/16 inch)

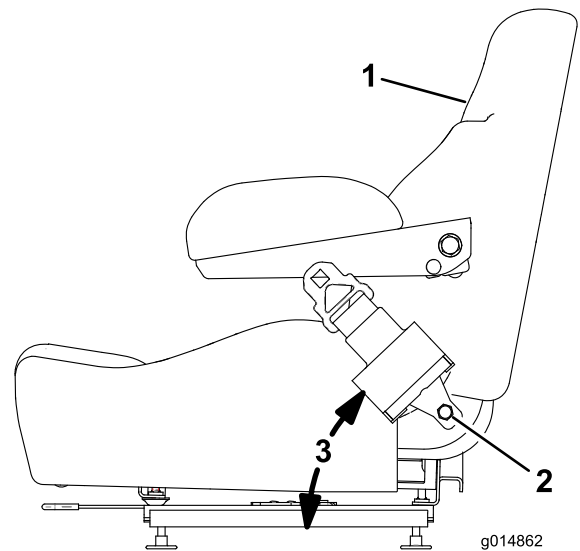


Figure 8

1. Side of seat
2. Seat belt bolt, Set torque between 49 to 61 ft-lb (67 to 83 N-m)
3. 47 degrees

# 7

## Installing the Motion Control Levers

### Parts needed for this procedure:

1	Right control lever
1	Left control lever
	Bolt (3/8 x 1 inch) (2 are assembled)
	Nut (3/8 inch)(2 are assembled)

### Procedure

1. Rotate the motion control levers to the upright position.
2. Loosely install the control levers on the outside of the posts, using 4 bolts and 4 nuts.

**Note:** Install the control levers in the top and middle holes for the high position or the middle and bottom holes for the low position, as desired.

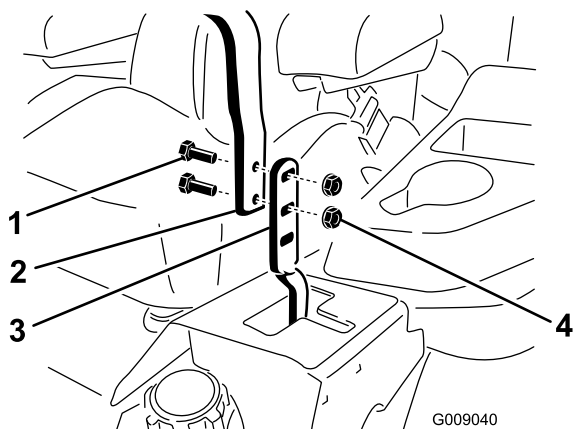


Figure 9

- |                        |                   |
|------------------------|-------------------|
| 1. Bolt (3/8 x 1 inch) | 3. Control lever  |
| 2. Handle              | 4. Nut (3/8 inch) |

3. Raise the levers and align them together in the neutral position and tighten the bolts.

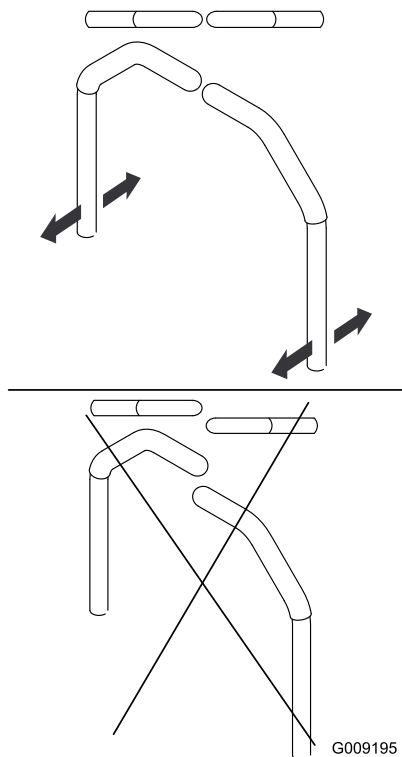


Figure 10

**Note:** If the machine is not properly tracking, refer to Adjusting the Tracking in your Operator's Manual.

# 8

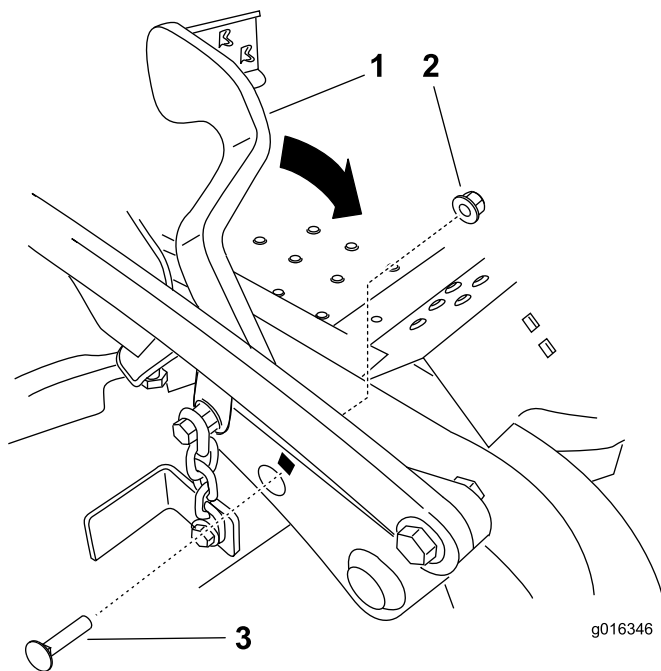
## Installing the Lift Assist Pedal

### Parts needed for this procedure:

1	Carriage bolt (3/8 x 1-1/2 inches)
1	Flange nut (3/8 inch)

### Procedure

1. If needed, loosen the existing bolt and nut for the lift assist pedal.
2. Rotate the lift assist pedal to the correct position and install the carriage bolt (3/8 x 1-1/2 inches) and locknut (3/8 inch) (Figure 11). Tighten both bolts.



**Figure 11**

1. Lift assist pedal
2. Flange nut (3/8 inch)
3. Carriage bolt (3/8 x 1-1/2 inches)

# 9

## Installing the Air Cleaner Cap

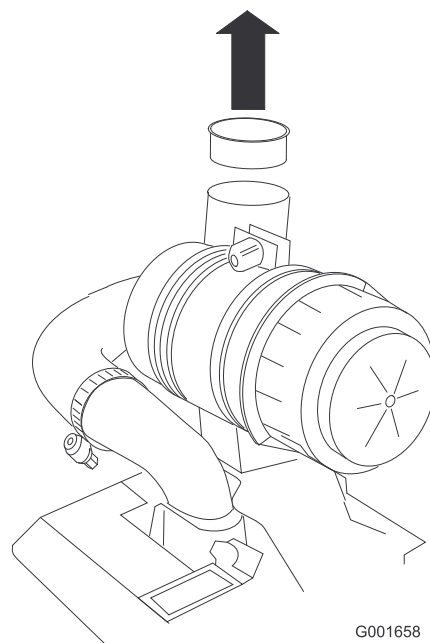
### Parts needed for this procedure:

1	Air cleaner cap
1	Hose clamp

### Procedure

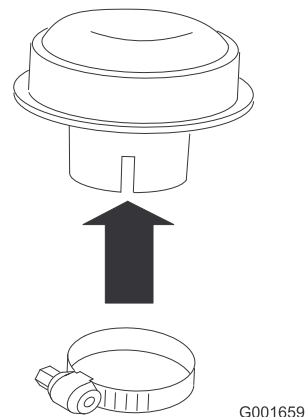
**Note:** Not all units come with a heavy duty air cleaner. This procedure only applies to models that have a heavy duty air cleaner.

1. Remove the plastic plug or tape covering the air cleaner.



**Figure 12**

2. Remove the air cleaner cap from the machine.
3. Install the hose clamp onto the air cleaner cap.



**Figure 13**

4. Install the air cleaner cap onto the air cleaner and secure it with the hose clamp.

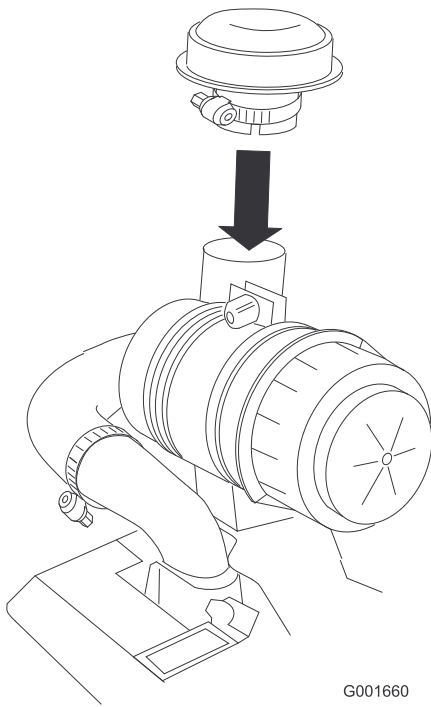


Figure 14

G001660

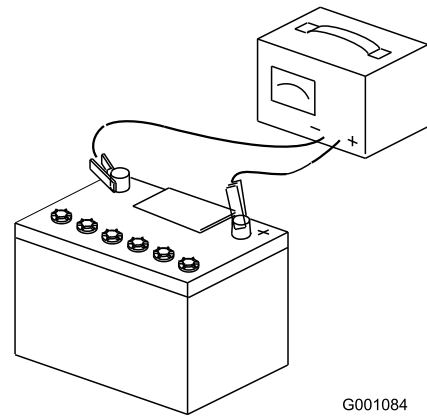


Figure 15

G001084

2. Install the battery. Refer to Installing the Battery in the *Operator's Manual* for instructions.

# 11

## Checking the Engine Oil Level

### No Parts Required

#### Procedure

Before you start the engine and use the machine, check the oil level in the engine crankcase; refer to Servicing the Engine Oil Level in *Operator's Manual*.

# 12

## Adding Fuel to the Machine

### No Parts Required

#### Procedure

Add gasoline to the machine before starting it. Refer to your Operator's Manual. for the correct fuel and procedure.

# 10

## Charging and Installing the Battery

### No Parts Required

#### Procedure

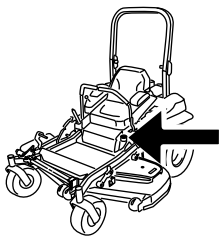
#### ⚠ WARNING

Charging the battery produces gasses that can explode and cause serious injury.

- Keep cigarettes, sparks and flames away from the battery.
- Make sure the ignition switch is off.
- Ventilate when charging or using the battery in an enclosed space.

**Important:** Do not run the machine with the battery disconnected; electrical damage may occur to the engine.

1. Charge the battery. Refer to the *Operator's Manual* for instructions.



G010171

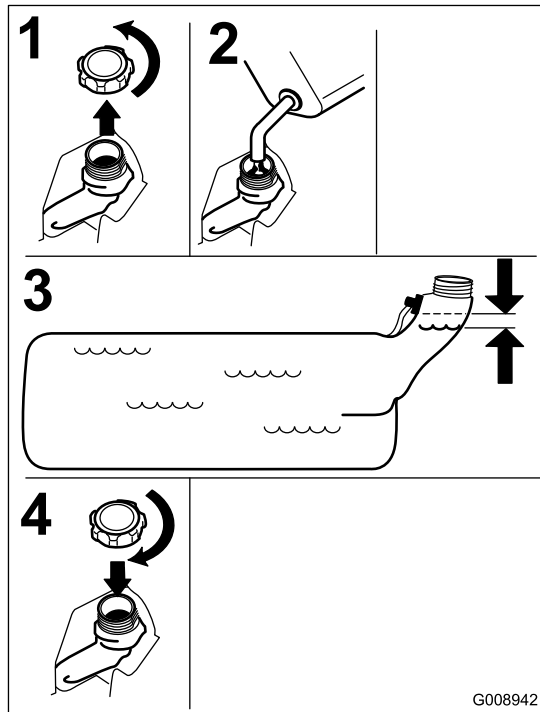


Figure 16

## 13

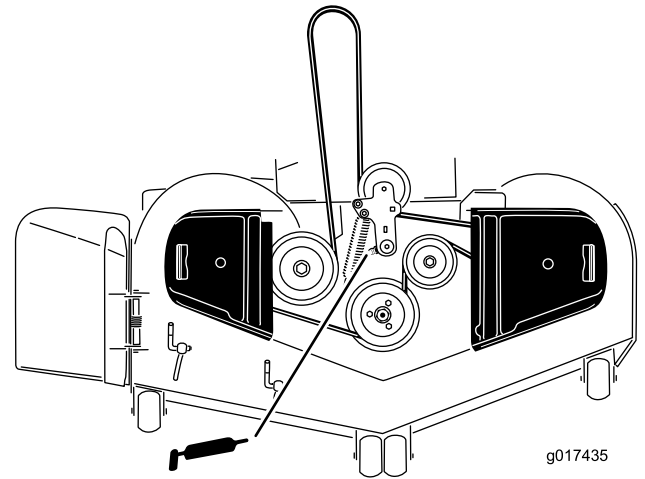
### Checking the Machine for Grease

#### Parts needed for this procedure:

1 tube	Number 2 general purpose lithium base or molybdenum base grease. (Purchase separately.)
--------	---

#### Procedure

Check the grease for the idler arm on the mower deck. If needed, add grease until it comes out of the seals.



g017435

Figure 17

## 14

### Checking the Side Discharge Chute

#### No Parts Required

#### Procedure

If there are plastic ties holding the side discharge chute up, remove them and lower the chute into place.

#### ⚠ WARNING

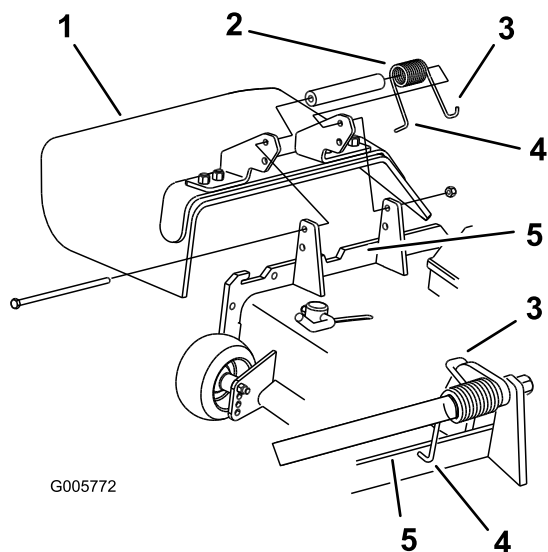
An uncovered discharge opening could allow the lawn mower to throw objects in the operator's or bystander's direction and result in serious injury or death. Also, contact with the blade could occur.

Never operate the lawn mower with the grass deflector removed unless you install a cover plate, a mulch plate, or a grass chute and catcher.

1. Make sure the **L** end of spring is installed behind the deck edge before installing the bolt as shown in Figure 18.
2. Place the **J** hook end of spring around grass deflector (Figure 18).

**Important:** The grass deflector must be free to rotate with downward tension. Lift the deflector up to the full open position and ensure that it rotates freely, without binding into the full down position.





**Figure 18**

- |                         |   |
|-------------------------|---|
| 1. Grass Deflector      | 4. L end of spring, place behind deck edge before installing bolt |
| 2. Spring               | 5. Deck edge  |
| 3. J hook end of spring |   |

# 15

## Testing the Safety Interlock System

### No Parts Required

### Procedure

Before using the machine, test the safety interlock system; refer to the Safety Interlock System in *Operator's Manual*.

# 16

## Checking the Machine Before Delivery to the Customer

### No Parts Required

### Procedure

Before delivering the machine to the customer, ensure that you perform or have performed the procedures listed in the following table and initial each when finished. Refer to the *Operator's Manual* for instructions on performing these procedures.

Initial	Check Procedure
	Check the tire pressure.
	Check the level of the mower.
	Check the mower deck idler arm for grease
	Check the engine oil level.
	Check the hydraulic fluid level.
	Check ROPS is secure.
	On liquid cooled machines, check the level of the coolant in the radiator and overflow bottle.
	Check the adjustment of the parking brake.
	Ensure that the machine tracks correctly; refer to the <i>Operator's Manual</i> for the adjustment procedure.
	Check the safety interlock system; refer to the <i>Operator's Manual</i> .
	Ensure that the PTO works.
	Check all the fasteners you installed to ensure that they are tight.

When you finish setting up the machine, sign and date in the space provided below:

Signature: \_\_\_\_\_ Date: \_\_\_\_\_

# 17

## Delivering the Machine to the Customer

### Parts needed for this procedure:

1	<i>Operator's Manual</i>
1	<i>Engine Owner's Manual</i>
1	Registration Card
1	Operator training material
2	Key

### Procedure

At delivery, Fill in the model and serial number and complete the items listed in the following table and initial each when finished.

Model No. \_\_\_\_\_ Serial No. \_\_\_\_\_

Dealer Initial	Customer Initial	Check Procedure
		Show the customer where the following features are located and how they function:
		• Hour meter/ Safety Interlock Symbols/ Battery indicator/Fuel Gauge
		• Fuel tank cap(s)
		• Oil fill cap/Oil dipstick
		• Spark plug(s)
		• Engine oil filter
		• Engine oil drain
		• Fuel filter(s)
		• Air filter
		• Radiator coolant (if applicable)
		• Hydraulic fluid reservoir
		• Hydraulic filter
		• Battery
		• Ignition switch
		• Throttle lever
		• Choke (if applicable)
		• Power take off switch (PTO)
		• Motion control levers
		• Parking brake
		• Mower height-of-cut
		• Height-of-cut deck lift pedal/ Transport lock
		• Z Stand® (if applicable)
		• Adjustable seat
		• Hydraulic bypass valves
		• Rollover Protection System (ROPS)
		• Mower deck flow baffle
		Refer to the <i>Operator's Manual</i> to point out safety procedures, operation, and maintenance procedures.
		Review the warranty statement as shown in the <i>Operator's Manual</i> .
		Describe the post sale service procedures for your store.
		Assist the customer in filling out and mailing the registration card or register online at <a href="http://www.Toro.com">www.Toro.com</a>
		Make sure that the customer receives the <i>Operator's Manual</i> , <i>Engine Owner's Manual</i> , <i>Set Up Instructions</i> , and operator training material.
		Make sure the customer knows the <i>Parts Catalog</i> is available at <a href="http://www.Toro.com">www.Toro.com</a> .
		Assist the customer in loading the mower.

**Note:** When you, the dealer representative, have finished delivering the machine to the customer, sign and date in the space provide below and keep a copy of this page for dealer records.

Signature: \_\_\_\_\_ Date: \_\_\_\_\_

Signature: \_\_\_\_\_ Date: \_\_\_\_\_