



**Count on it.**

Form No. 380-0024 Rev A

# Parts Catalog

## 760 Series Golf Sprinkler

Model No. 760 Series

# Ordering Replacement Parts

To order replacement parts, please supply the part number, the quantity, and the description of each part desired.

## Understanding Reference Numbers

Each identified part in an illustration has a reference number. The reference number for a part also appears in the parts list, along with other information about the part.

This catalog uses two special reference number formats, one to indicate parts in a service assembly and another to indicate the quantity of a given part in an illustration.

## Service Assembly Reference Numbers

Parts in service assemblies have reference numbers in the form a:b. The a represents the reference number of the entire service assembly and the b represents a sequential number unique to each part within the service assembly.

For example, a wheel assembly might be identified by reference number 6, the tire by 6:1, the valve by 6:2, and the wheel by 6:3. When you order the assembly identified by reference number 6, you receive all parts identified by reference numbers 6:1, 6:2, and 6:3. However, you may also order any part individually. Reference numbers of this type appear in illustration and in parts lists.

## Reference Numbers Indicating Quantity

In an illustration, if a reference number indicates more than one part, the reference number has the form nX y. The n represents the quantity of the part, the X is the multiplication symbol, and the y represents the reference number.

For example, in an illustration, the reference number 2X 37 means that two of the parts identified by reference number 37 are indicated.

# List of Abbreviations

**AR:** as required

**ASM:** assembly

**BBC:** blade brake control

**BHTF:** button head thread forming

**CARR:** carriage

**CCW:** counter clockwise

**CW:** clockwise

**DEG:** degrees

**DPA:** Dual Point Adjustment

**ECM:** electronic control module

**EXT:** external

**FH:** flat head

**GA:** gauge

**HD:** heavy-duty

**HF:** hex flange

**HH:** hex head

**HHF:** hex head flange

**HHFTF:** hex head flange thread forming

**HJ:** hex jam

**HLH:** hex lag head

**HOC:** height-of-cut

**HSBH:** hex socket button head

**HSFH:** hex socket flat head

**HSH:** hex socket head

**HWH:** hex washer head

**HWHTF:** hex washer head thread forming

**HYD:** hydraulic

**LH:** left hand

**LP:** Liquid Propane

**NI:** nylon insert

**NPTF:** national pipe thread fine

**PFH:** phillips flat head

**PPH:** phillips pan head

**PPHTF:** phillips pan head thread forming

**PRH:** phillips round head

**PTH:** phillips truss head

**PTO:** power-take-off

**RH:** right hand

**ROPS:** roll-over protection system

**RRB:** rear roller brush

**SFH:** slotted fillister head

**SHH:** slotted hex head

**SHWH:** slotted hex washer head

**SPH:** slotted pan head

**SQH:** square head

**SRH:** slotted round head

**STD:** standard

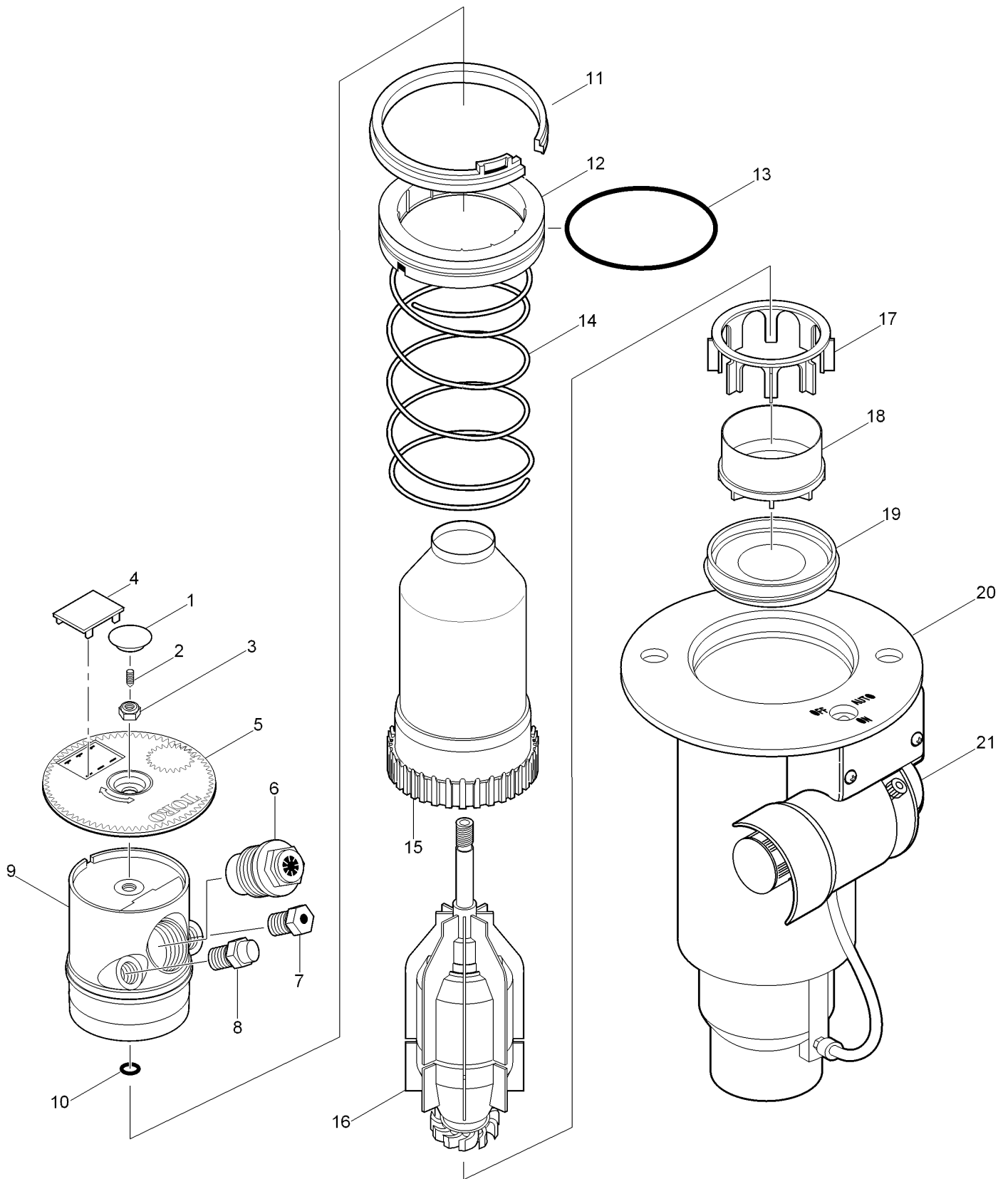
**TAP:** self tapping

**TTH:** torx truss head

Contents

760 Series Golf Sprinkler ..... 4

# 760 Series Golf Sprinkler



## 760 Series Golf Sprinkler (continued)

<i>Ref.</i>	<i>Part Number</i>	<i>Qty.</i>	<i>Description</i>	<i>Ref.</i>	<i>Part Number</i>	<i>Qty.</i>	<i>Description</i>
1	89-1220	1	Plug, Adjustment	21		1	Pilot Valve Assembly (See Pilot Valve Assembly Section) ◻ ♦
2	363-3150	1	Screw, Set, 10-32 X .250 (Part Circle Models Only)		363-3125		Plug, 1/2" Npt ● ▲
3	363-4039	1	Nut, 5/16-24, W/ Nylon Lock		102-0840		Nozzle, Inner/Intermediate, Blank, Red ● ▲
4	89-1589	1	Plug, Cap (Black)		89-4651		Nozzle, Inner, 82 Yellow (Pre-November 2003) ● ▲
5	89-1952	1	Cap, 760		89-3942		Nozzle, Inner, 83 Blue (Pre-November 2003) ● ▲
5	89-8287	1	Cap, Effluent		89-4652		Nozzle, Inner, 84 Brown (Pre-November 2003) ● ▲
6	89-1925	1	Nozzle, Main, 62 Yellow		89-3729		Nozzle, Inner, 85 Orange (Pre-November 2003) ● ▲
6	89-1926	1	Nozzle, Main, 63 Blue		89-4653		Nozzle, Inner, 86 Green (Pre-November 2003) ● ▲
6	89-1927	1	Nozzle, Main, 64 Brown		89-1879		Nozzle, Inner, 87 Gray (Pre-November 2003) ● ▲
6	89-1928	1	Nozzle, Main, 65 Orange		89-4654		Nozzle, Inner, 88 Black (Pre-November 2003) ● ▲
6	89-1929	1	Nozzle, Main, 66 Green		89-4649		Restrictor, (82 & 83 Black) (Pre-November 2003) ● ▲
6	89-1930	1	Nozzle, Main, 67 Gray		89-4650		Restrictor, (84-89 White) (Pre-November 2003) ● ▲
6	89-1931	1	Nozzle, Main, 68 Black		YARDMARKYEL10		Yardage Marker, Yellow (10-Sheets Per Pack) ● ▲
7	102-2925	1	Nozzle Assy. Intermediate, Blue (Used W/ #62 Yellow & #63 Blue Mains)		YARDMARKLAV10		Yardage Marker, Lavender (For Non-Potable Water Applications) ● ▲
7	102-0608	1	Nozzle, Intermediate, Orange (Used W/ #64 Brown Main)		995-08		Valve Removal Tool ■ ▲
7	102-0609	1	Nozzle, Intermediate, Gray (Used W/ #65 Orange Main)		995-15		Selector Tool (Flag Key) ■ ▲
7	102-0610	1	Nozzle, Intermediate, Red (Use W/ #66 Green & #67 Gray Mains)		995-55		Riser Hold-Up Tool ■ ▲
7	102-2929	1	Nozzle, Intermediate, Beige (Used W/ #68 Black Main)		995-76		Valve Insertion Tool ■ ▲
8	102-2980	1	Nozzle Assy. Inner, Red (W/ Restrictor)		995-79		Nut Driver, 7/16" (For Inner And Intermediate Nozzles) ■ ▲
9	89-1906	1	Nozzle Base Assy., 760/780		995-80		Nut Driver, 1/2" (For 363-4039 Lock Nut) ■ ▲
9	102-0057	1	Nozzle Base Assy., 760/780 W/Back Nozzle (Includes 89-3729 Nozzle, Inner 85 Orange & 89-4650 Restrictor)		995-81		Nut Driver, 9/16" (For Main Nozzle) ■ ▲
10	360-0107	1	O-Ring (0.070 X 0.301 X 0.441)		995-82		Arc Adjustment Tool, 3/32" (T-Handle Hex Wrench) ■ ▲
11	89-1385	1	Snap Ring, Riser		995-83		Multi-Purpose Tool ■ ▲
12	102-0134	1	Retainer, Seal		995-85		Riser Removal Tool ■ ▲
13	363-4102	1	O-Ring, Paraffin As-568 232		995-100		Valve Snap Ring Pliers With Screen Remover ■ ▲
14	89-6307	1	Spring, Return		118-0954	1	Riser Hold-Up Tool, Red ■ ▲
15	89-6360	1	Riser Assembly				
16	102-4497	1	Drive Assy., Part Circle (Pc), 12-Pack				
16	102-4496	1	Drive Assy., Full Circle (Fc), 12-Pack				
17	89-1958	1	Stator Support				
18	89-1957	1	Stator, Variable				
19	89-1588	1	Screen				
20		1	Body Assembly (See Golf Sprinkler Body Assembly Section) ◻ ♦				

● SERVICE ITEMS

▲ Not illustrated

◻ See Pilot Valve Assembly Section.

■ SERVICE TOOLS

♦ Not serviced separately

○ See Golf Sprinkler Body Assembly Section.



**Count on it.**