



Count on it.

Parts Catalog

670 Series Golf Sprinkler

Model No. 670 Series

Ordering Replacement Parts

To order replacement parts, please supply the part number, the quantity, and the description of each part desired.

Understanding Reference Numbers

Each identified part in an illustration has a reference number. The reference number for a part also appears in the parts list, along with other information about the part.

This catalog uses two special reference number formats, one to indicate parts in a service assembly and another to indicate the quantity of a given part in an illustration.

Service Assembly Reference Numbers

Parts in service assemblies have reference numbers in the form a:b. The a represents the reference number of the entire service assembly and the b represents a sequential number unique to each part within the service assembly.

For example, a wheel assembly might be identified by reference number 6, the tire by 6:1, the valve by 6:2, and the wheel by 6:3. When you order the assembly identified by reference number 6, you receive all parts identified by reference numbers 6:1, 6:2, and 6:3. However, you may also order any part individually. Reference numbers of this type appear in illustration and in parts lists.

Reference Numbers Indicating Quantity

In an illustration, if a reference number indicates more than one part, the reference number has the form nX y. The n represents the quantity of the part, the X is the multiplication symbol, and the y represents the reference number.

For example, in an illustration, the reference number 2X 37 means that two of the parts identified by reference number 37 are indicated.

List of Abbreviations

AR: as required

ASM: assembly

BBC: blade brake control

BHTF: button head thread forming

CARR: carriage

CCW: counter clockwise

CW: clockwise

DEG: degrees

DPA: Dual Point Adjustment

ECM: electronic control module

EXT: external

FH: flat head

GA: gauge

HD: heavy-duty

HF: hex flange

HH: hex head

HHF: hex head flange

HHFTF: hex head flange thread forming

HJ: hex jam

HLH: hex lag head

HOC: height-of-cut

HSBH: hex socket button head

HSFH: hex socket flat head

HSH: hex socket head

HWH: hex washer head

HWHTF: hex washer head thread forming

HYD: hydraulic

LH: left hand

LP: Liquid Propane

NI: nylon insert

NPTF: national pipe thread fine

PFH: phillips flat head

PPH: phillips pan head

PPHTF: phillips pan head thread forming

PRH: phillips round head

PTH: phillips truss head

PTO: power-take-off

RH: right hand

ROPS: roll-over protection system

RRB: rear roller brush

SFH: slotted fillister head

SHH: slotted hex head

SHWH: slotted hex washer head

SPH: slotted pan head

SQH: square head

SRH: slotted round head

STD: standard

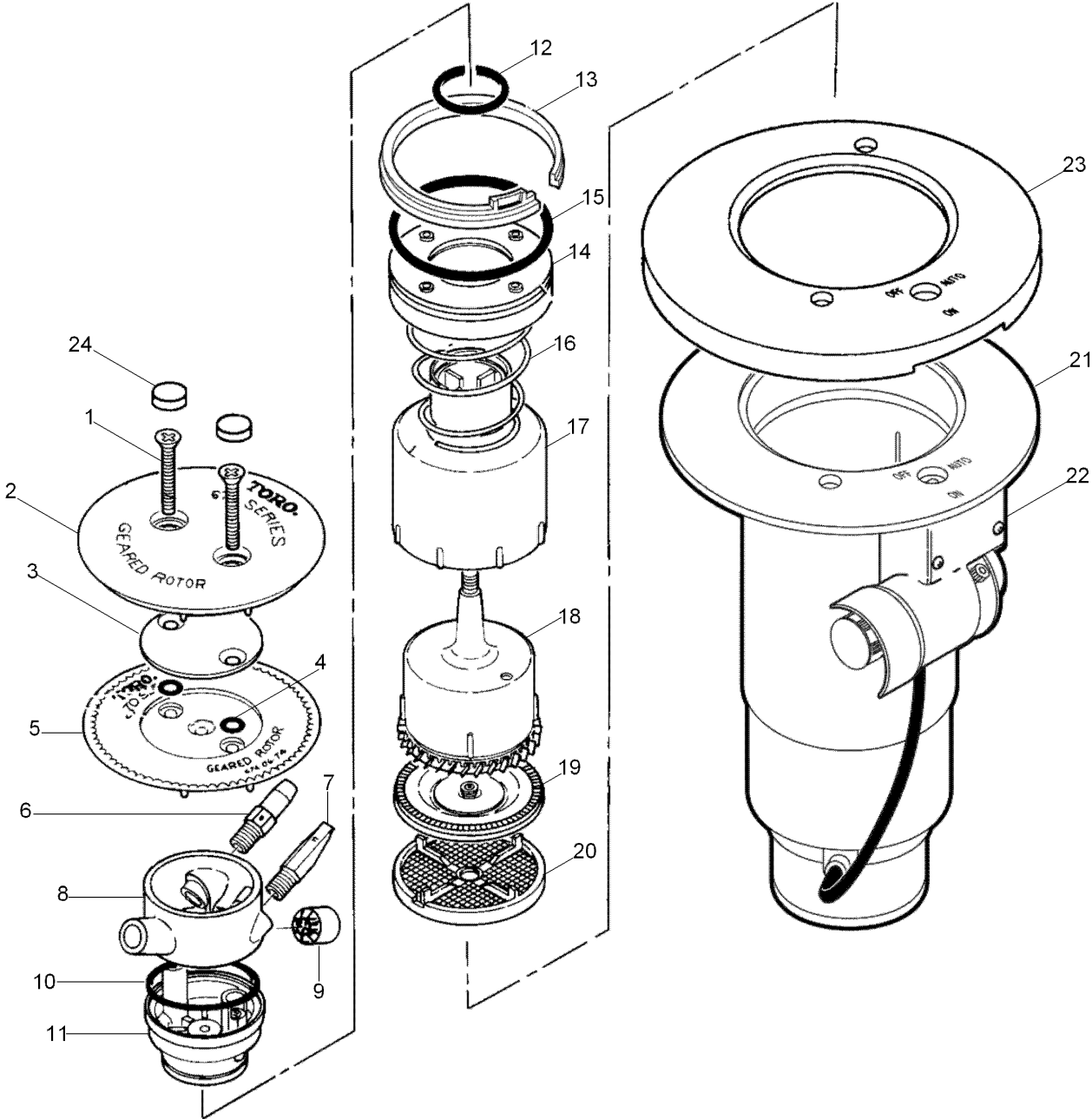
TAP: self tapping

TTH: torx truss head

Contents

670 Series Golf Sprinkler 4

670 Series Golf Sprinkler



670 Series Golf Sprinkler (continued)

<i>Ref.</i>	<i>Part Number</i>	<i>Qty.</i>	<i>Description</i>
1	363-1571	2	Screw, Machine, 1/4-20 X 2", Sst
2	9-5633	1	Cap Assy, Rubber Cover
3	9-3735	1	Plate, Cap, Insert
4	360-0107	2	O-Ring (0.070 X 0.301 X 0.441)
5	35-0530	1	Cap, Sprinkler, 670
6	9-2793	1	Nozzle, "0" Intermediate
7	9-7177	1	Nozzle, "f" Inner
8	9-7962	1	Ring, Nozzle Assy., #70 (5/16")
8	9-7963	1	Ring, Nozzle Assy., #71 (11/32")
8	9-7964	1	Ring, Nozzle Assy., #72 (3/8")
8	9-7965	1	Ring, Nozzle Assy., #73 (13/32")
8	9-7966	1	Ring, Nozzle Assy., #74 (7/16")
9	89-5813	1	Straightener, Stream
10	360-0398	1	O-Ring
11	9-7407	1	Nozzle Base Assy.
12	9-5075	1	O-Ring, Housing, Outer
13	35-6119	1	Snap Ring, Riser
14	9-5055	1	Spring Retainer & Plate Assembly
15	363-4103	1	O-Ring, Body
16	9-3737	1	Spring, Return
17	9-3874	1	Drive Assy., Outer Housing
18	9-3908	1	Drive Assy. (Includes Item 17)
19	9-4091	1	Stator, Fixed (Used W/ #70 & #71 Nozzle)

<i>Ref.</i>	<i>Part Number</i>	<i>Qty.</i>	<i>Description</i>
19	9-4529	1	Stator, Variable (Used W/ #72, #73 & #74 Nozzles)
20	35-3611	1	Screen, Debris
21		1	Body Assembly (See Golf Sprinkler Body Assembly Section) ◻ ◆
22		1	Pilot Valve Assembly (See Pilot Valve Assembly Section) ◻ ◆
23	9-5355	1	Rubber Cover, Rounded Flange,
24	3-2518 89-0475	1	Plug-Cap , Rubber
	9-7415		670 Nozzle Assy., #70 (Includes Items 1 & 3-12) ●▲
	9-7416		670 Nozzle Assy., #71 (Includes Items 1 & 3-12) ●▲
	9-7416		670 Nozzle Assy., #72 (Includes Items 1 & 3-12) ●▲
	9-7417		670 Nozzle Assy., #73 (Includes Items 1 & 3-12) ●▲
	9-7418		670 Nozzle Assy., #74 (Includes Items 1 & 3-12) ●▲
	35-3599		Stream Straightener, Debris Resistant ●▲
	670-01		Kit, Rubber Cover (Includes Items 2, 23 & 24) ●▲
	995-09		Valve Removal Tool ■▲
	995-15		Selector Tool (Flag Key) ■▲
	995-83		Multi-Purpose Tool ■▲
	995-100		Valve Snap Ring Pliers With Screen Remover ■▲
	995-101		Valve Insertion Tool ■▲

● SERVICE ITEMS

▲ Not illustrated

◻ See Pilot Valve Assembly Section.

■ SERVICE TOOLS

◆ Not serviced separately

◻ See Golf Sprinkler Body Assembly Section.



Count on it.