



Count on it.

Parts Catalog

72in Guardian® Recycler® Mower
Groundsmaster® 3280-D Traction Unit
Model No. 31335—Serial No. 312000001 and Up

Ordering Replacement Parts

To order replacement parts, please supply the part number, the quantity, and the description of each part desired.

Understanding Reference Numbers

Each identified part in an illustration has a reference number. The reference number for a part also appears in the parts list, along with other information about the part.

This catalog uses two special reference number formats, one to indicate parts in a service assembly and another to indicate the quantity of a given part in an illustration.

Service Assembly Reference Numbers

Parts in service assemblies have reference numbers in the form a:b. The a represents the reference number of the entire service assembly and the b represents a sequential number unique to each part within the service assembly.

For example, a wheel assembly might be identified by reference number 6, the tire by 6:1, the valve by 6:2, and the wheel by 6:3. When you order the assembly identified by reference number 6, you receive all parts identified by reference numbers 6:1, 6:2, and 6:3. However, you may also order any part individually. Reference numbers of this type appear in illustration and in parts lists.

Reference Numbers Indicating Quantity

In an illustration, if a reference number indicates more than one part, the reference number has the form nX y. The n represents the quantity of the part, the X is the multiplication symbol, and the y represents the reference number.

For example, in an illustration, the reference number 2X 37 means that two of the parts identified by reference number 37 are indicated.

List of Abbreviations

AR: as required

ASM: assembly

BBC: blade brake control

BHTF: button head thread forming

CARR: carriage

CCW: counter clockwise

CW: clockwise

DEG: degrees

DPA: Dual Point Adjustment

ECM: electronic control module

EXT: external

FH: flat head

GA: gauge

HD: heavy-duty

HF: hex flange

HH: hex head

HHF: hex head flange

HHFTF: hex head flange thread forming

HJ: hex jam

HLH: hex lag head

HOC: height-of-cut

HSBH: hex socket button head

HSFH: hex socket flat head

HSH: hex socket head

HWH: hex washer head

HWTF: hex washer head thread forming

HYD: hydraulic

LH: left hand

LPG: Liquid Propane Gas

NI: nylon insert

NPTF: national pipe thread fine

PFH: phillips flat head

PPH: phillips pan head

PPHTF: phillips pan head thread forming

PRH: phillips round head

PTH: phillips truss head

PTO: power-take-off

RH: right hand

ROPS: roll-over protection system

RRB: rear roller brush

SFH: slotted fillister head

SHH: slotted hex head

SHWH: slotted hex washer head

SPH: slotted pan head

SQH: square head

SRH: slotted round head

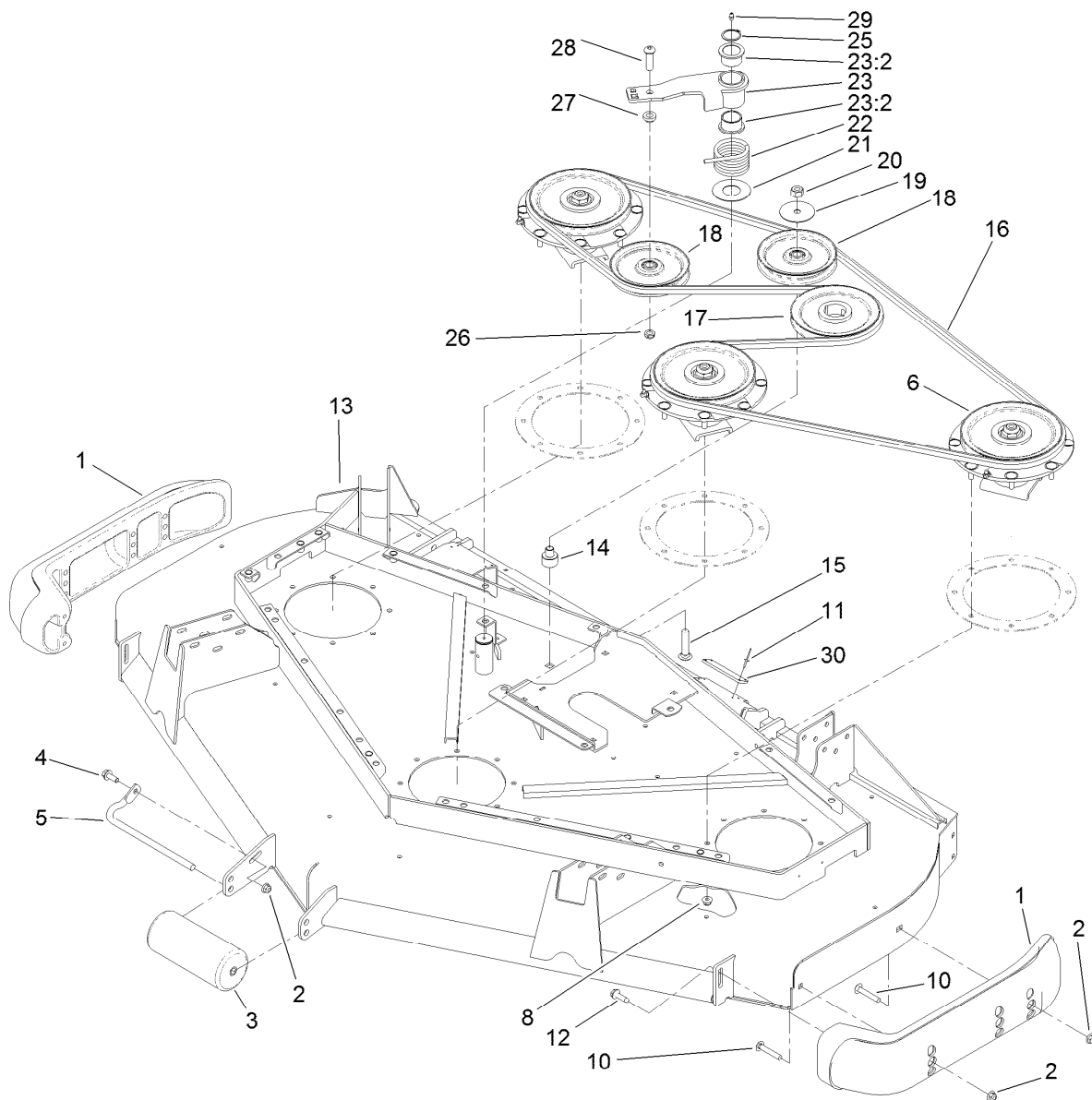
STD: standard

TAP: self tapping

TTH: torx truss head

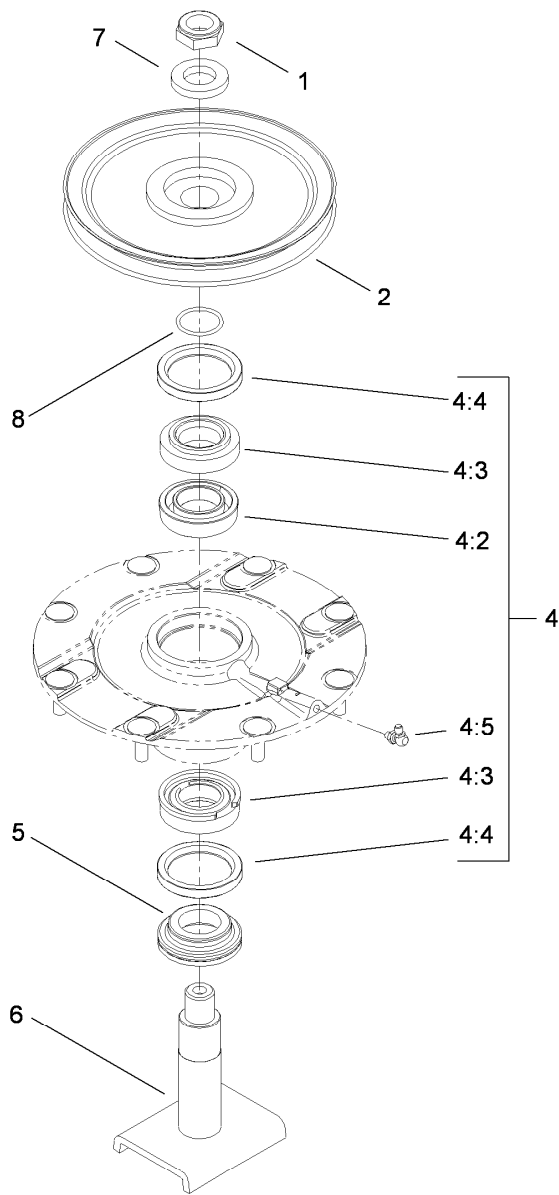
Contents

Roller, Belt and Pulley Assembly	4
Low Driven Spindle Assembly No. 119-4776.....	5
Deck Assembly No. 121-6423	6
Caster and Lift Arm Assembly	7
Left Hand Lift Arm Assembly No. 117-0806	9
Right Hand Lift Arm Assembly No. 117-0800.....	10
Gearbox and Cover Assembly	11
Gear Box Assembly No. 108-1370	12
Chamber and Blade Assembly.....	13



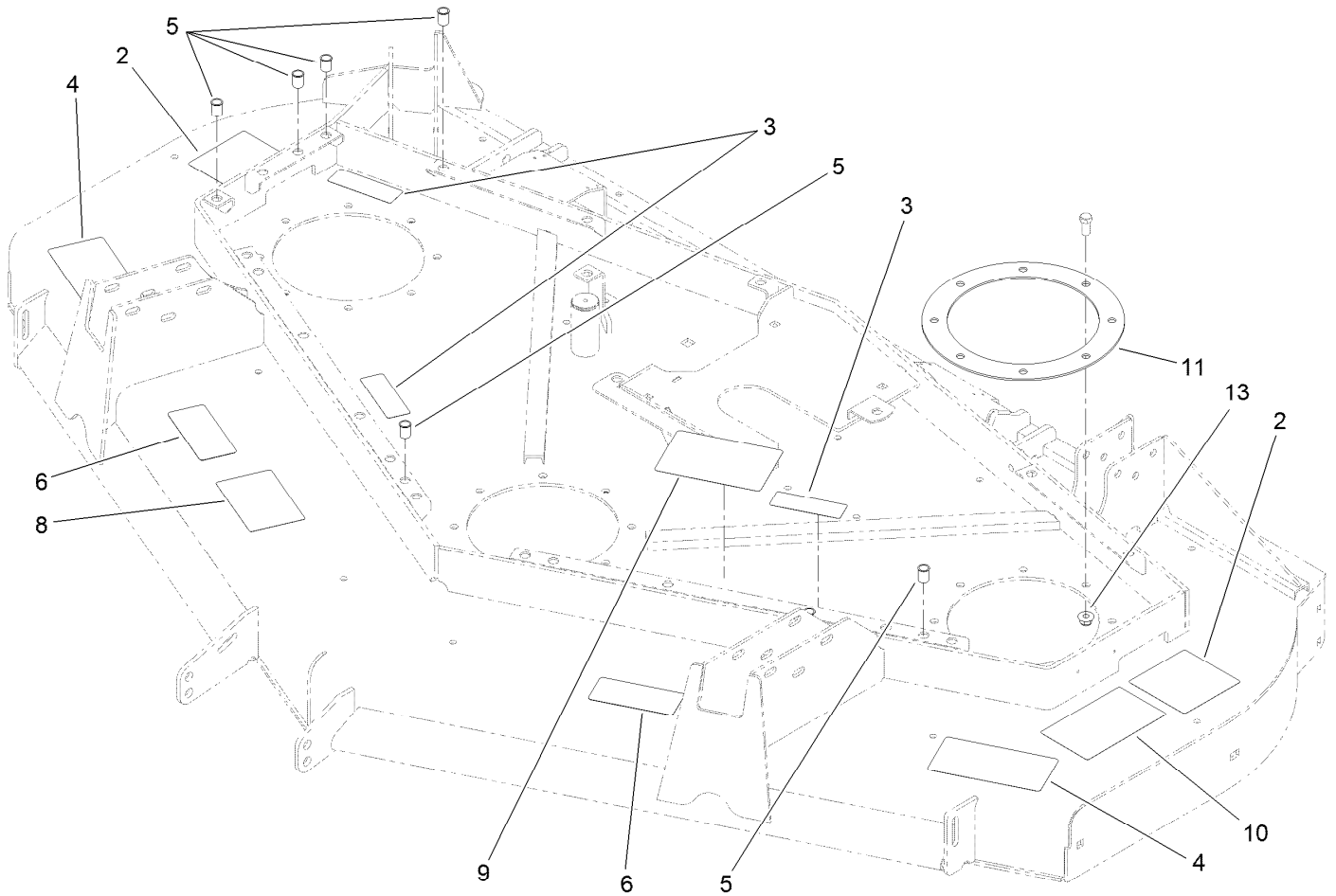
Roller, Belt and Pulley Assembly

Ref.	Part Number	Qty.	Description	Ref.	Part Number	Qty.	Description
1	112-1479	2	Skid-Bumper, Deck	17	107-4725	1	Pulley
2	104-8301	5	Nut-Flange, NI	18	01-268-0160	2	Pulley-Idler
3	68-6710	1	Roller	19	100-3102	1	Washer-Flat
4	3234-42	1	Screw-HHF	20	3296-23	1	Nut-Lock, NI
5	68-6840	1	Shaft-Roller	21	108-1926	1	Washer
6	119-4776	3	Low-Driven Spindle ASM	22	108-1921	1	Spring-Torsion
8	104-8301	24	Nut-Flange, NI	23	108-1930	1	Idler Arm ASM
10	3231-33	4	Screw-CARR	23:2	93-4510	2	Bushing-Caster
11	3269-24	8	Rivet	25	32120-84	1	Ring-Snap, External
12	9136144	2	Screw-HWHTF	26	3296-45	1	Nut-Lock, NI
13	121-6423	1	Deck ASM	27	108-1924	1	Spacer-Idler
14	108-1908	1	Spacer-Idler	28	108-1993	1	Screw-HSBH
15	3233-34	1	Screw-CARR	29	302-5	1	Fitting-Grease
16	107-4738	1	Belt-HH	30	108-1914	2	Pad-Bumper



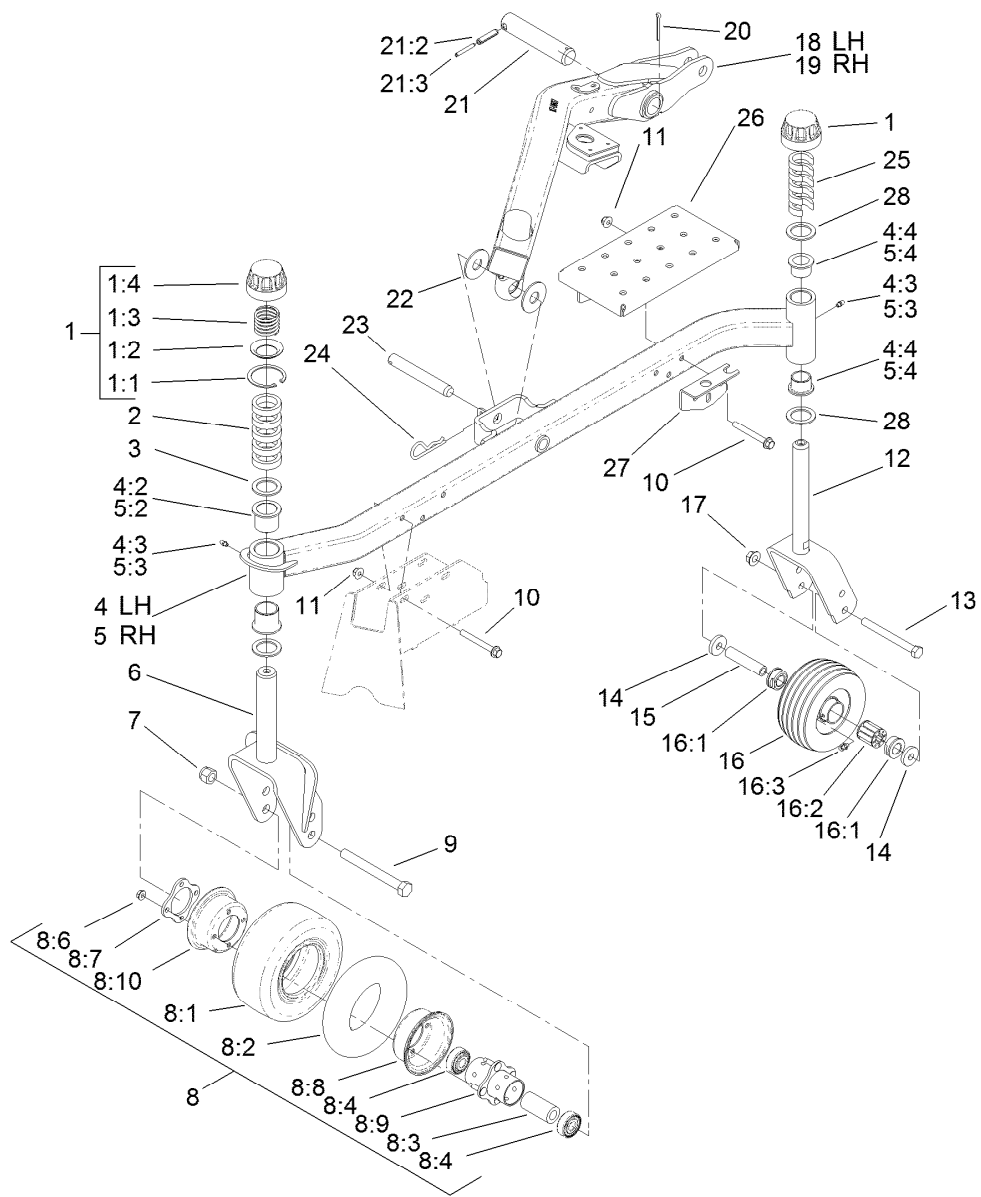
Low Driven Spindle Assembly No. 119-4776

<i>Ref.</i>	<i>Part Number</i>	<i>Qty.</i>	<i>Description</i>
1	3296-60	1	Nut-Lock, NI
2	104-3546	1	Pulley-Driven, Low
4	119-4775	1	Spindle Housing ASM
4:2	104-3549	1	Bearing Spacer Set
4:3	110-8297	1	Bearing ASM
4:4	253-154	2	Seal-Oil
4:5	302-60	1	Fitting-Grease
5	69-6950	1	Spacer-Shaft, Spindle
6	104-3554	1	Spindle Shaft ASM
7	104-8322	1	Washer-Hardened
8	106-7159	1	O-Ring



Deck Assembly No. 121-6423

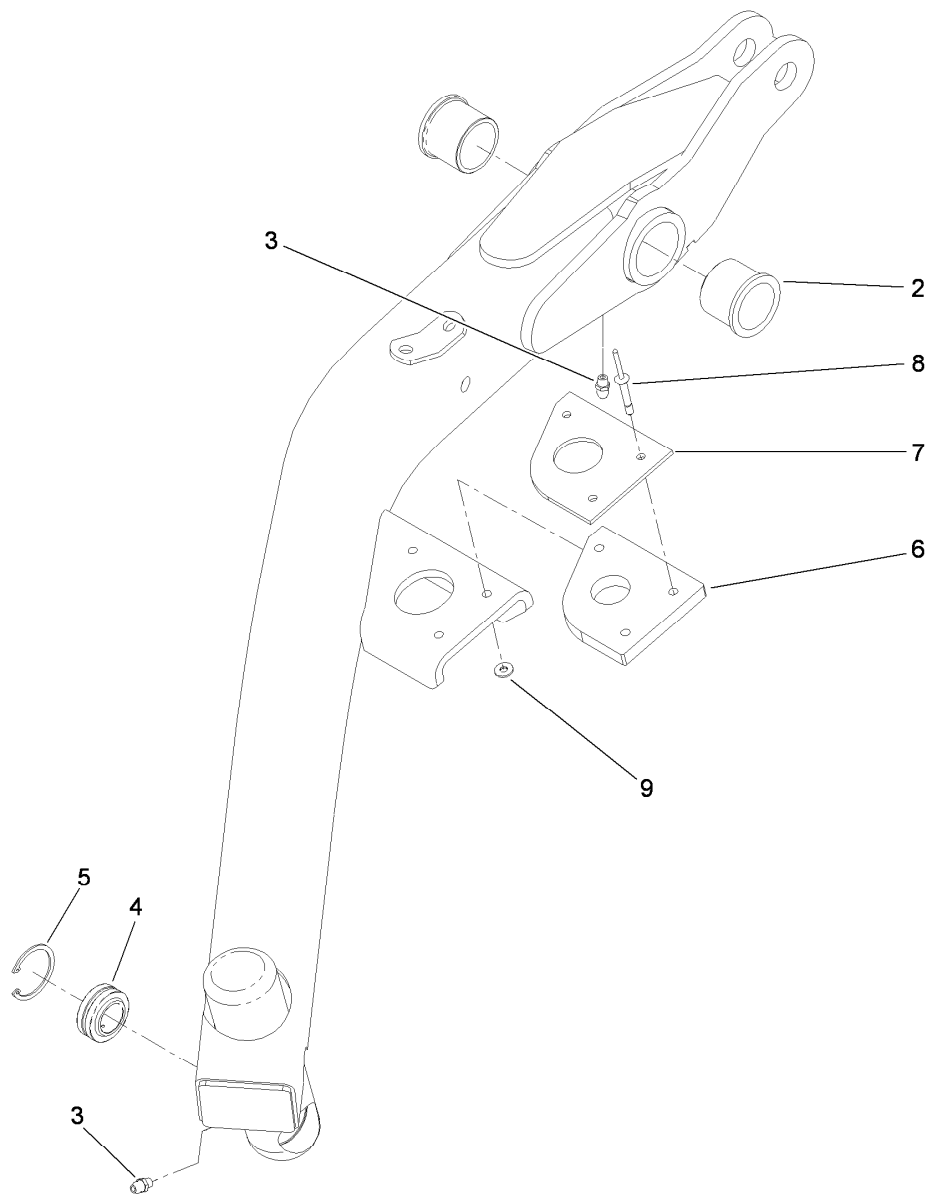
<i>Ref.</i>	<i>Part Number</i>	<i>Qty.</i>	<i>Description</i>
2	120-6604	2	Decal-Danger
3	117-4979	4	Decal-Warning, Shields (Ce)
4	100-5622	2	Decal-HOC
5	32148-9	7	Insert-Nut
6	93-7818	2	Decal-Torque, Blade Bolt
8	57-0280	1	Decal
9	108-1988	1	Decal-Routing, Belt
10	115-4505	1	Decal-Warning
11	120-6603-03	3	Ring-Doubler
13	104-8301	6	Nut-Flange, NI



Caster and Lift Arm Assembly (continued)

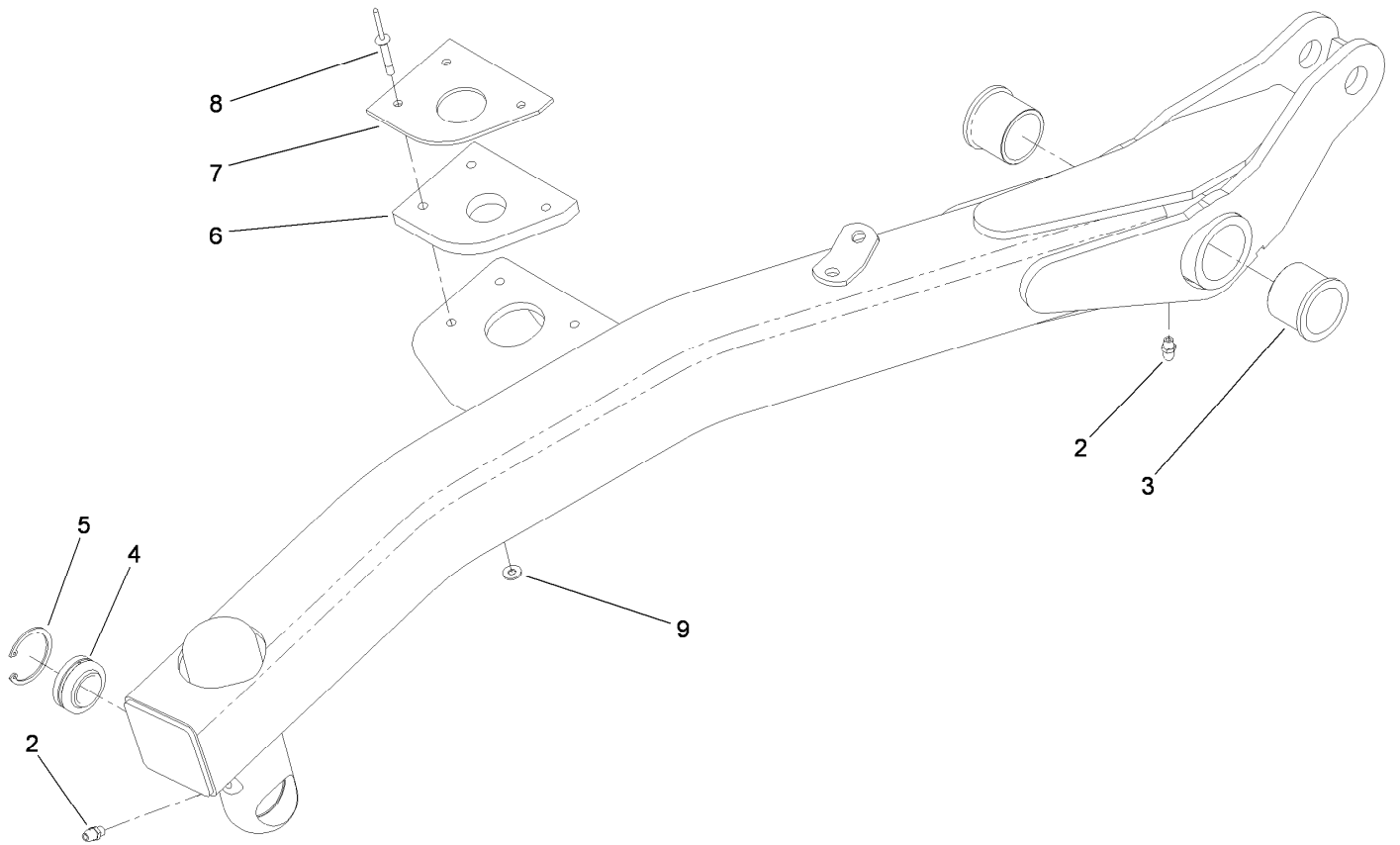
Ref.	Part Number	Qty.	Description
21	98-2330	2	Pivot Pin ASM
21:2	32121-67	1	Pin-Spring
21:3	32121-61	1	Pin-Roll
22	107-7915	4	Washer-Thrust
23	107-7904	2	Pin-Clevis

Ref.	Part Number	Qty.	Description
24	3290-256	2	Pin-Hair
25	99-1283	10	Spacer
26	121-6418-01	1	Deck Step ASM
27	121-6411-01	1	Bracket-Mounting, Step
28	3-6781	4	Washer-Thrust



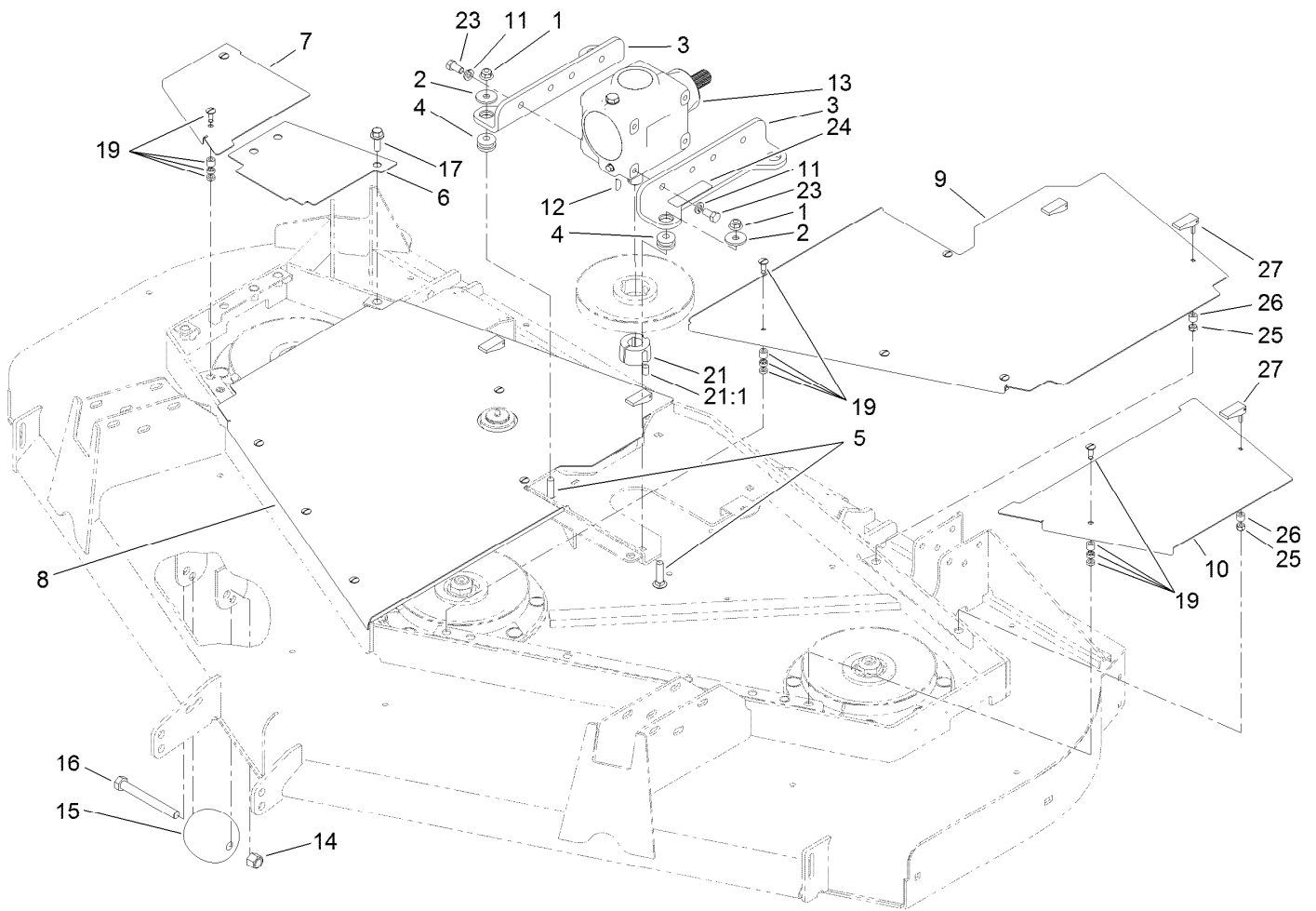
Left Hand Lift Arm Assembly No. 117-0806

<i>Ref.</i>	<i>Part Number</i>	<i>Qty.</i>	<i>Description</i>
2	256-268	2	Bushing
3	302-5	2	Fitting-Grease
4	105-7441	1	Bearing-Spherical
5	32151-34	1	Ring-Retaining
6	119-2200	1	Pad-Rubber, Rear HOC
7	119-2230	1	Pad-Plastic, Rear HOC
8	110-0606	3	Rivet-Blind
9	3269-26	3	Washer-Plain



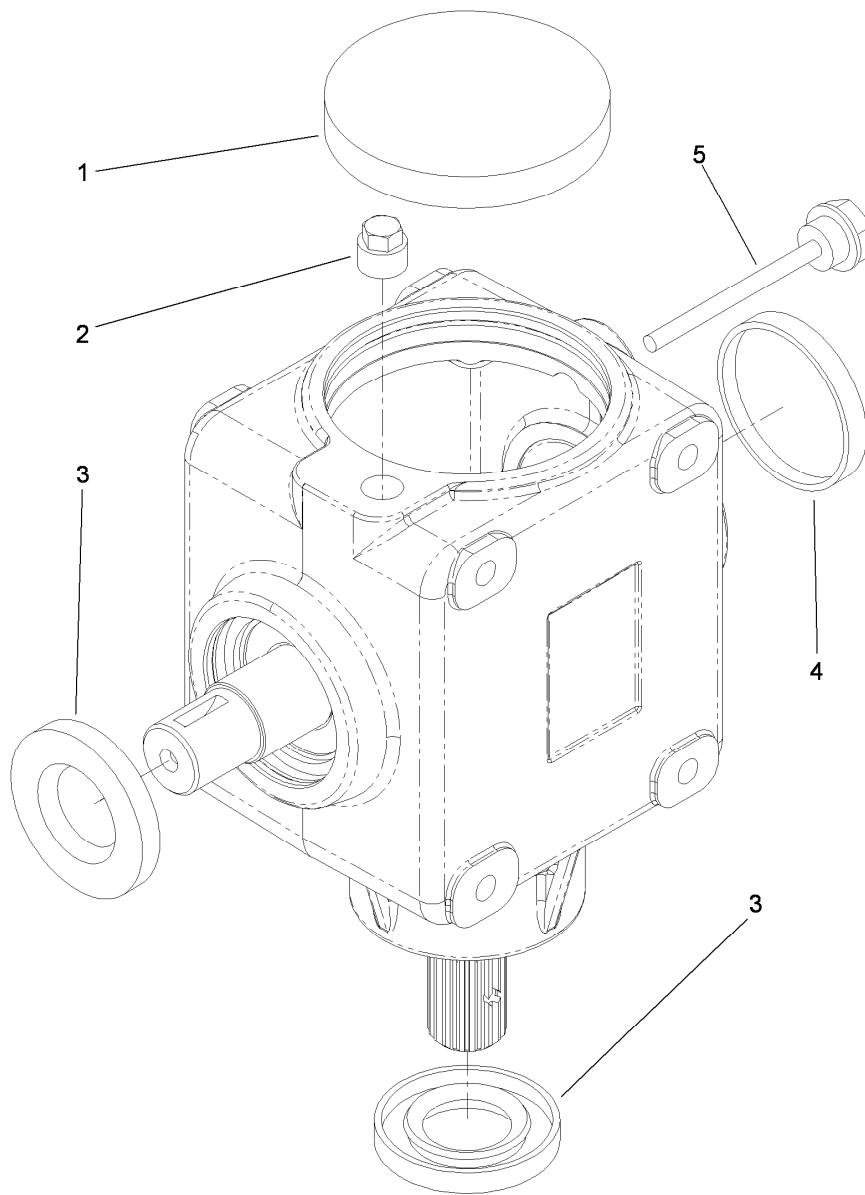
Right Hand Lift Arm Assembly No. 117-0800

<i>Ref.</i>	<i>Part Number</i>	<i>Qty.</i>	<i>Description</i>
2	302-5	2	Fitting-Grease
3	256-268	2	Bushing
4	105-7441	1	Bearing-Spherical
5	32151-34	1	Ring-Retaining
6	119-2200	1	Pad-Rubber, Rear HOC
7	119-2230	1	Pad-Plastic, Rear HOC
8	110-0606	3	Rivet-Blind
9	3269-26	3	Washer-Plain



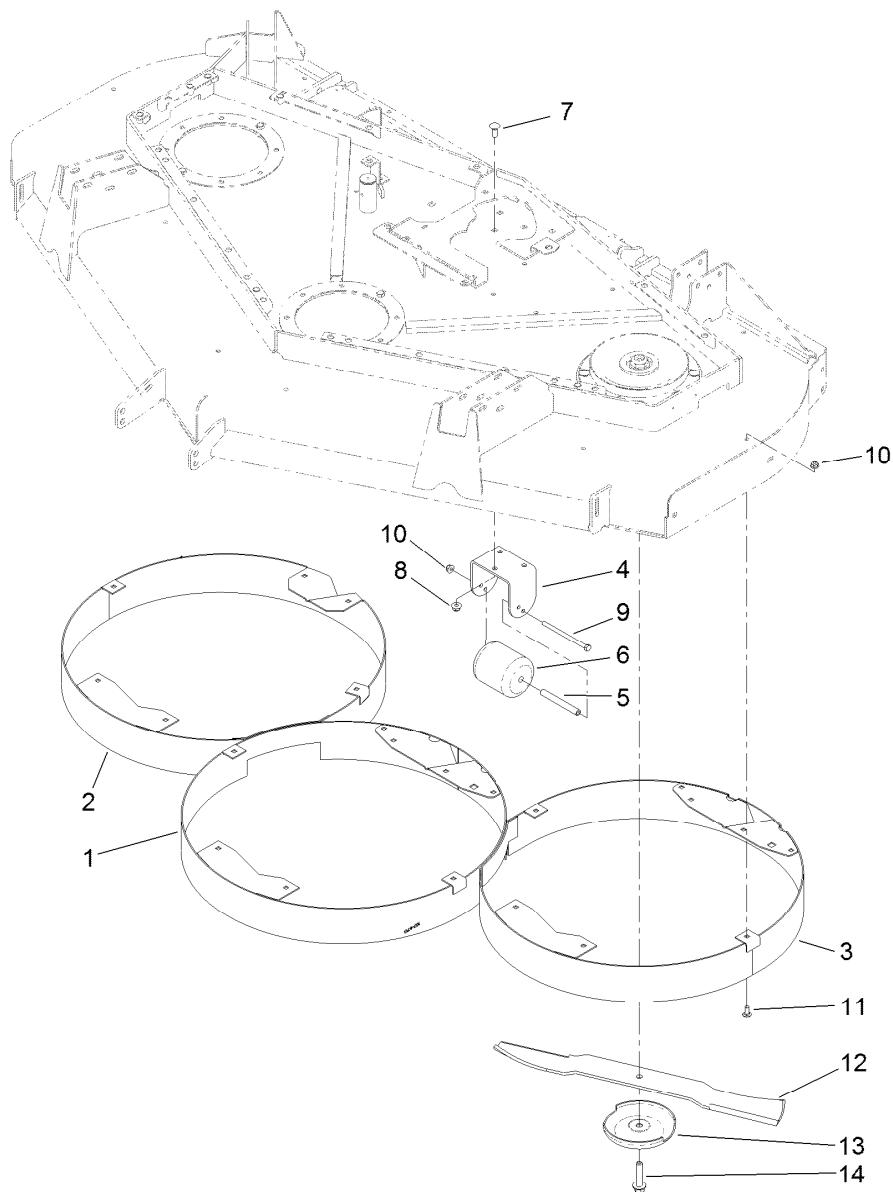
Gearbox and Cover Assembly

<i>Ref.</i>	<i>Part Number</i>	<i>Qty.</i>	<i>Description</i>	<i>Ref.</i>	<i>Part Number</i>	<i>Qty.</i>	<i>Description</i>
1	104-8301	4	Nut-Flange, NI	13	108-1370	1	Gearbox Replacement Kit
2	63-8410	4	Washer	14	3296-23	2	Nut-Lock, NI
3	108-1928-03	2	Bracket-Gearbox	15	29-4820	2	Roller
4	63-9750	4	Mount	16	325-18	2	Screw-HH
5	3231-26	4	Screw-CARR	17	3234-42	3	Screw-HHF
6	108-1341-03	1	Cover-Deck, RH Rear (Outer)	19	117-6989	4	Fractional Turn Oval Head Stud ASM
7	119-4808-03	1	Cover-Deck, RH Front (Outer)	21	23-1640	1	Bushing-Taperlock
8	119-4807-03	1	Cover-Deck, RH (Inner)	21:1	3247-4	2	Screw-Set
9	119-4806-03	1	Cover-Deck, LH (Inner)	23	323-4	4	Screw-HH
10	119-4805-03	1	Cover-Deck, LH (Outer)	24	93-6697	1	Decal-Lube
11	3253-21	4	Washer-Lock	25	1-804254	13	Nut-Lock, HH
12	3257-5	1	Key-Woodruff	26	106-6778	13	Bushing-Latch, Swell
				27	106-6777	13	Handle-Latch, Swell



Gear Box Assembly No. 108-1370

<i>Ref.</i>	<i>Part Number</i>	<i>Qty.</i>	<i>Description</i>
1	107-2932	1	Cap-Oil
2	107-2933	1	Plug
3	117-9247	2	Seal
4	107-2935	1	Cap-Oil
5	107-2936	1	Plug-Filler, Dipstick



Chamber and Blade Assembly

<i>Ref.</i>	<i>Part Number</i>	<i>Qty.</i>	<i>Description</i>
1	107-4713-01	1	Center Chamber ASM
2	107-7916-01	1	RH Recycler Chamber ASM
3	107-7918-01	1	LH Recycler Chamber ASM
4	104-0754-01	1	Bracket-Roller
5	105-4549	1	Spacer-Roller
6	93-4803	1	Roller-Deck
7	3231-2	3	Screw-CARR
8	104-8301	3	Nut-Flange, NI
9	322-29	1	Screw-HH
10	104-8300	19	Nut-Flange, NI
11	3230-23	18	Screw-CARR
12	108-1958-03	3	Blade-Rotary
13	72-9361	3	Cup-Scalp, Anti
14	92-5816	3	Bolt-Blade

Notes:

Notes:



Count on it.