



Count on it.

Parts Catalog

**72in Side-Discharge Mower
Groundsmaster® 3280-D Traction Unit
Model No. 31336—Serial No. 312000001 and Up**



Ordering Replacement Parts

To order replacement parts, please supply the part number, the quantity, and the description of each part desired.

Understanding Reference Numbers

Each identified part in an illustration has a reference number. The reference number for a part also appears in the parts list, along with other information about the part.

This catalog uses two special reference number formats, one to indicate parts in a service assembly and another to indicate the quantity of a given part in an illustration.

Service Assembly Reference Numbers

Parts in service assemblies have reference numbers in the form a:b. The a represents the reference number of the entire service assembly and the b represents a sequential number unique to each part within the service assembly.

For example, a wheel assembly might be identified by reference number 6, the tire by 6:1, the valve by 6:2, and the wheel by 6:3. When you order the assembly identified by reference number 6, you receive all parts identified by reference numbers 6:1, 6:2, and 6:3. However, you may also order any part individually. Reference numbers of this type appear in illustration and in parts lists.

Reference Numbers Indicating Quantity

In an illustration, if a reference number indicates more than one part, the reference number has the form nX y. The n represents the quantity of the part, the X is the multiplication symbol, and the y represents the reference number.

For example, in an illustration, the reference number 2X 37 means that two of the parts identified by reference number 37 are indicated.

List of Abbreviations

AR: as required

ASM: assembly

BBC: blade brake control

BHTF: button head thread forming

CARR: carriage

CCW: counter clockwise

CW: clockwise

DEG: degrees

DPA: Dual Point Adjustment

ECM: electronic control module

EXT: external

FH: flat head

GA: gauge

HD: heavy-duty

HF: hex flange

HH: hex head

HHF: hex head flange

HHFTF: hex head flange thread forming

HJ: hex jam

HLH: hex lag head

HOC: height-of-cut

HSBH: hex socket button head

HSFH: hex socket flat head

HSH: hex socket head

HWH: hex washer head

HWHTF: hex washer head thread forming

HYD: hydraulic

LH: left hand

LPG: Liquid Propane Gas

NI: nylon insert

NPTF: national pipe thread fine

PFH: phillips flat head

PPH: phillips pan head

PPHTF: phillips pan head thread forming

PRH: phillips round head

PTH: phillips truss head

PTO: power-take-off

RH: right hand

ROPS: roll-over protection system

RRB: rear roller brush

SFH: slotted fillister head

SHH: slotted hex head

SHWH: slotted hex washer head

SPH: slotted pan head

SQH: square head

SRH: slotted round head

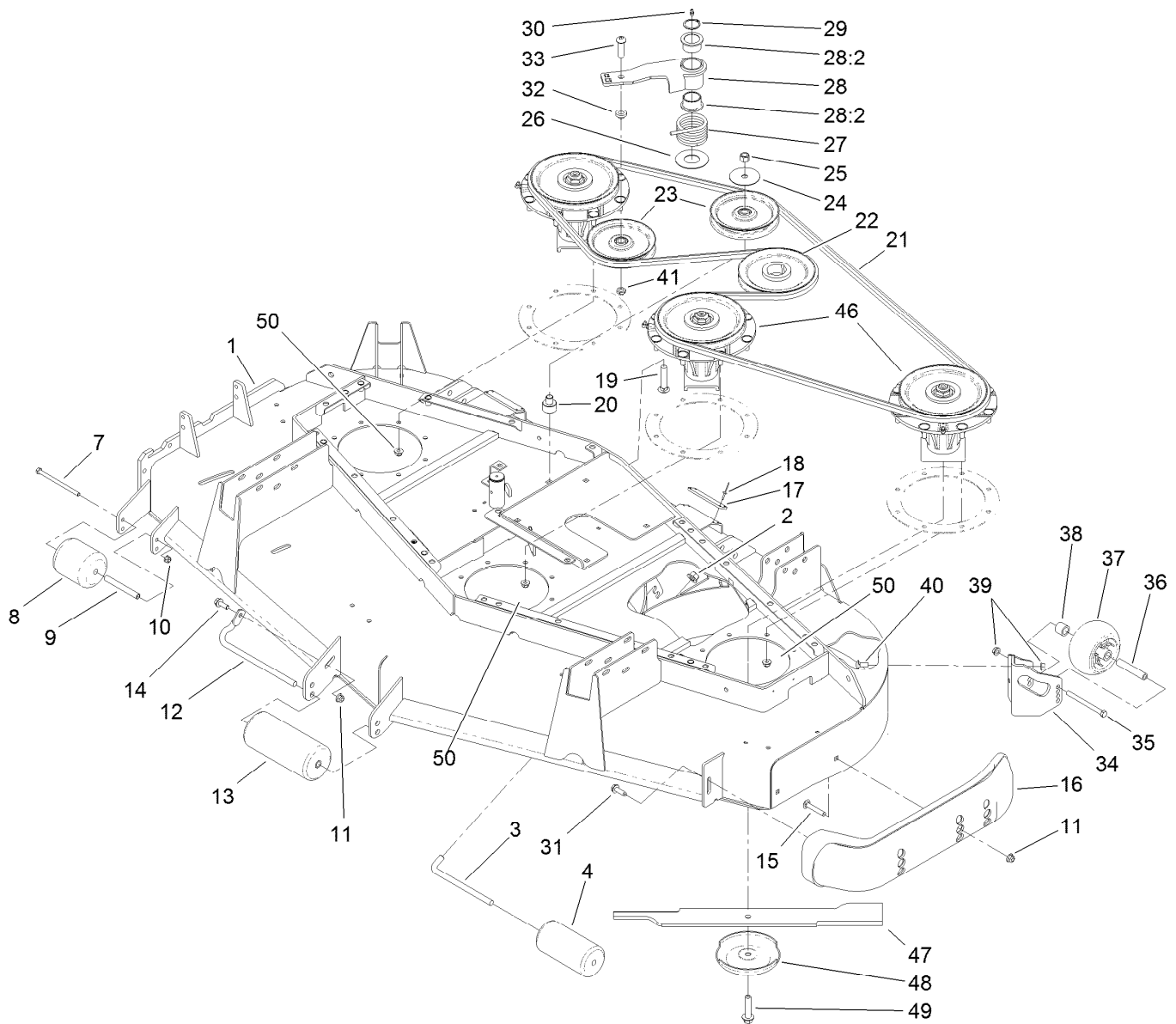
STD: standard

TAP: self tapping

TTH: torx truss head

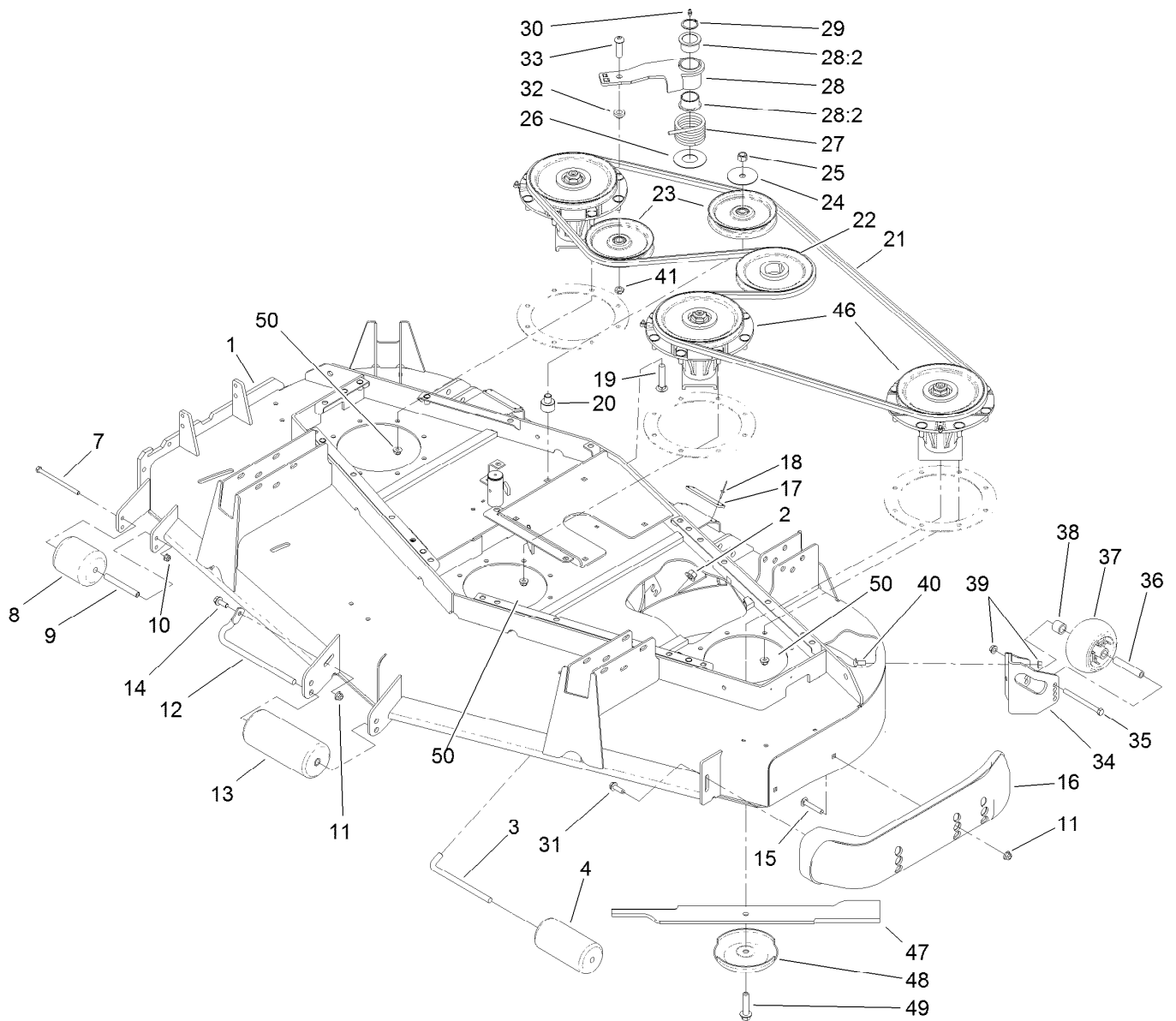
Contents

Roller, Belt and Pulley Assembly	4
Deck Assembly No. 121-6425	6
Spindle Assembly No. 119-4778	7
Caster and Lift Arm Assembly	8
Left Hand Lift Arm Assembly No. 117-0806	10
Right Hand Lift Arm Assembly No. 117-0800	11
Cover, Gearbox and Baffle Assembly	12
Rubber Deflector Assembly No. 108-2792	13
Lever Assembly No. 107-1664	14
Gear Box Assembly No. 108-1370	15



Roller, Belt and Pulley Assembly

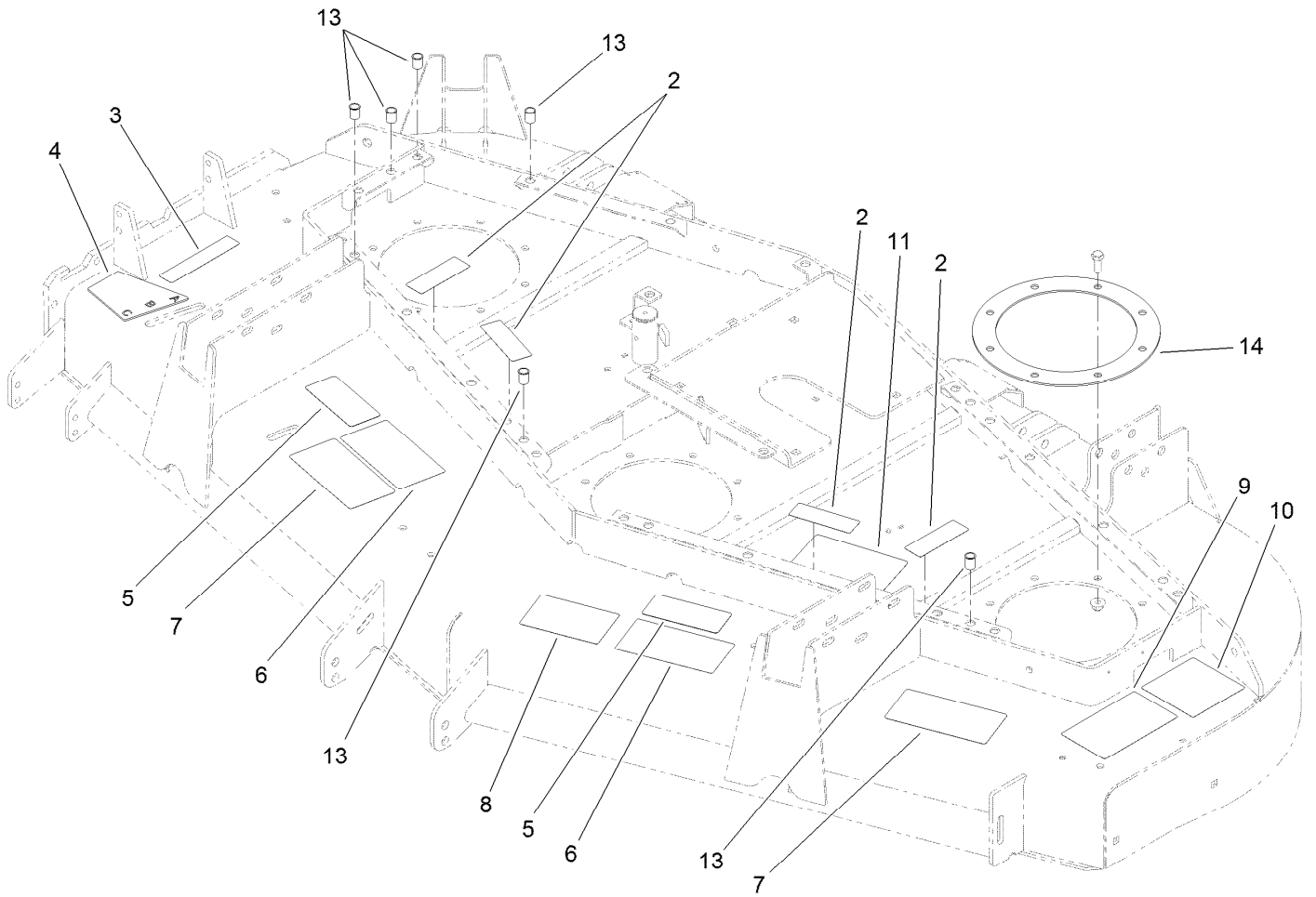
Ref.	Part Number	Qty.	Description	Ref.	Part Number	Qty.	Description
1	121-6425	1	Deck ASM	24	100-3102	1	Washer-Flat
2	99-5107	2	Nut-Lock	25	3296-23	1	Nut-Lock, NI
3	110-9683	2	Shaft-Rear Roller	26	108-1926	1	Washer
4	36-1740	2	Roller-Deck	27	108-1921	1	Spring-Torsion
7	322-29	1	Screw-HH	28	108-1930	1	Idler Arm ASM
8	93-4803	1	Roller-Deck	28:2	93-4510	2	Bushing-Caster
9	105-4549	1	Spacer-Roller	29	32120-84	1	Ring-Snap, External
10	104-8300	1	Nut-Flange, NI	30	302-5	1	Fitting-Grease
11	104-8301	3	Nut-Flange, NI	31	9136144	1	Screw-HWHTF
12	68-6840	1	Shaft-Roller	32	108-1924	1	Spacer-Idler
13	68-6710	1	Roller	33	108-1993	1	Screw-HSBH
14	3234-42	1	Screw-HHF	34	106-7354-01	1	Mount-Wheel, LH
15	3231-33	2	Screw-CARR	35	323-23	1	Screw-HH
16	112-1479	1	Skid-Bumper, Deck	36	98-7912	1	Tube-Spanner
17	108-1914	2	Pad-Bumper	37	1-603299	1	Roller-Scalp, Anti
18	3269-24	8	Rivet	38	98-7913	1	Tube-Spacer
19	3233-34	1	Screw-CARR	39	3290-357	4	Nut-HHF, Whiz
20	108-1908	1	Spacer-Idler	40	3231-27	3	Screw-CARR
21	108-4393	1	Belt-Hex	41	3296-45	1	Nut-Lock, NI
22	107-4725	1	Pulley	46	119-4778	3	Spindle ASM
23	01-268-0160	2	Pulley-Idler	47	110-0621-03	3	Blade-Medium Flow



Roller, Belt and Pulley Assembly (continued)

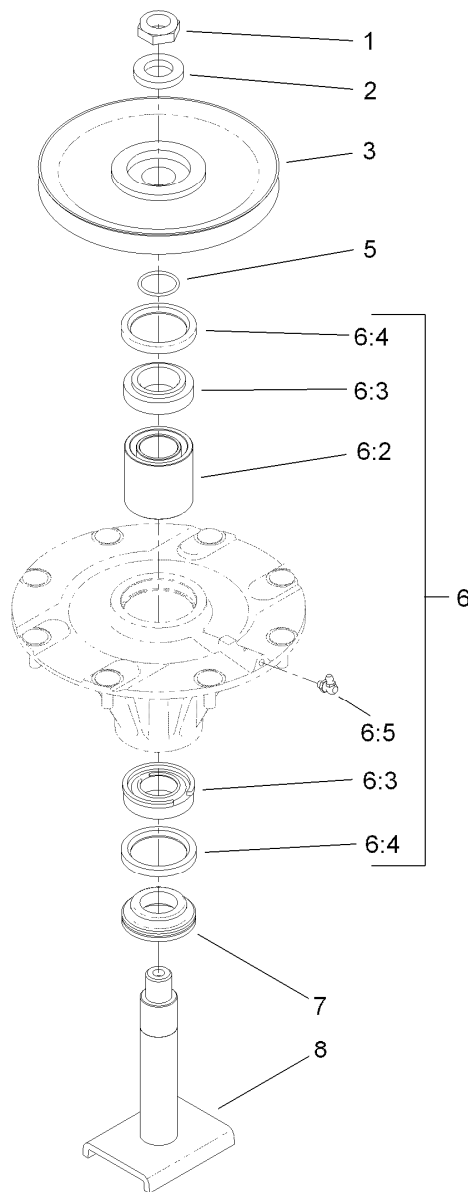
<i>Ref.</i>	<i>Part Number</i>	<i>Qty.</i>	<i>Description</i>
48	72-9361	3	Cup-Scalp, Anti

<i>Ref.</i>	<i>Part Number</i>	<i>Qty.</i>	<i>Description</i>
49	92-5816	3	Bolt-Blade
50	104-8301	24	Nut-Flange, NI



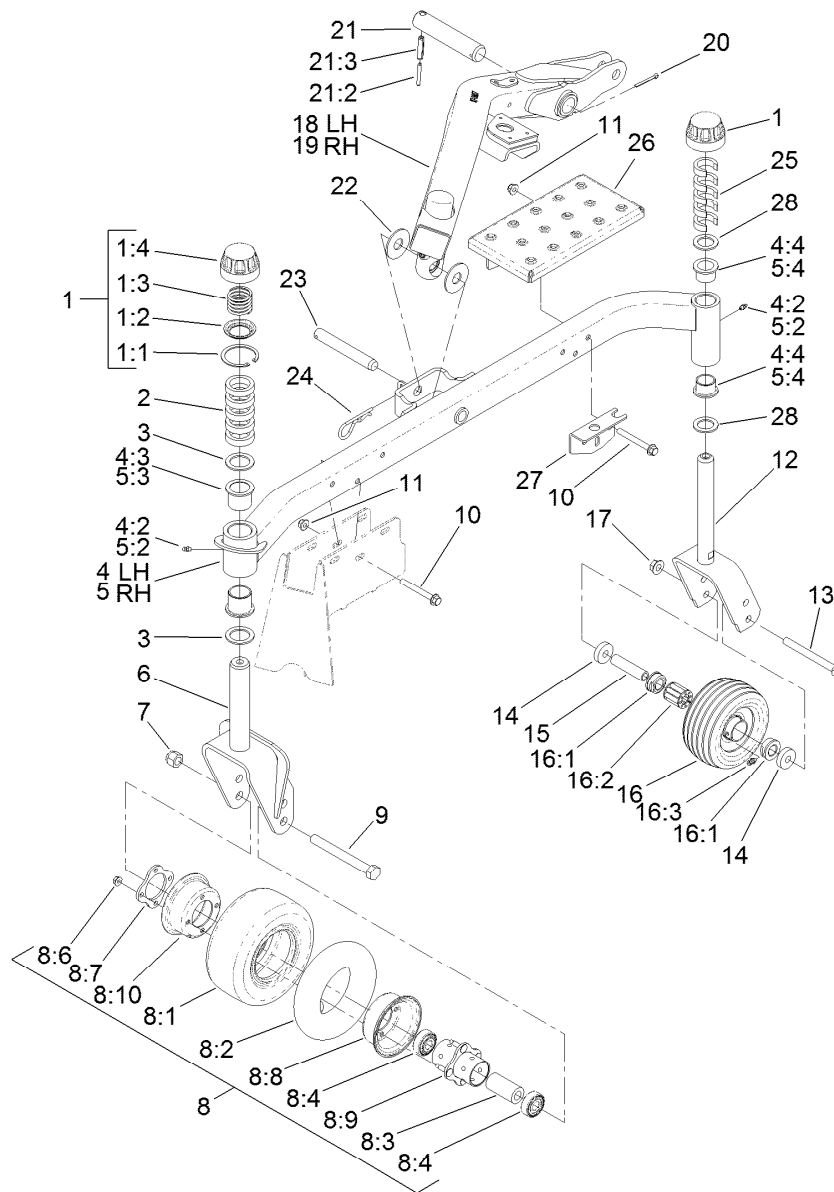
Deck Assembly No. 121-6425

<i>Ref.</i>	<i>Part Number</i>	<i>Qty.</i>	<i>Description</i>
2	117-4979	4	Decal-Warning, Shields (Ce)
3	107-2916	1	Decal-Warning
4	107-1622	1	Decal-Adjustment, Baffle
5	93-7818	2	Decal-Torque, Blade Bolt
6	107-2908	2	Decal-Danger, Combination
7	100-5622	2	Decal-HOC
8	57-0280	1	Decal
9	115-4505	1	Decal-Warning
10	120-6604	1	Decal-Danger
11	108-1988	1	Decal-Routing, Belt
13	32148-9	6	Insert-Nut
14	120-6603-03	3	Ring-Doubler



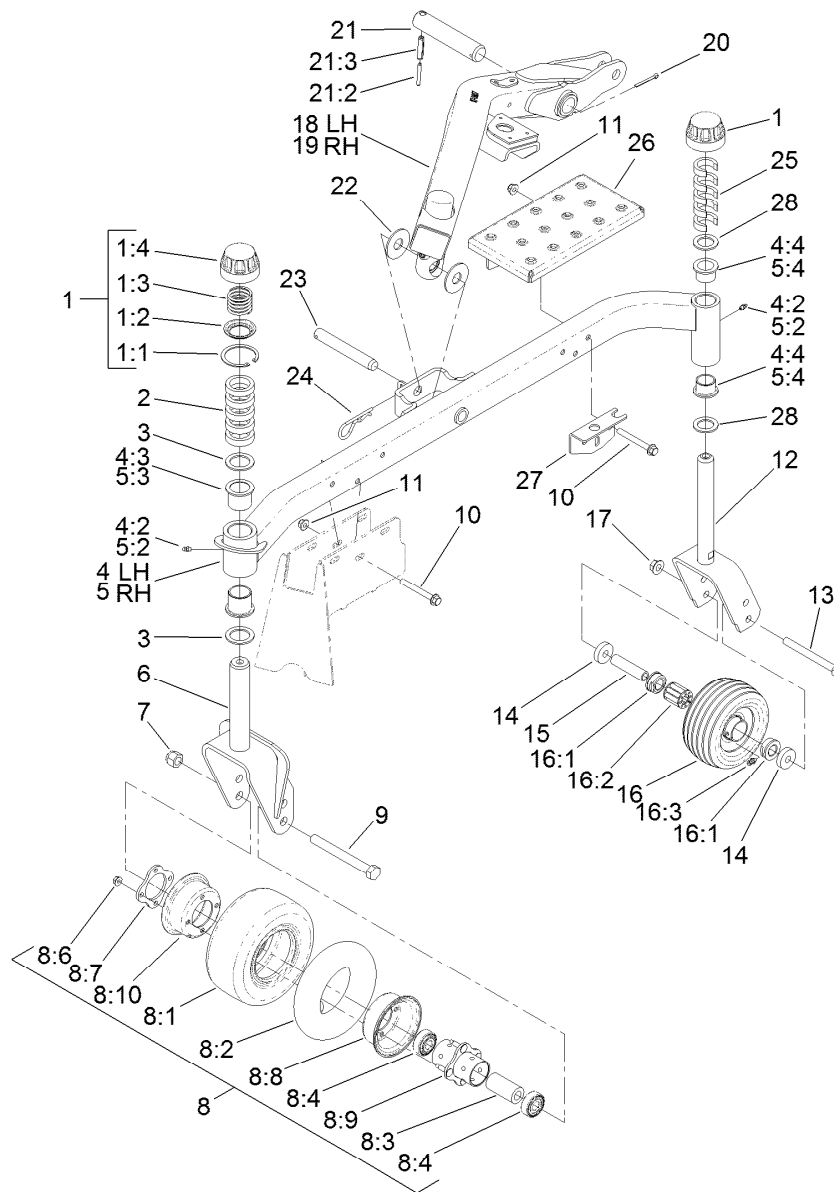
Spindle Assembly No. 119-4778

<i>Ref.</i>	<i>Part Number</i>	<i>Qty.</i>	<i>Description</i>
1	3296-60	1	Nut-Lock, NI
2	104-8322	1	Washer-Hardened
3	104-3546	1	Pulley-Driven, Low
5	106-7159	1	O-Ring
6	119-4777	1	Spindle ASM
6:2	108-1954	1	Spacer Set-Bearing
6:3	110-8297	1	Bearing ASM
6:4	253-154	2	Seal-Oil
6:5	302-60	1	Fitting-Grease
7	69-6950	1	Spacer-Shaft, Spindle
8	108-1956	1	Shaft ASM



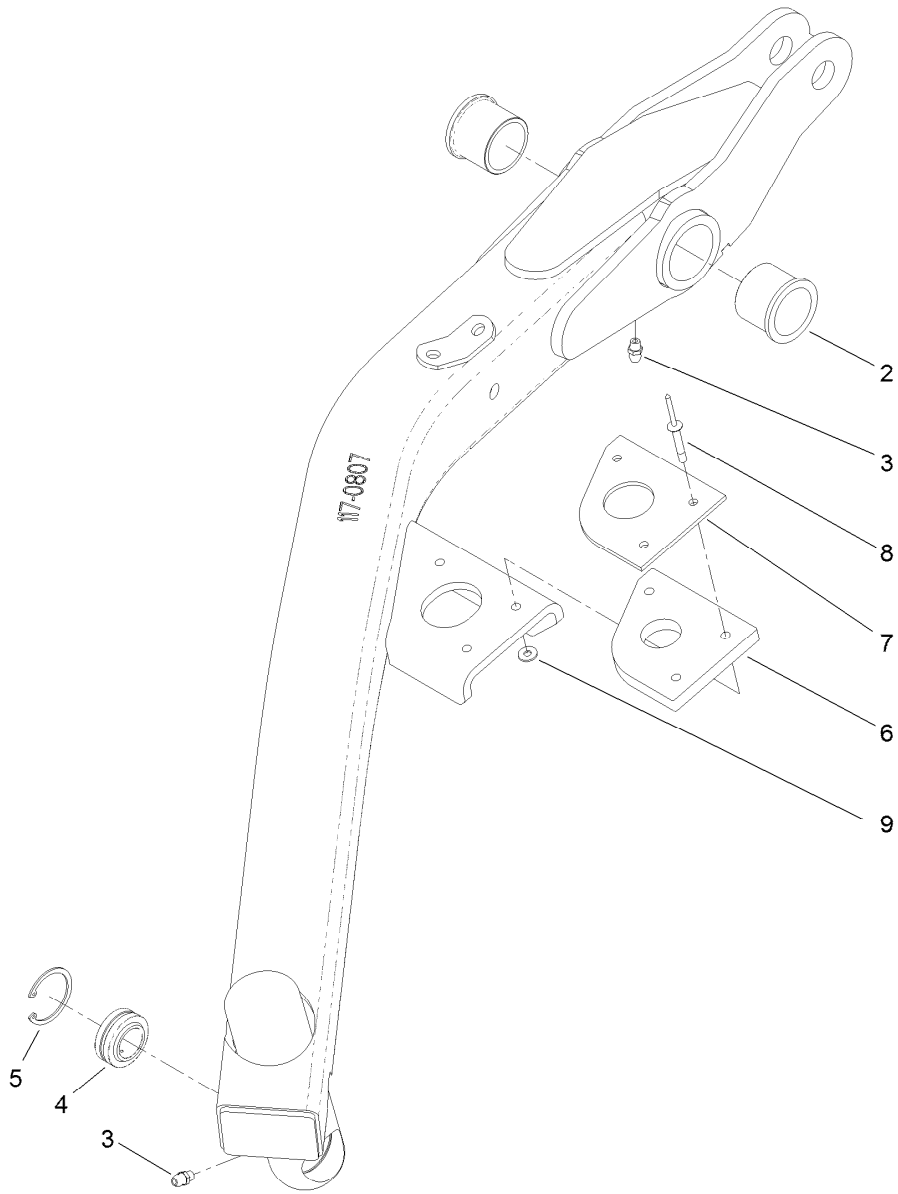
Caster and Lift Arm Assembly

Ref.	Part Number	Qty.	Description	Ref.	Part Number	Qty.	Description
1	92-9727	4	HOC Cap ASM	8:4	120-3366	2	Bearing
1:1	92-5581	1	Ring-Retaining	8:6	32128-16	4	Nut-HHF
1:2	92-5583	1	Washer-Cap	8:7	93-4242	1	Plate
1:3	92-9726	1	Spring-Compression	8:8	93-4239	1	Rim-Wheel, Half
1:4	92-8861	1	Cap-HOC	8:9	93-5980	1	Hub
2	69-1510	10	Spacer	8:10	95-2741	1	Rim-Wheel, Half
3	69-6860	4	Washer-Thrust	9	327-24	2	Screw-HH
4	120-6585	1	RH Castor Arm ASM	10	3234-41	12	Screw-HHF
4:2	69-6470	2	Bushing-Castor	11	104-8301	12	Nut-Flange, NI
4:3	302-5	2	Fitting-Grease	12	121-6415-01	2	Castor Fork ASM
4:4	94-1291	2	Bushing	13	325-19	2	Screw-HH
5	120-6586	1	LH Castor Arm ASM	14	99-1291	4	Spacer
5:2	69-6470	2	Bushing-Castor	15	63-1770	2	Spanner
5:3	302-5	2	Fitting-Grease	16	63-8400	2	Castor Wheel ASM
5:4	94-1291	2	Bushing	16:1	62-5580	2	Bearing-Outside
6	104-0762-01	2	Castor Fork ASM	16:2	63-8580	1	Bearing-Roller
7	3296-53	2	Nut-Lock, NI	16:3	302-40	1	Fitting-Grease
8	93-9938	2	8 Inch Wheel ASM	17	32128-23	2	Nut-HF
8:1	93-9939	1	Tire	18	117-0806	1	LH Lift Arm ASM
8:2	68-8950	1	Tube-Inner (W/Valve)	19	117-0800	1	RH Lift Arm ASM
8:3	93-4241	1	Spacer-Bearing, Inner	20	3272-24	2	Pin-Cotter



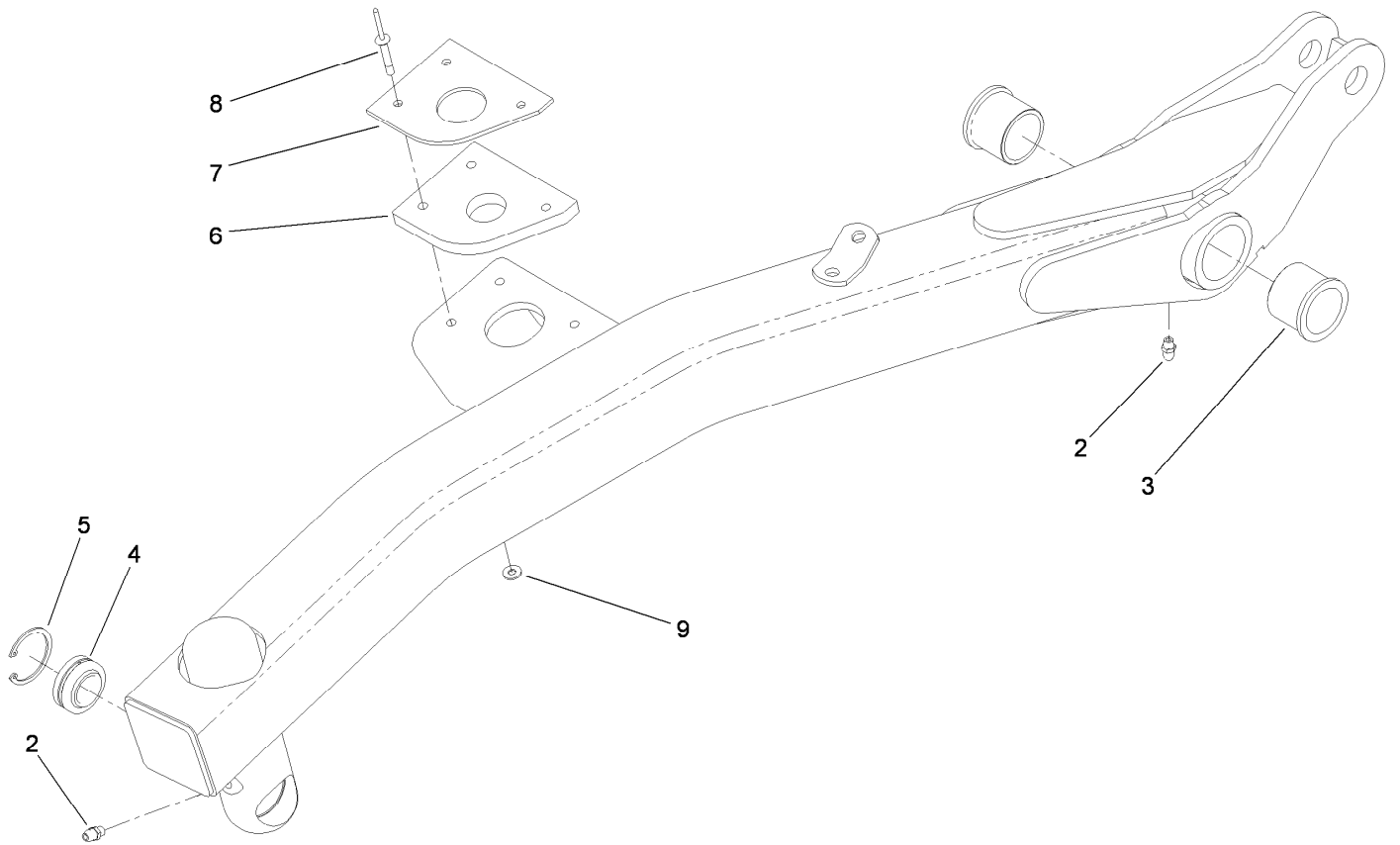
Caster and Lift Arm Assembly (continued)

<i>Ref.</i>	<i>Part Number</i>	<i>Qty.</i>	<i>Description</i>	<i>Ref.</i>	<i>Part Number</i>	<i>Qty.</i>	<i>Description</i>
21	98-2330	2	Pivot Pin ASM	24	3290-256	2	Pin-Hair
21:2	32121-67	1	Pin-Spring	25	99-1283	10	Spacer
21:3	32121-61	1	Pin-Roll	26	121-6418-01	1	Deck Step ASM
22	107-7915	4	Washer-Thrust	27	121-6411-01	1	Bracket-Mounting, Step
23	107-7904	2	Pin-Clevis	28	3-6781	4	Washer-Thrust



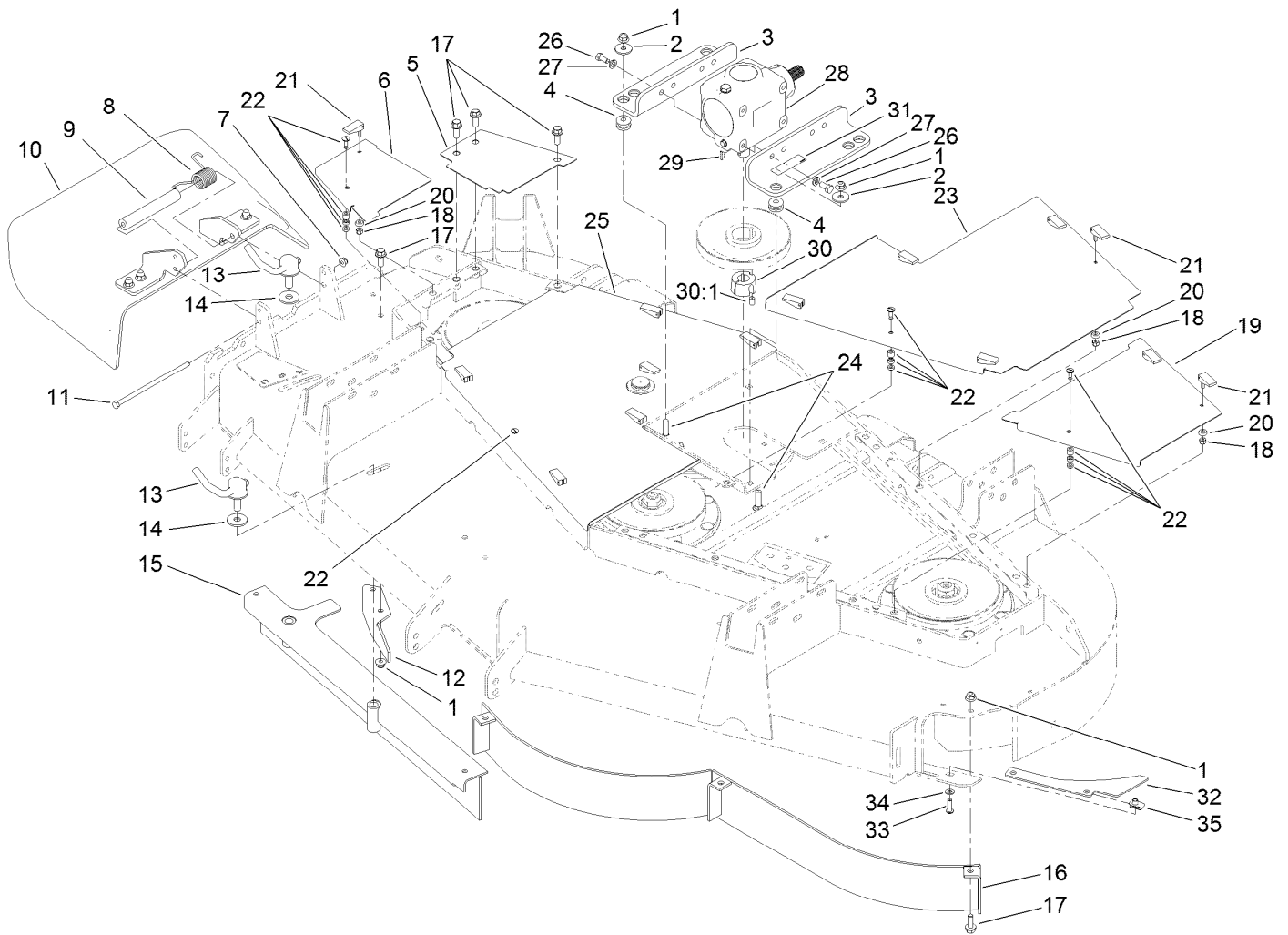
Left Hand Lift Arm Assembly No. 117-0806

<i>Ref.</i>	<i>Part Number</i>	<i>Qty.</i>	<i>Description</i>
2	256-268	2	Bushing
3	302-5	2	Fitting-Grease
4	105-7441	1	Bearing-Spherical
5	32151-34	1	Ring-Retaining
6	119-2200	1	Pad-Rubber, Rear HOC
7	119-2230	1	Pad-Plastic, Rear HOC
8	110-0606	3	Rivet-Blind
9	3269-26	3	Washer-Plain



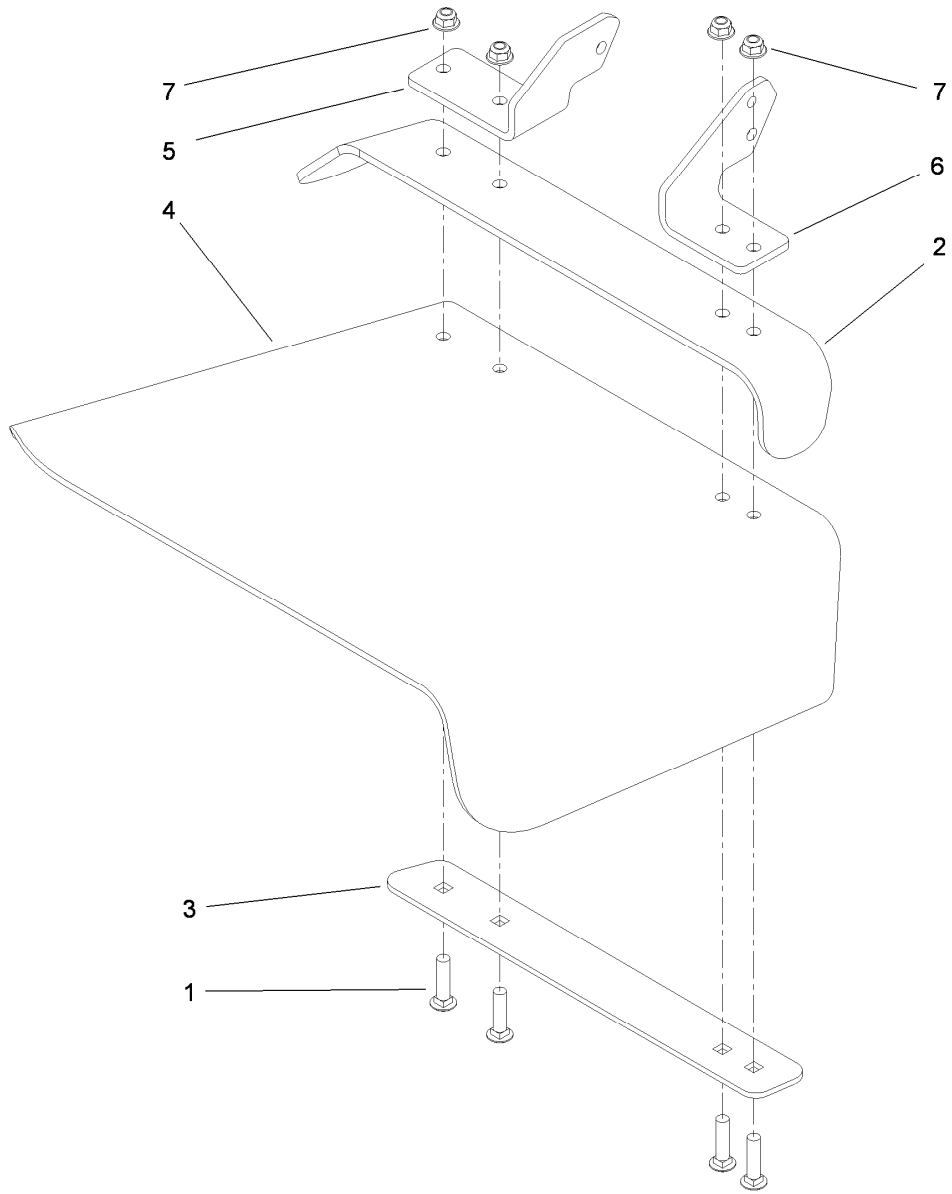
Right Hand Lift Arm Assembly No. 117-0800

<i>Ref.</i>	<i>Part Number</i>	<i>Qty.</i>	<i>Description</i>
2	302-5	2	Fitting-Grease
3	256-268	2	Bushing
4	105-7441	1	Bearing-Spherical
5	32151-34	1	Ring-Retaining
6	119-2200	1	Pad-Rubber, Rear HOC
7	119-2230	1	Pad-Plastic, Rear HOC
8	110-0606	3	Rivet-Blind
9	3269-26	3	Washer-Plain



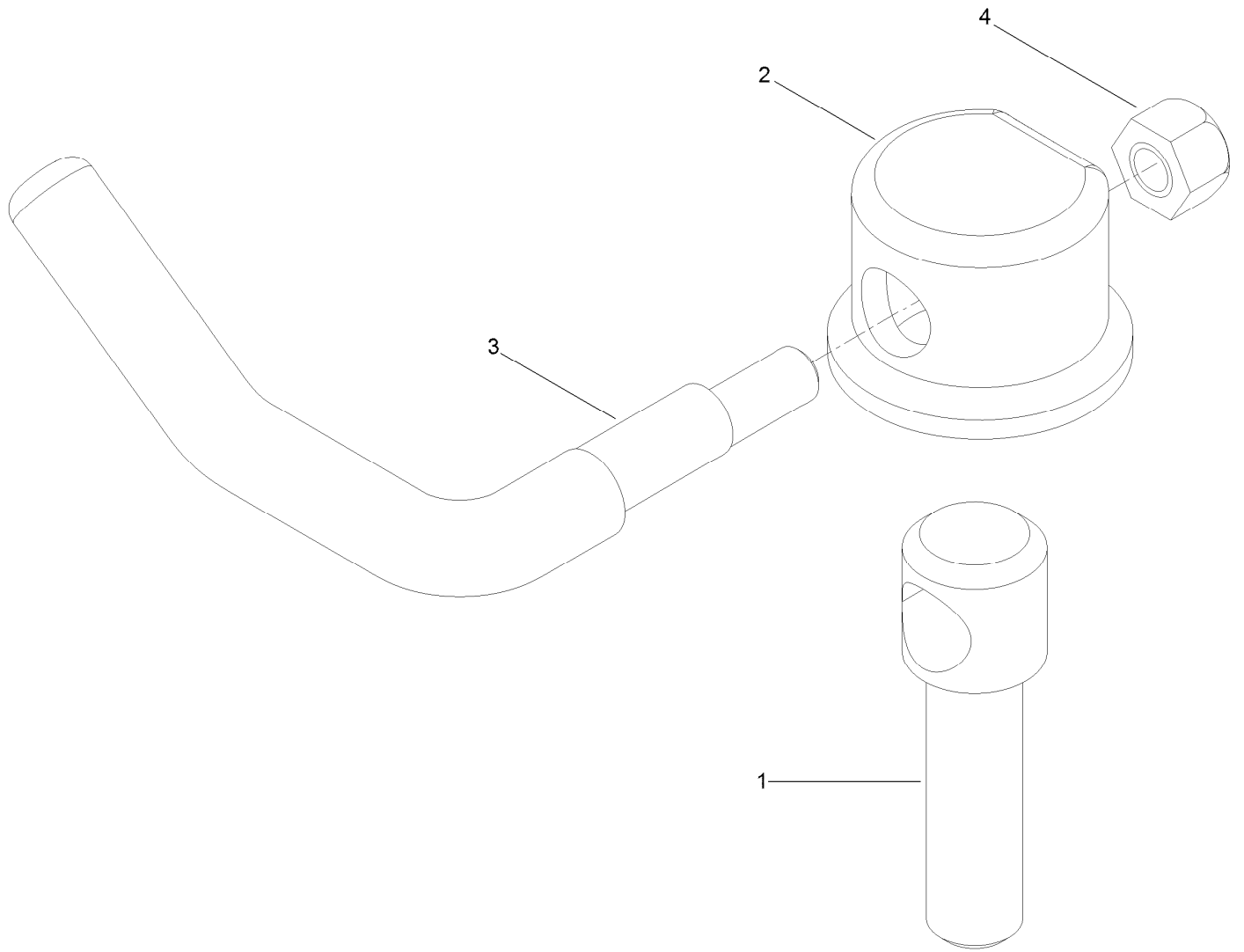
Cover, Gearbox and Baffle Assembly

Ref.	Part Number	Qty.	Description	Ref.	Part Number	Qty.	Description
1	104-8301	10	Nut-Flange, NI	20	106-6778	14	Bushing-Latch, Swell
2	63-8410	4	Washer	21	106-6777	14	Handle-Latch, Swell
3	108-4376-03	2	Bracket-Gearbox	22	117-6989	4	Fractional Turn Oval Head Stud ASM
4	63-9750	4	Mount	23	119-4802-03	1	Cover-Deck, LH Inner
5	110-0633-03	1	Cover-Deck, RH Outer Rear	24	3231-26	4	Screw-CARR
6	119-4804-03	1	Cover-Deck, RH Outer Front	25	119-4803-03	1	Cover-Deck, RH Inner
7	104-8300	1	Nut-Flange, NI	26	323-4	4	Screw-HH
8	108-4052	1	Spring-Torsion	27	3253-21	4	Washer-Lock
9	105-4622	1	Spacer	28	108-1370	1	Gearbox Replacement Kit
10	108-2792	1	Rubber Deflector ASM	29	3257-5	1	Key-Woodruff
11	112-9557	1	Screw-HH	30	23-1640	1	Bushing-Taperlock
12	106-3216-01	1	Baffle-Discharge	30:1	3247-4	2	Screw-Set
13	107-1664	2	Lever ASM	31	93-6697	1	Decal-Lube
14	105-7697	2	Washer-Plastic	32	115-1396	1	Plate-Turbo
15	105-7669-01	1	Baffle ASM	33	3274-104	2	Screw-HSBH
16	105-7730-01	1	Baffle ASM	34	3256-23	2	Washer-Flat
17	3234-42	9	Screw-HHF	35	112-3306	2	Nut
18	1-804254	14	Nut-Lock, HH				
19	119-4801-03	1	Cover-Deck, LH Outer				



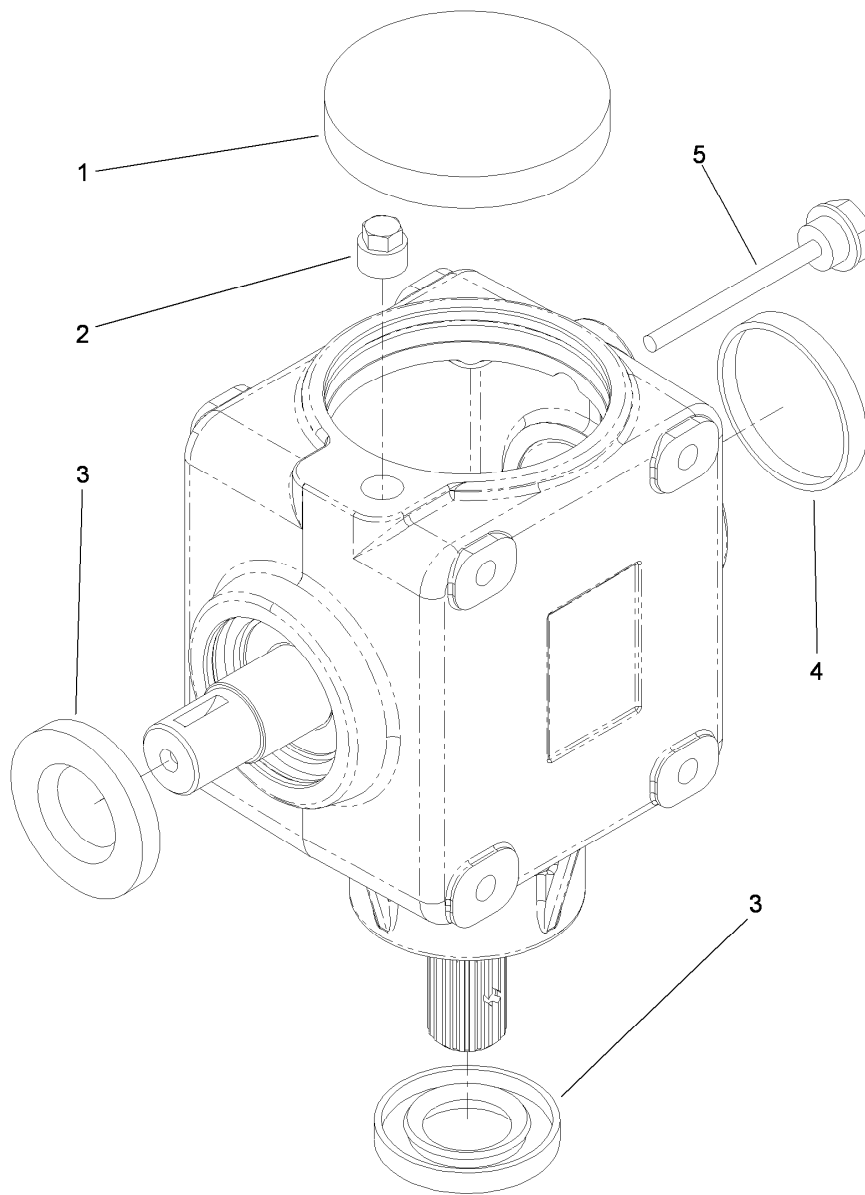
Rubber Deflector Assembly No. 108-2792

<i>Ref.</i>	<i>Part Number</i>	<i>Qty.</i>	<i>Description</i>
1	3231-4	4	Screw-CARR
2	106-3246-01	1	Deflector
3	106-3248-03	1	Strap-Discharge
4	108-5029	1	Deflector-Rubber
5	108-4059-01	1	Plate-Hinge, Rear
6	106-3253-01	1	Plate-Hinge, Front
7	104-8301	4	Nut-Flange, NI



Lever Assembly No. 107-1664

<i>Ref.</i>	<i>Part Number</i>	<i>Qty.</i>	<i>Description</i>
1	106-3239	1	Screw-Lock
2	107-1644	1	Cap-Lock
3	106-3241	1	Lever-Lock
4	3296-29	1	Nut-Lock, NI



Gear Box Assembly No. 108-1370

<i>Ref.</i>	<i>Part Number</i>	<i>Qty.</i>	<i>Description</i>
1	107-2932	1	Cap-Oil
2	107-2933	1	Plug
3	117-9247	2	Seal
4	107-2935	1	Cap-Oil
5	107-2936	1	Plug-Filler, Dipstick



Count on it.