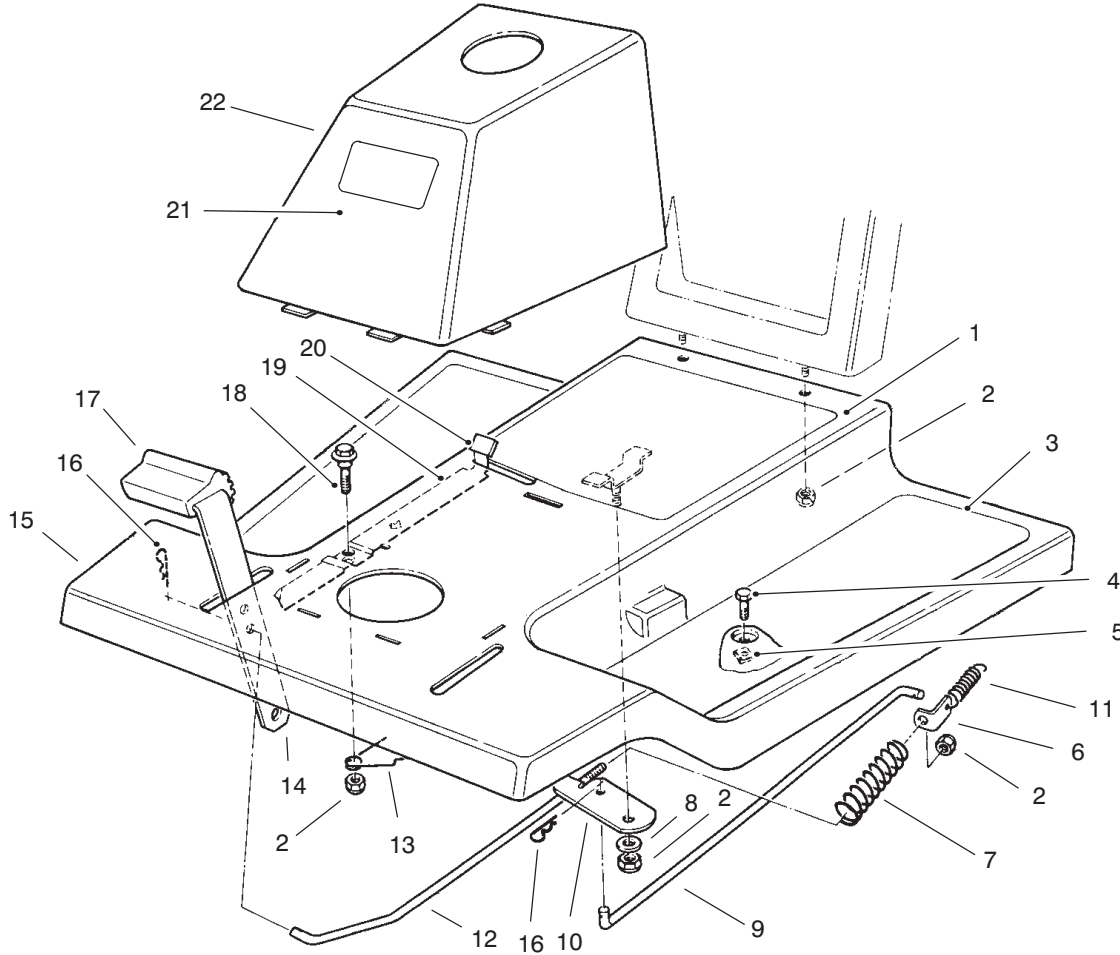




MODEL NO. 70040-7900579 & UP

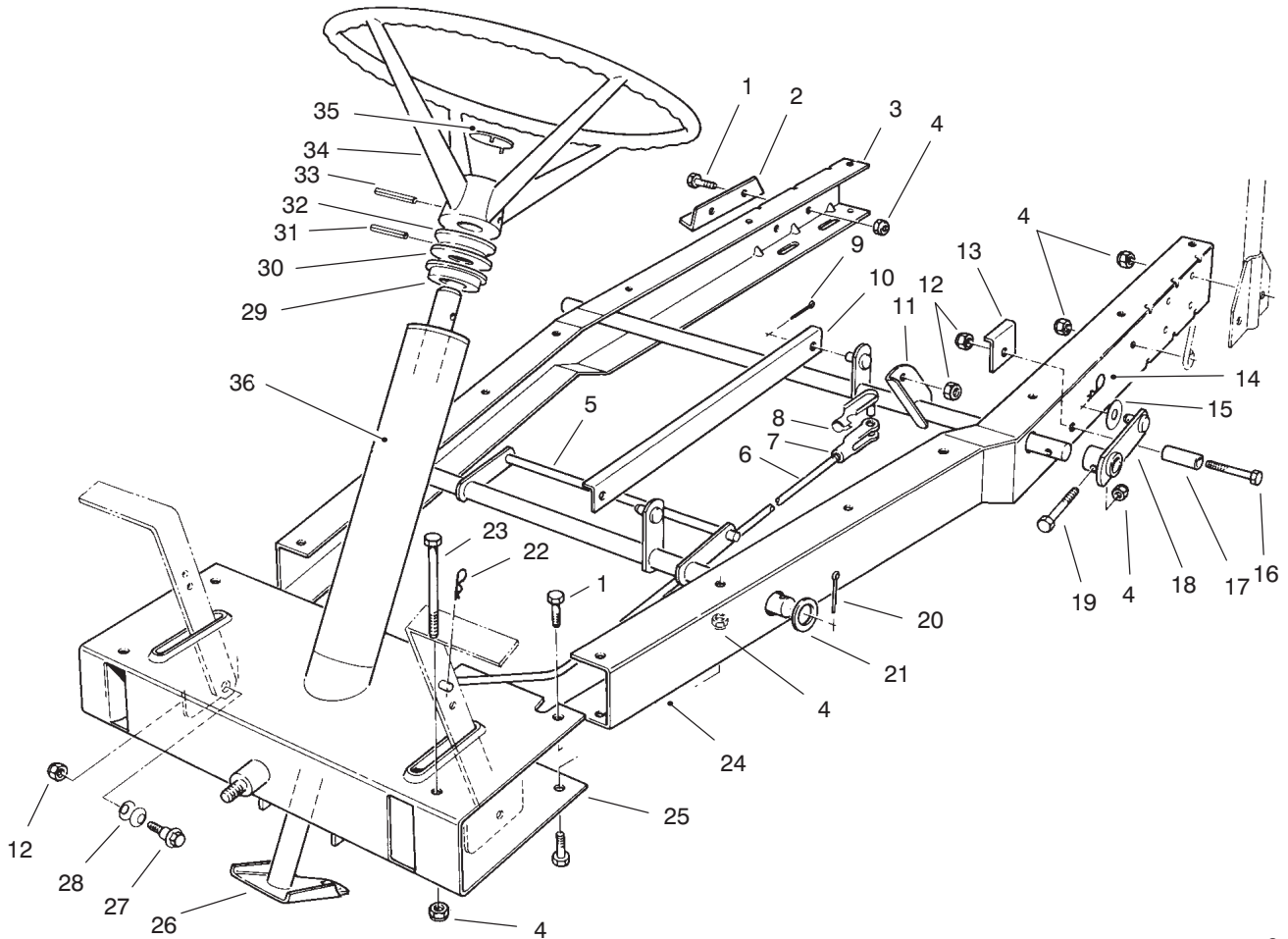
PARTS
CATALOG
WHEEL HORSE[®]
 825 Recycler[®] Riding Mower


C-1940

FRONT BODY ASSEMBLY

| Ref. No. | Part No. | Description | No. Used |
|----------|------------|---------------------------|----------|
| 1 | 93-9499 | Decal - Instruction | 1 |
| 2 | 3296-29 | Nut - Lock | 5 |
| 3 | 44-7030 | Tread - Foot Rest | 2 |
| 4 | 32104-110 | Screw - Cap Hex. Hd. | 4 |
| 5 | 3290-347 | Nut - U-Type | 4 |
| 6 | 67-1590 | Bracket - Brake Return | 1 |
| 7 | 67-1430 | Spring - Compression | 1 |
| 8 | 26-9530 | Washer - Pivot | 1 |
| 9 | 67-1340 | Rod - Brake, Transmission | 1 |
| 10 | 67-1330-03 | Lever - Brake, Bellcrank | 1 |
| 11 | 67-1450 | Spring - Extension | 1 |
| 12 | 67-1350 | Rod - Front, Brake | 1 |

| Ref. No. | Part No. | Description | No. Used |
|----------|------------|---------------------------|----------|
| 13 | 19-1970 | Spring - Brake, Parking | 1 |
| 14 | 67-1130-03 | Pedal - Brake & Clutch | 2 |
| 15 | 67-1070-01 | Body W.A. - Front | 1 |
| 16 | 3290-250 | Pin - Hair, Cotter | 2 |
| 17 | 65-2920 | Pad - Pedal | 2 |
| 18 | 19-1470 | Bolt - Shoulder | 1 |
| 19 | 19-1610-03 | Lever - Brake, Parking | 1 |
| 20 | 19-2200 | Tip - Brake, Parking | 1 |
| 21 | 92-7981 | Decal - Toro | 1 |
| 22 | 55-7103 | Tower (Incl. Ref. #21) | 1 |

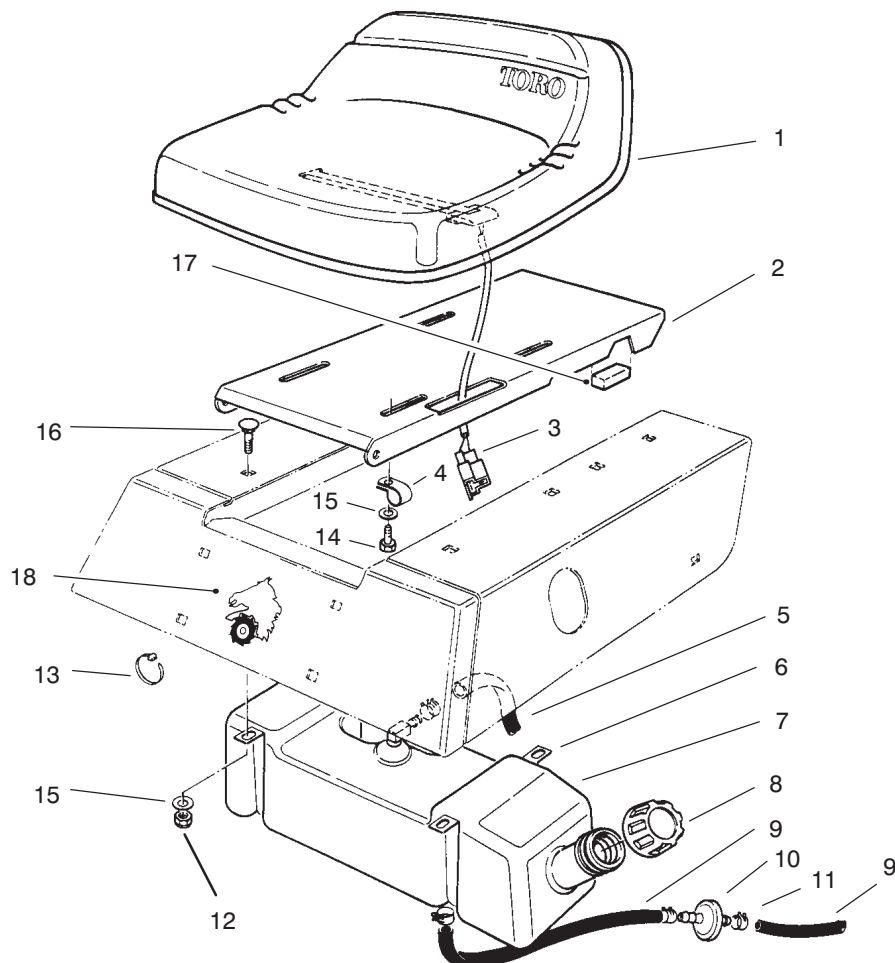


C-0005

FRAME ASSEMBLY

| Ref. No. | Part No. | Description | No. Used |
|----------|------------|--------------------------|----------|
| 1 | 322-3 | Screw - Cap Hex. Hd. | 6 |
| 2 | 44-7140-01 | Mount - Bearing, Axle | 1 |
| 3 | 67-0520-01 | Channel - R.H. | 1 |
| 4 | 3296-29 | Nut - Lock | 16 |
| 5 | 67-0010-03 | Lift W.A. - Front, Deck | 1 |
| 6 | 67-0430 | Rod - Clutch | 1 |
| 7 | 282-27 | Clevis | 1 |
| 8 | 67-1530 | Pin - Clevis | 1 |
| 9 | 3272-6 | Pin - Cotter | 2 |
| 10 | 67-0090-03 | Bracket - Link, H.O.C. | 1 |
| 11 | 67-0050-01 | Tube W.A. - Support Rear | 1 |
| 12 | 3296-39 | Nut - Lock | 5 |
| 13 | 67-1510-03 | Brace - Stop, Deck | 2 |
| 14 | 3290-355 | Pin - Hair, Cotter | 2 |
| 15 | 67-1460 | Washer - Flat | 2 |
| 16 | 323-10 | Screw - Cap Hex. Hd. | 2 |
| 17 | 68-8380 | Spacer - Stop, Deck | 2 |
| 18 | 67-0300-01 | Lever W.A. - H.O.C. | 2 |
| 19 | 46-2511 | Bolt - Mounting, Axle | 2 |

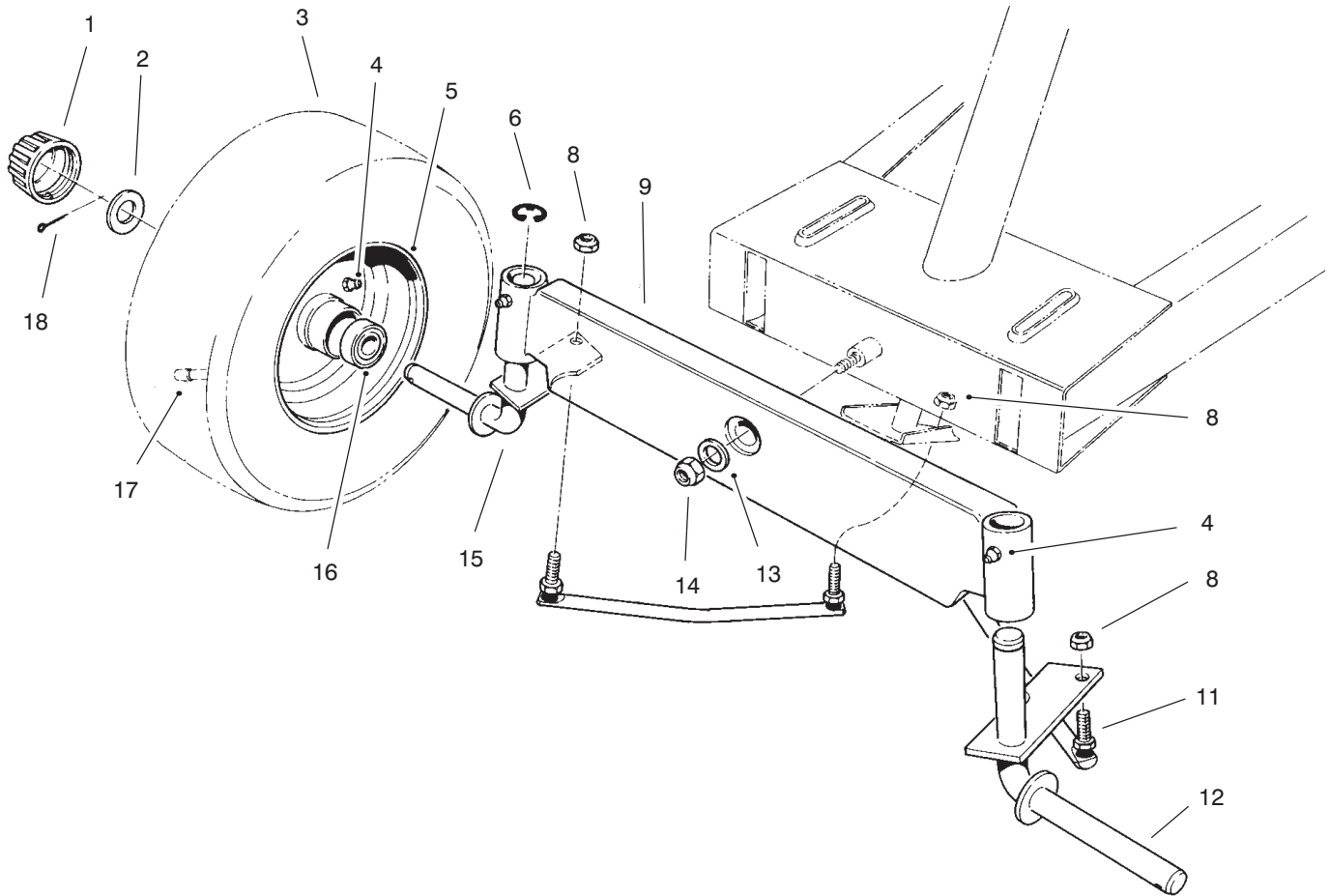
| Ref. No. | Part No. | Description | No. Used |
|----------|------------|--------------------------|----------|
| 20 | 3272-23 | Pin - Cotter | 2 |
| 21 | 3256-29 | Washer - Flat | 2 |
| 22 | 3290-250 | Pin - Hair, Cotter | 1 |
| 23 | 322-14 | Screw - Cap Hex. Hd. | 2 |
| 24 | 67-0530-01 | Channel - L.H. | 1 |
| 25 | 67-0450-01 | Frame W.A. - Front | 1 |
| 26 | 67-0830-03 | Shaft W.A. - Steering | 1 |
| 27 | 67-0870 | Bolt - Shoulder | 2 |
| 28 | 3290-413 | Washer - Belleville | 4 |
| 29 | 67-0850 | Bushing - Steering | 2 |
| 30 | 67-0860 | Washer - Steering | 1 |
| 31 | 32121-32 | Pin - Roll | 1 |
| 32 | 67-0440 | Spacer - Steering | 1 |
| 33 | 32121-78 | Pin - Roll | 1 |
| 34 | 49-3242 | Wheel - Steering | 1 |
| 35 | 92-7990 | Insert - Wheel, Steering | 1 |
| 36 | 76-4080 | Decal | 1 |
| * | 13-6049 | Kit - Loose parts | 1 |



C-1941

SEAT & GAS TANK ASSEMBLY

| Ref. No. | Part No. | Description | No. Used | Ref. No. | Part No. | Description | No. Used |
|----------|------------|---------------------|----------|----------|----------|----------------------|----------|
| 1 | 88-4330 | Seat | 1 | 10 | 56-6360 | Filter | 1 |
| 2 | 67-1242-01 | Base - Seat | 1 | 11 | 2412-98 | Clamp - Hose | 5 |
| 3 | 38-1420 | Switch - Seat | 1 | 12 | 3296-29 | Nut - Lock | 4 |
| 4 | 18-2970 | R-Clamp | 1 | 13 | 3290-378 | Tie - Cable | 1 |
| 5 | 47-2986 | Hose - Gas | 1 | 14 | 322-3 | Screw - Cap Hex. Hd. | 4 |
| 6 | 67-0950 | Strap - Tank, Gas | 2 | 15 | 3256-23 | Washer - Flat | 8 |
| 7 | 80-4580 | Tank - Gas | 1 | 16 | 3230-20 | Bolt - Carriage | 4 |
| 8 | 55-3576 | Assembly - Cap, Gas | 1 | 17 | 66-6920 | Pad - Isolator | 2 |
| 9 | 47-2964 | Hose - Gas | 2 | 18 | 92-7978 | Decal - Horsehead | 1 |

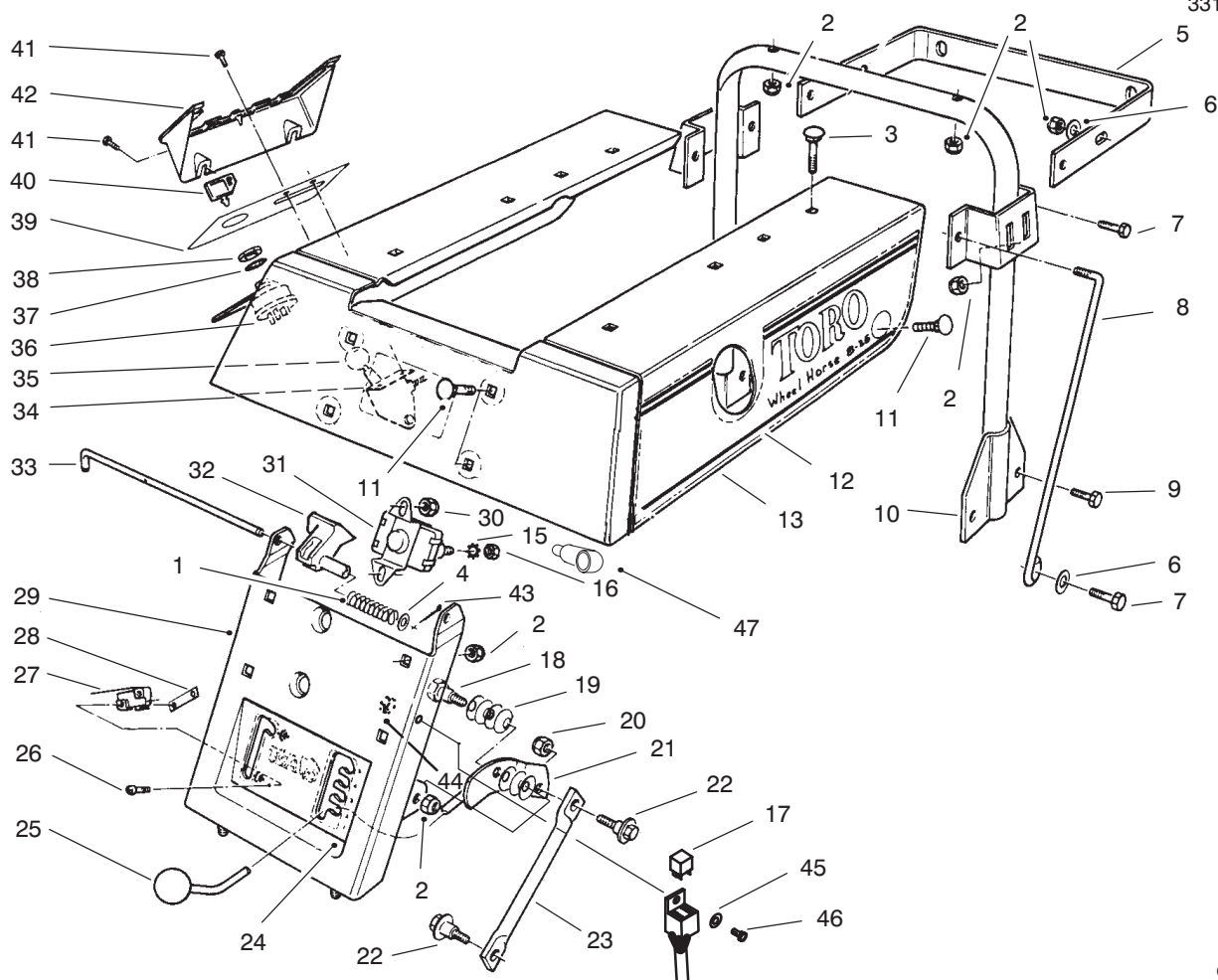


C-0003A

FRONT AXLE ASSEMBLY

| Ref. No. | Part No. | Description | No. Used |
|----------|----------|--------------------|----------|
| 1 | 61-9780 | Cap - Hub | 2 |
| 2 | 28-2480 | Washer - Flat | 2 |
| 3 | 231-116 | Tire | 2 |
| 4 | 302-5 | Fitting - Grease | 4 |
| 5 | 217-80 | Rim | 2 |
| 6 | 32151-48 | Ring - Retaining | 2 |
| 8 | 3296-4 | Nut - Lock | 4 |
| 9 | 67-0990 | Axle - Front | 1 |
| 11 | 67-0880 | Assembly - Tie Rod | 2 |

| Ref. No. | Part No. | Description | No. Used |
|----------|------------|------------------|----------|
| 12 | 67-0810-01 | Spindle - L.H. | 1 |
| 13 | 3256-26 | Washer - Flat | 1 |
| 14 | 3296-25 | Nut - Lock | 1 |
| 15 | 67-0800-01 | Spindle - R.H. | 1 |
| 16 | 110513 | Bearing | 4 |
| 17 | 232-27 | Valve Stem w/Cap | 2 |
| 18 | 3272-12 | Pin - Cotter | 2 |
| * | 232-44 | Tube - Inner | 2 |

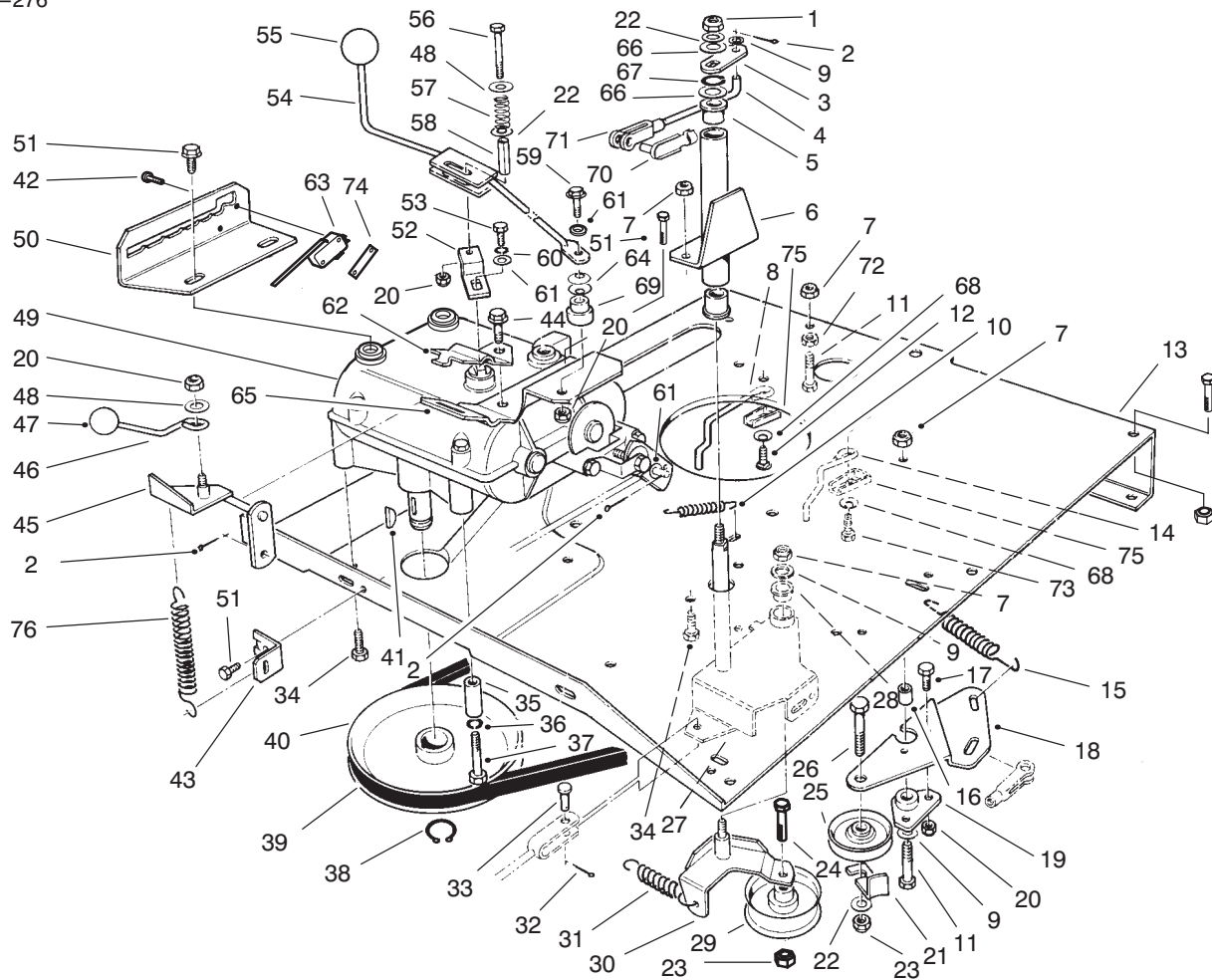


C-1942B

REAR BODY ASSEMBLY

| Ref. No. | Part No. | Description | No. Used |
|----------|------------|-----------------------------|----------|
| 1 | 71-8310 | Spring - Prop, Seat | 1 |
| 2 | 3296-29 | Nut - Lock | 13 |
| 3 | 3230-3 | Bolt - Carriage | 2 |
| 4 | 3256-22 | Washer - Flat | 1 |
| 5 | 67-1500-03 | Bar - Stand | 1 |
| 6 | 3256-23 | Washer - Flat | 4 |
| 7 | 322-5 | Screw - Cap Hex. Hd. | 2 |
| 8 | 67-1480 | Brace - Support, Seat | 2 |
| 9 | 322-3 | Screw - Cap Hex. Hd. | 6 |
| 10 | 67-0790-03 | Support W.A. - Seat | 1 |
| 11 | 3230-20 | Bolt - Carriage | 6 |
| 12 | 92-7979 | Decal - Toro L.H. | 1 |
| * | 92-7980 | Decal - Toro R.H. | 1 |
| 13 | 67-0231-01 | Body W.A. - Rear | 1 |
| 15 | 3253-3 | Washer - Lock | 2 |
| 16 | 3218-1 | Nut - Jam | 2 |
| 17 | 48-4700 | Relay | 1 |
| 18 | 28-0540 | Bolt - Shoulder | 1 |
| 19 | 3290-413 | Washer - Belleville | 7 |
| 20 | 3296-39 | Nut - Lock | 1 |
| 21 | 67-0270 | Handle W.A. - H.O.C. | 1 |
| 22 | 67-0870 | Bolt - Shoulder | 2 |
| 23 | 67-0080 | Link - H.O.C. | 1 |
| 24 | 76-3920 | Decal - H.O.C./Deck Engage. | 1 |

| Ref. No. | Part No. | Description | No. Used |
|----------|------------|--|----------|
| 25 | 233-22 | Knob | 1 |
| 26 | 9104784 | Screw - Pan Head | 2 |
| 27 | 88-9931 | Switch - Micro | 1 |
| 28 | 3290-354 | Nut - Double | 1 |
| 29 | 67-1090-01 | Support W.A. - Seat | 1 |
| 30 | 3296-42 | Nut - Lock | 2 |
| 31 | 92-9845 | Solenoid | 1 |
| 32 | 80-4330 | Prop - Seat | 1 |
| 33 | 80-4550 | Rod - Base, Seat | 1 |
| 34 | 66-6640 | Control - Throttle | 1 |
| 35 | 233-25 | Knob | 1 |
| 36 | 88-9830 | Switch - Ignition (Incl. Ref. #37 & 38) | 1 |
| 37 | 3254-5 | Washer - Lock, Int. Tooth | 1 |
| 38 | 218-461 | Nut - Hex. | 1 |
| 39 | 67-1270 | Decal - Panel, Control | 1 |
| 40 | 63-8360 | Key | 1 |
| 41 | 32144-42 | Screw - Hex. Hd. Tapping | 4 |
| 42 | 67-1030 | Cover - Panel, Control | 1 |
| 43 | 3272-4 | Pin - Cotter | 1 |
| 44 | 3296-2 | Nut - Lock | 1 |
| 45 | 3256-14 | Washer - Flat | 1 |
| 46 | 3290-134 | Screw - Cap Mach. Hd. | 1 |
| 47 | 93-3190 | Boot - Terminal | 1 |

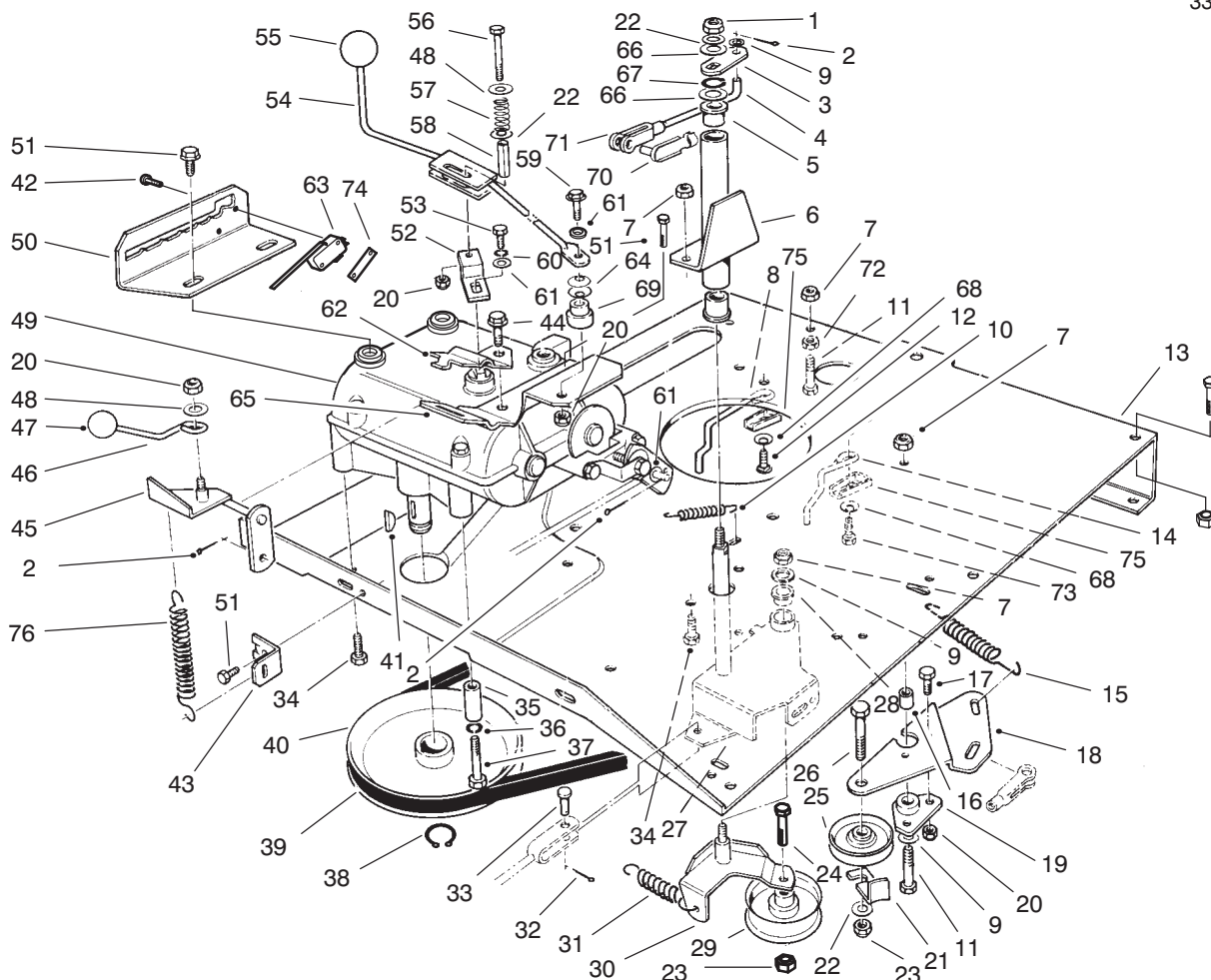


C-1506B

TRANSMISSION & LINKAGE ASSEMBLY

| Ref. No. | Part No. | Description | No. Used |
|----------|------------|--------------------------------------|----------|
| 1 | 3296-39 | Nut - Lock | 1 |
| 2 | 3272-6 | Pin - Cotter | 2 |
| 3 | 67-0690-03 | Flat - Deck Engage | 1 |
| 4 | 68-8370 | Link - Deck Engage | 1 |
| 5 | 256-90 | Bushing | 2 |
| 6 | 67-0540-03 | Tube W.A. - Pivot (Incl. Ref. #5) | 1 |
| 7 | 3296-29 | Nut - Lock | 13 |
| 8 | 67-0930 | Guide R.H. - Belt, Engine | 1 |
| 9 | 3256-23 | Washer - Flat | 3 |
| 10 | 26-6700 | Spring - Return, Brake | 1 |
| 11 | 322-6 | Screw - Cap Hex. Hd. | 2 |
| 12 | 32144-49 | Screw - Tapping | 1 |
| 13 | 76-4090-01 | Plate - Engine | 1 |
| 14 | 67-0940 | Guide L.H. - Belt, Engine | 1 |
| 15 | 68-9950 | Spring - Traction | 1 |
| 16 | 67-0410 | Spacer - Pivot | 1 |
| 17 | 321-4 | Screw - Cap Hex. Hd. | 2 |
| 18 | 67-0420-03 | Plate - Mount, Idler | 1 |
| 19 | 67-0400 | Mount - Pivot | 1 |
| 20 | 3296-42 | Nut - Lock | 5 |
| 21 | 12-9020 | Retainer - Belt | 1 |
| 22 | 3256-24 | Washer - Flat | 3 |
| 23 | 3296-59 | Nut - Lock | 2 |

| Ref. No. | Part No. | Description | No. Used |
|----------|------------|--|----------|
| 24 | 323-9 | Screw - Cap Hex. Hd. | 1 |
| 25 | 12-5820 | Pulley - Idler, Traction | 1 |
| 26 | 323-8 | Screw - Cap Hex. Hd. | 1 |
| 27 | 67-0360 | Bracket - Arm, Idler (Incl. Ref. #28) | 1 |
| 28 | 256-155 | Bushing | 1 |
| 29 | 56-9870 | Pulley - Idler, Deck | 1 |
| 30 | 67-0330-03 | Idler - Plate, Mount | 1 |
| 31 | 67-9170 | Spring | 1 |
| 32 | 3272-4 | Pin - Cotter | 1 |
| 33 | 283-67 | Pin - Clevis | 1 |
| 34 | 322-3 | Screw - Cap Hex. Hd. | 13 |
| 35 | 67-0920 | Guide - Belt | 1 |
| 36 | 3253-4 | Washer - Lock | 1 |
| 37 | 322-10 | Screw - Cap Hex. Hd. | 1 |
| 38 | 32120-64 | Ring - Retaining | 1 |
| 39 | 67-0900 | Belt - Traction | 1 |
| 40 | 82-6450 | Pulley - Transmission | 1 |
| 41 | 3257-23 | Key | 1 |
| 42 | 9104784 | Screw - Tapping | 2 |
| 43 | 67-0750 | Bracket - Mount, Spring | 1 |
| 44 | 32144-70 | Screw - Hex. Hd. Tapping | 1 |
| 45 | 67-0600-03 | Lever W.A. - Deck Engage | 1 |
| 46 | 67-0640 | Handle - Deck Engage | 1 |

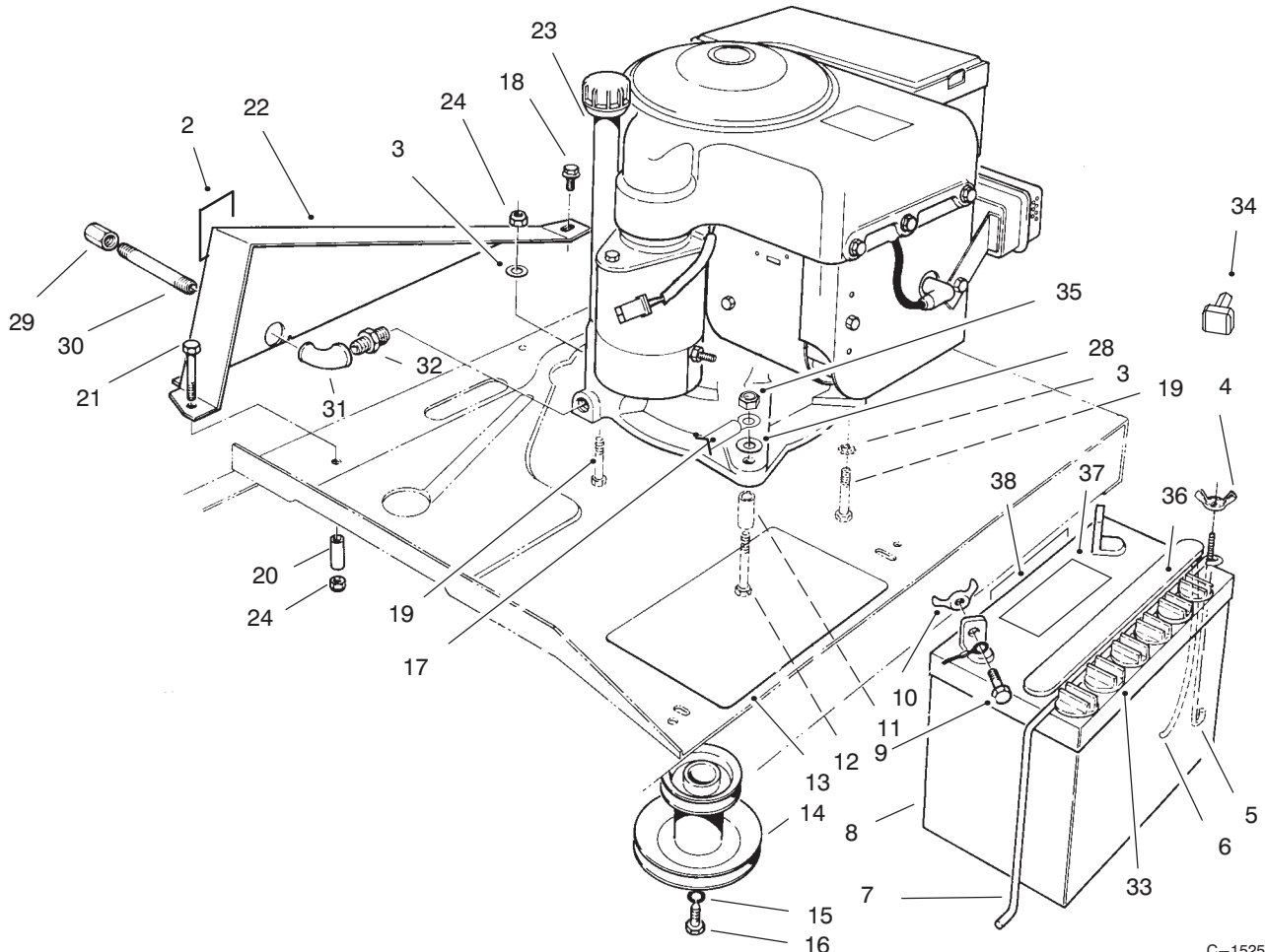


C-1506B

TRANSMISSION & LINKAGE ASSEMBLY (CONTINUED)

| Ref. No. | Part No. | Description | No. Used |
|----------|------------|-------------------------|----------|
| 47 | 233-22 | Knob | 1 |
| 48 | 3256-55 | Washer - Fender | 2 |
| 49 | 67-1400 | Transmission | 1 |
| 50 | 88-9810-03 | Gate - Shift | 1 |
| 51 | 32144-14 | Screw - Wash. Hd., Tap. | 4 |
| 52 | 56-7620 | Lever - Shift | 1 |
| 53 | 329-4 | Screw - Cap Hex. Hd. | 1 |
| 54 | 76-3940-03 | Lever W.A. - Shift | 1 |
| 55 | 233-48 | Knob | 1 |
| 56 | 321-15 | Screw - Cap Hex. Hd. | 1 |
| 57 | 56-7730 | Spring | 1 |
| 58 | 56-7740 | Spacer | 1 |
| 59 | 321-8 | Screw - Cap Hex. Hd. | 1 |
| 60 | 3253-3 | Washer - Lock | 1 |
| 61 | 3256-22 | Washer - Flat | 3 |
| 62 | 67-0670 | Bracket - Engage, Deck | 1 |

| Ref. No. | Part No. | Description | No. Used |
|----------|----------|--------------------------|----------|
| 63 | 88-9930 | Switch - Micro | 1 |
| 64 | 3290-478 | Washer - Belleville | 2 |
| 65 | 67-0660 | Bracket - Mount, Shifter | 1 |
| 66 | 20-3220 | Washer - Flat | 2 |
| 67 | 32151-62 | Ring - Retaining | 1 |
| 68 | 3290-456 | Washer - Belleville | 2 |
| 69 | 76-3970 | Spacer - Pivot | 1 |
| 70 | 67-1530 | Assembly - Pin, Clevis | 1 |
| 71 | 282-27 | Clevis | 1 |
| 72 | 3218-2 | Nut - Jam | 1 |
| 73 | 3230-2 | Bolt - Carriage | 1 |
| 74 | 3290-354 | Nut - Double | 1 |
| 75 | 76-3820 | Anchor - Guide, Belt | 2 |
| 76 | 76-4660 | Spring | 1 |

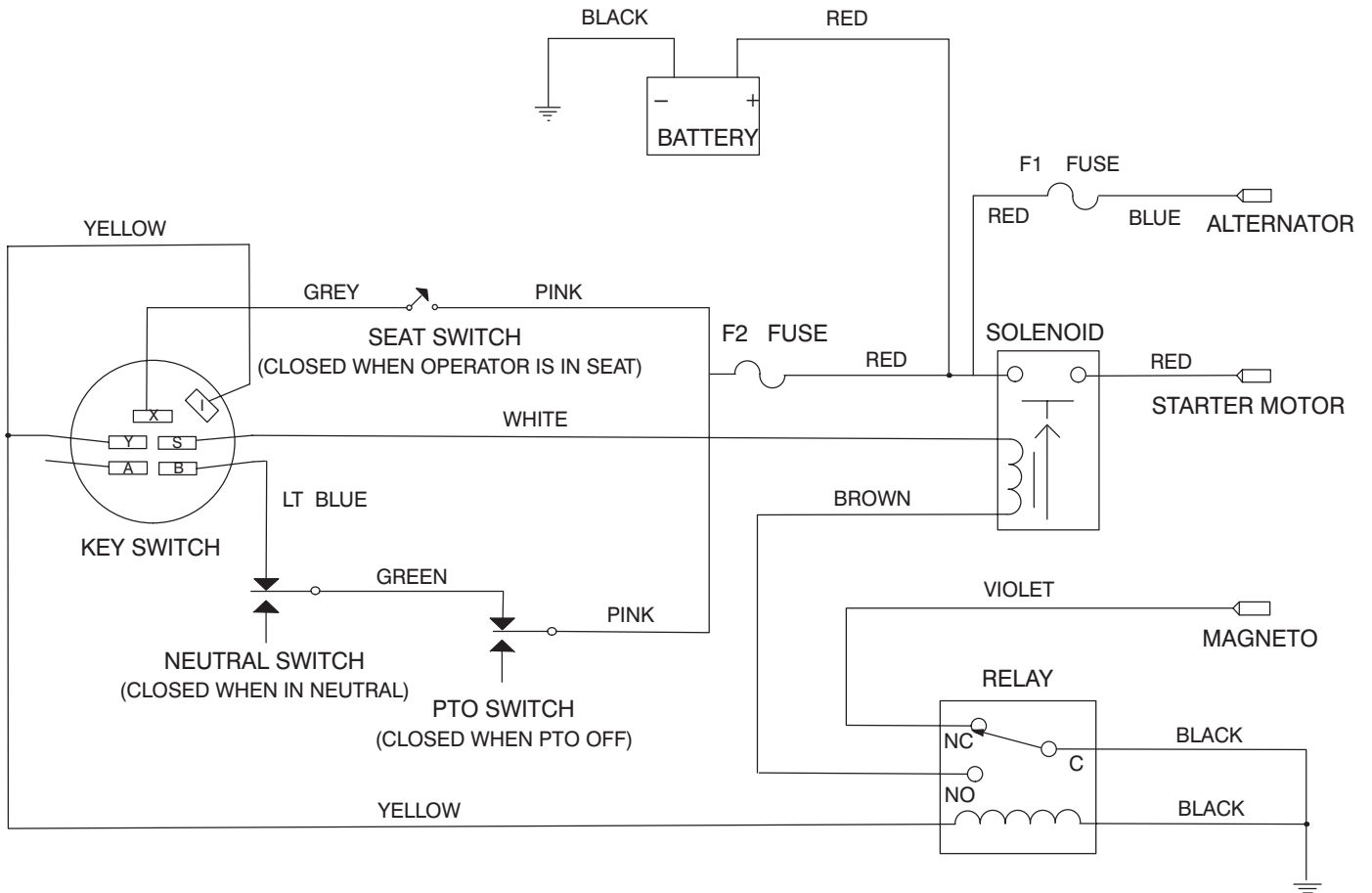


C-1525C

ENGINE ASSEMBLY

| Ref. No. | Part No. | Description | No. Used |
|----------|----------|--------------------------------------|----------|
| 3 | 3256-23 | Washer - Flat | 2 |
| 4 | 32103-12 | Nut - Wing | 1 |
| 5 | 56-7720 | Post - Hold Down, Battery | 1 |
| 6 | 56-2540 | Tube - Drain | 1 |
| 7 | 56-7710 | Hold Down - Battery | 1 |
| 8 | 80-2600 | Battery 12V | 1 |
| 9 | 321-4 | Screw - Cap Hex. Hd. | 2 |
| 10 | 32103-22 | Nut - Wing | 2 |
| 11 | 80-4560 | Spacer | 1 |
| 12 | 322-12 | Screw - Cap Hex. Hd. | 1 |
| 13 | 62-4300 | Pad - Anti-Skid | 1 |
| 14 | 83-4840 | Pulley - Engine | 1 |
| 15 | 3256-25 | Washer - Flat | 1 |
| 16 | 62-3760 | Screw - Cap Hex. Hd. | 1 |
| 17 | 54-3091 | Assembly - Wire Battery to Ground | 2 |
| 18 | 32144-14 | Screw - Self Tapping | 1 |
| 19 | 322-7 | Screw - Cap Hex. Hd. | 3 |

| Ref. No. | Part No. | Description | No. Used |
|----------|------------|--|----------|
| 20 | 67-0920 | Guide - Belt | 1 |
| 21 | 322-10 | Screw - Cap Hex. Hd. | 1 |
| 22 | 67-0962-01 | Guard - Chain | 1 |
| 23 | | Engine - 8 H.P. B & S | 1 |
| 24 | 3296-29 | Nut - Lock | 4 |
| 28 | 3255-8 | Washer - Lock | 3 |
| 29 | 288-2 | Cap - Pipe | 1 |
| 30 | 289-34 | Nipple - Pipe | 1 |
| 31 | 2811-17 | Elbow - Street | 1 |
| 32 | 2812-1 | Reducer | 1 |
| 33 | 218-560 | Cap - Battery | 6 |
| 34 | 28-8080 | Boot - Battery Terminal | 1 |
| 35 | 32153-3 | Nut - Lock | 1 |
| 36 | 93-9354 | Decal - Battery | 1 |
| 37 | 93-7276 | Decal - Danger | 1 |
| 38 | 93-6668 | Decal - Battery Charging Instructions | 1 |

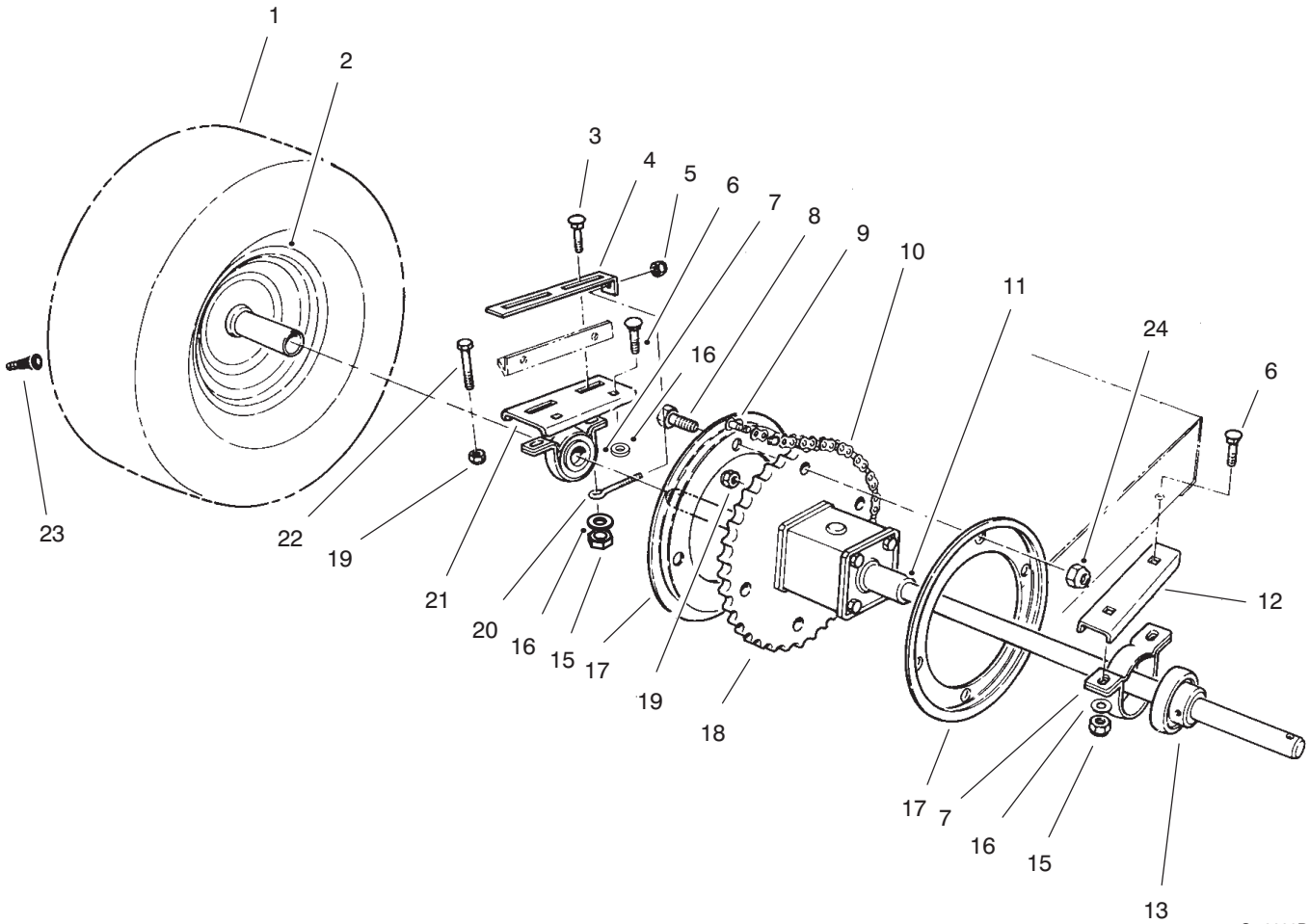


C-2378

ELECTRICAL SCHEMATIC

| Ref. No. | Part No. | Description | No. Used |
|----------|----------|----------------|----------|
| 1 | 93-7444 | Harness - Wire | 1 |

| Ref. No. | Part No. | Description | No. Used |
|----------|----------|-------------|----------|
| | | | |

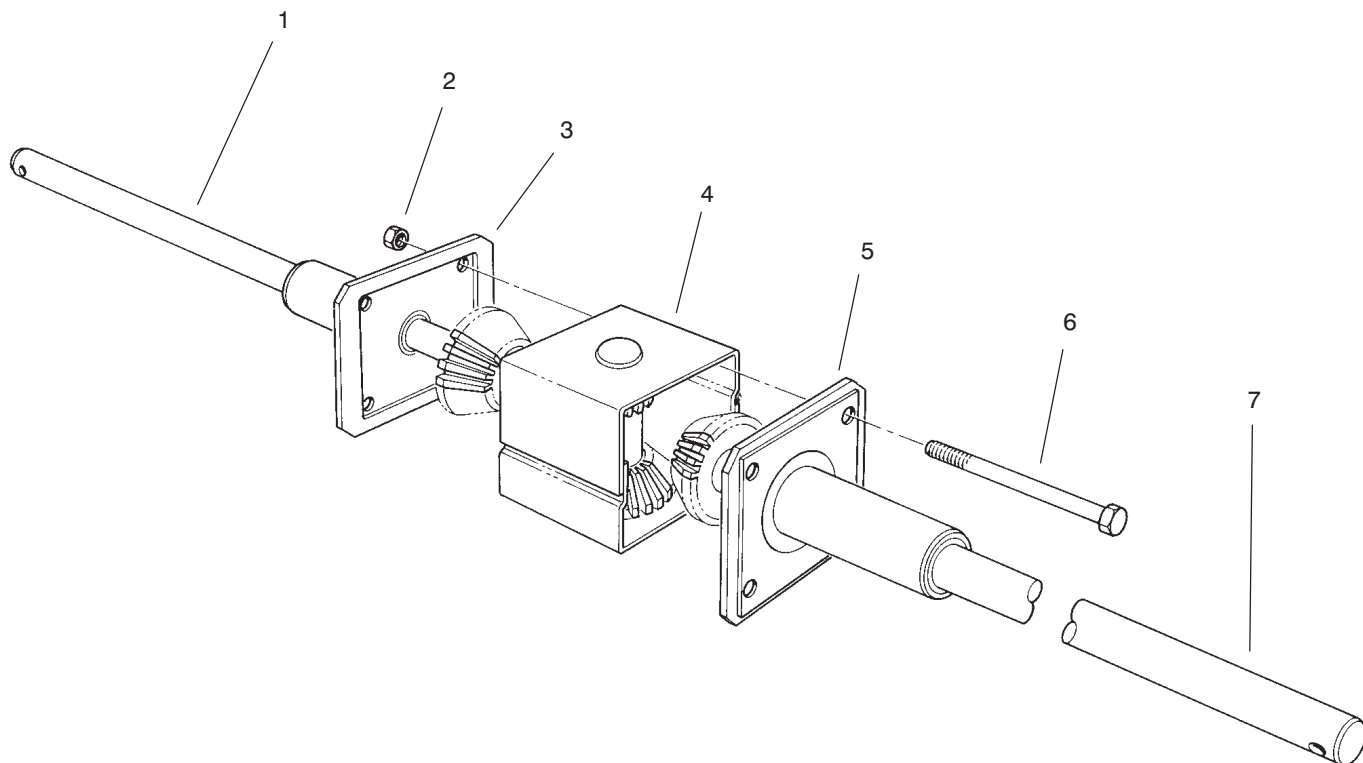


C-0008B

REAR AXLE ASSEMBLY

| Ref. No. | Part No. | Description | No. Used |
|----------|------------|--------------------------|----------|
| 1 | 231-115 | Tire | 2 |
| 2 | 44-9760 | Rim | 2 |
| 3 | 3231-4 | Bolt - Carriage | 2 |
| 4 | 61-9990 | Plate - Adjusting | 1 |
| 5 | 3296-42 | Nut - Lock | 1 |
| 6 | 3231-25 | Bolt - Carriage | 4 |
| 7 | 47-1480 | Mount - Bearing | 2 |
| 8 | 321-4 | Screw - Cap Hex. Hd. | 4 |
| 9 | 2710-11 | Link - Connecting | 1 |
| 10 | 67-0910 | Chain (Incl. Ref. #9) | 1 |
| 11 | 56-9960 | Differential | 1 |
| 12 | 66-6630-03 | Support L.H. | 1 |

| Ref. No. | Part No. | Description | No. Used |
|----------|------------|-----------------------------|----------|
| 13 | 47-1490 | Bearing (Incl. Ref. #14) | 2 |
| 15 | 3296-39 | Nut - Lock | 6 |
| 16 | 3256-24 | Washer - Flat | 6 |
| 17 | 76-1580-03 | Guide - Chain | 2 |
| 18 | 76-4010 | Sprocket | 1 |
| 19 | 3296-29 | Nut - Lock | 6 |
| 20 | 61-9980 | Screw - Adjusting | 1 |
| 21 | 66-6620-03 | Support R.H. | 1 |
| 22 | 46-2511 | Bolt - Axle | 2 |
| 23 | 232-27 | Valve Stem w/Cap | 2 |
| 24 | 3296-8 | Nut - Lock | 4 |
| * | 232-38 | Tube - Inner | 2 |

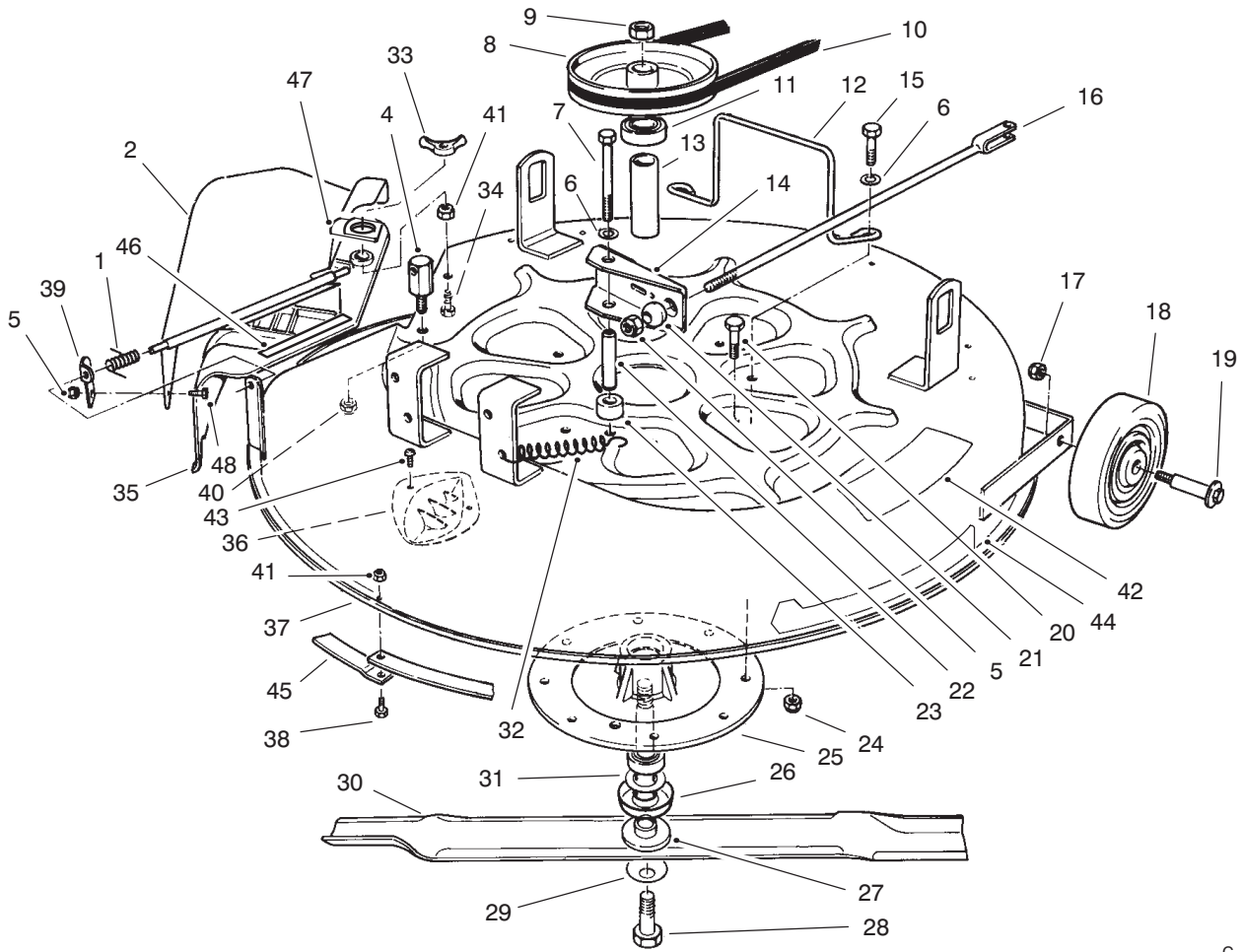


C-0010

DIFFERENTIAL ASSEMBLY

| Ref. No. | Part No. | Description | No. Used |
|----------|----------|-----------------------|----------|
| 1 | 55-7762 | Axle - R.H. | 1 |
| 2 | 32152-1 | Nut - Lock | 4 |
| 3 | 55-7770 | Cap - End, R.H. | 1 |
| 4 | 55-7780 | Case - Gear, Transfer | 1 |

| Ref. No. | Part No. | Description | No. Used |
|----------|----------|-------------------------|----------|
| 5 | 55-7771 | Cap - End, L.H. | 1 |
| 6 | 322-22 | Screw - Cap Hex. Hd. | 4 |
| 7 | 55-7763 | Axle - L.H. | 1 |
| * | 56-9960 | Differential - Complete | 1 |

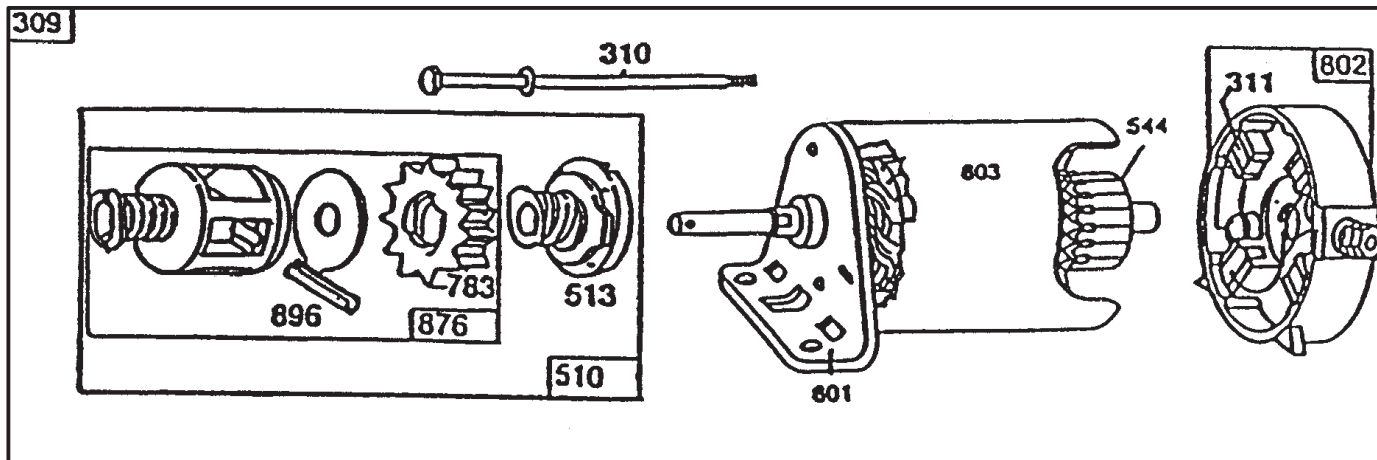


C-1943B

CUTTING UNIT ASSEMBLY

| Ref. No. | Part No. | Description | No. Used |
|----------|----------|------------------------|----------|
| 1 | 28-8010 | Spring | 1 |
| 2 | 67-1150 | Deflector | 1 |
| 4 | 67-0140 | Post - Pivot | 1 |
| 5 | 3296-8 | Nut - Lock | 2 |
| 6 | 3256-23 | Washer - Lock | 3 |
| 7 | 322-22 | Screw - Cap Hex. Hd. | 1 |
| 8 | 80-4460 | Pulley - Deck | 1 |
| 9 | 3219-6 | Nut - Hex. | 1 |
| 10 | 67-1390 | V-Belt | 1 |
| 11 | 38-7820 | Bearing - Ball | 2 |
| 12 | 80-4520 | Guide - Belt | 1 |
| 13 | 62-3660 | Spacer - Bearing | 1 |
| 14 | 67-1370 | Assy. - Brake, Deck | 1 |
| 15 | 322-6 | Screw - Cap Hex. Hd. | 2 |
| 16 | 67-0570 | Rod W.A. - Brake, Deck | 1 |
| 17 | 3296-39 | Nut - Lock | 2 |
| 18 | 61-9760 | Wheel - Deck | 2 |
| 19 | 56-6590 | Bolt - Wheel | 2 |
| 20 | 322-3 | Screw - Cap Hex. Hd. | 6 |
| 21 | 67-0710 | Ball - Swivel | 1 |
| 22 | 67-0730 | Post - Mount, Brake | 1 |
| 23 | 67-0740 | Spacer - Brake, Deck | 1 |
| 24 | 3296-29 | Nut - Lock | 9 |
| 25 | 67-0970 | Hub - Spindle | 1 |

| Ref. No. | Part No. | Description | No. Used |
|----------|------------|--------------------------|----------|
| 26 | 80-4360 | Shield - Bearing | 1 |
| 27 | 80-4340 | Shaft - Spindle | 1 |
| 28 | 26-0671 | Bolt - Blade | 1 |
| 29 | 3290-465 | Washer - Belleville | 1 |
| 30 | 80-4530 | Blade | 1 |
| 31 | 80-4380 | Spacer - Spindle | 1 |
| 32 | 67-1440 | Spring - Brake | 1 |
| 33 | 32109-14 | Nut - Wing | 1 |
| 34 | 3234-21 | Screw - Cap Hex. Hd. | 1 |
| 35 | 80-4450 | Cover - Recycler | 1 |
| 36 | 80-4510 | Kicker | 4 |
| 37 | 16-2199 | Deck (Incl. Ref. #42) | 1 |
| 38 | 321-5 | Screw - Cap Hex. Hd. | 8 |
| 39 | 67-1600-01 | Bracket - Deflector | 1 |
| 40 | 3296-59 | Nut - Lock | 1 |
| 41 | 3296-42 | Nut - Lock | 9 |
| 42 | 76-4070 | Decal - Danger | 1 |
| 43 | 32144-111 | Screw - Special | 8 |
| 44 | 92-9522 | Decal - Recycler | 1 |
| 45 | 80-4540-03 | Ring - Deck, Recycler | 4 |
| 46 | 68-3650 | Decal - Warning | 1 |
| 47 | 83-6610 | Tab - Hold Down | 1 |
| 48 | 321-4 | Screw - Cap Hex. Hd. | 1 |



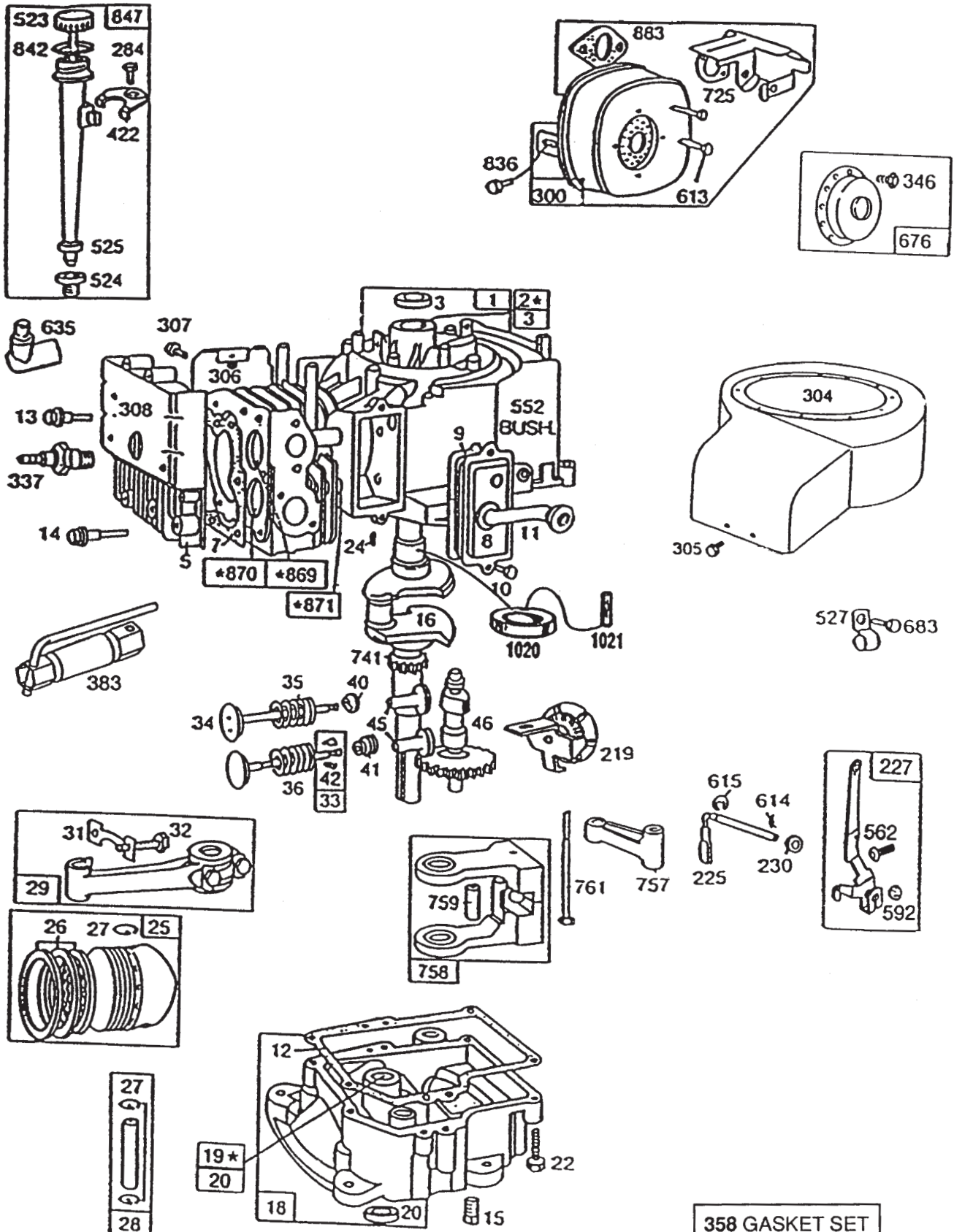
C-0784

STARTER – BRIGGS & STRATTON NO. 195707-0121-01

| Ref. No. | Part No. | Description | No. Used |
|----------|----------|---|----------|
| 309 | 394805 | Assembly – Motor & Drive | 1 |
| 310 | 94003 | Assembly – Thru Bolt | 2 |
| 311 | 395538 | Assembly – Brush | 2 |
| 510 | 490421 | Assembly – Drive (Incl. Ref. #513, 783, 876 & 896) | 1 |
| 513 | 398003 | Assembly – Clutch | 1 |
| 544 | 390837 | Assembly – Armature | 1 |

| Ref. No. | Part No. | Description | No. Used |
|----------|----------|---------------------------------------|----------|
| 783 | 280104 | Gear | 1 |
| 801 | 394856 | Assembly – End Cap | 1 |
| 802 | 395537 | Assembly – Commutator, End Cap | 1 |
| 803 | 398159 | Assembly – Housing (3-21/32" Long) | 1 |
| 876 | 490467 | Kit – Retainer | 1 |
| 896 | 94288 | Pin – Roll | 1 |

BRIGGS & STRATTON MODEL NO. 195707-0121-01



* REQUIRES SPECIAL TOOLS TO INSTALL.
SEE REPAIR INSTRUCTION MANUAL.

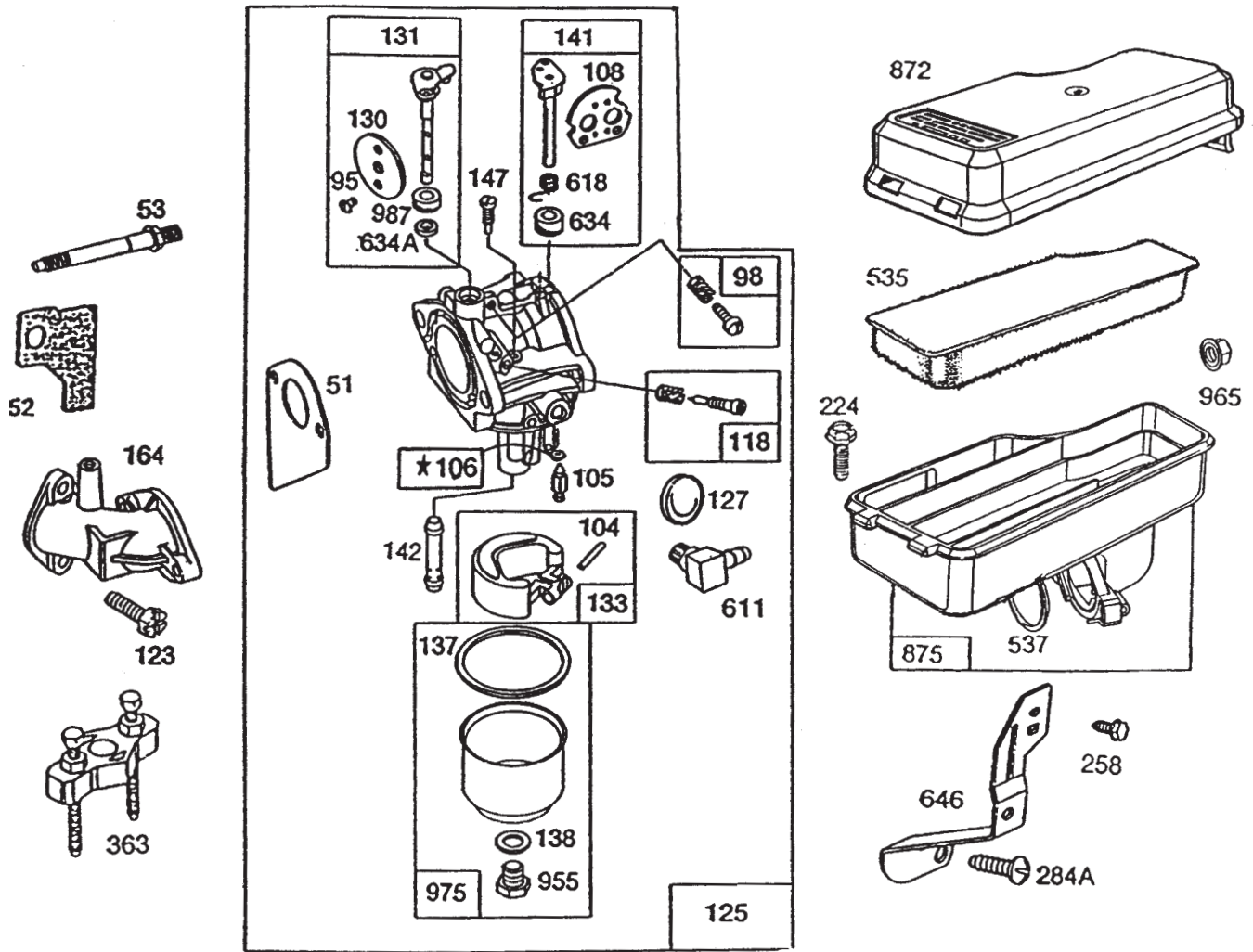
Assemblies include all parts shown in frames.

BRIGGS & STRATTON MODEL NO. 195707-0121-01

| Ref. No. | Part No. | Description | No. Used | Ref. No. | Part No. | Description | No. Used |
|----------|----------|---|----------|----------|----------|---|----------|
| 1 | 396269 | Assembly – Cylinder | 1 | 32 | 92659 | Screw – Connecting Rod | 1 |
| 2 | 399267 | Bearing – Cylinder Note: Requires special tools for installation. | 1 | 33 | 390419 | Valve – Exhaust | 1 |
| 3 | 294606 | Seal – Oil | 1 | 34 | 261055 | Valve – Intake | 1 |
| 5 | 212286 | Head – Cylinder | 1 | 35 | 65906 | Spring – Valve, Intake | 1 |
| *7 | 272163 | Gasket – Head, Cylinder | 1 | 36 | 26828 | Spring – Valve, Exhaust | 1 |
| 8 | 391406 | Assembly – Breather | 1 | 40 | 221596 | Retainer – Valve, Intake | 1 |
| *9 | 27803 | Gasket – Cover, Valve | 1 | 41 | 292260 | Rotocoil – Valve, Exhaust | 1 |
| 10 | 94621 | Screw | 1 | 42 | 93630 | Retainer – Valve, Exhaust Rotocoil | 2 |
| 11 | 280005 | Tube – Breather | 1 | 45 | 260933 | Tappet – Valve | 1 |
| *12 | 271701 | Gasket – Cover, Crankcase 1/64" Thick | 1 | 46 | 211689 | Gear – Cam | 1 |
| * | 27876 | Gasket – Cover, Crankcase .005" Thick | 1 | 225 | 231058 | Crank – Gov. (1/4" Dia.) | 1 |
| * | 27877 | Gasket – Cover, Crankcase .009" Thick | 1 | 227 | 43935 | Assy. Lever – Governor for 1/4" Dia. Crank | 1 |
| 13 | 94565 | Screw – Head, Cylinder | 1 | 230 | 222450 | Washer – Lever, Governor (1/4" Inside Diameter) | 1 |
| 14 | 93723 | Screw – Head, Cylinder (3" Long) | 1 | 284 | 94419 | Screw – Clamp, Mounting | 1 |
| 15 | 94239 | Plug – Drain, Oil | 1 | 300 | 398507 | Muffler – Exhaust | 1 |
| 16 | 396876 | Crankshaft Note: Order Part 94388 for timing gear pin replacement. | 1 | 304 | 494084 | Housing – Blower | 1 |
| 18 | 392548 | Base – Engine | 1 | 305 | 94608 | Screw – Blower Hsg., Sems | 1 |
| 19 | 295963 | Bushing – Base, Engine Note: Requires special tool for installation. | 1 | 306 | 224543 | Shield – Cylinder | 1 |
| 20 | 391086 | Seal – Oil | 1 | 307 | 93949 | Screw – Shield, Cylinder | 1 |
| 22 | 93585 | Screw – Base, Mounting | 1 | 308 | 222636 | Cover – Head, Cylinder | 1 |
| 24 | 222698 | Key – Flywheel | 1 | 337 | 802592 | Plug – Spark | 1 |
| 25 | 391673 | Assy. – Piston, Std. | 1 | 346 | 93705 | Screw | 1 |
| | 391674 | Assy. – Piston, .010" O.S. | 1 | 358 | 299577 | Gasket Set | 1 |
| | 391675 | Assy. – Piston, .020" O.S. | 1 | 383 | 89838 | Wrench – Spark Plug | 1 |
| | 391676 | Assy. – Piston, .030" O.S. PISTON RING SETS Note: For Chrome Piston Ring Set – Standard Size – Order No. 299743. | 1 | 422 | 223394 | Clamp – Tube, Oil Filler | 1 |
| 26 | 391669 | Ring Set – Piston, Std. | 1 | 523 | 391840 | Cap & Dipstick – Oil Filler | 1 |
| | 391670 | Ring Set – Piston, .010" O.S. | 1 | 524 | 68838 | Seal – Tube, Filler | 1 |
| | 391671 | Ring Set – Piston, .020" O.S. | 1 | 525 | 280133 | Tube – Filler, Oil | 1 |
| | 391672 | Ring Set – Piston, .030" O.S. | 1 | 527 | 221428 | Clamp | 1 |
| 27 | 68546 | Lock – Piston Pin | 1 | 552 | 491986 | Bushing – Crank, Gov. | 1 |
| 28 | 295840 | Assy. – Piston Pin, Std. | 1 | 562 | 92613 | Bolt – Lever, Governor | 1 |
| | 295841 | Assy. – Piston Pin, .005" O.S. | 1 | 592 | 231082 | Nut – Hex. | 1 |
| 29 | 390402 | Assy. – Rod, Connecting Note: For Connecting Rod with .020" Undersize Crankpin Bore – Order No. 390773. | 1 | 613 | 94042 | Screw – Muffler | 1 |
| 31 | 222114 | Lock – Screw, Conn. Rod | 1 | 614 | 93306 | Pin – Hair, Cotter | 1 |
| | | | | 615 | 93307 | Retainer – E-Ring | 1 |
| | | | | 635 | 66538 | Elbow – Plug, Spark | 1 |
| | | | | 676 | 395700 | Deflector – Exhaust | 1 |
| | | | | 683 | 93572 | Screw | 1 |
| | | | | 725 | 223540 | Shield – Muffler | 1 |
| | | | | 741 | 262479 | Gear – Timing | 1 |
| | | | | 757 | 212359 | Link – Counterweight | 1 |
| | | | | 758 | 390172 | Assy. – Counterweight | 1 |
| | | | | 759 | 298909 | Pin – Counterweight | 1 |
| | | | | 761 | 93874 | Screw – Counterweight | 1 |
| | | | | 836 | 93559 | Screw | 1 |
| | | | | 842 | 270920 | Seal – Cap, Filler | 1 |
| | | | | 847 | 392066 | Filler Group – Oil | 1 |
| | | | | 869 | 211661 | Seat – Valve, Intake (Std.) | 1 |
| | | | | 870 | 211661 | Seat – Valve, Exhaust (Std.) | 1 |
| | | | | 871 | 231218 | Guide – Exhaust or Intake Valve, See repair manual | 1 |
| | | | | 883 | 272309 | Gasket – Pipe, Exhaust | 1 |
| | | | | 1020 | 261190 | Eccentric | 1 |
| | | | | 1021 | 94160 | Pin – Eccentric | 1 |

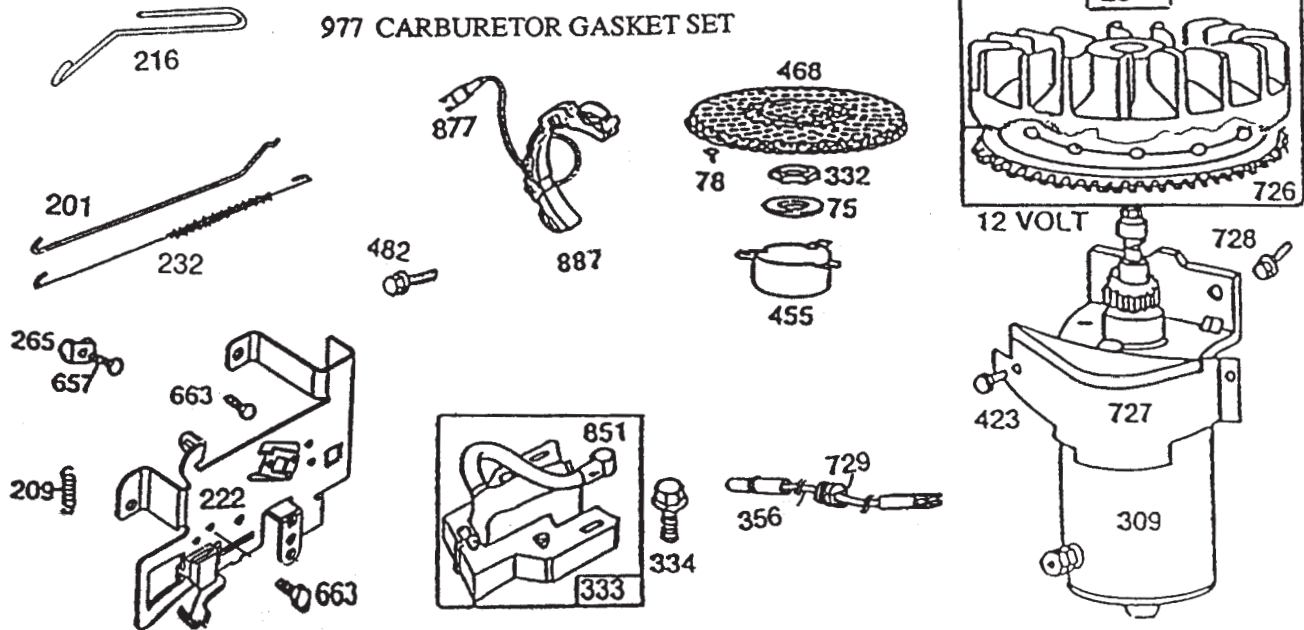
*Included in Gasket Set – Part No. 299577.

BRIGGS & STRATTON MODEL NO. 195707-01



121 CARBURETOR OVERHAUL KIT

977 CARBURETOR GASKET SET



* REQUIRES SPECIAL TOOLS TO INSTALL.
SEE REPAIR INSTRUCTION MANUAL.

Assemblies include all parts shown in frames.

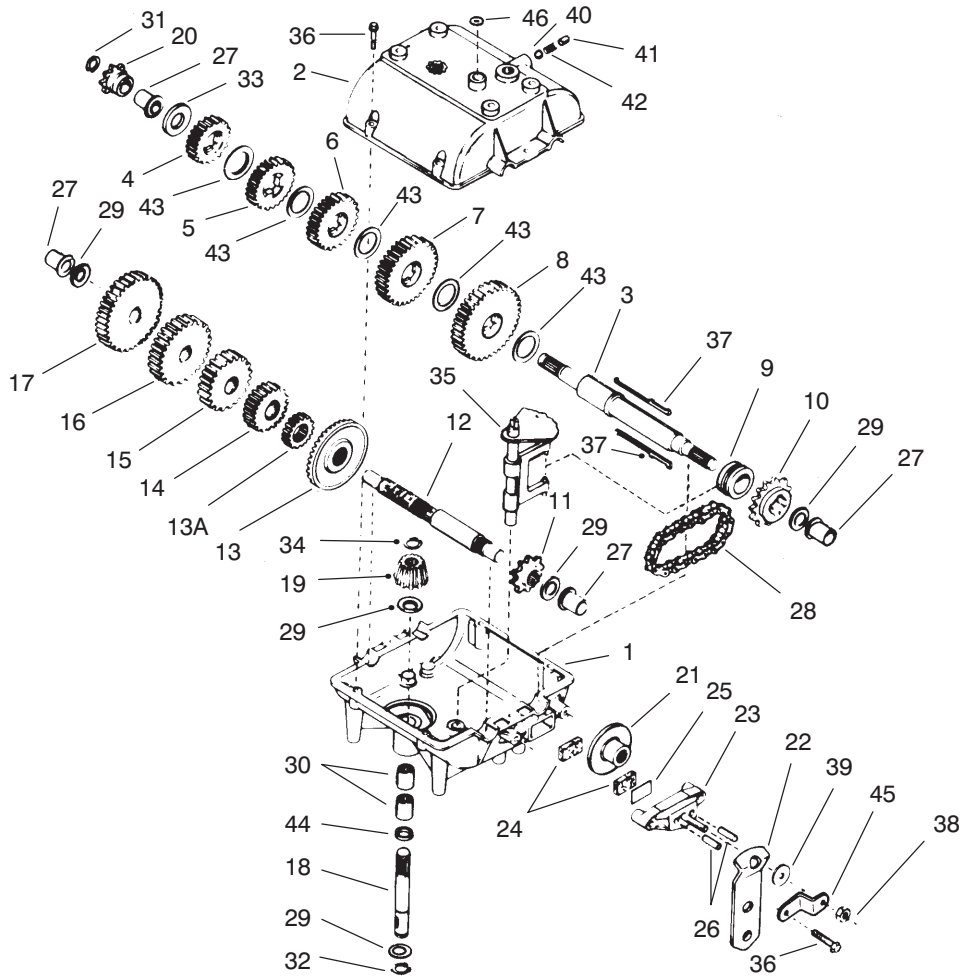
BRIGGS & STRATTON MODEL NO. 195707-0121-01

| Ref. No. | Part No. | Description | No. Used | Ref. No. | Part No. | Description | No. Used |
|----------|----------|---|----------|----------|----------|---|----------|
| 223 | 391983 | Flywheel and Ring Gear Assy. - Magneto (Incl. Aluminum Ring Gear) | 1 | 332 | 92284 | Nut - Flywheel | 1 |
| *#51 | 272465 | Gasket - Carburetor (Carb. to Elbow) | 1 | 333 | 398811 | Armature Assembly | 1 |
| ‡52 | 270824 | Gasket - Carb. Mtg. | 1 | 334 | 93381 | Screw - Armature Mtg. Sem | 1 |
| 53 | 94637 | Stud - Gasket Mtg. | 1 | 356 | 494328 | Wire - Ground | 1 |
| 75 | 224061 | Washer - Spring | 1 | 363 | 19165 | Puller - Flywheel | 1 |
| 78 | 93805 | Screw - Sem | 1 | 423 | 94073 | Screw - Sem | 1 |
| *95 | 94098 | Screw - Throttle | 1 | 455 | 222561 | Cup - Screen Mounting | 1 |
| 98 | 494382 | Screw - Idle Speek | 1 | 468 | 222562 | Screen - Flush Rotating | 1 |
| *104 | 231789 | Pin - Float Hinge | 1 | 482 | 93621 | Screw - Sem | 1 |
| *105 | 231790 | Valve Assy. - Inlet Needle | 1 | 535 | 272405 | Element - Foam Air Cleaner | 1 |
| *106 | 281169 | Inlet Valve Seat | 1 | 537 | 281106 | O-Ring - Air Cleaner | 1 |
| 108 | 224540 | Valve - Choke | 1 | 611 | 494451 | Fuel Inlet Tube | 1 |
| 118 | 494383 | Valve - Needle | 1 | 618 | 262803 | Spring - Choke Return | 1 |
| 121 | 494880 | Carburetor Overhaul Kit | 1 | *634 | 281168 | Seal - Choke Shaft | 1 |
| 123 | 94616 | Screw - Carburetor Mtg. | 1 | *634A | 281167 | Washer - Throttle Shaft | 1 |
| 125 | 494894 | Carburetor Assembly | 1 | 646 | 224614 | Brace - Air Cleaner | 1 |
| *127 | | Plug - Welch (Kit Only) | 1 | 657 | 93496 | Screw - Sem | 1 |
| 130 | 224668 | Valve - Throttle | 1 | 663 | 94419 | Screw | 1 |
| 131 | 494885 | Shaft & Lever - Throttle | 1 | 726 | 392134 | Gear - Ring (Aluminum) (Incl. Mtg. Parts) | 1 |
| 133 | 494381 | Float - Carburetor | 1 | 727 | 395405 | Cover - Starter (Incl. Mtg. Screws) | 1 |
| *#137 | 281165 | Gasket - Float Bowl | 1 | 728 | 93535 | Screw - Sem | 1 |
| *#138 | 281164 | Washer - Float Bowl | 1 | 729 | 281159 | Clip - Lead Wire | 1 |
| 141 | 494380 | Shaft & Lever - Choke | 1 | 851 | 221798 | Terminal - Ignition Cable | 1 |
| *142 | 494877 | Nozzle - Carburetor | 1 | 872 | 281108 | Cover - Air Cleaner | 1 |
| *147 | 231794 | Screw - Nozzle | 1 | 875 | 494745 | Body - Air Cleaner | 1 |
| 164 | 213819 | Carburetor Elbow | 1 | 877 | 393814 | Diode & Connector Assy. | 1 |
| 201 | 262769 | Link - Governor | 1 | 887 | 391529 | Stator Assembly - Alternator (D.C.) | 1 |
| 209 | 260871 | Spring - Governor | 1 | 955 | 94642 | Screw - Fuel Bowl | 1 |
| 216 | 262768 | Link - Choke | 1 | 965 | 94108 | Nut - Lock | 1 |
| 222 | 493896 | Plate - Gov. Plate | 1 | 975 | 494378 | Bowl Assy. - Carburetor | 1 |
| 224 | 94513 | Screw - Sem | 1 | *987 | 281166 | Seal - Throttle Shaft | 1 |
| 232 | 262787 | Spring - Governor Link | 1 | | | | |
| 258 | 94620 | Screw - Hex. Tapping | 1 | | | | |
| 265 | 221535 | Clamp - Casing | 1 | | | | |
| 284A | 94326 | Screw - Brace Mtg. | 1 | | | | |
| 309 | | Motor - Starting (12 Volt) See Chart for Replacement Parts for Starting Motor on Illustrated Pages | 1 | | | | |

*Included in Carburetor Overhaul Set - Part No. 494880.

‡Included in Carburetor Gasket Set - Part No. 494385.

‡Included in Gasket Set - Part No. 299577.



C-0441

TRANSMISSION PEERLESS MODEL 700-025

| Ref. No. | Part No. | Description | No. Used |
|----------|----------|-------------------------|----------|
| 1 | 770061 | Case – Transmission | 1 |
| 2 | 772083 | Cover – Transmission | 1 |
| 3 | 776217 | Shaft – Output | 1 |
| 4 | 778121A | Gear – Spur (20 Teeth) | 1 |
| 5 | 778122A | Gear – Spur (22 Teeth) | 1 |
| 6 | 778123A | Gear – Spur (25 Teeth) | 1 |
| 7 | 778124A | Gear – Spur (30 Teeth) | 1 |
| 8 | 778125 | Gear – Spur (35 Teeth) | 1 |
| 9 | 784266 | Collar – Shift | 1 |
| 10 | 786083 | Sprocket (18 Teeth) | 1 |
| 11 | 786082 | Sprocket (9 Teeth) | 1 |
| 12 | 776134 | Shaft – Counter | 1 |
| 13 | 788137A | Gear – Bevel (42 Teeth) | 1 |
| 13A | 778136 | Gear – Spur (15 Teeth) | 1 |
| 14 | 778126A | Gear – Spur (20 Teeth) | 1 |
| 15 | 778127A | Gear – Spur (25 Teeth) | 1 |
| 16 | 778128A | Gear – Spur (28 Teeth) | 1 |
| 17 | 778129A | Gear – Spur (30 Teeth) | 1 |
| 18 | 776135 | Shaft – Input | 1 |
| 19 | 778113A | Bevel – Pinion, Input | 1 |
| 20 | 786047 | Sprocket (8 Teeth) | 1 |
| 21 | 790003 | Disk – Brake | 1 |
| 22 | 790008A | Lever – Brake | 1 |
| 23 | 790025 | Holder – Pad, Brake | 1 |

| Ref. No. | Part No. | Description | No. Used |
|----------|----------|--|----------|
| 24 | 790006 | Pad – Brake | 2 |
| 25 | 790007 | Plate – Pad, Brake | 1 |
| 26 | 786026 | Pin – Dowel | 2 |
| 27 | 780105A | Bushing – Flange | 4 |
| 28 | 786081 | Chain – Roller (No. 41 Chain, 24 Links) | 1 |
| 29 | 780072 | Washer – Thrust | 5 |
| 30 | 780086 | Bearing – Needle | 2 |
| 31 | 792072 | Ring – Retaining | 1 |
| 32 | 792035 | Ring – Retaining | 1 |
| 33 | 780109 | Washer | 1 |
| 34 | 788040 | Ring – Retaining | 1 |
| 35 | 784267 | Assy. Rod & Fork – Shift | 1 |
| 36 | 792073 | Screw – Thread Forming | 8 |
| 37 | 792089A | Key | 2 |
| 38 | 792075 | Nut – Lock | 1 |
| 39 | 792076 | Washer | 1 |
| 40 | 792077 | Ball – Steel | 1 |
| 41 | 792078 | Screw – Set | 1 |
| 42 | 792079 | Spring | 1 |
| 43 | 780108 | Washer – Thrust | 5 |
| 44 | 792001 | O-Ring | 1 |
| 45 | 786086 | Bracket – Lever, Brake | 1 |
| 46 | 788069 | Seal – Square Cut | 1 |

TORO PART NUMBER INDEX

3319-276

| Part No. | Description | Pg. No. | Ref. No. | Qty. | Part No. | Description | Pg. No. | Ref. No. | Qty. |
|------------|---------------------------|---------|----------|------|------------|---------------------------|---------|----------|------|
| 110513 | Bearing | 4 | 16 | 4 | 66-6920 | Pad - Isolator | 3 | 17 | 2 |
| 9104784 | Screw - Pan Head | 5 | 26 | 2 | 67-0010-03 | Lift W.A. - Front, Deck | 2 | 5 | 1 |
| 9104784 | Screw - Tapping | 6 | 42 | 2 | 67-0050-01 | Tube W.A. - Support Rear | 2 | 11 | 1 |
| 12-5820 | Pulley - Idler, Traction | 6 | 25 | 1 | 67-0080 | Link - H.O.C. | 5 | 23 | 1 |
| 12-9020 | Retainer - Belt | 6 | 21 | 1 | 67-0090-03 | Bracket - Link, H.O.C. | 2 | 10 | 1 |
| 13-6049 | Kit - Loose parts | 2 | * | 1 | 67-0140 | Post - Pivot | 12 | 4 | 1 |
| 16-2199 | Deck | 12 | 37 | 1 | 67-0231-01 | Body W.A. - Rear | 5 | 13 | 1 |
| 18-2970 | R-Clamp | 3 | 4 | 1 | 67-0270 | Handle W.A. - H.O.C. | 5 | 21 | 1 |
| 19-1470 | Bolt - Shoulder | 1 | 18 | 1 | 67-0300-01 | Lever W.A. - H.O.C. | 2 | 18 | 2 |
| 19-1610-03 | Lever - Brake, Parking | 1 | 19 | 1 | 67-0330-03 | Idler - Plate, Mount | 6 | 30 | 1 |
| 19-1970 | Spring - Brake, Parking | 1 | 13 | 1 | 67-0360 | Bracket - Arm, Idler | 6 | 27 | 1 |
| 19-2200 | Tip - Brake, Parking | 1 | 20 | 1 | 67-0400 | Mount - Pivot | 6 | 19 | 1 |
| 20-3220 | Washer - Flat | 7 | 66 | 2 | 67-0410 | Spacer - Pivot | 6 | 16 | 1 |
| 26-0671 | Bolt - Blade | 12 | 28 | 1 | 67-0420-03 | Plate - Mount, Idler | 6 | 18 | 1 |
| 26-6700 | Spring - Return, Brake | 6 | 10 | 1 | 67-0430 | Rod - Clutch | 2 | 6 | 1 |
| 26-9530 | Washer - Pivot | 1 | 8 | 1 | 67-0440 | Spacer - Steering | 2 | 32 | 1 |
| 28-0540 | Bolt - Shoulder | 5 | 18 | 1 | 67-0450-01 | Frame W.A. - Front | 2 | 25 | 1 |
| 28-2480 | Washer - Flat | 4 | 2 | 2 | 67-0520-01 | Channel - R.H. | 2 | 3 | 1 |
| 28-8010 | Spring | 12 | 1 | 1 | 67-0530-01 | Channel - L.H. | 2 | 24 | 1 |
| 28-8080 | Boot - Battery Terminal | 8 | 34 | 1 | 67-0540-03 | Tube W.A. - Pivot | 6 | 6 | 1 |
| 38-1420 | Switch - Seat | 3 | 3 | 1 | 67-0570 | Rod W.A. - Brake, Deck | 12 | 16 | 1 |
| 38-7820 | Bearing - Ball | 12 | 11 | 2 | 67-0600-03 | Lever W.A. - Deck Engage | 6 | 45 | 1 |
| 44-7030 | Tread - Foot Rest | 1 | 3 | 2 | 67-0640 | Handle - Deck Engage | 6 | 46 | 1 |
| 44-7140-01 | Mount - Bearing, Axle | 2 | 2 | 1 | 67-0660 | Bracket - Mount, Shifter | 7 | 65 | 1 |
| 44-9760 | Rim | 10 | 2 | 2 | 67-0670 | Bracket - Engage, Deck | 7 | 62 | 1 |
| 46-2511 | Bolt - Axle | 10 | 22 | 2 | 67-0690-03 | Flat - Deck Engage | 6 | 3 | 1 |
| 46-2511 | Bolt - Mounting, Axle | 2 | 19 | 2 | 67-0710 | Ball - Swivel | 12 | 21 | 1 |
| 47-1480 | Mount - Bearing | 10 | 7 | 2 | 67-0730 | Post - Mount, Brake | 12 | 22 | 1 |
| 47-1490 | Bearing | 10 | 13 | 2 | 67-0740 | Spacer - Brake, Deck | 12 | 23 | 1 |
| 47-2964 | Hose - Gas | 3 | 9 | 2 | 67-0750 | Bracket - Mount, Spring | 6 | 43 | 1 |
| 47-2986 | Hose - Gas | 3 | 5 | 1 | 67-0790-03 | Support W.A. - Seat | 5 | 10 | 1 |
| 48-4700 | Relay | 5 | 17 | 1 | 67-0800-01 | Spindle - R.H. | 4 | 15 | 1 |
| 49-3242 | Wheel - Steering | 2 | 34 | 1 | 67-0810-01 | Spindle - L.H. | 4 | 12 | 1 |
| 54-3091 | Assembly - Wire | 8 | 17 | 2 | 67-0830-03 | Shaft W.A. - Steering | 2 | 26 | 1 |
| 55-3576 | Assembly - Cap, Gas | 3 | 8 | 1 | 67-0850 | Bushing - Steering | 2 | 29 | 2 |
| 55-7103 | Tower | 1 | 22 | 1 | 67-0860 | Washer - Steering | 2 | 30 | 1 |
| 55-7762 | Axle - R.H. | 11 | 1 | 1 | 67-0870 | Bolt - Shoulder | 5 | 22 | 2 |
| 55-7763 | Axle - L.H. | 11 | 7 | 1 | 67-0870 | Bolt - Shoulder | 2 | 27 | 2 |
| 55-7770 | Cap - End, R.H. | 11 | 3 | 1 | 67-0880 | Assembly - Tie Rod | 4 | 11 | 2 |
| 55-7771 | Cap - End, L.H. | 11 | 5 | 1 | 67-0900 | Belt - Traction | 6 | 39 | 1 |
| 55-7780 | Case - Gear, Transfer | 11 | 4 | 1 | 67-0910 | Chain | 10 | 10 | 1 |
| 56-2540 | Tube - Drain | 8 | 6 | 1 | 67-0920 | Guide - Belt | 8 | 20 | 1 |
| 56-6360 | Filter | 3 | 10 | 1 | 67-0920 | Guide - Belt | 6 | 35 | 1 |
| 56-6590 | Bolt - Wheel | 12 | 19 | 2 | 67-0930 | Guide R.H. - Belt, Engine | 6 | 8 | 1 |
| 56-7620 | Lever - Shift | 7 | 52 | 1 | 67-0940 | Guide L.H. - Belt, Engine | 6 | 14 | 1 |
| 56-7710 | Hold Down - Battery | 8 | 7 | 1 | 67-0950 | Strap - Tank, Gas | 3 | 6 | 2 |
| 56-7720 | Post - Hold Down, Battery | 8 | 5 | 1 | 67-0962-01 | Guard - Chain | 8 | 22 | 1 |
| 56-7730 | Spring | 7 | 57 | 1 | 67-0970 | Hub - Spindle | 12 | 25 | 1 |
| 56-7740 | Spacer | 7 | 58 | 1 | 67-0990 | Axle - Front | 4 | 9 | 1 |
| 56-9870 | Pulley - Idler, Deck | 6 | 29 | 1 | 67-1030 | Cover - Panel, Control | 5 | 42 | 1 |
| 56-9960 | Differential | 10 | 11 | 1 | 67-1070-01 | Body W.A. - Front | 1 | 15 | 1 |
| 56-9960 | Differential - Complete | 11 | * | 1 | 67-1090-01 | Support W.A. - Seat | 5 | 29 | 1 |
| 61-9760 | Wheel - Deck | 12 | 18 | 2 | 67-1130-03 | Pedal - Brake & Clutch | 1 | 14 | 2 |
| 61-9780 | Cap - Hub | 4 | 1 | 2 | 67-1150 | Deflector | 12 | 2 | 1 |
| 61-9980 | Screw - Adjusting | 10 | 20 | 1 | 67-1242-01 | Base - Seat | 3 | 2 | 1 |
| 61-9990 | Plate - Adjusting | 10 | 4 | 1 | 67-1270 | Decal - Panel, Control | 5 | 39 | 1 |
| 62-3660 | Spacer - Bearing | 12 | 13 | 1 | 67-1330-03 | Lever - Brake, Bellcrank | 1 | 10 | 1 |
| 62-3760 | Screw - Cap Hex. Hd. | 8 | 16 | 1 | 67-1340 | Rod - Brake, Transmission | 1 | 9 | 1 |
| 62-4300 | Pad - Anti-Skid | 8 | 13 | 1 | 67-1350 | Rod - Front, Brake | 1 | 12 | 1 |
| 63-8360 | Key | 5 | 40 | 1 | 67-1370 | Assy. - Brake, Deck | 12 | 14 | 1 |
| 65-2920 | Pad - Pedal | 1 | 17 | 2 | 67-1390 | V-Belt | 12 | 10 | 1 |
| 66-6620-03 | Support R.H. | 10 | 21 | 1 | 67-1400 | Transmission | 7 | 49 | 1 |
| 66-6630-03 | Support L.H. | 10 | 12 | 1 | 67-1430 | Spring - Compression | 1 | 7 | 1 |
| 66-6640 | Control - Throttle | 5 | 34 | 1 | 67-1440 | Spring - Brake | 12 | 32 | 1 |

*Not Illustrated

TORO PART NUMBER INDEX (Cont.)

| Part No. | Description | Pg. No. | Ref. No. | Qty. | Part No. | Description | Pg. No. | Ref. No. | Qty. |
|------------|--------------------------|---------|----------|------|----------|---------------------------|---------|----------|------|
| 67-1450 | Spring - Extension | 1 | 11 | 1 | 231-116 | Tire | 4 | 3 | 2 |
| 67-1460 | Washer - Flat | 2 | 15 | 2 | 232-27 | Valve Stem w/Cap | 4 | 17 | 2 |
| 67-1480 | Brace - Support, Seat | 5 | 8 | 2 | 232-27 | Valve Stem w/Cap | 10 | 23 | 2 |
| 67-1500-03 | Bar - Stand | 5 | 5 | 1 | 232-38 | Tube - Inner | 10 | * | 2 |
| 67-1510-03 | Brace - Stop, Deck | 2 | 13 | 2 | 232-44 | Tube - Inner | 4 | * | 2 |
| 67-1530 | Assembly - Pin, Clevis | 7 | 70 | 1 | 233-22 | Knob | 5 | 25 | 1 |
| 67-1530 | Pin - Clevis | 2 | 8 | 1 | 233-22 | Knob | 7 | 47 | 1 |
| 67-1590 | Bracket - Brake Return | 1 | 6 | 1 | 233-25 | Knob | 5 | 35 | 1 |
| 67-1600-01 | Bracket - Deflector | 12 | 39 | 1 | 233-48 | Knob | 7 | 55 | 1 |
| 67-9170 | Spring | 6 | 31 | 1 | 2412-98 | Clamp - Hose | 3 | 11 | 5 |
| 68-3650 | Decal - Warning | 12 | 46 | 1 | 256-90 | Bushing | 6 | 5 | 2 |
| 68-8370 | Link - Deck Engage | 6 | 4 | 1 | 256-155 | Bushing | 6 | 28 | 1 |
| 68-8380 | Spacer - Stop, Deck | 2 | 17 | 2 | 2710-11 | Link - Connecting | 10 | 9 | 1 |
| 68-9950 | Spring - Traction | 6 | 15 | 1 | 282-27 | Clevis | 2 | 7 | 1 |
| 71-8310 | Spring - Prop, Seat | 5 | 1 | 1 | 282-27 | Clevis | 7 | 71 | 1 |
| 76-1580-03 | Guide - Chain | 10 | 17 | 2 | 283-67 | Pin - Clevis | 6 | 33 | 1 |
| 76-3820 | Anchor - Guide, Belt | 7 | 75 | 2 | 288-2 | Cap - Pipe | 8 | 29 | 1 |
| 76-3920 | Decal - H.O.C./Deck | 5 | 24 | 1 | 289-34 | Nipple - Pipe | 8 | 30 | 1 |
| 76-3940-03 | Lever W.A. - Shift | 7 | 54 | 1 | 2811-17 | Elbow - Street | 8 | 31 | 1 |
| 76-3970 | Spacer - Pivot | 7 | 69 | 1 | 2812-1 | Reducer | 8 | 32 | 1 |
| 76-4010 | Sprocket | 10 | 18 | 1 | 302-5 | Fitting - Grease | 4 | 4 | 4 |
| 76-4070 | Decal - Danger | 12 | 42 | 1 | 321-4 | Screw - Cap Hex. Hd. | 10 | 8 | 4 |
| 76-4080 | Decal | 2 | 36 | 1 | 321-4 | Screw - Cap Hex. Hd. | 8 | 9 | 2 |
| 76-4090-01 | Plate - Engine | 6 | 13 | 1 | 321-4 | Screw - Cap Hex. Hd. | 6 | 17 | 2 |
| 76-4660 | Spring | 7 | 76 | 1 | 321-4 | Screw - Cap Hex. Hd. | 12 | 48 | 1 |
| 80-2600 | Battery 12V | 8 | 8 | 1 | 321-5 | Screw - Cap Hex. Hd. | 12 | 38 | 8 |
| 80-4330 | Prop - Seat | 5 | 32 | 1 | 321-8 | Screw - Cap Hex. Hd. | 7 | 59 | 1 |
| 80-4340 | Shaft - Spindle | 12 | 27 | 1 | 321-15 | Screw - Cap Hex. Hd. | 7 | 56 | 1 |
| 80-4360 | Shield - Bearing | 12 | 26 | 1 | 322-3 | Screw - Cap Hex. Hd. | 2 | 1 | 6 |
| 80-4380 | Spacer - Spindle | 12 | 31 | 1 | 322-3 | Screw - Cap Hex. Hd. | 5 | 9 | 6 |
| 80-4450 | Cover - Recycler | 12 | 35 | 1 | 322-3 | Screw - Cap Hex. Hd. | 3 | 14 | 4 |
| 80-4460 | Pulley - Deck | 12 | 8 | 1 | 322-3 | Screw - Cap Hex. Hd. | 12 | 20 | 6 |
| 80-4510 | Kicker | 12 | 36 | 4 | 322-3 | Screw - Cap Hex. Hd. | 6 | 34 | 13 |
| 80-4520 | Guide - Belt | 12 | 12 | 1 | 322-5 | Screw - Cap Hex. Hd. | 5 | 7 | 2 |
| 80-4530 | Blade | 12 | 30 | 1 | 322-6 | Screw - Cap Hex. Hd. | 6 | 11 | 2 |
| 80-4540-03 | Ring - Deck, Recycler | 12 | 45 | 4 | 322-6 | Screw - Cap Hex. Hd. | 12 | 15 | 2 |
| 80-4550 | Rod - Base, Seat | 5 | 33 | 1 | 322-7 | Screw - Cap Hex. Hd. | 8 | 19 | 3 |
| 80-4560 | Spacer | 8 | 11 | 1 | 322-10 | Screw - Cap Hex. Hd. | 8 | 21 | 1 |
| 80-4580 | Tank - Gas | 3 | 7 | 1 | 322-10 | Screw - Cap Hex. Hd. | 6 | 37 | 1 |
| 82-6450 | Pulley - Transmission | 6 | 40 | 1 | 322-12 | Screw - Cap Hex. Hd. | 8 | 12 | 1 |
| 83-4840 | Pulley - Engine | 8 | 14 | 1 | 322-14 | Screw - Cap Hex. Hd. | 2 | 23 | 2 |
| 83-6610 | Tab - Hold Down | 12 | 47 | 1 | 322-22 | Screw - Cap Hex. Hd. | 11 | 6 | 4 |
| 88-4330 | Seat | 3 | 1 | 1 | 322-22 | Screw - Cap Hex. Hd. | 12 | 7 | 1 |
| 88-9810-03 | Gate - Shift | 7 | 50 | 1 | 323-8 | Screw - Cap Hex. Hd. | 6 | 26 | 1 |
| 88-9830 | Switch - Ignition | 5 | 36 | 1 | 323-9 | Screw - Cap Hex. Hd. | 6 | 24 | 1 |
| 88-9930 | Switch - Micro | 7 | 63 | 1 | 323-10 | Screw - Cap Hex. Hd. | 2 | 16 | 2 |
| 88-9931 | Switch - Micro | 5 | 27 | 1 | 329-4 | Screw - Cap Hex. Hd. | 7 | 53 | 1 |
| 92-7978 | Decal - Horsehead | 3 | 18 | 1 | 3218-1 | Nut - Jam | 5 | 16 | 2 |
| 92-7979 | Decal - Toro L.H. | 5 | 12 | 1 | 3218-2 | Nut - Jam | 7 | 72 | 1 |
| 92-7980 | Decal - Toro R.H. | 5 | * | 1 | 3219-6 | Nut - Hex. | 12 | 9 | 1 |
| 92-7981 | Decal - Toro | 1 | 21 | 1 | 3230-2 | Bolt - Carriage | 7 | 73 | 1 |
| 92-7990 | Insert - Wheel, Steering | 2 | 35 | 1 | 3230-3 | Bolt - Carriage | 5 | 3 | 2 |
| 92-9522 | Decal - Recycler | 12 | 44 | 1 | 3230-20 | Bolt - Carriage | 5 | 11 | 6 |
| 92-9845 | Solenoid | 5 | 31 | 1 | 3230-20 | Bolt - Carriage | 3 | 16 | 4 |
| 93-3190 | Boot - Terminal | 5 | 47 | 1 | 3231-4 | Bolt - Carriage | 10 | 3 | 2 |
| 93-6668 | Decal - Battery Charging | 8 | 38 | 1 | 3231-25 | Bolt - Carriage | 10 | 6 | 4 |
| 93-7276 | Decal - Danger | 8 | 37 | 1 | 3234-21 | Screw - Cap Hex. Hd. | 12 | 34 | 1 |
| 93-7444 | Harness - Wire | 9 | 1 | 1 | 3253-3 | Washer - Lock | 5 | 15 | 2 |
| 93-9354 | Decal - Battery | 8 | 36 | 1 | 3253-3 | Washer - Lock | 7 | 60 | 1 |
| 93-9499 | Decal - Instruction | 1 | 1 | 1 | 3253-4 | Washer - Lock | 6 | 36 | 1 |
| 217-80 | Rim | 4 | 5 | 2 | 3254-5 | Washer - Lock, Int. Tooth | 5 | 37 | 1 |
| 218-461 | Nut - Hex. | 5 | 38 | 1 | 3255-8 | Washer - Lock | 8 | 28 | 3 |
| 218-560 | Cap - Battery | 8 | 33 | 6 | 3256-14 | Washer - Flat | 5 | 45 | 1 |
| 231-115 | Tire | 10 | 1 | 2 | 3256-22 | Washer - Flat | 5 | 4 | 1 |

*Not Illustrated

TORO PART NUMBER INDEX (Cont.)

3319-276

| Part No. | Description | Pg. Ref. | | | Part No. | Description | Pg. Ref. | | |
|----------|-----------------------|----------|-----|------|-----------|--------------------------|----------|-----|------|
| | | No. | No. | Qty. | | | No. | No. | Qty. |
| 3256-22 | Washer - Flat | 7 | 61 | 3 | 3296-29 | Nut - Lock | 3 | 12 | 4 |
| 3256-23 | Washer - Flat | 8 | 3 | 2 | 3296-29 | Nut - Lock | 10 | 19 | 6 |
| 3256-23 | Washer - Flat | 5 | 6 | 4 | 3296-29 | Nut - Lock | 12 | 24 | 9 |
| 3256-23 | Washer - Flat | 6 | 9 | 3 | 3296-29 | Nut - Lock | 8 | 24 | 4 |
| 3256-23 | Washer - Flat | 3 | 15 | 8 | 3296-39 | Nut - Lock | 6 | 1 | 1 |
| 3256-23 | Washer - Lock | 12 | 6 | 3 | 3296-39 | Nut - Lock | 2 | 12 | 5 |
| 3256-24 | Washer - Flat | 10 | 16 | 6 | 3296-39 | Nut - Lock | 10 | 15 | 6 |
| 3256-24 | Washer - Flat | 6 | 22 | 3 | 3296-39 | Nut - Lock | 12 | 17 | 2 |
| 3256-25 | Washer - Flat | 8 | 15 | 1 | 3296-39 | Nut - Lock | 5 | 20 | 1 |
| 3256-26 | Washer - Flat | 4 | 13 | 1 | 3296-42 | Nut - Lock | 10 | 5 | 1 |
| 3256-29 | Washer - Flat | 2 | 21 | 2 | 3296-42 | Nut - Lock | 6 | 20 | 5 |
| 3256-55 | Washer - Fender | 7 | 48 | 2 | 3296-42 | Nut - Lock | 5 | 30 | 2 |
| 3257-23 | Key | 6 | 41 | 1 | 3296-42 | Nut - Lock | 12 | 41 | 9 |
| 3272-4 | Pin - Cotter | 5 | 43 | 1 | 3296-59 | Nut - Lock | 6 | 23 | 2 |
| 3272-4 | Pin - Cotter | 6 | 32 | 1 | 3296-59 | Nut - Lock | 12 | 40 | 1 |
| 3272-6 | Pin - Cotter | 6 | 2 | 2 | 32103-12 | Nut - Wing | 8 | 4 | 1 |
| 3272-6 | Pin - Cotter | 2 | 9 | 2 | 32103-22 | Nut - Wing | 8 | 10 | 2 |
| 3272-12 | Pin - Cotter | 4 | 18 | 2 | 32104-110 | Screw - Cap Hex. Hd. | 1 | 4 | 4 |
| 3272-23 | Pin - Cotter | 2 | 20 | 2 | 32109-14 | Nut - Wing | 12 | 33 | 1 |
| 3290-134 | Screw - Cap Mach. Hd. | 5 | 46 | 1 | 32120-64 | Ring - Retaining | 6 | 38 | 1 |
| 3290-250 | Pin - Hair, Cotter | 2 | 22 | 1 | 32121-32 | Pin - Roll | 2 | 31 | 1 |
| 3290-250 | Pin - Hair, Cotter | 1 | 16 | 2 | 32121-78 | Pin - Roll | 2 | 33 | 1 |
| 3290-347 | Nut - U-Type | 1 | 5 | 4 | 32144-14 | Screw - Self Tapping | 8 | 18 | 1 |
| 3290-354 | Nut - Double | 5 | 28 | 1 | 32144-14 | Screw - Wash. Hd., Tap. | 7 | 51 | 4 |
| 3290-354 | Nut - Double | 7 | 74 | 1 | 32144-42 | Screw - Hex. Hd. Tapping | 5 | 41 | 4 |
| 3290-355 | Pin - Hair, Cotter | 2 | 14 | 2 | 32144-49 | Screw - Tapping | 6 | 12 | 1 |
| 3290-378 | Tie - Cable | 3 | 13 | 1 | 32144-70 | Screw - Hex. Hd. Tapping | 6 | 44 | 1 |
| 3290-413 | Washer - Belleville | 5 | 19 | 7 | 32144-111 | Screw - Special | 12 | 43 | 8 |
| 3290-413 | Washer - Belleville | 2 | 28 | 4 | 32151-48 | Ring - Retaining | 4 | 6 | 2 |
| 3290-456 | Washer - Belleville | 7 | 68 | 2 | 32151-62 | Ring - Retaining | 7 | 67 | 1 |
| 3290-465 | Washer - Belleville | 12 | 29 | 1 | 32152-1 | Nut - Lock | 11 | 2 | 4 |
| 3290-478 | Washer - Belleville | 7 | 64 | 2 | 32153-3 | Nut - Lock | 8 | 35 | 1 |
| 3296-2 | Nut - Lock | 5 | 44 | 1 | | | | | |
| 3296-4 | Nut - Lock | 4 | 8 | 4 | | | | | |
| 3296-8 | Nut - Lock | 12 | 5 | 2 | | | | | |
| 3296-8 | Nut - Lock | 10 | 24 | 4 | | | | | |
| 3296-25 | Nut - Lock | 4 | 14 | 1 | | | | | |
| 3296-29 | Nut - Lock | 1 | 2 | 5 | | | | | |
| 3296-29 | Nut - Lock | 5 | 2 | 13 | | | | | |
| 3296-29 | Nut - Lock | 2 | 4 | 16 | | | | | |
| 3296-29 | Nut - Lock | 6 | 7 | 13 | | | | | |

OPTIONAL EQUIPMENT

- Easy Empty Bagging Kit Model No. 79090
- Twin Bag Bagger Kit Model No. 79080
- Tire Chains Part No. 11-0410
- Hi-Sail Blade Part No. 67-0200

*Not Illustrated

