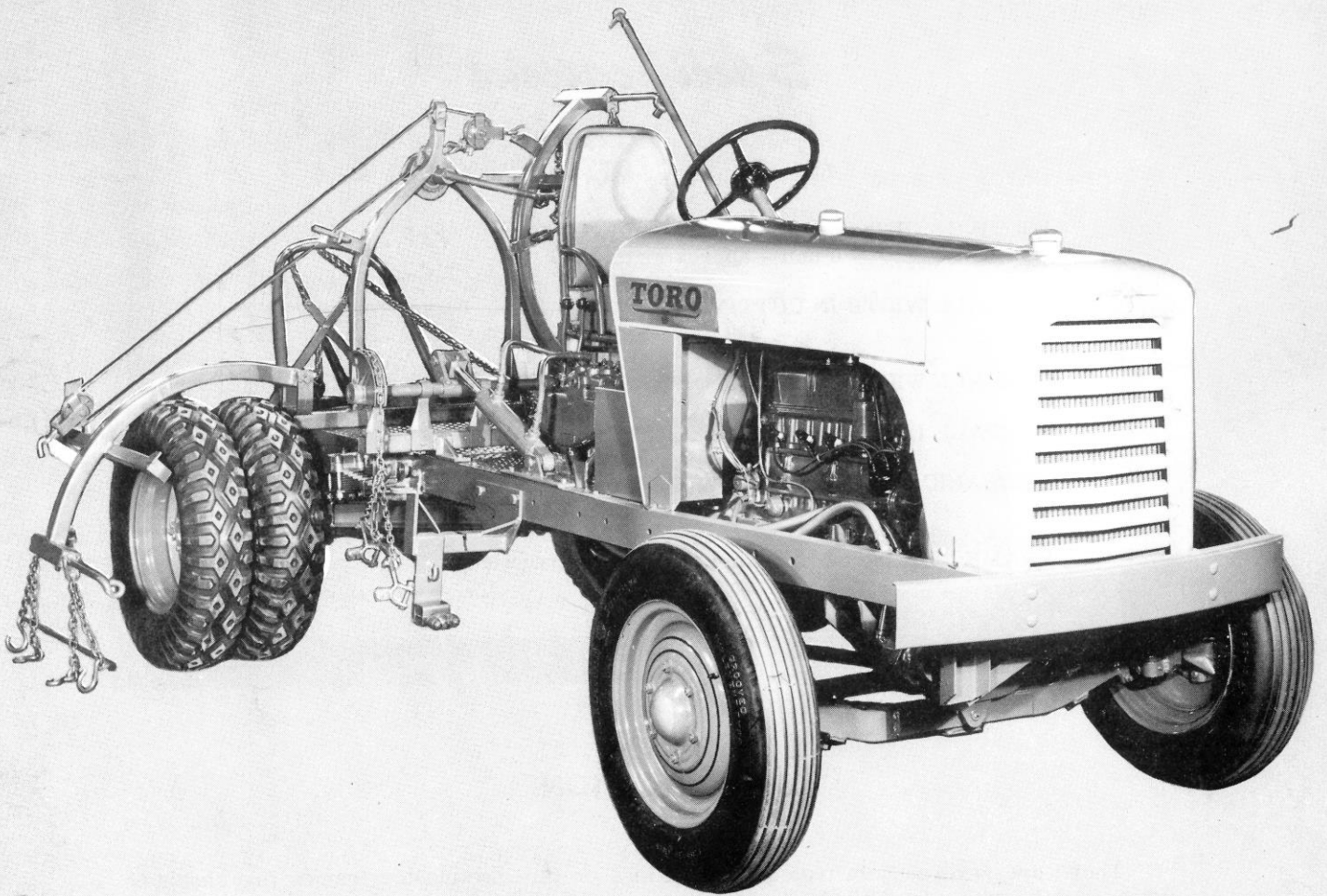


TORO

OWNER'S OPERATING AND PARTS MANUAL



TORO—PARKMASTER FRAME



To The Toro Owner

This manual has been especially prepared for your information on the various Parkmaster frame units. This manual covers the 3 unit Parkmaster, both hydraulic and manual type, the 3 unit hydraulic Park General and the 5 unit (Xmas tree) Parkmaster which has 3 units controlled hydraulically and 2 units manually.

The Parkmaster frames are manufactured by an organization of mowing machinery specialists. Each frame is carefully inspected and tested before leaving the factory and will give many years of reliable service when properly operated and maintained.

Specifications

UNITS: 3 and 5

WIDTH OF CUT: 3 unit - approximately 5' 8"
5 unit - approximately 10'

OVERALL WIDTH IN CUTTING POSITION: 3 unit - approximately 7' 2"
5 unit - approximately 12' 4"

OVERALL WIDTH IN TRANSPORTING POSITION: approximately 7' 2"

OVERALL LENGTH OF FRAME AND TRACTOR: 14' 6"

MECHANICAL LIFT FOR MOWERS WHEN TRANSPORTING
(HYDRAULIC LIFT FOR 3 UNIT)

FRAME: Square tubular steel, welded construction

LUBRICATION

There are several Zerk type grease fittings on the Parkmaster frames that should be greased daily with a good grade of gun grease.

For servicing the hydraulic unit, we recommend Mobiloil D. T. E. Light Oil or any high quality hydraulic oil. Check periodically to see that oil level is properly maintained. Drain and refill with fresh oil annually.

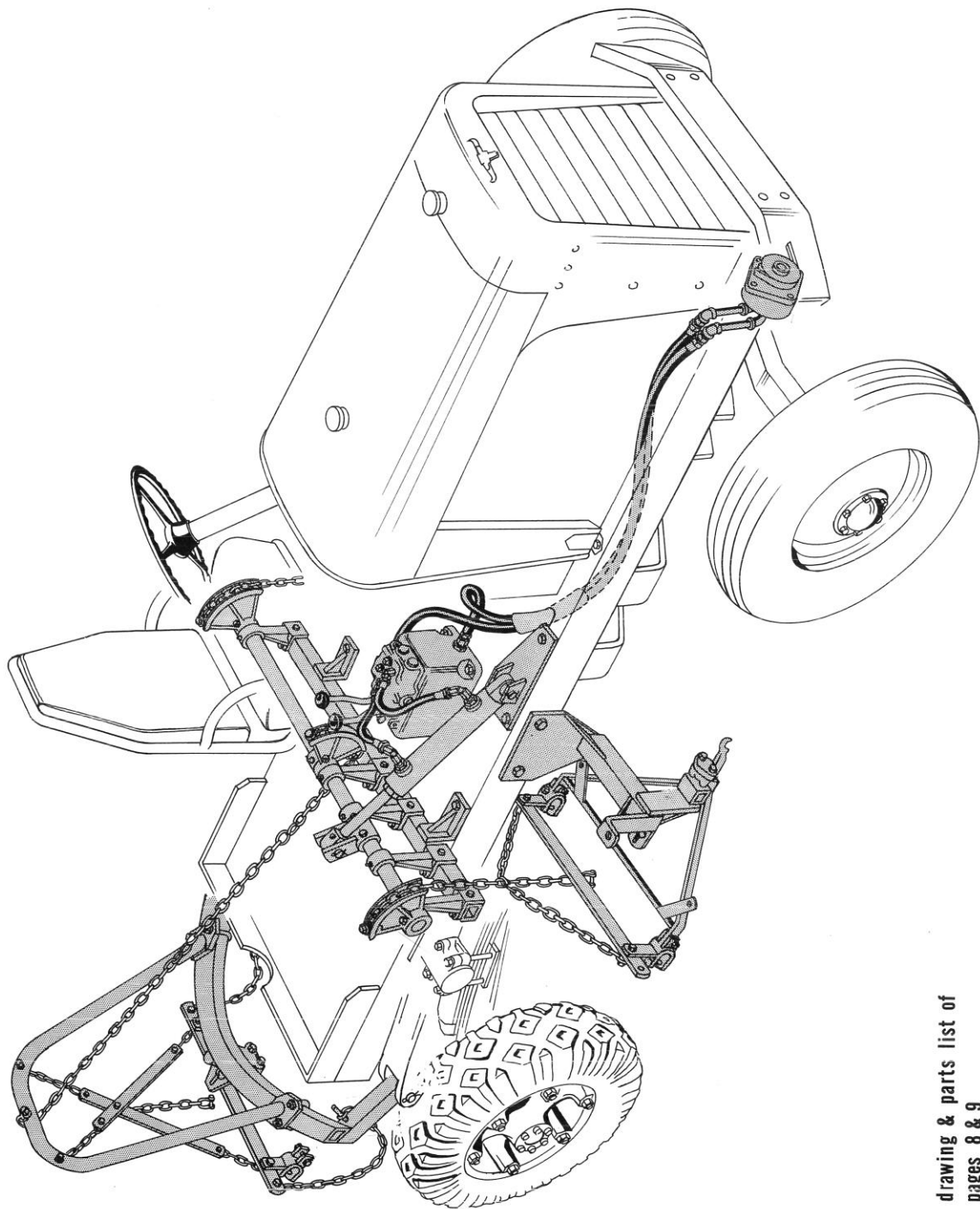
See your Tractor and Spartan Owner's Manual for lubrication of these units.

PARKMASTER FRAMES

INDEX

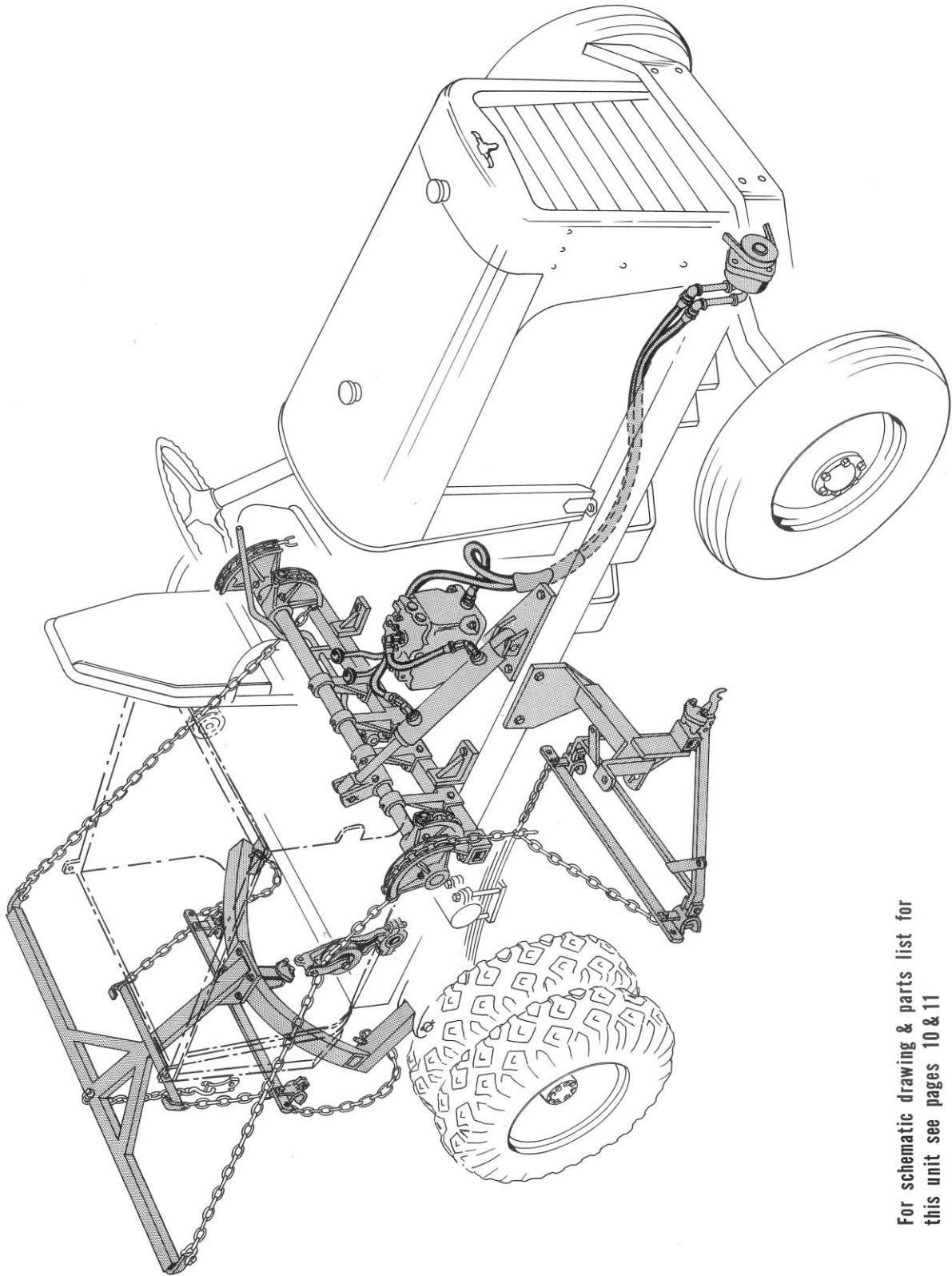
3 UNIT HYDRAULIC (HLK - 442)	
Assembly Illustration	Page 4
Schematic Drawing and Parts List	Pages 8 & 9
 PARK GENERAL (FK - 35)	
Assembly Illustration	Page 5
Schematic Drawing and Parts List	Pages 10 & 11
 5 UNIT (XMAS TREE)	
Assembly Illustration	Page 6
Schematic Drawing and Parts List	Pages 12 & 13
 3 UNIT MANUAL LIFT	
Schematic Drawing and Parts List	Page 7
 CONVERSION KIT (FK - 135) 3 to 5 UNIT	Pages 12 & 13
 TRANSPORTING AND CUTTING POSITION	
5 Unit PARKMASTER	Pages 19 & 20
 HYDRAULIC PARTS BREAKDOWN	Pages 14 thru 18

3 Unit Hydraulic
Parkmaster



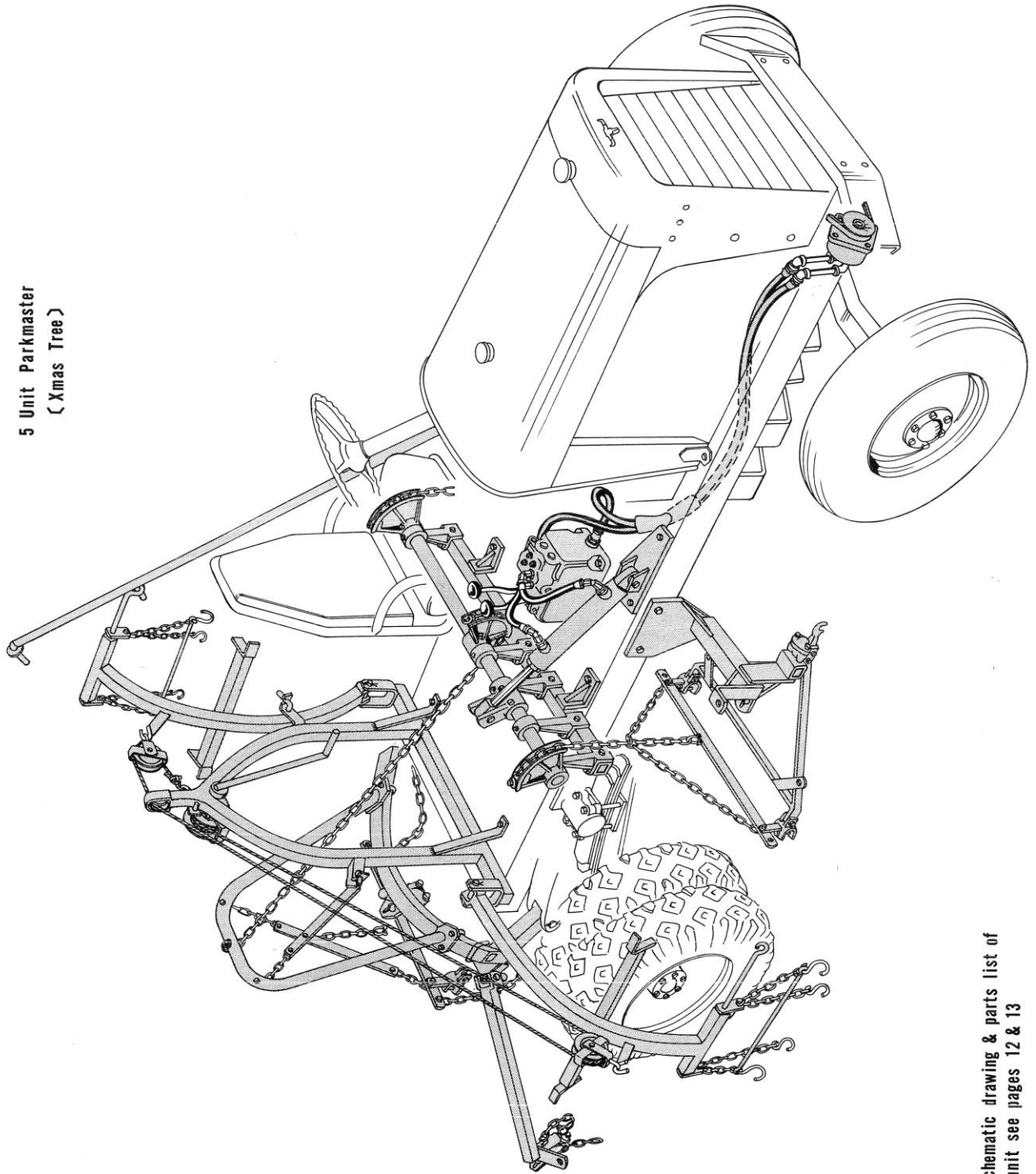
For schematic drawing & parts list of
this unit see pages 8 & 9

3 Unit Hydraulic
Park General

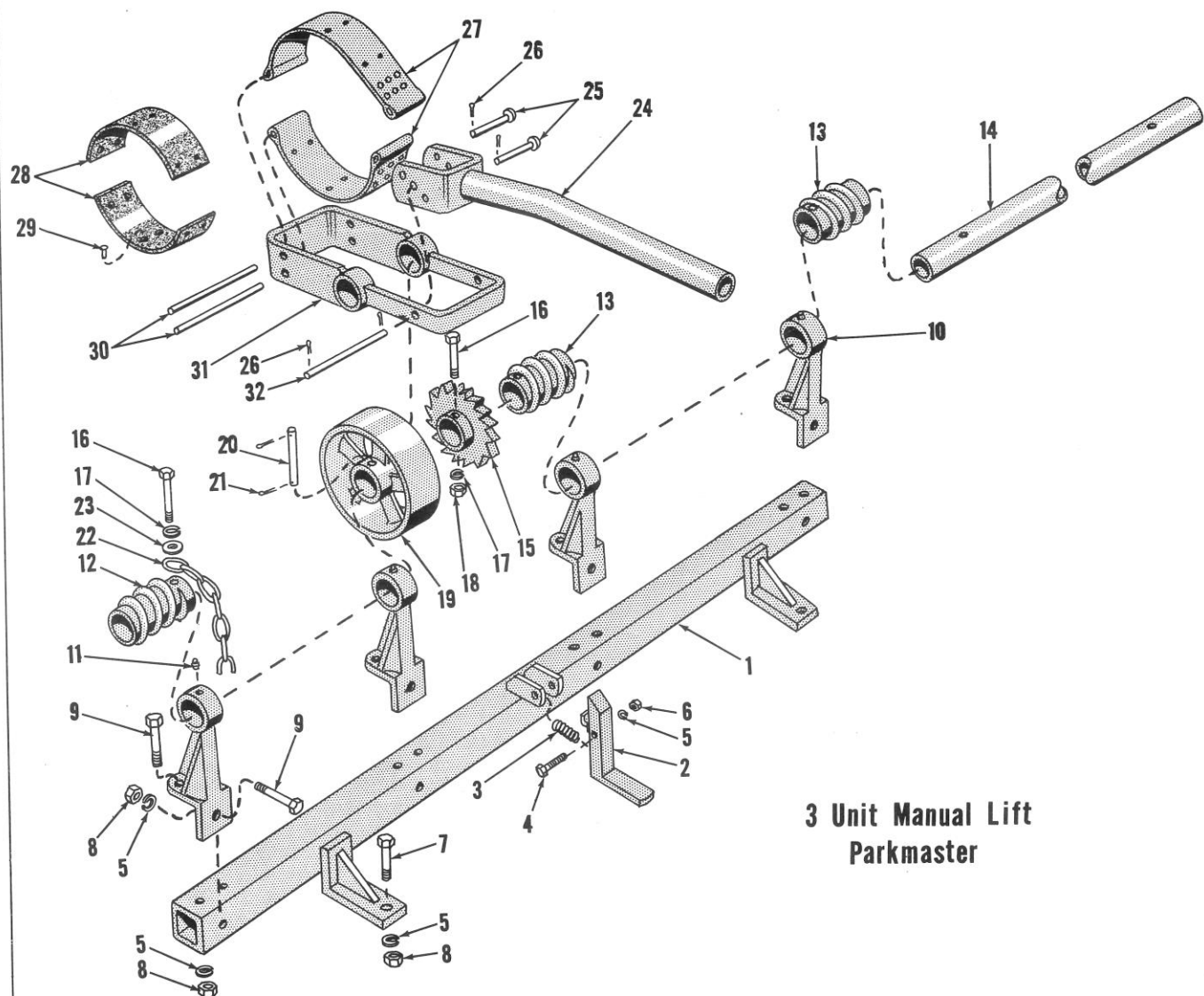


For schematic drawing & parts list for
this unit see pages 10 & 11

5 Unit Parkmaster
(Xmas Tree)



For schematic drawing & parts list of
this unit see pages 12 & 13



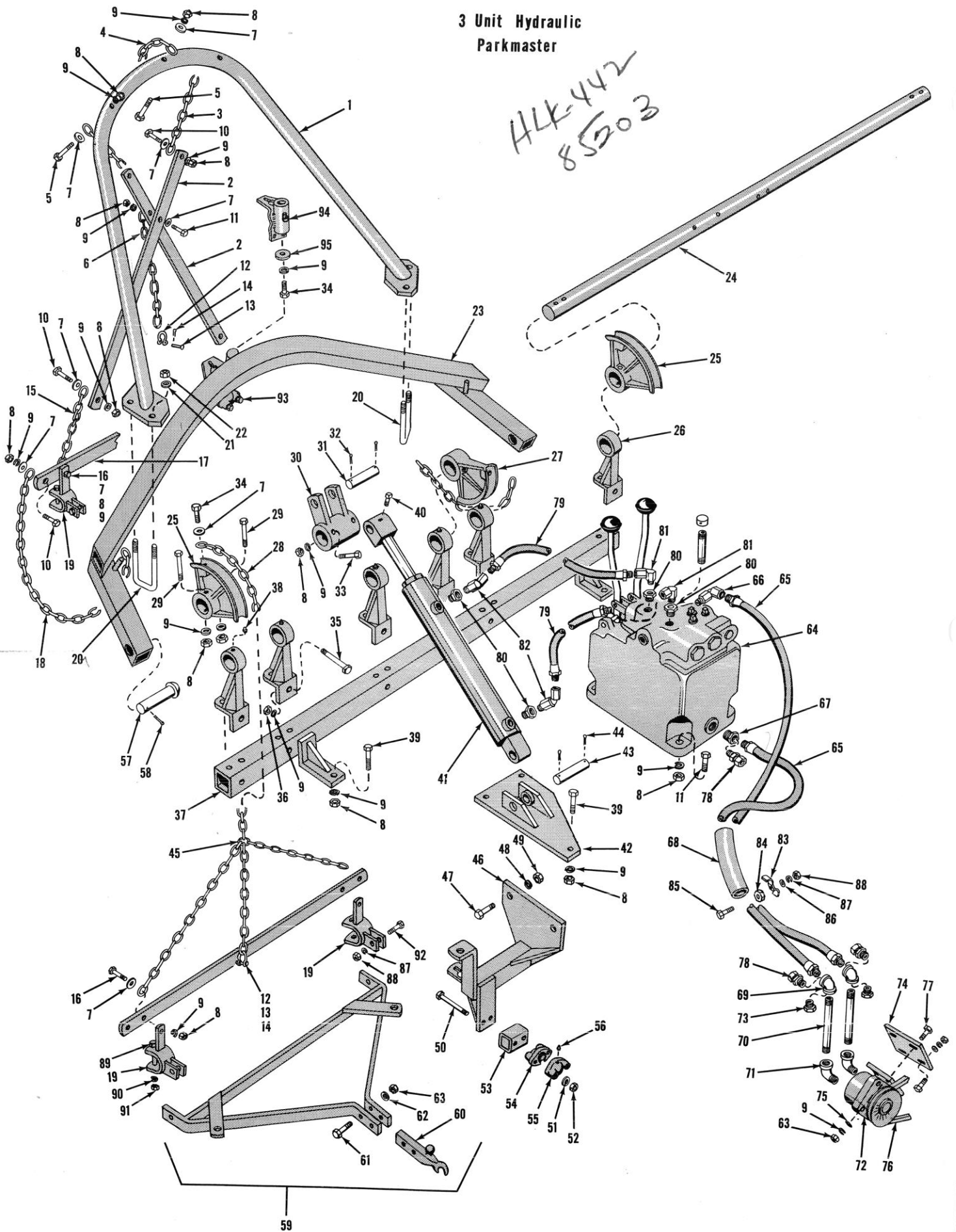
**3 Unit Manual Lift
Parkmaster**

Ref. No.	Part No.	Description	No. Used
1	JT351B	Lift Shaft Base	1
2	JT384B	Treadle Latch	1
3	TG-280	Spring	1
4	323-11	Screw, 3/8" x 2 1/4" N. C.	1
5	3253-5	Lockwasher, 3/8" Reg.	17
6	3217-7	Nut, 3/8" N. C. Full	1
7	3211-5	Screw, 3/8" N. F. x 1 1/4"	4
8	3219-3	Nut, 3/8" N. F. Full	16
9	3211-13	Screw, 3/8" N. F. x 3"	12
10	JT-434	Bearing	4
11	302-5	Grease Fitting	4
12	JT-389R	Chain Guide, Right	1
13	JT-389L	Chain Guide, Left	2
14	JT-381	Shaft, Mower Lift	1
15	LM-23	Ratchet Wheel	1
16	322-12	Screw, 5/16" N. C. x 2 1/2"	4

Ref. No.	Part No.	Description	No. Used
17	3253-4	Lockwasher, 5/16" Reg.	4
18	3217-6	Nut, 5/16" N. C. Full	1
19	JT-380	Brake Drum, Mower Lift	1
20	JT-304	Pin, Brake Drum	1
21	3272-31	Cotter Pin, 5/32 x 3/4	2
22	JT-407A	Chain Assembly	2
23	3256-3	Washer, 5/16" cut	3
24	JT-385A	Brake Lever, Mower Lift	1
25	JT-391	Pin, Anchor	2
26	3272-10	Cotter Pin, 1/8" x 3/4	3
27	AJT-386	Brake Band Assy.	2
28	JT-387	Lining, Brake Band	2
29	3295-1	Rivet, Brake Lining	12
30	JT-390	Pin	2
31	JT-388	Brake Anchor, Mower Lift	1
32	JT-392	Pin, Pivot	1

3 Unit Hydraulic Parkmaster

HLK-442
85203



Ref. No.	Part No.	Description	No. Used
1	JT-361-B	Lift Arm, Rear Mower	1
2	JT-383-B	Bar, Rear Lift	2
3	JT-306	Lift Chain, Upper, 8 Links	2
4	JT-305	Hoist Chain, Rear Mower, 7 Ft.	1
5	323-10	Screw, 3/8 N.C. x 2	3
6	JT-308	Chain, Center Lift, 17 Links	1
7	3256-4	Washer, 3/8" cut	19
8	3217-7	Nut, 3/8" N.C. Full	39
9	3253-5	Lockwasher, 3/8"	56
10	323-6	Screw, 3/8" N.C. x 1"	6
11	323-7	Screw, 3/8" N.C. x 1 1/4	5
12	282-4	Shackle	3
13	283-6	Pin	3
14	3272-10	Cotter Pin	3
15	JT-307	Lift Chain, Lower, 5 Links	2
16	323-8	Screw, 3/8" N.C. x 1 1/2	6
17	JT-354C	Lift Bail	3
18	JT-5	Sway Chain	2
19	JT-352A	Drawbar Clamp	6
20	JT-405	U-Bolt	2
21	3253-7	Lockwasher, 1/2"	4
22	3217-9	Nut, 1/2" N.C. Full	4
23	JT-360F	Rear Draft Frame	1
24	HL-12	Lift Shaft	1
25	HL-14	Side Sector	2
26	JT-434	Bearing, Lift Shaft	6
27	HL-13	Center Sector	1
28	JT-407A	Lift Chain Assembly	2
29	323-13	Screw, 3/8" N.C. x 2 3/4	6
30	HL-11	Lift Arm	1
31	HL-15	Pin	1
32	3272-18	Cotter Pin	2
33	323-12	Screw, 3/8" N.C. x 2 1/2	2
34	3211-4	Screw, 3/8" N.F. x 1	4
35	3211-12	Screw, 3/8" N.F. x 2 3/4	18
36	3219-3	Nut, 3/8" N.F. Full	18
37	HL-17	Base, Mower Lift	1
38	302-4	Grease Fitting, 1/4" - 28 - 45°	6
39	323-8	Screw, 3/8" x 1 1/2" N.C.	7
40	3242-3	Setscrew, 3/8" x 5/8" N.C. SQ. HD.	1
41	353-3	Ram Assembly, Double Acting	1
42	HL-70	Bracket, Ram	1
43	HL-16	Pin, Ram Anchor	1
44	3272-18	Cotter Pin, 5/32 x 1 1/2"	2
45	JT-407A	Lift Chain, Front Mower	2
46	F-101-R	Front Mower Bracket, Right	1
*	F-101-L	Front Mower Bracket, Left	1
47	3214-4	Screw, 5/8" N.F. x 1 3/4"	4
48	3253-8	Lockwasher, 5/8"	4

*Not Illustrated

Important Ordering Instructions

To insure getting correct parts without delay, please furnish the following information:

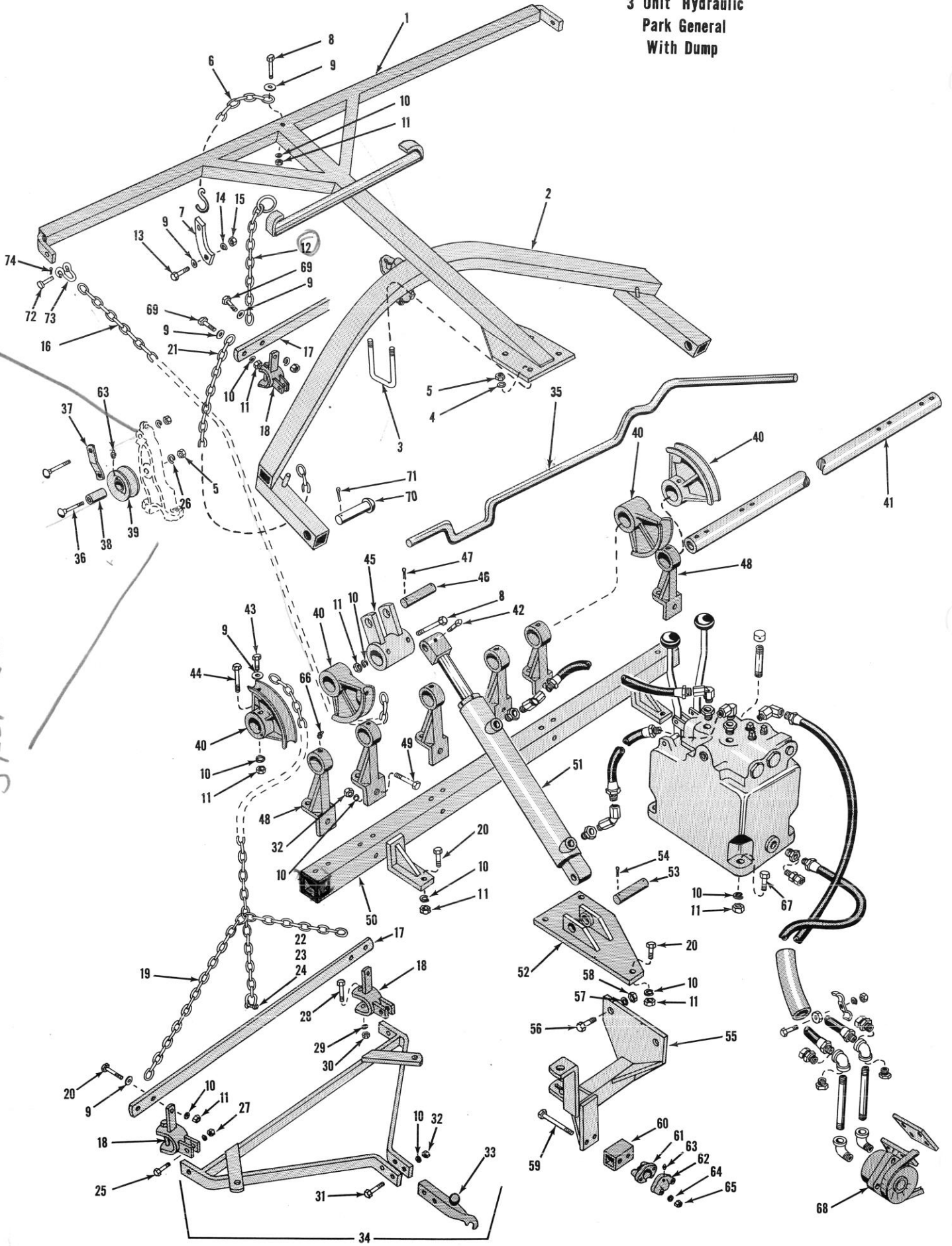
1. Serial number of your frame as shown on the name plate.
2. Part number, description and quantity of each part required.
3. State whether parts should be shipped by mail or

Ref. No.	Part No.	Description	No. Used
49	3219-6	Nut, 5/8" N.F. Full	4
50	324-17	Screw, 7/16" x 5" N.C.	4
51	3253-6	Lockwasher, 7/16" Reg.	6
52	3217-8	Nut, 7/16" N.C. Full	6
53	F-230	Spacer, Front Mower	2
54	JT-302A	Ball Socket	3
55	JT-302TA	Ball Socket, Tapped	3
56	302-5	Grease Fitting, 1/4"	3
57	JT-406	Pivot Pin, Rear Frame	2
58	3272-30	Cotter Pin, 1/4" x 1 1/2"	2
59	FK-20	Drawbar	3
60	LU56B	Ball Pivot	3
61	3211-8	Screw, 3/8" N.F. x 1 3/4"	6
62	3253-5	Lockwasher, 3/8"	6
63	3219-3	Nut, 3/8" N.F. Full	10
64	353-13	Tank & Valve Assy., Dbl. Acting	1
65	HL-68	Hose Assembly, Pump to Tank 67"	2
66	353-27	Adapter Union	1
67	2812-4	Pipe Bushing	1
68	HL-69	Sleeve	1
69	2813-9	Elbow	2
70	289-19	Pipe Nipple	2
71	2811-10	Street Ell	2
72	353-5	Hydraulic Pump	1
73	2812-2	Pipe Bushing	2
74	HL-71A	Bracket	1
75	3256-3	Washer, 5/16" cut	4
76	271-12	V-Belt	1
77	3211-5	Screw, 3/8" N.F. x 1 1/4"	4
78	353-26	Adapter Union	3
79	HL-60	Hose Assembly, Valve to Ram - 11 1/2"	2
80	2812-3	Pipe Bushing, 1/4" x 1/2"	4
81	353-28	Adapter Union, 90°	2
82	353-29	Adapter Union, 45°	2
83	HL-26	Hose Clamp	1
84	3219-6	Spacer Nut	1
85	3213-6	Screw, 1/2" N.F. x 2 1/4	1
86	3256-6	Washer, 1/2" cut	1
87	3253-7	Lockwasher, 1/2" Reg.	7
88	3219-5	Nut, 1/2" N.F. Full	7
89	3212-10	Screw, 7/16" N.F. x 2 1/2"	6
90	3253-6	Lockwasher, 7/16"	6
91	3219-4	Nut, 7/16" N.F. Full	6
92	3213-4	Screw, 1/2" N.F. x 1 3/4"	6
93	324-11	Screw, 7/16 N.C. x 2 3/4"	2
94	F-185	Swivel Brkt. W.A.	1
95	LU-323	Washer	1

express. All repair parts are shipped F.O.B. factory.

4. Name and address where parts are to be shipped.
5. Do not order by reference number; use part number only.
6. Repair parts are available from your Toro distributor or dealer.

3 Unit Hydraulic
Park General
With Dump



Ref. No.	Part No.	Description	No. Used
1	JT-426A	Lift Arm, Rear Mower	1
2	JT-360F	Rear Draft Frame	1
3	JT-405	"U" Bolt	2
4	3253-7	Lockwasher, $\frac{1}{2}$ "	4
5	3217-9	Nut, $\frac{1}{2}$ " N. C. Full	8
6	F-767	Hook & Chain Assy.	1
7	F-313	Lift Extension	1
8	323-12	Screw, $\frac{3}{8}$ " N. C. x $2\frac{1}{2}$ "	3
9	3256-4	Washer, $\frac{3}{8}$ " cut	13
10	3253-5	Lockwasher, $\frac{3}{8}$ "	46
11	3217-7	Nut, $\frac{3}{8}$ " N. C. Full	19
12	F-135B	Chain	2
13	324-5	Screw, $\frac{7}{16}$ " N. C. x $1\frac{1}{4}$ "	1
14	3253-6	Lockwasher, $\frac{7}{16}$ "	1
15	3217-8	Nut, $\frac{7}{16}$ " N. C. Full	1
16	F-132	Lift Chain, 80 Links	2
17	JT-354C	Lift Bail	3
18	JT-352A	Drawbar Clamp	6
19	JT-407A	Lift Chain, Front Mower	2
20	323-8	Screw, $\frac{3}{8}$ " N. C. x $1\frac{1}{2}$ "	13
21	JT-5	Sway Chain	2
22	282-4	Shackle	2
23	283-6	Pin	2
24	3272-10	Cotter Pin	2
25	3213-4	Screw, $\frac{1}{2}$ " N. F. x $1\frac{3}{4}$ "	6
26	3253-7	Lockwasher, $\frac{1}{2}$ "	10
27	3219-5	Nut, $\frac{1}{2}$ " N. F. Full	6
28	3212-10	Screw, $\frac{7}{16}$ " N. F. x $2\frac{1}{2}$ "	6
29	3253-6	Lockwasher, $\frac{7}{16}$ "	6
30	3219-4	Nut, $\frac{7}{16}$ " N. F. Full	6
31	3211-8	Screw, $\frac{3}{8}$ " N. F. x $1\frac{3}{4}$ "	6
32	3219-3	Nut, $\frac{3}{8}$ " N. F. Full	24
33	LU56B	Ball Pivot	3
34	FK-20	Drawbar	3
35	JT116A	Lock Lever	1
36	3233-7	Bolt, $\frac{1}{2}$ " x $4\frac{1}{2}$ " Carriage	4
37	F-134	Sheave Support	2
38	F-133	Sheave Bushing	2
39	PR-20	Pulley	2
40	HL-14	Side Sector	4

*Not Illustrated

Ref. No.	Part No.	Description	No. Used
41	HL-66	Lift Shaft	1
42	3243-3	Set Screw, $\frac{3}{8}$ " N. C. x $\frac{5}{8}$ " SQ. HD.	1
43	3211-4	Screw, $\frac{3}{8}$ " N. F. x 1"	3
44	323-13	Screw, $\frac{3}{8}$ " N. C. x $2\frac{3}{4}$ "	4
45	HL-11	Lift Arm	1
46	HL-15	Pin	1
47	3272-18	Cotter Pin	2
48	JT-434	Bearing, Lift Shaft	6
49	3211-12	Screw, $\frac{3}{8}$ " N. F. x $2\frac{3}{4}$ "	18
50	HL-17	Base, Lift Shaft	1
51	353-3	Ram Assembly, Double Acting	1
52	HL-70	Bracket, Ram	1
53	HL-16	Pin, Ram Anchor	1
54	3272-18	Cotter Pin, $\frac{5}{32}$ " x $1\frac{1}{2}$ "	2
55	F-101R	Front Mower Bracket, Right	1
	* F-101L	Front Mower Bracket, Left	1
56	3214-4	Screw, $\frac{5}{8}$ " N. F. x $1\frac{3}{4}$ "	4
57	3253-8	Lockwasher, $\frac{5}{8}$ "	4
58	3219-6	Nut, $\frac{5}{8}$ " N. F. Full	4
59	324-17	Screw, $\frac{7}{16}$ " x 5" N. C.	6
60	F-230	Spacer, Front Mower	2
61	JT-302A	Ball Socket	3
62	JT-302TA	Ball Socket, Tapped	3
63	302-5	Grease Fitting, $\frac{1}{4}$ " Straight	5
64	3253-6	Lockwasher, $\frac{7}{16}$ "	6
65	3217-8	Nut, $\frac{7}{16}$ " N. C. Full	6
66	302-4	Grease Fitting, $\frac{1}{4}$ " 45°	6
67	323-7	Screw, $\frac{3}{8}$ " N. C. x $1\frac{1}{4}$ "	4
68	271-12	V-Belt	1
69	323-6	Screw, $\frac{3}{8}$ " N. C. x 1"	2
70	JT-406	Pivot Pin	2
71	3272-30	Cotter Pin	2
72	TS-75	Pin	2
73	TS-74	Clevis	2
74	3272-11	Cotter Pin, $\frac{1}{8}$ x 1	2

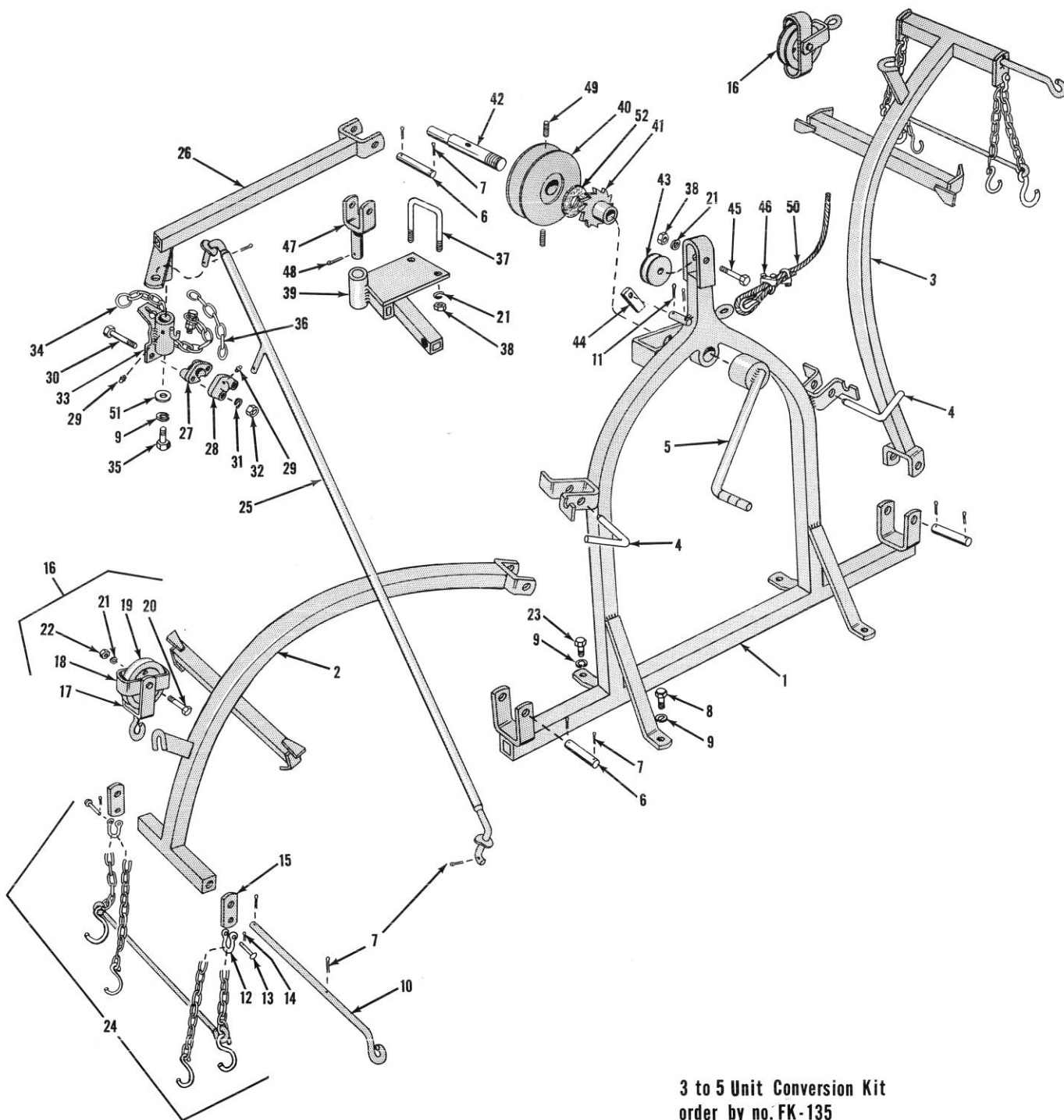
NOTE: For hydraulic parts on this unit see schematic drawing and Parts List for 3-Unit Hydraulic Parkmaster on pages 8 & 9, as they are identical.

Warranty

Every piece of equipment is in perfect working condition before leaving the factory and will, when properly operated, perform the work for which it has been recommended.

Should any parts, within three months from date of purchase, prove defective, new parts will be furnished, free of charge, f. o. b. factory, if the broken parts are returned to us for inspection.

We reserve the right to make improvements and changes in the machine in this manual without notice.

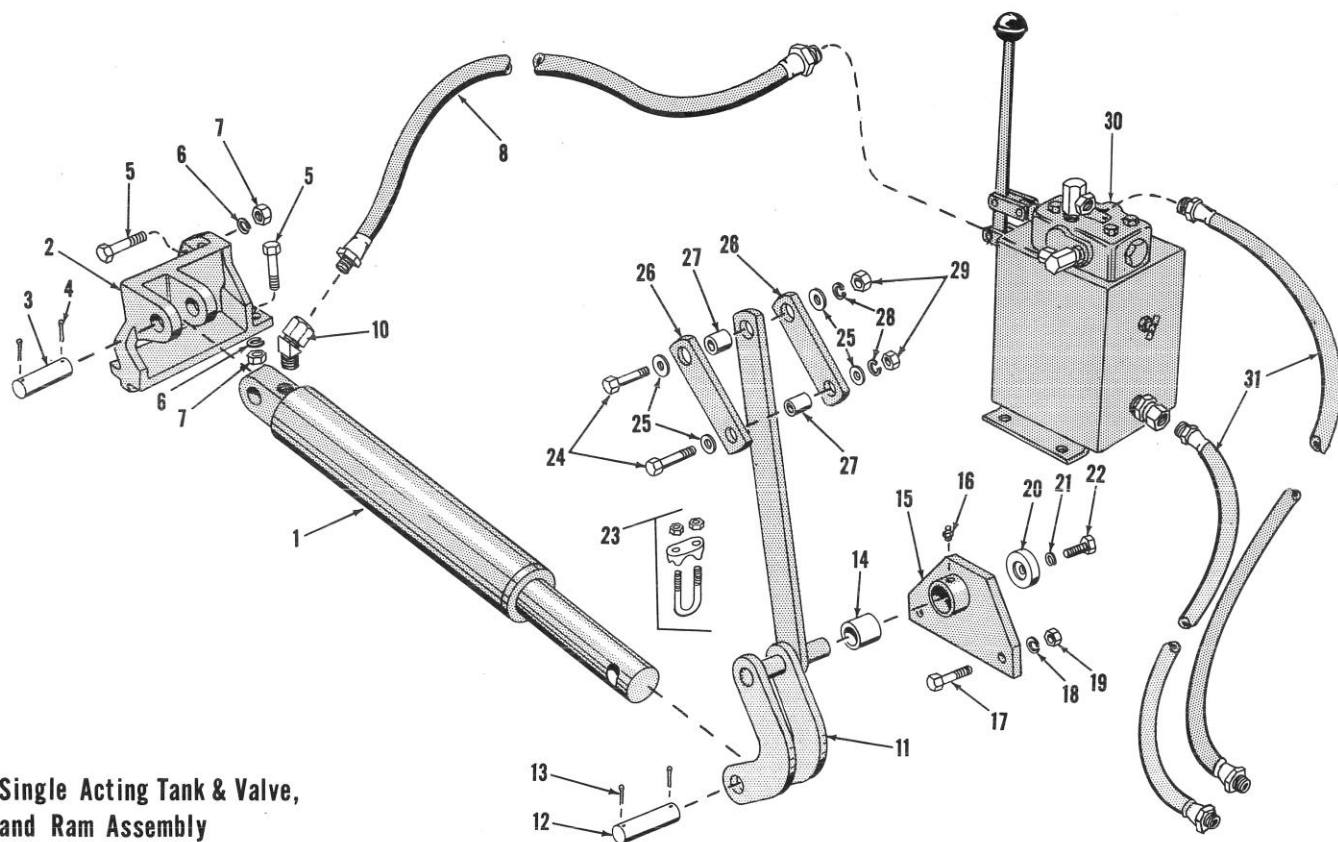


3 to 5 Unit Conversion Kit
 order by no. FK-135
 Xmas Tree

Ref. No.	Part No.	Description	No. Used
1	MG-600B	Hoist Frame	1
2	MG-601BR	Hoist Arm, Right	1
3	MG-601BL	Hoist Arm, Left	1
4	MG-603	Lock Pin, Hoist Arm	2
5	JT-991	Crank, Hoist	1
6	LU-310	Pin	4
7	3272-30	Cotter Pin, $\frac{1}{4}$ x $1\frac{1}{2}$	14
8	323-7	Screw, $\frac{3}{8}$ " x $1\frac{1}{2}$ " N. F.	4
9	3253-5	Lockwasher, $\frac{3}{8}$ "	6
10	MG-606B	Pivot, Mower Hanger	2
11	3272-12	Cotter Pin, $\frac{1}{8}$ " x $1\frac{1}{4}$ "	1
12	282-4	Shackle	4
13	283-6	Yoke Pin	4
14	3272-10	Cotter Pin, $\frac{1}{8}$ " x $\frac{3}{4}$ "	4
15	MG-654-7	Bracket	4
16	AMG-610	Cable Sheave Assembly	2
17	MG-610	Fork, Cable Sheave	2
18	MG-611	Guide, Cable Sheave	2
19	243-1	Cable Sheave	2
20	325-9	Screw, $\frac{1}{2}$ " N. C. x $2\frac{1}{4}$ "	2
21	3253-7	Lockwasher, $\frac{1}{2}$ "	6
22	3218-5	Nut, $\frac{1}{2}$ " N. C. Jam	2
23	3211-5	Screw, $\frac{3}{8}$ " x $1\frac{1}{4}$ " N. F.	2
24	MG-654	Chain Assembly, Mower Lift	4
25	MG-620	Arm Rod, 5-Gang	2
26	JT-424R	Tow Arm, Right	1
*	JT-424L	Tow Arm, Left	1

*Not Illustrated

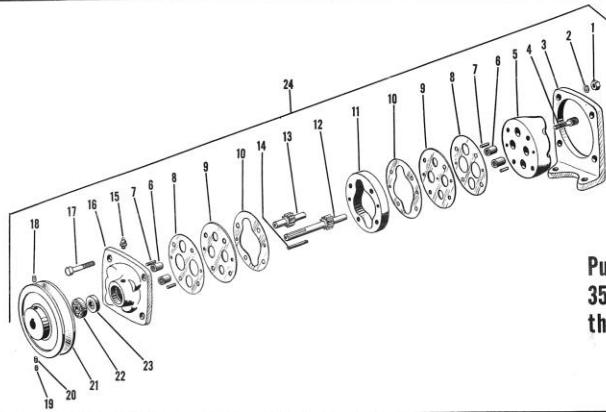
Ref. No.	Part No.	Description	No. Used
27	JT-302A	Ball Socket	2
28	JT-302TA	Ball Socket, Tapped	2
29	302-5	Grease Fitting	4
30	324-11	Screw, $\frac{7}{16}$ " N. C. x $2\frac{3}{4}$	4
31	3253-6	Lockwasher, $\frac{7}{16}$ "	4
32	3217-8	Nut, $\frac{7}{16}$ " N. C. Full	4
33	F-185	Swivel Bracket	2
34	F-135A	Chain	2
35	3211-4	Screw, $\frac{3}{8}$ " N. F. x 1"	2
36	F-140	Chain	2
37	JT-405	"U" Bolt	2
38	3217-9	Nut, $\frac{1}{2}$ " N. C. Full	5
39	MG618R	5 Gang Arm Anchor, Right	1
*	MG618L	5 Gang Arm Anchor, Left	1
40	JT-999	Hoist Drum	1
41	JT-998	Ratchet Wheel	1
42	JT-997	Drum Shaft	1
43	LM-210A	Cable Sheave	1
44	JT-994	Ratchet Dog	1
45	325-10	Screw, $\frac{1}{2}$ " x $2\frac{1}{2}$ " N. C.	1
46	298-2	Clip	2
47	F-250	Universal Joint	2
48	3272-30	Cotter Pin, $\frac{1}{4}$ x $1\frac{1}{2}$	2
49	3247-7	Screw, Set	2
50	MG-608	Hoist Cable Assembly	1
51	LU-323	Washer	2
52	JT-995	Drum Brake Lining	1



Single Acting Tank & Valve,
and Ram Assembly
use with sickle only

Ref. No.	Part No.	Description	No. Used
1	353-14	Ram Assembly, single acting	1
2	HL-27	Bracket, Ram	1
3	HL-32	Pin	1
4	3272-18	Cotter Pin	2
5	325-6	Screw, $\frac{1}{2}$ " N.C. x $1\frac{1}{2}$ "	4
6	3253-7	Lockwasher, $\frac{1}{2}$ " Reg.	4
7	3217-9	Nut, $\frac{1}{2}$ " N.C. Full	4
8	HL-38	Hose Assembly, 29 $\frac{1}{2}$ "	1
10	353-28	Adapter Union	1
11	TS655	Arm	1
12	HL-33	Pin	1
13	3272-12	Cotter Pin	2
14	PL-23	Bushing	1
15	HL-30	Bracket, Lift Arm	1
16	302-5	Grease Fitting	1

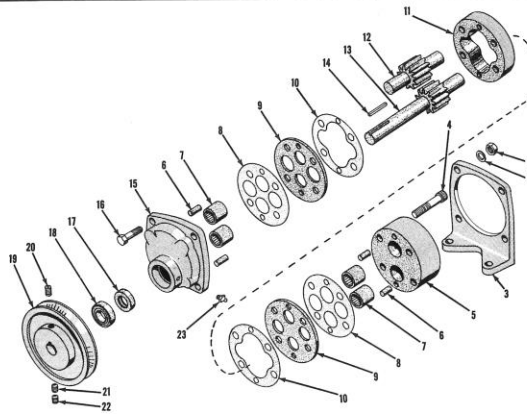
Ref. No.	Part No.	Description	No. Used
17	327-4	Screw, $\frac{5}{8}$ " N.C. x $1\frac{1}{2}$ "	2
18	3253-8	Lockwasher, $\frac{5}{8}$ " Reg.	2
19	3217-11	Nut, $\frac{5}{8}$ " N.C. Full	2
20	HL-34	End Plate	1
21	3253-7	Lockwasher, $\frac{1}{2}$ " Reg.	1
22	3213-1	Screw, $\frac{1}{2}$ " N.F. x 1"	1
23	298-4	Clamp Assembly, Cable	1
24	323-7	Screw, $\frac{3}{8}$ " N.C. x $1\frac{1}{4}$ "	2
25	3256-4	Washer, $\frac{3}{8}$ " cut	4
26	TS-653	Strap, Lift Arm	2
27	TS-654	Spacer	2
28	3253-5	Lockwasher, $\frac{3}{8}$ " Reg.	2
29	3217-7	Nut, $\frac{3}{8}$ " N.C. Full	2
30	HL-24	Valve Assembly	1
31	HL-68	Hose Assembly, 67"	2



**Pump Assembly
353-4 (PA-15) used on tractors
thru serial no. 4TB&C 222**

Ref. No.	Part No.	Description	No. Used	Ref. No.	Part No.	Description	No. Used
1	*A238X2	Nut	4	13	*6X1005X2	Driven Gear	1
2	*A252X8	Lockwasher	4	14	*A399X5	Square Key	1
3	*M2X138	Bracket, Foot Mount	1	15	*A281X1	Grease Fitting	1
4	*658X8	Capscrew	4	16	*2X10X1	Adaptor Cover	1
5	*3X10X1	Cover	1	17	*A112X6	Capscrew	4
6	*A340X12	Bearing	4	18	*A614X3	Setscrew	1
7	*A550X2	Dowel	4	19	*A702X4	Setscrew	1
8	*712X95B	Gasket	2	20	*A601X4	Setscrew	1
9	*12X10X1	Wear Plate	2	21	*M18X15A	Pulley	1
10	*712X96A	Gasket	2	22	*A331X4	Bearing	1
11	*1X1005X1	Housing	1	23	*A362X7	Seal Assembly	1
12	*6X1005X1	Drive Gear	1	24	353-4	Pump Assembly	1

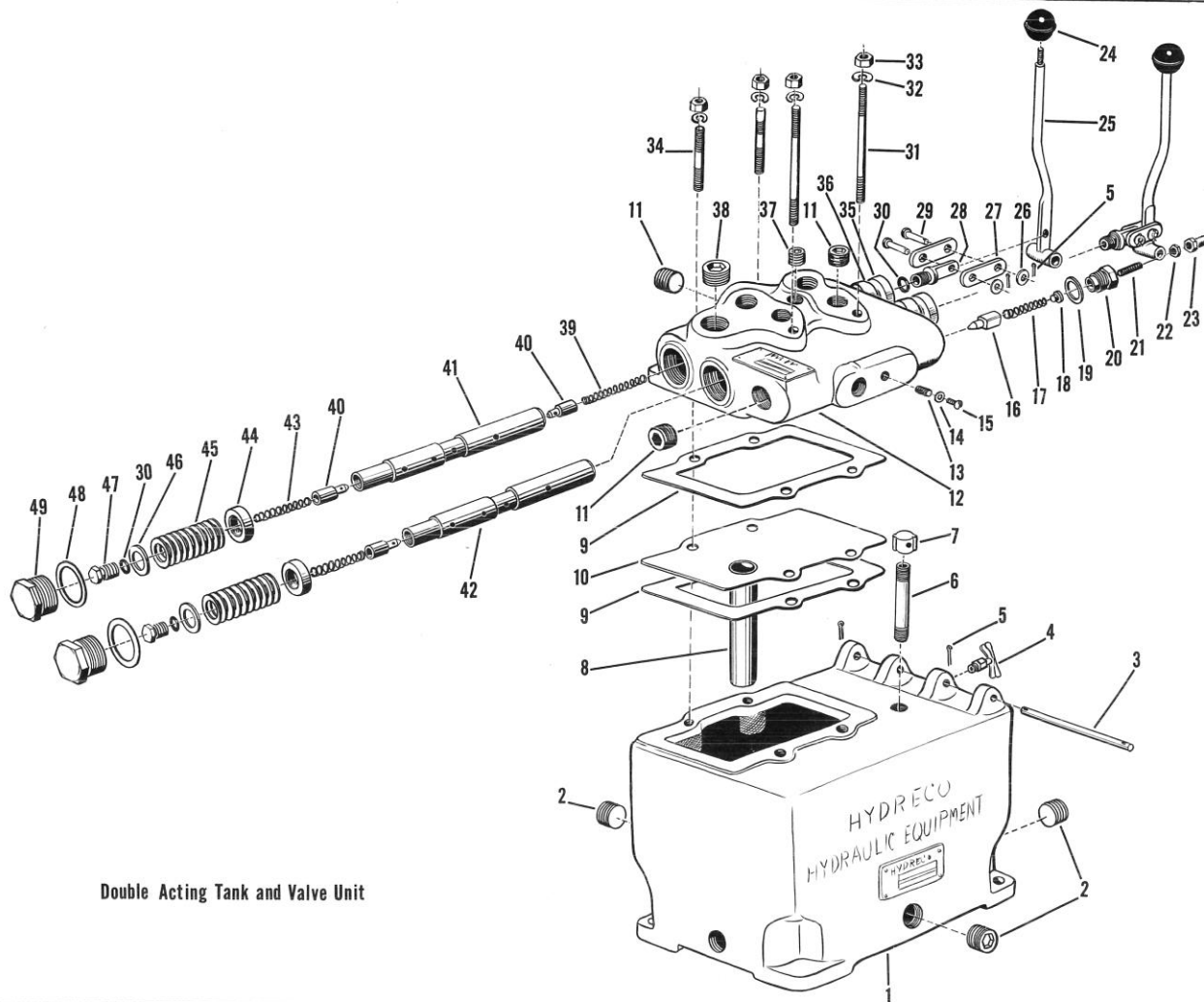
*These items listed for identification of parts only. For parts and service, contact the Hydraulic Equipment Co., 1100-222 St., Cleveland 17, Ohio.



**Hydraulic Pump PA-16-353-5
used on tractors starting with
serial no. 4TB and C 423 and up**

Ref. No.	Part No.	Description	No. Used	Ref. No.	Part No.	Description	No. Used
*	353-5	Pump Assembly	1	13	6X1010X3	Drive Gear	1
1	A238X2	Nut, 5/16 N. F.	4	14	A399X5	Key, 1/8 x 3/4	1
2	A252X8	Lockwasher, 5/16	4	15	2X10X1	Adaptor End	1
3	M2X138	Bracket	1	16	A112X6	Capscrew, 5/16 N. F. x 1 1/4 Hex Head	4
4	A133X10	Capscrew, 3/8 N. F. x 2 1/4, Socket Head	4	17	A362X7	Seal	1
5	3X10X1	Cover	1	18	A331X4	Ball Brg.	1
6	A550X2	Dowel Pin	2	19	M18X15A	Pulley	1
7	A340X12	Bearing (Roller)	2	20	A614X3	Set Screw	1
8	712X95B	Gasket (Outer)	2	21	A601X4	Set Screw, 1/4 - 20 - 3/8 Socket Head Knurled Cup Pt.	1
9	12X10X2	Wear Plate	2	22	A702X4	Set Screw, 1/4 - 20 - 3/8 Headless Hex Head - 1/2 Dog Pt.	1
10	712X96A-B	Gasket (Inner)	2	23	A281X1	Grease Fitting	1
11	1X1010X2	Housing	1				
12	6X1010X4	Driven Gear	1				

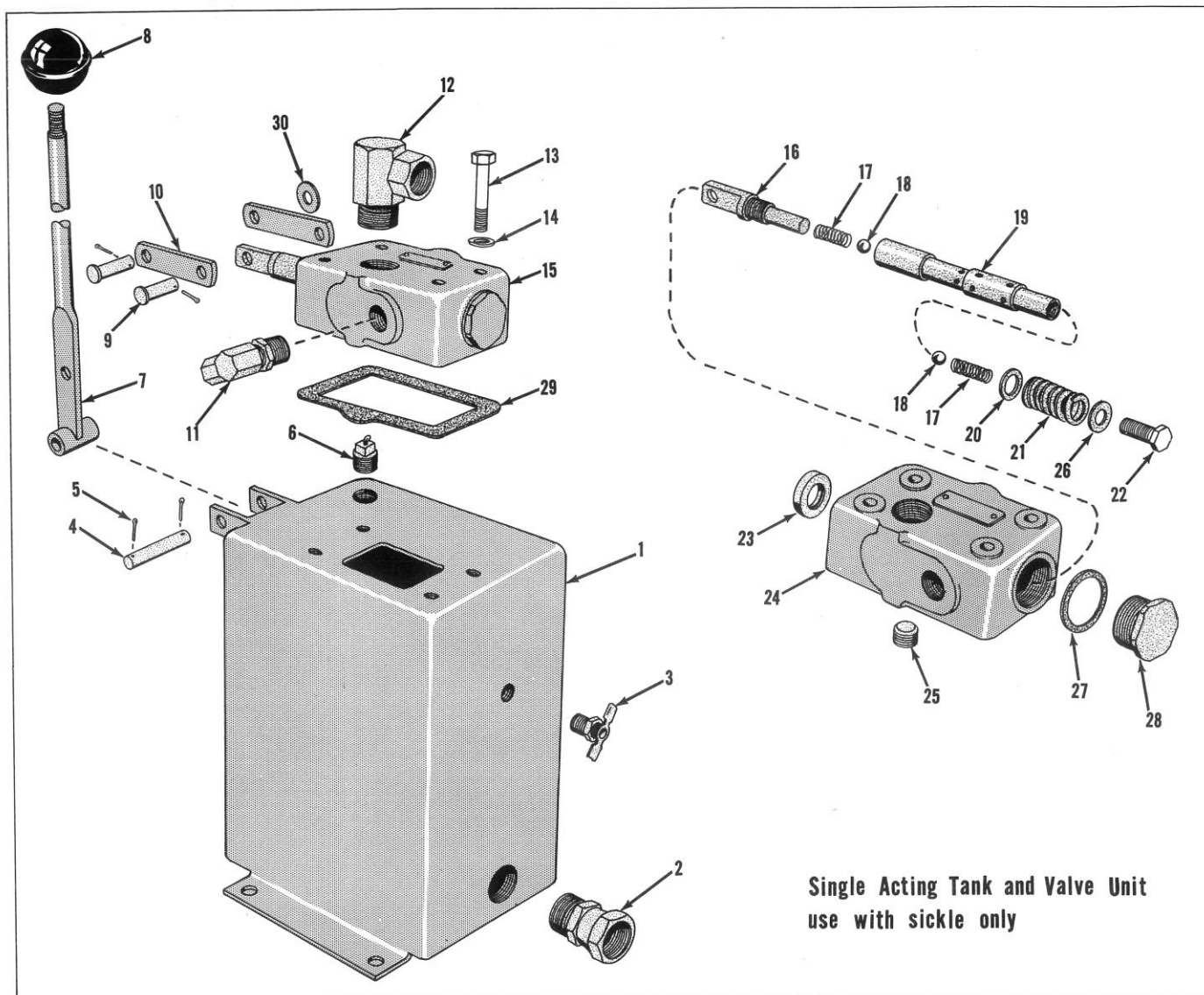
* This assembly available from Toro. Balance of items listed for identification of parts only. To obtain parts and service please contact the Hydreco Division of the New York Air Brake Co. located at 1100 222nd St. in Cleveland 17, Ohio.



Ref. No.	Part No.	Description	No. Used
1	T48	Tank	1
2	A300x5	Pipe Plug	3
3	810x55B	Pin	1
4	6254	Oil Level Cock	1
5	A267x2	Cotter Pin	6
6	A286x7	Breather Tube	1
7	178x22	Breather Cap	1
8	181x2	Tube	1
9	712x46	Gasket	2
10	M19x7	Baffle Plate	1
11	A300x4	Pipe Plug	3
12	B525x35	Housing	1
13	A180x4	Set Screw	1
14	A402x3	Washer	1
15	A151x2	Screw	1
16	415x12	Relief Valve Plunger	1
17	A501x40	Spring	1
18	544x19	Spring Guide	1
19	A401x23	Gasket	1
20	418x17	Cap	1
21	A232x10	Screw	1
22	A249x3	Jam Nut	1
23	A427x4	Acorn Nut	1
24	A479x1	Handle Ball	2
25	M6x64	Lever Assembly	2

Ref. No.	Part No.	Description	No. Used
26	A235x8	Washer	4
27	M8x26	Link	4
28	516x13	Plunger Eye	2
29	A360x5	Pin	4
30	A395x8	Seal Ring	4
31	856x123	Stud	2
32	A252x9	Lock Washer	4
33	A238x3	Nut	4
34	856x121	Stud	2
35	A364x9	Grease Seal	2
36	A362x18	Seal	2
37	A300x3	Pipe Plug	1
38	A298-5	Pipe Plug	1
39	A501x20	Spring	1
40	513x13A	Check Valve Plunger	3
41	512x63	D. A. Plunger	1
42	512x62	S. A. Plunger	1
43	A501x19	Spring	2
44	A506x1	Washer	2
45	A502x17	Spring	2
46	A408x14	Washer	2
47	514x94	Cap	2
48	A401x36	Gasket	2
49	514x93	Cap	2

NOTE: The above items are listed for identification of parts only.
To obtain parts and service, please contact the Hydraulic Equipment
Co., 1100-222 St., Cleveland 17, Ohio.



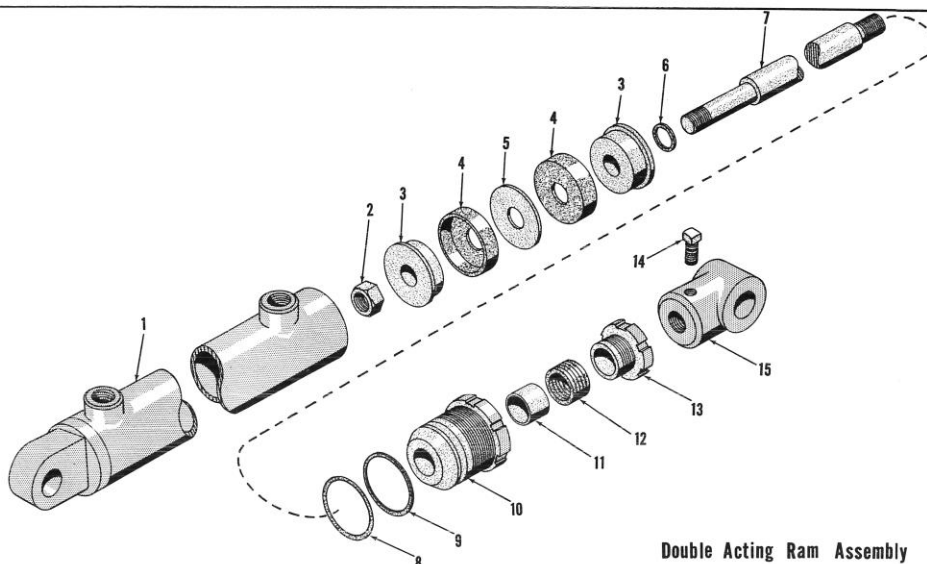
Ref. No.	Part No.	Description	No. Used
1	HL-3	Tank	1
2	353-26	Adapter Union	1
3	304-46	Drain Cock	1
4	Q150	Pin	1
5	3272-6	Cotter Pin	4
6	HL-25	Filler Plug Assembly	1
7	HL-4	Control Lever	1
8	233-1	Ball, Control Lever	1
9	283-1	Pin	2
10	HL-7	Link	2
11	353-27	Adapter Union	1
*	2812-1	Bushing	1
12	353-28	Adapter Union	1
13	323-12	Screw	4
14	262-1	Washer Seal	4
15	HL-24	Control Valve Assembly	1

* Not Illustrated

Ref. No.	Part No.	Description	No. Used
16	516X14	Plunger Eye	1
17	A501X17	Spring	2
18	A329X5	Ball	2
19	512X65	Operating Plunger	1
20	A408X11	Washer	2
21	A502X12	Spring	1
22	514X100K	Cap Assembly	1
23	A364X8	Seal	1
24	B525X39	Housing	1
25	A300X3	Pipe Plug	1
26	A528X3	Washer	1
27	A401X29	Gasket	1
28	514X95	Cap	1
29	HL-8	Gasket	1
30	3256-3	Washer, 5/16 cut	2

Note: Parts Ref. 16 thru 29 are listed for identification of parts only.
For parts and service contact the Hydreco Division of the New York
Air Brake Co. located at 1100 - 222nd St. in Cleveland 17, Ohio.

Toro Mfg. Corp.

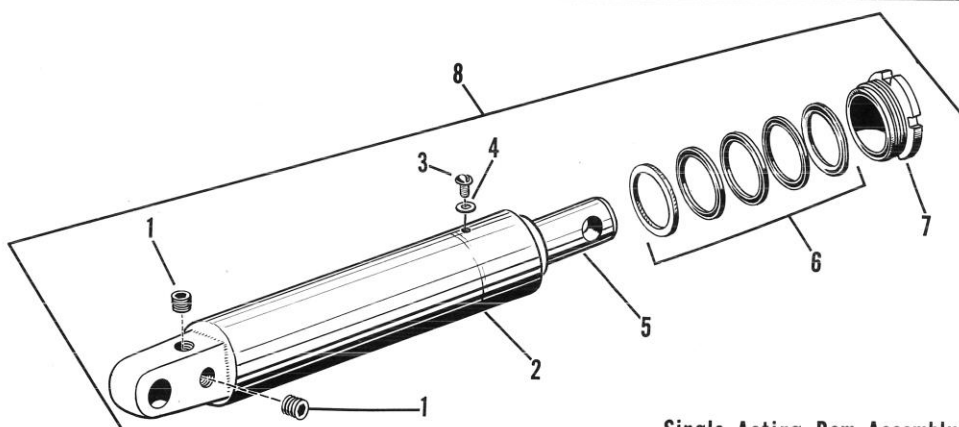


Double Acting Ram Assembly

Ref. No.	Part No.	Description	No. Used	Ref. No.	Part No.	Description	No. Used
*	353-3	Double Acting Ram Assy. Comp.	1	8	A-395X31	Seal Ring	1
1	2220X47-6	Cylinder Tube Assy.	1	9	A-394-X31	Back Up Ring	1
2	A-234X8	Nut, $\frac{3}{4}$ N. C. Anco-Lock	1	10	3920X10	Stuffing Box	1
3	6520X5	Piston Half	2	11	805X42	Bushing	1
4	7020X4	Cup	2	12	A464X1	Packing Assy.	1
5	6620X6	Piston Spacer	1	13	6910X5	Packing Nut	1
6	A401X19	Gasket	1	14	A-167X2	Set Screw	1
7	6410X47-13	5/16 Piston Rod	1	15	5000X31	Pivot Eye	1

* This assembly available from Toro. Balance of items listed for identification of parts only. To obtain parts and service please contact the Hydreco Division of the New York Air Brake Co. located at 1100 222nd St. in Cleveland 17, Ohio.

Toro Mfg. Corp.



Single Acting Ram Assembly
use with sickle only

Ref. No.	Part No.	Description	No. Used	Ref. No.	Part No.	Description	No. Used
1	*298X2	Pipe Plug	2	6	*A463X6	Packing Assembly	1
2	*2120X4-8	Cylinder Tube Assembly	1	7	*6920X3	Packing Nut	1
3	*A522X1	Screw	1	8	353-14	Single Acting Ram Assy. Comp.	1
4	*A402X3	Gasket	1				
5	*A2420X39-8	Plunger Assembly	1				

*These items listed for identification of parts only. For parts and service, contact the Hydraulic Equipment Co., 1100-222 St., Cleveland 17, Ohio.

**FIVE UNIT PARKMASTER
(Christmas Tree)
TRANSPORTING POSITION**

FIGURE I

Figure I shows mowers in cutting position. To ready mowers for transporting, first remove the tie rods (E) from position. Secondly remove 4th & 5th arms (C) from rear draft frame pin holders (D). Swing 4th & 5th arms around as shown in Figure II.

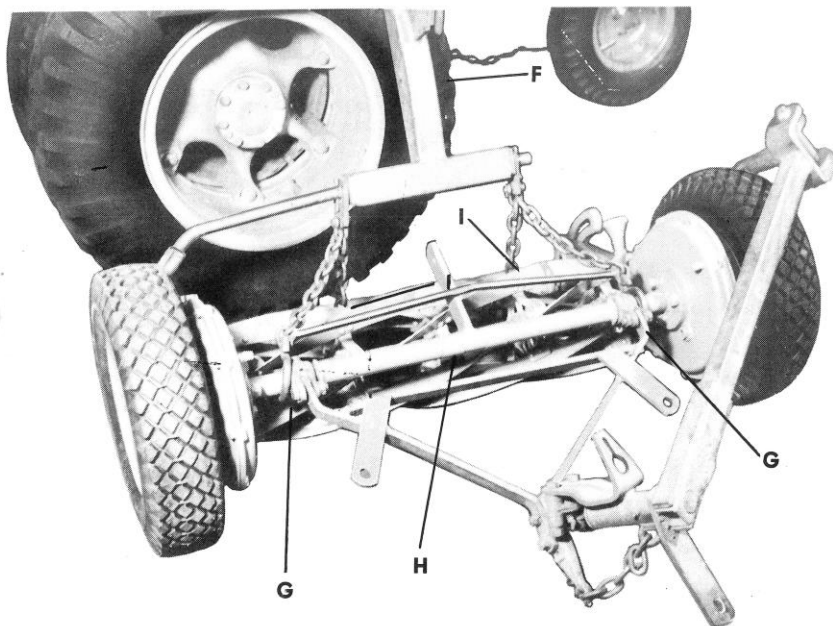
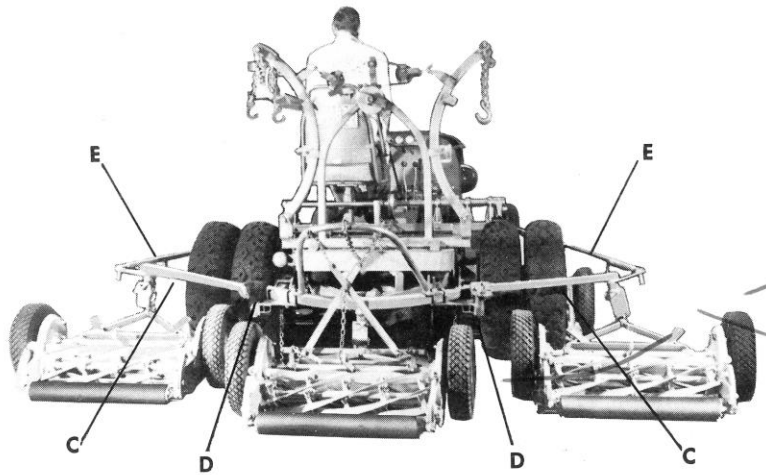
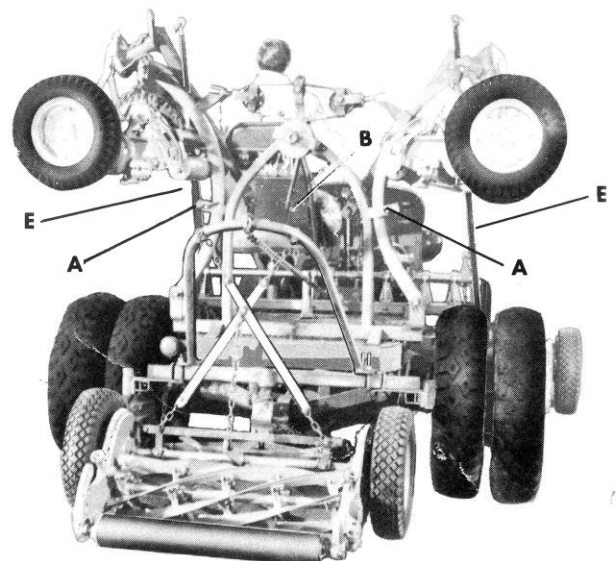


FIGURE II

Figure II shows mower in proper position for raising to transporting position. Lower lift arms (F) down to mower. Place chain hooks (G) on spacer tube (H) on outside of drawbar clamps. Place other two chain hooks (I) to rear spacer bar. Mowers are now ready for raising.

FIGURE III

Grasp crank (B) and wind up mower, as soon as mower has arrived at proper position insert pin (A) locking mower. Follow same procedure with 2nd mower inserting 2nd pin (A). Reinsert one end of tie rods (E) into side brackets on tractor frame and other end into eye on lift arms (F). Mowers are then ready for transporting.



FIVE UNIT PARKMASTER
(Christmas Tree)
CUTTING POSITION

FIGURE III

To ready mowers for cutting remove tie rods (E) from position. Remove lock pin (A) and with crank (B) lower mower to the ground. Then remove second pin (A) lowering second mower to the ground. (CAUTION! Do not remove pin on ratchet wheel; cranking effort is necessary to lower mowers to ground; removal of ratchet pin will cause mowers to fall too rapidly allowing no crank control, thereby endangering operator's safety.)

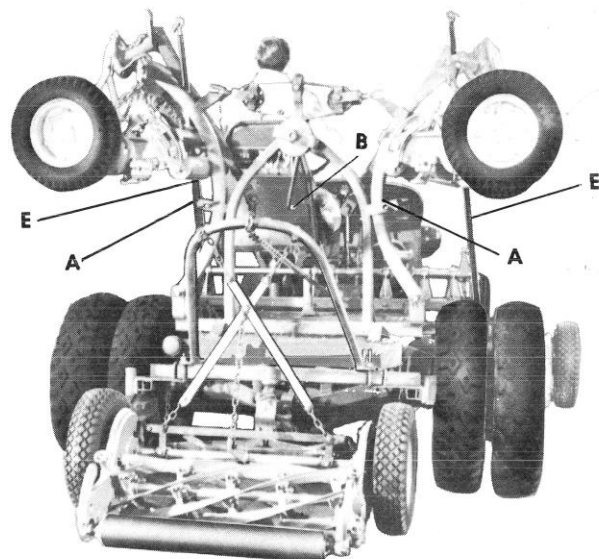


FIGURE II

When mowers have reached the ground they should be in position as shown in Figure II with the rear roller toward rear wheel. Remove chain hooks (G) from spacer tube (H) and rear spacer bar. Install 4th & 5th arms (C) on draw-bar ball.

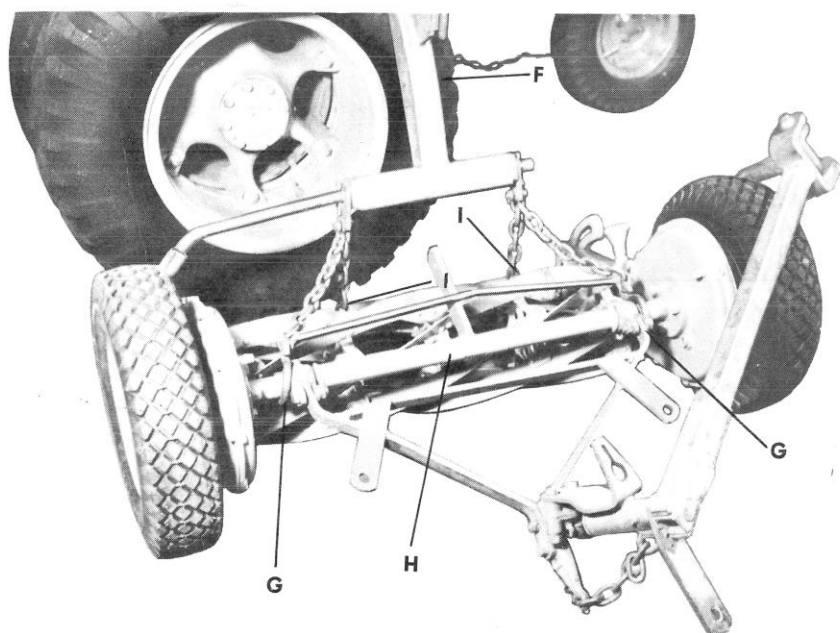


FIGURE I

Swing 4th & 5th units around as shown in Figure I. Install 4th & 5th arms (C) into rear draft frame pin holders (D). Then install one end of tie rods (E) into side brackets mounted on tractor frame and the other end to bracket on 4th & 5th arms (C). Crank up lift arms (F) as shown in illustration (Figure I) and insert pins. Mowers are now in position for cutting.

