



416-H GT

Garden Tractor

Model No. 73423 – 7900001 & Up

Parts Catalog

ORDERING REPLACEMENT PARTS

To order replacement parts, please supply: the part number, the quantity, and the description of each part desired.

Contents

Description	Page	Description	Page
Hood Assembly	1	Hydrostatic Transmission (Continued)	21
Frame Axle and Steering System	2	Eaton Hydrostatic Transmission #1100-062	22
Hoodstand, Console	3	Eaton Hydrostatic Transmission #1100-062	23
Footrest & Hoodstand Side Covers	4	Starter	24
Gauges, Warning Lights & Controls	5	Engine Housing	25
Hydraulic Lift System	6	Flywheel	26
Hydraulic Lift System	7	Cam & Crankshafts	27
Hydro Controls, Brake System	8	Oil Fill Tube & Base	28
Hydro Drive & Parking Brake	9	Oil Filter	29
Fender, Seat & Tail Lights	10	Gear Case & Ignition Controls	30
PTO Clutch And Cover	11	Ignition Electronics	31
PTO Clutch System	12	Air Cleaner	32
Engine Assembly	13	Governor	33
Transmission Control & Filter Assembly	14	Intake Manifold & Carburetor	34
Wheel Assemblies	15	Choke Control	35
Hitch Assembly	16	Fuel Filter & Pump	36
Battery Assembly	17	This Page Intentionally Left Blank	37
Fuel Tank Assembly	18	Engine Cylinder Block	38
Hoodstand Electrical Housing & Wire Harness ..	19	Engine Cylinder Block	39
Hydrostatic Transmission	20	Note:	

Part Description Abbreviations

Part descriptions in this catalog may include the following abbreviations.

Abbreviation	Meaning	Abbreviation	Meaning
AR	as required	HWH	hex washer head
ASM	assembly	HWHTF	hex washer head thread forming
CARR	carriage	INC	incorporated
DEG	degrees	LH	left hand
FH	flat head	PH	pan head
GA	gauge	PPH	Phillips pan head
HF	hex flange	PTO	power take off
HFV	hex flange washer	RH	right hand
HH	hex head	SFH	slotted fillister head
HHF	hex head flange	SH	square head
HHST	hex head self tapping	SHWH	slotted hex washer head
HJ	hex jam	SPH	slotted pan head
HOC	height-of-cut	STD	standard
HS	hex socket	TAP	self tapping
HSBH	hex socket button head	TH	truss head
HSFH	hex socket flat head	TTH	Torx truss head
HSH	hex socket head		

WH wing head

Important Format Explanations

This catalog uses special formats to convey information in illustrations and parts lists. Specifically, one format is used in conjunction with service assemblies and another with quantities associated with reference numbers.

Service Assemblies

Parts within service assemblies have reference numbers in the form $X:Y$. X is the reference number of the service assembly and Y is a sequential number unique to each part within the service assembly.

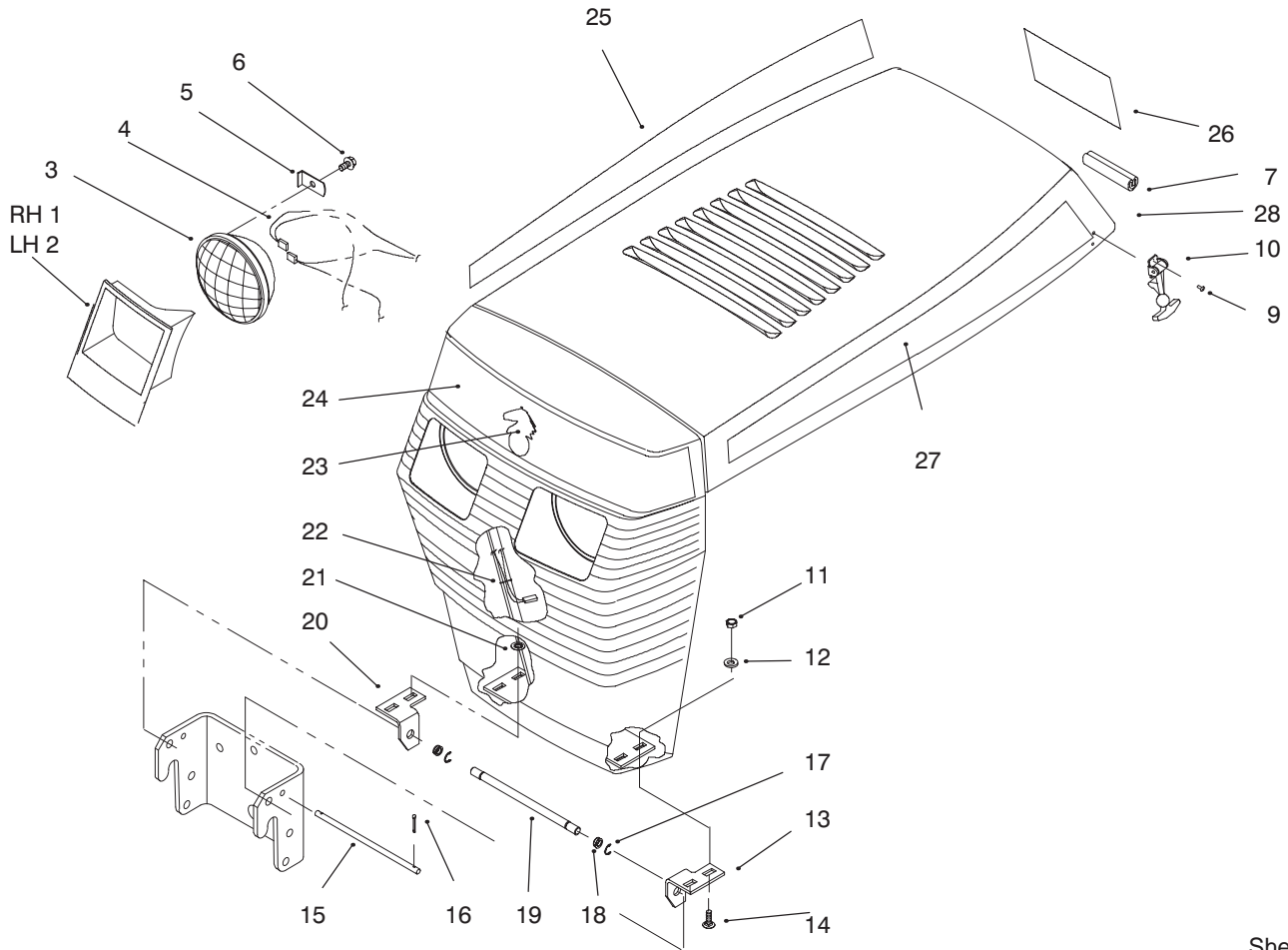
For example, a wheel assembly might be identified by reference number 6, the tire by 6:1, the valve by 6:2, and the wheel by 6:3. When you order the assembly identified by reference number 6, you receive all parts identified by reference numbers 6:1, 6:2, and 6:3. However, you may also order any part individually.

Reference numbers of this type appear in part lists and as callouts in illustrations.

Reference Numbers with Quantities

Illustrations may have a quantity in parentheses next to a reference number, in the form $X (Y)$. X is the reference number. Y in parentheses is the quantity of the part identified by the reference number.

For example, the illustration callout 4 (2) indicates that two parts are used in that instance.

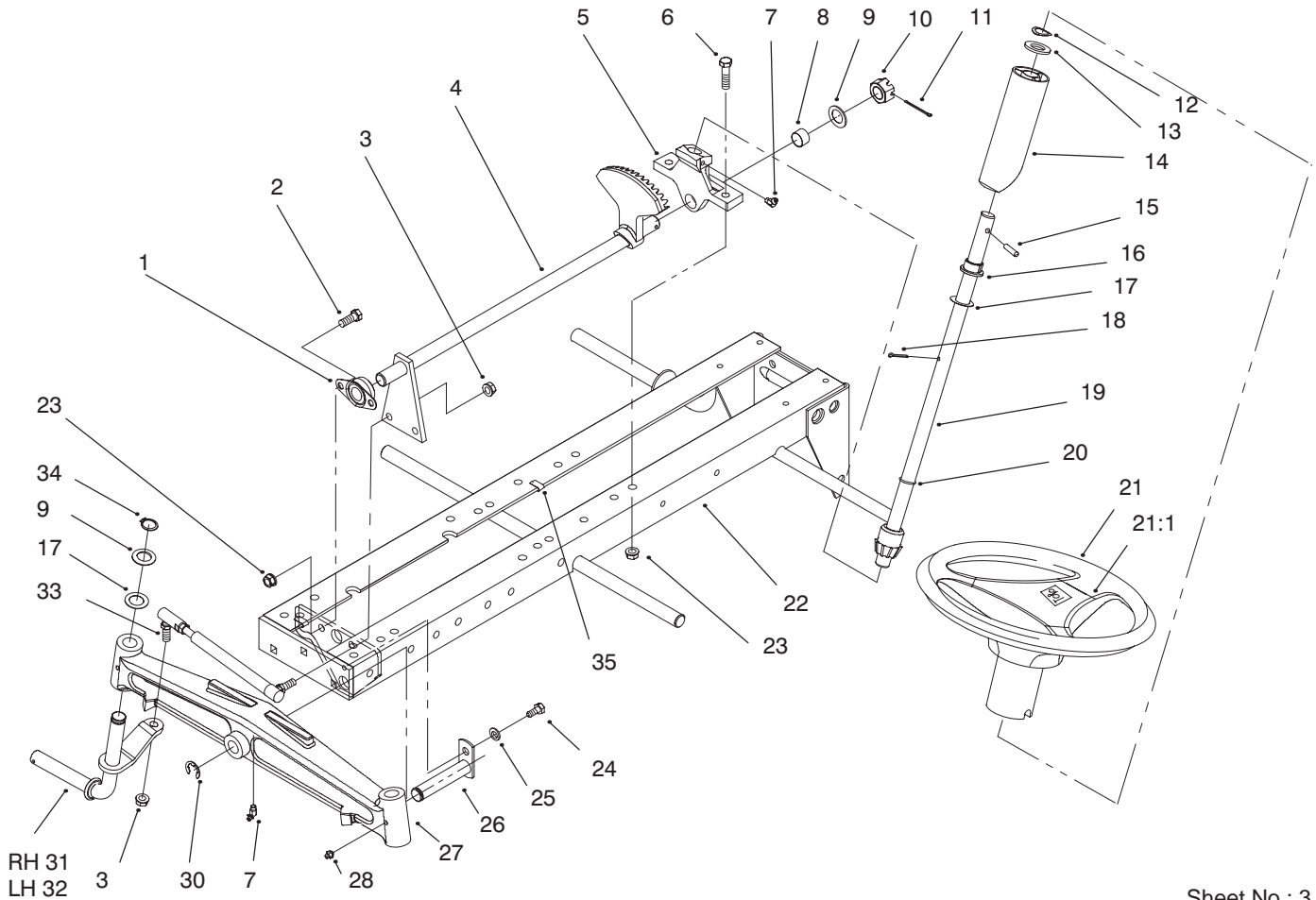


Sheet No.: 2

Hood Assembly

Ref. No.	Part No.	Qty.	Description
1	109495	1	Bezel-Headlight
2	109494	1	Bezel-Headlight
3	102881	2	Headlamp
4	114052	1	Wire Harness
5	109459	2	Clamp-Headlight
6	9266714	2	Screw-HWHTF
7	111757	1	Edging
8	323-15	2	Screw-HH
9	117432	4	Poprivet
10	117344	2	Handle-Latch
11	3296-42	4	Nut-Lock
12	3256-22	4	Washer-Flat
13	116747	1	Bracket-Grill
14	3229-25	4	Screw-CARR
15	109367-03	1	Bracket-Brake
16	3272-1	2	Pin-Cotter
17	5979	2	Bushing
18	105797	2	Ring-Retaining
19	116745	1	Rod-Pivot
20	116746	1	Bracket-Grill
22	3290-378	1	Tie-Cable
23	94-3736	1	Plate-Logo
24	92-9826	1	Decal-Hood
25	92-9825	1	Decal-Hood
26	92-9837	1	Decal-Danger

Ref. No.	Part No.	Qty.	Description
27	92-9824	1	Decal-Hood
28	112358	1	Hood & Grill

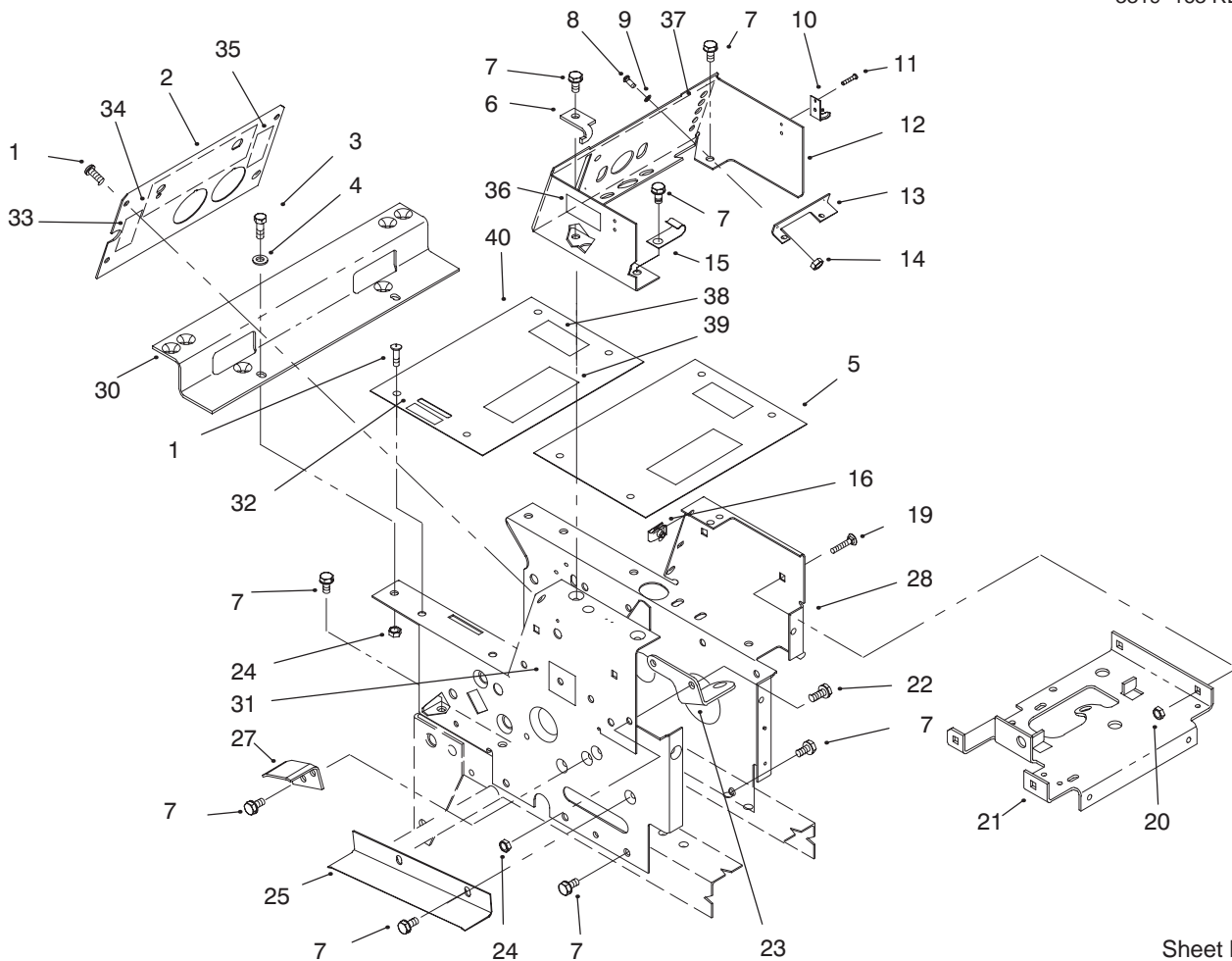


Sheet No.: 3

Frame Axle and Steering System

Ref. No.	Part No.	Qty.	Description
1	6472	1	Bearing-Pillow
2	323-6	2	Screw-HH
3	3296-6	4	Nut-Lock
4	78-2880-03	1	Shaft-Steering
5	88-2710-03	1	Support-Steering
6	323-8	2	Screw-HH
7	302-11	2	Fitting-Grease
8	6397	1	Bushing
9	1278	3	Washer-Shim
10	32136-5	1	Nut-Hex Slot
11	3272-19	1	Pin-Cotter
12	7896	1	Washer-Bowed
13	109262	2	Washer
14	113443	1	Tube-Shaft
15	32121-111	1	Pin-Spiral
16	109189	1	Bearing-Flange
17	5210	14	Washer-Shim
18	3272-21	1	Pin-Cotter
19	92-4987	1	Shaft-Steering
20	237-69	1	O-Ring
21	94-3519	1	Wheel-Steering
21:1	88-3870	1	Cover-Steering Wheel
22	94-6673-01	1	Frame
23	3296-39	4	Nut-Lock
24	322-1	1	Screw-HH
25	3253-4	1	Washer-Lock

Ref. No.	Part No.	Qty.	Description
26	6216	1	Pin-Pivot
27	5638-01	1	Axle-Front
28	302-5	2	Fitting-Grease
30	5618	1	Ring-Retaining
31	113382-01	1	Spindle-RH
32	113381-01	1	Spindle-LH
33	78-2900-01	2	Rod ASM-Tie
34	32120-93	2	Ring-Retaining

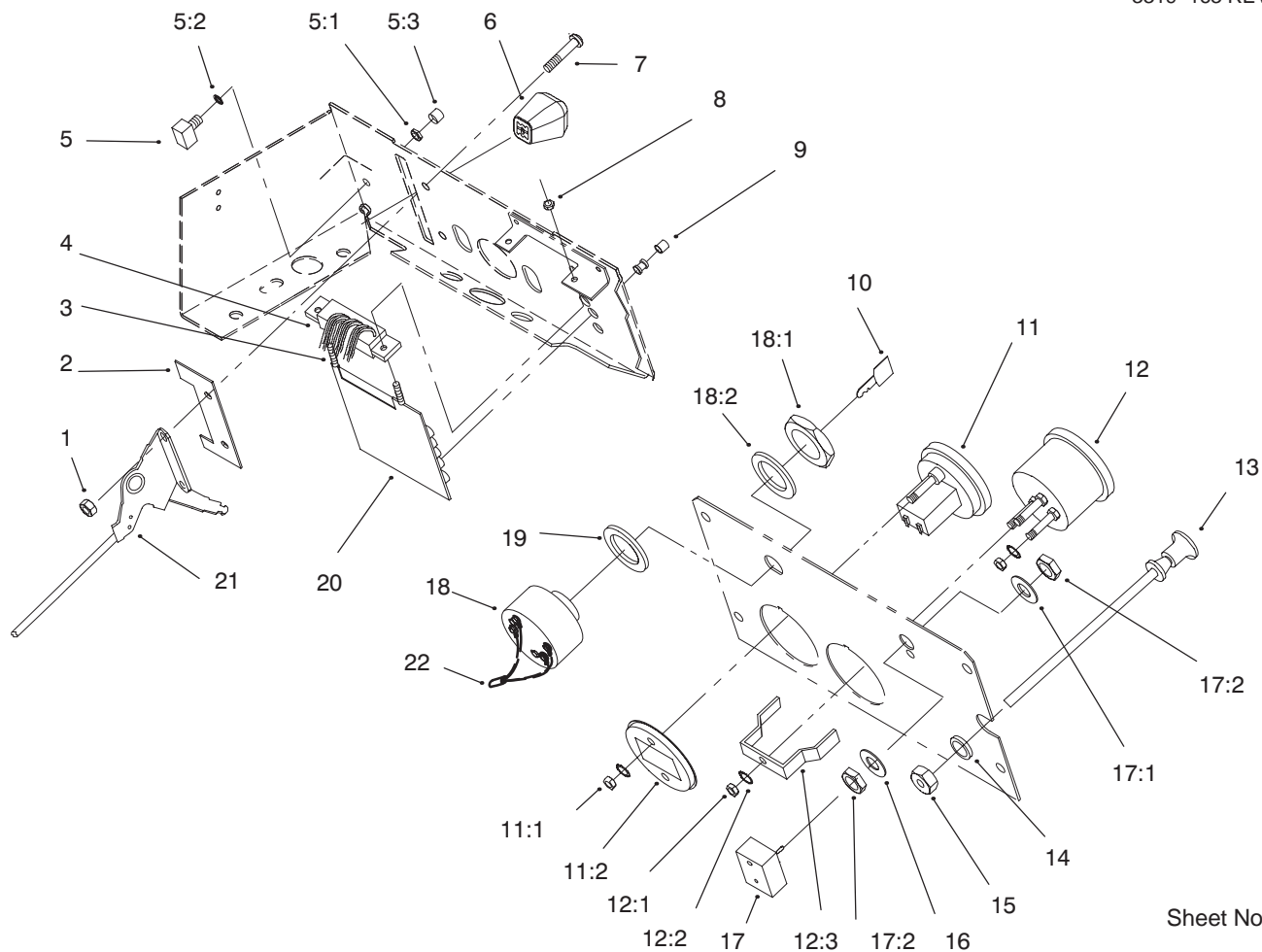


Sheet No.: 7

Hoodstand, Console

Ref. No.	Part No.	Qty.	Description
1	9108372	8	Screw-Phcr
2	78-5620-03	1	Plate-Hoodstand Rear
3	322-5	2	Screw-HH
4	3256-23	2	Washer-Flat
5	116862-03	1	Plate-Top Hoodstand
6	112415	1	Stop-PTO
7	9266944	13	Screw-HH
8	9107622	2	Screw-Phcr
9	9201504	2	Washer-Lock
10	117343	2	Latch-Hood
11	117432	4	Poprivet
12	78-5610-03	1	Console
13	112506	1	Bracket
14	9159604	2	Nut
15	111392	1	J-Clip
16	107069	4	Nut-Panel
19	117371	4	Screw-CARR
20	9151126	4	Nut
21	78-3000-03	1	Bracket-Battery Support
22	322-2	2	Screw-HH
23	78-1540-03	1	Bracket-Control
24	3296-29	4	Nut-Lock
28	92-1525-03	1	Hoodstand
30	107951-03	1	Bracket-Fender
31	92-9832	2	Decal-416 Hydro

Ref. No.	Part No.	Qty.	Description
33	111960	1	Decal-PTO Clutch
34	79-2470	1	Decal-Back Plate
35	78-7300	1	Decal-Choke
36	111926	1	Decal-Electric
37	78-7270	1	Decal-Lower Dash
38	116445	1	Decal-Parking Brake
39	92-8946	1	Decal-Danger

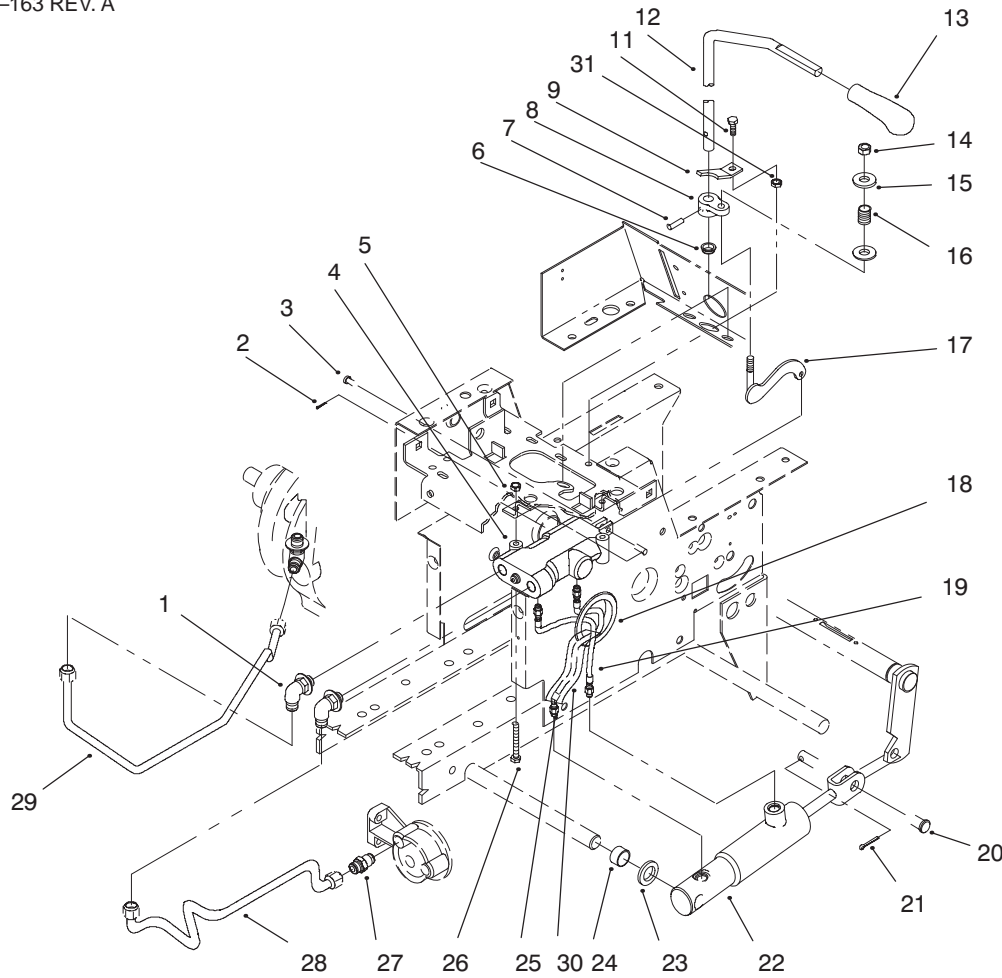


Sheet No.: 11

Gauges, Warning Lights & Controls

Ref. No.	Part No.	Qty.	Description
1	9157404	2	Nut
2	120590-03	1	Plate-Stop
3	9107562	2	Screw-Phcr
4	117377	1	Harness-P C Board
5	116796	1	Switch-Button
5:1	111359	1	Nut-Hex
5:2	111767	1	Washer-Lock
5:3	117217	1	Button-Switch
6	66-0120	1	Knob
7	9107922	2	Screw-Phcr
8	9157324	2	Nut-Lock
9	111343	5	Lens & Bushing ASM
10	62-7770	2	Key-Ignition
11	94-3723	1	Hourmeter
11:1	32149-9	2	Nut/Washer-Lock
11:2	94-1849	1	Cup-Retainer
12	79-0060	1	Voltmeter
12:1	3217-27	1	Nut-HH
12:2	3255-25	1	Washer-Lock
12:3	78-0080	1	Bracket-Mounting
13	114951	1	Control-Choke
14	3256-37	1	Washer-Flat
15	109530	1	Nut
16	9202594	1	Washer
17	102138	1	Switch-Light
17:	102950	1	Washer

Ref. No.	Part No.	Qty.	Description
17:	113179	1	Nut
18	111216	1	Switch-Ignition
18:1	101884	2	Nut-Hex
18:2	9201604	1	Washer-Lock
19	9202624	1	Washer-Flat
20	114825	1	Board-PC
21	115392	1	Control-Throttle

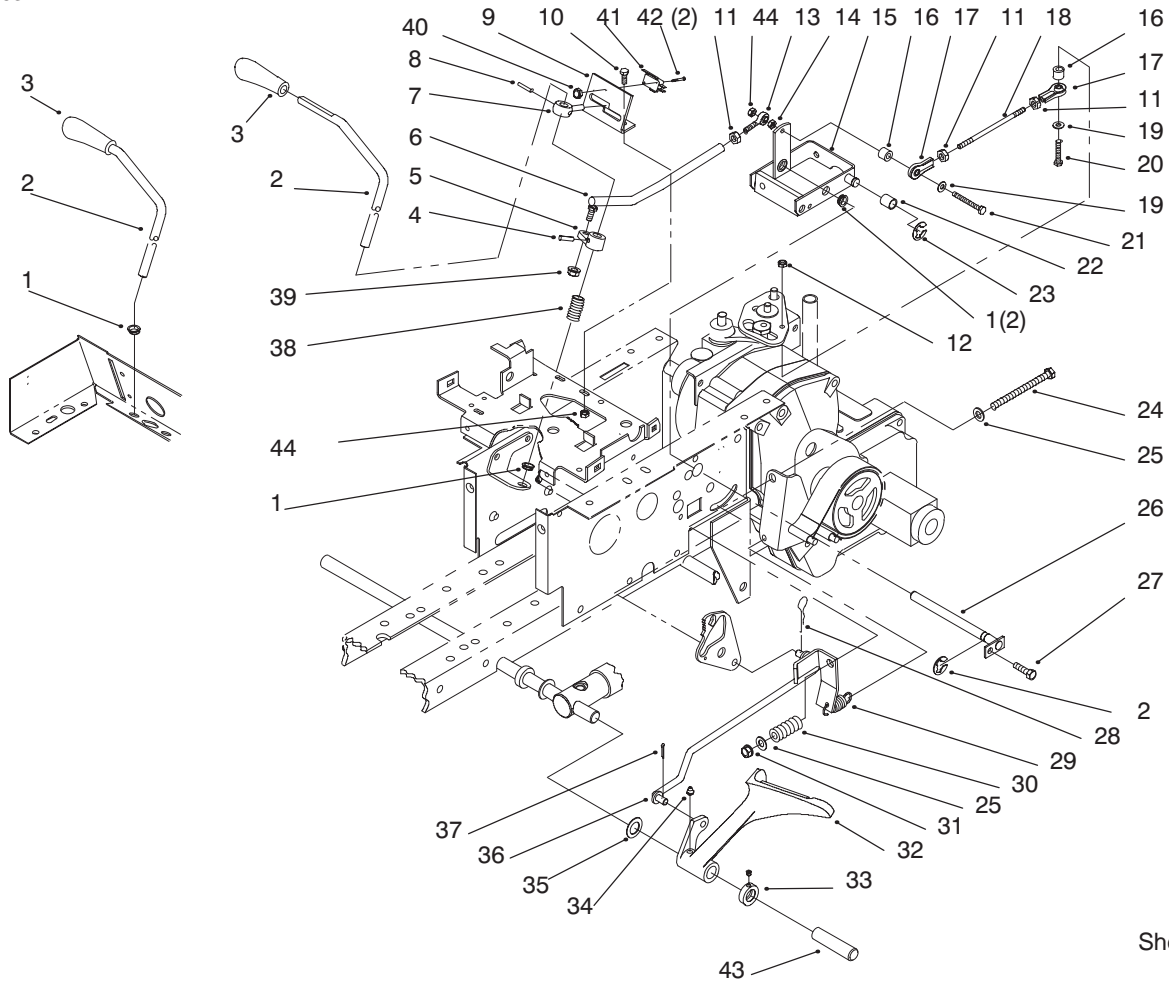


Sheet No.: 14

Hydraulic Lift System

Ref. No.	Part No.	Qty.	Description
1	108365	2	Fitting-Tube
2	3272-1	1	Pin-Cotter
3	9321204	1	Pin-Clevis
4	114000	1	Valve ASM - Hyd
5	3296-42	2	Nut-Lock
6	5983	1	Bushing
7	933198	1	Pin-Spirol
8	116302	1	Arm-Control
9	116305-03	1	Bracket-Control
11	321-4	1	Screw-HH
12	78-5670	1	Rod-Lift Control
13	94-6694	1	Knob-Lift
14	3296-29	2	Nut-Lock
15	3256-23	2	Washer-Flat
16	104841	1	Spring
17	78-5640	1	Valve Actuator Bar ASM
18	106267	1	Grommet
19	94-6697	1	Hose-Hydraulic
20	9329974	1	Pin-Clevis
21	3272-11	1	Pin-Cotter
22	119340	1	Cylinder-Hydraulic
23	9202324	1	Washer-10 GA
24	101757	1	Spacer
25	94-6698	1	Hose-Hydraulic
26	321-11	2	Screw-HH

Ref. No.	Part No.	Qty.	Description
27	102628	1	Fitting-Tube
28	86-9290	1	Tube ASM-Hyd Return
29	86-9280	1	Tube ASM-Hyd Pressure
31	3296-8	1	Nut-Lock
32	94-6699	2	Adaptor-Hose

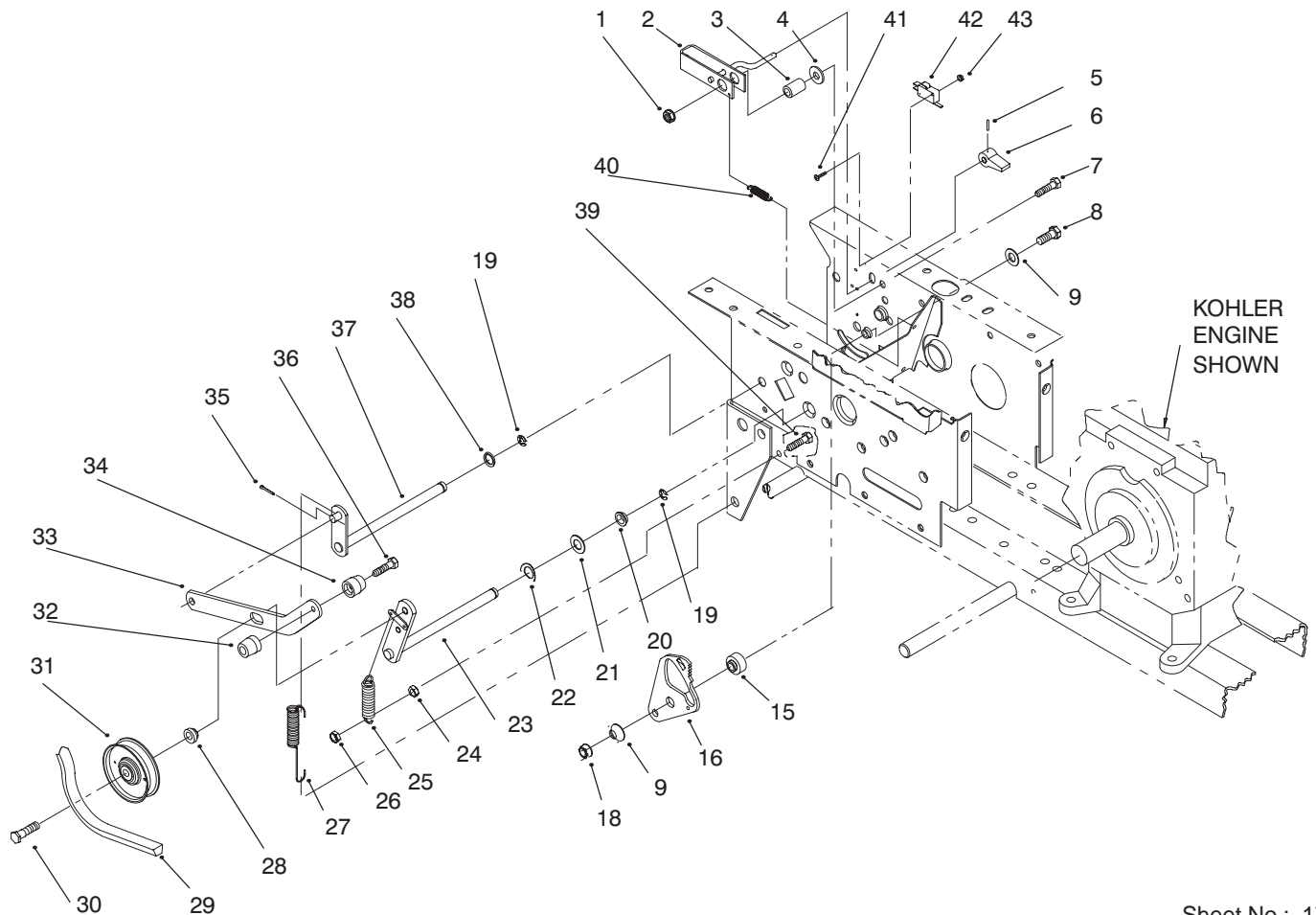


Sheet No.: 16

Hydro Controls, Brake System

Ref. No.	Part No.	Qty.	Description
1	5983	3	Bushing
2	78-5660	1	Rod-Control
3	94-6668	1	Knob-Control
4	933198	1	Pin-Spirol
5	116321	1	Arm-Control
6	116324	1	Rod & Balljoint ASM
7	118660	1	Guide-Control
8	32121-94	1	Pin-Spirol
9	78-5631-03	1	Bracket-Control
10	321-4	2	Screw-HH
11	3220-1	3	Nut-HH
12	3296-8	1	Nut-Lock
13	116407	1	Rod End
14	3217-5	1	Nut-Hex
15	113454-03	1	ASM-Cam Control
16	100304	2	Bearing
17	110189	2	Rod End ASM
18	108904	1	Rod-Control
19	3256-22	2	Washer-Flat
20	321-9	1	Screw-HH
21	9114584	1	Screw-HH
22	100656	1	Bearing-Cam Return
23	32120-47	3	Ring-Retaining
24	323-23	1	Screw-HH
25	3256-24	2	Washer-Flat
26	108496	1	Pivot

Ref. No.	Part No.	Qty.	Description
27	9266944	1	Screw-HH
28	9335044	1	Hairpin
29	103125	1	Spring-Extension
30	108680	1	Spring-Compression
31	3296-39	1	Nut-Lock
32	94-3707-01	1	Pedal-Brake
33	111383	1	Collar w/Set Screw
33:1	3245-32	1	Screw-Set
34	302-5	1	Fitting-Grease
35	1278	1	Washer-Shim
36	94-6654-03	1	Rod-Brake
37	3272-10	1	Pin-Cotter
38	101853	1	Spring-Compression
39	3296-4	1	Nut-Lock
40	9157324	2	Nut-Lock
41	115230	1	Switch-Clutch
42	9109484	2	Screw-Phcr
43	94-6683	1	Sleeve-Protective
44	3296-8	3	Nut-Lock

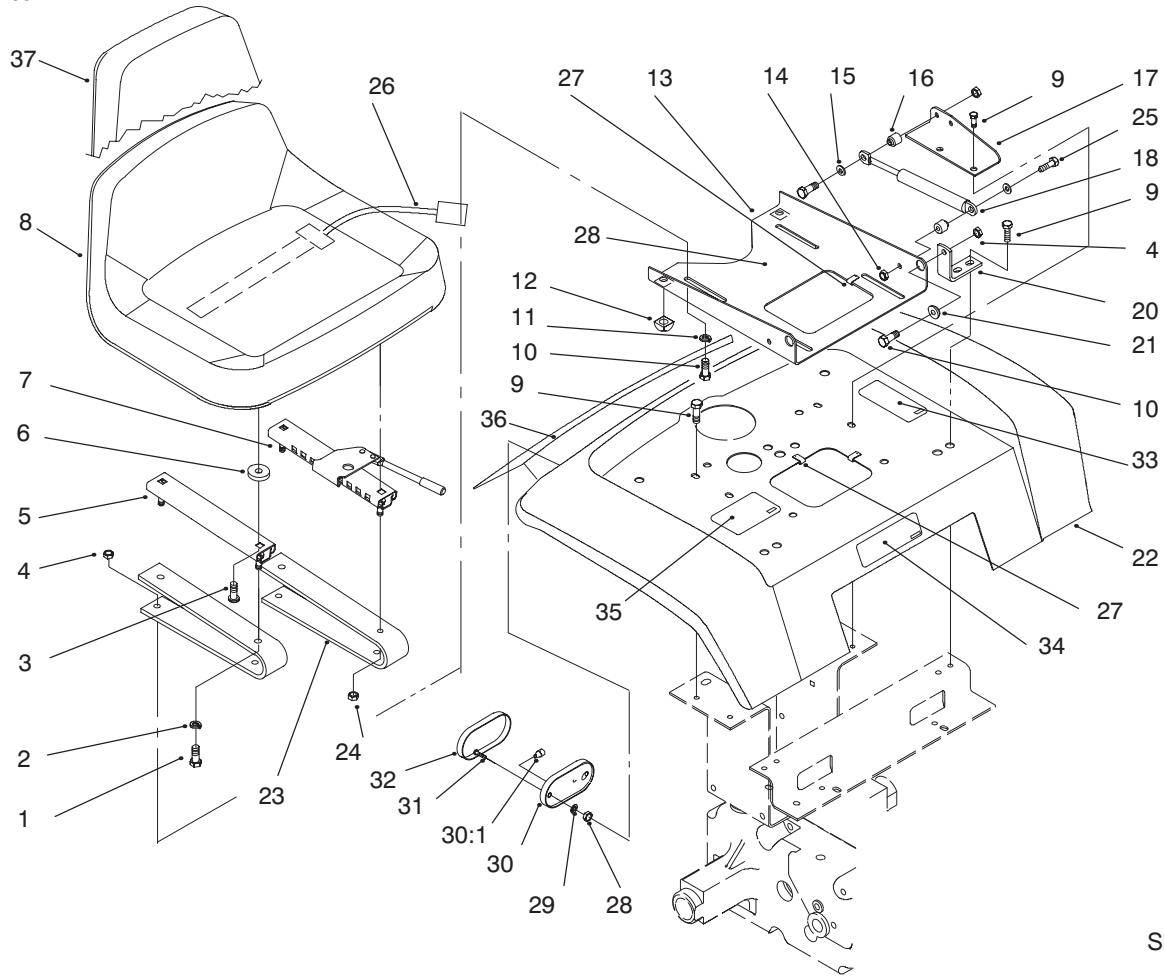


Sheet No.: 17

Hydro Drive & Parking Brake

Ref. No.	Part No.	Qty.	Description
1	32128-19	1	Nut-HF
2	78-8500-03	1	Pawl-Parking Brake
3	102025	1	Spacer
4	9202414	1	Washer-Flat
5	933135	1	Pin-Spirol
6	118860	1	Knob-Parking Brake
7	323-9	1	Screw-HH
8	323-8	1	Screw-HH
9	3256-4	2	Washer-Flat
15	94-6688	1	Spacer-Plate
16	108716	1	Plate-Neutral Cam
18	3296-39	1	Nut-Lock
19	32120-47	1	Ring-Retaining
20	7879	1	Bushing-Flanged
21	3765	1	Washer-Flat
22	114823	1	Washer-Curved Spring
23	78-6020	1	Idler Arm ASM
24	3217-5	1	Nut-Hex
25	107938	1	Spring-Extension
26	3296-42	1	Nut-Lock
29	114895	1	Belt-Hydro Drive
30	323-8	1	Screw-HH
31	112791	1	Pulley-Idler
39	321-6	1	Screw-HH
40	83-2820	1	Spring-Extension

Ref. No.	Part No.	Qty.	Description
41	9109484	2	Screw-Phcr
42	111332	1	Switch-Interlock
43	9157324	2	Nut-Lock

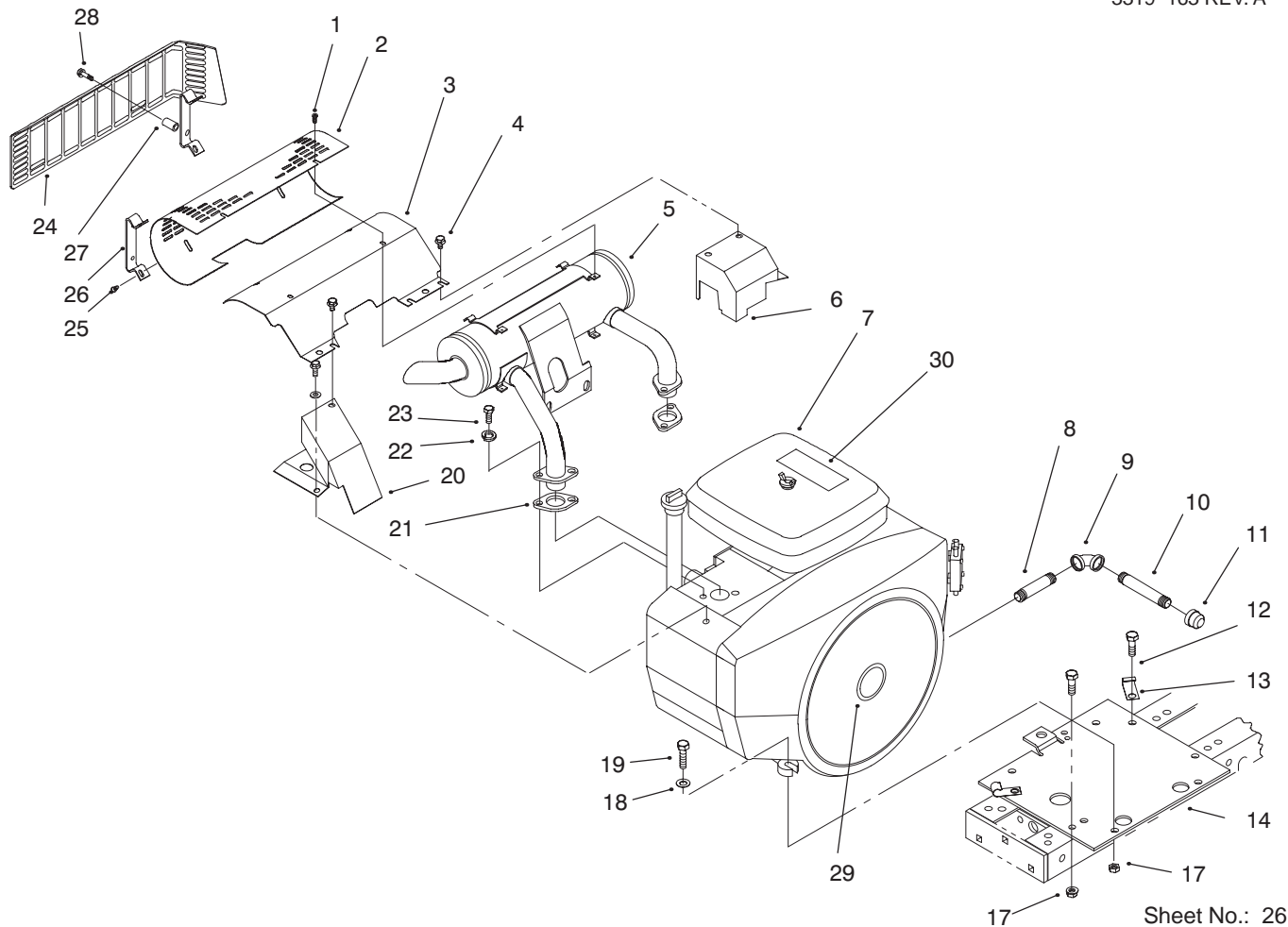


Sheet No.: 21

Fender, Seat & Tail Lights

Ref. No.	Part No.	Qty.	Description
3	910865	4	Screw
4	3296-29	6	Nut-Lock
5	114265	1	Slide-Seat
6	109989	4	Spacer
7	114264	1	Adjuster-Seat
9	9266944	10	Screw-HH
10	322-4	6	Screw-HH
11	3256-23	4	Washer-Flat
12	111071	2	Bumper-Rubber
13	78-2990-03	1	Plate-Seat Pivot
14	3296-8	2	Nut-Lock
15	3256-22	2	Washer-Flat
16	114344	2	Spacer
17	114345-01	1	Bracket-Gas Spring
18	114343	1	Spring-Gas
20	105524	2	Bracket-Pivot
21	105503	2	Bushing
22	94-3722-01	1	Fender
23	114263-03	2	Spring-Seat
24	3296-29	4	Nut-Lock
25	321-8	2	Screw-HH
26	38-1420	1	Switch-Seat
27	3023	2	Clip
28	3296-27	4	Nut-Lock
29	3254-1	4	Washer-Lock
30	105202	2	Base-Light

Ref. No.	Part No.	Qty.	Description
30:1	109045	2	Lamp-Wedge
31	3250-31	4	Screw-Phcr
32	112564	2	Lens-Light
37	94-3719	1	Seat



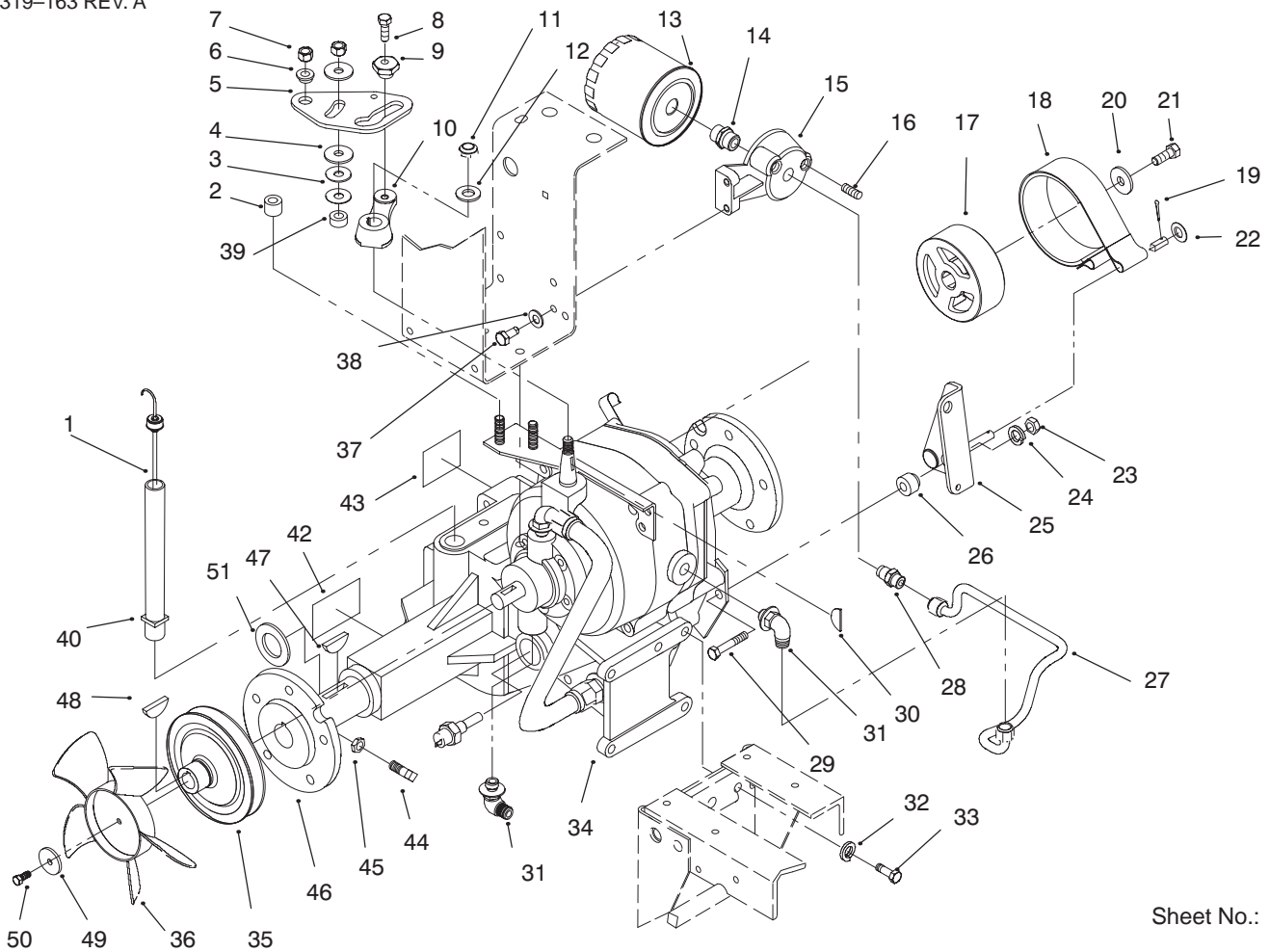
Sheet No.: 26

Engine Assembly

Ref. No.	Part No.	Qty.	Description
1	114888	6	Screw
2	94-6664	1	Shield-Heat
3	94-1803-03	1	Baffle-Deflector
4	49-2040	3	Screw-HH
5	116471	1	Muffler
6	114216-03	1	Cover-Exhaust Rear
7	94-1810	1	Engine-Onan P216G I/10976G
*	95-7690	1	Engine-Onan P216G I/10976H
8	114636	1	Nipple
9	114764	1	Elbow-90°
10	114763	1	Nipple
11	288-4	1	Cap-Pipe
12	323-6	4	Screw-HH
13	8830	2	Retainer-"J"
14	116609-03	1	Plate-Engine
17	3296-39	8	Nut-Lock
18	3256-24	4	Washer-Flat
19	323-8	4	Screw-HH
20	114215-03	1	Cover-Exhaust Front
21	57-9210	2	Gasket-Manifold
22	3253-4	4	Washer-Lock
23	322-3	4	Screw-HH
29	118530	1	Name Plate-Toro Logo

Ref. No.	Part No.	Qty.	Description
30	118540	1	Decal-Power Plus 16
31	3255-9	6	Washer-Lock

* not illustrated

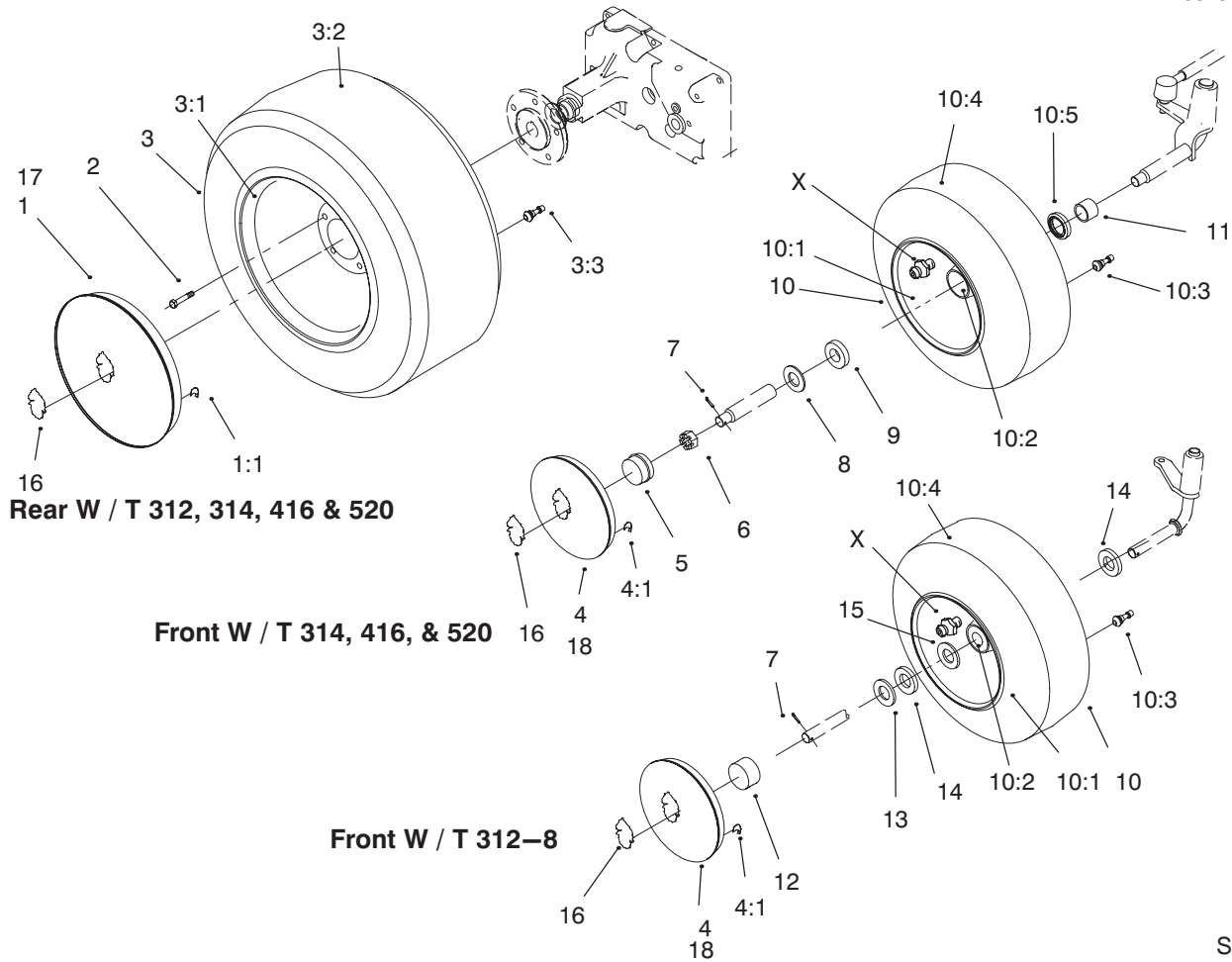


Sheet No.: 28

Transmission Control & Filter Assembly

Ref. No.	Part No.	Qty.	Description
1	110768-03	1	Dipstick
2	108326	1	Spacer-Pivot
3	100365	2	Washer-Spring Disc
4	100305	2	Washer-Friction
5	108333	1	Plate-Cam
6	100309	1	Bushing-Cam Pivot
7	108881	2	Nut-Hex
8	9080196	1	Screw-HH
9	106661	1	Cam
10	108325-03	1	Arm-Speed Control
11	3296-45	1	Nut
12	3256-26	1	Washer-Flat
13	79-5270	1	Filter-Oil
14	5991	1	Fitting-Filter
15	108323	1	Base-Filter
16	281-10	1	Plug-Pipe
17	106719	1	Drum-Brake
18	109371	1	Brake Band
19	3272-6	2	Pin-Cotter
20	2844	1	Washer-Flat
21	3235-22	1	Screw-HH
22	3256-24	2	Washer-Flat
23	3296-39	1	Nut-Lock
24	3256-4	1	Washer-Flat
25	78-7740-03	1	Pivot Arm-Brake
26	109356	1	Bushing-Pivot

Ref. No.	Part No.	Qty.	Description
27	79-5020	1	Tube-Filter To Pump
28	102628	1	Fitting-Tube
29	323-9	1	Screw-HH
30	3257-24	1	Key-Woodruff
31	108365	2	Fitting-Tube
32	3253-21	4	Washer-Lock
33	323-5	4	Screw-HH
34	94-6678	1	Transaxle/Decal
35	108316	1	Pulley-Hydro
36	108393	1	Fan-Hydro
37	322-3	2	Screw-HH
38	3253-4	2	Washer-Lock
39	108327	1	Spacer-Pivot
40	106448	1	Nipple-Trans Filler
42	88-2790	1	Decal-Danger
43	94-1834	1	Decal-Unidrive
44	3243-5	4	Screw-Set
45	3218-3	4	Nut-HJ
46	105763-03	2	Hub-Wheel
47	937108	2	Key-Woodruff
48	937089	2	Key-Woodruff
49	103995	1	Washer
50	9080026	1	Screw-HH
51	106826	2	Washer-Thrust



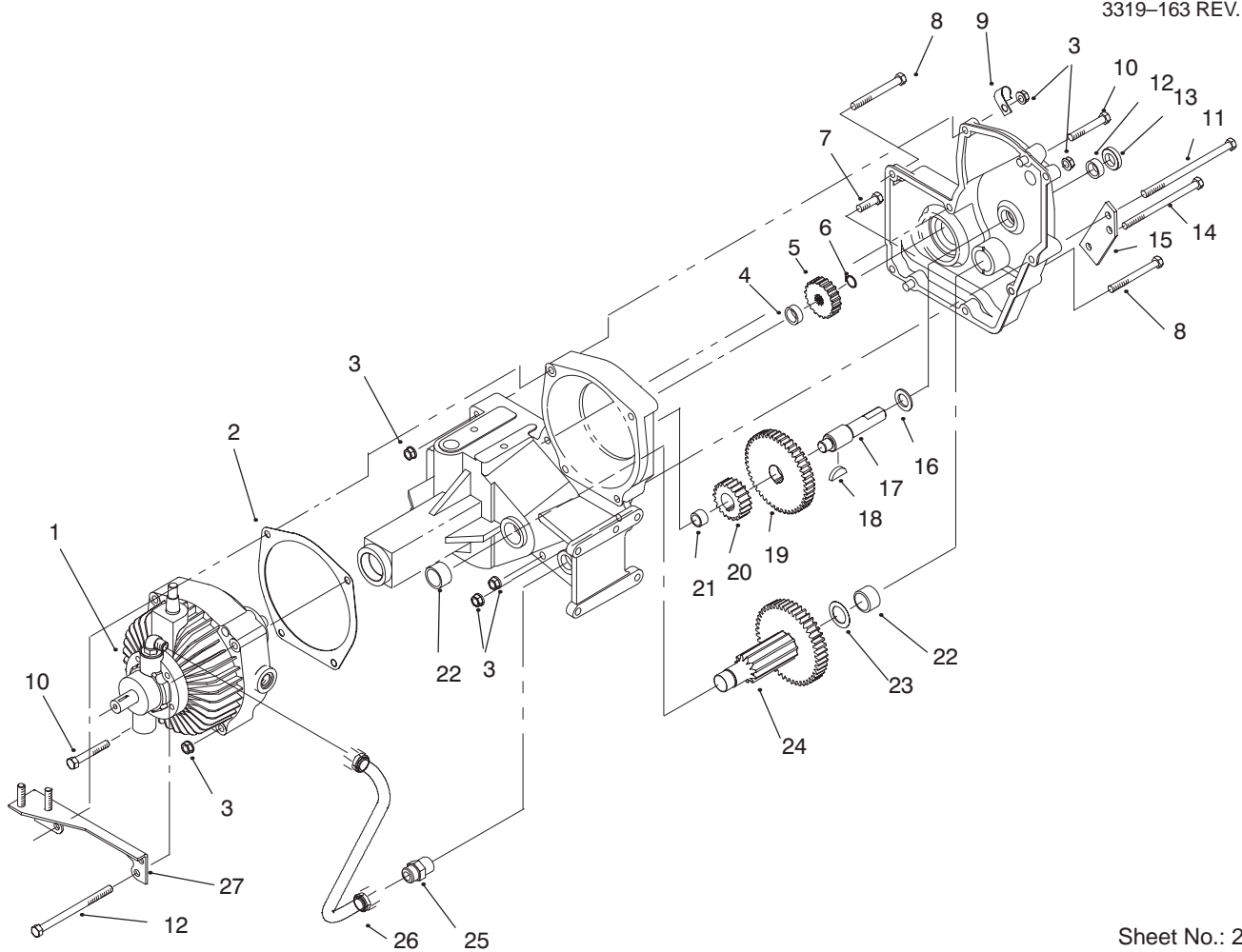
Sheet No.: 29

Wheel Assemblies

Ref. No.	Part No.	Qty.	Description
1	94-3731	2	Hubcap-12"
1:1	94-9729	8	Clip-Hubcap
2	83-2720	10	Bolt-Lug
3		2	Wheel/Tire ASM-Rear
3:1	111516	2	Wheel
3:2	116744	2	Tire
3:3	5108	2	Valve-Tire Tubeless
4	94-3730	2	Hubcap-8"
4:1	94-9729	6	Clip-Hubcap
7	3272-17	2	Pin-Cotter
10	93-9800	2	ASM-Wheel & Tire
10:1	93-9801	2	ASM-Wheel w/Zerk
10:2	110513	4	Bearing-Wheel
10:3	5108	2	Valve-Tire Tubeless
10:4	117127	2	Tire
10:6	109500	2	Fitting-Grease
12	111951	2	Cap-Hub
13	111952	2	Washer
14	1278	4	Washer-Shim
15	5210	2	Washer-Shim
16	94-3736	4	Plate-Logo
17	94-3718	2	Hubcap ASM
17:1	94-3731	2	Hubcap-12"
17:2	94-3736	2	Plate-Logo
18	94-3717	2	Hubcap ASM
18:1	94-3730	2	Hubcap-8"

Ref. No.	Part No.	Qty.	Description
18:2	94-3736	2	Plate-Logo
*	100079	A/R	Tube-Front (312)
*	7007	A/R	Tube-Rear (ALL)
*	105293	A/R	Tube-Front (314 / 416)
*	112819	A/R	Tube-Front (520)

* Optional equipment



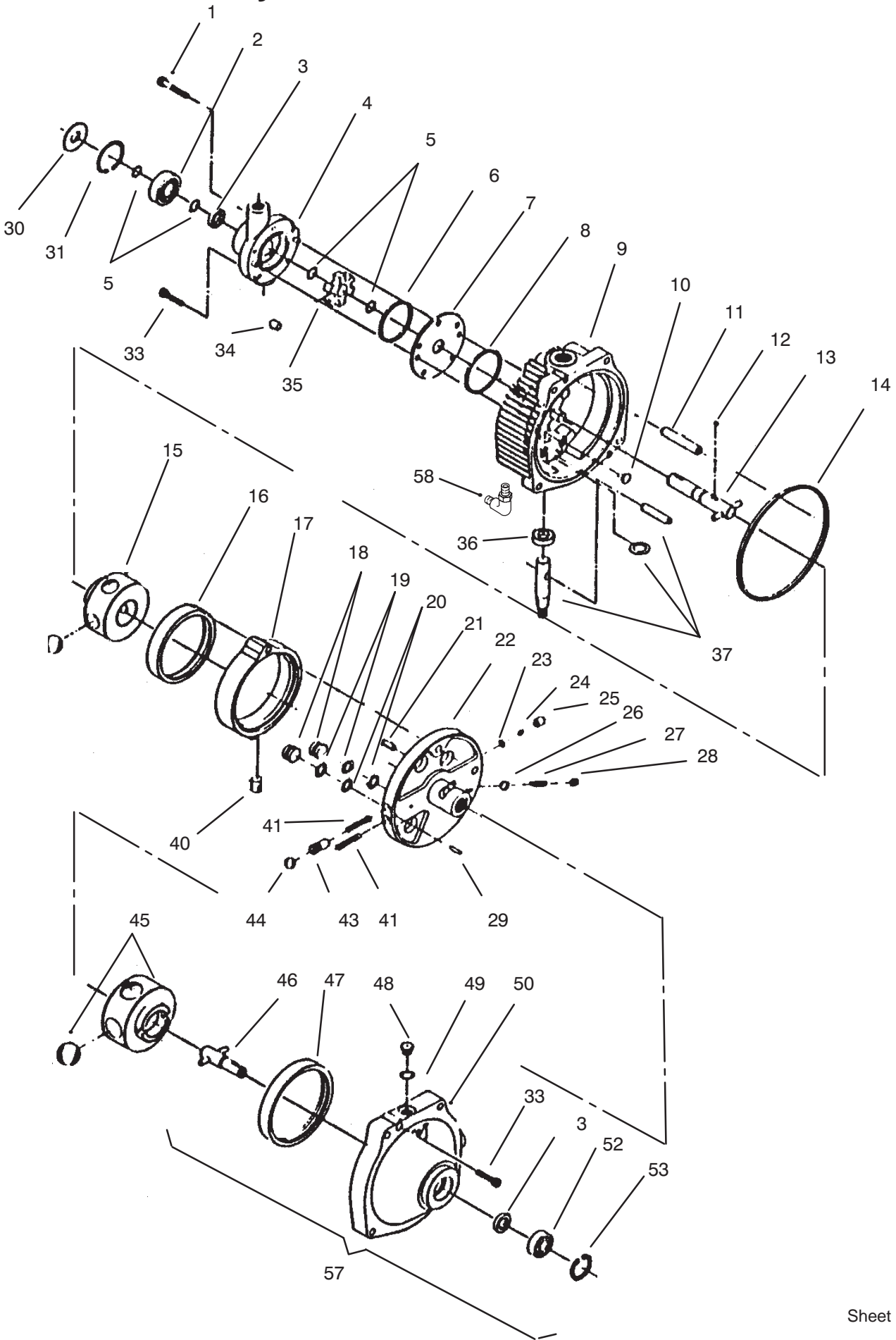
Sheet No.: 202

Hydrostatic Transmission (Continued)

Ref. No.	Part No.	Qty.	Description
1	92-9848	1	Trans-Hydro (Service)
2	108319	1	Gasket-Transmission
3	3296-39	6	Nut-Lock
4	108366	1	Spacer-Gear
5	109751	1	Gear-20t
6	32120-64	1	Ring-Retaining
7	9080356	1	Screw-HH
8	323-15	2	Screw-HH
9	8830	1	Retainer-"J"
10	9080406	2	Screw-HH
11	323-26	1	Screw-HH
12	1538	1	Bearing-Needle
13	108357	1	Seal-Oil
14	323-25	3	Screw-HH
15	109367-03	1	Bracket-Brake
16	7956	1	Washer-Thrust
17	109370	1	Shaft-Brake
18	937099	1	Key-Woodruff
19	109752	1	Gear-46t
20	109742	1	Gear-20t
21	1518	1	Bearing-Needle
22	1532	2	Bearing-Needle
23	9547	1	Washer-Thrust
24	109703	1	ASM-Gear
25	108364	1	Fitting-Hyd

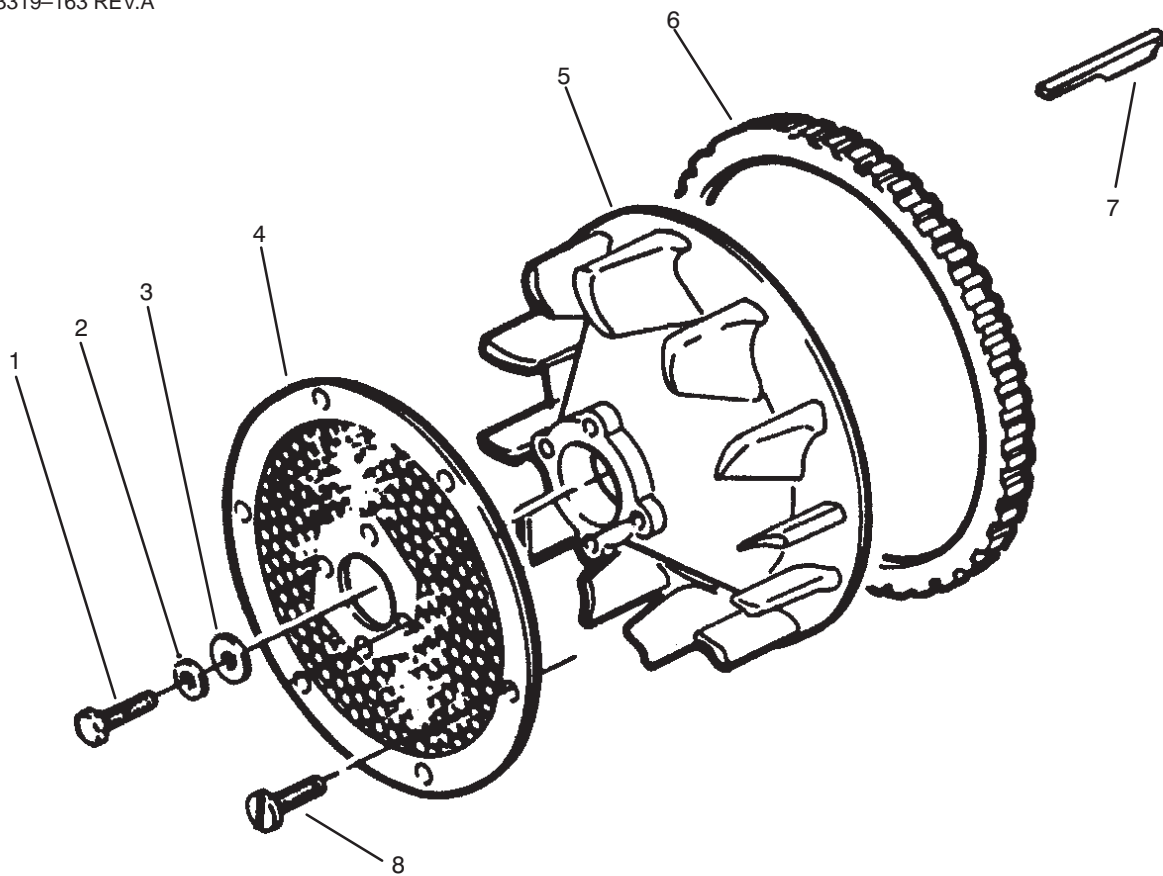
Ref. No.	Part No.	Qty.	Description
26	111217	1	Tube-Suction
27	108329-03	1	Plate-Control

Eaton Hydrostatic Transmission #1100-062



Part Identified in illustration but not in part list are not used on this model

3319-163 REV.A



Sheet No.: 403

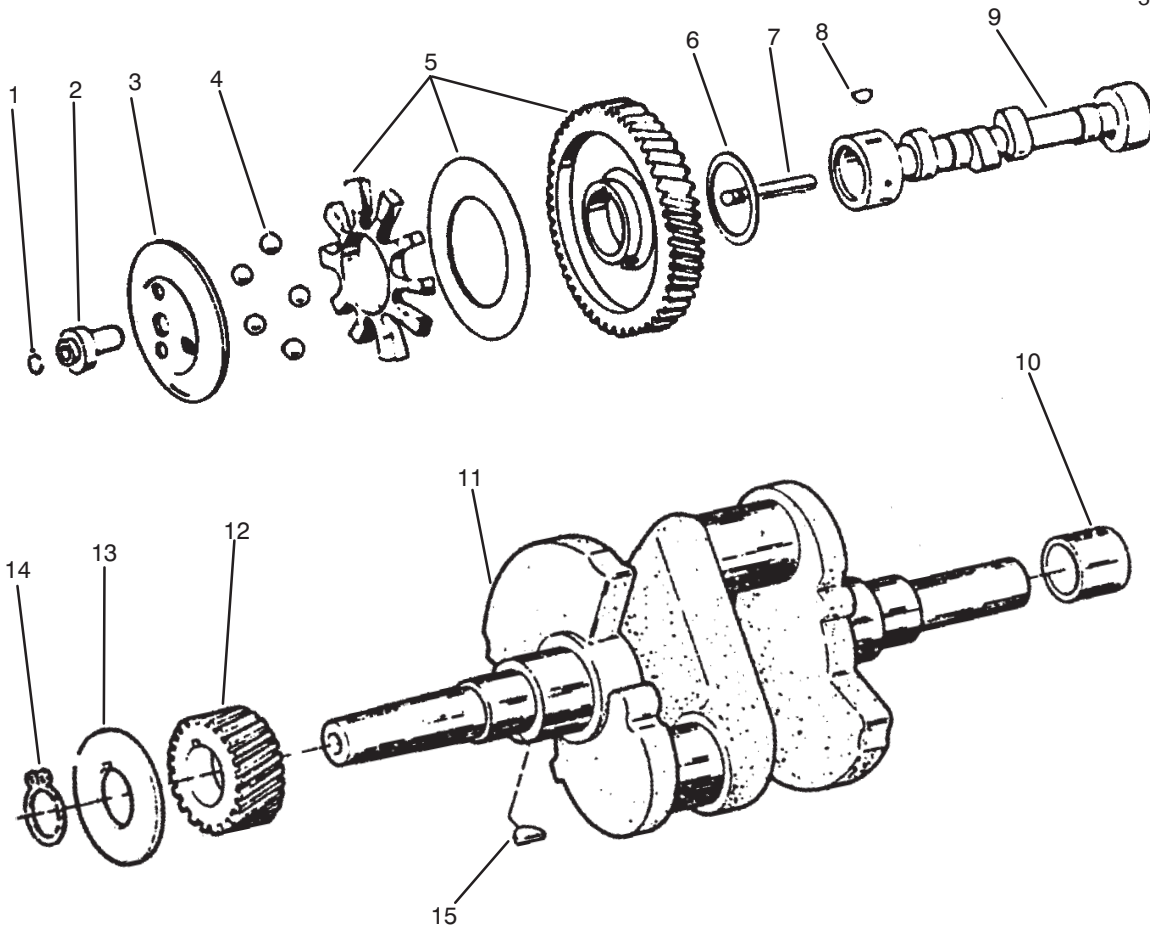
Flywheel

Ref. No.	Part No.	Qty.	Description
1	57-8150	1	Screw-HH
2	82-1320	1	Washer-Flat
3	59-0810	1	Washer-Flat
4	79-6440	1	Screen-Air Inlet
5	71-5920	1	Flywheel Incl 6
6	57-8180	1	Gear-Ring
7	71-6190	1	Key-Flywheel
8	71-6340	6	Screw

Ref. No.	Part No.	Qty.	Description

Part Identified in illustration but not in part list are not used on this model

3319-163 REV. A

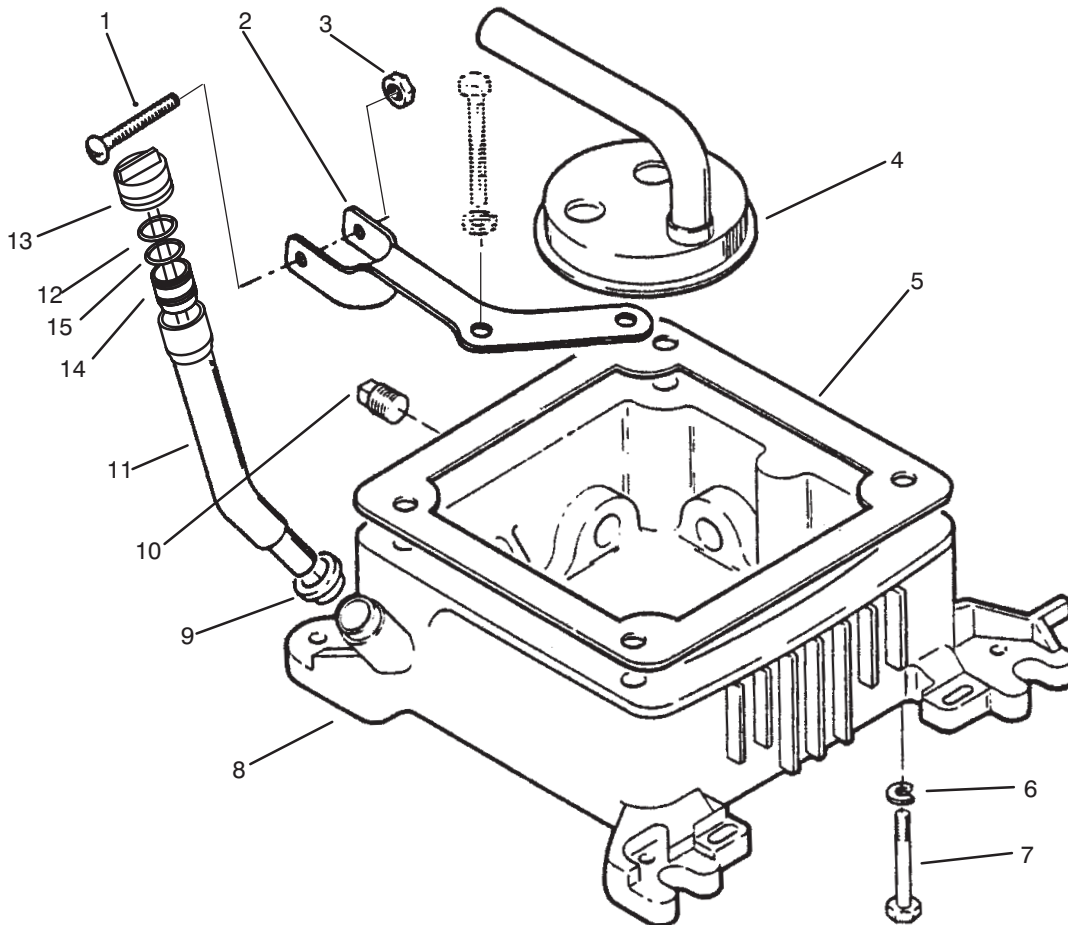


Sheet No.: 404

Cam & Crankshafts

Ref. No.	Part No.	Qty.	Description
1	57-9090	1	Ring-Retaining
2	57-9130	1	Hub-Governor Cup
3	59-0450	1	Cup-Governor
4	57-9640	1	Ball-Governor
5	57-8210	1	Gear-Camshaft
6	57-8230	1	Washer-Thrust
7	59-0400	1	Pin-Center
8	57-9660	1	Key-Woodruff
9	NN10032	1	Camshaft(P216g)
10	92-0911	1	Sleeve-Bearing
11	NN10853	1	Crankshaft(P216g)
12	57-8130	1	Gear-Crankshaft
13	57-8140	1	Washer-Gear
14	57-9710	1	Ring-Retaining
15	57-9660	1	Key-Woodruff

Ref. No.	Part No.	Qty.	Description



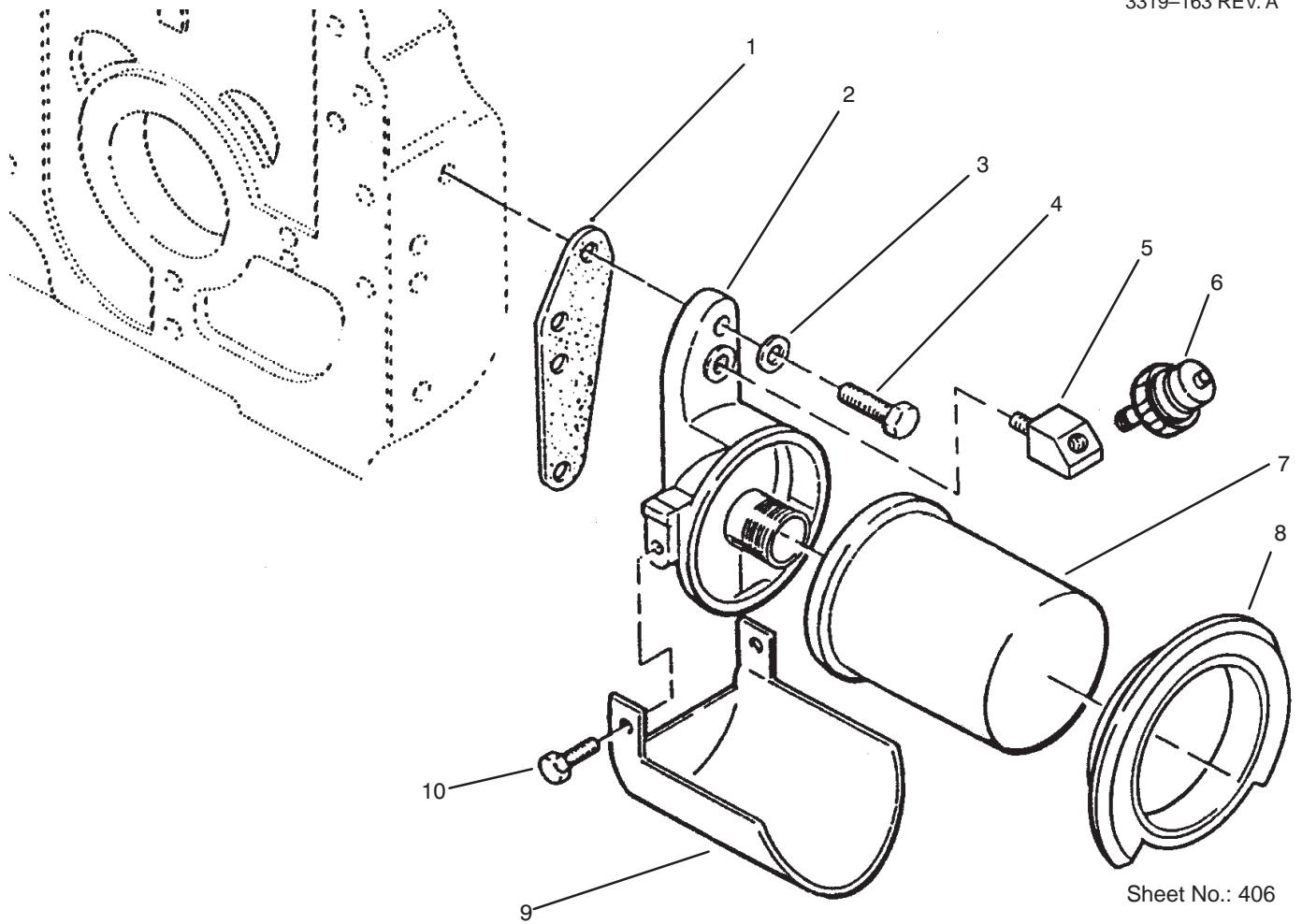
Sheet No.: 405

Oil Fill Tube & Base

Ref. No.	Part No.	Qty.	Description
1	82-1560	1	Screw
2	79-6460	1	Bracket-Fill Tube
3	82-1700	1	Nut-Speed
4	57-8490	1	Cup-Intake
5	57-8090	1	Gasket-Base
6	82-1310	4	Washer-Flat
7	NN10379	4	Screw-HH
8	71-5730	1	Base-Oil
9	71-6170	1	Seal-Oil
10	82-1130	2	Plug
11	NN10854	1	Tube-Fill (P216g) 216G I/10976H
11	NN10448	1	Tube-Fill (P216g) 216G I/10976G
12	57-9610	1	O Ring-Cap, Uppper 216G I/10976G
12	95-2843	1	O Ring-Cap, Uppper 216G I/10976H
13	98-1704	1	Indicator-Oil Level 216G I/10976H
*	NN10159	1	Cap-Indicator Oil Fill 216G I/10976G
14	98-1706	1	Adapter-Oil Fill 216G I/10976H
15	NN10323	1	O Ring-Cap, Lower 216G I/10976H

Ref. No.	Part No.	Qty.	Description

* Not Illustrated

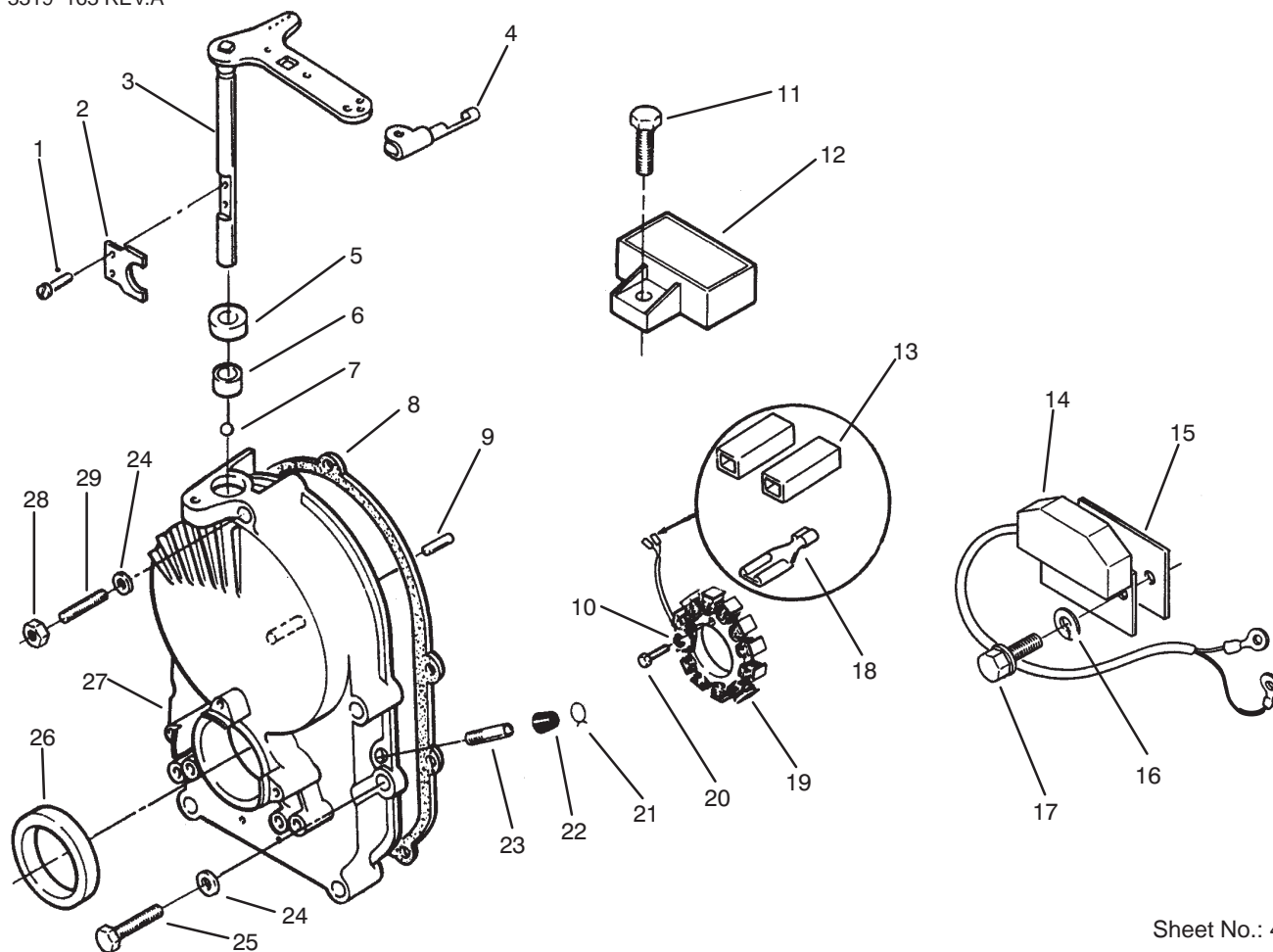


Sheet No.: 406

Oil Filter

Ref. No.	Part No.	Qty.	Description
1	79-6470	1	Gasket-Adapter
2	82-0500	1	Adapter-Oil Filter
3	57-9750	2	Washer-Flat
4	NN10373	2	Screw-HH
5	59-0640	1	Elbow-Street
6	98-1703	1	Switch-Pressure
7	NN10143	1	Filter-Oil
8	82-0680	1	Filter-Gasket Oil
9	NN10894	1	Drain-Oil Filter
10	71-6400	2	Screw-HFW

Ref. No.	Part No.	Qty.	Description

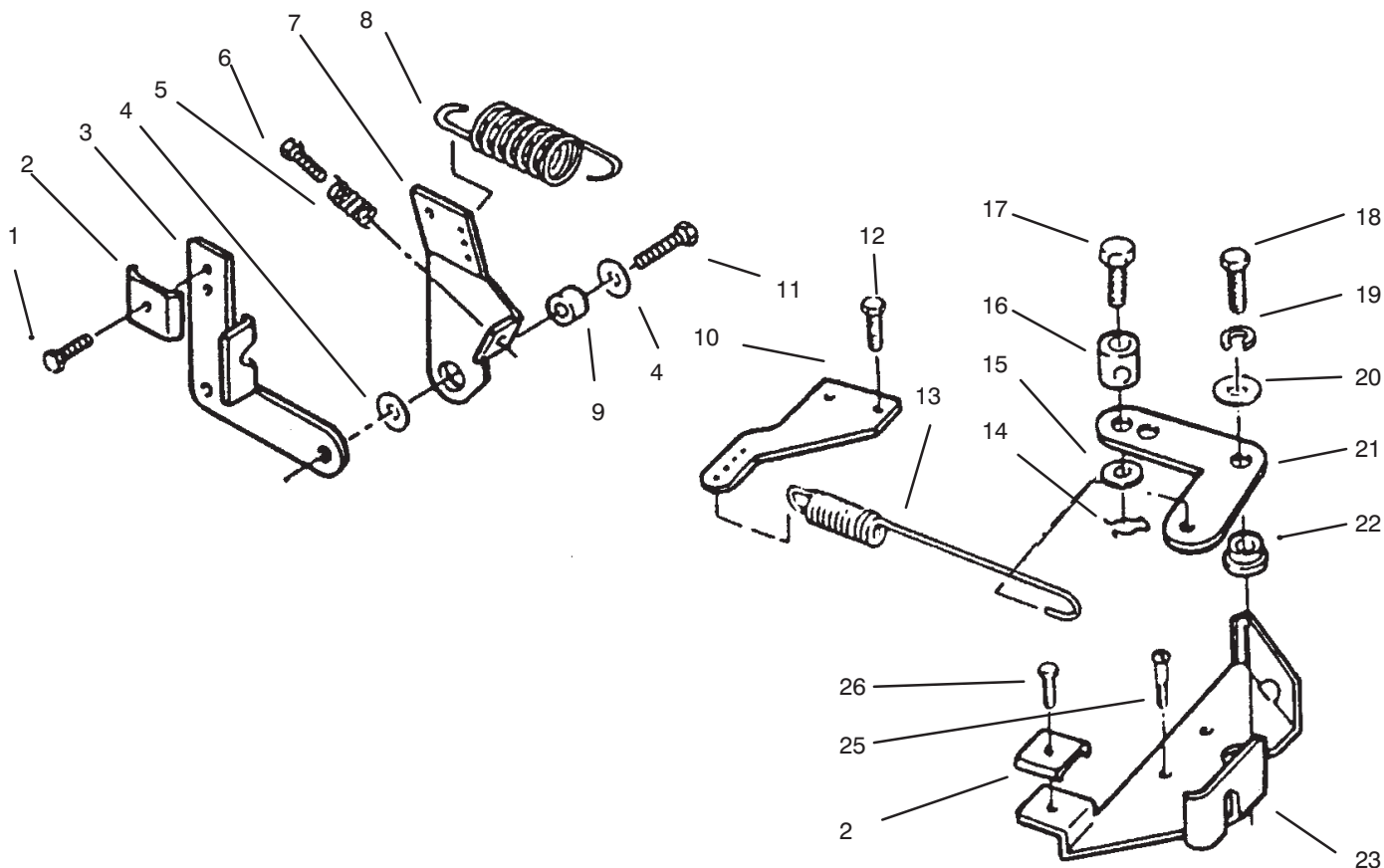


Sheet No.: 407

Gear Case & Ignition Controls

Ref. No.	Part No.	Qty.	Description
1	59-0950	2	Screw-PH
2	59-0420	1	Yoke-Governor
3	NN10826	1	Shaft & Arm Governor
4	94-6680	1	Clip
5	57-9570	1	Seal-Oil
6	57-9650	1	Bearing-Governor Shaft
7	57-9630	1	Bearing-Ball Gov Shaft
8	71-6360	1	Gasket
9	59-0740	1	Pin-Dowel
10	3253-2	3	Washer-Lock #10
11	59-1080	1	Screw-HF
12	57-9430	1	Regulator-Voltage 20 Amp
13	82-1000	2	Body-Term Conn Kit
14	71-6380	1	Control-Ignition
15	71-6410	1	Insulator-Ignition
16	82-1660	2	Washer-Lock
17	71-6400	2	Screw-HFW
18	59-0590	2	Terminal-Stator Leads
19	92-0967	1	Stator
20	82-1500	3	Screw-HH
21	57-9550	1	Clamp-Vacuum Port Cap
22	59-0370	1	Cap-Vacuum Port

Ref. No.	Part No.	Qty.	Description
23	59-0360	1	Tube-Vacuum Port
24	57-9750	5	Washer-Flat
25	NN10545	4	Screw-HH
26	57-9580	1	Seal-Oil
27	NN10825	1	Kit-Gearcase
28	59-1130	1	Nut
29	59-0790	1	Stud-Gear Cover

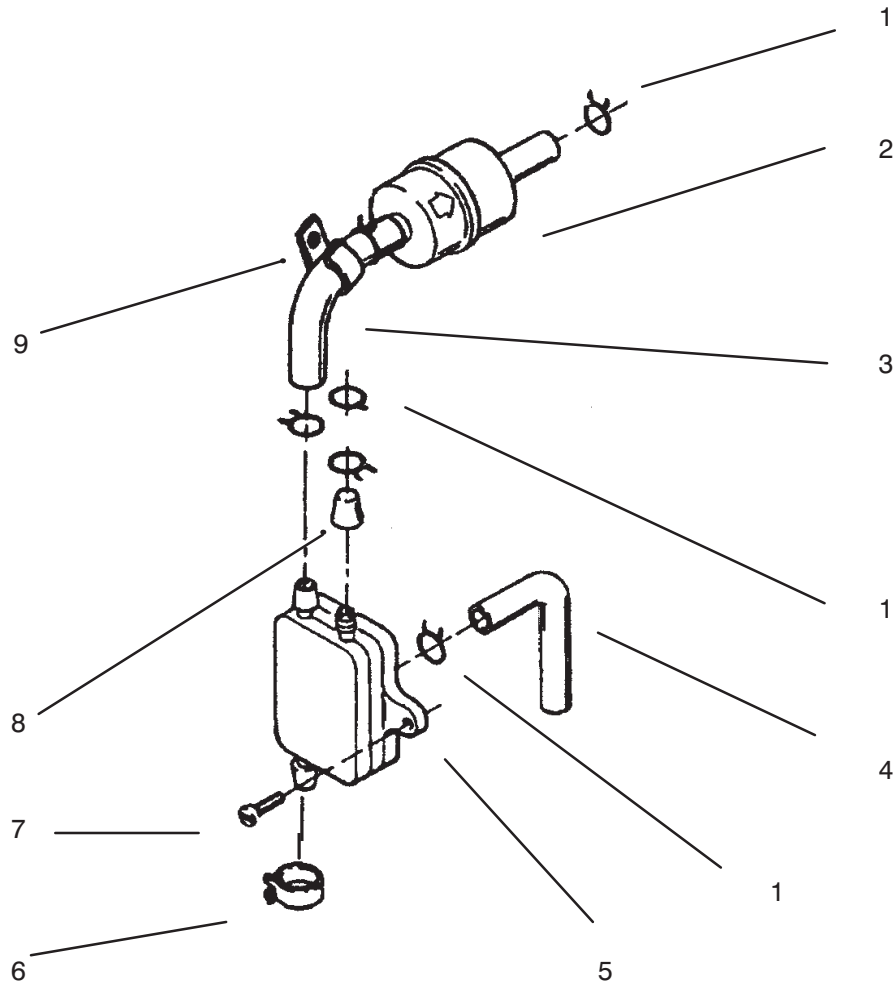


Sheet No.:410

Governor

Ref. No.	Part No.	Qty.	Description
1	72-3900	1	Screw-TAP
2	57-9190	2	Clamp-Cable
3	57-9150	1	Bracket-Cable
4	59-0830	2	Washer-Flat
5	59-0430	1	Spring-Idle Setting
6	59-1030	1	Screw-Tapping Hex Hd
7	92-0922	1	Arm-Governor Control
8	57-9100	1	Spring-Governor
9	57-9120	1	Bushing-Control Arm
10	79-6420	1	Adapter-Governor Arm
11	59-1100	1	Screw-HH
12	59-1050	1	Screw-PH
13	NN10932	1	Spring-Governor
14	59-0720	1	Pin-Cotter
15	201270	1	Washer
16	57-9120	1	Bushing-Control Arm
17	72-3890	1	Screw-HH
18	82-1370	1	Screw-HH
19	82-1620	1	Washer-Lock
20	59-0830	1	Washer-Flat
21	201256	1	Link-Governor Control
22	79-6400	1	Bushing-Governor Cont

Ref. No.	Part No.	Qty.	Description
23	79-6390	1	Bracket-Governor Cont
25	201327	1	Screw-TAP
26	59-1000	3	Screw



Sheet No.: 413

Fuel Filter & Pump

Ref. No.	Part No.	Qty.	Description
1	82-1080	6	Clamp-Hose .50" Dia
2	71-5960	1	Filter-Fuel
3	NN10790	1	Line-Fuel 12"
4	NN10302	1	Line-Fuel 7"
5	57-9080	1	Pump-Fuel
6	950154	2	Clamp-Corbin
7	59-1050	2	Screw-PH
8	59-0370	1	Cap-Vacuum Port
9	71-6220	1	Clip-Wire

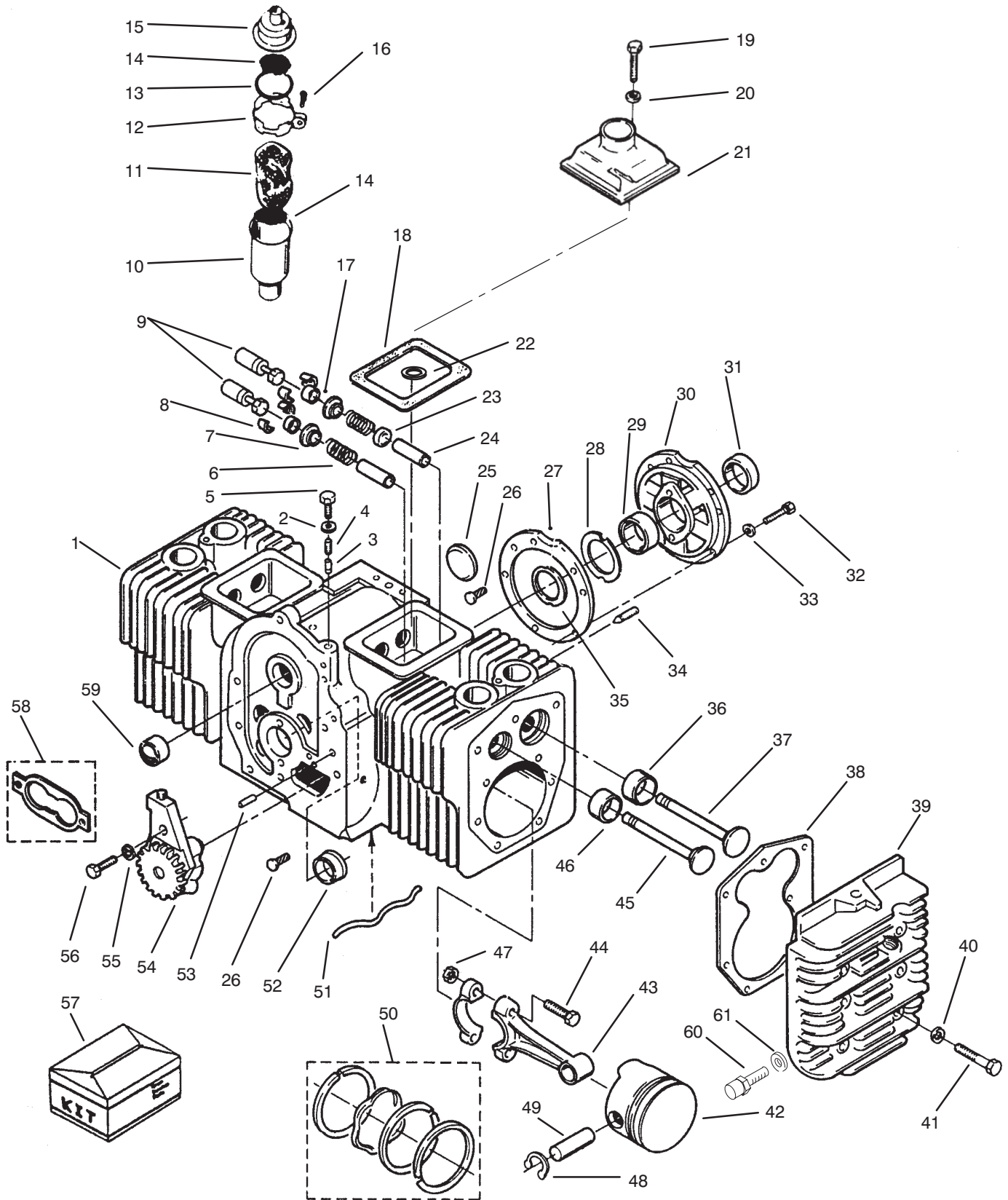
Ref. No.	Part No.	Qty.	Description

Part Identified in illustration but not in part list are not used on this model

3319-163 REV. A

This Page Intentionally Left Blank

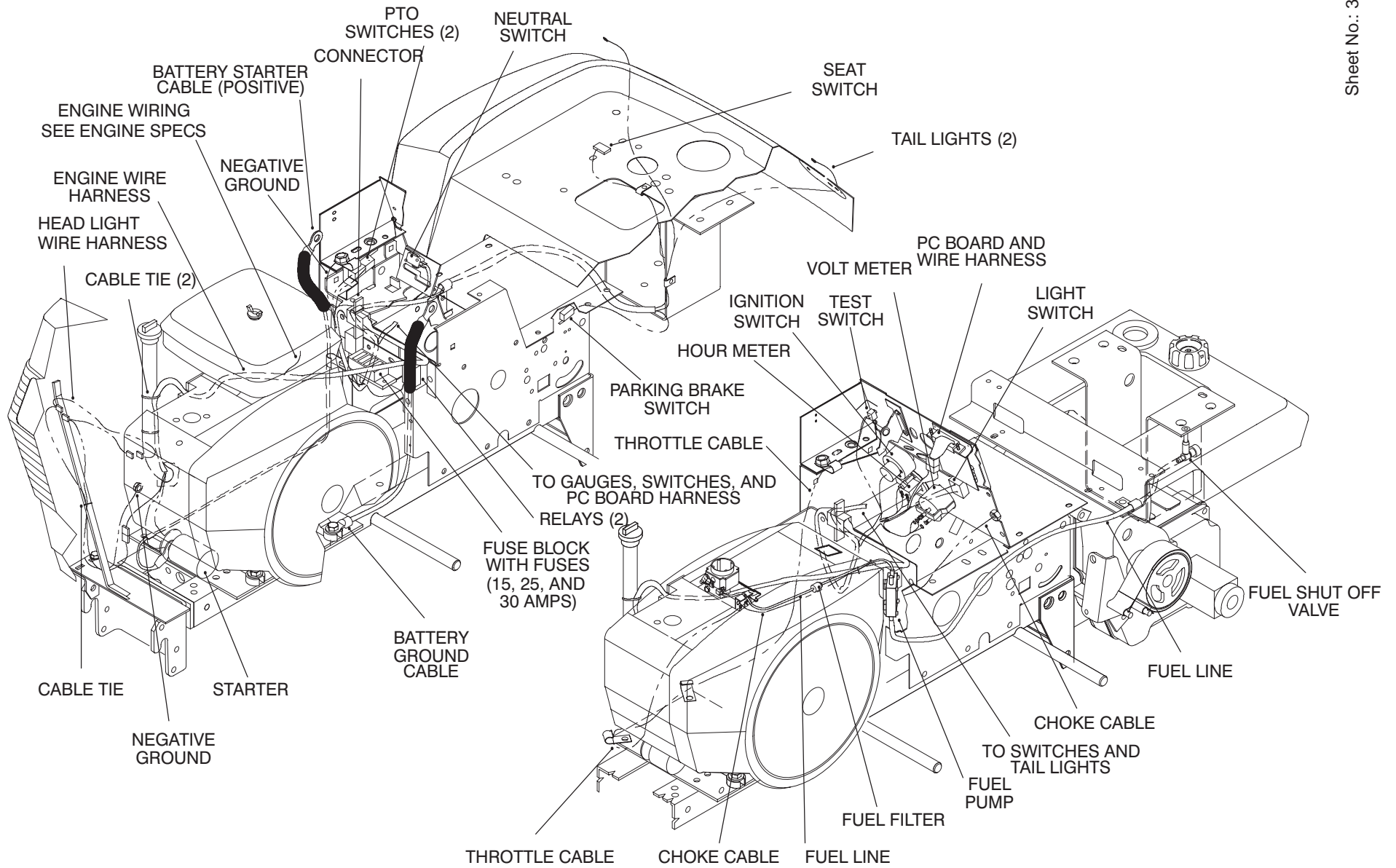
Engine Cylinder Block



Engine Cylinder Block

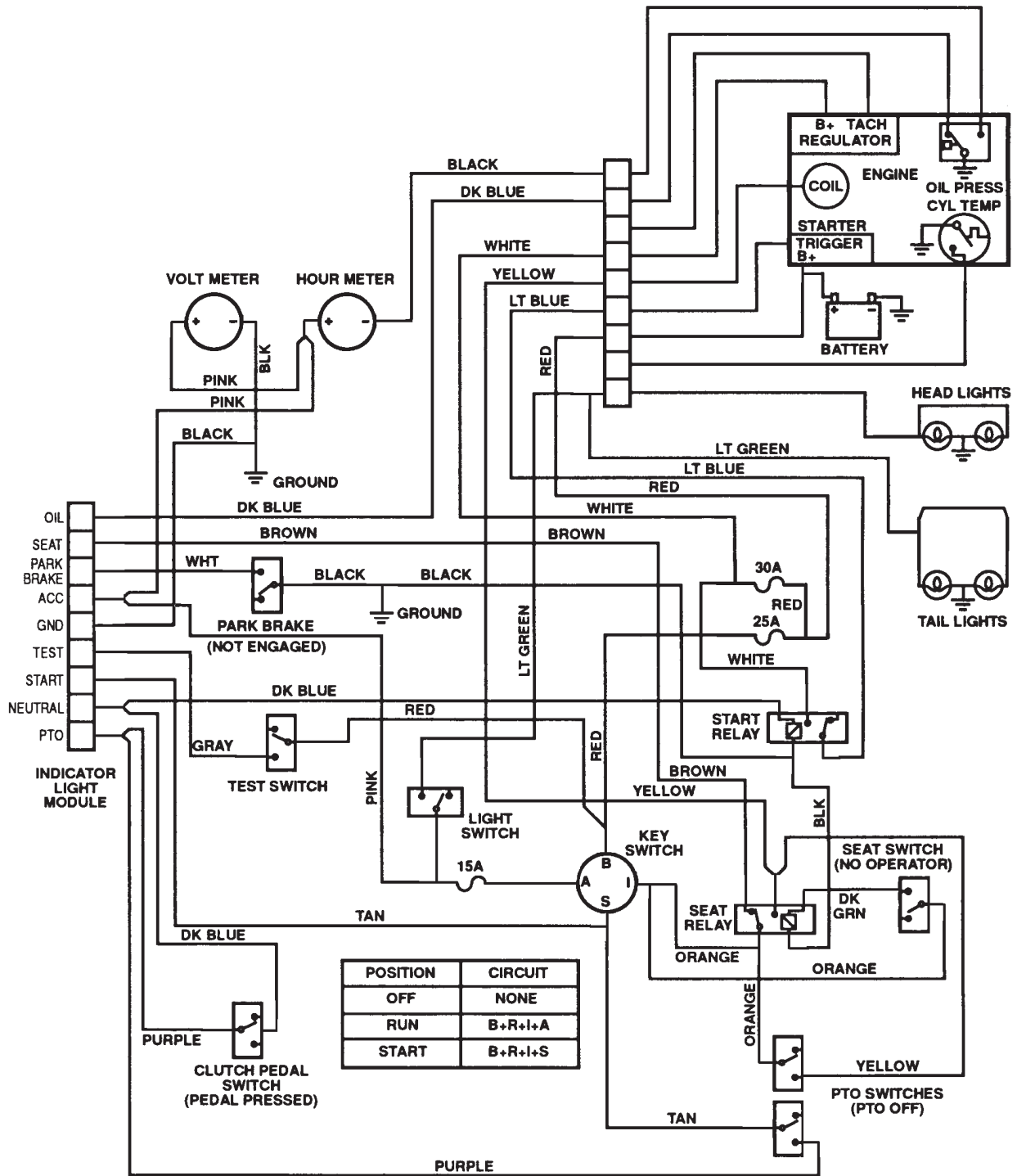
Ref. No.	Part No.	Qty.	Description	Ref. No.	Part No.	Qty.	Description
1	NN10850	1	Block-Cyl.(Short)(P2 6g)	43	NN10128	2	Rod-Conn
2	57-9760	1	Washer-Flat	44	95-7697	4	Bolt-Connecting Rod
3	57-8470	1	Plunger-Bypass Valve	45	71-5780	2	Spring-Clutch
4	59-0280	1	Spring-Bypass Valve	46	59-0100	2	Insert-Valve Seat Exh
5	59-0910	1	Screw-HH	46	59-0110	2	.002" Oversize
6	71-5790	4	Spring-Valve	46	59-0120	2	.005" Oversize
7	71-5800	4	Washer-Valve Spring	46	59-0130	2	.010" Oversize
8	NN10082	8	Lock-Valve Spring	46	59-0140	2	.025" Oversize
9	57-8450	4	Tappet-Valve STD	47	95-7698	4	Nut
10	82-0540	1	Tube-Breather	48	57-9720	4	Ring-Retaining
11	57-8580	1	Baffle-Breather Tube	49	71-6310	2	Pin-Piston
12	82-0530	1	Clamp-Tube	50	92-0905	2	Kit-Ring Piston STD
13	82-0570	1	O-Ring-Cap	50	92-0906	2	.005" Oversize
14	82-0560	2	Screen-Tube	50	92-0907	2	.010" Oversize
15	82-0550	1	Cap & Valve-Breather	50	92-0908	2	.020" Oversize
16	82-1480	1	Screw-PH	50	92-0909	2	.030" Oversize
17	71-5830	4	Cap-Valve	51	59-0290	1	Tube-Oil
18	57-8280	2	Gasket-Cover	52	57-8020	1	Bearing-Crankshaft
19	NN10370	2	Screw-HH	52	57-8030	1	.010" Undersize
20	57-9740	2	Washer-Flat	52	57-9360	1	.002" Undersize
21	NN10821	1	Cover-Valve	52	57-9800	1	.020" Undersize
22	59-0820	1	Washer-Flat	52	59-0010	1	.030" Undersize
23	71-6180	2	Seal-Valve	53	59-0750	2	Pin Align
24	71-6250	2	Guide-Valve	54	57-8480	1	Pump-Oil
24	71-6260	2	Guide-Valve	55	82-1340	2	Washer
25	57-9690	1	Plug-Welch	56	82-1370	2	Screw-HH
26	59-0730	4	Pin-Drive	57	71-6290	1	Kit-Gasket Complete
27	57-8010	1	Gasket-Bearing Plate	58	57-8460	1	Kit-Gasket Oil Pump
28	57-8170	A/R	Shim-Crankshaft .005"	59	57-8000	2	Bearing-Camshaft
29	57-8050	1	Bearing-Crankshaft Rear	60	NN10274	1	Switch-High Temp.
29	57-8060	1	.010" Undersize	61	NN10924	1	Washer-Lock
29	59-0020	1	.002" Undersize				
29	59-0030	1	.020" Undersize				
29	59-0040	1	.030" Undersize				
30	82-0020	1	Plate-Bearing				
31	57-9590	1	Seal-Oil				
32	59-0880	5	Screw-HF				
33	3253-5	5	Washer-Lock				
33	82-1310	5	Washer-Flat				
34	3247-4	2	Screw-HS				
35	57-8160	2	Washer-Thrust				
36	59-0050	2	Insert-Valve Seat Intake				
36	59-0080	2	.010" Oversize				
37	71-5770	2	Valve-Intake				
38	57-8330	2	Gasket-Head				
39	59-0180	1	Head-Cylinder RH				
39	71-5810	1	Head-Cylinder LH				
40	57-9770	18	Washer-Flat				
41	59-0900	18	Screw-HH				
42	82-1800	2	Piston STD INC 48-49				
42	92-0902	2	.010" Oversize				
42	92-0903	2	.020" Oversize				
42	92-0904	2	.030" Oversize				
43	NN10125	2	Rod-Conn				
43	NN10126	2	Rod-Conn				
43	NN10127	2	Rod-Conn				

Wire Harness & Cable Routing

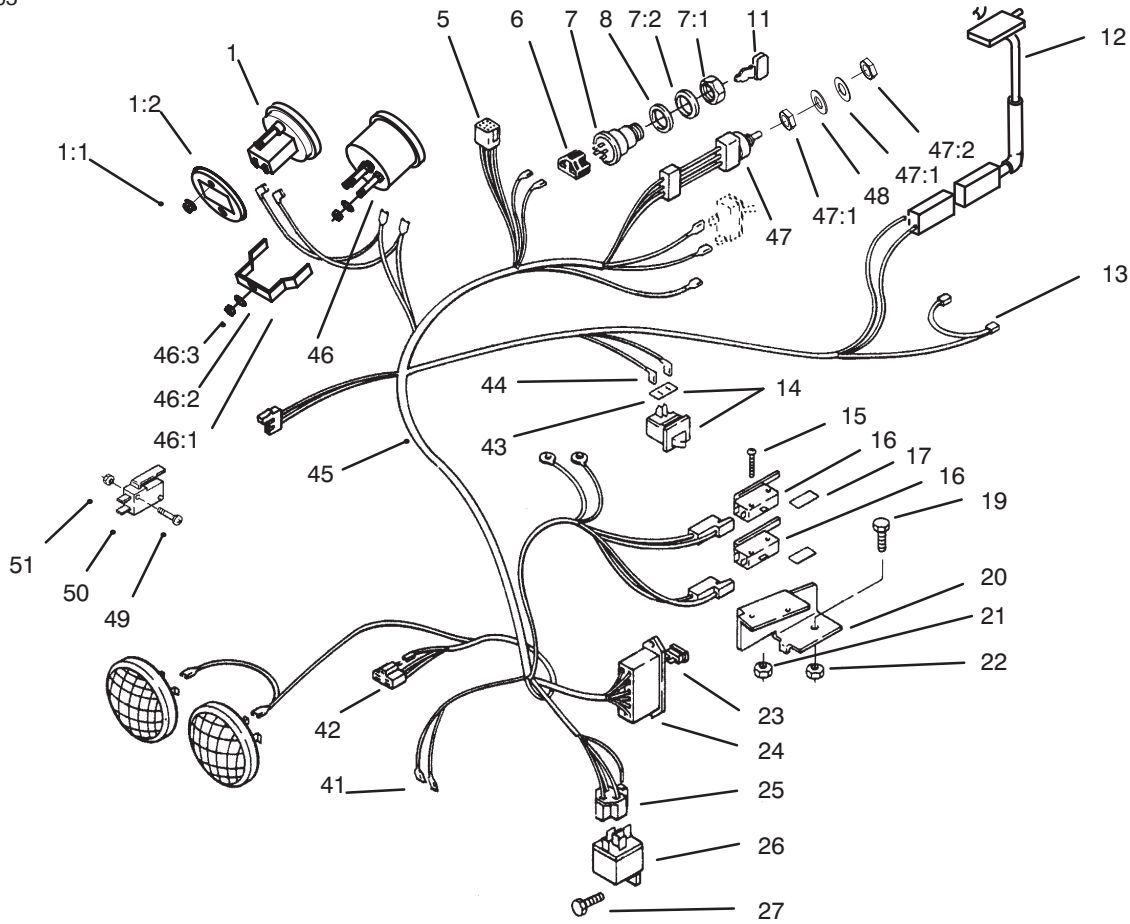


416-H WIRE HARNESS, CABLE, AND TUBE ROUTING TWIN CYLINDER

Electric Schematic



POSITION	CIRCUIT
OFF	NONE
RUN	B+R+I+A
START	B+R+I+S

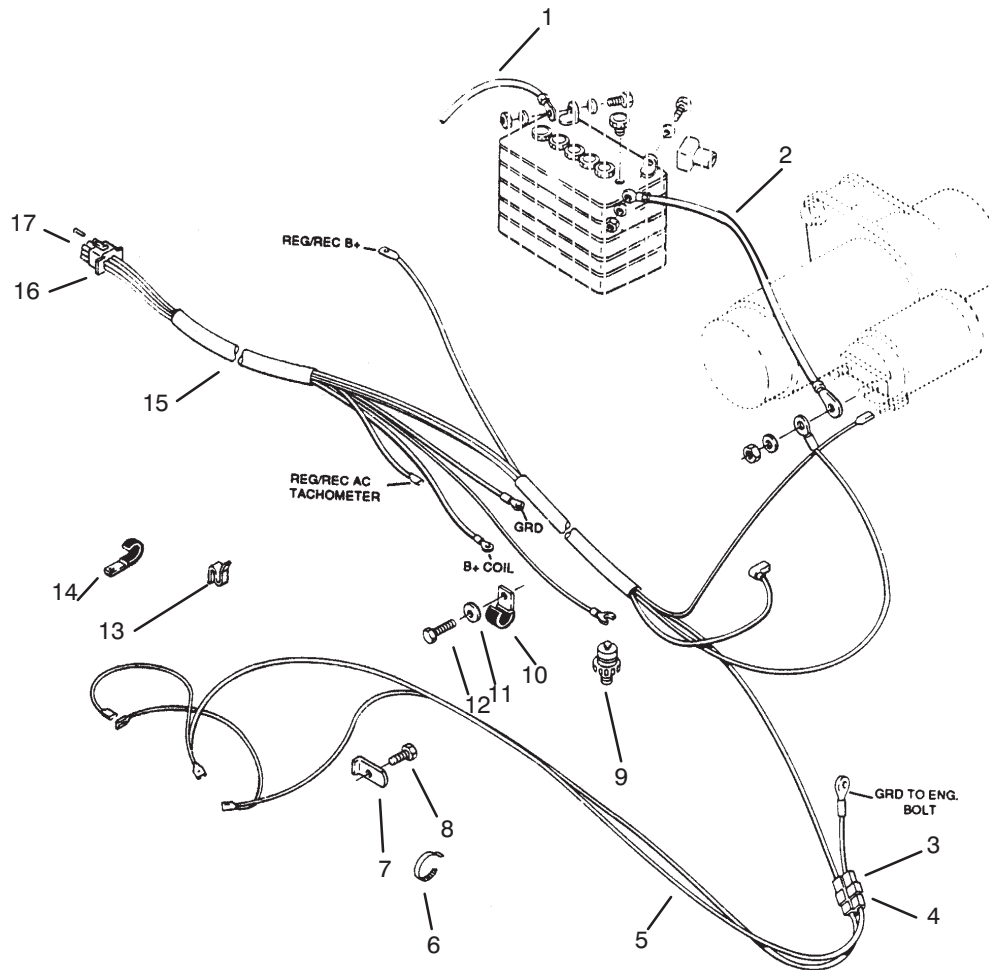


Sheet No.:

416-H Wire Harness Attachment & Component's

Ref. No.	Part No.	Qty.	Description
1	94-3723	1	Meter - Hour
1:1	32149-9	1	Nut - Lock
1:2	94-1849	1	Retainer - Cup
5	102651	8	Terminal - Female
6	104926	1	Switch - Connector
7	111216	1	Switch - Ignition
7:1	101884	1	Nut - Special
7:2	920104	1	Washer - IntL. T
8	9202624	1	Washer - Special
11	62-7770	1	Key - Ignition,
12	38-1420	1	Switch - Seat
13	6921	1	Terminal
14	103480	1	Switch - Interlock, (Incl. Ref. #43)
15	910478	2	Screw
16	111332	3	Switch - PTO
17	111642	2	Barrier - Switch
19	926671	1	Bolt
20	115411	1	Support - Switch
21	915732	2	Nut
22	9155732	2	Nut
23	109355	1	Fuse 15 Amp
*	109102	1	Fuse 25 Amp
*	NN10277	1	Fuse 30 Amp
24	120930	1	Holder - Fuse
25	518105	1	Terminal
26	116397	1	Relay
27	960152	2	Bolt - Whizlock

Ref. No.	Part No.	Qty.	Description
42	112185	1	Body - Connector
43	110502	1	Shield - Dirt
44	518077	2	Terminal
45	79-3620	1	Wire Harness (Incl. Ref. # 5,6,13, 24, 25 42 &45)
46	79-0060	1	Meter - Volt
46:1	78-0080	1	Bracket - Mounting
46:2	3255-24	1	Washer - Lock
46:3	3217-27	1	Nut
47	102138	1	Switch - Lights
47:1	3255-25	1	Washer - Lock
47:2	321-27	1	Nut
48	9202594	1	Washer
49	910948	2	Screw
50	111332	1	Switch-Parking
51	915732	2	Nut

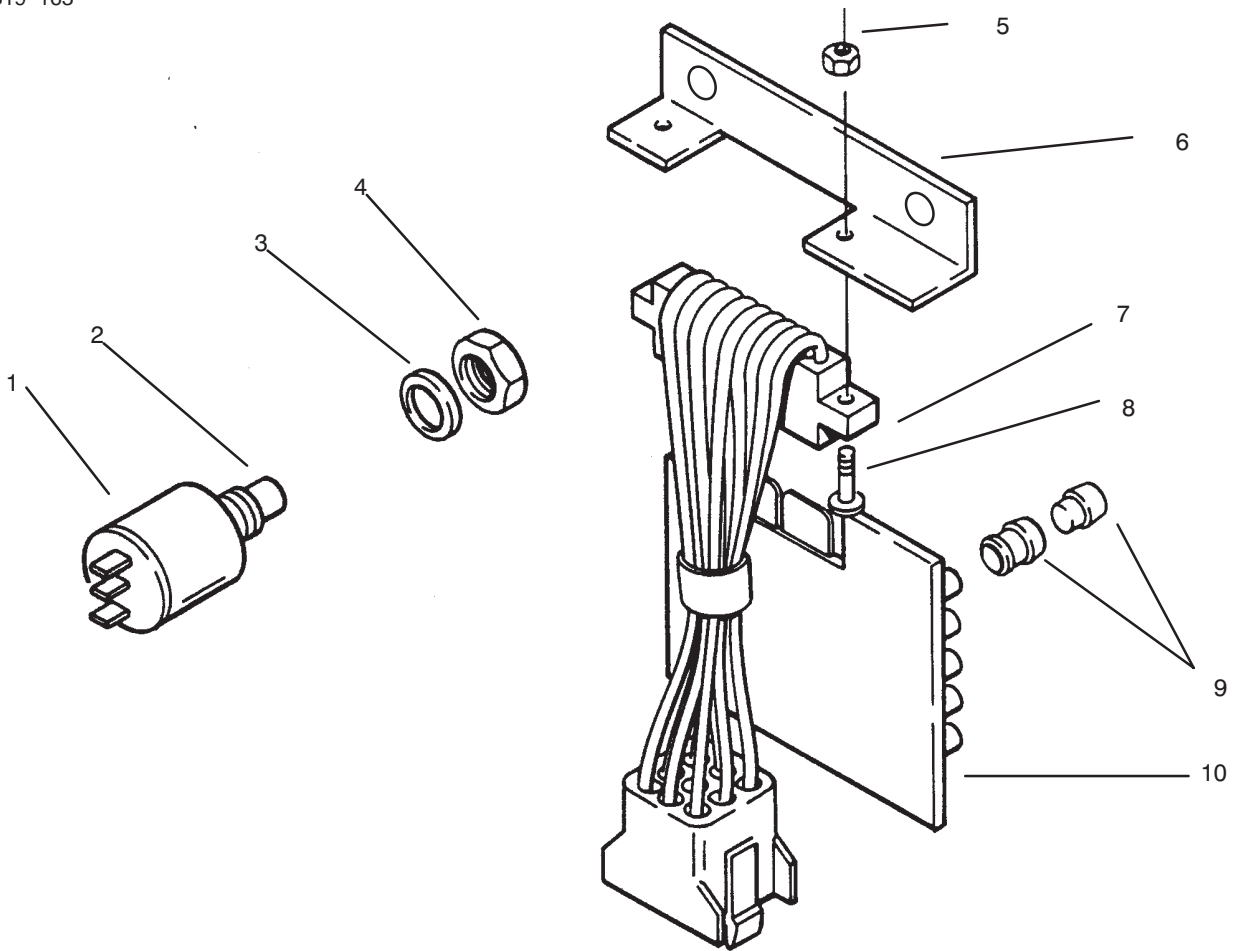


Sheet No.:
C-1673

Engine Wire Harness

Ref. No.	Part No.	Qty.	Description
1		1	Cable – Battery–
2		1	Cable – Battery (+)
3	NN10278	1	Connector
4	109357	1	Connector
5	114052	1	Harness – Headlight
6	100571	1	Tie – Cable
7	109459	2	Clamp
8	926671	2	Bolt – Hex
9	94-1845	1	Switch – Low Oil
10	NN10348	1	Clip
11	NN10425	1	Washer – Lock
12	82-1540	1	Screw
13	3023	1	Clip – Small
14	8830	1	Clip
15	94-1846	1	Harness–Eng Wiring
16	NN10281	1	Connector
17	NN10279	1	Contact – Socket

Ref. No.	Part No.	Qty.	Description



Sheet No.:

PC Board & Test Switch

Ref. No.	Part No.	Qty.	Description
1	116796	1	Test Switch
2	117217	1	Switch – Button (Incl. Ref. #2-4)
3	111767	1	Washer
4	111359	4	Nut – Hex
5	915732	2	Nut – Lock
6	112506	1	Bracket
7	116723	1	Harness – Wiring
8	9107562	2	Screw
9	111343	5	Bushing Assembly & Indicator Lens
10	114825	1	PC Board w/Lights

Ref. No.	Part No.	Qty.	Description

Toro Part Number Index

Part No.	Page No.	Ref. No.	Qty.	Description
1121	7	14	1	Key—Square
1278	2	9	3	Washer—Shim
1278	8	35	1	Washer—Shim
1278	15	14	4	Washer—Shim
1518	21	21	1	Bearing—Needle
1532	21	22	2	Bearing—Needle
1538	21	12	1	Bearing—Needle
2844	14	20	1	Washer—Flat
3023	10	27	2	Clip
3765	9	21	1	Washer—Flat
3765	12	8	1	Washer—Flat
5108	15	3:3	2	Valve—Tire Tubeless
5108	15	10:3	2	Valve—Tire Tubeless
5210	2	17	14	Washer—Shim
5210	15	15	2	Washer—Shim
5618	2	30	1	Ring—Retaining
5618	16	11	2	Ring—Retaining
5666	12	4	2	Bushing—Flanged
5979	1	17	2	Bushing
5983	6	6	1	Bushing
5983	8	1	3	Bushing
5991	14	14	1	Fitting—Filter
6216	2	26	1	Pin—Pivot
6229	7	17	1	Bushing—Flanged
6397	2	8	1	Bushing
6449	20	12	2	Seal—Oil
6472	2	1	1	Bearing—Pillow
6658	11	13	1	Race—Bearing
6659	11	12	2	Retainer—Plate
6662	11	16	1	Bearing—Needle
6663	11	15	1	Seal—Oil
6739	7	5	1	Trunnion
7443	11	9	1	Pulley—Engine
7456	4	10	4	Clamp
7879	9	20	1	Bushing—Flanged
7896	2	12	1	Washer—Bowed
7956	21	16	1	Washer—Thrust
8616	16	20	2	Spring—Compression
8830	7	12	2	Retainer—"J"
8830	13	13	2	Retainer—"J"
8830	16	28	1	Retainer—"J"
8830	18	11	1	Retainer—"J"
8830	19	21	1	Retainer—"J"
8830	21	9	1	Retainer—"J"
9038	16	12	1	Grip
9416	20	11	2	Bearing—Needle
9547	21	23	1	Washer—Thrust
100304	8	16	2	Bearing
100305	14	4	2	Washer—Friction
100309	14	6	1	Bushing—Cam Pivot
100365	14	3	2	Washer—Spring Disc
100656	8	22	1	Bearing—Cam Return
101017	16	15	1	Lock—Hitch
101623	20	6	8	Gear—Pinion
101707	16	23	1	Lock—Attachment
101750	16	19	1	Rod—Pivot
101751	16	27	1	Rod—Lock
101757	6	24	1	Spacer
101853	8	38	1	Spring—Compression
101884	5	18:1	2	Nut—Hex
101889	20	4	2	Gear—Axle
102025	9	3	1	Spacer

*Not Illustrated

Toro Part Number Index (cont.)

Part No.	Page No.	Ref. No.	Qty.	Description
102138	5	17	1	Switch—Light
102628	6	27	1	Fitting—Tube
102628	14	28	1	Fitting—Tube
102872	11	2	1	Shaft—PTO
102881	1	3	2	Headlamp
102950	5	17:	1	Washer
103125	8	29	1	Spring—Extension
103125	12	7	1	Spring—Extension
103995	14	49	1	Washer
104047	18	1:3	1	Bushing
104048	18	1:2	1	Valve ASM
104841	6	16	1	Spring
104859	12	16	1	Spacer—Flanged
105061	20	7	1	Gear—Differential
105202	10	30	2	Base—Light
105269	16	5	1	Pin—Hitch
105316	16	14	2	Cap—Rod
105453	11	10	1	Key
105503	10	21	2	Bushing
105524	10	20	2	Bracket—Pivot
105797	1	18	2	Ring—Retaining
105797	16	18	8	Ring—Retaining
105876	20	5	2	Ring—Retaining
106234	18	1	1	Tank ASM—Fuel
106235	18	1:1	1	Tank
106267	6	18	1	Grommet
106269	7	9	2	Bearing—Flange
106448	14	40	1	Nipple—Trans Filler
106522	7	4	1	Chain—Lift
106634	16	8	1	Pin—Attachment
106661	14	9	1	Cam
106695	11	20	1	Ring—Retaining
106719	14	17	1	Drum—Brake
106826	14	51	2	Washer—Thrust
106948	17	8	1	Tray—Battery
107069	3	16	4	Nut—Panel
107069	4	5	6	Nut—Panel
107374	20	8	4	Washer—Flat
107938	9	25	1	Spring—Extension
108312	20	15	1	Gasket—Transaxle
108316	14	35	1	Pulley—Hydro
108319	21	2	1	Gasket—Transmission
108323	14	15	1	Base—Filter
108326	14	2	1	Spacer—Pivot
108327	14	39	1	Spacer—Pivot
108333	14	5	1	Plate—Cam
108357	21	13	1	Seal—Oil
108361	20	13	1	Axle—Rear
108362	20	18	1	Axle—Rear
108363	20	10	2	Pin—Locating
108364	21	25	1	Fitting—Hyd
108365	6	1	2	Fitting—Tube
108365	14	31	2	Fitting—Tube
108366	21	4	1	Spacer—Gear
108393	14	36	1	Fan—Hydro
108457	4	14	1	Nut—Push
108496	8	26	1	Pivot
108680	8	30	1	Spring—Compression
108716	9	16	1	Plate—Neutral Cam
108881	14	7	2	Nut—Hex
108881	16	4	6	Nut—Hex
108881	20	2	4	Nut—Hex

*Not Illustrated

Toro Part Number Index (cont.)

Part No.	Page No.	Ref. No.	Qty.	Description
108904	8	18	1	Rod—Control
109045	10	30:1	2	Lamp—Wedge
109102	19	9:2	1	Fuse—25 Amp
109189	2	16	1	Bearing—Flange
109262	2	13	2	Washer
109355	19	9:2	1	Fuse—15 Amp
109356	14	26	1	Bushing—Pivot
109370	21	17	1	Shaft—Brake
109371	14	18	1	Brake Band
109459	1	5	2	Clamp—Headlight
109494	1	2	1	Bezel—Headlight
109495	1	1	1	Bezel—Headlight
109500	15	10:6	2	Fitting—Grease
109530	5	15	1	Nut
109703	21	24	1	ASM—Gear
109742	21	20	1	Gear—20t
109751	21	5	1	Gear—20t
109752	21	19	1	Gear—46t
109842	11	5	1	Bearing—Ball
109989	10	6	4	Spacer
110189	8	17	2	Rod End ASM
110513	15	10:2	4	Bearing—Wheel
110656	12	19	1	Trunnion
110669	12	17	1	Plate—PTO
111052	12	23	1	Rod—Clutch
111071	10	12	2	Bumper—Rubber
111196	20	3	2	Cap—End
111199	20	1	2	Bearing—Ball
111216	5	18	1	Switch—Ignition
111217	21	26	1	Tube—Suction
111314	11	27	1	Lock Pin ASM
111332	9	42	1	Switch—Interlock
111332	19	4	2	Switch—Interlock
111343	5	9	5	Lens & Bushing ASM
111359	5	5:1	1	Nut—Hex
111383	8	33	1	Collar w/Set Screw
111392	3	15	1	J—Clip
111516	15	3:1	2	Wheel
111757	1	7	1	Edging
111767	5	5:2	1	Washer—Lock
111926	3	36	1	Decal—Electric
111951	15	12	2	Cap—Hub
111952	15	13	2	Washer
111960	3	33	1	Decal—PTO Clutch
112358	1	28	1	Hood & Grill
112415	3	6	1	Stop—PTO
112506	3	13	1	Bracket
112564	10	32	2	Lens—Light
112637	23	4	1	ASM—Pump
112641	23	9	1	Cover ASM
112652	23	30	1	Shield—Grass
112653	23	31	1	Ring—Retaining
112791	9	31	1	Pulley—Idler
113010	17	10	1	Hold Down
113107	11	26	1	Clevis
113108	11	1	1	Rod—Housing
113136	23	16	1	Race—Pump
113179	5	17:	1	Nut
113443	2	14	1	Tube—Shaft
113925	17	1	1	Cable—40" Lg
113969	17	9	2	Hook—Retainer
114000	6	4	1	Valve ASM — Hyd

*Not Illustrated

Toro Part Number Index (cont.)

Part No.	Page No.	Ref. No.	Qty.	Description
114052	1	4	1	Wire Harness
114210	17	6	1	Cable-24" Lg
114264	10	7	1	Adjuster-Seat
114265	10	5	1	Slide-Seat
114343	10	18	1	Spring-Gas
114344	10	16	2	Spacer
114636	13	8	1	Nipple
114720	17	7	1	Tube-Battery Drain
114763	13	10	1	Nipple
114764	13	9	1	Elbow-90 DEG
114823	9	22	1	Washer-Curved Spring
114825	5	20	1	Board-PC
114888	13	1	6	Screw
114895	9	29	1	Belt-Hydro Drive
114951	5	13	1	Control-Choke
115230	8	41	1	Switch-Clutch
115392	5	21	1	Control-Throttle
115411	19	2	1	Bracket-Switch
115877	17	5	1	Battery
116000	4	8	4	Screw-CARR
116302	6	8	1	Arm-Control
116321	8	5	1	Arm-Control
116324	8	6	1	Rod & Balljoint ASM
116397	19	17	2	Relay
116407	8	13	1	Rod End
116445	3	38	1	Decal-Parking Brake
116471	13	5	1	Muffler
116744	15	3:2	2	Tire
116745	1	19	1	Rod-Pivot
116746	1	20	1	Bracket-Grill
116747	1	13	1	Bracket-Grill
116796	5	5	1	Switch-Button
117127	15	10:4	2	Tire
117217	5	5:3	1	Button-Switch
117343	3	10	2	Latch-Hood
117344	1	10	2	Handle-Latch
117371	3	19	4	Screw-CARR
117377	5	4	1	Harness-P C Board
117432	1	9	4	Poprivet
117432	3	11	4	Poprivet
117930	16	17	1	Latch ASM-Mid
118530	13	29	1	Name Plate-Toro Logo
118540	13	30	1	Decal-Power Plus 16
118660	8	7	1	Guide-Control
118860	9	6	1	Knob-Parking Brake
119340	6	22	1	Cylinder-Hydraulic
120930	19	9:1	1	Fuse Holder
121100	7	15	1	Lift Arm ASM
201256	33	21	1	Link-Governor Control
201270	33	15	1	Washer
201327	33	25	1	Screw-TAP
519337	18	16	1	Clip
910865	10	3	4	Screw
911423	20	9	4	Screw-HH
933135	9	5	1	Pin-Spirol
933198	6	7	1	Pin-Spirol
933198	8	4	1	Pin-Spirol
933274	11	25	1	Pin-Spirol
937089	14	48	2	Key-Woodruff
937099	21	18	1	Key-Woodruff
937108	14	47	2	Key-Woodruff
950154	36	6	2	Clamp-Corbin

*Not Illustrated

Toro Part Number Index (cont.)

Part No.	Page No.	Ref. No.	Qty.	Description
9080026	11	14	4	Screw—HH
9080026	14	50	1	Screw—HH
9080196	14	8	1	Screw—HH
9080356	21	7	1	Screw—HH
9080406	21	10	2	Screw—HH
9104784	19	5	2	Screw
9107562	5	3	2	Screw—Phcr
9107622	3	8	2	Screw—Phcr
9107922	5	7	2	Screw—Phcr
9107944	19	8	2	Screw—Phcr
9108372	3	1	8	Screw—Phcr
9108372	4	7	2	Screw—Phcr
9109484	8	42	2	Screw—Phcr
9109484	9	41	2	Screw—Phcr
9114584	8	21	1	Screw—HH
9151126	3	20	4	Nut
9157324	5	8	2	Nut—Lock
9157324	8	40	2	Nut—Lock
9157324	9	43	2	Nut—Lock
9157324	19	1	2	Nut—Lock
9157404	5	1	2	Nut
9157404	19	12	2	Nut
9159604	3	14	2	Nut
9201504	3	9	2	Washer—Lock
9201604	5	18:2	1	Washer—Lock
9202324	6	23	1	Washer—10 GA
9202414	9	4	1	Washer—Flat
9202594	5	16	1	Washer
9202624	5	19	1	Washer—Flat
9266714	1	6	2	Screw—HWHTF
9266714	19	6	1	Screw—HWHTF
9266944	3	7	13	Screw—HH
9266944	4	15	1	Screw—HH
9266944	8	27	1	Screw—HH
9266944	10	9	10	Screw—HH
9266944	19	20	5	Screw—HH
9266974	18	8	2	Screw—HH
9321204	6	3	1	Pin—Clevis
9329974	6	20	1	Pin—Clevis
9335044	8	28	1	Hairpin
9335054	7	1	2	Hairpin
9335054	12	21	1	Hairpin
9335054	16	10	1	Hairpin
9335064	11	23	1	Hairpin
9335074	7	16	2	Hairpin
9791204	16	6	2	Spacer
NN10032	27	9	1	Camshaft(P216g)
NN10082	38	8	8	Lock—Valve Spring
NN10125	38	43	2	Rod—Conn
NN10126	38	43	2	Rod—Conn
NN10127	38	43	2	Rod—Conn
NN10128	38	43	2	Rod—Conn
NN10143	29	7	1	Filter—Oil
NN10176	32	2	1	Wrapper—Element
NN10187	32	17	1	Tube—Air Intake
NN10190	32	19	1	Gasket
NN10233	35	11	1	Lever—Choke
NN10274	38	60	1	Switch—High Temp.
NN10277	19	9:2	1	Fuse—30 Amp
NN10302	36	4	1	Line—Fuel 7"
NN10306	34	18	1	Hose—Fuel 30"
NN10362	34	4	1	Washer—Flat

*Not Illustrated

Toro Part Number Index (cont.)

Part No.	Page No.	Ref. No.	Qty.	Description
NN10370	38	19	2	Screw-HH
NN10373	29	4	2	Screw-HH
NN10375	34	12	4	Screw-HH
NN10379	28	7	4	Screw-HH
NN10390	32	13	1	Screw-HFW
NN10545	30	25	4	Screw-HH
NN10545	31	12	1	Screw-HH
NN10545	34	15	2	Screw-HH
NN10774	32	1	1	Element-Air Cleaner
NN10790	36	3	1	Line-Fuel 12"
NN10821	38	21	1	Cover-Valve
NN10825	30	27	1	Kit-Gearcase
NN10826	30	3	1	Shaft & Arm Governor
NN10830	35	7	1	Plug-Cap
NN10832	25	22	1	Bracket-Governor Adjust
NN10850	38	1	1	Block-Cyl.(Short)(P216g)
NN10853	27	11	1	Crankshaft(P216g)
NN10854	28	11	1	Tube-Fill (P216g)
NN10894	29	9	1	Drain-Oil Filter
NN10924	38	61	1	Washer-Lock
NN10929	24	12	1	Kit-Mounting Bracket
NN10930	24	9	1	Cap-Starter Solenoid
NN10932	33	13	1	Spring-Governor
28-8080	17	2	1	Boot-Terminal
38-1420	10	26	1	Switch-Seat
49-2040	13	4	3	Screw-HH
55-3570	18	7	1	Cap-Fuel
56-2800	23	1	1	Screw-hh
56-2810	23	2	1	Bearing-Ball
56-2820	23	3	2	Seal-Oil
56-2850	23	6	1	Ring-Seal
56-2860	23	7	1	Plate-Pump
56-2870	23	8	1	Ring-Seal
56-2880	23	10	2	Button
56-2890	23	11	1	Pin-Dowel
56-2900	23	12	1	Pin-Drive
56-2910	23	13	1	Shaft-Input
56-2920	23	14	1	Ring-Seal
56-2930	23	15	1	Rotor/Ball-Pump
56-2940	23	56	1	Cam Ring ASM Incl 16 17
56-2950	23	18	2	Piston
56-2960	23	19	2	Ring-Backup
56-2970	23	20	2	O-Ring
56-2980	23	21	1	Pin-Coil
56-2990	23	22	1	Pintle ASM
56-3000	23	23	2	Ring-Retaining
56-3010	23	24	2	Ball-.313 Dia
56-3020	23	25	2	Body-Valve
56-3030	23	26	1	Ball-.438 Dia
56-3040	23	27	1	Spring-Valve
56-3050	23	28	1	Plug-Valve
56-3090	23	5	4	Ring-Retaining
56-3090	23	5	4	Ring-Retaining
56-3100	23	33	6	Screw-HSBH
56-3110	23	34	6	Roller
56-3120	23	35	1	Carrier
56-3130	23	36	1	Seal-Oil
56-3140	23	37	1	Kit-Shaft
56-3170	23	40	1	Insert-Ring
56-3180	23	41	1	Spring-Valve
56-3200	23	43	2	Body-Valve
56-3210	23	44	2	Ball-.625 Dia

*Not Illustrated

Toro Part Number Index (cont.)

Part No.	Page No.	Ref. No.	Qty.	Description
56–3220	23	45	1	Rotor/Ball–Motor
56–3230	23	46	1	Shaft–Output
56–3240	23	47	1	Race–Motor
56–3250	23	48	1	ASM–Plug
56–3260	23	49	1	O–Ring
56–3280	23	52	1	Bearing–Ball
56–3290	23	53	1	Ring–Retaining
56–3310	23	55	1	Kit–Seal
57–8000	38	59	2	Bearing–Camshaft
57–8010	38	27	1	Gasket–Bearing Plate
57–8020	38	52	1	Bearing–Crankshaft
57–8030	38	52	1	.010” Undersize
57–8050	38	29	1	Bearing–Crankshaft Rear
57–8060	38	29	1	.010” Undersize
57–8090	28	5	1	Gasket–Base
57–8130	27	12	1	Gear–Crankshaft
57–8140	27	13	1	Washer–Gear
57–8150	26	1	1	Screw–HH
57–8160	38	35	2	Washer–Thrust
57–8170	38	28	A/R	Shim–Crankshaft .005”
57–8180	26	6	1	Gear–Ring
57–8210	27	5	1	Gear–Camshaft
57–8230	27	6	1	Washer–Thrust
57–8280	38	18	2	Gasket–Cover
57–8330	38	38	2	Gasket–Head
57–8450	38	9	4	Tappet–Valve STD
57–8460	38	58	1	Kit–Gasket Oil Pump
57–8470	38	3	1	Plunger–Bypass Valve
57–8480	38	54	1	Pump–Oil
57–8490	28	4	1	Cup–Intake
57–8580	38	11	1	Baffle–Breather Tube
57–9080	36	5	1	Pump–Fuel
57–9090	27	1	1	Ring–Retaining
57–9100	33	8	1	Spring–Governor
57–9120	33	9	1	Bushing–Control Arm
57–9120	33	16	1	Bushing–Control Arm
57–9130	27	2	1	Hub–Governor Cup
57–9150	33	3	1	Bracket–Cable
57–9170	35	9	1	Swivel–Choke Lever
57–9180	35	3	1	Link–Choke
57–9190	33	2	2	Clamp–Cable
57–9190	35	4	1	Clamp–Cable
57–9210	13	21	2	Gasket–Manifold
57–9340	31	8	2	Plug–Spark
57–9350	31	9	2	Cable–Spark Plug 23”
57–9360	38	52	1	.002” Undersize
57–9430	30	12	1	Regulator–Voltage 20 Amp
57–9550	30	21	1	Clamp–Vacuum Port Cap
57–9570	30	5	1	Seal–Oil
57–9580	30	26	1	Seal–Oil
57–9590	38	31	1	Seal–Oil
57–9610	28	12	1	O–Ring
57–9620	34	5	1	O Ring
57–9630	30	7	1	Bearing–Ball Gov Shaft
57–9640	27	4	1	Ball–Governor
57–9650	30	6	1	Bearing–Governor Shaft
57–9660	27	8	1	Key–Woodruff
57–9660	27	15	1	Key–Woodruff
57–9690	38	25	1	Plug–Welch
57–9700	34	6	1	Clip–Retaining
57–9710	27	14	1	Ring–Retaining
57–9720	38	48	4	Ring–Retaining

*Not Illustrated

Toro Part Number Index (cont.)

Part No.	Page No.	Ref. No.	Qty.	Description
57-9740	38	20	2	Washer-Flat
57-9750	29	3	2	Washer-Flat
57-9750	30	24	5	Washer-Flat
57-9760	38	2	1	Washer-Flat
57-9770	24	3	2	Washer-Flat
57-9770	38	40	18	Washer-Flat
57-9800	38	52	1	.020" Undersize
59-0010	38	52	1	.030" Undersize
59-0020	38	29	1	.002" Undersize
59-0030	38	29	1	.020" Undersize
59-0040	38	29	1	.030" Undersize
59-0050	38	36	2	Insert-Valve Seat Intake
59-0080	38	36	2	.010" Oversize
59-0100	38	46	2	Insert-Valve Seat Exh
59-0110	38	46	2	.002" Oversize
59-0120	38	46	2	.005" Oversize
59-0130	38	46	2	.010" Oversize
59-0140	38	46	2	.025" Oversize
59-0180	38	39	1	Head-Cylinder RH
59-0280	38	4	1	Spring-Bypass Valve
59-0290	38	51	1	Tube-Oil
59-0360	30	23	1	Tube-Vacuum Port
59-0370	30	22	1	Cap-Vacuum Port
59-0370	36	8	1	Cap-Vacuum Port
59-0400	27	7	1	Pin-Center
59-0420	30	2	1	Yoke-Governor
59-0430	33	5	1	Spring-Idle Setting
59-0450	27	3	1	Cup-Governor
59-0470	35	1	1	Bracket-Choke Cable
59-0580	25	3	1	Clamp-Wire
59-0590	30	18	2	Terminal-Stator Leads
59-0640	29	5	1	Elbow-Street
59-0720	33	14	1	Pin-Cotter
59-0720	35	10	1	Pin-Cotter
59-0730	38	26	4	Pin-Drive
59-0740	30	9	1	Pin-Dowel
59-0750	38	53	2	Pin Align
59-0790	30	29	1	Stud-Gear Cover
59-0810	26	3	1	Washer-Flat
59-0820	25	16	4	Washer-Flat
59-0820	38	22	1	Washer-Flat
59-0830	25	5	6	Washer-Flat
59-0830	33	4	2	Washer-Flat
59-0830	33	20	1	Washer-Flat
59-0850	35	12	1	Washer-Flat
59-0880	38	32	5	Screw-HF
59-0900	38	41	18	Screw-HH
59-0910	38	5	1	Screw-HH
59-0950	30	1	2	Screw-PH
59-0970	25	6	2	Screw-HHST
59-0970	31	6	2	Screw-HHST
59-0980	25	4	2	Screw-HHST
59-1000	33	26	3	Screw
59-1030	33	6	1	Screw-Tapping Hex Hd
59-1050	33	12	1	Screw-PH
59-1050	36	7	2	Screw-PH
59-1080	25	9	4	Screw-HF
59-1080	30	11	1	Screw-HF
59-1100	25	21	2	Screw-HH
59-1100	33	11	1	Screw-HH
59-1130	30	28	1	Nut
59-1180	32	14	1	Capacitor

*Not Illustrated

Toro Part Number Index (cont.)

Part No.	Page No.	Ref. No.	Qty.	Description
62-2730	24	13	1	Kit-Bushing
62-2740	24	11	1	Starter Brush Kit
62-2760	24	1	1	Kit-Starter Hardware
62-2770	24	7	1	Kit-Starter Shift Lever
62-7770	5	10	2	Key-Ignition
66-0120	5	6	1	Knob
71-5730	28	8	1	Base-Oil
71-5770	38	37	2	Valve-Intake
71-5780	38	45	2	Spring-Clutch
71-5790	38	6	4	Spring-Valve
71-5800	38	7	4	Washer-Valve Spring
71-5810	38	39	1	Head-Cylinder LH
71-5830	38	17	4	Cap-Valve
71-5920	26	5	1	Flywheel Incl 6
71-5960	36	2	1	Filter-Fuel
71-5980	34	16	2	Gasket-Manifold
71-5990	31	1	1	Cover-Plunger
71-6010	31	13	1	Rotor-Ignition
71-6040	24	2	1	Starter Incl 1-13
71-6060	31	10	1	Clip-Wire
71-6140	32	16	1	Grommet-Rubber
71-6170	28	9	1	Seal-Oil
71-6180	38	23	2	Seal-Valve
71-6190	26	7	1	Key-Flywheel
71-6220	25	7	1	Clip-Wire
71-6220	31	11	2	Clip-Wire
71-6220	34	19	1	Clip-Wire
71-6220	36	9	1	Clip-Wire
71-6250	38	24	2	Guide-Valve
71-6260	38	24	2	Guide-Valve
71-6290	38	57	1	Kit-Gasket Complete
71-6310	38	49	2	Pin-Piston
71-6340	26	8	6	Screw
71-6360	30	8	1	Gasket
71-6380	30	14	1	Control-Ignition
71-6400	29	10	2	Screw-HFW
71-6400	30	17	2	Screw-HFW
71-6410	30	15	1	Insulator-Ignition
71-6430	31	5	1	Nut-HHF
71-6440	31	4	1	Nut-HHF
71-6480	34	14	1	Manifold-Intake(P216g)
72-3880	35	2	1	Screw-HF
72-3890	33	17	1	Screw-HH
72-3890	35	8	1	Screw-HH
72-3900	33	1	1	Screw-TAP
72-3900	35	5	1	Screw-TAP
72-3930	24	8	1	Kit-Starter Solenoid
72-3940	24	6	1	Clutch-Starter
72-3950	24	5	1	Seal-Dust
78-0080	5	12:3	1	Bracket-Mounting
78-1540-03	3	23	1	Bracket-Control
78-1550	7	7	1	Lever-Lift
78-2880-03	2	4	1	Shaft-Steering
78-2900-01	2	33	2	Rod ASM-Tie
78-2990-03	10	13	1	Plate-Seat Pivot
78-3000-03	3	21	1	Bracket-Battery Support
78-3020-03	19	22	1	Plate-Front
78-5610-03	3	12	1	Console
78-5620-03	3	2	1	Plate-Hoodstand Rear
78-5631-03	8	9	1	Bracket-Control
78-5640	6	17	1	Valve Actuator Bar ASM
78-5660	8	2	1	Rod-Control

*Not Illustrated

Toro Part Number Index (cont.)

Part No.	Page No.	Ref. No.	Qty.	Description
78-5670	6	12	1	Rod-Lift Control
78-6020	9	23	1	Idler Arm ASM
78-7270	3	37	1	Decal-Lower Dash
78-7300	3	35	1	Decal-Choke
78-7740-03	14	25	1	Pivot Arm-Brake
78-8500-03	9	2	1	Pawl-Parking Brake
79-0060	5	12	1	Voltmeter
79-2470	3	34	1	Decal-Back Plate
79-3620	19	9	1	Wire Harness
79-4990-03	18	19	1	Bracket-Support
79-5020	14	27	1	Tube-Filter To Pump
79-5130-01	4	6	1	Cover-Side L.h.
79-5270	14	13	1	Filter-Oil
79-6330	32	11	1	Housing-Air Cleaner
79-6340	32	12	1	Support-Air Cleaner
79-6390	33	23	1	Bracket-Governor Cont
79-6400	33	22	1	Bushing-Governor Cont
79-6420	33	10	1	Adapter-Governor Arm
79-6440	26	4	1	Screen-Air Inlet
79-6460	28	2	1	Bracket-Fill Tube
79-6470	29	1	1	Gasket-Adapter
79-6490	31	14	1	Gasket-Plate
79-6510	32	3	1	Spacer-Stud
79-6520	32	4	1	Spacer-Nylon
79-6580	24	4	2	Screw
82-0020	38	30	1	Plate-Bearing
82-0500	29	2	1	Adapter-Oil Filter
82-0530	38	12	1	Clamp-Tube
82-0540	38	10	1	Tube-Breather
82-0550	38	15	1	Cap & Valve-Breather
82-0560	38	14	2	Screen-Tube
82-0570	38	13	1	O-Ring-Cap
82-0620	25	18	1	Guard-Stationary
82-0650	32	8	1	Cover-Inner
82-0680	29	8	1	Filter-Gasket Oil
82-0850	34	11	1	Gasket-Carb/Manifold
82-1000	30	13	2	Body-Term Conn Kit
82-1070	34	3	1	Fitting-Barbed
82-1080	34	2	2	Clamp-Hose .50" Dia
82-1080	36	1	6	Clamp-Hose .50" Dia
82-1090	34	2	1	Clamp-Hose .44" Dia
82-1120	34	1	1	Hose-Breather
82-1130	28	10	2	Plug
82-1310	28	6	4	Washer-Flat
82-1310	38	33	5	Washer-Flat
82-1320	26	2	1	Washer-Flat
82-1340	31	2	2	Washer
82-1340	38	55	2	Washer
82-1350	34	13	6	Washer
82-1360	31	3	2	Screw-HH
82-1370	33	18	1	Screw-HH
82-1370	38	56	2	Screw-HH
82-1480	38	16	1	Screw-PH
82-1500	30	20	3	Screw-HH
82-1540	25	8	1	Bolt-HH
82-1540	34	17	1	Bolt-HH
82-1550	32	9	2	Screw-HFW
82-1560	28	1	1	Screw
82-1590	25	20	4	Screw-PH Torx
82-1600	25	2	2	Screw-HF
82-1620	33	19	1	Washer-Lock
82-1660	30	16	2	Washer-Lock

*Not Illustrated

Toro Part Number Index (cont.)

Part No.	Page No.	Ref. No.	Qty.	Description
82-1670	32	5	1	Nut-Wing
82-1690	32	15	1	Nut-HFW
82-1700	28	3	1	Nut-Speed
82-1800	38	42	2	Piston STD INCL 48-49
83-2720	15	2	10	Bolt-Lug
83-2820	9	40	1	Spring-Extension
83-6520	16	16	1	Rod-Lock
86-9280	6	29	1	Tube ASM-Hyd Pressure
86-9290	6	28	1	Tube ASM-Hyd Return
88-2710-03	2	5	1	Support-Steering
88-2790	14	42	1	Decal-Danger
88-2790	20	16:2	1	Decal-Danger
88-3870	2	21:1	1	Cover-Steering Wheel
92-0902	38	42	2	.010" Oversize
92-0903	38	42	2	.020" Oversize
92-0904	38	42	2	.030" Oversize
92-0905	38	50	2	Kit-Ring Piston STD
92-0906	38	50	2	.005" Oversize
92-0907	38	50	2	.010" Oversize
92-0908	38	50	2	.020" Oversize
92-0909	38	50	2	.030" Oversize
92-0911	27	10	1	Sleeve-Bearing
92-0915	32	10	2	Screw-HH
92-0916	35	6	1	Screw-Shoulder
92-0920	25	1	1	Housing-Cylinder Air LH
92-0921	25	12	1	Housing-Cylinder Air RH
92-0922	33	7	1	Arm-Governor Control
92-0967	30	19	1	Stator
92-1525-03	3	28	1	Hoodstand
92-4987	2	19	1	Shaft-Steering
92-5935	24	10	1	Nut
92-7298	20	16	1	Casehalf Decal ASM
92-8747	16	29	2	Decal-Attach A Matic
92-8946	3	39	1	Decal-Danger
92-9513	18	20	1	Line-Fuel 47"
92-9824	1	27	1	Decal-Hood
92-9825	1	25	1	Decal-Hood
92-9826	1	24	1	Decal-Hood
92-9832	3	31	2	Decal-416 Hydro
92-9837	1	26	1	Decal-Danger
92-9848	21	1	1	Trans-Hydro (Service)
93-1613	16	22	1	Latch-Front
93-9800	15	10	2	ASM-Wheel & Tire
93-9801	15	10:1	2	ASM-Wheel w/Zerk
93-9810	23	17	1	Ring-Cam
93-9811	23	50	1	Body
93-9812	23	57	1	Body
93-9813	23	58	1	Fitting-Hydraulic
94-1803-03	13	3	1	Baffle-Deflector
94-1834	14	43	1	Decal-Unidrive
94-1840	32	6	1	Cover-Cleaner
94-1842	34	11	1	Jet-Altitude
94-1843	34		1	Kit-Repair
94-1844	34		1	Kit-Repair
94-1849	5	11:2	1	Cup-Retainer
94-3519	2	21	1	Wheel-Steering
94-3521-01	4	17	1	Footrest-RH
94-3522-01	4	9	1	Footrest-LH
94-3701	12	2	1	Rod-PTO Control
94-3704	11	21	1	Cover-PTO/Belt
94-3707-01	8	32	1	Pedal-Brake
94-3710	4	1	1	Mat-Foot

*Not Illustrated

Toro Part Number Index (cont.)

Part No.	Page No.	Ref. No.	Qty.	Description
94-3712	4	2	1	Mat-Foot
94-3717	15	18	2	Hubcap ASM
94-3718	15	17	2	Hubcap ASM
94-3719	10	37	1	Seat
94-3722-01	10	22	1	Fender
94-3723	5	11	1	Hourmeter
94-3726-03	11	18	1	Bracket-Cover
94-3727	12	1	1	Knob-PTO
94-3730	15	4	2	Hubcap-8"
94-3730	15	18:1	2	Hubcap-8"
94-3731	15	1	2	Hubcap-12"
94-3731	15	17:1	2	Hubcap-12"
94-3735	11	22	2	Nut-Wing
94-3736	1	23	1	Plate-Logo
94-3736	15	16	4	Plate-Logo
94-3736	15	17:2	2	Plate-Logo
94-3736	15	18:2	2	Plate-Logo
94-6650	11	8	1	Plate-Clutch
94-6652	12	22	1	Brake ASM
94-6654-03	8	36	1	Rod-Brake
94-6664	13	2	1	Shield-Heat
94-6668	8	3	1	Knob-Control
94-6673-01	2	22	1	Frame
94-6678	14	34	1	Transaxle/Decal(Service)
94-6680	30	4	1	Clip
94-6680	34	9	1	Clip
94-6683	8	43	1	Sleeve-Protective
94-6688	9	15	1	Spacer-Plate
94-6692-03	18	18	1	Bracket-Support
94-6693-03	18	12	1	Bracket-Support
94-6694	6	13	1	Knob-Lift
94-6697	6	19	1	Hose-Hydraulic
94-6698	6	25	1	Hose-Hydraulic
94-6699	6	32	2	Adaptor-Hose
94-9729	15	1:1	8	Clip-Hubcap
94-9729	15	4:1	6	Clip-Hubcap
95-2844	31	7	1	Coil-Battery Ignition
95-7688	34	7	1	Rod-Governor Control
95-7689	34	8	1	Spring-Governor Rod
95-7690	13	7	1	Engine-Onan
95-7692	34		1	Harness-Wire
95-7696-01	4	16	1	Guard-Belt
95-7697	38	44	4	Bolt-Connecting Rod
95-7698	38	47	4	Nut
98-1701	25	10	2	Bracket-Lift
98-1702	25	17	1	Housing-Blower
98-1703	29	6	1	Switch-Pressure
98-1704	28	13	1	Indicator-Oil Level
98-1706	28	14	1	Adapter-Oil Fill
101711-01	16	25	1	Plate-Hitch
102644-01	16	3	2	Plate-Hitch
103478-01	11	7	1	Housing-Clutch
105763-03	14	46	2	Hub-Wheel
107951-03	3	30	1	Bracket-Fender
108325-03	14	10	1	Arm-Speed Control
108329-03	21	27	1	Plate-Control
109367-03	1	15	1	Bracket-Brake
109367-03	21	15	1	Bracket-Brake
109554-03	19	18	1	Bracket-Guard
110768-03	14	1	1	Dipstick
111201-01	20	14	1	Case-Transaxle
113381-01	2	32	1	Spindle-LH

*Not Illustrated

Toro Part Number Index (cont.)

Part No.	Page No.	Ref. No.	Qty.	Description
113382-01	2	31	1	Spindle-RH
113445-03	7	21	1	Bar-Lift
113454-03	8	15	1	ASM-Cam Control
113874-03	12	13	1	Bracket-PTO
113927-01	20	16	1	Case-Transaxle
113927-01	20	16:1	1	Case-Transaxle
114215-03	13	20	1	Cover-Exhaust Front
114216-03	13	6	1	Cover-Exhaust Rear
114263-03	10	23	2	Spring-Seat
114345-01	10	17	1	Bracket-Gas Spring
116305-03	6	9	1	Bracket-Control
116609-03	13	14	1	Plate-Engine
116862-03	3	5	1	Plate-Top Hoodstand
118280-03	19	11	1	Bracket-Fuse Holder
120590-03	5	2	1	Plate-Stop
1644-01	16	7	1	Hitch ASM
237-69	2	20	1	O-Ring
2412-98	18	21	2	Clamp-Hose
281-10	14	16	1	Plug-Pipe
281-10	20	17	2	Plug-Pipe
288-4	13	11	1	Cap-Pipe
302-5	2	28	2	Fitting-Grease
302-5	8	34	1	Fitting-Grease
302-11	2	7	2	Fitting-Grease
321-4	6	11	1	Screw-HH
321-4	8	10	2	Screw-HH
321-4	17	3	2	Screw-HH
321-6	9	39	1	Screw-HH
321-8	10	25	2	Screw-HH
321-9	8	20	1	Screw-HH
321-11	6	26	2	Screw-HH
322-1	2	24	1	Screw-HH
322-2	3	22	2	Screw-HH
322-2	7	13	2	Screw-HH
322-2	18	15	2	Screw-HH
322-3	13	23	4	Screw-HH
322-3	14	37	2	Screw-HH
322-3	18	17	4	Screw-HH
322-4	10	10	6	Screw-HH
322-5	3	3	2	Screw-HH
322-6	7	3	1	Screw-HH
323-5	14	33	4	Screw-HH
323-6	2	2	2	Screw-HH
323-6	11	19	1	Screw-HH
323-6	12	12	1	Screw-HH
323-6	12	15	2	Screw-HH
323-6	13	12	4	Screw-HH
323-8	2	6	2	Screw-HH
323-8	9	8	1	Screw-HH
323-8	9	30	1	Screw-HH
323-8	13	19	4	Screw-HH
323-9	9	7	1	Screw-HH
323-9	14	29	1	Screw-HH
323-15	1	8	2	Screw-HH
323-15	21	8	2	Screw-HH
323-23	8	24	1	Screw-HH
323-25	21	14	3	Screw-HH
323-26	21	11	1	Screw-HH
323-44	16	1	6	Screw-HH
3217-5	8	14	1	Nut-Hex
3217-5	9	24	1	Nut-Hex
3217-27	5	12:1	1	Nut-HH

*Not Illustrated

Toro Part Number Index (cont.)

Part No.	Page No.	Ref. No.	Qty.	Description
3218-1	12	9	2	Nut-Hex Jam
3218-3	14	45	4	Nut-HJ
3220-1	8	11	3	Nut-HH
3229-25	1	14	4	Screw-CARR
3229-25	12	20	2	Screw-CARR
3230-1	4	12	1	Bolt-CARR
3231-25	16	26	3	Screw-CARR
3234-13	19	25	1	Screw-HHF
3234-33	19	24	3	Screw-HFW
3235-22	14	21	1	Screw-HH
3235-22	18	10	2	Screw-HH
3243-5	14	44	4	Screw-Set
3245-32	8	33:1	1	Screw-Set
3246-2	11	11	2	Screw-HSH
3247-4	38	34	2	Screw-HS
3250-31	10	31	4	Screw-Phcr
3253-2	30	10	3	Washer-Lock #10
3253-3	12	10	2	Washer-Lock
3253-4	2	25	1	Washer-Lock
3253-4	13	22	4	Washer-Lock
3253-4	14	38	2	Washer-Lock
3253-4	18	14	2	Washer-Lock
3253-5	38	33	5	Washer-Lock
3253-21	12	14	2	Washer-Lock
3253-21	14	32	4	Washer-Lock
3254-1	10	29	4	Washer-Lock
3255-9	13	31	6	Washer-Lock
3255-25	5	12:2	1	Washer-Lock
3256-4	9	9	2	Washer-Flat
3256-4	14	24	1	Washer-Flat
3256-4	18	9	2	Washer-Flat
3256-22	1	12	4	Washer-Flat
3256-22	8	19	2	Washer-Flat
3256-22	10	15	2	Washer-Flat
3256-22	12	11	2	Washer-Flat
3256-22	19	26	2	Washer-Flat
3256-23	3	4	2	Washer-Flat
3256-23	6	15	2	Washer-Flat
3256-23	7	20	1	Washer-Flat
3256-23	10	11	4	Washer-Flat
3256-24	8	25	2	Washer-Flat
3256-24	13	18	4	Washer-Flat
3256-24	14	22	2	Washer-Flat
3256-26	7	2	1	Washer-Flat
3256-26	14	12	1	Washer-Flat
3256-26	16	9	1	Washer-Flat
3256-27	11	24	1	Washer-Flat
3256-37	5	14	1	Washer-Flat
3256-62	7	10	2	Washer-Flat
3257-24	14	30	1	Key-Woodruff
3272-1	1	16	2	Pin-Cotter
3272-1	6	2	1	Pin-Cotter
3272-6	14	19	2	Pin-Cotter
3272-10	8	37	1	Pin-Cotter
3272-10	12	5	3	Pin-Cotter
3272-11	6	21	1	Pin-Cotter
3272-17	15	7	2	Pin-Cotter
3272-19	2	11	1	Pin-Cotter
3272-21	2	18	1	Pin-Cotter
3290-378	1	22	1	Tie-Cable
3290-479	4	3	16	Fastener-Panel
3296-4	8	39	1	Nut-Lock

*Not Illustrated

Toro Part Number Index (cont.)

Part No.	Page No.	Ref. No.	Qty.	Description
3296-6	2	3	4	Nut-Lock
3296-8	6	31	1	Nut-Lock
3296-8	8	12	1	Nut-Lock
3296-8	8	44	3	Nut-Lock
3296-8	10	14	2	Nut-Lock
3296-27	10	28	4	Nut-Lock
3296-29	3	24	4	Nut-Lock
3296-29	4	11	5	Nut-Lock
3296-29	6	14	2	Nut-Lock
3296-29	7	8	3	Nut-Lock
3296-29	10	4	6	Nut-Lock
3296-29	10	24	4	Nut-Lock
3296-29	18	13	4	Nut-Lock
3296-39	2	23	4	Nut-Lock
3296-39	7	6	1	Nut-Lock
3296-39	8	31	1	Nut-Lock
3296-39	9	18	1	Nut-Lock
3296-39	13	17	8	Nut-Lock
3296-39	14	23	1	Nut-Lock
3296-39	16	24	3	Nut-Lock
3296-39	21	3	6	Nut-Lock
3296-42	1	11	4	Nut-Lock
3296-42	6	5	2	Nut-Lock
3296-42	9	26	1	Nut-Lock
3296-42	17	12	2	Nut-Lock
3296-42	19	19	3	Nut-Lock
3296-45	14	11	1	Nut
3296-56	19	14	1	Nut-Lock
3296-59	12	18	1	Nut-Lock
32103-22	17	11	2	Nut-Wing
32120-47	7	18	1	Ring-Retaining
32120-47	8	23	3	Ring-Retaining
32120-47	9	19	1	Ring-Retaining
32120-62	11	4	1	Ring-Retaining
32120-64	21	6	1	Ring-Retaining
32120-72	11	3	2	Ring-Retaining
32120-93	2	34	2	Ring-Retaining
32121-94	8	8	1	Pin-Spirol
32121-111	2	15	1	Pin-Spiral
32128-19	9	1	1	Nut-HF
32128-40	11	17	1	Nut-HFW
32136-5	2	10	1	Nut-Hex Slot
32149-9	5	11:1	2	Nut/Washer-Lock
32151-11	12	3	1	Ring-Grip
32151-91	7	11	2	Ring-Retaining
505-144	13	9	1.8	Oil-Engine
505-144	14	9	4.5	Oil-Engine
5638-01	2	27	1	Axle-Front

*Not Illustrated