

TORO

OWNER'S OPERATING AND PARTS MANUAL



1954

7 UNIT HYDRAULIC PARKMASTER

Price 25 cents

SERIAL NOS. 72038-101 AND UP

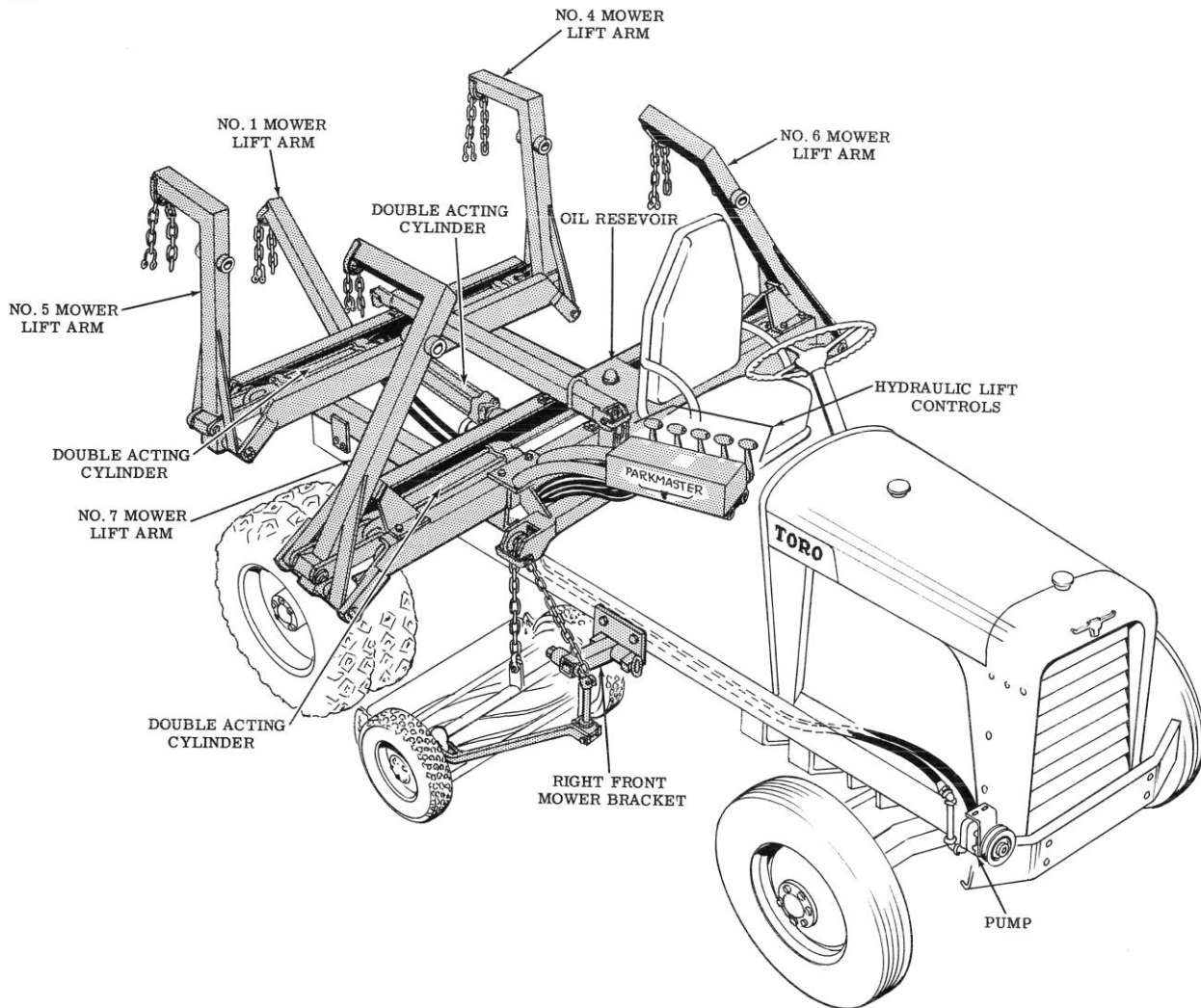


To The TORO Owner

This Owner Manual has been especially prepared for your information and guidance in the operation and care of your new Toro 7 Unit Hydraulic Parkmaster.

Properly adjusted, operated and maintained, this Toro Parkmaster will respond quickly and easily to every reasonable demand and give years of reliable service.

The Toro 7 Unit Hydraulic Parkmaster is manufactured by an organization of mowing machinery specialists for over 40 years. Each unit is carefully inspected and tested before leaving the factory. For best performance study this manual for regular maintenance procedures.



TORO - 7 UNIT HYDRAULIC PARKMASTER

Warranty

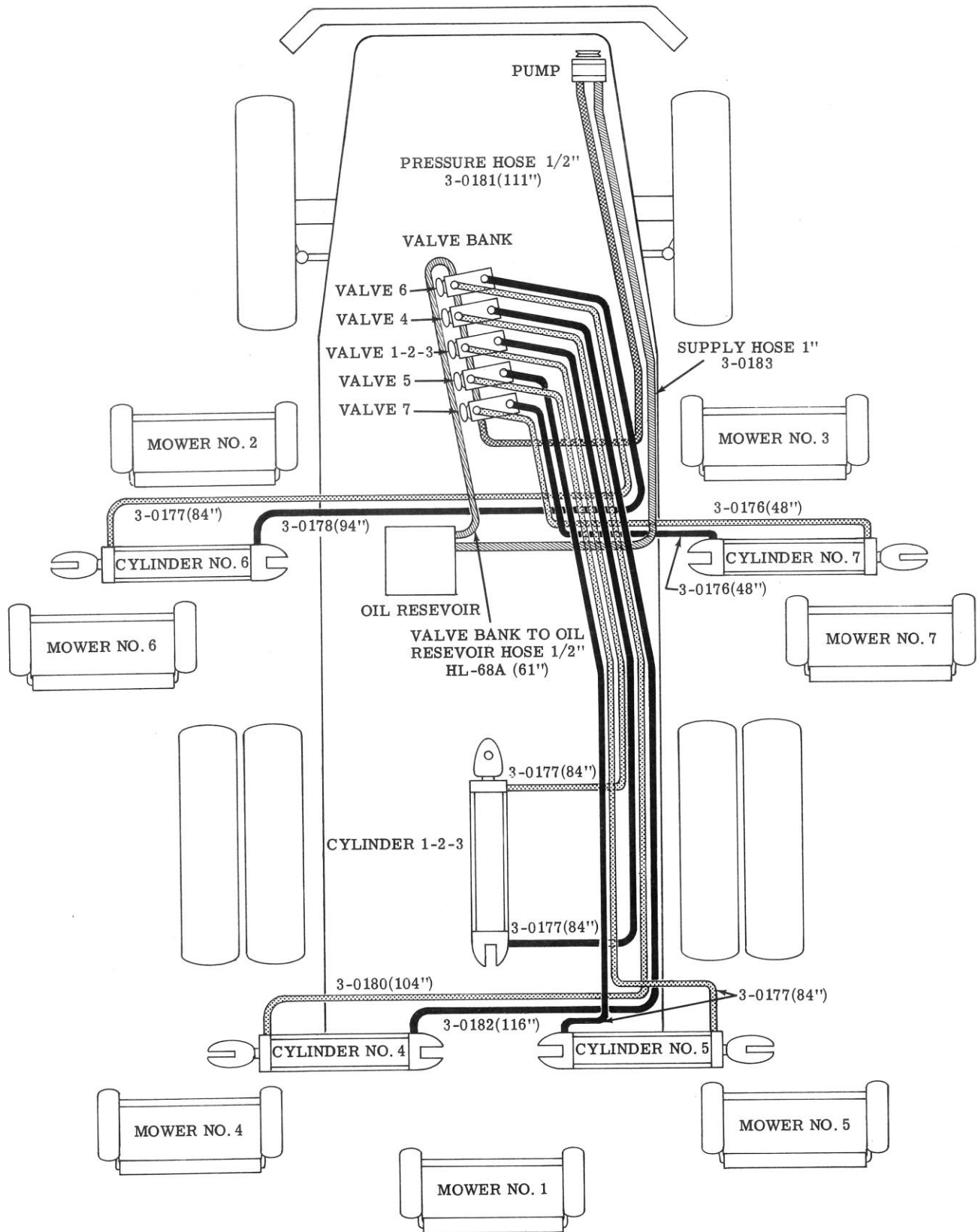
The Manufacturer warrants each new piece of equipment sold to be free of defects in material and workmanship. For ninety (90) days from the purchase date, Toro Manufacturing Corporation will repair or replace for the original purchaser, free of charge, through any Authorized Service Dealer, any part or parts found at our factory in Minneapolis, Minn., to be defective under normal use and service.

This Warranty does not obligate the Manufacturer to bear the cost of transportation charges in connection with the replacement or repair of

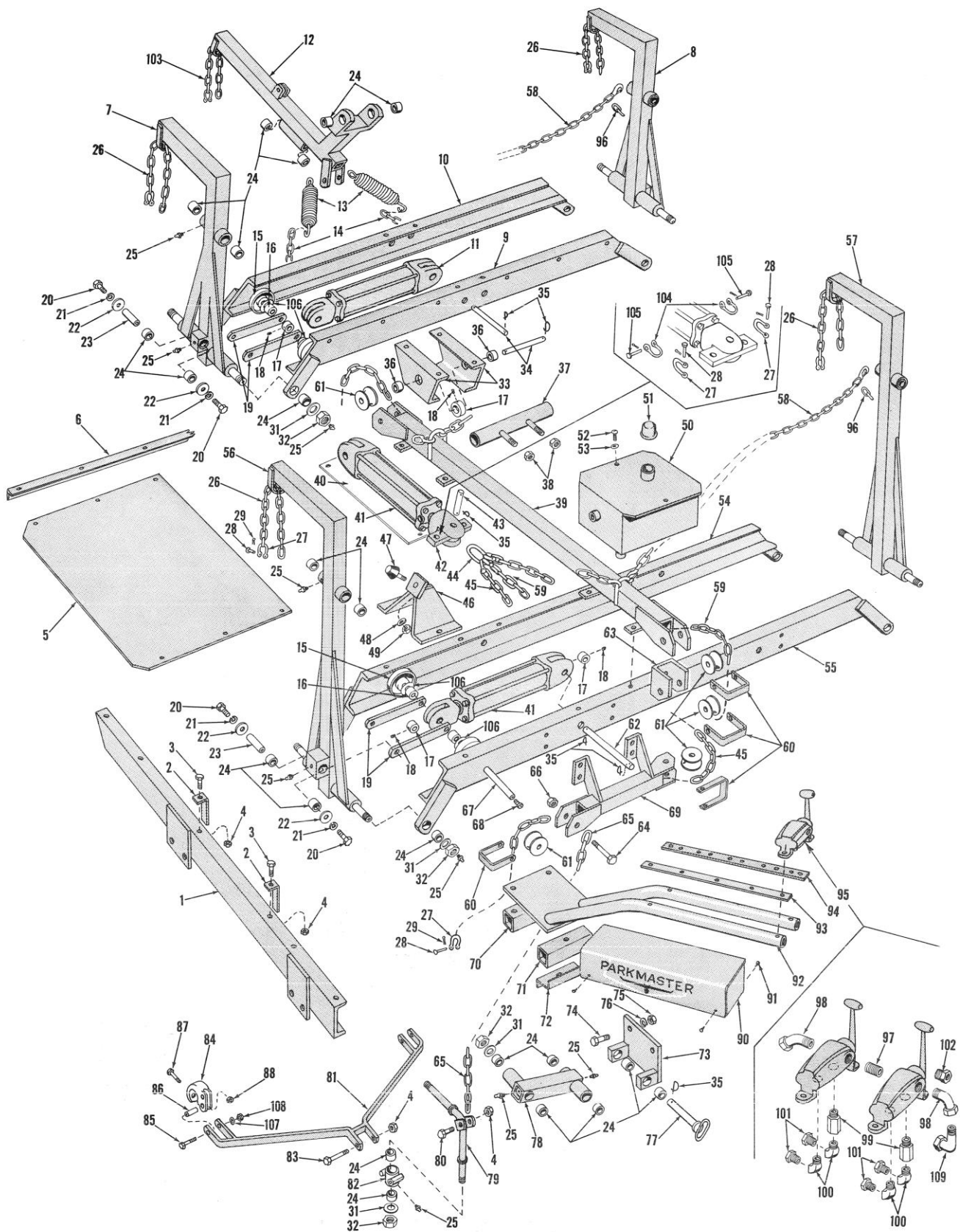
defective parts -- nor shall it apply to a machine upon which repairs or alterations have been made, unless authorized by the manufacturer.

This Warranty does not include nor cover standard accessories produced by other manufacturers (such as engines.) Such accessories have separate warranties by their respective manufacturers...and repair or exchange will be made on the basis of such warranties, and the policies authorized by them shall be adhered to.

This Warranty is in lieu of all other warranties expressed or implied.



HYDRAULIC SYSTEM SCHEMATIC



| Ref. No. | Part No. | Description | No. Used |
|----------|----------|---|----------|
| 1 | 3-0134 | Side Channel, Right | 1 |
| * | 3-0132 | Side Channel, Left | 1 |
| 2 | 3-0236 | Hose Clip | 2 |
| 3 | 3213-3 | Screw, $\frac{1}{2}$ " N. F. x $1\frac{1}{2}$ " | 42 |
| * | 3290-216 | Washer, Use With Ref. 3 & 4 | 41 |
| 4 | 32118-3 | Nut, $\frac{1}{2}$ " Lock | 64 |
| 5 | 3-0268 | Mudguard | 2 |
| 6 | 3-0267 | Support, Mudguard | 1 |
| 7 | 3-0251 | Arm, Short, Right | 1 |
| 8 | 3-0252 | Arm, Short, Left | 1 |
| 9 | 3-0282 | Rear Cross Channel, Front | 1 |
| 10 | 3-0124 | Rear Cross Channel, Rear | 1 |
| 11 | 353-121 | Cylinder, 10" Less Pins | 2 |
| 12 | 3-0224 | Rear Drawbar | 1 |
| 13 | 5P-38A | Spring | 2 |
| 14 | 3-0295 | Chain | 2 |
| 15 | 243-4 | Trolley Wheel | 8 |
| 16 | 3-0145 | Spacer | 8 |
| 17 | 3-0156 | Collar | 9 |
| 18 | 3287-7 | Set Screw | 9 |
| 19 | 3-0125 | Link | 8 |
| 20 | 3211-4 | Screw, $\frac{3}{8}$ " N. F. x 1" | 8 |
| 21 | 3253-5 | Lockwasher, $\frac{3}{8}$ " Reg. | 8 |
| 22 | LU-323 | Washer | 8 |
| 23 | 3-0128 | Shaft | 4 |
| 24 | 3-0348 | Bushing | 54 |
| 25 | 302-5 | Grease Fitting | 28 |
| 26 | 3-0292 | Chain, Lift Bail | 4 |
| 27 | 282-13 | Yoke | 7 |
| 28 | 283-10 | Pin | 7 |
| 29 | 3290-250 | Hairpin Cotter | 9 |
| 31 | GM-215A | Washer | 22 |
| 32 | 32118-5 | Nut, $\frac{3}{4}$ " Lock | 22 |
| 33 | 3-0146 | Channel | 2 |
| 34 | 3-0144 | Shaft | 3 |
| 35 | K-139 | Spring Pin | 13 |
| 36 | 3-0145 | Spacer | 2 |
| 37 | 3-0350 | Tube | 1 |
| 38 | 3296-6 | Nut, $\frac{3}{8}$ " N. F. Stop | 2 |
| 39 | 3-0105 | Channel Brace | 1 |
| 40 | 3-0175 | Plate | 1 |
| 41 | 353-125 | Cylinder, 12" Less Pins | 3 |
| 42 | 3-0288 | Link | 1 |
| 43 | 353-60 | Pin | 1 |
| 44 | 3-0326 | Ring | 1 |
| 45 | 3-0138 | Chain, #2 & 3 Mower, 47 Links | 2 |
| 46 | 3-0285 | Arm Stop | 2 |
| 47 | 212-183 | Rubber Bumper | 2 |
| 48 | 3256-3 | Washer, $\frac{5}{16}$ " Cut | 2 |
| 49 | 3296-5 | Nut, $\frac{5}{16}$ " Stop | 2 |
| 50 | 3-0161 | Tank, Oil Reservoir | 1 |
| 51 | 353-119 | Cap | 1 |
| 52 | 32104-6 | Screw, $\frac{5}{8}$ " x $\frac{3}{4}$ " N. C. | 2 |
| 53 | 3256-4 | Washer, $\frac{3}{8}$ " Cut | 2 |
| 54 | 3-0122 | Front Cross Channel, Rear | 1 |
| * | 3290-216 | Bevel Washer | 41 |

*Not Illustrated

| Ref. No. | Part No. | Description | No. Used |
|----------|----------|--|----------|
| 55 | 3-0120 | Front Cross Channel, Front | 1 |
| 56 | 3-0173 | Arm, Long, Right | 1 |
| 57 | 3-0174 | Arm, Long, Left | 1 |
| 58 | 3-0297 | Chain, Safety | 4 |
| 59 | 3-0140 | Chain, #1 Mower, 78 Links | 1 |
| 60 | 3-0136 | Chain Keeper | 7 |
| 61 | 3-0155 | Sheave | 7 |
| 62 | 3-0144 | Shaft | 2 |
| 63 | 3-0112 | Bracket, Sheave | 1 |
| 64 | 3213-14 | Screw, $\frac{1}{2}$ " N. F. x 5" | 7 |
| 65 | 3-0294 | Chain, Safety | 2 |
| 66 | 32118-3 | Nut, $\frac{1}{2}$ " Lock | 7 |
| 67 | 3-0130 | Shaft | 4 |
| 68 | 3290-118 | Special Screw | 8 |
| 69 | 3-0170 | Side Mower Tube, Right | 1 |
| * | 3-0171 | Side Mower Tube, Left | 1 |
| 70 | 3-0166 | Spacer Tube, Rear | 1 |
| 71 | 3-0165 | Spacer Tube, Front | 1 |
| 72 | 3-0270 | Spacer | 1 |
| 73 | 3-0135 | Bracket | 2 |
| 74 | 3214-4 | Screw, $\frac{5}{8}$ " N. F. x 1" | 4 |
| 75 | 3253-8 | Washer, $\frac{5}{8}$ " Reg. | 4 |
| 76 | 3219-6 | Nut, $\frac{5}{8}$ " N. F. Full | 4 |
| 77 | 3-0152 | Pin | 2 |
| 78 | 3-0151 | Arm, Front | 2 |
| 79 | 3-0154 | Lift Bail | 7 |
| 80 | 3213-6 | Screw, $\frac{1}{2}$ " N. F. x $2\frac{1}{4}$ " | 7 |
| 81 | 3-0248 | Drawbar | 7 |
| 82 | 3-0255 | Bushing Housing | 7 |
| 83 | 3213-12 | Screw, $\frac{1}{2}$ " N. F. x 4" | 7 |
| 84 | F-732 | Clamp, Drawbar | 14 |
| 85 | 3213-9 | Screw, $\frac{1}{2}$ " N. F. x 3" | 14 |
| 86 | F-733 | Spacer | 14 |
| 87 | 3212-10 | Screw, $\frac{7}{16}$ " N. F. x $2\frac{1}{2}$ " | 14 |
| 88 | 3219-4 | Nut, $\frac{7}{16}$ " N. F. | 14 |
| 89 | 3253-6 | Washer, $\frac{7}{16}$ " Reg. Lock | 14 |
| 90 | 3-0225 | Valve Cover | 1 |
| 91 | 32104-29 | Screw, 10-24 x $\frac{1}{2}$ " Self Tap | 3 |
| 92 | 3-0164 | Valve Stand | 1 |
| 93 | 3-0150 | Valve Bracket, Rear | 1 |
| 94 | 3-0148 | Valve Bracket, Front | 1 |
| 95 | 353-57 | Control Valve | 5 |
| 96 | 3-0293 | Chain, 2 Links | 4 |
| 97 | 289-14 | Nipple | 4 |
| 98 | 353-130 | Swivel Adapter, 45° | 1 |
| 99 | 353-62 | Restrictor Valve | 5 |
| 100 | 304-55 | Street Ell | 10 |
| 101 | 353-129 | Adapter Union | 10 |
| 102 | 2812-4 | Bushing, $\frac{3}{4}$ " x $\frac{1}{2}$ " | 1 |
| 103 | 3-0296 | Chain, 35 Links | 1 |
| 104 | 282-4 | Shackle, $\frac{1}{4}$ " | 2 |
| 105 | 283-6 | Pin, $\frac{5}{16}$ " | 2 |
| 106 | 3256-5 | Washer, $\frac{7}{16}$ " Cut | 8 |
| 107 | 3253-7 | Lockwasher, $\frac{1}{2}$ " Reg. | 14 |
| 108 | 3219-5 | Nut, $\frac{1}{2}$ " N. F. | 14 |
| 109 | 353-27 | Adapter Swivel 90° | 1 |

IMPORTANT ORDERING INSTRUCTIONS

Repair parts are available from your TORO distributor or service dealer.

To insure getting correct parts without delay, please furnish the following information:

1. Serial number of your Parkmaster as shown on the name plate.

2. Part number, description and quantity of each part required.

3. State whether parts should be shipped by mail or express. All repair parts are shipped f.o.b. factory.

4. Name and address where parts are to be shipped.

5. Do not order by reference number; use part number.

INSIST ON GENUINE TORO PARTS

OPERATING INSTRUCTIONS

HYDRAULIC SYSTEM AND CONTROLS

The hydraulic system includes four double-acting hydraulic cylinders for raising and lowering the wing mowers, and one double-acting cylinder for raising and lowering the underslung side mowers and the rear center mower. Other components of the hydraulic system include CHAR-LYNN hydraulic pump, hydraulic fluid tank, lines and controls.

TO RAISE WING MOWERS FOR TRANSPORT

With the tractor engine running, pull down on wing mower controls (see control panel cover on tractor) until the wing mowers swing into position. The control levers will snap back into neutral position when each unit is fully raised.

TO RAISE UNDERSLUNG AND CENTER UNITS

PULL DOWN on the center lever control and release. Underslung and rear center mowers will raise into position and the control lever will snap back to neutral position. Snap 4 safety chains into place and the Hydraulic Frame is now ready for transport.

FILLING THE HYDRAULIC SYSTEM

Fill the oil reservoir, located behind the operator's seat, with a good grade of S.A.E. 30 motor oil, or with a hydraulic fluid (tank capacity is 2 gallons). For maintenance of the hydraulic pump and valves, please refer to the hydraulic pump manual.

TO LOWER WING UNITS FOR MOWING

Remove 4 safety chains from mowers and, with all control levers in neutral position, push down on the wing mower control. Lever will snap back into neutral position when mower is fully lowered. A restrictor valve will slow the mower descent.

TO LOWER UNDERSLUNG AND CENTER UNITS

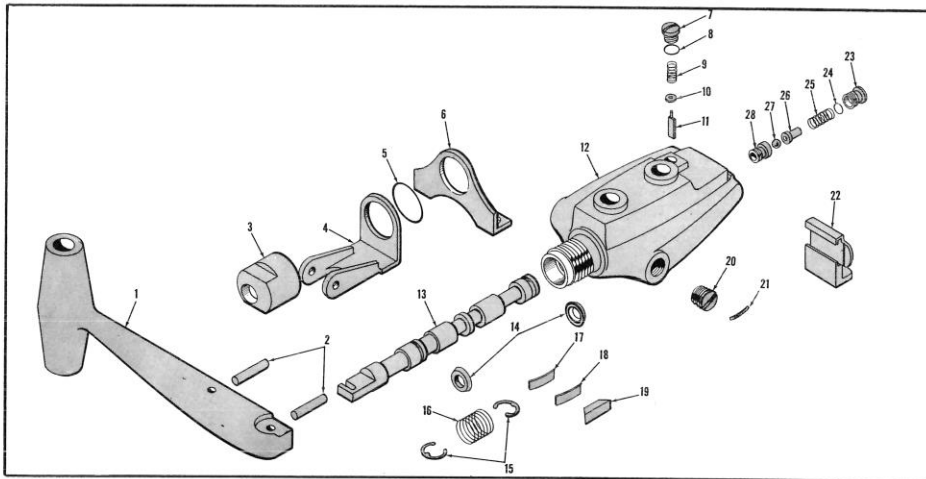
PUSH DOWN on the center control lever to lower the left and right underslung and rear center mowers simultaneously. This lever will snap back to neutral position when mowers are fully lowered and can be left in this position for mowing.

Caution!

BEFORE RAISING OR LOWERING MOWERS, EACH TIME CHECK TO MAKE SURE THAT NO PERSONS ARE WORKING ON, OR ARE NEAR, THE CUTTING UNITS.



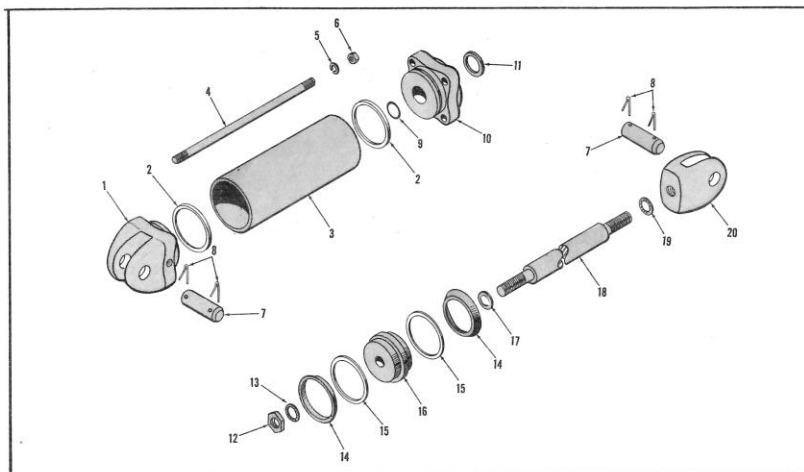
CONTROL VALVE ASSEMBLY



| Ref. No. | Part No. | Description | No. Used |
|----------|----------|-------------|----------|
| 1 | 353-93 | Handle | 1 |
| 2 | 32121-33 | Pin | 2 |
| 3 | 353-91 | End Cap | 1 |
| 4 | 353-96 | Bracket | 1 |
| 5 | 237-29 | "O" Ring | 1 |
| 6 | 353-97 | Bracket | 1 |
| 7 | 353-114 | Cap, Detent | 1 |
| 8 | 237-30 | "O" Ring | 1 |
| 9 | 353-115 | Spring | 1 |
| 10 | 353-95 | Bushing | 1 |
| 11 | 353-100 | Blade | 1 |
| 12 | 353-113 | Valve Block | 1 |
| 13 | 353-94 | Valve Spool | 1 |
| 14 | 253-79 | Seal | 2 |

| Ref. No. | Part No. | Description | No. Used |
|----------|----------|-------------------|----------|
| 15 | 32120-56 | Snap Ring | 2 |
| 16 | 353-89 | Spring | 1 |
| 17 | 353-108 | Shuttle Spring | 1 |
| 18 | 353-99 | Shuttle Spring | 1 |
| 19 | 353-98 | Shuttle | 1 |
| 20 | 353-103 | Plug | 1 |
| 21 | 353-101 | Lock Wire | 1 |
| 22 | 353-92 | End Cap | 1 |
| 23 | 353-102 | Spring Retainer | 1 |
| 24 | 237-28 | "O" Ring | 1 |
| 25 | 353-88 | Spring | 1 |
| 26 | 353-111 | Ball Retainer | 1 |
| 27 | 255-2 | Ball | 1 |
| 28 | 353-112 | Relief Valve Seat | 1 |

CYLINDER ASSEMBLY

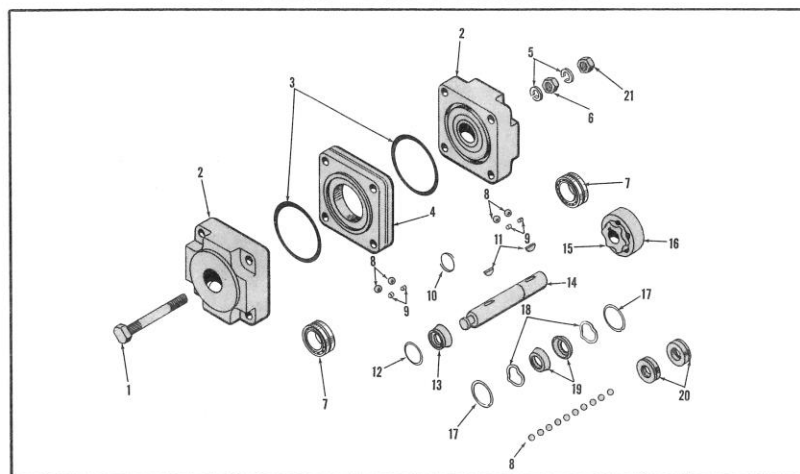


| Ref. No. | Part No. | Description | No. Used |
|----------|----------|------------------------|----------|
| 1 | 353-72 | Clevis End Cap | 1 |
| 2 | 353-65 | Seal, End Cap | 2 |
| 3 | 353-70 | Tube, 8" | 1 |
| * | 353-122 | Tube, 10" | 1 |
| * | 353-126 | Tube, 12" | 1 |
| 4 | 353-77 | Tie Rod, 8" | 4 |
| * | 353-123 | Tie Rod, 10" | 4 |
| * | 353-127 | Tie Rod, 12" | 4 |
| 5 | 3254-3 | Lockwasher, 7/16" Int. | 4 |
| 6 | 3219-4 | Nut, 7/16" N. F. | 4 |
| 7 | 353-76 | Pin | 2 |
| 8 | 3272-49 | Cotter Pin | 4 |

| Ref. No. | Part No. | Description | No. Used |
|----------|----------|------------------------|----------|
| 9 | 353-64 | Seal | 1 |
| 10 | 353-73 | Top End Cap | 1 |
| 11 | 353-66 | Seal Ring Wiper | 1 |
| 12 | 3219-7 | Nut, 3/4" N. F. | 1 |
| 13 | 3254-7 | Lockwasher, 3/4" Int. | 1 |
| 14 | 353-68 | Block V Seal | 2 |
| 15 | 353-69 | Backup Washer | 2 |
| 16 | 353-74 | Piston | 1 |
| 17 | 353-67 | Fibre Washer | 1 |
| 18 | 353-75 | Piston Rod, 8" and 10" | 1 |
| * | 353-128 | Piston Rod, 12" | 1 |
| 19 | 3254-13 | Lockwasher, 7/8" Int. | 1 |
| 20 | 353-71 | Rod End Clevis | 1 |

*Not Illustrated

PUMP ASSEMBLY



| Ref. No. | Part No. | Description | No. Used |
|----------|----------|---------------------------|----------|
| 1 | 353-118 | Screw, 1/2" N. F. Knurled | 4 |
| 2 | 353-81 | Bearing Block | 2 |
| 3 | 237-32 | "O" Ring | 2 |
| 4 | 353-80 | Rotor Block | 1 |
| 5 | 3253-7 | Lockwasher, 1/2" Reg. | 8 |
| 6 | 3219-5 | Nut, 1/2" N. F. | 4 |
| 7 | 251-130 | Bearing | 2 |
| 8 | 255-5 | Ball | 14 |
| 9 | 353-87 | Insert | 4 |
| 10 | 32120-28 | Snap Ring | 1 |

| Ref. No. | Part No. | Description | No. Used |
|----------|----------|---------------|----------|
| 11 | 3257-5 | Key | 2 |
| 12 | 237-31 | "O" Ring | 1 |
| 13 | 353-84 | Plug | 1 |
| 14 | 353-83 | Shaft | 1 |
| 15 | 353-78 | Rotor | 1 |
| 16 | 353-79 | Ring | 1 |
| 17 | 32120-57 | Snap Ring | 2 |
| 18 | 353-85 | Spring Washer | 2 |
| 19 | 353-86 | Washer | 2 |
| 20 | 353-80 | Oil Seal | 2 |
| 21 | 3220-5 | Nut, 1/2" Jam | 4 |

TORO

POWER MOWERS

Toro power mowers and Power Handle implements are designed and built to give years of precision performance . . . to make them "the best you can buy." And there's over 40 years of manufacturing experience to back them up. One of Toro's most important objectives — and one which has

helped make Toro the world's largest manufacturer of power mowers — is to provide the customer with complete local service and parts. This Toro has done through an extensive chain of service dealers, factory-trained to give you the most careful, competent care for your Toro work-saver.



18" ROTARY



20" HAND PROPELLED ROTARY



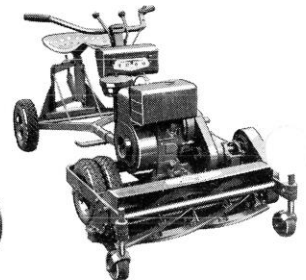
20" SELF-PROPELLED ROTARY



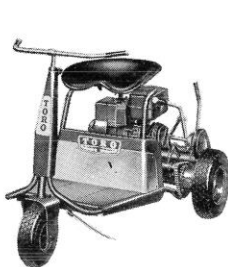
20" SPORTLAWN



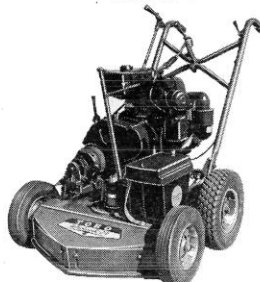
27" STARLAWN



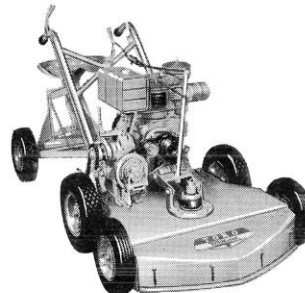
PARK SPECIAL



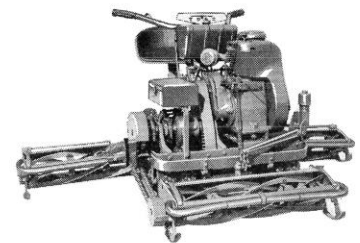
27" PONY



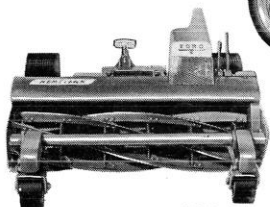
24" SELF-PROPELLED ROTARY



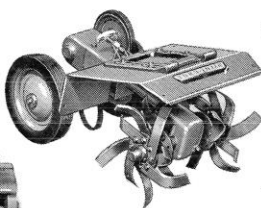
31" GRASSKING



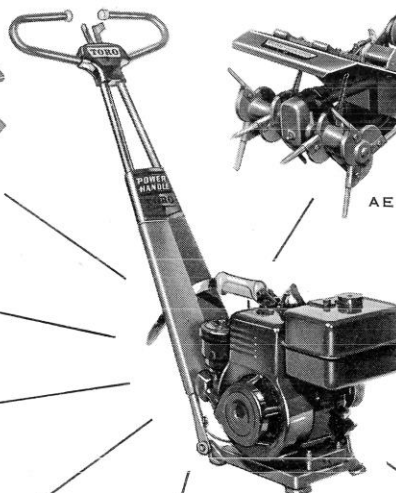
76" PROFESSIONAL



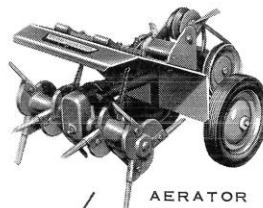
25" HOMELAWN



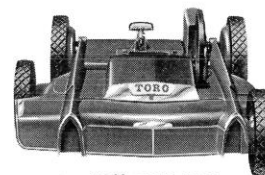
TILLER



POWER HANDLE



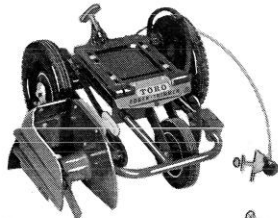
AERATOR



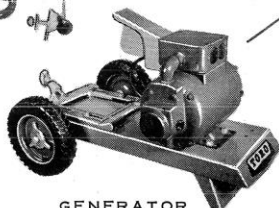
22" ROTARY



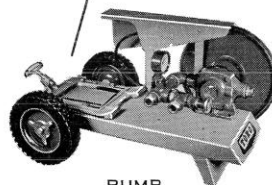
SPRAYER



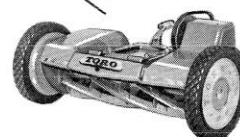
EDGER-TRIMMER



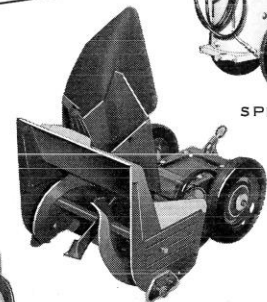
GENERATOR



PUMP



20" SPORTLAWN



17" SNOWHOUND

**TORO
POWER HANDLE
IMPLEMENTS**

LITHO IN U. S. A.

DISTRIBUTED BY