



Spring Upgrade Kit

Multi-Pro® Turf Sprayer with Covered Boom Kit

Model No. 120-8508

Form No. 3369-451 Rev B

Installation Instructions

Installing the Springs

1. Park the machine on a level surface, lower the booms, and support the ends with jack stands.
2. Set the parking brake, stop the engine, and remove the key.
3. Remove and discard the locknut, spring retainer, spring, and sheath from one of the four boom pivot bolts.

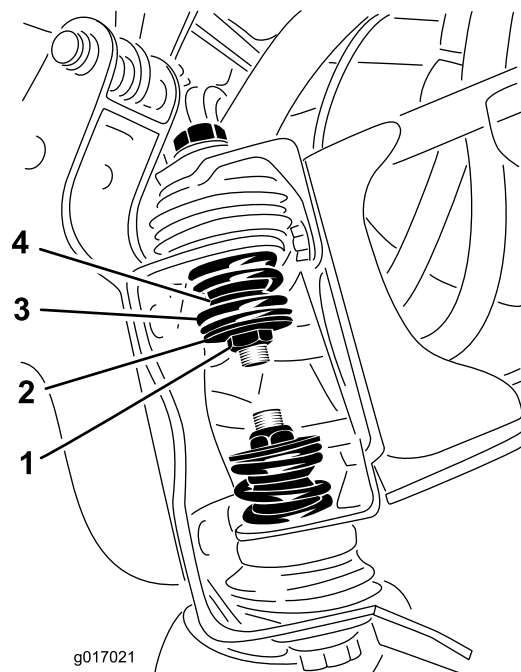


Figure 1

1. Locknut
2. Spring retainer
3. Spring
4. Sheath

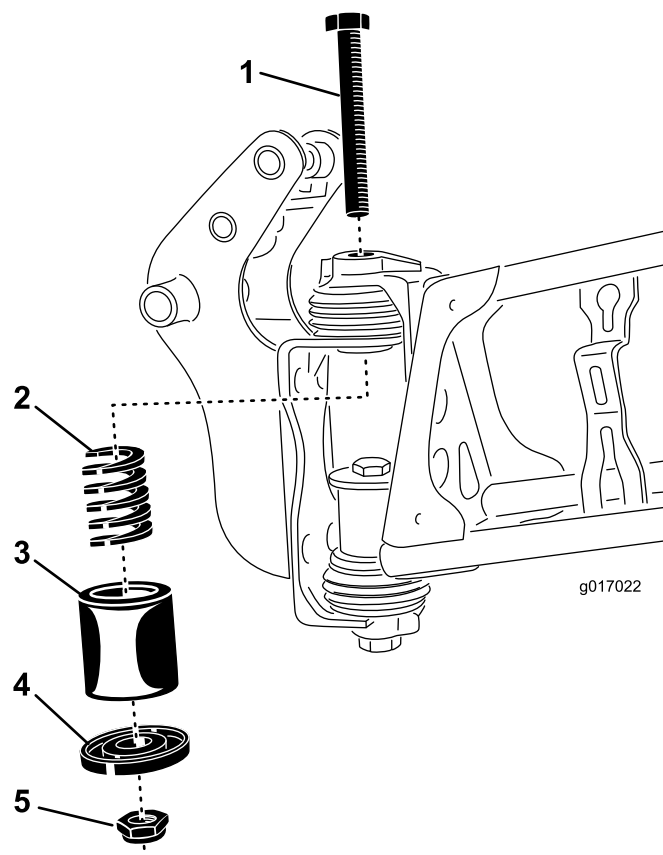


Figure 2

1. Boom pivot bolt
 2. Spring
 3. Flexible sleeve
 4. Spring retainer
 5. Locknut
6. Repeat steps 3 through 5 for the other 3 boom pivot bolts.

4. Install a flexible sleeve over one of the new springs.
5. Install the sleeve and spring assembly, spring retainer, and locknut onto the boom pivot bolt. Tighten the locknut until at least two threads are showing and the locknut contacts the spring retainer.

