



Replacement Stabilizer Spring Kit

Greensmaster® 3300/3400 Series Traction Unit

Model No. 117-6842

Installation Instructions

Loose Parts

Use the chart below to verify that all parts have been shipped.

Description	Qty.	Use
Right-hand spring retainer	3	Install the kit.
Left-hand spring retainer	3	
Right-hand stabilizer spring	3	
Left-hand stabilizer spring	3	
Spacer	6	
Mounting bolt	6	
Flange nut	6	

1. Move the machine to a level surface, and lower all the cutting units to the ground.
2. Stop the machine, wait for all moving parts to stop, set the parking brake, and remove the key from the ignition.
3. Remove the existing springs and spring retainers from a suspension arm.

Note: Save the adjustment bolts that hold the spring retainers onto the suspension arm.

4. Install the new left- and right-hand spring and retainer assemblies onto the suspension arm as shown in Figure 1.

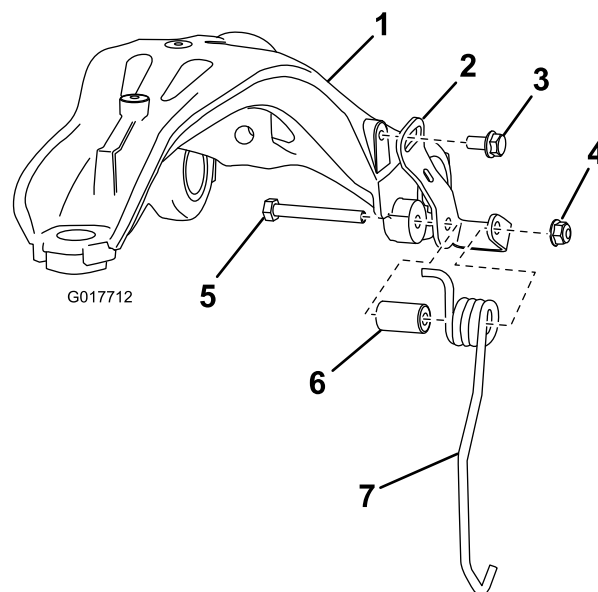


Figure 1

Right-hand spring-and-retainer assembly components shown

- | | | |
|-------------------------------|------------------|-----------------------|
| 1. Suspension arm | 4. Flange nut | 7. Stabilizing spring |
| 2. Spring retainer | 5. Mounting bolt | |
| 3. Adjustment bolt (existing) | 6. Spacer | |

Note: Hand tighten the adjustment bolt and the mounting bolt and flange nut.

Note: For the first spring-and-retainer assembly that you install, position the adjustment bolt in the center of the slot in the spring retainer (Figure 2). For the spring-and-retainer assembly on the other side of the

suspension arm, you may position the adjustment bolt anywhere in the slot in the spring retainer.

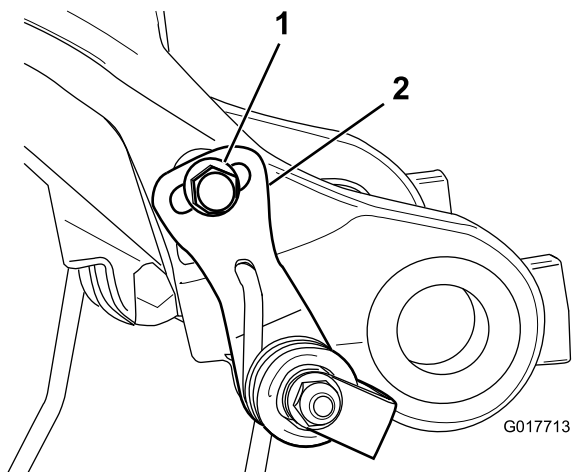


Figure 2

1. Adjustment bolt located in the center of the slot 2. Spring retainer

-
5. Repeat steps 3 and 4 for the other 2 suspension arms.
 6. Raise the cutting units.
 7. Ensure that the cutting units are perpendicular to the forward direction of travel.

Note: To adjust the alignment of a cutting unit, loosen the mounting bolt and flange nut and the adjustment bolt on the side of the suspension arm necessary to correct the problem, and align the cutting unit so that it is perpendicular to the forward direction of travel.

Note: If you cannot properly align a cutting unit after installing the new spring-and-retainer assemblies, do the following: Loosen the adjustment bolt on the side of the suspension arm that is in the center of the slot of the spring retainer; loosen and position the adjustment bolt on the other side of the arm so that it is in the center of the slot in the spring retainer; and align the cutting unit so that it is perpendicular to the forward direction of travel.

8. For each suspension arm, tighten all mounting bolts and flange nuts securely, then tighten all adjustment bolts securely.