



**Count on it.**

# Parts Catalog

## 60in E-Z Vac™ Blower and Drive Kit

**Z Master® 2000 Series Mower**

**Model No. 78573—Serial No. 312000001 and Up**



# Ordering Replacement Parts

To order replacement parts, please supply the part number, the quantity, and the description of each part desired.

## Understanding Reference Numbers

Each identified part in an illustration has a reference number. The reference number for a part also appears in the parts list, along with other information about the part.

This catalog uses two special reference number formats, one to indicate parts in a service assembly and another to indicate the quantity of a given part in an illustration.

## Service Assembly Reference Numbers

Parts in service assemblies have reference numbers in the form a:b. The a represents the reference number of the entire service assembly and the b represents a sequential number unique to each part within the service assembly.

For example, a wheel assembly might be identified by reference number 6, the tire by 6:1, the valve by 6:2, and the wheel by 6:3. When you order the assembly identified by reference number 6, you receive all parts identified by reference numbers 6:1, 6:2, and 6:3. However, you may also order any part individually. Reference numbers of this type appear in illustration and in parts lists.

## Reference Numbers Indicating Quantity

In an illustration, if a reference number indicates more than one part, the reference number has the form nX y. The n represents the quantity of the part, the X is the multiplication symbol, and the y represents the reference number.

For example, in an illustration, the reference number 2X 37 means that two of the parts identified by reference number 37 are indicated.

# List of Abbreviations

**AR:** as required

**ASM:** assembly

**BBC:** blade brake control

**BHTF:** button head thread forming

**CARR:** carriage

**CCW:** counter clockwise

**CW:** clockwise

**DEG:** degrees

**DPA:** Dual Point Adjustment

**ECM:** electronic control module

**EXT:** external

**FH:** flat head

**GA:** gauge

**HD:** heavy-duty

**HF:** hex flange

**HH:** hex head

**HHF:** hex head flange

**HHFTF:** hex head flange thread forming

**HJ:** hex jam

**HLH:** hex lag head

**HOC:** height-of-cut

**HSBH:** hex socket button head

**HSFH:** hex socket flat head

**HSH:** hex socket head

**HWH:** hex washer head

**HWHTF:** hex washer head thread forming

**HYD:** hydraulic

**LH:** left hand

**LPG:** Liquid Propane Gas

**NI:** nylon insert

**NPTF:** national pipe thread fine

**PFH:** phillips flat head

**PPH:** phillips pan head

**PPHTF:** phillips pan head thread forming

**PRH:** phillips round head

**PTH:** phillips truss head

**PTO:** power-take-off

**RH:** right hand

**ROPS:** roll-over protection system

**RRB:** rear roller brush

**SFH:** slotted fillister head

**SHH:** slotted hex head

**SHWH:** slotted hex washer head

**SPH:** slotted pan head

**SQH:** square head

**SRH:** slotted round head

**STD:** standard

**TAP:** self tapping

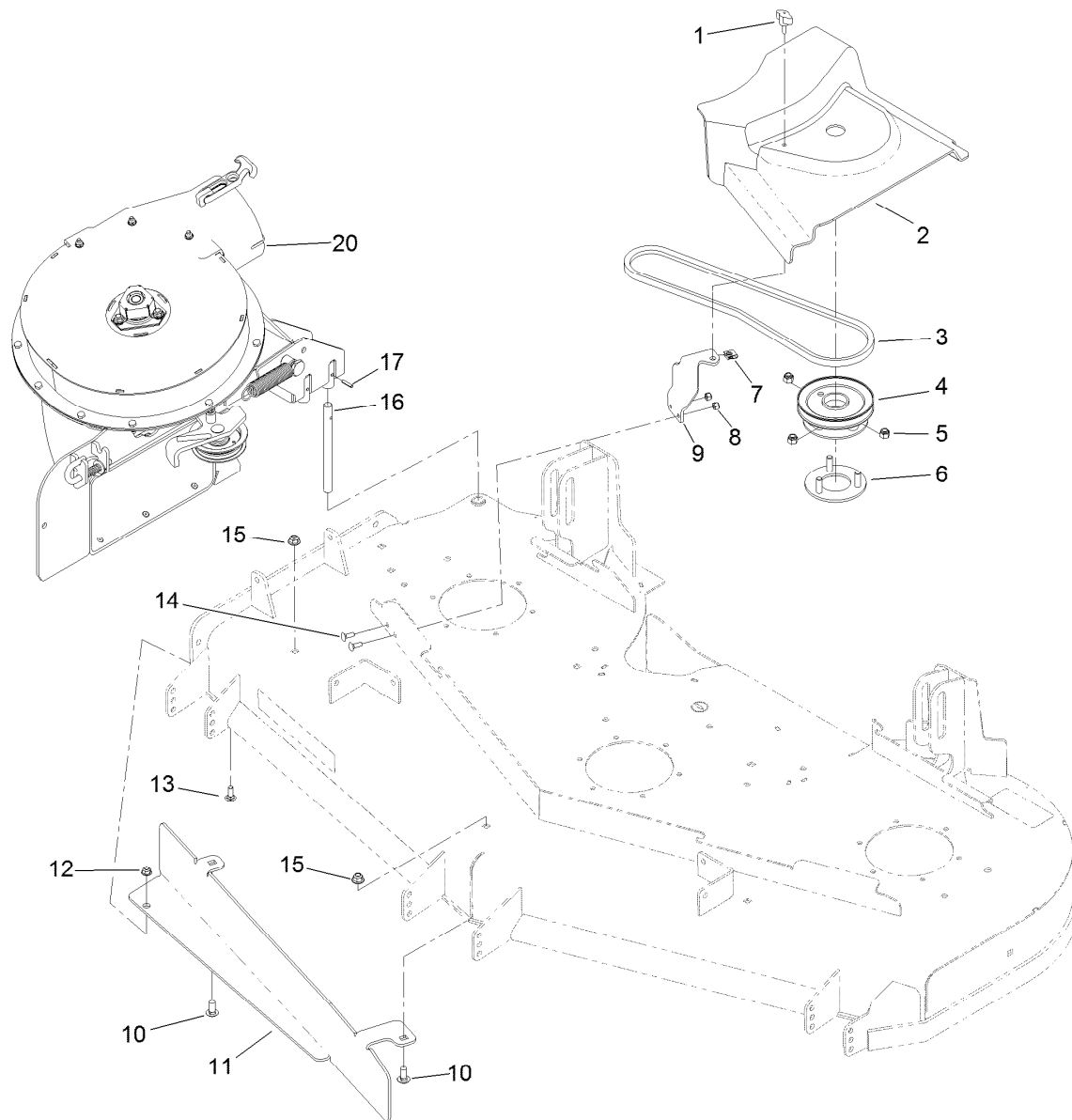
**TTH:** torx truss head

# Contents

Blower and Drive Assembly ..... 4

Idler Assembly ..... 5

Blower Assembly ..... 6

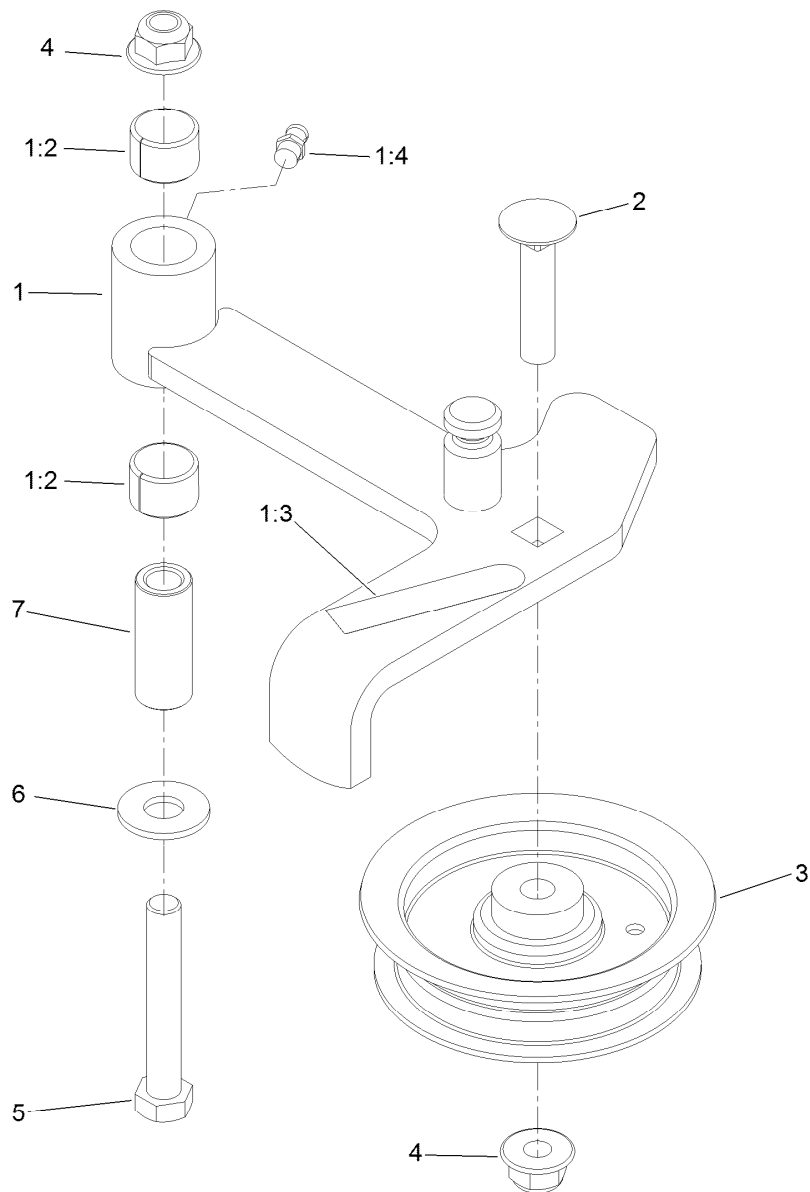


## Blower and Drive Assembly

Ref.	Part Number	Qty.	Description
1	98-8332	1	Knob
2	117-8644	1	Cover-Belt
3	120-2545	1	Belt-V
4	112-8670-03	1	Pulley ASM-Blower
5	3296-39	3	Nut-Lock, NI
6	121-3207	1	Pulley Mount ASM
7	609900	1	Nut-Speed
8	3296-42	2	Nut-Lock, NI
9	117-0342-01	1	Bracket-Cover, Belt

Ref.	Part Number	Qty.	Description
10	3231-27	2	Screw-CARR
11	120-3251-01	1	Baffle-Bagger
12	104-8300	1	Nut-Flange, NI
13	3230-16	1	Screw-CARR
14	3229-1	2	Screw-CARR
15	104-8301	2	Nut-Flange, NI
16	1-353050	1	Shaft-Catcher, Grass
17	1-806323	1	Pin-Roll
20		1	E-Z Vac Blower ASM ●

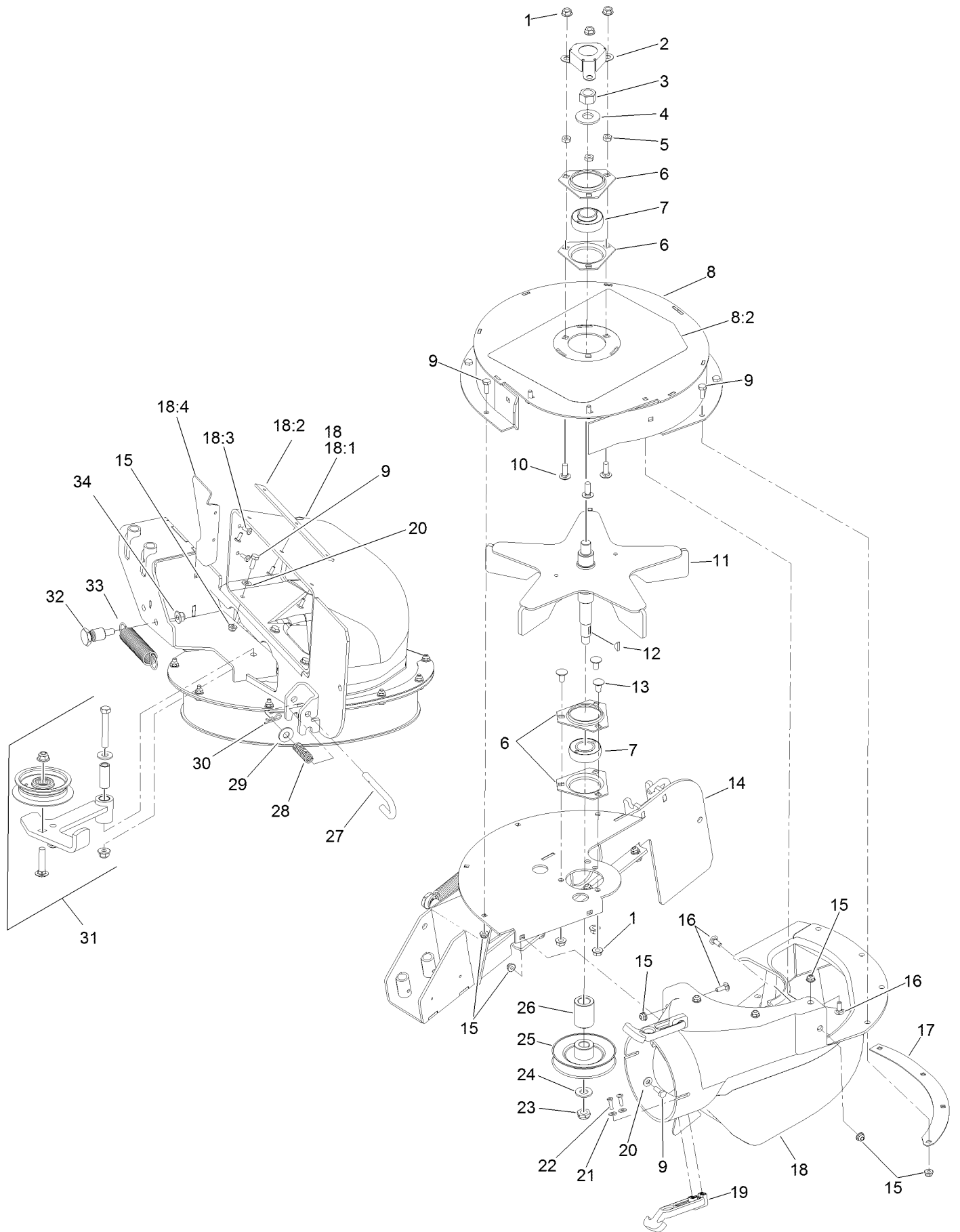
● Not serviced separately



## Idler Assembly

Ref.	Part Number	Qty.	Description
1	117-8638	1	Idler Arm ASM
1:2	1-653600	2	Bearing
1:3	1-653558	1	Decal-Hot Sheave
1:4	302-19	1	Fitting-Grease
2	3231-5	1	Screw-CARR
3	103-1103	1	Idler-Flat
4	104-8301	2	Nut-Flange, NI
5	323-12	1	Screw-HH
6	3256-4	1	Washer-Flat
7	1-603044	1	Bushing

# Blower Assembly



## Blower Assembly (continued)

<i>Ref.</i>	<i>Part Number</i>	<i>Qty.</i>	<i>Description</i>	<i>Ref.</i>	<i>Part Number</i>	<i>Qty.</i>	<i>Description</i>
1	32128-20	6	Nut-HF	18:2	103-4752-03	1	Plate-Reinforcement, Small
2	116-4776	1	Cover-Nut	18:3	114439	5	Rivet-Pop
3	3219-6	1	Nut-Hex	18:4	116-6486-03	1	Plate-Filler
4	1-513208	1	Washer-Spring	19	103-4080	2	Latch-Rubber
5	3218-2	3	Nut-Jam	20	3256-22	5	Washer-Flat
6	1-513013	4	Housing-Flange	21	3256-14	4	Washer-Flat
7	1-653346	2	Bearing-SPH	22	3290-500	4	Screw-PPH
8	121-3221	1	Upper Housing ASM	23	3296-28	1	Nut-Lock, NI
8:2	121-3212	1	Decal-Warning, Blower	24	3256-26	1	Washer-Flat
9	321-4	13	Screw-HH	25	112-2345	1	Pulley
10	3230-10	3	Screw-CARR	26	1-653365	1	Spacer
11	103-3815	1	Impeller	27	116-4356	1	Pin-Latch
12	3257-32	1	Key-Woodruff	28	109-7694	1	Spring-Compression
13	3230-18	3	Screw-CARR	29	3256-4	1	Washer-Flat
14	120-2542-03	1	Blower Frame ASM	30	3290-307	1	Pin-Hair
15	104-7201	18	Nut-HF	31		1	Idler Arm ASM ●
16	3229-1	5	Screw-CARR	32	117-8625	1	Anchor-Spring
17	116-4434-03	1	Plate-Backing, Blower	33	1-603693	1	Spring-Extension
18	116-6487	1	Small Blower Chute ASM	34	104-8301	1	Nut-Flange, NI
18:1	116-4991	1	Chute-Blower, Small				

● Not serviced separately



**Count on it.**