



Proline

**14 HP Kohler Mid-Size
Hydro Traction Unit**

Model No. 30187 – 790001 & Up

PROTOTYPE

Parts Catalog

ORDERING REPLACEMENT PARTS

To order replacement parts, please supply: the part number, the quantity, and the description of each part desired.

Contents

Description	Page	Description	Page
14 HP Engine & Oil Cooler	1	Blower Housing & Baffles	12
Pivot & Linkage	2	Starter System	13
Handle Assembly	3	Air Cleaner	14
Control Panel Assembly	4	Carburetor	15
Fuel Tank, Hydro Pump & PTO	5	Engine Controls	16
Hydraulic & Drive System	6	Exhaust	17
Battery	7	Hydraulic Pump Assembly No. 95-1538	19
Crankcase	8	Traction Drive Motor (Torquemotor)	20
Oil Pan / Lubrication	9	Electric Schematic	21
Cylinder Head, Valve & Breather	10	Hydraulic Schematic	22
Ignition / Electrical	11	Note:	

Part Description Abbreviations

Part descriptions in this catalog may include the following abbreviations.

Abbreviation	Meaning	Abbreviation	Meaning
AR	as required	HWHTF	hex washer head thread forming
ASM	assembly	INC	incorporated
CARR	carriage	LH	left hand
DEG	degrees	PH	pan head
FH	flat head	PPH	Phillips pan head
GA	gauge	PTO	power take off
HF	hex flange	RH	right hand
HFV	hex flange washer	SFH	slotted fillister head
HH	hex head	SH	square head
HHF	hex head flange	SHWH	slotted hex washer head
HHST	hex head self tapping	SPH	slotted pan head
HJ	hex jam	STD	standard
HOC	height-of-cut	TAP	self tapping
HS	hex socket	TH	truss head
HSBH	hex socket button head	TTH	Torx truss head
HSFH	hex socket flat head	WH	wing head
HSH	hex socket head		
HWH	hex washer head		

Important Format Explanations

This catalog uses special formats to convey information in illustrations and parts lists. Specifically, one format is used in conjunction with service assemblies and another with quantities associated with reference numbers.

Service Assemblies

Parts within service assemblies have reference numbers in the form $X:Y$. X is the reference number of the service assembly and Y is a sequential number unique to each part within the service assembly.

For example, a wheel assembly might be identified by reference number 6, the tire by 6:1, the valve by 6:2, and the wheel by 6:3. When you order the assembly identified by reference number 6, you receive all parts identified by reference numbers 6:1, 6:2, and 6:3. However, you may also order any part individually.

Reference numbers of this type appear in part lists and as callouts in illustrations.

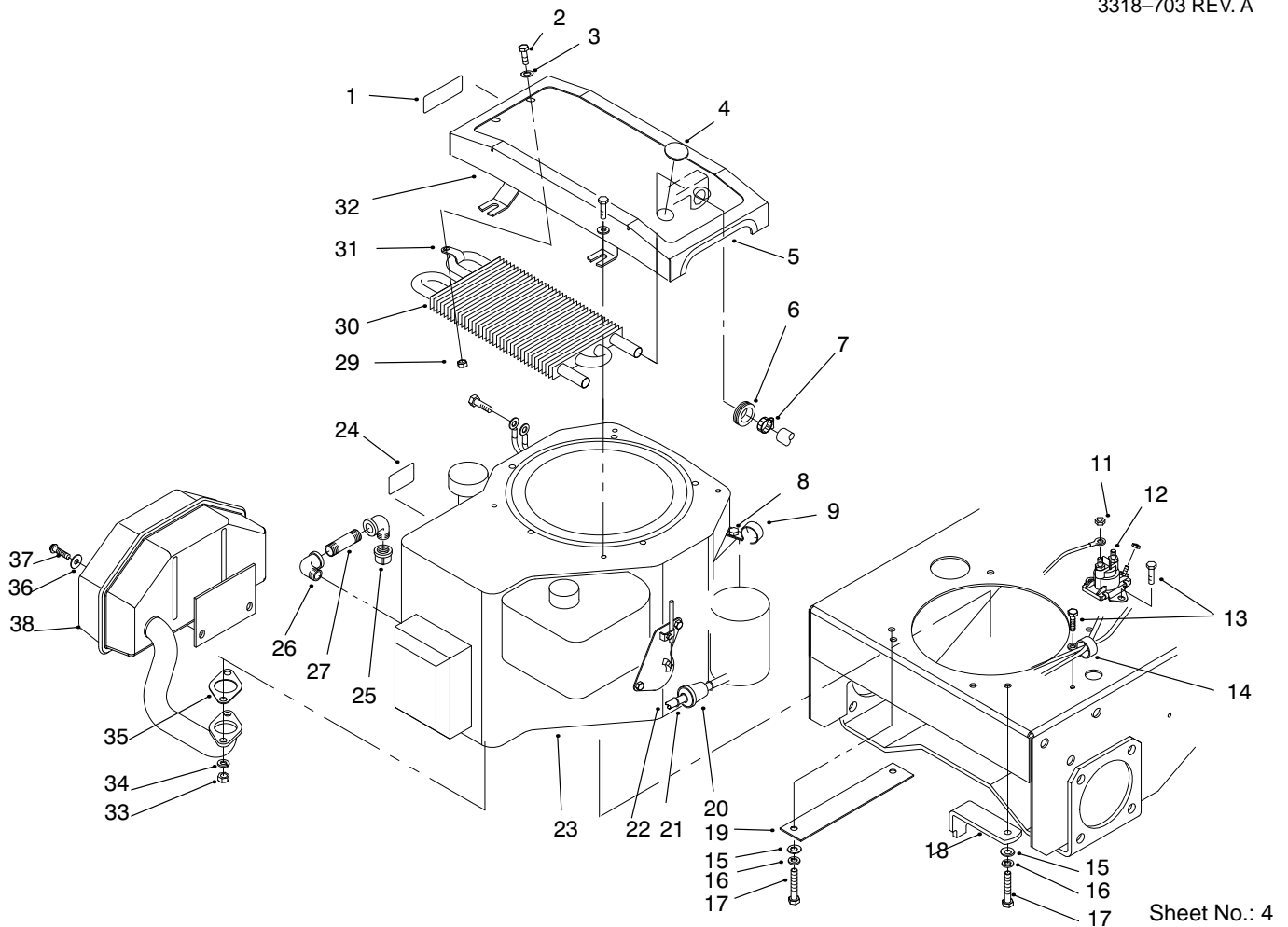
PROTOTYPE

Reference Numbers with Quantities

Illustrations may have a quantity in parentheses next to a reference number, in the form $X (Y)$. X is the reference number. Y in parentheses is the quantity of the part identified by the reference number.

For example, the illustration callout 4 (2) indicates that two parts are used in that instance.

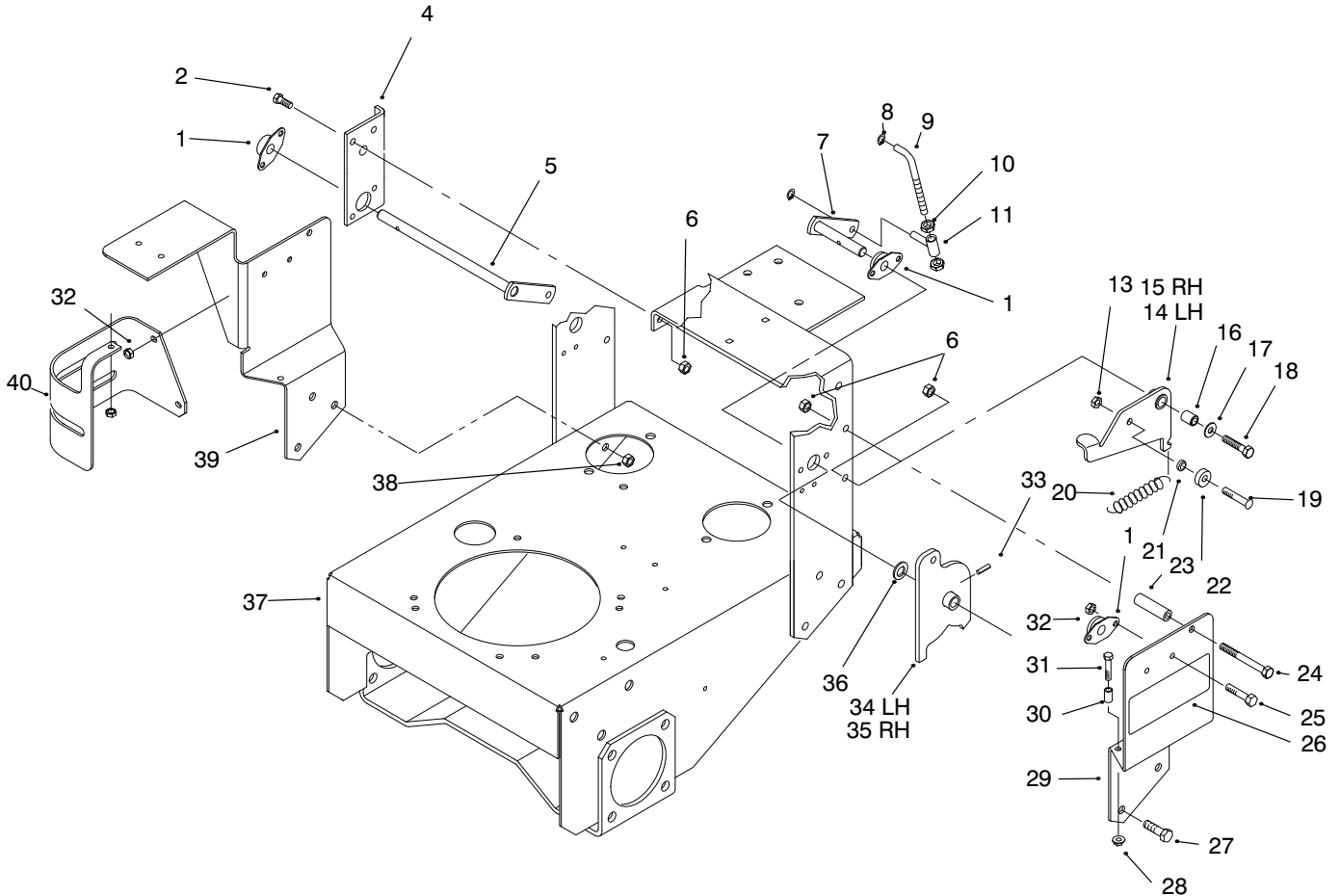
PROTOTYPE



Sheet No.: 4

14 HP Engine & Oil Cooler

Ref. No.	Part No.	Qty.	Description	Ref. No.	Part No.	Qty.	Description
1	95-2814	1	Decal-Fuel Shut-Off	29	3296-42	2	Nut-Lock
2	3256-1	6	Washer-Flat	30	82-4220	1	Cooler-Oil
3	321-39	6	Screw-HH	31	2412-134	2	Clamp R
4	2410-71	2	Cap-Plug	32	82-4500-03	1	Mount-Cooler
5	29-0642	1	Jiffy-Trim	33	93-7034	2	Nut (Supplied w/Eng)
6	240-9	2	Grommet	34	3253-4	2	Washer-Lock
7	2412-136	2	Clamp	35	93-7032	1	Gasket (Supplied w/Eng)
8	32104-76	1	Screw-Self TAP	36	3256-78	2	Washer-Plain
9	2412-106	1	R Clamp	37	93-7033	2	Screa
11	32149-2	2	Nut-Hex Lock	38	93-7031	1	Muffler (Supplied w/Eng)
12	92-9845	1	Solenoid				
13	32144-4	3	Screw-TAP				
14	2412-106	1	R Clamp				
15	3256-23	4	Washer-Flat				
16	3253-4	A/R	Washer-Lock				
17	57-6380	4	Screw-HH				
18	51-4540-03	1	Retainer-Clutch				
19	74-0930-01	1	Guard-Pulley				
20	56-6360	1	Filter-Fuel				
21	2412-98	2	Clamp-Hose				
22	47-2964	1	Hose-Gas				
23	74-0761	1	Engine-Kohler				
24	63-8440	1	Decal-Hot Surface				
25	288-4	1	Cap-Pipe				
26	74-0950	2	Elbow				
27	289-51	1	Nipple-Pipe				

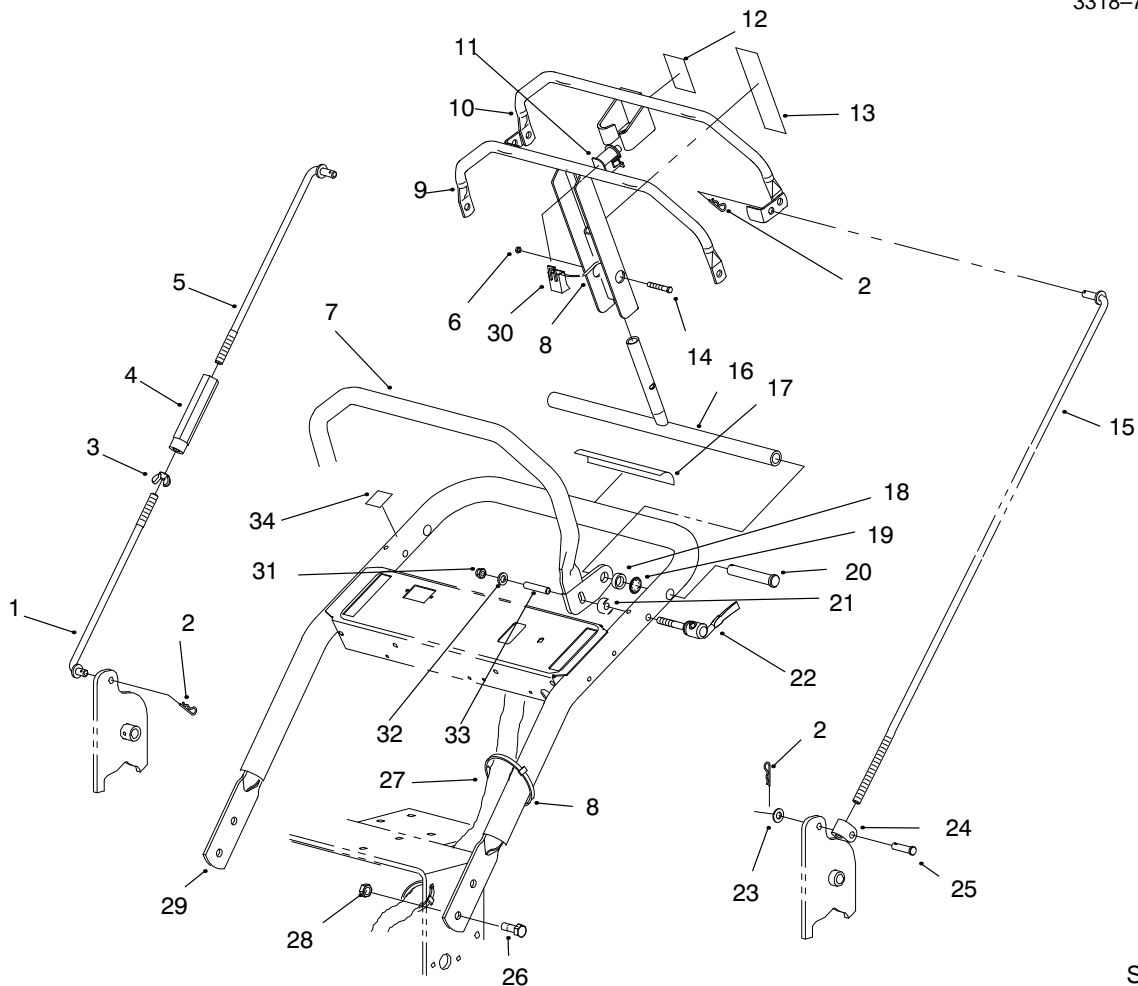


Sheet No.: 5

Pivot & Linkage

Ref. No.	Part No.	Qty.	Description
1	82-4130	4	Bearing
2	322-5	2	Screw-HH
3	3290-378	A/R	Tie-Cable
4	82-4210-01	1	Bracket-Bushing
5	94-9059	1	Lever-Pivot RH
6	3296-29	6	Nut-Lock
7	94-9057	1	Lever-Pivot LH
8	32151-3	4	Ring-Retaining
9	94-9093	2	Rod-Link
10	3218-2	4	Nut-Hex Jam
11	94-9062	2	Sleeve
13	3296-47	2	Nut-Lock
14	82-4330-01	1	Arm-Detent LH
15	82-4340-01	1	Arm-Detent RH
16	82-4370	2	Bushing-Arm
17	3256-23	2	Washer-Flat
18	322-7	2	Screw-HH
19	3274-32	2	Screw-HH
20	82-4160	2	Spring-Detent
21	82-4240	2	Spacer-Bearing
22	251-259	2	Bearing-Ball
23	82-3920	2	Stop-Reverse
24	322-14	2	Screw-HH
25	321-3	11	Screw-HH
26	82-4600	2	Decal-Hydro
27	323-6	6	Screw-HH

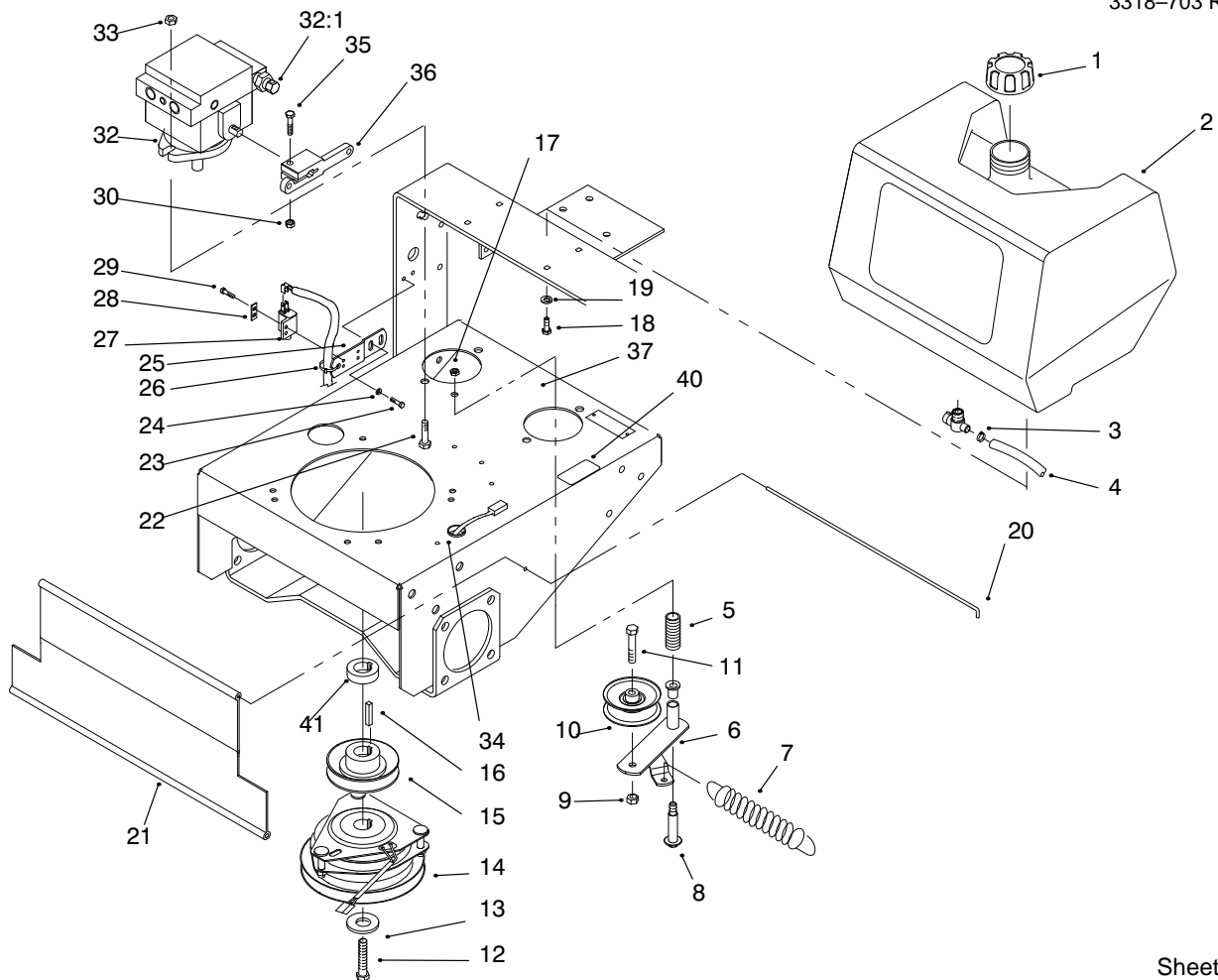
Ref. No.	Part No.	Qty.	Description
28	32128-10	2	Nut-Lock HHF
29	95-1530-01	1	Bracket-Pivot
30	95-1516	2	Spacer-Tubular
31	321-8	2	Screw-HH
32	3296-42	11	Nut-Lock
33	32121-4	2	Pin-Roll
34	94-9054-01	1	Arm-Pivot LH
35	94-9061-01	1	Arm-Pivot RH
36	257-5	2	Washer-Thrust
37	94-9096-01	1	Frame ASM
38	3296-39	6	Nut-Lock
39	95-1522-01	1	Bracket-Pivot
40	95-5868-01	1	Guard-Filter



Sheet No.: 6

Handle Assembly

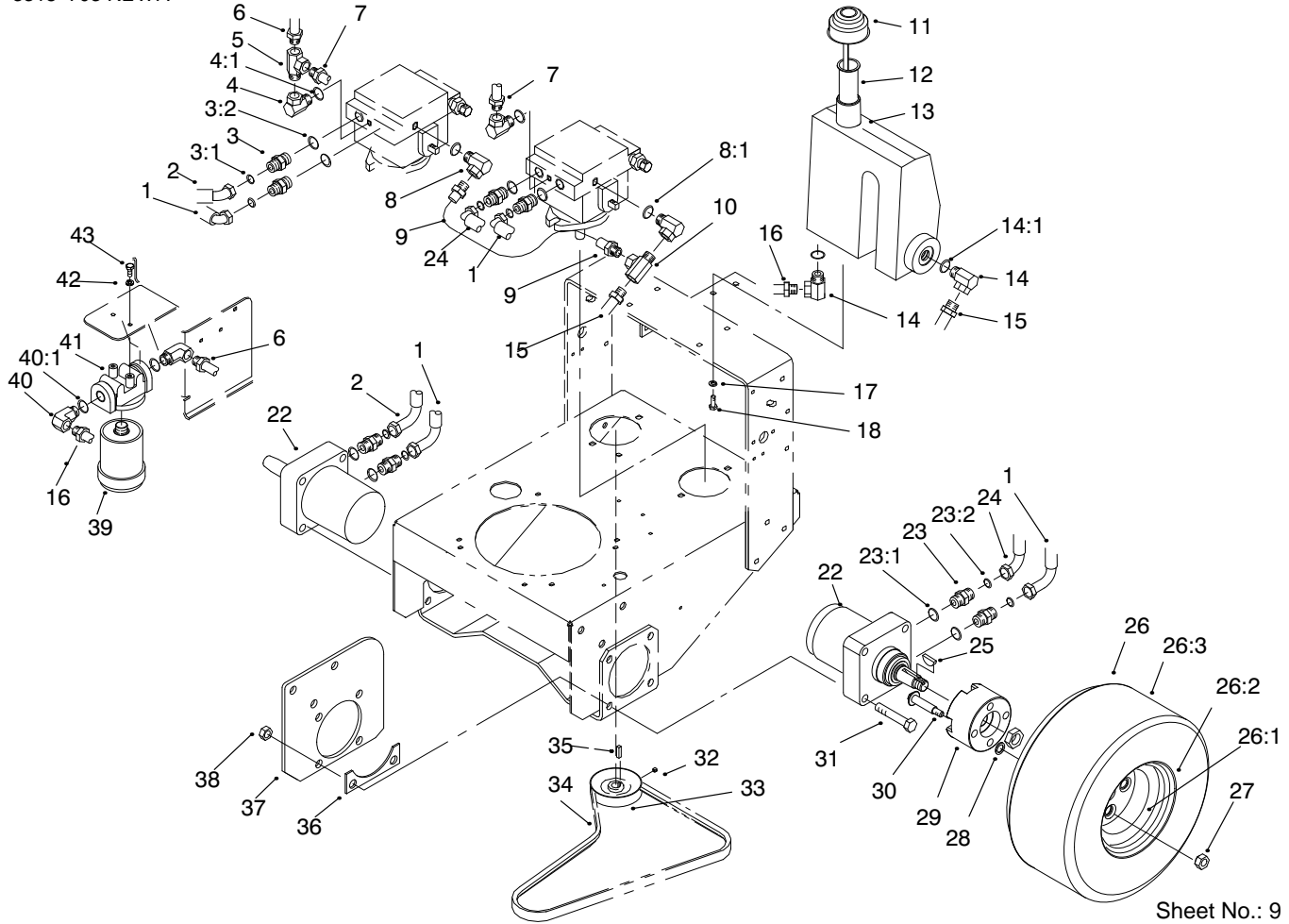
Ref. No.	Part No.	Qty.	Description	Ref. No.	Part No.	Qty.	Description
1	95-1506	1	Rod-Control	26	3234-11	4	Screw-HHF
2	3290-307	4	Pin-Cotter	27	95-2807	1	Harness-Wire
3	32103-3	1	Nut-Wing	28	32128-21	4	Nut-Hfh
4	95-1504	1	Turnbuckle	29	95-5856-03	1	Handle-Upper
5	95-1505	1	Rod-Control	30	218-595	1	Connector-Body
6	3296-2	1	Nut Lock	31	33023-00	2	Nut-Lock Ni
7	95-1536	1	Handle ASM	32	3290-436	2	Washer-Belleville
8	3290-378	3	Tie-Cable	33	95-5854	2	Sleeve
9	95-1507-03	1	Control Bar ASM	34	95-5862	1	Decal-Speed Lock
10	95-1510-03	1	Bail ASM				
11	82-2190	1	Switch-Bail				
12	95-1523	1	Decal-Traction Drive				
13	95-1524	1	Decal-T Bar				
14	32105-12	1	Screw-Hex				
15	94-9095	1	Rod-Control				
16	95-1513-03	1	Pivot ASM				
17	82-4590	1	Decal-Slope Warning				
18	95-5855-03	2	Spacer-Pivot				
19	32151-80	2	Ring-Push On				
20	283-55	2	Pin-Clevis				
21	82-3840	2	Spacer-Latch				
22	95-5853	2	Lock ASM-Quick Release				
23	3256-23	1	Washer-Flat				
24	74-0521	1	Rod-Fitting				
25	283-6	1	Pin-Clevis				



Sheet No.: 8

Fuel Tank, Hydro Pump & PTO

Ref. No.	Part No.	Qty.	Description	Ref. No.	Part No.	Qty.	Description
1	55-3570	1	Cap-Fuel	27	65-7410	2	Switch-Single Pole
2	95-2802	1	Tank-Fuel	28	82-4570	2	Plate-Switch
3	2412-98	2	Clamp-Hose	29	32144-1	4	Screw-HH
4	47-2982	1	Hose-Fuel	30	3296-29	2	Nut-Lock
5	88-1880	1	Spring-Compression	32	95-1538	2	Hydraulic Pump ASM
6	86-4770-03	1	Lever-Idler	32:1	95-1539	2	Valve ASM
7	68-2190	1	Spring-Extension	33	32128-42	4	Nut-Hex Flange
8	27-6230	1	Bolt-Wheel	34	237-124	1	Grommet
9	3296-39	1	Nut-Lock	35	322-7	2	Screw-HH
10	62-4540-03	1	Pulley-Idler	36	82-3790	2	Arm-Control
11	323-9	1	Screw-HH	37	95-1543	1	Decal-Valve Adjust
12	57-6360	1	Screw-HH				
13	112843	1	Washer-PTO				
14	54-3200	1	Clutch ASM				
15	44-5940	1	Pulley-Drive				
16	608006	1	Key				
17	3296-6	1	Nut-Lock				
18	322-3	4	Screw-HH				
19	3253-4	4	Washer-Lock				
20	95-1529	1	Rod-Shield				
21	95-1526	1	Trailing Shield				
22	324-5	4	Screw-HH				
23	32144-3	4	Screw-HWH				
24	3256-1	4	Washer-Flat				
25	82-4580-03	2	Bracket-Neutral				
26	3290-378	2	Tie-Cable				

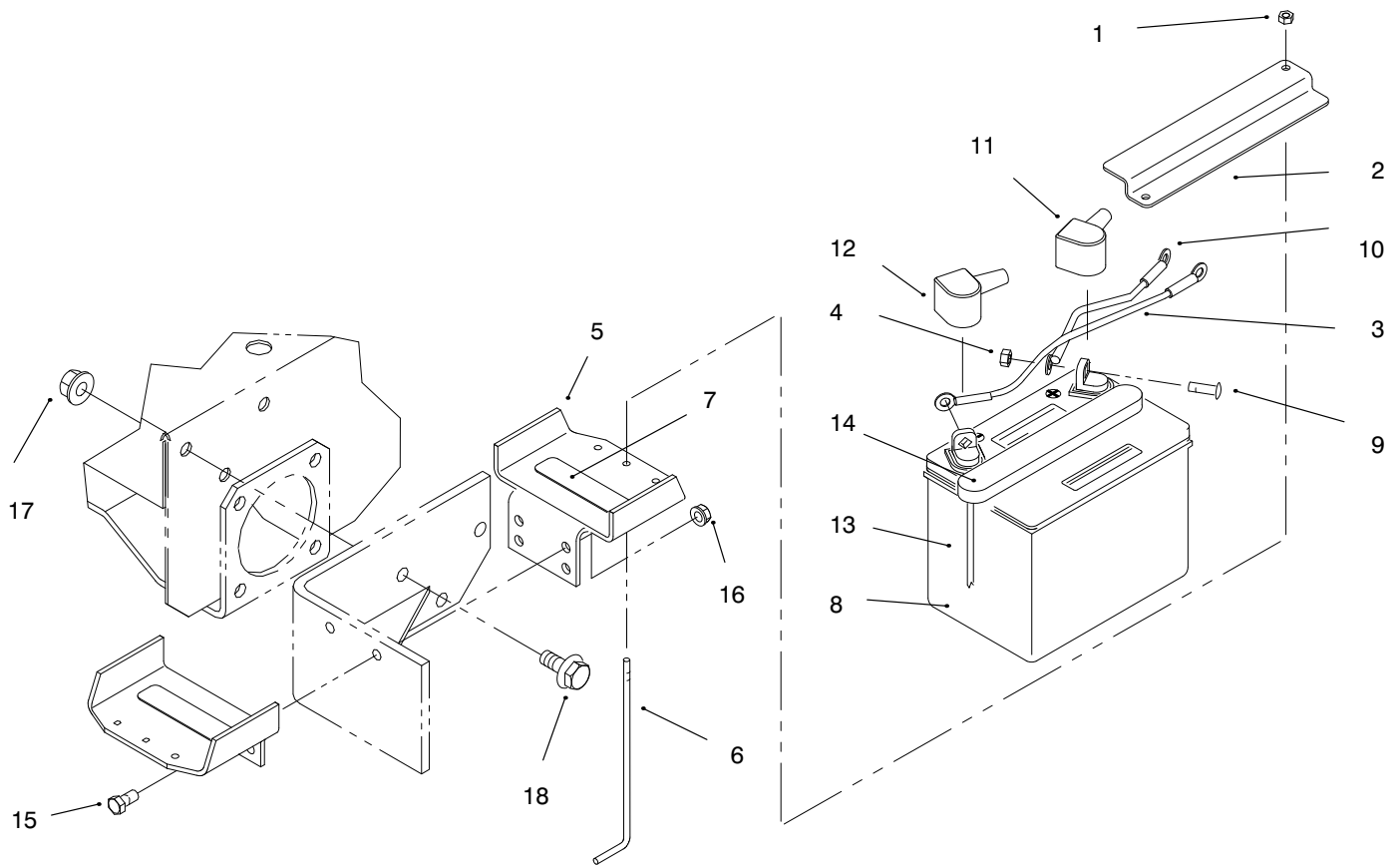


Sheet No.: 9

Hydraulic & Drive System

Ref. No.	Part No.	Qty.	Description
1	82-4550	2	ASM-Hose
2	82-4540	1	ASM-Hose
3	340-4	4	Fitting-Hydraulic
3:1	237-30	4	O-Ring
3:2	237-79	4	O-Ring
4	354-116	2	Fitting-Hydraulic
5	2815-16	1	Fitting-Hydraulic
6	82-4180	1	ASM-Hose
7	82-4170	1	ASM-Hose
8	354-115	2	Fitting-Hydraulic
8:1	237-42	A/R	O-Ring
9	82-4201	1	ASM-Hose
10	2815-15	1	Fitting-Hydraulic
11	76-0200	1	Oil Cap ASM
12	29-0590	1	Screen-Filler
13	95-1532	1	Reservoir-Oil
14	354-118	2	Fitting-Hydraulic
15	82-4192	2	ASM-Hose
16	82-4200	1	ASM-Hose
17	3253-4	3	Washer-Lock
18	322-3	3	Screw-HH
22	82-8230	2	Motor-Wheel
23	340-6	4	Fitting-Hydraulic
23:1	237-80	4	O-Ring
23:2	237-30	4	O-Ring
24	82-4560	1	ASM-Hose

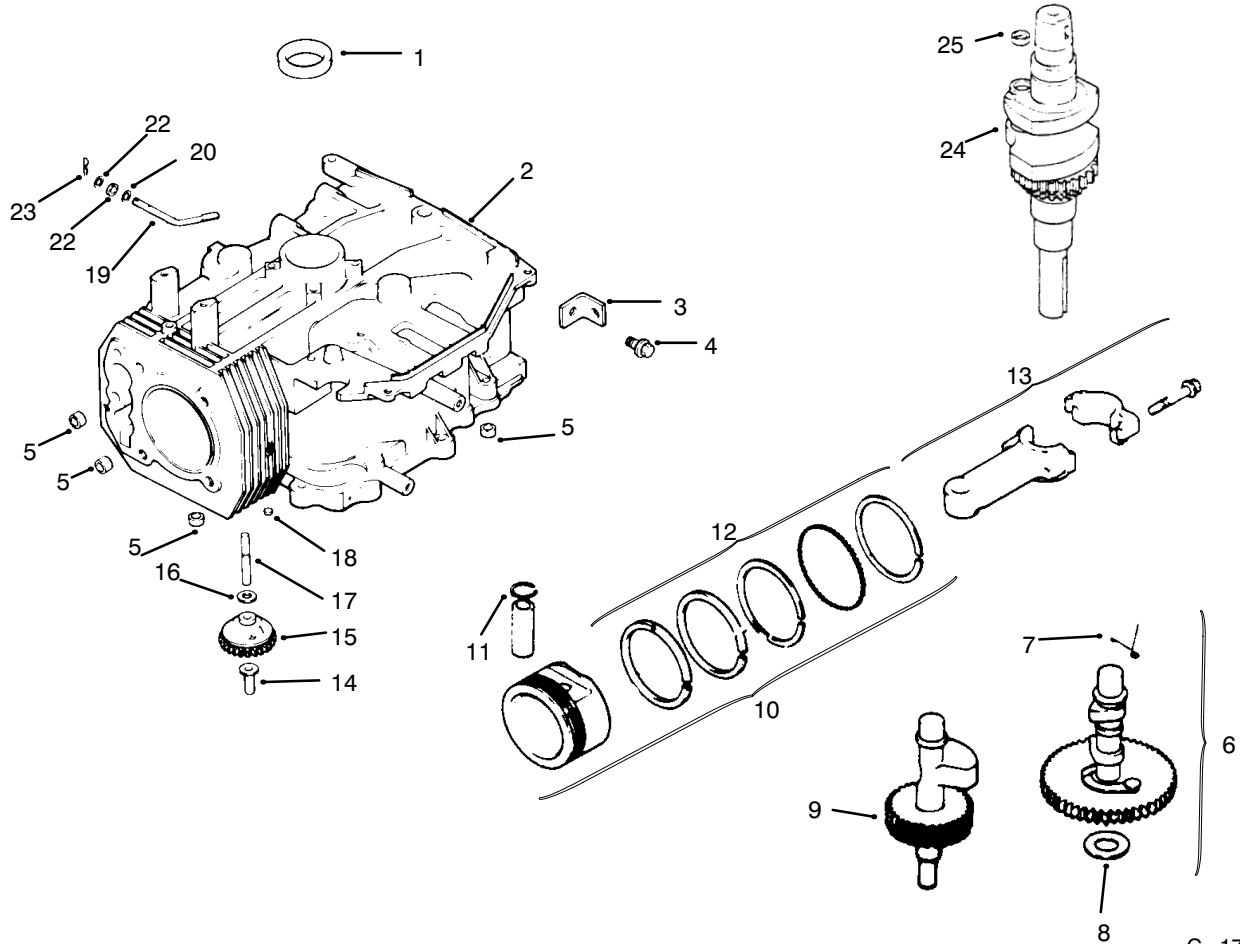
Ref. No.	Part No.	Qty.	Description
25	3257-8	2	Key-Woodruff
26	94-9664	2	ASM-Wheel & Tire
26:1	232-27	2	Valve Stem & Cap Assembly
26:2	242-87	2	Wheel
26:3	231-117	2	Tire-15x6
27	242-50	8	Nut-Lug
28	32112-17	8	Pushnut
29	82-3830	2	Hub-Wheel
30	3213-8	8	Screw-HH
31	325-11	8	Screw-HH
32	3241-5	4	Set Screw
33	95-1528	2	Pulley-Pump
34	82-4110	1	V Belt
35	80-6090	2	Key-Square
36	86-4740-01	2	Spacer-Frame
37	86-4730-01	2	Plate-Frame
38	3296-23	8	Nut-Lock
39	67-8110	2	Filter-Oil
40	354-117	2	Fitting-Hydraulic
40:1	237-79	2	O-Ring
41	86-9080	1	Head-Filter
42	3253-3	2	Washer-Lock
43	321-3	2	Screw-HH



Sheet No.: 10

Battery

Ref. No.	Part No.	Qty.	Description	Ref. No.	Part No.	Qty.	Description
1	3296-42	2	Nut-Lock				
2	82-4620-01	1	Strap-Battery				
3	54-3094	1	ASM-Wire				
4	32149-1	2	Nut-Keps				
5	92-2350-01	2	Holder-Battery				
6	12-5950	2	Rod-Support				
7	51-4210	2	Pad-Tank				
8	82-4640	1	Battery-12 Volt				
9	322-3	2	Screw-HH				
10	93-1189	1	Wire-Red				
11	77-0981	1	Boot-Terminal				
12	77-0980	1	Boot-Terminal				
13	68-3810	1	Tube-Vent				
14	84-1830	1	Cap-Battery				
15	323-9	2	Screw-HH				
16	3296-39	2	Nut-Lock				
17	32128-23	6	Nut-Lock				
18	3234-32	6	Screw-HH				



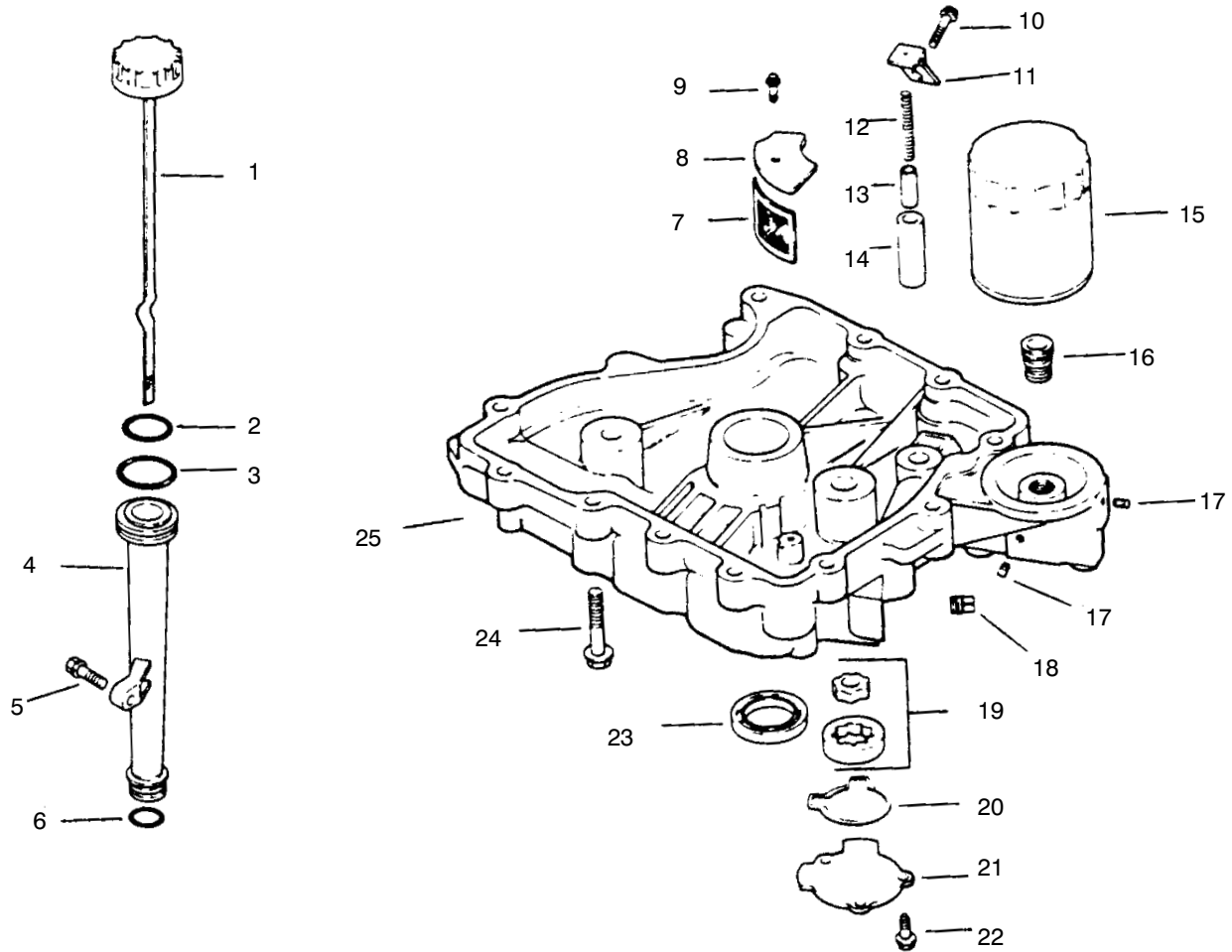
C-1792

Crankcase

Ref. No.	Part No.	Description	No. Used
1	12 032 03	Seal - Crankshaft	1
2	12 522 21	Short Block	1
3	12 445 02	Strap - Lifting	1
4	M-0839025	Screw - Lifting Strap	1
5	12 380 03	Dowel - Locating	4
6	12 755 49	Camshaft Assembly	1
7	12 089 18	Spring - Actuating	1
8	12 422 08	Shim - Camshaft	1
*	12 422 09	Shim - Camshaft	A/R
*	12 422 10	Shim - Camshaft	A/R
*	12 422 11	Shim - Camshaft	A/R
*	12 422 12	Shim - Camshaft	A/R
*	12 422 13	Shim - Camshaft	A/R
*	12 422 07	Shim - Camshaft	A/R
9	12 144 19	Shaft - Balance	1
10	12 847 01	Piston W/Ring Set (Std.)	1
*	12 847 02	Piston W/Ring Set (.25)	1
*	12 847 03	Piston W/Ring Set (.50)	1
11	12 018 02	Retainer - Piston Pin	2

Ref. No.	Part No.	Description	No. Used
12	12 108 01	Ring Set (Std.)	1
*	12 108 02	Ring Set (.25)	1
*	12 108 03	Ring Set (.50)	1
13	12 067 05	Connecting Rod (Std.)	1
*	12 067 06	Connecting Rod (.25)	1
14	12 380 01	Pin - Governor Regulating	1
15	12 043 05	Gear - Governor Ass'y	1
16	M-0631005	Washer - Governor Gear	1
17	12 144 02	Shaft - Governor Gear	1
18	52 139 09	Plug - Cap	1
19	12 144 01	Shaft - Governor Cross	1
20	X-25-102	Washer	1
21	12 032 01	Seal - Cross Shaft	1
22	SM-0631015	Washer - Governor Shaft	1
23	12 380 04	Pin - Governor Hitch	1
24	12 014 29	Crankshaft Assembly	1
25	12 139 01	Plug - Cup	1

*Not Illustrated



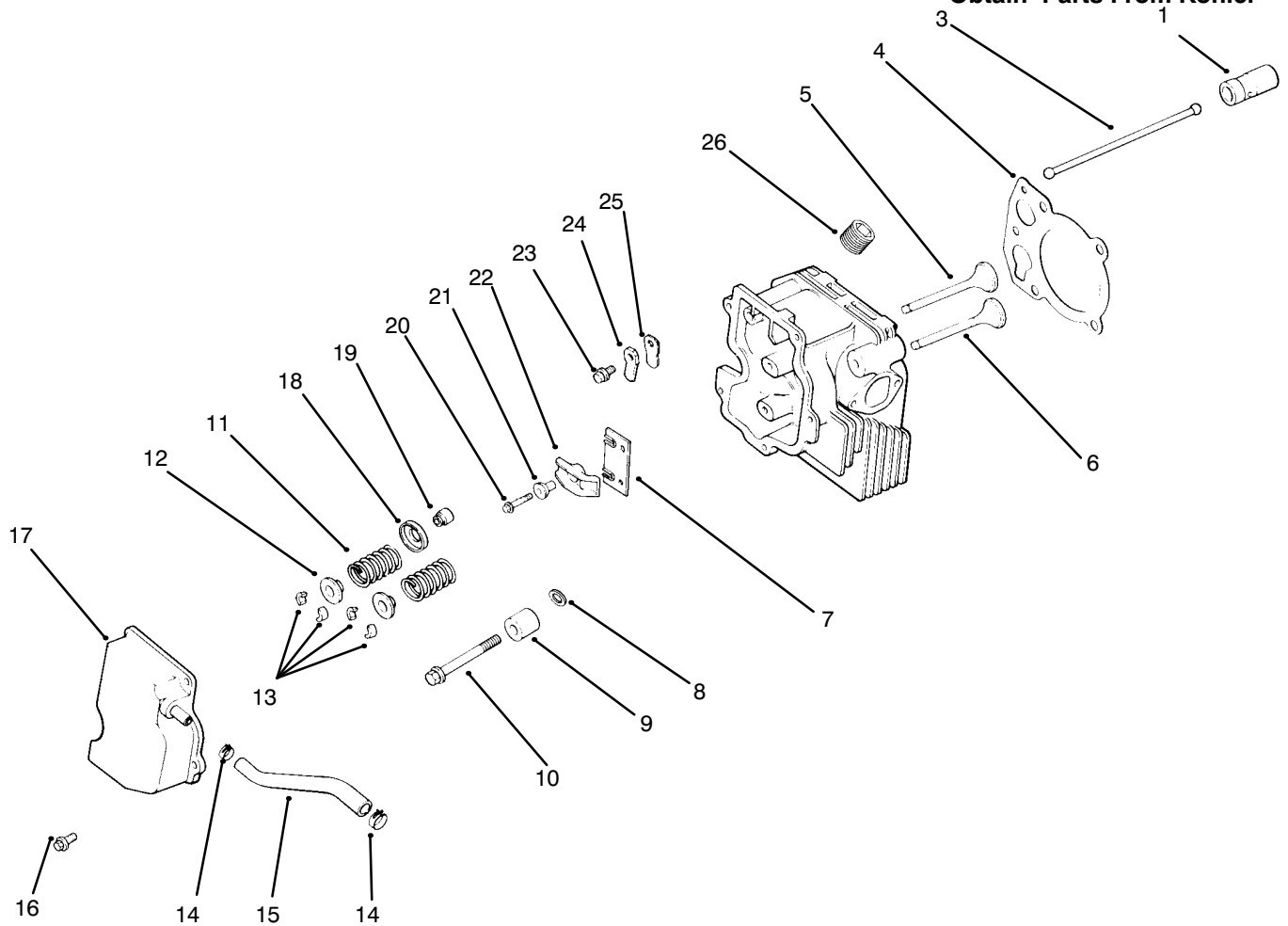
C-1794

Oil Pan / Lubrication

Ref. No.	Part No.	Description	No. Used
1	12 038 01	Dipstick Assembly	1
2	12 153 03	"O"Ring - Dipstick	1
3	12 153 02	"O"Ring - Upper Tube	1
4	12 123 04	Tube - Oil Fill	1
5	SM-0545020	Screw - Oil Fill Tube	1
6	12 153 01	"O"Ring - Lower Tube	2
7	25 162 07	Screen - Oil Pick Up	1
8	12 096 03	Cover - Oil Screen	1
9	SM-0545016	Screw	1
10	M-1039025	Screw	1
11	12 126 02	Bracket - Oil Pump	1
12	12 089 03	Spring - Oil Pump	1
13	12 462 01	Piston - Oil Pump	1

Ref. No.	Part No.	Description	No. Used
14	12 208 01	Relief Valve	1
15	52 050 02	Body - Oil Pump	1
16	12 136 01	Relief Valve	1
17	X-75-1	Filter - Oil	1
18	X-75-10	Adapter - Oil Filter	1
19	12 393 01	Plug - 1/8 N.P.T.F.	2
20	12 032 04	Plug - 3/8 N.P.T.F.	2
21	12 393 01	Pump - Oil Assembly	1
22	12 032 04	"O"Ring - Pump Cover	1
23	12 096 02	Cover - Oil Pump	1
24	SM-0545016	Screw	3
25	12 032 03	Seal - Oil (P.T.O.End)	1
*	SM-0839045	Screw - Oil Pan	11
	12 199 21	Pan - Oil	1
	25 755 13	Kit - Oil Fill Cap	1

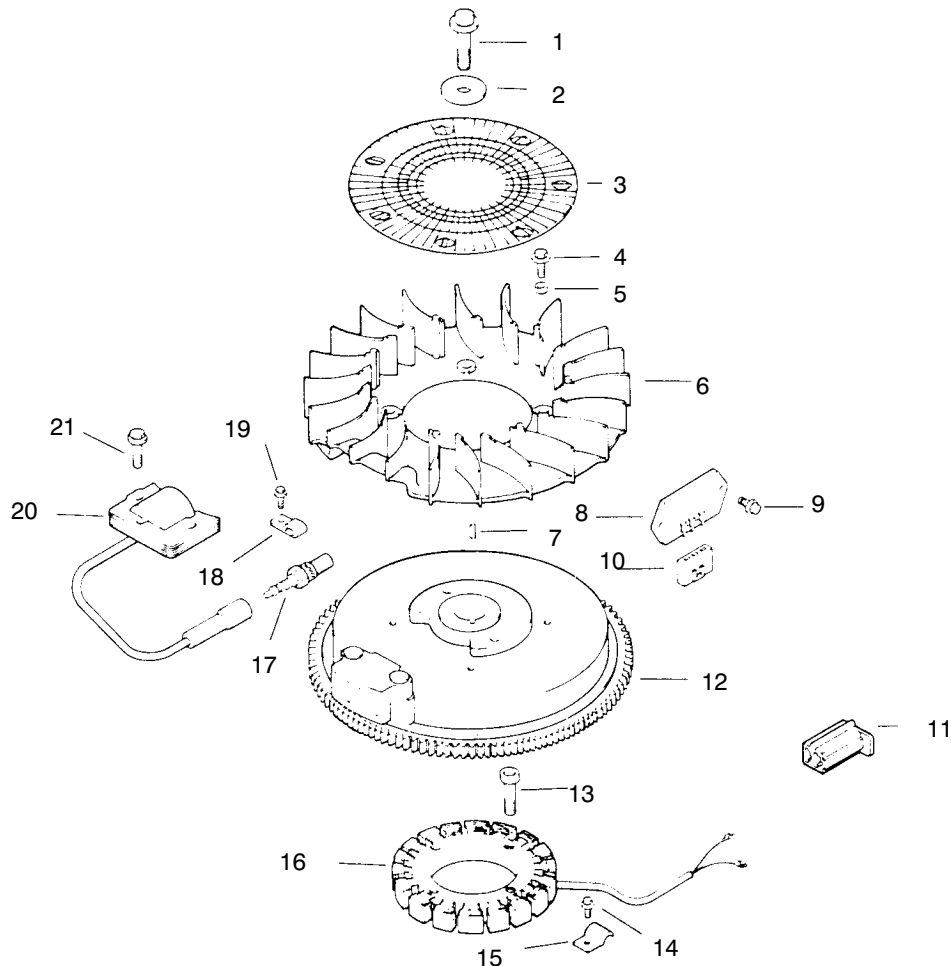
*Not Illustrated



Cylinder Head, Valve & Breather

Ref. No.	Part No.	Description	No. Used
1	12 351 01	Lifter - Valve	2
3	12 411 01	Rod - Push	2
4	12 041 08	Gasket - Cylinder Head	1
5	12 017 01	Valve - Intake (Std.)	1
*	12 017 02	Valve - Intake (.25)	1
6	12 016 01	Valve - Exhaust (Std)	1
*	12 016 02	Valve - Exhaust (.25)	1
7	12 146 13	Plate - Guide	1
8	12 468 05	Washer - Flat	1
9	12 112 13	Spacer - Head Bolt	1
10	12 086 15	Screw - Cylinder Head	5
11	12 089 01	Spring - Valve	1
12	12 173 01	Cap - Valve Spring	2
13	12 755 03	Kit - Retainer	2
14	X-426-9	Clamp - Hose	2

Ref. No.	Part No.	Description	No. Used
15	12 326 03	Hose - Breather	1
16	M-0645020	Screw - Valve Cover	3
17	12 096 07	Cover - Valve W/Nipple	1
18	235011	Retainer - Spring	2
19	24 032 05	Seal - Valve Stem	1
20	M-0640034	Screw - Rocker Bridge	2
21	24 194 01	Pivot - Rocker Arm	2
22	24 186 03	Arm - Rocker	2
23	M-0545010	Screw - Breather Reed	1
24	12 018 01	Retainer - Breather Reed	1
25	12 402 02	Reed - Breather	1
26	X-75-23	Plug	1
*	12 755 58	Kit - Cylinder Head (Incl. Ref.#3-13, 18-22 & 26)	1

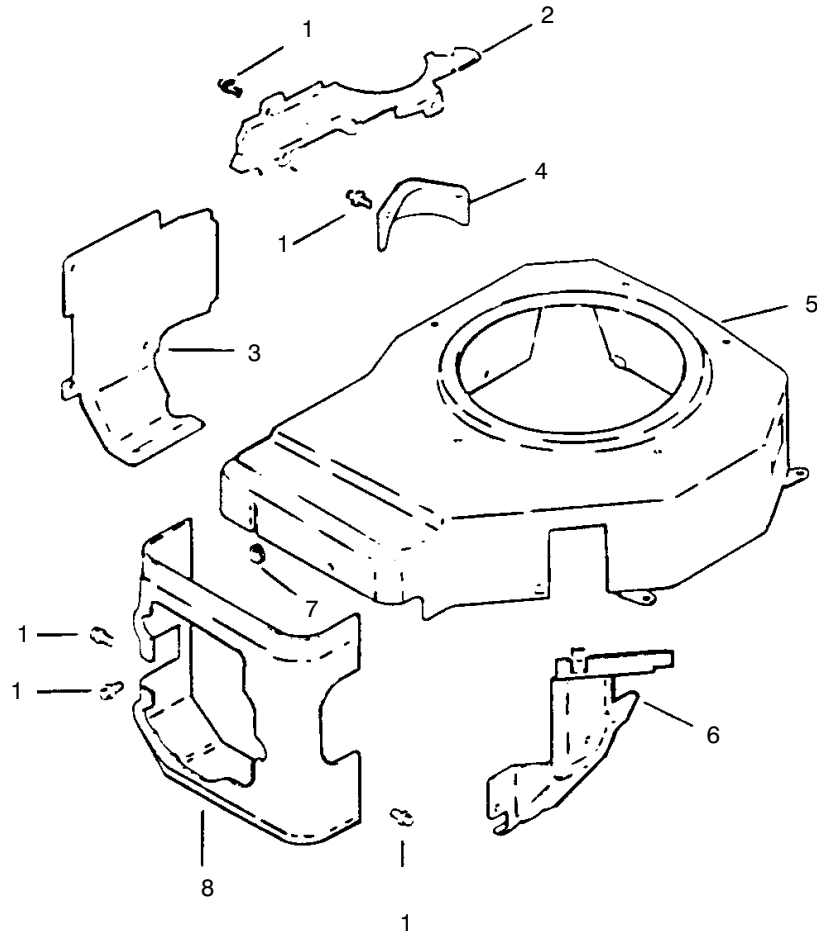


C-1796

Ignition / Electrical

Ref. No.	Part No.	Description	No. Used	Ref. No.	Part No.	Description	No. Used
1	12 086 14	Screw - Flywheel	1	14	M-0545010	Screw - Stator Harness	1
2	12 486 03	Washer - Flywheel	1	15	12 154 02	Clip - Stator Harness	1
3	12 162 03	Screen - Grass	1	16	24 085 01	Stator - 15 Amp.	1
4	M-0639016	Screw - Fan	4	17	12 132 02	Spark Plug	1
5	12 112 01	Spacer - Fan	4	18	X-728-1	Clip - Kill Lead	1
6	12 157 01	Fan	1	19	M-0545010	Screw - Lead Clip	1
7	X-42-15	Key	1	20	12 584 02	Module - Ignition	1
8	12 403 01	Rectifier - Unregulated	1	21	SM-0545020	Screw - Ignition Module	2
9	M-0639016	Screw - Regulator	2		25 518 05	Lead - Black, Rectifier to Connector(5" - 14 Gauge	1
10	236602	Connector - Regulator	1	*		Lead - White, Ground to Kill (9.5" - 18 Gauge)	1
11	41 155 03	Connector	1				
12	12 025 16	Flywheel Assembly	1				
13	M-0548025	Screw - Stator	4				

*Not Illustrated



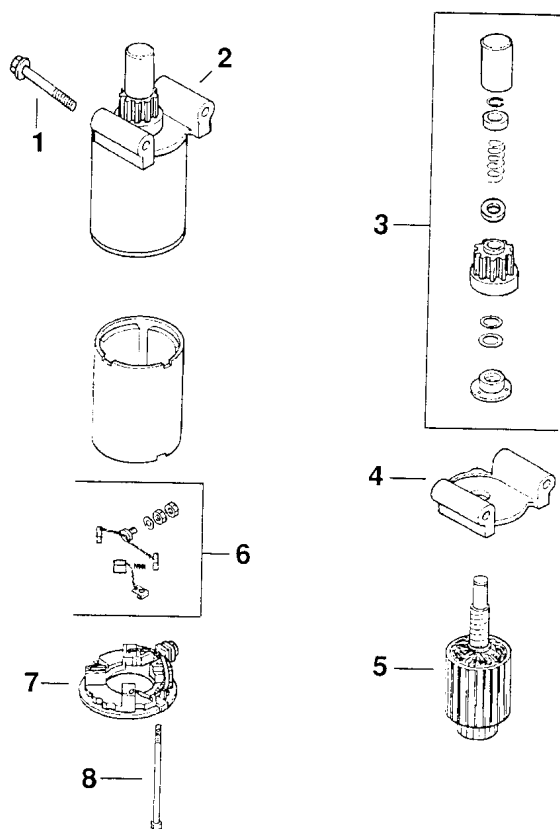
C-1797

Blower Housing & Baffles

Ref. No.	Part No.	Description	No. Used	Ref. No.	Part No.	Description	No. Used
1	M-0545010	Screw	15	6	12 063 05	Baffle - Carburetor	1
2	12 146 07	Plate - Blower Housing	1	7	12 313 03	Grommet - Blower Hsg	1
3	12 063 01	Baffle - Cylinder Barrel	1	8	12 063 03	Baffle - Cylinder Head	1
4	12 096 22	Cover - Starter	1	*	12 133 31	Decal - H.P.	1
5	12 027 09	Housing - Blower	1				

PROTOTYPE

*Not Illustrated



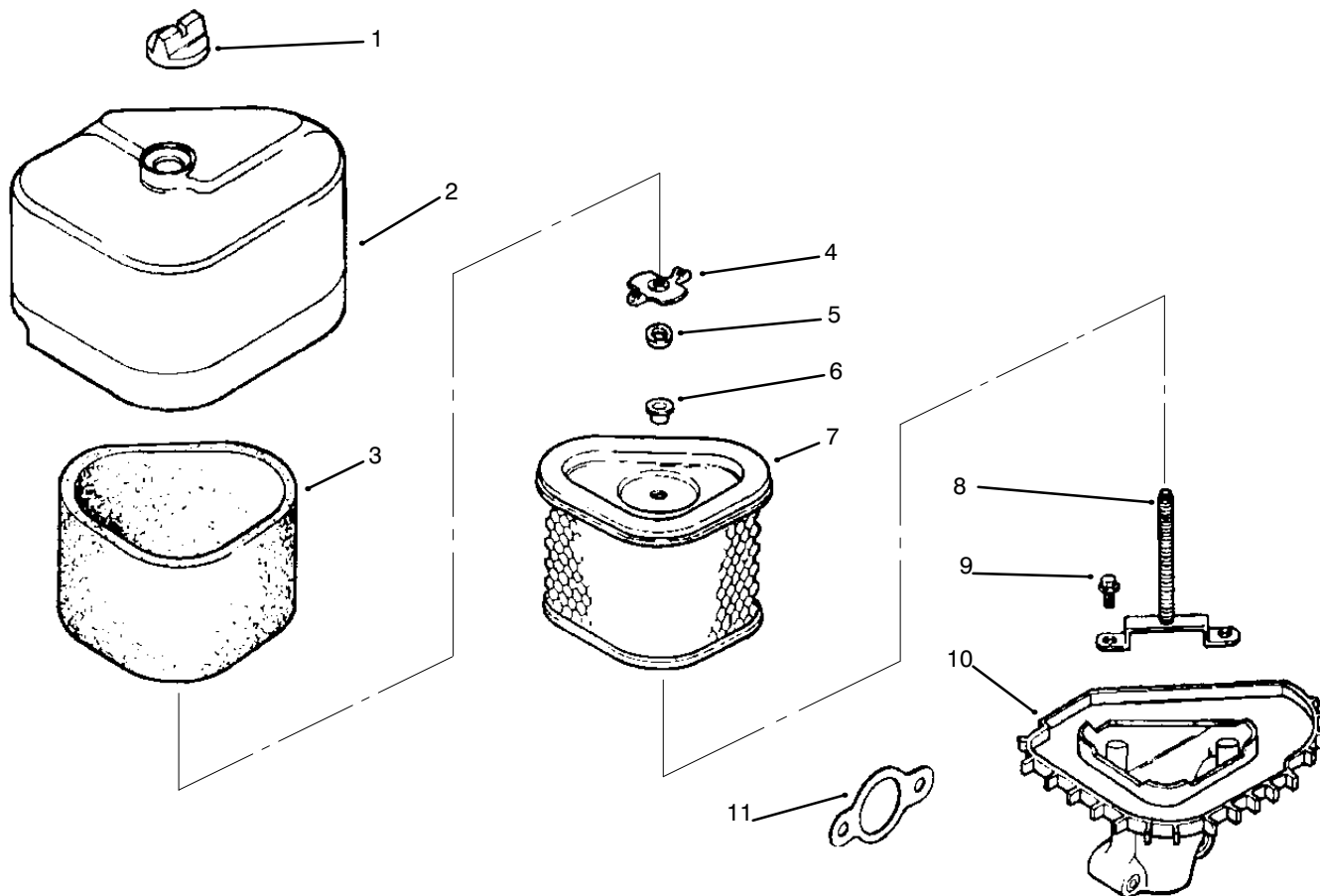
Starter System

Ref. No.	Part No.	Description	No. Used
		Starting System Group 7	
1	M-0839070	Screw	2
2	12 098 12	Starter (Incl. Ref.#3-8)	1
3	12 755 53	Kit - Drive	1
4	12 277 05	Cap - Drive End	1

Ref. No.	Part No.	Description	No. Used
5	12 170 03	Armature	1
6	52 755 28	Kit - Brush	1
7	12 227 10	Cap - Commutator End	1
8	12 086 25	Screw - Flange	1
*	52 357 01	Lubricant	1

PROTOTYPE

* Not Illustrated.

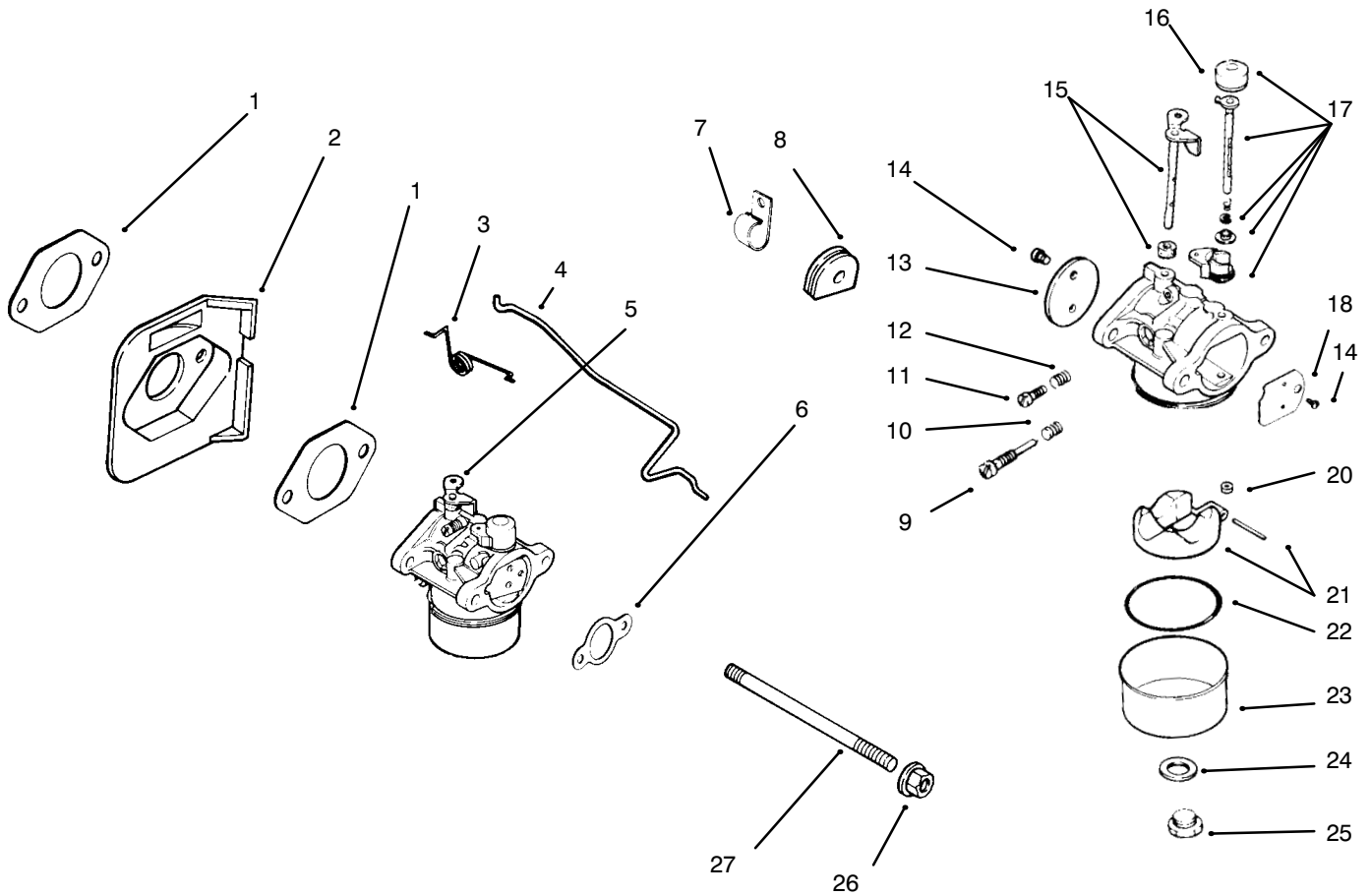


Air Cleaner

Ref. No.	Part No.	Description	No. Used
1	25 341 02	Knob - Air Cleaner Cover	1
2	12 096 16	Cover - Air Cleaner	1
3	12 083 12	Precleaner - Element	1
4	12 100 01	Nut - Wing	1
5	X-25-63	Washer - Flat	1
6	12 313 04	Grommet	1
7	12 083 10	Element - Air Cleaner	1

Ref. No.	Part No.	Description	No. Used
8	12 072 04	Stud - Mounting Plate	1
9	12 086 01	Screw - Mounting Plate	1
10	12 094 07	Base - Air Cleaner	1
11	12 041 02	Gasket - Air Cleaner	1
*	12 734 02	Kit - Air Cleaner (Incl. Ref. #1-11)	1
*	12 113 04	Decal - Air Cleaner	1

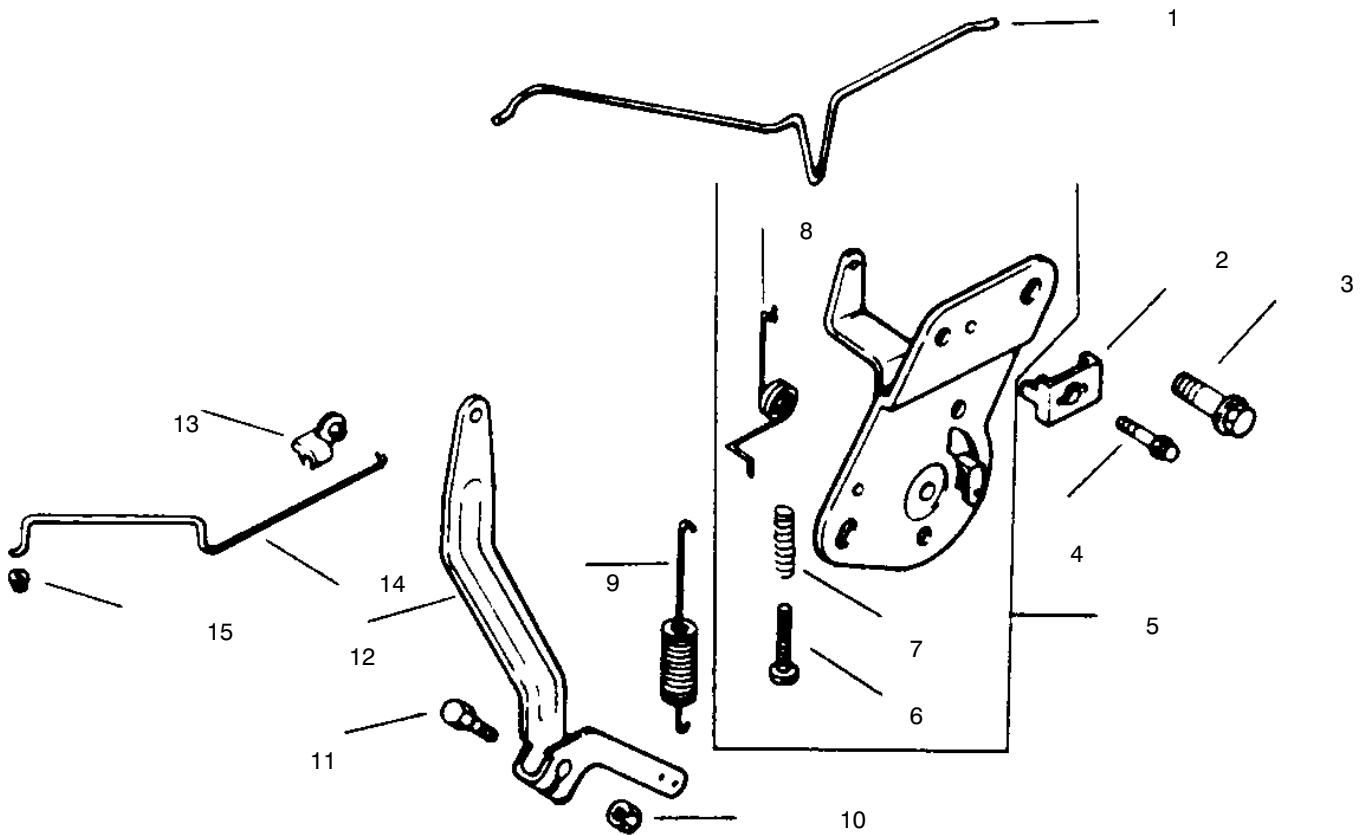
PROTOTYPE



Carburetor

Ref. No.	Part No.	Description	No. Used
1	12 041 01	Gasket - Carburetor	1
2	12 265 01	Deflector - Heat	1
3	12 089 23	Spring - Choke Return	1
4	12 079 07	Linkage - Choke	1
5	12 053 47	Carburetor Assembly (Incl Ref. #9-25)	1
6	12 041 02	Gasket - Air Cleaner	1
7	47 154 01	Clamp - Fuel Line	1
8	12 313 01	Grommet	1
9	12 368 05	Needle - Idle	1
10	12 089 09	Spring - Idle	1
11	12 086 04	Screw - Idle	1
12	12 089 09	Spring - Idle	1
13	12 146 03	Plate - Throttle	1
14	25 086 27	Screw - Throttle Plate	2
15	12 144 09	Shaft Assembly-Throttle	1

Ref. No.	Part No.	Description	No. Used
16	12 173 06	Cap - Choke Lever	1
17	12 757 08	Kit - Choke Repair (Incl. Ref.#16)	1
18	12 146 12	Plate - Choke	1
20	12 337 03	Jet - Main	1
21	12 757 02	Kit - Float	1
22	12 041 05	Gasket - Bowl	1
23	12 104 01	Bowl - Fuel	1
24	12 041 06	Gasket - Bowl	1
25	12 086 05	Screw - Bowl	1
26	M-0641060	Nut - Carburetor	2
27	M-0629122	Stud - Carburetor	2
*	12 757 03	Kit - Carburetor Repair	1
*	12 853 47	Kit - Carburetor (Incl Ref. #2-6)	1

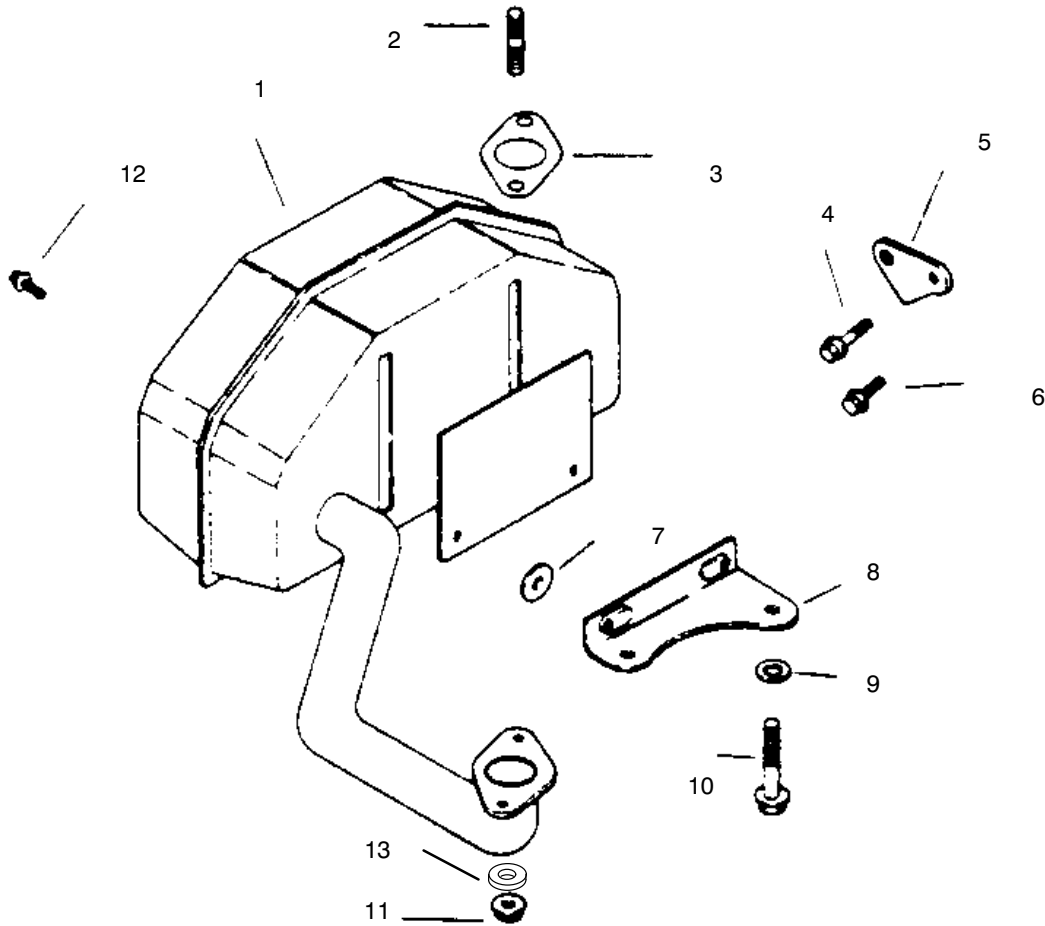


Engine Controls

Ref. No.	Part No.	Description	No. Used
1	12 079 07	Linkage - Choke	1
2	12 237 01	Clamp - Cable	1
3	M-0645016	Screw - Hex. Hd.	2
4	SM-0545016	Screw - Cable Clamp	1
5	12 536 01	Control - Speed (incl Ref.#6-8)	1
6	SM-0443025	Screw	1
7	12 089 11	Spring	1

Ref. No.	Part No.	Description	No. Used
8	12 089 23	Spring - Choke	1
9	12 089 19	Spring - Governor	1
10	M-0641060	Nut - Governor	1
11	SM-0642025	Screw - Governor	1
12	12 090 05	Lever - Governor	1
13	25 158 11	Bushing - Black Retainer	1
14	12 079 01	Linkage - Throttle	1
15	25 158 08	Bushing - Natural, Linkage	1

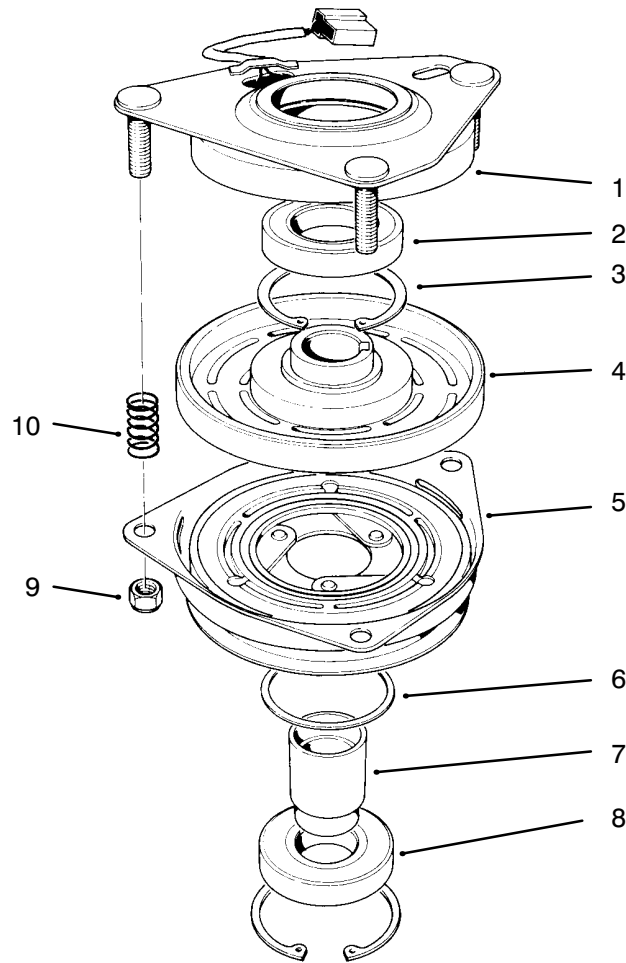
PROTOTYPE



Exhaust

Ref. No.	Part No.	Description	No. Used	Ref. No.	Part No.	Description	No. Used
1	12 068 03	Muffler	1	9	12 468 01	Washer - Flat	1
2	M-0829033	Stud - Exhaust Manifold	2	10	12 086 13	Screw - Oil Pan	1
3	12 041 03	Gasket - Exhaust	1	11	M-0841080	Nut - Muffler	2
4	M-0645025	Screw - Lifting Strap	1	12	M-0650012	Screw - Muffler	2
5	12 445 06	Strap - Lifting	1	13	3253-4	Washer	2
6	M-0645020	Screw	1	*	12 755 01	Gasket Set	1
7	X-25-52	Washer	2		12 755 30	Kit - Bracket	1
8	12 126 39	Bracket - Muffler	1				

PROTOTYPE

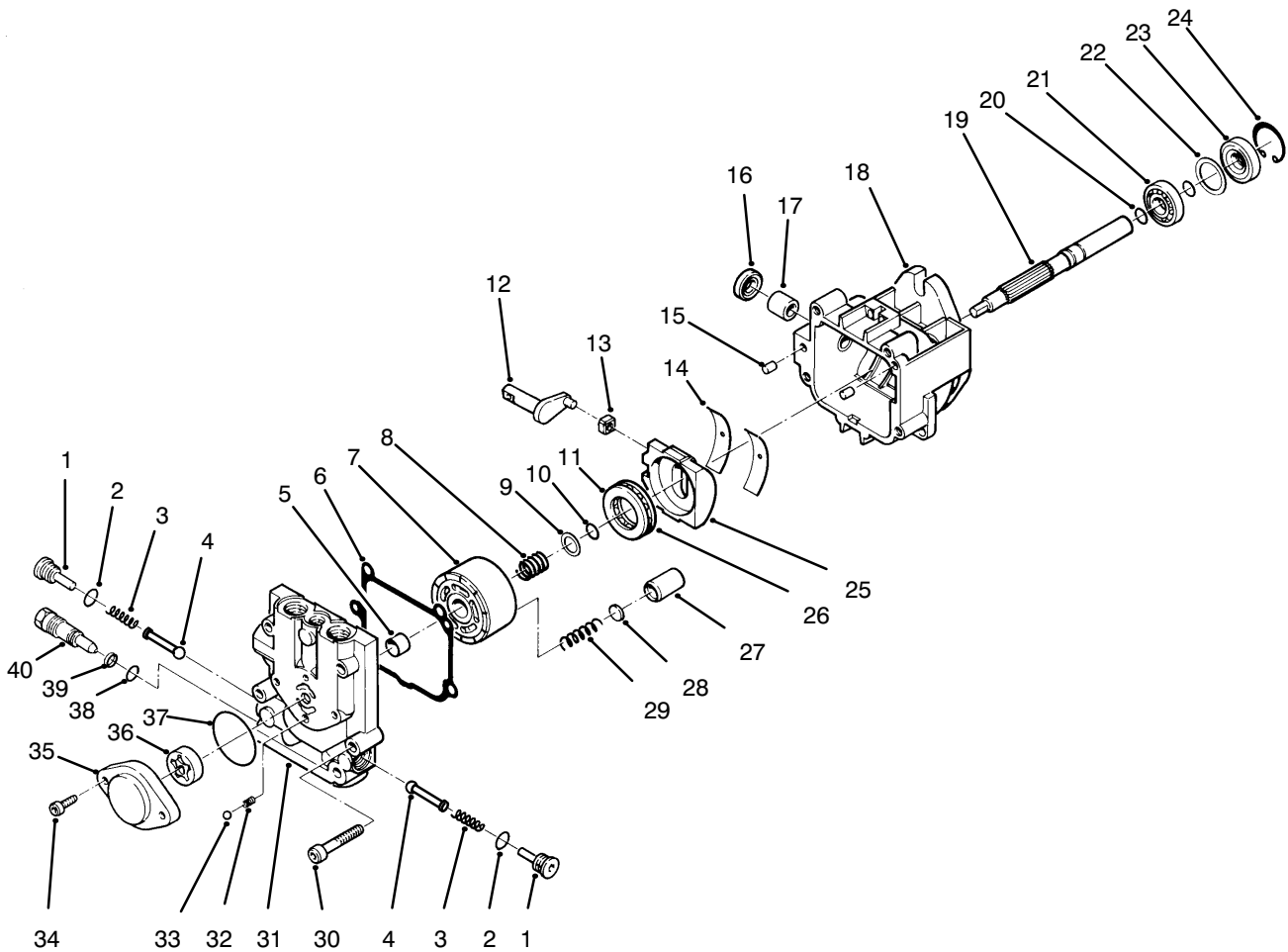


T-0080

CLUTCH ASSEMBLY NO. 54-3200

Ref. No.	Part No.	Description	No. Used	Ref. No.	Part No.	Description	No. Used
1	54-0230	Field Ass'y (Incl. Ref. #2 & 3)	1	6	44-8330	Spacer	1
2	251-292	Bearing - Field	1	7	44-8340	Collar - Bearing	1
3	44-8310	Ring - Retaining	2	8	251-291	Bearing - Pulley	1
4	44-8360	Field Coil, Rotor & Bearing Assembly (Incl. Ref. #1)	1	9	3296-5	Nut - Lock	3
5	55-7410	Armature & Pulley Assemble (Incl. Ref. #3,6,7, & 8)	1	10	44-8320	Spring	3

PROTOTYPE

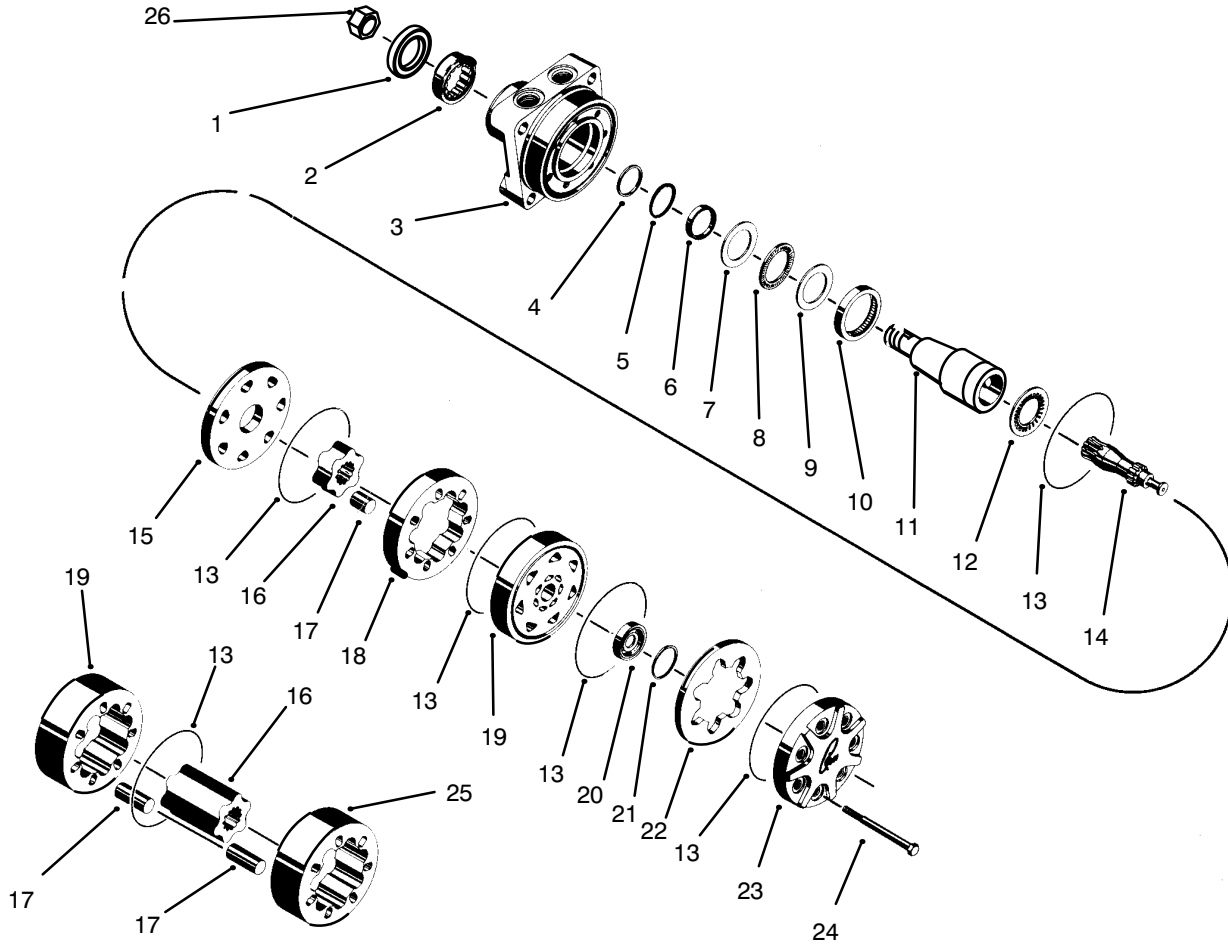


T-1236

Hydraulic Pump Assembly No. 95-1538

Ref. No.	Part No.	Description	No. Used	Ref. No.	Part No.	Description	No. Used
	82-6120	Check Valve Kit (Incl. Ref. #2-4)	1	23		Seal - Lip	1
2		Seal - O-Ring	2	24		Ring - Retaining	1
3		Spring	2	25		Swashplate Assembly	1
4		Poppet	2	26		Roller - Thrust	1
5		Journal - Bearing	1	27		Piston	5
6		Gasket - End Cap	1	28		Washer - Thrust	5
7		Cylinder Block Kit (Incl. Ref. #8-10 & 27-29)	1	29		Spring - Piston	5
8		Spring	1	30		Screw	4
9		Washer	1	31		End Cap Assembly (Incl. Ref. #5)	1
10		Ring - Retaining	1	32		Ball	1
11		Plate - Thrust	1	33		Spring	1
12		Arm - Trunnion	1	34		Screw	2
13		Guide - Slot	1	35		Housing - Charge Pump	1
14		Cradle - Bearing	2	36		Gerotor Assembly	1
15		Pin	2	37		Seal - O-Ring	1
16		Seal - Lip	1	38		Seal - O-Ring	1
17		Journal - Bearing	1	39		Ring - Back-Up	1
18		Housing - Assembly (Incl. Ref. #16 & 17)	1	40		Valve - Bypass	1
19		Shaft	1	*	80-6110	Charge Relief Valve Kit (Incl. Ref. #32-33)	1
20		Ring - Retaining	2	*	80-6130	Overhaul Seal Kit (Incl. Ref. #6, 10, 16, 20, 23 & 37-39)	1
21		Bearing - Ball	1				
22		Spacer	1				

*Not Illustrated

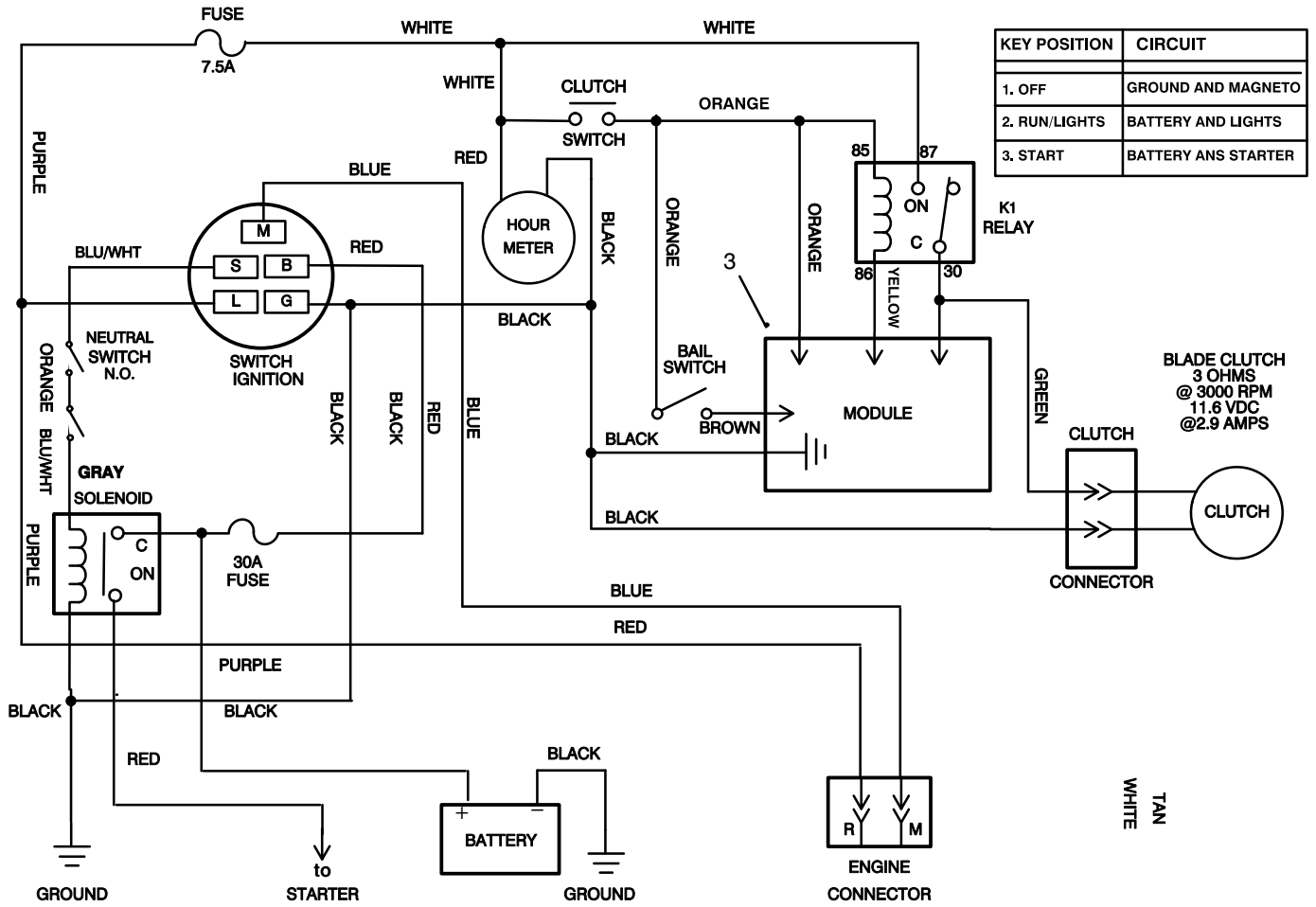


C-0737

Traction Drive Motor (Torquemotor)

Ref. No.	Part No.	Description	No. Used	Ref. No.	Part No.	Description	No. Used
1		Seal	1	15		Plate Wear	1
2		Bearing	1	16		Rotor	1
3		Housing	1	17		Vane	7
4		Washer - Back Up	1	18		Stator	
5		Washer - Back Up	1	19		Manifold	1
6		Seal	1	20		Commutator	1
7		Washer - Thrust	1	21		Seal - Commutator	1
8		Bearing - Thrust	1	22		Commutator - Ring	1
9		Washer - Thrust	1	23		Cover - End	1
10		Bearing - Inner	1	24		Bolt - Special	A/R
11		Coupling - Shaft	1	25		Stator Half	
12		Bearing - Thrust	1	26	85-7310	Nut	1
13		"O"Ring	5	*	85-7320	Kit - Seal (Incl. Ref. #1,4,6,13 & 20)	1
14		Link - Drive	1				

*Not Illustrated



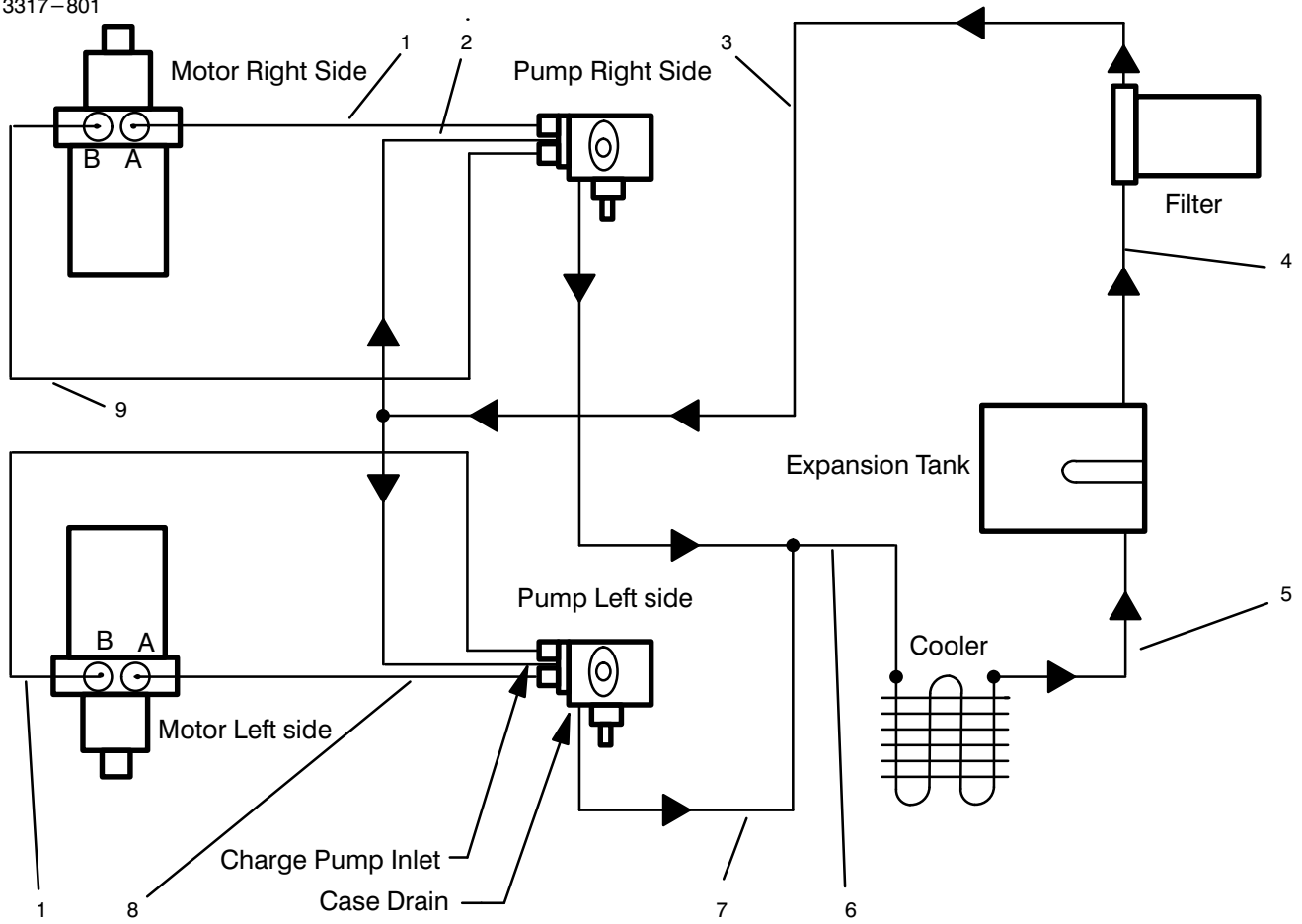
Electric Schematic

Ref. No.	Part No.	Description	No. Used
1	95-2807	Wire Harness (Ref.)	1
2	63-7590	Relay (Ref.)	1

Ref. No.	Part No.	Description	No. Used
3	94-9666	Interlock Module (Ref.)	1

PROTOTYPE

3317-801



C-0708

Hydraulic Schematic

Ref. No.	Part No.	Description	No. Used
1	82-4550	Hose Assembly	2
2	82-4170	Hose Assembly	1
3	82-4180	Hose Assembly	1
4	82-4200	Hose Assembly	1
5	82-4193	Hose Assembly	1

Ref. No.	Part No.	Description	No. Used
6	82-4192	Hose Assembly	1
7	82-4201	Hose Assembly	1
8	82-4560	Hose Assembly	1
9	82-4540	Hose Assembly	1

PROTOTYPE

Toro Part Number Index

Part No.	Page No.	Ref. No.	Qty.	Description
112843	5	13	1	Washer-PTO
608006	5	16	1	Key
12-5950	7	6	2	Rod-Support
23-0660	4	18	1	Switch-Starter
27-6230	5	8	1	Bolt-Wheel
29-0590	6	12	1	Screen-Filler
29-0642	1	5	1	Jiffy-Trim
44-5940	5	15	1	Pulley-Drive
47-2964	1	22	1	Hose-Gas
47-2982	5	4	1	Hose-Fuel
51-4210	7	7	2	Pad-Tank
51-4540-03	1	18	1	Retainer-Clutch
54-3094	7	3	1	ASM-Wire
54-3200	5	14	1	Clutch ASM
55-3570	5	1	1	Cap-Fuel
56-6360	1	20	1	Filter-Fuel
57-6360	5	12	1	Screw-HH
57-6380	1	17	4	Screw-HH
62-4540-03	5	10	1	Pulley-Idler
63-7590	4	10	1	Relay
63-8360	4	22	2	Key-Ignition
63-8440	1	24	1	Decal-Hot Surface
65-7410	5	27	2	Switch-Single Pole
67-8110	6	39	2	Filter-Oil
68-2190	5	7	1	Spring-Extension
68-3810	7	13	1	Tube-Vent
74-0521	3	24	1	Rod-Fitting
74-0630	4	3	1	Control-Throttle
74-0720	4	8	1	Tube-Manual
74-0761	1	23	1	Engine-Kohler
74-0930-01	1	19	1	Guard-Pulley
74-0950	1	26	2	Elbow
75-6820	4	24	1	Hour Meter
76-0200	6	11	1	ASM-Cap
77-0980	7	12	1	Boot-Terminal
77-0981	7	11	1	Boot-Terminal
80-6090	6	35	2	Key-Square
82-2181-03	4	23	1	Panel-Control
82-2190	3	11	1	Switch-Bail
82-2300	4	1	1	Switch
82-3790	5	36	2	Arm-Control
82-3820	4	2	1	Boot-Switch
82-3830	6	29	2	Hub-Wheel
82-3840	3	21	2	Spacer-Latch
82-3920	2	23	2	Stop-Reverse
82-4110	6	34	1	V-Belt
82-4130	2	1	4	Bearing
82-4160	2	20	2	Spring-Detent
82-4170	6	7	1	ASM-Hose
82-4180	6	6	1	ASM-Hose
82-4192	6	15	2	ASM-Hose
82-4200	6	16	1	ASM-Hose
82-4201	6	9	1	ASM-Hose
82-4210-01	2	4	1	Bracket-Bushing
82-4220	1	30	1	Cooler-Oil
82-4240	2	21	2	Spacer-Bearing
82-4330-01	2	14	1	Arm-Detent LH
82-4340-01	2	15	1	Arm-Detent RH
82-4370	2	16	2	Bushing-Arm
82-4500-03	1	32	1	Mount-Cooler
82-4540	6	2	1	ASM-Hose
82-4550	6	1	2	ASM-Hose

*Not Illustrated

Toro Part Number Index (cont.)

Part No.	Page No.	Ref. No.	Qty.	Description
82-4560	6	24	1	ASM-Hose
82-4570	5	28	2	Plate-Switch
82-4580-03	5	25	2	Bracket-Neutral
82-4590	3	17	1	Decal-Slope Warning
82-4600	2	26	2	Decal-Hydro
82-4620-01	7	2	1	Strap-Battery
82-4640	7	8	1	Battery-12 Volt
82-7721	4	5	A/R	Decal-Panel
82-8230	6	22	2	Motor-Wheel
84-1830	7	14	1	Cap-Battery
86-4730-01	6	37	2	Plate-Frame
86-4740-01	6	36	2	Spacer-Frame
86-4770-03	5	6	1	Lever-Idler
86-9080	6	41	1	Head-Filter
88-1880	5	5	1	Spring-Compression
92-2350-01	7	5	2	Holder-Battery
92-9845	1	12	1	Solenoid
93-1187-03	4	16	1	Panel-Bottom
93-1189	7	10	1	Wire-Red
93-7031	1	38	1	Muffler (Supplied w/Eng)
93-7032	1	35	1	Gasket (Supplied w/Eng)
93-7033	1	37	2	Screa
93-7034	1	33	2	Nut (Supplied w/Eng)
94-9054-01	2	34	1	Arm-Pivot LH
94-9057	2	7	1	Lever-Pivot LH
94-9059	2	5	1	Lever-Pivot RH
94-9061-01	2	35	1	Arm-Pivot RH
94-9062	2	11	2	Sleeve
94-9093	2	9	2	Rod-Link
94-9095	3	15	1	Rod-Control
94-9096-01	2	37	1	Frame ASM
94-9664	6	26	2	ASM-Wheel & Tire
94-9666	4	17	1	Module
95-1504	3	4	1	Turnbuckle
95-1505	3	5	1	Rod-Control
95-1506	3	1	1	Rod-Control
95-1507-03	3	9	1	Control Bar ASM
95-1510-03	3	10	1	Bail ASM
95-1513-03	3	16	1	Pivot ASM
95-1516	2	30	2	Spacer-Tubular
95-1522-01	2	39	1	Bracket-Pivot
95-1523	3	12	1	Decal-Traction Drive
95-1524	3	13	1	Decal-T Bar
95-1526	5	21	1	Trailing Shield
95-1528	6	33	2	Pulley-Pump
95-1529	5	20	1	Rod-Shield
95-1530-01	2	29	1	Bracket-Pivot
95-1532	6	13	1	Reservoir-Oil
95-1536	3	7	1	Handle ASM
95-1538	5	32	2	Hydraulic Pump ASM
95-1543	5	37	1	Decal-Valve Adjust
95-1544	4	4	1	Decal-Warning
95-2802	5	2	1	Tank-Fuel
95-2807	3	27	1	Harness-Wire
95-2814	1	1	1	Decal-Fuel Shut-Off
95-5853	3	22	2	Lock ASM-Quick Release
95-5854	3	33	2	Sleeve
95-5855-03	3	18	2	Spacer-Pivot
95-5856-03	3	29	1	Handle-Upper
95-5859	4	5	1	Decal-Control Panel
95-5862	3	34	1	Decal-Speed Lock
95-5868-01	2	40	1	Guard-Filter

*Not Illustrated

Toro Part Number Index (cont.)

Part No.	Page No.	Ref. No.	Qty.	Description
218-461	4	21	1	Nut-HH (F/W Sw)
218-595	3	30	1	Connector-Body
231-117	6	26:3	2	Tire-15x6
232-27	6	26:1	2	Valve Stem & Cap Assembly
237-30	6	3:1	4	O-Ring
237-79	6	3:2	4	O-Ring
237-124	5	34	1	Grommet
240-9	1	6	2	Grommet
242-50	6	27	8	Nut-Lug
242-87	6	26:2	2	Wheel
2410-71	1	4	2	Cap-Plug
2412-98	1	21	2	Clamp-Hose
2412-98	5	3	2	Clamp-Hose
2412-106	1	9	1	R Clamp
2412-106	1	14	1	R Clamp
2412-120	4	9	2	Clamp-R
2412-134	1	31	2	Clamp R
2412-136	1	7	2	Clamp
251-259	2	22	2	Bearing-Ball
257-5	2	36	2	Washer-Thrust
283-6	3	25	1	Pin-Clevis
283-55	3	20	2	Pin-Clevis
288-4	1	25	1	Cap-Pipe
289-51	1	27	1	Nipple-Pipe
2815-15	6	10	1	Fitting-Hydraulic
2815-16	6	5	1	Fitting-Hydraulic
321-3	2	25	11	Screw-HH
321-3	4	14	1	Screw-HH
321-3	6	43	2	Screw-HH
321-8	2	31	2	Screw-HH
321-39	1	3	6	Screw-HH
322-3	5	18	4	Screw-HH
322-3	6	18	3	Screw-HH
322-3	7	9	2	Screw-HH
322-5	2	2	2	Screw-HH
322-7	2	18	2	Screw-HH
322-7	5	35	2	Screw-HH
322-14	2	24	2	Screw-HH
323-6	2	27	6	Screw-HH
323-9	5	11	1	Screw-HH
323-9	7	15	2	Screw-HH
324-5	5	22	4	Screw-HH
325-11	6	31	8	Screw-HH
3213-8	6	30	8	Screw-HH
3218-2	2	10	4	Nut-Hex Jam
3234-11	3	26	4	Screw-HHF
3234-32	7	18	6	Screw-HH
3241-5	6	32	4	Set Screw
3253-3	6	42	2	Washer-Lock
3253-4	1	16	4	Washer-Lock
3253-4	1	34	2	Washer-Lock
3253-4	5	19	4	Washer-Lock
3253-4	6	17	3	Washer-Lock
3254-5	4	19	1	Washer-Lock
3255-7	4	13	A/R	Washer-Lock
3256-1	1	2	6	Washer-Flat
3256-1	5	24	4	Washer-Flat
3256-23	1	15	4	Washer-Flat
3256-23	2	17	2	Washer-Flat
3256-23	3	23	1	Washer-Flat
3256-78	1	36	2	Washer-Plain
3257-8	6	25	2	Key-Woodruff

*Not Illustrated

Toro Part Number Index (cont.)

Part No.	Page No.	Ref. No.	Qty.	Description
3269-8	5	38	2	Rivet
3274-32	2	19	2	Screw-HH
3290-307	3	2	4	Pin-Cotter
3290-378	2	3	1	Tie-Cable
3290-378	3	8	3	Tie-Cable
3290-378	5	26	2	Tie-Cable
3290-392	4	15	A/R	Screw-HH
3290-436	3	32	2	Washer-Belleville
3296-2	3	6	1	Nut Lock
3296-2	4	6	4	Nut Lock
3296-6	5	17	1	Nut-Lock
3296-23	6	38	8	Nut-Lock
3296-29	2	6	6	Nut-Lock
3296-29	5	30	2	Nut-Lock
3296-39	2	38	6	Nut-Lock
3296-39	5	9	1	Nut-Lock
3296-39	7	16	2	Nut-Lock
3296-42	1	29	2	Nut-Lock
3296-42	2	32	11	Nut-Lock
3296-42	4	12	1	Nut-Lock
3296-42	7	1	2	Nut-Lock
3296-47	2	13	2	Nut-Lock
3296-54	4	11	A/R	Nut
32103-3	3	3	1	Nut-Wing
32104-76	1	8	1	Screw-Self TAP
32104-76	4	20	4	Screw-Self TAP
32105-12	3	14	1	Screw-Hex
32105-14	4	7	4	Screw-HH
32112-17	6	28	8	Pushnut
32121-4	2	33	2	Pin-Roll
32128-10	2	28	2	Nut-Lock HHF
32128-21	3	28	4	Nut-Hfh
32128-23	7	17	6	Nut-Lock
32128-42	5	33	4	Nut-Hex Flange
32144-1	5	29	4	Screw-HH
32144-3	5	23	4	Screw-HWH
32144-4	1	13	3	Screw-TAP
32144-18	4	25	2	Screw-HWH
32149-1	7	4	2	Nut-Keps
32149-2	1	11	2	Nut-Hex Lock
32151-3	2	8	4	Ring-Retaining
32151-80	3	19	2	Ring-Push On
33023-00	3	31	2	Nut-Lock Ni
340-4	6	3	4	Ftg-Hyd
340-6	6	23	4	Fitting-Ors
354-115	6	8	2	Ftg-Hyd
354-116	6	4	2	Fitting-Hydraulic
354-117	6	40	2	Fitting-Hydraulic
354-118	6	14	2	Fitting-Hydraulic

PROTOTYPE

