



GreensPro 1200 Greens Roller

Model No. 44905—Serial No. 312000001 and Up

Model No. 44906—Serial No. 312000001 and Up

Form No. 3373-786 Rev A

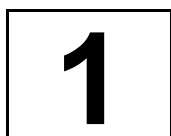
Setup Instructions

Loose Parts

Use the chart below to verify that all parts have been shipped.

Procedure	Description	Qty.	Use
1	Lift arm catch assembly	1	Install the lift arm catch assembly
2	Lift arm assembly	1	Install the lift arm assembly
3	Transport wheels	2	Install the transport wheels
4	Rear tow bar assembly	1	Install the rear tow bar assembly
5	Lift bar	2	Install the lift bar
6	Steering wheel Steering shaft cover Steering wheel cap	1 1 1	Install the steering wheel
7	Seat	1	Install the seat
8	No parts required	—	Remove the machine from the pallet

Keep the machine on the pallet while installing the components.



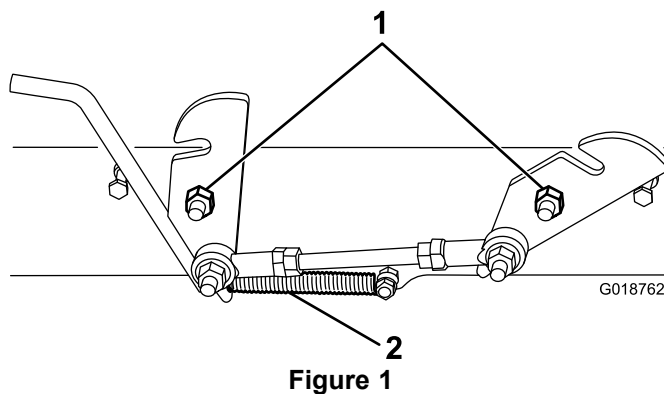
Installing the Lift Arm Catch Assembly

Parts needed for this procedure:

1	Lift arm catch assembly
---	-------------------------

Procedure

1. Hook the spring onto the catch (Figure 1).



1. Bolts 2. Spring

2. Place the catch onto the bolts.
3. Tighten the nuts so that the catch mechanism does not move, then back the nut off on each catch to allow the catch mechanism to move freely.



2

Installing the Lift Arm Assembly

Parts needed for this procedure:

1	Lift arm assembly
---	-------------------

Procedure

1. Remove the seat pan bolt and flip the seat pan up.
 2. Remove the top half of the clamps on the base then feed the lift arm assembly under the seat support.
- Note:** Ensure that the position of the lift arm is centered between the flanges welded to the shaft as they fit inside the lift arm clamps.
3. Install the top half of the clamps and secure them with the previously removed bolts. Do not tighten the bolts completely until the gas lift ram has been installed (Figure 2).

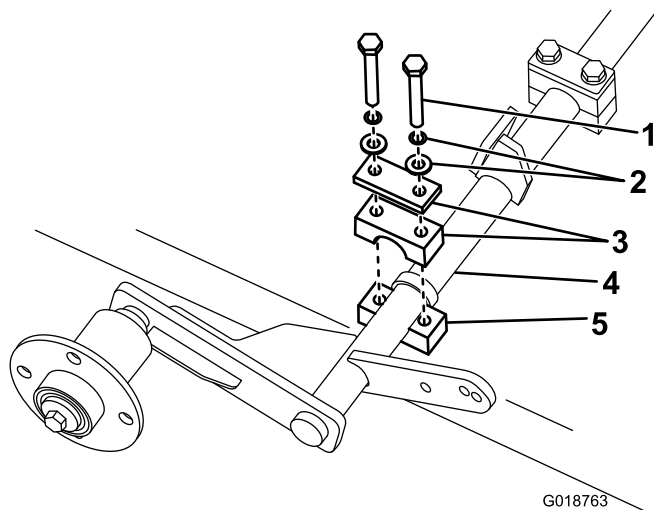


Figure 2

- | | |
|---------------------|----------------------|
| 1. Bolts | 4. Lift arm assembly |
| 2. Nuts and washers | 5. Clamp |
| 3. Clamps | |

4. Remove the nuts and washers on the end of the gas ram that is not assembled to the base.
5. Place the shoulder end through the lift arm top hole.

Note: The bolts in the clamps holding the lift arm in place may need to be loosened to easily locate the gas ram in the arm (Figure 3).

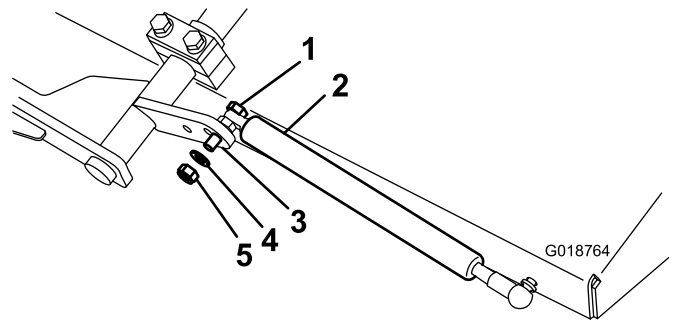


Figure 3

- | | |
|----------------------------|-----------|
| 1. Shoulder end of gas ram | 4. Washer |
| 2. Gas ram | 5. Nut |
| 3. Lift arm | |
6. Install the washers and nut on the other side of the gas ram.
 7. Tighten the nut using two spanners.
 8. Torque the bolts on the lift arm assembly to 47.5 N-m (35 ft-lb).

3

Installing the Transport Wheels

Parts needed for this procedure:

2	Transport wheels
---	------------------

Procedure

1. Place the lift arm in the upright position to raise the wheel hubs.
2. Install the transport wheels. Torque the wheel lug nuts to 108 N-m (80 ft-lb).
3. Adjust the tire pressure to 0.65 bar (10 psi).

4

Installing the Rear Tow Bar Assembly

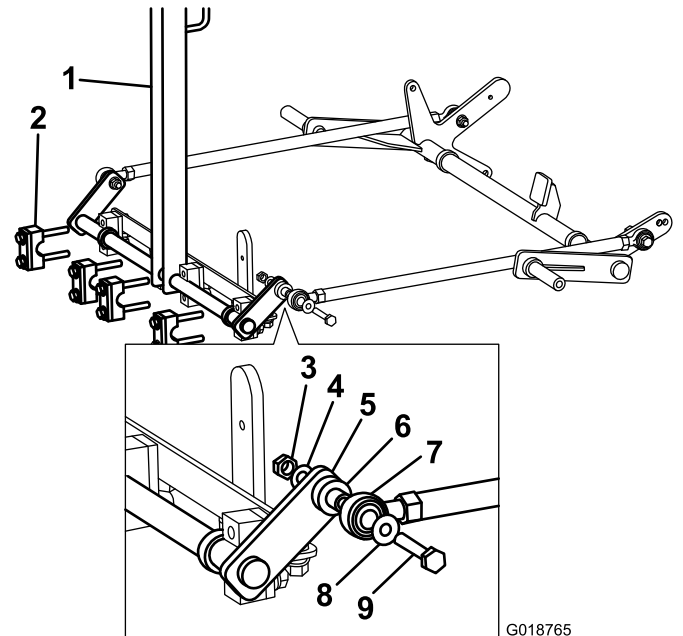
Parts needed for this procedure:

1	Rear tow bar assembly
---	-----------------------

Procedure

1. Remove the transmission cover to allow access to the nuts for the tow bar.
2. Remove the outer half of the clamps on the back of the machine.
3. Place the tow bar in position and install the clamps. Torque the nuts to 47.5 N-m (35 ft-lb).

Note: Do not overtighten. This assembly needs to pivot easily.



G018765

Figure 4

- | | |
|----------------------|-----------|
| 1. Tow Bar | 6. Washer |
| 2. Clamps | 7. Nut |
| 3. Nut | 8. Washer |
| 4. Washers | 9. Bolt |
| 5. Lift arm assembly | |

3. Install the transmission cover.

5

Installing the Lift Bar

Parts needed for this procedure:

2	Lift bar
---	----------

Procedure

1. Align the arms to ensure that the oil fittings in the rod ends are up to allow access.
2. Place the bolt through the washer and rod end, the bushing, the bar, the washer, and secure with the nut (Figure 4).

6

Installing the Steering Wheel

Parts needed for this procedure:

1	Steering wheel
1	Steering shaft cover
1	Steering wheel cap

Procedure

1. Remove the bolt, lock washer, and thick retaining washer from the steering shaft.
2. Slide the steering shaft cover over the shaft (Figure 5).

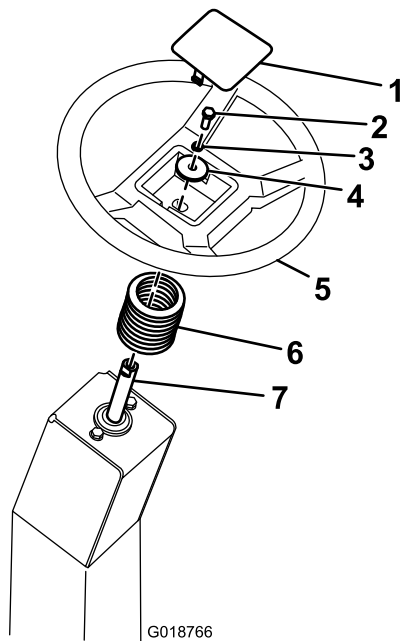


Figure 5

- | | |
|-----------------------|-------------------------|
| 1. Steering wheel cap | 5. Steering wheel |
| 2. Bolt | 6. Steering shaft cover |
| 3. Lock washer | 7. Steering shaft |
| 4. Large washer | |

- Slide the steering wheel down onto the shaft and install the large washer, lock washer, and tighten with the bolt. Torque the steering wheel bolt to 25.4 N-m (225 in-lb).
- Align the steering wheel cap with the steering wheel pocket and lightly press it into position.

7

Installing the Seat

Parts needed for this procedure:

1	Seat
---	------

Procedure

- Remove the nut and washers from each bolt.

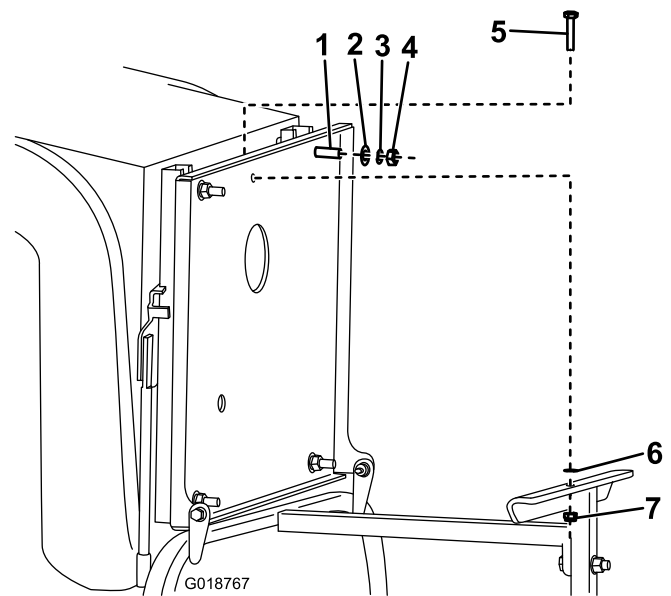


Figure 6

- | | |
|----------------|-----------|
| 1. Bolt | 5. Bolt |
| 2. Lock washer | 6. Washer |
| 3. Washer | 7. Nut |
| 4. Nut | |

- Line up the bolts on the seat with the holes in the seat pan.
- Place the seat onto the seat pan. Lift the seat pan carefully.
- Install the lock washers and tighten all four of the nuts to the seat pan.
- Lower the seat and install the seat hold down bolt.

8

Removing the Machine from the Pallet

No Parts Required

Procedure

- Place a couple of pieces of wood on both sides of the pallet, approximately 90-100 mm (3-1/2 to 4 inches) in height under both transport wheels.
- Lift the machine slowly with the lift bar.
- Once the machine is fully raised, move around to the tow bar and pull the machine away from the pallet carefully. Remove the pallet.

Refer to the *Operator's Manual* and the *Engine Manual* for starting procedures.

Check the engine RPM and adjust it to 3200 RPM.