



**Light Kit**  
**GrandStand® Mower**  
 Model No. 114-3505

**Installation Instructions**

# Installation

## Loose Parts

Use the chart below to verify that all parts have been shipped.

Procedure	Description	Qty.	Use
<b>1</b>	Bracket	2	Install the brackets.
	Bolt (3/8 x 1 inch) (self tapping)	4	
<b>2</b>	Right light	1	Install the lights.
	Left light (has button switch)	1	
	Locknut (5/16 inch)	2	
	Wire harness	1	
	Fuse (15 amp)	1	
	Convolute tube	2	
	Plastic tie	8	
	Friction washer	2	
Y-Adapter	1		

# 1

## Installing the Brackets

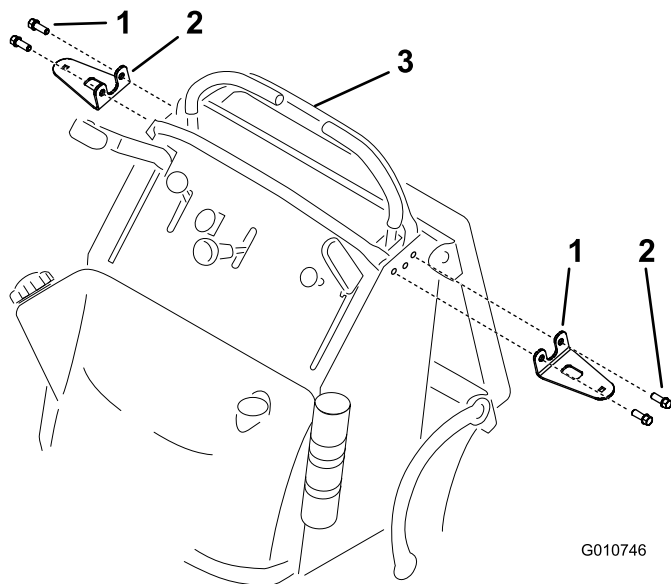
### Parts needed for this procedure:

2	Bracket
4	Bolt (3/8 x 1 inch) (self tapping)

### Procedure

1. Stop the engine, set the parking brake, and remove the key from the ignition switch (Figure 1).
2. Remove the negative (-) battery cable from the battery.
3. Install the 2 brackets to the side of the machine with 4 bolts (3/8 x 1 inch).

**Note:** These are thread-forming (self-tapping) bolts and the frame holes do not require tapping.



**Figure 1**

1. Self-tapping bolt (3/8 x 1 inch)
2. Bracket
3. Control levers



# 2

## Installing the Lights

### Parts needed for this procedure:

1	Right light
1	Left light (has button switch)
2	Locknut (5/16 inch)
1	Wire harness
1	Fuse (15 amp)
2	Convuluted tube
8	Plastic tie
2	Friction washer
1	Y-Adapter

### Procedure

1. Install the convoluted tube onto the exposed wires connected to the lights.

**Note:** Use 4 plastic ties on each end of the convoluted tube to secure it to the wires (Figure 3).

2. Slide the light connectors into the holes in the brackets (Figure 2).

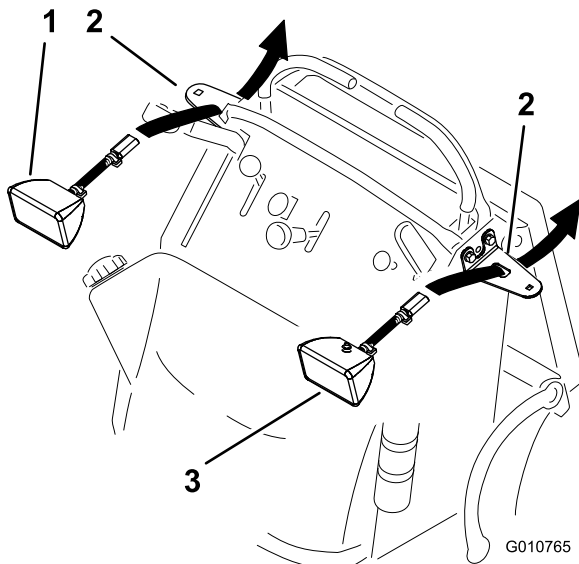


Figure 2

1. Right light
2. Bracket installed
3. Left light (has button switch)

**Note:** The lock washer fits inside the friction washer and centers the friction washer.

**Important:** Do not overtighten the hardware for the lights. Gently tighten the nut to secure the

light and test the friction to move light. Loosen or tighten the nut to control the friction holding the light and allowing the light to be aimed.

3. Discard the 2 nuts included with the lights.
4. Install the left-hand light (with the button switch) to the left bracket with a locknut (5/16 inch), a friction washer, and a lock washer and bolt include with the light (Figure 3).

**Note:** Ensure the light is in place so the friction allows the light to pivot and swivel.

5. Install the right light to the right bracket with a locknut (5/16 inch), a friction washer, and a lock washer and bolt include with the light (Figure 3).

**Note:** Ensure the light is in place so the friction allows the light to pivot and swivel.

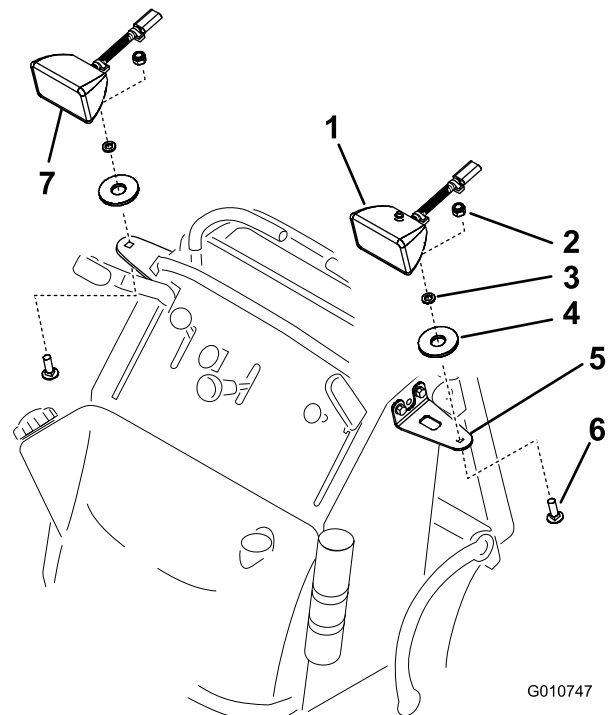
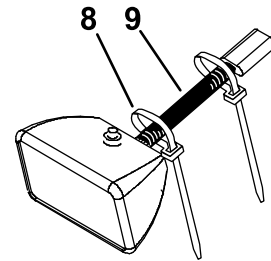
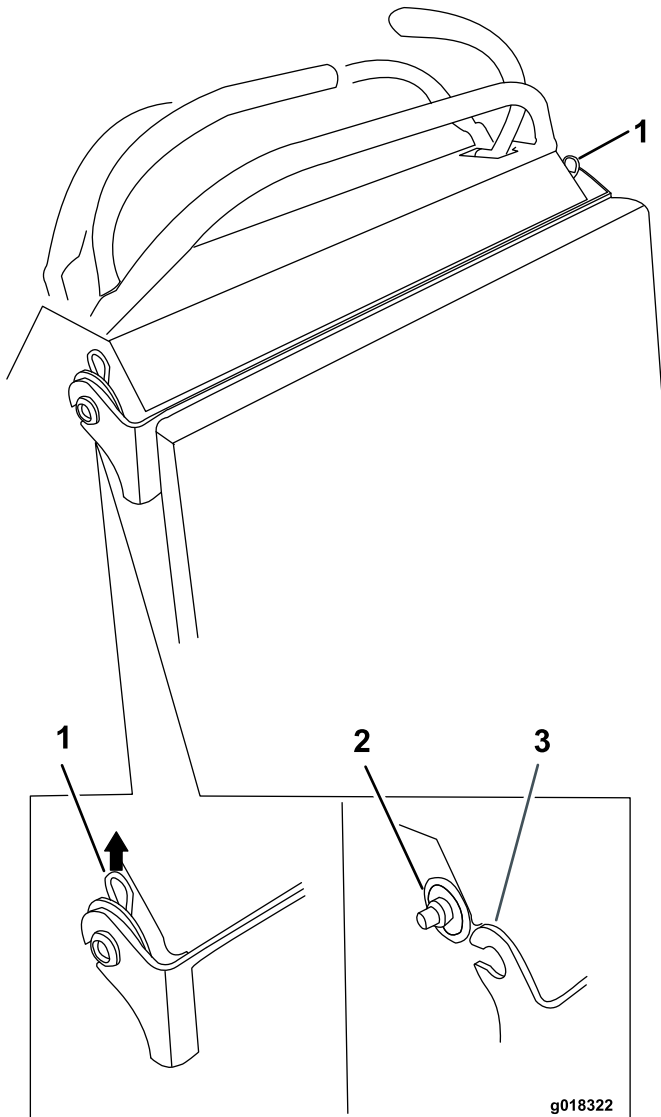


Figure 3

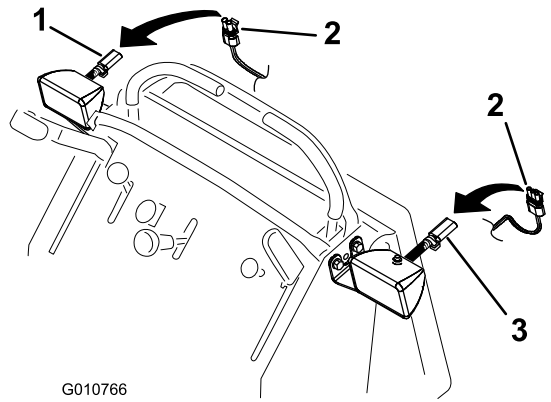
1. Left light (has button switch)
2. Locknut (5/16 inch)
3. Lock washer included with light
4. Friction washer
5. Bracket installed
6. Bolt included with light
7. Right light
8. Plastic tie
9. Convoluted tube

6. Remove the hairpin cotter securing the rear cushion bracket (Figure 4).
7. Slide the bushing next to the machine (Figure 4).
8. Lower the rear cushion bracket onto the platform (Figure 4).



**Figure 4**

1. Hairpin cotter
2. Bushing
3. Rear cushion bracket



G010766

**Figure 5**

1. 2-wire connector
2. Wire harness
3. 3-wire connector

11. Route the wire harness down to the fuse block.
12. Locate the short connector behind the fuse block and remove the insulator cap from the connector.

9. Route the light kit wire harness in front of the control cables and near the traction unit wire harness.
10. Plug the wire harness into the lights (Figure 5).

**Note:** The right light has a 2-wire connector and the left light (with the button switch) has a 3-wire connector.

13. Install the Y-adapter.
  - Plug the single end of the Y-adapter into the short connector behind the fuse block (Figure 6).
  - Plug the wire harness for the lights into the other end of the Y-adapter (Figure 6).
  - Plug the wire harness for the Hydraulic Cooling Assembly (if present) into the Y-adapter (Figure 6).

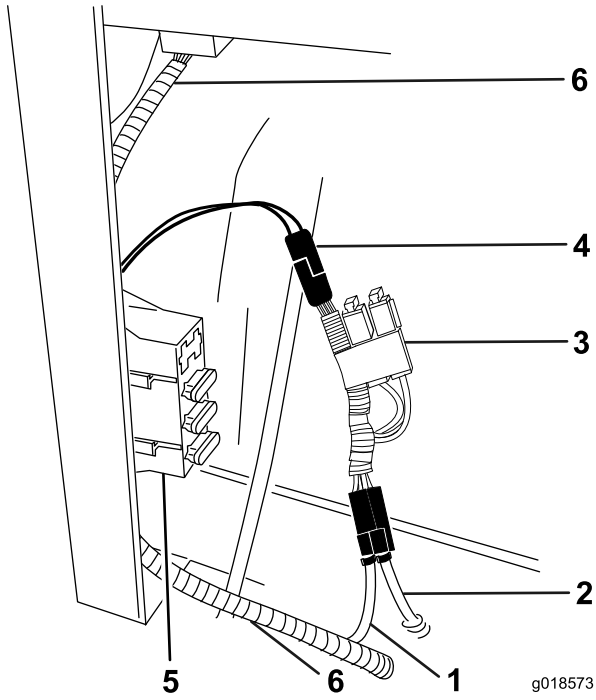


Figure 6

- |  |  |
|--|--|
| 1. Wire harness for either the Lights or the Hydraulic System Cooling Assembly | 4. Short connector behind the fuse block |
| 2. Wire harness for either the Lights or the Hydraulic System Cooling Assembly | 5. Fuse box                              |
| 3. Y-adapter   | 6. Main wire harness                     |

14. Install the fuse (Figure 7).

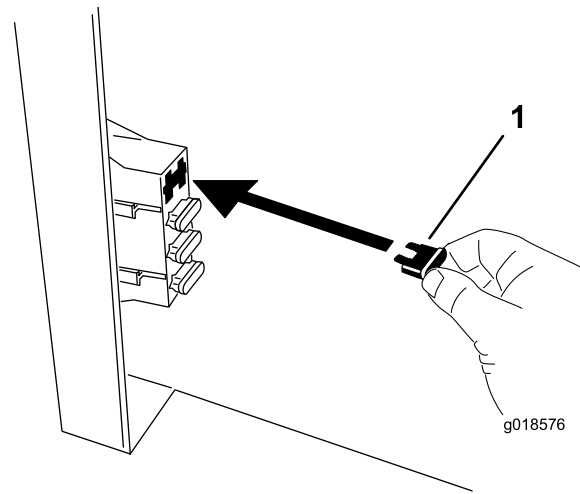


Figure 7

1. Fuse

15. Secure the Y-adapter to the main wire harness with a wire tie supplied in the kit.
 

**Note:** Position the Y-adapter so that the fuses are in an upright position (Figure 6).
16. Secure the light kit wire harness to the traction unit with 3 plastic ties supplied in the kit.
17. Install the rear cushion (Figure 4).
18. Install the negative (-) battery cable to the battery.

## Operation

### Operating the Lights

**Note:** The lights can only be on when the ignition switch is in the Run position.

1. With the ignition switch in the Run position, turn the lights on or off by depressing the button switch on the left light.
2. Pivot or swivel the lights to the desired position.