

LAWN-BOY®

Cordless

36 Volt Electric Mower

Model No.10123 – 7900001 & Up

Parts Catalog

ORDERING REPLACEMENT PARTS

To order replacement parts, please supply: the part number, the quantity, and the description of each part desired.

Contents

Description	Page	Description	Page
Deck, Liner and Wheel Assembly	1	Wire Diagram and Side Discharge Chute	5
Motor, Batteries and Blade Assembly	2		
Cover, Mulch Plug and Panel Assembly	3		
Handle and Controls Assembly	4	Note:	

Accessories

Description	Model / Parts No.	Description	Model / Parts No.
.. 18" Bag Kit	89756		

Part Description Abbreviations

Part descriptions in this catalog may include the following abbreviations.

Abbreviation	Meaning	Abbreviation	Meaning
AR	as required	HWHTF	hex washer head thread forming
ASM	assembly	INC	incorporated
CARR	carriage	LH	left hand
DEG	degrees	PH	pan head
FH	flat head	PPH	Phillips pan head
GA	gauge	PTO	power take off
HF	hex flange	RH	right hand
HFW	hex flange washer	SFH	slotted fillister head
HH	hex head	SH	square head
HHF	hex head flange	SHWH	slotted hex washer head
HHST	hex head self tapping	SPH	slotted pan head
HJ	hex jam	STD	standard
HOC	height-of-cut	TAP	self tapping
HS	hex socket	TH	truss head
HSBH	hex socket button head	TTH	Torx truss head
HSFH	hex socket flat head	WH	wing head
HSH	hex socket head		
HWH	hex washer head		

Important Format Explanations

This catalog uses special formats to convey information in illustrations and parts lists. Specifically, one format is used in conjunction with service assemblies and another with quantities associated with reference numbers.

Service Assemblies

Parts within service assemblies have reference numbers in the form $X:Y$. X is the reference number of the service assembly and Y is a sequential number unique to each part within the service assembly.

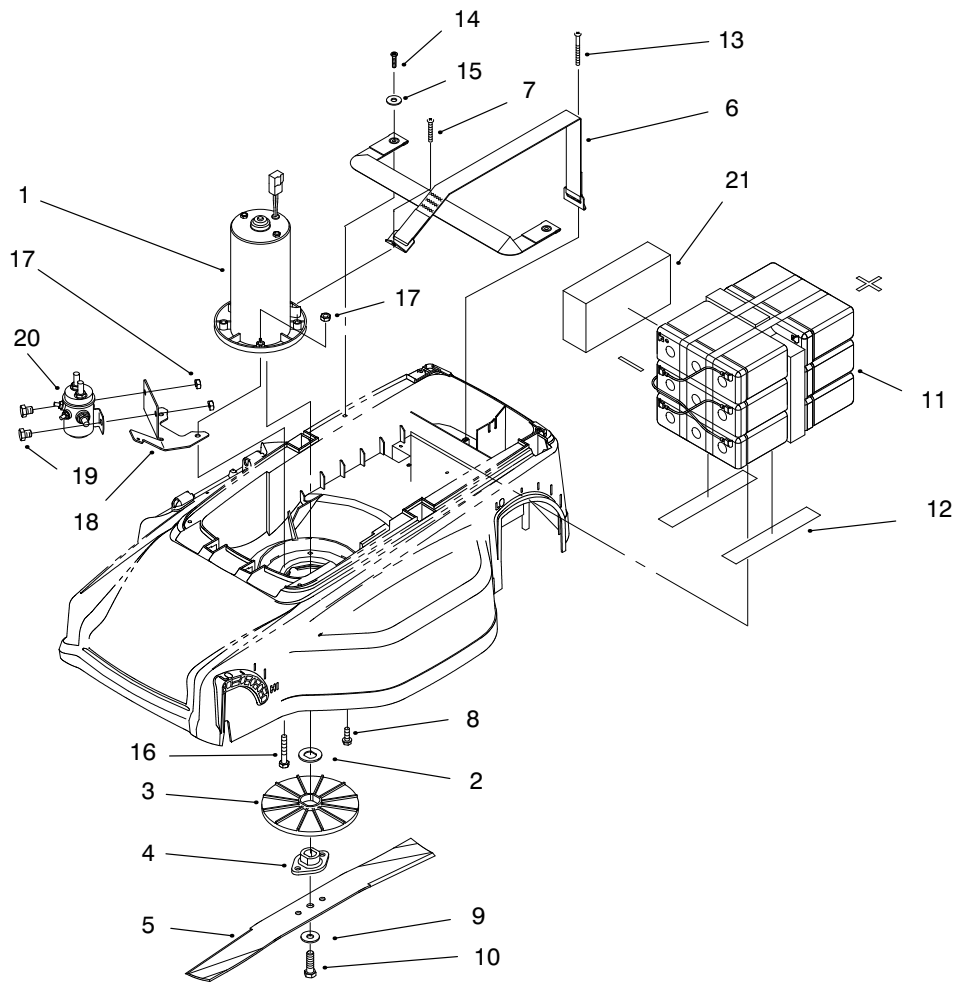
For example, a wheel assembly might be identified by reference number 6, the tire by 6:1, the valve by 6:2, and the wheel by 6:3. When you order the assembly identified by reference number 6, you receive all parts identified by reference numbers 6:1, 6:2, and 6:3. However, you may also order any part individually.

Reference numbers of this type appear in part lists and as callouts in illustrations.

Reference Numbers with Quantities

Illustrations may have a quantity in parentheses next to a reference number, in the form $X (Y)$. X is the reference number. Y in parentheses is the quantity of the part identified by the reference number.

For example, the illustration callout 4 (2) indicates that two parts are used in that instance.

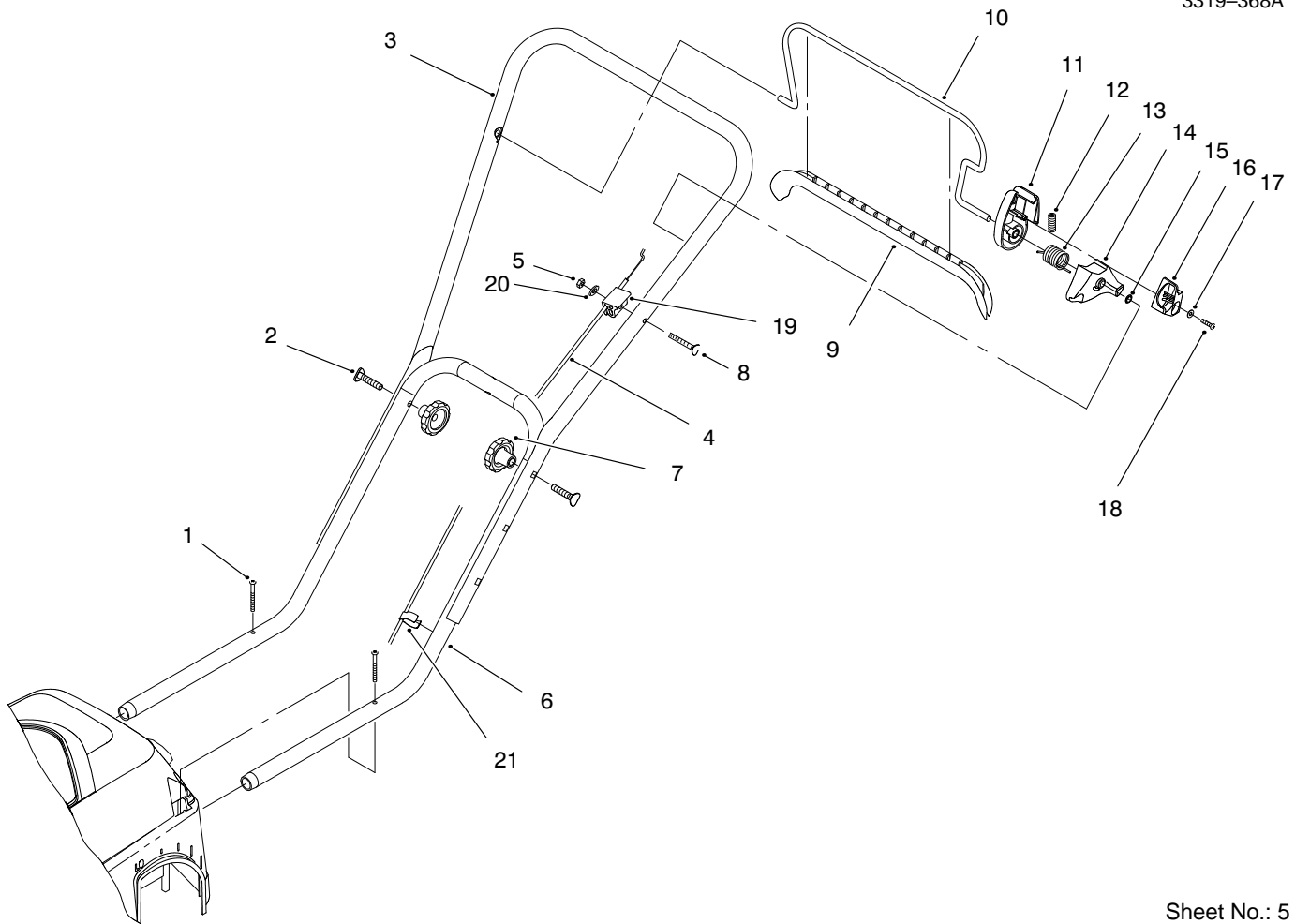


Sheet No.: 3

Motor, Batteries and Blade Assembly

Ref. No.	Part No.	Qty.	Description
1	94-6919	1	ASM-Motor 36 Volt
2	93-3342	1	Washer
3	93-3340	1	Fan
4	93-3341	1	Bushing
5	93-3953	1	Blade
6	95-5027	1	ASM-Battery Strap
7	32144-8	1	Screw-PPH
8	32144-44	2	Screw-HWHTF
9	3290-340	1	Washer-Spring
10	93-3987	1	Bolt-Blade
11	95-5164	1	ASM-Battery (Incl. Ref #12)
12	94-1197	12	Tape-Foam
13	93-3986	1	Screw-PPH
14	94-4496	2	Screw
15	3256-49	2	Washer-Flat
16	32144-110	2	Screw-HWHTF
17	3296-56	4	Nut-Lock
18	95-3027	1	Bracket-Solenoid
19	3234-26	2	Screw-HHF
20	95-3256	1	Solenoid-36 Volt
21	95-5180	1	Spacer-Foam

Ref. No.	Part No.	Qty.	Description

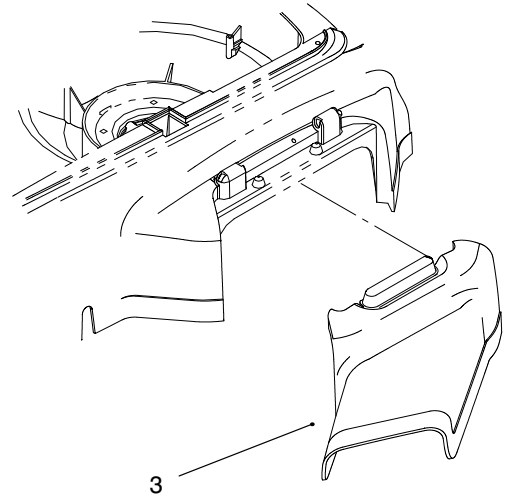
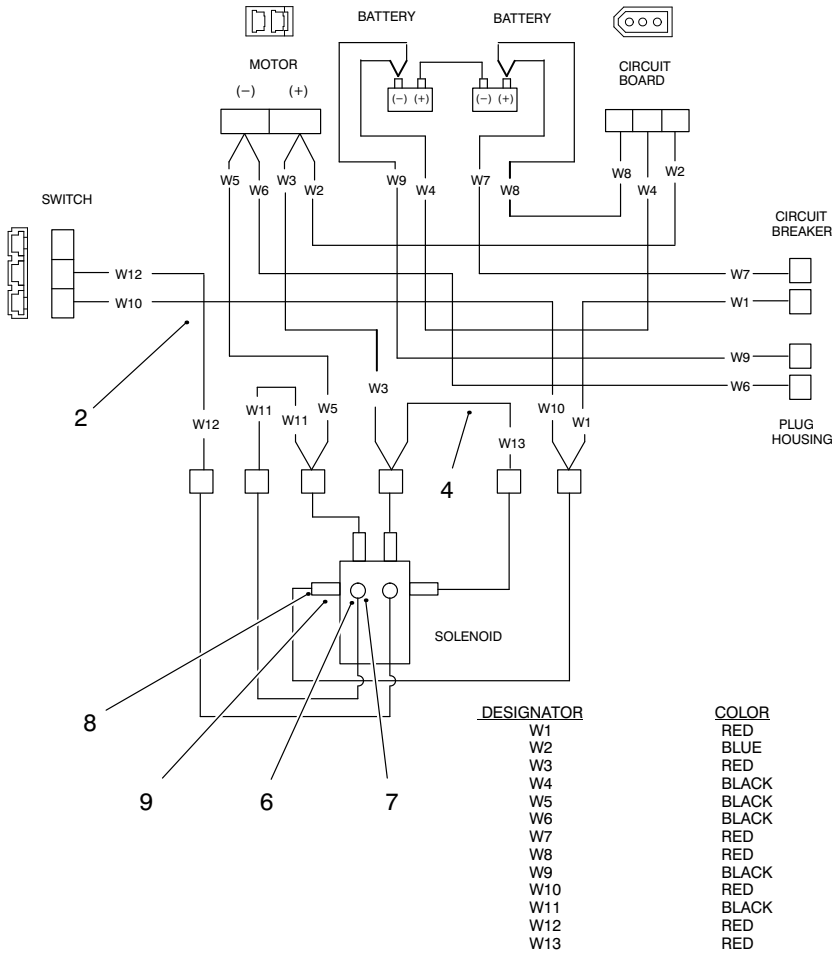


Sheet No.: 5

Handle and Controls Assembly

Ref. No.	Part No.	Qty.	Description
1	93-3986	2	Screw-PPH
2	92-2260	2	Screw-Handle
3	93-3971	1	Handle-Upper
4	93-3978	1	Cable-Control
5	3296-8	1	Nut-Lock
6	93-3972	1	Handle-Lower
7	19-4050	2	Knob
8	92-2269	1	Screw-Handle
9	93-3965	1	Cover-Bail
10	93-3977	1	Bail
11	93-3969	1	Housing-Bail
12	94-3851	1	Spring-Slide
13	94-1154	1	Spring-Bail
14	93-3967	1	Cam
15	94-1191	1	Nut-Push
16	93-3968	1	Slide
17	94-3868	1	Washer-Flat
18	94-4496	1	Screw
19	94-7407	1	Support-Cable
20	3256-2	1	Washer-Flat
21	94-7409	1	Clip-Cable

Ref. No.	Part No.	Qty.	Description



Sheet No.: 6

Electrical Wire Diagram and Side Discharge Chute

Ref. No.	Part No.	Qty.	Description
*1	95-5158	1	Decal-Positive
2	95-5048	1	Harness-Wire (Incl. W1-W12)
3	93-3963	1	Chute-Side Discharge
4	95-3254	1	Harness-Wire (Incl. W13)
*5	95-5159	1	Decal-Negative
6	3219-27	2	Nut-Hex
7	3253-25	2	Washer-Lock
8	3220-2	4	Nut-Jam
9	3253-4	4	Washer-Lock

Ref. No.	Part No.	Qty.	Description

* Not illustrated

Toro Part Number Index

Part No.	Page No.	Ref. No.	Qty.	Description
610358	1	4	4	Nut-Lock
19-4050	4	7	2	Knob
40-1940	1	6	4	Washer
92-1008	1	2	2	Knob-Height Adjust
92-1057	1	15	4	Bolt-Shoulder
92-2260	4	2	2	Screw-Handle
92-2269	4	8	1	Screw-Handle
92-8615	3	10	1	Applique-Shroud
93-3333	1	10	1	Transformer-24 Volt
93-3340	2	3	1	Fan
93-3341	2	4	1	Bushing
93-3342	2	2	1	Washer
93-3343	1	11	2	Housing-Transformer
93-3344	3	4	1	Housing-Plug
93-3345	3	14	1	Clamp-Switch
93-3346	3	17	1	Cover-Lever
93-3950	3	1	1	Key
93-3952	1	5	2	Axle
93-3953	2	5	1	Blade
93-3963	5	3	1	Chute-Side Discharge
93-3965	4	9	1	Cover-Bail
93-3967	4	14	1	Cam
93-3968	4	16	1	Slide
93-3969	4	11	1	Housing-Bail
93-3970	3	15	1	Switch-Toggle
93-3971	4	3	1	Handle-Upper
93-3972	4	6	1	Handle-Lower
93-3975	3	11	1	Bracket-Cable
93-3977	4	10	1	Bail
93-3978	4	4	1	Cable-Control
93-3981	3	3	1	ASM-Plug
93-3982	3	5	1	Circuit Breaker
93-3985	1	9	11	Screw-PPH
93-3986	2	13	1	Screw-PPH
93-3986	3	22	4	Screw-PPH
93-3986	4	1	2	Screw-PPH
93-3987	2	10	1	Bolt-Blade
93-3990	3	20	1	Pin-Hinge
93-3999	3	16	1	Spring-Switch
94-1154	4	13	1	Spring-Bail
94-1163	3	18	1	Mulch Plug-Inside
94-1164	3	21	1	Mulch Plug-Outside
94-1191	4	15	1	Nut-Push
94-1194	3	12	3	Clamp-Cable
94-1197	2	12	2	Tape-Foam
94-1199	1	7	2	ASM-Wheel
94-3850	1	14	2	ASM-Wheel
94-3851	4	12	1	Spring-Slide
94-3865	3	19	1	Spring-Torsion
94-3868	4	17	1	Washer-Flat
94-3870	1	3	1	ASM-Front HOC Lever
94-3871	1	13	1	ASM-Rear HOC Lever
94-3881	3	2	1	ASM-Panel
94-3896	1	1	1	ASM-Deck
94-3897	1	8	1	ASM-Liner
94-4496	2	14	2	Screw
94-4496	3	6	12	Screw
94-4496	4	18	1	Screw
94-6919	2	1	1	ASM-Motor 24 Volt
94-6921	3	7	1	ASM-Circuit Board
94-6961	3	13	5	Screw
94-7407	4	19	1	Support-Cable

*Not Illustrated

Toro Part Number Index (cont.)

Part No.	Page No.	Ref. No.	Qty.	Description
94-7409	4	21	1	Clip-Cable
94-7417	1	16	1	Trailing Shield
95-3027	2	18	1	Bracket-Solenoid
95-3254	5	4	1	Harness-Wire
95-3256	2	20	1	Solenoid-24 Volt
95-3284	3	9	1	Decal-Cover
95-5027	2	6	1	ASM-Battery Strap
95-5037	1	12	1	Plate-HOC
95-5048	5	2	1	Harness-Wire
95-5158	5	1	1	Decal-Positive
95-5159	5	5	1	Decal-Negative
95-5164	2	11	1	ASM-Battery
95-5172	3	8	1	ASM-Cover
95-5180	2	21	1	Spacer-Foam
3219-27	5	9	2	Nut-Hex
3220-2	5	7	4	Nut-Hex
3234-26	2	19	2	Screw-HHF
3253-4	5	8	4	Washer-Lock
3253-25	5	10	2	Washer-Lock
3256-2	4	20	1	Washer-Flat
3256-49	2	15	2	Washer-Flat
3290-340	2	9	1	Washer-Spring
3296-8	4	5	1	Nut-Lock
3296-56	2	17	4	Nut-Lock
32144-8	2	7	1	Screw-PPH
32144-44	2	8	2	Screw-HWHTF
32144-110	2	16	2	Screw-HWHTF

