



Basket Update Kit

Greensmaster® Flex™ 2100/eFlex® 2100 Mower

Model No. 121-4720

Installation Instructions

Loose Parts

Use the chart below to verify that all parts have been shipped.

Description	Qty.	Use
No parts required	—	Removing the old basket strip.
Basket strip	1	Installing the kit.
Pop rivet	8	
Basket bumper	2	
Bolt	2	
Flange nut	2	
Right basket bracket	1	
Left basket bracket	1	

This kit updates a Flex 2100/eFlex 2100 basket for use with a grooming reel attachment.

Removing the Old Basket Strip

1. Cut the old basket strip off of the basket 2.85 cm (1-1/8 inches) from the front edge of the bracket (Figure 1).

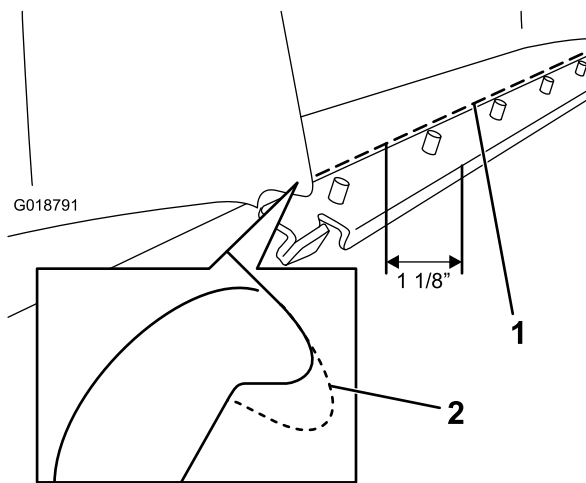


Figure 1

1. 1 1/8 inch cutting line
2. Squared off lip

2. Square off the front lip of the basket near the previously removed basket bracket (Figure 1).

Installing the Kit

1. Clamp the new basket strip to the front of the basket lining up the notch in the strip with the raised bump on the basket (Figure 2).
2. Drill 8, 4 mm (5/32 inch) holes for the pop rivets using the basket strip as a guide (Figure 2).
3. Connect the basket strip to the basket using 8 pop rivets (Figure 2).
4. Drill 2, 6.75 mm (17/64 inch) holes using the sides of the basket strip as a guide (Figure 2).
5. Attach the basket bumpers to the basket strip using 2 bolts and flange nuts (Figure 2).
6. Remove the 2 flange nuts securing the bracket bar to the basket (Figure 2).
7. Slide the basket brackets onto the bolts securing the bracket bar and install the previously removed flange nuts (Figure 2).



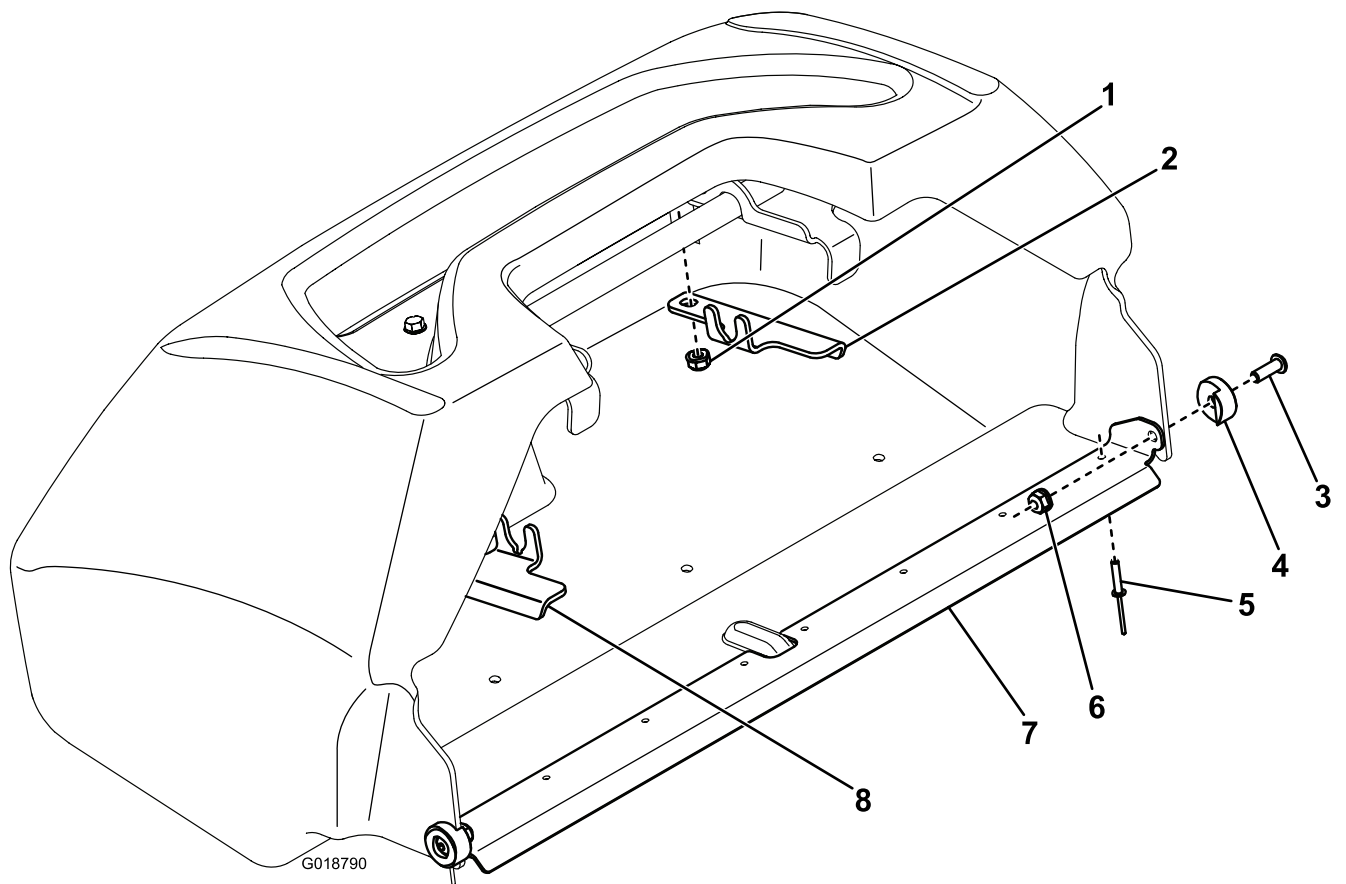


Figure 2

- | | |
|------------------------------|-----------------------------|
| 1. Flange nut | 5. Pop rivet |
| 2. Right hand basket bracket | 6. Flange nut |
| 3. Bolt | 7. Basket strip |
| 4. Basket bumper | 8. Left hand basket bracket |